

*RHINOCEROS, PL. I.  
Squelette du Rhinocéros unicolore  
des Indes.*

*Terminé par H. Broquet (1803).*

*Gravé d'après nature.*

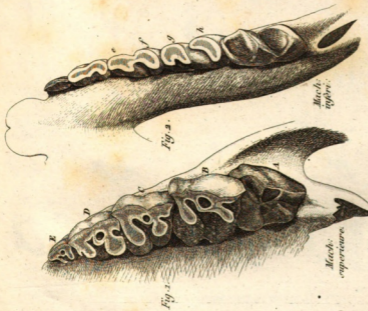


Fig. 2.

Fig. 3.

Mach. super.

Mach. infer.

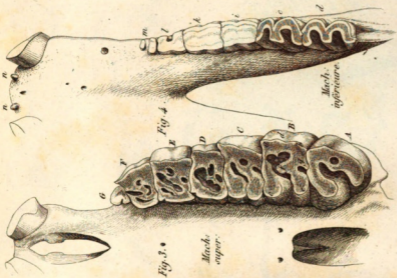


Fig. 4.

Fig. 5.

Mach. super.

Mach. infer.

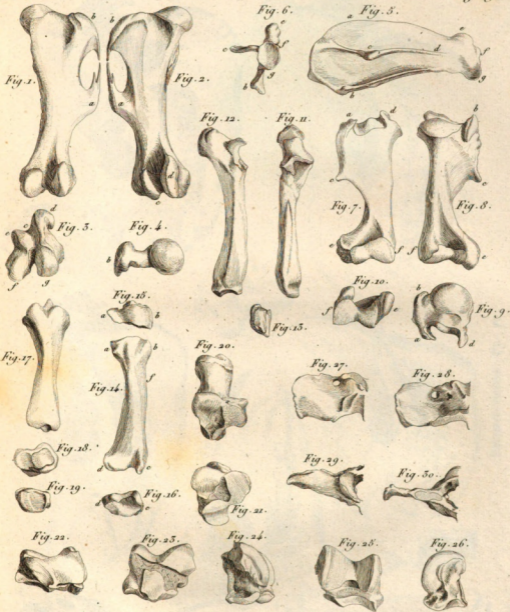
Rhinoceros bicorne.

RHINOCEROS. PL. II.

Rhinoceros unicornis.

Cancer del estomago, &c.

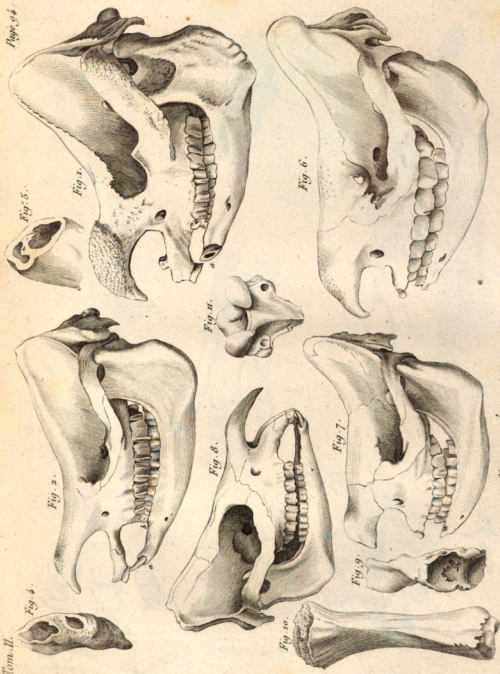
Tronco por II. Denticionis.



RHINOCEROS. PL. III.

Laurent de Lamoignon del. et sculp.

RHINOCEROS . PL. IV.



Leveillé del. Ad.

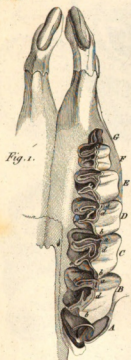


Fig. 1.



Fig. 2.

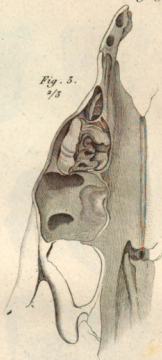


Fig. 3.  
2/3



Fig. 4.  
1/6

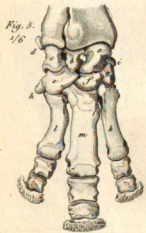


Fig. 5.  
1/6

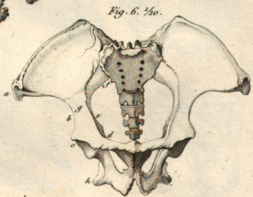
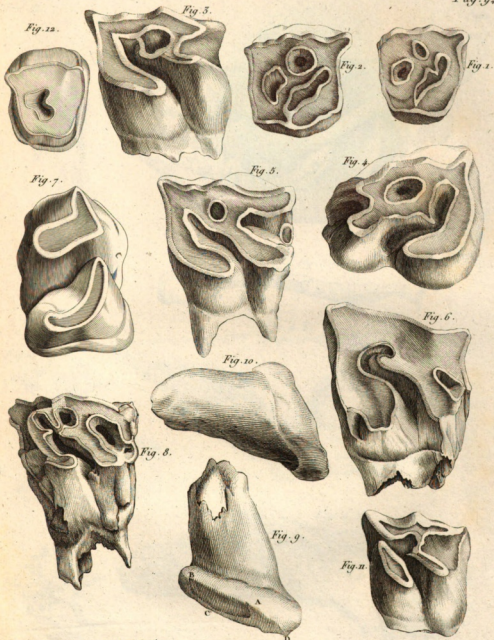


Fig. 6. 1/20.

RHINOCEROS, PL. V.

Levellard del.



Leveillard del.

RHINOCEROS . PL. VI.

Guat. sc.

Fig. 1. ♀.

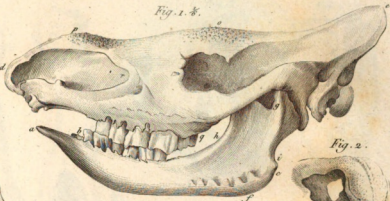


Fig. 6. ♀.



Fig. 2.



Fig. 3. ♀.



Fig. 4. ♀.



Fig. 8.

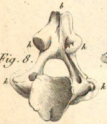


Fig. 7. ♀.



Fig. 5. ♀.

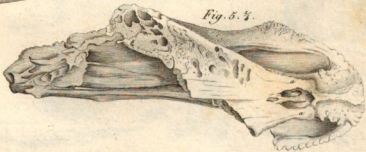


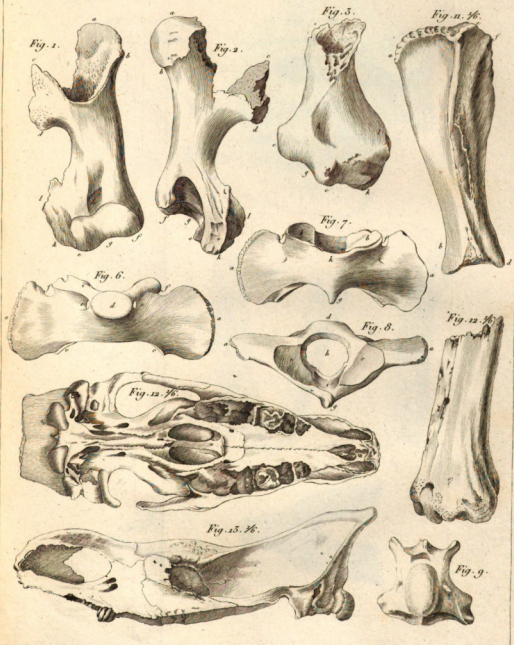
Fig. 9.



RHINOCEROS, PL. VII.

Lordward side.

Count down.



Lawillard del.

RHINOCÉROS, PL. VIII.

Darwin sculp.



Fig. 7.  $\frac{1}{6}$

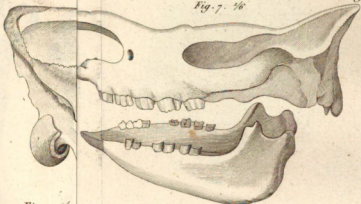


Fig. 2.  $\frac{1}{6}$



Fig. 8.  $\frac{1}{4}$

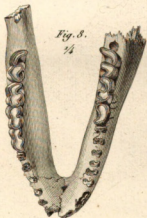
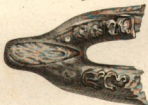


Fig. 9.



Fig. 10.



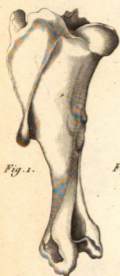


Fig. 1.

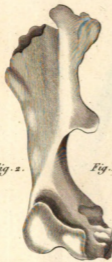


Fig. 2.



Fig. 3.

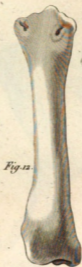


Fig. 4.



Fig. 5.



Fig. 6.



Fig. 7.



Fig. 8.



Fig. 9.



Fig. 10.



Fig. 11.



Fig. 12.



Fig. 13.



Fig. 14.



Fig. 15.



Fig. 16.



Fig. 17.



Fig. 18.

RHINOCEROS. PL. X. 36.

Fig. 1.



Fig. 2.



Fig. 3.



Fig. 4.



Fig. 5.

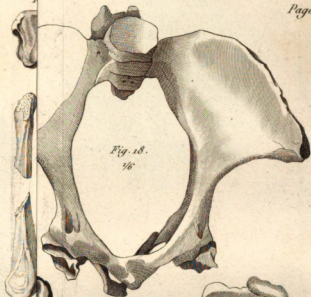


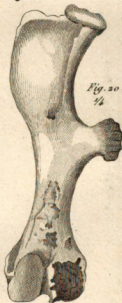
Fig. 18.  
3/6



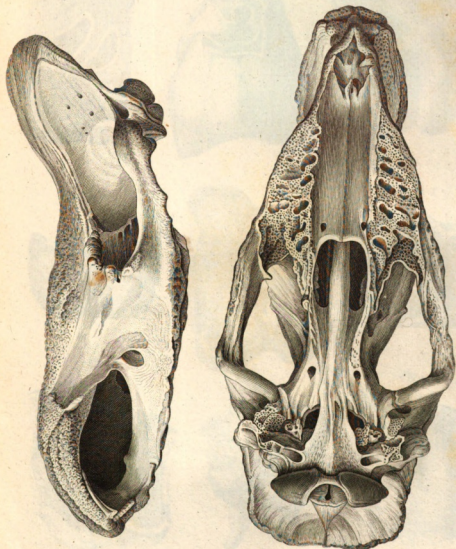
Fig. 21.



Fig. 20.  
1/4



Landward side!



RHINOCÉROS. PL. XII.

*Boat del.*

Fig. 1.



Fig. 2.



Fig. 4.



Fig. 5.



Fig. 6.



Fig. 7.



Fig. 8.



Fig. 8.



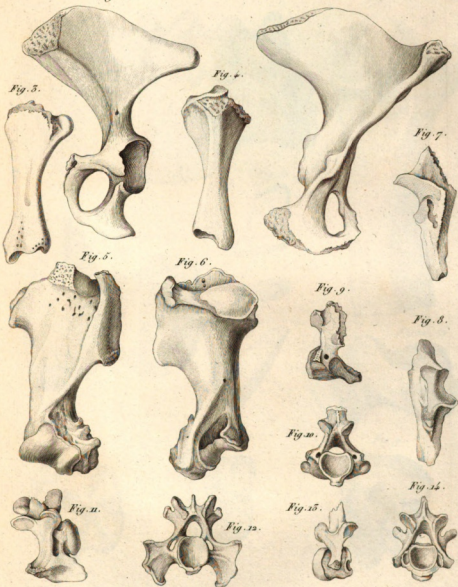
Fig. 9.



Leveillard del.

RHINOCEROS PL. XIII.

Costant sculp.



Mey Morland, del.

RHINOCEROS PL. XIV. 3/6.

Condant sculp.

Fig. 1.

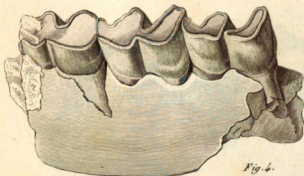


Fig. 2. 1/2



Fig. 4.



Fig. 3. 1/2

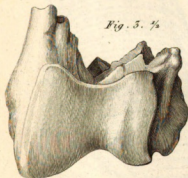


Fig. 5.



Fig. 6.



Fig. 10. 1/2



Fig. 7.



Fig. 8.



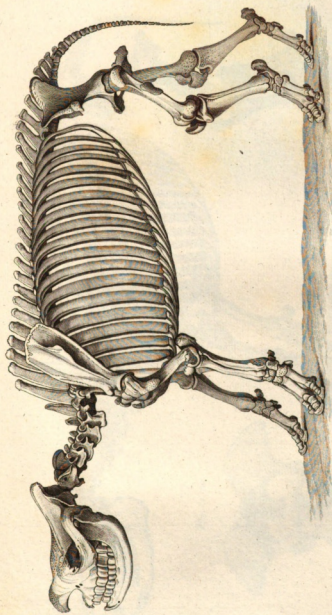
Fig. 9.



Leveillard del.

RHINOCEROS. PL. XV.

Geatart sculp.



RHINOCEROS PL. XVII. Squellette du Rhinocéros bicorne du Cap.

Gravé par

Blondel.



Fig. 1 1/2.

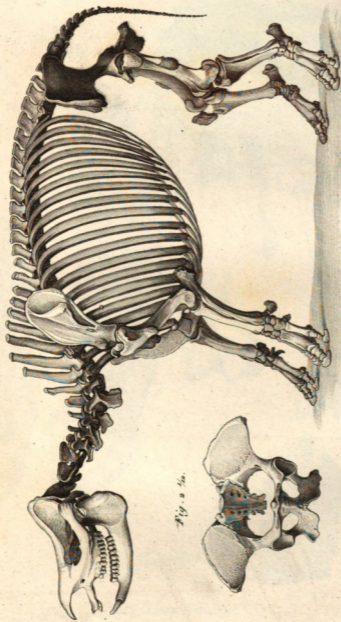
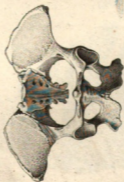


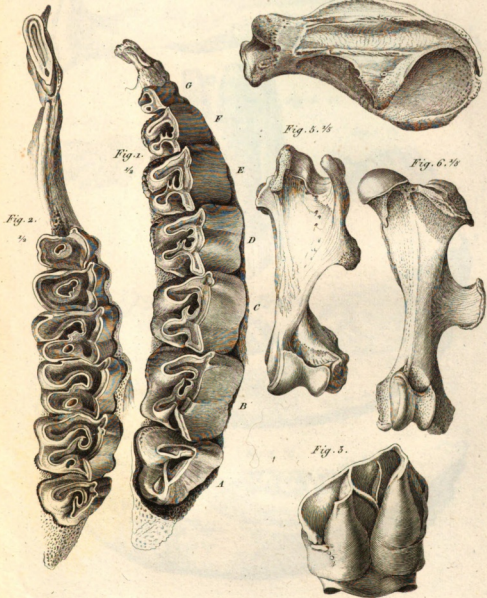
Fig. 2 1/2.



RHINOCEROS. PL. XVII. Spedale de Rhinoceros univoce de Java.

Bar. del.

Cramer sculp.



RHINOCEROS. PL. XVIII.

Blot. del.

Grav. sculp.



Fig. 6.  $\frac{1}{2}$



Fig. 5.  $\frac{1}{2}$



Fig. 7.  $\frac{1}{2}$



Fig. 2.  $\frac{1}{2}$



Fig. 3.  $\frac{1}{2}$



ELASMOTHERIUM.