

**ZOO BASEL**

**GREATER ONE-HORNED RHINOCEROS  
(RHINOCEROS UNICORNIS)**

**INTERNATIONAL STUDBOOK 2020**



# INTERNATIONAL STUDBOOK for the year 2020

## Greater one-horned Rhinoceros

### Rhinoceros unicornis, Linné, 1758

Updated, 31 December 2020

International Studbook Keeper                      Beatrice Steck                      Basel Zoo

published by Zoo Basel, Switzerland, 2021 (first edition 1973)

BASEL ZOO

Binningerstrasse 40, PO Box, 4011 Basel, Switzerland

Phone ++41 61 295 35 35, [www.zoobasel.ch](http://www.zoobasel.ch)

Imprint

Beatrice Steck    Basel Zoo

International Studbook Keeper                      Beatrice [steck@zoobasel.ch](mailto:steck@zoobasel.ch)

Dr. Olivier Pagan    Basel Zoo

EEP Species Coordinator                              Olivier [pagan@zoobasel.ch](mailto:pagan@zoobasel.ch)

Beatrice Steck    Basel Zoo

EEP Coordinator's Assistant                          Beatrice.steck@zoobasel.ch

Torben Weber, Cover                                      Basel, Switzerland



World Association of Zoos  
and Aquariums | **WAZA**  
*United for Conservation*

## Citation

Steck, B. L. 2021. International Studbook for the Greater one-horned rhinoceros 2020. Zoo Basel, Switzerland.

## Contents

1	Acknowledgments.....	4
2	Biological Data.....	5
3	Status and Conservation.....	7
	GREATER ONE-HORNED RHINO CONSERVATION.....	8
	Indian Rhino Vision 2020.....	8
	Intelligence and Law Enforcement.....	10
	Direct Support to Rhino Reserves.....	12
	Habitat Management.....	13
	Conclusion.....	13
4	Demographic and Genetic Analysis.....	16
	4.1. Demographic analysis.....	16
	4.2 Genetic Analysis.....	18
5	Abbreviations.....	23
6	Events in 2020.....	24
	6.1 Births in 2020.....	24
	6.2 Deaths in 2020.....	25
	6.3 Transfers in 2020.....	26
7	Appendix I – Historical Studbook Population.....	27
8	Appendix II – Current Studbook Population.....	53
9	Location Glossary 2020.....	71

# 1 Acknowledgments

On 31st of December 2020, 223 (114/109) animals were living in 81 locations worldwide.

Studbook data was taken from ZIMS. Still, not all zoos in all regions use ZIMS and the information provided by certain zoos is rather poor. The information entered into ZIMS by various locations does not match the information taken from SPARKS. Animals that appear in SPARKS but not in ZIMS were not removed in the hope that further information can be obtained about them in future, especially from zoos in India, so that these mismatches can eventually be sorted out. Nevertheless, the input received from various people over the years is much appreciated and I hope that data quality will improve with each new studbook.

Special thanks go to Dr. Naresh Subedi (Conservation Manager, National Trust for Nature Conservation, Nepal, and to the International Rhino Foundation IRF for providing GOH rhino numbers in the wild and conservation updates from Nepal and India.

Beatrice Steck

International Studbook Keeper for the Greater one-horned rhinoceros

## 2 Biological Data

<b>Name</b>	Greater one-horned rhinoceros or Indian rhinoceros
<b>Present distribution</b>	India (Assam, West Bengal, Uttar Pradesh), Nepal
<b>Population status</b>	Vulnerable, CITES Appendix I
<b>Habitat</b>	Riverine grasslands of the Terai and Brahmaputra basins

### Food

Greater one-horned rhinos feed predominantly on grass, but are known to consume a wide range of other plants, such as leaves, branches, shrubs, cultivated crops and fruits. In addition, the rhinos frequently visit areas rich in minerals.

### Behaviour

#### Social groupings

Adult males and adult females without calves live mostly solitarily. Males defend loosely defined territories, which can overlap with territories of other males. The strongest male usually has the best food area. As territories depend strongly on the availability of food, they change during the different seasons.

A female and a calf stay together at least until the calf reaches the age of 3 - 4 years. Female calves are tolerated for a longer period, whereas young bulls leave the mother and form loose 'boy groups'. Females wander loosely between the territories of the bulls and mate usually with the strongest one.

#### Short-term aggregations

The most common aggregations occur in mud wallows. As rhinos graze in the morning and afternoon, they use the hottest time of the day to submerge in wallows or water. At those places, rhinos seem to be more tolerant against each other. After wallowing, they separate again. During the monsoon, the water level rises to extreme levels. Although adults as well as young animals are good swimmers, it often occurs that calves are separated from their mothers.

## **Reproduction**

Birth weight in captivity:	64.5kg (44 - 91kg)
Gestation length in captivity:	479.1 days (425-496 days)
Oestrus cycle in captivity:	30-45 days
Interbirth interval in the wild:	34 - 50 months
Interbirth interval in captivity:	32.6 months
Sexual maturity:	Females: 4 – 6 years Males: 7 - 10 years
First reproduction in captivity:	Male of known age: 6 years, 3 months, 24 days Female: 4 years and 7 days

Mating takes place throughout the year (wild) and there is no specific calving season.

A calf drinks on average 20 - 30 litres of milk per day. The milk is very rich in lactose and low in fat. On average, a calf gains 1 – 2 kg weight per day. Calves suckle for a long period (up to 20 months) but start feeding on roughage at an early age (3 months).

## **Sizes and weights**

Body weight in the wild:	Up to 2000 kg
Body weight in captivity:	Males: 1800 – 2300 kg Females: 1500 – 2100 kg
Shoulder height in the wild:	150 – 180 cm, with males being taller
Shoulder height in captivity:	Males up to 195 cm, females up to 172 cm
Head-body-length:	Between 3 -4 m (with captive animals usually being taller and larger than wild animals).
Horn length in captivity:	Typically between 20 – 60 cm

## **Longevity**

Animals in captivity live on average up to 35 - 40 years, maximum recorded age is 45 years.

### **3 Status and Conservation**

At the end of 2020, the numbers of wild Greater one-horned rhinos are estimated to be approximately 2988 in India and 752 in Nepal.

Despite the fact that wild populations are rising, poaching is still an ongoing threat.

**Situation in India**

**Conservation work / information**



### **International Rhino Foundation**

**Greater One-Horned Rhino Report 2020 (shortened version)**



Greater one-horned rhino, Manas National Park. Copyright Woodland Park Zoo.

## **GREATER ONE-HORNED RHINO CONSERVATION**

The goal of IRF's greater one-horned conservation program is to reduce rhino poaching and increase the population of Vulnerable greater one-horned rhinos in Assam, India. Assam province is home to more than 85% of the world's population of greater one-horned rhinos. Protecting this critical rhino population also safeguards numerous other threatened species and will create opportunities for local communities to increase their income through jobs in protected area management, protection, and ecotourism. In Assam, IRF funds greater one-horned rhino translocations through the Indian Rhino Vision 2020 (IRV2020) program, operates an Intelligence and Law Enforcement program to reduce poaching and illegal wildlife trade, and provides security support for national parks with rhino populations. We had originally planned to broaden our programs in India and expand our work into Nepal in 2020, but the pandemic and related shutdowns have delayed our efforts.

### **Indian Rhino Vision 2020**

Beginning in 2005, IRF and our Indian Rhino Vision 2020 partners worked together to establish a new rhino population in Assam's Manas National Park. A total of 21 animals have been born in the park since 2012, and in 2020, two more rhinos were translocated from Kaziranga NP to Manas, bringing the population to 44 animals and growing.

In 2020, IRF implemented the final year of the IRV2020 program. The International Rhino Foundation, in partnership with the Assam Forest Department, Bodoland Territorial Council, WWF-India and other NGOs, implements IRV2020, which aims to expand the number and range of the greater one-horned rhino in Assam through translocations from Kaziranga and Pabitora to other appropriate protected areas. The IRV 2020 goal is to "increase the total rhino population in Assam from present numbers to 3,000 by 2020, and to ensure that these rhinos are distributed over at least seven Protected Areas to provide long-term viability of an Assam metapopulation." In 2020, we planned to translocate 4 rhinos from Kaziranga National Park to Manas National Park, to complete the original project goal of moving 20 rhinos into Manas.

At the end of February, two sub-adult female greater one-horned rhinos were transported from Kaziranga National Park and released in Manas National Park in Assam, India under the supervision of veterinary and security personnel. The two females increased the population of greater one-horned rhinos in Manas with 44 rhinos now roaming the park. This was the 7<sup>th</sup> translocation under the guidance of the Indian Rhino Vision 2020 program (IRV2020), which established an initial population of 18 in 2009.





**Successful translocation of a greater one-horned rhino in February 2020.**

In addition to translocating animals to ensure that these rhinos are distributed over at least seven Protected Areas, considerable investments have been made in wildlife crime training, prevention, and anti-poaching. These efforts, in conjunction with the collaborative work of IRV2020 partners, have resulted in a rhino population that is stable and growing.

In early March 2020, the government of India declared a lock-down for the entire country. Severe restrictions continued for several months, which made it impossible to complete the final rhino translocation under the IRV2020 plan (in which two more rhinos were scheduled to be moved to Manas). This translocation has been postponed until March 2021. While restrictions continue, IRV2020 partners are meeting virtually throughout 2021 to develop new goals for the next five years of rhino conservation in Assam.

Despite the challenging circumstances of the past year, we continue to experience conservation wins with the greater one-horned rhino conservation program. Highlights from 2020 include:

- Completion of IRV2020, which resulted in a successful new population of rhinos in Manas National Park through translocations and the population of GOH surpassing 3,000.
- Two sub-adult female greater one-horned rhinos were transported from Kazaringa National Park and released in Manas National Park in Assam, India.

- 3 generations of greater one-horned rhinos now exist in Manas National Park, thanks to the success of IRV2020.
- The population of greater one-horned rhinos has grown drastically, from fewer than 100 individuals to more than 3,600 today.
- Poaching of greater one-horned rhinos continues to decrease annually.

The IRV2020 partners will meet virtually throughout 2021 to develop the next five-year greater one-horned rhino strategy. We will review each success and failure to identify a new, comprehensive plan for the conservation of greater one-horned rhinos. Further, we plan to

complete the final two translocations of greater one-horned rhinos from Kaziranga National Park to Manas National Park in March 2021. The work of



**Greater one-horned rhino thrives in Kaziranga National Park.**

IRV2020 has often been difficult and not all of the original goals have been met. There have been several starts and stops along the way. What has been most important is that there was and remains a long term commitment dedicated to not just the survival of this species, but that greater one-horned rhinos will thrive for many generations to come.

### **Intelligence and Law Enforcement**

IRF's Intelligence and Law Enforcement Specialist, Rahul Dutta, holds his wildlife crime investigation training during the winter months, when poaching events are most likely to occur (and because it is too difficult logistically to conduct trainings during the monsoon season).

During the winter of 2019/2020, we conducted four wildlife crime investigation trainings for 40 frontline staff in Kaziranga, Pabitora and Orang, the three protected areas in India with the largest

population of rhinos. Easing of Covid-19 restrictions allowed for the fifth training, a three-day wildlife crime prevention workshop, to occur in Manas National Park in early September.



**IRF staff travel with Kaziranga National Park senior officials to discuss strengthening rhino monitoring efforts.**

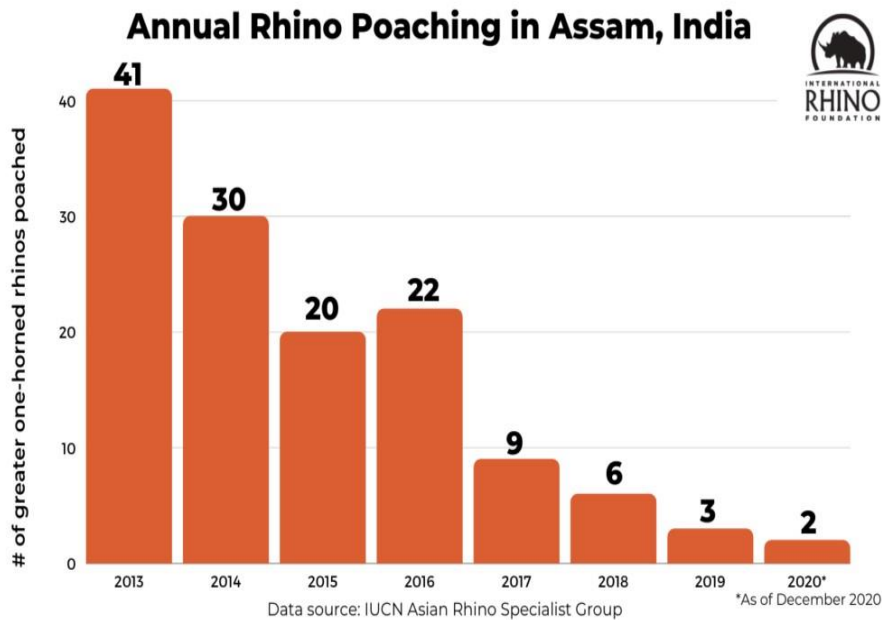
During the lockdown, Dutta is revising and updating the second edition of his handbook on wildlife crime, which will be published and distributed to at least 500 officers in 2021. The Field Director of Kaziranga National Park also asked IRF staff to develop standard operating procedures for handling arrested suspects – Rahul has drafted the manual and provided it to India’s Chief Wildlife Warden for review.

With two assistants for the Intelligence Specialist now on board, work on the wildlife crime database is well underway. IRF’s team is routinely asked by park staff and police to help with ongoing wildlife crime cases.

Unfortunately, a rhino was killed in Kaziranga in early May (the first successful poaching incident this year, and the first after thirteen months of zero poaching). Rahul worked with enforcement agencies to apprehend the poachers. A second rhino was poached in early August in Kaziranga National Park. With virtually no movement of people on roads, the pandemic-induced lockdown made conditions perfect for poaching activity. Despite these losses, the number of poaching incidences continues to decrease annually.



Wildlife crime prevention workshop in Manas NP



#### Direct Support to Rhino Reserves

IRF purchased one 4WD vehicle and two motorbikes for security operations in Kaziranga National Park, home to the largest population of greater one-horned rhinos in the world. In addition to multiple waves of lockdowns, three flooding events occurred in Assam this year. IRF provided emergency support (including food and supplies for staff and browse for rhinos) to several protected areas.

## Habitat Management

IRF has begun funding grassland management in Manas National Park to improve the habitat for greater one-horned rhinos. Local community members are being hired to remove invasive plant species, which is most effective just before the flowering season in November.

## Conclusion

Greater one-horned rhinos represent a major conservation success story, but we cannot afford to become complacent. With rhino horn in high demand on the black market, well armed, highly-organized gangs of poachers continue to threaten India's rhinos. But, with your help, we can protect and secure this magnificent species.

In **India**, the International Rhino Foundation (IRF), is active in the management and conservation of wild greater one-horned rhinos. On their website, <https://rhinos.org/where-we-work/indian-rhino-vision-2020/> they report about their initiative to work in cooperation with various NGOs and government for the Indian Rhino Vision 2020 (IRV 2020

Aaranyak is an Indian NGO that is also very active in the protection of greater one-horned rhinos in Assam.

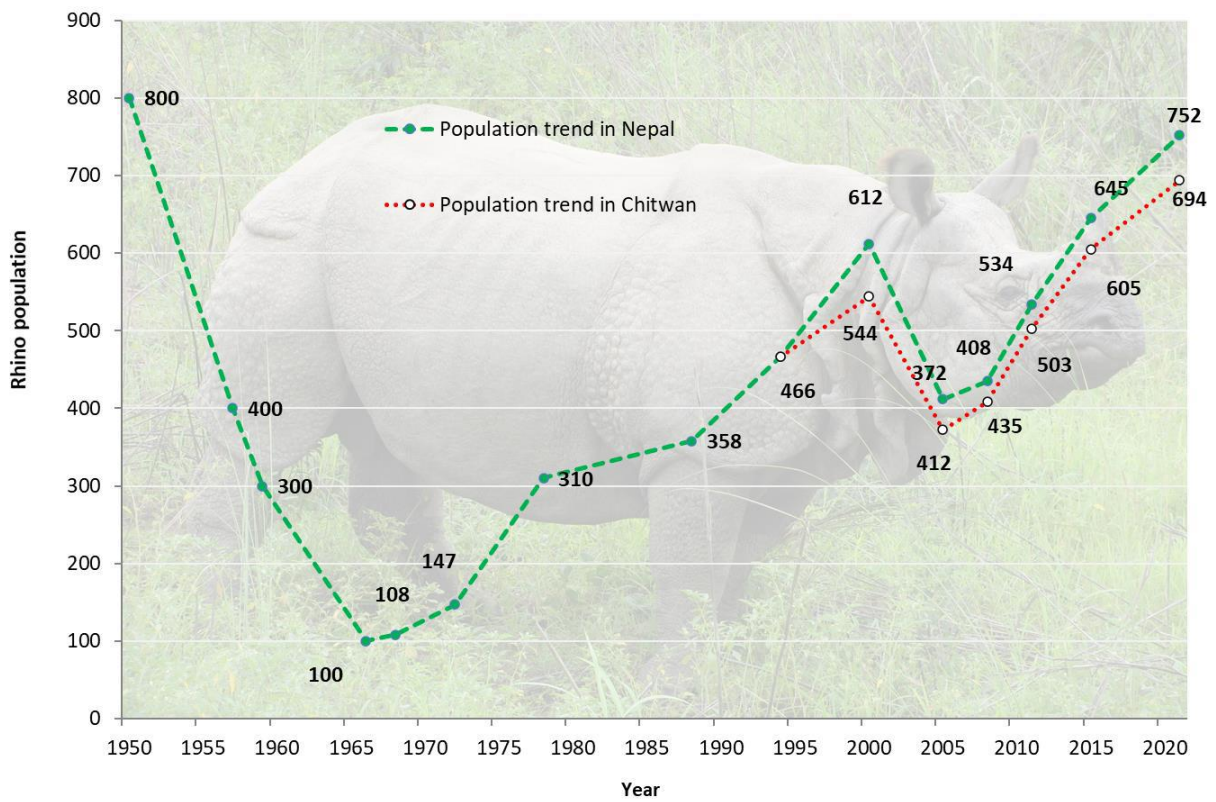
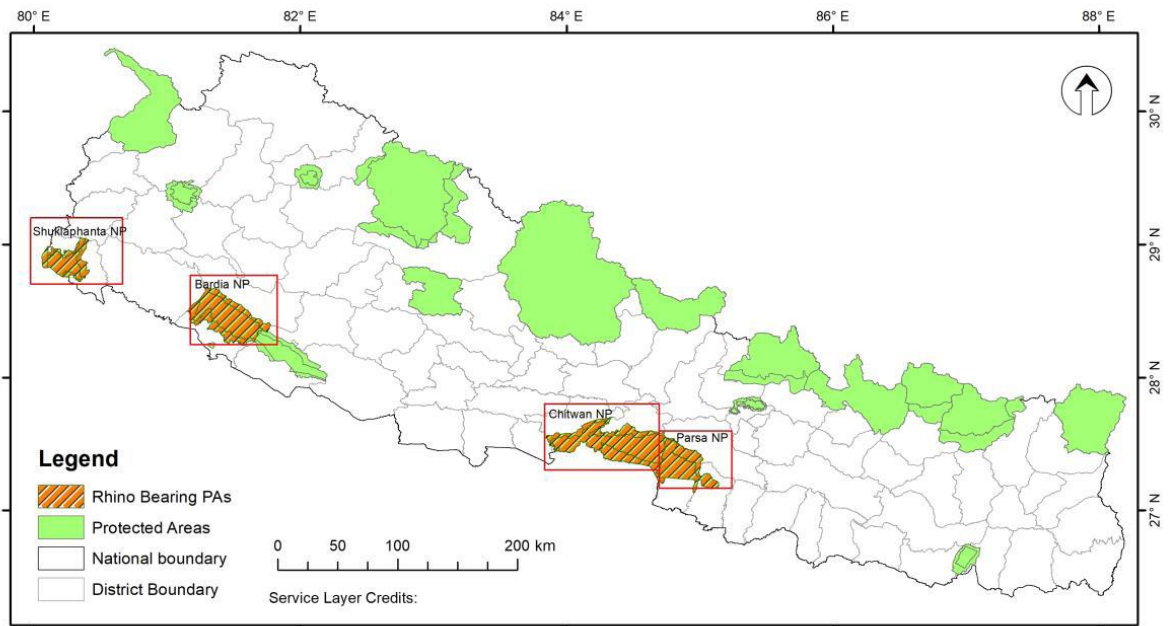
For further information please have a look at their webpage:

<https://www.aaranyak.org/showsubsubpage.asp?ssubid=38&subid=3&id=2>

## Situation in Nepal

### Rhino Conservation updates for Nepal July 2021

Nepal recently assessed the status of rhinos across the country and found 752 rhinos for the country. Rhinos are confined in Chitwan NP, Parsa NP, Bardia NP and Shuklaphanta NP in Nepal. The Bardia and Shuklaphanta NP rhino sub-populations were built through reintroductions.



**Table 1. Rhino Population in Nepal (2021). A total of 107 individuals added to the population after 2015.**

S N	Location	Male	Femal e	Unknow n	Adul t	Sub- adul t	Calf	Po p	Change after 2015
1	Parsa NP	1	1	1	2	0	1	3	-
2	Chitwan NP	128	174	392	474	95	125	694	+89
3	Bardia NP	14	19	5	31	1	6	38	+9
4	Shuklaphanta NP	3	4	10	13	0	4	17	+9
<b>Total</b>								<b>752</b>	<b>+107</b>

Rhino poaching was under control in Nepal. However, 4 rhinos have been poached in Chitwan NP during this covid period (2020/2021). Over a dozen poachers have also been arrested and prosecuted. Overall, Nepal is doing best on rhino conservation.

In **Nepal**, the National Trust for Nature Conservation works in various areas on the protection of greater one-horned rhinos. Their website <https://ntnc.org.np/index.php/thematic-area/greater-one-horned-rhino> provides detailed information about their projects.

For further information on rhino conservation projects, please visit:

[www.rhinos.org](http://www.rhinos.org)

[www.savetherhinos.org](http://www.savetherhinos.org)

[www.ntnc.org](http://www.ntnc.org)

[www.araanyak.org](http://www.araanyak.org)

## 4 Demographic and Genetic Analysis

### 4.1. Demographic analysis

As of 31 December 2020 the International Studbook listed 223 (114/109) Greater one-horned (GOH) in 81 locations.

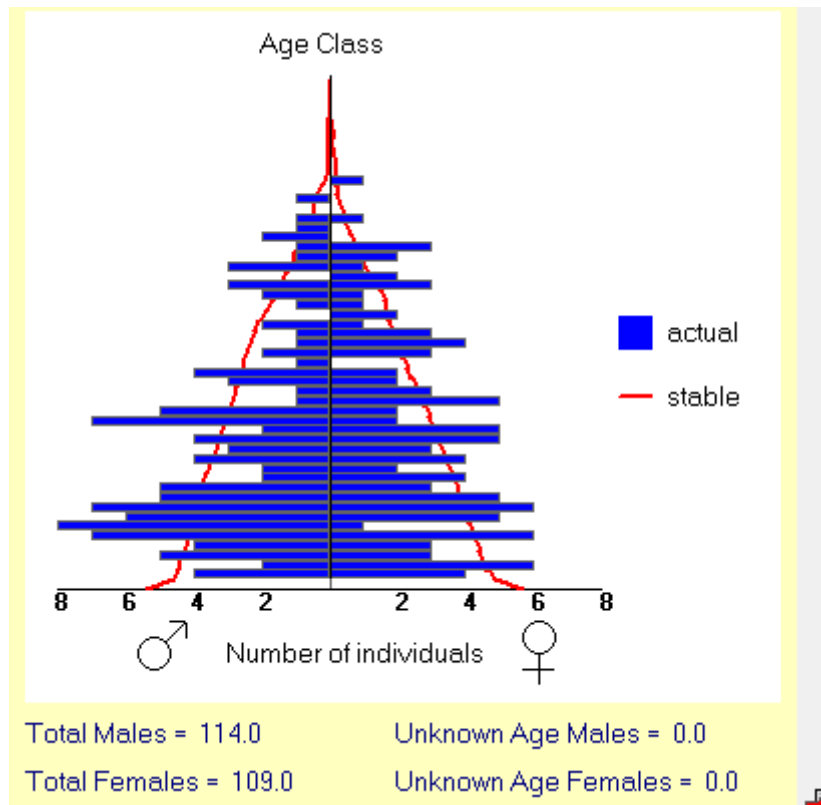


Figure 1 – Age structure of the captive population of the GOH rhinoceros

The age structure, illustrated in Figure 1, of the captive greater one-horned rhinoceros population is healthy. There are a few more males born than females.

30-day mortality in both sexes is 20.5% in both sexes.



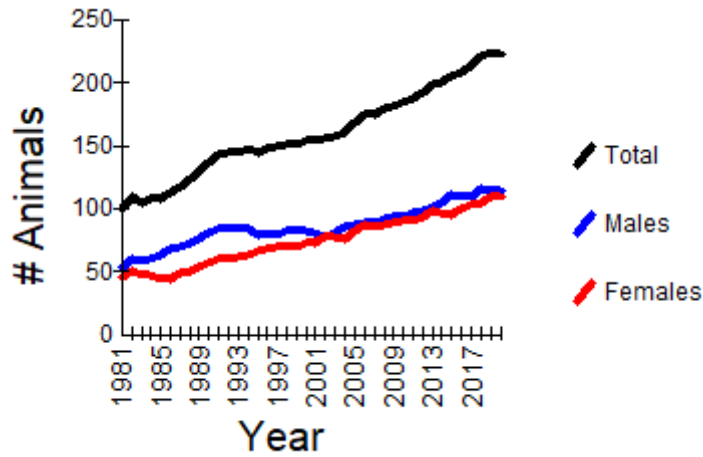


Figure 2 Census report of the Greater one-horned rhino population

The graph clearly shows a continuous rise of the population. The number of males and females is almost equal.

Life table summary (years)	males	females
r	0.050	0.0145
$\lambda$	1.050	1.0146
T	18.42 years	14.57 years
N	114	109

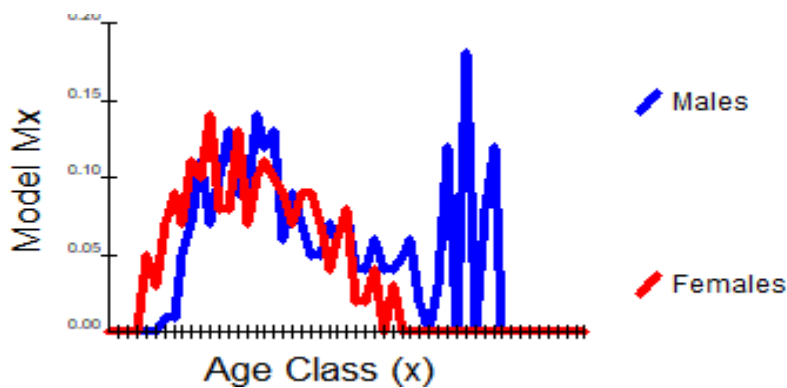


Figure 3 Age-specific rates of fecundity (Mx)

It illustrates the onset of fecundity (females can start at the age of 3-4 years, males at the age of 6-7) and the end of fecundity (females stop at the age of around 30, males almost 12 years later).

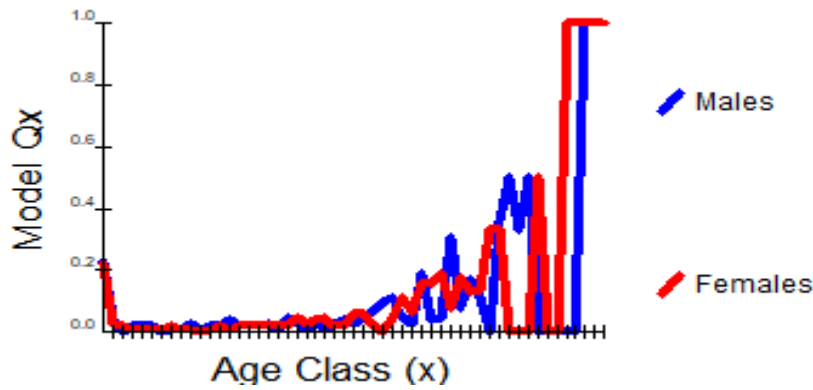
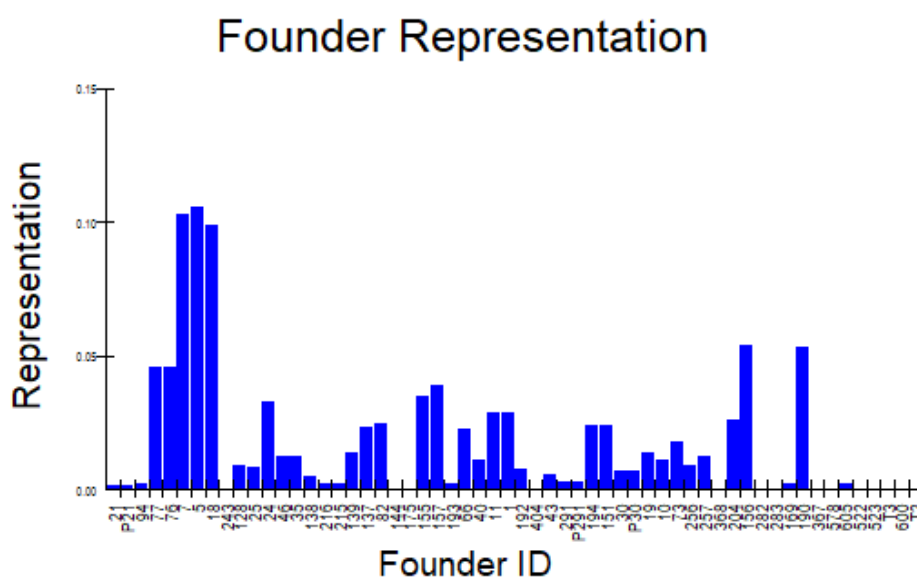


Figure 4 Mortality rate (Qx)

It can be seen that the mortality rate of the first 30 days is approximately 20% (in both sexes). In 2019, it was 19%. Research in this matter is necessary as it is assumed that mainly behavioural aspects and animal management play an important role.

## 4.2 Genetic Analysis

Figure 5 shows the founder representation in the captive population.



In order to maintain a healthy and viable captive population and to maintain the current gene diversity, the number of founders should be equally represented. However, this is not the case for the 58 founders in the captive population.

It is important to breed preferentially with underrepresented founders and their offspring. Such animals can be identified by their low mean kinships (see mean kinship table).

### Genetic summary

Founders	44
Potential (additional) Founders	14
Living Animals	223
Living Descendants	200
% Pedigree Known	99%
Gene Diversity	0.9583
Population Mean Kinship	0.0417
Gene Value	0.9598
Founder Genome Equivalents	12
Founder Genomes Surviving	27.95
Potential Gene Diversity	0.9885
Mean Inbreeding	0.036

Ordered list of mean kinships (mk) of all living captive individuals with known sex

#### Males

Stbno	MK	%known	age	location
175	0.000	100.0	33	TRIVANDRU
282	0.000	100.0	20	TOKYOTAMA
368	0.000	100.0	24	VIENNA
404	0.000	100.0	30	KATHMANDU
522	0.000	100.0	10	KATHMANDU
523	0.000	100.0	8	KATHMANDU
578	0.000	100.0	15	ASSAM
T2	0.000	100.0	4	QINGYUAN
603	0.003	100.0	35	CHANDIGAR
482	0.007	100.0	8	ASSAM

#### Females

Stbno	MK	%known	age	location
144	0.000	100.0	34	EUROPA
243	0.000	100.0	38	CHIANGMAI
283	0.000	100.0	20	KANAZAWA
367	0.000	100.0	18	VIENNA
600	0.000	100.0	5	ASSAM
T3	0.000	100.0	5	QINGYUAN
193	0.001	100.0	32	MUNICH
97	0.003	100.0	42	SINGAPORE
138	0.003	100.0	35	EVANSVILLE
192	0.004	100.0	31	ASSAM

## Zoo Basel

## International Studbook Greater One-horned or Indian Rhinoceros

129	0.010	100.0	37	LUCKNOW	256	0.004	100.0	25	WHIPNADE
125	0.012	100.0	36	OKLAHOMA	606	0.004	100.0	11	MYSORE
414	0.016	100.0	13	YULEE	257	0.006	100.0	25	WHIPNADE
166	0.017	100.0	31	NURNBERG	139	0.007	100.0	35	NY BRONX
480	0.017	100.0	8	KANPUR	352	0.007	100.0	19	ASSAM
540	0.017	100.0	6	KANPUR	137	0.012	100.0	35	OKLAHOMA
202	0.020	100.0	29	PATNA	252	0.016	100.0	24	DELHI
222	0.020	100.0	27	NY BRONX	346	0.019	100.0	17	SD-WAP
327	0.020	100.0	18	RUM CREEK	421	0.019	100.0	16	DELHI
422	0.020	100.0	15	KANPUR	264	0.020	100.0	22	WILDS
330	0.022	100.0	18	RUM CREEK	328	0.021	100.0	19	KANPUR
456	0.022	100.0	10	PATNA	464	0.022	100.0	9	SD-WAP
500	0.022	100.0	7	EVANSVILLE	372	0.023	100.0	15	SD-WAP
588	0.022	100.0	1	PATNA	494	0.023	100.0	8	YULEE
502	0.025	100.0	7	TOLEDO	515	0.023	100.0	6	YULEE
542	0.025	100.0	5	SEATTLE	396	0.027	100.0	14	DENVER
386	0.027	100.0	16	HYDERABAD	589	0.027	100.0	1	PATNA
536	0.027	100.0	4	PATNA	590	0.027	100.0	4	PATNA
365	0.031	100.0	17	PATNA	369	0.028	100.0	15	DUBBO
449	0.031	100.0	10	MYSORE	477	0.028	100.0	8	WILDS
497	0.031	100.0	7	FORTWORTH	573	0.028	100.0	2	WILDS
538	0.031	100.0	9	HYDERABAD	276	0.029	100.0	20	LOWRY
539	0.031	100.0	6	PATNA	375	0.029	100.0	15	OKLAHOMA
273	0.032	100.0	21	WILDS	584	0.029	100.0	1	OKLAHOMA
394	0.032	100.0	14	MONTGOMRY	238	0.030	100.0	25	YULEE
518	0.032	100.0	6	RUM CREEK	241	0.031	100.0	25	BUFFALO
571	0.032	100.0	2	BUFFALO	353	0.031	100.0	19	PATNA
451	0.033	100.0	10	RUM CREEK	441	0.031	100.0	12	PATNA
530	0.033	100.0	5	SEATTLE	479	0.031	100.0	8	MYSORE
562	0.033	100.0	3	HEMKER GF	514	0.031	100.0	5	SD-WAP
579	0.033	100.0	1	SD-WAP	572	0.031	100.0	2	SD-WAP
254	0.034	100.0	23	ROCKTON	159	0.032	100.0	33	PATNA
332	0.034	100.0	18	TORONTO	387	0.032	100.0	14	HYDERABAD
393	0.035	100.0	14	BEWDLEY	408	0.032	100.0	13	ROCKTON
513	0.035	100.0	5	STEVENSVI	460	0.032	100.0	9	METROZOO
545	0.035	100.0	5	COLUMBUS	485	0.032	100.0	8	NY BRONX
555	0.035	100.0	3	TORONTO	499	0.032	100.0	7	TANGAN WP

## Zoo Basel

## International Studbook Greater One-horned or Indian Rhinoceros

473	0.036	100.0	9	FOTA	223	0.033	100.0	27	NY BRONX
511	0.036	100.0	6	LA FLECHE	271	0.033	100.0	21	NY BRONX
263	0.037	100.0	22	DUBBO	471	0.033	100.0	9	YULEE
331	0.037	100.0	18	NAGOYA	501	0.033	100.0	7	RUM CREEK
450	0.037	100.0	10	SANFORD	561	0.033	100.0	3	SD-WAP
488	0.037	100.0	8	YULEE	570	0.033	100.0	2	METROZOO
512	0.038	100.0	6	AMERSFOOR	580	0.033	100.0	1	SD-WAP
567	0.038	100.0	3	BERLINZOO	342	0.034	100.0	17	TORONTO
510	0.039	100.0	6	AMERSFOOR	457	0.034	100.0	10	BATONROUG
351	0.041	100.0	21	SD-WAP	568	0.034	100.0	3	YULEE
370	0.041	100.0	15	SAFARIWIL	230	0.035	100.0	26	RUM CREEK
576	0.041	100.0	2	OMAHA	395	0.035	100.0	14	OMAHA
417	0.042	100.0	12	DENVER	376	0.036	100.0	15	CHESTER
583	0.042	100.0	1	LOWRY	435	0.036	100.0	11	PLANCKNDL
581	0.043	100.0	1	BEWDLEY	577	0.036	100.0	2	WHIPNADE
390	0.044	100.0	14	PATNA	531	0.037	100.0	5	YULEE
406	0.044	100.0	13	OMAHA	452	0.038	100.0	10	NYIREGYHA
483	0.044	100.0	8	PATNA	229	0.039	100.0	26	LISIEUX Z
437	0.045	100.0	11	TANGAN WP	161	0.040	100.0	32	SINGAPORE
106	0.046	100.0	40	CARSON	360	0.040	100.0	16	BEAUVAL
461	0.046	100.0	9	FOTA	409	0.040	100.0	13	PLZEN
412	0.047	100.0	13	BAYRAMOGL	455	0.043	100.0	10	BEWDLEY
335	0.048	100.0	17	WARSAW	288	0.046	100.0	19	RUM CREEK
524	0.048	100.0	6	EDINBURGH	489	0.046	100.0	8	TOUROPARC
534	0.048	100.0	4	EDINBURGH	556	0.046	100.0	3	MADRID Z
336	0.049	100.0	17	BEAUVAL	575	0.046	100.0	2	TERRA NAT
472	0.049	100.0	9	LA TESTE	362	0.047	100.0	16	PATNA
487	0.049	100.0	8	SINGAPORE	504	0.047	100.0	7	LISBON
503	0.049	100.0	7	LA FLECHE	269	0.048	100.0	21	GUERNO
505	0.049	100.0	7	FRESNO	284	0.048	100.0	19	TERRA NAT
343	0.050	100.0	17	TOUROPARC	374	0.048	100.0	15	WARSAW
517	0.050	100.0	6	SANDIEGOZ	582	0.048	100.0	1	PLANCKNDL
146	0.051	100.0	33	ROLLING H	201	0.049	100.0	29	LISBON
180	0.052	100.0	31	LOWRY	419	0.049	100.0	12	BEWDLEY
227	0.053	100.0	26	SAN FRAN	407	0.050	100.0	13	NYIREGYHA
357	0.053	100.0	16	VA SAFARI	462	0.052	100.0	9	RUM CREEK
373	0.053	100.0	15	BATONROUG	498	0.052	100.0	7	WROCLAW

## Zoo Basel

## International Studbook Greater One-horned or Indian Rhinoceros

262	0.054	100.0	22	QINGYUAN	516	0.052	100.0	7	RUM CREEK
559	0.054	100.0	3	SZEGED	548	0.052	100.0	4	BASEL
329	0.055	100.0	18	STEVENSVI	410	0.053	100.0	13	RUM CREEK
429	0.055	100.0	11	WROCLAW	245	0.054	100.0	24	LISBON
184	0.057	100.0	31	PLANCKNDL	325	0.054	100.0	18	ALBUSTAN
527	0.057	100.0	5	EUROPA	481	0.054	100.0	8	BAYRAMOGL
541	0.060	100.0	5	SINGAPORE	366	0.055	100.0	16	RUM CREEK
220	0.061	100.0	27	BASEL	529	0.055	100.0	5	GUERNO
240	0.061	100.0	25	TOKYOTAMA	244	0.057	100.0	24	YULEE
270	0.061	100.0	21	MADRID Z	574	0.057	100.0	2	BEAUVAL
411	0.061	100.0	13	BATUSECRE	182	0.058	100.0	31	EUROPA
563	0.061	100.0	3	SZEGED	226	0.058	100.0	26	BERLINZOO
188	0.062	100.0	30	LISBON	436	0.060	100.0	11	RUM CREEK
259	0.062	100.0	22	VALDOSTA	183	0.061	100.0	31	NAGOYA
466	0.062	100.0	9	LA TESTE	210	0.062	100.0	28	BASEL
486	0.062	100.0	8	LA TESTE	363	0.062	100.0	16	NURNBERG
532	0.062	100.0	4	BASEL	432	0.063	100.0	11	BEAUVAL
345	0.063	100.0	17	PLZEN	266	0.065	100.0	22	TOKYOTAMA
287	0.064	100.0	19	WHIPSHADE	470	0.065	100.0	9	FOTA
249	0.065	100.0	24	ALBUSTAN	280	0.069	100.0	20	TERRA NAT
333	0.069	100.0	17	NYIREGYHA	533	0.069	100.0	4	ROTTERDAM
265	0.070	100.0	22	LISIEUX Z	143	0.077	100.0	34	RUM CREEK
339	0.070	100.0	17	CHESTER	185	0.078	100.0	30	ROTTERDAM
445	0.071	100.0	12	NAGOYA	209	0.081	100.0	28	RUM CREEK
496	0.071	100.0	7	MITO CHO	553	0.500	0.0	5	MYSORE
117	0.074	100.0	38	KANAZAWA					
141	0.074	100.0	34	BEIJING					
152	0.075	100.0	33	MUNICH					
123	0.079	100.0	36	STUTTGART					
552	0.500	0.0	5	ASSAM					

## 5 Abbreviations

### Sex

F = female

M = male

U = unknown sex

### Parents

WILD = Animal has been captured from the wild

UNK = Captive born animal, but the identification of the parents (or sire / dam) is impossible

### Breeder Name

Assam = animal born in Assam, including the Kaziranga NP

Kaz = animal born in Kaziranga NP

Nepal = animal born in Nepal

India = animal born on the Indian subcontinent, including Nepal

The breeder name shows the name of the place where an animal was born or captured. The following letter or number indicates the sequences of birth or capture.

For example:

Kaz 5 = the 5th animal captured in the Kaziranga Reserve (as often animals are reported, that have been captured years ago, the number unfortunately does no longer correspond with a certain year / time)

Basel 28 = the 28th animal born in Basel Zoological Garden

### Status

B = Birth

P = Purchase

L = Loan

R = Return from loan

D = Donation

T = Trade

O = Owner

REL = Release

## 6 Events in 2020

### 6.1 Births in 2020

Stud#	Sex	Birth Date	Sire	Dam	Location	Date	LocalID	Event	Name
579	M	26 Mar 2020	351	464	SD-WAP	26 Mar 2020	4001668	Birth	Arjun
580	F	11 Apr 2020	351	372	SD-WAP	11 Apr 2020	4001824	Birth	Lulu
581	M	8 Sep 2020	393	419	BEWDLEY	8 Sep 2020	1895	Birth	Inesh
582	F	9 Jul 2020	184	435	PLANCKNDL	9 Jul 2020	184018	Birth	Vaiana
583	M	12 Sep 2020	180	276	LOWRY	12 Sep 2020	103530	Birth	Gronk
584	F	23 Oct 2020	190	375	OKLAHOMA	23 Oct 2020	774914	Birth	Yabi
588	M	16 Jun 2020	202	203	PATNA	16 Jun 2020	R-PAT32	Birth	
589	F	9 May 2020	202	353	PATNA	9 May 2020	R-PAT31	Birth	
TOTALS: 4.4.0 (8)									



## 6.2 Deaths in 2020

Stud#	Sex	Birth Date	Sire	Dam	Location	Date	LocalID	Event	Name
113	F	9 Aug 1982	73	55	PLANCKNDL	9 Aug 1982 13 Jun 2020	184004	Birth Death	Johanna
131	F	9 Apr 1986	83	66	NY BRONX	9 Apr 1986 17 Jul 2020	861069	Birth Death	Ellah
190	M	~ 1989	WILD	WILD	NEPAL FORTWORTH SD-WAP FORTWORTH	~ 1989 10 May 1990 18 May 2001 6 Nov 2008 29 Oct 2020	NONE 724 601279 724	Capture Transfer Loan to Transfer Death	Arun
239	M	31 Oct 1996	101	139	NZP-WASH WILDS MONTGOMRY	31 Oct 1996 21 May 1998 11 Oct 2008 21 Feb 2020	112946 980502 3715	Birth Loan to Transfer Death	Himal
341	F	2 Sep 2004	220	210	BASEL CHESTER MADRID Z	2 Sep 2004 22 Feb 2008 12 Mar 2010 14 Jun 2020	040044 C0837 RI5	Birth Loan to Loan to Death	Batschii
359	F	25 Oct 2005	239	230	WILDS NY BRONX CINCINNAT	25 Oct 2005 25 Oct 2005 16 Dec 2009 4 Apr 2020	105057 M05231 109072	Birth Ownership Loan to Death	Manjula
438	M	31 Aug 2010	287	257	WHIPSDADE GUERNO	31 Aug 2010 2 Mar 2015 1 Nov 2020	4256 MRU10001	Birth Transfer Death	AJANG
558	M	16 Mar 2018	335	374	WARSAW	16 Mar 2018 3 Jun 2020	S7482	Birth Death	Yang
560	M	26 Mar 2018	394	238	YULEE	26 Mar 2018 19 Aug 2020	184019	Birth Death	Mowgli
=====									
TOTALS: 5.4.0 (9)									

### 6.3 Transfers in 2020

Stud#	Sex	Birth Date	Sire	Dam	Location	Date	LocalID	Event	Name
266	F	22 Dec 1999	106	209	SD-WAP KANAZAWA TOKYOTAMA	22 Dec 1999 19 Mar 2003 9 Dec 2020	699614 03 9458	Birth Transfer Transfer	Gopon
470	F	3 Nov 2012	343	185	ROTTERDAM GUERNO FOTA	3 Nov 2012 13 Apr 2015 23 Jan 2020	Z12389 MRU12002 5637	Birth Transfer Transfer	MAYA
487	M	13 Oct 2013	351	325	ALBUSTAN SINGAPORE	13 Oct 2013 2 Nov 2020	GIR003 G18140	Birth Transfer	THULIE
529	F	22 Oct 2016	265	229	LISIEUX Z GUERNO	22 Oct 2016 3 Jun 2020	M16138	Birth Transfer	Sundara
541	M	12 Jul 2016	249	325	ALBUSTAN SINGAPORE	12 Jul 2016 2 Nov 2020	GIR004 G18141	Birth Transfer	Newari
556	F	16 Jan 2018	336	360	BEAUVAL MADRID Z	16 Jan 2018 1 Dec 2020	M02297	Birth Transfer	Sananda
559	M	3 May 2018	339	376	CHESTER SZEGED	3 May 2018 13 Oct 2020	C18418 UND	Birth Transfer	Akemo
562	M	9 Jul 2018	351	372	SD-WAP HEMKER GF	9 Jul 2018 14 Sep 2020	618270 754	Birth Transfer	Tio
563	M	26 Sep 2018	333	407	NYIREGYHA SZEGED	26 Sep 2018 17 Aug 2020	M13601 4349	Birth Transfer	Cs□l“k
=====									
TOTALS: 5.4.0 (9)									

## 7 Appendix I – Historical Studbook Population

Stud#	Sex	Birth Date	Sire	Dam	Location	Date	LocalID	Event	Name
1	M	~ 1959	WILD	WILD	ASSAM P ASSAM MYSORE	???? ~ 1965 24 Apr 1965 30 Apr 1979	NONE	Capture Transfer Transfer Death	Kasi
2	F	????	WILD	WILD	KAZIRANGA SHIP CHICAGOBR	???? 15 May 1948 21 Jun 1948 6 May 1968	NONE 20037	Capture Transfer Transfer Death	Kamala Rani
3	M	????	WILD	WILD	KAZIRANGA CHICAGOBR	~ 1948 21 Jun 1948 13 Nov 1970	NONE 20035	Capture Transfer Death	Kashi Ram
4	F	16 May 1948	WILD	2	SHIP	16 May 1948 16 May 1948		Birth Death	
5	M	????	WILD	WILD	KAZIRANGA BASEL	???? 30 May 1951 25 Nov 1964	NONE 510001	Capture Transfer Death	Gadadhar
6	M	~ 1949	WILD	WILD	KAZIRANGA ROMA	???? 5 Sep 1951 28 Feb 1983	NONE	Capture Transfer Death	Tomy
7	F	~ 1951	WILD	WILD	KAZIRANGA BASEL	???? 8 Jul 1952 10 Nov 1983	NONE 520016	Capture Transfer Death	Joymothi
8	F	~ 1950	WILD	WILD	KAZIRANGA WHIPNADE LONDON RP AMSTERDAM	???? 16 Jul 1952 24 May 1974 26 Apr 1976 25 Apr 1985	NONE 2139 5424	Capture Transfer Transfer Loan to Death	Mohini
9	F	~ 1949	WILD	WILD	ASSAM P PHILADELP SD-WAP	~ 1949 17 Jun 1953 7 Dec 1976 12 May 1977	NONE 100248 101985	Capture Transfer Loan to Death	Kanaklota
10	M	????	WILD	WILD	ASSAM P PHILADELP	???? 14 Sep 1955 6 Jan 1996	NONE 100249	Capture Transfer Death	Billy/Kanakb
11	F	~ 1954	WILD	WILD	ASSAM P MYSORE	???? 4 Aug 1956 7 May 1992	NONE 560003	Capture Transfer Death	Rani
12	M	~ 1950	WILD	WILD	KAZIRANGA TRIVANDRU	???? 29 May 1956 16 Feb 1987	NONE	Capture Transfer Death	Mony
13	M	~ 1946	WILD	WILD	KAZIRANGA WHIPNADE	???? 7 Aug 1947 7 Mar 1961	NONE 2138	Capture Transfer Death	Mohan
14	M	14 Sep 1956	5	7	BASEL MILWAUKEE	14 Sep 1956 20 Jul 1959 6 Feb 1987	560017 202	Birth Transfer Death	Rudra
15	F	29 Oct 1957	13	8	WHIPNADE MILWAUKEE	29 Oct 1957 20 Jul 1959 24 Jun 1975	2140 203	Birth Transfer Death	Mohinija
16	F	~ 1956	WILD	WILD	KAZIRANGA HAMBURG BASEL HAMBURG BASEL HAMBURG LOSANGELE	???? 11 Aug 1957 21 Sep 1962 28 May 1963 3 Nov 1965 13 Apr 1966 25 May 1968 22 Jan 1971	NONE 620020 620020 04427	Capture Transfer Loan to Transfer Loan to Transfer Transfer Death	Nepali II
17	F	17 Aug 1958	5	7	BASEL	17 Aug 1958 4 Jan 1973	580018	Birth Death	Moola

18	M	~ 1957	WILD	WILD	KAZIRANGA BERLINZOO BASEL	???? 22 Sep 1959 8 Jul 1965 15 Apr 1983	NONE 650023	Capture Transfer Transfer Death	Arjun
19	M	~ 1957	WILD	WILD	INDIA NZP-WASH NY BRONX OKLAHOMA	???? 26 May 1960 2 Apr 1981 19 Dec 1983 25 Sep 1989	NONE 28053 811058 238503	Capture Transfer Loan to Loan to Death	Tarun
20	M	18 Aug 1960	13	8	WHIPSSNADE	18 Aug 1960 25 Apr 1975	2141	Birth Death	Manik
21	F	~ 1946	WILD	WILD	KAZIRANGA KOLKATA TOKYOTAMA	???? 6 Jun 1961 16 Aug 1961 3 Dec 1991	NONE 3422	Capture Transfer Transfer Death	Launie/Rani
22	M	~ 1957	WILD	WILD	KAZIRANGA TOKYOTAMA	???? 10 Nov 1958 16 Jul 1995	NONE 267	Capture Transfer Death	Tamao
23	F	12 Jun 1961	WILD	21	KOLKATA	12 Jun 1961 14 Aug 1982		Birth Death	Sneha
24	M	~ 1955	WILD	WILD	KAZIRANGA ASSAM	~ Sep 1960 24 Sep 1960 23 Sep 1984	NONE 100005	Capture Transfer Death	Shivaji
25	F	~ 1956	WILD	WILD	KAZIRANGA ASSAM	25 Sep 1965 29 Sep 1965 19 Oct 1982	NONE 1000011	Capture Transfer Death	Padmini Jr.
26	M	31 Aug 1962	5	7	BASEL SANDIEGOZ SD-WAP WILDS	31 Aug 1962 12 Oct 1963 26 Apr 1972 27 Jun 1995 8 Sep 1995	620019 100289 100289 950701	Birth Transfer Transfer Loan to Death	Lasai
27	M	9 Mar 1963	5	17	BASEL PARIS ZOO	9 Mar 1963 29 Sep 1964 26 Feb 1974	630021 264227	Birth Transfer Death	Khunlai
28	F	10 Apr 1963	WILD	30	ASSAM NZP-WASH	10 Apr 1963 16 Dec 1963 9 Sep 1980	100008 29607	Birth Transfer Death	Rajkumari
29	F	10 Jul 1963	24	82	ASSAM SANDIEGOZ SD-WAP GULF BREZ	10 Jul 1963 28 Feb 1965 26 Apr 1972 7 Nov 1995 9 Jan 2004	100009 100288 100288 A1857	Birth Transfer Transfer Loan to Death	Jaypuri
30	F	~ 1952	WILD	WILD	WILD ASSAM NZP-WASH	29 Oct 1962 29 Oct 1962 15 Nov 1963 28 Dec 1963	NONE 100007 29606	Capture Transfer Transfer Death	Deepali Sr.
31	F	12 Jun 1964	5	7	BASEL BERLINZOO BASEL BERLINZOO BASEL BERLINZOO	12 Jun 1964 6 Jul 1965 8 Aug 1970 28 Apr 1971 10 Jun 1974 6 May 1975 2 Mar 1993	640022 650017 640022 650017 640022 650017	Birth Transfer Loan to Transfer Loan to Transfer Death	Miris
32	M	11 Aug 1964	5	16	HAMBURG BERLINZOO	11 Aug 1964 6 Aug 1965 9 Dec 1993	650016	Birth Transfer Death	Gauhati
33	M	~ Apr 1960	WILD	291	KAZIRANGA ASSAM DELHI	~ Apr 1960 29 Jun 1960 24 Nov 1965 5 Jul 1988	NONE 100004	Birth Transfer Transfer Death	Mohan jr
34	F	25 Aug 1965	5	17	BASEL STUTTGART BASEL STUTTGART BASEL STUTTGART	25 Aug 1965 29 May 1968 3 Jun 1969 9 Jun 1970 19 Jul 1973 24 Oct 1973 13 Jul 1992	650024 1784 650024 1784 650024 1784	Birth Transfer Loan to Transfer Loan to Transfer Death	Nanda
35	M	~ 1965	WILD	WILD	ASSAM P	~ 1965	NONE	Capture	Herman

					LOSANGELE	7 Feb 1966	01743	Transfer	
						31 May 2001		Death	
36	M	11 Jun 1967	22	21	TOKYOTAMA	11 Jun 1967	_____	Birth	
						11 Jun 1967		Death	
37	F	~ 1966	WILD	WILD	NEPAL	????	NONE	Capture	Kanchi
					BERLIN TP	6 Aug 1966	_____	Transfer	
						9 Jan 1967		Death	
38	F	9 Apr 1967	18	16	HAMBURG	9 Apr 1967	296	Birth	Shita
					BERLINZOO	12 Apr 1983	_____	Loan to	
					HAMBURG	13 Jun 1985	296	Transfer	
					SINGAPORE	8 Jan 1994	G2430	Transfer	
						15 Jun 1999		Death	
39	M	7 Jul 1967	18	7	BASEL	7 Jul 1967	670021	Birth	Pandur
					HAMBURG	5 Sep 1968	297	Transfer	
					SINGAPORE	8 Jan 1994	G2429	Transfer	
						4 Feb 1994		Death	
40	F	~ May 1967	WILD	WILD	NEPAL	????	NONE	Capture	Kumari
					BERLIN TP	1 Aug 1967	M00120	Transfer	
						1 Oct 2003		Death	
41	M	22 Dec 1967	18	17	BASEL	22 Dec 1967	670022	Birth	Puri
					STUTTGART	3 Jun 1969	2005	Transfer	
						20 Feb 1997		Death	
42	M	13 Feb 1968	1	11	MYSORE	13 Feb 1968	_____	Birth	Mysore
					BERLIN TP	24 Apr 1971	_____	Transfer	
						23 Dec 1996		Death	
43	F	~ 1962	WILD	WILD	KAZIRANGA	????	NONE	Capture	Rangi/Rongi
					DELHI	28 Mar 1968	_____	Transfer	
						10 Nov 1984		Death	
44	M	27 Apr 1969	18	7	BASEL	27 Apr 1969	690023	Birth	Ruedi
					HOUSTON	6 Oct 1970	_____	Transfer	
						9 Feb 1971		Death	
45	F	5 Oct 1969	18	17	BASEL	5 Oct 1969	690025	Birth	Rhonda
					HOUSTON	6 Oct 1970	_____	Transfer	
					BROWNSVIL	6 Apr 1972	2726	Transfer	
					LOSANGELE	22 Nov 1974	07940	Transfer	
						5 Nov 2017		Death	
46	F	23 Apr 1967	WILD	WILD	ASSAM P	23 Dec 1967	NONE	Capture	Radha
					ASSAM	23 Dec 1967	1000012	Transfer	
					LOSANGELE	30 Nov 1969	92900	Transfer	
						10 Nov 1988		Death	
48	F	15 Jul 1968	WILD	WILD	KAZIRANGA	29 Jul 1968	NONE	Capture	Gotangi
					ASSAM	29 Jul 1968	1000014	Transfer	
					OMAHA	23 Jan 1970	_____	Transfer	
						31 Jan 1970		Death	
49	M	~ 1969	WILD	WILD	NEPAL	????	NONE	Capture	Mohan
					METROZOO	23 Apr 1970	107	Transfer	
					NZP-WASH	14 Jun 1998	113332	Loan to	
					YULEE	4 Jun 2003	Y34302	Loan to	
					METROZOO	17 Mar 2006	107	Transfer	
						7 Jan 2013		Death	
50	F	~ 1964	WILD	WILD	WILD	~ 1970	NONE	Capture	Shanti
					METROZOO	12 Jun 1970	108	Transfer	
					PHILADELP	10 Apr 1987	101589	Loan to	
					NY BRONX	22 Nov 1988	881458	Loan to	
					METROZOO	28 Mar 1990	108	Transfer	
					NY BRONX	29 May 1996	881458	Loan to	
					METROZOO	12 Oct 1996	108	Transfer	
						17 Jul 2003		Death	
51	F	27 Jan 1971	33	43	DELHI	27 Jan 1971	_____	Birth	Roopa
					WHIPSDNAE	6 Feb 1973	L259	Transfer	
						4 Nov 2008		Death	
52	F	30 Jan 1967	14	15	MILWAUKEE	30 Jan 1967	X02215	Birth	
						30 Jan 1967		Death	
53	M	16 Apr 1971	1	11	MYSORE	16 Apr 1971	_____	Birth	Vinu
					GELSNKRKN	28 Aug 1975	_____	Transfer	
					TORONTO	28 Jun 1976	7720	Transfer	
					NY BRONX	30 May 1990	901264	Loan to	
						21 Jun 2012		Death	

54	F	16 Jul 1971	18	34	STUTTGART	16 Jul 1971 16 Jul 1971	3383	Birth Death	
55	F	11 Aug 1971	18	17	BASEL ANTWERP PLANCKNDL	11 Aug 1971 7 Sep 1972 4 Nov 1978 1 Dec 2011	710026 M5235 184003	Birth Transfer Transfer Death	Zutuma/Tutum
56	F	24 Aug 1971	18	7	BASEL	24 Aug 1971 17 Feb 1996	710027	Birth Death	Tanaya
57	M	12 Sep 1971	24	25	ASSAM NAGOYA	12 Sep 1971 2 Oct 1974 6 Jul 2008	1000021 10331	Birth Transfer Death	Sanver
58	M	25 Nov 1971	76	77	HYDERABAD	25 Nov 1971 11 Aug 1983		Birth Death	Rajesh
60	M	4 Apr 1972	18	31	BERLINZOO AMSTERDAM WHIPSNADE	4 Apr 1972 15 Jun 1973 23 Apr 1976 15 Oct 2002		Birth Transfer Transfer Death	Kumar
61	M	~ 1975	WILD	WILD	KAZIRANGA ASSAM MYSORE	~ 1980 28 Jan 1980 23 Jan 1985 2 Aug 2002	NONE 1000045	Capture Transfer Transfer Death	Muniya
62	M	~ 1951	WILD	WILD	ASSAM P VEERMATA	???? 14 Apr 1952 14 Sep 1980	NONE	Capture Transfer Death	Lacit
63	M	~ 1965	WILD	WILD	NEPAL OMAHA	???? 9 Sep 1966 24 Feb 1975	NONE 249	Capture Transfer Death	Tiny
64	F	~ Sep 1973	WILD	WILD	ASSAM P ASSAM NAGOYA	~ 1974 3 Jan 1974 2 Oct 1974 3 Feb 2001	NONE 1000025 10332	Capture Transfer Transfer Death	Jaya
65	M	20 Dec 1973	22	21	TOKYOTAMA AMSTERDAM	20 Dec 1973 12 Dec 1978 24 May 1989	3423 M78029	Birth Transfer Death	Ar-3 Saitaro
66	F	~ Apr 1973	WILD	WILD	KAZIRANGA ASSAM NY BRONX	???? 14 Aug 1973 30 Jan 1975 6 Jul 2004	NONE 1000024 751511	Capture Transfer Transfer Death	Mayang Kumar
67	F	~ Jun 1973	WILD	WILD	ASSAM P ASSAM NY BRONX	~ 1973 21 Jun 1973 30 Jan 1975 12 Jul 1996	NONE 1000022 751512	Capture Transfer Transfer Death	Radha
68	M	3 Jan 1974	18	7	BASEL	3 Jan 1974 3 Jan 1974	740028	Birth Death	
69	M	30 Jan 1974	19	28	NZP-WASH NY BRONX TORONTO YULEE	30 Jan 1974 30 Oct 1975 16 Jun 1989 13 Apr 2006 12 Oct 2015	100859 01821 24640 Y64305	Birth Loan to Loan to Transfer Death	Patrick
70	M	23 May 1974	24	25	ASSAM KANPUR	23 May 1974 4 Mar 1977 ~ 2016	1000027 0301	Birth Transfer Death	Lachit
71	M	5 Dec 1974	18	34	STUTTGART GELSNKRKN SAO PAULO	5 Dec 1974 23 Nov 1976 31 Oct 1977 13 Jun 1997	2655 9895	Birth Transfer Transfer Death	Nabob
72	M	~ 1959	WILD	WILD	NEPAL BEIJING	???? 15 Jul 1959 12 Nov 1978	NONE	Capture Transfer Death	Xiangka
73	M	~ 1969	WILD	WILD	ASSAM P ASSAM ANTWERP PLANCKNDL	???? 30 Jul 1970 23 Mar 1971 24 Nov 1978 16 Oct 1988	NONE 1000019 M4769 184002	Capture Transfer Transfer Transfer Death	Yassam
74	M	~ 1933	WILD	WILD	NEPAL ST LOUIS	???? 19 Jan 1934 31 Dec 1961	NONE	Capture Transfer Death	Harry

75	M	~ 1953	WILD	WILD	WILD MADRAS	???? 9 Jun 1953 15 Jun 1980	NONE	Capture Transfer Death	Kushal
76	M	~ 1962	WILD	WILD	ASSAM P ASSAM HYDERABAD	28 Jun 1962 28 Aug 1962 16 Jun 1964 19 Aug 1983	NONE 100006	Capture Transfer Transfer Death	Rajkumar
77	F	~ 1963	WILD	WILD	KAZIRANGA HYDERABAD	???? 26 Jun 1968 19 Aug 1983	NONE	Capture Transfer Death	Padma
78	M	24 Mar 1975	26	29	SD-WAP	24 Mar 1975 25 Mar 1975	013056	Birth Death	
79	F	19 Jul 1975	1	11	MYSORE GELSNKRKN TORONTO	19 Jul 1975 25 Jun 1976 27 Apr 1979 5 Jul 2007	11554	Birth Transfer Transfer Death	Indira
80	F	10 Oct 1975	18	7	BASEL PHILADELP	10 Oct 1975 7 Nov 1979 20 Jul 2011	750029 100925	Birth Transfer Death	Xavira
81	M	~ 1969	WILD	WILD	KAZIRANGA ASSAM BROWNSVIL	???? 28 Jun 1971 12 Sep 1973 3 Dec 1973	NONE 1000020 2727	Capture Transfer Transfer Death	Radjah
82	F	5 Oct 1948	WILD	WILD	KAZIRANGA ASSAM	5 Oct 1958 5 Oct 1958 28 Oct 1964	NONE 100002	Capture Transfer Death	Padmini seni
83	M	18 Feb 1976	18	31	BERLINZOO OKLAHOMA NY BRONX	18 Feb 1976 12 Jul 1981 23 Dec 1983 7 Jun 2000	968001 831391	Birth Transfer Loan to Death	Heiner
84	M	26 Mar 1976	18	56	BASEL GELSNKRKN KOLN	26 Mar 1976 2 Nov 1977 2 Nov 1978 8 Sep 1987	760030 461	Birth Loan to Transfer Death	Ypsilon Yama
85	M	18 Oct 1976	26	29	SD-WAP	18 Oct 1976 20 Oct 1976	101932	Birth Death	Maharaja
86	M	21 Sep 1977	41	34	STUTTGART DVURKRALV SINGAPORE	21 Sep 1977 12 Aug 1980 14 Jun 1992 8 Jul 1992	2994 057001 G1526	Birth Transfer Transfer Death	Dvityia
87	M	26 Jan 1978	18	56	BASEL PHILADELP NY BRONX MILWAUKEE WILDS	26 Jan 1978 6 Nov 1979 14 Oct 1982 29 Oct 1991 22 May 1996 5 Dec 2011	780031 100924 821339 3622 960503	Birth Loan to Transfer Loan to Loan to Death	Assam
88	M	16 Jul 1978	18	7	BASEL	16 Jul 1978 19 Nov 1978	780032	Birth Death	Angkor
89	F	13 Aug 1979	32	31	BERLINZOO OKLAHOMA LOSANGELE SD-WAP	13 Aug 1979 12 Jul 1981 17 Nov 1990 18 Feb 1997 11 Sep 2001	968102 95967 697059	Birth Transfer Loan to Loan to Death	Terai
90	M	????	WILD	WILD	ASSAM P LUCKNOW	???? 30 Mar 1959 6 May 1979	NONE	Capture Transfer Death	Jai Singh
91	M	~ Nov 1976	WILD	WILD	ASSAM P ASSAM LUCKNOW	~ Nov 1976 13 Nov 1976 17 Oct 1979 18 Jan 1980	NONE	Capture Transfer Transfer Death	Sanjai
92	F	~21 Apr 1978	WILD	WILD	ASSAM P ASSAM LUCKNOW	~ 1978 24 Apr 1978 17 Oct 1979 1 Jan 1985	NONE	Capture Transfer Transfer Death	Krishyna Jr.
93	F	13 Sep 1979	41	34	STUTTGART DVURKRALV LISBON	13 Sep 1979 21 Jul 1981 16 Mar 2009	3124 057002 10717	Birth Transfer Loan to	Numa

						20 Feb 2013		Death	
94	M	~ 1969	WILD	WILD	KAZIRANGA ASSAM KOLKATA	???? 12 Feb 1974 14 Mar 1974 13 Jan 2003	NONE 100026	Capture Transfer Transfer Death	Meghnad
95	F	~ 1974	WILD	WILD	KAZIRANGA ASSAM KOLKATA	~ Aug 1974 22 Oct 1974 30 Nov 1974 9 Aug 2004	NONE 100030	Capture Transfer Transfer Death	Kadambini
96	M	12 Nov 1978	76	77	HYDERABAD	12 Nov 1978 6 Aug 2001		Birth Death	Laddu
97	F	9 Jan 1979	94	23	KOLKATA KOLN SINGAPORE	9 Jan 1979 10 Mar 1986 2 May 1997	462 G4844	Birth Transfer Transfer	Gomati
98	F	~ 1978	WILD	WILD	NEPAL BEIJING	~ 1978 9 Oct 1980 7 Nov 2009	NONE	Capture Transfer Death	Bang Ti
99	F	19 Mar 1978	26	29	SD-WAP PEACE RV	19 Mar 1978 9 May 2004 15 Dec 2004	102575 104147	Birth Transfer Death	Gainda
T2	M	~ Jun 2017	WILD	WILD	NEPAL QINGYUAN	~ Dec 2017 ~ Jun 2018	NONE	Capture Transfer	Badhra
T3	F	~ Jun 2016	WILD	WILD	NEPAL QINGYUAN	~ Dec 2017 30 Jun 2018	NONE	Capture Transfer	Rupasi
100	M	11 Jan 1980	18	56	BASEL	11 Jan 1980 13 Nov 1995	800033	Birth Death	Chitawan
101	M	8 Aug 1980	26	29	SD-WAP SANDIEGOZ NZP-WASH PHILADELPH MONTGOMRY TANGAN WP VALDOSTA	8 Aug 1980 4 Nov 1982 1 Jul 1985 12 Feb 1993 9 Jul 1996 5 May 1998 8 Apr 2008 8 Mar 2011 20 Dec 2011	103996 103996 106574 106574 103314 2499 11M003	Birth Loan to Loan to Transfer Loan to Transfer Transfer Loan to Death	Pandu/Sport
102	M	3 Nov 1980	73	55	PLANCKNDL	3 Nov 1980 7 Nov 1980		Birth Death	
103	M	????	WILD	WILD	NEPAL RANGOON	???? 27 Aug 1980 1 Jun 1993	NONE	Capture Transfer Death	Bhunti
104	F	????	WILD	WILD	NEPAL RANGOON	???? 27 Aug 1980 1 Jun 1993	NONE	Capture Transfer Death	Loorie
105	F	~ 1942	WILD	WILD	NEPAL LUCKNOW	???? 2 Feb 1944 2 Apr 1973	NONE	Capture Transfer Death	Rosy
106	M	15 May 1981	76	77	HYDERABAD SD-WAP SANDIEGOZ SD-WAP FORTWORTH TANGAN WP CARSON	15 May 1981 10 Sep 1983 30 Nov 1983 29 May 1985 16 May 2001 3 Jul 2008 18 Nov 2016	783639 783639 783639 200677 A81202	Birth Transfer Transfer Transfer Loan to Loan to Transfer	Rabha
107	F	21 May 1981	60	51	WHIPSDADE	21 May 1981 21 May 1981	2142	Birth Death	
108	M	~ 1981	WILD	WILD	NEPAL BEIJING	???? 20 Oct 1981 26 Nov 1981	NONE	Capture Transfer Death	Kamat
109	M	30 Aug 1981	41	34	STUTTGART ROTTERDAM SINGAPORE CHIANG MA	30 Aug 1981 13 Apr 1983 29 May 1990 15 Dec 1994 2 Jan 2002	3125 102453 G45	Birth Loan to Loan to Loan to Death	Nadir
110	F	16 Jan 1982	18	56	BASEL	16 Jan 1982 4 Jun 2015	820034	Birth Death	Ellora
111	F	16 Feb 1982	35	46	LOSANGELE	16 Feb 1982	94307	Birth	Meetha



					SD-WAP	18 Jun 1985 3 Jul 1985	028842	Loan to Death	
112	M	25 Jul 1982	26	99	SD-WAP SANDIEGOZ SEOUL	25 Jul 1982 5 Jul 1983 27 Oct 1983 21 Jun 1990	682461 682461	Birth Transfer Transfer Death	Tezpur
113	F	9 Aug 1982	73	55	PLANCKNDL	9 Aug 1982 13 Jun 2020	184004	Birth Death	Johanna
114	F	~ 1980	WILD	WILD	NEPAL KATHMANDU	???? 17 May 1980 27 Jan 1990	NONE	Capture Transfer Death	
115	M	9 Mar 1983	60	51	WHIPNADE PLANCKNDL	9 Mar 1983 3 Oct 1985 22 Oct 1999	2143 184005	Birth Transfer Death	Bheema
116	M	1 May 1983	26	29	SD-WAP SANDIEGOZ LOWRY EVANSVILLE	1 May 1983 5 Jun 1985 17 Sep 1988 30 May 2001 7 Nov 2008	683352 683352 100123 101031	Birth Loan to Loan to Loan to Death	Jorhat
117	M	12 Jul 1983	41	34	STUTTGART MAGDEBURG KANAZAWA	12 Jul 1983 24 Oct 1984 27 Aug 1985	3126 399001 01	Birth Transfer Transfer	Kintaro
118	F	25 Feb 1984	10	80	PHILADELP	25 Feb 1984 26 Feb 1984	101286	Birth Death	
119	M	29 Feb 1984	18	56	BASEL	29 Feb 1984 11 Mar 1985	840035	Birth Death	Gandak
120	F	9 Aug 1982	35	45	LOSANGELE	9 Aug 1982 9 Aug 1982	000948	Birth Death	
121	M	16 Dec 1983	35	45	LOSANGELE	16 Dec 1983 16 Dec 1983	N00204	Birth Death	
122	F	1 Oct 1982	70	128	KANPUR KANAZAWA	1 Oct 1982 4 Dec 1985 4 Jan 1995		Birth Transfer Death	Sawako
123	M	29 Jan 1985	41	34	STUTTGART KOLN STUTTGART	29 Jan 1985 9 Dec 1987 23 Apr 1997	3127 597 3127	Birth Loan to Transfer	Bruno
124	M	25 Jun 1985	26	99	SD-WAP SANDIEGOZ SINGAPORE	25 Jun 1985 21 Nov 1988 26 Oct 1989 20 Jul 2015	028851 028851 G42	Birth Transfer Loan to Death	Gurkah
125	M	11 Aug 1985	35	46	LOSANGELE OKLAHOMA	11 Aug 1985 15 Nov 1990	002213 542705	Birth Loan to	Chandra
126	M	3 Nov 1985	10	80	PHILADELP METROZOO	3 Nov 1985 6 Apr 1987 1 Jan 1999 22 Nov 2002	101430 M00755 M00755	Birth Loan to Ownership Death	Akbar
127	M	23 Nov 1985	42	40	BERLIN TP	23 Nov 1985 23 Nov 1985		Birth Death	
128	F	~ May 1973	WILD	WILD	ASSAM P ASSAM KANPUR LUCKNOW HYDERABAD	???? 11 Aug 1973 4 Mar 1977 30 Apr 1997 23 Sep 1999 13 Jan 2007	NONE 1000023 0302	Capture Transfer Transfer Transfer Death	Maya
129	M	6 Dec 1984	70	128	KANPUR LUCKNOW	6 Dec 1984 6 Apr 1995	0305 063	Birth Transfer	Lohit
130	F	18 Jan 1986	26	29	SD-WAP	18 Jan 1986 11 Jan 2005	005257	Birth Death	Jumia
131	F	9 Apr 1986	83	66	NY BRONX	9 Apr 1986 17 Jul 2020	861069	Birth Death	Ellah
132	M	9 Aug 1986	60	51	WHIPNADE CHESTER BERLINZOO	9 Aug 1986 3 Dec 1987 13 Oct 1998 30 Jul 2017	2144 1652 980245	Birth Loan to Loan to Death	Yodha

133	F	10 Oct 1986	35	45	LOSANGELE	10 Oct 1986 10 Oct 1986	N00287	Birth Death	
134	M	24 Oct 1986	73	55	PLANCKNDL ROTTERDAM TERRA NAT	24 Oct 1986 9 Oct 1990 17 Aug 2007 28 Oct 2019	184006 104083 RI003	Birth Loan to Loan to Death	Nico
135	M	24 Dec 1986	41	34	STUTTGART NURNBERG	24 Dec 1986 1 Dec 1989 30 Aug 2006	3333 M00470	Birth Transfer Death	Noel
136	M	~ 1986	WILD	WILD	CHITWAN SAN FRAN	???? 26 May 1987 6 Sep 1996	NONE 187048	Capture Transfer Death	Chhendra
137	F	~ 1986	WILD	WILD	CHITWAN SAN FRAN SD-WAP FORTWORTH OKLAHOMA	???? 26 May 1987 27 Nov 1996 9 Mar 2010 20 Feb 2019	NONE 187049 696602 206258 774813	Capture Transfer Loan to Loan to Loan to	Shanti
138	F	~ 1986	WILD	WILD	CHITWAN NZP-WASH PHILADELP NZP-WASH YULEE EVANSVILLE	???? 27 May 1987 10 May 1994 20 Oct 1994 3 Jun 2003 11 Nov 2009	NONE 107663 102924 107663 Y34303 109014	Capture Transfer Loan to Transfer Loan to Loan to	Mechi
139	F	~ 1986	WILD	WILD	CHITWAN NZP-WASH NY BRONX	???? 27 May 1987 23 Apr 1998	NONE 107664 981044	Capture Transfer Loan to	Kali
140	M	17 Jun 1987	70	128	KANPUR HYDERABAD	17 Jun 1987 1 Mar 2003 ~ 2012	0306	Birth Transfer Death	Mohit
141	M	4 Nov 1987	86	93	DVURKRALV LIBEREC BEIJING	4 Nov 1987 9 Nov 1989 20 Dec 2001	057004 629001	Birth Transfer Transfer	Nim
142	M	7 Jan 1987	26	29	SD-WAP	7 Jan 1987 7 Jan 1987	687013	Birth Death	
143	F	28 May 1987	26	99	SD-WAP RUM CREEK	28 May 1987 7 Dec 2009	687346 109090	Birth Transfer	Goalpara
144	F	~ 1987	WILD	WILD	NEPAL BERLINZOO BERLIN TP BERLINZOO EUROPA	~ 1987 15 May 1988 3 Jun 2002 3 Sep 2003 1 Jul 2019	NONE 880090 M02026 880090	Capture Transfer Loan to Transfer Loan to	Narayani
145	M	8 May 1988	60	51	WHIPNADE DVURKRALV NURNBERG	8 May 1988 16 Nov 1990 28 Nov 2006 1 Oct 2017	L261 057005 M02586	Birth Loan to Loan to Death	Ropen
146	M	22 May 1988	26	29	SD-WAP SANDIEGOZ ROLLING H	22 May 1988 13 Sep 1990 6 Apr 1995 9 Jun 2021	688293 688293 950029	Birth Transfer Loan to Death	Joya
147	M	14 Aug 1988	10	80	PHILADELP CINCINNAT	14 Aug 1988 25 Oct 1989 3 Jun 2004	101728 189167	Birth Loan to Death	Jimmy
148	F	4 Oct 1988	100	56	BASEL MUNICH BEAUVAL	4 Oct 1988 12 Jul 1990 16 Feb 2011 2 Jan 2012	880036 079002 M01056	Birth Transfer Loan to Death	Nasi
149	F	11 Dec 1988	100	110	BASEL	11 Dec 1988 11 Dec 1988	880037	Birth Death	
150	M	4 Jun 1984	94	95	KOLKATA	4 Jun 1984 13 Nov 2000		Birth Death	Debraj
151	M	~ 1970	WILD	WILD	KAZIRANGA ASSAM DELHI	???? 5 May 1982 23 Jan 1983 24 Apr 2001	NONE 1000053	Capture Transfer Transfer Death	Dabbu Agni
152	M	27 Nov 1988	41	34	STUTTGART MUNICH	27 Nov 1988 12 Jun 1990	3869 079003	Birth Loan to	Nikolaus

153	F	~ Jun 1974	WILD	WILD	WILD ASSAM	8 Sep 1974 16 Sep 1974 ~ 2010	NONE 1000029	Capture Transfer Death	Numali
154	M	~ Jan 1974	WILD	WILD	ASSAM P ASSAM NANDANKAN	~ 1977 22 Aug 1977 2 Dec 1979 28 Sep 2016	NONE 1000036 4002	Capture Transfer Transfer Death	Nandan
155	F	~ Jan 1974	WILD	WILD	ASSAM P ASSAM PATNA RANCHI	???? 21 Jul 1974 28 May 1979 4 Dec 1996 ~ Jun 2013	NONE 1000028 R-PAT-1	Capture Transfer Transfer Transfer Death	Kancha
156	M	~ Apr 1977	WILD	WILD	ASSAM P ASSAM PATNA	~ 1977 19 Aug 1977 28 May 1979 ~ 2016	430803 1000035 R-PAT-2	Capture Transfer Transfer Death	Kancha
157	M	16 Jan 1982	WILD	WILD	BIHAR PATNA	~ 1982 28 Mar 1982 2 Apr 1995	430804 R-PAT-3	Capture Transfer Death	Raju
158	F	25 Oct 1986	157	155	PATNA	25 Oct 1986 25 Oct 1986		Birth Death	
159	F	8 Jul 1988	157	155	PATNA	8 Jul 1988	R-PAT-4	Birth	Hartali
160	M	23 Jun 1989	70	128	KANPUR	23 Jun 1989 ~ Dec 2014	0307	Birth Death	Rohit
161	F	5 Sep 1989	83	66	NY BRONX OKLAHOMA SINGAPORE	5 Sep 1989 5 Sep 1989 8 Nov 1993 18 Apr 2009	891296 513604 513604 G11361	Birth Ownership Transfer Transfer	Mary
162	M	2 Oct 1989	60	51	WHIPSDADE	2 Oct 1989 15 Sep 1995	L262	Birth Death	Bardia
163	F	20 Apr 1989	106	99	SD-WAP	20 Apr 1989 20 Apr 1989	689183	Birth Death	
164	M	????	WILD	WILD	NEPAL SINGAPORE	???? 7 May 1990 6 Jan 1999	NONE G43	Capture Transfer Death	Karnak
165	F	~ Oct 1989	WILD	WILD	NEPAL SINGAPORE	???? 7 May 1990 2 Nov 1991	NONE G44	Capture Transfer Death	Kanchan
166	M	1 Jan 1990	42	40	BERLIN TP BERLINZOO BERLIN TP BERLINZOO NURNBERG	1 Jan 1990 21 Jun 1993 10 Jun 1997 27 Sep 2019 ~10 Oct 2019	M00119 930236 M00119 930236	Birth Loan to Transfer Transfer Transfer	Belur
167	F	14 Jan 1986	86	93	DVURKRALV	14 Jan 1986 27 Feb 1986	057003	Birth Death	Nely
168	F	9 Jan 1978	24	25	ASSAM	9 Jan 1978 11 Jan 1998	1000038	Birth Death	Lakhimini
169	M	~ 1976	WILD	WILD	WILD ASSAM	???? 27 Jan 1980 ~ 2013	NONE 1000046	Capture Transfer Death	Lakhman
170	M	~ Feb 1980	WILD	WILD	ASSAM P ASSAM	~ 1980 23 Aug 1980 22 Jan 2008	NONE 1000047	Capture Transfer Death	Jhon
171	F	~ Jun 1980	WILD	WILD	ASSAM P ASSAM	???? 23 Aug 1980 24 Jun 1999	NONE 1000048	Capture Transfer Death	Gini
172	M	~ 1962	WILD	WILD	KAZIRANGA ASSAM	~ 1982 15 Jul 1982 19 Nov 2006	NONE 1000056	Capture Transfer Death	Ganesh Jr.
173	M	11 May 1987	169	168	ASSAM	11 May 1987 ~ 2016	1000059	Birth Death	Bishnu
174	M	~ Dec 1986	WILD	WILD	ASSAM P ASSAM GORUMARA	~ 1987 25 Aug 1987 17 Oct 1995	NONE 1000060	Capture Transfer ltf	Ratul

175	M	~ Mar 1988	WILD	WILD	ASSAM P ASSAM TRIVANDRU	~ 1988 2 Sep 1988 19 May 1993	NONE 1000061	Capture Transfer Transfer	Ramu
176	M	30 Mar 1989	169	168	ASSAM	30 Mar 1989 ~ 2012	1000063	Birth Death	Mohesh
177	M	~ Jul 1988	WILD	WILD	KAZIRANGA ASSAM TRIVANDRU	~ 1989 26 Jul 1989 19 May 1993	NONE 1000065	Capture Transfer lft	Jadu
178	M	~ Jun 1989	WILD	WILD	KAZIRANGA ASSAM JALDAPARA	~ 1989 26 Jul 1989 17 Oct 1995	NONE 1000066	Capture Transfer lft	Madhu
179	M	~ May 1990	WILD	WILD	KAZIRANGA ASSAM SEPAHIJAL	~ 1990 20 Aug 1990 20 Aug 1990 ~ Jan 2014	NONE RH-1	Capture Transfer Transfer Death	Pradeep
180	M	27 Jan 1990	26	29	SD-WAP ROLLING H BATONROUG  METROZOO LOWRY	27 Jan 1990 6 Apr 1995 14 Nov 1996 19 Jun 1997 1 Oct 2003 1 Apr 2014	690037 950030 7914 7914 Y3M035 103162	Birth Loan to Loan to Transfer Loan to Loan to	Juanpur
181	M	31 May 1990	100	110	BASEL NAGOYA	31 May 1990 1 Dec 1991 19 Feb 2004	900038 10333	Birth Transfer Death	Nandi
182	F	20 Jul 1990	106	130	SD-WAP BERLIN TP STUTTGART BERLINZOO BERLIN TP BERLINZOO BERLIN TP BERLINZOO BERLIN TP BERLINZOO EUROPA	20 Jul 1990 10 Oct 1994 10 Oct 1994 3 Jun 2002 3 Sep 2003 26 Jul 2005 23 May 2006 14 Jun 2007 18 Jul 2008 26 Sep 2012 1 Jul 2019	690458 M00121 5628 M9000001 M00121 M9000001 M00121 M9000001 M00121 M9000001 M00121	Birth Loan to Ownership Loan to Loan to Loan to Loan to Loan to Loan to Loan to Loan to	Jhansi
183	F	23 Oct 1990	100	56	BASEL NAGOYA	23 Oct 1990 30 Nov 1991	910039 10006	Birth Transfer	Nilgiri
184	M	28 Dec 1990	106	99	SD-WAP LISBON LISIEUX Z PLANCKNDL ROTTERDAM PLANCKNDL	28 Dec 1990 25 Oct 1996 11 Dec 1999 20 Aug 2001 30 Apr 2015 10 Jun 2016	690732 5496 M99100 184013 Z1582 184013	Birth Loan to Loan to Loan to Loan to Loan to	Gujurat/Gujr
185	F	11 Feb 1991	41	34	STUTTGART ROTTERDAM	11 Feb 1991 16 Jun 1993	4449 104724	Birth Loan to	Namaste
186	M	5 Jul 1991	70	128	KANPUR	5 Jul 1991 31 Dec 2002		Birth Death	Mudit
187	M	24 Jul 1991	10	80	PHILADELP BUFFALO	24 Jul 1991 21 Jul 1992 30 Sep 1998 7 Jul 2011	102345 92M163 92M163	Birth Loan to Transfer Death	Henry/ Hank
188	M	22 Dec 1991	106	143	SD-WAP LISBON	22 Dec 1991 25 Oct 1996	691776 5497	Birth Loan to	Gangtok
189	F	25 Dec 1991	69	79	TORONTO CINCINNAT WILDS CINCINNAT	25 Dec 1991 22 Aug 1994 2 May 2001 5 Apr 2005 3 Jul 2014	27199 194156 101005 194156	Birth Loan to Loan to Loan to Death	Nikki
190	M	~ 1989	WILD	WILD	NEPAL FORTWORTH SD-WAP FORTWORTH	~ 1989 10 May 1990 18 May 2001 6 Nov 2008 29 Oct 2020	NONE 724 601279 724	Capture Transfer Loan to Transfer Death	Arun
191	F	~ 1989	WILD	WILD	NEPAL FORTWORTH	~ 1989 10 May 1990 2 Oct 2009	NONE 725	Capture Transfer Death	Arati
192	F	~ Jun 1990	WILD	WILD	KAZIRANGA ASSAM	~ Jun 1990 10 Aug 1991	NONE 1000071	Capture Transfer	Baghekhati

193	F	~ 1989	WILD	WILD	NEPAL MUNICH	~ 1989 15 Apr 1990	NONE 079001	Capture Transfer	Rapti
194	F	~ Apr 1982	WILD	WILD	KAZIRANGA ASSAM DELHI	~ 1982 4 Jun 1982 20 Dec 1990 25 Mar 2001	NONE 1000054	Capture Transfer Transfer Death	Mohini
195	F	23 Jan 1992	100	110	BASEL NURNBERG	23 Jan 1992 8 Jul 1993 14 Nov 2012	920040 M00471	Birth Transfer Death	Purana
196	F	3 Feb 1992	115	113	PLANCKNDL	3 Feb 1992 3 Feb 1992	184007	Birth Death	
197	M	26 Feb 1992	106	130	SD-WAP	26 Feb 1992 26 Feb 1992	692076	Birth Death	
198	F	21 Jul 1992	26	29	SD-WAP	21 Jul 1992 21 Jul 1992	692441	Birth Death	
199	M	30 Jul 1992	101	138	NZP-WASH	30 Jul 1992 30 Jul 1992	110721	Birth Death	
200	M	6 Nov 1992	106	99	SD-WAP	6 Nov 1992 6 Nov 1992	692618	Birth Death	
201	F	15 Nov 1992	115	55	PLANCKNDL WHIPSDADE LISBON	15 Nov 1992 21 Nov 1992 24 Nov 1996 1 Jan 2002	184008 L2961 5532 5532	Birth Transfer Loan to Transfer	Teja
202	M	27 Dec 1992	151	194	DELHI PATNA	27 Dec 1992 21 Oct 2005	10001 R-PAT-13	Birth Transfer	Ayodhya
203	F	6 Jul 1991	157	155	PATNA	6 Jul 1991 6 Nov 2014	R-PAT-5	Birth Death	Rani
204	F	~ Oct 1992	WILD	WILD	CHITWAN STUTTGART	???? 30 Jun 1993 15 Oct 2019	NONE 5143	Capture Transfer Death	Sani
205	M	15 Jan 1993	101	139	NZP-WASH	15 Jan 1993 15 Jan 1993	110875	Birth Death	
206	M	22 Feb 1993	100	56	BASEL SINGAPORE	22 Feb 1993 29 Apr 1995 20 Nov 2006	930041 G3209	Birth Loan to Death	Quilon
207	F	1 May 1993	60	51	WHIPSDADE	1 May 1993 2 May 1993	L2025	Birth Death	
208	M	4 Aug 1993	115	113	PLANCKNDL	4 Aug 1993 4 Aug 1993	184009	Birth Death	
209	F	7 Sep 1993	26	143	SD-WAP PEACE RV RUM CREEK	7 Sep 1993 15 Dec 2004 15 Jan 2007	693536 104247 104247	Birth Transfer Transfer	Godavari
210	F	10 Oct 1993	100	110	BASEL	10 Oct 1993	930042	Birth	Quetta
215	M	????	WILD	WILD	KAZIRANGA ASSAM CHANDIGAR	???? 17 Oct 1977 14 Dec 1977 3 Jul 1993	NONE	Capture Transfer Transfer Death	Balram
216	F	~ 1971	WILD	WILD	KAZIRANGA ASSAM CHANDIGAR	???? 15 Jun 1978 29 Jul 1978 25 May 1986	NONE 100041	Capture Transfer Transfer Death	Shakuntala
217	M	~ Mar 1978	WILD	WILD	ASSAM P ASSAM VEERMATA DELHI	~ 1979 24 Apr 1979 4 Mar 1985 21 Aug 2013 18 Jun 2014	NONE 1000043 M1 10009	Capture Transfer Transfer Transfer Death	Shiva
218	M	~ May 1980	WILD	WILD	KAZIRANGA ASSAM MADRAS	???? 30 Sep 1980 17 Apr 1985 7 Jul 1989	NONE 1000049	Capture Transfer Transfer Death	Ramu
219	F	~ 1974	WILD	WILD	KAZIRANGA ASSAM KOLKATA	~ 1974 22 Oct 1974 11 Mar 1979	NONE 1000030	Capture Transfer lft	Mayuri

220	M	18 Mar 1994	106	130	SD-WAP BASEL WHIPSDNADE BASEL	18 Mar 1994 29 Mar 1996 9 Jun 2004 27 Feb 2008	694115 694115 897 694115	Birth Transfer Loan to Transfer	Jaffna
221	M	22 Mar 1994	83	66	NY BRONX	22 Mar 1994 22 Mar 1994	941030	Birth Death	
222	M	11 Sep 1994	69	79	TORONTO NZP-WASH PHILADELP TORONTO PHILADELP NY BRONX	11 Sep 1994 11 Sep 1994 26 Jan 1998 26 Jan 1998 28 Aug 1998 30 Sep 2004	30105 112251 103525 30105 103525 M04180	Birth Ownership Ownership Loan to Transfer Transfer	Sanjay
223	F	5 Oct 1994	10	80	PHILADELP NY BRONX	5 Oct 1994 2 Jul 2001 30 Sep 2004	103011 M01136 M01136	Birth Loan to Transfer	Penny
224	M	26 Nov 1994	26	29	SD-WAP GULF BREZ	26 Nov 1994 7 Nov 1995 21 Dec 2007	694673 A1858	Birth Loan to Death	Jafar
225	F	31 Jul 1984	26	29	SD-WAP	31 Jul 1984 31 Jul 1984	026310	Birth Death	
226	F	21 Jan 1995	106	182	BERLIN TP BERLINZOO	21 Jan 1995 27 Sep 2019	M00122	Birth Transfer	Betty
227	M	26 May 1995	106	99	SD-WAP SAN FRAN	26 May 1995 14 Feb 1997	695264 197006	Birth Loan to	Gauhati
228	M	24 Aug 1995	106	143	SD-WAP	24 Aug 1995 24 Aug 1995	695462	Birth Death	
229	F	12 Oct 1995	115	113	PLANCKNDL LISIEUX Z	12 Oct 1995 26 Apr 2000	184010 M00057	Birth Loan to	Winona
230	F	28 Dec 1995	53	131	NY BRONX WILDS RUM CREEK	28 Dec 1995 19 Jun 2001 22 May 2015	951230 101023 101023	Birth Loan to Loan to	Dailey
231	M	~ 1875	WILD	WILD	INDIA PHILADELP	~ 1875 13 Mar 1875 3 Jan 1901	NONE 12046	Capture Transfer Death	Pete
232	F	~ 1922	WILD	WILD	NEPAL PHILADELP	???? 24 May 1923 14 Apr 1943	NONE 10303	Capture Transfer Death	Maharane/Pe
233	M	~ 1939	WILD	WILD	ASSAM P NZP-WASH	~ 1939 7 Jul 1939 9 Jan 1959	NONE 16923	Capture Transfer Death	Gunda
234	M	19 Oct 1991	60	51	WHIPSDNADE	19 Oct 1991 20 Oct 1991	L1701	Birth Death	
235	F	22 Feb 1995	169	168	ASSAM TRIVANDRU	22 Feb 1995 6 Nov 2003 13 Dec 2004	1000074	Birth Transfer Death	Rita
236	M	4 Jan 1996	26	130	SD-WAP BROWNSVIL	4 Jan 1996 6 Mar 2000 17 Oct 2000	696004 7448	Birth Loan to Death	Jasai
237	M	13 Jul 1996	152	148	MUNICH	13 Jul 1996 13 Jul 1996	079004	Birth Death	
238	F	18 Sep 1996	101	138	NZP-WASH WILDS CINCINNAT YULEE	18 Sep 1996 21 May 1998 3 May 2001 10 Nov 2009	112925 980503 101080 Y94307	Birth Loan to Loan to Loan to	Chitwan
239	M	31 Oct 1996	101	139	NZP-WASH WILDS MONTGOMRY	31 Oct 1996 21 May 1998 11 Oct 2008 21 Feb 2020	112946 980502 3715	Birth Loan to Transfer Death	Himal (Mount
240	M	20 Nov 1996	100	110	BASEL TOKYOTAMA	20 Nov 1996 8 Oct 1998	960043 2463	Birth Transfer	Tarrh
241	F	6 Dec 1996	125	161	OKLAHOMA LOSANGELE OKLAHOMA BUFFALO	6 Dec 1996 6 Dec 1996 6 Dec 1996 6 Nov 1998	701406 005099 701406 98M146	Birth Ownership Loan to Loan to	Tashi

242	M	~ Apr 1986	WILD	WILD	NEPAL CHIANG MA	???? 22 Apr 1986 24 Jul 1986	NONE	Capture Transfer Death	
243	F	~ 1984	WILD	WILD	CHITWAN CHIANGMAI	~ Jul 1984 22 Apr 1986	NONE M08035	Capture Transfer	KARI
244	F	24 Aug 1997	106	130	SD-WAP YULEE	24 Aug 1997 17 Nov 2009 31 Mar 2015	697474 Y94309 Y94309	Birth Loan to Ownership	Jakichu
245	F	13 Sep 1997	145	93	DVURKRALV LISBON	13 Sep 1997 16 Mar 2009	057006 10718	Birth Loan to	Nova
246	F	27 Sep 1997	115	55	PLANCKNDL	27 Sep 1997 27 Sep 1997	184011	Birth Death	Y
247	F	9 Nov 1997	106	143	SD-WAP	9 Nov 1997 25 Nov 1997	697581	Birth Death	Gondia
248	M	20 Nov 1997	106	99	SD-WAP	20 Nov 1997 20 Nov 1997	697598	Birth Death	
249	M	23 Nov 1997	106	209	SD-WAP PEACE RV MICANOPY ALBUSTAN	23 Nov 1997 2 Jun 2000 27 Jan 2007 12 Mar 2013	697600 100069 GIR001	Birth Loan to Loan to Transfer	Giirja
250	M	9 May 1986	215	216	CHANDIGAR	9 May 1986 14 Apr 2004		Birth Death	Raja/Prince
251	M	28 Aug 1995	151	194	DELHI	28 Aug 1995 6 Mar 1999		Birth Death	Meghdoot
252	F	27 Nov 1997	151	194	DELHI	27 Nov 1997	10003	Birth	Maheshwari
253	M	4 Jan 1998	134	185	ROTTERDAM STUTTGART MADRID Z	4 Jan 1998 4 Jan 1998 9 Nov 1999 15 Jul 2005	105672 7176 RI1	Birth Ownership Loan to Death	Kaila Padam
254	M	27 Jul 1998	53	131	NY BRONX TORONTO LOWRY ROCKTON	27 Jul 1998 27 Jul 1998 13 Jun 2001 28 Feb 2014	981132 33979 101460 B4RU03	Birth Ownership Loan to Transfer	Arjun
255	M	21 Sep 1998	115	113	PLANCKNDL AMERSFOOR	21 Sep 1998 13 Sep 2001 19 Jul 2016	184012 M2516	Birth Loan to Death	Zimon
256	F	~ 1996	WILD	WILD	CHITWAN LONDON RP WHIPSSNADE	~ 1996 29 Apr 1997 22 Sep 1998	NONE A3568 L3165	Capture Loan to Transfer	Beluki
257	F	~ 1996	WILD	WILD	CHITWAN LONDON RP WHIPSSNADE	~ 1996 29 Apr 1997 3 Nov 1998	NONE A3569 L3188	Capture Loan to Transfer	Behan
258	M	21 Dec 1998	106	137	SD-WAP SAN FRAN SD-WAP	21 Dec 1998 21 Dec 1998 21 Dec 1998	698678 198030	Birth Ownership Death	
259	M	18 May 1999	106	143	SD-WAP SANDIEGOZ FOUTS J VALDOSTA	18 May 1999 4 Feb 2004 3 Oct 2007 8 Mar 2011	699277 699277 11M004	Birth Transfer Loan to Loan to	Gram
260	F	15 Jun 1999	170	171	ASSAM	15 Jun 1999 15 Jun 1999	1000078	Birth Death	
261	F	22 Jul 1999	152	148	MUNICH	22 Jul 1999 22 Jul 1999	079005	Birth Death	
262	M	27 Jul 1999	106	130	SD-WAP LANGLEY ROCKTON QINGYUAN	27 Jul 1999 20 Jun 2002 ~ Jun 2011 17 Apr 2014	699439 H02017 BORU01	Birth Loan to Loan to Transfer	Ivan
263	M	14 Aug 1999	57	183	NAGOYA SYDNEY DUBBO	14 Aug 1999 29 Oct 2001 1 May 2003	10334 A10433 A30069	Birth Transfer Transfer	Dora
264	F	14 Aug 1999	69	79	TORONTO WILDS	14 Aug 1999 9 Jun 2004	34890 104020	Birth Loan to	Sanya
265	M	8 Oct 1999	135	195	NURNBERG	8 Oct 1999	M01560	Birth	Albrecht

					LISIEUX Z	26 Sep 2001 22 Nov 2012	M01088 M01088	Loan to Ownership	
266	F	22 Dec 1999	106	209	SD-WAP KANAZAWA TOKYOTAMA	22 Dec 1999 19 Mar 2003 9 Dec 2020	699614 03 9458	Birth Transfer Transfer	Gopon
267	?	12 May 1975	76	77	HYDERABAD	12 May 1975 12 May 1975		Birth Death	
268	M	9 Jun 1982	24	25	ASSAM	9 Jun 1982 23 Sep 1990	100055	Birth Death	Shyam Jr.
269	F	12 Feb 2000	123	204	STUTTGART MADRID Z AMERSFOOR BASEL GUERNO	12 Feb 2000 30 Jan 2002 22 Oct 2004 21 Mar 2016 14 Nov 2017	7561 RI2 M3060 160050	Birth Loan to Loan to Loan to Loan to	Saar
270	M	4 Jul 2000	134	185	ROTTERDAM STUTTGART AMERSFOOR MADRID Z	4 Jul 2000 4 Jul 2000 13 Sep 2002 21 Oct 2004	106133 7629 M2515 RI3	Birth Ownership Loan to Loan to	Daan
271	F	22 Dec 2000	53	131	NY BRONX METROZOO MICANOPI NY BRONX	22 Dec 2000 10 Jun 2004 24 Nov 2015 1 Jun 2021	M00167 M40022 M00167	Birth Loan to Loan to Transfer	Kalu
272	F	15 Feb 2000	106	99	SD-WAP DELHI	15 Feb 2000 26 Apr 2007 29 Sep 2007	600038 10007	Birth Transfer Death	Goyona
273	M	31 Dec 2000	106	137	SD-WAP SAN FRAN SD-WAP METROZOO WILDS	31 Dec 2000 31 Dec 2000 31 Dec 2000 19 Oct 2003 12 Apr 2021	600657 100052 600657 Y3M062 121021	Birth Ownership Loan to Loan to Transfer	Suru
274	F	19 Jan 2001	106	130	SD-WAP MONTGOMRY	19 Jan 2001 11 Oct 2006 21 Nov 2013	601024 3532	Birth Loan to Death	Jeta
275	M	24 Mar 2001	53	139	NY BRONX	24 Mar 2001 24 Mar 2001	M01022	Birth Death	
276	F	10 May 2001	125	161	OKLAHOMA LOWRY	10 May 2001 8 Jan 2003 31 May 2011	769407 101757 101757	Birth Loan to Ownership	Jamie
277	M	6 Jun 2001	106	143	SD-WAP WARSAW	6 Jun 2001 30 Apr 2004 1 Feb 2005	601332 S6080	Birth Loan to Death	Gyan
278	F	23 Jul 2001	106	209	SD-WAP PATNA	23 Jul 2001 9 May 2007 9 Dec 2014	601408 R-PAT-16	Birth Transfer Death	Gari
279	M	28 Nov 2001	106	244	SD-WAP	28 Nov 2001 24 Feb 2003	601544	Birth Death	Choto
280	F	15 Jul 2001	152	148	MUNICH TERRA NAT	15 Jul 2001 25 Mar 2004	079006 RI002	Birth Loan to	Nisha
281	F	1 Oct 2001	106	99	SD-WAP	1 Oct 2001 1 Oct 2001	601490	Birth Death	
282	M	~ 2001	WILD	WILD	NEPAL TOKYOTAMA	~ 2002 28 Mar 2002	NONE 3799	Capture Transfer	Bikram
283	F	~ 2001	WILD	WILD	NEPAL TOKYOTAMA KANAZAWA	~ 2002 28 Mar 2002 10 Mar 2021	NONE 3800	Capture Transfer Transfer	Narayani
284	F	13 Apr 2002	123	204	STUTTGART TERRA NAT	13 Apr 2002 25 Mar 2004	7916 RI001	Birth Loan to	Shiwa
285	M	25 Sep 2002	188	201	LISBON	25 Sep 2002 25 Sep 2002	8346	Birth Death	
286	F	23 Oct 2002	166	226	BERLIN TP	23 Oct 2002 23 Oct 2002	M02027	Birth Death	
287	M	7 Dec 2002	134	185	ROTTERDAM HILVARENB WARSAW	7 Dec 2002 29 Dec 2004 12 Apr 2005	106592 M02334 S6414	Birth Loan to Loan to	Hugo



					WHIPSDADE	4 Apr 2008	3289	Loan to	
288	F	23 Dec 2002	190	130	SD-WAP RUM CREEK	23 Dec 2002 7 Dec 2009	602549 109091	Birth Transfer	Raji
289	M	~ 1862	WILD	WILD	ASSAM P LONDON RP	~ 1864 25 Jul 1864 6 Dec 1904	NONE 5415	Capture Transfer Death	Jim
290	M	~ 1951	WILD	WILD	ASSAM P ASSAM DELHI	~ 1957 13 Dec 1957 26 Dec 1959 13 Apr 1970	NONE 100001	Capture Transfer Transfer Death	Mohan Sr
291	F	~ 1951	WILD	WILD	WILD ASSAM PARIS ZOO PARIS	~ Jun 1960 29 Jun 1960 25 May 1963 3 Apr 1967	NONE 100003	Capture Transfer Transfer Death	Geeta
292	M	~ Jun 1964	WILD	WILD	KAZIRANGA ASSAM	~ 1964 28 Oct 1964 13 Nov 1964	NONE 1000010	Capture Transfer Death	Kusha
293	F	~ Feb 1968	WILD	WILD	ASSAM P ASSAM	~ 1968 28 Feb 1968 23 Mar 1970	NONE 1000013	Capture Transfer Death	Lakhimi
294	F	~ Mar 1968	WILD	WILD	ASSAM P ASSAM VADODARA MYSORE	~ 1968 1 Aug 1968 13 Apr 1969 19 Jan 1990 3 Aug 2002	NONE 1000015 10	Capture Transfer Transfer Transfer Death	Kalamukhi
295	M	~ Jul 1968	WILD	WILD	ASSAM P ASSAM	~ 1969 23 Jul 1969 23 Mar 1970	NONE 1000017	Capture Transfer Death	Kumar
296	M	~ May 1969	WILD	WILD	ASSAM P ASSAM	~ 1969 26 Jul 1969 27 Nov 1969	NONE 1000018	Capture Transfer Death	Bhisma
297	F	~ Jul 1969	WILD	WILD	ASSAM P ASSAM	~ 1969 20 Jul 1969 24 Jul 1970	NONE 1000016	Capture Transfer Death	Kumari
298	F	~ Jan 1975	WILD	WILD	KAZIRANGA ASSAM	~ Jan 1975 10 Aug 1975 20 Aug 1977	NONE 1000031	Capture Transfer Death	Ajali
299	M	~ Jun 1975	WILD	WILD	KAZIRANGA ASSAM	~ 1975 2 Feb 1976 7 Mar 1976	NONE 1000032	Capture Transfer Death	Ajit
300	M	~ May 1975	WILD	WILD	ASSAM P ASSAM NANDANKAN	~ 1975 2 Jun 1975 4 Apr 1976 22 Apr 1976	NONE	Capture Transfer Transfer Death	Shayam
301	M	~ 1 Nov 1976	WILD	WILD	KAZIRANGA ASSAM	~ Nov 1976 13 Nov 1976 ~ 2010	NONE 1000034	Capture Transfer Death	Sanjay
302	M	~ 1936	WILD	WILD	KAZIRANGA ASSAM	~ 1978 3 Mar 1978 18 Jan 1987	NONE 1000039	Capture Transfer Death	Rajesh
303	M	~ Aug 1978	WILD	WILD	ASSAM P ASSAM	~ 1978 9 Nov 1978 24 Nov 1978	NONE 1000042	Capture Transfer Death	Prabhat
304	F	9 Mar 1979	UNK	216	CHANDIGAR	9 Mar 1979 9 Mar 1979		Birth Death	
305	F	~ Jul 1979	WILD	WILD	ASSAM P ASSAM	~ 1980 20 Jan 1980 18 Jun 1983	NONE 1000044	Capture Transfer Death	Parbati
306	F	13 Nov 1980	215	216	CHANDIGAR DELHI	13 Nov 1980 5 May 1982 2 Jun 1986		Birth Transfer Death	
307	F	~ Jun 1981	WILD	WILD	KAZIRANGA ASSAM	~ 1981 3 Jul 1981 11 Oct 1981	NONE 1000050	Capture Transfer Death	Rupa
308	M	~ 1977	WILD	WILD	ASSAM P	~ 1982	NONE	Capture	Kamal

					ASSAM	6 Feb 1982 7 Feb 1982	1000051	Transfer Death	
309	F	~ Apr 1982	WILD	WILD	ASSAM P ASSAM	~ 1982 2 May 1982 27 Oct 1982	NONE 1000052	Capture Transfer Death	Dalimi
310	M	15 Feb 1983	215	216	CHANDIGAR	15 Feb 1983 2 Mar 1983	_____	Birth Death	
311	F	~ Mar 1983	WILD	WILD	ASSAM P ASSAM	~ 1983 9 Apr 1983 30 Apr 1983	NONE 1000057	Capture Transfer Death	Sabitri
312	M	11 Dec 1984	215	216	CHANDIGAR	11 Dec 1984 21 Dec 1984	_____	Birth Death	
313	F	~ 1985	WILD	WILD	KAZIRANGA ASSAM	~ 1986 27 Feb 1986 28 Feb 1986	NONE 1000058	Capture Transfer Death	Suchila
314	M	~ 1988	WILD	WILD	ASSAM P ASSAM	~ 1988 16 Sep 1988 24 Sep 1988	NONE 1000062	Capture Transfer Death	Babul
315	M	~ Jun 1989	WILD	WILD	KAZIRANGA ASSAM	~ 1989 26 Jul 1989 4 Sep 1989	NONE 1000067	Capture Transfer Death	Dhan
316	M	~ 1 Jun 1989	WILD	WILD	ASSAM P ASSAM	~ 1989 25 Jun 1989 26 Jun 1989	NONE 1000064	Capture Transfer Death	Kanak
317	M	~ Mar 1990	WILD	WILD	ASSAM P ASSAM	1 Apr 1990 7 Apr 1990 22 Apr 1990	NONE 1000068	Capture Transfer Death	Prakash
318	F	~ Apr 1991	WILD	WILD	ASSAM P ASSAM	~ 1991 6 Aug 1991 17 Aug 1991	NONE 1000070	Capture Transfer Death	Manomati
319	F	25 Nov 1994	170	171	ASSAM	25 Nov 1994 25 Nov 1994	1000073	Birth Death	
320	M	~ Feb 1995	WILD	WILD	ASSAM P ASSAM	~ 1995 21 Mar 1995 27 Nov 1995	NONE 1000075	Capture Transfer Death	Hanuman
321	M	~ Mar 1995	WILD	WILD	ASSAM P ASSAM	~ 1995 11 Jul 1995 25 Nov 1995	NONE 1000076	Capture Transfer Death	Ranga
322	M	29 Apr 1996	140	128	KANPUR LUCKNOW	29 Apr 1996 30 Apr 1997 19 May 1997	_____	Birth Transfer Death	Tarun
323	M	~ Aug 1998	WILD	WILD	ASSAM P ASSAM	~ 1998 26 Nov 1998 15 May 2003	NONE 1000077	Capture Transfer Death	Lahoroni
324	F	19 Feb 1991	83	50	METROZOO	19 Feb 1991 20 Feb 1991	91M001	Birth Death	
325	F	14 Jan 2003	190	143	SD-WAP FORTWORTH ALBUSTAN	14 Jan 2003 14 Jan 2003 9 Mar 2013	603016 201565 GIR002	Birth Ownership Transfer	Asha
326	F	10 May 2003	190	244	SD-WAP SYDNEY	10 May 2003 14 Sep 2006 4 Jun 2007	603204 A60349	Birth Loan to Death	Kua
327	M	13 Jun 2003	190	137	SD-WAP FORTWORTH MICANOPY RUM CREEK	13 Jun 2003 13 Jun 2003 29 Apr 2008 15 Nov 2015	603312 201787 000002 115134	Birth Ownership Loan to Loan to	Taro
328	F	22 Jun 2002	140	348	KANPUR	22 Jun 2002	KAN-10	Birth	Manu
329	M	17 Sep 2003	190	209	SD-WAP MICANOPY CALGARY STEVENSVI	17 Sep 2003 29 Apr 2008 4 Oct 2012 16 Jun 2014 26 Sep 2016	603410 _____ 109243 _____	Birth Loan to Ownership Transfer Loan to	Sabari
330	M	10 Nov 2003	202	252	DELHI SD-WAP	10 Nov 2003 12 May 2007	10004 607125	Birth Transfer	Bhramputra

					RUM CREEK	8 Jul 2007	107048	Loan to	
331	M	20 Dec 2003	57	183	NAGOYA	20 Dec 2003	10007	Birth	Sera
332	M	27 Feb 2003	53	131	NY BRONX TORONTO	27 Feb 2003 27 Feb 2003 26 Sep 2006	M03034 39770 39770	Birth Ownership Transfer	Vishnu
333	M	29 Jan 2004	135	195	NURNBERG NYIREGYHA	29 Jan 2004 29 Jun 2006	M02191 M00409	Birth Loan to	Nepal
334	M	16 Feb 2004	125	161	OKLAHOMA	16 Feb 2004 16 Feb 2004	770408	Birth Death	
335	M	29 Feb 2004	132	182	BERLIN TP STUTTGART WARSAW	29 Feb 2004 29 Feb 2004 5 Sep 2006	M02503 8283 S6139	Birth Ownership Loan to	Jacob
336	M	21 Mar 2004	123	204	STUTTGART MADRID Z BEAUVAL	21 Mar 2004 20 Sep 2006 12 Mar 2010	8284 RI4 M0781	Birth Loan to Loan to	Sahib
337	F	10 May 2004	188	201	LISBON	10 May 2004 15 Jul 2004	9020	Birth Death	Margarida
338	M	21 Jul 2004	166	226	BERLIN TP CHESTER	21 Jul 2004 28 Jan 2007 4 Nov 2009	M02728 C07047	Birth Transfer Death	Patna
339	M	31 Jul 2004	152	148	MUNICH STUTTGART NYIREGYHA PLZEN CHESTER	31 Jul 2004 31 Jul 2004 9 Oct 2006 4 Jun 2010 23 Aug 2011	079007 8522 M00663 316402 C11649	Birth Ownership Loan to Loan to Loan to	Beni
340	M	24 Aug 2004	190	99	PEACE RV	24 Aug 2004 29 Aug 2004	104196	Birth Death	
341	F	2 Sep 2004	220	210	BASEL CHESTER MADRID Z	2 Sep 2004 22 Feb 2008 12 Mar 2010 14 Jun 2020	040044 C0837 RI5	Birth Loan to Loan to Death	Batschii
342	F	15 Sep 2004	187	241	BUFFALO LOSANGELE TORONTO	15 Sep 2004 15 Sep 2004 31 Oct 2006	M04045 990974 41170	Birth Ownership Loan to	Ashakiran
343	M	23 Sep 2004	184	113	PLANCKNDL EDINBURGH ROTTERDAM TOUROPARC	23 Sep 2004 8 Jun 2006 3 Jun 2010 1 Oct 2012	184014 M06F10 108120 T12173	Birth Loan to Loan to Loan to	Fanindra
344	F	16 Oct 2004	152	193	MUNICH	16 Oct 2004 16 Oct 2004	079008	Birth Death	
345	M	4 Nov 2004	220	110	BASEL EDINBURGH CHESTER PLZEN	4 Nov 2004 11 Oct 2006 3 Mar 2010 16 Sep 2011	040045 M06J04 C1041 316403	Birth Loan to Loan to Loan to	Baabuu
346	F	26 Dec 2004	53	139	NY BRONX SD-WAP	26 Dec 2004 29 May 2008	M04220 608199	Birth Loan to	Lalita/Alta
347	M	19 Dec 1993	156	155	PATNA DELHI	19 Dec 1993 ~ 2005 1 Sep 2007	R-PAT-6 10002	Birth Transfer Death	Raja
348	F	26 Jun 1994	157	159	PATNA KANPUR	26 Jun 1994 6 Oct 1997 ~ 2012	R-PAT-7 430827	Birth Transfer Death	Rani
349	M	23 Oct 1997	156	159	PATNA	23 Oct 1997 17 Jul 1999	R-PAT-8	Birth Death	Bajrangji
350	M	2 Jul 2000	151	194	DELHI	2 Jul 2000 2 Jul 2000	_____	Birth Death	
351	M	29 Sep 2000	156	159	PATNA SD-WAP	29 Sep 2000 12 May 2007	RPAT9 607123	Birth Transfer	Bhoppu
352	F	4 Jun 2002	173	192	ASSAM	4 Jun 2002	1000079	Birth	Pori
353	F	8 Aug 2002	156	159	PATNA	8 Aug 2002	R-PAT-10	Birth	Akancha/Gour
354	M	18 Aug 2004	190	272	SD-WAP	18 Aug 2004 21 Aug 2004	604308	Birth Death	Damii

355	M	7 Jan 2005	190	130	SD-WAP FORTWORTH SAFARIWIL	7 Jan 2005 7 Jan 2005 12 Sep 2007 18 Nov 2007	605002 203757	Birth Ownership Loan to Death	Ecko
356	F	25 Jan 2005	190	274	SD-WAP	25 Jan 2005 16 May 2011	605015	Birth Death	Jatri
357	M	27 Feb 2005	190	143	SD-WAP FORTWORTH SAN DIEGOZ SD-WAP MICANOPY VA SAFARI	27 Feb 2005 27 Feb 2005 9 Jul 2008 12 Jun 2013 20 Dec 2015 22 Mar 2021	605036 203801 605036 605036 G21056	Birth Ownership Loan to Loan to Loan to Transfer	Soman
358	M	12 May 2005	190	137	SD-WAP	12 May 2005 12 May 2005	605194	Birth Death	
359	F	25 Oct 2005	239	230	WILDS NY BRONX CINCINNAT	25 Oct 2005 25 Oct 2005 16 Dec 2009 4 Apr 2020	105057 M05231 109072	Birth Ownership Loan to Death	Manjula
360	F	27 Nov 2005	166	226	BERLIN TP BEAUVAL	27 Nov 2005 15 Mar 2010	M03092 M0784	Birth Transfer	Saathi
361	F	1 Dec 2005	190	244	SD-WAP	1 Dec 2005 1 Dec 2005	605408	Birth Death	
362	F	3 Dec 2005	190	278	SD-WAP PATNA	3 Dec 2005 9 May 2007	605410 R-PAT-17	Birth Transfer	Lali
363	F	27 Dec 2005	134	185	ROTTERDAM STUTTGART WHIPPSNADE BEWDLEY NURNBERG	27 Dec 2005 27 Dec 2005 3 Nov 2009 29 Jan 2010 17 Sep 2015	107351 8567 4029 RU1 M03925	Birth Ownership Loan to Loan to Loan to	Sofie
364	M	31 May 2003	156	203	PATNA SD-WAP WILDS	31 May 2003 12 May 2007 25 Jun 2007 16 May 2016	RPAT11 607124 107047	Birth Transfer Loan to Death	Rustum
365	M	19 Sep 2004	156	159	PATNA	19 Sep 2004	R-PAT-12	Birth	Ganesh
366	F	24 May 2005	190	209	PEACE RV RUM CREEK	24 May 2005 15 Jan 2007	105051 105051	Birth Transfer	Rani
367	F	~ Jun 2003	WILD	WILD	NEPAL NEPAL PRK VIENNA	???? ~ Mar 2006 11 Mar 2006	NONE M3065	Capture Transfer Transfer	Sundari
368	M	~ Jun 1997	WILD	WILD	NEPAL NEPAL PRK VIENNA	???? ~ Mar 2006 11 Mar 2006	NONE M3066	Capture Transfer Transfer	Jange
369	F	18 Jan 2006	125	161	OKLAHOMA LOSANGELE DUBBO	18 Jan 2006 18 Jan 2006 30 Oct 2008 10 Jul 2009	771909 991152 991152 A90051	Birth Ownership Transfer Transfer	Amala
370	M	24 Feb 2006	190	272	SD-WAP FORTWORTH SAFARIWIL	24 Feb 2006 24 Feb 2006 12 Sep 2007	606033 204504	Birth Ownership Loan to	Khali
371	M	10 Apr 2006	188	201	LISBON	10 Apr 2006 27 Jun 2006	9802	Birth Death	Alok
372	F	29 Sep 2006	190	137	SD-WAP SAN FRAN SD-WAP	29 Sep 2006 29 Sep 2006 3 Dec 2008	606309 106034 606309	Birth Ownership Transfer	Tanaya
373	M	1 Oct 2006	190	143	SD-WAP FORTWORTH SAN DIEGOZ BATONROUG	1 Oct 2006 11 Sep 2007 11 Sep 2008 19 Jun 2015	606307 206684 606307 10856	Birth Ownership Loan to Loan to	Surat
374	F	17 Oct 2006	123	204	STUTTGART WARSAW	17 Oct 2006 26 Jun 2008	8668 S6431	Birth Loan to	Shikari
375	F	16 Nov 2006	222	223	NY BRONX OKLAHOMA	16 Nov 2006 21 May 2009	M06234 774210	Birth Loan to	Niki
376	F	31 Dec 2006	220	257	WHIPPSNADE CHESTER	31 Dec 2006 2 Feb 2012	2636 C1279	Birth Transfer	Asha

377	M	~ 1830	WILD	WILD	KAZIRANGA LONDON RP	~ 1834 20 May 1834 19 Sep 1849	NONE 5413	Capture Transfer Death	
378	F	????	WILD	WILD	KAZIRANGA LONDON RP	~ 1850 17 Jul 1850 14 Dec 1873	NONE 5414	Capture Transfer Death	Miss Bet
379	M	????	WILD	WILD	KAZIRANGA LONDON RP	~ 1886 25 Dec 1886 30 Dec 1911	NONE 5417	Capture Transfer Death	Tom / Moses
380	M	????	WILD	WILD	KAZIRANGA LONDON RP	~ 1906 9 Jun 1906 4 Jan 1924	NONE 5418	Capture Transfer Death	Carlo
381	M	????	WILD	WILD	KAZIRANGA LONDON RP	~ 1912 21 May 1912 2 Nov 1921	NONE 5419	Capture Transfer Death	
382	F	????	WILD	WILD	KAZIRANGA LONDON RP	~ 1922 7 Apr 1922 27 Apr 1926	NONE 5420	Capture Transfer Death	
383	M	????	WILD	WILD	NEPAL LONDON RP	~ 1924 12 Dec 1924 21 Nov 1941	NONE 5421	Capture Transfer Death	Felix
384	M	~ 1932	WILD	WILD	NEPAL LONDON RP WHIPSSNADE	~ 1932 29 Apr 1933 6 Jun 1935 15 Mar 1945	NONE 5422 2385	Capture Loan to Loan to Death	Hush
385	F	~ 1930	WILD	WILD	NEPAL LONDON RP WHIPSSNADE	~ 1930 3 Jul 1933 6 Jun 1935 18 Nov 1938	NONE 5423 2386	Capture Loan to Loan to Death	Hash
386	M	6 Nov 2005	156	203	PATNA HYDERABAD	6 Nov 2005 24 Aug 2011	R-PAT-14 20139	Birth Transfer	Suraj
387	F	24 Jan 2007	156	159	PATNA HYDERABAD	24 Jan 2007 24 Aug 2011	R-PAT-15 20138	Birth Transfer	Sarswati
388	F	21 Aug 2007	132	144	BERLINZOO	21 Aug 2007 21 Aug 2007	_____	Birth Death	
389	M	2 Oct 2007	UNK	274	MONTGOMRY SD-WAP RUM CREEK SAFARIWIL	2 Oct 2007 2 Oct 2007 13 Nov 2008 25 Feb 2009 16 Mar 2017	3583 607370 108110 _____	Birth Ownership Loan to Loan to Death	Java
390	M	30 Oct 2007	202	278	PATNA	30 Oct 2007	R-PAT-18	Birth	Shaktiraj
391	M	8 May 2007	190	288	SD-WAP	8 May 2007 8 May 2007	607107	Birth Death	
392	F	1 Feb 2007	117	266	KANAZAWA	1 Feb 2007 22 Mar 2007	_____	Birth Death	Asuka
393	M	5 Nov 2007	220	256	WHIPSSNADE BEWDLEY	5 Nov 2007 29 Jan 2010	3197 RU2	Birth Loan to	Rap
394	M	5 Jan 2007	222	131	NY BRONX OMAHA YULEE MONTGOMRY	5 Jan 2007 29 Apr 2011 22 Oct 2015 19 Jan 2021	M07009 20705 154312 4273	Birth Loan to Loan to Transfer	FITZGERALD
395	F	28 Oct 2007	239	230	WILDS OMAHA	28 Oct 2007 9 Apr 2012	107071 21444	Birth Loan to	HELLARY
396	F	1 Nov 2007	239	264	WILDS TORONTO DENVER	1 Nov 2007 1 Nov 2007 22 Nov 2011	107072 42288 A11302	Birth Ownership Loan to	Tensing
398	M	~ 1970	WILD	WILD	KAZIRANGA ASSAM KOLKATA	~ 1970 12 Feb 1974 11 Mar 1974 13 Jan 2003	NONE 1000026 _____	Capture Transfer Transfer Death	Bihua
399	M	~ Mar 1976	WILD	WILD	KAZIRANGA ASSAM	~ Mar 1976 6 Apr 1976 22 Apr 1976	NONE 1000033	Capture Transfer Death	Nakul

400	M	~ 1976	WILD	WILD	KAZIRANGA ASSAM	~ 1976 17 Oct 1976 ~ 2010	NONE 1000037	Capture Transfer Death	Balaram
401	F	~ 1971	WILD	WILD	KAZIRANGA ASSAM PUNJAB PK	~ 1971 15 Jun 1978 29 Jul 1978	NONE 1000041	Capture Transfer lft	Sakuntala
402	F	~ Apr 1991	WILD	WILD	KAZIRANGA ASSAM	~ Apr 1991 4 Aug 1991 19 Sep 1991	NONE 1000072	Capture Transfer Death	Joymati
403	F	~ Jun 1988	WILD	WILD	WILD KATHMANDU	~ 1988 22 Jul 1988 ~ 2014	NONE 1	Capture Transfer Death	Kanchhi
404	M	~ May 1991	WILD	WILD	NEPAL PRIVATE KATHMANDU	~ 1991 ~ 1991 5 Nov 1993	NONE 2	Capture Transfer Transfer	Kancha
405	F	5 Jan 2008	239	189	CINCINNAT	5 Jan 2008 5 Jan 2008	108000	Birth Death	
406	M	25 Jan 2008	190	244	SD-WAP FORTWORTH OMAHA	25 Jan 2008 25 Jan 2008 4 May 2011	608013 205233 20710	Birth Ownership Loan to	Jontu
407	F	28 Feb 2008	184	113	PLANCKNDL SD-WAP NYIREGYHA	28 Feb 2008 28 Feb 2008 11 Sep 2010	184015 M00949	Birth Ownership Loan to	Jasmin
408	F	1 Mar 2008	187	241	BUFFALO ROCKTON	1 Mar 2008 23 Feb 2012	B2RU02	Birth Loan to	Clover Hasel
409	F	27 Apr 2008	166	226	BERLIN TP PLZEN	27 Apr 2008 1 Jun 2010	M03246 316401	Birth Transfer	Manjula
410	F	8 Jul 2008	190	143	SD-WAP FORTWORTH RUM CREEK	8 Jul 2008 8 Jul 2008 9 Jun 2015	608248 207754 115083	Birth Ownership Transfer	Kaya
411	M	13 Jul 2008	134	185	ROTTERDAM STUTTGART EDINBURGH BATUSECRE	13 Jul 2008 31 Jul 2008 31 May 2010 18 May 2018	107778 9691 M10F01 M2011	Birth Ownership Loan to Loan to	Bertus
412	M	11 Aug 2008	123	204	STUTTGART EDINBURGH BAYRAMOGL	11 Aug 2008 4 May 2010 26 Nov 2015	8908 M10E02 M01445	Birth Loan to Loan to	Samir
413	F	11 Nov 2008	190	137	SD-WAP	11 Nov 2008 1 Nov 2013	608340	Birth Death	Sundari
414	M	6 Oct 2008	53	139	NY BRONX NZP-WASH BUFFALO YULEE	6 Oct 2008 6 Oct 2008 13 Oct 2012 3 Jun 2021	M08133 114385 M12055 UND	Birth Ownership Transfer Transfer	George
415	M	24 Dec 2008	190	288	SD-WAP	24 Dec 2008 8 Jan 2010	608375	Birth Death	Ramir
416	F	17 Mar 2009	188	201	LISBON	17 Mar 2009 17 Mar 2009	10700	Birth Death	
417	M	18 May 2009	351	356	SD-WAP DENVER	18 May 2009 26 Nov 2011	609174 A11305	Birth Loan to	Bandhu
418	F	7 Jul 2009	254	276	LOWRY TANGAN WP	7 Jul 2009 9 Jul 2011 25 Jun 2017	102735 A09203	Birth Loan to Death	Clara
419	F	27 Aug 2009	145	195	NURNBERG BEWDLEY	27 Aug 2009 16 Sep 2015	M02977 1502	Birth Loan to	Seto Paitala
420	M	~ 2000	WILD	WILD	INDIA KANPUR HYDERABAD VISAKAPAT	~ Jan 2005 1 Dec 2005 ~ 2013 ~ 2013	NONE KZP1	Capture Transfer Transfer lft	Nakul
421	F	10 Nov 2005	202	252	DELHI	10 Nov 2005	10005	Birth	ANJUHA
422	M	28 Mar 2006	160	348	KANPUR	28 Mar 2006	KZP-11	Birth	mangal
423	M	17 Sep 2007	UNK	272	DELHI	17 Sep 2007 17 Sep 2007	10008	Birth Death	

424	F	~ 1862	WILD	WILD	WILD LONDON RP PARIS JP	~ 1864 25 Jul 1864 20 Jun 1865	NONE 5416	Capture Transfer ltf	
425	M	~ 1906	WILD	WILD	NEPAL HAMBURG NY BRONX	~ 1906 ~ 1907 23 Jul 1907 27 Aug 1918	NONE 711290	Capture Transfer Transfer Death	
426	F	~ 1920	WILD	WILD	WILD BUCK W NY BRONX	~ 1920 ~ May 1923 24 May 1923 25 Jan 1962	NONE 231288	Capture Transfer Transfer Death	
427	M	~ 1977	WILD	WILD	INDIA ASSAM MYSORE	~ 1978 24 Jan 1980 1 Jun 1985 ~ Jun 2013	NONE 100045 850011	Capture Transfer Transfer Death	Raju
428	M	17 Jan 2010	166	182	BERLIN TP WROCLAW TERRA NAT	17 Jan 2010 17 Sep 2012 16 Oct 2018 24 Feb 2019	M04479 212291 RI005	Birth Transfer Transfer Death	TARUN
429	M	1 Feb 2010	265	229	LISIEUX Z WROCLAW	1 Feb 2010 6 Nov 2012	M10002 212318	Birth Loan to	MANAS
430	F	8 May 2010	273	271	METROZOO	8 May 2010 8 May 2010	10M050	Birth Death	
431	F	14 Jul 2010	220	210	BASEL	14 Jul 2010 14 Jul 2010	100046	Birth Death	
432	F	23 Jul 2010	220	110	BASEL BEAUVAL	23 Jul 2010 30 Oct 2013	100047 M01494	Birth Loan to	HENNA
433	M	16 Oct 2010	351	325	SD-WAP	16 Oct 2010 16 Oct 2010	610362	Birth Death	
434	M	26 Oct 2010	53	189	CINCINNAT	26 Oct 2010 26 Oct 2010	110085	Birth Death	
435	F	16 Nov 2010	287	256	WHIPNADE PLANCKNDL	16 Nov 2010 21 Dec 2012	4281 184016	Birth Transfer	KARAMAT
436	F	17 Oct 2010	351	143	RUM CREEK	17 Oct 2010	110065	Birth	AUTUMN
437	M	29 Oct 2010	351	288	RUM CREEK TANGAN WP	29 Oct 2010 22 Nov 2016	110067 A16572	Birth Transfer	STACKS
438	M	31 Aug 2010	287	257	WHIPNADE GUERNO	31 Aug 2010 2 Mar 2015 1 Nov 2020	4256 MRU10001	Birth Transfer Death	AJANG
440	M	~ Apr 1978	WILD	WILD	ASSAM P ASSAM UTTAR PRA	~ Apr 1978 24 Apr 1978 17 Oct 1979	NONE 1000040	Capture Transfer ltf	KRISHNA JR
441	F	6 Apr 2009	156	159	PATNA	6 Apr 2009	R-PAT-19	Birth	ELECTION
442	M	~20 May 1990	WILD	WILD	KAZIRANGA ASSAM TRIVANDRU	~20 May 1990 20 Aug 1990 14 Sep 1994	NONE 1000069 NONE	Capture Transfer ltf	PRADIP
443	F	13 Nov 1992	UNK	UNK	FERNDAL MORELIA	13 Nov 1992 28 Sep 2006	RIN001	Birth ltf	
444	M	13 Nov 1992	UNK	UNK	FERNDAL MORELIA	13 Nov 1992 28 Sep 2006	RIN002	Birth ltf	
445	M	15 Aug 2009	117	266	KANAZAWA NAGOYA	15 Aug 2009 7 Nov 2011	05 11109	Birth Loan to	BUNTA
446	M	11 Nov 2008	347	252	DELHI	11 Nov 2008 28 Apr 2012	10006	Birth Death	Raja Junior
449	M	25 May 2011	156	159	PATNA MYSORE	25 May 2011 20 Jul 2014	R-PAT-20 M01123	Birth Transfer	VIRAT
450	M	2 Jun 2011	69	244	YULEE SANFORD	2 Jun 2011 14 May 2013	114015 11H144	Birth Loan to	PJ
451	M	13 Jul 2011	254	276	LOWRY SANFORD WILDS RUM CREEK	13 Jul 2011 12 Mar 2013 7 Jun 2017 16 Apr 2021	102936 11H143 117032	Birth Loan to Loan to Transfer	JAHI

452	F	31 Jul 2011	166	226	BERLIN TP NYIREGYHA	31 Jul 2011 23 Oct 2014	M04896 M13103	Birth Loan to	ARUNA
453	M	8 Sep 2011	69	238	YULEE	8 Sep 2011 8 Sep 2011	114030	Birth Death	
454	M	16 Oct 2011	UNK	UNK	PATNA	16 Oct 2011 ~ 2012		Birth Death	
455	F	19 Nov 2011	255	269	AMERSFOOR STUTTGAART BEWDLEY	19 Nov 2011 19 Nov 2011 3 Dec 2013	M4182 9616 1306	Birth Ownership Transfer	SUNANDA
456	M	11 Nov 2011	202	203	PATNA	11 Nov 2011	R-PAT-22	Birth	Jambo
457	F	29 Dec 2011	273	271	METROZOO BATONROUG	29 Dec 2011 17 Jun 2014	11M131 10752	Birth Loan to	Anala
458	F	18 Mar 2011	332	342	TORONTO	18 Mar 2011 18 Mar 2011	44838	Birth Death	
459	M	5 Jan 2013	351	410	SD-WAP	5 Jan 2013 5 Jan 2013	613002	Birth Death	
460	F	20 Jan 2012	351	346	SD-WAP NY BRONX METROZOO	20 Jan 2012 20 Jan 2012 14 Dec 2015	612018 M12065 15M090	Birth Ownership Loan to	CHARLEES
461	M	8 Feb 2012	134	284	TERRA NAT FOTA	8 Feb 2012 26 Nov 2015	RI004 4931	Birth Loan to	SUSHTO
462	F	3 Mar 2012	330	209	RUM CREEK	3 Mar 2012	112051	Birth	
463	M	15 Mar 2012	351	325	SD-WAP	15 Mar 2012 15 Mar 2012	612059	Birth Death	
464	F	16 Aug 2012	190	137	FORTWORTH SD-WAP	16 Aug 2012 4 Apr 2015	207594 615094	Birth Loan to	ASHA II
465	F	17 Aug 2012	330	366	RUM CREEK	17 Aug 2012 19 Aug 2012	112133	Birth Death	
466	M	10 Sep 2012	220	210	BASEL LA TESTE	10 Sep 2012 4 Nov 2015	120048 M15013	Birth Transfer	JARI
467	M	16 Sep 2012	351	372	SD-WAP	16 Sep 2012 21 Sep 2012	612355	Birth Death	
468	M	22 Sep 2012	152	193	MUNICH	22 Sep 2012 25 Sep 2012	079009	Birth Death	
469	M	14 Oct 2012	364	264	WILDS TORONTO SANDIEGOZ	14 Oct 2012 14 Oct 2012 11 Dec 2015 16 Mar 2018	112083 46359 515170	Birth Ownership Loan to Death	
470	F	3 Nov 2012	343	185	ROTTERDAM GUERNO FOTA	3 Nov 2012 13 Apr 2015 23 Jan 2020	Z12389 MRU12002 5637	Birth Transfer Transfer	MAYA
471	F	13 Dec 2012	351	413	SD-WAP YULEE	13 Dec 2012 27 Jan 2017	612425 174301	Birth Loan to	SHOMILI
472	M	25 Dec 2012	335	374	WARSAW STUTTGAART LA TESTE	25 Dec 2012 25 Dec 2012 2 Oct 2014	S6946 9757 RU1014	Birth Ownership Loan to	BYS
473	M	12 Dec 2012	287	257	WHIPNADE FOTA	12 Dec 2012 23 Jun 2015	4993 4780	Birth Transfer	JAMIL
474	F	20 Dec 2012	330	143	RUM CREEK	20 Dec 2012 28 Aug 2014	112197	Birth Death	HOPE
476	F	13 Jan 2013	265	229	LISIEUX Z	13 Jan 2013 6 Feb 2015	M13001	Birth Death	RANGA
477	F	6 Apr 2013	222	223	NY BRONX WILDS	6 Apr 2013 15 Apr 2021	M13045 121024	Birth Transfer	ANNA
478	M	9 May 2013	254	276	LOWRY SANDIEGOZ	9 May 2013 5 Mar 2016 2 Jan 2019	103087 516018	Birth Loan to Death	JIYU
479	F	11 May 2013	156	159	PATNA MYSORE	11 May 2013 20 Jul 2014	R-PAT-23 M01124	Birth Transfer	DOLLY



480	M	5 May 2013	160	328	KANPUR	5 May 2013		Birth	Pawan
481	F	7 Jul 2013	339	376	CHESTER BAYRAMOGL	7 Jul 2013 8 Nov 2016	C13475 M01463	Birth Transfer	KOMALA
482	M	21 Sep 2013	173	192	ASSAM	21 Sep 2013	1000080	Birth	81-Sanatan
483	M	6 Sep 2013	202	278	PATNA	6 Sep 2013	R-PAT-24	Birth	Vidhut
484	M	5 Jun 2013	239	274	MONTGOMRY	5 Jun 2013 18 Oct 2013	3938	Birth Death	ZUUL
485	F	27 Sep 2013	364	230	WILDS NY BRONX	27 Sep 2013 31 May 2018	113071 M13195	Birth Transfer	PRIYA
486	M	5 Oct 2013	220	110	BASEL LA TESTE	5 Oct 2013 4 Nov 2015	130049 M15024	Birth Transfer	KIRAN
487	M	13 Oct 2013	351	325	ALBUSTAN SINGAPORE	13 Oct 2013 2 Nov 2020	GIR003 G18140	Birth Loan to	THULIE
488	M	27 Oct 2013	69	244	YULEE	27 Oct 2013	134054	Birth	Auggie
489	F	7 Nov 2013	336	360	BEAUVAL TOUROPARC	7 Nov 2013 4 Oct 2016	M01502 T16095	Birth Transfer	SALYAN
491	F	~ Oct 1982	WILD	WILD	WILD ASSAM	~ Oct 1982 26 Sep 2013 ~ 2014	NONE 1000081	Capture Transfer Death	Rani
493	F	16 Sep 2013	202	159	PATNA	16 Sep 2013 9 Aug 2015	R-PAT-25	Birth Death	
494	F	9 May 2013	69	238	YULEE NZP-WASH	9 May 2013 9 May 2013	134028 115143	Birth Ownership	Samba
495	F	10 Jun 2011	202	353	PATNA	10 Jun 2011 10 Jun 2011	R-PAT-21	Birth Death	
496	M	31 Jan 2014	117	266	KANAZAWA MITO CHO	31 Jan 2014 14 Mar 2016	06 01	Birth Loan to	CHAMP
497	M	25 Feb 2014	351	346	SD-WAP FORTWORTH	25 Feb 2014 4 Mar 2021	614063 212689	Birth Transfer	PARVESH
498	F	2 Feb 2014	345	409	PLZEN TOUROPARC WROCLAW	2 Feb 2014 26 Apr 2016 2 Apr 2019	316404 T16049	Birth Loan to Loan to	MARUSKA
499	F	5 Jun 2014	147	241	BUFFALO LOSANGELE SD-WAP TANGAN WP	5 Jun 2014 5 Jun 2014 9 Nov 2016 10 Oct 2018	M14025 993316 616578 A18785	Birth Ownership Loan to Transfer	MONICA
500	M	21 Jun 2014	125	375	OKLAHOMA EVANSVILLE	21 Jun 2014 26 Nov 2017	774511 117017	Birth Transfer	RUPERT
501	F	1 Aug 2014	351	372	SD-WAP RUM CREEK	1 Aug 2014 16 May 2017	614395	Birth Transfer	PETUNIA
502	M	31 Aug 2014	364	264	WILDS SD-WAP TOLEDO	31 Aug 2014 31 Aug 2014 17 May 2018	114073 614487 13285	Birth Ownership Transfer	
503	M	23 Oct 2014	335	374	WARSAW STUTTGART LA FLECHE	23 Oct 2014 23 Oct 2014 4 Apr 2017	S7177 9965 2418	Birth Ownership Loan to	BYS II
504	F	27 Oct 2014	123	204	STUTTGART LISBON	27 Oct 2014 21 Oct 2016	9960 12297	Birth Loan to	SAVITA
505	M	27 Nov 2014	351	410	SD-WAP FORTWORTH FRESNO	27 Nov 2014 27 Nov 2014 25 Sep 2017	614524 208878 208068	Birth Ownership Loan to	Chuti
506	?	~ Jan 2014	WILD	WILD	JALDAPARA KOLKATA	~ 1 Oct 2014 ~10 Oct 2014	NONE	Capture lft	
507	M	3 Nov 2012	145	195	NURNBERG	3 Nov 2012 3 Nov 2012	M03501	Birth Death	
508	M	2 Apr 1974	WILD	WILD	INDIA NANDANKAN	~ Apr 1974 2 Dec 1979 29 Sep 2016	NONE NANDAN	Capture Transfer Death	Nandan

509	M	~ Jan 1977	WILD	WILD	INDIA NANDANKAN	~ Jan 1977 2 Dec 1979 28 Sep 2016	NONE RHINO-1	Capture Transfer Death	
510	M	31 Aug 2015	152	193	MUNICH AMERSFOOR	31 Aug 2015 15 Dec 2017	079010 M5221	Birth Loan to	PURI
511	M	6 Sep 2015	287	257	WHIPNADE LA FLECHE	6 Sep 2015 27 Apr 2017	6256 2426	Birth Transfer	BALI
512	M	12 Sep 2015	166	226	BERLIN TP AMERSFOOR	12 Sep 2015 15 Dec 2017	M05994 M5222	Birth Transfer	THANOS
513	M	17 Feb 2016	332	342	TORONTO LOSANGELE STEVENSVI	17 Feb 2016 18 Mar 2016 5 Jun 2019	48712 UNK	Birth Ownership Transfer	NANDU
514	F	24 Feb 2016	351	346	SD-WAP	24 Feb 2016	616044	Birth	ANANDI
515	F	28 Nov 2015	69	238	YULEE	28 Nov 2015	154052	Birth	Peaches
516	F	4 Feb 2014	330	209	RUM CREEK	4 Feb 2014	114011	Birth	
517	M	18 Jul 2015	330	143	RUM CREEK SD-WAP FRESNO SAN DIEGOZ	18 Jul 2015 12 May 2017 27 Sep 2017 4 Mar 2021	115096 617290 208069 617290	Birth Transfer Loan to Transfer	CAPONE
518	M	30 Oct 2015	364	230	RUM CREEK	30 Oct 2015	115115	Birth	Scooter
519	F	2 Mar 2016	330	209	RUM CREEK	2 Mar 2016 1 Jul 2016	116022	Birth Death	
520	M	25 Oct 2015	263	369	DUBBO	25 Oct 2015 23 Sep 2017	B50147	Birth Death	
521	F	~ Jan 2009	WILD	WILD	KATHMANDU	24 Dec 2011 13 Jun 2016	2M3	Transfer Death	Narayani
522	M	~ 1 Nov 2011	WILD	WILD	CHITWAN KATHMANDU	~ 1 Nov 2011 12 Jul 2013	NONE 2M4	Capture Transfer	Biru
523	M	~ 1 Oct 2013	WILD	WILD	CHITWAN KATHMANDU	~ 1 Oct 2013 15 Nov 2014	NONE 2M5	Capture Transfer	Bange
524	M	12 Dec 2015	184	435	PLANCKNDL EDINBURGH	12 Dec 2015 26 Jul 2018	184017 M18G04	Birth Transfer	Qabid
527	M	9 Sep 2016	336	432	BEAUVAL STUTTGART EUROPA	9 Sep 2016 9 Sep 2016 3 Jul 2019	M02063 10138	Birth Ownership Transfer	Gainda
528	M	19 Sep 2016	132	182	BERLINZOO	19 Sep 2016 19 Sep 2016	M1600123	Birth Death	
529	F	22 Oct 2016	265	229	LISIEUX Z GUERNO	22 Oct 2016 3 Jun 2020	M16138	Birth Transfer	Sundara
530	M	10 Nov 2016	351	372	SD-WAP SEATTLE	10 Nov 2016 4 Apr 2018	616577 UNK	Birth Transfer	Taj
531	F	28 Nov 2016	69	244	YULEE NY BRONX	28 Nov 2016 28 Nov 2016	164084 M16218	Birth Ownership	Frankie
532	M	7 Jan 2017	220	210	BASEL	7 Jan 2017	170051	Birth	Orys
533	F	14 Feb 2017	184	185	ROTTERDAM	14 Feb 2017	Z17106	Birth	Karuna
534	M	1 Mar 2017	145	363	NURNBERG EDINBURGH	1 Mar 2017 18 Mar 2019	M04053 M19C02	Birth Transfer	Sanjay
535	M	31 Mar 2017	333	407	NYIREGYHA	31 Mar 2017 31 Mar 2017	M13352	Birth Death	
536	M	8 Jun 2017	202	441	PATNA	8 Jun 2017	R-PAT-27	Birth	Shakti
537	F	26 Jul 2017	365	362	PATNA MADRAS	26 Jul 2017 1 Sep 2019	R-PAT-28 UNO	Birth lft	
538	M	5 Jul 2012	386	387	HYDERABAD	5 Jul 2012	500063	Birth	Saivijay
539	M	25 Sep 2015	386	387	HYDERABAD PATNA	25 Sep 2015 31 Oct 2017	500064 UNK	Birth Transfer	Ramu
540	M	4 Sep 2015	160	328	KANPUR	4 Sep 2015		Birth	Krishna

541	M	12 Jul 2016	249	325	ALBUSTAN SINGAPORE	12 Jul 2016 2 Nov 2020	GIR004 G18141	Birth Loan to	Newari
542	M	11 Nov 2016	364	264	WILDS SEATTLE	11 Nov 2016 24 Apr 2018	116053 206623	Birth Transfer	Glenn
544	F	14 Mar 2014	330	288	RUM CREEK	14 Mar 2014 14 Mar 2014	114027	Birth Death	
545	M	28 Nov 2016	330	288	RUM CREEK COLUMBUS	28 Nov 2016 8 Apr 2021	116129 221012	Birth Transfer	
546	F	29 Mar 2017	330	366	RUM CREEK	29 Mar 2017 30 Mar 2017	117027	Birth Death	
547	M	15 Aug 2017	327	436	RUM CREEK	15 Aug 2017 15 Aug 2017	117093	Birth Death	
548	F	5 Feb 2017	345	409	PLZEN BASEL	5 Feb 2017 11 Sep 2019	316405 190052	Birth Transfer	Shakti
552	M	~ Mar 2016	UNK	UNK	UNKNOWN ASSAM	~ Mar 2016 8 Oct 2017	_____	Birth Transfer	Gaonburha
553	F	~ Mar 2016	UNK	UNK	UNKNOWN ASSAM MYSORE	~ Mar 2016 13 Oct 2017 13 Dec 2019	_____	Birth Transfer Transfer	Bagori
554	F	~ Jan 2016	UNK	UNK	UNKNOWN ASSAM	~ Jan 2016 17 Oct 2017 13 Jan 2018	_____	Birth Transfer Death	Shanti
555	M	4 Jan 2018	332	342	TORONTO	4 Jan 2018	50000	Birth	Kiran
556	F	16 Jan 2018	336	360	BEAUVAIL MADRID Z	16 Jan 2018 1 Dec 2020	M02297	Birth Transfer	Sananda
557	M	10 Mar 2018	351	346	SD-WAP	10 Mar 2018 10 Mar 2018	618077	Birth Death	
558	M	16 Mar 2018	335	374	WARSAW	16 Mar 2018 3 Jun 2020	S7482	Birth Death	Yang
559	M	3 May 2018	339	376	CHESTER SZEGED	3 May 2018 13 Oct 2020	C18418 UND	Birth Transfer	Akemo
560	M	26 Mar 2018	394	238	YULEE	26 Mar 2018 19 Aug 2020	184019	Birth Death	Mowgli
561	F	22 Jun 2018	351	464	SD-WAP	22 Jun 2018	618244	Birth	Carole
562	M	9 Jul 2018	351	372	SD-WAP HEMKER GF	9 Jul 2018 14 Sep 2020	618270 754	Birth Transfer	Tio
563	M	26 Sep 2018	333	407	NYIREGYHA SZEGED	26 Sep 2018 17 Aug 2020	M13601 4349	Birth Transfer	Csölk
564	F	4 Jul 2018	188	201	LISBON	4 Jul 2018 4 Jul 2018	12535	Birth Death	
565	F	3 Nov 2017	202	159	PATNA	3 Nov 2017 5 Nov 2017	R-PAT29	Birth Death	
566	M	15 Feb 2014	202	362	PATNA	15 Feb 2014 19 Feb 2014	R-PAT26	Birth Death	
567	M	5 Jun 2018	166	226	BERLIN TP BERLINZOO	5 Jun 2018 27 Sep 2019	0004058	Birth Transfer	Karl
568	F	21 Dec 2018	394	471	YULEE	21 Dec 2018	184073	Birth	Khali
569	F	14 Feb 2019	393	419	BEWDLEY	14 Feb 2019 14 Feb 2019	1826	Birth Death	
570	F	23 Apr 2019	273	460	METROZOO	23 Apr 2019	19M050	Birth	Sarita
571	M	17 Jun 2019	273	241	BUFFALO	17 Jun 2019	M19003	Birth	Mohan
572	F	30 Jul 2019	351	346	SD-WAP	30 Jul 2019	4000844	Birth	Anusha
573	F	24 Aug 2019	451	264	WILDS	24 Aug 2019	119057	Birth	Rohini
574	F	28 Aug 2019	336	432	BEAUVAIL	28 Aug 2019	M02739	Birth	Anjali
575	F	2 Sep 2019	134	284	TERRA NAT	2 Sep 2019	RI006	Birth	Duna

576	M	30 Aug 2019	406	395	OMAHA	30 Aug 2019	25949	Birth	Marshall
577	F	8 Dec 2019	287	257	WHIPSDNADE	8 Dec 2019	8066	Birth	Zhiwa
578	M	~ 3 Jul 2006	WILD	WILD	ASSAM	~ 3 Jul 2006 3 Jul 2016	000R7 000R7	Birth Transfer	Nagshankar
579	M	26 Mar 2020	351	464	SD-WAP	26 Mar 2020	4001668	Birth	Arjun
580	F	11 Apr 2020	351	372	SD-WAP	11 Apr 2020	4001824	Birth	Lulu
581	M	8 Sep 2020	393	419	BEWDLEY	8 Sep 2020	1895	Birth	Inesh
582	F	9 Jul 2020	184	435	PLANCKNDL	9 Jul 2020	184018	Birth	Vaiana
583	M	12 Sep 2020	180	276	LOWRY	12 Sep 2020	103530	Birth	Gronk
584	F	23 Oct 2020	190	375	OKLAHOMA	23 Oct 2020	774914	Birth	Yabi
588	M	16 Jun 2020	202	203	PATNA	16 Jun 2020	R-PAT32	Birth	
589	F	9 May 2020	202	353	PATNA	9 May 2020	R-PAT31	Birth	
590	F	3 Nov 2017	202	159	PATNA	3 Nov 2017	R-PAT29	Birth	
592	F	6 Jul 1991	157	155	PATNA KANPUR	6 Jul 1991 27 Apr 1997 21 Mar 2008	CHUTKI CHUTKI	Birth Transfer Death	
594	F	9 Jan 1978	24	25	ASSAM	9 Jan 1978 11 Jan 2011	38-GEETA	Birth Death	Lakgeeta/Gee
595	F	4 Aug 1973	WILD	WILD	INDIA KANPUR LUCKNOW	1 Apr 1974 4 Mar 1977 4 Apr 1997	UNK UNK UNK	Capture Transfer lft	Mayangkumari
596	M	~16 Mar 1960	WILD	WILD	INDIA DELHI	15 Jul 1960 27 Nov 1965 5 Jul 1998	UNK UNK	Capture Transfer Death	Mohan Junior
597	F	~21 Jan 1974	WILD	WILD	ASSAM PATNA RANCHI	22 Jul 1974 25 May 1979 4 Dec 1996 ~ 1 Oct 2008	UNK UNK UNK	Capture Transfer Transfer Death	
599	F	~ 7 Jun 1972	WILD	WILD	INDIA ASSAM NANDANKAN	22 Jun 1972 30 Jun 1972 8 Jun 1974 28 May 2007	UNK UNK 4001	Capture Transfer Transfer Death	
600	F	~16 Jul 2016	WILD	WILD	INDIA ASSAM	17 May 2017 12 Oct 2017	UNK 000R6	Capture Transfer	Shanti
603	M	9 May 1986	215	216	CHANDIGAR CHHAT BIR	9 May 1986 9 May 1986	UND UNK	Birth Ownership	Raja/Prince
605	M	~ 1 Jul 1976	WILD	WILD	INDIA ASSAM	11 Jan 1980 27 Jan 1980 16 Jun 2013	UNK UNK	Capture Transfer Death	
606	F	5 Jun 2010	605	192	ASSAM MYSORE	5 Jun 2010 6 Sep 2013	UNK UNK	Birth Transfer	

=====

TOTALS: 318.260.2 (580)

## 8 Appendix II – Current Studbook Population

### ALBUSTAN

Stud#	Sex	Birth Date	Sire	Dam	Location	Date	LocalID	Event	Name
249	M	23 Nov 1997	106	209	SD-WAP	23 Nov 1997	697600	Birth	Giirja
					PEACE RV	2 Jun 2000	100069	Loan to	
					MICANOPY	27 Jan 2007		Loan to	
					ALBUSTAN	12 Mar 2013	GIR001	Transfer	
325	F	14 Jan 2003	190	143	SD-WAP	14 Jan 2003	603016	Birth	Asha
					FORTWORTH	14 Jan 2003	201565	Ownership	
					ALBUSTAN	9 Mar 2013	GIR002	Transfer	

Totals: 1.1.0 (2)

### AMERSFOOR

Stud#	Sex	Birth Date	Sire	Dam	Location	Date	LocalID	Event	Name
510	M	31 Aug 2015	152	193	MUNICH	31 Aug 2015	079010	Birth	PURI
					AMERSFOOR	15 Dec 2017	M5221	Loan to	
512	M	12 Sep 2015	166	226	BERLIN TP	12 Sep 2015	M05994	Birth	THANOS
					AMERSFOOR	15 Dec 2017	M5222	Transfer	

Totals: 2.0.0 (2)

### ASSAM

Stud#	Sex	Birth Date	Sire	Dam	Location	Date	LocalID	Event	Name
192	F	~ Jun 1990	WILD	WILD	KAZIRANGA	~ Jun 1990	NONE	Capture	Baghekhati
					ASSAM	10 Aug 1991	1000071	Transfer	
352	F	4 Jun 2002	173	192	ASSAM	4 Jun 2002	1000079	Birth	Pori
482	M	21 Sep 2013	173	192	ASSAM	21 Sep 2013	1000080	Birth	81-Sanatan
552	M	~ Mar 2016	UNK	UNK	UNKNOWN	~ Mar 2016		Birth	Gaonburha
					ASSAM	8 Oct 2017	000R4	Transfer	
578	M	~ 3 Jul 2006	WILD	WILD	ASSAM	~ 3 Jul 2006	000R7	Birth	Nagshankar
						3 Jul 2016	000R7	Transfer	
600	F	~16 Jul 2016	WILD	WILD	INDIA	17 May 2017	UNK	Capture	Shanti
					ASSAM	12 Oct 2017	000R6	Transfer	

Totals: 3.3.0 (6)

### BASEL

Stud#	Sex	Birth Date	Sire	Dam	Location	Date	LocalID	Event	Name
210	F	10 Oct 1993	100	110	BASEL	10 Oct 1993	930042	Birth	Quetta
220	M	18 Mar 1994	106	130	SD-WAP	18 Mar 1994	694115	Birth	Jaffna
					BASEL	29 Mar 1996	694115	Transfer	
					WHIPNADE	9 Jun 2004	897	Loan to	
					BASEL	27 Feb 2008	694115	Transfer	
532	M	7 Jan 2017	220	210	BASEL	7 Jan 2017	170051	Birth	Orys
548	F	5 Feb 2017	345	409	PLZEN	5 Feb 2017	316405	Birth	Shakti
					BASEL	11 Sep 2019	190052	Transfer	

Totals: 2.2.0 (4)

### BATONROUG

Stud#	Sex	Birth Date	Sire	Dam	Location	Date	LocalID	Event	Name
373	M	1 Oct 2006	190	143	SD-WAP	1 Oct 2006	606307	Birth	Surat
					FORTWORTH	11 Sep 2007	206684	Ownership	
					SANDIEGOZ	11 Sep 2008	606307	Loan to	
					BATONROUG	19 Jun 2015	10856	Loan to	

457	F	29 Dec 2011	273	271	METROZOO	29 Dec 2011	11M131	Birth	Anala
					BATONROUG	17 Jun 2014	10752	Loan to	

Totals: 1.1.0 (2)

#### BATUSECRE

Stud#	Sex	Birth Date	Sire	Dam	Location	Date	LocalID	Event	Name
411	M	13 Jul 2008	134	185	ROTTERDAM	13 Jul 2008	107778	Birth	Bertus
					STUTTGART	31 Jul 2008	9691	Ownership	
					EDINBURGH	31 May 2010	M10F01	Loan to	
					BATUSECRE	18 May 2018	M2011	Loan to	

Totals: 1.0.0 (1)

#### BAYRAMOGL

Stud#	Sex	Birth Date	Sire	Dam	Location	Date	LocalID	Event	Name
412	M	11 Aug 2008	123	204	STUTTGART	11 Aug 2008	8908	Birth	Samir
					EDINBURGH	4 May 2010	M10E02	Loan to	
					BAYRAMOGL	26 Nov 2015	M01445	Loan to	
481	F	7 Jul 2013	339	376	CHESTER	7 Jul 2013	C13475	Birth	KOMALA
					BAYRAMOGL	8 Nov 2016	M01463	Transfer	

Totals: 1.1.0 (2)

#### BEAUVAL

Stud#	Sex	Birth Date	Sire	Dam	Location	Date	LocalID	Event	Name
336	M	21 Mar 2004	123	204	STUTTGART	21 Mar 2004	8284	Birth	Sahib
					MADRID Z	20 Sep 2006	RI4	Loan to	
					BEAUVAL	12 Mar 2010	M0781	Loan to	
360	F	27 Nov 2005	166	226	BERLIN TP	27 Nov 2005	M03092	Birth	Saathi
					BEAUVAL	15 Mar 2010	M0784	Transfer	
432	F	23 Jul 2010	220	110	BASEL	23 Jul 2010	100047	Birth	HENNA
					BEAUVAL	30 Oct 2013	M01494	Loan to	
574	F	28 Aug 2019	336	432	BEAUVAL	28 Aug 2019	M02739	Birth	Anjali

Totals: 1.3.0 (4)

#### BEIJING

Stud#	Sex	Birth Date	Sire	Dam	Location	Date	LocalID	Event	Name
141	M	4 Nov 1987	86	93	DVURKRALV	4 Nov 1987	057004	Birth	Nim
					LIBEREC	9 Nov 1989	629001	Transfer	
					BEIJING	20 Dec 2001		Transfer	

Totals: 1.0.0 (1)

#### BERLINZOO

Stud#	Sex	Birth Date	Sire	Dam	Location	Date	LocalID	Event	Name
226	F	21 Jan 1995	106	182	BERLIN TP	21 Jan 1995	M00122	Birth	Betty
					BERLINZOO	27 Sep 2019		Transfer	

567	M	5 Jun 2018	166	226	BERLIN TP BERLINZOO	5 Jun 2018 27 Sep 2019	0004058	Birth Transfer	Karl
-----	---	------------	-----	-----	------------------------	---------------------------	---------	-------------------	------

Totals: 1.1.0 (2)

## BEWDLEY

Stud#	Sex	Birth Date	Sire	Dam	Location	Date	LocalID	Event	Name
393	M	5 Nov 2007	220	256	WHIPPSNADE BEWDLEY	5 Nov 2007 29 Jan 2010	3197 RU2	Birth Loan to	Rap
419	F	27 Aug 2009	145	195	NURNBERG BEWDLEY	27 Aug 2009 16 Sep 2015	M02977 1502	Birth Loan to	Seto Paitala
455	F	19 Nov 2011	255	269	AMERSFOOR STUTTGART BEWDLEY	19 Nov 2011 19 Nov 2011 3 Dec 2013	M4182 9616 1306	Birth Ownership Transfer	SUNANDA
581	M	8 Sep 2020	393	419	BEWDLEY	8 Sep 2020	1895	Birth	Inesh

Totals: 2.2.0 (4)

## BUFFALO

Stud#	Sex	Birth Date	Sire	Dam	Location	Date	LocalID	Event	Name
241	F	6 Dec 1996	125	161	OKLAHOMA LOSANGELE OKLAHOMA BUFFALO	6 Dec 1996 6 Dec 1996 6 Dec 1996 6 Nov 1998	701406 005099 701406 98M146	Birth Ownership Loan to Loan to	Tashi
414	M	6 Oct 2008	53	139	NY BRONX NZP-WASH BUFFALO YULEE	6 Oct 2008 6 Oct 2008 13 Oct 2012 3 Jun 2021	M08133 114385 M12055 UND	Birth Ownership Transfer Transfer	George
571	M	17 Jun 2019	273	241	BUFFALO	17 Jun 2019	M19003	Birth	Mohan

Totals: 2.1.0 (3)

## CARSON

Stud#	Sex	Birth Date	Sire	Dam	Location	Date	LocalID	Event	Name
106	M	15 May 1981	76	77	HYDERABAD SD-WAP SAN DIEGOZ SD-WAP FORTWORTH TANGAN WP CARSON	15 May 1981 10 Sep 1983 30 Nov 1983 29 May 1985 16 May 2001 3 Jul 2008 18 Nov 2016	 783639 783639 783639 200677 A81202  	Birth Transfer Transfer Transfer Loan to Loan to Transfer	Rabha

Totals: 1.0.0 (1)

## CHANDIGAR

Stud#	Sex	Birth Date	Sire	Dam	Location	Date	LocalID	Event	Name
603	M	9 May 1986	215	216	CHANDIGAR CHHAT BIR	9 May 1986 9 May 1986	UND UNK	Birth Ownership	Raja/Prince

Totals: 1.0.0 (1)

## CHESTER

Stud#	Sex	Birth Date	Sire	Dam	Location	Date	LocalID	Event	Name
339	M	31 Jul 2004	152	148	MUNICH STUTTGART	31 Jul 2004 31 Jul 2004	079007 8522	Birth Ownership	Beni

						NYIREGYHA	9 Oct 2006	M00663	Loan to	
						PLZEN	4 Jun 2010	316402	Loan to	
						CHESTER	23 Aug 2011	C11649	Loan to	
376	F	31 Dec 2006	220	257	WHIPSSNADE	31 Dec 2006	2636	Birth	Asha	
					CHESTER	2 Feb 2012	C1279	Transfer		

Totals: 1.1.0 (2)

## CHHAT BIR

Stud#	Sex	Birth Date	Sire	Dam	Location	Date	LocalID	Event	Name
603	M	9 May 1986	215	216	CHANDIGAR	9 May 1986	UND	Birth	Raja/Prince
					CHHAT BIR	9 May 1986	UNK	Ownership	

Totals: 1.0.0 (1)

## CHIANGMAI

Stud#	Sex	Birth Date	Sire	Dam	Location	Date	LocalID	Event	Name
243	F	~ 1984	WILD	WILD	CHITWAN	~ Jul 1984	NONE	Capture	KARI
					CHIANGMAI	22 Apr 1986	M08035	Transfer	

Totals: 0.1.0 (1)

## DELHI

Stud#	Sex	Birth Date	Sire	Dam	Location	Date	LocalID	Event	Name
252	F	27 Nov 1997	151	194	DELHI	27 Nov 1997	10003	Birth	Maheshwari
421	F	10 Nov 2005	202	252	DELHI	10 Nov 2005	10005	Birth	ANJUHA

Totals: 0.2.0 (2)

## DENVER

Stud#	Sex	Birth Date	Sire	Dam	Location	Date	LocalID	Event	Name
396	F	1 Nov 2007	239	264	WILDS	1 Nov 2007	107072	Birth	Tensing
					TORONTO	1 Nov 2007	42288	Ownership	
					DENVER	22 Nov 2011	A11302	Loan to	
417	M	18 May 2009	351	356	SD-WAP	18 May 2009	609174	Birth	Bandhu
					DENVER	26 Nov 2011	A11305	Loan to	

Totals: 1.1.0 (2)

## DUBBO

Stud#	Sex	Birth Date	Sire	Dam	Location	Date	LocalID	Event	Name
263	M	14 Aug 1999	57	183	NAGOYA	14 Aug 1999	10334	Birth	Dora
					SYDNEY	29 Oct 2001	A10433	Transfer	
					DUBBO	1 May 2003	A30069	Transfer	
369	F	18 Jan 2006	125	161	OKLAHOMA	18 Jan 2006	771909	Birth	Amala
					LOSANGELE	18 Jan 2006	991152	Ownership	
						30 Oct 2008	991152	Transfer	
					DUBBO	10 Jul 2009	A90051	Transfer	

Totals: 1.1.0 (2)

## EDINBURGH

Stud#	Sex	Birth Date	Sire	Dam	Location	Date	LocalID	Event	Name
-------	-----	------------	------	-----	----------	------	---------	-------	------



524	M	12 Dec 2015	184	435	PLANCKNDL EDINBURGH	12 Dec 2015 26 Jul 2018	184017 M18G04	Birth Transfer	Qabid
534	M	1 Mar 2017	145	363	NURNBERG EDINBURGH	1 Mar 2017 18 Mar 2019	M04053 M19C02	Birth Transfer	Sanjay

Totals: 2.0.0 (2)

## EUROPA

Stud#	Sex	Birth Date	Sire	Dam	Location	Date	LocalID	Event	Name
144	F	~ 1987	WILD	WILD	NEPAL	~ 1987	NONE	Capture	Narayani
					BERLINZOO	15 May 1988	880090	Transfer	
					BERLIN TP	3 Jun 2002	M02026	Loan to	
					BERLINZOO	3 Sep 2003	880090	Transfer	
					EUROPA	1 Jul 2019		Loan to	
182	F	20 Jul 1990	106	130	SD-WAP	20 Jul 1990	690458	Birth	Jhansi
					BERLIN TP	10 Oct 1994	M00121	Loan to	
					STUTTGART	10 Oct 1994	5628	Ownership	
					BERLINZOO	3 Jun 2002	M9000001	Loan to	
					BERLIN TP	3 Sep 2003	M00121	Loan to	
					BERLINZOO	26 Jul 2005	M9000001	Loan to	
					BERLIN TP	23 May 2006	M00121	Loan to	
					BERLINZOO	14 Jun 2007	M9000001	Loan to	
					BERLIN TP	18 Jul 2008	M00121	Loan to	
					BERLINZOO	26 Sep 2012	M9000001	Loan to	
					EUROPA	1 Jul 2019		Loan to	
527	M	9 Sep 2016	336	432	BEAUVAL	9 Sep 2016	M02063	Birth	Gainda
					STUTTGART	9 Sep 2016	10138	Ownership	
					EUROPA	3 Jul 2019		Transfer	

Totals: 1.2.0 (3)

## EVANSVILLE

Stud#	Sex	Birth Date	Sire	Dam	Location	Date	LocalID	Event	Name
138	F	~ 1986	WILD	WILD	CHITWAN	????	NONE	Capture	Mechi
					NZP-WASH	27 May 1987	107663	Transfer	
					PHILADELP	10 May 1994	102924	Loan to	
					NZP-WASH	20 Oct 1994	107663	Transfer	
					YULEE	3 Jun 2003	Y34303	Loan to	
					EVANSVILLE	11 Nov 2009	109014	Loan to	
500	M	21 Jun 2014	125	375	OKLAHOMA	21 Jun 2014	774511	Birth	RUPERT
					EVANSVILLE	26 Nov 2017	117017	Transfer	

Totals: 1.1.0 (2)

## FOTA

Stud#	Sex	Birth Date	Sire	Dam	Location	Date	LocalID	Event	Name
461	M	8 Feb 2012	134	284	TERRA NAT	8 Feb 2012	RI004	Birth	SUSHTO
					FOTA	26 Nov 2015	4931	Loan to	
470	F	3 Nov 2012	343	185	ROTTERDAM	3 Nov 2012	Z12389	Birth	MAYA
					GUERNO	13 Apr 2015	MRU12002	Transfer	
					FOTA	23 Jan 2020	5637	Transfer	
473	M	12 Dec 2012	287	257	WHIPNADE	12 Dec 2012	4993	Birth	JAMIL
					FOTA	23 Jun 2015	4780	Transfer	

Totals: 2.1.0 (3)

## FRESNO

Stud#	Sex	Birth Date	Sire	Dam	Location	Date	LocalID	Event	Name
505	M	27 Nov 2014	351	410	SD-WAP	27 Nov 2014	614524	Birth	Chuti

					FORTWORTH	27 Nov 2014	208878	Ownership	
					FRESNO	25 Sep 2017	208068	Loan to	
517	M	18 Jul 2015	330	143	RUM CREEK	18 Jul 2015	115096	Birth	CAPONE
					SD-WAP	12 May 2017	617290	Transfer	
					FRESNO	27 Sep 2017	208069	Loan to	
					SANDIEGOZ	4 Mar 2021	617290	Transfer	

Totals: 2.0.0 (2)

## GUERNO

Stud#	Sex	Birth Date	Sire	Dam	Location	Date	LocalID	Event	Name
269	F	12 Feb 2000	123	204	STUTTGART	12 Feb 2000	7561	Birth	Saar
					MADRID Z	30 Jan 2002	RI2	Loan to	
					AMERSFOOR	22 Oct 2004	M3060	Loan to	
					BASEL	21 Mar 2016	160050	Loan to	
					GUERNO	14 Nov 2017		Loan to	
529	F	22 Oct 2016	265	229	LISIEUX Z	22 Oct 2016	M16138	Birth	Sundara
					GUERNO	3 Jun 2020		Transfer	

Totals: 0.2.0 (2)

## HEMKER GF

Stud#	Sex	Birth Date	Sire	Dam	Location	Date	LocalID	Event	Name
562	M	9 Jul 2018	351	372	SD-WAP	9 Jul 2018	618270	Birth	Tio
					HEMKER GF	14 Sep 2020	754	Transfer	

Totals: 1.0.0 (1)

## HYDERABAD

Stud#	Sex	Birth Date	Sire	Dam	Location	Date	LocalID	Event	Name
386	M	6 Nov 2005	156	203	PATNA	6 Nov 2005	R-PAT-14	Birth	Suraj
					HYDERABAD	24 Aug 2011	20139	Transfer	
387	F	24 Jan 2007	156	159	PATNA	24 Jan 2007	R-PAT-15	Birth	Sarswati
					HYDERABAD	24 Aug 2011	20138	Transfer	
538	M	5 Jul 2012	386	387	HYDERABAD	5 Jul 2012	500063	Birth	Saivijay

Totals: 2.1.0 (3)

## KANAZAWA

Stud#	Sex	Birth Date	Sire	Dam	Location	Date	LocalID	Event	Name
117	M	12 Jul 1983	41	34	STUTTGART	12 Jul 1983	3126	Birth	Kintaro
					MAGDEBURG	24 Oct 1984	399001	Transfer	
					KANAZAWA	27 Aug 1985	01	Transfer	

Totals: 1.0.0 (1)

## KANPUR

Stud#	Sex	Birth Date	Sire	Dam	Location	Date	LocalID	Event	Name
328	F	22 Jun 2002	140	348	KANPUR	22 Jun 2002	KAN-10	Birth	Manu
422	M	28 Mar 2006	160	348	KANPUR	28 Mar 2006	KZP-11	Birth	mangal
480	M	5 May 2013	160	328	KANPUR	5 May 2013		Birth	Pawan
540	M	4 Sep 2015	160	328	KANPUR	4 Sep 2015		Birth	Krishna

Totals: 3.1.0 (4)

## KATHMANDU

Stud#	Sex	Birth Date	Sire	Dam	Location	Date	LocalID	Event	Name
404	M	~ May 1991	WILD	WILD	NEPAL PRIVATE KATHMANDU	~ 1991 ~ 1991 5 Nov 1993	NONE 2	Capture Transfer	Kancha
522	M	~ 1 Nov 2011	WILD	WILD	CHITWAN KATHMANDU	~ 1 Nov 2011 12 Jul 2013	NONE 2M4	Capture Transfer	Biru
523	M	~ 1 Oct 2013	WILD	WILD	CHITWAN KATHMANDU	~ 1 Oct 2013 15 Nov 2014	NONE 2M5	Capture Transfer	Bange

Totals: 3.0.0 (3)

## LA FLECHE

Stud#	Sex	Birth Date	Sire	Dam	Location	Date	LocalID	Event	Name
503	M	23 Oct 2014	335	374	WARSAW STUTTGART LA FLECHE	23 Oct 2014 23 Oct 2014 4 Apr 2017	S7177 9965 2418	Birth Ownership Loan to	BYS II
511	M	6 Sep 2015	287	257	WHIPNADE LA FLECHE	6 Sep 2015 27 Apr 2017	6256 2426	Birth Transfer	BALI

Totals: 2.0.0 (2)

## LA TESTE

Stud#	Sex	Birth Date	Sire	Dam	Location	Date	LocalID	Event	Name
466	M	10 Sep 2012	220	210	BASEL LA TESTE	10 Sep 2012 4 Nov 2015	120048 M15013	Birth Transfer	JARI
472	M	25 Dec 2012	335	374	WARSAW STUTTGART LA TESTE	25 Dec 2012 25 Dec 2012 2 Oct 2014	S6946 9757 RU1014	Birth Ownership Loan to	BYS
486	M	5 Oct 2013	220	110	BASEL LA TESTE	5 Oct 2013 4 Nov 2015	130049 M15024	Birth Transfer	KIRAN

Totals: 3.0.0 (3)

## LISBON

Stud#	Sex	Birth Date	Sire	Dam	Location	Date	LocalID	Event	Name
188	M	22 Dec 1991	106	143	SD-WAP LISBON	22 Dec 1991 25 Oct 1996	691776 5497	Birth Loan to	Gangtok
201	F	15 Nov 1992	115	55	PLANCKNDL WHIPNADE LISBON	15 Nov 1992 21 Nov 1992 24 Nov 1996 1 Jan 2002	184008 L2961 5532 5532	Birth Transfer Loan to Transfer	Teja
245	F	13 Sep 1997	145	93	DVURKRALV LISBON	13 Sep 1997 16 Mar 2009	057006 10718	Birth Loan to	Nova
504	F	27 Oct 2014	123	204	STUTTGART LISBON	27 Oct 2014 21 Oct 2016	9960 12297	Birth Loan to	SAVITA

Totals: 1.3.0 (4)

## LISIEUX Z

Stud#	Sex	Birth Date	Sire	Dam	Location	Date	LocalID	Event	Name
229	F	12 Oct 1995	115	113	PLANCKNDL	12 Oct 1995	184010	Birth	Winona

					LISIEUX Z	26 Apr 2000	M00057	Loan to	
265	M	8 Oct 1999	135	195	NURNBERG	8 Oct 1999	M01560	Birth	Albrecht
					LISIEUX Z	26 Sep 2001	M01088	Loan to	
						22 Nov 2012	M01088	Ownership	

Totals: 1.1.0 (2)

## LOWRY

Stud#	Sex	Birth Date	Sire	Dam	Location	Date	LocalID	Event	Name
180	M	27 Jan 1990	26	29	SD-WAP	27 Jan 1990	690037	Birth	Juanpur
					ROLLING H	6 Apr 1995	950030	Loan to	
					BATONROUG	14 Nov 1996	7914	Loan to	
						19 Jun 1997	7914	Transfer	
					METROZOO	1 Oct 2003	Y3M035	Loan to	
					LOWRY	1 Apr 2014	103162	Loan to	
276	F	10 May 2001	125	161	OKLAHOMA	10 May 2001	769407	Birth	Jamie
					LOWRY	8 Jan 2003	101757	Loan to	
						31 May 2011	101757	Ownership	
583	M	12 Sep 2020	180	276	LOWRY	12 Sep 2020	103530	Birth	Gronk

Totals: 2.1.0 (3)

## LUCKNOW

Stud#	Sex	Birth Date	Sire	Dam	Location	Date	LocalID	Event	Name
129	M	6 Dec 1984	70	128	KANPUR	6 Dec 1984	0305	Birth	Lohit
					LUCKNOW	6 Apr 1995	063	Transfer	

Totals: 1.0.0 (1)

## MADRID Z

Stud#	Sex	Birth Date	Sire	Dam	Location	Date	LocalID	Event	Name
270	M	4 Jul 2000	134	185	ROTTERDAM	4 Jul 2000	106133	Birth	Daan
					STUTTGART	4 Jul 2000	7629	Ownership	
					AMERSFOOR	13 Sep 2002	M2515	Loan to	
					MADRID Z	21 Oct 2004	RI3	Loan to	
556	F	16 Jan 2018	336	360	BEAUVAL	16 Jan 2018	M02297	Birth	Sananda
					MADRID Z	1 Dec 2020		Transfer	

Totals: 1.1.0 (2)

## METROZOO

Stud#	Sex	Birth Date	Sire	Dam	Location	Date	LocalID	Event	Name
273	M	31 Dec 2000	106	137	SD-WAP	31 Dec 2000	600657	Birth	Suru
					SAN FRAN	31 Dec 2000	100052	Ownership	
					SD-WAP	31 Dec 2000	600657	Loan to	
					METROZOO	19 Oct 2003	Y3M062	Loan to	
					WILDS	12 Apr 2021	121021	Transfer	
460	F	20 Jan 2012	351	346	SD-WAP	20 Jan 2012	612018	Birth	CHARLEES
					NY BRONX	20 Jan 2012	M12065	Ownership	
					METROZOO	14 Dec 2015	15M090	Loan to	
570	F	23 Apr 2019	273	460	METROZOO	23 Apr 2019	19M050	Birth	Sarita

Totals: 1.2.0 (3)

## MICANOPI

Stud#	Sex	Birth Date	Sire	Dam	Location	Date	LocalID	Event	Name
-------	-----	------------	------	-----	----------	------	---------	-------	------

271	F	22 Dec 2000	53	131	NY BRONX METROZOO MICANOPY NY BRONX	22 Dec 2000 10 Jun 2004 24 Nov 2015 1 Jun 2021	M00167 M40022 <u>          </u> M00167	Birth Loan to Loan to Transfer	Kalu
357	M	27 Feb 2005	190	143	SD-WAP FORTWORTH SAN DIEGOZ SD-WAP MICANOPY VA SAFARI	27 Feb 2005 27 Feb 2005 9 Jul 2008 12 Jun 2013 20 Dec 2015 22 Mar 2021	605036 203801 605036 605036 <u>          </u> G21056	Birth Ownership Loan to Loan to Loan to Transfer	Soman

Totals: 1.1.0 (2)

## MITO CHO

Stud#	Sex	Birth Date	Sire	Dam	Location	Date	LocalID	Event	Name
496	M	31 Jan 2014	117	266	KANAZAWA MITO CHO	31 Jan 2014 14 Mar 2016	06 01	Birth Loan to	CHAMP

Totals: 1.0.0 (1)

## MUNICH

Stud#	Sex	Birth Date	Sire	Dam	Location	Date	LocalID	Event	Name
152	M	27 Nov 1988	41	34	STUTTGART MUNICH	27 Nov 1988 12 Jun 1990	3869 079003	Birth Loan to	Nikolaus
193	F	~ 1989	WILD	WILD	NEPAL MUNICH	~ 1989 15 Apr 1990	NONE 079001	Capture Transfer	Rapti

Totals: 1.1.0 (2)

## MYSORE

Stud#	Sex	Birth Date	Sire	Dam	Location	Date	LocalID	Event	Name
449	M	25 May 2011	156	159	PATNA MYSORE	25 May 2011 20 Jul 2014	R-PAT-20 M01123	Birth Transfer	VIRAT
479	F	11 May 2013	156	159	PATNA MYSORE	11 May 2013 20 Jul 2014	R-PAT-23 M01124	Birth Transfer	DOLLY
553	F	~ Mar 2016	UNK	UNK	UNKNOWN ASSAM MYSORE	~ Mar 2016 13 Oct 2017 13 Dec 2019	<u>          </u> 000R5 M01555	Birth Transfer Transfer	Bagori
606	F	5 Jun 2010	605	192	ASSAM MYSORE	5 Jun 2010 6 Sep 2013	UNK UNK	Birth Transfer	

Totals: 1.3.0 (4)

## NAGOYA

Stud#	Sex	Birth Date	Sire	Dam	Location	Date	LocalID	Event	Name
183	F	23 Oct 1990	100	56	BASEL NAGOYA	23 Oct 1990 30 Nov 1991	910039 10006	Birth Transfer	Nilgiri
331	M	20 Dec 2003	57	183	NAGOYA	20 Dec 2003	10007	Birth	Sera
445	M	15 Aug 2009	117	266	KANAZAWA NAGOYA	15 Aug 2009 7 Nov 2011	05 11109	Birth Loan to	BUNTA

Totals: 2.1.0 (3)

## NURNBERG

Stud#	Sex	Birth Date	Sire	Dam	Location	Date	LocalID	Event	Name
-------	-----	------------	------	-----	----------	------	---------	-------	------

Zoo Basel

International Studbook Greater One-horned or Indian Rhinoceros

166	M	1 Jan 1990	42	40	BERLIN TP	1 Jan 1990	M00119	Birth	Belur
					BERLINZOO	21 Jun 1993	930236	Loan to	
					BERLIN TP	10 Jun 1997	M00119	Transfer	
					BERLINZOO	27 Sep 2019	930236	Transfer	
					NURNBERG	~10 Oct 2019		Transfer	
363	F	27 Dec 2005	134	185	ROTTERDAM	27 Dec 2005	107351	Birth	Sofie
					STUTTGART	27 Dec 2005	8567	Ownership	
					WHIPNADE	3 Nov 2009	4029	Loan to	
					BEWDLEY	29 Jan 2010	RU1	Loan to	
					NURNBERG	17 Sep 2015	M03925	Loan to	
Totals: 1.1.0 (2)									

NY BRONX

Stud#	Sex	Birth Date	Sire	Dam	Location	Date	LocalID	Event	Name
139	F	~ 1986	WILD	WILD	CHITWAN	????	NONE	Capture	Kali
					NZP-WASH	27 May 1987	107664	Transfer	
					NY BRONX	23 Apr 1998	981044	Loan to	
222	M	11 Sep 1994	69	79	TORONTO	11 Sep 1994	30105	Birth	Sanjay
					NZP-WASH	11 Sep 1994	112251	Ownership	
					PHILADELP	26 Jan 1998	103525	Ownership	
					TORONTO	26 Jan 1998	30105	Loan to	
					PHILADELP	28 Aug 1998	103525	Transfer	
					NY BRONX	30 Sep 2004	M04180	Transfer	
223	F	5 Oct 1994	10	80	PHILADELP	5 Oct 1994	103011	Birth	Penny
					NY BRONX	2 Jul 2001	M01136	Loan to	
						30 Sep 2004	M01136	Transfer	
477	F	6 Apr 2013	222	223	NY BRONX	6 Apr 2013	M13045	Birth	ANNA
					WILDS	15 Apr 2021	121024	Transfer	
485	F	27 Sep 2013	364	230	WILDS	27 Sep 2013	113071	Birth	PRIYA
					NY BRONX	31 May 2018	M13195	Transfer	
531	F	28 Nov 2016	69	244	YULEE	28 Nov 2016	164084	Birth	Frankie
					NY BRONX	28 Nov 2016	M16218	Ownership	
Totals: 1.5.0 (6)									

NYIREGYHA

Stud#	Sex	Birth Date	Sire	Dam	Location	Date	LocalID	Event	Name
333	M	29 Jan 2004	135	195	NURNBERG	29 Jan 2004	M02191	Birth	Nepal
					NYIREGYHA	29 Jun 2006	M00409	Loan to	
407	F	28 Feb 2008	184	113	PLANCKNDL	28 Feb 2008	184015	Birth	Jasmin
					SD-WAP	28 Feb 2008		Ownership	
					NYIREGYHA	11 Sep 2010	M00949	Loan to	
452	F	31 Jul 2011	166	226	BERLIN TP	31 Jul 2011	M04896	Birth	ARUNA
					NYIREGYHA	23 Oct 2014	M13103	Loan to	
Totals: 1.2.0 (3)									

NZP-WASH

Stud#	Sex	Birth Date	Sire	Dam	Location	Date	LocalID	Event	Name
494	F	9 May 2013	69	238	YULEE	9 May 2013	134028	Birth	Samba
					NZP-WASH	9 May 2013	115143	Ownership	
Totals: 0.1.0 (1)									

OKLAHOMA

Stud#	Sex	Birth Date	Sire	Dam	Location	Date	LocalID	Event	Name
-------	-----	------------	------	-----	----------	------	---------	-------	------

## Zoo Basel

## International Studbook Greater One-horned or Indian Rhinoceros

125	M	11 Aug 1985	35	46	LOSANGELE OKLAHOMA	11 Aug 1985 15 Nov 1990	002213 542705	Birth Loan to	Chandra
137	F	~ 1986	WILD	WILD	CHITWAN SAN FRAN SD-WAP FORTWORTH OKLAHOMA	???? 26 May 1987 27 Nov 1996 9 Mar 2010 20 Feb 2019	NONE 187049 696602 206258 774813	Capture Transfer Loan to Loan to Loan to	Shanti
375	F	16 Nov 2006	222	223	NY BRONX OKLAHOMA	16 Nov 2006 21 May 2009	M06234 774210	Birth Loan to	Niki
584	F	23 Oct 2020	190	375	OKLAHOMA	23 Oct 2020	774914	Birth	Yabi

Totals: 1.3.0 (4)

## OMAHA

Stud#	Sex	Birth Date	Sire	Dam	Location	Date	LocalID	Event	Name
395	F	28 Oct 2007	239	230	WILDS OMAHA	28 Oct 2007 9 Apr 2012	107071 21444	Birth Loan to	HELLARY
406	M	25 Jan 2008	190	244	SD-WAP FORTWORTH OMAHA	25 Jan 2008 25 Jan 2008 4 May 2011	608013 205233 20710	Birth Ownership Loan to	Jontu
576	M	30 Aug 2019	406	395	OMAHA	30 Aug 2019	25949	Birth	Marshall

Totals: 2.1.0 (3)

## PATNA

Stud#	Sex	Birth Date	Sire	Dam	Location	Date	LocalID	Event	Name
159	F	8 Jul 1988	157	155	PATNA	8 Jul 1988	R-PAT-4	Birth	Hartali
202	M	27 Dec 1992	151	194	DELHI PATNA	27 Dec 1992 21 Oct 2005	10001 R-PAT-13	Birth Transfer	Ayodhya
353	F	8 Aug 2002	156	159	PATNA	8 Aug 2002	R-PAT-10	Birth	Akancha/Gour
362	F	3 Dec 2005	190	278	SD-WAP PATNA	3 Dec 2005 9 May 2007	605410 R-PAT-17	Birth Transfer	Lali
365	M	19 Sep 2004	156	159	PATNA	19 Sep 2004	R-PAT-12	Birth	Ganesh
390	M	30 Oct 2007	202	278	PATNA	30 Oct 2007	R-PAT-18	Birth	Shaktiraj
441	F	6 Apr 2009	156	159	PATNA	6 Apr 2009	R-PAT-19	Birth	ELECTION
456	M	11 Nov 2011	202	203	PATNA	11 Nov 2011	R-PAT-22	Birth	Jambo
483	M	6 Sep 2013	202	278	PATNA	6 Sep 2013	R-PAT-24	Birth	Vidhut
536	M	8 Jun 2017	202	441	PATNA	8 Jun 2017	R-PAT-27	Birth	Shakti
539	M	25 Sep 2015	386	387	HYDERABAD PATNA	25 Sep 2015 31 Oct 2017	500064 UNK	Birth Transfer	Ramu
588	M	16 Jun 2020	202	203	PATNA	16 Jun 2020	R-PAT32	Birth	
589	F	9 May 2020	202	353	PATNA	9 May 2020	R-PAT31	Birth	
590	F	3 Nov 2017	202	159	PATNA	3 Nov 2017	R-PAT29	Birth	

Totals: 8.6.0 (14)

## PLANCKNDL

Stud#	Sex	Birth Date	Sire	Dam	Location	Date	LocalID	Event	Name
184	M	28 Dec 1990	106	99	SD-WAP LISBON LISIEUX Z PLANCKNDL ROTTERDAM	28 Dec 1990 25 Oct 1996 11 Dec 1999 20 Aug 2001 30 Apr 2015	690732 5496 M99100 184013 Z1582	Birth Loan to Loan to Loan to Loan to	Gujurat/Gujr

					PLANCKNDL	10 Jun 2016	184013	Loan to	
435	F	16 Nov 2010	287	256	WHIPNADE	16 Nov 2010	4281	Birth	KARAMAT
					PLANCKNDL	21 Dec 2012	184016	Transfer	
582	F	9 Jul 2020	184	435	PLANCKNDL	9 Jul 2020	184018	Birth	Vaiana

Totals: 1.2.0 (3)

## PLZEN

Stud#	Sex	Birth Date	Sire	Dam	Location	Date	LocalID	Event	Name
345	M	4 Nov 2004	220	110	BASEL	4 Nov 2004	040045	Birth	Baabuu
					EDINBURGH	11 Oct 2006	M06J04	Loan to	
					CHESTER	3 Mar 2010	C1041	Loan to	
					PLZEN	16 Sep 2011	316403	Loan to	
409	F	27 Apr 2008	166	226	BERLIN TP	27 Apr 2008	M03246	Birth	Manjula
					PLZEN	1 Jun 2010	316401	Transfer	

Totals: 1.1.0 (2)

## QINGYUAN

Stud#	Sex	Birth Date	Sire	Dam	Location	Date	LocalID	Event	Name
T2	M	~ Jun 2017	WILD	WILD	NEPAL	~ Dec 2017	NONE	Capture	Badhra
					QINGYUAN	~ Jun 2018		Transfer	
T3	F	~ Jun 2016	WILD	WILD	NEPAL	~ Dec 2017	NONE	Capture	Rupasi
					QINGYUAN	30 Jun 2018		Transfer	
262	M	27 Jul 1999	106	130	SD-WAP	27 Jul 1999	699439	Birth	Ivan
					LANGLEY	20 Jun 2002	H02017	Loan to	
					ROCKTON	~ Jun 2011		Loan to	
					QINGYUAN	17 Apr 2014	BORU01	Transfer	

Totals: 2.1.0 (3)

## ROCKTON

Stud#	Sex	Birth Date	Sire	Dam	Location	Date	LocalID	Event	Name
254	M	27 Jul 1998	53	131	NY BRONX	27 Jul 1998	981132	Birth	Arjun
					TORONTO	27 Jul 1998	33979	Ownership	
					LOWRY	13 Jun 2001	101460	Loan to	
					ROCKTON	28 Feb 2014	B4RU03	Transfer	
408	F	1 Mar 2008	187	241	BUFFALO	1 Mar 2008		Birth	Clover Hasel
					ROCKTON	23 Feb 2012	B2RU02	Loan to	

Totals: 1.1.0 (2)

## ROLLING H

Stud#	Sex	Birth Date	Sire	Dam	Location	Date	LocalID	Event	Name
146	M	22 May 1988	26	29	SD-WAP	22 May 1988	688293	Birth	Joya
					SANDIEGOZ	13 Sep 1990	688293	Transfer	
					ROLLING H	6 Apr 1995	950029	Loan to	
						9 Jun 2021		Death	

Totals: 1.0.0 (1)

## ROTTERDAM

Stud#	Sex	Birth Date	Sire	Dam	Location	Date	LocalID	Event	Name
185	F	11 Feb 1991	41	34	STUTTGART	11 Feb 1991	4449	Birth	Namaste
					ROTTERDAM	16 Jun 1993	104724	Loan to	



## Zoo Basel

## International Studbook Greater One-horned or Indian Rhinoceros

533 F 14 Feb 2017 184 185 ROTTERDAM 14 Feb 2017 Z17106 Birth Karuna

Totals: 0.2.0 (2)

## RUM CREEK

Stud#	Sex	Birth Date	Sire	Dam	Location	Date	LocalID	Event	Name
143	F	28 May 1987	26	99	SD-WAP RUM CREEK	28 May 1987 7 Dec 2009	687346 109090	Birth Transfer	Goalpara
209	F	7 Sep 1993	26	143	SD-WAP PEACE RV RUM CREEK	7 Sep 1993 15 Dec 2004 15 Jan 2007	693536 104247 104247	Birth Transfer Transfer	Godavari
230	F	28 Dec 1995	53	131	NY BRONX WILDS RUM CREEK	28 Dec 1995 19 Jun 2001 22 May 2015	951230 101023 101023	Birth Loan to Loan to	Dailey
288	F	23 Dec 2002	190	130	SD-WAP RUM CREEK	23 Dec 2002 7 Dec 2009	602549 109091	Birth Transfer	Raji
327	M	13 Jun 2003	190	137	SD-WAP FORTWORTH MICANOPY RUM CREEK	13 Jun 2003 13 Jun 2003 29 Apr 2008 15 Nov 2015	603312 201787 000002 115134	Birth Ownership Loan to Loan to	Taro
330	M	10 Nov 2003	202	252	DELHI SD-WAP RUM CREEK	10 Nov 2003 12 May 2007 8 Jul 2007	10004 607125 107048	Birth Transfer Loan to	Bhramputra
366	F	24 May 2005	190	209	PEACE RV RUM CREEK	24 May 2005 15 Jan 2007	105051 105051	Birth Transfer	Rani
410	F	8 Jul 2008	190	143	SD-WAP FORTWORTH RUM CREEK	8 Jul 2008 8 Jul 2008 9 Jun 2015	608248 207754 115083	Birth Ownership Transfer	Kaya
436	F	17 Oct 2010	351	143	RUM CREEK	17 Oct 2010	110065	Birth	AUTUMN
462	F	3 Mar 2012	330	209	RUM CREEK	3 Mar 2012	112051	Birth	
501	F	1 Aug 2014	351	372	SD-WAP RUM CREEK	1 Aug 2014 16 May 2017	614395	Birth Transfer	PETUNIA
516	F	4 Feb 2014	330	209	RUM CREEK	4 Feb 2014	114011	Birth	
518	M	30 Oct 2015	364	230	RUM CREEK	30 Oct 2015	115115	Birth	Scooter
545	M	28 Nov 2016	330	288	RUM CREEK COLUMBUS	28 Nov 2016 8 Apr 2021	116129 221012	Birth Transfer	

Totals: 4.10.0 (14)

## SAFARIWIL

Stud#	Sex	Birth Date	Sire	Dam	Location	Date	LocalID	Event	Name
370	M	24 Feb 2006	190	272	SD-WAP FORTWORTH SAFARIWIL	24 Feb 2006 24 Feb 2006 12 Sep 2007	606033 204504	Birth Ownership Loan to	Khali

Totals: 1.0.0 (1)

## SAN FRAN

Stud#	Sex	Birth Date	Sire	Dam	Location	Date	LocalID	Event	Name
227	M	26 May 1995	106	99	SD-WAP SAN FRAN	26 May 1995 14 Feb 1997	695264 197006	Birth Loan to	Gauhati

Totals: 1.0.0 (1)

## SANFORD

Stud#	Sex	Birth Date	Sire	Dam	Location	Date	LocalID	Event	Name
450	M	2 Jun 2011	69	244	YULEE SANFORD	2 Jun 2011 14 May 2013	114015 11H144	Birth Loan to	PJ

Totals: 1.0.0 (1)

## SD-WAP

Stud#	Sex	Birth Date	Sire	Dam	Location	Date	LocalID	Event	Name
346	F	26 Dec 2004	53	139	NY BRONX SD-WAP	26 Dec 2004 29 May 2008	M04220 608199	Birth Loan to	Lalita/Alta
351	M	29 Sep 2000	156	159	PATNA SD-WAP	29 Sep 2000 12 May 2007	RPAT9 607123	Birth Transfer	Bhopu
372	F	29 Sep 2006	190	137	SD-WAP SAN FRAN SD-WAP	29 Sep 2006 29 Sep 2006 3 Dec 2008	606309 106034 606309	Birth Ownership Transfer	Tanaya
464	F	16 Aug 2012	190	137	FORTWORTH SD-WAP	16 Aug 2012 4 Apr 2015	207594 615094	Birth Loan to	ASHA II
497	M	25 Feb 2014	351	346	SD-WAP FORTWORTH	25 Feb 2014 4 Mar 2021	614063 212689	Birth Transfer	PARVESH
514	F	24 Feb 2016	351	346	SD-WAP	24 Feb 2016	616044	Birth	ANANDI
561	F	22 Jun 2018	351	464	SD-WAP	22 Jun 2018	618244	Birth	Carole
572	F	30 Jul 2019	351	346	SD-WAP	30 Jul 2019	4000844	Birth	Anusha
579	M	26 Mar 2020	351	464	SD-WAP	26 Mar 2020	4001668	Birth	Arjun
580	F	11 Apr 2020	351	372	SD-WAP	11 Apr 2020	4001824	Birth	Lulu

Totals: 3.7.0 (10)

## SEATTLE

Stud#	Sex	Birth Date	Sire	Dam	Location	Date	LocalID	Event	Name
530	M	10 Nov 2016	351	372	SD-WAP SEATTLE	10 Nov 2016 4 Apr 2018	616577 UNK	Birth Transfer	Taj
542	M	11 Nov 2016	364	264	WILDS SEATTLE	11 Nov 2016 24 Apr 2018	116053 206623	Birth Transfer	Glenn

Totals: 2.0.0 (2)

## SINGAPORE

Stud#	Sex	Birth Date	Sire	Dam	Location	Date	LocalID	Event	Name
97	F	9 Jan 1979	94	23	KOLKATA KOLN SINGAPORE	9 Jan 1979 10 Mar 1986 2 May 1997	_____462 G4844	Birth Transfer Transfer	Gomati
161	F	5 Sep 1989	83	66	NY BRONX OKLAHOMA SINGAPORE	5 Sep 1989 5 Sep 1989 8 Nov 1993 18 Apr 2009	891296 513604 513604 G11361	Birth Ownership Transfer Transfer	Mary
487	M	13 Oct 2013	351	325	ALBUSTAN SINGAPORE	13 Oct 2013 2 Nov 2020	GIR003 G18140	Birth Loan to	THULIE
541	M	12 Jul 2016	249	325	ALBUSTAN SINGAPORE	12 Jul 2016 2 Nov 2020	GIR004 G18141	Birth Loan to	Newari

Totals: 2.2.0 (4)

## STEVENSVI

Stud#	Sex	Birth Date	Sire	Dam	Location	Date	LocalID	Event	Name
329	M	17 Sep 2003	190	209	SD-WAP	17 Sep 2003	603410	Birth	Sabari
					MICANOPY	29 Apr 2008		Loan to	
						4 Oct 2012		Ownership	
					CALGARY	16 Jun 2014		109243	
				STEVENSVI	26 Sep 2016		Loan to		
513	M	17 Feb 2016	332	342	TORONTO	17 Feb 2016	48712	Birth	NANDU
					LOSANGELE	18 Mar 2016		Ownership	
					STEVENSVI	5 Jun 2019		UNK	

Totals: 2.0.0 (2)

## STUTTGART

Stud#	Sex	Birth Date	Sire	Dam	Location	Date	LocalID	Event	Name	
123	M	29 Jan 1985	41	34	STUTTGART	29 Jan 1985	3127	Birth	Bruno	
					KOLN	9 Dec 1987		597		Loan to
					STUTTGART	23 Apr 1997		3127		Transfer

Totals: 1.0.0 (1)

## SZEGED

Stud#	Sex	Birth Date	Sire	Dam	Location	Date	LocalID	Event	Name
559	M	3 May 2018	339	376	CHESTER	3 May 2018	C18418	Birth	Akemo
					SZEGED	13 Oct 2020		UND	
563	M	26 Sep 2018	333	407	NYIREGYHA	26 Sep 2018	M13601	Birth	Csölk
					SZEGED	17 Aug 2020		4349	

Totals: 2.0.0 (2)

## TANGAN WP

Stud#	Sex	Birth Date	Sire	Dam	Location	Date	LocalID	Event	Name	
437	M	29 Oct 2010	351	288	RUM CREEK	29 Oct 2010	110067	Birth	STACKS	
					TANGAN WP	22 Nov 2016		A16572		Transfer
499	F	5 Jun 2014	147	241	BUFFALO	5 Jun 2014	M14025	Birth	MONICA	
					LOSANGELE	5 Jun 2014		993316		Ownership
					SD-WAP	9 Nov 2016		616578		Loan to
					TANGAN WP	10 Oct 2018		A18785		Transfer

Totals: 1.1.0 (2)

## TERRA NAT

Stud#	Sex	Birth Date	Sire	Dam	Location	Date	LocalID	Event	Name
280	F	15 Jul 2001	152	148	MUNICH	15 Jul 2001	079006	Birth	Nisha
					TERRA NAT	25 Mar 2004		RI002	
284	F	13 Apr 2002	123	204	STUTTGART	13 Apr 2002	7916	Birth	Shiwa
					TERRA NAT	25 Mar 2004		RI001	
575	F	2 Sep 2019	134	284	TERRA NAT	2 Sep 2019	RI006	Birth	Duna

Totals: 0.3.0 (3)

## TOKYOTAMA

Stud#	Sex	Birth Date	Sire	Dam	Location	Date	LocalID	Event	Name
240	M	20 Nov 1996	100	110	BASEL	20 Nov 1996	960043	Birth	Tarrh

Zoo Basel

International Studbook Greater One-horned or Indian Rhinoceros

						TOKYOTAMA	8 Oct 1998	2463	Transfer	
266	F	22 Dec 1999	106	209	SD-WAP	22 Dec 1999	699614	Birth	Gopon	
					KANAZAWA	19 Mar 2003	03	Transfer		
					TOKYOTAMA	9 Dec 2020	9458	Transfer		
282	M	~ 2001	WILD	WILD	NEPAL	~ 2002	NONE	Capture	Bikram	
					TOKYOTAMA	28 Mar 2002	3799	Transfer		
283	F	~ 2001	WILD	WILD	NEPAL	~ 2002	NONE	Capture	Narayani	
					TOKYOTAMA	28 Mar 2002	3800	Transfer		
					KANAZAWA	10 Mar 2021		Transfer		
Totals: 2.2.0 (4)										

TOLEDO

Stud#	Sex	Birth Date	Sire	Dam	Location	Date	LocalID	Event	Name	
502	M	31 Aug 2014	364	264	WILDS	31 Aug 2014	114073	Birth		
					SD-WAP	31 Aug 2014	614487	Ownership		
					TOLEDO	17 May 2018	13285	Transfer		
Totals: 1.0.0 (1)										

TORONTO

Stud#	Sex	Birth Date	Sire	Dam	Location	Date	LocalID	Event	Name	
332	M	27 Feb 2003	53	131	NY BRONX	27 Feb 2003	M03034	Birth	Vishnu	
					TORONTO	27 Feb 2003	39770	Ownership		
						26 Sep 2006	39770	Transfer		
342	F	15 Sep 2004	187	241	BUFFALO	15 Sep 2004	M04045	Birth	Ashakiran	
					LOSANGELE	15 Sep 2004	990974	Ownership		
					TORONTO	31 Oct 2006	41170	Loan to		
555	M	4 Jan 2018	332	342	TORONTO	4 Jan 2018	50000	Birth	Kiran	
Totals: 2.1.0 (3)										

TOUROPARC

Stud#	Sex	Birth Date	Sire	Dam	Location	Date	LocalID	Event	Name	
343	M	23 Sep 2004	184	113	PLANCKNDL	23 Sep 2004	184014	Birth	Fanindra	
					EDINBURGH	8 Jun 2006	M06F10	Loan to		
					ROTTERDAM	3 Jun 2010	108120	Loan to		
					TOUROPARC	1 Oct 2012	T12173	Loan to		
489	F	7 Nov 2013	336	360	BEAUVAL	7 Nov 2013	M01502	Birth	SALYAN	
					TOUROPARC	4 Oct 2016	T16095	Transfer		
Totals: 1.1.0 (2)										

TRIVANDRU

Stud#	Sex	Birth Date	Sire	Dam	Location	Date	LocalID	Event	Name	
175	M	~ Mar 1988	WILD	WILD	ASSAM P	~ 1988	NONE	Capture	Ramu	
					ASSAM	2 Sep 1988	1000061	Transfer		
					TRIVANDRU	19 May 1993		Transfer		
Totals: 1.0.0 (1)										

VALDOSTA

Stud#	Sex	Birth Date	Sire	Dam	Location	Date	LocalID	Event	Name
259	M	18 May 1999	106	143	SD-WAP	18 May 1999	699277	Birth	Gram
					SANDIEGOZ	4 Feb 2004	699277	Transfer	

FOUTS J 3 Oct 2007 \_\_\_\_\_ Loan to  
 VALDOSTA 8 Mar 2011 11M004 Loan to

Totals: 1.0.0 (1)

VIENNA

Stud#	Sex	Birth Date	Sire	Dam	Location	Date	LocalID	Event	Name
367	F	~ Jun 2003	WILD	WILD	NEPAL NEPAL PRK VIENNA	???? ~ Mar 2006 11 Mar 2006	NONE _____ M3065	Capture Transfer Transfer	Sundari
368	M	~ Jun 1997	WILD	WILD	NEPAL NEPAL PRK VIENNA	???? ~ Mar 2006 11 Mar 2006	NONE _____ M3066	Capture Transfer Transfer	Jange

Totals: 1.1.0 (2)

WARSAW

Stud#	Sex	Birth Date	Sire	Dam	Location	Date	LocalID	Event	Name
335	M	29 Feb 2004	132	182	BERLIN TP STUTTGART WARSAW	29 Feb 2004 29 Feb 2004 5 Sep 2006	M02503 8283 S6139	Birth Ownership Loan to	Jacob
374	F	17 Oct 2006	123	204	STUTTGART WARSAW	17 Oct 2006 26 Jun 2008	8668 S6431	Birth Loan to	Shikari

Totals: 1.1.0 (2)

WHIPPSNADE

Stud#	Sex	Birth Date	Sire	Dam	Location	Date	LocalID	Event	Name
256	F	~ 1996	WILD	WILD	CHITWAN LONDON RP WHIPPSNADE	~ 1996 29 Apr 1997 22 Sep 1998	NONE A3568 L3165	Capture Loan to Transfer	Beluki
257	F	~ 1996	WILD	WILD	CHITWAN LONDON RP WHIPPSNADE	~ 1996 29 Apr 1997 3 Nov 1998	NONE A3569 L3188	Capture Loan to Transfer	Behan
287	M	7 Dec 2002	134	185	ROTTERDAM HILVARENB WARSAW WHIPPSNADE	7 Dec 2002 29 Dec 2004 12 Apr 2005 4 Apr 2008	106592 M02334 S6414 3289	Birth Loan to Loan to Loan to	Hugo
577	F	8 Dec 2019	287	257	WHIPPSNADE	8 Dec 2019	8066	Birth	Zhiwa

Totals: 1.3.0 (4)

WILDS

Stud#	Sex	Birth Date	Sire	Dam	Location	Date	LocalID	Event	Name
264	F	14 Aug 1999	69	79	TORONTO WILDS	14 Aug 1999 9 Jun 2004	34890 104020	Birth Loan to	Sanya
451	M	13 Jul 2011	254	276	LOWRY SANFORD WILDS RUM CREEK	13 Jul 2011 12 Mar 2013 7 Jun 2017 16 Apr 2021	102936 11H143 117032 _____	Birth Loan to Loan to Transfer	JAHI
573	F	24 Aug 2019	451	264	WILDS	24 Aug 2019	119057	Birth	Rohini

Totals: 1.2.0 (3)

WROCLAW

Stud#	Sex	Birth Date	Sire	Dam	Location	Date	LocalID	Event	Name
-------	-----	------------	------	-----	----------	------	---------	-------	------

429	M	1 Feb 2010	265	229	LISIEUX Z WROCLAW	1 Feb 2010 6 Nov 2012	M10002 212318	Birth Loan to	MANAS
498	F	2 Feb 2014	345	409	PLZEN TOUROPARC WROCLAW	2 Feb 2014 26 Apr 2016 2 Apr 2019	316404 T16049	Birth Loan to Loan to	MARUSKA

Totals: 1.1.0 (2)

## YULEE

Stud#	Sex	Birth Date	Sire	Dam	Location	Date	LocalID	Event	Name
238	F	18 Sep 1996	101	138	NZP-WASH WILDS CINCINNAT YULEE	18 Sep 1996 21 May 1998 3 May 2001 10 Nov 2009	112925 980503 101080 Y94307	Birth Loan to Loan to Loan to	Chitwan
244	F	24 Aug 1997	106	130	SD-WAP YULEE	24 Aug 1997 17 Nov 2009 31 Mar 2015	697474 Y94309 Y94309	Birth Loan to Ownership	Jakichu
394	M	5 Jan 2007	222	131	NY BRONX OMAHA YULEE MONTGOMRY	5 Jan 2007 29 Apr 2011 22 Oct 2015 19 Jan 2021	M07009 20705 154312 4273	Birth Loan to Loan to Transfer	FITZGERALD
471	F	13 Dec 2012	351	413	SD-WAP YULEE	13 Dec 2012 27 Jan 2017	612425 174301	Birth Loan to	SHOMILI
488	M	27 Oct 2013	69	244	YULEE	27 Oct 2013	134054	Birth	Auggie
494	F	9 May 2013	69	238	YULEE NZP-WASH	9 May 2013 9 May 2013	134028 115143	Birth Ownership	Samba
515	F	28 Nov 2015	69	238	YULEE	28 Nov 2015	154052	Birth	Peaches
531	F	28 Nov 2016	69	244	YULEE NY BRONX	28 Nov 2016 28 Nov 2016	164084 M16218	Birth Ownership	Frankie
568	F	21 Dec 2018	394	471	YULEE	21 Dec 2018	184073	Birth	Khali

Totals: 2.7.0 (9)

## 9 Location Glossary 2020

ALBUSTAN Al Bustan Zoological Center

PO Box 12964 Al-Dhaid, Sharjah, Ash Sharigah, United Arab Emirates  
bustan55@eim.ae

AMERSFOOR Dierenpark Amersfoort

Barchman Wuytierslaan 224, Amersfoort, Utrecht, The Netherlands, 3819 AC  
+31.33.4227122 fax: +31.33.4227188 rvandermeer@dierenparkamersfoort.nl

ASSAM Assam State Zoo cum Botanical Gdn

Assam State Zoo Division, Guwahati, Assam, India, 781 005  
nipok@sify.com

BASEL Zoologischer Garten Basel

P. O. Box, Basel, Switzerland, CH-4011  
+41.61.295.3535 fax: +41.61.281.0005 beatrice.steck@zoobasel.ch

BATONROUG BREC's Baton Rouge Zoo

P.O. Box 60, Baker, Louisiana, USA, 70704-0060  
+1.225.775.3877.x205 fax: +1.225.775.3931 jpage@brzoo.org

BATUSECRE Batu Secret Zoo

Jln. Kartini No. 2 Batu, Malang, Java-timor, Indonesia  
+62.341.598183

BAYRAMOGL Faruk Yalcin Zoo (Hayvanlar Alemi &

Botanik Bahcesi), Darica - Gebze, Kocaeli, Turkey, 41870  
+90.262.653.83.15 fax: +90.262.653.46.64 yucel.yilmaz@farukyalcinzoo.com

BEAUVAL Zoo Parc de Beauval

St Aignan, Cher, France, F-41110  
+33.254.757.422 fax: +33.2.54.75.74.30 laure.pelletier@zoobeauval.com

BEIJING Beijing Zoological Gardens

137 Xi Zhi Men Wai Street, Beijing, China, 100044  
+86.1.89.4531 fax: +86.106832.1959 xiaoying0303@yeah.net

BERLINZOO Zoologischer Garten Berlin AG

Hardenbergplatz 8, Berlin, Germany, D-10787  
+49.30.25.40.12.05 fax: +49.30.25.40.12.55

BEWDLEY West Midland Safari & Leisure Park Ltd

(Grant Leisure Group), Bewdley, Worcestershire, England (uk), DY12 1LF

+44.1299.402.114 fax: +44.1299.404.519

BUFFALO Buffalo Zoo

300 Parkside Ave., Buffalo, New York, USA, 14214  
+1 716.837.3900 fax: +1 716.995.6136 kbrown@buffalozoo.org

CSWILDLIF California State Univ., Dominguez Hills

1000 E. Victoria St., Carson, California, USA, 90747

CHESTER North of England Zoological Society

Caughall Road, Upton-by-chester, Cheshire, England (uk), CH2 1LH  
+44.1244.389745 fax: +44.1244.371273 l.ball@chesterzoo.org

CHHAT BIR Mohendra Chaudhary Zoological Park

Chatt, Tehsil Dera Bassi, Chandigarh, Punjab, India, 140603  
+91 1762 297303 mczpchhatbir@gmail.com

CHIANGMAI Chiang Mai Zoo

100 Huay Kaew Road, Chiang Mai 50300, Thailand  
Tel: +66.53.210.374 Fax: +66.53.222.283  
Contact: [cmvet@yahoo.com](mailto:cmvet@yahoo.com)

DELHI National Zoological Park, New Delhi

Mathura Rd., Near Purana Quilla, New Delhi, Delhi, India, 110 003  
+91.11.4619825 fax: +91.11.4602408 nzpnewdelhi@gmail.com

DENVER Denver Zoological Gardens

City Park, Denver, Colorado, USA, 80205  
+1.720.337.1500 fax: +1.720.337.1501 jgrote@denverzoo.org

DUBBO Taronga Western Plains Zoo

Obley Road, Dubbo, New South Wales, Australia, 2830  
+61.2.6881.1447 fax: +61.2.6884.1722 fcameron@zoo.nsw.gov.au

EDINBURGH Edinburgh Zoo-Scottish National Zoo

134 Corstorphine Road, Edinburgh, Midlothian, Scotland (uk), EH12 6TS  
+44.131.314.0315 fax: +44.131.314.0376 jelliott@rzss.org.uk

EUROPA Dierenrijk (Europa)

Heiderschoor 24, Mierlo, North Brabant, The Netherlands, 5731 RG  
+31.492.668240 fax: +31.492.669241 s.rijnen@dierenrijk.nl

EVANSVILLE Mesker Park Zoo

1545 Mesker Park Drive, Evansville, Indiana, USA, 47720  
+1.812.435.6143.x405 fax: +1.812.435.6140 dduke@meskerparkzoo.com



## FOTA Fota Wildlife Park

Carrigtwohill, County Cork, Ireland

+353.21.4812736 fax: +353.21.812744 info@fotawildlife.ie

## FRESNO Fresno Chaffee Zoo

894 W Belmont Ave., Fresno, California, USA, 93728-2891

+1.559.498.5912 fax: +1.559.264.9226 lcover@fresnochaffeezoo.org

## GUERNO Parc Zoologique de Chateau de Branféré

Branféré, Le Guerno, Morbihan, France, F-56190

anthony.dabadie@branfere.com

## HEMKER GF Hemker Park and Zoo

26715 County Road 39, Freeport, Minnesota, USA, 56331

+1.320.836.2426

## HYDERABAD Nehru Zoological Park

Forest Department, Bahadur Pura, Hyderabad, Andhra Pradesh, India, 500 064

+91.40.523355 fax: +91.40.523355 hydzo@rediffmail.com

## KANAZAWA Kanazawa Zoologic Gardens of Yokohama

5-15-1 Kamariya-Higashi, Kanazawa, Yokohama, Kanagawa, Japan, 236-0042

+81.45.783.9101 fax: +81.45.782.9972

## KANPUR Kanpur Zoological Park

Allen Forest Azad Nagar, Kanpur, Uttar Pradesh, India, 208 002

kanpur-zoo@yahoo.com

## KATHMANDU National Trust for Nature Conservation

Central Zoo, Kathmandu, Bagmati, Nepal, 00977

+977.1.5528323 fax: +977.1.5521467 jeewan@centralzoo.com.np

## LA FLECHE Parc Zoologique de La Fleche

Le Tertre Rouge, La Fleche, Sarthe, France, F-72200

+33.243.48.1917 fax: +33.243.48.1918 vet@zoo-la-fleche.com

## LA TESTE Zooland-Park

Route de Cazaux, La Teste-de-buch, Gironde, France, F-33260

+33.5.56.54.71.44 zooland@orange.fr

## LISBON Jardim Zoologico / Lisbon Zoo

Estrada de Benfica, 158-160, Lisboa, Portugal, 1549-004

+351.21.7232944 fax: +351.217.232.956 asogorb@zoo.pt

## LISIEUX Z CERZA Centre d'Etude Rech Zool Augeron

Hermival les Vaux, Lisieux, Calvados, France, F-14100

+33.231.621576 fax: +33.231.623.340 conservation@cerza.com

LOWRY ZooTampa at Lowry Park  
1101 W Sligh Ave, Tampa, Florida, USA, 33604-5958  
+1.813.935.8552 x222 fax: +1.813.930.2331 ashley.todd@zootampa.org

LUCKNOW Lucknow Zoological Park  
Prince Of Wales Zool. Gardens Tr, Lucknow, Uttar Pradesh, India, 226 001  
+91.522.2239588 lucknowzoo@yahoo.com

MADRID Z Zoo Aquarium de Madrid (GRPR)  
Casa de Campo, s/n, Madrid, Spain, E-28011  
+34.91.512.3770 fax: +34.91.711.8163 mperomingo@grpr.com

METROZOO Zoo Miami  
One Zoo Boulevard, Miami, Florida, USA, 33177-1499  
+1.305.251.0400.x849 fax: +1.305.378.6381 rrogers@miamidade.gov

MICANOPY Micanopy Zool. Preserve (Rhudy Holly)  
19350 NW 123 Court, Micanopy, Florida, USA, 32667  
+1.301.928.3567

MITO CHO Akiyoshidai Safari Park  
1212 Aka, Mitou-cho, Mine, Yamaguchi, Japan, 754-0302  
+81.8396.2.1000 fax: +81.8396.2.1005

MUNICH Münchener Tierpark Hellabrunn  
Tierparkstrasse 30, München, Bavaria, Germany, D-81543  
+49.89.62.50816 fax: +49.89.62.50.852 beatrix.koehler@tierpark-hellabrunn.de

MYSORE Sri Chamarajendra Zoo (Mysore Zoo)  
Sri Chamarajendra Zool. Gardens, Mysore, Karnataka, India, 570 010  
+91.9900802526 fax: +91.821.30008 mysorezooisis@gmail.com

NAGOYA Nagoya Higashiyama Zoo  
3-70 Higashiyamamotomachi, Nagoya, Aichi, Japan, 464-0804  
+81.52.782.2111 fax: +81.52.782.2140 [ngyzoo01@crocus.ocn.ne.jp](mailto:ngyzoo01@crocus.ocn.ne.jp)

NURNBERG Tiergarten der Stadt Nürnberg  
Am Tiergarten 30, D-90480 Nürnberg, Germany  
Tel: +49.911.54546 Fax: +49.911.5454802

NY BRONX Bronx Zoo/Wildlife Conservat'n Society  
2300 Southern Blvd., Bronx, New York, USA, 10460-1099  
+1.718.220.8711 fax: +1.718.220.7114 dcraft@wcs.org

## NYIREGYHA Nyíregyházi Állatpark Nonprofit KFT

(Sosto Zoo), Sostofurdo, Szabolcs-szatma, Hungary, H-4431  
+36.424.79702 fax: +36.424.02031 office@sostozoo.hu

## NZP-WASH Smithsonian National Zoological Park

3001 Connecticut Avenue NW, Washington, District Of Columbia, USA, 20008-2537  
+1.202.633.3244 fax: +1.202.633.8727 murphym@si.edu

## OKLAHOMA Oklahoma City Zoological Park

2101 NE 50th St., Oklahoma City, Oklahoma, USA, 73111-7199  
+1.405.425.0274 fax: +1.405.425.0220 dwhitton@okczoo.com

## OMAHA Omaha's Henry Doorly Zoo

3701 South 10th St., Omaha, Nebraska, USA, 68107-2200  
+1.402.738.2085 fax: +1.402.733.4415 stephanieh@omahazoo.com

## PATNA Sanjay Gandhi Biol.Park-Forest.Off.

Wildlife Circle, Patna, Bihar, India, 800 001  
zoodir\_pat@sify.com

## PLANCKNDL Wild Animal Park Mechelen Planckendael

Royal Zool. Society of Antwerp, Mechelen (muizen), Antwerpen, Belgium, B-2812  
+32.15.414921 fax: +32.15.422935 marleen.huyghe@kmda.org

## PLZEN Zoologická a botanická zahrada Plzen

príspevková organizace, Plzen, Zapadocesky, Czech Republic, CZ-301 16  
konas@plzen.eu

## QINGYUAN Qing Yuan ex-situ Conserv Base, Endanger

Wild Animals, Yinzhan Forest Farm, Qingyuan, Guangdong, China  
+86 20 8478 0333

## ROCKTON African Lion Safari &amp; Game Farm Ltd

R.R. 1, Cambridge, Ontario, Canada, N1R 5S2  
+1.519.623.8091 fax: +1.519.623.9542 lgagnon@lionsafari.com

## ROLLING H Rolling Hills Wildlife Adventure

625 N. Hedville Rd., Salina, Kansas, USA, 67401  
+1.785.827.3738 brenda@rollinghillszoo.org

## ROTTERDAM Rotterdam Zoo

Diergaarde Blijdorp, Rotterdam, South Holland, The Netherlands, 3000 AM  
+31.10.4431.411 fax: +31.10.4431.466 l.van.sonsbeek@rotterdamzoo.nl

## RUM CREEK Center for Conserv. of Trop. Ungulates

46470 Farabee Road, Punta Gorda, Florida, USA, 33982

+1.941.637.3827 fax: +1.863.993.4547 cctu@desoto.net

SAFARIWIL Safari Wilderness (Lex Salisbury)  
10850 Moore Rd., Lakeland, Florida, USA, 33809  
+1 813.382.2120

SAN FRAN San Francisco Zoological Gardens  
1 Zoo Rd., San Francisco, California, USA, 94132-1098  
+1.415.753.7021 ingridr@sfzoo.org

SANFORD Central Florida Zoological Park  
P.O. Box 470309, Lake Monroe, Florida, USA, 32747-0309  
+1.407.323.4450.x140 fax: +1.407.321.0900 jayne@centralfloridazoo.org

SD-WAP San Diego Zoo's Safari Park  
15500 San Pasqual Valley Rd, Escondido, California, USA, 92027  
+1.619.685.3250 fax: +1.619.232.4117 tgiezendan@sandiegozoo.org

SEATTLE Woodland Park Zoo  
601 N. 59th St., Seattle, Washington, USA, 98103-5858  
+1 206.548.2513 krista.adelhardt@zoo.org

SINGAPORE Singapore Zoological Gardens  
80 Mandai Lake Road, Singapore, Singapore, 729826  
+65.63608668 fax: +65.63638365 wendy.chua@wrs.com.sg

STEVENSVI Safari Niagara  
2821 Stevensville Rd., Stevensville, Ontario, Canada, L0S 1S0  
+1.905.382.9669

STUTTGART Wilhelma Zoo  
Neckartalstrasse, PO Box 50 12 27, Stuttgart, Bad-württemberg, Germany, D-70342  
+49.711.5402.133 fax: +49.711.5402.222 ulrike.rademacher@wilhelma.de

SZEGED Szeged Zoo  
PO Box 724, Szeged, Cserepes-sor, Hungary, H-6701  
+36.62.542.530 fax: +36.62.445.299 endredi.lajos@zoo.szeged.hu

TANGAN WP Tanganyika Wildlife Park (Jim Fouts)  
1037 S 183rd St West, Goddard, Kansas, USA, 67052  
+1.316.393.0088 fax: +1.316.794.8370 jimfouts@tanganyikawildlife.org

TERRA NAT Terra Natura S.A.  
Foia del Verdader 1, Benidorm, Alicante, Spain, E-03502  
+34.902.522.333 fax: +34.902.522.444 enrique.sanchez@terranatura.com

## TOKYOTAMA Tama Zoological Park

7-1-1 Hodokubo, Hino-shi, Tokyo, Japan, 191-0042  
+81.42.591.1611 tama\_shiiku@tzps.or.jp

## TOLEDO Toledo Zoological Gardens

PO Box 140130, Toledo, Ohio, USA, 43614-0801  
+1.419.389.6403x3088 fax: +1.419.385.8670 wyn.hall@toledo zoo.org

## TORONTO Toronto Zoo

361A Old Finch Ave., Scarborough, Ontario, Canada, M1B 5K7  
+1.416.392.5969 fax: +1.416.392.4979 mwaisglasstorontozoo.ca

## TOUROPARC Touroparc

La Maison Blanche, Romanèche-thorins, Rhone, France, F-71570  
+33.385.355153 fax: +33.385.355234 franck.chaduc@wanadoo.fr

## TRIVANDRU Thiruvananthapuram (Trivandrum) Zoo

Department of Museums and Zoos, Thiruvananthapuram C, Kerala, India, 695 033  
+91.471.2316275 fax: +91.471.2318294 museumzoo@sancharnet.in

## VALDOSTA Wild Adventures Theme Park

3766 Old Clyattville Road, Valdosta, Georgia, USA, 31601  
+1.229.559.1330

## VIENNA Schönbrunner Tiergarten GmbH

Zoo Vienna, Vienna, Austria, A-1130  
+43.1.877.9294 fax: +43.1.877.9641 office@zoovienna.at

## WARSAW Miejski Ogród Zoologiczny Warsaw

ul. Ratuszowa 1/3, Warszawa, Poland, 03-461  
+4822.619.6909 fax: +48.22.619.4046 andrzej.kruszewicz@zoo.waw.pl

## WHIPSNAD E ZSL Whipsnade Zoo

Zoological Society of London, Dunstable, Bedfordshire, England (uk), LU6 2LF  
+44.20.7449.6452 fax: +44.20.7722.2852 hannah.jenkins@zsl.org

## WILDS The Wilds

14000 International Rd., Cumberland, Ohio, USA, 43732  
+1.740.638.5030x2072 fax: +1.740.638.2287 pglaze@thewilds.org

## WROCLAW ZOO Wroclaw Sp z o.o.

ul. Wróblewskiego 1, Wroclaw, Poland, 51-618  
+48.71.348.30.24 fax: +48.71.348.37.68 lutra@zoo.wroc.pl

## YULEE White Oak Conservation Center

581705 White Oak Rd., Yulee, Florida, USA, 32097-9807

+1.904.225.3290 registrar@white-oak.org