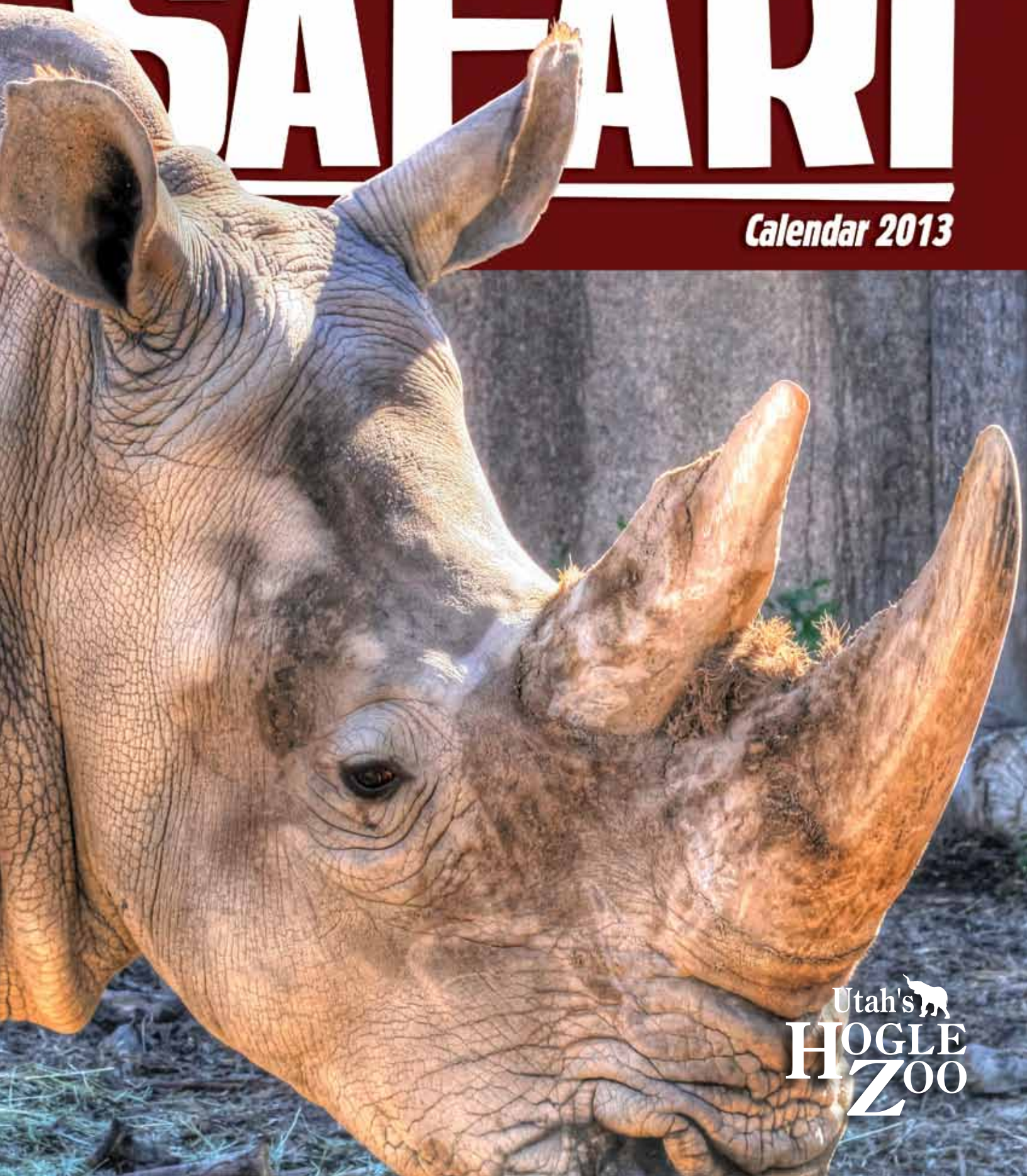


THE

SAFARI

Calendar 2013

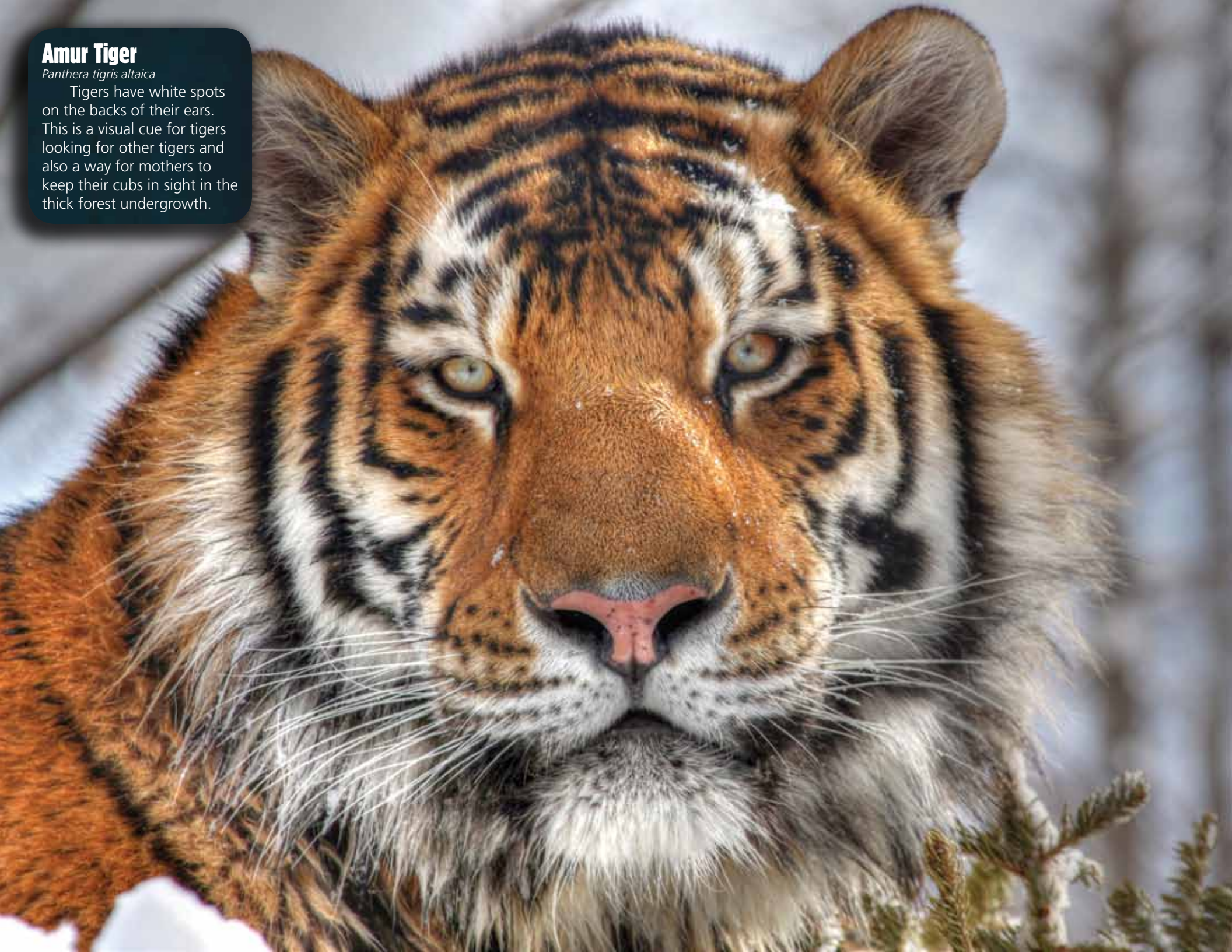


Utah's
HOGLE
ZOO

Amur Tiger

Panthera tigris altaica

Tigers have white spots on the backs of their ears. This is a visual cue for tigers looking for other tigers and also a way for mothers to keep their cubs in sight in the thick forest undergrowth.



2012 December

(F) - Free
 (\$) - Fee
 (P) - Pre-registered
 (O) - Off-site
Education Class
Member-only Event
Event
AAZK Event
Booster Member-only Event

Sunday	Monday	Tuesday	Wednesday	Thursday	Friday	Saturday
						Zoo Storytime (P)(S) 1 10 – 11 a.m.
						ZooLights! (\$) 8 5:30 – 9 p.m. →
2	3	ZooLights! 4 Member Night (\$) 5:30 – 8 p.m.	ZooLights! 5 Member Night (\$) 5:30 – 8 p.m.	Book Club (\$) 6 7 – 9 p.m.	7	8
ZooLights! (\$) 2 5:30 – 8 p.m. →				ZooLights! (\$) 4 5:30 – 9 p.m. →		
9	Storytime with Mrs. Claus (P)(S) 10 6 – 8 p.m.	Preschool Class (P)(S) 11 9:30 a.m. – noon				Breakfast With Santa (P)(S) 15 9 a.m. & 11:30 a.m.
ZooLights! (\$) 9 5:30 – 8 p.m. →		Storytime with Mrs. Claus (P)(S) 10 6 – 8 p.m.				
Breakfast With Santa (P)(S) 16 9 a.m. & 11:30 a.m.		Storytime with Mrs. Claus (P)(S) 18 6 – 8 p.m.				
ZooLights! (\$) 16 5:30 – 8 p.m. →						
23	Christmas Eve 24	Zoo Closed 25 Christmas Day				
ZooLights! (\$) 23 5:30 – 8 p.m. →						
30	Early New Year's Eve Countdown (\$) 31 9 p.m.		ZooLights! (\$) 26 5:30 – 8 p.m. →	ZooLights! (\$) 27 5:30 – 9 p.m. →		
ZooLights! (\$) 30 5:30 – 8 p.m. →	ZooLights! Closes → New Years Eve					

Historical Fact

To honor the centennial of the pioneers' arrival to the valley, renowned Utah sculptor Dr. Avard Fairbanks sculpts two mountain lions atop 18-foot granite columns for the new entrance to the Zoo in 1947.

**All event days and times are subject to change.
 Please check www.hoglezoo.org for updated information.**



White-Handed Gibbon

Hylobates lar

This species is believed to be the fastest of all the primates and the most agile tree-dwelling animal. White-handed gibbons are able to catch birds out of the air and eat them after landing.

2013 January

- (F) - Free
- (\$) - Fee
- (P) - Pre-registered
- (O) - Off-site
- Education Class**
- Member-only Event**
- Event**
- AAZK Event**
- Booster Member-only Event**

Sunday	Monday	Tuesday	Wednesday	Thursday	Friday	Saturday
		1 Zoo Closed New Year's Day	2	3 Book Club (\$) 7-9 p.m.	4	5
6	7	8	9	10	11 Members-only Storytime (F) 1 p.m.	12 Preschool Class (P)(\$) 9:30 a.m. - noon Cats and Cocoa (F) Noon - 2 p.m.
13	14	15	16	17	18	19
20	21	22	23	24	25	26 Teacher Workshop (P) 8 a.m. - 4 p.m.
Inauguration Day	Martin Luther King Jr. Day					Bald Eagle Appreciation Day
27	28	29	30	31	<div style="background-color: #333; color: white; padding: 10px; border-radius: 10px;"> <p>Green Fact Save money and trees! Share magazines and newspaper subscriptions with friends and neighbors. It will not only save you money but also reduce the amount of paper used. Approximately one billion trees worth of paper are thrown away every year in the U.S.!</p> </div>	

Historical Fact

In 1912, the Salt Lake Parks Department started a zoo with an original investment of \$153.

**All event days and times are subject to change.
Please check www.hoglezoo.org for updated information.**

Giraffe

Giraffa camelopardalis

A giraffe's purple tongue can reach lengths of 18 inches. This means it can use its tongue to clean its ears!



2013 February

- (F) - Free
- (\$)- Fee
- (P) - Pre-registered
- (O) - Off-site
- Education Class**
- Member-only Event**
- Event**
- AAZK Event**
- Booster Member-only Event**

Sunday	Monday	Tuesday	Wednesday	Thursday	Friday	Saturday
					1	2
						World of the Wild Art Show Opens Groundhog Day
3	4	5	6	Book Club (\$) 7-9 p.m.	7	8 Mating Dances and Wild Romances (P)(\$) 7-10 p.m.
10	11	12	13	14	15	16
				Valentines Day		
17	18	19	20	21	22	23 Polar Bear Whiteout (P) 10 a.m. - 2 p.m.
	President's Day					Project WILD (P)(\$) 9 a.m. - 3 p.m.
24	25	26	27	28		
			International Polar Bear Day			

Green Fact
Become junk free! Each year, every adult in the U.S. receives 41 pounds of junk mail. To help reduce the 4 million tons of junk mail sent each year, go to www.dmaconsumers.org and have your name removed from the mailing list.

Historical Fact

"World of the Wild" Art Show debuted in the Zoo's auditorium in 1993.

**All event days and times are subject to change.
 Please check www.hoglezoo.org for updated information.**



Siamese Crocodile

Crocodylus siamensis

A croc's tongue doesn't move—
it's attached to the bottom of its
mouth!

2013 March

- (F) - Free
- (\$)- Fee
- (P) - Pre-registered
- (O) - Off-site
- Education Class**
- Member-only Event**
- Event**
- AAZK Event**
- Booster Member-only Event**

Sunday	Monday	Tuesday	Wednesday	Thursday	Friday	Saturday
						1 Frog Watch Training (P) 1 – 4 p.m. 2
3	4	5	6	7 Book Club (\$) 7 – 9 p.m.	8	9
10	11	12	13	14	15	16
Daylight Savings Starts				Learn About Butterflies Day		
17	18	19	20	21	22	23
World of the Wild Art Show Closes St. Patrick's Day			First Day of Spring			
24	25	26	27	28 Fish & Wildlife Merit Badge (\$) 6 – 9 p.m.	29	30 Breakfast with the Bunny (P)(\$) 9 a.m., 11:30 a.m. and 1:30 p.m.
31 Easter Sunday						

Historical Fact

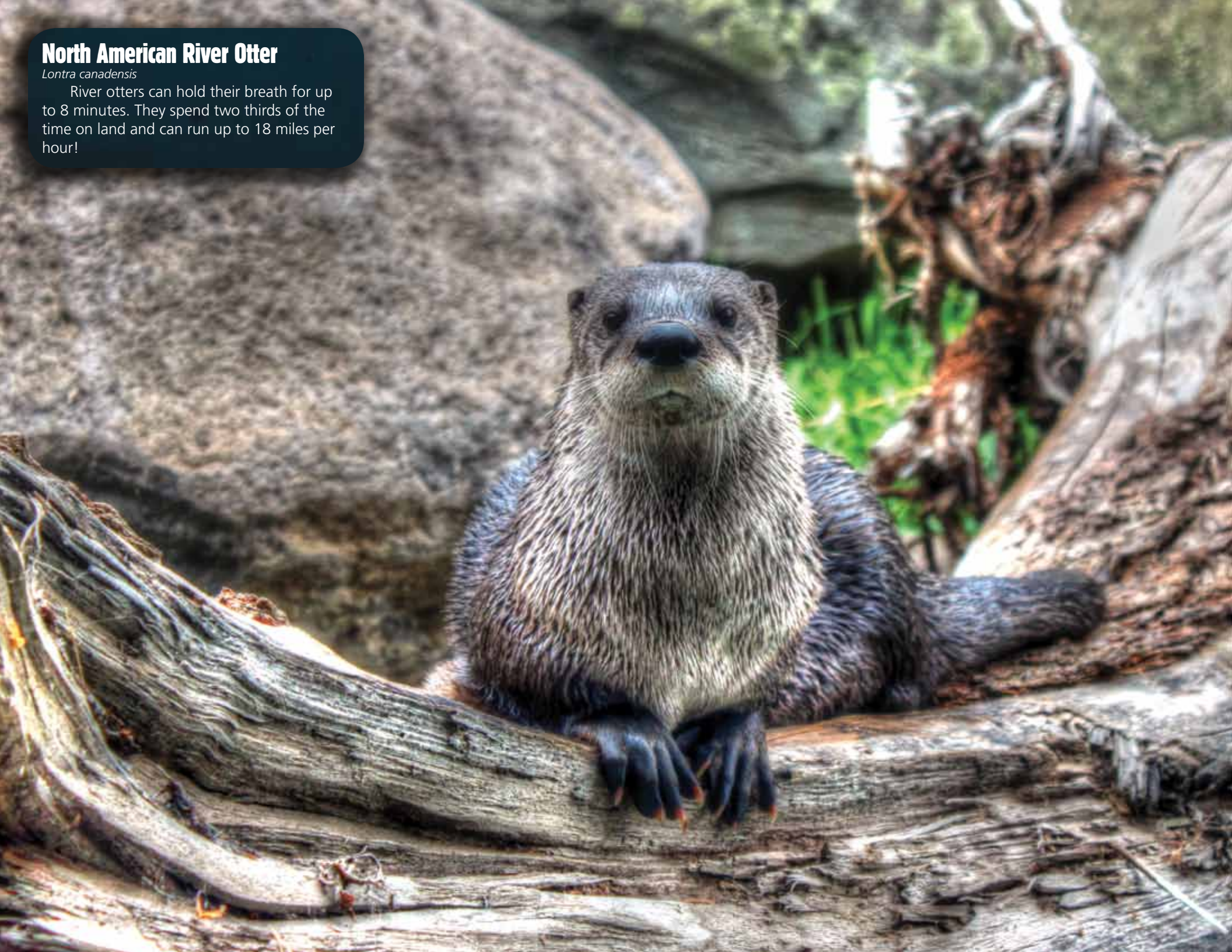
In 1931, Mr. and Mrs. James Hogle donated a parcel of land at the mouth of Emigration Canyon - which is where Utah's Hogle Zoo is located today.

**All event days and times are subject to change.
Please check www.hoglezoo.org for updated information.**

North American River Otter

Lontra canadensis

River otters can hold their breath for up to 8 minutes. They spend two thirds of the time on land and can run up to 18 miles per hour!



2013 April

- (F) - Free
- (\$) - Fee
- (P) - Pre-registered
- (O) - Off-site
- Education Class**
- Member-only Event**
- Event**
- AAZK Event**
- Booster Member-only Event**

Sunday	Monday	Tuesday	Wednesday	Thursday	Friday	Saturday		
	Zoo Camp (P)(\$) 9 a.m. – 3 p.m.	1	2	3	Book Club (\$) 7 – 9 p.m.	4	5	6
7	8	9	10	11	Members-only Storytime (F) 1 p.m.	12	Preschool Class (P)(\$) 9:30 a.m. – noon	13
	Draw a Picture of a Bird Day							
14	15	16	17	Environmental Science Merit Badge (P)(\$) 6 – 9 p.m.	18	19	20	
21	22	23	24	25	26	Party for the Planet (F) 10 a.m. – 2 p.m.	27	
	Earth Day				Arbor Day			
28	29	30						

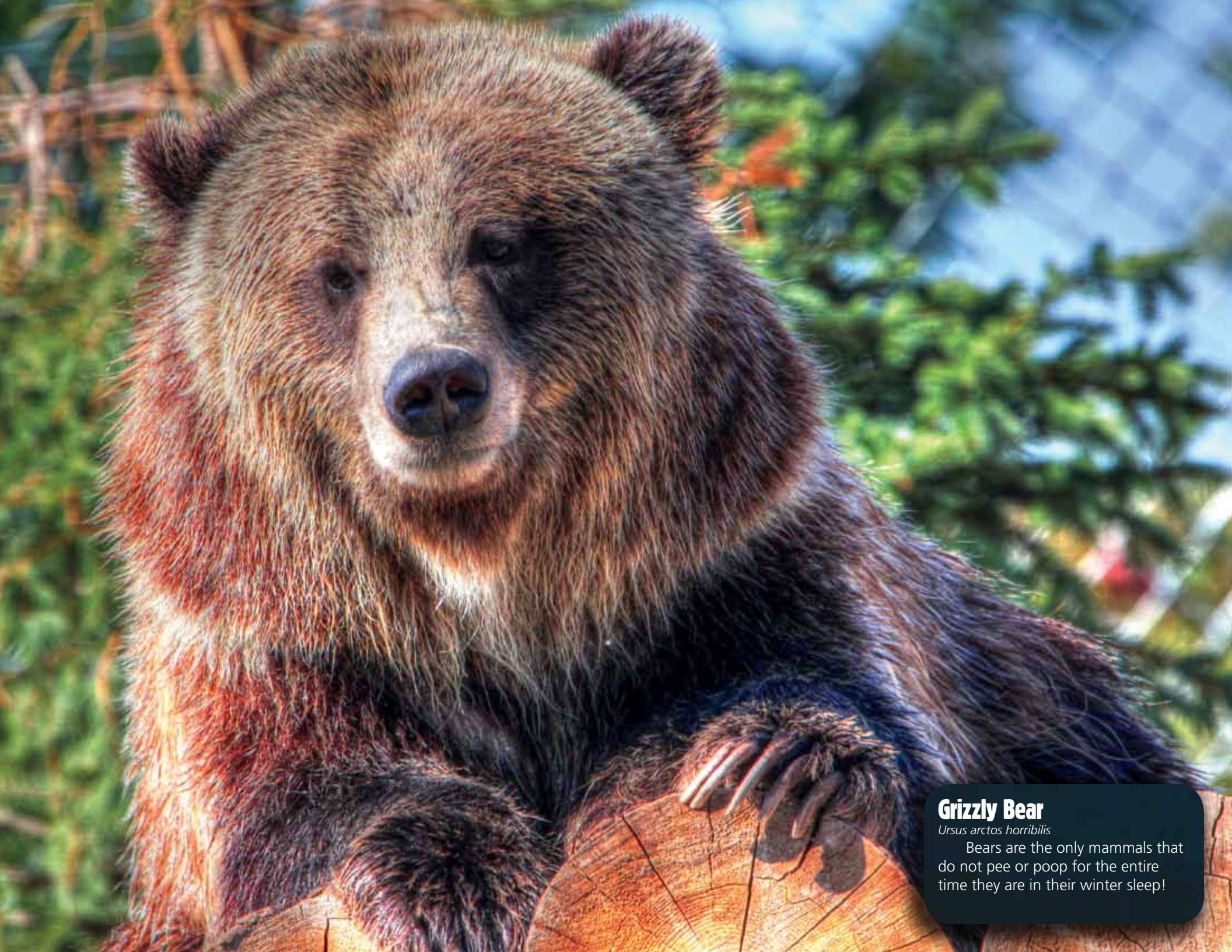
Green Fact

Buy local. The average fresh-food item we eat for dinner is transported 1,500 miles to us—which requires a lot of fossil fuel energy and contributes to climate change. To help, choose foods in season that are produced locally.

Historical Fact

Steve Chindgren's "World of Flight" Bird Show debuted at the Zoo in 1995.

**All event days and times are subject to change.
Please check www.hoglezoo.org for updated information.**



Grizzly Bear

Ursus arctos horribilis

Bears are the only mammals that do not pee or poop for the entire time they are in their winter sleep!

2013 May

- (F) - Free
- (\$)- Fee
- (P) - Pre-registered
- (O) - Off-site
- Education Class**
- Member-only Event**
- Event**
- AAZK Event**
- Booster Member-only Event**

Sunday	Monday	Tuesday	Wednesday	Thursday	Friday	Saturday
			1	Book Club (\$) 7 – 9 p.m.	2	3
			World of Flight Bird Show Opens		Creatures of Habitat Opening	4
5	6	7	8	Sunset Safari (F) Gates close at 8 p.m.	9	10
11						11
Mothers' Day Brunch (P)(\$) 11 a.m.	12	13	14	15	16	17
Mother's Day						18
						Sunrise Safari (F) 7:30 a.m.
						Armed Forces Day
19	Brick-by-Brick Class (P)(\$) 6:30 – 9 p.m.	20	Sunset Safari (F) Gates close at 8 p.m.	21	22	23
Frog-Jumping Jubilee Day					Insect Study Merit Badge (P)(\$) 6 – 9 p.m.	24
						Don't Fry Day (F) 10 a.m. – 2 p.m.
25						25
26		27	28	29	Reptile & Amphibian Merit Badge (P)(\$) 6 – 9 p.m.	30
	Memorial Day					31
					ZooSnooz (P)(\$) 7 p.m. – 9 a.m.	

Historical Fact

In 1965, the Lion Drinking Fountain debuted at the Zoo and was an immediate crowd favorite!

All event days and times are subject to change.
Please check www.hoglezoo.org for updated information.

Amur Leopard

Panthera pardus orientalis

Leopards can hear five times more sounds than humans. They can even hear the ultrasonic squeaks made by mice.



2013 June

(F) - Free
 (\$) - Fee
 (P) - Pre-registered
 (O) - Off-site
Education Class
Member-only Event
Event
AAZK Event
Booster Member-only Event

Sunday	Monday	Tuesday	Wednesday	Thursday	Friday	Saturday
						1 America Zoo Day
2	3	4	5 Book Club (\$) 7 p.m. – 9 p.m. Sunset Safari (F) Gates close at 8 p.m.	6	7	8 Keeper Camp (P)(\$) 7:30 a.m. – 2:30 p.m. Project WILD (P)(\$) 9 a.m. – 3 p.m.
9	10	11	12 Nature Merit Badge (P)(\$) 8 a.m. – noon	13	14 Environmental Science Merit Badge (P)(\$) 9 a.m. – noon Members-only Storytime (F) 1 p.m. Flag Day	15 Sunrise Safari (P)(\$) 7:30 a.m. Keeper Camp (P)(\$) 7:30 a.m. – 2:30 p.m. Preschool Class (P)(\$) 9:30 a.m. – noon
16 Father's Day	17 Master Naturalist Wetlands (P)(\$) 9 a.m. – 5 p.m.	18 Sunset Safari (F) Gates close at 8 p.m.	19	20	21 Bowling for Rhinos (O)(\$) 5 – 9 p.m. First Day of Summer	22 Zoo Unbirthday (F) 10 a.m. – 2 p.m. Members-only tea party (P)(\$) 11 a.m. & 1:30 p.m.
23	24	25	26 Booster Night (F) 6 – 8 p.m. Booster level and above	27	28	29 Predator Awareness Day (F) 10 a.m. – 2 p.m.
30	Zoo Camp, Kindergarten (P)(\$) 9 a.m. – 3 p.m.					

Historical Fact

On June 29, 2006, Asian Highlands, a new home to several species of Asian cats, opened in the southwest corner of the Zoo.

**All event days and times are subject to change.
 Please check www.hoglezoo.org for updated information.**

A close-up photograph of a Bornean orangutan's face. The skin is dark brown and wrinkled, particularly around the eyes and nose. The orangutan has a calm expression with its mouth slightly open. Long, reddish-brown hair is visible around the face and on the forehead.

Bornean Orangutan

Pongo pygmaeus pygmaeus

Orangutans are now extinct in much of Asia. Farming, logging, and the burning of forests have destroyed 80% of the rain forests where orangutans made their homes. Poachers often kill orangutan mothers and sell their young in the illegal pet trade.

2013 July

- (F) - Free
- (\$)- Fee
- (P) - Pre-registered
- (O) - Off-site
- Education Class**
- Member-only Event**
- Event**
- AAZK Event**
- Booster Member-only Event**

Sunday	Monday	Tuesday	Wednesday	Thursday	Friday	Saturday
	Project WILD (P)(\$) 9 a.m. – 3 p.m.	Nature Merit Badge (P)(\$) 8 a.m. – noon		Military Appreciation Discount Independence Day		
7			Don't Step on a Bee Day	Book Club (\$) 7 – 9 p.m.		Ice Block Day (F) 10 a.m. – 2 p.m.
14	Zoo Camp, Grades 3-4 (P)(\$) 9 a.m. – 3 p.m.					Keeper Camp (P)(\$) 7:30 a.m. – 2:30 p.m.
			National Zoo Keeper Week			
21		Sunset Safari (F) Gates close at 8 p.m.		Lunch with a Keeper (P)(\$) 11:30 a.m. – 1 p.m.	Bird Study Merit Badge (P)(\$) 9 a.m. – noon	Enrichment Day (F) 10 a.m. – 2 p.m.
28	Zoo Camp, Grades 5-7 (P)(\$) 9 a.m. – 3 p.m.		Pioneer Day			

Historical Fact

In 1970, Hogle Zoo's Docent Council, an active and well-trained group of volunteers, was organized.

**All event days and times are subject to change.
Please check www.hoglezoo.org for updated information.**



African Elephant

Loxodonta africana

An elephant's skin is so sensitive that it can feel a fly landing on it.

2013 August

(F) - Free
 (\$) - Fee
 (P) - Pre-registered
 (O) - Off-site
Education Class
Member-only Event
Event
AAZK Event
Booster Member-only Event

Sunday	Monday	Tuesday	Wednesday	Thursday	Friday	Saturday
				Book Club (\$) 1 7 – 9 p.m. Zoo Camp, Grades 5-7 (P)(\$) 9 a.m. – 3 p.m. Continued	2 Teddy Bear Picnic (F) 3 10 a.m. – 2 p.m. Keeper Camp (P)(\$) 7:30 a.m. – 2:30 p.m.	
4	Master Naturalist Mountains (P)(\$) 9 a.m. – 5 p.m.	5 Booster Night (F) 6 6 – 8 p.m.	Wild Libations (P)(\$) 7 6:30 – 9 p.m.	8	9	10
11		12	Wild Libations (P)(\$) 14 6:30 – 9 p.m. Mammal Study Merit Badge (P)(\$) 9 a.m. – noon	Sunset Safari (F) 15 Gates close at 8 p.m. Reptile & Amphibian Merit Badge (P)(\$) 9 a.m. – noon	16	17
18	19	Fish & Wildlife Merit Badge (F) 20 9 a.m. – noon	21	Environmental Science Merit Badge (P)(\$) 22 9 a.m. – noon	23	Sunrise Safari (F) 24 7:30 a.m.
25	26	Sunset Safari (F) 27 Gates close at 8 p.m.	28	29	30	31

Historical Fact

On August 25, 1916, the Zoo purchased Princess Alice, a 32-year old Asian elephant named after Theodore Roosevelt's daughter, Alice. Penny and nickel donations from area schoolchildren raised \$3,250 for Princess Alice's purchase from a traveling circus called the Sells-Floto Show Company.

**All event days and times are subject to change.
 Please check www.hoglezoo.org for updated information.**

California Sea Lion

Zalophus californianus

A group of sea lions in the water is called a raft!



2013 September

- (F) - Free
- (\$)- Fee
- (P) - Pre-registered
- (O) - Off-site
- Education Class**
- Member-only Event**
- Event**
- AAZK Event**
- Booster Member-only Event**

Sunday	Monday	Tuesday	Wednesday	Thursday	Friday	Saturday
1	2 Labor Day	3	4	5 Zoo Rendezvous (P)(\$) 6 – 11 p.m.	6	7 Project WILD (P)(\$) 9 a.m. – 3 p.m.
8 Grandparents Day	9	10	11 Patriots Day	12 Environmental Science Merit Badge (P)(\$) 9 a.m. – noon	13 Members-only Storytime (F) 1 p.m.	14 Preschool Class (P)(\$) 9:30 – noon Safety Safari (F) 10 a.m. – 2 p.m.
15	16	17	18	19	20	21 Keeper Camp (P)(\$) 7:30 a.m. – 2:30 p.m. Meet-Your-Best-Friend Pet Adoption (F) 10 a.m. – 4 p.m.
22 World Rhino Day	23	24	25	26	27	28 First Day of Fall
29	30					

Green Fact

Farmed or wild caught? Farmed fish may seem like a good alternative, but that's not always the case. Farm-raised salmon, for instance, are raised in pens. Their waste pollutes the water, and disease can spread to wild fish. Sometimes wild is better.

Historical Fact

HyDari, an African elephant, arrived at Hogle Zoo in 1966.

**All event days and times are subject to change.
Please check www.hoglezoo.org for updated information.**



African Straw-colored Fruit Bat

Eidolon helvum

A mother bat can locate her pup by its scent and sound out of millions in a roost!

2013 October

- (F) - Free
- (\$) - Fee
- (P) - Pre-registered
- (O) - Off-site
- Education Class**
- Member-only Event**
- Event**
- AAZK Event**
- Booster Member-only Event**

Sunday	Monday	Tuesday	Wednesday	Thursday	Friday	Saturday
		1	2	3 Book Club (\$) 7 – 9 p.m.		4 Zooper Hero Day (F) 10 a.m. – 2 p.m.
6	7	8	9	10	11	12 Wolf Awareness Day (F) 10 a.m. – 2 p.m.
13	14 Colombus Day	15	16	17	18 Fright-Full Fest (P)(\$) 6:30 – 8:30 p.m.	19 Preschool Class (P)(\$) 9:30 a.m. – noon Fright-Full Fest (P)(\$) 6:30 – 8:30 p.m.
20	21 Reptile Awareness Day	22	23	24 Fright-Full Fest (P)(\$) 6:30 – 8:30 p.m.	25 Fright-Full Fest (P)(\$) 6:30 – 8:30 p.m.	26 Booster Early Admission, Boo at the Zoo (F) 8 – 9 a.m. Boo at the Zoo (F) 9 a.m.–3 p.m.
27	28	29	30	31 Halloween		

Green Fact

Clean green. Use white vinegar and baking soda for your household cleaning. Unlike drain openers and many bathroom or kitchen cleaners, vinegar and baking soda are non-toxic.

Historical Fact

On August 14, 1932, a stone relief carving of Princess Alice (sculpted and donated by J.R. Fox) was unveiled and dedicated on the front of the “Main Building”.

**All event days and times are subject to change.
Please check www.hoglezoo.org for updated information.**



Gray Wolf

Canis lupus

Wolves can travel long distances at a regular trot of about five miles per hour. They are much quicker when they hunt. Wolves can also travel far from their home pack and their regular territory in search of food—sometimes hundreds of miles.

2013 November

- (F) - Free
- (\$) - Fee
- (P) - Pre-registered
- (O) - Off-site
- Education Class**
- Member-only Event**
- Event**
- AAZK Event**
- Booster Member-only Event**

Sunday	Monday	Tuesday	Wednesday	Thursday	Friday	Saturday
					1	2
<div style="background-color: #333; color: white; padding: 5px; border-radius: 10px;"> Green Fact Reusing saves lives! Plastic garbage that makes its way into the ocean kills as many as one million sea creatures every year! In fact, there is a plastic island floating in the Pacific Ocean about the size of the state of Texas and over twenty feet thick. </div>						
3	4	5	6	7 Book Club (\$) 7 – 9 p.m.	8	9 Project WILD (P)(S) 9 a.m. – 3 p.m.
Daylight Savings Ends						
10	11	12	13	14	15	16 Preschool Class (P)(S) 8 a.m. – noon
	Military Appreciation Discount Veteran's Day					
17	18	19	20	21	22	23
	Reptile Awareness Day					
24	25	26	27	28 Feast with the Beast (F) 9 a.m. – noon	29 ZooLights! Booster Preview (P)(S) 5:30 – 9 p.m.	30 Keeper Camp (P)(S) 7:30 a.m. – 2:30 p.m. ZooLights! Opening (P)(S) 5:30 – 9 p.m.
			Thanksgiving Day			

Historical Fact

In 1959, Kali, the Zoo's popular Asian elephant, received one vote for city mayor – it appears at least one voter liked Kali better than either of the two candidates on the ballot!

**All event days and times are subject to change.
Please check www.hoglezoo.org for updated information.**



Polar Bear

Ursus maritimus

Polar bears throw tantrums! Experts have observed frustrated polar bears throwing chunks of ice, kicking piles of snow or growling in disappointment after losing prey they've been trying to catch.

2013 December

- (F) - Free
- (\$) - Fee
- (P) - Pre-registered
- (O) - Off-site
- Education Class**
- Member-only Event**
- Event**
- AAZK Event**
- Booster Member-only Event**

Sunday	Monday	Tuesday	Wednesday	Thursday	Friday	Saturday
1 ZooLights! (\$) 5:30 – 8 p.m.	2	3 ZooLights! Member Night (\$) 5:30 – 8 p.m.	4 ZooLights! Member Night (\$) 5:30 – 8 p.m.	5 ZooLights! (\$) 5:30 – 9 p.m.	6	7 Preschool Class (P)(\$) 9:30 a.m. – noon Keeper Camp (P)(\$) 7:30 a.m. – 2:30 p.m.
8 ZooLights! (\$) 5:30 – 8 p.m.	9	10	11	12 Book Club (\$) 7 – 9 p.m.	13	14
15 ZooLights! (\$) 5:30 – 8 p.m.	16	17 Storytime with Mrs. Claus (P)(\$) 6 – 8 p.m.	18 Storytime with Mrs. Claus (P)(\$) 6 – 8 p.m.	19 ZooLights! (\$) 5:30 – 9 p.m.	20	21 Breakfast With Santa (P)(\$) 9 a.m. & 11:30 a.m. First Day of Winter
22 Breakfast With Santa (P)(\$) 9 a.m. & 11:30 a.m.	23 Storytime with Mrs. Claus (P)(\$) 6 – 8 p.m.	24	25 Zoo Closed Christmas Day	26	27	28 Keeper Camp (P)(\$) 7:30 a.m. – 2:30 p.m.
29 ZooLights! (\$) 5:30 – 8 p.m.	30	31 Early New Year's Eve Countdown (\$) 9 p.m. Christmas Eve ZooLights! Closes New Years Eve				

Green Fact

Keep your cool at home. Lower the heat. You'll save as much as 2-3% on your heating costs for every degree you drop.

Historical Fact

The last old cage-type exhibits, constructed at Hogle Zoo in the 1930s, were demolished in 1983.

All event days and times are subject to change.
Please check www.hoglezoo.org for updated information.

THE SAFARI

Utah Zoological Society
2600 East Sunnyside Avenue
Salt Lake City, Utah 84108

Nonprofit Organization
U.S. Postage
PAID
Salt Lake City, UT
Permit Number 2421

ZOO SPONSORS

Hogle Zoo wishes to sincerely thank the 2012 corporate sponsors for their ongoing support of Zoo events, exhibits and programs. We encourage all our members to show your support by frequenting these establishments or purchasing their products.

Corporate Partners



Media Partners



Community Partners



Zoo Rendezvous Partners



ZooLights! Partners

