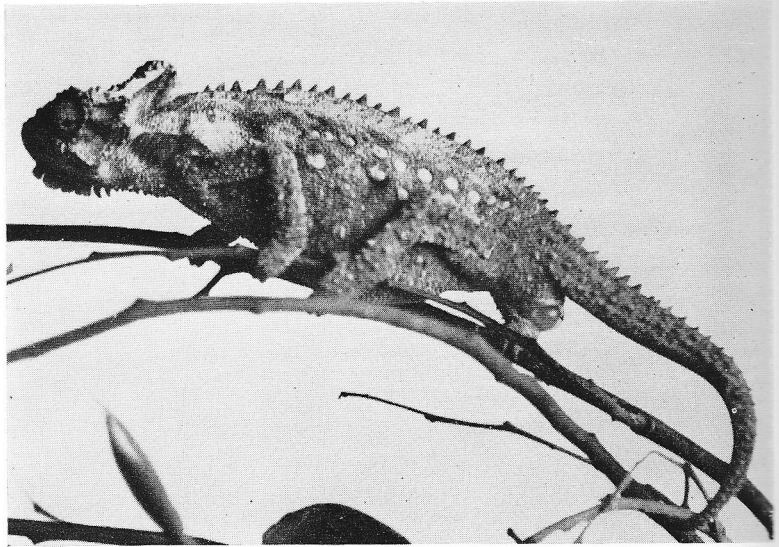




32 *Previous page.* Female Black rhinoceros *Diceros bicornis*, and her calf born at London Zoo on 26 November 1969. The calf, a female, weighed 13.6 kg (30 lb) at birth.

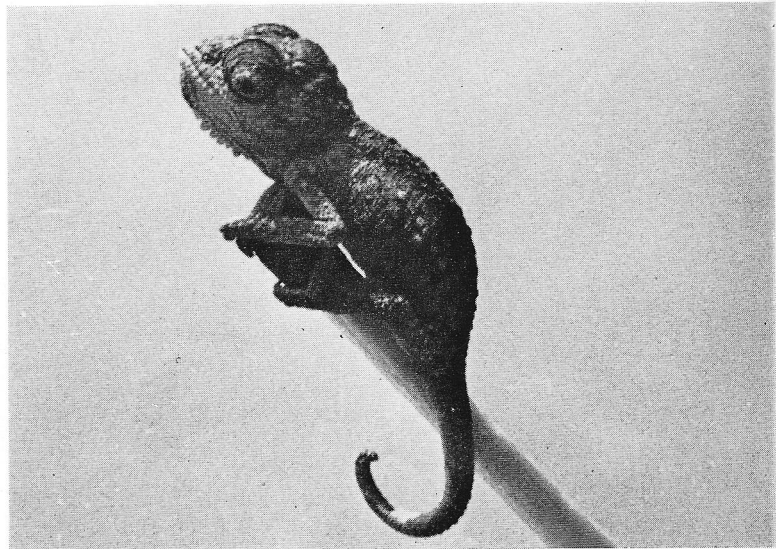


33

33-35. Birth of a chameleon *Microsaura ventralis* at Port Elizabeth Museum. At the moment of birth (33) the young chameleon with its yolk sac is enveloped in embryonic membrane. After breaking the membrane, the infant crawls on to the branch (34) and pulls itself free from the remnants of the yolk sac. They are able to walk very soon after being born and the baby is sitting comfortably on a match head (35). It is 33 mm in length and weighs 0.246 g.



34



35