



Photo courtesy of the John G. Shedd Aquarium

## Shedd Aquarium Hatches Endangered Ringed Map Turtles

Three baby ringed map turtles (*Graptemys oculifera*) successfully hatched from four clutches of eggs this year at Shedd Aquarium. Shedd has housed the parents for more than 10 years. The female is approximately 8.5 inches in length; two males are considerably smaller, at about 5 inches.

Found in the Pearl River system of Mississippi and Louisiana, ringed map turtles have been classified as a federally threatened species since 1986. They are endangered due to pollution and collection for the pet trade. The ringed map gets its name from its attractive dark olive carapace marked with a yellow or orange colored ring in each scute. Along the spine are vertebral projections that explain the ring map's other common name – sawback.

Once the female lays her eggs, a Shedd staff member places them in an incubator set at 82 degrees. The eggs, which are 1.5 inches long, usually hatch 60 to 75 days later. Clutch size averages between two and six eggs. A fifth clutch of four eggs was laid at Shedd on August 20 and currently is incubating.

## Significant Birth at Cleveland Metroparks Zoo

Cleveland Metroparks Zoo announced its first birth of a single, male pacarana on 2 August. This little-known South American forest rodent is a relative of agoutis and paca. The International Species Information System reports no additional births in the three holding institutions for this species in North America. The baby is being parent-reared in a mixed species exhibit with two-toed sloths and squirrel monkeys.



Photo by Mike Steinberg/Cleveland Metroparks Zoo

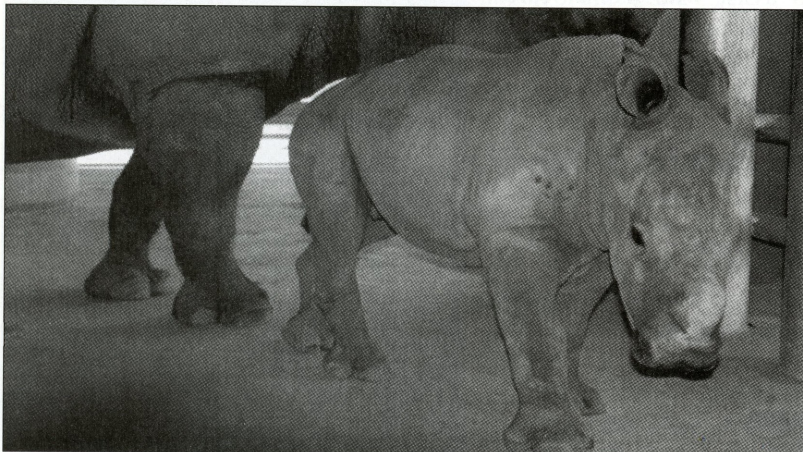


Photo courtesy of Disney's Animal Kingdom

## White Rhino Born At Disney's Animal Kingdom

A female white rhino was born at Disney's Animal Kingdom on 24 July. The dam was transferred to Disney's Animal Kingdom from White Oak Plantation in 1998, after breeding, as part of the White Rhino SSP recommendations. Mother and calf are doing well and will rejoin the herd in a few months. At nine weeks, the calf weighed 361 lbs. This is the second white rhino born at Disney's Animal Kingdom.