



# GRUMETI FUND

## IMPACT REPORT 2019







The survival of the human race is inextricably linked to the wellbeing of the natural world. Now, more than ever, there is a need for solutions that allow people, wildlife and ecosystems to exist in relative harmony.

To make urgent changes, governments, companies, communities and NGOs are under pressure to transform the way they operate and collaborate. Information sharing is a key element of this transformation. Organizations that have practical experience like the Grumeti Fund have a responsibility to participate in finding and sharing sustainable solutions for conservation and development.

## CONTENTS

2	MISSION STATEMENT
3	MESSAGE FROM THE DIRECTOR
4	KNOWLEDGE WEB
6	COMMUNITY OUTREACH
13	ANTI-POACHING
17	RESEARCH AND MONITORING
24	CONSERVATION MANAGEMENT
29	RELATIONSHIPS
32	PARTNERS
34	CONNECT
37	FINANCIALS
IBC	THANK YOU

---

FRONT COVER: It is widely acknowledged that elephants possess wisdom to rival any other species. They share valuable information with other members of their family and pass down knowledge and life-sustaining techniques for future generations. © Tara Shupe



### MISSION STATEMENT

The mission of the Grumeti Fund is to collaboratively contribute to the conservation of the Serengeti ecosystem and the upliftment of local communities. In partnership with the Tanzanian government and other key stakeholders, we promote conservation best practice and knowledge sharing to optimize impact.



Stephen Cunliffe © Tara Shupe

## MESSAGE FROM THE DIRECTOR

**Can individuals really make a difference to the future of our planet? With the doomsday predictions that assault us daily on 24-hour media channels and global decision makers far removed from the environmental front lines, it is not surprising that there is a growing sense of hopelessness for many when confronted by the sheer scale of the challenge at hand.**

The Grumeti concessions form an invaluable buffer to the world-renowned Serengeti National Park, and the interface between this celebrated ecosystem and nearly 90,000 people living on the boundary is tense. We have to protect critically endangered species like black rhino and safeguard the iconic wildebeest migration, while at the same time ensuring that tangible benefits are felt within neighboring communities.

The good news is that this win-win scenario can and has been achieved. Since its inception in 2003, the Grumeti Fund and our partners have shown that it is indeed possible to find sustainable solutions to the problems facing protected areas and the rural communities that live alongside them.

In 2019 alone, we upscaled the education component of our community outreach program and facilitated the diversification of livelihoods through a rural enterprise development program with numerous ex-poachers among the participants. We initiated Research and Innovation for the Serengeti Ecosystem (RISE) and started construction on a state-of-the-art applied research facility that will promote knowledge sharing and scale our positive impact across the Serengeti ecosystem.

We successfully undertook the largest black rhino translocation ever into Tanzania adding 10% to the current national rhino population with the introduction of nine more critically endangered eastern black rhino. We began the construction of a boundary fence to protect the rhino as well as to mitigate against the scourge of human-wildlife conflict that negatively affects rural communities and wildlife alike.

All this and more is only possible because of the generous support the Grumeti Fund receives from our donors and supporters. Individuals can and do make a difference to the future of our planet, and we thank each and every one of you for your contribution to the Grumeti Fund over the years, enabling our impactful conservation and community work to expand and flourish.

With a new decade ahead, our goal is to contribute what we have learned – our successes and our failures – to the global conservation and development conversation, helping to preserve the future of our planet with a virtual safety net – a web of knowledge. A major focus of our new five-year strategy is increasing this knowledge through education, within our team and beyond. Through partnerships with leading scientists and researchers, we will strive to enable the next generation to make informed decisions that are good for both humankind and the environment.

# 45,000+ people reached through 30+ educational initiatives 2019



## YOUTH

- 6 local high school students traveled to South Africa to participate in the **World Youth Wildlife Summit** in South Africa
- 27 local primary school teachers participated in **English Training**
- 29 local high school teachers attended the **Environmental Education Center**
- 80 local students participated in the **Environmental Club Conference**
- 162 scholarships awarded
- 355 local fifth graders participated in **English language camp**
- 464 local high school students attended the **Environmental Education Center**



## ECOSYSTEM SECURITY

- 1 private pilot's license completed by Head of Anti-Poaching
- 2 Grumeti Fund managers attended the **Malilangwe Dangerous Drugs Course** in Zimbabwe
- 2 Malilangwe Trust scouts spent 5 weeks training TAWA and Grumeti Fund staff in **rhino monitoring and tracking techniques**
- 4 Grumeti Fund team members participated in a **rhino monitoring exchange** in Akagera National Park in Rwanda
- 6 dog handlers completed **canine first aid training**
- 8 Grumeti Fund scouts completed **motorbike training**
- 10 participants from the Grumeti Fund, TAWA and TANAPA attended a course in the **management of wildlife poison incidents** conducted by the Endangered Wildlife Trust
- 13 participants from the Grumeti Fund, TANAPA, Bunda and Serengeti Districts, and TAWA attended a course in **herbicide management**
- 98 Grumeti Fund scouts participated in **firearm and radio training**
- 12,400 villagers attended **34 conservation film screening events**



## EMPOWERMENT

- 4 girls on an **empowerment road trip** to Kenya with **BRAVE**
- 4 Tanzanian students and 3 teachers completed the inaugural **Women in the Field Program**
- 3,269 girls attended women's **empowerment events**
- 20,290 people attended a **cultural dance and film screening** focusing on **empowerment** and **female genital mutilation awareness**



## RESEARCH

- 2 managers went on a **site visit to Save the Elephants**
- 2 graduate students sponsored to pursue **applied research**
- 2 training scholarships awarded
- 3 managers visited the **Dian Fossey Gorilla Fund Karisoke Research Center**
- 8 organisations pursuing **research** in collaboration with the Grumeti Fund
- 10 Tanzanian graduate students were sponsored to attend the **TAWIRI research conference**



## FURTHER EDUCATION

- 3 Grumeti Fund managers enrolled in or completed their **MBA degrees**
- 8 Singita School of **Cooking students** were sponsored by the Grumeti Fund
- 267 individuals from **12 local villages** graduated from the **Rural Enterprise Development (RED) program**





Scholarship students at Issenye Secondary School. For two years the Grumeti Fund has led a mentorship program, providing extra support for the students to achieve their educational goals. © Tara Shupe

## COMMUNITY OUTREACH

The Grumeti Fund’s Community Outreach Program *UPLIFT (Unlocking Prosperous Livelihoods for Tomorrow)* is grounded in the belief that knowledge has the potential to shape an individual’s livelihood and future for the better. Education is a powerful tool that can empower individuals and communities alike, break down gender inequality, open doors to new careers and ultimately disrupt the poverty trap. The program is focused on four key areas – Education, Empowerment, Environmental Awareness and Enterprise Development – and aims for long-term, sustainable change that will meaningfully impact the lives of villagers and wildlife for future generations.



Local high school students attend a five-day residential course at the Environmental Education Center. © Tara Shupe

## EDUCATION

In Tanzania the medium of instruction in secondary schools and the language of business is English, yet fluency remains a challenge for local students coming from Swahili-medium primary schools. For the third consecutive year, UPLIFT hosted **English language camps** in partnership with Concordia Language Villages for **355 fifth graders**, while **27 primary school teachers** attended the second annual English teacher training.

**Scholarships** for secondary school, vocational studies and university were awarded to **162 students** in 2019, while the annual career fair allowed community members to learn more about the variety of career paths available.

“What I like best in the scholarship program is the way we girls are being taken care of. I would like to study physics, chemistry and math because this will help me to achieve my goals.”

**PAULINE CHACHA**  
Scholarship recipient at Issenye Secondary School

## EMPOWERMENT

Working with female leaders and organizations in Tanzania, UPLIFT organized **5 empowerment events** in 2019. These brought together **3,269 girls** from **13 secondary schools** to talk about pertinent issues such as female genital mutilation and the importance of education and menstrual hygiene **taboo topics** that are seldom spoken about but which massively impact the lives of girls.

During December when **female genital mutilation** is traditionally practiced, the Community Outreach team joined forces with local non-profit, Hope for Women & Girls Tanzania. Together they reached **20,290 men and women** in the region via an informational film and cultural dance explaining the brutality and illegality of this harmful practice.

“At the heart of the women working in the Grumeti Fund is the belief that we can make change for conservation and community development. We believe in a wonderful future for our children. We believe in the power of people. And we believe in the power of women to make that change.”

**KATHERINE CUNLIFFE**  
Head of Outreach and Sustainability



## ENTERPRISE DEVELOPMENT

With over 99% of those living on the boundary of the protected area surviving as subsistence farmers, the need for livelihood diversification is high, both to assist people in their rise out of poverty and to mitigate human wildlife conflict.

In partnership with business incubation experts Raizcorp, UPLIFT successfully implemented the third year of its rural Enterprise Development Program in 2019. The **Village Learning** aspect of the program saw weekly sessions on business skills and personal development welcoming **264 budding entrepreneurs**, 64% of whom were women.

The intensive, high-touch, one-on-one entrepreneurial **Guiding Program** saw the participation of **11 entrepreneurs** in 2019. By the end of the year, three had graduated, and all had experienced a **41% average growth** in turnover. Female participants experienced an exceptional **105% average growth**.

The Enterprise Development Program also supported the creation of a small honey house, from which **197kg of honey** was collected in its first year of operation.

“I was a poacher. I had to poach because I couldn’t fulfil my basic needs. But then I took a loan and opened a shop to sell fabric. Soon after, I received entrepreneurial training from the Grumeti Fund, and I decided to become a seamstress. I learned how to sew. Now I am a good seamstress and I make clothes for people and earn a good living. My message to my fellow women is that we can. We don’t have to wait to be given everything. Now is the time for you to work hard because you can succeed. The time to have things handed to you has passed.”

**GRACE MATIKO**

Member of the Rural Enterprise Development (RED) Guiding Program



Since joining the Rural Enterprise Development Guiding Program Amos Matiko opened a honey house in Bonchugu Village. He sources honey from several bee farmers in the area. His main market is the Singita lodges.  
© Beezie Burden

## ENVIRONMENTAL AWARENESS

The Environmental Education Center (EEC) was able to scale its program by 60% in 2019, reaching **464 students** and **29 teachers** from **15 local secondary schools**. Through the EEC’s reach, **5,210 students** in secondary schools participated in environmental clubs and **3,103 trees** were planted.

“The youth of today are the parents of tomorrow. If we invest in them through education, empowerment and environmental awareness they will become ambassadors for others who have missed opportunities to learn about the protection of their natural heritage. They will take good care of the Serengeti ecosystem in the future, making decisions that are beneficial to the environment and passing that knowledge on to their children.”

**FRIDA MOLLEL**

Community Outreach Program Manager



Girls Empowerment © Ross Couper





**COMMUNITY  
OUTREACH STATS**

**EDUCATION**

- 7** US Peace Corp volunteers placed in **7 secondary schools** to teach science and math subjects
- 29** teachers placed by Teach for Tanzania in **12 primary schools**
- 96%** pass rate for scholarship graduates
- 14** women participated in the televised **Serengeti Girls Run** in support of programs uplifting women and girls
- 38** scholarship students participating in a mentorship program with Grumeti Fund and Singita managers
- 162** scholarships awarded
- 18** volunteers from Concordia Language Village led English camps
- 42** participants in life skills training
- 3,222** local high school girls received re-usable pads to enable school attendance



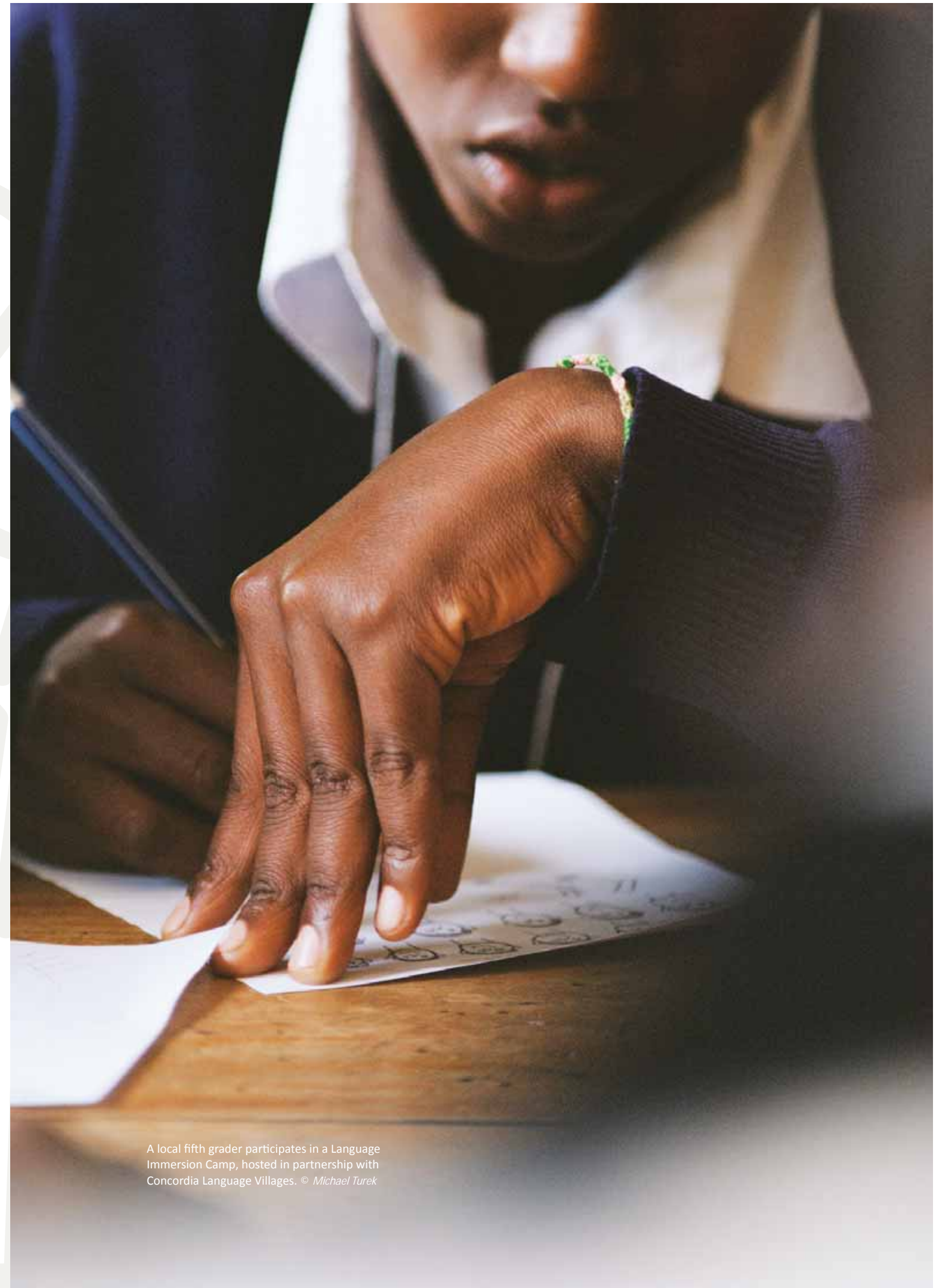
**ENTERPRISE DEVELOPMENT**

- 96%** of Village Learning participants now have access to power
- 41%** average growth in turnover for entrepreneurs in the RED Guiding program
- 49%** growth in turnover for the honey house project
- 64%** of the Village Learning graduates were women
- 105%** average growth in turnover for female entrepreneurs in the RED Guiding program



**ENVIRONMENTAL AWARENESS**

- 4** schools with active beekeeping projects
- 3,103** trees planted



A local fifth grader participates in a Language Immersion Camp, hosted in partnership with Concordia Language Villages. © Michael Turek





Canine Unit Supervisor Mgoye Rugatiri stands with Popo, who bravely dedicated his life to protecting Tanzania's wildlife © *Richie Graham*



Joseph Chacha was making ends meet as a poacher when he was hired by the Grumeti Fund to be a part of the de-snaring unit two years ago. After showing anti-poaching dedication and prowess, he became an integral member of the Mobile Patrol Unit and motorbike team © *Tara Shupe*

## ANTI-POACHING

Ensuring the security and sustainability of the protected area requires a multi-faceted approach, including the combination of community outreach and anti-poaching. With the threat to biodiversity growing, the escalating demand for bushmeat, and the newly introduced black rhino, the prevention of poaching in the Grumeti concessions has never been more important. Fortunately, the Grumeti Fund's Anti-Poaching department has evolved from a group of hard-working unarmed scouts back in 2003 to a multi-layered law enforcement team with effective intelligence-gathering strategies, sophisticated technology and, aerial support. It is testament to their efficiency and perseverance that in 2019, not a single elephant or rhino was poached and 246 poachers were detained.



**INTELLIGENCE GATHERING AND SPECIAL OPERATIONS**

While apprehending poachers who have already killed an animal is critical in the fight against poaching, the department’s primary focus is to prevent poaching from happening in the first place. This requires information. Through collaboration with the Tanzanian government, the department’s Joint Intelligence Unit and Special Operations Group have increased the efficiency of their intelligence-gathering network and can now focus resources and time on interdiction. 2019 saw a **17% reduction** in the number of animals poached compared to 2018. This proactive approach to anti-poaching has been achieved through strong Community Outreach programs and relationships building, and has allowed the Grumeti Fund to pursue ambitious long-term projects such as the reestablishment of black rhino in the Western Serengeti.

**MOBILE PATROL UNIT**

Interdiction is only possible with speed, stealth and experience. In 2019, an effort to enhance coverage of the protected area was implemented with the creation of the Mobile Patrol Unit. The unit is made up of **21 game scouts** who are able to deploy covertly in four-man teams to any point in the protected area at any time. With the acquisition of **four motorbikes**, as well as camouflaged tenting and solar-powered equipment, the unit is highly mobile and self-sufficient.

**CANINE UNIT**

One of the department’s key resources is the Canine Unit. Over the course of 2019, a two-year old Belgian Malinois named **Oke** joined the team, all **6 dog handlers** received canine first aid training and qualified as working dog trainers through the American Society for Canine Trainers. While the department achieved great success in 2019 with over **200kg of bushmeat** recovered and **15 arrests**, there were also moments of hardship. The unit lost a beloved ‘canine scout’, Popo, when he was bitten by a venomous snake during a live operation.

“Working in teams is critically important. At the end of the day we are all on the same side and all trying to achieve the same thing which is to conserve the Serengeti ecosystem for future generations.”  
**WESLEY GOLD**  
 Head of Anti-Poaching and Law Enforcement



Oke © Ross Couper



Grumeti Fund scouts use night vision to work covertly in the dark © Ami Vitale



Mobile Patrol Unit © Roshni Lodhia



Special Operations Group scouts © Michael Turek





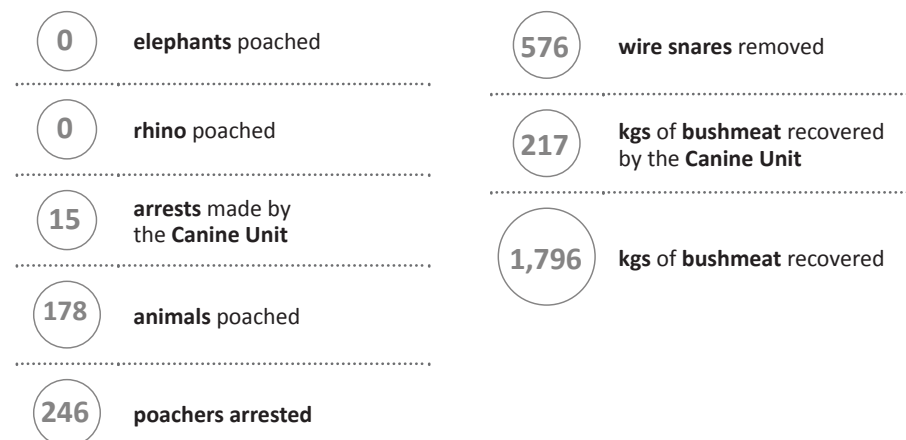
The Husky A1-C is used for anti-poaching surveillance and monitoring of the protected area and key species such as the eastern black rhino © Ross Couper

### AERIAL SUPPORT

As the scope of operations has grown through the introduction of critically endangered and highly valuable species such as black rhino, so has the momentum to establish a functional aerial support program encompassing all levels of security, management and monitoring. In 2019, the Grumeti Fund purchased an Aviat Husky A-1C and the head of Anti-Poaching, completed his pilot's license.



### ANTI-POACHING STATS



Leopard cub © Mat Goodman

## RESEARCH AND MONITORING

The Research and Monitoring department is focused on by data gathering and the dissemination of research findings that inform decision-making in the protected area and beyond. The department is fully committed to the Grumeti Fund's mission of knowledge sharing, and has contributed significantly through numerous reports, research papers, educational events and collaborative projects in 2019.





Benson Benjamin monitoring one of the 30 collared elephants that are part of a project aimed at reducing human-elephant conflict © Dr Kirsten Denninger-Snyder

**ECOLOGICAL MONITORING**

In 2019, **three important reports** related to ecological monitoring were produced, most notably the Grumeti Multispecies Riparian Survey. Results indicated substantial increases in the leopard and lion populations, and an unexplained decline in species including bushbuck, colobus monkey and white-backed vultures.

**EDUCATION**

The Research and Monitoring team participated in or facilitated multiple educational events over the course of the year including training workshops and conferences. Adding to the prestige and expertise of the team, the department’s ecologist completed an **MBA in Conservation Leadership** through the African Leadership University.

**RESEARCH COLLABORATIONS**

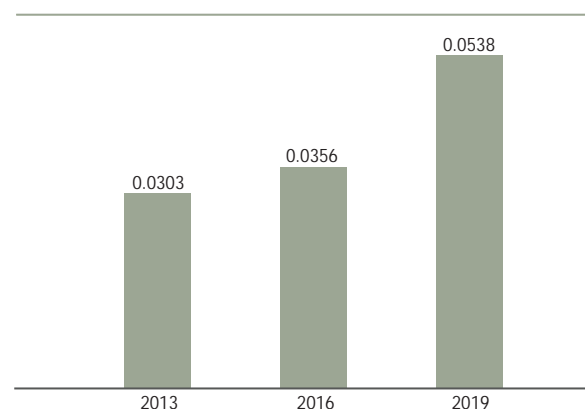
Research collaborations with the University of Minnesota, Colorado State University and the Tanzanian Wildlife Research Institute continued in 2019, including the elephant collaring program, an extensive camera trap survey and the sponsorship of graduate students undertaking research relevant to conservation challenges in the concession and the wider Serengeti. 2019 also saw the establishment of research relationships with Stanford, Princeton and Deep Mind for future collaborative research studies.



“While our work here at Grumeti is a critical contribution to the conservation of the Serengeti ecosystem, its significance far transcends the Serengeti ecosystem – for these iconic landscapes and the wildlife therein are a precious heritage to our country and the global common good”.

**NOEL MBISE**  
Head of Research and Monitoring

Leopard Abundance Index (# km-1)\*



\*Results from the riparian survey suggests a positive upward trend in leopard abundance

**RHINO MONITORING**

Following the introduction and release of the critically endangered eastern black rhino (*Diceros bicornis michaeli*), the Research and Monitoring department took on a new role and new staff to **monitor free-ranging rhino behavior** and movements. This work is carried out in close collaboration with the Tanzanian government, as well as the Grumeti Fund’s Conservation Management and Anti-Poaching departments.



**RESEARCH AND MONITORING STATS**

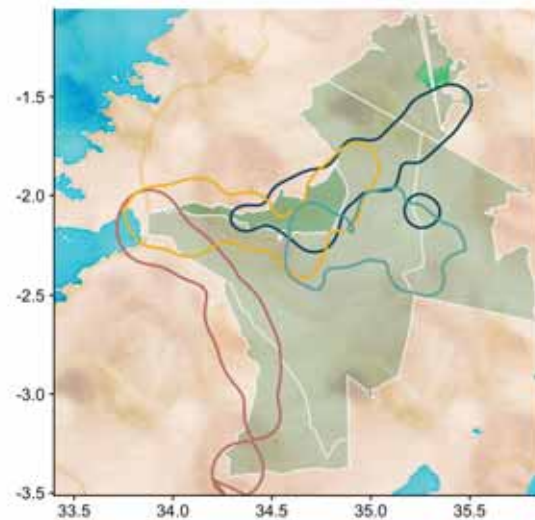
- 1** team member enrolled in a Bachelor’s degree
- 2** publications in scientific journals
- 5** elephant collars replaced
- 30** elephant collars deployed
- 66%** overall success rate for removing elephants from farms or preventing access when actively responding
- 528** geofence alerts responded to from 1 June 2019 by Grumeti Fund and government and community partners
- 147,000** camera trap images classified by more than **5,900** volunteers, surpassing the 1 million classification mark since the project launch in 2018
- 506,594** GPS locations recorded from **30** elephants over one year





Participants from the Women in the Field Program learn about species identification © Dr Kirsten Denninger-Snyder

“Data enables us to evaluate and justify the choices we make, while collaborations with research universities bring new skills, increasing what we can accomplish exponentially via expert analysis and constant feedback on how we can be more effective.”  
**DR. KRISTEN DENNINGER-SNYDER**  
 Head Scientist RISE



This map is indicative of 90% of the home range estimates for four collared elephant bulls: Mkonga (yellow), Lowana (orange), Matobo (blue), and Mtembezi (green). The far-ranging and cross-boundary movements of these animals illustrates the need for large, intact ecosystems to enable the long-term conservation of the species.



External rendering of RISE © MASS Architects



RISE conference room rendering © MASS Architects

**Research and Innovation for the Serengeti Ecosystem (RISE)** is an applied research program and facility launched by the Grumeti Fund. Its mission is to develop and support research targeting tangible solutions to combat the most pressing conservation issues of our time with the aim of benefiting the people and wildlife of the Serengeti ecosystem, Tanzania and beyond.

In 2019, significant progress was made with respect to the construction of the research facility, with the build completion anticipated for April 2020. The building incorporates key components of sustainable design such as solar power, rainwater harvesting and the use of local materials.

2019 also saw the successful completion of the inaugural **Women in the Field program**. The three-week course took place in November, and welcomed four students and three instructors from across Tanzania. Modules covered data maintenance and research design, social and ecological data collection, and logistics.

Core objectives for 2020 include the development of **new research collaborations** within Tanzania and abroad, and the expansion of programs that support the **advancement of researchers and women** within the conservation sector.





The 350,000 acre Grumeti concessions form a crucial part of the Serengeti ecosystem. In addition to rejuvenating and preserving the landscape, the Grumeti Fund works with government, local communities and other stakeholders on various conservation and community projects, ranging from the re-introduction of locally extinct wildlife species to managing wild fires and reducing the impact of invasive alien plants.





Controlled management burn © Roshni Lodhia

## CONSERVATION MANAGEMENT

The Conservation Management department is responsible for maintaining and sustaining the habitat in which the wildlife of the Grumeti concessions abounds. This requires diligent and strategic management, balancing management interventions with allowing the ecosystem the space to manage itself. On a regular basis the team removes invasive alien plants, suppresses arson fires, prescribes management burns across key areas and monitors the wellbeing of the wildlife within the area, intervening when necessary. A major focus for the department is caring for the eastern black rhino that were translocated in 2019, and the associated infrastructure.

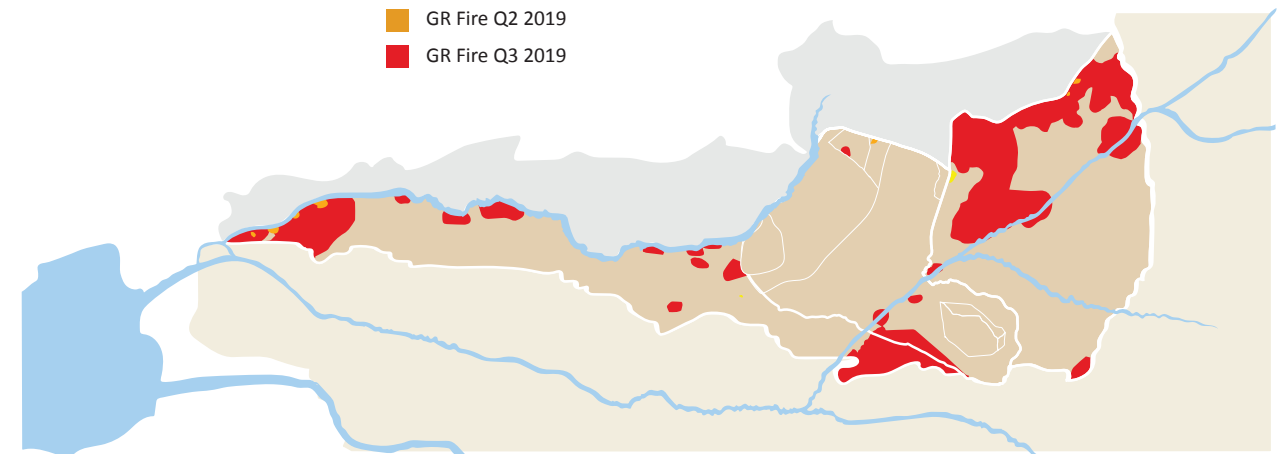


The great wildebeest migration © Sacha Specker for Black Bean Productions

### ENDANGERED SPECIES MANAGEMENT

The Rhino Intensive Protection Zone is a 276-hectare area in which three black rhino are currently residing: Laikipia, translocated from the UK in 2007; Eric, translocated from San Diego Zoo in 2018; and Zaituni, an orphan rescued by TANAPA in November 2019. The Grumeti Fund in collaboration with its government partners plans to release all three black rhino into the wider Serengeti ecosystem as soon as possible.

- GR Fire Q1 2019
- GR Fire Q2 2019
- GR Fire Q3 2019



### CONSERVATION STATS

- 21** wildlife rescues all involving snare removals: **6 zebra, 5 elephant, 5 giraffe, 4 buffalo, 1 topi**
- 25%** of the concession **burned (80% arson and 20% controlled burn)**
- 36** km of **new road** constructed (boundary road in Ikorongo and new access road in Ikona WMA)
- 12,508** acres of the concession **cleared of alien vegetation**

The Conservation Management department is responsible for restoring and maintaining the ecological integrity of the Grumeti concessions. Our philosophy ensures that both the upliftment and upskilling of local communities is achieved in order to support the work of the department. This approach has strengthened local relationships and plays no small part in ensuring that we achieve our core conservation objectives.

**MATT PERRY**  
Conservation Manager





A bull rhino at Grumeti © Mat Goodman

**BLACK RHINO RE-ESTABLISHMENT PROJECT**

The Black Rhino Re-establishment Project commenced in 2017, and 2019 saw its biggest achievement when nine eastern black rhino were translocated from South Africa to Tanzania. This project, made possible by the Ministry of Natural Resources and Tourism and Tanzania Wildlife Management Authority, was the largest single rhino translocation in Tanzania's history.

A dedicated team of conservation professionals successfully moved the rhino, with support from translocation and veterinary specialists across Africa.

However, this complex project was not without adversity. The loss of two rhino bulls was devastating, yet despite this setback, the Grumeti Fund's exceptional efforts enabled the project to continue with commendable resilience, efficiency and care. By year end, the Grumeti concessions were home to an additional nine free-ranging rhino.



In September 2019 a breeding nucleus of nine eastern black rhino arrived at Grumeti from South Africa. © Sacha Specker



Orphan rhino calf, Zaituni © Tara Shupe



- 5** Grumeti Fund team members received critical training from Care for Wild in the caretaking of orphan rhino
- 9** translocated black rhinos now free-ranging including 4 males and 5 females
- 12** black rhino in the Grumeti concessions, 10% of the national black rhino population

"It is a huge undertaking to move rhino across borders and into Tanzania and this is just the beginning. It is the start of an extremely long commitment that elevates the regional efforts aimed at saving this species from extinction, and protecting critical landscapes like the western Serengeti for their continued survival."

**GRANT BURDEN**  
Head of Special Projects

**ZAITUNI**

The Conservation Management team rose to the challenge of an unexpected special project in 2019 when a five-month-old black rhino calf was rescued by TANAPA in the northern Serengeti. For unknown reasons she was found without her mother, and was named Zaituni, Swahili for olive. With less than 1,000 eastern black rhino left in the world, every rhino is immensely precious. The collaboration and support that the Grumeti Fund has received from the Tanzanian government as well as other organizations was invaluable and critical in saving the little rhino's life.

Four members of the Conservation Management team have become full-time caregivers, dedicating their time and compassion to caring for Zaituni and thereby helping to safeguard the future of this critically endangered species.





## RELATIONSHIPS

The Relationships department manages the public-private partnership between the Tanzanian government and the Grumeti Fund. Requiring diplomacy, dedication and diligence, this relationship is of utmost importance to the organization's mission of contributing to the conservation of the Serengeti ecosystem and the upliftment of local communities. Equally important is the maintenance of good relationships with community leaders. Other key areas of responsibility include knowledge sharing; obtaining permits and permissions for moving wildlife, aerial support and essential infrastructure development; overseeing legal processes; and managing the Human-Wildlife Conflict Mitigation Unit.

"You cannot be successful in the sector of wildlife conservation without involving the local communities that surround those areas. The strong and long-lasting building of relationships with local communities is vital to ensuring that the ecosystem is safe for this generation and for those to come."

**AMI SEKI**  
Relationships Manager



### KNOWLEDGE SHARING

The Relationships department focuses on letting government partners and other stakeholders know who the Grumeti Fund is, what it does, where it's located, why it is pursuing wildlife conservation and what the benefits of wildlife conservation can be to the local communities and to the nation as a whole.

### LEGAL PROCESSES AND PERMISSIONS

Essential to combatting poaching is the work being done to ensure that court cases pertaining to the illegal extraction of natural resources are carried through with the proper evidence and witnesses. On the other side of the coin, in order for the Grumeti Fund to carry out various projects also calls for community support and government permissions. To achieve this in 2019 required the attendance of **36 off-site meetings**, the hosting of **14 events**, **61 official visits**, and **34 film screenings**.

### HUMAN-WILDLIFE CONFLICT

Human-Wildlife Conflict continues to be one of the biggest issues facing the area and it impacts all Grumeti Fund departments. The Relationships team manages what is known as the Human-Wildlife Conflict Mitigation Unit, a task force doing their utmost to protect villagers from negative wildlife interactions within community land and thus protecting the wildlife. In 2019, the Human-Wildlife Conflict Mitigation Unit attended to a total of **279 incidents**, involving **6 species** of problem animals across **28 villages**.

"If, at the very least, this fence can significantly reduce human-wildlife conflict, especially elephant crop damage and lion livestock killing, then we are accomplishing a great deal. With good maintenance and integrated follow up to fence breeches, the fence will prove to be an invaluable option to mitigating human-wildlife conflict."

**NICK BESTER**  
Special Projects Manager



### RELATIONSHIP STATS

- 21** Government Permissions and Permits obtained in total, including 5 for rhino translocation
- 34** film screenings conducted in 12 villages in the Serengeti and Bunda districts on wildlife conservation and female genital mutilation
- 99%** response rate by the Human-Wildlife Mitigation Unit
- 103** poachers convicted
- 279** Human-Wildlife Conflict incidents involving 6 species of animals in 28 villages

### A FENCE TO MEND RELATIONSHIPS

In an effort to curb human-wildlife conflict, over 60km of fence is currently under construction along the northern boundary of the reserve. On behalf of the Tanzanian government and local communities the Grumeti Fund is constructing over 60kms of fence along the northern boundary of the reserve in an effort to curb human-wildlife conflict.

In order to assess its efficacy and impact, the organization is also engaged with TAWIRI to collect and analyze data regarding the fence's impact on both people and wildlife.

A key focus of the project is community sensitization and the best methods for collaboration on the maintenance and caretaking of the fence.

At the end of 2019, Phase One of the fencing project had begun with the completion of **11km of fence**. This initial phase is the construction of a three-strand electrified fence with outriggers to deter elephants from exiting the protected area. Smaller species such as wildebeest can still move between the two areas.



Boundary road and fence between the protected area and community land © Noel Mbise



## PARTNERS

### PRINCIPAL PARTNERS

#### Tanzanian Wildlife Management Authority (TAWA)

The Tanzanian Wildlife Management Authority and the Grumeti Fund work in partnership to conserve the Grumeti concessions. The co-management agreement includes decision making surrounding the wildlife and habitat of the area, and overseeing activities such as the black rhino re-establishment project, wildlife wellbeing and law enforcement.

#### Singita

Singita is the Grumeti Fund's sole eco-tourism partner. The low-impact and exclusive tourism carried out by Singita creates opportunities for people from around the world to learn and experience the beauty of the Grumeti concessions, shining a light on conservation and community development.

#### African Community and Conservation Foundation (ACCF)

The African Community and Conservation Foundation is the Grumeti Fund's fundraising partner in the United States. The organization operates a 501(c)(3) non-profit through which all US-based Grumeti Fund donors can make tax-deductible donations.

#### TAWIRI

Tanzanian Wildlife Research Institute contributes significantly to the work that the Grumeti Fund is doing to care for wildlife and implement research projects such as elephant collaring.



© Roshni Lodhia



© Sacha Specker for Black Bean Productions

#### Vulcan, Inc

The Seattle-based organization continues to be a key partner of the Grumeti Fund. Using technology to enhance conservation practices on the ground has transformed not only the way the Grumeti Fund operates, but how conservation is carried out across Africa.

#### Raizcorp

The Grumeti Fund partners with the South African business incubator to provide business support for budding entrepreneurs, offering them a platform that fosters learning, and guidance that can be translated into business success.



© Scott Ramsay

## PARTNERSHIP HIGHLIGHTS



© Ross Couper

#### Malilangwe Trust

The Grumeti Fund's sister project in Zimbabwe holds and shares invaluable knowledge on black rhino monitoring best practices as well as game capture and immobilization, all of which has proven critical to work carried out in Grumeti in 2019.

#### Stanford University

In 2019, the Grumeti Fund launched a new partnership with the Stanford University Program for Conservation Genomics, the recipients of the inaugural Black Rhino Research Fellowship. Together the organizations are working to better understand the influence of various factors on the translocation success of eastern black rhinos – a research topic with wide relevance to continued efforts to re-establish the species across its former range.



© Mike Sutherland



© Robyn Els

#### Colorado State University (CSU)

Over the last three years, the relationship between the Grumeti Fund and the Wittemyer Lab at CSU has been an integral part of the successful elephant collaring program, with CSU advising on collaring best practices and study design, as well as collaborating on novel assessments of elephant crop raiding patterns and behavior.

© Ross Couper



#### Endangered Wildlife Trust

In 2019 EWT conducted two poison management courses for team members from Grumeti Fund, TAWA and TANAPA, educating them on the identification, response and prevention of wildlife poisoning in the Serengeti.

#### Care for Wild

In November 2019 a 4.5-month-old rhino calf was found in the Serengeti without its mother. She was brought to Grumeti with a small chance of survival. Care for Wild, a wildlife orphanage in South Africa with over 50 orphaned rhino, graciously shared information and their experience with the Grumeti Fund's team of newly-appointed rhino caretakers. With this guidance and 24/7 assistance, including sending several people from their team in South Africa to Grumeti, the rhino calf survived.



© Beezie Burden

#### Concordia Language Villages

The partnership with Concordia Language Villages commenced in 2017 and has grown annually, educating more students and teachers each year. The comradery, care and charisma that the Concordia team shares is palpable. This program, the first of its kind in Tanzania, has created lasting change through a dynamic teaching style that increases students' English language capabilities, setting them up for success in secondary school and beyond.

#### ASCT

The American Society for Canine Trainers has been training the Grumeti Fund's Canine Unit since 2017. They have enabled the team to become world class handlers and now trainers, making them one of the most skilled canine units in Africa today.





Serengeti Girls Run © Ross Couper

## CONNECT

### SAFARIS WITH A PURPOSE

Conducted in partnership with Singita, Safaris with a Purpose are up-close and personal experiences that offer a way for donors to become a part of the work being done on the ground while raising much needed funding for key projects. In 2019, the Grumeti Fund hosted three Safaris with a Purpose.

The Serengeti Girls Run raised enough funding to enable the organization to cover all expenses associated with community development projects focused on women and girls. Other Safaris with a Purpose focused on understanding rhino translocations and monitoring, and putting replacement collars on key elephants, raising significant funding for these ongoing projects.

### 2020 SAFARI WITH A PURPOSE DATES

**27 October – 1 November**  
Serengeti Girls Run

**4 – 8 November**  
Become a Grumeti Fund Scout

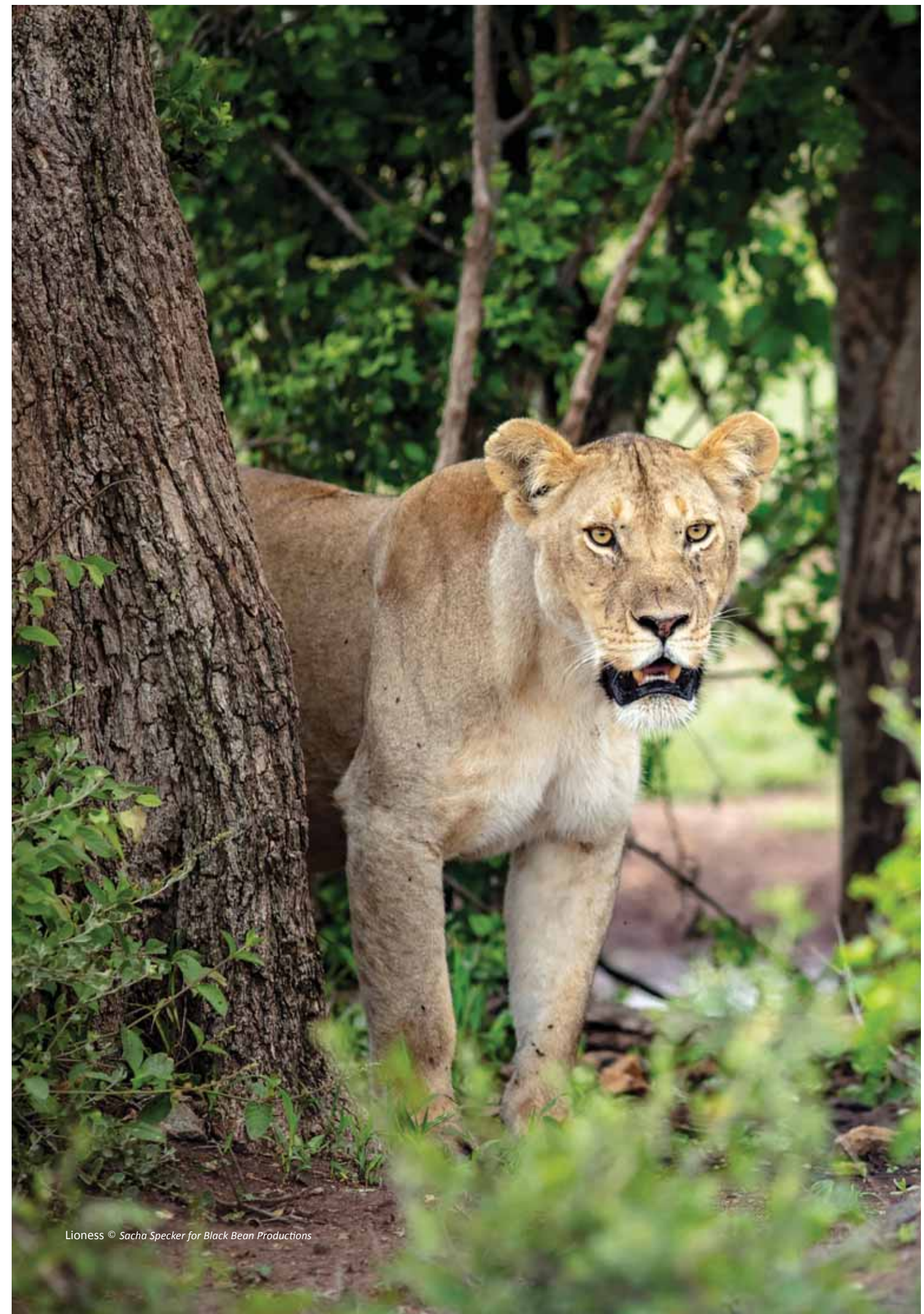
email [info@grumetifund.org](mailto:info@grumetifund.org) for more information



Elephant under sedation being fitted with a remote download GPS collar © Beezie Burden

“Storytelling has the power to transcend boundaries, drawing people to projects and places outside of their everyday lives. Our goal is to bring the work of the Grumeti Fund to life through these stories, but also through once-in-a-lifetime knowledge sharing opportunities, including Safaris with a Purpose.”

**BEEZIE BURDEN**  
Head of Communications



Lioness © Sacha Specker for Black Bean Productions



## DONOR LEVEL CATEGORIES

## Platinum Donor

\$100,000+

Aqualia International Foundation Ltd.  
 Steve and Denise Adams  
 Bestseller A/S  
 Bently Foundation  
 Generation Capital  
 The Glen A. Taylor Foundation  
 Kent and Boska Greenawalt  
 Brandon Hendelmen  
 Paul and Sonia Jones  
 Ruth Mutch  
 PaulCorp Investments Inc.  
 Anders and Anne Povlsen  
 Oscar Schafer  
 Stadler Family Charitable Foundation  
 Vulcan Inc  
 Jake Weinig

## Silver Donor

up to \$9,999

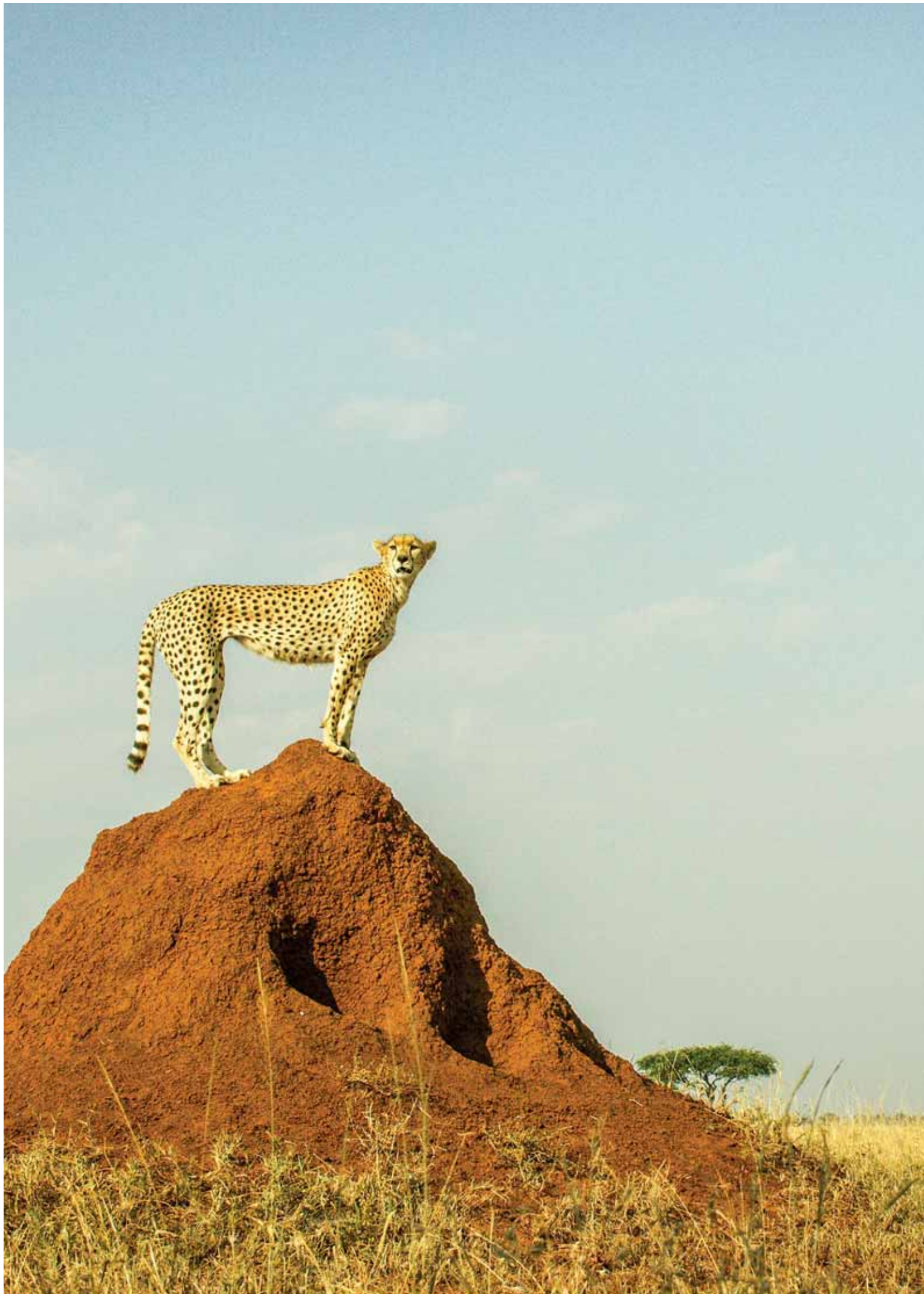
Keith Adams  
 Mariana Aisenson  
 Peter Ajayi  
 Laura and Whit Alexander  
 Lynne Alexander  
 Jaclyn Aliperti  
 Jil Aliperti  
 Lauren Alsop  
 Amanda Carpentier Alting  
 Sarah Anderson  
 Timothy Anderson  
 Susan Andrzejewski  
 Anonymous  
 Anonymous  
 AJ Arena  
 Alex Arens  
 Yordanka Atanasova  
 Annie Barrow  
 Tom Bartholomew  
 Maggie Barton  
 Addie Bell  
 John Belluomini  
 Alexa Bennett  
 David Bieber  
 Jeremy Bieuron  
 Big Bang Beverages, LLC  
 Big Cat Rescue Corp.  
 Jen Birch  
 Seth Birkan  
 Bryan Blevins  
 Deborah Barnet Brandt  
 Lanier Brannen  
 Victoria Bravo  
 Jackie Breckenridge  
 Leila Brewster  
 Betsey Brown  
 Daniel Brown  
 Linda Brown  
 Bryan Buckley  
 Mauricio Buenaventura  
 Irina Bunda  
 Ray Burns  
 Business Impact Group, LLC  
 Mark Butler  
 John Butler-Adam  
 Bradley Cain  
 Michelle and Grant Campbell  
 Xavier Cano  
 Lisa Carey  
 Casey Carl  
 CyrAnn Caslte  
 Jess Castro  
 George Cawman  
 Elisa Chacon  
 Marge Chamberlain  
 Kristina Chapchay  
 Robert Thomas Cherney  
 Joan Childs  
 Penelope Jane Childs  
 Brigitte Church

Lauren Tulp Cichocki  
 Mehmet Milhan Cizmeci  
 Julianne Classey  
 Julie Coles  
 Jeremy Collier  
 Katherine Comartin  
 Kristen Cord  
 Lynn Corkin  
 Peter Corkin  
 Stacey Costolnick  
 Lindsay Couper  
 CRAVE  
 Emily Croak  
 Kyla Cunningham  
 Debra Curley  
 Currie & Co Travels Unlimited  
 Kathleen Currie  
 Catherine L. Czajkowski  
 Julia Da Silva  
 Tory Dalena  
 Hwang Eui Dan  
 Vibha Dania  
 Helene Danielson  
 Shannon Davis  
 Marcos De Moraes  
 DeepMind  
 AnneMarie DeJong  
 Mark Anthony Delahoussaye  
 Alice Dennard  
 Christopher Denninger  
 Mary Jo Denninger  
 Betty Dent  
 Phylis DeRose  
 Christian Dietrich  
 Louis and Gerardo Dimitracopoulos  
 Deborah Director  
 Linda Dobbas  
 Megan Dohm  
 Lisanne Dorion  
 Keith Douglas  
 Mark Drexler  
 Johnathon Earle  
 Claire Eastwood  
 Javier Echeopar  
 Charles Eide  
 Hanan Emad  
 Julie, Colin and Fon Emerson  
 Empowers Africa  
 Louise English  
 Jonathan and Laura Epstein  
 Kent Erickson  
 Casey Ann Ernstes  
 Kenneth C Ernstes  
 Michael Ernstes  
 Richard Ernstes  
 Evereve, Inc.  
 Explore, Inc.  
 Robert Faith  
 Erica Faske  
 Renato Fassbind

## Gold Donor

\$10,000 - \$99,999

John Arscott Family  
 Banovich Wildscapes Foundation  
 Bama Green Conservation  
 Diane Brierley  
 Donna Brierley  
 Gary Cantor  
 Kayla Douglas  
 Michael and Catherine Douglas  
 Eastern Computer Exchange Inc.  
 Elephant Cooperation  
 The Randy and Donna Friedman Charitable Fund  
 Ashton Grimes  
 Ryan Gutzmer  
 Hayley and Tyler Hubbard  
 Christ and Diane Joest  
 The Karsh Family Foundation  
 Manitou Fund  
 Lee McGettigan  
 Elizabeth Morony  
 C. Ashton Newhall  
 PGF Family Corp  
 Bob and Cheryl Rabbitt  
 Rechler Philanthropy, Inc.  
 Remington  
 Terry Rockstad  
 Pippa Schou  
 Mari Sinton-Martinez  
 Taryn Stejskal  
 The Geili Revocable Trust  
 Mary Jean Tully  
 Vista Outdoors  
 Sandi Young





## Silver Donor continued

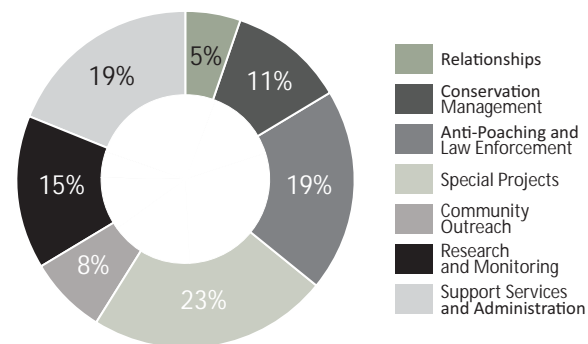
Kate Featonby	Anne Hamper	Elysse Killin	Barbara Mifkovic	Sarah Raoufian	Marilee Stevens
Don Felder	James Hamper	Giles King	Judith Miller	Bruce Raskin	Ros Stockdale
Andrea Ferry	Joy Hampton	Robin Kirk	Kristina Miller	Francis S Rath	Alexandra Stockton
Tiffany Figueiredo	Jeff Hanley	Jill Kirkpatrick	Rachel Miller	Daniela Ratner	Rob Strachan
Nicole Filippi	Amber Hansen	Kara Kleindienst	Ana Millet	Victor Ratner	Jeffrey Strauss
Nicla Fiorentino	David and Terrie Hansen	Kathryn Klemenchich	Meagan Minyard	Stuart Reay	Marty Struckhoff
Gillian Fish	Darla Harbaugh	Aaron Koblin	Desiree Miyada	Zuard Renkey	Zeldie Stuart
Chuck and Rhonda Fletcher	Laurentius Harrer	Diane Domeyer Kock	Cory Moelis	Rachel Ribar	Valerie Stull
Caitlin Flynn	Susanne Hatje	Michelle Koen	Aisha Mohammed	Amelia Richards	Juliet Sue
Brady Forseth	Donna Haugland	Chiharu Koizumi	Katie Lee Mohammed	Pam Richardson	Paul Summerhayes
AKOIO Foundation, INC.	Andrew Haynes	Nicholas Kourides	Taina Monte	Jessica Robertson	Joseph Jerome Sweere
Children's Cancer Research Fund	Elisa Hazlewood	Nocholas Kourides	Vida Montecillo	Kim Robertson	Rebecca Thiel
Currie and Co. Travels Unlimited	David Heller	Robin Krueger	Garrick Montenegro	Matt Robetson	John and Eileen Tierney
Charitable Fund	Melony Helms	Joanna Kuflik	MG Montilla	Carly Robinson	Erin Trager-Kusman
Gusti Brandt Foundation	Michael and Karen Helms	Susan Kumleben	Taylor Moor	Carlos Quereda Rodriguez	David Turner
Milroy Family Foundation	Michael Helms	Bronwyn Laing	Nina Morato	Jennifer Rogers	Devon Jansen van Vuuren
Williams Family Charitable	Steven Helms	Marco Lancioni	Michael Moth	Jennifer Rosa	Linda Ventresca
Foundation	Gary Hender	Tara Lano	Brennan Moxham	Jessica Rosen	Michael Verola
Zicarelli Foundation	Allison Hendon	Margaret Lasa	Heiko Mueller	Renee Rosettenstein	Rhonda Vetere
Candace France	Maria Hendon	Randal and Jeanine Leisegang	Tera Muellerleile	Lydia Rouse	Kelsey Vogt
Sheri Frend	George Henninger	Scarlett Leiva	Sarah Muller	Debbie Rowles	Daniel Volker
Wilson Family Fund	Jill Henry	Mike and Cindy LeSage	Trust for Conservation Innovation	Christen Rowse	Wendy Beck von Peccoz
Samantha Gaetano	Amy Hibel	Daniel Levin	DBA Multiplier	Michael Ruotolo	Denise Vouri
Gabe Gallaher	Kevin M Hoey	David Gary Levin	Minoru Nakamoto	Liz and Ian Russell	Michael Walden
Katie Galvin	Reid Hollen	Steven Arnold Levin	Mary Nash	Carmie Saldana	Bashar Wali
Amanda Gamez	Barrett Hollo	Andy Levine	Hermann and Lise Naude	Salesforce.org	Brent Wallace
Andrew Gast	Michael Holtz	Liberal Arts Institute	Chelsie Angel Neal	Idalia Salsamendi	Peyton Wallace
Art Gebhardt	Debra Homan Homan	Bailey Limyansky	Ross Neubauer	Emily Sanchez	Alex Wang
Dennis Geiler	Anne Homayounfar	Frank and Donna Louw	Penny Anita Newquist	Yeiny Mirabales Sanchez	Susan Warrington
Elizabeth Gentil	Mary Hoppe	David Lowy	Raymond Noppe	Emily Sarazin	Chris Waters
Nicole Gerber	Adam Joseph Hoppes	Rachel Luckhoff	Chelsea Nothard	Stephanie Sargent	Tim Weiland
Christine Gerhart	Herve Houdre	David Lumley	Stephen J O'Shea	Scott Saufer	Amanda Weiss
Kristi L Gibbons	Anne Howe	Sophia M Luna	Cindy Olivieri	Caroline Scherneck	David Wernas
Alex and Sue Glasscock	Linda Hoyt	Lauren Machowsky	Jaime Orlando	Michael Schertz	Melissa Westley
Ashley Glazer	Kim Hunt	Claire Maehr	Shauncey ORourke	Carol Grosslight Schiewe	Kristianne and Ken Westphal
George Anna Gleason	Diana Hutton	Gavin Maitre	Rachel Pantoja	Paul and Wendy Schmidle	Steven Westphal
Elmer Wesley Gliaspie	Skye Charly Indy	Peter Manning	Maria Paradisis	Karla Schmidt	Robert and Sandy Whann
Meghan Glotfelty	Shireen Irani	Nicole Manziak	Michael and Christina Parlato	Leslie Schutt	Robert J Whann, IV
Catherine Goodman	Craig and Lynn Jacobson	Brennan Marilla	Sarah Paterson	Gavin Searle	Catherine Garoupa White
Peter Goodman	Kay Jacobson	Craig Martek	Morton Patty	Melissa Seidenberg	Joyce Wilcox
Sally-Anne Goodman	Linda Jean	Richard and Annie Mastain	Eloise Paul	Kyle Seltzer	Clark Wilkes
Mark Grace	Gayle Jennings	Richard Kent Mastain, Jr	Janet Pearse	Menanteau Serfontein	William William
Elizabeth Graesser	Patricia Jimenez	Jessica Mathews	Joyce Peck	Dauida Serrani	Elizabeth Williams
Lisa Gramlich	Didi Johnson	Peter J and Kelly Mattson	Sergio Pellegrini	Paola Serrano	Frances Williamson
Florencia Grassi	Jeno Johnson	Peter S and Linda Mattson	Christina Perrotta	Gordon Shank	Robyn Willmot
Allison Green	Robert Johnson	Howard McCall	Tracy Peterson	Daniel Sheard	Beverly and George Wilson
Janet Green	Lucy Jones	John Arnold McChesney	Pfizer	Barry Alan Sholem	Lance Wilson
Peter Greig	Robert Jones	Bruce McDonald	EJF Philanthropies	Diane Short	Caroline Wilson-Kent
Grey Search and Strategy	Jessica Jones-Hughes	R Bruce McDonald	Taylor Phillips	Leonara Sichel	Michelle Wolfman
Sara Griffin	Karen Jordaen	Lisa McEllistrem	Jean Pickard	Michael Silva	Worklaw Worklaw
Lauren Grubbs	Hanneke Joustra	Catharine MCGauley	Kristen Korey Pike	Emily Simo	Jingyang Wu
John Guenveur	Manda Kalimian	Christin Mckay	Marlies Ploeger	Kristen Snyder	Amy Youngstrom
Melissa Gulotta	Renah Kang	Regan McManus	Phyllis Polaner	Steve Snyder	Kelly Zachrich
Patty Gulsvig	Franny and Walter Kansteiner	Alison McNally	Amanda Poses	Joleen Soderberg	Samantha Zachrich
Anna Gustafson	Abby Kastin	Ashley Melchiorre	Heather Pritchard	Nadia Stanfield	Frank Zambrelli
Lianna Gutzzeit	Mark Kelly	Liana Merriman	Betty Jo Profeta	Morgan Stanley	Brittany Zeinstra
Sarah Halpern	Noreen Kelly	Marla Pearlstein Messing	Megan Pulvermacher	Sharon Steadman	Jason Zimmerman
James Brian Hamann	William Kennedy	Samir Mian	Maria Ramos	Judy Stein	



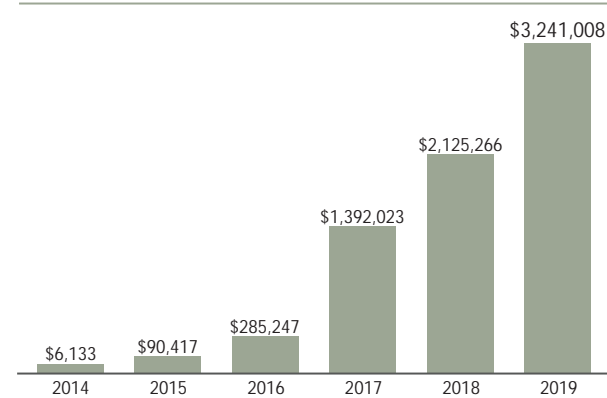


Zaituni and two of her caretakers © Tara Shupe

### Department financials



### Grumeti Fund donations (2014 – 2019)



\* figures represent all external funding



Grumeti Fund senior and middle management alongwith the canine unit. © Atara Film

## THANK YOU

The Grumeti Fund is grateful to all of its donors, supporters and partners for their generosity. Through your ongoing support and donations, the Grumeti Fund is able to create lasting change for communities and wildlife alike.

### STAY UP TO DATE

Information on the Grumeti Fund can be found on the website: [www.grumetifund.org](http://www.grumetifund.org) or through social media @ [@grumetifund](https://twitter.com/grumetifund).

“Everything the Grumeti Fund does is about building collaborations and partnerships to ensure the long-term survival of not only the Grumeti concessions but of the Serengeti ecosystem.

Team members here are driven by a passion and a belief that this is the reason they were put on this earth; to contribute to something much bigger than themselves; something unique that future generations will get to appreciate and enjoy.”

**STEPHEN CUNLIFFE**  
Executive Director



