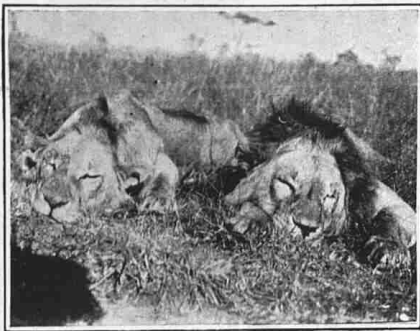
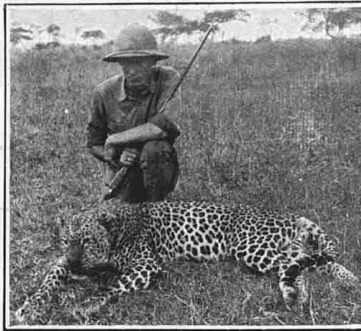


Big Game Hunting in the African Colony of Kenya

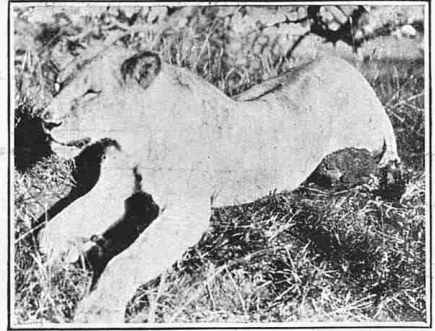
FILMING BEASTS OF PREY IN THEIR NATIVE WILDS



THE SPOILS OF THE CHASE: TWO FINE LIONS



A LEOPARD



A LIONESS

SINCE the termination of the war, big game hunting has revived in Kenya Colony, where finer specimens of lions, leopards and pachyderms are obtainable than in any other accessible hunting-field. The pictures on this page show a few of the

prey bagged within seventy to eighty miles of Nairobi, in the Aki River district. An American expedition recently visited this field for the purpose of obtaining cinema films, and from their motor-car, running at full speed over the veldt, carnivora were

frequently attacked. On one occasion, one noble King of the Forest, charging the car, landed on the hood, but was quickly hurled to the ground by the momentum of its strange invincible enemy. Mr. Geo. Stuart Watt, whose home is in the wilds, accompanied the expedition on this tour, and is seen at the back of one or two of the prey. He managed to kill several lions one night by lying within a thorny stockade, outside of which he had placed a zebra as bait. Shots were fired in the



AMERICAN CAR OUT FOR ANIMAL PICTURES FOR FILM

direction of the sound of crunching of bones; the feeders were startled at the noise which so unexpectedly disturbed them, and while a group of lions roared and sprang towards the hedge, more shots were fired and two of their number were felled.



A RHINOCEROS KILLED WITHIN 60 MILES OF NAIROBI



"Beautifully cool and sweet smoking."

PLAYER'S Navy Cut Tobacco

PACKED IN VARYING DEGREES OF STRENGTH TO SUIT EVERY CLASS OF SMOKER.

Player's Gold Leaf Navy Cut	-	PER OZ.
Player's Medium Navy Cut	- -	1/-
Player's "Tawny" Navy Cut	-	
Player's "White Label" Navy Cut		10¹/₂d.

Also PLAYER'S NAVY CUT DE LUXE (a development of Player's Navy Cut). Packed in 2-oz. and 4-oz air-tight tins at 2/4 and 4/8 respectively.

PLAYER'S Navy Cut Cigarettes

Have a world-wide reputation. They are made from fine quality Virginia Tobacco and sold in two strengths—MILD AND MEDIUM.

MILD (Gold Leaf)	MEDIUM
100 for 5/10 ; 50 for 2/11	100 for 4/8 ; 50 for 2/5
24 for 1/5 ; 12 for 8¹/₂d.	20 for 11¹/₂d. ; 10 for 6d.

JOHN PLAYER & SONS, NOTTINGHAM.

Branch of The Imperial Tobacco Co. (of Great Britain and Ireland), Ltd. P 886

Grant's



"STAND FAST" SCOTCH

ALSO GRANT'S "LIQUEUR" AND GRANT'S "BEST PROCURABLE"

WM. GRANT & SONS LTD., Distillers, Contractors to H.M. Government.
 Sole Proprietors—The Glenfiddich and Balvenie Glenlivet Distilleries.
 EXPORT OFFICE: 16 CARLTON PLACE, GLASGOW.
 LONDON AGENTS FOR GRANT'S "LIQUEUR" SCOTCH: MESSRS. HEDGES & BUTLER, LTD.
 WINE MERCHANTS TO H.M., THE KING, 153 REGENT STREET, W. 1