

ZOONOOZ[®]

published monthly since 1926 by the Zoological Society of San Diego, Inc.

APRIL 1972 • Vol. XLV—No. 4

IN THIS ISSUE

Keeping A Frog Alive and Happy.....	4
Around the San Diego Wild Animal Park.....	12
Around the Zoo.....	14
Ted and Pat Derby's	
"Orphans of the Wild"	
Summer School.....	17
Membership Preview.....	18
San Diego Wild Animal Park Publication.....	18
Give and Let Live!.....	18

Edna Heublein, *Editor*

Kathleen Rutherford,
Subscription & Membership Manager
Tel. 234-5151, Ext. 41

PHOTOGRAPHS

Unless otherwise accredited, San Diego Zoo photographs.
Ron Garrison, photographic supervisor, F. Don Schmidt,
photographic technician. For prices of enlargements
of ZOO photographs, write Box 551, San Diego 92112,
or call the Photo Lab: Tel. 234-5151, Ext. 49.

Front

Solomon Island Skink
Corucia zebrata
Solomon Islands

Inside front

Maned Wolf
Chrysocyon brachyurus
Brazil, Paraguay, E. Bolivia,
Uruguay & N. Argentina

Inside back

Leopard Lizard
Crotaphytus wislizeni
SW United States &
NW Mexico

Back

Grand Canyon Rattlesnake
Crotalus viridis abyssus
Grand Canyon, Arizona
F. R. Gehlbach Photo

Circulation 39,000. Second class postage paid at San Diego, California, U.S.A.
Single copy 50c. Subscription direct order only: \$4.00 per year, \$10.00 for three years.
Foreign, including Canada & Mexico, add \$1.00 per year.
ZOONOOZ is included in every Zoological Society of San Diego membership:
Dual \$12.00, Single \$10.00 per year. Prompt Renewal: Dual \$10.00, Single \$8.00.

Membership—Subscriber Service: Please allow 5 weeks for delivery of membership cards. Include address label from your ZOONOOZ for address change.

Copyright © 1972 Zoological Society of San Diego, Inc. All rights reserved.
Title "ZOONOOZ" Reg. U.S. Pat. Office.

Address—Box 551, San Diego, California 92112
Founded October 6, 1916, by Harry M. Wegeforth, M.D.,
as a private nonprofit corporation.

The zoological collection includes 5,441 mammals, birds, reptiles—
1,466 (sub) species, excluding domestic forms, as of December 31, 1971.
The garden in Balboa Park exhibits 4,887 animals, comprised of 1,387 (sub) species.

BOARD OF TRUSTEES

President
Anderson Borthwick
First Vice-President
H. Sheldon Campbell
Second Vice-President
Robert F. Smith
Secretary
Lt. Gen. V. H. Krulak, USMC, ret.
Treasurer
Ivor de Kirby
Trustees
J. Dallas Clark
E. Minton Fetter M.D.
John P. Scripps
Robert J. Sullivan
John M. Thornton
Albert Eugene Trepte
Milton G. Wegeforth
Honorary Vice-President
James S. Copley
Trustees Emeritus
Howard L. Chernoff
Carl L. Hubbs, Ph.D.
Lester T. Olmstead
Counsel to Trustees
R. Sherman Platt

ZOO STAFF

Director
Charles R. Schroeder, D.V.M.
Director Emeritus
Belle J. Benchley
Children's Zoo
John W. Muth, Jr., Supt.
Construction & Maintenance
Harold R. Barr, Director
N. Kendall Marvin, Supt.
Charles Faust, Designer
Ernest B. Chew, Horticulturist
Curators
James M. Dolan, Jr., Ph.D.—Birds
Clyde A. Hill—Mammals
Kenton C. Lint—Birds
George H. Pournelle, Ph.D.—Mammals
Jerry H. Staedeli—Reptiles
Fiscal
Ella LaVerne Hoover, Controller
Health
Lynn A. Griner, D.V.M., Ph.D., Director
Lester S. Nelson, D.V.M.
Charles J. Sedgwick, D.V.M.
Information & Education
Frederick J. Childress, Director
William J. Seaton, P.R. Manager
Charles L. Bieler, Group Services Mgr.
Personnel
Patrick O'Reiley, Director
Public Services
Arthur Oates, Director
V. P. Byrne, Ass't. Director
Research Associate
Kenhelm Stott, Jr.
Security
Robert H. Kerr, Chief

STANDING COMMITTEES

Building & Grounds
Robert J. Sullivan, Chairman
J. Dallas Clark
Raymond D. Colbert
E. Minton Fetter M.D.
Glenn A. Rick
David Roberts
Edward T. Simms, Jr.
A. E. Trepte
Ralph J. Virden
Milton G. Wegeforth
Ross D. Wilson
Education
H. Sheldon Campbell, Chairman
Robert H. Burgert, Ed.D.
Barbara Dawson
Stanley de Treville
Clifford T. Fredrickson
John K. Gessel
Robert F. Gray
Evelyn R. Hauser
Richard Schwenkmeyer
Larry H. Upp
Robert A. Wade
Exhibit
Lt. Gen. V. H. Krulak, Chairman
Carl L. Hubbs, Ph.D., V-Chmn.
H. Sheldon Campbell
Edwin T. Coman, Jr.
Pauline des Granges
Roy Drew
E. Minton Fetter, M.D.
George L. Gildred
C. Wesley Hall
Paul L. Hoefler
Lt. Col. Irving Salomon, USA ret.
Fred Sharp
Finance
Ivor de Kirby, Chairman
Lt. Gen. V. H. Krulak
Robert J. Sullivan
A. E. Trepte
Legal
R. Sherman Platt, Chairman
Brian J. Newman-Crawford
Public Information
Oscar J. Kaplan, Ph.D., Chairman
H. Sheldon Campbell
William L. Fox
Joseph E. Jessop, Jr.
Keith Nicholson
Betty B. Peach
Bob Regan
Marguerite Sullivan
Robert J. Sullivan
John M. Thornton
Research
Arne N. Wick, Ph.D., Chairman
Bernice M. Wenzel, Ph.D., V-Chmn.
Kurt Benirschke, M.D.
E. Minton Fetter, M.D.
Denis L. Fox, Ph.D.
Lt. Gen. V. H. Krulak
Per F. Scholander, M.D., Ph.D.
Robert F. Smith
R. D. Tschirgi, Ph.D., M.D.
Henry Walch, Ph.D.
Claude E. ZoBell, Ph.D.

Around the **San Diego**
WILD
ANIMAL
PARK

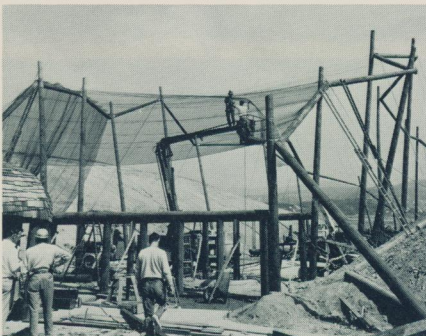
1800 acres
of "Open Space"
on Highway 78
30 miles north
of the San Diego Zoo



A general view of Nairobi Village at the San Diego Wild Animal Park before going into the final stages of construction. The Park will open to the public on May 10, 1972. In the foreground is an animal contact area and the lagoon; behind it, the structure for the rustic covered walkway (close-up, above). Starting at the left, there is the Congo River fishing village where fish traps will be lowered from the bridge and 10,000 gallons of water per minute will gush down the waterfalls; a rondavel housing restrooms, then the administration center and a merchandise bazaar-restaurant complex. Beyond are warehouses for food stuffs and supplies. On the foothills one can see sections of the five-mile monorail bed.



One of the rondavels to house transformers for the monorail.



After stringing cables for the aviary—200 feet long, 150 feet wide, and 70 feet high at maximum dimensions—vinyl-covered wire is suspended from the cables supported by pilings. There will be ample open space, nooks and niches for birds to claim as their own. Among inhabitants for the opening will be touracos, pigeons, rollers, mouse-birds, barbets, longclaws, thrushes, robin chats, shrikes, starlings, stilts, ruffs, plovers, hammerkops and gonoleks. Other species will be added as they become available.



The "car barn" for 19 monorail cars (18 passenger, 1 flatbed).

Right: The equipment on the monorail bed is used for drilling holes in the concrete for 12x1¼" anchor bolts, as well as placing and tightening the bolts to support the monorail. Below: Kifaru, a six-month-old Black, or Hook-lipped Rhinoceros, *Diceros bicornis bicornis*, took her bottle soon after arrival. She is one of Nancy Alstrum's temporary charges at the San Diego Wild Animal Park Hospital. "Kifaru," a Swahili word meaning "rhinoceros," was born August 27, 1971, at the Los Angeles Zoo. At birth she weighed 74 pounds. Kifaru will greet visitors in Nairobi Village. Additional Black Rhinos will be seen in the East African section of the Park.



Below left: The final touch was added to the monorail at a Golden "Spike" ceremony on February 18. Guest of honor, Mayor Pete Wilson (center) drove the last bolt. Harold Barr, construction director, holds the golden "spike." At the right is Charles D. McConnell, vice-president Monorail Division of Westinghouse Air Brake Company, designers and fabricators of the transportation system. In the background are two cars and a transformer rondavel. Below right: Mayor Pete Wilson (in the driver's seat) with (l to r) Zoological Society President Anderson Borthwick and Trustees Robert Sullivan and J. Dallas Clark learned about the operation of the monorail from Charles McConnell of Westinghouse.

