

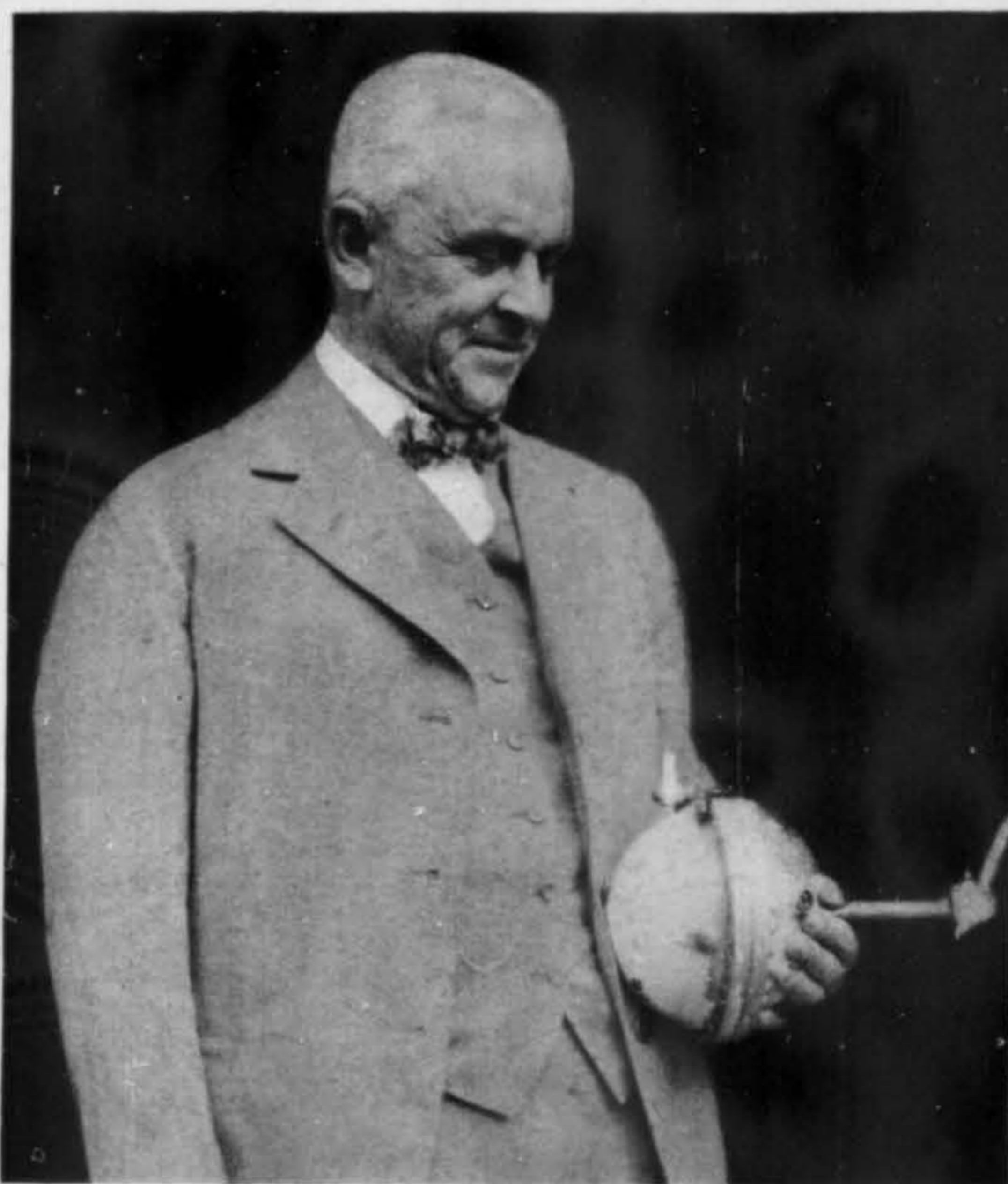
PRICE
15¢

SCIENCE REVIEW OF THE YEAR DEC 30 1930

SCIENCE NEWS LETTER

PHYSIOLOGICAL ROOM
GENERAL LIBRARY
UNIV. OF MICH.

THE WEEKLY SUMMARY OF CURRENT SCIENCE ●



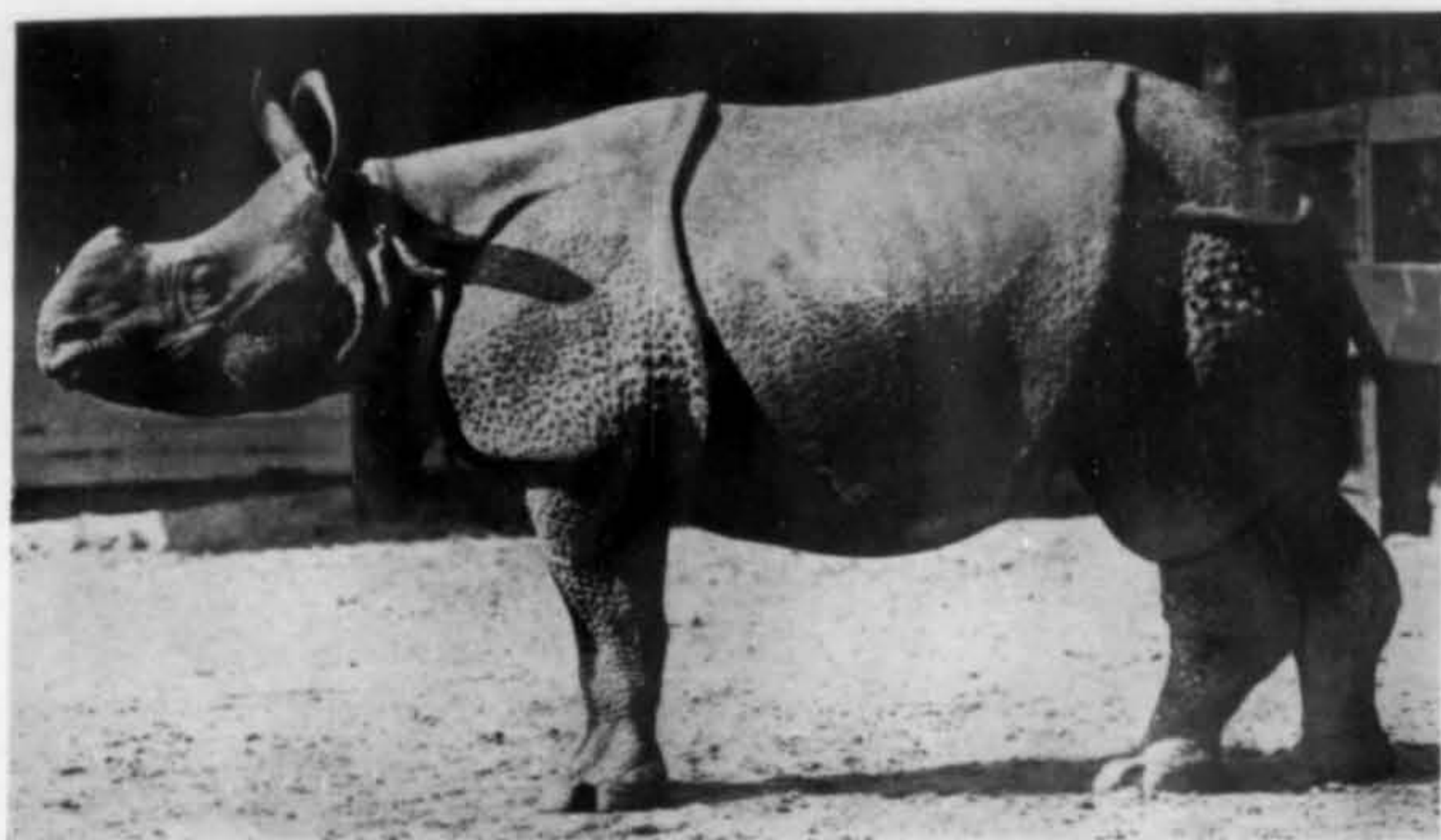
DECEMBER 27, 1930

Scientist and Leader of Scientists

See Page 406

A

SCIENCE SERVICE PUBLICATION



THE RAREST RHINOCEROS IN THE WORLD

And one of the rarest of all large animals, is now at home in the Carl Hagenbeck Zoo at Stellingen, Germany. It is the only armored rhinoceros that has ever been brought to the Occident. It comes from a protected range in the lower Himalayas, in Sikkim, Assam and Nepal. It is estimated that only 300 specimens of this animal are left alive. The armored rhinoceros resembles the one-horned Indian rhinoceros in most respects, except that its hide is studded all over with a multitude of little bony plates, making it proof against any kind of missile except a steel-jacketed bullet.

A severely streamlined railway car driven by a 400 hp. airplane engine and propeller sped more than 100 miles per hour on a straight track in Germany.

Construction progressed on the Ft. Lee 3,500-ft. span suspension bridge across the Hudson river at New York and the 1,500-ft. Mid-Hudson suspension span at Poughkeepsie.

The application of welding to steel building construction was greatly extended, the number of such buildings being increased 50 per cent.

The world's longest concrete arch bridge was built at Brest, France, with three spans, each of 612 feet.

The *Europa*, new German ocean liner, entered service and became speed queen of the North Atlantic by bettering the record of her sister ship, the *Bremen*.

The U. S. Bureau of Standards prepared for the construction of a National Hydraulic Laboratory provided for by Congress at a cost of \$350,000.

Coolidge Dam across the Gila river canyon near Globe, Ariz., a dam of unusual construction making use of multiple domes, was dedicated by the ex-president for whom it was named.

The first roller-bearing locomotive was built and put in service.

The Keenan Steam Tables and Mollier Diagram, which for the first time tabulate and graphically present the properties of steam at the higher temperatures and pressures at which it is now being used in large power plants, was published by the American Society of Mechanical Engineers.

Chicago's Merchandise Mart, said to be the largest building in the world, was completed.

The U. S. Patent Office issued 49,599 patents and accepted 117,790 applications during the fiscal year ending in June.

Construction advanced on the world's largest high pressure turbine-generator, a 110,000 kilowatt steple compound unit to operate at 1,200 pounds per square inch

pressure in the River Rouge power plant near Detroit.

The highest boiler pressure ever used in America, 1,800 pounds per square inch, was employed in a 6,000 kilowatt power plant nearing completion at Lockland, Ohio.

A radio telephone service was installed between New York and Buenos Aires, making possible the connection by radio phone of four continents—North America, South America, Europe and Africa.

The first completely welded ocean-going cargo vessel was launched at Charleston, South Carolina.

The world's first floating power plant, the *S. S. Jacona*, with a generating capacity of 20,000 kilowatts, was placed in service along the New England coast as a source of emergency power.

A new field gun mount, enabling a 75 millimeter cannon to be trained at any point in a complete circle and elevated to any angle up to the vertical, was developed by the U. S. Army.

Work began on the Rogue river concrete arch bridge in Oregon, the first bridge in America to use elastic piers.

Plans were announced for the restoration of a canal built by George Washington around Great Falls on the Potomac river as a part of the Washington Bicentennial Celebration of 1932.

Progress in the design of windowless buildings lighted and ventilated entirely by artificial means was made and plans were announced for the construction of a \$1,500,000 windowless factory at Fitchburg, Mass.

Photographic films taken by the Andrée polar balloon expedition more than 30 years ago were found with the explorers' remains and developed and printed successfully in spite of deterioration by age and exposure.

Geology and Geography

The decennial census of the United States was made, showing the population to be 122,775,046.

The most severe drought and hot season recorded by the Weather Bureau gripped practically the whole of the United States from June until mid-autumn, causing severe damage to crops and range lands and bringing new records for low water in the rivers.

A landslide destroyed part of the city of Lyons in France, taking many lives, and destroying much property.

Great deposits of fossil mammal and bird bones were found in Wyoming.

Fossils of a redwood species were discovered on St. Lawrence Island in Bering Straits, bridging the gap between previously known occurrences in Asia and North America.

Huge deposits laid down in Pre-Cambrian times were found in the Grand Canyon of Arizona.

The Polish Academy of Science announced the discovery of the complete body of an Ice-Age rhinoceros, with muscles and skin complete and in place, in the frozen soil of the district of Starunia, Poland.

SPENCER SCIENTIFIC AND EXPERIMENTAL WORKS
4503 Wolff Street, Denver, Colorado
Optical Engineering and Designing
Repairing and Special Work
Assistance in Experimental Work
Instruction in Technical and Scientific Subjects
Astronomical telescopes, reflectors, prisms, gratings, lenses, standard flats, gauges, optical instruments, supplies, patterns, castings agate work, crystal specialties, testing, and used equipment.



A New Optical Disc---for Student Use

See our exhibit at Amer. Asso. for Advance. of Science Meeting Booth Nos. 1 and 2

Diagrams made on note book paper. Disc tilted any angle by means of swivel mounting.

All essential mirrors and lenses are supplied for performing 13 experiments on reflection, refraction, focal length, index of refraction, and images by small apertures.

W. M. WELCH MANUFACTURING COMPANY

General Offices: 1515 Sedgwick St., Chicago, Ill.

Scientific Apparatus Factory and Warehouse: 1516 Orleans St., Chicago, Ill.

Furniture Factory: Manitowoc, Wis.

No. 3676

Send for circular
No. 3676 Student's Optical Disc,
with lenses, mirrors, and instructions ...\$10.00