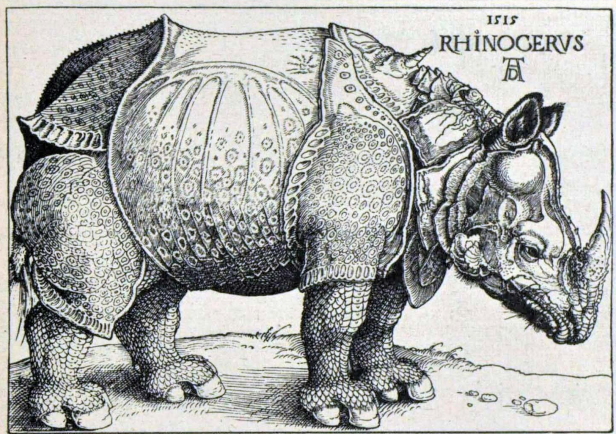


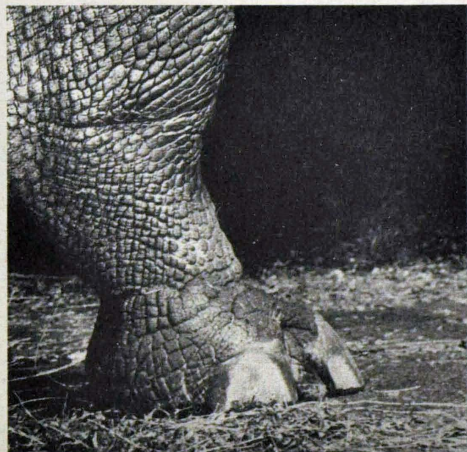
DÜRER WAS RIGHT

In 1515 Albrecht Dürer, artist of the German Renaissance, made an engraving of a rhinoceros. It looked like an armour-plated monster. But the accuracy of the artist's portrait is proved by comparison with photographs.

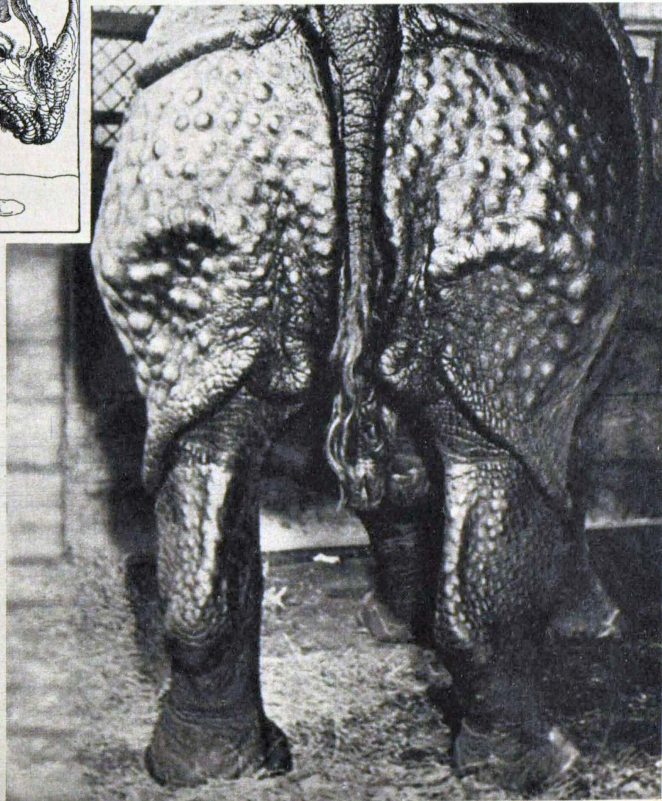


The Head That is Both Pike and Battering-ram
The only male rhino in captivity. He has shattered his horn by constantly charging the wall. His eye is as savage, his neck as heavy as when Dürer drew his ancestral portrait, four centuries ago.

A 16th Century Vision of the Rhinoceros
This rhino came to Lisbon, a present from the King of Portugal's Indian subjects. It was said to vanquish elephants in battle by ripping their bellies with its vicious horn.



The Cloven Hoof and Scaly Leg
The immense toes, the stubby leg that supports the weight of an armoured lorry, but can feel an insect settle.



The Formidable Armour of a Rhinoceros
Dürer drew it as if it had been cast in metal by the armourer. And, surprisingly, that's exactly how it looks. No ordinary bullet will penetrate that hide.