

Supplementary File

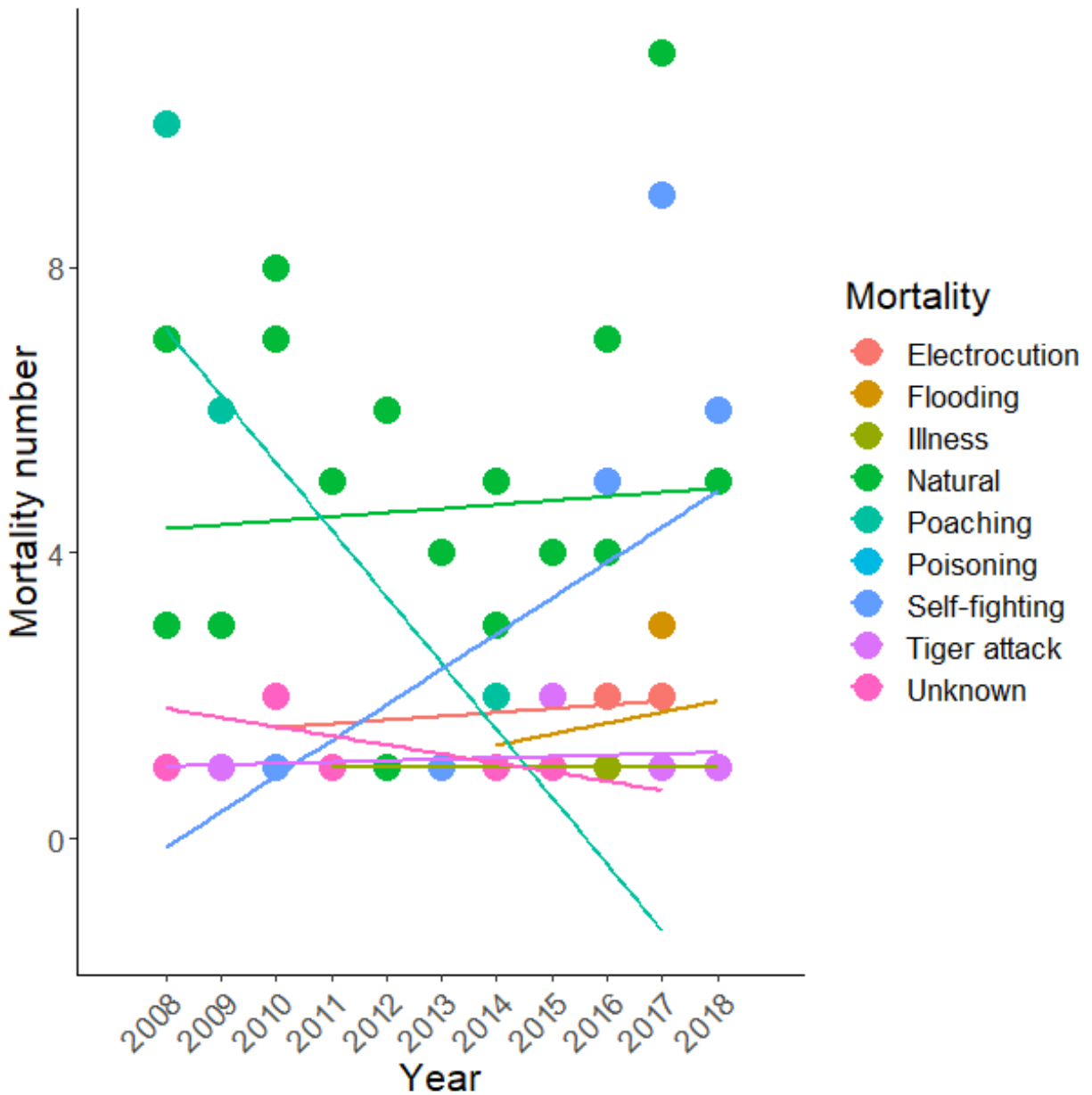


Fig SF1. Rhino mortality patterns over the years (2008-2018). Each mortality cause is presented with different color points. Mortality patterns were fitted using linear regression. Three significant mortality patterns were observed, tiger attacks and self-fighting mortality significantly increased; while mortality due to poaching significantly decreased.

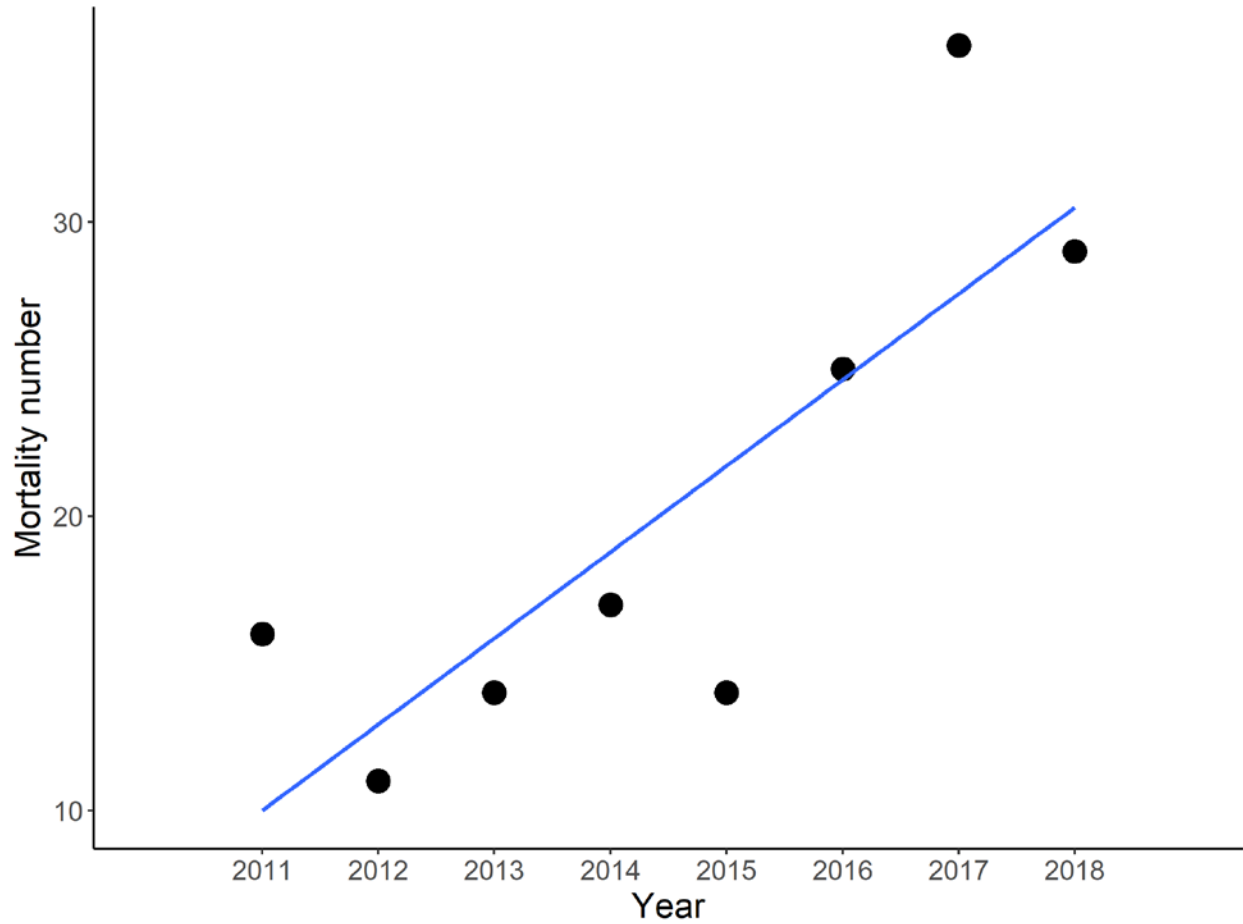


Fig SF2. Mortality cases increased significantly after 2011 ($R^2= 0.68$, $P<0.05$).

Table SF 1. Sources of data used for rhino mortality analysis in Nepal between 2008 and 2018.

(DNPWC: Department of National Park and Wildlife Conservation; CNP: Chitwan National Park; BNP: Bardia National Park; PNP: Parsa National Park).

Fiscal year/Sources	Year (AD)	File name	Open access sources
2065/2066	2008	DNPWC annual report 2065/2066	https://dnpwc.gov.np/media/files/Annual_Report_2065.066.pdf
2066/2067	2009	DNPWC	https://dnpwc.gov.np/media/files/Annual_Report_2066.067.pdf

		annual report 2066/2067	
2067/2068	2010	DNPWC annual report 2067/2068	https://dnpwc.gov.np/media/files/Annual_Report_2067.068.pdf
2068/2069	2011	DNPWC annual report 2068/2069	https://dnpwc.gov.np/media/files/Annual_Report_2068.2069.pdf
2069/2070	2012	DNPWC annual report 2069/2070	https://dnpwc.gov.np/media/files/Annual_Report_Final_DNPWC_2069-70.pdf
2070/2071	2013	DNPWC annual report 2070/2071	https://dnpwc.gov.np/media/files/Annual_Report_Final_DNPWC_2070-71.pdf
2071/2072	2014	DNPWC annual report 2071/2072	https://dnpwc.gov.np/media/files/Annual_Report_Final_DNPWC_2072_2nd.pdf
2072/2073	2015	DNPWC annual report 2072/2073	https://dnpwc.gov.np/media/files/Annual_Report_Final_DNPWC_2073-10-25.pdf
2073/2074	2016	DNPWC annual report 2073/2074	https://dnpwc.gov.np/media/files/Annual_Report_2074_colour_book.pdf
2074/2075	2017	DNPWC annual report 2074/2075	https://dnpwc.gov.np/media/files/DNPWC_Annual_Report-074-75.pdf
2075/2076	2018	DNPWC annual	https://dnpwc.gov.np/media/files/DNPWC_Annual_Report_2075.76.pdf

		report 2075/20 76	
2072/2073	2015	CNP annual reports 2072/20 73	https://chitwannationalpark.gov.np/index.php/reports/annual-reports/47-annual-report-2072-73-1/file
2073/2074	2016	CNP annual reports 2073/20 74	https://chitwannationalpark.gov.np/index.php/reports/annual-reports/48-annual-report-2073-74/file
2074/2075	2017	CNP annual reports 2074/20 75	https://chitwannationalpark.gov.np/index.php/reports/annual-reports/51-annual-report-074-075/file
2075/2076	2018	CNP annual reports 2075/20 76	https://chitwannationalpark.gov.np/index.php/reports/annual-reports/53-cnp-annual-report-2076/file
2073/2074	2016	BNP annual reports 2073/20 74	BNP (2016) Bardia National Park Annual Report. Fiscal year 2073/2074. Bardia, Nepal
2074/2075	2017	BNP annual reports 2074/20 75	BNP (2017) Bardia National Park Annual Report. Fiscal year 2074/2075. Bardia, Nepal.
Technical Report	2015	Bio. Con. E. in Nepal	https://dnpwc.gov.np/media/files/Special_Bulletin_2072.pdf
Technical Report	2017	Rhino Con. Action plan	https://dnpwc.gov.np/media/publication/Rhino_Conservation_Action_Plan_Nepal_2017-2021.pdf
Technical Report	2018	PNP manage. Plan	https://dnpwc.gov.np/media/publication/Parsa_National_Park_Management_Plan_2075.pdf
Newspaper	2008- 2018	Printed and online text	www.gorkhapatraonline.com ; www.kantipur.com ; www.setopati.com
CNP Annual Bulletin	2010- 2013	CNP Annual Bulletin	https://chitwannationalpark.gov.np/index.php/reports/bulletin-brochure
DNPWC wildlife news	2018	2075/20 76	https://dnpwc.gov.np/en/publication-detail/5/
Dissertation	2009		Prasai, A. (2009). Human-Rhino Conflict in Buffer Zone of Chitwan National Park, Nepal: A Case Study from Madi Valley (Doctoral dissertation, Department of Zoology).

Dissertation	2012		Lamsal, S. (2012). The park-people conflict in the Chitwan National Park with reference to the Asiatic one-horned rhinoceros (<i>Rhinoceros unicornis</i>) (Master's thesis, Instituttt for biologi).
Dissertation	2012		Subedi, N. (2012). Effect of <i>Mikania micrantha</i> on the demography, habitat use, and nutrition of Greater One-horned Rhinoceros in Chitwan National Park, Nepal. Dehradun: Forest Research Institute University.