

SAN DIEGO ZOO



San Diego Zoo

BALBOA PARK

San Diego, California

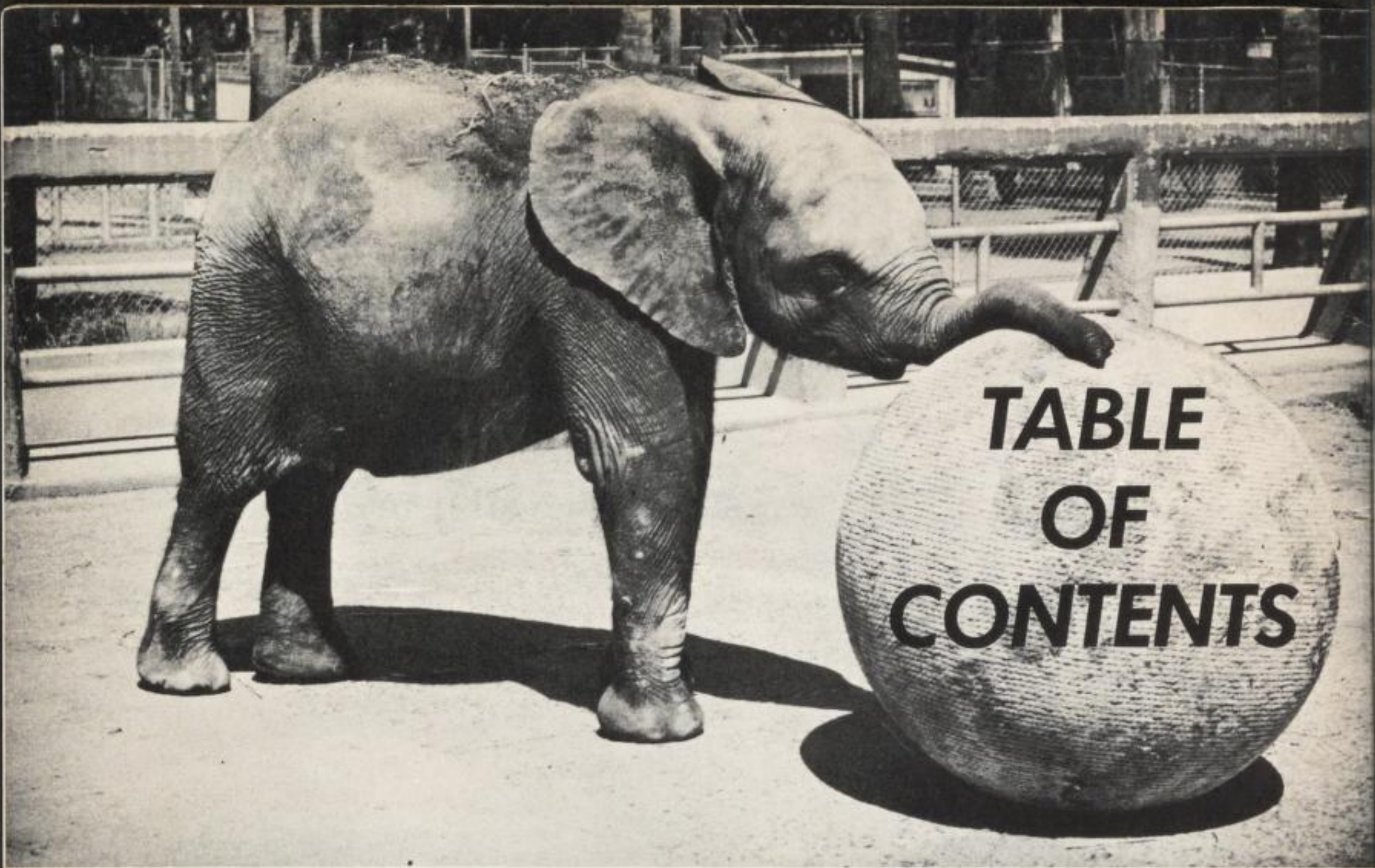


**Banjo, the happy chimp,
welcomes you to the Zoo.**

OFFICIAL GUIDE BOOK

Published by the

Zoological Society of San Diego, Inc.

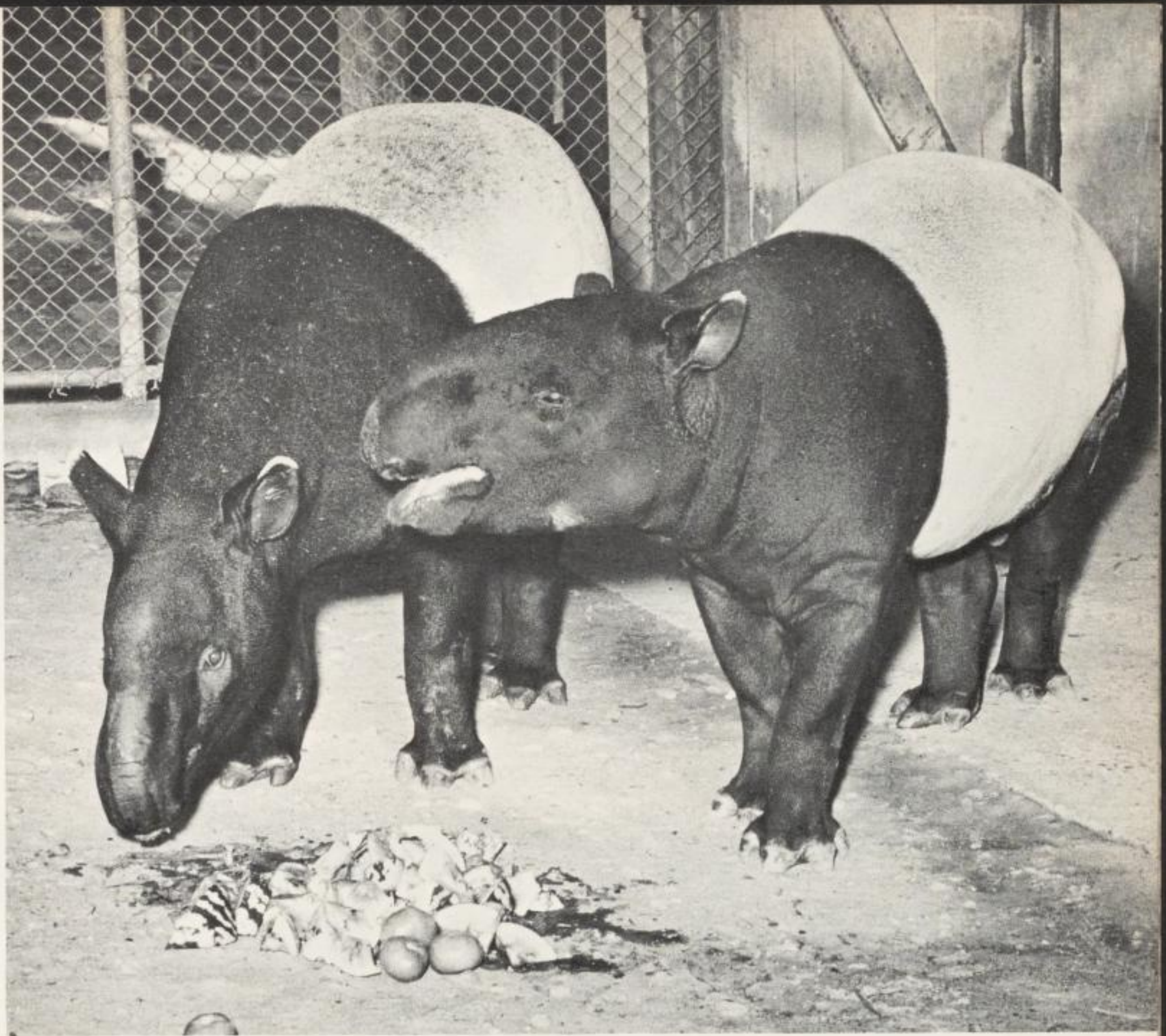


**Peaches, our young AFRICAN ELEPHANT,
is always eager to entertain.**

Introduction	Facing page
General Information	Following page
Children's Zoo	3
Reptiles	9
Mammals	19
Birds	63
Index to Reptiles.....	97
Index to Mammals.....	98
Index to Birds.....	100
History, Services and Membership.....	105

Photographs, unless otherwise accredited, by
Richard Van Nostrand and G. E. Kirkpatrick

Copyright 1957 by the
Zoological Society of San Diego, Inc.



The MALAY TAPIR is also called the "SADDLE-BACKED" TAPIR.

Zebra of south central Africa and Grant's Zebra of the highlands of British East Africa are usually exhibited here. The first is distinguished by tan interspaces between stripes and brown shadow stripes on flanks.

Of the many types of tapirs that existed in prehistoric times, only four have survived; one in southeastern Asia and three in tropical America. These are long-snouted, heavy bodied mammals, semi-aquatic in habit. A large part of the diet is composed of aquatic vegetation. The South American Tapir of tropical South America stands about three feet high and has a sparse coat of coarse brown hair and a short, bristly mane. The Malayan Tapir is also known as the Saddle-backed Tapir

because of a large, sharply defined area of gray on its back and sides. Elsewhere the body is black. This tapir stands about 40 inches at the shoulders and weighs about 520 pounds. It inhabits swampy forests from Malaya north to Tenasserim and occurs in Sumatra as well.

The rhinoceroses are confined to the Old World. Three species occur in southern Asia and adjacent islands, two are native to Africa. All are characterized by large size, nearly naked skin and by the presence of horn-like structures on the



Sally and Barney, our African **BLACK RHINOCEROSES**, in one of their more affectionate moods.

muzzle that are composed of agglutinated hair. The **Black or Hook-lipped Rhinoceros**, now becoming rare but once common throughout Africa south of the Sahara, is characterized by a prehensile, pointed upper lip and by the presence normally of two horns, the front one usually being the longer. Rhinos feed entirely on vegetation. Despite their formid-

able reputation, they are not vicious. Their hysterical charges are generally attributed to panic that results from singularly poor eye-sight.

AFRICAN WART HOG: Note the two pairs of wart-like knobs on its face.

Even-toed Ungulates

This order of cloven-hoofed mammals contains many families that include cattle, goats, sheep, swine, camels, deer, giraffes, antelope, and others. The true swine are native to the Old World, but domestic varieties have been introduced into all parts of the world. Africa is inhabited by a number of these mammals, only one of which is active during the daylight hours. This exception is the grotesque **Wart Hog**

