



LOISABA
CONSERVANCY



RHINOS
AT LOISABA

RHINOS AT LOISABA: THE SITUATION

KENYA'S BLACK RHINOS

The black rhino (*Diceros bicornis*) is in serious trouble. Listed as critically endangered by the IUCN, there are fewer than 5,000 remaining worldwide. From 1970 to 1990, their population in Kenya dropped from 20,000 to under 400 - a loss of 98% in just 20 years. This staggering decrease is mostly attributed to poaching.

Outstanding conservation efforts across the country have seen these numbers crawl back up to around 850 - a monumental achievement and display of commitment. Kenya has vowed to maintain this growth and remains a stronghold of the eastern black rhino subspecies (*Diceros bicornis michaeli*).

Reducing poaching and vigorous, successful breeding programmes means that current sanctuaries are fast approaching their maximum capacity. Simply put, Kenya's rhinos need more space.

The future of the black rhino is of major importance to the Government of Kenya for several reasons:

CONSERVATION CONCERN: Rhinos are a species of conservation concern due to their sudden and massive population decline.

FLAGSHIP SPECIES: They are highly charismatic, and can work as ambassadors for conservation.

UMBRELLA SPECIES: The conservation of rhinos works to create spaces for the conservation of many other species.

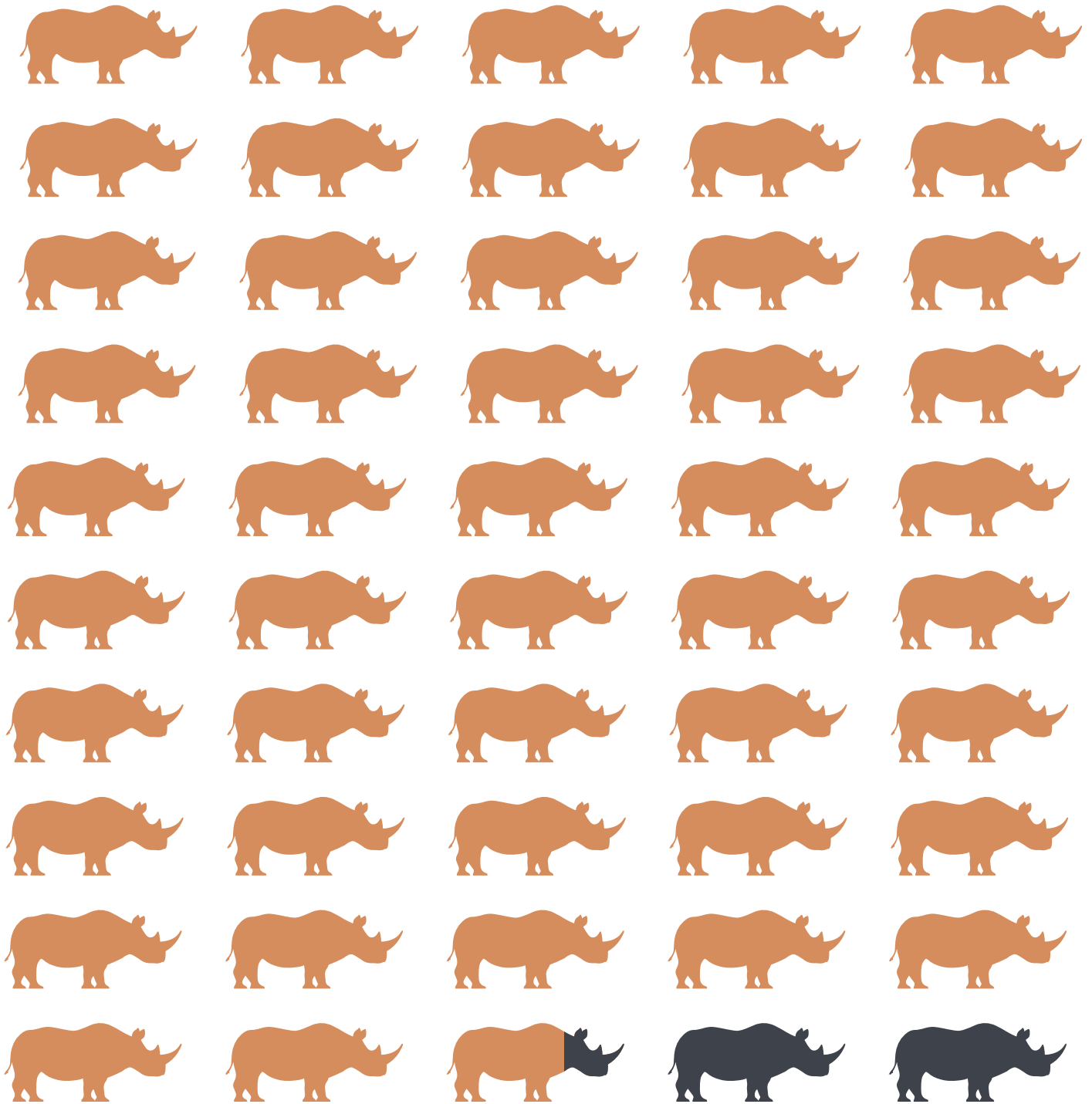
KEystone SPECIES: Rhinos play an important role in ecological dynamics and biodiversity as a whole.

In order to ensure that future populations have enough genetic diversity to thrive, we need to reach a total of at least 2,000 black rhinos in Kenya - more than double the current number.

However, it's not an impossible goal, given the right conditions. If the desired population growth of 5% per year is achieved and maintained, Kenya could reach its goal **in the next 20 years**.

THE MAIN LIMITING FACTOR IS PROVIDING THE SPACE NEEDED FOR THIS POPULATION GROWTH.

KENYA'S BLACK RHINO POPULATION DECREASED BY 98%
IN 20 YEARS - FROM 20,000 ANIMALS TO JUST UNDER 400.



THANKS TO AMAZING CONSERVATION EFFORTS,
THAT NUMBER IS NOW 850, AND GROWING.

RHINOS AT LOISABA: THE CONSERVANCY

LOISABA CONSERVANCY

Loisaba is a beautiful 57,000 acre conservancy within Laikipia County, fully committed to the conservation of wild animals and wild spaces. It is owned by Loisabal Community Trust (which is a Kenyan trust incorporated under the Perpetual Succession of Trustees Act). Here, hundreds of species have found safe and secure homes in which to flourish, from cliff edges to open plains, river banks to thick scrub.

The Loisaba mission is to protect and enhance wildlife diversity, numbers and habitat in the Loisaba landscape, which sits on the western edge of one of Kenya's most important elephant movement corridors. On top of this, we support sustainable livestock production in order to create funds for conservation, and to ensure that conservation benefits the lives of their neighbouring communities.

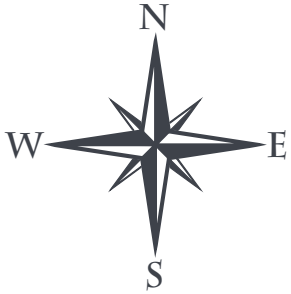
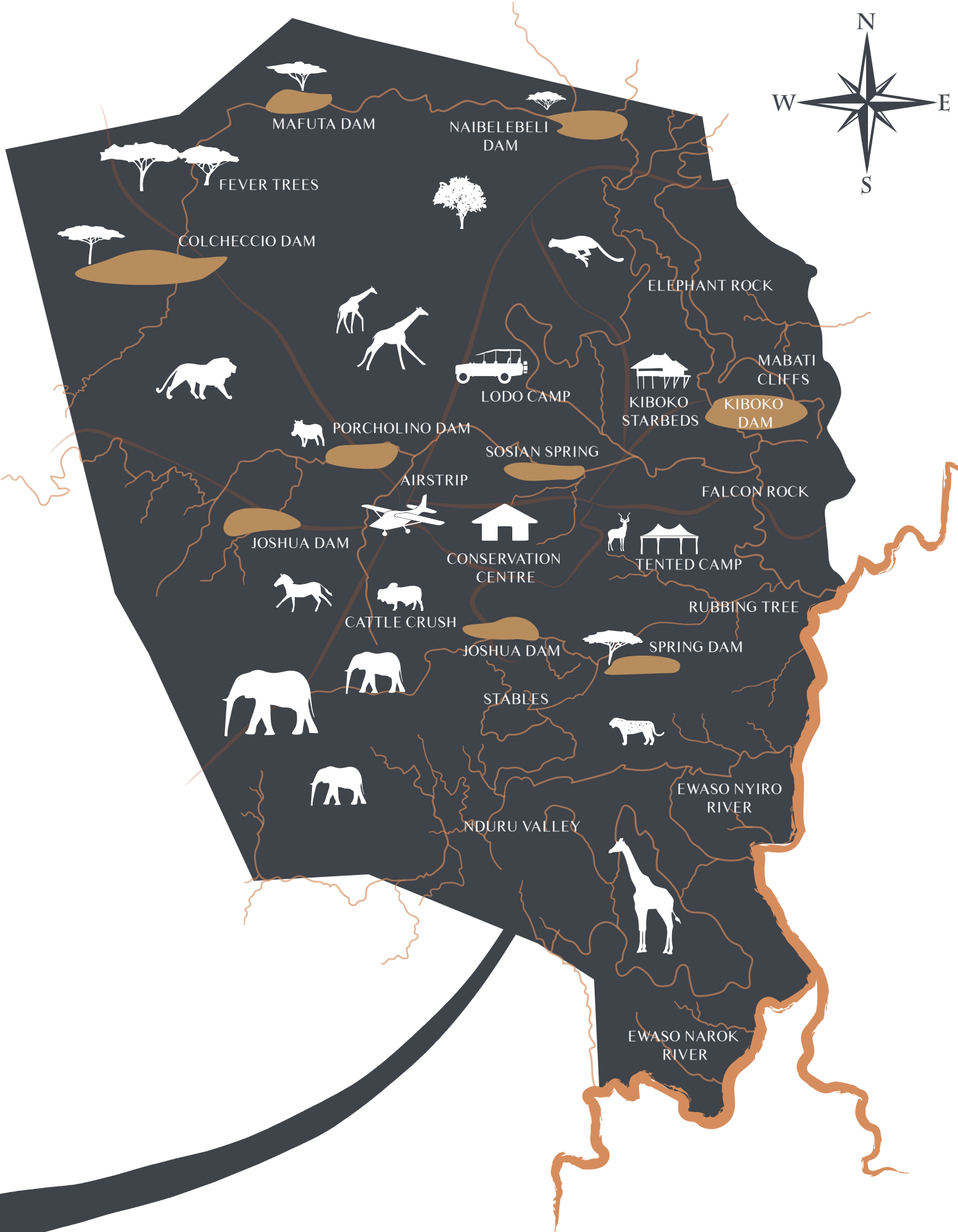
Black rhinos were last seen on the property in the early '70s, and it is Loisaba's aim to help them return to the area. Laikipia already enjoys relatively high numbers of the eastern black rhino (*Diceros bicornis michaeli*), with proven success in similar environments like Ol Jogi Conservancy, Ol Pejeta Conservancy and Lewa Wildlife Conservancy, which are ideal landscapes for black rhino.

SECURITY

We currently have a very well-equipped, well-trained and well-disciplined security team of over 70 dedicated individuals, including an armed NPR unit, rapid response teams, a canine unit comprising four phenomenal tracker dogs and a Lion Ranger team. Together, they provide round the clock patrolling of the Conservancy to eliminate the threat of poaching. With the use of SMART (Species Monitoring and Reporting Tool) software, Loisaba's security team record the GPS points of any wildlife sightings on their patrols, so management can make better informed conservation and security decisions.

Routine morning and evening aerial patrols are also carried out, using our Piper Super Cub. The flight patrol plans are based on events that might have happened on the ground, such as wounded animals or intrusions. This information is received directly from Loisaba's Head of Security or from the CEO. In the case of nothing having happened, a complete overhead patrol of the conservancies borders is undertaken, with patrols across the conservancy for extra security.





MAFUTA DAM

NAIBELEBELI DAM

FEVER TREES

COLCHECCIO DAM

ELEPHANT ROCK

MABATI CLIFFS

KIBOKO DAM

LODO CAMP

KIBOKO STARBEDS

PORCHOLINO DAM

SOSIAN SPRING

AIRSTRIP

FALCON ROCK

JOSHUA DAM

CONSERVATION CENTRE

TENTED CAMP

RUBBING TREE

CATTLE CRUSH

JOSHUA DAM

SPRING DAM

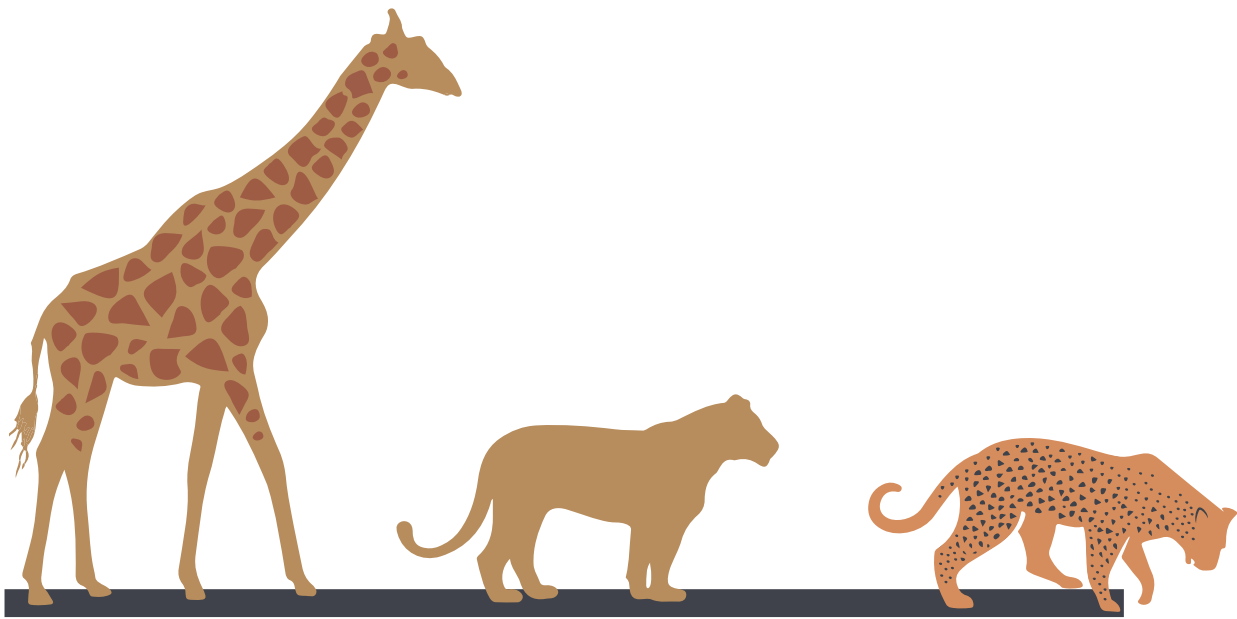
STABLES

EWASO NYIRO RIVER

NDURU VALLEY

EWASO NAROK RIVER

RHINOS AT LOISABA: THE CONSERVANCY



CONSERVATION

Loisaba Conservancy has partnered with San Diego Zoo Wildlife Alliance and Lion Landscapes to help provide support and resources for their reticulated giraffe, leopard and lion monitoring projects. We are well set up for conservation research, and can put what we already have in place to good use in securing a safe and happy home for rhinos in the near future.



COMMUNITY

Since we already have a positive relationship with our surrounding communities, we believe we will be able to understand how our neighbours feel about the introduction of rhinos. We firmly stand by the importance of education, and support the development of local schools (including building classrooms and libraries and providing internet access) as well as education strategies. At our Conservation Centre, we host regular education days, teaching children about the importance of wildlife and habitat conservation, and the finer details of land management.

Children have a keen interest in wildlife and conservation, but lack the opportunity to see them in real life. Loisaba aims to provide that link, to help with conservation education, and to encourage positive participation in the landscape. We hope that by providing this resource to the next generation, we can inspire many more future conservationists, and reduce human-wildlife conflict. In addition to this, Loisaba Conservancy offers scholarships to students at primary, secondary and university levels. We also have an active and engaged community health plan and offer extra support to the health services provided by the county and other partners in our local communities - ensuring that our work benefits our neighbours on multiple different levels.



LOISABA HAS THE SPACE AND SECURITY REQUIRED TO
HELP GROW KENYA'S BLACK RHINO POPULATION

RHINOS AT LOISABA: THE PROPOSAL

THE PROPOSAL

We want to bring rhinos back to Loisaba.

The proposal is to reintroduce a start-up population of black rhinos into an 84km² fenced sanctuary within Loisaba. Eventually, we hope they will roam free over the entire 230km² Conservancy.

A survey will be conducted to identify the highest number of rhinos the land can sustain, as well as the minimum number they would need in order to start breeding and having an impact on their environment. The individual animals chosen for relocation would be selected after careful consideration of factors like age and gender, to give them the best chance at thriving from the outset. As soon as they outgrow the initial sanctuary space, they will be released into the wider Conservancy.

The management structure for the rhino sanctuary will be integrated into the existing structure of Loisaba and will fall under the overall management of the CEO and Board of Trustees. It will include the recruitment of new positions within Loisaba, and expanding the responsibilities of existing roles within the Conservancy's team.

RHINO SANCTUARY OFFICER

A rhino sanctuary officer will be appointed through an open recruitment process. This is an ideal career progression for an existing member of staff, but the position will also be open to individuals not already employed by Oryx Ltd.



SECURITY

Armed security personnel will monitor the sanctuary at all times using SMART phone patrols and observation posts which would be built in the area, with the remaining security team carrying out patrols around the rest of the conservancy. A dedicated rhino monitoring team will assist the armed guards, managed by the Rhino Sanctuary Officer.

The rhino monitors will undergo a rhino monitoring programme, with the Rhino Sanctuary Officer undertaking training for monitoring, collection and analysis of relevant data.

COMMUNITY LIAISON OFFICER

Our existing Community Liaison Officer will be heavily involved to maintain a positive relationship with the surrounding communities with regards to rhino safety and conservation.

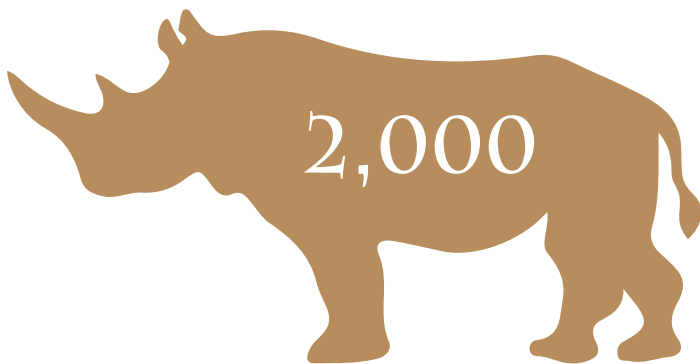
FENCE MAINTENANCE TEAM

Loisaba's existing fence team will provide consistent monitoring and maintenance of the sanctuary's fence.



RHINOS AT LOISABA: THE PROPOSAL

BENEFITS



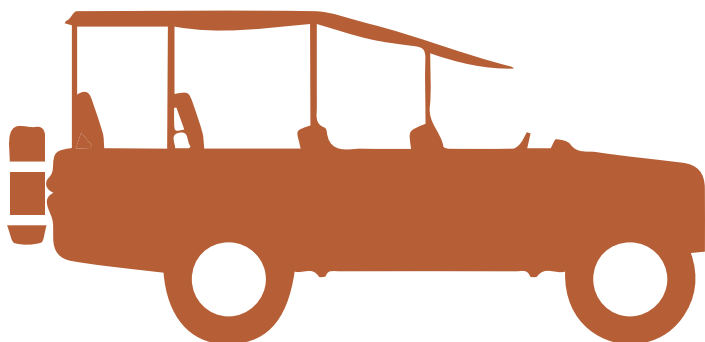
POPULATION GROWTH

The long term vision of Kenya's Rhino Action Plan is to achieve a population of at least 2,000 eastern black rhinos (*Diceros bicornis michaeli*) in Kenya, and a meta-population of 830 black rhinos by the end of 2021.



GENETICS

The translocation of rhinos to Loisaba not only provides habitat in order to maintain a population growth rate, but also creates an opportunity to widen the gene pool, by selecting individuals from different areas. Rhinos can be selected from nearby areas, reducing the risks associated with moving long distances into different habitats.



TOURISM

Bringing rhinos back to Loisaba would also help boost tourism, as our proposed sanctuary encompasses all three tourism properties. This would increase employment and revenue flow into neighbouring communities, as well as providing more income to the Conservancy.



LOISABA

CONSERVANCY



+254 (0) 705 202 375



enquiries@loisaba.com



@loisaba_conservancy



@LoisabaConservancy



@Loisaba



Loisaba Conservancy (Oryx Ltd.)



Loisaba Operations

WWW.LOISABA.COM

LAND CONNECTED. LIFE PROTECTED.