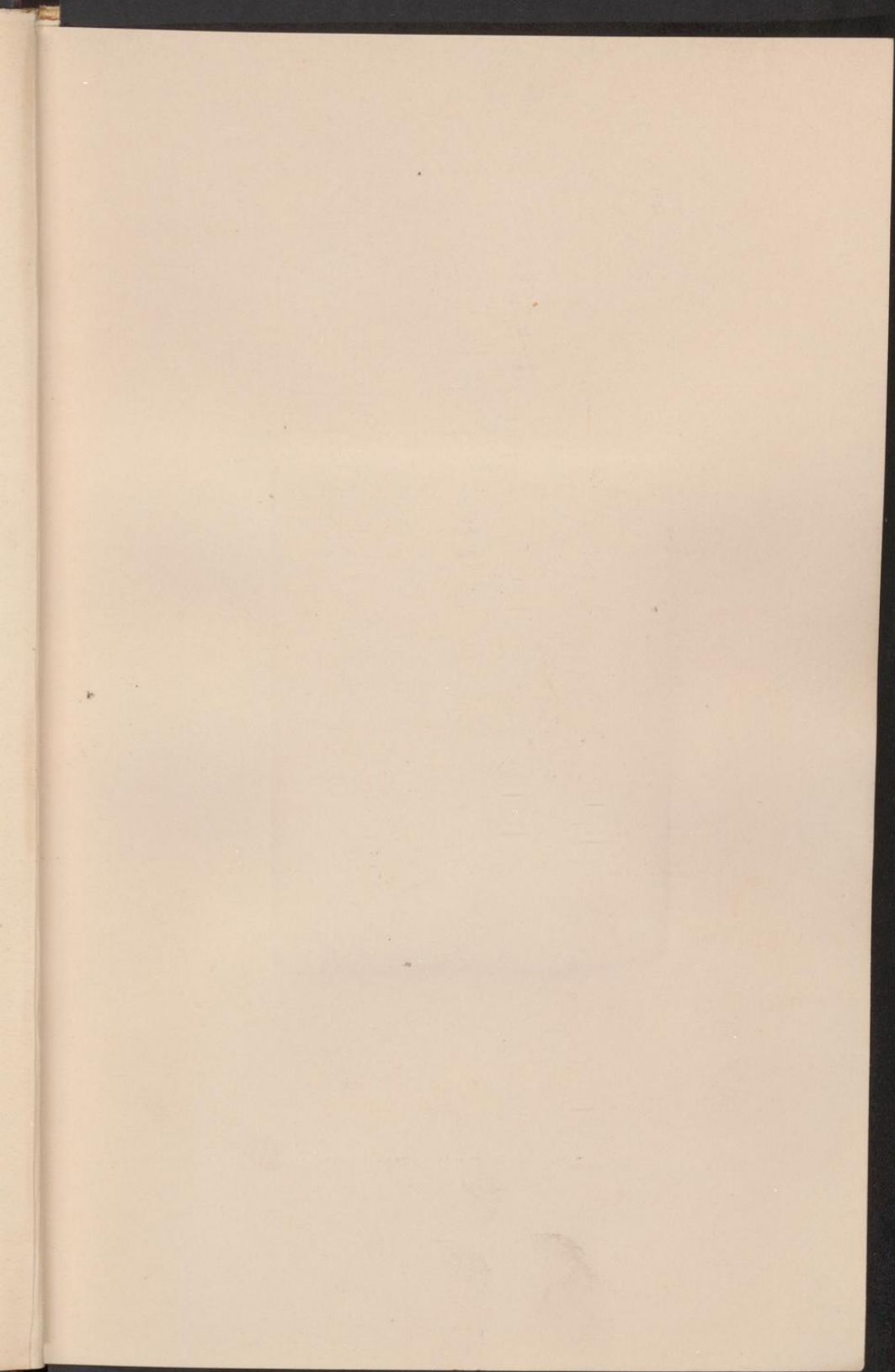


FALCONER'S
PALÆONTOLOGICAL MEMOIRS

&c.

VOLUME II.

LONDON
PRINTED BY SPOTTISWOODE AND CO.
NEW-STREET SQUARE





Photographed by Ernest Edwards 20 Be'er Street W
Printed in Pigments. (Swan's Patent.)

PALÆONTOLOGICAL MEMOIRS AND NOTES

OF THE LATE

HUGH FALCONER, A.M., M.D.

VICE-PRESIDENT OF THE ROYAL SOCIETY;

FOREIGN SECRETARY OF THE GEOLOGICAL SOCIETY OF LONDON;
AND FOR MANY YEARS
SUPERINTENDENT OF THE H. E. I. COMPANY'S BOTANICAL GARDENS
AT SUHARUNPOOR AND CALCUTTA.

WITH A

Biographical Sketch of the Author.

COMPILED AND EDITED BY

CHARLES MURCHISON, M.D., F.R.S.

FELLOW OF THE ROYAL COLLEGE OF PHYSICIANS OF LONDON.

VOL. II.

MASTODON, ELEPHANT, RHINOCEROS,
OSSIFEROUS CAVES,
PRIMEVAL MAN AND HIS COTEMPORARIES.

LONDON:

ROBERT HARDWICKE, 192 PICCADILLY.

1868.



81 111:2

Sta.



This Volume is Dedicated to

M. ED. LARTET,

FOREIGN MEMBER OF THE GEOLOGICAL SOCIETY OF LONDON,

GEORGE BUSK, F.R.S.,

THE REV. JOHN GUNN, F.G.S.,

JOSEPH PRESTWICH, F.R.S.,

CAPT. SPRATT, R.N., C.B.,

AND

COLONEL WOOD, F.G.S.,

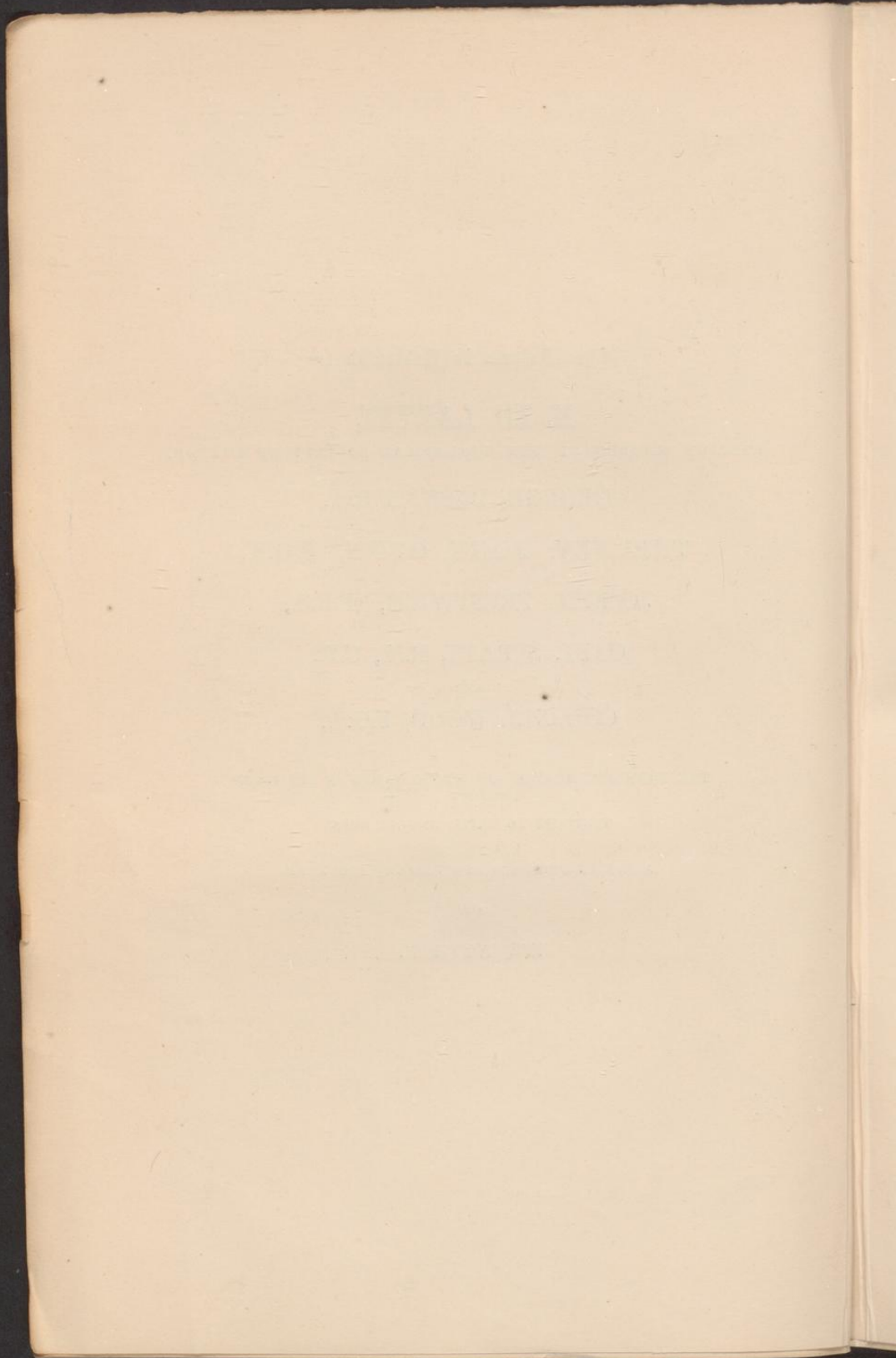
THE FREQUENT MENTION OF WHOSE NAMES IN ITS PAGES

TESTIFIES TO THEIR HAVING BEEN

ALIKE THE FRIENDS AND FELLOW-LABOURERS

OF

ITS AUTHOR.



CONTENTS

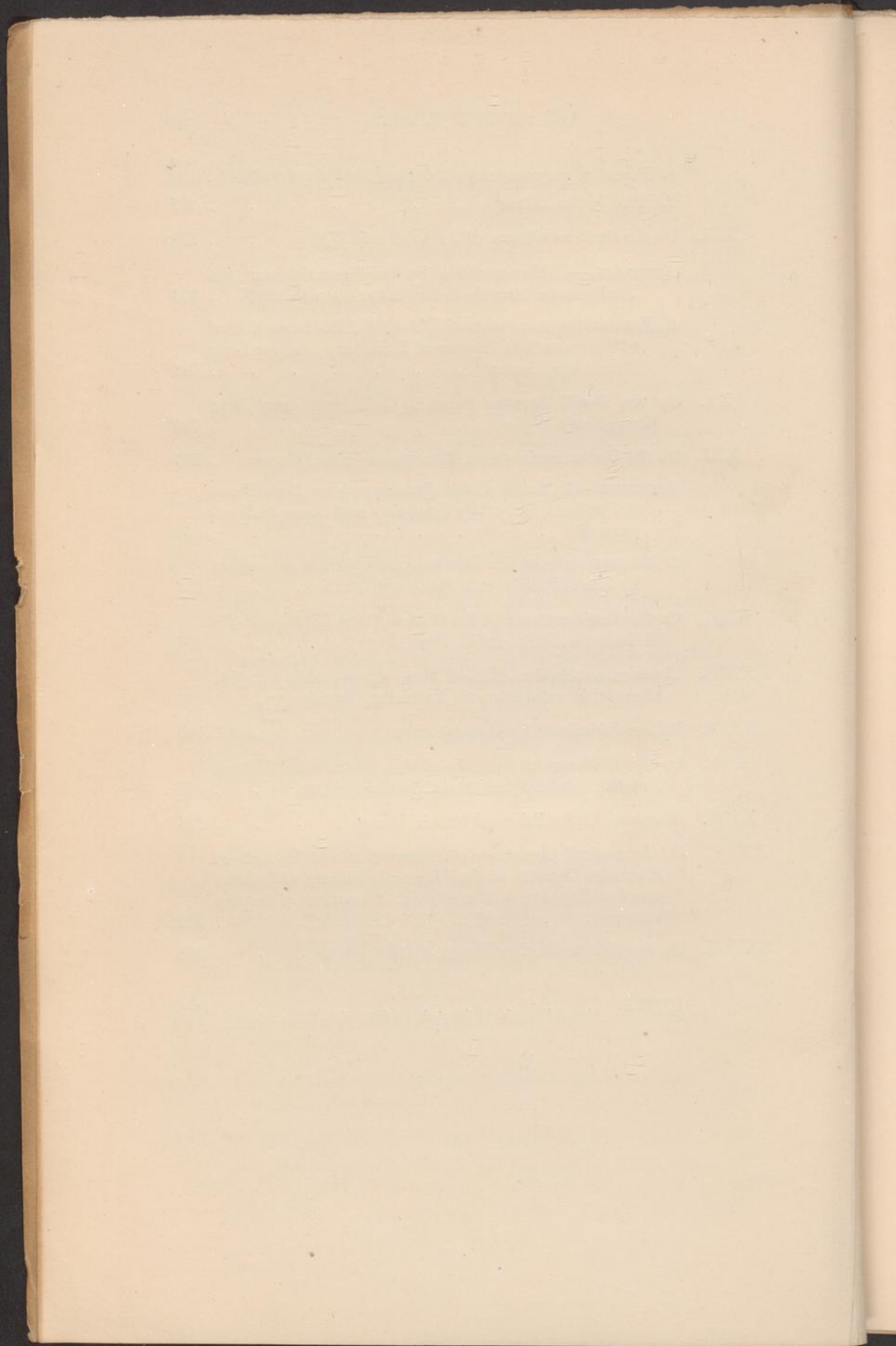
OF

THE SECOND VOLUME.

	PAGE
I. On the Species of Mastodon and Elephant occurring in the Fossil state in Great Britain. Part I. Mastodon	1
APPENDIX.—1. Note on J. F. Brandt's Memoir on the Skeleton of a Mastodon, discovered near Nicolaieff in Southern Russia. By Dr. Falconer and Mr. T. Rupert Jones.	65
2. Notes on specimens of <i>Mastodon angustidens</i> and <i>M. Borsoni</i> in the Museums of Zurich and Winterthur	68
3. Note on Cast of a Lower Jaw of an American Mastodon at Genoa	74
II. On the Species of Mastodon and Elephant occurring in the Fossil state in Great Britain. Part II. Elephant	76
III. On the American Fossil Elephant of the regions bordering the Gulf of Mexico (<i>E. Columbi</i> , Falc.), with general observations on the living and extinct Species of Elephants	212
IV. On the Fossil Remains of <i>Elephas Melitensis</i> , an extinct pigmy Species of Elephant, and of other Mammalia, &c. from the Ossiferous Caves of Malta	292
APPENDIX.—1. Extracts of Letters from Dr. Falconer to Capt. Spratt, C.B.	299
2. Extracts from Dr. Falconer's Note Books	301
3. Abstract of Communication to the British Association at Cambridge, on Oct. 6, 1862, on the Ossiferous Caves of Malta	307
V. On the European Pliocene and Post-Pliocene Species of the Genus <i>Rhinoceros</i>	309

	PAGE
1. On <i>Rhinoceros hemiteachus</i> (Falc.). An extinct Species prevailing in the Gower Caves, South Wales	311
APPENDIX.—(Extracts from Dr. Falconer's Note Books)	349
2. Notes on <i>Rhinoceros Etruscus</i> (Falc.)	354
3. Notes on <i>Rhinoceros leptorhinus</i> (Cuv. <i>pro parte</i>), <i>R. megarhinus</i> (Christol)	368
4. Notes on <i>Rhinoceros antiquitatis</i> (Blumb.), <i>R. tichorhinus</i> (Fisch. & Cuv.)	399
Notes on Dentition of existing Species of Rhinoceros. <i>R. Keitloa</i> , <i>R. camus</i> , and <i>R. bicornis</i>	402
VI. Note on the existing Hippopotamus Liberiensis (Morton), with a synopsis of the <i>Hippopotamidae</i> , Fossil and Recent	404
VII. Description of two Species of the Fossil Mammalian Genus, <i>Plagiaulax</i> , from Purbeck	408
VIII. On the disputed affinity of the Mammalian Genus <i>Plagiaulax</i> , from the Purbeck Beds	430
IX. Note on the occurrence of <i>Spermophilus</i> in the Cave Fauna of England	452
X. Note on the occurrence of <i>Felis spelæa</i> in the Mendip Caverns and elsewhere, and on a Species of <i>Felis</i> found in one of the Gower Caves	455
XI. Note on the Remains of <i>Drepanodon</i> or <i>Machairodus</i> of reputed British origin	459
XII. Note on the Remains of a Hyænid Wolf, from Sprintsail-Tor Cave	462
XIII. Notes on Hyæna	464
XIV. Notes on Fossil Species of <i>Ursus</i>	466
XV. Notes on Fossil Species of <i>Cervus</i> , including a description of a remarkable Fossil Antler of a large Species of extinct <i>Cervus</i> , <i>C. (Eucladoceros) Sedgwickii</i> , in the collection of the Rev John Gunn, Irstead	471
XVI. Note on an undescribed Species of <i>Bos</i> in the Florence Museum (<i>Bos Etruscus</i>)	481
XVII. Note on Crania of <i>Crocodylus cataphractus</i> and <i>C. marginatus</i> , in the Belfast Museum	482
XVIII. On the Ossiferous Cave of Brixham, near Torquay	486
1. Letter from Dr. Falconer to the Secretary of the Geological Society	487

	PAGE
2. Report of progress in the Brixham Cave, Sept. 9, 1858	491
3. Note by the Editor	497
XIX. On the Ossiferous Caves of Gower, South Wales	498
APPENDIX.—1. Memorandum by Mr. Prestwich on the Boulders and Gravels of the Gower Cave District	536
2. Note on the occurrence of Wrought Flints in association with two extinct Species of Rhinoceros, &c. in 'Long Hole' Cave, Gower	538
XX. On the Fossil Remains found in Cefn Cave, near Bryn Elwy, North Wales	541
XXI. On the Ossiferous Grotta di Maccagnone, near Palermo	543
APPENDIX.—1. Notice of the discovery of two Bone Caves in Northern Sicily. By François Anca, Baron de Man- galaviti	551
2. Memorandum by Dr. Falconer on the former connection by Land of Sicily with Malta and Africa	552
XXII. On the Fossil contents of the Genista Cave, Gibraltar. By H. Falconer, M.D., and G. Busk, Esq	554
XXIII. Notes on a collection of Fossil Bones discovered in a section of gravel in excavating the Folkestone Battery	564
XXIV. Primeval Man and his Cotemporaries	570
XXV. On the Evidence in the Case of the Controverted Human Jaw and Flint-Implements of Moulin-Quignon	601
XXVI. Works of Art by Primeval Man in Europe	626
XXVII. On the asserted Occurrence of Human Bones in the Ancient Fluviatile Deposits of the Nile and Ganges; with Com- parative Remarks on the Alluvial Formations of the two Valleys	632
XXVIII. On the Glacier-Erosion Theory of Lake-Basins	648
INDEX	661



LIST OF ILLUSTRATIONS

IN

THE SECOND VOLUME.

A. PLATES.

PLATE		PAGE
I.	Representations in outline of crania of Proboscidea. Anterior views	16
II.	Representations in outline of crania of Proboscidea. Profile views	16
III.	Molars of <i>Mastodon (Tetralophodon) longirostris</i> and <i>M.</i> <i>(Trilophodon) angustidens</i>	22
IV.	Molars of <i>Mastodon (Tetralophodon) Arvernensis</i> , from the Crag	26
V.	Molars of <i>Elephas (Stegodon) Cliftii</i> and <i>E. (Stegodon) insignis</i>	86
VI.	Molars of <i>Elephas (Loxodon) Africanus</i> , <i>E. (Loxodon) plani-</i> <i>frons</i> , <i>E. (Euelephas) Indicus</i> , and <i>E. (Euelephas) primi-</i> <i>genius</i>	90
VII.	Molars of <i>Elephas (Loxodon) priscus</i>	100
VIII.	Molars of <i>Elephas (Loxodon) meridionalis</i>	132
IX.	Molars of <i>Elephas (Euelephas) antiquus</i>	184
X.	Molars of <i>Elephas (Euelephas) Columbi</i> and <i>E. (Euelephas)</i> <i>Armeniacus</i>	222
XI.	Molars, &c. of <i>Elephas (Loxodon) Melitensis</i>	294
XII.	Molars of <i>Elephas (Loxodon) Melitensis</i>	298
XIII.	Vertebra and Pelvis of <i>Elephas (Loxodon) Melitensis</i>	304
XIV.	Humerus and Femur of <i>Elephas (Loxodon) Melitensis</i>	304
XV.	Cranium of <i>Rhinoceros hemitachus</i> . The 'Clacton Skull'	318
XVI.	Upper Molars of <i>Rhinoceros hemitachus</i> , from the Gower Caves	324
XVII.	Upper Molars of <i>Rhinoceros hemitachus</i> , from the Gower Caves	326

PLATE		PAGE
XVIII.	Upper Molars of <i>Rhinoceros leptorhinus</i> (<i>R. megarhinus</i>), <i>R. hemitechus</i> , and <i>R. bicornis</i>	336
XIX.	Lower Jaw with Molars of <i>Rhinoceros hemitechus</i> , from the Gower Caves.	340
XX.	Lower Jaw with Molars advanced in wear of <i>Rhinoceros</i> <i>hemitechus</i> , from the Gower Caves	340
XXI.	Lower Jaw with Molars, and Upper Jaw with Milk Den- tition, of <i>Rhinoceros hemitechus</i>	342
XXII.	Lower Jaw and Molars of <i>Rhinoceros Etruscus</i> , from the Norfolk Forest-bed and the Val d'Arno	346
XXIII.	Comparison of Skulls of <i>Rhinoceros hemitechus</i> , from the Gower Caves and Northamptonshire. Basal views	352
XXIV.	Comparison of Skulls of <i>Rhinoceros hemitechus</i> , from the Gower Caves and Northamptonshire. Profile and upper views	352
XXV.	Milk Dentition of <i>Rhinoceros hemitechus</i> , from the Gower Caves, and Molars of <i>R. Etruscus</i> , from Pisa	354
XXVI.	Cranium of <i>Rhinoceros Etruscus</i> in Florence Museum	356
XXVII.	Cranium, Lower Jaw and Molars of <i>Rhinoceros Etruscus</i> in Florence Museum	356
XXVIII.	Cranium of <i>Rhinoceros Etruscus</i> in Museum at Pisa, and Lower Jaw of ditto at Leghorn	360
XXIX.	Cranium, showing Molars, of <i>Rhinoceros Etruscus</i> , in the University Museum of Bologna	366
XXX.	Lower Jaw of <i>Rhinoceros leptorhinus</i> (<i>R. megarhinus</i>) in the Museum of Montpellier	368
XXXI.	Molars and Cranium of <i>Rhinoceros leptorhinus</i> (<i>R. megar-</i> <i>hinus</i>) at Imola and Lyons	370
XXXII.	Molars of <i>Rhinoceros leptorhinus</i> (<i>R. megarhinus</i>) at Stutt- gart and Rome	378
XXXIII.	Lower Jaws and Dentition of <i>Plagiaulax Becklesii</i>	410
XXXIV.	Lower Jaws and Dentition of <i>Plagiaulax Becklesii</i> , <i>Plag.</i> <i>minor</i> , <i>Microlestes antiquus</i> , <i>Thylacoleo carnifex</i> , and <i>Cheiromys Madagascariensis</i>	416
XXXV.	Lower Jaws of various Species of <i>Spermophilus</i> and Carnas- sier of <i>Felis spelæa</i>	454
XXXVI.	Lower Jaw of Hyænid Wolf, from Sprintsail-Tor Cave, and of <i>Ursus</i> from 'Deborah's Den'	470
XXXVII.	Antler of <i>Cervus</i> (<i>Eucladoceros</i>) <i>Sedgwickii</i>	480
XXXVIII.	Crania of <i>Crocodylus cataphractus</i> and <i>C. marginatus</i>	484

B. WOOD ENGRAVINGS.

FIG.		PAGE
1 & 2.	Two views of Pelvis of <i>Elephas Indicus</i> (var. <i>dauntela</i>), copied from Cuvier's 'Ossemens Fossiles,' Eléph. Pl. VII. figs. 3 & 4, to illustrate measurements of Mr. Gunn's Pelvis of <i>Elephas meridionalis</i>	142
3.	Ground Plan of Galleries in Brixham Cave	492
4.	Section of Raised Beach near Mewslade, Gower, S. Wales	537
5.	Ground Plan of Cefn Cave	541
6.	Vertical Section of the Grotta di Maccagnone	547
7.	Ground Plan of the Grotta di Maccagnone	547
8.	The Elephant victorious over the Tortoise, and supporting the world, from a sketch by the late Professor Edward Forbes	575
9.	The Elephant borne by a Tortoise, and supporting the world, from a sketch by the late Professor Edward Forbes	600

CORRIGENDA AND ADDENDA.

- Page 52 line 17 of Note 3. *For erreur, read erreur.*
- „ 92 „ 27. *For mandibule, read mandible.*
- „ 135 „ 4 & 38. *For channeled, read channelled, and for channeling, read channelling.*
- „ 137 „ 37. *For channeled, read channelled.*
- „ 138 „ 32. *For channeling, read channelling.*
- „ 147 *In notes 1 and 2 for Plate VIII. substitute Plate VI.*
- „ 188, line 6. *For Amasses? read Anapus.*
- „ 188 „ 21. *For Folger's, read Foulger's.*
- „ 199 „ 15. *For lagon, read lagoon.*
- „ 207 „ 14. *For Liberensis, read Liberiensis.*
- „ 208 „ 40. *For Sutton, read Stutton.*
- „ 270 „ 36. *For continuous, read contiguous.*
- „ 309, last line. *For tichorinus, read tichorhinus.*
- „ 310, lines 28 & 33. *For tichorinus, read tichorhinus.*
- „ 311 „ 3, 10, & 18. *For tichorinus, read tichorhinus.*
- „ 325 „ 11. *For left, substitute right.*
- „ 330 „ 3 from bottom. *For fig. 5, read fig. 3.*
- „ 351 „ 12 of second paragraph. *For B. M. 132,133, read B. M. 27,836.*
- „ 353 „ 1. *For Cesell's, read Ceselli's.*
- „ 355 „ 7. *For Sub-Appenines, read Sub-Appennines.*
- „ 356 „ 17. *For about, read orbital.*
- „ 359 „ 19. *For ou, read o.*