

[Reprint.]

PLATE IV.

RHINOCEROS & ACEROTHERIUM.

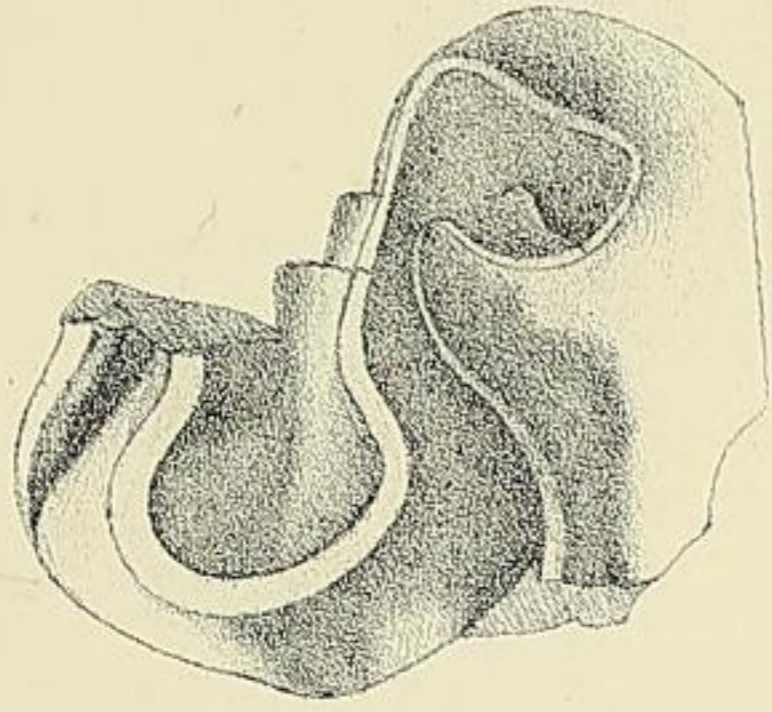
- Fig. 1. RHINOCEROS PALÆINDICUS, Falc. & Caut. : fragment of upper molar of the left side : Siwalik.
- Fig. 2. RHINOCEROS SIVALENSIS, Falc. & Caut. : 3rd upper true molar of the right side : Siwalik.
- Fig. 3. RHINOCEROS PALÆINDICUS, Falc. & Caut. : upper premolar of the right side : Siwalik
(copied from "F. A. S.," Plate LXXIV, fig. 4).
- Fig. 4. RHINOCEROS PLATYRHINUS, Falc. & Caut. : 2nd upper true molar of the right side
(copied from "F. A. S.," Plate LXXV, fig. 11a).
- Fig. 5. RHINOCEROS INDICUS, Cuv. : 3rd upper true molar of the left side : Narbada valley ; described in second fasciculus as R. NAMADICUS.
- Fig. 6. RHINOCEROS INDICUS, Cuv. : 2nd upper true molar of the right side : Narbada valley ; described in second fasciculus as R. NAMADICUS.
- Fig. 7. ACEROTHERIUM PERIMENSE, Falc. & Caut. : upper true molar of the right side : Siwalik ; described in text as RHINOCEROS PLANIDENS, *nobis*.
- Fig. 8. RHINOCEROS SIVALENSIS, Falc. & Caut. : 2nd upper true molar of the right side : Siwalik
(copied from Messrs. Baker and Durand's memoir).
- Fig. 9. ACEROTHERIUM PERIMENSE, Falc. & Caut. : upper molar of the left side : Siwalik ; described in text as RHINOCEROS PLANIDENS, *nobis*.

Figs. 3 and 4 one-half natural size ; fig. 8 one-quarter natural size ; the rest natural size.

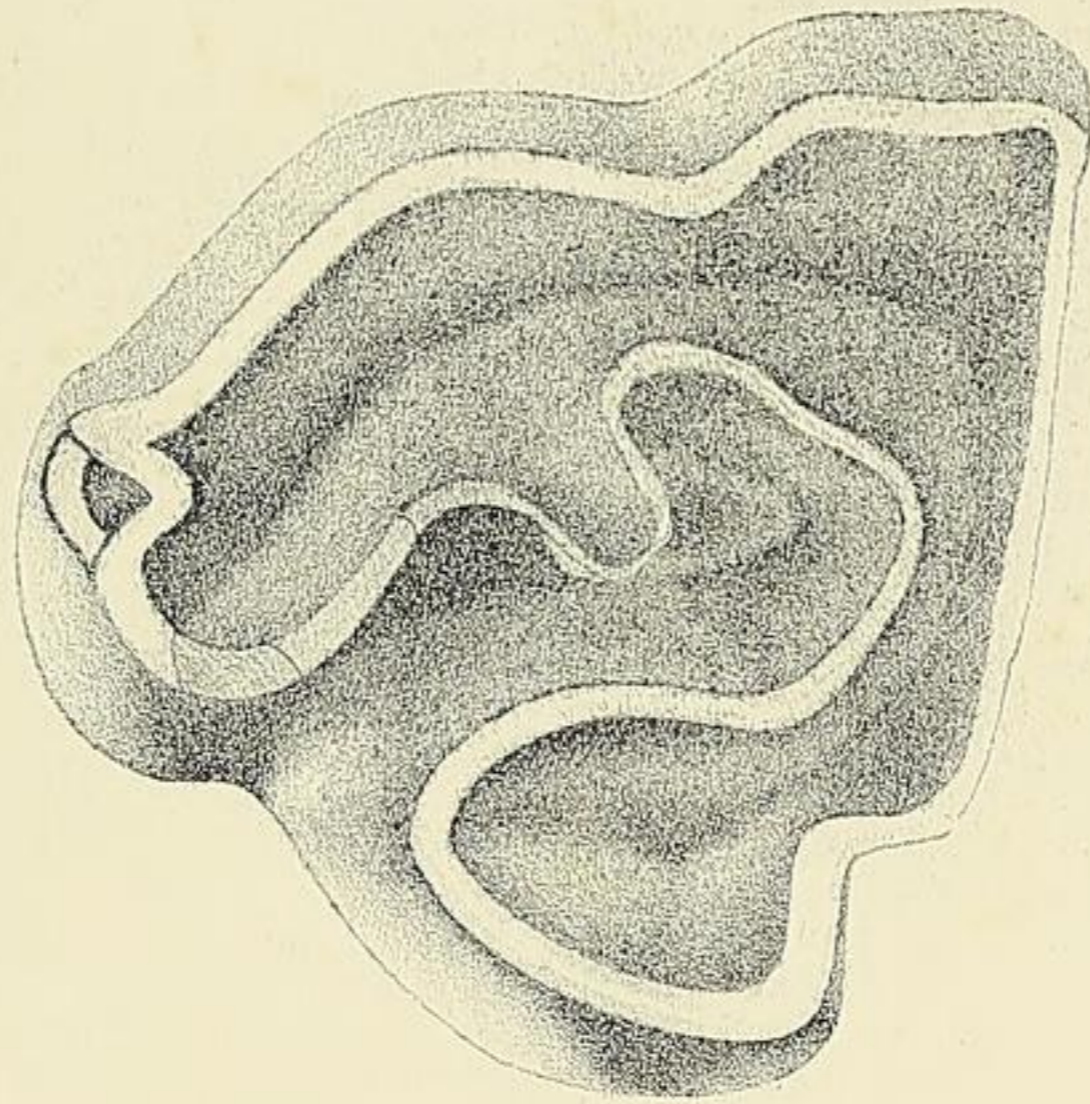
PLATE IV.—RHINOCEROS.

- Fig. ... 1. RHINOCEROS PALÆINDICUS, *Falc. and Caut.*: upper molar; left side. Lehri—
Siwaliks. No. 57.
- Fig. ... 2. RHINOCEROS SIVALENSIS, *Falc. and Caut.*: 3rd upper molar; right side. Katana—
Siwaliks. No. $\frac{S.}{105}$.
- Fig. ... 3. RHINOCEROS PALÆINDICUS, *Falc. and Caut.*: upper premolar; right. Siwaliks
(copied from "F. A. S." plate 74, fig. 4).
- Fig. ... 4. RHINOCEROS PLATYRHINUS, *Falc. and Caut.*: 2nd upper molar; right side (copied
from "F. A. S." plate 75, fig. 11a).
- Fig. ... 5. RHINOCEROS NAMADICUS, *Falc. et nobis*: 3rd upper molar; left side. Narbudda
Valley. No. 471.
- Fig. ... 6. RHINOCEROS NAMADICUS, *Falc. et nobis*: 2nd upper molar; right side. Narbudda
Valley. No. 470.
- Fig. ... 7. RHINOCEROS PLANIDENS, *n. sp. nobis*: upper molar; right side. Gadari—Siwa-
liks. No. 56.
- Fig. ... 8. RHINOCEROS SIVALENSIS, *Falc. and Caut.*: 2nd upper molar; right side. Siwa-
liks (copied from Messrs. Baker and Durand).
- Fig. ... 9. RHINOCEROS PLANIDENS, *n. sp. nobis*: upper molar; left side. Gadari—Siwaliks.
No. $\frac{N}{7}$.

Figures 3 and 4 one-half natural size; figure 8 one-quarter natural size; the rest natural size.



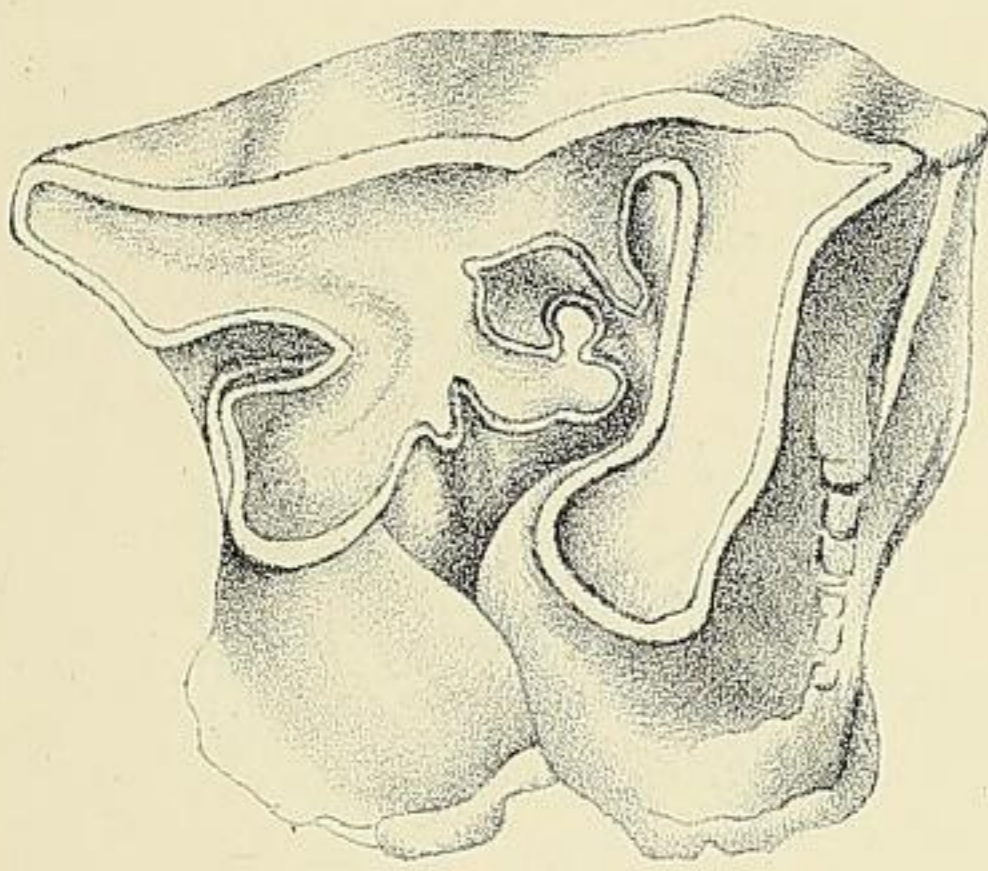
1.



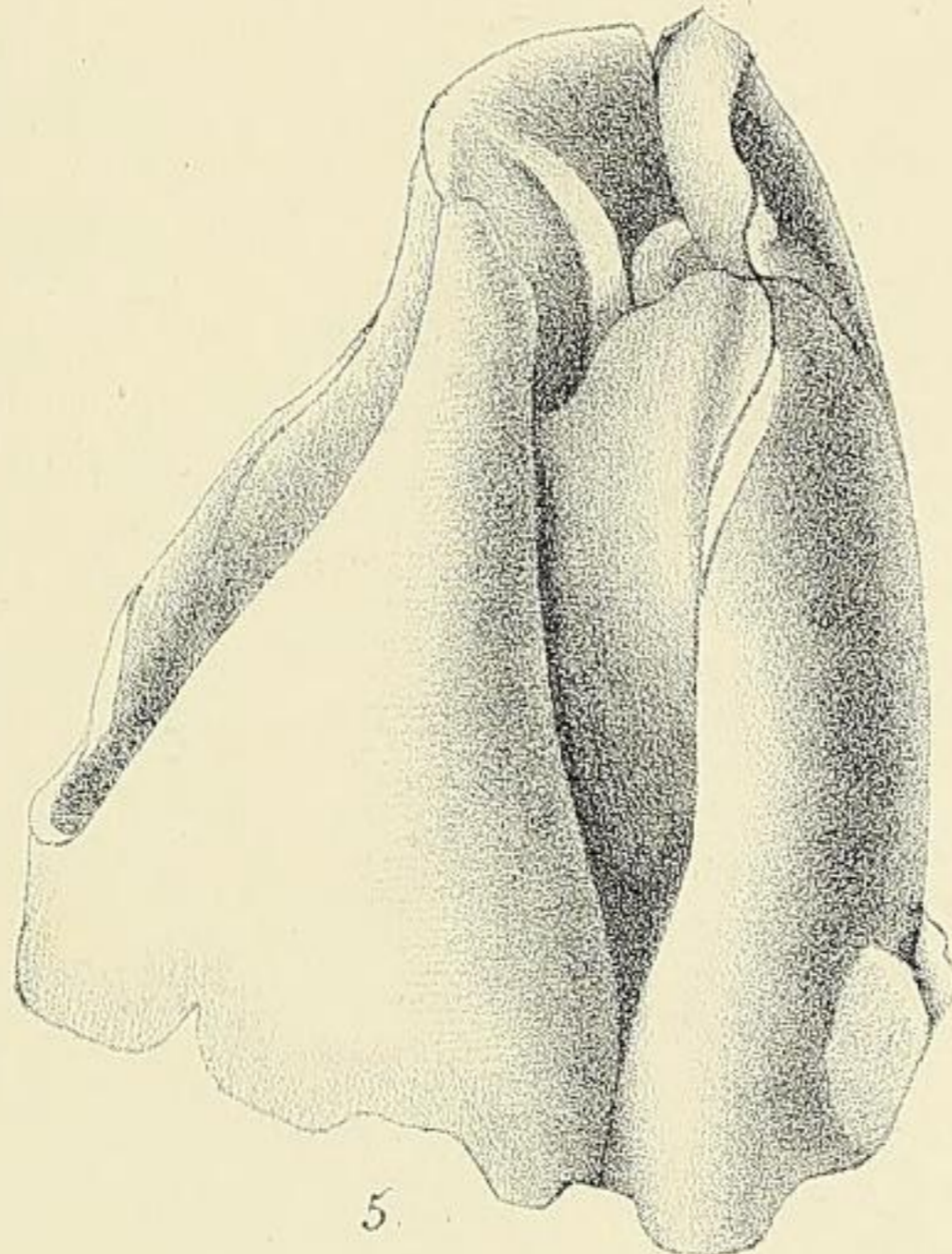
2.



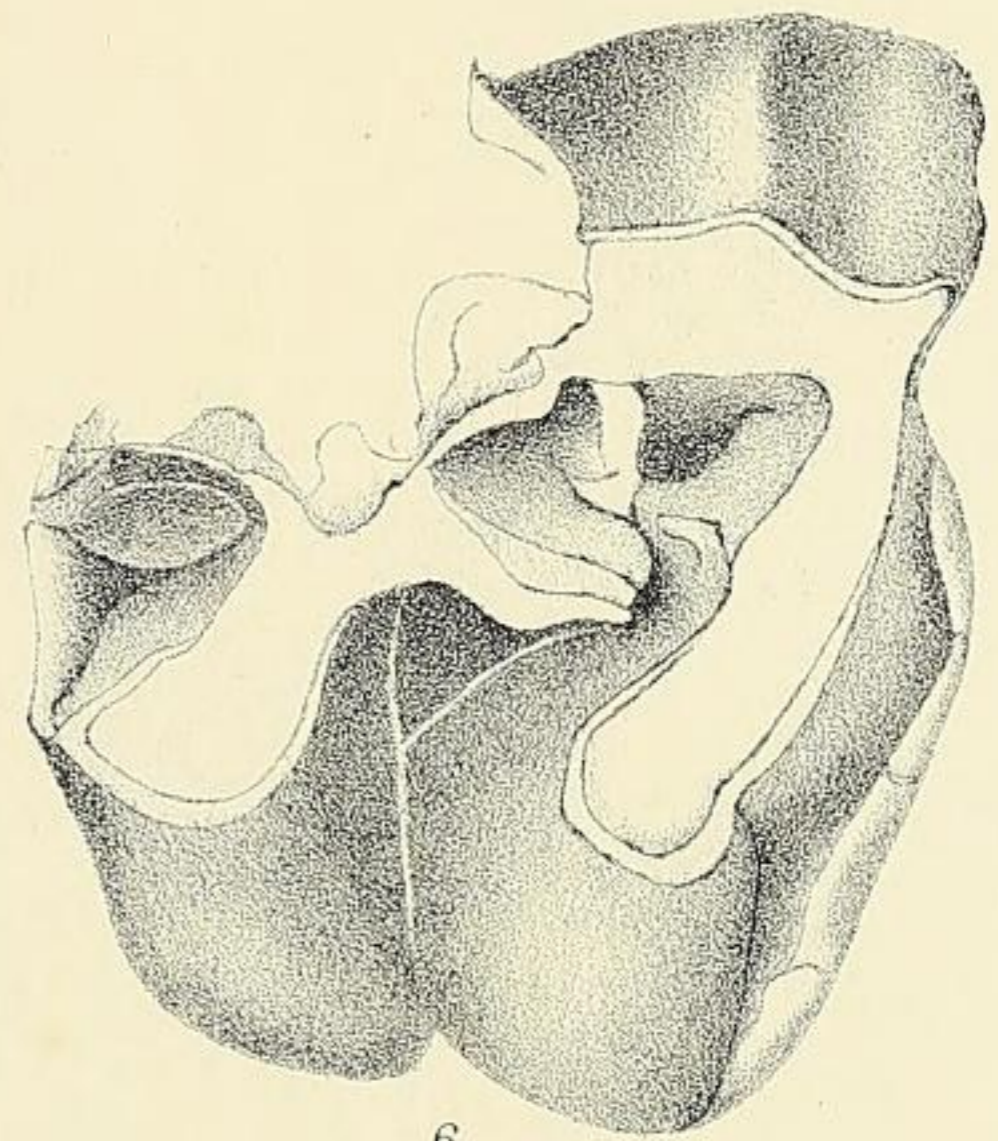
3.



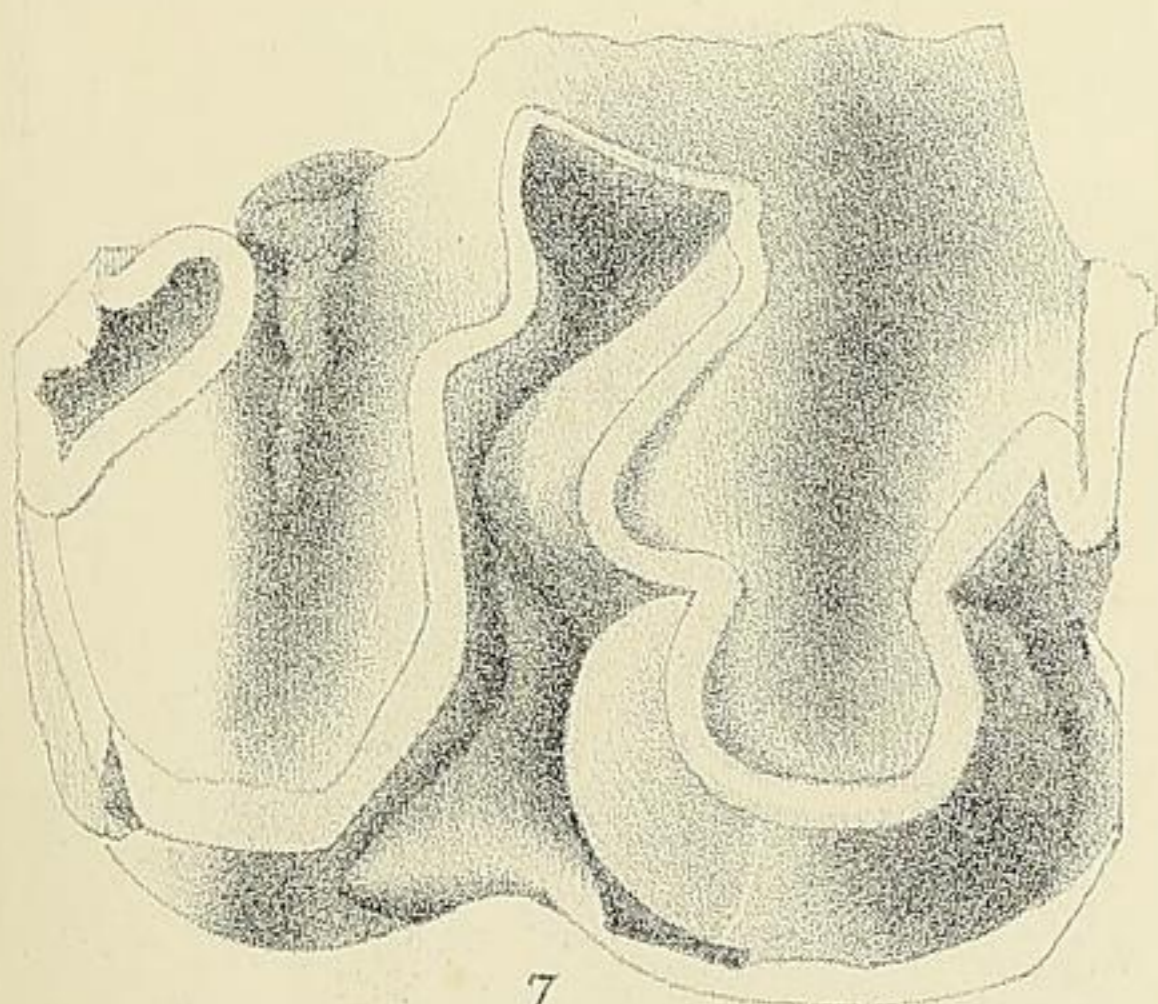
4.



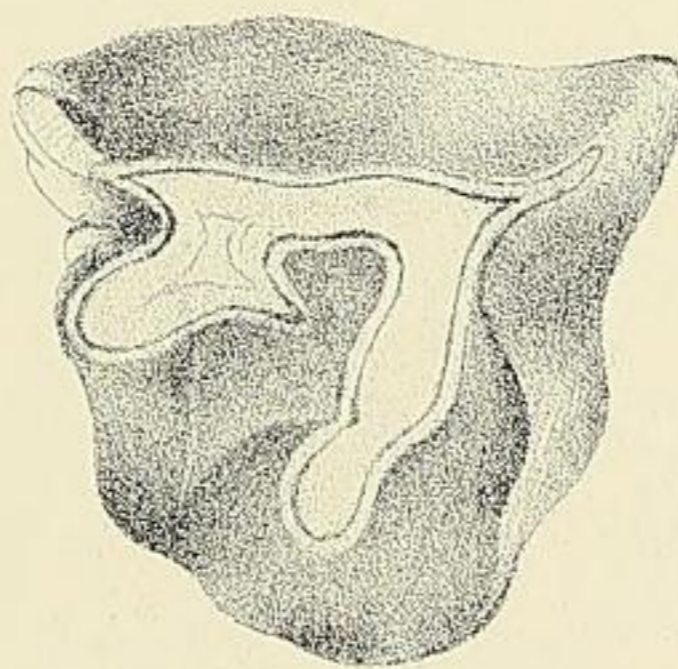
5.



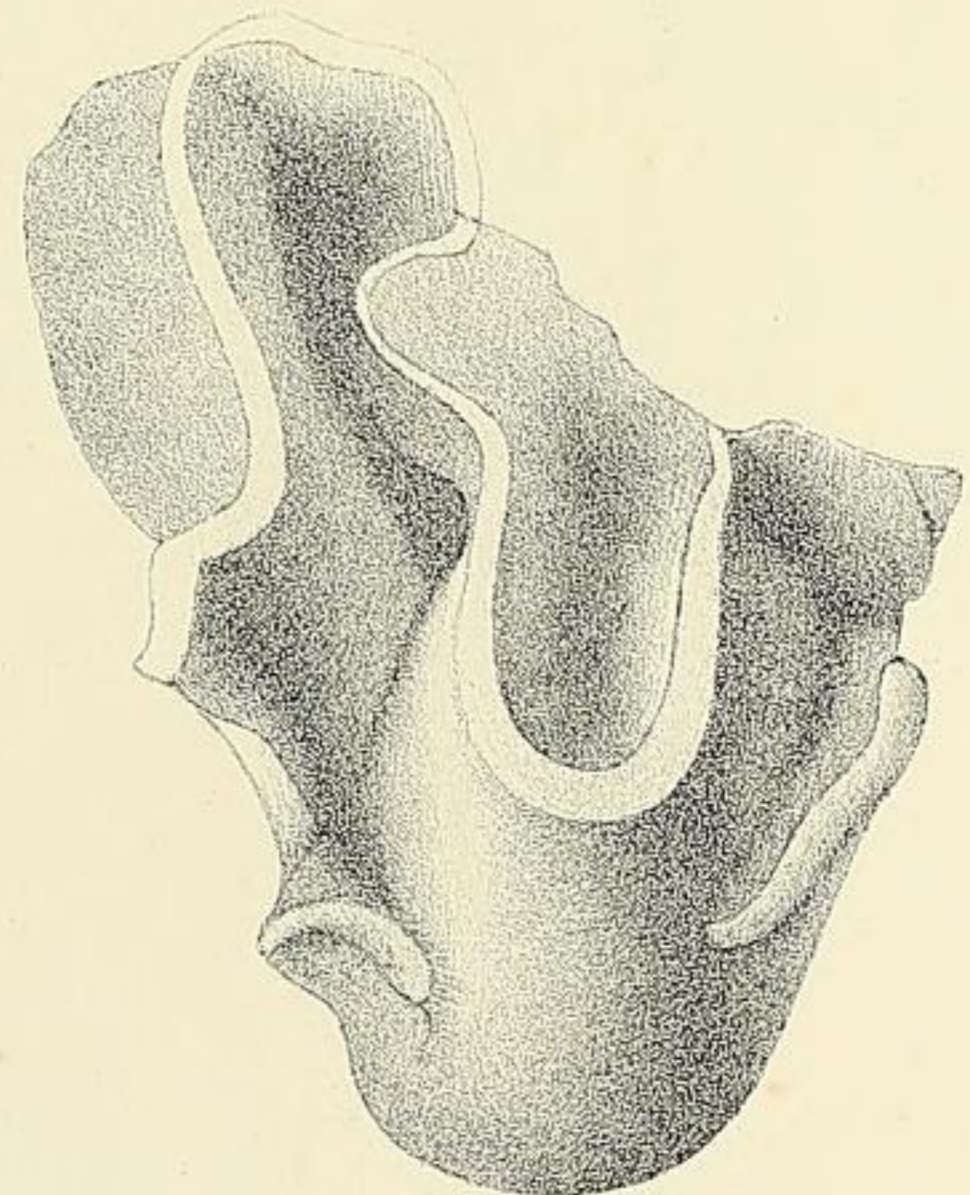
6.



7.



8.



9.

PLATE V.—RHINOCEROS.

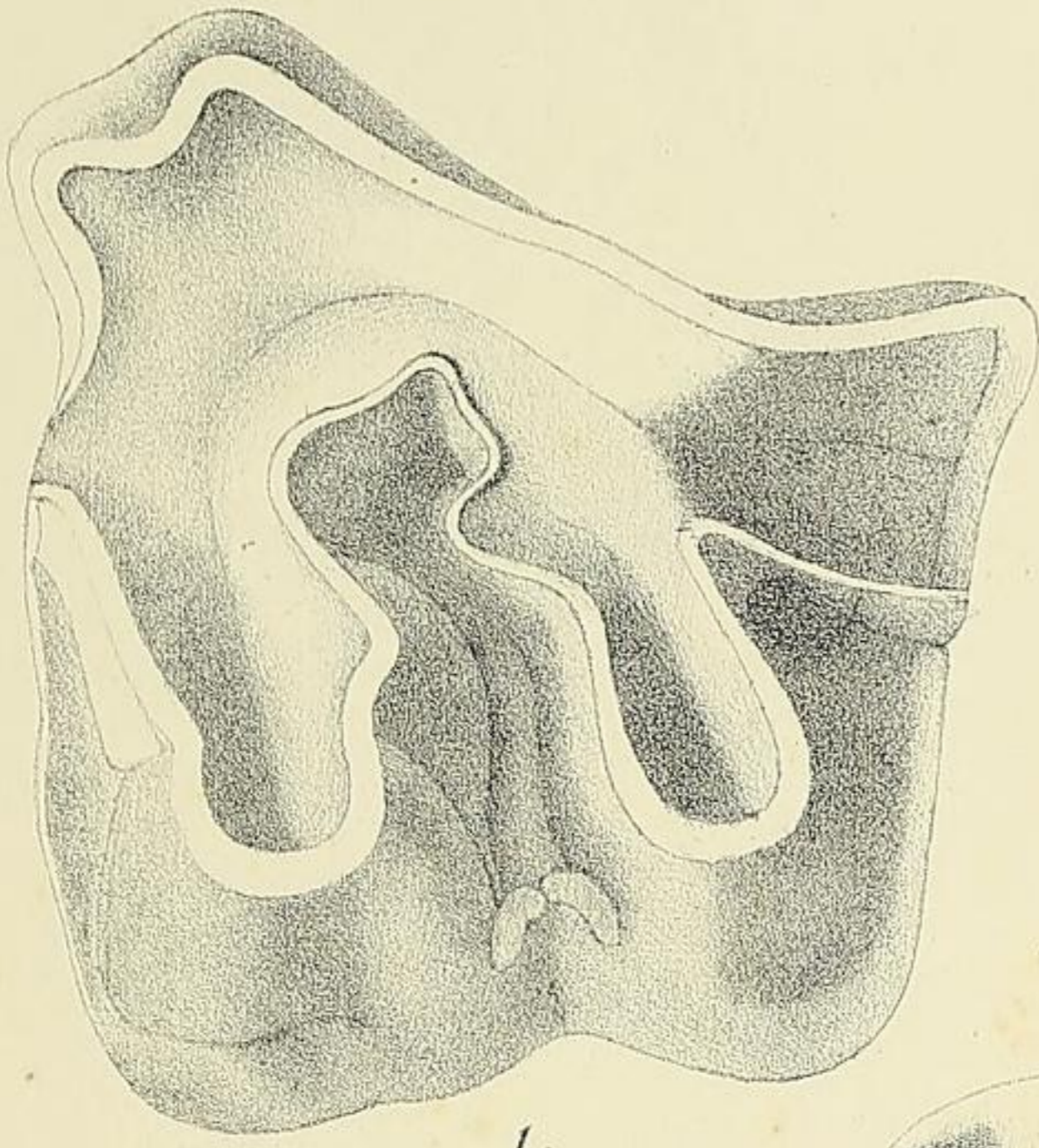
- Fig. ... 1. RHINOCEROS IRAVADICUS, *n. sp. nobis*: 2nd upper molar; left side: specimen found in a Pagoda at Prome and presented to the Indian Museum by Col. Phayre. No. 219.
- Fig. ... 2. RHINOCEROS IRAVADICUS, *n. sp. nobis*: 2nd upper molar; right side. Irawadi Valley. No. 216.
- Fig. ... 3. RHINOCEROS IRAVADICUS, *n. sp. nobis*: portion of occiput. Pegu. No. 251.
- Fig. ... 4. RHINOCEROS SIVALENSIS, *Falc. and Caut.*: 2nd upper molar; left side. Asnot—Siwaliks. No. 780.
- Fig. ... 5. RHINOCEROS, *n. sp. ?* upper premolars; right side. Burma. No. 220.
-

Figure 3 one-third natural size; the rest natural size.

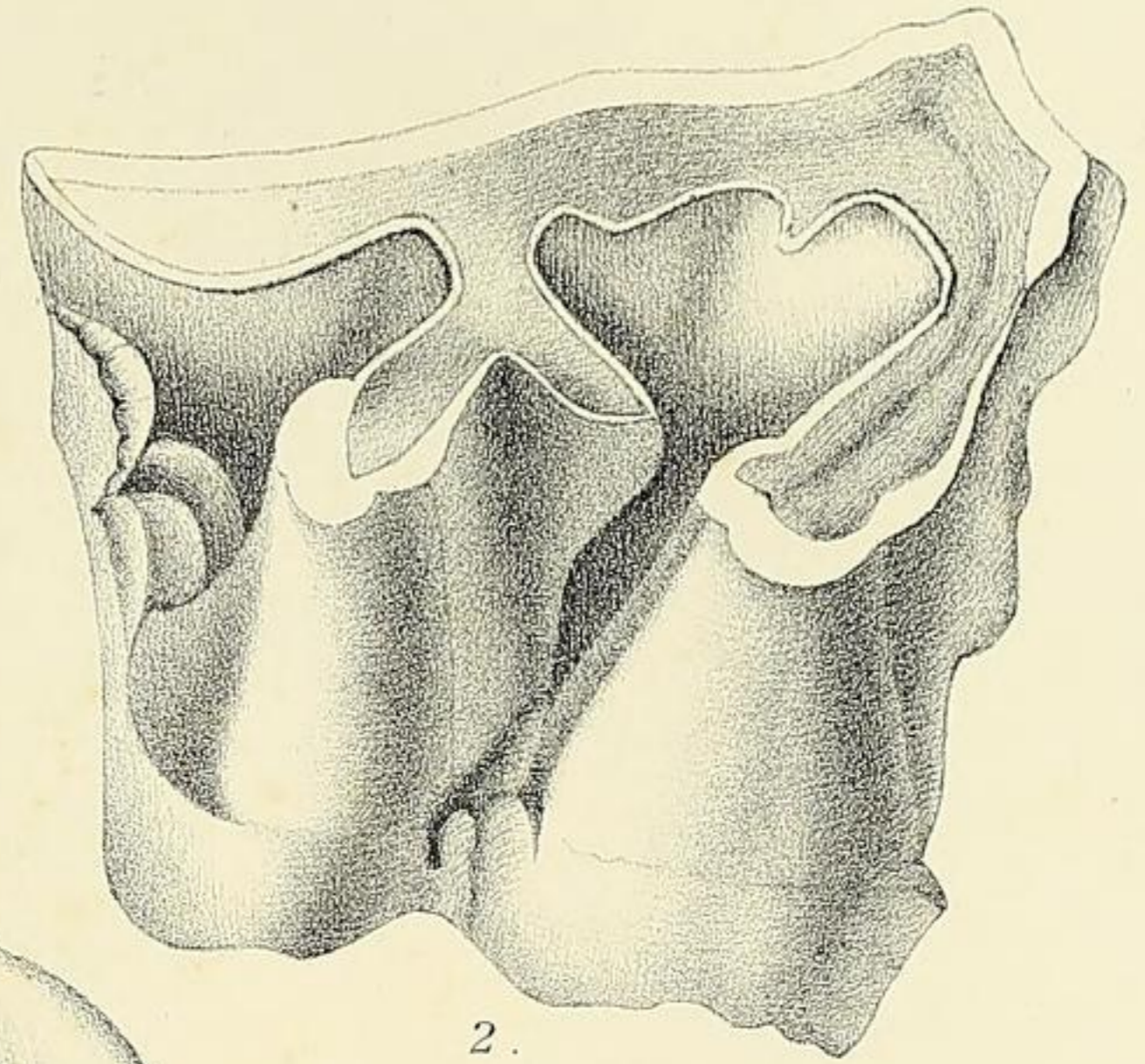
[Reprint.]

PLATE V.

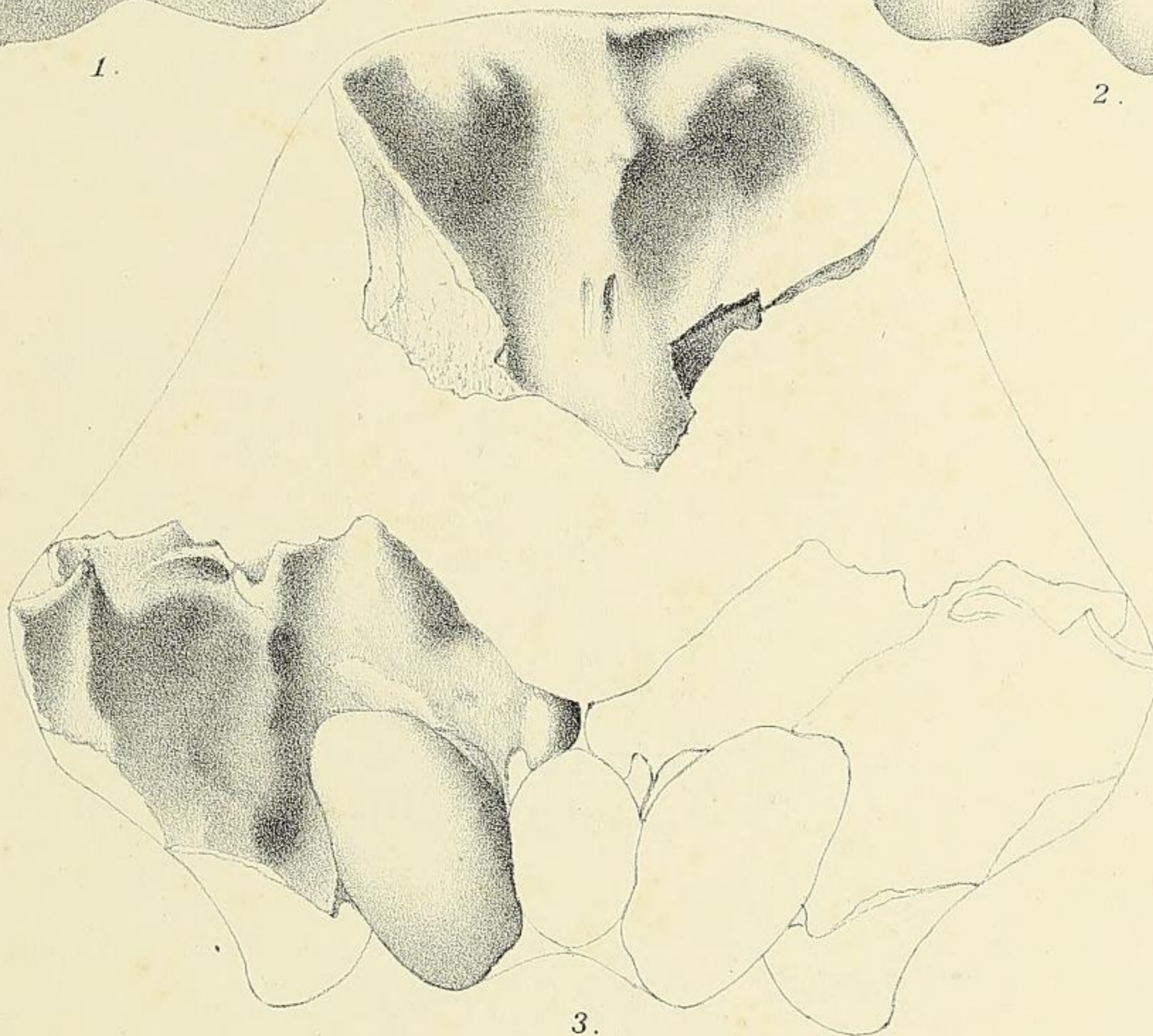
- Fig. 1. RHINOCEROS IRAVADICUS, *n. sp. nobis*: 2nd upper true molar of the left side: specimen found in a pagoda at Prome, and presented to the Indian Museum by Sir A. Phayre.
- Fig. 2. RHINOCEROS IRAVADICUS, *n. sp. nobis*: 2nd upper true molar of the right side: Irawadi valley.
- Fig. 3. RHINOCEROS IRAVADICUS, *n. sp. nobis*: portion of occiput: Pegu.
- Fig. 4. RHINOCEROS IRAVADICUS (?) *n. sp. nobis*: two upper milk-molars of the right side: Burma: described in text as being the premolars of a possibly new species.
- Fig. 5. RHINOCEROS SIVALENSIS, Falc. & Caut.: 2nd upper true molar of the left side: Siwalik.
Fig. 3 one-third natural size; the rest natural size.



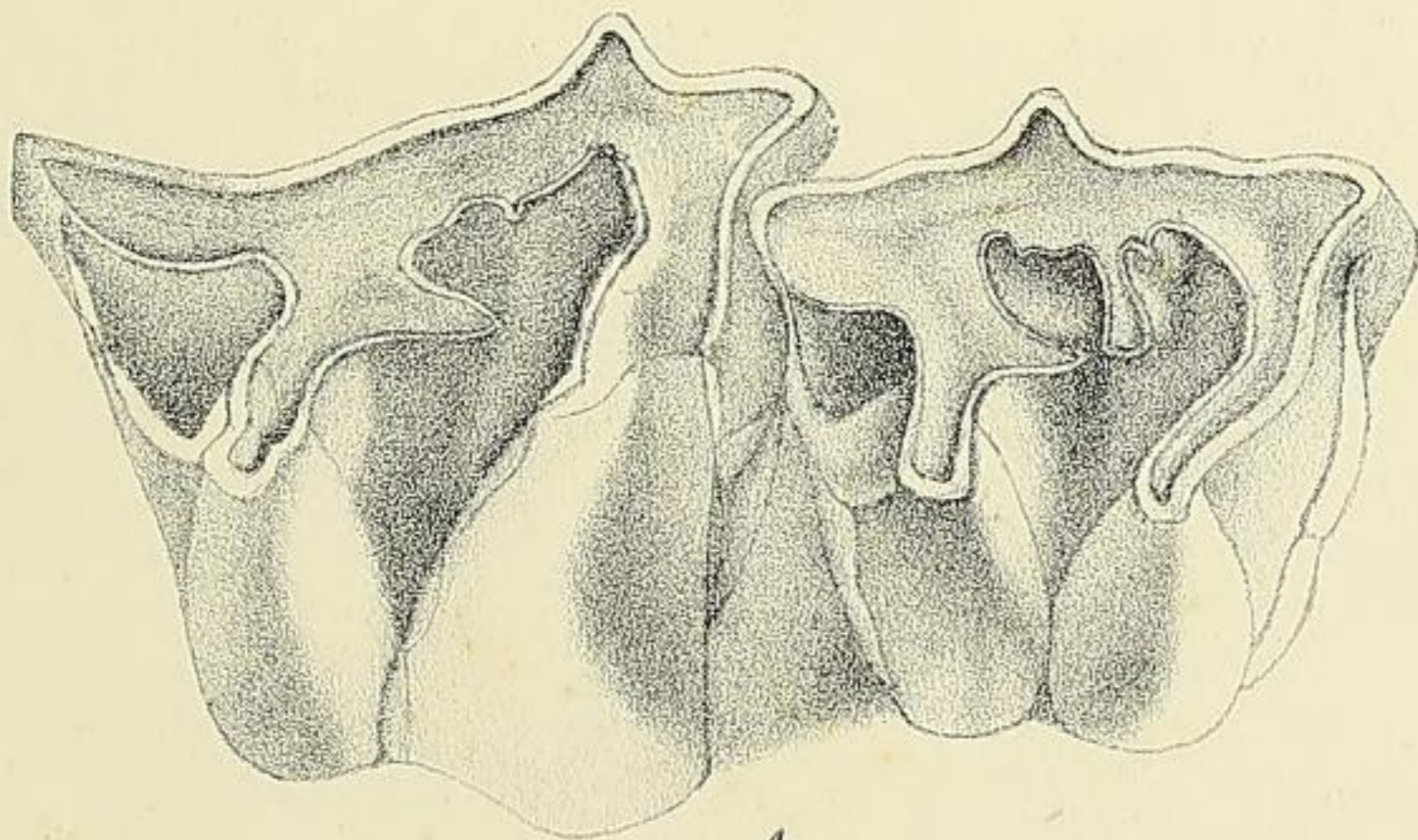
1.



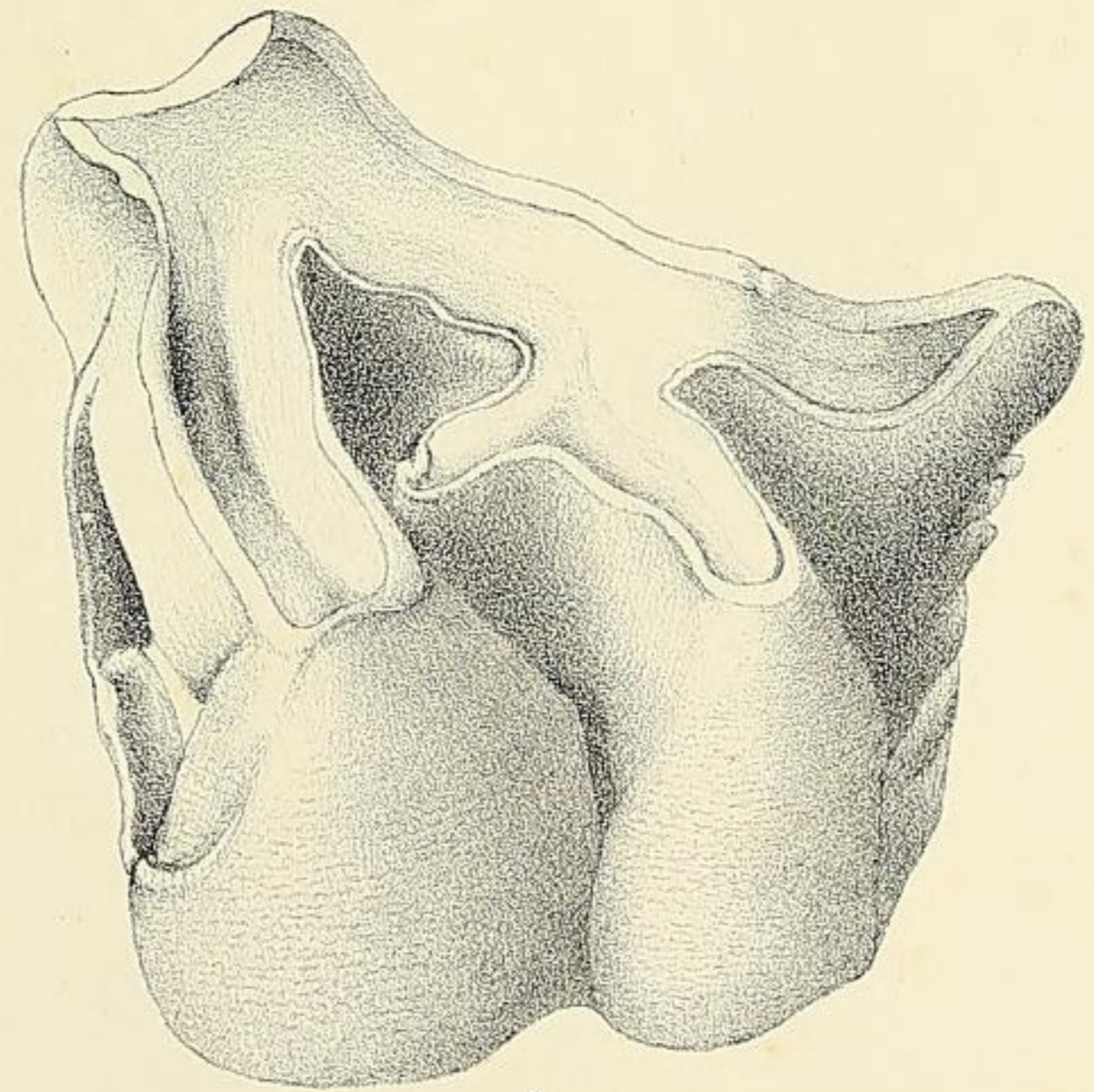
2.



3.



4.



5.

PLATE VI.—RHINOCEROS AND ACEROTHERIUM.

- Fig. ... 1. RHINOCEROS SIVALENSIS, *Falc. and Caut.*: 3rd lower molar; right side. Pinjor—
Siwaliks. No. $\frac{S}{65}$.
- Fig. ... 2. ACEROTHERIUM PERIMENSE, *Falc. and Caut.*: 1st upper molar; left side. Gadari—
Siwaliks. No. 55.
- Fig. ... 3. RHINOCEROS, *n. sp. ?* lower molar; right side. Attock—Nahans (?).
- Fig. ... 4. RHINOCEROS PLATYRHINUS, *Falc. and Caut.*: lower premolar; right side. Siwaliks.
- Fig. ... 5. ACEROTHERIUM PERIMENSE, *Falc. and Caut.*: upper molars; right side. Perim
Island. A. S. B. No. $\frac{P.I.}{30}$.
- Fig. ... 6. RHINOCEROS (*sp.*): upper premolar; left side. Manchhar beds—Sind. No. G. $\frac{280}{6}$.
- Fig. ... 7. RHINOCEROS *n. sp. ?* 1st lower molar; right side. Siwaliks. A. S. B. No. $\frac{S}{322}$.
- Fig. ... 8. RHINOCEROS PALÆINDICUS: lower molar; left side. Manchhar beds. Sind.
No. 494.
- Fig. ... 9. RHINOCEROS (*sp.*): upper premolar; left side. Siwaliks. No. 174.
- Fig. ... 10. RHINOCEROS (*sp.*): 4th upper premolar; left side. Siwaliks. A. S. B. No. $\frac{S}{324}$

All the figures natural size.

[Reprint.]

PLATE VI.

- Fig. 1. RHINOCEROS SIVALENSIS (?) Falc. & Caut. : 3rd lower true molar of the right side : Siwalik.
Fig. 2. ACEROTHERIUM PERIMENSE, Falc. & Caut.. : 3rd upper premolar of the left side : Siwalik :
described in text as first true molar
Fig. 3. RHINOCEROS, sp. : lower molar of the right side : near Attock.
Fig. 4. RHINOCEROS PLATYRHINUS (?) Falc. & Caut. : lower premolar of the right side : Siwalik.
Fig. 5. ACEROTHERIUM PERIMENSE, Falc. & Caut. : 2nd and 3rd upper premolars of the left side :
Perim Island : described in text as 1st premolar and first true molar.
Fig. 6. ACEROTHERIUM PERIMENSE, Falc. & Caut. : the 2nd (?) upper premolar of the right
side : Sind : described in text as left premolar of a *Rhinoceros*.
Fig. 7. RHINOCEROS, sp., 1st lower molar of the right side : Siwalik.
Fig. 8. RHINOCEROS PALEINDICUS (?) Lower molar of the left side : Sind.
Fig. 9. RHINOCEROS sp. : upper premolar, or milk-molar of the left side, probably abnormal
Siwalik.
Fig. 10. RHINOCEROS PLATYRHINUS (?) An anterior upper milk-molar of the right side : Siwalik.
All the figures natural size.

