

PLATE I.

ACEROTHERIUM PERIMENSE, Falconer and Cautley.

Cranium of an adult, viewed from the left side (fig. 1), and from the front (fig. 2): from the Punjab. One-third natural size. (No. C. 1, Ind. Mus.)

TERTIARY VERTEBRATA.

Geol. Surv. of India.

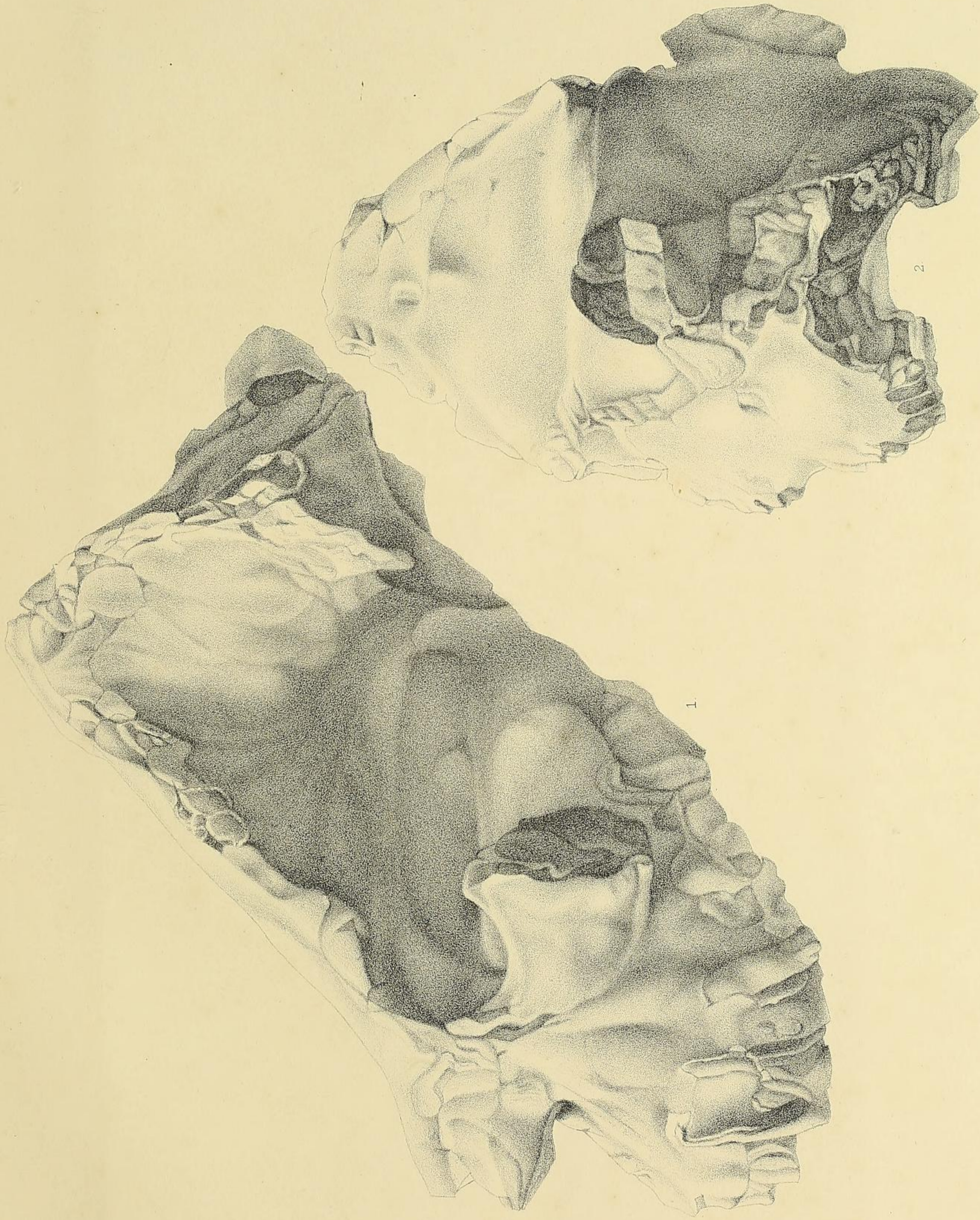
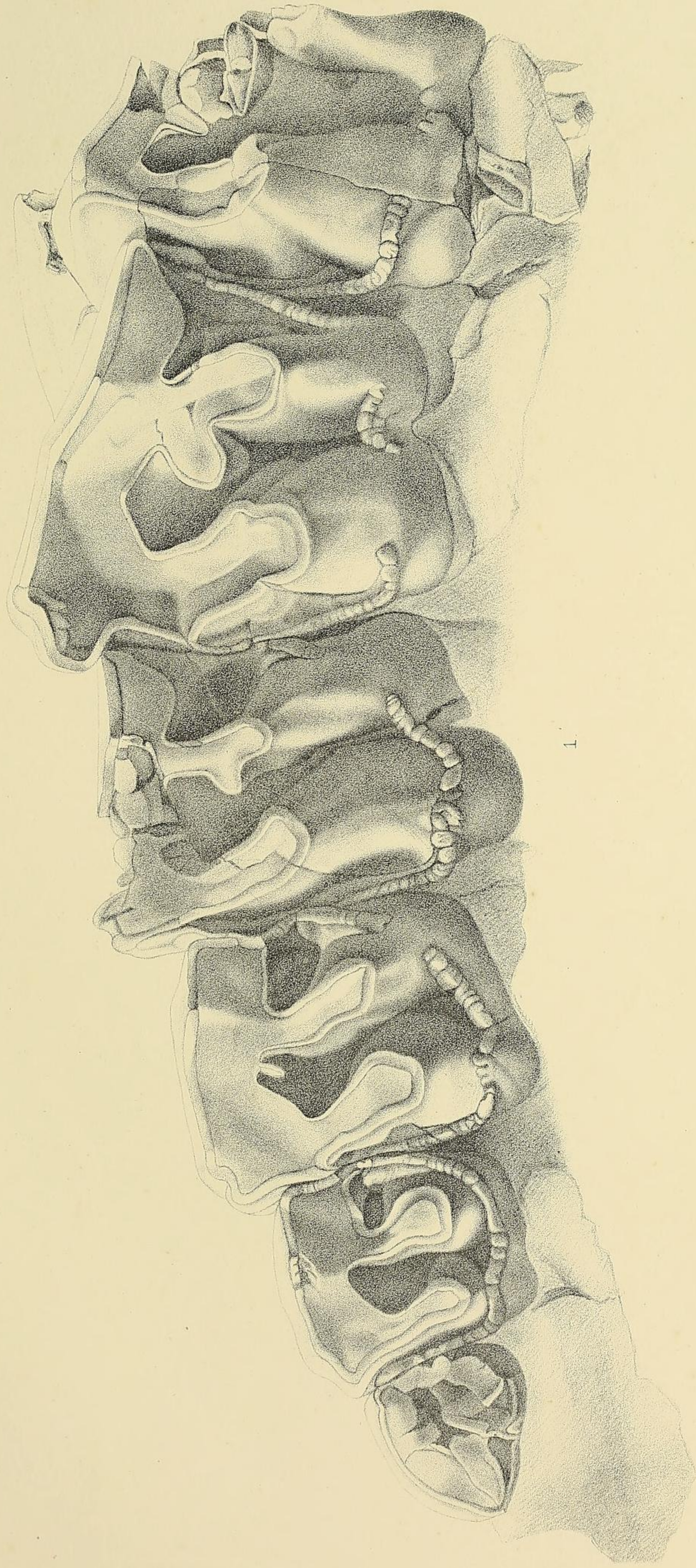


PLATE II.

ACEROTHERIUM PERIMENSE, Falconer and Cautley.

A portion of the left upper molar series, showing the four premolars, and the first, and part of the second true molar : from the Punjab : natural size, and viewed from the inner side. (No. C. 2, Ind. Mus.)



1

PLATE IIA.

ACEROTHERIUM PERIMENSE, Falconer and Cautley.

The right upper molar series, from a palate specimen in the Museum of the Bombay Branch of the Royal Asiatic Society : from Perim Island : natural size, and viewed from the inner side.



PLATE III.

ACEROTHERIUM PERIMENSE, Falconer and Cautley.

- Fig. 1. Part of the left ramus of a young mandible, showing the first true molar in its alveolus.
(No. C. 238, Ind. Mus.)
- „ 2. Second and third left upper milk-molars. (No. C. 18, Ind. Mus.)
- „ 3. Second right upper true molar. (No. C. 7, Ind. Mus.)
- „ 4. Left upper incisor, viewed from the inner side; the inferior border on the left.
(No. C. 14, Ind. Mus.)
- „ 5. Third right upper true molar (No. C. 3, Ind. Mus.)

All the specimens are drawn of the natural size, and were obtained from the Siwaliks of the Punjab.

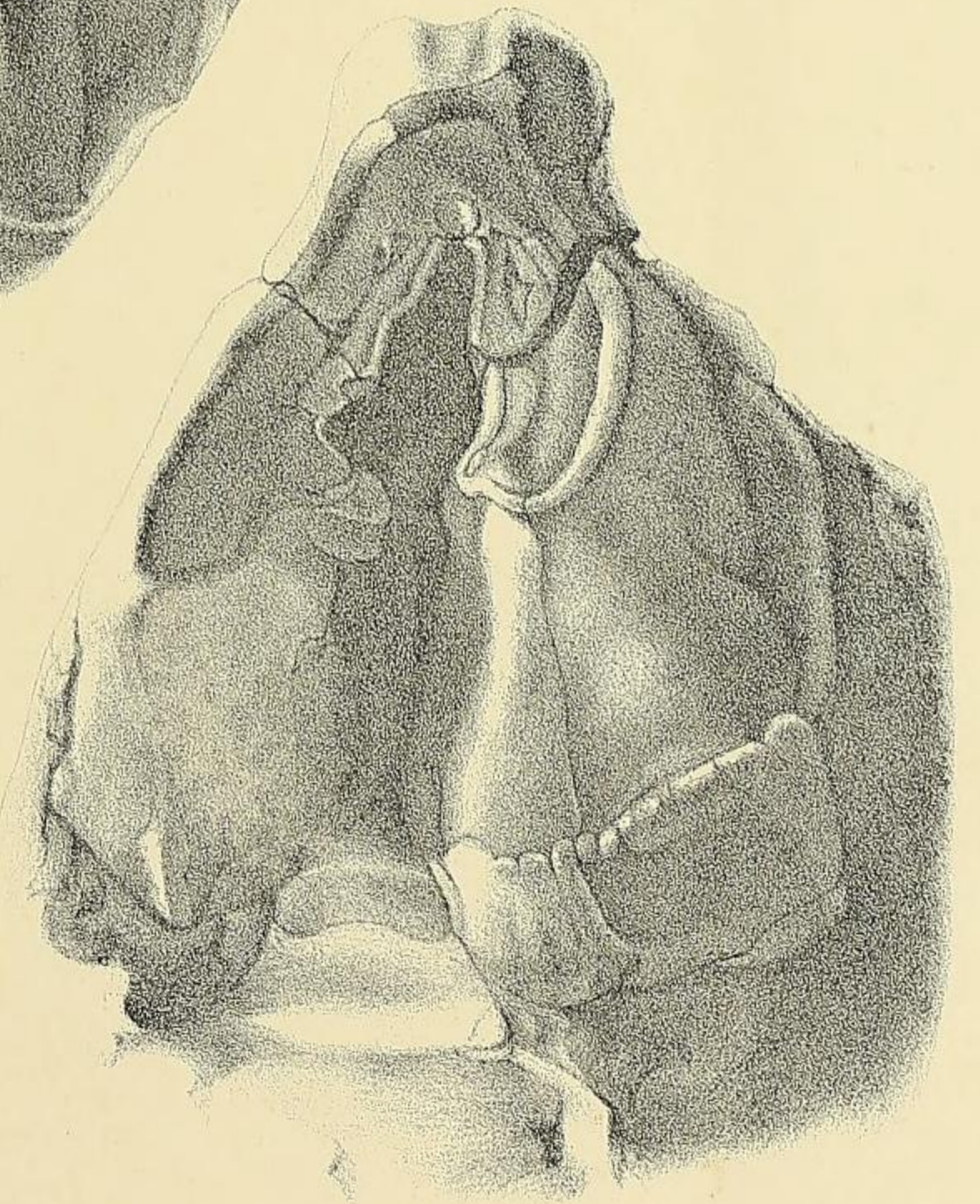
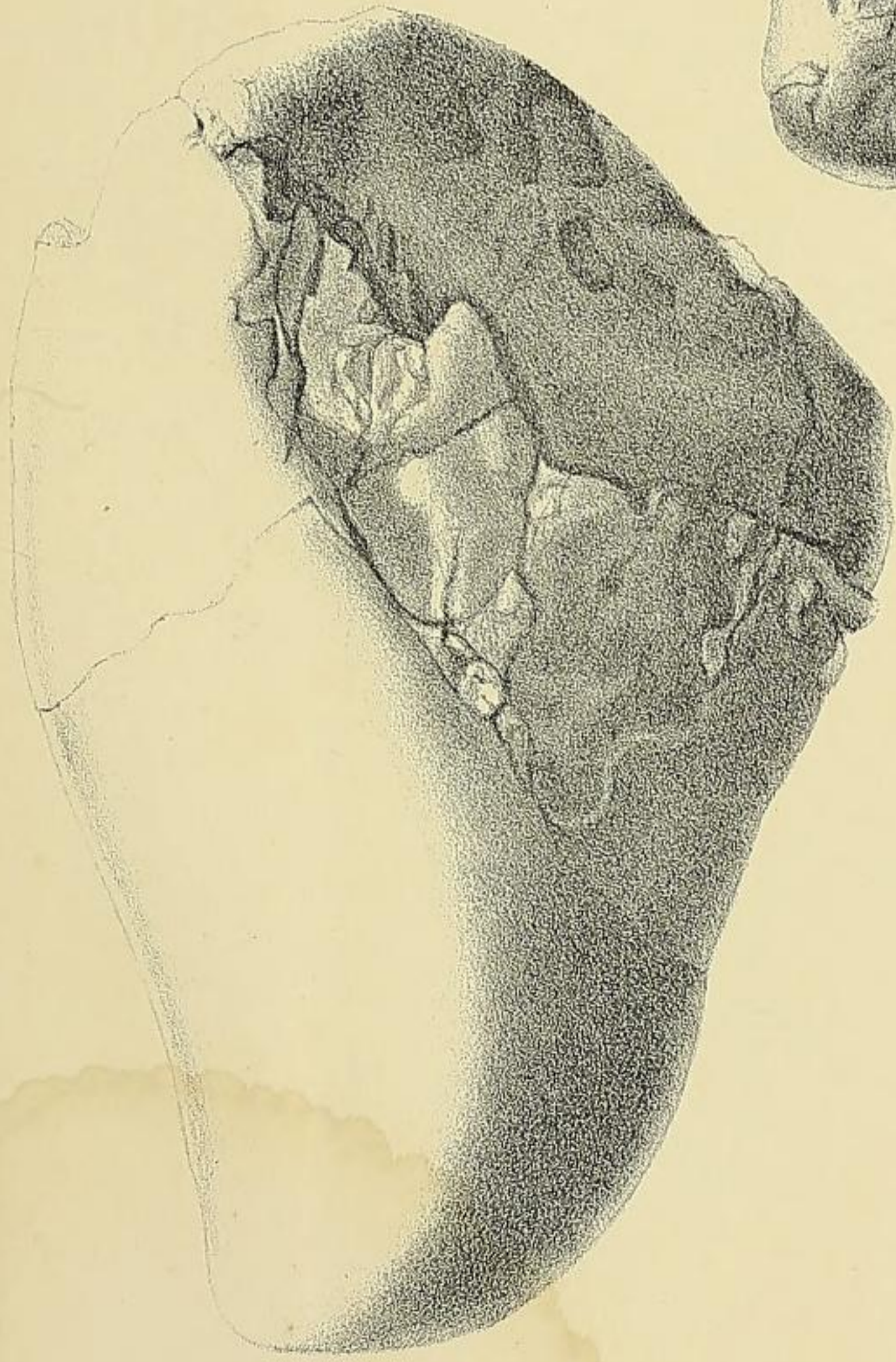
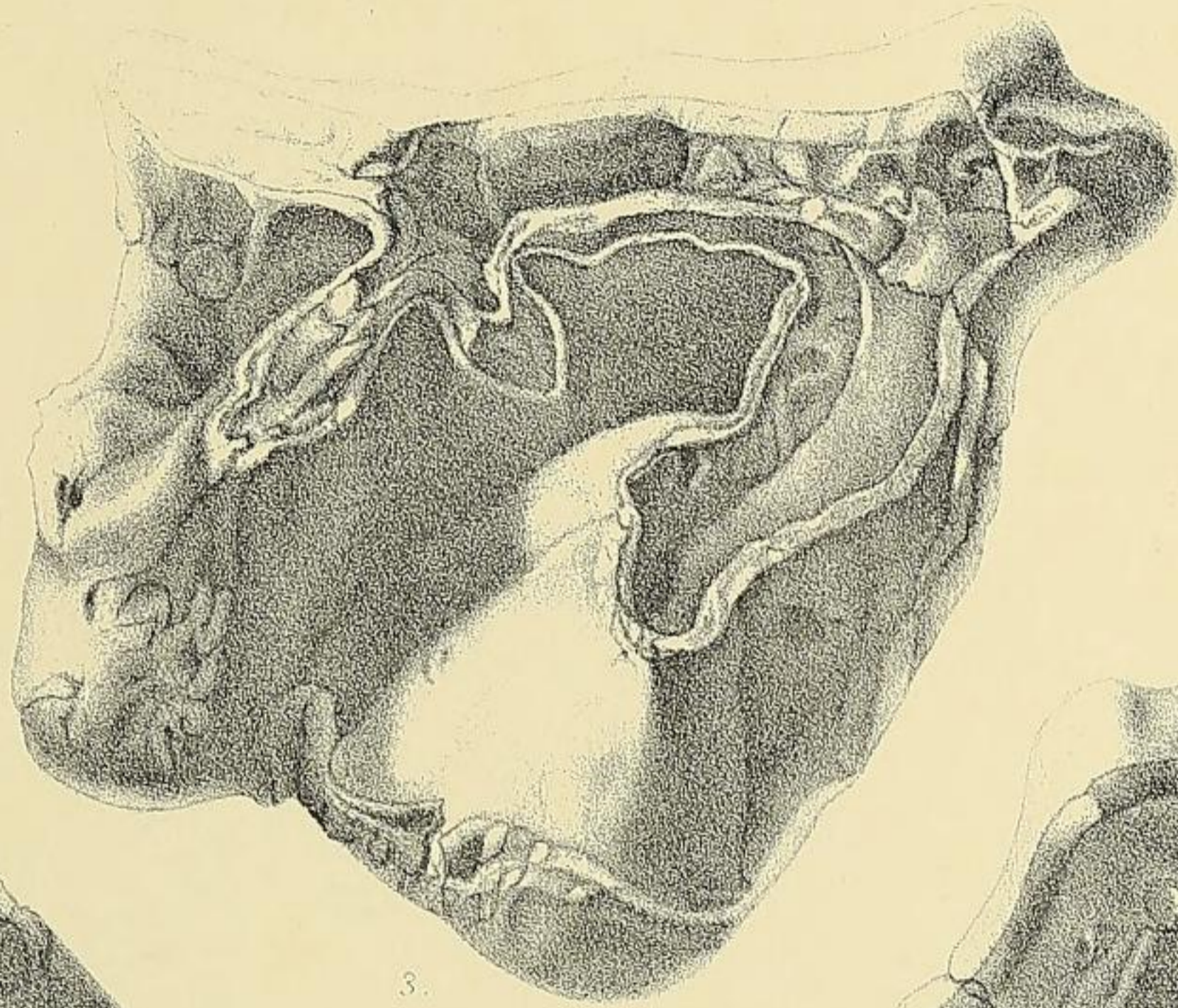
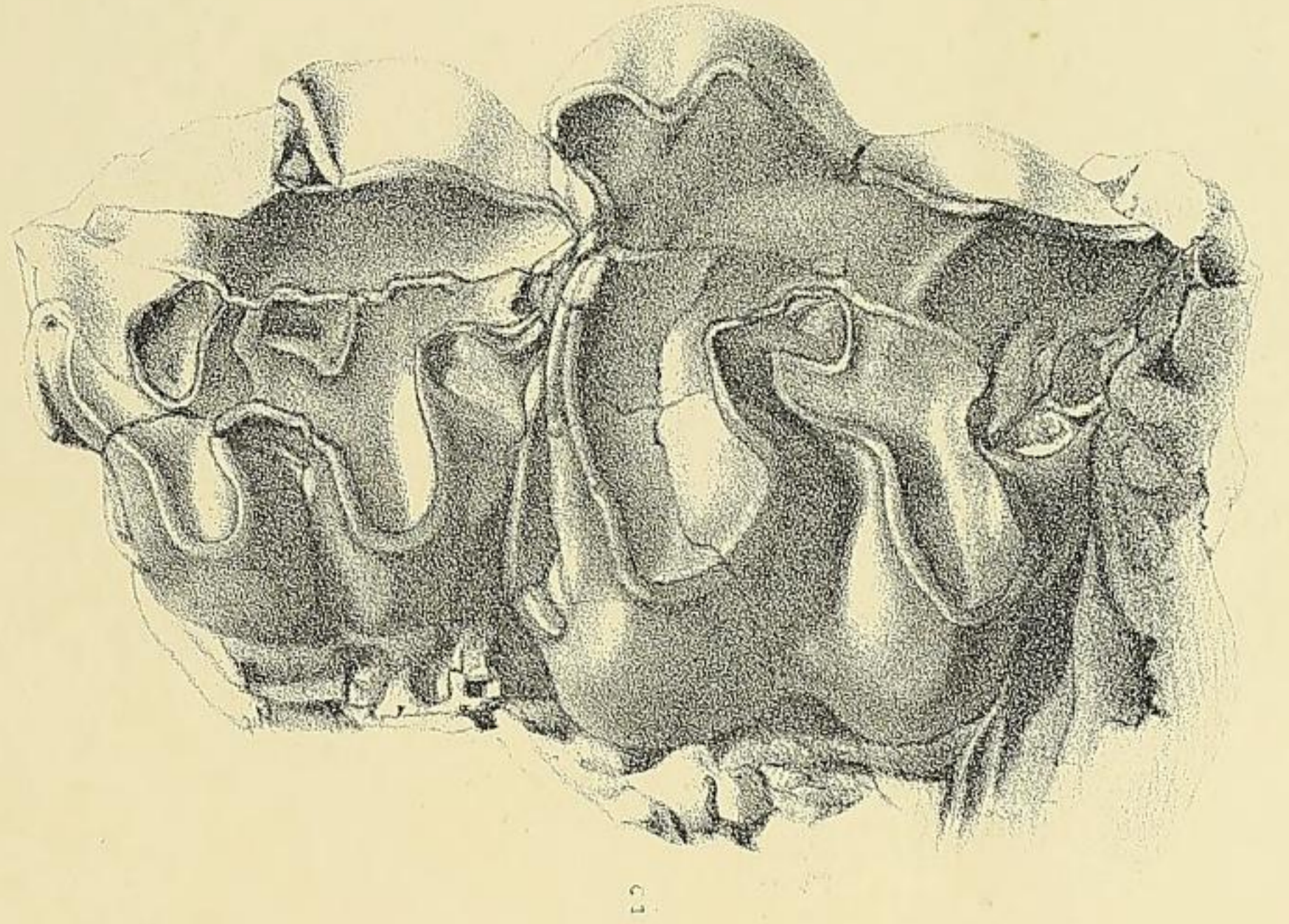
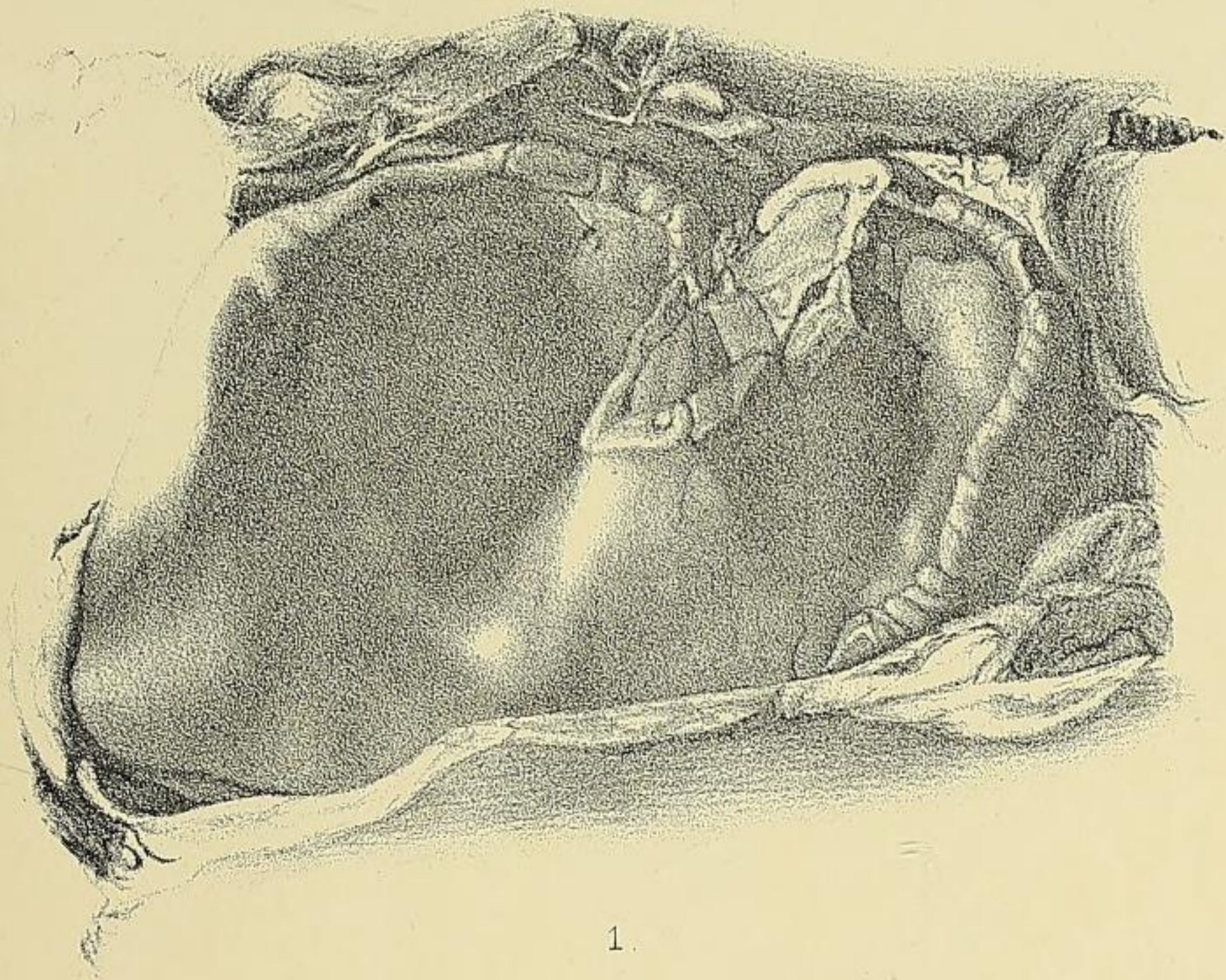


PLATE IV.

ACEROTHERIUM PERIMENSE, Falconer and Cautley.

- Fig. 1. The symphysis and part of the right ramus of the mandible, showing incisor, premolars and first true molar, viewed from the outer side.
- „ 2. The first and second true molars of the opposite side of the same mandible, viewed from the outer side: from the Punjab. Both figures are of the natural size. (No. C. 4, Ind. Mus.)

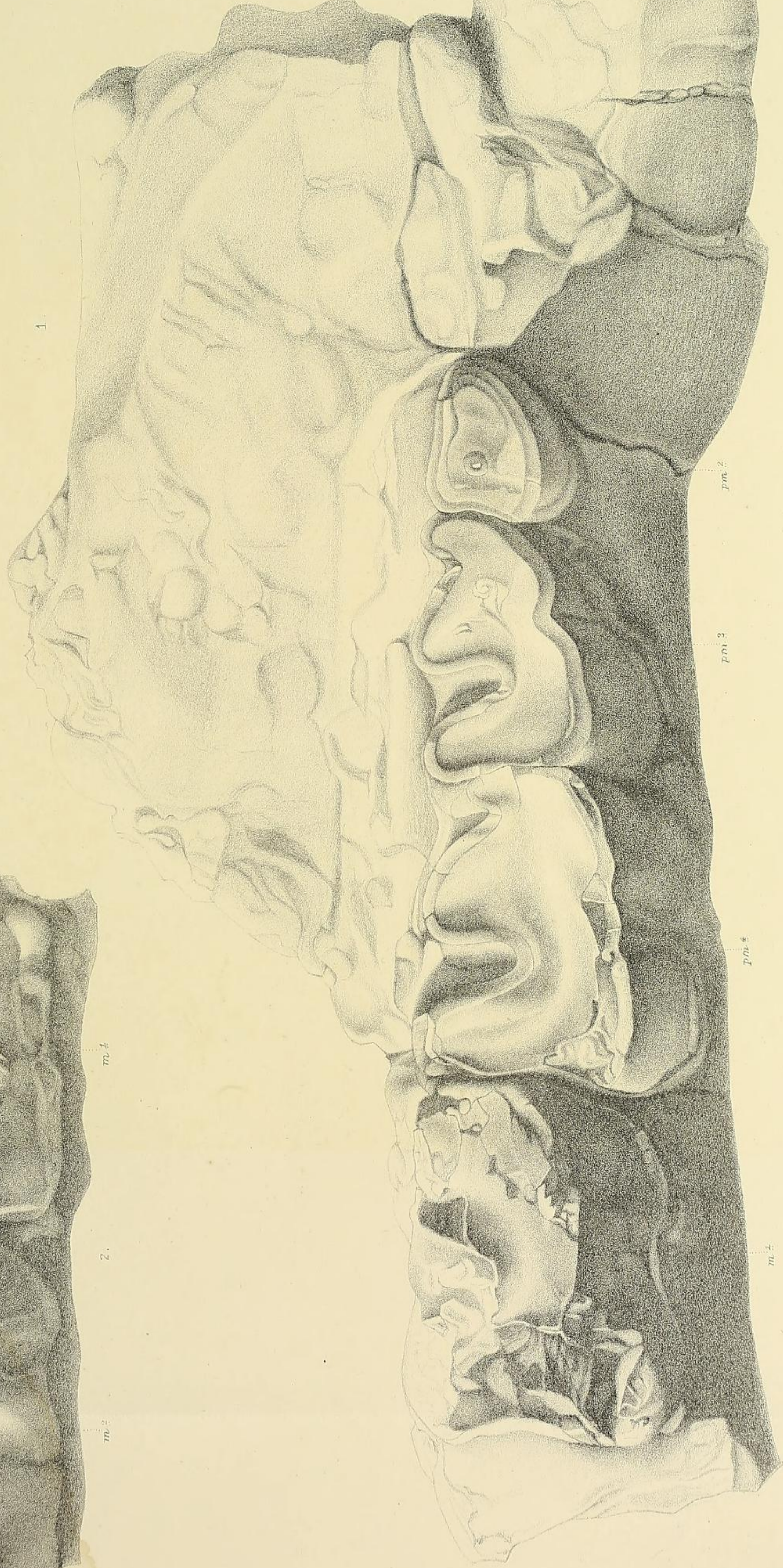
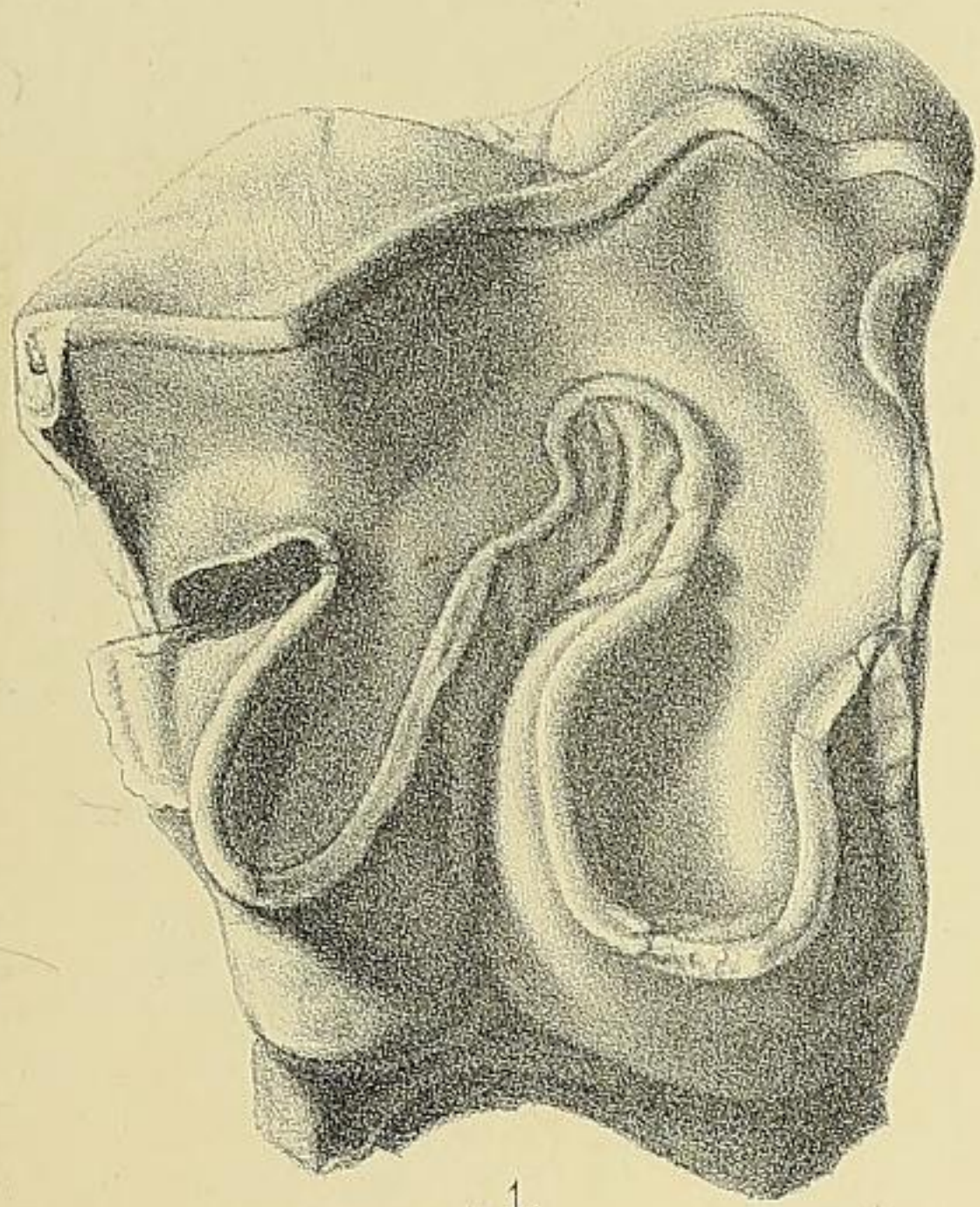


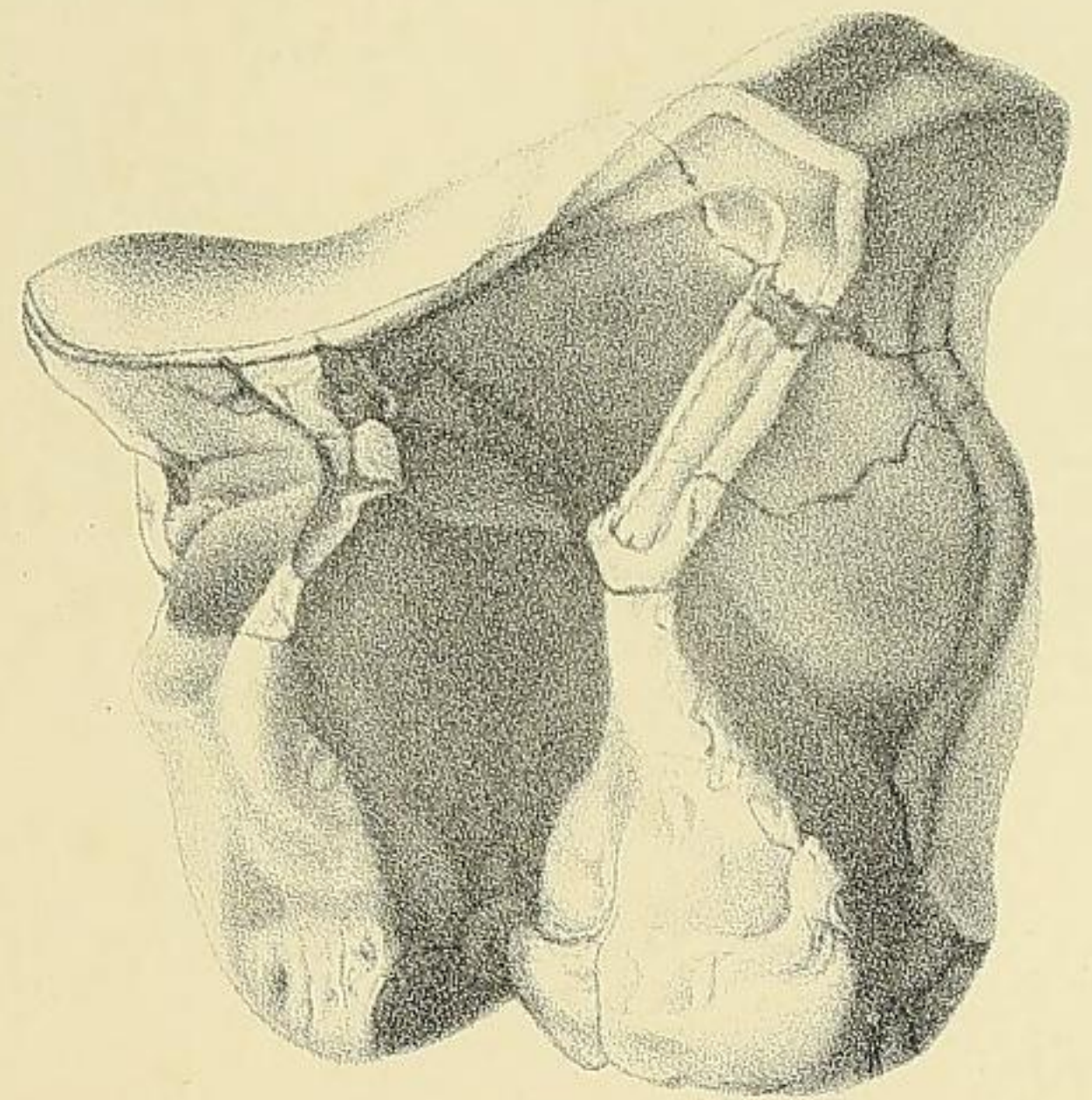
PLATE V.

RHINOCEROS SIVALENSIS, Falconer and Cautley.

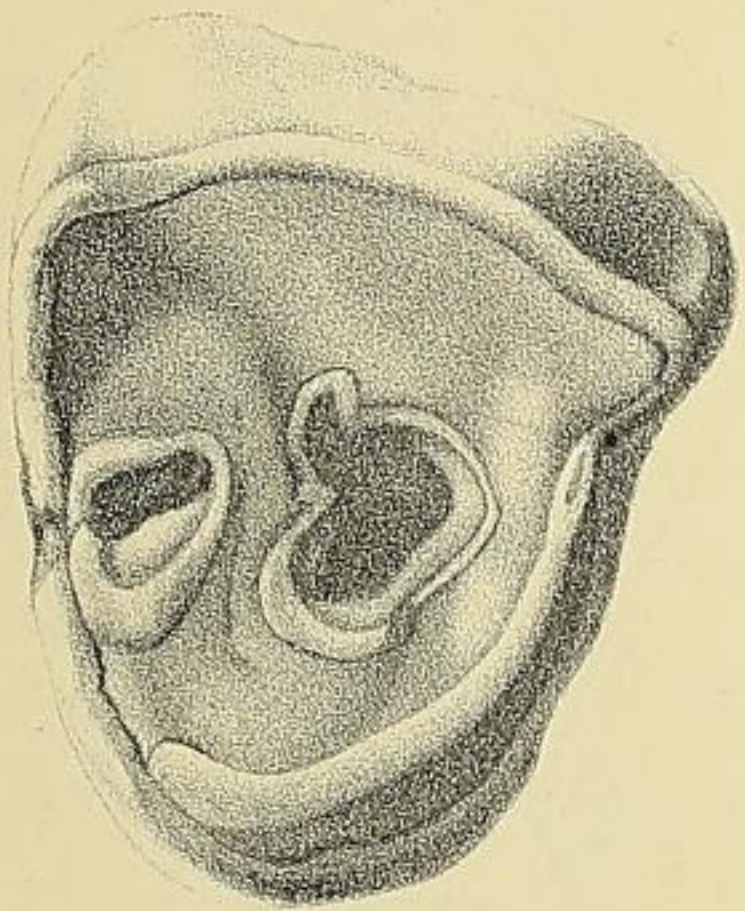
- Fig. 1. Second right upper true molar : half worn : from the Punjab. (No. C. 23, Ind. Mus.)
- „ 2. Second right upper true molar : slightly touched by wear : from the lower Manchhar group of Sind. (No. C. 34, Ind. Mus.)
- „ 3. Second left upper premolar : much worn : from the Punjab. (No. C. 77, Ind. Mus.)
- „ 4. Last left upper true molar : in an intermediate state of wear : from the Punjab. (No. C. 11, Ind. Mus.)
- „ 5. First, or second, left upper true molar : in germ : from the Punjab. (No. C. 37, Ind. Mus.)
- „ 6. Third right upper premolar : one-third worn : from the Punjab (No. C. 26, Ind. Mus.)
- „ 7. Var. GAJENSIS. First, or second, right upper true molar : partly broken : from the Gáj group of Sind. (No. C. 36, Ind. Mus.)



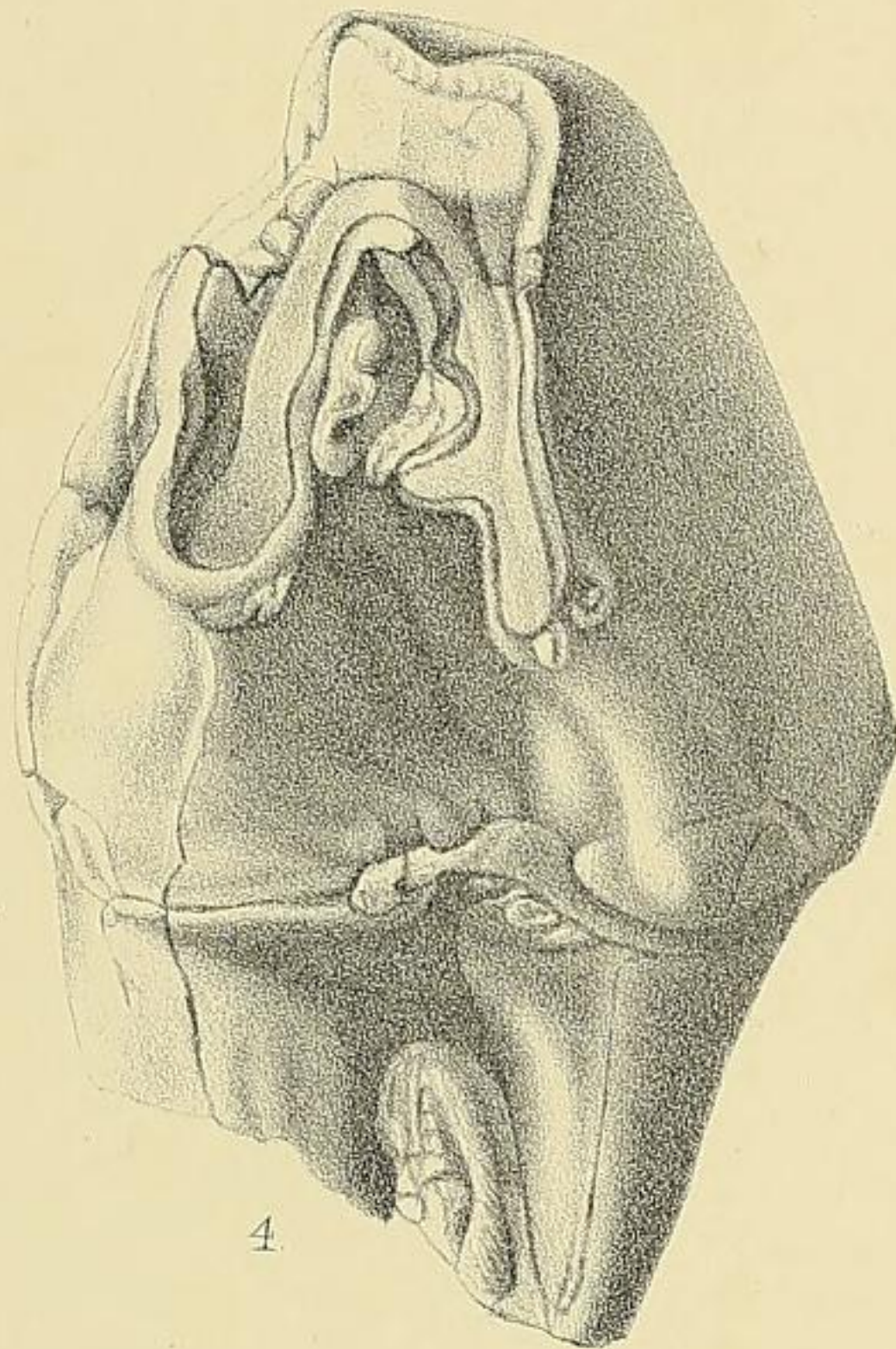
1.



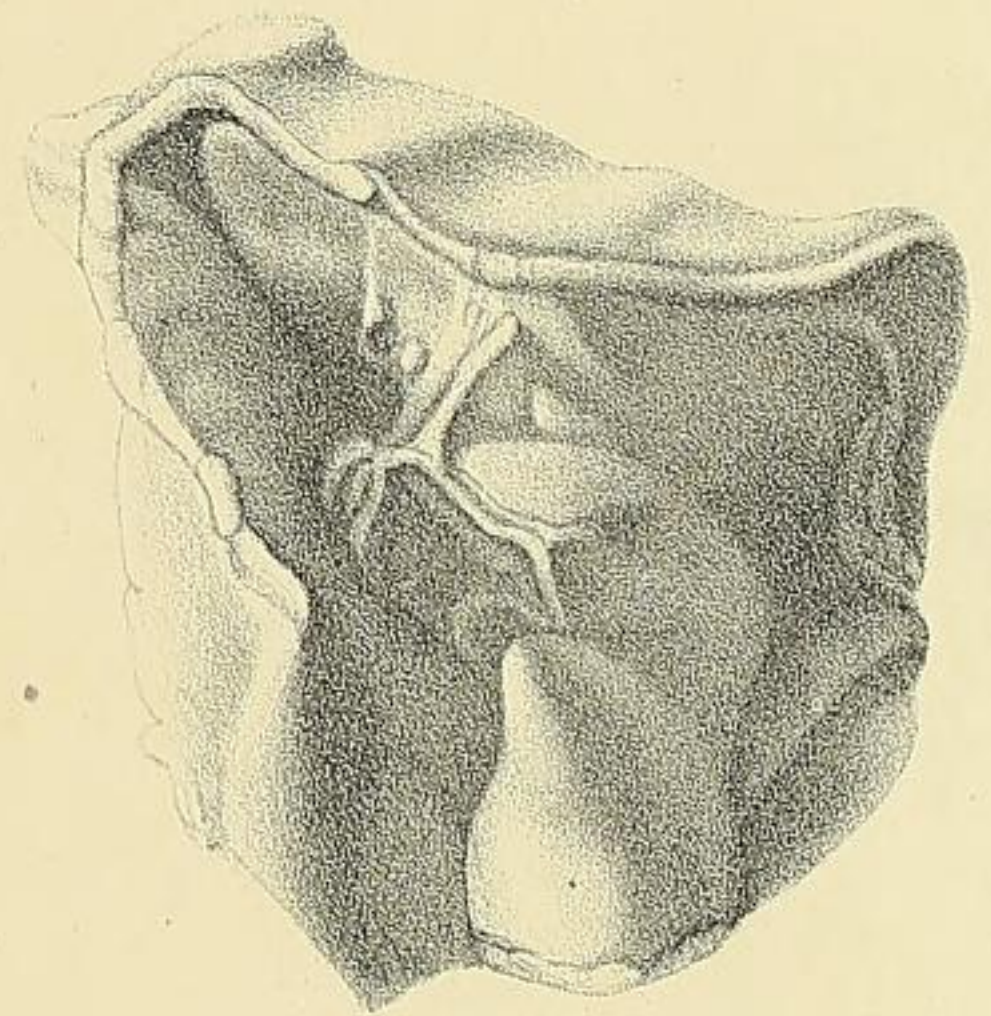
2.



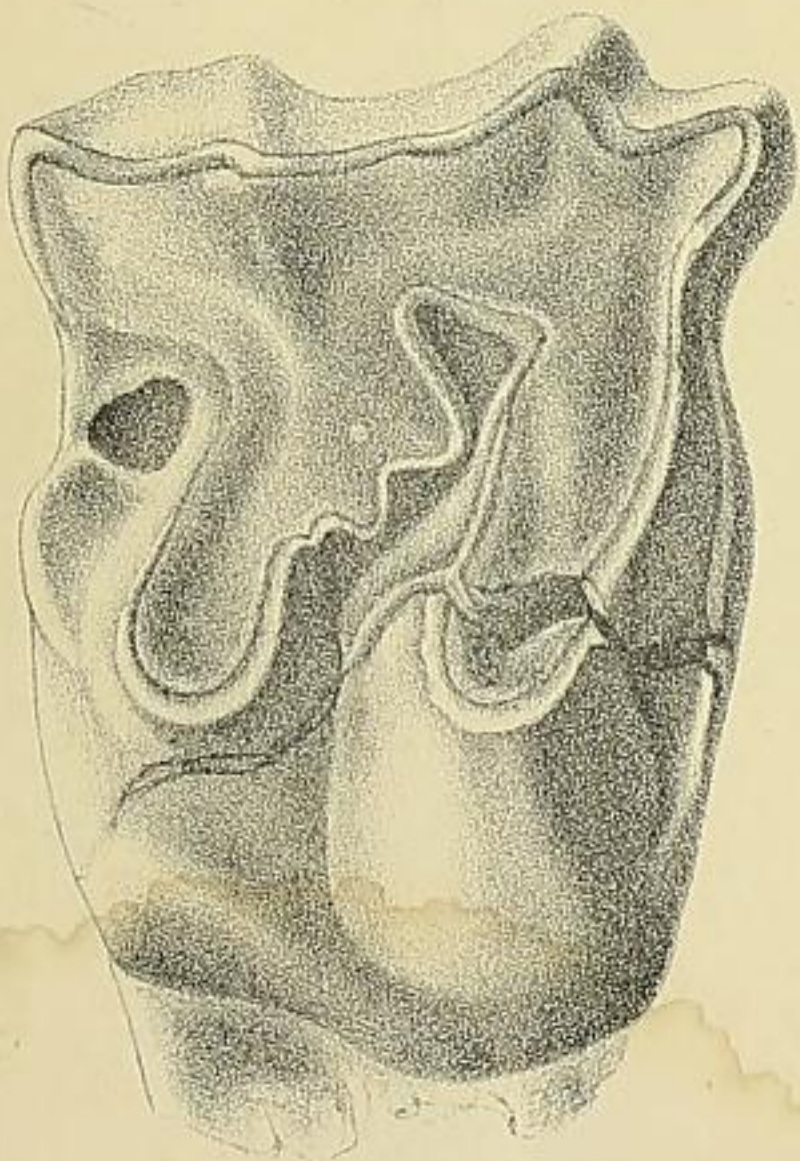
3.



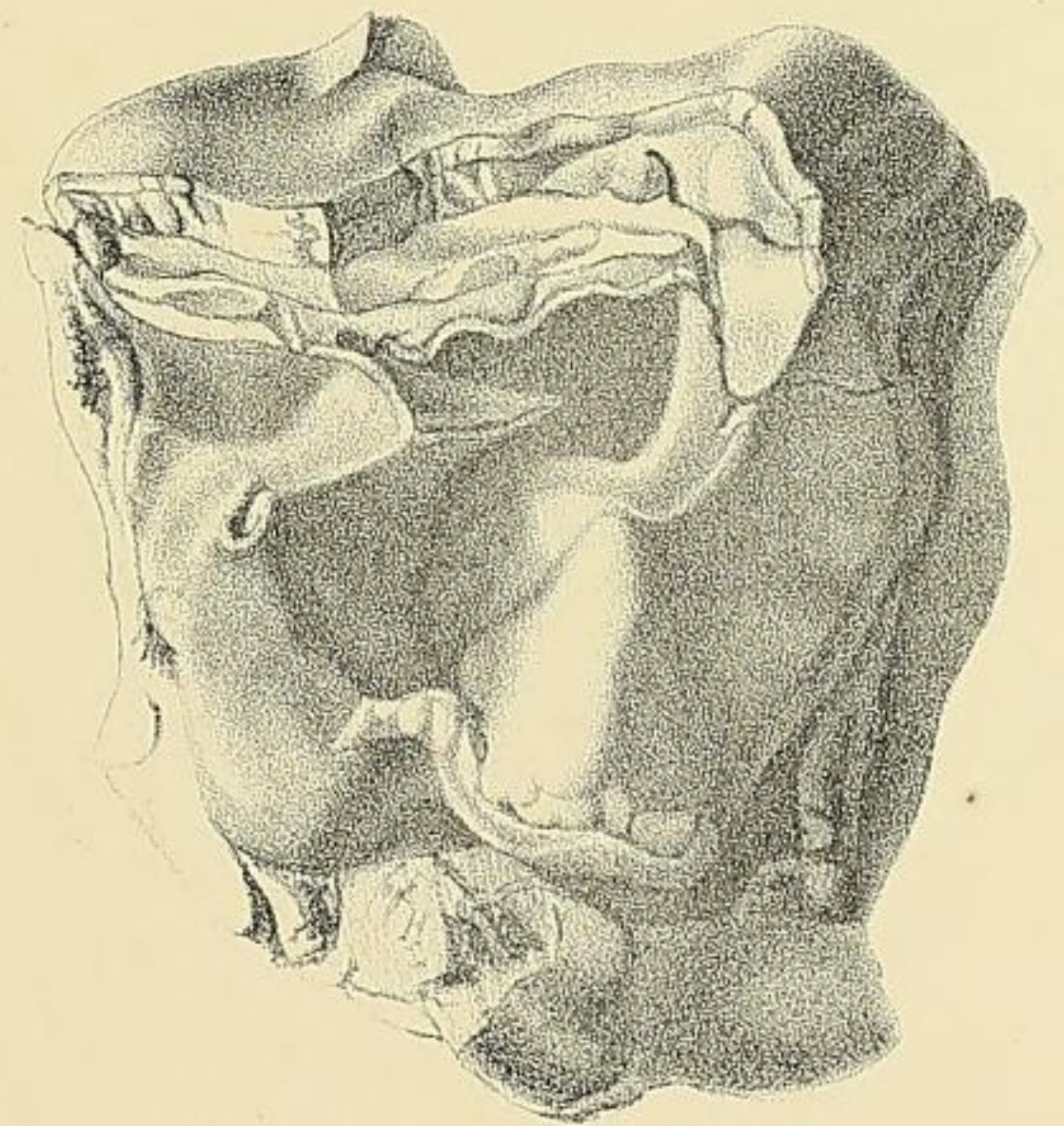
4.



5.



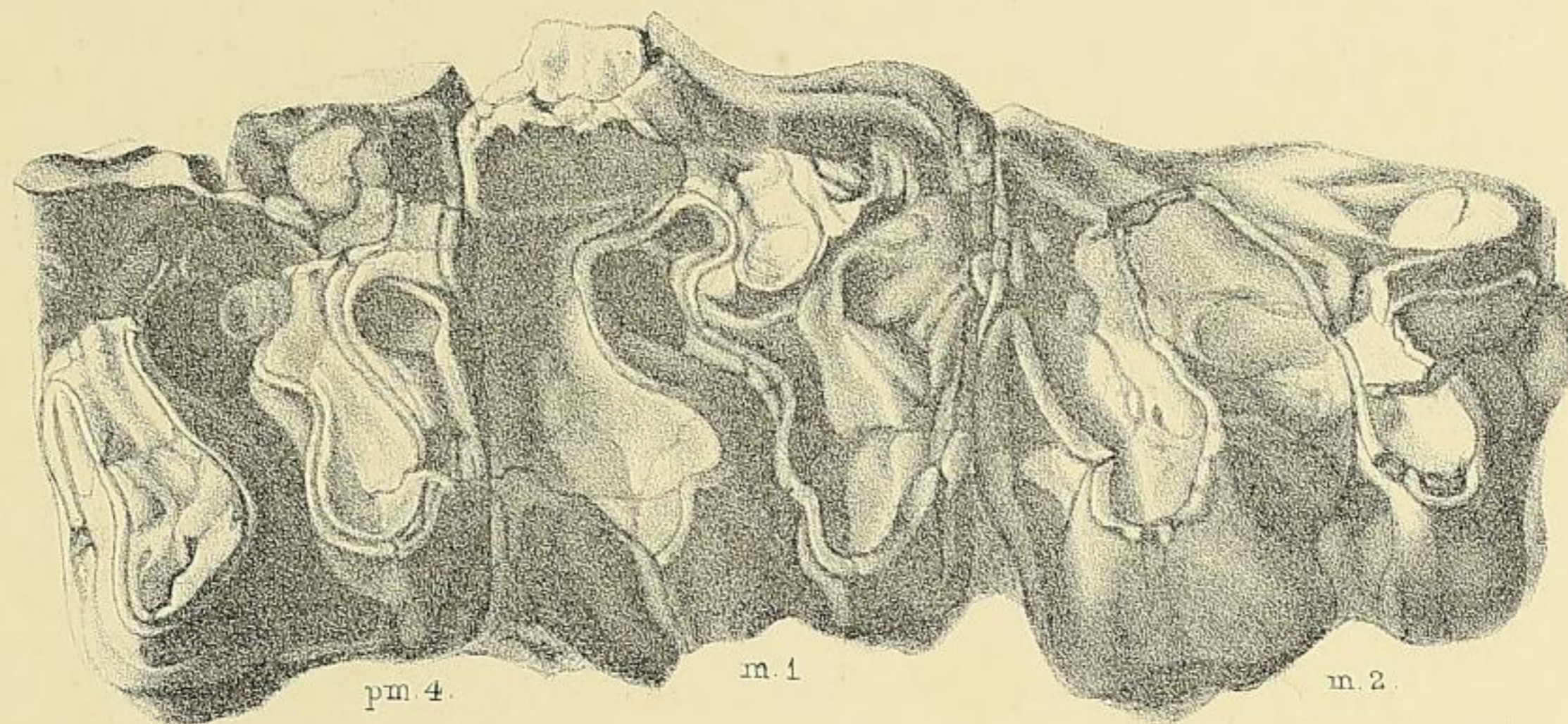
6.



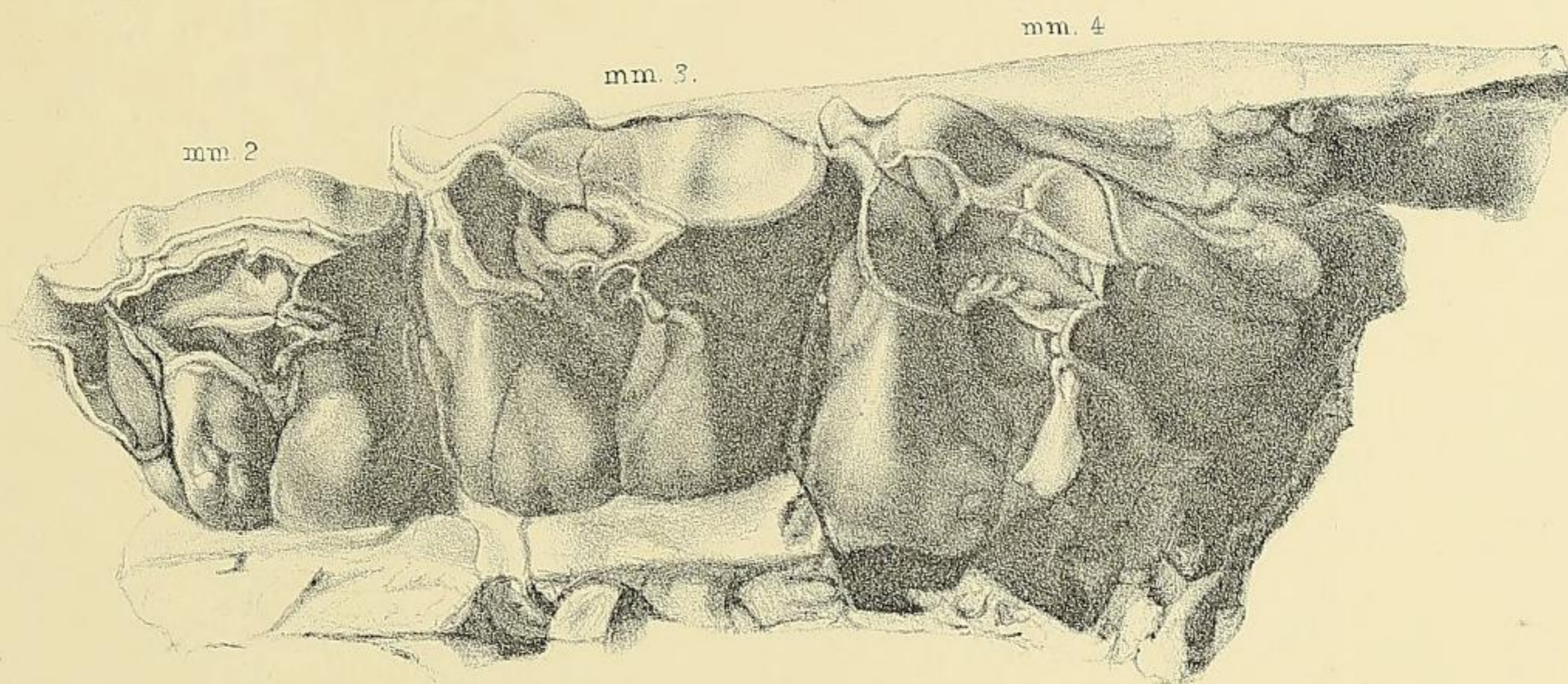
7.

PLATE VI.

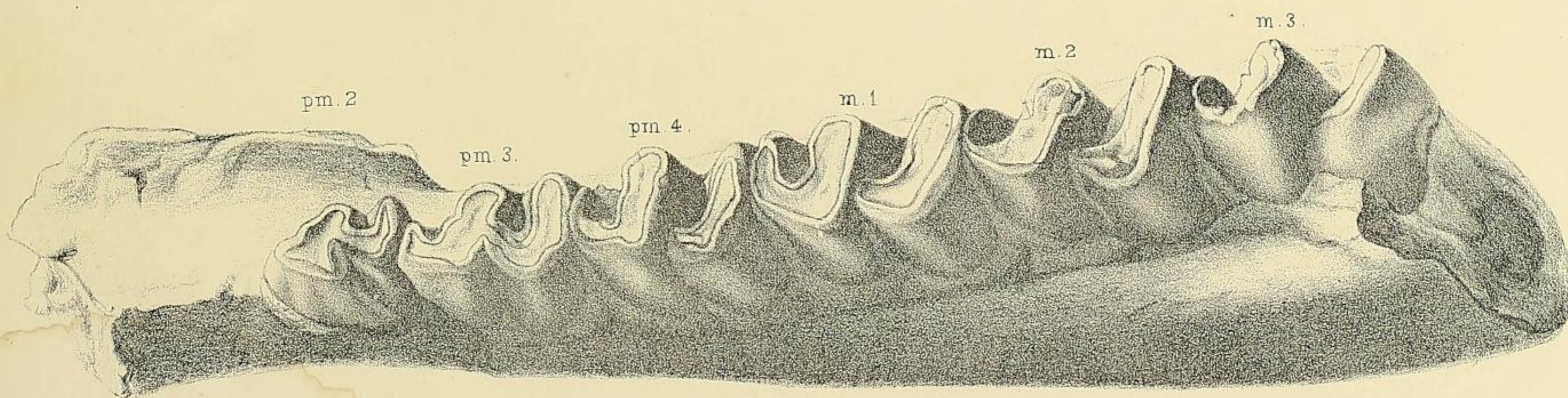
- Fig. 1. RHINOCEROS PALÆINDICUS (?) Falc. and Caut. : last premolar, and first and second true molars : from the Punjab : natural size. The specimens belong to a small form of the species. (No. C. 50, Ind. Mus.)
- „ 2. RHINOCEROS SIVALENSIS (?) Falc. and Caut. : second, third, and fourth milk-molars of the left side : from the Punjab : natural size. (No. C. 46, Ind. Mus.)
- „ 3. RHINOCEROS SIVALENSIS (?) Falc. and Caut. Symphysis and left ramus of mandible, containing second, third, and fourth premolars, and three true molars : from the Punjab : half natural size. (No. C. 56, Ind. Mus.)



1.



2.

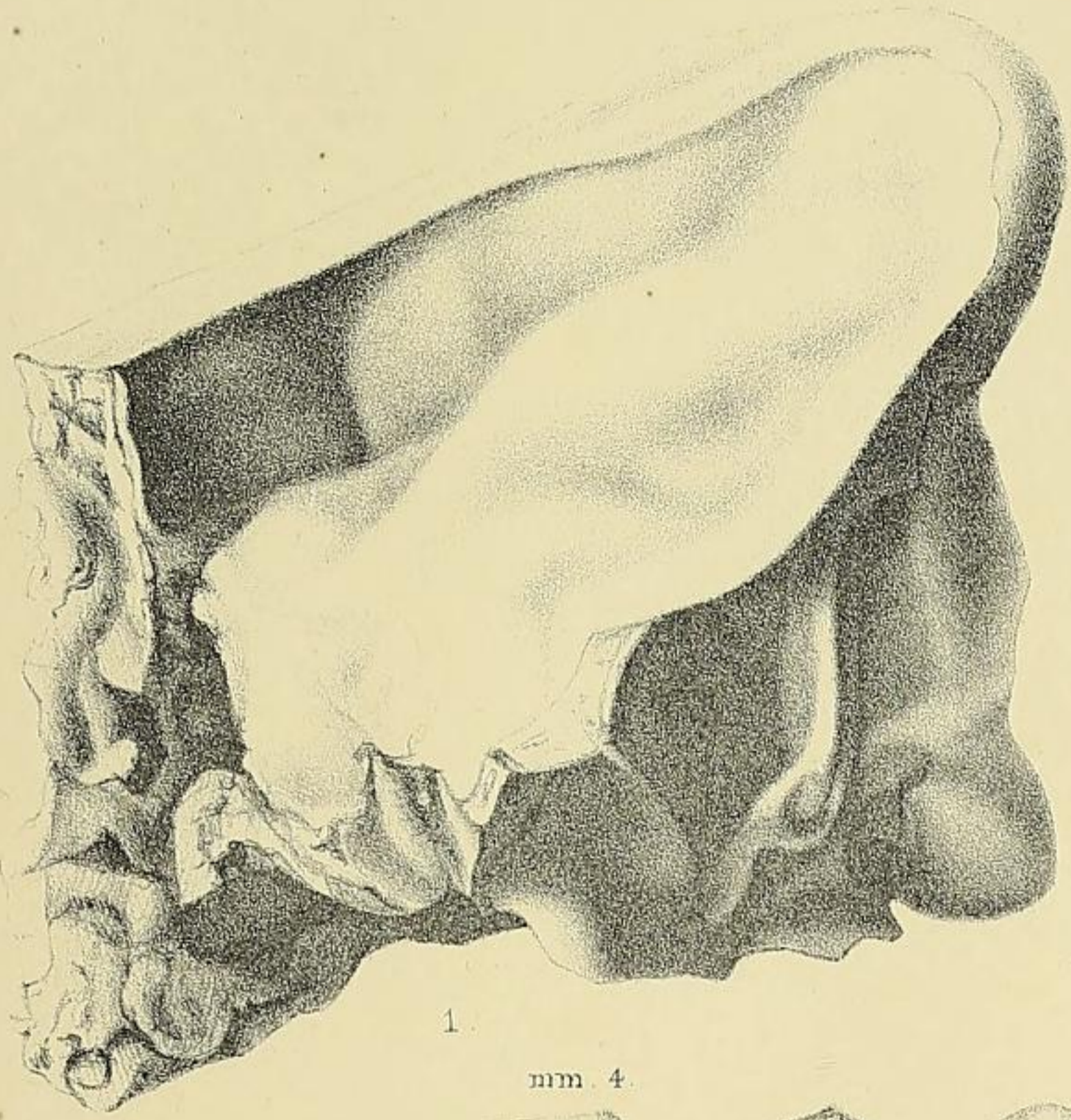


3.

PLATE VII.

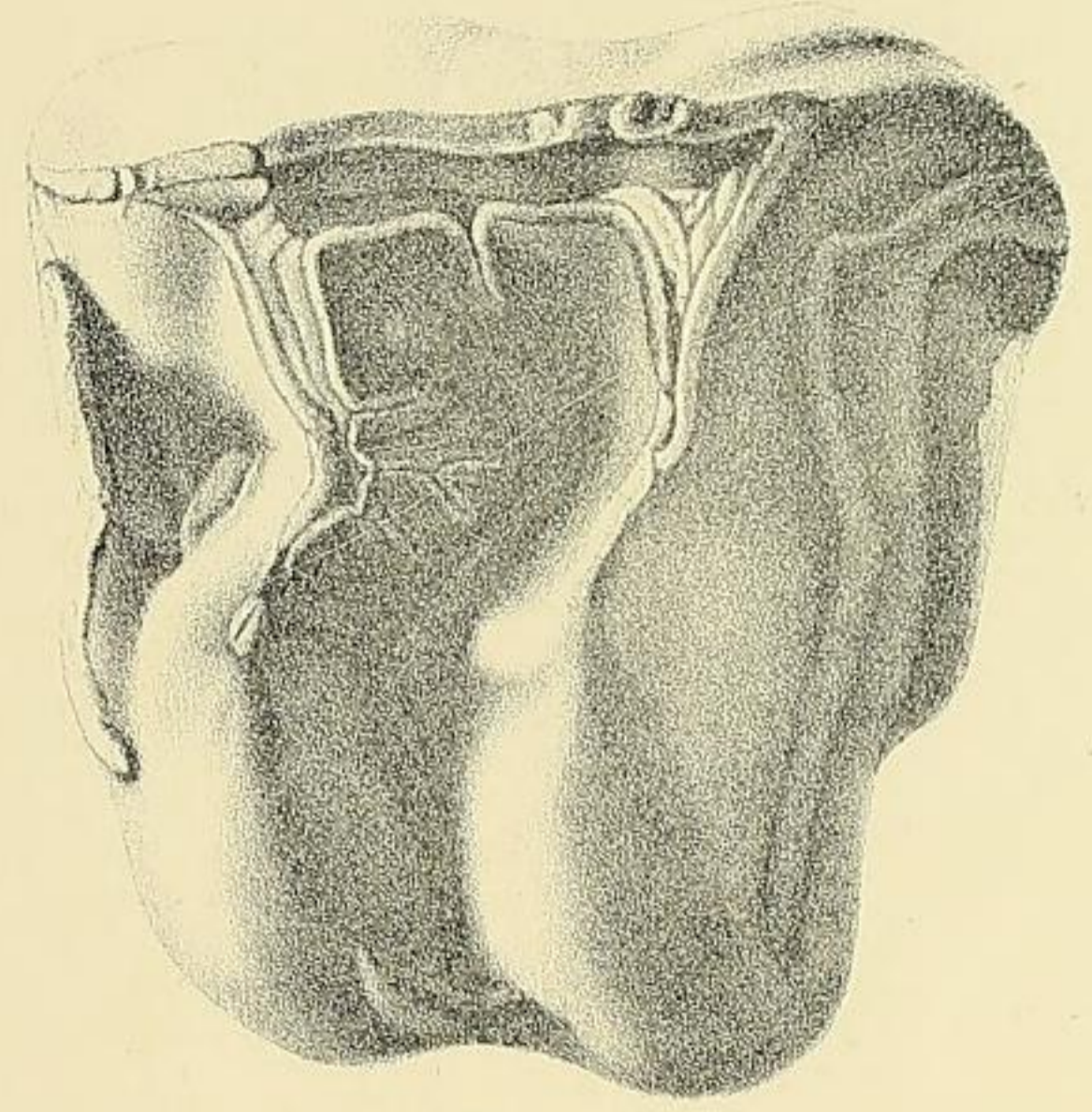
- Fig. 1. RHINOCEROS SIVALENSIS, Falc. and Caut., var. GAJENSIS Lyd. Hinder part of cranium :
from the Gáj group of Sind. (No. C. 36, Ind. Mus.)
- „ 2. RHINOCEROS PALÆINDICUS (?) Falc. and Caut. Last right upper premolar : from the
Punjab. (No. C. 26, Ind. Mus.)
- „ 3. RHINOCEROS PALÆINDICUS, Falc. and Caut. The four milk-molars of the right side ;
from the cast of a young skull in the British Museum, from the Siwaliks.
- „ 4. RHINOCEROS PLATYRHINUS, Falc. and Caut. Second and third left upper milk-molars ;
from the cast of a specimen in the British Museum, from the Siwaliks. (No. C 47,
Ind. Mus.)

Fig. 1 is drawn of about half the natural size, the rest are drawn of the natural size.



1.

mm. 4.

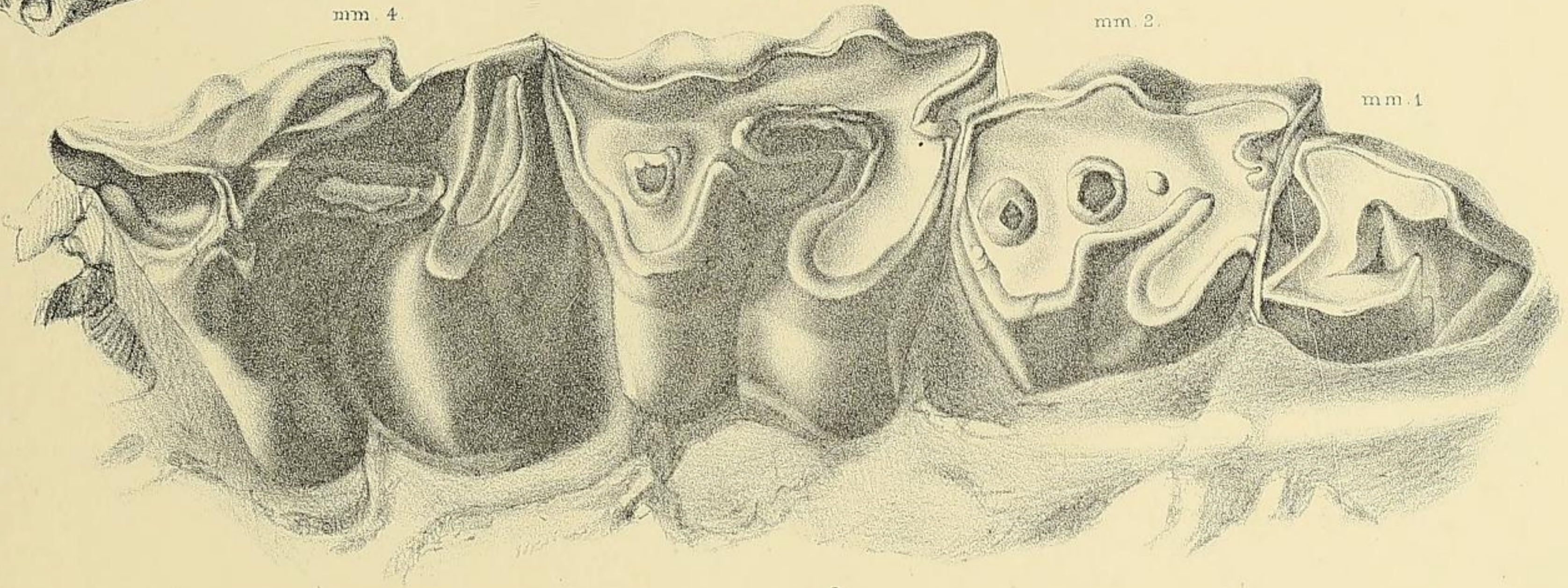


2.

mm. 3.

mm. 2.

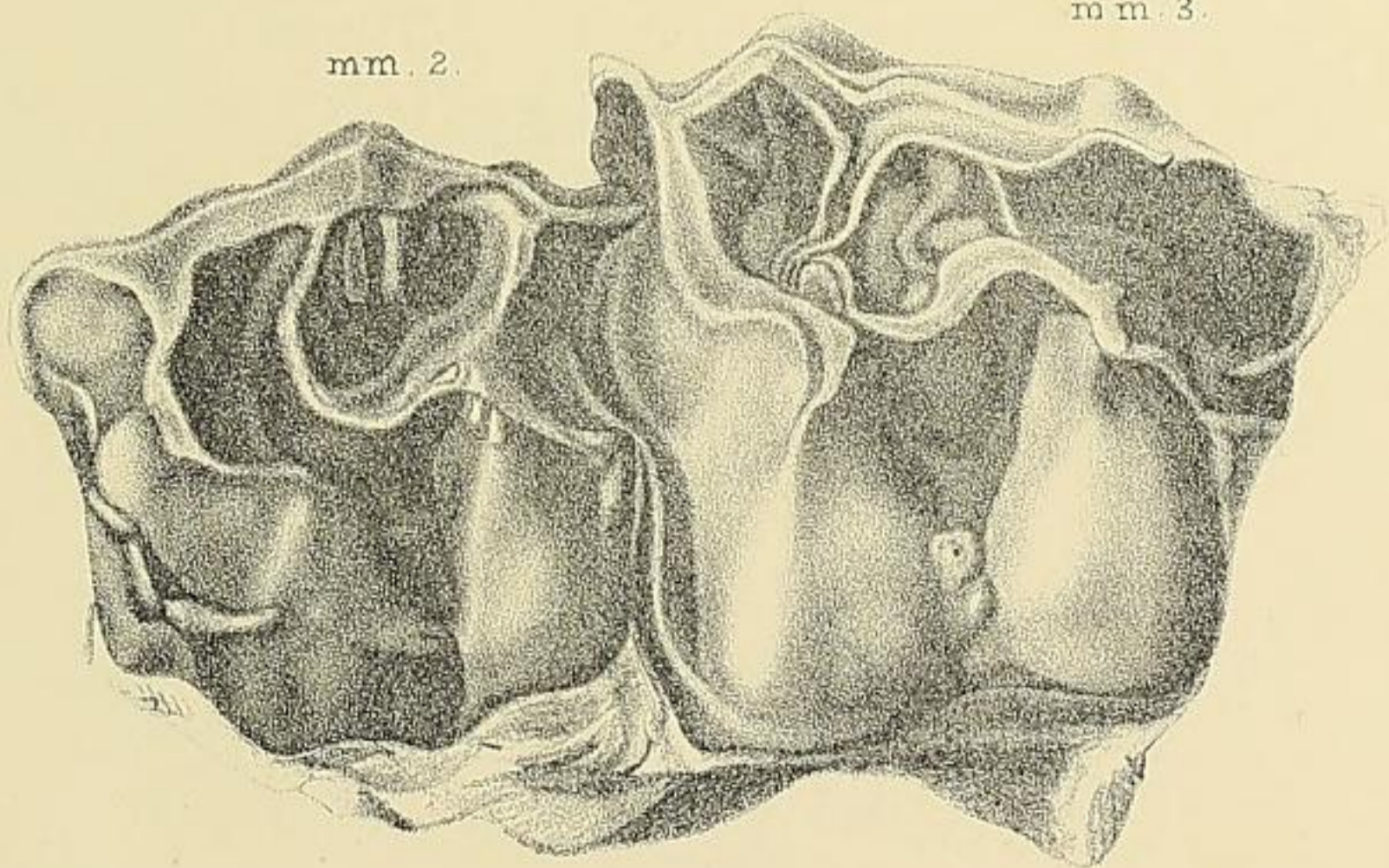
mm. 1.



3.

mm. 2.

mm. 3.



4.

PLATE VIII.

RHINOCEROS PLATYRHINUS, Falconer and Cautley.

The right upper molar dentition : from the cast of a cranium in the British Museum, collected by the late Colonel Baker in the Siwaliks : two-thirds the natural size.

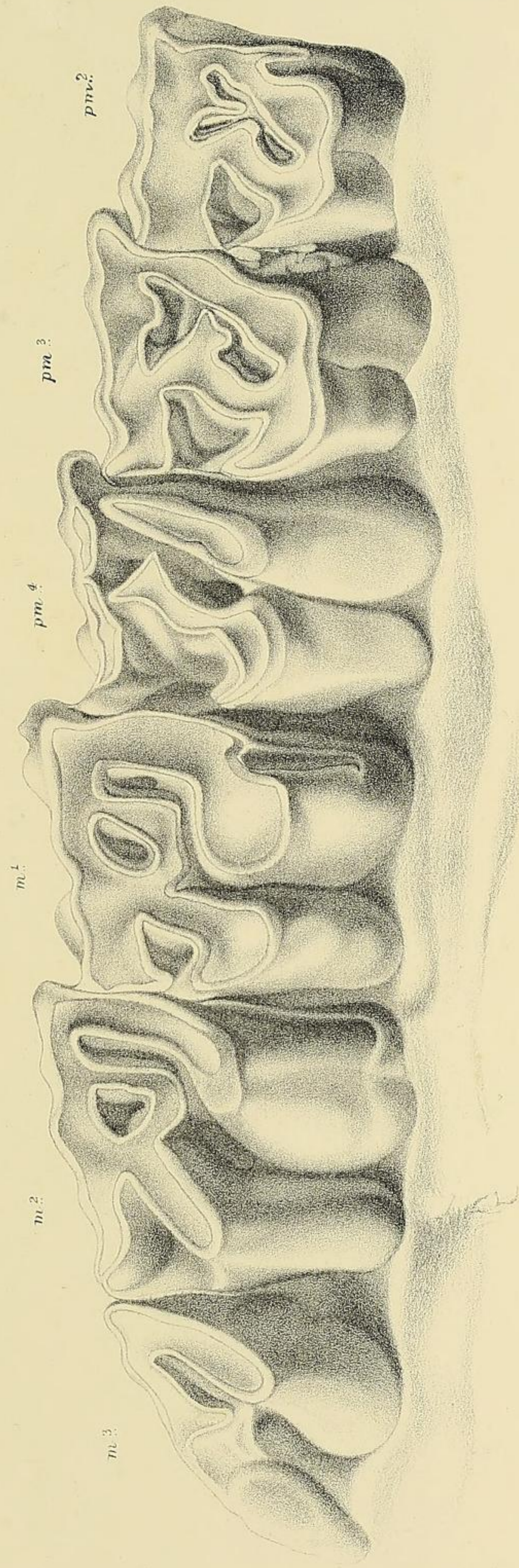


PLATE IX.

- Fig. 1. ACEROTHERIUM PERIMENSE, Falc. and Caut. Siwalik: restored view of cranium, from the specimen figured in plate I: the relations of the inferior squamosal processes, and the presence of two incisors are hypothetical. About one-sixth natural size.
- „ 2. RHINOCEROS PLATYRHINUS, Falc. and Caut. Siwalik: restored view of cranium, from a cast of the specimen collected by Colonel Baker in the Siwaliks, and now in the British Museum: the union of the inferior squamosal processes is not clearly exhibited. About one-sixth natural size.
- „ 3. RHINOCEROS SUMATRENSIS, Cuv. Recent: lateral view of cranium, copied from De Blainville's "Ostéographie." Rhinoceros, plate II: the non-union of the inferior squamosal processes is well shown. One-fifth natural size.

TERTIARY VERTEBRATA.

Geol. Surv. of India.

Vol. II. Pl. IX.

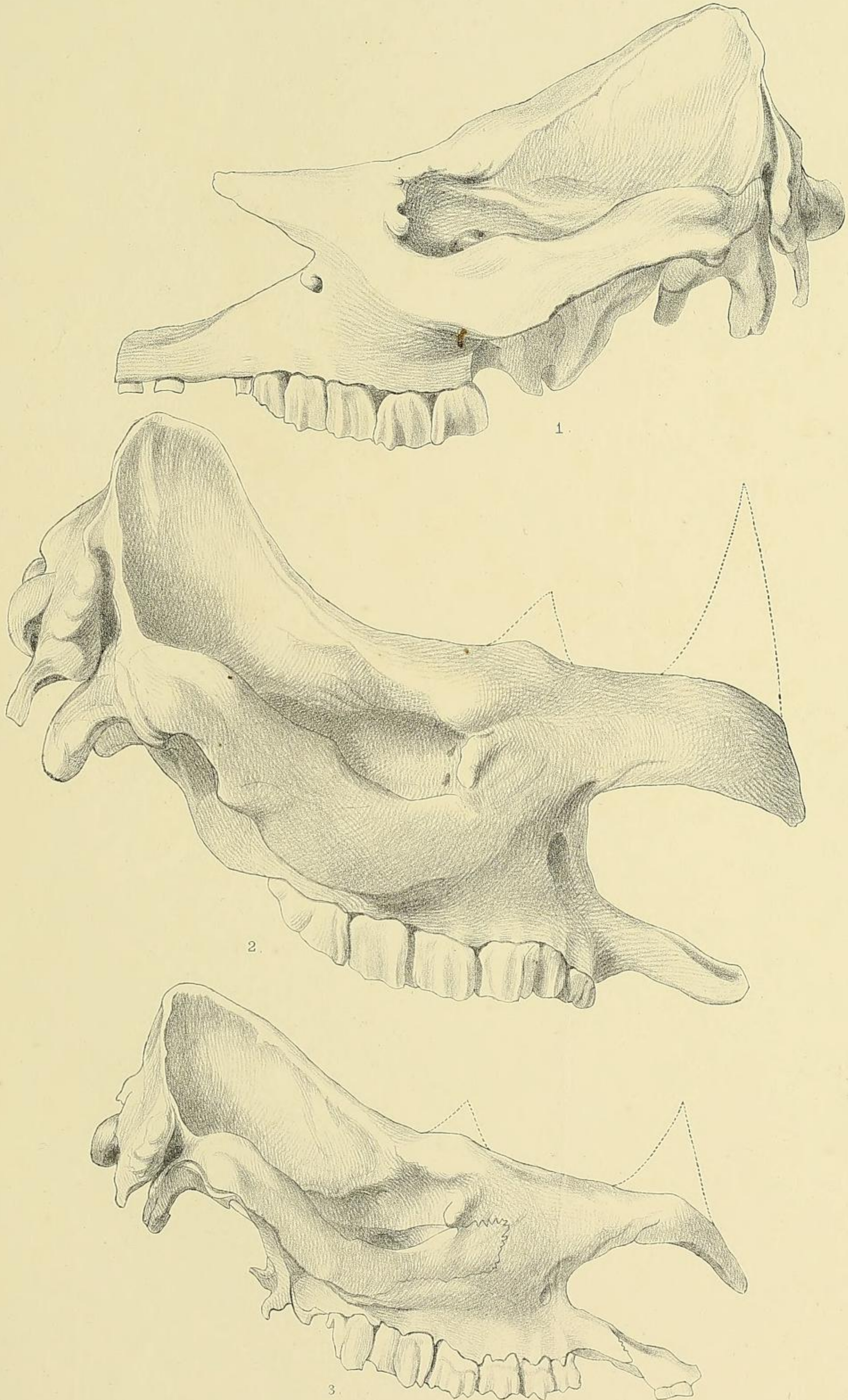
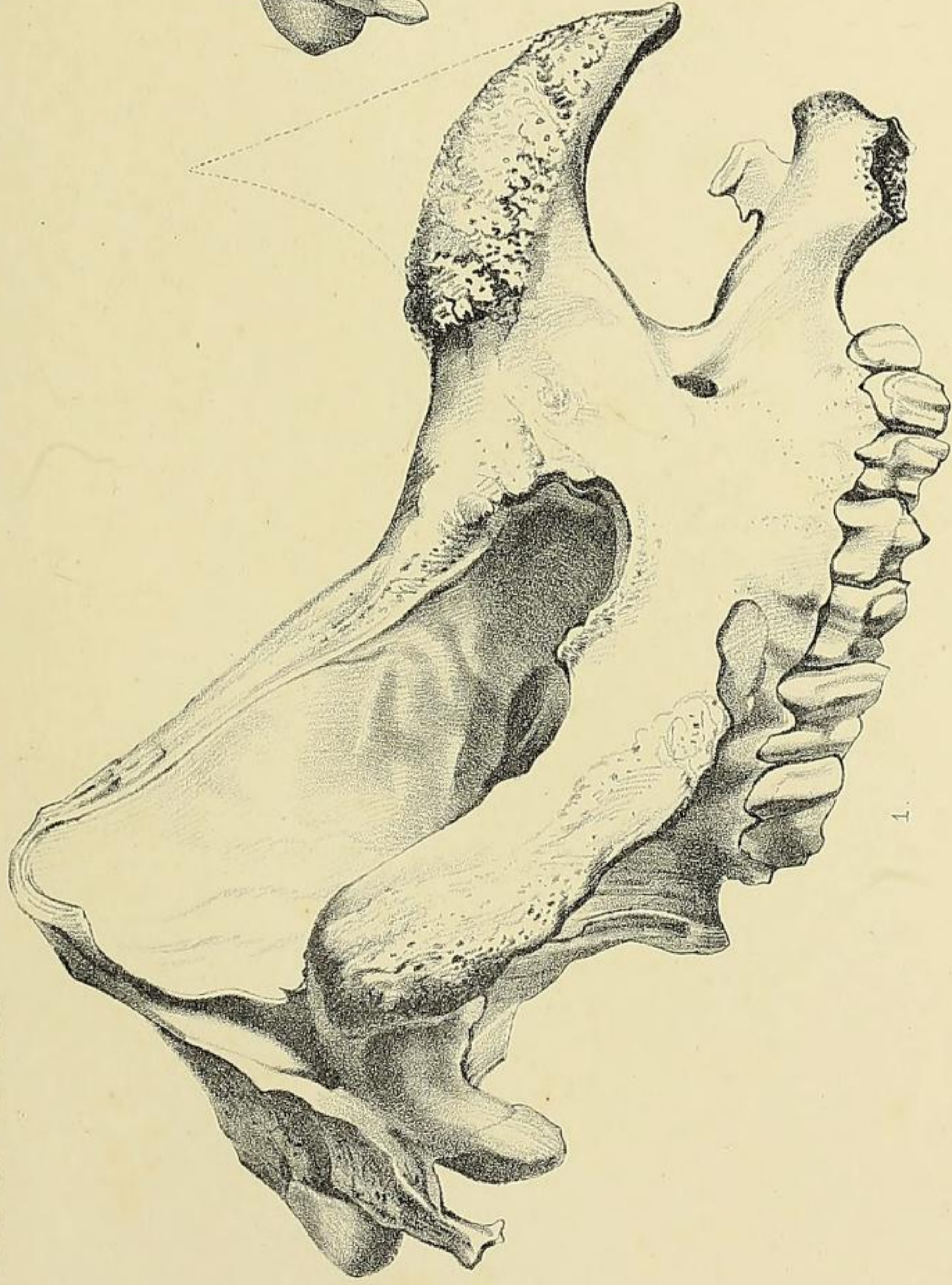
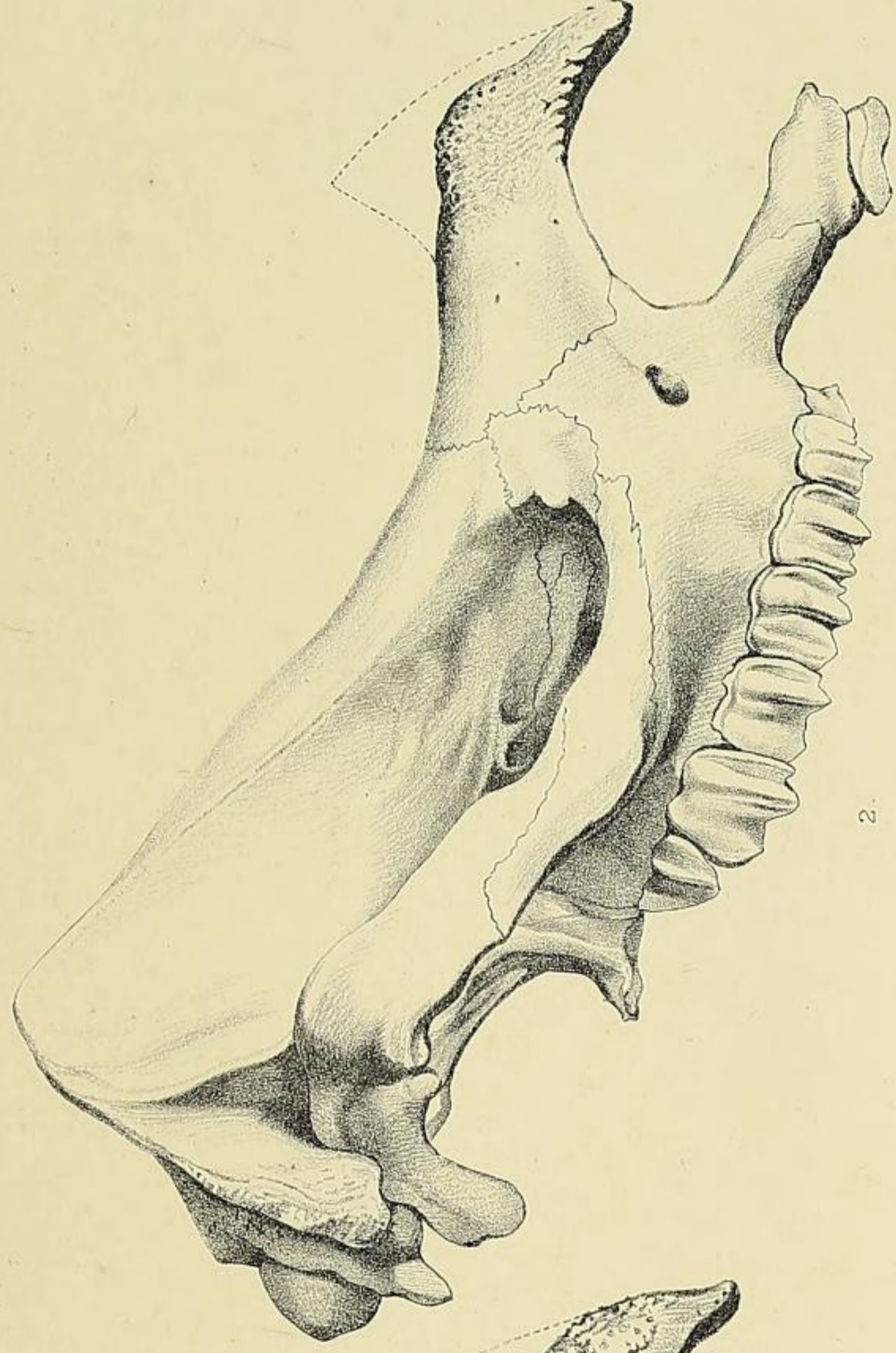


PLATE X.

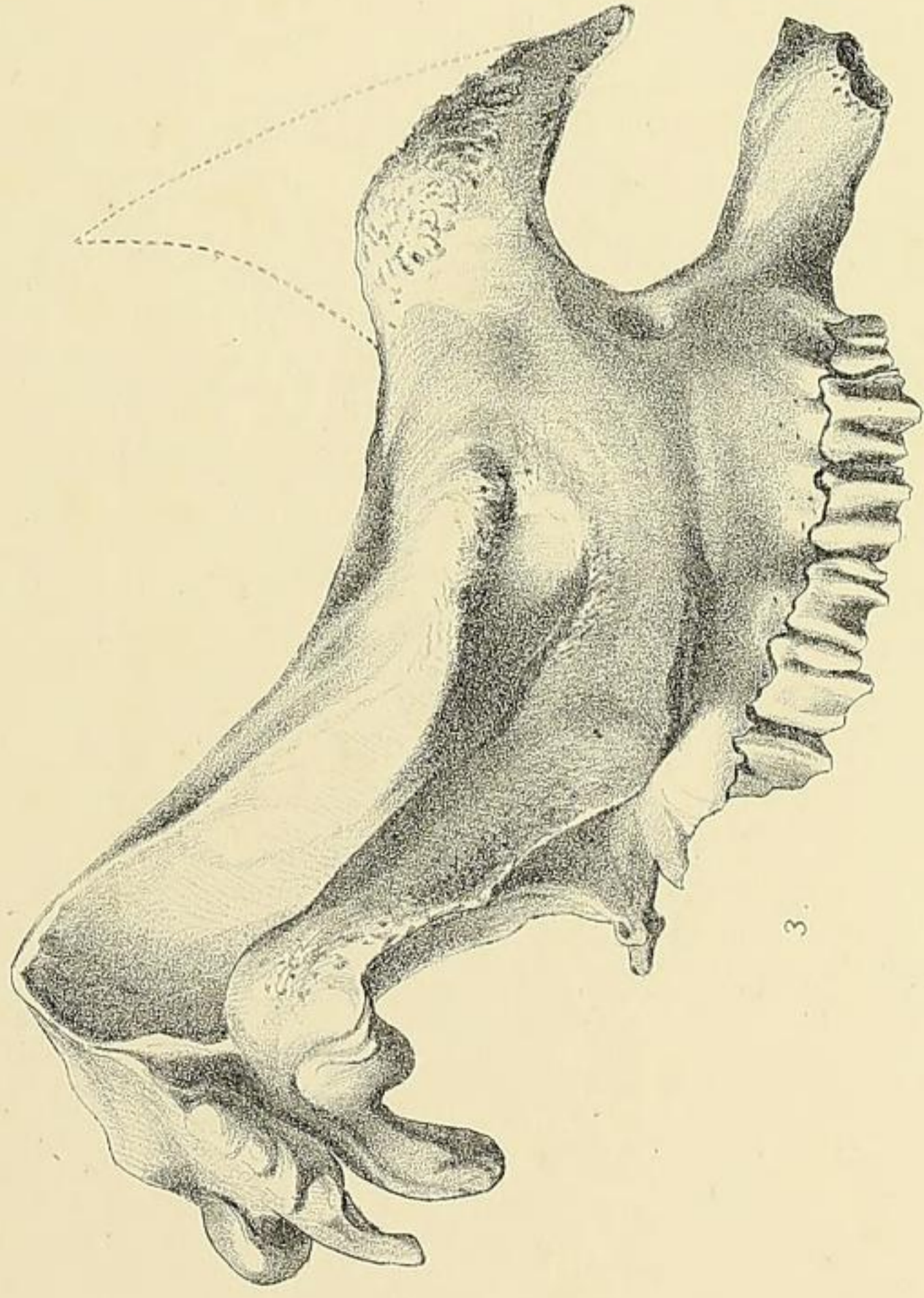
- Fig. 1. RHINOCEROS INDICUS, Cuv. Recent: lateral view of adult cranium copied from De Blainville's "Ostéographie." Rhinoceros, plate II: one-fifth natural size.
- „ 2. RHINOCEROS JAVANICUS, F. Cuv. Recent: lateral view of cranium copied from De Blainville, *loc. cit.*: one-fifth natural size.
- „ 3. RHINOCEROS PALÆINDICUS, Falc. and Caut. Siwalik: restored and reduced view of cranium taken from specimen drawn in plate LXXIII, fig. 1a, of the "Fauna Antiqua Sivalensis." About one-sixth natural size.
- „ 4. RHINOCEROS SIVALENSIS, Falc. and Caut. Siwalik: restored view of a specimen in the Indian Museum, collected by Mr. Theobald in the Siwaliks of the Punjab. About one-sixth natural size.



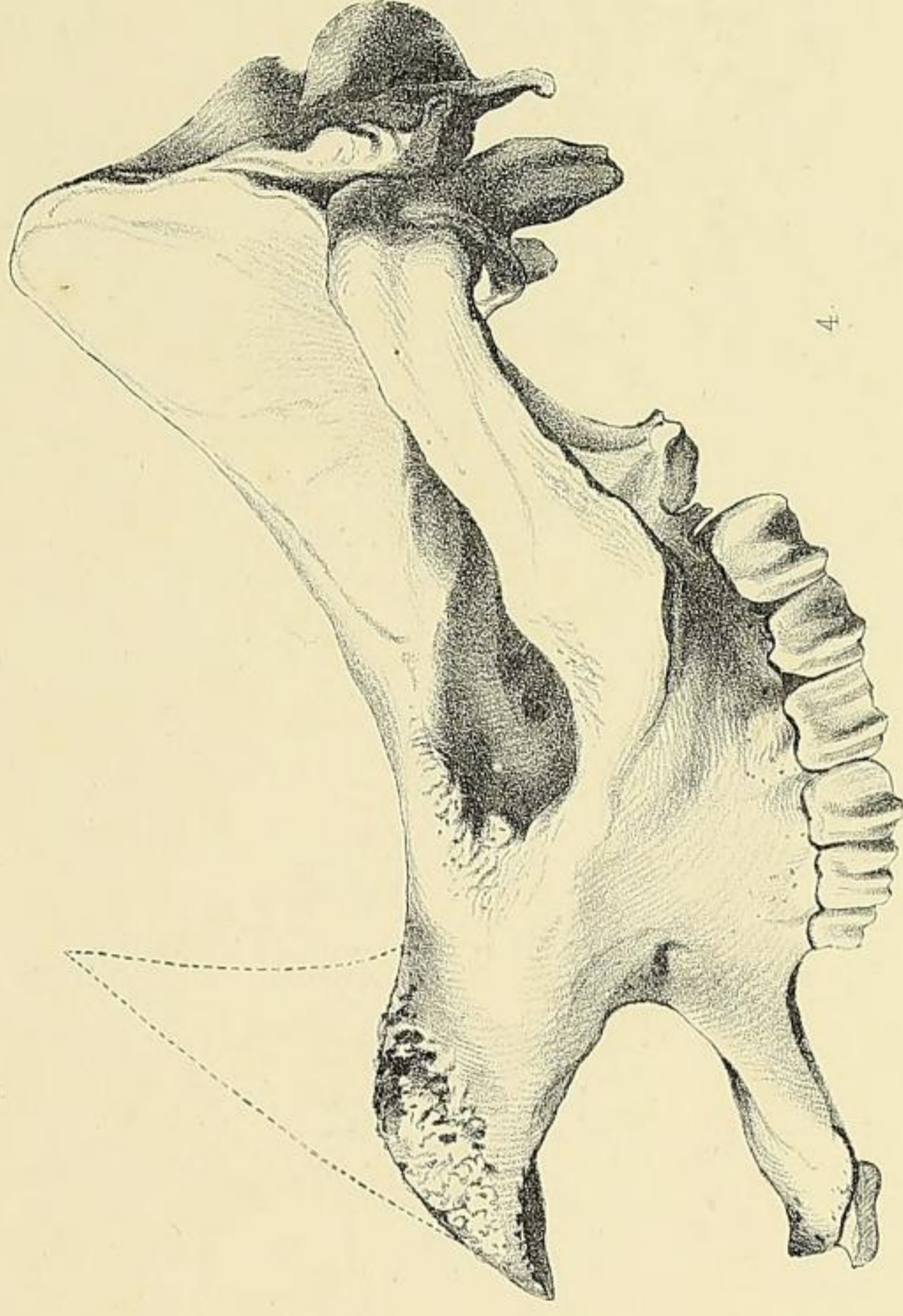
1.



2.



3.



4.