

Publication and dating of the journals forming the *Annals and Magazine of Natural History* and the *Journal of Natural History*

NEAL L. EVENHUIS

Department of Natural Sciences, Bishop Museum, 1525 Bernice Street, Honolulu, Hawai'i 96817–2704, USA;
email: neale@bishopmuseum.org

Table of contents

Abstract	1
Introduction	1
Background	2
Method of publication	3
Wrappers, title pages, and front matter	4
Editors/Conductors	5
Acknowledgments	5
References	6
Table 1	8
Table 2	9
Figures	66

Abstract

Pagination and dates of publication for almost 2,000 separate issues of the journals that formed the *Annals and Magazine of Natural History* and the *Journal of Natural History* are presented. These journals include: *Magazine of Natural History* (1828–1840), *Magazine of Zoology and Botany* (1836–1838), *Annals of Natural History* (1838–1840), the *Annals and Magazine of Natural History* (1841–1967), and the *Journal of Natural History* (1967–date).

Key words: Publication history, scientific journals, bibliography, dating

Introduction

Accurate dates of publication are essential in biology for ascertaining priority in publication with regard to descriptions of new taxa. Research on the dating and pagination of a full set of the *Annals of Magazine of Natural History*, its forerunners and successor, the

Journal of Natural History, deposited in the Bishop Museum, Honolulu (BPBM) as well as examination of other copies in the Smithsonian Institution, Washington, D.C. (USNM) and the Natural History Museum, London (BMNH) are presented here. A detailed history of the origin, formation, and growth of the journals forming the *Annals of Magazine of Natural History* are aptly presented by Sheets-Pyenson (1981) and need not be repeated here. Instead, I briefly summarize the history of the journals, describe them, and give tables of their pagination and dating.

Background

One of the most prestigious journals of its time was the British publication, commonly known as the *Annals and Magazine of Natural History* (here shorted to *Annals and Magazine* to save space). Its full name (with slight changes over the years) was *The Annals and Magazine of Natural History Zoology, Botany, and Geology being a continuation of the 'Annals' combined with Messrs. Loudon and Charlesworth's 'Magazine of Natural History'*. Within its covers were published some of the most thought-provoking articles in biology in the last 100 years including discussions and reviews of Charles Darwin's "Origin of Species" and Alfred Wallace's accounts of his travels in Malaysia and Indonesia and hypotheses of zoological geography. Subjects ranged from zoology to botany to geology including bibliographical studies of each discipline. It was attractive to both authors and readers because it offered relatively quick publication through its monthly publication scheme. Because of its longevity of publication, it is among relatively few English language journals in being witness and medium to the evolution and growth of biological thought since the 1830s.

In December 1835, Scottish physician and naturalist George Johnston suggested to his Edinburgh friend Sir William Jardine that they start a magazine that would be devoted to articles in zoology and botany. Although this was at a time with many competing natural history journals and magazines struggling to survive and catering to the same audience, Jardine agreed. After Johnston contacted another colleague and fellow Scotsman, Prideaux John Selby, to help with financial and editorial chores and persuaded Edinburgh bookseller William Home Lizars to agree to publication of the periodical, the first issue of the new *Magazine of Zoology and Botany* appeared in June 1836 (Fig. 1). Little did its founders know that this humble undertaking would lay the groundwork for one of the most prodigious biological periodicals ever published. The journal would change names and editorship within the first few years, and it would eventually buy out and absorb its competitor, the *Magazine of Natural History* when it changed its name to the *Annals and Magazine of Natural History* in 1841 (Fig. 2). The journal continues to be published today as the *Journal of Natural History*, making it one of the longest running continuously published biological journals. Some 1,960 issues of these journals have been published in an almost 140-year span.

Its early issues were purposefully provincial, devoted primarily to giving its readers the latest information on biological doings in Great Britain, with additional news of the latest information from the European continent. Contributors were paid small sums to write original articles and the editors took it upon themselves to write reviews, book notices, and societal doings, and to gather information from traveling scientists and summarize their work. These main categories continued throughout most of the life of the journal with the number of contributed articles by outside authors increasing significantly over the ensuing 100 years, but payment of those authors soon ceased to save money.

Desperate to have an editor for their botanical subjects, in 1838, the journal's founders acquired the services of famed botanist William J. Hooker and in doing so absorbed Hooker's *Botanical Companion* into the journal. The journal concurrently changed its name to the *Annals of Natural History*, moved publishing to London under the auspices of Richard Taylor (who coordinated much of the editing from his London base and corresponded with his northern editors), started up with volume one, and opted for a monthly publication schedule instead of the previous bi-monthly one.

In August 1840, Richard Taylor, bought out the rival *Magazine of Natural History* and printed its last issue for its editor Edward Charlesworth, who had fled London and left the journal in disarray and in the hands of entomologist Edward Newman to complete. One month later, Taylor had absorbed its subscribers into the newly named *Annals and Magazine of Natural History* and succeeded in squelching its last significant competitor.

However, despite the lack of competition from major competitors, print runs of the *Annals and Magazine* remained relatively conservative to ensure a small profit after publication of each issue. Subscribers hovered between 400 and 500 and the print run was calculated to match, most issues being 400 with some increasing as high as 700 soon after the acquisition of the *Magazine of Natural History*, but quickly reducing to 500 and then 400 after it became evident that subscribership did not increase as much as expected.

Method of publication

The *Magazine of Zoology and Botany* was published bi-monthly, keeping with the initial publication frequency of its main competitor in Britain, the *Magazine of Natural History*. After adding William J. Hooker to the editorship in 1838 and changing its name to the *Annals of Natural History*, it began to be published monthly. This frequency of publication continued with the *Annals and Magazine of Natural History* through the year 1964. In 1965, there was a one-year return to the bi-monthly issuance of parts combining two numbers in each issue. Then, in 1966, with publication of the *Annals and Magazine* coming to a close, it published only 4 quarterly issues combining three numbers in each issue.

Six parts comprised each of the two volumes of the *Magazine of Zoology and Botany*. This method of 6 parts per volume (= 2 volumes per year) continued throughout the history of this journal and the *Annals and Magazine* through 1941. From 1942 to 1965 twelve

parts per volume with one volume per year were published. Twenty volumes (in 10 years) made up a series. Each successive series started up with a new volume 1. Supplements, when published, appeared at the end of a volume (Fig. 6). These supplements appeared almost regularly from 1838 in the *Annals of Natural History* through 1847 in the *Annals and Magazine* with only volumes 1 and 5 of the *Annals of Natural History* not having them.

Little bibliographic analysis has been published on these journals. Brock & Meadows (1998) gave a 200-year history of the Taylor and Francis publishing house and make brief mention of the *Annals* and list its editors over the years. Mathews (1925) gave brief annotations of various journals used in his bibliography of Australian birds and indicated that issues of the *Annals and Magazine* and its forerunners came out on the first of each month. This monthly timing of method of publication seems to have been kept with incredible regularity over the more than 100 years the *Annals and Magazine* was in existence, as has been corroborated by examination of library receipts of copies in the BMNH as well as evidence in the Taylor & Francis archival records, which are held in the St. Bride's Printing Library in London. The main exceptions to keeping with this timing of publication were issues that were delayed during World War II (continuing until catching up in December 1949) and delays in publication that began in 1955 and continued until the last issue of the *Annals* was published in 1967.

The BMNH has three full sets of the all journals treated in this study located in separate libraries (Entomology, General, and Zoology). All three sets were examined for receipt dates. Dates of receipt being written or stamped on the wrappers of each issue began as early as 1880 but were inconsistently kept until the early 1900s. The earliest date of receipt for each issue is given in Table 2 as corroborative evidence of: 1) the publication schedule meeting as close as possible the first of every month; or 2) the printed publication date being a fairly accurate estimate of the actual mailing date. In some cases, the publication of parts of the *Annals and Magazine* were mailed and received earlier than the month printed, which has resulted in taxa actually being described in the year prior to the printed date on the issue (i.e., for those taxa described in "January" issues when they were actually mailed and received late in December of the prior year). This prior-year publication event has also happened with the *Journal of Natural History* (see Table 2 for these dates [listed in boldface]).

The dates of receipt can be taken for the most part as corroborating the publication date given in Table 2. However, due to the vagaries of human nature (sickness, holidays, etc.) dates sometimes are not stamped as soon as issues are received. The fact that dates of receipt in the three sets of the BMNH differ in some cases by a few days from each other bears witness to this phenomenon. Some delays indicated in the dates of receipt of the BMNH in Table 2 are most likely due to these factors of delays in stamping rather than delays by the publisher. These dates have been checked as far as practicable with information from the publisher in the Taylor & Francis archives located in the St. Bride's Printing

Library. Where receipt dates reflect actual publication delays, these dates are places in the “Date of publication” column and indicated as a publication delay by being placed in italics.

Wrappers, title pages, and front matter

Anyone who has read the *Annals and Magazine of Natural History* is familiar with the characteristic blue wrappers that accompanied each part. So characteristic were the blue wrappers of the journal, that it was nicknamed “Miss Blue” by one of its founders, George Johnston. These characteristic blue covers (Figs. 5–8) were kept until the journal changed its name to the *Journal of Natural History* in 1967, whereupon it took on a new design and color scheme (Fig. 9). Only one other major design change has taken place since 1967, when the cover of the *Journal of Natural History* became more yellow (Fig. 10). In 1991 the editors’ names were placed on each cover.

The characteristic graphic on the wrappers of the *Annals and Magazine* was taken from the second iteration of graphics that appeared on the title page of Loudon’s *Magazine of Natural History* (Fig. 3). After *Annals* publisher Richard Taylor bought out that periodical in August 1840, he usurped the graphic for his own purposes. It was used continually on each issue of the *Annals and Magazine* until 1952 when a slight size change took place and the graphic was omitted (Fig. 7). Loudon’s original design (Fig. 3) incorporated a medallion honoring Carolus Linnaeus (in profile) surrounded by animals and a few plants that were to be the subjects of the articles of the journal. The second design was changed in volume three of Loudon’s *Magazine* (1830) so that a blank space below Linnaeus’s head (now a frontal view) could be used to place the volume or issue number and date (Fig. 4) and much more vegetation surrounded the animals.

The wrappers and title pages of the journal not only listed changing editorship, but also gave the previous names for the journal and listed the journals that were absorbed into it. For example, in 1952 when the *Annals and Magazine* changed its size slightly and discontinued the Loudon graphic, in September the wrapper noted that the journal was now “incorporating the Journal of Botany”, which had ceased publication 10 years earlier. For almost the entire life of the *Annals and Magazine*, its wrappers let readers know that it was a “continuation of the ‘Annals’ combined with Messrs. Loudon and Charlesworth’s ‘Magazine of Natural History’”. This information was surely helpful in those early years, but it is remarkable that it continued to be listed on the wrapper over 120 years later!

According to Brock & Meadows (1998), a common practice of publishers in the 18th and 19th centuries was to place quotes in the preliminaries of their works. This tradition was kept throughout the publication history of the *Annals* and was initiated by a quote from Linnaeus on the top of the reverse of each title page:

“Omnes res creatae sunt divinae sapientiae et potentiae testes, divitiae felicitatis huma-

nae: ex harum usu bointas Creatoris; ex pulchritudine sapiente Domini; ex oeconomia in conservatione, proportione, renovatione, potentia majestatis elucet. earum itaque indagatio ab hominibus sibi relictis semper aestimata; a verè eruditus et sapientibus semper exulta; male doctis barbaris semper inimica fuit”

In 1846, an additional quote by P. Lotichii from the “Elegiarum” (Fig. 11) was added below the publisher’s ubiquitous emblem: a Roman lamp accompanied by the words “Alere Flammam”. In the next volume, the Lotichii quote was replaced by one from the publisher’s grandfather, John Taylor of Norwich, 1818. To this was added one by Bruckner from his 1767 Leiden publication, “*Théorie du Système Animal*”. From then on, the three quotes and the characteristic Taylor & Francis lamp emblem (Fig. 12) were kept until the last issue of the *Annals and Magazine* in 1967, eighty years later.

Editors/Conductors

The journals were essentially backed by the finances of the persons listed on the title page. They are listed under the words “conducted by”, which was an embellishment of their duties as editors of the various disciplines in their specialty. Essentially they were editors of the journals.

Table 1 gives a listing of the “editors” listed on the title pages and their dates of service for all the journals that formed the *Annals and Magazine* and the *Journal of Natural History*. The names of many prestigious biologists and geologists give evidence of the significance and import of these journals to the scientific community. In addition to the founders, luminaries such as John Edward Gray, Albert Günther, William Dallas, Arthur Shipley, Sir Arthur Smith Woodward, and Sir Guy Marshall helped edit the journal during its reign, most for more than 20 years. Although one of the primary founders, P.J. Selby, served in that capacity for 32 years (1836–1867), it was botanist William Carruthers who edited the journal longer than any other — for 45 years, from 1878 till his death in 1922. Publisher William Francis edited the journal for 39 years (1859–1897).

The dedication to the journal of many of the editors is evident when noting that they served the journal in that capacity until the year they died. At least sixteen of the 30 editors of the *Annals and Magazine* served until the year they died.

Acknowledgments

Libraries and staff of the Smithsonian Institution, Washington, D.C. and the Natural History Museum, London are kindly thanked for their assistance and allowing me access to their collections. The staff of the St. Bride’s Printing Library, London kindly allowed access to the Taylor & Francis archives and their well-indexed archives and generosity in

assistance made for a successful visit. Staff at the British Library helped with receipts for volumes 12 and 13 of the *Journal of Natural History* and Andrew Polaszek kindly arranged for obtaining the dates of publication for volumes 28 to date of the *Journal of Natural History* from its publisher. This project was funded in part from a grant from the Edmondson Fund and they are thanked for their financial assistance.

References

- Brock, W.H. & Meadows, A.J. (1998) *The Lamp of Learning. Two Centuries of Publishing at Taylor & Francis*. Taylor & Francis, London. xvii + 288 pp.
- Mathews, G.M. (1925) *The Birds of Australia. Bibliography of the Birds of Australia. Books Used in the Preparation of this Work with a Few Biographical Details of Authors and Collectors*. H.F. & G. Witherby, London. viii + 149 pp.
- Sheets-Pyenson, S. (1981) From the north to Red Lion Court: the creation and early years of the Annals of Natural History. *Archives of Natural History*, 10(2), 221–249.

TABLE 1. Editors of the *Annals and Magazine of Natural History* and its precursors.

<i>Magazine of Natural History</i>	
Editor	Year(s)
Loudon, John Claudius (1783–1843)	1828–1836
Charlesworth, Edward (1813–1893)	1837–1840
<i>Magazine of Zoology and Botany</i>	
Editor	Year(s)
Jardine, William (1800–1874)	1836–1838
Selby, Prideaux John (1788–1867)	1836–1838
Johnston, George (1797–1855)	1836–1838
<i>Annals of Natural History</i>	
Editor	Year(s)
Jardine, William (1800–1874)	1838–1840
Selby, Prideaux John (1788–1867)	1838–1840
Johnston, George (1797–1855)	1838–1840
Hooker, William Jackson (1785–1865)	1838–1840
Taylor, Richard (1781–1858)	1838–1840
<i>Annals and Magazine of Natural History</i>	
Editor	Year(s)
Jardine, William (1800–1874)	1840–1850
Selby, Prideaux John (1788–1867)	1840–1867
Johnston, George (1797–1855)	1840–1855
Don, David (1799–1841)	1840–1841
Taylor, Richard (1781–1858)	1840–1858
Babington, Charles Cardale (1808–1895)	1842–1877
Balfour, John Hutton (1808–1884)	1842–1857
Henfrey, Arthur (1819–1859)	1858–1859
Francis, William (1817–1904)	1859–1897
Gray, John Edward (1800–1875)	1860–1875
Dallas, William Sweetland (1824–1890)	1868–1890
Günther, Albert Carl Ludwig Gotthilf (1830–1914)	1876–1912
Carruthers, William (1830–1922)	1878–1922
Francis, William [junior] (1863–1932)	1898–1917
Francis, Richard Taunton (1884–1931)	1917–1931
Shipley, Arthur Everett (1861–1927)	1912–1927
Woodward, Sir Arthur Smith (1864–1944)	1923–1944
Champion, George Charles (1851–1927)	1923–1927
Stephenson, John (1871–1933)	1928–1933
Marshall, Sir Guy Anstruther Knox (1871–1959)	1928–1958
Regan, Charles Tate (1878–1943)	1931–1943
Calman, William Thomas (1871–1952)	1933–1952
Hawkins, Herbert Leader (1887–1969)	1944–1967

.....continued on the next page

TABLE 2 (continued)

Editor	Year(s)
Norman, John Roxbrough (1898–1944)	1944
Edwards, Wilfred Norman (1890–1956)	1945–1956
Taylor, Sir George (1904–1993)	1952–1967
Britton, Everard Baldwin (1912–)	1952–1962
Evans, Gwilym Owen	1963–1967
Oldroyd, Harold (1913–1978)	1963–1967
Corbet, Gordon Barclay (1933–)	1965–1967
Inglis, William Grant (–1996)	1965–1967
<i>Journal of Natural History</i>	
Editor	Year(s)
Evans, Gwilym Owen	1967–1973
Oldroyd, Harold (1913–1978)	1967–1978
Hawkins, Herbert Leader (1887–1969)	1967–1969
Rice, Anthony Leonard	1967–1969
Wallwork, John Anthony (1932–)	1969–1972
Southgate, Vaughan R (1944–)	1972–1983
Hollis, David (1938–)	1979–1988
Fincham, A.A	1983–1989
Moore, P Geoffrey	1988–1997
Huddleston, Thomas	1989–1995
Watling, Les (1945–)	1993
Polaszek, Andrew (1960–)	1995–date
Hayward, Peter Joseph	1997–date

TABLE 2. Dating of the journals forming the *Annals and Magazine of Natural History* and the *Journal of Natural History**Magazine of Natural History and Journal of Zoology, Botany, Mineralogy, Geology, and Meteorology*

Year	Series	Vol.	Part	Pages	Printed month	Date of publication	Other Date*
1828	1	1	1	1–96	May	1 May 1828	1 May 1828**
			2	97–200	July	1 July 1828	
			3	201–304	September	1 September 1828	
			4	305–408	November	1 November 1828	
			5	409–504	January 1829	1 January 1829	
1829	2	6	6	1–120	March	1 March 1829	
			7	121–216	May	1 May 1829	
			8	217–312	July	1 July 1829	
			9	313–408	September	1 September 1829	
			10	409–496	November	1 November 1829	
1830	3	11	11	1–96	January	1 January 1830	
			12	97–200	March	1 March 1830	
			13	201–296	May	1 May 1830	
			14	297–392	July	1 July 1830	
			15	393–488	September	1 September 1830	
			16	489–576	November	1 November 1830	
1831	4	17	17	1–96	January	1 January 1831	
			18	97–192	March	1 March 1831	
			19	193–288	May	1 May 1831	
			20	289–384	July	1 July 1831	
			21	385–480	September	1 September 1831	
			22	481–570	November	1 November 1831	
1832	5	23	23	1–112	January	1 January 1832	
			24	113–208	March	1 March 1832	
			25	209–304	April	1 April 1832	
			26	305–400	May	1 May 1832	
			27	401–496	June	1 June 1832	
			28	497–592	July	1 July 1832	
			29	593–688	September	1 September 1832	
			30	689–776	November	1 November 1832	
1833	6	31	31	1–96	January	1 January 1833	
			32	97–192	March	1 March 1833	
			33	193–288	May	1 May 1833	

.....continued on the next page

TABLE 2 (continued)

Year	Series	Vol.	Part	Pages	Printed month	Date of publication	Other Date*
1833		6	34	289–384	July	1 July 1833	
			35	385–480	September	1 September 1833	
			36	481–568	November	1 November 1833	
1834		7	37	1–96	January	1 January 1834	
			38	97–192	March	1 March 1834	
			39	193–288	May	1 May 1834	
			40	289–384	July	1 July 1834	
			41	385–480	September	1 September 1834	
			42	481–544	October	1 October 1834	
			43	545–608	November	1 November 1834	
			44	609–664	December	1 December 1834	
1835		8	45	1–64	January	1 January 1835	
			46	65–128	February	1 February 1835	
			47	129–192	March	1 March 1835	
			48	193–248	April	1 April 1835	
			49	249–304	May	1 May 1835	
			50	305–360	June	1 June 1835	
			51	361–416	July	1 July 1835	
			52	417–472	August	1 August 1835	
			53	473–528	September	1 September 1835	
			54	529–584	October	1 October 1835	
			55	585–640	November	1 November 1835	
			56	641–688	December	1 December 1835	
1836		9	57	1–56	January	1 January 1836	
			58	57–112	February	1 February 1836	
			59	113–168	March	1 March 1836	
			60	169–224	April	1 April 1836	
			61	225–280	May	1 May 1836	
			62	281–336	June	1 June 1836	
			63	337–382	July	1 July 1836	
			64	383–448	August	1 August 1836	
			65	449–504	September	1 September 1836	
			66	505–560	October	1 October 1836	
			67	561–616	November	1 November 1836	
			68	617–656	December	1 December 1836	
1837	n.s.	1	1	1–56	January	1 January 1837	

.....continued on the next page

TABLE 2 (continued)

Year	Series	Vol.	Part	Pages	Printed month	Date of publication	Other Date*
1837	n.s.	1	2	57–112	February	1 February 1837	
			3	113–168	March	1 March 1837	
			4	169–224	April	1 April 1837	
			5	225–280	May	1 May 1837	
			6	281–336	June	1 June 1837	
			7	337–392	July	1 July 1837	
			8	393–448	August	1 August 1837	
			9	449–504	September	1 September 1837	
			10	505–560	October	1 October 1837	
			11	561–608	November	1 November 1837	
			12	609–652	December	1 December 1837	
1838	n.s.	2	13	1–54	January	1 January 1838	
			14	55–110	February	1 February 1838	
			15	111–166	March	1 March 1838	
			16	167–238	April	1 April 1838	
			17	239–294	May	1 May 1838	
			18	295–350	June	1 June 1838	
			19	351–398	July	1 July 1838	
			20	399–452	August	1 August 1838	
			21	453–514	September	1 September 1838	
			22	515–570	October	1 October 1838	
			23	571–634	November	1 November 1838	
			24	635–683	December	1 December 1838	
1839	n.s.	3	25	1–48	January	1 January 1839	
			26	49–100	February	1 February 1839	
			27	101–148	March	1 March 1839	
			28	149–200	April	1 April 1839	
			29	201–256	May	1 May 1839	
			30	257–312	June	1 June 1839	
			31	313–366	July	1 July 1839	
			32	367–420	August	1 August 1839	
			33	421–472	September	1 September 1839	
			34	473–520	October	1 October 1839	
			35	521–568	November	1 November 1839	
			36	569–611	December	1 December 1839	
1840	n.s.	4	37	1–48	January	1 January 1840	
			38	49–104	February	1 February 1840	

.....continued on the next page

TABLE 2 (continued)

Year	Series	Vol.	Part	Pages	Printed month	Date of publication	Other Date*
1840	n.s.	4	39	105–152	March	1 March 1840	
			40	153–206	April	1 April 1840	
			41	207–250	May	1 May 1840	
			42	251–306	June	1 June 1840	
			43	307–368	July	1 July 1840	
			44	369–421	August	1 August 1840	
			Appendix to 39th part		1–72	August	1 August 1840

Magazine of Zoology and Botany

Year	Series	Vol.	Part	Pages	Printed month	Date of publication	Other Date
1836		1	1	1–112	June	1 June 1836	1 June 1836**
			2	113–212	August	1 August 1836	
			3	213–308	October	1 October 1836	
			4	309–419	December	1 December 1836	
			5	421–506	February 1837	1 February 1837	
			6	507–602	April 1837	1 April 1837	
1837		2	7	1–100	June	1 June 1837	
			8	101–196	August	1 August 1837	1 August 1837**
			9	197–292	August	1 August 1837	1 August 1837**
			10	293–386 + [2]	October	1 October 1837	1 October 1837**
			11	388–482	December	1 December 1837	1 December 1837**
			12	483–569 + [1]	February 1838	1 February 1838	

Annals of Natural History

Year	Series	Vol.	Part	Pages	Printed month	Date of publication	Other Date
1838	1	1	1	1–80	March	1 March 1838	
			2	81–160	April	1 April 1838	
			3	161–240	May	1 May 1838	
			4	241–336	June	1 June 1838	
			5	337–416	July	1 July 1838	
			6	417–488	August	1 August 1838	
1838	1	2	7	1–80	September	1 September 1838	
			8	81–160	October	1 October 1838	
			9	161–240	November	1 November 1838	
			10	241–312	December	1 December 1838	
			11	313–384	January 1839	1 January 1839	
			12	385–456	February 1839	1 February 1839	
			Suppl. 13	457–488	March 1839	1 March 1839	

.....continued on the next page

TABLE 2 (continued)

Year	Series	Vol.	Part	Pages	Printed month	Date of publication	Other Date*
1839	1	3	14	1–72	March	1 March 1839	
			15	73–144	April	1 April 1839	
			16	145–216	May	1 May 1839	
			17	217–288	June	1 June 1839	
			18	289–360	July	1 July 1839	
			19	361–432	August	1 August 1839	
			Suppl. 20	433–472	August	1 August 1839	
1839	1	4	21	1–72	September	1 September 1839	
			22	73–144	October	1 October 1839	
			23	145–216	November	1 November 1839	
			24	217–288	December	1 December 1839	
			25	289–360	January 1840	1 January 1840	
			26	361–432	February 1840	1 February 1840	
			Suppl. 27	433–472	March 1840	1 March 1840	
1840	1	5	28	1–72	March	1 March 1840	
			29	73–152	April	1 April 1840	
			30	153–224	May	1 May 1840	
			31	225–296	June	1 June 1840	
			32	297–368	July	1 July 1840	
			33	369–431	August	1 August 1840	

Annals and Magazine of Natural History

Year	Series	Vol.	Part	Pages	Printed month	Date of publication	Other Date
1840	1	6	34	1–80	September	1 September 1840	
			35	81–160	October	1 October 1840	
			36	161–240	November	1 November 1840	
			37	241–320	December	1 December 1840	
			38	321–400	January 1841	1 January 1841	
			39	401–480	February 1841	1 February 1841	
			Suppl. 40	481–536	March 1841	1 March 1841	
1841	1	7	41	1–80	March	1 March 1841	
			42	81–160	April	1 April 1841	
			43	161–240	May	1 May 1841	
			44	241–352	June	1 June 1841	
			45	353–448	July	1 July 1841	
			46	449–528	August	1 August 1841	
			Suppl. 47	529–584	September	1 September 1841	

.....continued on the next page

TABLE 2 (continued)

Year	Series	Vol.	Part	Pages	Printed month	Date of publication	Other Date*
1841	1	8	48	1–80	September	1 September 1841	
			49	81–160	October	1 October 1841	
			50	161–240	November	1 November 1841	
			51	241–320	December	1 December 1841	
			52	321–400	January 1842	1 January 1842	
			53	401–480	February 1842	1 February 1842	
			Suppl. 54	481–552	March 1842	1 March 1842	
1842	1	9	55	1–80	March	1 March 1842	
			56	81–168	April	1 April 1842	
			57	169–264	May	1 May 1842	
			58	265–360	June	1 June 1842	
			59	361–440	July	1 July 1842	
			60	441–520	August	1 August 1842	
			Suppl. 61	521–580	September	1 September 1842	
1842	1	10	62	1–80	September	1 September 1842	
			63	81–160	October	1 October 1842	
			64	161–240	November	1 November 1842	
			65	241–368	December	1 December 1842	
			Suppl. 66	369–424	January 1843	1 January 1843	
1843	1	11	67	1–80	January	1 January 1843	
			68	81–160	February	1 February 1843	
			69	161–240	March	1 March 1843	1 March 1843**
			70	241–328	April	1 April 1843	
			71	329–408	May	1 May 1843	1 May 1843**
			72	409–488	June	1 June 1843	
			Suppl. 73	489–544	June	1 June 1843	
1843	1	12	74	1–80	July	1 July 1843	
			75	81–152	August	1 August 1843	
			76	153–232	September	1 September 1843	
			77	233–304	October	1 October 1843	
			78	305–376	November	1 November 1843	
			79	377–456	December	1 December 1843	
			Suppl. 80	457–488	December	1 December 1843	
1844	1	13	81	1–80	January	1 January 1844	
			82	81–160	February	1 February 1844	

.....continued on the next page

TABLE 2 (continued)

Year	Series	Vol.	Part	Pages	Printed month	Date of publication	Other Date*
1844	1	13	83	161–240	March	1 March 1844	
			84	241–320	April	1 April 1844	
			85	321–408	May	1 May 1844	1 May 1844**
			86	409–488	June	1 June 1844	
			Suppl. 87	489–528	June	1 June 1844	
1844	1	14	88	1–80	July	1 July 1844	
			89	81–152	August	1 August 1844	
			90	153–232	September	1 September 1844	
			91	233–312	October	1 October 1844	
			92	313–384	November	1 November 1844	
			93	385–464	December	1 December 1844	
			Suppl. 94	465–520	January 1845	1 January 1845	
1845	1	15	95	1–72	January	1 January 1845	
			96	73–144	February	1 February 1845	1 February 1845**
			97	145–216	March	1 March 1845	
			98	217–296	April	1 April 1845	
			99	297–376	May	1 May 1845	
			100	377–448	June	1 June 1845	
			Suppl. 101	449–504	July	1 July 1845	
1845	1	16	102	1–72	July	1 July 1845	
			103	73–144	August	1 August 1845	
			104	145–216	September	1 September 1845	
			105	217–288	October	1 October 1845	
			106	289–360	November	1 November 1845	
			107	361–432	December	1 December 1845	
			Suppl. 108	433–472	January 1846	1 January 1846	
1846	1	17	109	1–72	January	1 January 1846	
			110	73–144	February	1 February 1846	
			111	145–216	March	1 March 1846	
			112	217–296	April	1 April 1846	
			113	297–376	May	1 May 1846	
			114	377–456	June	1 June 1846	
			Suppl. 115	457–504	June	1 June 1846	
1846	1	18	116	1–72	July	1 July 1846	
			117	73–144	August	1 August 1846	

.....continued on the next page

TABLE 2 (continued)

Year	Series	Vol.	Part	Pages	Printed month	Date of publication	Other Date*
1846	1	18	118	145–216	September	1 September 1846	
			119	217–288	October	1 October 1846	
			120	289–360	November	1 November 1846	
			121	361–432	December	1 December 1846	
			Suppl. 122	433–480	January 1847	1 January 1847	
1847	1	19	123	1–72	January	1 January 1847	
			124	73–144	February	1 February 1847	
			125	145–216	March	1 March 1847	
			126	217–288	April	1 April 1847	
			127	289–360	May	1 May 1847	
			128	361–432	June	1 June 1847	
			Suppl. 129	433–480	June	1 June 1847	
1847	1	20	130	1–72	July	1 July 1847	
			131	73–144	August	1 August 1847	
			132	145–216	September	1 September 1847	
			133	217–288	October	1 October 1847	
			134	289–360	November	1 November 1847	
			135	361–432	December	1 December 1847	
			Suppl. 136	433–437	December	1 December 1847	
1848	2	1	1	1–80	January	1 January 1848	
			2	81–160	February	1 February 1848	
			3	161–248	March	1 March 1848	
			4	249–320	April	1 April 1848	
			5	321–400	May	1 May 1848	
			6	401–474	June	1 June 1848	
1848	2	2	7	1–80	July	1 July 1848	
			8	81–152	August	1 August 1848	
			9	153–224	September	1 September 1848	
			10	225–296	October	1 October 1848	
			11	297–368	November	1 November 1848	
			12	369–472	December	1 December 1848	
1849	2	3	13	1–80	January	1 January 1849	
			14	81–160	February	1 February 1849	
			15	161–240	March	1 March 1849	
			16	241–320	April	1 April 1849	

.....continued on the next page

TABLE 2 (continued)

Year	Series	Vol.	Part	Pages	Printed month	Date of publication	Other Date*
1849	2	3	17	321–432	May	1 May 1849	
			18	433–528	June	1 June 1849	
1849	2	4	19	1–80	July	1 July 1849	
			20	81–160	August	1 August 1849	
			21	161–232	September	1 September 1849	
			22	233–304	October	1 October 1849	
			23	305–384	November	1 November 1849	
			24	385–460	December	1 December 1849	
1850	2	5	25	1–80	January	1 January 1850	
			26	81–160	February	1 February 1850	
			27	161–240	March	1 March 1850	
			28	241–320	April	1 April 1850	
			29	321–432	May	1 May 1850	
			30	433–524	June	1 June 1850	
1850	2	6	31	1–72	July	1 July 1850	
			32	73–152	August	1 August 1850	
			33	153–232	September	1 September 1850	
			34	233–312	October	1 October 1850	
			35	313–400	November	1 November 1850	
			36	401–504	December	1 December 1850	
1851	2	7	37	1–80	January	1 January 1851	
			38	81–160	February	1 February 1851	
			39	161–240	March	1 March 1851	
			40	241–352	April	1 April 1851	
			41	353–432	May	1 May 1851	
			42	433–507	June	1 June 1851	
1851	2	8	43	1–80	July	1 July 1851	
			44	81–160	August	1 August 1851	
			45	161–240	September	1 September 1851	
			46	241–352	October	1 October 1851	
			47	353–432	November	1 November 1851	
			48	433–512	December	1 December 1851	
1852	2	9	49	1–80	January	1 January 1852	
			50	81–160	February	1 February 1852	

.....continued on the next page

TABLE 2 (continued)

Year	Series	Vol.	Part	Pages	Printed month	Date of publication	Other Date*
1852	2	9	51	161–248	March	1 March 1852	
			52	249–360	April	1 April 1852	
			53	361–440	May	1 May 1852	
			54	441–520	June	1 June 1852	
1852	2	10	55	1–80	July	1 July 1852	
			56	81–160	August	1 August 1852	
			57	161–240	September	1 September 1852	
			58	241–320	October	1 October 1852	
			59	321–400	November	1 November 1852	
			60	401–472	December	1 December 1852	
1853	2	11	61	1–80	January	1 January 1853	
			62	81–160	February	1 February 1853	
			63	161–264	March	1 March 1853	
			64	265–344	April	1 April 1853	
			65	345–424	May	1 May 1853	
			66	425–496	June	1 June 1853	
1853	2	12	67	1–72	July	1 July 1853	
			68	73–152	August	1 August 1853	
			69	153–224	September	1 September 1853	
			70	225–296	October	1 October 1853	
			71	297–368	November	1 November 1853	
			72	369–488	December	1 December 1853	
1854	2	13	73	1–80	January	1 January 1854	
			74	81–160	February	1 February 1854	
			75	161–240	March	1 March 1854	
			76	241–352	April	1 April 1854	
			77	353–432	May	1 May 1854	
			78	433–512	June	1 June 1854	
1854	2	14	79	1–80	July	1 July 1854	
			80	81–160	August	1 August 1854	
			81	161–240	September	1 September 1854	
			82	241–320	October	1 October 1854	
			83	321–400	November	1 November 1854	
			84	401–472	December	1 December 1854	

.....continued on the next page

TABLE 2 (continued)

Year	Series	Vol.	Part	Pages	Printed month	Date of publication	Other Date*
1855	2	15	85	1–80	January	1 January 1855	
			86	81–160	February	1 February 1855	
			87	161–240	March	1 March 1855	
			88	241–320	April	1 April 1855	
			89	321–392	May	1 May 1855	
			90	393–472	June	1 June 1855	
1855	2	16	91	1–80	July	1 July 1855	
			92	81–152	August	1 August 1855	
			93	153–232	September	1 September 1855	
			94	233–304	October	1 October 1855	
			95	305–384	November	1 November 1855	
			96	385–472	December	1 December 1855	
1856	2	17	97	1–80	January	1 January 1856	
			98	81–208	February	1 February 1856	
			99	209–288	March	1 March 1856	
			100	289–368	April	1 April 1856	
			101	369–448	May	1 May 1856	
			102	449–528	June	1 June 1856	
1856	2	18	103	1–80	July	1 July 1856	
			104	81–192	August	1 August 1856	
			105	193–272	September	1 September 1856	
			106	273–352	October	1 October 1856	
			107	353–432	November	1 November 1856	
			108	433–504	December	1 December 1856	
1857	2	19	109	1–112	January	1 January 1857	
			110	113–192	February	1 February 1857	
			111	193–272	March	1 March 1857	
			112	273–352	April	1 April 1857	
			113	353–432	May	1 May 1857	
			114	433–504	June	1 June 1857	
1857	2	20	115	1–80	July	1 July 1857	
			116	81–160	August	1 August 1857	
			117	161–240	September	1 September 1857	
			118	241–32	October	1 October 1857	
			119	321–400	November	1 November 1857	

.....continued on the next page

TABLE 2 (continued)

Year	Series	Vol.	Part	Pages	Printed month	Date of publication	Other Date*
1857	2	20	120	401–472	December	1 December 1857	
			Suppl. 121	473–531	January 1858	1 January 1858	
1858	3	1	1	1–80	January	1 January 1858	
			2	81–160	February	1 February 1858	
			3	161–240	March	1 March 1858	
			4	241–320	April	1 April 1858	
			5	321–400	May	1 May 1858	
			6	401–472	June	1 June 1858	
1858	3	2	7	1–84	July	1 July 1858	
			8	85–164	August	1 August 1858	
			9	165–236	September	1 September 1858	
			10	237–316	October	1 October 1858	
			11	317–388	November	1 November 1858	
			12	389–500	December	1 December 1858	
1859	3	3	13	1–80	January	1 January 1859	
			14	81–160	February	1 February 1859	
			15	161–240	March	1 March 1859	
			16	241–320	April	1 April 1859	
			17	321–448	May	1 May 1859	
			18	449–520	June	1 June 1859	
1859	3	4	19	1–80	July	1 July 1859	
			20	81–160	August	1 August 1859	
			21	161–240	September	1 September 1859	
			22	241–320	October	1 October 1859	
			23	321–400	November	1 November 1859	
			24	401–472	December	1 December 1859	
1860	3	5	25	1–72	January	1 January 1860	
			26	73–152	February	1 February 1860	
			27	153–232	March	1 March 1860	
			28	233–352	April	1 April 1860	
			29	353–432	May	1 May 1860	
			30	433–512	June	1 June 1860	
1860	3	6	31	1–80	July	1 July 1860	
			32	81–152	August	1 August 1860	

.....continued on the next page

TABLE 2 (continued)

Year	Series	Vol.	Part	Pages	Printed month	Date of publication	Other Date*
1860	3	6	33	153–232	September	1 September 1860	
			34	233–312	October	1 October 1860	
			35	313–392	November	1 November 1860	
			36	393–464	December	1 December 1860	
1861	3	7	37	1–72	January	1 January 1861	
			38	73–152	February	1 February 1861	
			39	153–232	March	1 March 1861	
			40	233–344	April	1 April 1861	
			41	345–424	May	1 May 1861	
			42	425–496	June	1 June 1861	
1861	3	8	43	1–80	July	1 July 1861	
			44	81–192	August	1 August 1861	
			45	193–272	September	1 September 1861	
			46	273–352	October	1 October 1861	
			47	353–432	November	1 November 1861	
			48	433–512	December	1 December 1861	
1862	3	9	49	1–80	January	1 January 1862	
			50	81–188	February	1 February 1862	
			51	189–260	March	1 March 1862	
			52	261–340	April	1 April 1862	
			53	341–420	May	1 May 1862	
			54	421–492	June	1 June 1862	
1862	3	10	55	1–80	July	1 July 1862	
			56	81–160	August	1 August 1862	
			57	161–240	September	1 September 1862	
			58	241–320	October	1 October 1862	
			59	321–400	November	1 November 1862	
			60	401–480	December	1 December 1862	
1863	3	11	61	1–72	January	1 January 1863	
			62	73–152	February	1 February 1863	
			63	153–232	March	1 March 1863	
			64	233–312	April	1 April 1863	
			65	313–392	May	1 May 1863	
			66	393–472	June	1 June 1863	

.....continued on the next page

TABLE 2 (continued)

Year	Series	Vol.	Part	Pages	Printed month	Date of publication	Other Date*
1863	3	12	67	1–80	July	1 July 1863	
			68	81–168	August	1 August 1863	
			69	169–248	September	1 September 1863	
			70	249–328	October	1 October 1863	
			71	329–408	November	1 November 1863	
			72	409–480	December	1 December 1863	
1864	3	13	73	1–112	January	1 January 1864	
			74	113–184	February	1 February 1864	
			75	185–264	March	1 March 1864	
			76	265–344	April	1 April 1864	
			77	345–440	May	1 May 1864	
			78	441–528	June	1 June 1864	
1864	3	14	79	1–80	July	1 July 1864	
			80	81–160	August	1 August 1864	
			81	161–240	September	1 September 1864	
			82	241–320	October	1 October 1864	
			83	321–400	November	1 November 1864	
			84	401–	December	1 December 1864	
1865	3	15	85	1–80	January	1 January 1865	
			98	81–160	February	1 February 1865	
			86	161–240	March	1 March 1865	
			87	241–360	April	1 April 1865	
			88	361–436	May	1 May 1865	
			89	437–508	June	1 June 1865	
1865	3	16	90	1–72	July	1 July 1865	
			92	73–144	August	1 August 1865	
			93	145–224	September	1 September 1865	
			94	225–304	October	1 October 1865	
			95	305–384	November	1 November 1865	
			96	385–456	December	1 December 1865	
1866	3	17	97	1–72	January	1 January 1866	
			98	73–152	February	1 February 1866	
			99	153–228	March	1 March 1866	
			100	229–304	April	1 April 1866	
			101	305–376	May	1 May 1866	

.....continued on the next page

TABLE 2 (continued)

Year	Series	Vol.	Part	Pages	Printed month	Date of publication	Other Date*
1866	3	17	102	377–448	June	1 June 1866	
1866	3	18	103	1–80	July	1 July 1866	
			104	81–160	August	1 August 1866	
			105	161–240	September	1 September 1866	
			106	241–320	October	1 October 1866	
			107	321–400	November	1 November 1866	
			108	401–480	December	1 December 1866	
1867	3	19	109	1–72	January	1 January 1867	
			110	73–144	February	1 February 1867	
			111	145–264	March	1 March 1867	
			112	265–344	April	1 April 1867	
			113	345–428	May	1 May 1867	1 May 1867**
			114	429–504	June	1 June 1867	
1867	3	20	115	1–80	July	1 July 1867	
			116	81–152	August	1 August 1867	
			117	153–232	September	1 September 1867	
			118	233–304	October	1 October 1867	1 October 1867**
			119	305–388	November	1 November 1867	
			120	389–460	December	1 December 1867	
1868	4	1	1	1–76	January	1 January 1868	
			2	77–156	February	1 February 1868	
			3	157–232	March	1 March 1868	
			4	233–312	April	1 April 1868	
			5	313–392	May	1 May 1868	
			6	393–492	June	1 June 1868	
1868	4	2	7	1–80	July	1 July 1868	
			8	81–172	August	1 August 1868	
			9	173–236	September	1 September 1868	
			10	237–320	October	1 October 1868	
			11	321–392	November	1 November 1868	
			12	393–464	December	1 December 1868	
1869	4	3	13	1–96	January	1 January 1869	
			14	97–172	February	1 February 1869	
			15	173–248	March	1 March 1869	

.....continued on the next page

TABLE 2 (continued)

Year	Series	Vol.	Part	Pages	Printed month	Date of publication	Other Date*
1869	4	3	16	249–324	April	1 April 1869	
			17	325–400	May	1 May 1869	
			18	401–472	June	1 June 1869	
1869	4	4	19	1–76	July	1 July 1869	
			20	77–140	August	1 August 1869	1 August 1869**
			21	141–220	September	1 September 1869	
			22	221–296	October	1 October 1869	
			23	297–368	November	1 November 1869	
			24	369–448	December	1 December 1869	
1870	4	5	25	1–72	January	1 January 1870	
			26	73–152	February	1 February 1870	
			27	153–232	March	1 March 1870	
			28	233–308	April	1 April 1870	
			29	309–388	May	1 May 1870	
			30	389–460	June	1 June 1870	
1870	4	6	31	1–112	July	1 July 1870	
			32	113–192	August	1 August 1870	
			33	193–272	September	1 September 1870	1 September 1870**
			34	273–352	October	1 October 1870	
			35	353–428	November	1 November 1870	
			36	429–504	December	1 December 1870	
1871	4	7	37	1–72	January	1 January 1871	
			38	73–176	February	1 February 1871	
			39	177–248	March	1 March 1871	
			40	249–316	April	1 April 1871	
			41	317–392	May	1 May 1871	
			42	393–456	June	1 June 1871	
1871	4	8	43	1–72	July	1 July 1871	
			44	73–144	August	1 August 1871	
			45	145–220	September	1 September 1871	1 September 1871**
			46	221–296	October	1 October 1871	
			47	297–372	November	1 November 1871	
			48	373–448	December	1 December 1871	

.....continued on the next page

TABLE 2 (continued)

Year	Series	Vol.	Part	Pages	Printed month	Date of publication	Other Date*
1872	4	9	49	1–104	January	1 January 1872	
			50	105–176	February	1 February 1872	
			51	177–248	March	1 March 1872	
			52	249–328	April	1 April 1872	
			53	329–408	May	1 May 1872	1 May 1872**
			54	408–488	June	1 June 1872	
1872	4	10	55	1–76	July	1 July 1872	
			56	77–152	August	1 August 1872	1 August 1872**
			57	153–232	September	1 September 1872	
			58	233–312	October	1 October 1872	
			59	313–408	November	1 November 1872	
			60	409–480	December	1 December 1872	
1873	4	11	61	1–80	January	1 January 1873	
			62	81–160	February	1 February 1873	
			63	161–240	March	1 March 1873	
			64	241–320	April	1 April 1873	
			65	321–400	May	1 May 1873	
			66	401–476	June	1 June 1873	
1873	4	12	67	1–80	July	1 July 1873	
			68	81–188	August	1 August 1873	
			69	189–268	September	1 September 1873	
			70	269–347	October	1 October 1873	
			71	349–429	November	1 November 1873	
			72	431–506	December	1 December 1873	
1874	4	13	73	1–76	January	1 January 1874	
			74	77–188	February	1 February 1874	1 February 1874**
			75	189–260	March	1 March 1874	
			76	261–332	April	1 April 1874	
			77	333–408	May	1 May 1874	
			78	409–480	June	1 June 1874	
1874	4	14	79	1–96	July	1 July 1874	
			80	97–168	August	1 August 1874	
			81	169–240	September	1 September 1874	
			82	241–316	October	1 October 1874	
			83	317–388	November	1 November 1874	

.....continued on the next page

TABLE 2 (continued)

Year	Series	Vol.	Part	Pages	Printed month	Date of publication	Other Date*
1874	4	14	84	389–468	December	1 December 1874	
1875	4	15	85	1–96	January	1 January 1875	
			86	97–164	February	1 February 1875	
			87	165–236	March	1 March 1875	
			88	237–308	April	1 April 1875	
			89	309–376	May	1 May 1875	
			90	377–448	June	1 June 1875	
1875	4	16	91	1–80	July	1 July 1875	
			92	81–156	August	1 August 1875	
			93	157–236	September	1 September 1875	
			94	237–304	October	1 October 1875	1 October 1875**
			95	305–376	November	1 November 1875	
			96	377–448	December	1 December 1875	1 December 1875**
1876	4	17	97	1–104	January	1 January 1876	
			98	105–184	February	1 February 1876	
			99	185–264	March	1 March 1876	
			100	265–336	April	1 April 1876	
			101	337–416	May	1 May 1876	
			102	417–492	June	1 June 1876	
1876	4	18	103	1–84	July	1 July 1876	
			104	85–196	August	1 August 1876	
			105	197–276	September	1 September 1876	
			106	277–360	October	1 October 1876	
			107	361–440	November	1 November 1876	
			108	441–516	December	1 December 1876	
1877	4	19	109	1–120	January	1 January 1877	
			110	121–200	February	1 February 1877	
			111	201–276	March	1 March 1877	
			112	277–356	April	1 April 1877	
			113	357–436	May	1 May 1877	
			114	437–516	June	1 June 1877	
1877	4	20	115	1–80	July	1 July 1877	
			116	81–160	August	1 August 1877	
			117	161–244	September	1 September 1877	

.....continued on the next page

TABLE 2 (continued)

Year	Series	Vol.	Part	Pages	Printed month	Date of publication	Other Date*
1877	4	20	118	245–368	October	1 October 1877	
			119	369–448	November	1 November 1877	
			120	449–548	December	1 December 1877	
1878	5	1	1	1–103	January	1 January 1878	
			2	105–184	February	1 February 1878	
			3	185–262	March	1 March 1878	
			4	265–352	April	1 April 1878	
			5	353–424	May	1 May 1878	
			6	425–500	June	1 June 1878	
1878	5	2	7	1–112	July	1 July 1878	
			8	113–200	August	1 August 1878	
			9	201–272	September	1 September 1878	
			10	273–352	October	1 October 1878	
			11	353–432	November	1 November 1878	
			12	433–504	December	1 December 1878	
1879	5	3	13	1–96	January	1 January 1879	
			14	97–176	February	1 February 1879	
			15	177–244	March	1 March 1879	
			16	245–320	April	1 April 1879	
			17	321–392	May	1 May 1879	
			18	393–464	June	1 June 1879	
1879	5	4	19	1–100	July	1 July 1879	1 July 1879**
			20	101–172	August	1 August 1879	
			21	173–252	September	1 September 1879	
			22	253–328	October	1 October 1879	
			23	329–400	November	1 November 1879	
			24	401–480	December	1 December 1879	
1880	5	5	25	1–84	January	1 January 1880	
			26	85–196	February	1 February 1880	
			27	197–268	March	1 March 1880	
			28	269–348	April	1 April 1880	
			29	349–436	May	1 May 1880	
			30	437–508	June	1 June 1880	
1880	5	6	31	1–100	July	1 July 1880	1 July 1880
			32	101–172	August	1 August 1880	

.....continued on the next page

TABLE 2 (continued)

Year	Series	Vol.	Part	Pages	Printed month	Date of publication	Other Date*
1880	5	6	33	173–252	September	1 September 1880	
			34	253–328	October	1 October 1880	
			35	329–408	November	1 November 1880	
			36	409–472	December	1 December 1880	
1881	5	7	37	1–75	January	1 January 1881	
			38	77–208	February	1 February 1881	
			39	209–279	March	1 March 1881	
			40	281–355	April	1 April 1881	
			41	357–428	May	1 May 1881	
			42	429–500	June	1 June 1881	
1881	5	8	43	1–72	July	1 July 1881	
			44	73–168	August	1 August 1881	
			45	169–240	September	1 September 1881	
			46	241–324	October	1 October 1881	
			47	325–392	November	1 November 1881	
			48	393–464	December	1 December 1881	
1882	5	9	49	1–72	January	1 January 1882	
			50	73–140	February	1 February 1882	
			51	141–212	March	1 March 1882	
			52	213–340	April	1 April 1882	
			53	341–412	May	1 May 1882	
			54	413–484	June	1 June 1882	
1882	5	10	55	1–80	July	1 July 1882	
			56	81–184	August	1 August 1882	
			57	185–264	September	1 September 1882	
			58	265–336	October	1 October 1882	
			59	337–416	November	1 November 1882	
			60	417–484	December	1 December 1882	
1883	5	11	61	1–72	January	1 January 1883	
			62	73–152	February	1 February 1883	
			63	153–224	March	1 March 1883	
			64	225–296	April	1 April 1883	
			65	297–392	May	1 May 1883	
			66	393–464	June	1 June 1883	

.....continued on the next page

TABLE 2 (continued)

Year	Series	Vol.	Part	Pages	Printed month	Date of publication	Other Date*
1883	5	12	67	1–72	July	1 July 1883	
			68	73–144	August	1 August 1883	
			69	145–212	September	1 September 1883	
			70	213–284	October	1 October 1883	
			71	285–360	November	1 November 1883	
			72	361–432	December	1 December 1883	
1884	5	13	73	1–72	January	1 January 1884	
			74	73–152	February	1 February 1884	1 February 1884
			75	153–232	March	1 March 1884	
			76	233–312	April	1 April 1884	1 April 1884
			77	313–424	May	1 May 1884	
			78	425–496	June	1 June 1884	
1884	5	14	79	1–76	July	1 July 1884	1 July 1884
			80	77–152	August	1 August 1884	
			81	153–224	September	1 September 1884	1 September 1884
			82	225–300	October	30 September 1884*	
			83	301–372	November	1 November 1884	3 November 1884
			84	373–444	December	1 December 1884	1 December 1884
1885	5	15	85	1–76	January	1 January 1885	
			86	77–156	February	1 February 1885	2 February 1885
			87	157–276	March	1 March 1885	3 March 1885
			88	277–356	April	1 April 1885	1 April 1885
			89	357–428	May	1 May 1885	1 May 1885
			90	429–504	June	1 June 1885	1 June 1885
1885	5	16	91	1–76	July	1 July 1885	
			92	77–156	August	1 August 1885	1 August 1885
			93	157–236	September	1 September 1885	
			94	237–316	October	1 October 1885	1 October 1885
			95	317–400	November	1 November 1885	2 November 1885
			96	401–528	December	1 December 1885	1 December 1885
1886	5	17	97	1–88	January	1 January 1886	1 January 1886
			98	89–172	February	1 February 1886	1 February 1886
			99	173–300	March	1 March 1886	1 March 1886
			100	301–388	April	1 April 1886	1 April 1886
			101	389–472	May	1 May 1886	4 May 1886
			102	473–544	June	1 June 1886	5 June 1886

.....continued on the next page

TABLE 2 (continued)

Year	Series	Vol.	Part	Pages	Printed month	Date of publication	Other Date*
1886	5	18	103	1–80	July	29 June 1886*	
			104	81–168	August	1 August 1886	2 August 1886
			105	169–248	September	1 September 1886	1 September 1886
			106	249–324	October	1 October 1886	1 October 1886
			107	325–420	November	1 November 1886	1 November 1886
			108	421–504	December	1 December 1886	1 December 1886
1887	5	19	109	1–80	January	1 January 1887	1 January 1887
			110	81–168	February	1 February 1887	1 February 1887
			111	169–248	March	1 March 1887	1 March 1887
			112	249–324	April	1 April 1887	1 April 1887
			113	325–396	May	1 May 1887	2 May 1887
			114	397–472	June	1 June 1887	1 June 1887
1887	5	20	115	1–80	July	1 July 1887	1 July 1887
			116	81–152	August	1 August 1887	2 August 1887
			117	153–252	September	1 September 1887	1 September 1887
			118	253–320	October	1 October 1887	1 October 1887
			119	321–392	November	1 November 1887	1 November 1887
			120	393–456	December	30 November 1887*	
1888	6	1	1	1–68	January	1 January 1888	
			2	69–164	February	1 February 1888	2 February 1888
			3	165–236	March	1 March 1888	1 March 1888
			4	237–316	April	1 April 1888	2 April 1888
			5	317–388	May	1 May 1888	1 May 1888
			6	389–464	June	1 June 1888	7 June 1888
1888	6	2	7	1–128	July	1 July 1888	2 July 1888
			8	129–200	August	1 August 1888	1 August 1888
			9	201–276	September	1 September 1888	1 September 1888
			10	277–356	October	1 October 1888	1 October 1888
			11	357–432	November	31 October 1888*	
			12	433–516	December	1 December 1888	1 December 1888
1889	6	3	13	1–72	January	1 January 1889	1 January 1889
			14	73–156	February	1 February 1889	
			15	157–292	March	1 March 1889	2 March 1889
			16	293–372	April	1 April 1889	1 April 1889
			17	373–444	May	1 May 1889	1 May 1889
			18	445–520	June	1 June 1889	1 June 1889

.....continued on the next page

TABLE 2 (continued)

Year	Series	Vol.	Part	Pages	Printed month	Date of publication	Other Date*
1889	6	4	19	1–112	July	1 July 1889	1 July 1889
			20	113–184	August	1 August 1889	1 August 1889
			21	185–256	September	1 September 1889	2 September 1889
			22	257–332	October	1 October 1889	
			23	333–408	November	1 November 1889	2 November 1889
			24	409–484	December	1 December 1889	2 December 1889
1890	6	5	25	1–124	January	1 January 1890	1 January 1890
			26	125–200	February	1 February 1890	1 February 1890
			27	201–264	March	1 March 1890	1 March 1890
			28	265–344	April	1 April 1890	1 April 1890
			29	345–416	May	1 May 1890	1 May 1890
			30	417–492	June	1 June 1890	1 June 1890
1890	6	6	31	1–124	July	1 July 1890	1 July 1890
			32	125–196	August	1 August 1890	1 August 1890
			33	197–276	September	1 September 1890	1 September 1890
			34	277–352	October	1 October 1890	1 October 1890
			35	353–424	November	1 November 1890	1 November 1890
			36	425–508	December	1 December 1890	1 December 1890
1891	6	7	37	1–152	January	1 January 1891	
			38	153–236	February	1 February 1891	2 February 1891
			39	237–308	March	1 March 1891	1 March 1891
			40	309–388	April	1 April 1891	1 April 1891
			41	389–468	May	1 May 1891	1 May 1891
			42	469–540	June	1 June 1891	1 June 1891
1891	6	8	43	1–112	July	1 July 1891	1 July 1891
			44	113–192	August	1 August 1891	1 August 1891
			45	193–264	September	1 September 1891	1 September 1891
			46	265–336	October	1 October 1891	1 October 1891
			47	337–412	November	1 November 1891	2 November 1891
			48	413–488	December	1 December 1891	1 December 1891
1892	6	9	49	1–112	January	1 January 1892	2 January 1892
			50	113–188	February	1 February 1892	1 February 1892
			51	189–264	March	1 March 1892	1 March 1892
			52	265–340	April	1 April 1892	1 April 1892
			53	341–416	May	1 May 1892	2 May 1892
			54	417–492	June	1 June 1892	1 June 1892

.....continued on the next page

TABLE 2 (continued)

Year	Series	Vol.	Part	Pages	Printed month	Date of publication	Other Date*
1892	6	10	55	1–120	July	1 July 1892	1 July 1892
			56	121–200	August	1 August 1892	1 August 1892
			57	201–272	September	1 September 1892	1 September 1892
			58	273–344	October	1 October 1892	1 October 1892
			59	345–416	November	1 November 1892	1 November 1892
			60	417–488	December	1 December 1892	1 December 1892
1893	6	11	61	1–72	January	1 January 1893	2 January 1893
			62	73–196	February	1 February 1893	1 February 1893
			63	197–268	March	1 March 1893	1 March 1893
			64	269–340	April	1 April 1893	1 April 1893
			65	341–416	May	1 May 1893	1 May 1893
			66	417–488	June	1 June 1893	1 June 1893
1893	6	12	67	1–76	July	1 July 1893	1 July 1893
			68	77–160	August	1 August 1893	1 August 1893
			69	161–236	September	1 September 1893	2 September 1893
			70	237–340	October	1 October 1893	2 October 1893
			71	341–416	November	1 November 1893	1 November 1893
			72	417–488	December	1 December 1893	1 December 1893
1894	6	13	73	1–136	January	1 January 1894	1 January 1894
			74	137–216	February	1 February 1894	1 February 1894
			75	217–296	March	1 March 1894	1 March 1894
			76	297–376	April	1 April 1894	2 April 1894
			77	377–452	May	1 May 1894	1 May 1894
			78	453–536	June	1 June 1894	1 June 1894
1894	6	14	79	1–80	July	1 July 1894	1 July 1894
			80	81–156	August	1 August 1894	1 August 1894
			81	157–236	September	1 September 1894	1 September 1894
			82	237–316	October	1 October 1894	2 October 1894
			83	317–392	November	1 November 1894	1 November 1894
			84	393–472	December	1 December 1894	2 December 1894
1895	6	15	85	1–132	January	1 January 1895	1 January 1895
			86	133–212	February	1 February 1895	1 February 1895
			87	213–284	March	1 March 1895	1 March 1895
			88	285–376	April	1 April 1895	1 April 1895
			89	377–456	May	1 May 1895	1 May 1895
			90	457–540	June	1 June 1895	1 June 1895

.....continued on the next page

TABLE 2 (continued)

Year	Series	Vol.	Part	Pages	Printed month	Date of publication	Other Date*
1895	6	16	91	1–128	July	28 June 1895*	
			92	129–204	August	1 August 1895	1 August 1895
			93	205–272	September	1 September 1895	2 September 1895
			94	273–352	October	1 October 1895	1 October 1895
			95	353–428	November	1 November 1895	1 November 1895
			96	429–500	December	1 December 1895	2 December 1895
1896	6	17	97	1–112	January	1 January 1896	1 January 1896
			98	113–184	February	1 February 1896	1 February 1896
			99	185–260	March	1 March 1896	2 March 1896
			100	261–328	April	31 March 1896*	
			101	329–408	May	1 May 1896	1 May 1896
			102	409–476	June	30 May 1896*	
1896	6	18	103	1–120	July	30 June 1896*	
			104	121–200	August	1 August 1896	1 August 1896
			105	201–276	September	1 September 1896	1 September 1896
			106	277–348	October	1 October 1896	1 October 1896
			107	349–428	November	1 November 1896	2 November 1896
			108	429–492	December	1 December 1896	1 December 1896
1897	6	19	109	1–124	January	1 January 1897	1 January 1897
			110	125–240	February	1 February 1897	1 February 1897
			111	241–356	March	1 March 1897	1 March 1897
			112	357–472	April	1 April 1897	1 April 1897
			113	473–584	May	1 May 1897	1 May 1897
			114	585–688	June	1 June 1897	1 June 1897
1897	6	20	115	1–116	July	1 July 1897	1 July 1897
			116	117–248	August	1 August 1897	2 August 1897
			117	249–328	September	31 August 1897*	
			118	329–408	October	1 October 1897	1 October 1897
			119	409–488	November	1 November 1897	1 November 1897
			120	489–562	December	1 December 1897	1 December 1897
1898	7	1	1	1–108	January	1 January 1898	1 January 1898
			2	109–184	February	1 February 1898	1 February 1898
			3	185–256	March	1 March 1898	1 March 1898
			4	257–332	April	1 April 1898	1 April 1898
			5	333–412	May	1 May 1898	2 May 1898
			6	413–484	June	1 June 1898	1 June 1898

.....continued on the next page

TABLE 2 (continued)

Year	Series	Vol.	Part	Pages	Printed month	Date of publication	Other Date*
1898	7	2	7	1–76	July	1 July 1898	1 July 1898
			8	77–196	August	1 August 1898	2 August 1898
			9	197–276	September	1 September 1898	1 September 1898
			10	277–356	October	1 October 1898	1 October 1898
			11	357–428	November	1 November 1898	1 November 1898
			12	429–500	December	1 December 1898	1 December 1898
1899	7	3	13	1–120	January	1 January 1899	2 January 1899
			14	121–196	February	1 February 1899	1 February 1899
			15	197–272	March	1 March 1899	1 March 1899
			16	273–352	April	31 March 1899*	
			17	353–428	May	1 May 1899	1 May 1899
			18	429–500	June	1 June 1899	1 June 1899
1899	7	4	19	1–80	July	1 July 1899	1 July 1898
			20	81–156	August	1 August 1899	1 August 1898
			21	157–236	September	31 August 1899*	
			22	237–316	October	1 October 1899	2 October 1898
			23	317–396	November	1 November 1899	1 November 1898
			24	397–472	December	1 December 1899	1 December 1898
1900	7	5	25	1–160	January	1 January 1900	1 January 1900
			26	161–240	February	1 February 1900	1 February 1900
			27	241–320	March	1 March 1900	1 March 1900
			28	321–400	April	1 April 1900	1 April 1900
			29	401–480	May	1 May 1900	1 May 1900
			30	481–552	June	1 June 1900	1 June 1900
1900	7	6	31	1–160	July	1 July 1900	2 July 1900
			32	161–248	August	1 August 1900	1 August 1900
			33	249–344	September	1 September 1900	1 September 1900
			34	345–428	October	1 October 1900	1 October 1900
			35	429–508	November	1 November 1900	1 November 1900
			36	509–588	December	1 December 1900	1 December 1900
1901	7	7	37	1–140	January	1 January 1901	1 January 1901
			38	141–220	February	1 February 1901	1 February 1901
			39	221–300	March	1 March 1901	1 March 1901
			40	301–392	April	1 April 1901	1 April 1901
			41	393–488	May	1 May 1901	1 May 1901
			42	489–568	June	1 June 1901	1 June 1901

.....continued on the next page

TABLE 2 (continued)

Year	Series	Vol.	Part	Pages	Printed month	Date of publication	Other Date*
1901	7	8	43	1–76	July	1 July 1901	2 July 1901
			44	77–164	August	1 August 1901	1 August 1901
			45	165–260	September	1 September 1901	3 September 1901
			46	261–336	October	1 October 1901	2 October 1901
			47	337–496	November	1 November 1901	2 November 1901
			48	497–572	December	1 December 1901	2 December 1901
1902	7	9	49	1–76	January	1 January 1902	2 January 1902
			50	77–156	February	1 February 1902	1 February 1902
			51	157–236	March	1 March 1902	1 March 1902
			52	237–320	April	1 April 1902	1 April 1902
			53	321–400	May	1 May 1902	1 May 1902
			54	401–472	June	1 June 1902	2 June 1902
1902	7	10	55	1–76	July	1 July 1902	1 July 1902
			56	77–172	August	1 August 1902	1 August 1902
			57	173–264	September	1 September 1902	1 September 1902
			58	265–340	October	1 October 1902	3 October 1902
			59	341–420	November	1 November 1902	3 November 1902
			60	421–524	December	1 December 1902	2 December 1902
1903	7	11	61	1–140	January	1 January 1903	3 January 1903
			62	141–244	February	1 February 1903	2 February 1903
			63	245–336	March	1 March 1903	2 March 1903
			64	337–432	April	1 April 1903	2 April 1903
			65	433–528	May	1 May 1903	2 May 1903
			66	529–632	June	30 May 1903*	
1903	7	12	67	1–192	July	1 July 1903	2 July 1903
			68	193–288	August	1 August 1903	4 August 1903
			69	289–372	September	1 September 1903	3 September 1903
			70	373–468	October	1 October 1903	4 October 1903
			71	469–564	November	1 November 1903	4 November 1903
			72	565–644	December	1 December 1903	3 December 1903
1904	7	13	73	1–80	January	1 January 1904	1 January 1904
			74	81–160	February	1 February 1904	1 February 1904
			75	161–240	March	1 March 1904	1 March 1904
			76	241–328	April	1 April 1904	9 April 1904
			77	329–424	May	1 May 1904	7 May 1904
			78	425–520	June	1 June 1904	1 June 1904

.....continued on the next page

TABLE 2 (continued)

Year	Series	Vol.	Part	Pages	Printed month	Date of publication	Other Date*
1904	7	14	79	1–80	July	1 July 1904	1 July 1904
			80	81–164	August	1 August 1904	1 August 1904
			81	165–244	September	31 August 1904*	
			82	245–312	October	1 October 1904	1 October 1904
			83	313–388	November	1 November 1904	1 November 1904
			84	389–468	December	1 December 1904	1 December 1904
1905	7	15	85	1–148	January	1 January 1905	3 January 1905
			86	149–232	February	31 January 1905*	
			87	233–328	March	1 March 1905	2 March 1905
			88	329–424	April	1 April 1905	1 April 1905
			89	425–520	May	1 May 1905	2 May 1905
			90	521–604	June	1 June 1905	2 June 1905
1905	7	16	91	1–104	July	1 July 1905	3 July 1905
			92	105–264	August	1 August 1905	1 August 1905
			93	265–368	September	1 September 1905	1 September 1905
			94	369–464	October	1 October 1905	2 October 1905
			95	465–576	November	1 November 1905	2 November 1905
			96	577–684	December	1 December 1905	2 December 1905
1906	7	17	97	1–172	January	1 January 1906	1 January 1906
			98	173–252	February	1 February 1906	3 February 1906
			99	253–336	March	1 March 1906	3 March 1906
			100	337–432	April	1 April 1906	2 April 1906
			101	433–512	May	1 May 1906	1 May 1906
			102	513–588	June	1 June 1906	
1906	7	18	103	1–76	July	1 July 1906	2 July 1906
			104	77–156	August	1 August 1906	4 August 1906
			105	157–244	September	1 September 1906	3 September 1906
			106	245–320	October	1 October 1906	1 October 1906
			107	321–396	November	1 November 1906	2 November 1906
			108	397–480	December	1 December 1906	3 December 1906
1907	7	19	109	1–128	January	1 January 1907	1 January 1907
			110	129–200	February	1 February 1907	2 February 1907
			111	201–276	March	1 March 1907	1 March 1907
			112	277–360	April	30 March 1907*	
			113	361–456	May	30 April 1907*	
			114	457–548	June	1 June 1907	3 June 1907

.....continued on the next page

TABLE 2 (continued)

Year	Series	Vol.	Part	Pages	Printed month	Date of publication	Other Date*
1907	7	20	115	1–80	July	1 July 1907	3 July 1907
			116	81–168	August	1 August 1907	1 August 1907
			117	169–296	September	1 September 1907	2 September 1907
			118	297–376	October	1 October 1907	1 October 1907
			119	377–456	November	1 November 1907	4 November 1907
			120	457–532	December	1 December 1907	3 December 1907
1908	8	1	1	1–128	January	1 January 1908	1 January 1908
			2	129–208	February	1 February 1908	2 February 1908
			3	209–288	March	1 March 1908	2 March 1908
			4	289–372	April	1 April 1908	3 April 1908
			5	373–452	May	1 May 1908	2 May 1908
			6	453–540	June	1 June 1908	1 June 1908
1908	8	2	7	1–136	July	1 July 1908	3 July 1908
			8	137–224	August	1 August 1908	1 August 1908
			9	225–308	September	1 September 1908	3 September 1908
			10	309–392	October	1 October 1908	5 October 1908
			11	393–468	November	1 November 1908	3 November 1908
			12	469–552	December	1 December 1908	4 December 1908
1909	8	3	13	1–88	January	1 January 1909	2 January 1909
			14	89–236	February	1 February 1909	4 February 1909
			15	237–316	March	1 March 1909	2 March 1909
			16	317–384	April	1 April 1909	2 April 1909
			17	385–456	May	1 May 1909	3 May 1909
			18	457–536	June	29 May 1909*	
1909	8	4	19	1–72	July	1 July 1909	2 July 1909
			20	73–164	August	1 August 1909	2 August 1909
			21	165–308	September	1 September 1909	2 September 1909
			22	309–392	October	1 October 1909	4 October 1909
			23	393–484	November	1 November 1909	2 November 1909
			24	485–560	December	1 December 1909	4 December 1909
1910	8	5	25	1–132	January	1 January 1910	4 January 1910
			26	133–216	February	1 February 1910	2 February 1910
			27	217–296	March	1 March 1910	2 March 1910
			28	297–392	April	1 April 1910	3 April 1910
			29	393–464	May	1 May 1910	3 May 1910
			30	465–544	June	1 June 1910	1 June 1910

.....continued on the next page

TABLE 2 (continued)

Year	Series	Vol.	Part	Pages	Printed month	Date of publication	Other Date*
1910	8	6	31	1–144	July	1 July 1910	2 July 1910
			32	145–248	August	1 August 1910	2 August 1910
			33	249–336	September	1 September 1910	3 September 1910
			34	337–440	October	1 October 1910	3 October 1910
			35	441–536	November	1 November 1910	3 November 1910
			36	537–636	December	1 December 1910	3 December 1910
1911	8	7	37	1–144	January	1 January 1911	2 January 1911
			38	145–224	February	1 February 1911	1 February 1911
			39	225–296	March	1 March 1911	2 March 1911
			40	297–416	April	1 April 1911	1 April 1911
			41	417–552	May	29 April 1911*	
			42	553–656	June	1 June 1911	1 June 1911
1911	8	8	43	1–192	July	1 July 1911	3 July 1911
			44	193–292	August	1 August 1911	1 August 1911
			45	293–392	September	29 August 1911*	
			46	393–552	October	1 October 1911	2 October 1911
			47	553–684	November	1 November 1911	2 November 1911
			48	685–788	December	1 December 1911	4 December 1911
1912	8	9	49	1–180	January	1 January 1912	3 January 1912
			50	181–276	February	1 February 1912	1 February 1912
			51	277–376	March	1 March 1912	1 March 1912
			52	377–488	April	1 April 1912	3 April 1912
			53	489–600	May	1 May 1912	1 May 1912
			54	601–696	June	1 June 1912	4 June 1912
1912	8	10	55	1–168	July	1 July 1912	2 July 1912
			56	169–272	August	1 August 1912	1 August 1912
			57	273–360	September	1 September 1912	2 September 1912
			58	361–460	October	1 October 1912	2 October 1912
			59	461–556	November	1 November 1912	1 November 1912
			60	557–648	December	1 December 1912	2 December 1912
1913	8	11	61	1–168	January	1 January 1913	2 January 1913
			62	169–272	February	1 February 1913	3 February 1913
			63	273–360	March	1 March 1913	1 March 1913
			64	361–428	April	1 April 1913	2 April 1913
			65	429–508	May	1 May 1913	1 May 1913
			66	509–596	June	1 June 1913	2 June 1913

.....continued on the next page

TABLE 2 (continued)

Year	Series	Vol.	Part	Pages	Printed month	Date of publication	Other Date*
1913	8	12	67	1–152	July	1 July 1913	3 July 1913
			68	153–244	August	1 August 1913	2 August 1913
			69	245–320	September	1 September 1913	1 September 1913
			70	321–408	October	1 October 1913	1 October 1913
			71	409–504	November	1 November 1913	1 November 1913
			72	505–608	December	1 December 1913	2 December 1913
1914	8	13	73	1–196	January	1 January 1914	1 January 1914
			74	197–276	February	1 February 1914	3 February 1914
			75	277–368	March	1 March 1914	3 March 1914
			76	269–448	April	1 April 1914	1 April 1914
			77	449–528	May	1 May 1914	2 May 1914
			78	529–612	June	1 June 1914	2 June 1914
1914	8	14	79	1–144	July	1 July 1914	3 July 1914
			80	145–208	August	1 August 1914	1 August 1914
			81	209–276	September	1 September 1914	1 September 1914
			82	277–360	October	1 October 1914	1 October 1914
			83	361–428	November	1 November 1914	3 November 1914
			84	429–500	December	1 December 1914	1 December 1914
1915	8	15	85	1–180	January	1 January 1915	4 January 1915
			86	181–260	February	1 February 1915	2 February 1915
			87	261–340	March	1 March 1915	1 March 1915
			88	341–424	April	1 April 1915	3 April 1915
			89	425–528	May	1 May 1915	1 May 1915
			90	529–604	June	1 June 1915	1 June 1915
1915	8	16	91	1–84	July	1 July 1915	1 July 1915
			92	85–152	August	1 August 1915	3 August 1915
			93	153–232	September	1 September 1915	3 September 1915
			94	233–380	October	1 October 1915	2 October 1915
			95	381–448	November	1 November 1915	2 November 1915
			96	449–520	December	1 December 1915	1 December 1915
1916	8	17	97	1–148	January	1 January 1916	3 January 1916
			98	149–212	February	1 February 1916	2 February 1916
			99	213–276	March	1 March 1916	1 March 1916
			100	277–348	April	1 April 1916	1 April 1916
			101	349–412	May	1 May 1916	1 May 1916
			102	413–484	June	1 June 1916	2 June 1916

.....continued on the next page

TABLE 2 (continued)

Year	Series	Vol.	Part	Pages	Printed month	Date of publication	Other Date*
1916	8	18	103	1–160	July	1 July 1916	3 July 1916
			104	161–244	August	1 August 1916	2 August 1916
			105	245–316	September	1 September 1916	1 September 1916
			106	317–380	October	30 September 1916*	
			107	381–448	November	1 November 1916	2 November 1916
			108	449–508	December	1 December 1916	2 December 1916
1917	8	19	109	1–160	January	1 January 1917	3 January 1917
			110	161–232	February	1 February 1917	6 February 1917
			111	233–296	March	1 March 1917	2 March 1917
			112	297–360	April	1 April 1917	2 April 1917
			113	361–424	May	1 May 1917	3 May 1917
			114	425–488	June	1 June 1917	2 June 1917
1917	8	20	115	1–136	July	1 July 1917	3 July 1917
			116	137–200	August	1 August 1917	1 August 1917
			117	201–264	September	1 September 1917	3 September 1917
			118	265–328	October	1 October 1917	1 October 1917
			119	329–384	November	30 October 1917*	
			120	385–448	December	1 December 1917	3 December 1917
1918	9	1	1	1–136	January	1 January 1918	4 January 1918
			2	137–200	February	1 February 1918	8 February 1918
			3	201–264	March	1 March 1918	3 March 1918
			4	265–328	April	28 March 1918*	
			5	329–384	May	1 May 1918	1 May 1918
			6	385–440	June	1 June 1918	1 June 1918
1918	9	2	7	1–124	July	1 July 1918	1 July 1918
			8	125–180	August	1 August 1918	1 August 1918
			9	181–240	September	31 August 1918*	
			10	241–392	October	1 October 1918	1 October 1918
			11	393–448	November	1 November 1918	1 November 1918
			12	449–496	December	30 November 1918*	
1919	9	3	13	1–164	January	1 January 1919	2 January 1919
			14	165–228	February	1 February 1919	1 February 1919
			15	229–292	March	1 March 1919	1 March 1919
			16	293–436	April	1 April 1919	1 April 1919
			17	437–500	May	1 May 1919	3 May 1919
			18	501–564	June	1 June 1919	12 June 1919

.....continued on the next page

TABLE 2 (continued)

Year	Series	Vol.	Part	Pages	Printed month	Date of publication	Other Date*
1919	9	4	19	1–52	July	1 July 1919	1 July 1919
			20	53–104	August	1 August 1919	1 August 1919
			21	105–156	September	30 August 1919*	
			22	157–304	October	1 October 1919	1 October 1919
			23	305–360	November	31 October 1919*	
			24	361–416	December	29 November 1919*	
1920	9	5	25	1–152	January	1 January 1920	1 January 1920
			26	153–208	February	1 February 1920	3 February 1920
			27	209–320	March	1 March 1920	1 March 1920
			28	321–376	April	1 April 1920	1 April 1920
			29	377–432	May	1 May 1920	1 May 1920
			30	433–488	June	1 June 1920	1 June 1920
1920	9	6	31	1–176	July	1 July 1920	1 July 1920
			32	177–248	August	1 August 1920	2 August 1920
			33	249–304	September	1 September 1920	1 September 1920
			34	305–440	October	1 October 1920	1 October 1920
			35	441–492	November	1 November 1920	1 November 1920
			36	493–544	December	30 November 1920*	
1921	9	7	37	1–144	January	1 January 1921	10 January 1921
			38	145–200	February	1 February 1921	10 February 1921
			39	201–256	March	1 March 1921	2 March 1921
			40	257–388	April	1 April 1921	4 April 1921
			41	389–452	May	1 May 1921	5 May 1921
			42	453–528	June	1 June 1921	1 June 1921
1921	9	8	43	1–144	July	1 July 1921	1 July 1921
			44	145–224	August	29 July 1921*	
			45	225–368	September	1 September 1921	6 September 1921
			46	369–448	October	1 October 1921	1 October 1921
			47	449–600	November	31 October 1921*	
			48	601–654	December	1 December 1921	2 December 1921
1922	9	9	49	1–144	January	1 January 1922	4 January 1922
			50	145–216	February	1 February 1922	2 February 1922
			51	217–280	March	1 March 1922	4 March 1922
			52	281–456	April	1 April 1922	8 April 1922
			53	457–632	May	1 May 1922	3 May 1922
			54	633–697	June	30 May 1922*	

.....continued on the next page

TABLE 2 (continued)

Year	Series	Vol.	Part	Pages	Printed month	Date of publication	Other Date*
1922	9	10	55	1–176	July	1 July 1922	3 July 1922
			56	177–248	August	1 August 1922	4 August 1922
			57	249–308	September	1 September 1922	4 September 1922
			58	309–484	October	1 October 1922	5 October 1922
			59	485–556	November	31 October 1922*	
			60	557–(573)	December	31 November 1922*	
1923	9	11	61	1–192	January	1 January 1923	3 January 1923
			62	193–272	February	31 January 1923*	
			63	273–344	March	1 March 1923	1 March 1923
			64	345–568	April	1 April 1923	4 April 1923
			65	569–640	May	1 May 1923	2 May 1923
			66	641–712	June	1 June 1923	1 June 1923
1923	9	12	67	1–176	July	1 July 1923	1 July 1923
			68	177–264	August	31 July 1923*	
			69	265–344	September	31 August 1923*	
			70	345–544	October	1 October 1923	1 October 1923
			71	545–632	November	31 October 1923*	
			72	633–704	December	27 November 1923*	
1924	9	13	73	1–176	January	1 January 1924	3 January 1924
			74	177–248	February	1 February 1924	1 February 1924
			75	249–312	March	1 March 1924	1 March 1924
			76	313–480	April	1 April 1924	3 April 1924
			77	481–560	May	1 May 1924	2 May 1924
			80	561–625	June	1 June 1924	3 June 1924
1924	9	14	81	1–192	July	1 July 1924	2 July 1924
			82	193–256	August	1 August 1924	2 August 1924
			83	257–344	September	1 September 1924	2 September 1924
			84	345–512	October	1 October 1924	2 October 1924
			85	513–576	November	1 November 1924	3 November 1924
			86	577–644	December	1 December 1924	1 December 1924
1925	9	15	87	1–168	January	31 December 1924*	
			88	169–352	February	1 February 1925	6 February 1925
			89	353–424	March	1 March 1925	4 March 1925
			90	425–504	April	1 April 1925	1 April 1925
			91	505–600	May	1 May 1925	1 May 1925
			92	601–688	June	1 June 1925	5 June 1925

.....continued on the next page

TABLE 2 (continued)

Year	Series	Vol.	Part	Pages	Printed month	Date of publication	Other Date*
1925	9	16	93	1–208	July	1 July 1925	2 July 1925
			94	209–288	August	1 August 1925	4 August 1925
			95	289–360	September	1 September 1925	2 September 1925
			96	361–432	October	1 October 1925	1 October 1925
			97	433–600	November	1 November 1925	5 November 1925
			98	601–672	December	1 December 1925	1 December 1925
1926	9	17	99	1–192	January	1 January 1926	2 January 1926
			100	193–272	February	1 February 1926	2 February 1926
			101	273–352	March	1 March 1926	2 March 1926
			102	353–424	April	1 April 1926	6 April 1926
			103	425–624	May	1 May 1926	7 May 1926
			104	625–688	June	1 June 1926	1 June 1926
1926	9	18	105	1–168	July	1 July 1926	7 July 1926
			106	169–240	August	30 July 1926*	
			107	241–312	September	1 September 1926	4 September 1926
			106	313–384	October	1 October 1926	2 October 1926
			107	385–608	November	1 November 1926	2 November 1926
			108	609–680	December	1 December 1926	1 December 1926
1927	9	19	109	1160	January	1 January 1927	10 January 1927
			110	161–312	February	1 February 1927	7 February 1927
			111	313–384	March	1 March 1927	5 March 1927
			112	385–512	April	1 April 1927	2 April 1927
			113	513–592	May	1 May 1927	4 May 1927
			114	593–664	June	1 June 1927	11 June 1927
1927	9	20	115	1–176	July	1 July 1927	4 July 1927
			116	177–248	August	1 August 1927	5 August 1927
			117	249–320	September	1 September 1927	5 September 1927
			118	321–488	October	1 October 1927	4 October 1927
			119	489–560	November	1 November 1927	4 November 1927
			120	561–633	December	1 December 1927	5 December 1927
1928	10	1	1	1–168	January	1 January 1928	2 January 1928
			2	169–328	February	1 February 1928	2 February 1928
			3	329–400	March	1 March 1928	6 March 1928
			4	401–576	April	1 April 1928	3 April 1928
			5	577–648	May	1 May 1928	3 May 1928
			6	649–720	June	1 June 1928	2 June 1928

.....continued on the next page

TABLE 2 (continued)

Year	Series	Vol.	Part	Pages	Printed month	Date of publication	Other Date*
1928	10	2	7	1–176	July	1 July 1928	5 July 1928
			8	177–248	August	1 August 1928	3 August 1928
			9	249–320	September	1 September 1928	3 September 1928
			10	321–392	October	1 October 1928	5 October 1928
			11	393–536	November	1 November 1928	3 November 1928
			12	537–608	December	1 December 1928	3 December 1928
1929	10	3	13	1–144	January	1 January 1929	4 January 1929
			14	145–216	February	1 February 1929	5 February 1929
			15	217–360	March	1 March 1929	5 March 1929
			16	361–432	April	1 April 1929	6 April 1929
			17	433–568	May	1 May 1929	1 May 1929
			18	569–640	June	1 June 1929	5 June 1929
1929	10	4	19	1–152	July	1 July 1929	3 July 1929
			20	153–232	August	1 August 1929	6 August 1929
			21	233–304	September	1 September 1929	5 September 1929
			22	305–384	October	1 October 1929	3 October 1929
			23	385–528	November	1 November 1929	5 November 1929
			24	529–600	December	1 December 1929	4 December 1929
1930	10	5	25	1–176	January	1 January 1930	4 January 1930
			26	177–256	February	1 February 1930	5 February 1930
			27	257–336	March	1 March 1930	5 March 1930
			28	337–416	April	1 April 1930	7 April 1930
			29	417–584	May	1 May 1930	3 May 1930
			30	585–680	June	1 June 1930	4 June 1930
1930	10	6	31	1–160	July	1 July 1930	3 July 1930
			32	161–232	August	1 August 1930	7 August 1930
			32a	233–286	August	1 August 1930	7 August 1930
			33	287–366	September	1 September 1930	4 September 1930
			34	367–550	October	1 October 1930	2 October 1930
			35	551–622	November	1 November 1930	5 November 1930
			36	623–702	December	1 December 1930	4 December 1930
1931	10	7	37	1–152	January	1 January 1931	8 January 1931
			38	153–224	February	1 February 1931	3 February 1931
			39	225–296	March	1 March 1931	4 March 1931
			40	297–440	April	1 April 1931	2 April 1931
			41	441–512	May	1 May 1931	2 May 1931
			42	513–584	June	1 June 1931	4 June 1931

.....continued on the next page

TABLE 2 (continued)

Year	Series	Vol.	Part	Pages	Printed month	Date of publication	Other Date*
1931	10	8	43	1–144	July	1 July 1931	2 July 1931
			44	145–216	August	1 August 1931	4 August 1931
			45	217–288	September	1 September 1931	5 September 1931
			46	289–424	October	1 October 1931	6 October 1931
			47	425–560	November	1 November 1931	9 November 1931
			48	561–624	December	1 December 1931	2 December 1931
1932	10	9	49	1–132	January	1 January 1932	6 January 1932
			50	133–200	February	1 February 1932	2 February 1932
			51	201–340	March	1 March 1932	5 March 1932
			52	341–420	April	1 April 1932	1 April 1932
			53	421–500	May	1 May 1932	4 May 1932
			54	501–580	June	1 June 1932	2 June 1932
1932	10	10	55	1–136	July	1 July 1932	1 July 1932
			56	137–216	August	1 August 1932	4 August 1932
			57	217–296	September	1 September 1932	8 September 1932
			58	297–440	October	1 October 1932	4 October 1932
			59	441–524	November	1 November 1932	1 November 1932
			60	525–604	December	30 November 1932*	
1933	10	11	61	1–166	January	31 December 1932*	
			62	167–254	February	1 February 1933	2 February 1933
			63	255–422	March	1 March 1933	1 March 1933
			64	423–518	April	1 April 1933	3 April 1933
			65	519–614	May	1 May 1933	2 May 1933
			66	615–694	June	1 June 1933	2 June 1933
1933	10	12	67	1–140	July	1 July 1933	1 July 1933
			68	141–224	August	1 August 1933	2 August 1933
			69	225–304	September	1 September 1933	1 September 1933
			70	305–464	October	1 October 1933	2 October 1933
			71	465–548	November	1 November 1933	1 November 1933
			72	549–630	December	1 December 1933	1 December 1933
1934	10	13	73	1–160	January	1 January 1934	1 January 1934
			74	161–320	February	1 February 1934	2 February 1934
			75	321–400	March	1 March 1934	1 March 1934
			76	401–480	April	28 March 1934*	
			77	481–560	May	30 April 1934*	
			78	561–640	June	31 May 1934*	

.....continued on the next page

TABLE 2 (continued)

Year	Series	Vol.	Part	Pages	Printed month	Date of publication	Other Date*
1934	10	14	79	1–160	July	1 July 1934	2 July 1934
			80	161–320	August	1 August 1934	1 August 1934
			81	321–4000	September	1 September 1934	4 September 1934
			82	401–480	October	1 October 1934	1 October 1934
			83	481–560	November	31 October 1934*	
			84	561–640	December	1 December 1934	3 December 1934
1935	10	15	85	1–160	January	1 January 1935	4 January 1935
			86	161–320	February	1 February 1935	1 February 1935
			87	321–408	March	28 February 1935*	
			88	409–496	April	30 March 1935*	
			89	497–592	May	1 May 1935	1 May 1935
			90	593–680	June	31 May 1935*	
1935	10	16	91	1–160	July	1 July 1935	1 July 1935
			92	161–320	August	1 August 1935	2 August 1935
			93	321–404	September	31 August 1935*	
			94	405–488	October	1 October 1935	1 October 1935
			95	489–572	November	1 November 1935	1 November 1935
			96	573–652	December	30 November 1935*	
1936	10	17	97	1–160	January	1 January 1936	1 January 1936
			98	161–328	February	1 February 1936	1 February 1936
			99	329–412	March	1 March 1936	2 March 1936
			100	413–492	April	1 April 1936	1 April 1936
			101	493–576	May	1 May 1936	4 May 1936
			102	577–656	June	1 June 1936	5 June 1936
1936	10	18	103	1–160	July	30 June 1936*	
			104	161–320	August	1 August 1936	1 August 1936
			105	321–402	September	1 September 1936	5 September 1936
			106	403–482	October	1 October 1936	2 October 1936
			107	483–562	November	1 November 1936	1 November 1936
			108	563–642	December	1 December 1936	1 December 1936
1937	10	19	109	1–160	January	1 January 1937	4 January 1937
			110	161–312	February	1 February 1937	2 February 1937
			111	313–392	March	1 March 1937	1 March 1937
			112	393–472	April	1 April 1937	7 April 1937
			113	473–552	May	1 May 1937	3 May 1937
			114	553–632	June	1 June 1937	11 June 1937

.....continued on the next page

TABLE 2 (continued)

Year	Series	Vol.	Part	Pages	Printed month	Date of publication	Other Date*
1937	10	20	115	1–160	July	1 July 1937	16 July 1937
			116	161–240	August	31 July 1937*	
			117	241–400	September	1 September 1937	1 September 1937
			118	401–480	October	1 October 1937	1 October 1937
			119	481–560	November	1 November 1937	10 November 1937
			120	561–640	December	1 December 1937	1 December 1937
1938	11	1	1	1–160	January	1 January 1938	1 January 1938
			2	161–240	February	1 February 1938	1 February 1938
			3	241–320	March	1 March 1938	1 March 1938
			4	321–480	April	1 April 1938	1 April 1938
			5	481–560	May	30 April 1938*	
			6	561–640	June	1 June 1938	1 June 1938
1938	11	2	7	1–80	July	1 July 1938	1 July 1938
			8	81–240	August	1 August 1938	3 August 1938
			9	241–320	September	1 September 1938	2 September 1938
			10	321–400	October	1 October 1938	3 October 1938
			11	401–560	November	1 November 1938	1 November 1938
			12	561–640	December	1 December 1938	1 December 1938
1939	11	3	13	1–160	January	31 December 1938*	
			14	161–240	February	1 February 1939	1 February 1939
			15	241–400	March	1 March 1939	1 March 1939
			16	401–480	April	1 April 1939	1 April 1939
			17	481–560	May	1 May 1939	1 May 1939
			18	561–644	June	1 June 1939	2 June 1939
1939	11	4	19	1–160	July	1 July 1939	1 July 1939
			20	161–320	August	1 August 1939	1 August 1939
			21	321–400	September	1 September 1939	1 September 1939
			22	401–472	October	1 October 1939	3 October 1939
			23	473–544	November	1 November 1939	1 November 1939
			24	545–616	December	1 December 1939	1 December 1939
1940	11	5	25	1–128	January	1 January 1940	2 January 1940
			26	129–256	February	1 February 1940	1 February 1940
			27	257–328	March	1 March 1940	2 March 1940
			28	329–400	April	1 April 1940	1 April 1940
			29	401–472	May	1 May 1940	1 May 1940
			30	473–539	June	1 June 1940	1 June 1940

.....continued on the next page

TABLE 2 (continued)

Year	Series	Vol.	Part	Pages	Printed month	Date of publication	Other Date*
1940	11	6	31	1–128	July	29 June 1940*	
			32	129–248	August	1 August 1940	7 August 1940
			33	249–320	September	1 September 1940	3 September 1940
			34	321–392	October	1 October 1940	2 October 1940
			35	393–464	November	1 November 1940	4 November 1940
			36	465–535	December	1 December 1940	9 December 1940
1941	11	7	37	1–128	January	1 January 1941	2 January 1941
			38	129–256	February	1 February 1941	4 February 1941
			39	257–328	March	1 March 1941	11 March 1941
			40	329–400	April	1 April 1941	4 April 1941
			41	401–472	May	1 May 1941	14 May 1941
			42	473–543	June	1 June 1941	13 June 1941
1941	11	8	43	1–72	July	1 July 1941	4 July 1941
			44	73–144	August	1 August 1941	9 August 1941
			45	145–272	September	1 September 1941	5 September 1941
			46	273–344	October	1 October 1941	6 October 1941
			47	345–472	November	1 November 1941	7 November 1941
			48	473–535	December	1 December 1941	2 December 1941
1942	11	9	49	1–72	January	1 January 1942	1 January 1942
			50	73–140	February	1 February 1942	3 February 1942
			51	141–252	March	1 March 1942	7 March 1942
			52	253–320	April	16 April 1942*	
			53	321–392	May	22 May 1942*	
			54	393–464	June	22 June 1942*	
			55	465–536	July	15 July 1942*	
			56	537–648	August	20 August 1942*	
			57	649–720	September	9 September 1942*	
			58	721–792	October	10 October 1942*	
			59	793–864	November	10 November 1942*	
			60	865–935	December	10 December 1942*	
1943	11	10	61	1–72	January	16 January 1943*	
			62	73–144	February	17 February 1943*	
			63	145–216	March	25 March 1943*	
			64	217–288	April	5 May 1943*	
			65	289–360	May	2 June 1943*	
			66	361–432	June	7 July 1943*	
			67	433–504	July	10 August 1943*	

.....continued on the next page

TABLE 2 (continued)

Year	Series	Vol.	Part	Pages	Printed month	Date of publication	Other Date*
1943	11	10	68	505–576	August	1 September 1943*	
			69	577–648	September	14 October 1943*	
			70	649–720	October	20 November 1943*	
			71	721–792	November	20 December 1943*	
			72	793–864	December	19 January 1944*	
1944	11	11	73	1–72	January	21 February 1944*	
			74	73–144	February	18 March 1944*	
			75	145–208	March	26 May 1944*	
			76	209–272	April	3 July 1944*	
			77	273–344	May	[bef. 10 August 1944]	
			78	345–418	June	10 August 1944*	
			79	419–486	July	28 August 1944*	
			80	487–558	August	4 October 1944*	
			81	559–630	September	2 November 1944*	
			82	631–704	October	22 December 1944*	
			83	705–778	November	26 January 1945***	1 February 1945
			84	779–847	December	12 April 1945***	14 April 1945
1945	11	12	85	1–68	January	24 May 1945***	26 May 1945
			86	69–140	February	10 July 1945***	13 July 1945
			87	141–212	March	15 August 1945***	28 August 1945
			88	213–284	April	18 September 1945***	22 September 1945
			89	285–356	May	16 November 1945***	18 December 1945
			90	357–428	June	9 January 1946***	12 January 1946
			91	429–500	July	20 February 1946***	25 February 1946
			92	501–568	August	1 May 1946***	4 May 1946
			93	569–640	September	10 July 1946***	15 July 1946
			94	641–712	October	20 August 1946***	21 August 1946
			95	713–784	November	19 September 1946***	23 September 1946
			96	785–856	December	9 October 1946***	10 October 1946
1946	11	13	97	1–72	January	31 October 1946***	3 January 1947
			98	73–144	February	5 December 1946***	13 February 1947
			99	145–216	March	8 January 1947***	13 February 1947
			100	217–288	April	22 January 1947***	20 August 1947
			101	289–360	May	11 March 1947***	3 May 1947
			102	361–432	June	29 April 1947***	3 May 1947
			103	433–504	July	25 June 1947***	4 July 1947
			104	505–576	August	7 August 1947***	15 August 1947
			105	577–648	September	15 August 1947***	15 August 1947

.....continued on the next page

TABLE 2 (continued)

Year	Series	Vol.	Part	Pages	Printed month	Date of publication	Other Date*
1946	11	13	106	649–720	October	9 September 1947***	12 September 1947
			107	721–792	November	13 October 1947***	14 October 1947
			108	793–864	December	31 October 1947***	3 November 1947
1947	11	14	109	1–80	January	19 November 1947***	20 November 1947
			110	81–152	February	10 December 1947***	11 December 1947
			111	153–224	March	23 December 1947***	31 December 1947
			112	225–296	April	7 January 1948***	8 January 1948
			113	297–372	May	4 February 1948***	5 February 1948
			114	373–444	June	2 March 1948***	3 March 1948
			115	445–516	July	2 April 1948***	6 April 1948
			116	517–588	August	18 April 1948***	21 April 1948
			117	589–660	September	7 June 1948***	8 June 1948
			118	661–736	October	18 June 1948***	19 June 1948
			119	737–816	November	16 July 1948***	19 July 1948
			120	817–888	December	3 August 1948***	3 August 1948
1948	12	1	1	1–72	January	27 August 1948***	28 August 1948
			2	73–144	February	17 September 1948***	18 September 1948
			3	145–224	March	1 October 1948***	4 October 1948
			4	225–296	April	29 October 1948***	2 November 1948
			5	297–376	May	8 December 1948***	13 December 1948
			6	377–448	June	31 December 1948***	3 January 1949
			7	449–528	July	14 January 1949***	14 January 1949
			8	529–604	August	14 January 1949***	14 January 1949
			9	605–684	September	4 February 1949***	7 February 1949
			10	685–764	October	4 February 1949***	7 February 1949
			11	765–836	November	11 March 1949***	14 March 1949
			12	837–916	December	28 March 1949***	30 March 1949
1949	12	2	13	1–80	January	26 April 1949***	27 April 1949
			14	81–160	February	17 June 1949***	18 June 1949
			15	161–240	March	22 June 1949***	23 June 1949
			16	241–320	April	15 July 1949***	18 July 1949
			17	321–400	May	19 August 1949***	20 August 1949
			18	401–480	June	29 August 1949***	31 August 1949
			19	481–560	July	9 September 1949***	12 September 1949
			20	561–640	August	7 October 1949***	8 October 1949
			21	641–726	September	26 October 1949***	27 October 1949
			22	727–810	October	4 November 1949***	5 November 1949
			23	811–894	November	11 November 1949***	15 November 1949

.....continued on the next page

TABLE 2 (continued)

Year	Series	Vol.	Part	Pages	Printed month	Date of publication	Other Date*
1949	12	2	24	895–969	December	14 December 1949***	16 December 1949
1950	12	3	25	1–88	January	1 January 1950	2 January 1950
			26	89–176	February	1 February 1950	3 February 1950
			27	177–268	March	1 March 1950	1 March 1950
			28	269–364	April	1 April 1950	1 April 1950
			29	365–452	May	1 May 1950	1 May 1950
			30	453–552	June	1 June 1950	1 June 1950
			31	553–640	July	1 July 1950	4 July 1950
			32	641–724	August	1 August 1950	3 August 1950
			33	725–812	September	1 September 1950	4 September 1950
			34	813–904	October	1 October 1950	3 October 1950
			35	905–1000	November	1 November 1950	2 November 1950
			36	1001–1096	December	1 December 1950	4 December 1950
1951	12	4	37	1–96	January	1 January 1951	1 January 1951
			38	97–192	February	1 February 1951	1 February 1951
			39	193–304	March	1 March 1951	1 March 1951
			40	305–416	April	1 April 1951	4 April 1951
			41	417–528	May	1 May 1951	3 May 1951
			42	529–624	June	1 June 1951	7 June 1951
			43	625–728	July	1 July 1951	4 July 1951
			44	729–832	August	1 August 1951	1 August 1951
			45	833–944	September	1 September 1951	5 September 1951
			46	945–1056	October	1 October 1951	5 October 1951
			47	1057–1168	November	1 November 1951	6 November 1951
			48	1169–1287	December	1 December 1951	3 December 1951
1952	12	5	49	1–104	January	1 January 1952	9 January 1952
			50	105–208	February	1 February 1952	1 February 1952
			51	209–312	March	1 March 1952	15 March 1952
			52	313–416	April	1 April 1952	7 April 1952
			53	417–520	May	1 May 1952	7 May 1952
			54	521–628	June	1 June 1952	12 June 1952
			55	629–716	July	1 July 1952	8 July 1952
			56	717–796	August	1 August 1952	13 August 1952
			57	797–876	September	1 September 1952	4 September 1952
			58	877–956	October	1 October 1952	3 October 1952
			59	957–1038	November	1 November 1952	1 November 1952
			60	1039–1116	December	29 November 1952*	

.....continued on the next page

TABLE 2 (continued)

Year	Series	Vol.	Part	Pages	Printed month	Date of publication	Other Date*
1953	12	6	61	1–80	January	1 January 1953	3 January 1953
			62	81–160	February	1 February 1953	4 February 1953
			63	161–240	March	1 March 1953	6 March 1953
			64	241–320	April	1 April 1953	7 April 1953
			65	321–400	May	1 May 1953	12 May 1953
			66	401–480	June	1 June 1953	12 June 1953
			67	481–560	July	1 July 1953	6 July 1953
			68	561–640	August	1 August 1953	7 August 1953
			69	641–720	September	1 September 1953	1 September 1953
			70	721–800	October	1 October 1953	17 October 1953
			71	801–880	November	1 November 1953	9 November 1953
			72	881–960	December	1 December 1953	4 December 1953
1954	12	7	73	1–80	January	1 January 1954	8 January 1954
			74	81–160	February	30 January 1954*	
			75	161–240	March	1 March 1954	1 March 1954
			76	241–320	April	<i>17 April 1954*</i>	
			77	321–400	May	<i>22 May 1954*</i>	
			78	401–480	June	<i>18 June 1954*</i>	
			79	481–560	July	<i>22 July 1954*</i>	
			80	561–640	August	<i>16 August 1954</i>	
			81	641–720	September	<i>24 September 1954*</i>	
			82	721–796	October	<i>21 October 1954*</i>	
			83	797–876	November	<i>25 November 1954*</i>	
			84	877–954	December	<i>20 January 1955*</i>	
1955	12	8	85	1–80	January	<i>21 January 1955*</i>	
			86	81–160	February	<i>14 May 1955*</i>	
			87	161–240	March	<i>4 July 1955*</i>	
			88	241–320	April	<i>22 August 1955*</i>	
			89	321–400	May	<i>30 August 1955*</i>	
			90	401–480	June	<i>27 September 1955*</i>	
			91	481–560	July	<i>28 October 1955*</i>	
			92	561–640	August	<i>19 November 1955*</i>	
			93	641–720	September	<i>5 January 1956*</i>	
			94	721–800	October	<i>24 January 1956*</i>	
			95	801–880	November	<i>10 February 1956*</i>	
			96	881–950	December	<i>18 February 1956*</i>	
1956	12	9	97	1–80	January	<i>30 June 1956*</i>	
			98	81–144	February	<i>19 July 1956*</i>	

.....continued on the next page

TABLE 2 (continued)

Year	Series	Vol.	Part	Pages	Printed month	Date of publication	Other Date*
1956	12	9	99	145–224	March	25 September 1956*	
			100	225–304	April	17 October 1956*	
			101	305–384	May	2 November 1956*	
			102	385–464	June	23 November 1956*	
			103	465–544	July	7 December 1956*	
			104	545–624	August	18 December 1956*	
			105	625–704	September	15 January 1957***	17 January 1957
			106	705–784	October	28 January 1957***	31 January 1957
			107	785–864	November	5 February 1957***	6 February 1957
			108	865–936	December	22 March 1957***	28 March 1957
1957	12	10	109	1–80	January	16 May 1957***	
			110	81–160	February	31 May 1957***	
			111	161–240	March	27 June 1957***	
			112	241–320	April	19 August 1957***	
			113	321–400	May	20 September 1957***	
			114	401–480	June	18 October 1957***	
			115	481–560	July	29 October 1957***	
			116	561–624	August	13 November 1957***	20 November 1957
			117	625–703	September	13 January 1958***	22 January 1958
			118	705–784	October	7 February 1958***	11 February 1958
			119	785–864	November	23 April 1958***	25 April 1958
			120	865–936	December	4 June 1958***	25 June 1958
1958	13	1	1	1–80	January	27 June 1958***	30 June 1958
			2	81–160	February	17 September 1958***	24 September 1958
			3	161–240	March	16 October 1958***	27 October 1958
			4	241–304	April	27 October 1958***	28 October 1958
			5	305–368	May	12 November 1958***	18 November 1958
			6	369–432	June	26 November 1958***	10 December 1958
			7	433–496	July	28 November 1958***	10 December 1958
			8	497–560	August	18 December 1958***	29 December 1958
			9	561–624	September	31 December 1958***	7 January 1959
			10	625–688	October	23 January 1959***	2 February 1959
			11	689–752	November	6 March 1959***	17 March 1959
			12	753–817	December	22 September 1959***	29 September 1959
1959	13	2	13	1–64	January	4 November 1959***	23 November 1959
			14	65–128	February	31 December 1959***	1 January 1960
			15	129–192	March	12 January 1960***	13 January 1960
			16	193–256	April	15 February 1960***	18 February 1960

.....continued on the next page

TABLE 2 (continued)

Year	Series	Vol.	Part	Pages	Printed month	Date of publication	Other Date*
1959	13	2	17	257–320	May	15 March 1960***	21 March 1960
			18	321–384	June	18 May 1960***	31 May 1960
			19	385–448	July	7 June 1960***	16 June 1960
			20	449–512	August	11 August 1960***	15 August 1960
			21	513–576	September	6 September 1960***	14 September 1960
			22	577–640	October	21 October 1960***	21 October 1960
			23	641–704	November	11 November 1960***	14 November 1960
			24	705–760	December	25 November 1960***	29 November 1960
1960	13	3	25	1–102	January	9 December 1960***	
			26	103–132	February	21 December 1960***	
			27	133–210	March	30 December 1960***	
			28	211–308	April	30 December 1960***	
			29	309–336	May	20 January 1961***	
			30	337–406	June	30 January 1961***	
			31	407–496	July	14 February 1961***	
			32	497–570	August	28 February 1961***	28 February 1961
			33	571–592	September	14 March 1961***	20 March 1961
			34	593–656	October	6 April 1961***	24 April 1961
			35	657–704	November	8 May 1961***	24 May 1961
			36	705–759	December	27 June 1961***	30 June 1961
1961	13	4	37	1–64	January	19 July 1961***	31 July 1961
			38	65–128	February	11 August 1961***	14 August 1961
			39	129–192	March	5 September 1961***	19 September 1961
			40	193–256	April	3 October 1961***	9 October 1961
			41	257–320	May	6 November 1961***	23 November 1961
			42	321–384	June	7 December 1961***	14 December 1961
			43	385–448	July	29 December 1961***	3 January 1962
			44	449–512	August	18 January 1962***	19 January 1962
			45	513–576	September	15 February 1962***	16 February 1962
			46	577–640	October	26 March 1962***	29 March 1962
			47	641–704	November	22 May 1962***	28 May 1962
			48	705–759	December	14 June 1962***	15 June 1962
1962	13	5	49	1–63	January	28 June 1962***	
			50	65–127	February	27 July 1962***	
			51	129–191	March	18 October 1962***	
			52	193–256	April	1 November 1962***	
			53	257–320	May	15 November 1962***	

.....continued on the next page

TABLE 2 (continued)

Year	Series	Vol.	Part	Pages	Printed month	Date of publication	Other Date*
1962	13	5	54	321–383	June	22 November 1962***	
			55	385–447	July	9 January 1963***	27 February 1963
			56	449–512	August	14 March 1963***	22 March 1963
			57	513–576	September	18 April 1963***	19 April 1963
			58	577–640	October	29 May 1963***	10 June 1963
			59	641–704	November	4 July 1963***	8 July 1963
			60	705–760	December	9 September 1963***	10 September 1963
1963	13	6	61	1–64	January	9 October 1963***	17 October 1963
			62	65–144	February	29 October 1963***	4 November 1963
			63	145–191	March	22 November 1963***	22 November 1963
			64	193–255	April	3 December 1963***	12 December 1963
			65	257–320	May	16 January 1964***	31 January 1964
			66	321–383	June	25 February 1964***	25 February 1964
			67	385–447	July	18 March 1964***	23 March 1964
			68	449–512	August	17 May 1964***	8 June 1964
			69	513–576	September	17 June 1964***	22 June 1964
			70	577–639	October	31 July 1964***	4 August 1964
			71	640–704	November	21 August 1964***	24 August 1964
			72	705–772	December	15 October 1964	23 October 1964
1964	13	7	73	1–63	January	29 October 1964***	10 November 1964
			74	65–127	February	12 November 1964***	13 November 1964
			75	129–192	March	10 December 1964***	22 December 1964
			76	193–255	April	21 January 1965***	28 January 1965
			77	257–319	May	11 March 1965***	16 March 1965
			78	321–384	June	27 April 1965***	4 May 1965
			79	385–447	July	15 June 1965***	21 June 1965
			80	449–511	August	22 July 1965***	26 July 1965
			81	513–575	September	1 September 1965***	6 September 1965
			82	577–640	October	30 September 1965***	1 October 1965
			83	641–703	November	19 October 1965***	21 October 1965
			84	705–772	December	14 December 1965***	17 December 1965
1965	13	8	85–86	1–128	Jan.–Feb.	31 December 1965***	4 January 1966
			87–88	129–255	Mar.–Apr.	20 January 1966***	26 January 1966
			89–90	257–384	May–Jun.	8 March 1966***	24 March 1966
			91–92	385–512	Jul.–Aug.	28 April 1966***	29 April 1966
			93–94	513–612	Sept.–Oct	1 June 1966***	3 June 1966
			95–96	613–712	Nov.–Dec.	6 July 1966***	8 July 1966

.....continued on the next page

TABLE 2 (continued)

Year	Series	Vol.	Part	Pages	Printed month	Date of publication	Other Date*
1966	13	9	97–99	1–160	Jan.–March	1 September 1966***	16 September 1966
			100–102	161–320	April–June	29 September 1966***	4 October 1966
			103–105	321–480	July–Sept.	29 November 1966***	2 December 1966
			106–108	481–696	Oct.–Dec.	15 March 1967*	

Journal of Natural History

Year	Vol.	Part	Pages	Printed date	Date of publication	Other Date/Notes*
1967	1	1	1–152	Jan/Mar	12 April 1967†	
		2	153–304	Apr/Jun	28 June 1967†	
		3	305–456	Jul/Sep	18 August 1967†	
		4	457–608	Oct/Dec	3 November 1967†	
1968	2	1	1–154	Jan/Mar	29 December 1967†	
		2	155–306	Apr/Jun	1 April 1968†	
		3	307–457	Jul/Sep	1 July 1968†	
		4	459–608	Oct/Dec	1 October 1968†	
1969	3	1	1–152	Jan/Mar	20 January 1969†	
		2	153–304	Apr/Jun	17 April 1969†	
		3	305–460	Jul/Sep	18 July 1969†	
		4	461–608	Oct/Dec	1 October 1969†	
1970	4	1	1–152	Jan/Mar	1 January 1970†	
		2	153–304	Apr/Jun	10 April 1970†	
		3	305–456	Jul/Sep	8 July 1970†	
		4	457–604	Oct/Dec	1 October 1970†	
1971	5	1	1–120	Jan/Feb	1 January 1971†	
		2	12–240	Mar/Apr	1 March 1971†	
		3	241–359	May/Jun	1 May 1971†	
		4	361–479	Jul/Aug	1 July 1971†	
		5	481–599	Sep/Oct	1 September 1971†	
		6	601–724	Nov/Dec	1 November 1971†	
1972	6	1	1–120	Jan/Feb	7 January 1972†	
		2	12–246	Mar/Apr	24 March 1972†	
		3	247–362	May/Jun	23 May 1972*	
		4	363–481	Jul/Aug	3 July 1972†	
		5	483–601	Sep/Oct	14 September 1972†	
		6	603–726	Nov/Dec	18 October 1972†	

.....continued on the next page

TABLE 2 (continued)

Year	Series	Vol.	Part	Pages	Printed month	Date of publication	Other Date*
1973	7		1	1–119	Jan/Feb	1 January 1973†	
			2	121–240	Mar/Apr	13 February 1973†	
			3	241–360	May/Jun	12 July 1973†	
			4	361–480	Jul/Aug	16 August 1973†	
			5	481–600	Sep/Oct	27 November 1973†	
			6	601–724	Nov/Dec	12 December 1973†	
1974	8		1	1–120	Jan/Feb	7 January 1974†	
			2	121–240	Mar/Apr	20 February 1974†	
			3	241–348	May/Jun	8 July 1974†	
			4	349–480	Jul/Aug	31 July 1974†	
			5	481–603	Sep/Oct	5 September 1974†	
			6	605–728	Nov/Dec	18 October 1974†	
1975	9		1	1–119	Jan/Feb	1 January 1975†	
			2	121–239	Mar/Apr	3 March 1975†	
			3	241–359	May/Jun	1 May 1975†	
			4	361–480	Jul/Aug	1 July 1975†	
			5	481–600	Sep/Oct	1 September 1975†	
			6	601–724	Nov/Dec	1 November 1975†	
1976	10		1	1–120	Jan/Feb	14 January 1976†	
			2	121–240	Mar/Apr	15 March 1976†	16 March 1976
			3	241–360	May/Jun	3 May 1976†	
			4	361–479	Jul/Aug	1 July 1976	
			5	481–598	Sep/Oct	21 September 1976†	
			6	599–723	Nov/Dec	1 November 1976†	
1977	11		1	1–120	Jan/Feb	26 January 1977†	
			2	121–240	Mar/Apr	7 March 1977†	
			3	241–360	May/Jun	1 May 1977†	
			4	361–476	Jul/Aug	1 July 1977†	
			5	477–596	Sep/Oct	1 September 1977†	
			6	597–724	Nov/Dec	27 October 1977*	
1978	12		1	1–120	Jan/Feb	6 February 1978†††	
			2	121–240	Mar/Apr	28 April 1978†††	
			3	241–360	May/Jun	7 June 1978†††	
			4	361–480	Jul/Aug	24 July 1978†††	
			5	481–600	Sep/Oct	29 August 1978†††	

.....continued on the next page

TABLE 2 (continued)

Year	Series	Vol.	Part	Pages	Printed month	Date of publication	Other Date*
1978		12	6	601–723	Nov/Dec	16 November 1978†††	
1979	13	1	1–128	Jan/Feb	23 January 1979†††		
		2	129–262	Mar/Apr	30 March 1979†††	11 April 1979	
		3	263–398	May/Jun	10 September 1979†††	13 September 1979	
		4	399–533	Jul/Aug	24 October 1979†††	25 October 1979	
		5	535–660	Sep/Oct	27 December 1979†††	31 December 1979	
		6	661–804	Nov/Dec	7 January 1980†††	8 January 1980	
1980	14	1	1–152	Jan/Feb	6 March 1980	Dated from 25(1)	
		2	153–308	Mar/Apr	22 May 1980	“	
		3	309–452	May/Jun	30 May 1980	“	
		4	453–605	Jul/Aug	8 August 1980	“	
		5	607–749	Sep/Oct	26 August 1980	“	
		6	751–902	Nov/Dec	22 October 1980	“	
1981	15	1	1–182	Jan/Feb	9 January 1981	“	
		2	183–364	Mar/Apr	6 February 1981	“	
		3	365–544	May/Jun	24 March 1981	“	
		4	545–726	Jul/Aug	13 May 1981	“	
		5	727–907	Sep/Oct	26 August 1981	“	
		6	909–1085	Nov/Dec	26 November 1981	“	
1982	16	1	1–164	Jan/Feb	10 February 1982	“	
		2	165–304	Mar/Apr	15 April 1982	“	
		3	305–465	May/Jun	26 May 1982	“	
		4	467–632	Jul/Aug	31 August 1982	“	
		5	633–789	Sep/Oct	30 September 1982	“	
		6	791–916	Nov/Dec	14 December 1982	“	
1983	17	1	1–126	Jan/Feb	27 January 1983	“	
		2	127–246	Mar/Apr	24 March 1983	“	
		3	247–487	May/Jun	19 April 1983	“	
		4	489–662	Jul/Aug	1 June 1983	“	
		5	663–827	Sep/Oct	1 August 1983	“	
		6	829–996	Nov/Dec	15 October 1983	“	
1984	18	1	1–174	Jan/Feb	30 January 1984	Dated from 25(1)	
		2	175–334	Mar/Apr	1 March 1984	“	
		3	335–494	May/Jun	11 April 1984	“	

.....continued on the next page

TABLE 2 (continued)

Year	Series	Vol.	Part	Pages	Printed month	Date of publication	Other Date*
1984	18		4	495–663	Jul/Aug	13 June 1984	“
			5	665–828	Sep/Oct	17 September 1984	“
			6	829–983	Nov/Dec	<i>15 January 1985</i>	“
1985	19		1	1–204	Jan/Feb	21 March 1985	“
			2	205–418	Mar/Apr	23 May 1985	“
			3	419–621	May/Jun	3 June 1985	“
			4	623–829	Jul/Aug	5 July 1985	“
			5	831–1057	Sep/Oct	2 September 1985	“
			6	1059–1237	Nov/Dec	17 October 1985	“
1986	20		1	1–254	Jan/Feb	14 January 1986	“
			2	255–502	Mar/Apr	3 March 1986	“
			3	503–766	May/Jun	20 May 1986	“
			4	767–1040	Jul/Aug	25 July 1986	“
			5	1041–1281	Sep/Oct	30 September 1986	“
			6	1283–1502	Nov/Dec	1 December 1986	“
1987	21		1	1–273	Jan/Feb	30 January 1987	“
			2	275–534	Mar/Apr	25 February 1987	“
			3	535–806	May/Jun	1 May 1987	“
			4	807–1086	Jul/Aug	29 July 1987	“
			5	1087–1335	Sep/Oct	27 August 1987	“
			6	1337–1590	Nov/Dec	1 December 1987	“
1988	22		1	1–295	Jan/Feb	23 February 1988	“
			2	297–574	Mar/Apr	5 April 1988	“
			3	575–859	May/Jun	23 May 1988	“
			4	861–1138	Jul/Aug	30 August 1988	“
			5	1139–1446	Sep/Oct	12 October 1988	“
			6	1447–1714	Nov/Dec	<i>11 January 1989</i>	“
1989	23		1	1–284	Jan/Feb	28 February 1989	“
			2	285–490	Mar/Apr	14 April 1989	“
			3	491–723	May/Jun	14 June 1989	“
			4	725–975	Jul/Aug	3 July 1989	“
			5	977–1203	Sep/Oct	2 October 1989	“
			6	1205–1471	Nov/Dec	9 November 1989	“
1990	24		1	1–276	Jan/Feb	22 February 1990	“

.....continued on the next page

TABLE 2 (continued)

Year	Series	Vol.	Part	Pages	Printed month	Date of publication	Other Date*
1990	24		2	277–533	Mar/Apr	5 April 1990	“
			3	535–790	May/Jun	2 June 1990	“
			4	791–1078	Jul/Aug	1 August 1990	“
			5	1079–1338	Sep/Oct	31 August 1990	“
			6	1339–1640	Nov/Dec	19 October 1990	“
1991	25		1	1–268	Jan/Feb	28 December 1990	Dated from 27(1)
			2	269–536	Mar/Apr	19 April 1991	“
			3	537–821	May/Jun	31 July 1991	“
			4	823–1082	Jul/Aug	30 September 1991	“
			5	1083–1402	Sep/Oct	29 November 1991	“
			6	1403–1689	Nov/Dec	31 December 1991	“
1992	26		1	1–270	Jan/Feb	28 February 1992	Dated from 27(1)
			2	271–463	Mar/Apr	29 May 1992	“
			3	465–692	May/Jun	31 July 1992	“
			4	693–894	Jul/Aug	18 September 1992	“
			5	895–1119	Sep/Oct	30 October 1992	“
			6	1121–1442	Nov/Dec	<i>21 January 1993</i>	“
1993	27		1	1–254	Jan/Feb	26 February 1993	Dated from 28(1)
			2	255–508	Mar/Apr	30 April 1993	“
			3	509–722	May/Jun	28 June 1993	“
			4	723–988	Jul/Aug	15 September 1993	“
			5	989–1217	Sep/Oct	14 October 1993	“
			6	1219–1435	Nov/Dec	30 November 1993	“
1994	28		1	1–256	Jan/Feb	17 February 1994	Dated from 29(1)
			2	257–504	Mar/Apr	1 March 1994	“
			3	505–748	May/Jun	31 May 1994	“
			4	749–980	Jul/Aug	29 July 1994	“
			5	981–1212	Sep/Oct	22 September 1994	“
			6	1213–1427	Nov/Dec	16 November 1994	“
1995	29		1	1–269	Jan/Feb	22 February 1995††	
			2	271–562	Mar/Apr	9 March 1995††	
			3	563–841	May/Jun	31 May 1995††	
			4	843–1092	Jul/Aug	11 July 1995††	
			5	1093–1344	Sep/Oct	14 September 1995††	
			6	1345–1589	Nov/Dec	27 October 1995††	

.....continued on the next page

TABLE 2 (continued)

Year	Series	Vol.	Part	Pages	Printed month	Date of publication	Other Date*
1996	30		1	1–161	January	24 November 1995 ^{††}	
			2	163–316	February	23 February 1996 ^{††}	
			3	317–477	March	6 March 1996 ^{††}	
			4	479–636	April	2 April 1996 ^{††}	
			5	637–793	May	26 April 1996 ^{††}	
			6	795–953	June	12 June 1996 ^{††}	
			7	955–1109	July	5 July 1996 ^{††}	
			8	1111–1264	August	7 August 1996 ^{††}	
			9	1267–1423	September	28 August 1996 ^{††}	
			10	1425–1580	October	3 October 1996 ^{††}	
			11	1583–1740	November	16 October 1996 ^{††}	
			12	1741–1884	December	3 December 1996 ^{††}	
1997	31		1	1–156	January	3 January 1997	Dated from 32(5)
			2	157–314	February	16 January 1997	“
			3	315–488	March	28 February 1997	“
			4	489–662	April	10 March 1997	“
			5	663–839	May	10 March 1997	“
			6	941–996	June	30 May 1997	“
			7	997–1155	July	2 July 1997	“
			8	1157–1305	August	25 July 1997	“
			9	1307–1455	September	28 August 1997	“
			10	1457–1604	October	24 September 1997	“
			11	1605–1744	November	29 October 1997	“
			12	1745–1871	December	7 November 1997	“
1998	32		1	1–158	January	11 December 1997 ^{††}	
			2	159–315	February	3 February 1998 ^{††}	
			3	317–471	March	24 February 1998 ^{††}	
			4	473–627	April	25 March 1998 ^{††}	
			5	629–783	May	16 April 1998 ^{††}	
			6	785–941	June	13 May 1998 ^{††}	
			7	943–1100	July	11 June 1998 ^{††}	
			8	1101–1258	August	7 July 1998 ^{††}	
			9	1259–1414	September	15 July 1998 ^{††}	
			10/11	1415–1823	Oct/Nov	6 November 1998 ^{††}	
			12	1825–1975	December	20 November 1998 ^{††}	
1999	33		1	1–157	January	15 December 1998 ^{††}	
			2	159–316	February	4 February 1999 ^{††}	

.....continued on the next page

TABLE 2 (continued)

Year	Series	Vol.	Part	Pages	Printed month	Date of publication	Other Date*
1999	33		3	317–474	March	2 March 1999††	
			4	475–628	April	16 March 1999††	
			5	629–788	May	14 April 1999††	
			6	789–948	June	17 May 1999††	
			7	949–1105	July	14 June 1999††	
			8	1107–1259	August	25 June 1999††	
			9	1261–1422	September	19 August 1999††	
			10	1423–1579	October	8 September 1999††	
			11	1581–1737	November	21 October 1999††	
			12	1739–1882	December	22 November 1999††	
2000	34		1	1–158	January	7 December 1999††	
			2	159–315	February	9 December 1999††	
			3	317–478	March	25 February 2000††	
			4	479–640	April	29 March 2000††	
			5	641–797	May	13 April 2000††	
			6	799–956	June	9 May 2000††	
			7	957–1154	July	15 May 2000††	
			8	1155–1712	August	20 July 2000††	
			9	1713–1867	September	18 August 2000††	
			10	1869–2027	October	29 September 2000††	
			11	2029–2185	November	20 October 2000††	
			12	2187–2329	December	20 November 2000††	28 November 2000
2001	35		1	1–156	January	18 December 2000††	25 January 2001
			2	157–311	February	18 December 2000††	6
			3	313–469	March	28 February 2001††	15 March 2001
			4	471–625	April	30 March 2001††	18 April 2001
			5	627–786	May	11 May 2001††	24 May 2001
			6	787–944	June	31 May 2001††	21 June 2001
			7	945–1101	July	12 June 2001††	11 July 2001
			8	1103–1260	August	11 July 2001††	6
			9	1261–1416	September	27 July 2001††	13 August 2001
			10	1417–1574	October	10 October 2001††	18 October 2001
			11	1575–1732	November	19 October 2001††	1 November 2001
			12	1733–1879	December	8 November 2001††	22 November 2001
2002	36		1	1–125	15 January 2002	7 December 2001††	
			2	127–251	10 February 2002	12 December 2001††	
			3	253–378	20 February 2002	17 December 2001††	

.....continued on the next page

TABLE 2 (continued)

Year	Series	Vol.	Part	Pages	Printed month	Date of publication	Other Date*
2002	36		4	379–503	15 March 2002	28 February 2002 ††	
			5	505–629	10 April 2002	6 March 2002 ††	
			6	631–756	20 April 2002	8 April 2002 ††	
			7	757–882	15 May 2002	29 April 2002 ††	
			8	883–1008	10 June 2002	10 May 2002 ††	
			9	1009–1134	20 June 2002	23 May 2002 ††	
			10	1135–1260	15 July 2002	31 May 2002 ††	
			11	1261–1383	10 August 2002	14 June 2002 ††	
			12	1385–1508	20 August 2002	29 July 2002 ††	13 August 2002
			13	1509–1634	15 September 2002	4 September 2002 ††	10 September 2002
			14	1635–1760	10 October 2002	4 September 2002 ††	17 September 2002
			15	1761–1886	20 October 2002	26 September 2002 ††	4 October 2002
			16	1887–2012	15 November 2002	3 October 2002 ††	18 October 2002
			17	2013–2138	10 December 2002	1 November 2002 ††	11 November 2002
			18	2139–2273	20 December 2002	11 November 2002 ††	
2003	37		1	1–125	10 January 2003	11 November 2002 ††	28 January 2003
			2	127–252	15 January 2003	11 November 2002 ††	5 February 2003
			3	253–377	10 February 2003	11 November 2002 ††	5 February 2003
			4	379–504	20 February 2003	11 November 2002 ††	5 February 2003
			5	505–646	10 March 2003	3 March 2003 ††	
			6	647–778	20 March 2003	31 March 2003††	
			7	779–902	10 April 2003	31 March 2003 ††	
			8	903–1028	20 April 2003	31 March 2003 ††	
			9	1029–1154	10 May 2003	24 April 2003 ††	
			10	1155–1280	20 May 2003	15 May 2003 ††	
			11	1281–1410	10 June 2003	19 May 2003 ††	
			12	1411–1534	20 June 2003	30 May 2003 ††	
			13	1535–1653	10 July 2003	11 June 2003 ††	
			14	1655–1779	20 July 2003	11 June 2003 ††	
			15	1781–1913	10 August 2003	11 June 2003 ††	
			16	1915–2032	20 August 2003	11 June 2003 ††	
			17	2033–2149	10 September 2003	11 June 2003 ††	
			18	2151–2267	20 September 2003	11 June 2003 ††	
			19	2269–2394	10 October 2002	11 June 2003 ††††	
			20	2395–2519	20 October 2002	7 August 2003 ††	19 August 2003
			21	2521–2646	10 November 2002	30 October 2003 ††	
			22	2647–2772	20 November 2002	30 October 2003 ††	
			23	2773–2884	10 December 2002	30 October 2003 ††	
			24	2885–2968	20 December 2002	30 October 2003 ††	

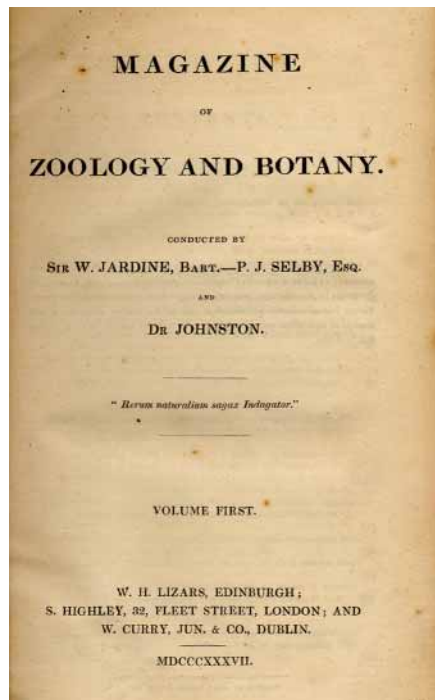
Dates in **boldface** are earlier than the printed dates of publication
Dates in *italics* are later than the year printed

ZOOTAXA

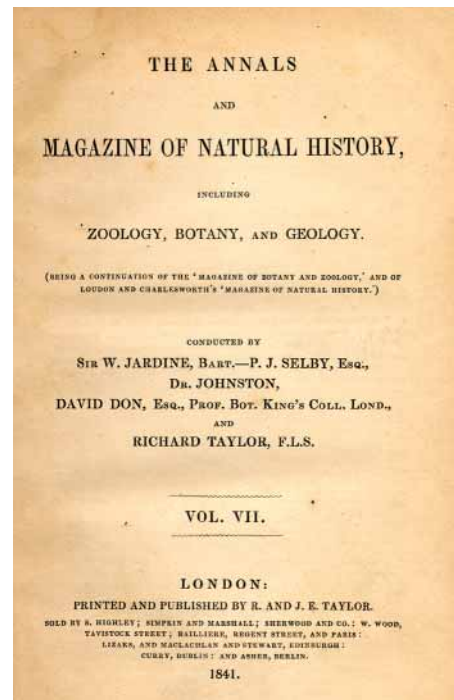
385

- * Date of receipt at BMNH libraries unless otherwise indicated
- ** Dating from Mathews (1925)
- *** Actual date of publication printed on wrapper
- Date of publication printed on back cover of issue
- Dated from information supplied by the publisher
- Dated from receipt at the British Library.

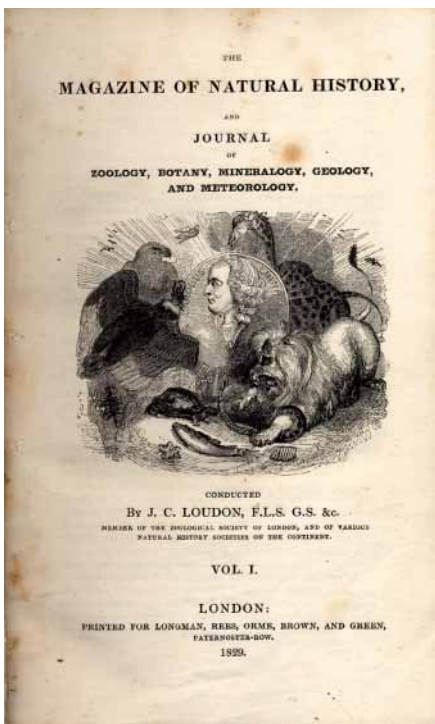
1



2



3



4

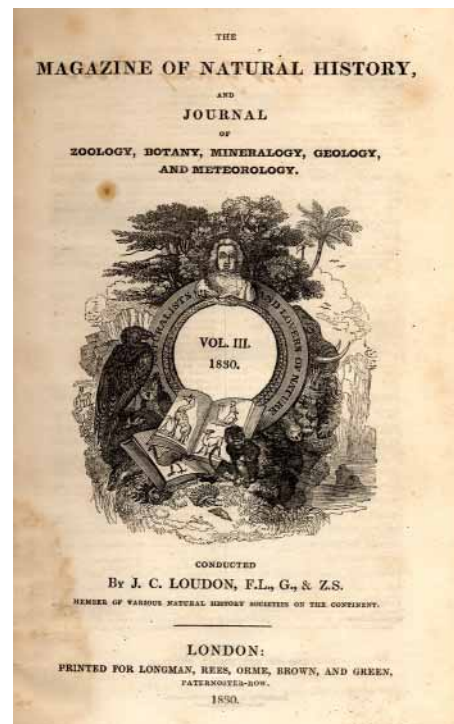
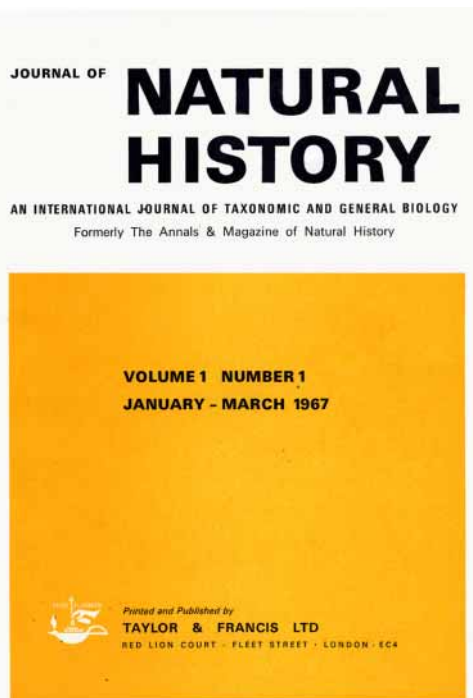


FIGURE 1–4. The title page of: 1. the first volume of the *Magazine of Zoology and Botany*; 2. the first volume of the *Annals and Magazine of Natural History*; 3. the first volume of Loudon's *Magazine of Natural History* showing original graphic design; 4. volume 3 of Loudon's *Magazine of Natural History* showing the change in graphic design.

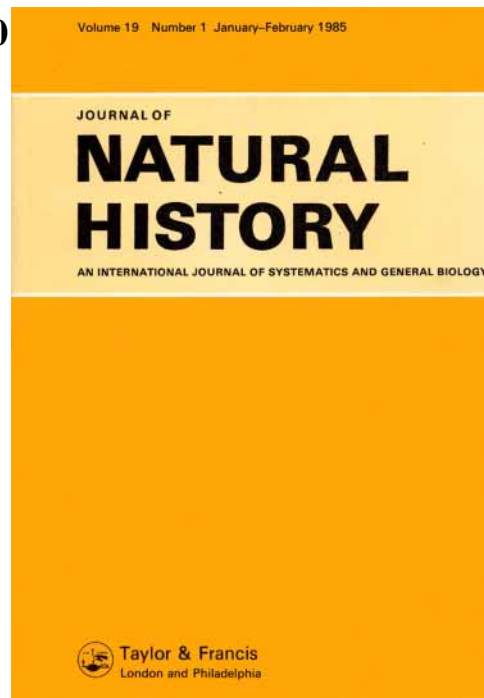


FIGURES 5–8. 5. An early (1858) blue wrapper of the *Annals and Magazine of Natural History* showing list of conductors (= editors) of the volume, and general contents; 6. Blue wrapper of a typical “Supplementary Number” of the *Annals and Magazine of Natural History* that often accompanied early volumes of the journal; 7. First change in design (1952) of the *Annals and Magazine of Natural History* since its inception in 1841; 8. Cover of the September 1952 issue of the *Annals and Magazine of Natural History* after its inclusion of the “Journal of Botany”.

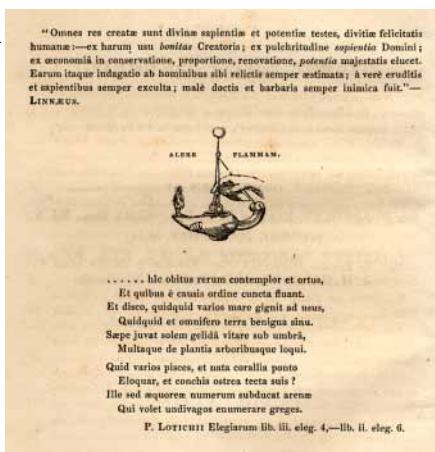
9



10



11



12

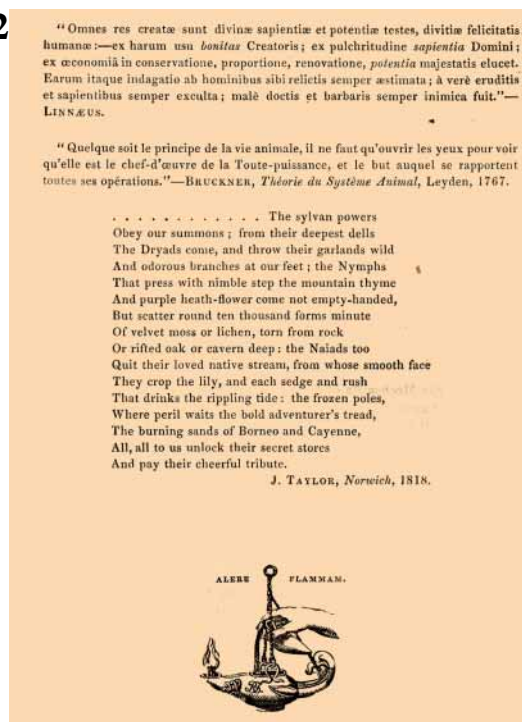


FIGURE 9–12. 9. Cover of volume 1 of the *Journal of Natural History*; 10. Cover of volume 19 of the *Journal of Natural History* showing change to all yellow cover; 11. Early quotations in the prefatory pages of *Annals and Magazine of Natural History*; 12. Typical quotation trio found in the *Annals and Magazine of Natural History* until its cessation in 1967.