

JALDAPARA IN PHOTOGRAPHS

PRAJARNI WILDLIFERS

■ Prabal Bera ■ Jayeta Bose Bera
■ Mayuree Roy



PRAJARNI WILDLIFERS

Jaldapara National Park situated in Alipur Duar district of West Bengal , at the foothills of the Eastern Himalayas and on the banks of the Torsa River. Main attractions of Jaldapara are Indian Elephants , Asiatic one horned Rhinoceros , four species of Deer : the Chital, the Hog deer, the Sambar and the Barking deer , Gaur (Indian Bison) , Wild Boars , Leopard , Jungle cat, Leopard cat and Fishing cat , Common Otter, the small and large Civet, Giant and Hoary Bellied Himalayan squirrel, Hispid hare , geckos , lizards , Rock Python and other herpetetic fauna and different varieties of birds like Pea cocks, Hornbills ,Owls, Nightjars, Crested serpent Eagle, Pallas's Fishing Eagle, Pied Harrier, Common Buzzard, Kestrel, Sparrow Hawk, Bee-eaters, Roller, Shrikes, Larks, Hill Mynas, Pipits, Kingfishers, Bulbuls, Finches, Red Jungle Fowl, Black partridge, Shaheen Falcon , Storks, Darter, Egret, Pond Herons and others. Tigers, though reside in the park in few numbers , are extremely rarely sighted.

Nearest AIRPORT : Bagdogra

Nearby Railway Stations :

Madarihat • Hasimara • New Jalpaiguri • Alipurduar Junction

TRANSPORT : Taxis are readily available from all the railway stations and the airport for direct transfer to Jaldapara National Park . Taxis for local sightseeings are also available from the local tour operators . Advance booking are always recommended .

ACCOMODATIONS :

Government and Private accommodations : Hollong Tourist Lodge , Jaldapara Tourist Lodge, Malangi Lodge , Mendabari Jungle Camp, Jaldapara Jungle Camp , Jaldapara Rhino Inn , Heaven Inn Jaldapara , Pagoda Resort Jaldapara , Relax Lodge - Madarihat, Tithi Lodge - Madarihat , Chilapata Greens - Mendabari , Bamboo Village Resort - Mendabari and few other private resorts including home stays .

ACTIVITIES IN AND AROUND JALDAPARA NATIONAL PARK

- 1) **FOREST SAFARIS :** Elephant back safari organised by the forest department both at Jaldapara and Chilapata . Jeep safaris into the national park are also available (4 times a day) along with folk dance from both Jaldapara and Chilapata. Tickets are only available on spot at designated ticket counters at definite times.
- 2) **SOUTH KHAIRBARI LEOPARD AND TIGER REHABILITATION CENTRE**
- 3) **KUNJANAGAR ECO PARK**
- 4) **TOTOPARA VILLAGE AND MAKRAPARA KALIMANDIR**
- 5) **BHUTAN BORDER AND PHUENTSHOLING IN BHUTAN .**

THE IMAGES USED ARE COPYRIGHTED BY TEAM PRAJARNI WILDLIFERS, ATTEMPT TO COPY BY ANY MEANS CAN LEAD TO COPYRIGHT INFRINGEMENT

ROAMING IN PAIRS



NEIGHBOUR'S ENVY, MOTHER'S PRIDE



THE DANCING PEACOCK



THE HEARD OF GAURS



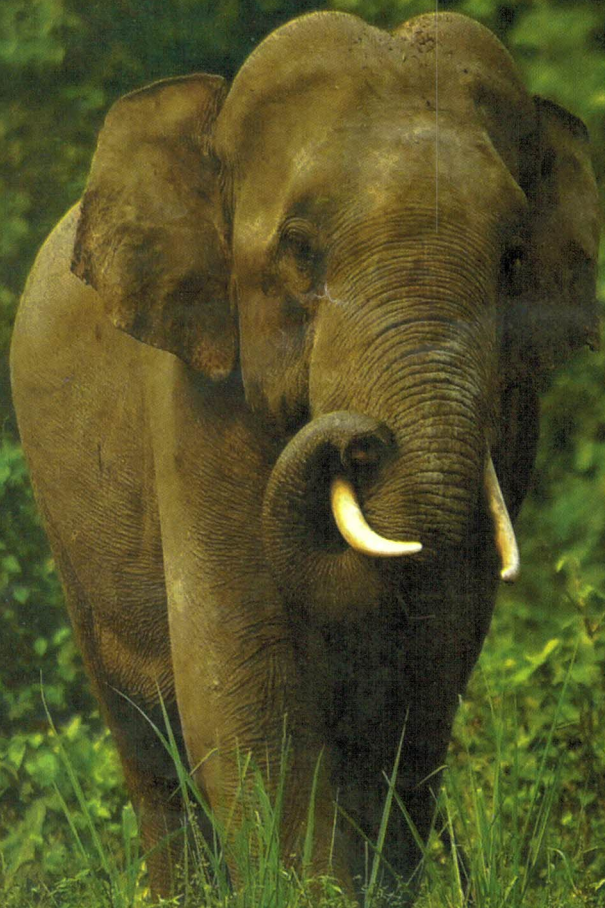
THE GATHERING OF THE GIANTS



THE SWIMMING RHINO



THE ELEGANT PRINCE



PRAJARNI WILDLIFERS

THE MAJESTY IN MOTION



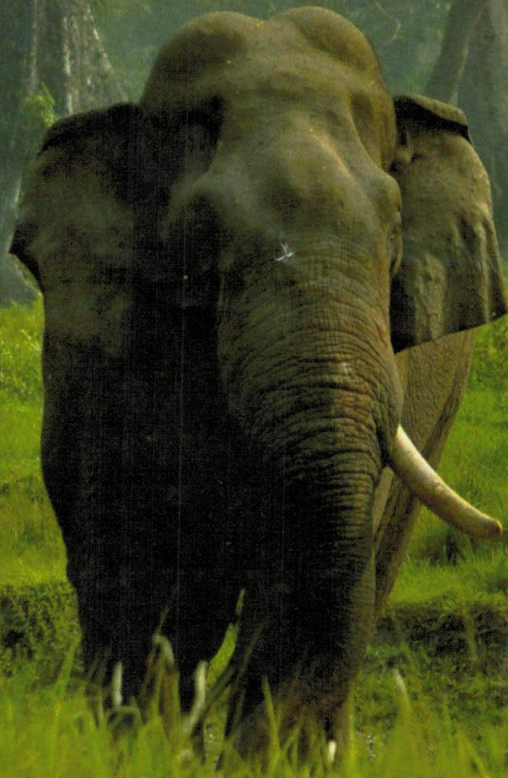
PRAJARNI WILDLIFERS

THE ROYAL STAG

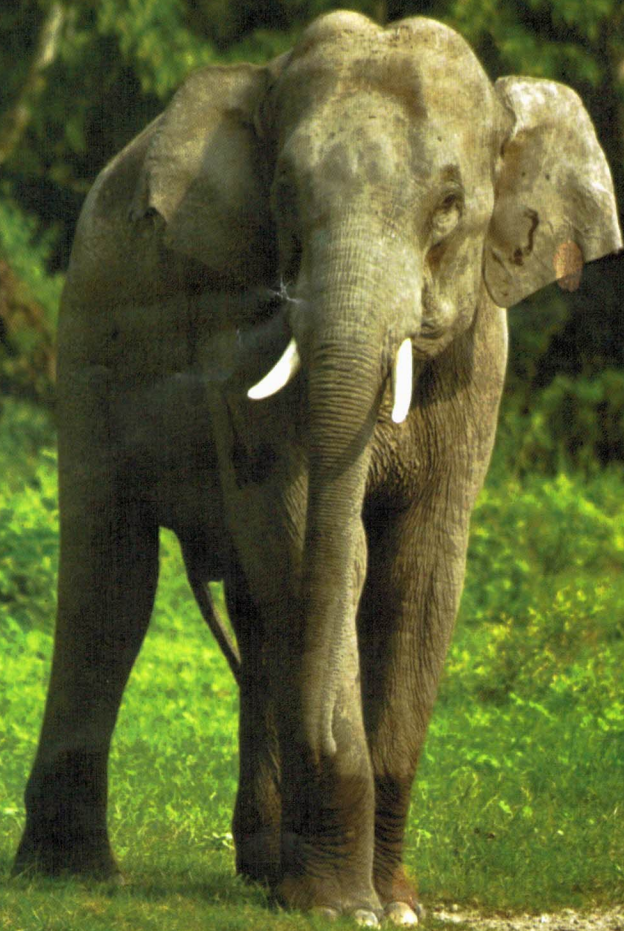


PRAJARNI WILDLIFERS

THE LEGEND OF JALDAPARA



THE RISING STAR



PRAJARNI WILDLIFERS

THE TWIN TUSKERS



PRAJARNI WILDLIFERS

THE SAMBAR DEER



PRAJARNI WILDLIFERS

GAUR CROSSING THE STREAM



PRAJARNI WILDLIFERS

LEOPARD HIDING



PRAJARNI WILDLIFERS

SMELLING THE AIR

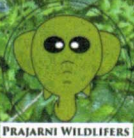


PRAJARNI WILDLIFERS

THE THIRSTY RHINO



THE BARKING DEER



THE ELEPHANT HERD

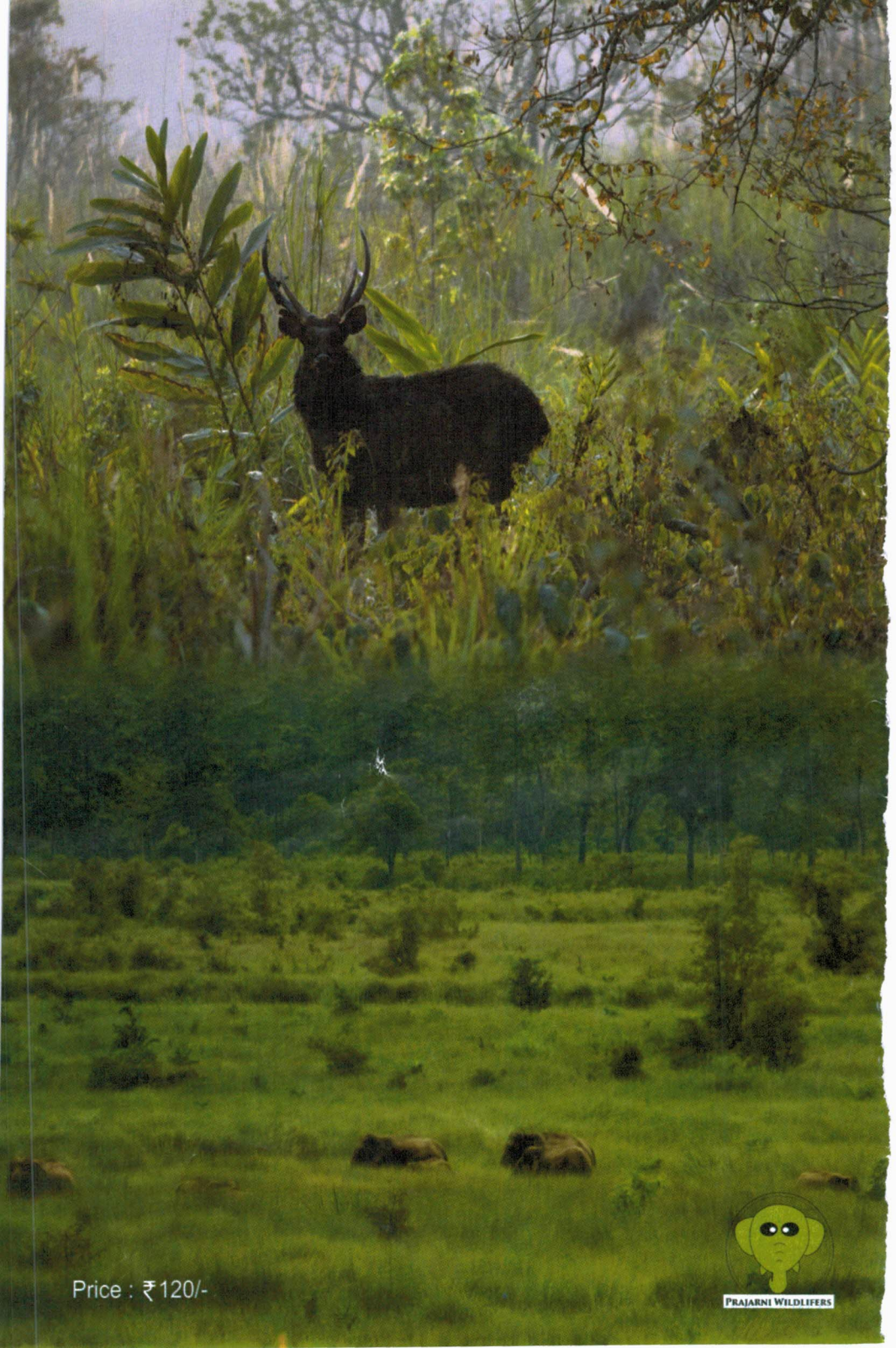


PRAJARNI WILDLIFERS

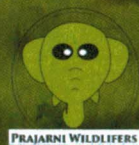
ORIENTAL PIED HORNBILL



PRAJARNI WILDLIFERS



Price : ₹ 120/-



PRAJARNI WILDLIFERS