

Some Familiar Friends at



Stereoscopic Co.

FROM THE PARROT-HOUSE.

A macaw with gorgeous plumage of orange and green.



L. Temple.

THE CRAB-EATING RACCOON.

A native of South America, presented to the Society in 1901.



L. Temple.

FROM THE ROCKIES.

A grizzly bear, presented by E. S. Cameron, Esq., F.Z.S.



L. Temple.

THE SPOTTED HYENA.

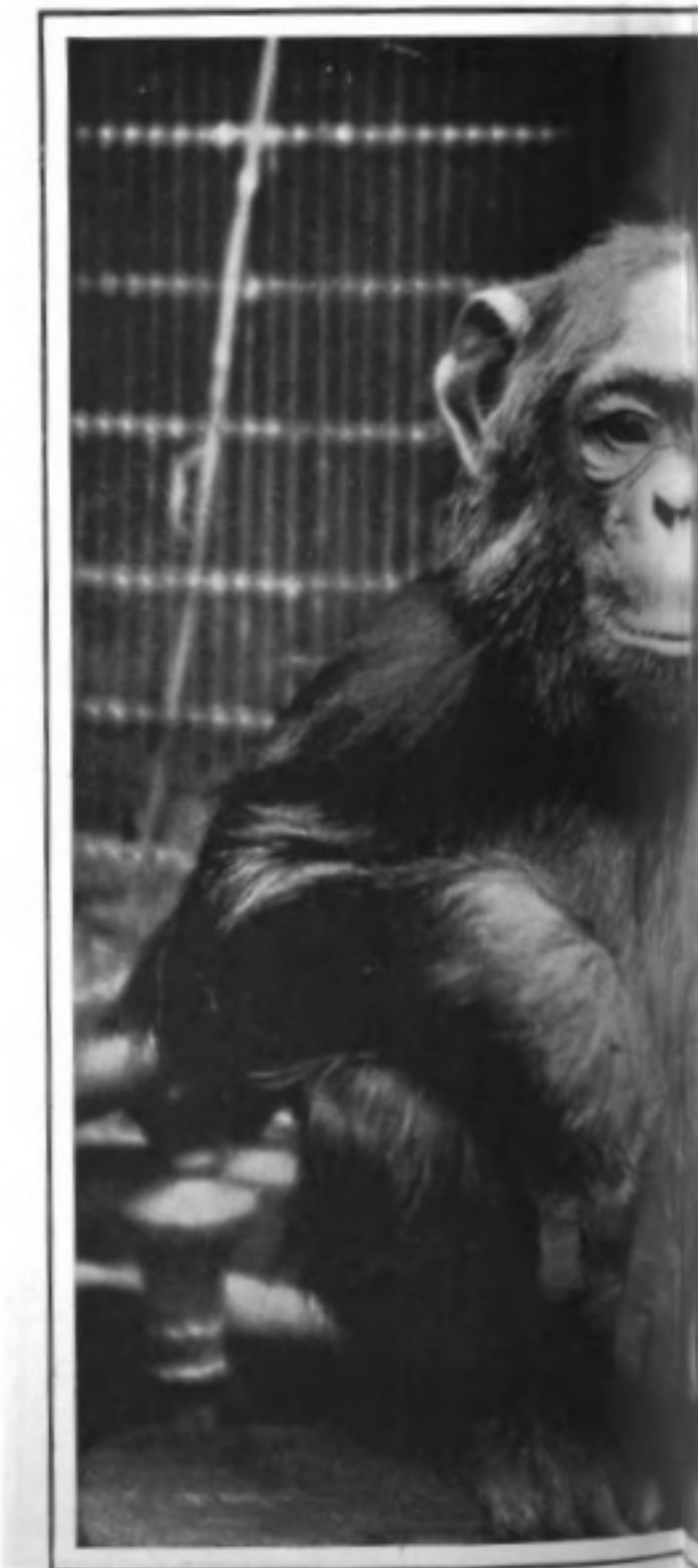
Brought from Gambia, and presented by Captain Sir G. C. Denton, K.C.M.G., F.Z.S., in 1902.



Stereoscopic Co.

THE POLAR BEAR.

Presented by Arnold Pike, Esq., in 1895, and brought from Spitzbergen.



A FAMILIAR

"Mikey," the chimpanzee, regarded by many visitors as a favorite by the Society.

the Zoological Gardens. =



THE CHILDREN'S DELIGHT.

"Punch," the Russian brown bear, who is always hungry.



THE GREAT KANGAROO.

Presented to the Society on May 30, 1900.



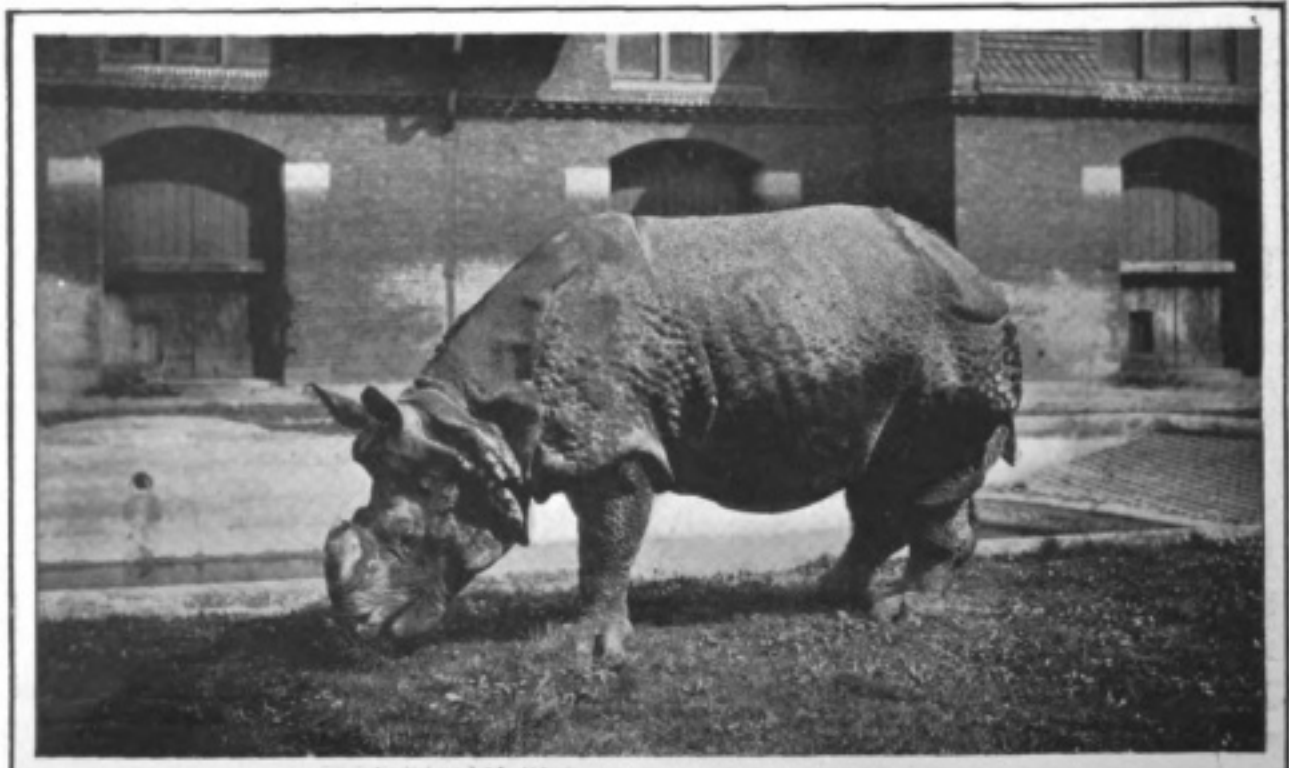
AN EAGLE.

These birds have very keen sight and great wing power.



"MINNIE."

This splendid tigress was presented by the Maharana of Oodeypore in 1892.



THE INDIAN RHINOCEROS.

"Tom," presented by H.H. Maharajah of Cooch Behar in 1886.