

December 30, 1939

WHEN IS A CHARGE?

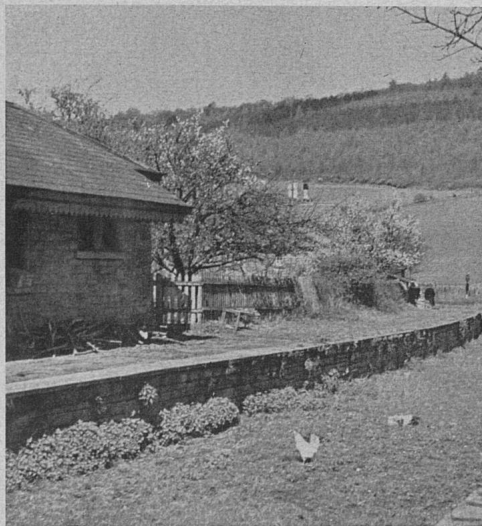
SIR.—I was much interested in the letter by “.577” “When is a Charge?” of September 23rd. I am sure he is correct as regards the general bearing of a beast which means mischief and intends to attack deliberately, but the novice will not always recognise the symptoms. I do not consider, however, that any animal, even a man-killing elephant, is really dangerous to approach within one thousand yards.

I do not think that he will deliberately stalk one or more human beings from even half that distance. But of course his exact whereabouts are generally uncertain!

As regards the question of a lead projectile. No white hunter in Africa ever uses any rifle except an H.V. Only a small amount of lead can be exposed in an H.V. projectile. Even then accuracy suffers. The hollow-capped bullet can be very deadly, but often fails unaccountably at both buck and carnivora.

Speaking with some experience, I would advise your younger readers, who hope to hunt dangerous game after the war, to provide themselves with a usual proportion of blunt-nosed solid cartridges for whatever rifle they may fancy.

The game scouts of Uganda and Tanganyika, who control the increase and depredations of all destructive game, are issued only with solid ammunition for the .404 Mauser rifles with which they are armed.



WITH THE SIGNAL ALWAYS SET AT
See letter “The Ghost Sto

I know that the results obtained by them are excellent in proportion to the rounds expended.

“.577” admits the necessity of the solid bullet against elephant and rhino. I would add buffalo most definitely to the list, and I have also found the solid bullet of the .318, the .404, and the .470 effective and consistent against lion and tiger.

Yours faithfully,

C. F. MARRIOTT.

Rift Valley Sports Club,
Nakuru,
Kenya.

