

# ARK*ive*

MT. KENYA:

100KM OF FENCE BUILT TO DATE



**ALSO IN  
THIS ISSUE**

**PAGE 4**

Eburu bird mapping project identifies 96 bird species

**PAGE 12**

Addressing human wildlife conflicts in the Imenti forest

**PAGE 17**

Feasibility study for fencing South Western Mau kicks off

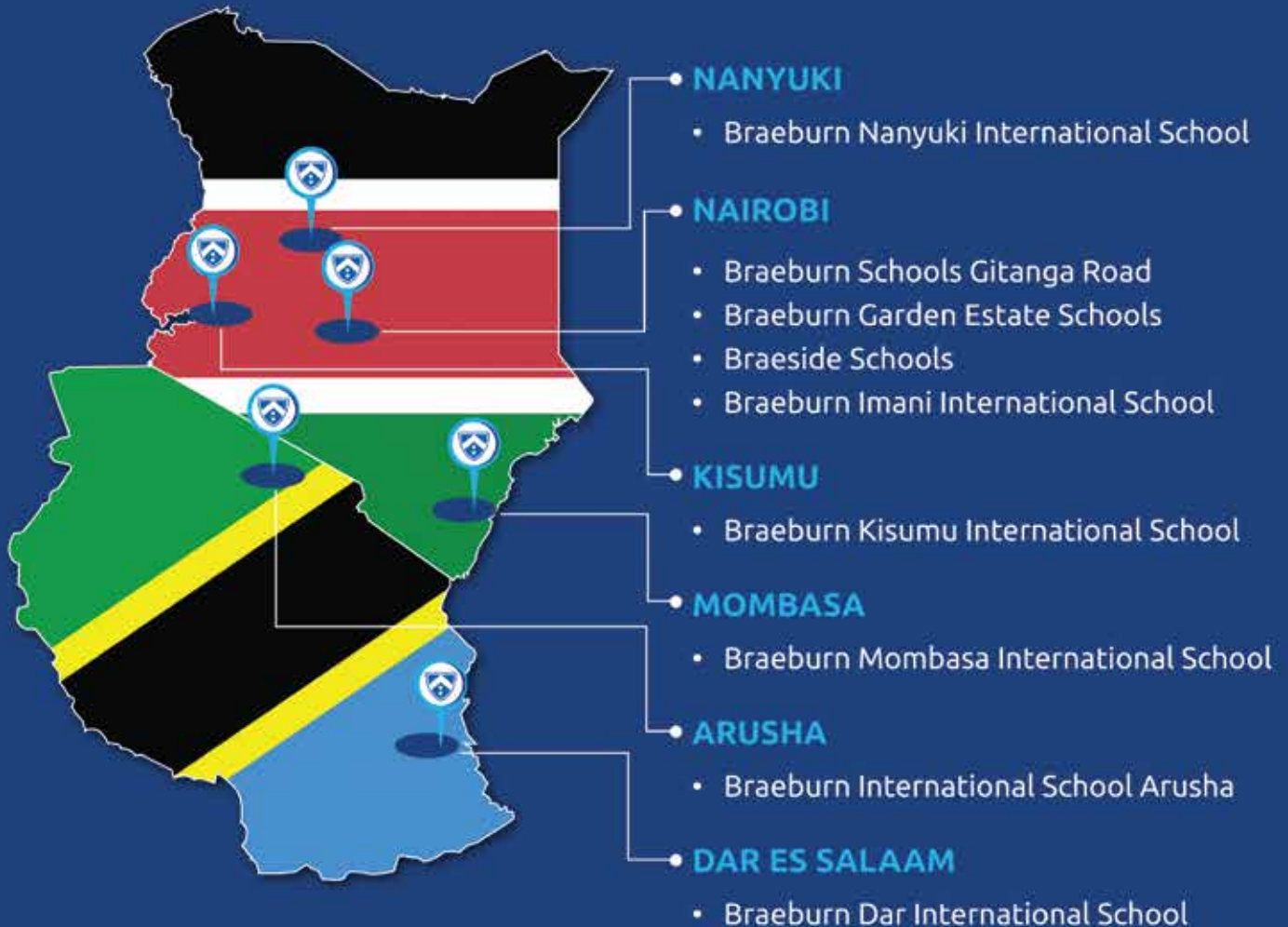


HUMANS IN HARMONY WITH HABITAT & WILDLIFE



# BRAEBURN INTERNATIONAL SCHOOLS

*British Curriculum in East Africa*



*"Wherever you are, giving your child the best education possible will always be your priority. Wherever we are, giving our students the best education possible will always be our priority."*

[www.braeburn.com](http://www.braeburn.com)



Cover picture by Christian Lambrechts

## INSIDE ARKIVE

03 Executive Director's View

04 Mau Eburu Ecosystem

10 Mt. Kenya Ecosystem

14 Aberdare Ecosystem

17 South Western Mau Ecosystem

18 Chargers' Corner

20 The Raffle Donors

22 Hog Charge

24 Wild Charge

26 Rhino Ark News

27 • Thank You

• Friends of Rhino Ark



### Photography by:

Christian Lambrechts, Eric Kihiu,  
Adam Mwangi, Kate Mwangi  
Washington Wachira, Bongo  
Surveillance Programme,  
L'Osservatore Romano,  
Car 6, Car 15, Car 49



## EXECUTIVE DIRECTOR'S VIEW

CHRISTIAN LAMBRECHTS

Over the past months, much attention has been given to wildlife conservation and management, with a particular focus on poaching. The burning of 105 tonnes of ivory and 1.35 tonnes of rhino horn on 30 April sent a clear message from the Kenyan government that there is no relenting on the war to conserve endangered wildlife species. This took place against the backdrop of a reported 80% decline in the poaching trend following implementation of tough anti-poaching policies.

Poaching is one of the key threats to our natural heritage. But poaching levels vary with time, going from lows during which elephant populations, for example, recover, to highs during which drastic population drops are observed.

The destruction of natural habitats - mainly due to land use change - is another key threat to our natural heritage. Unlike poaching, the creeping loss of natural habitats has been steady and often irreversible. Globally, the loss of natural habitat is the single greatest threat to biodiversity.

In Kenya, the excision of forest reserves, encroachment onto migratory corridors and wildlife dispersal areas, and infrastructure development in protected areas are activities impacting upon critical wildlife habitats. This is restricting the range of many species, threatening the survival of some endangered species, and resulting in human-wildlife conflicts. Regular crop damage by wildlife, especially elephant, is a major problem for farmers, who suffer great losses. Encounters between farmers and wildlife occasionally lead to human fatalities. Compensation claims in Kenya currently amount to several billion shillings. Such conflicts heighten tensions between humans and wildlife, disengage local communities from conservation, and contribute to poaching.

As we think about "what next" after the ivory burn, we must tackle the twin challenges of natural habitat loss and human-wildlife conflicts. Natural habitats are not idle land: they provide essential ecological services that contribute to our economic development and our well-being. Human-wildlife conflicts must be addressed to protect the lives of Kenyans and their property, and to secure their commitment to conservation. This is paramount as communities surround all protected areas and host a large proportion of our wildlife on their land.

Rhino Ark is continuing to work with stakeholders to develop solutions to these challenges in and around our mountain forest ecosystems, such as in South Western Mau, a new area where we are operating.

## RHINO ARK OBJECTIVES

Rhino Ark seeks solutions to the challenges facing the mountain forest ecosystems of Kenya, also known as the water towers. More specifically, Rhino Ark aims to:

- Conserve such ecologically precious indigenous forests and their provision of vital environmental services;
- Create a sustainable and harmonious environment that enables people and wildlife, including all flora and fauna, to coexist; and,
- Create and provide sustainable programmes for forest edge communities based on payments for ecosystem services. Such programmes and projects will be tailored to create income generation for the communities that support the conservation of natural resources.

### Rhino Ark is committed to:

- Mobilize stakeholders nationwide and internationally for initiatives to protect and conserve the habitat and promote managed use of forest

products for the benefit of present and future generations;

- Raise funds and other forms of support to develop sound management processes over entire eco-systems;
- Create frameworks where wider society and forest edge communities become involved in the management processes through public-private partnerships; and,
- Build mechanisms and management structures to prevent illegal exploitation of the forest habitat wherever it is threatened.

In so doing all stakeholders will benefit and the flora and fauna, particularly endangered species, will be better secured.

Our conservation work is anchored in three key values:

- Protecting ecosystem integrity;
- Ensuring full involvement of and participation by local communities; and,
- Forming effective partnerships.

# MAU EBURU ECOSYSTEM

## EBURU BIRD MAPPING PROJECT IDENTIFIES 96 BIRD SPECIES

In February 2016, a comprehensive 4-day expert survey of Eburu Forest listed 96 bird species. This survey was carried out by the Kenya Bird Map Project, with the aim of updating the official information about the birds found in the forest. Among the notable forest birds documented were the mountain forest buzzard and the African crowned eagle (both near-threatened species), the mountain yellow warbler, Doherty's bush-shrike and montane oriole, among others.

Rhino Ark facilitated the survey through funding of the logistical

costs. This support was provided as part of Rhino Ark's commitment to enhancing the documentation and dissemination of information about the biodiversity of Eburu Forest.

The Kenya Bird Map is a project of the Bird Committee of Nature Kenya (the East African Natural History Society) and other local and international partners. The work of this project is making an invaluable contribution to the public knowledge about Eburu's bird life, and the official Eburu birds check list will be shared once it is produced.



Male black throated wattle eye - Photo by Washington Wachira



Male variable sunbird - Photo by Washington Wachira

## EBURU FOREST-LAKE NAIVASHA CORRIDOR: FIRST WATER POINT COMPLETED

As part of the initiative to secure the wildlife corridor between Eburu Forest and Lake Naivasha, a water point has been established in the eastern part of Eburu Forest, near the two wildlife openings established along the Eburu Forest perimeter electric fence. The purpose of the water point is to: (1) enable wildlife to reside in the forest; and (2) reduce wildlife pressure on the lake shores and the riparian ranches.

The water point, fed by a steam jet, has been designed to be used by large mammals, as well as small animals and birds.



Water trough



Condenser unit for stream vent

# SCHOOLS CONSERVATION EDUCATION PROGRAMME UPDATE



**Top:**  
Teachers from Cypress Primary School receive their workshop kits

**Right:**  
Kiambogo Township Primary School teacher's receive their workshop kits



The Eburu schools' Conservation Education (CE) programme continues to gain traction, building upon the successful teachers' workshop series held in September 2015, with Rhino Ark maintaining the key role of providing programme support. The official workshop report has been published and distributed to all participants as part of a kit that included certificates of participation, CE curriculum books and an Eburu project information brochure.

Rhino Ark's Eburu field team comprising the Fence/Community Manager and Outreach Coordinator have visited each school during term 1 of the New Year, and follow up is being done on the various actionable resolutions made during the workshops. The need for an information sharing platform for CE teachers is one of the key workshop resolutions that has now been addressed with the establishment of a Facebook page for the group.

The field team will carry out mentoring visits to the schools to evaluate progress in CE curriculum implementation and to provide support to the teachers.

# EBURU CONSERVATION POSTERS PRODUCED

Over the years, there has been a paucity of printed content about Eburu Forest in the public domain. This situation has over the years resulted in widespread ignorance about the ecosystem, even amongst the local communities. Rhino Ark is working towards addressing this gap through various approaches, including the creation of a set of information materials comprising the following:

- 1) A1 size poster presenting the key attractions of Eburu Forest;
- 2) A1 size poster explaining the status of the mountain bongo antelope population of Eburu Forest;
- 3) A1 size poster explaining Rhino Ark's 4-pronged conservation approach in the Eburu ecosystem;
- 4) A5 size brochure (2-sided) providing a summary of Eburu Forest's values, conservation challenges and interventions geared to addressing the challenges.

The materials, produced with support from the MPESA Foundation, are in the process of being disseminated to the stakeholders at local level, with a focus on local schools, community opinion leaders, community hubs, and partner institutions, among others. The content is also available for downloading from Rhino Ark's website, to make it accessible to a wider audience.



Key attractions of Eburu



Mountain bongo conservation



Rhino Ark's conservation approach poster



Eburu conservation brochure

## WESTERN SUMMIT NATURE TRAIL MAPPED

As part of Rhino Ark's ongoing effort to document Eburu's features and biodiversity, the mapping of the western summit nature trail was carried out in November 2015, with the help of local Ndorobo community guides. The trail spans a 6.4km long hike that begins at the central campsite area in the heart of the forest along the main forest track, at an elevation of 2,519 metres. The trail rises through generally moderate gradient to a high point of 2,828 metres at the western summit peak. Along the trail, fine examples of indigenous trees such as *Allophylus abyssinicus*, podo, prunus, dombeya, east African olive and red cedar, can be seen.

Diverse birdlife inhabits the forest canopy: Hartlaub's turaco, Hunter's cisticola, Rupell's robinchat, white-headed wood hoopoe, willow warbler and paradise flycatcher are among the bird species that can be observed along the trail. The upper reaches of the trail are crowned by dense bamboo, and openings in the forest canopy provide commanding viewpoints towards Lake Naivasha to the south east and Lake Elementaita to the north. Walking the trail also promises the possibility of observing mammals such as the red duiker antelope, bushbuck and giant forest hog.

The western summit peak point, which is 4.1km from the trail starting point, can be reached in a comfortable 3 hours of hiking. From the peak the trail descends sharply, leading to the Lengina Dam (a colonial era relic) and then on towards the exit at Morop which lies to the north of the forest.



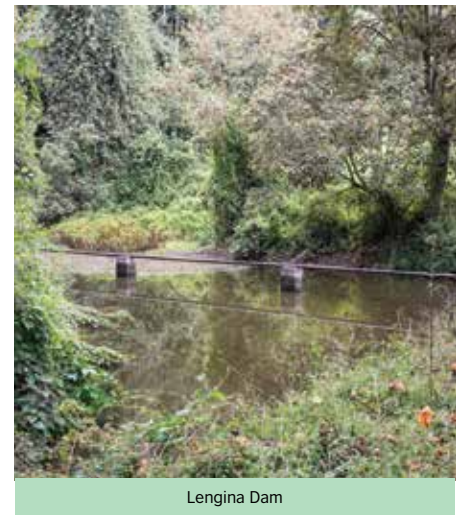
View point facing lake Naivasha



Orchid flowers along the trail



Bamboo forest



Lengina Dam

## FENCE MAINTENANCE SYSTEM STEPS UP



A fence attendant carries out maintenance work on the fence in Ndabibi area



Fence Technical Committee members inspect maintenance work in Ole Sirwa area

The 43.3 km long Eburu Electric Fence, completed in November 2014, is now over 1 year old. The fence is maintained by a 12-man team comprising 11 fence attendants and one supervisor, all reporting to the Kenya Forest Service Eburu Forest Manager. The implementing partners for the fence project, comprising Rhino Ark, Kenya Forest Service and Kenya Wildlife Service continue to guide and support the fence maintenance process

within the framework of a Fence Technical Committee (FTC).

The FTC, which is facilitated by Rhino Ark, meets monthly on site to review the status of the fence and address any issues arising. The FTC provides a platform through which experienced managers from the partner institutions can provide their expertise and guidance to the fence maintenance team.

Towards improving the fence maintenance process, the Eburu FTC has implemented a fence monitoring and reporting system. The system requires daily collection of data about each 4 km section of the fence, reported by the attendants responsible for the respective sections. Details reported are captured in a database that has been established for this purpose.

Analysis of the fence status is presented at each monthly FTC meeting, to assist in identifying and addressing trends and emerging issues. The FTC team physically walks a selected section of the fence to verify the status. The close attention to detail and commitment to verification, coupled with the consistent use of data analysis tools, provides an essential governance component to the management of the fence. This approach is improving the quality of fence management, even as the partners work towards establishing the Eburu Trust, which will provide the long-term fence management mechanism.

## EBURU FOREST-LAKE NAIVASHA WILDLIFE CORRIDOR: EASTERN BOUNDARY FENCED



Farming activity outside the fence



Completed fence facing Lake Naivasha



Fence construction work



Meeting point between completed Loldia Fence and Green Park Fence

Various large farms within the area between Eburu Forest and Lake Naivasha have over the years hosted wildlife within them, thus providing crucial space to sustain the wildlife populations that move between Eburu Forest and Lake Naivasha. These farms offer the wildlife seasonal grazing, breeding areas and water access. However, the boundary fences between the farms and neighbouring communities are often not built to a game-proof standard. This has allowed movement of wildlife into the neighbouring community areas – a situation that has allowed the conditions for human/wildlife conflict to persist. Loldia Farm, which immediately borders Eburu Forest to the east and south east, is the area through which wildlife transits out of the forest and defines the start of the wildlife corridor towards Lake Naivasha.

To address human-wildlife conflict along the Eburu Forest to Lake Naivasha wildlife corridor, Rhino Ark committed to support the upgrading of approximately 6 km of fence between Loldia Farm and the neighbouring settlement areas to a wildlife-proof electric fence standard. This mitigation measure was developed within the framework of the Eburu-Lake Naivasha Connectivity Committee, comprised of key stakeholders, including Rhino Ark, Kenya Wildlife Service, Kenya Forest Service, representatives of large farms hosting wildlife within the corridor and representatives of the local community.

In February 2016, the first stage of this upgrading work was completed, covering a 3.5 km section of the eastern boundary of the wildlife corridor. This section begins at the Eburu Forest boundary fence line near the fire lookout tower in the north east and extends initially north, and then turning south, to link to the Green Park boundary electric fence. With the completion of this fence section, the eastern boundary of the wildlife corridor is now fully secured, even against burrowing animals. This mitigation will contain wildlife securely within the wildlife corridor, thus protecting the local community in Eburu settlement and adjacent areas from crop damage or animal attacks, and helping to win the support of local communities in wildlife conservation. Local farmers can now look forward to increased farm yields, and less time spent guarding their crops.

Staff from Loldia farm were trained on fence construction work and fully participated in the construction of the fence. The section of fence will be maintained by Loldia Farm, with technical advice from the Eburu fence maintenance team.

The committee is now making arrangements to address game-proof fencing of the western boundary of the wildlife corridor.

# MODEL TREE NURSERIES IN 2 EBURU SCHOOLS COMMENCE OPERATIONS



1. Pupils of Emmanuel Primary School sowing seeds into the nursery seed bed  
 2. Eburu Forest Manager Samuel Mundia (left) trains pupils and teachers of Ndabibi Primary School  
 3. Pupils from Ndabibi Primary School have a practical session after receiving training  
 4. Seedlings in seed bed ready for potting at Ndabibi Primary School



Rhino Ark's conservation education and community outreach initiatives are gathering pace following the establishment of model tree nurseries in two local primary schools, Emmanuel and Ndabibi Primary Schools respectively. As of January 2016, the two nurseries are fully operational. The nurseries, funded by the MPESA Foundation under the Eburu Ecosystem Conservation Project, aim to enhance the pupils' practical experience in agroforestry, while providing a revenue opportunity for the schools from sale of tree seedlings.

Training of teaching staff and pupils has been carried out by Kenya Forest Service. Seeds from the certified stock procured from the Kenya Forestry Research Institute (KEFRI) have been sown in the stone seed beds at each school, and germinated seedlings are now being potted into polythene tubes.

The pupils' participation in this process is contributing to the enrichment of their conservation education learning experience. The project team is now preparing to establish tree nurseries in the next three selected schools, namely Eburru Primary, Songoloi Primary and Loldia Primary.

# MPESA FOUNDATION PLANTS 5,000 TREES TO RESTORE DEGRADED FOREST

On 21 March 2016, the MPESA Foundation commemorated the International Day of Forests by planting 5,000 tree seedlings in Eburu Forest. The replanting was done at Ole Sirwa outpost, an area inside the forest boundary that is heavily degraded.

Over 500 participants, comprising up to 100 staff members of the MPESA Foundation and 50 soldiers of the Kenya Defence Forces joined hands with partners Rhino Ark and Kenya Forest Service, the local community (including 50 school children from Ol Jorai Primary School), officers from the Kenya Police Service and dignitaries from Nakuru County to contribute to the rehabilitation of the forest. The enthusiastic participation of the local community in the rehabilitation work signals an increasing level of interest in the conservation of the forest, which has been greatly enhanced by the Eburu Electric Fence and fence gates.

The 5,000 seedlings were planted within an area of 2 hectares, which is adjacent to a previous tree planting done by the MPESA Foundation in year 2015 covering 1 hectare.



MPESA Foundation staff with tree seedlings to be planted



Pupils from Ol Jorai Primary School with seedlings



KDF officer plants a tree with MPESA Foundation staff



Police officer plants a tree



# LANDSCAPES AND BIODIVERSITY



# MT KENYA ECOSYSTEM

## 100 KM OF THE MT. KENYA FENCE COMPLETED

A milestone in the construction of the Mount Kenya Electric Fence has been reached with the completion of 100 kilometres of the comprehensive fencing that will eventually encircle Mount Kenya. By the time it is finally constructed, the fence will reach 450 kilometres – giving protection to a World Heritage Site, a precious water towers and a unique range of biological diversity.

The built fence currently runs from Kiringa River, Kirinyaga County, passes through Embu and Tharaka Nithi counties and is now few kilometres away from Thingithu River in Meru County. The Mount Kenya Electric Fence is constructed under a public-private partnership, involving Government agencies (Kenya Wildlife Service and Kenya Forest service), Rhino Ark, the Upper Tana Natural Resources Management Project, Mount Kenya Trust and the local communities.

The fence construction was launched on 9 September 2012 by Hon. Njiru Githae, then Minister for Finance. The fence is built in phases, each of them under a separate management agreement signed among the financing partners



Plaque commemorating the launch of the Mt. Kenya Electric Fence, 9 September 2012



Completed energizer house at Castle Forest Station (Phase I)



Electric fence, Phase I (Kiringa River – Thuchi River)



Commissioning of the completed of Phase I



Electric fence along Chuka Forest, Phase II



Electric fence along Chogoria Forest, Phase II

## PATROL MONITORING SYSTEM FOR MT. KENYA NEARLY READY FOR DEPLOYMENT



Participants of the training in the Patrol Monitoring System held on 20-22 January 2016

With technical support from ESRI – one of the world leading mapping software companies - and Kenya Wildlife Service, Rhino Ark completed the development of a Patrol Monitoring System for Mt. Kenya. Four rangers from KWS and two scouts from Mount Kenya Trust were trained in the use of the system that was tested over a period of six weeks.

The system aims to (i) enhance the collection and transmission of data on incidents in the protected areas, and (ii) provide managers with a web-based interface to access, query and visualise observations made and tracks followed during patrols on a near-real time basis.

More specifically the system will enable to:

- 1) Check / verify whether patrols have actually been conducted;
- 2) Map out patrols and know exactly where they are conducted;
- 3) For the senior management – visualize the observed illegal activities immediately;
- 4) Know whether patrol teams follow always the same route or change route to cover most areas;
- 5) Identify areas that are seldom or never patrolled;
- 6) Map out hotspot areas accurately;
- 7) Establish trends in illegal activities;
- 8) Understand the impacts of management interventions.

Once fully tested the system will be deployed to all patrol teams on Mt. Kenya.



KWS Rangers and Mount Kenya Trust scouts using the state-of-the art GPS of the Patrol Monitoring System

## FOREST ELEPHANT CENSUSES / FOREST HEALTH SURVEYS SUCCESSFULLY CONDUCTED



Participants in the Forest Elephant Census / Forest Health Survey

32 rangers and scouts, seconded by KWS (20), Rhino Ark (5), Mount Kenya Trust (4) and Bongo Surveillance Programme (3), participated in the most intensive forest elephant censuses & forest health surveys ever undertaken on Mt. Kenya. Organized in eight teams of four persons, they surveyed close to 500 transects of 200 metres. The exercise started on 27 January 2016 and was completed in one month.

The survey was preceded by a training in the methodologies to be used in the elephant censuses and the forest health surveys. The training was led by Hilde VanLeeuwe from the Wildlife Conservation Society (WCS) and Mariana Rufino from the Centre for International Forestry Research (CIFOR).

The exercise is a partnership initiative between WCS, KWS, Rhino Ark, Mount Kenya Trust, Bongo Surveillance Programme and CIFOR. It is primarily funded by a Disney Grant managed by WCS with in kind and cash support from the

other partners.

Similar censuses and surveys will be undertaken in the Aberdare and the Mau Forests Complex. They will be repeated every three years to monitor (i) the elephant population in these montane ecosystems and (ii) the health of the forest. This will also enable keeping under review the impacts of conservation efforts in these protected areas.

The census estimated the elephant population on Mt. Kenya at 2,600 animals. Analysis of the forest health data is still on-going.

# ADDRESSING HUMAN-WILDLIFE CONFLICTS IN THE IMENTI FOREST

Rhino Ark, KWS, KFS and the Upper Tana Natural Resources Management Project met with representatives of the Imenti Forest-adjacent communities affected by human-wildlife conflicts on 27 January 2016.

The increase of human-wildlife conflicts in the area is the result of vandalism and poor maintenance of a 20 kilometres four-strand fence built in 1997. Over the past two years, eight community members have been killed by elephants or electrocuted by home-made fences. During those conflicts, eight elephants have also been killed.

In order to help address the situation, the communities committed to raise KES 13.5 million - of which KES 6 million has already been contributed - and requested KWS and Rhino Ark to provide the balance of the funds required to build a new fence. The Imenti Forest is part of the Rhino Ark Mt. Kenya Electric Fence Project. However,

fence construction is currently taking place in Ruthumbi, still far away from the Imenti Forest.

During the meeting, a way forward was agreed upon, with communities committing themselves to take the utmost care of the fence and to report any act of vandalism. To respond speedily to the crisis situation in the Imenti, KWS and Rhino Ark deployed a second fence build team to Mt. Kenya. The team commenced works on March 8th, 2016 where they were welcomed by Hon. Abdul Rahim Dawood, Member of Parliament for North Imenti Constituency, KWS Assistant Director for Eastern Conservation Area, Rhino Ark Fence and Community Manager, local leaders and many community members.

As of 19 April 2016, 5.7 kilometres of the Imenti Electric Fence have already been rebuilt.



1



2

1. Meeting with representatives of the Imenti Forest area on 27 January 2016
2. Placement of the first post of the Imenti Electric Fence on 8 March 2016
3. MP North Imenti Constituency, Hon. Abdul Rahim Dawood addresses the community during the launch of construction the Imenti Electric Fence at Kithoka on 8 March 2016
4. Community leaders meeting at Thiiri Community cultural Centre before the launch of the construction of the Imenti Electric Fence
5. A group of approximately 20 elephant passing near the newly built Imenti Electric Fence during the fence inspection on 19 April 2016



3



4



5

## SURVEILLANCE FLIGHT ABOVE THE SOUTHERN SLOPES OF MT. KENYA SUCCESSFULLY CONDUCTED



Team participating in the surveillance flight above Mt. Kenya forest on 19 January 2016

Rhino Ark, together with Kenya Forest Service, Kenya Wildlife Service and Mount Kenya Trust, carried out a surveillance flight above the forest of Mt. Kenya located in Embu County and part of Tharaka-Nithi County. The purpose of the flight was to monitor illegal activities, in particular the logging of indigenous trees.

The flight enabled the discovery of one major illegal logging site. Investigations conducted by KFS following the outcome of the flight led to changes in management in Tharaka-Nithi County and action against one forest manager.

## COMMUNITY SENSITIZATION MEETINGS HELD IN RUTHUMBI FOREST

With the support of the Upper Tana Natural Resources Management Project, Rhino Ark and its partners held five community sensitization meetings along the boundary of Ruthumbi Forest, Mt. Kenya. These meetings aimed at raising awareness on the Mt. Kenya Electric Fencing project and enhancing the ownership of the fence especially by the forest-adjacent communities. When completed this section of the fence will stretch from North Mara River to Thingithu River and will enclose the entire Ruthumbi Forest including Nthunguru Hill.

The meetings were chaired by the area Chiefs and over two thousand community members were reached out. The various speakers focused on fence construction process, gate management, Wildlife Conservation and Management Act, Forest Act and bio-enterprises.



Members of the Marimba Community Based Organization (Ruthumbi Forest) raise their hands as a sign of commitment to the protection the Mt. Kenya Electric Fence



Meeting with the Ruthumbi Community Forest Association

# ABERDARES ECOSYSTEM

## MONITORING OF NORTHERN ABERDARE CONTINUES



AJSU team during a briefing meeting

The Aberdare Joint Surveillance Unit (AJSU) conducted three operations in the Northern Aberdare:

- 1) **October - November 2015:** From Shamata Gate to Rhino gate;
- 2) **December 2015:** Gakanga, Kamianda, Bellevue, Embaringo, Nine One, Gathariga and Kasimba areas; and,
- 3) **January 2016:** Pesi, Metha, Malewa and 'Site' areas in Northern Aberdares.

These three operations followed an earlier exercise conducted in July-August 2015. The purpose of the continued patrolling efforts

is to address illegal activities in Northern Aberdare which is a known hotspot area.

Five persons were arrested during the last two operations. Observations made during the January 2016 operation indicate a reduced level of illegal activities in the patrolled areas in the Northern Aberdare. This reduction is likely to be a result of the repeated operations by AJSU together with the support of KWS and KFS in the Northern Aberdare.

AJSU is a joint KWS-KFS-Rhino Ark initiative to engage forest-adjacent communities in conservation. It is financed by Rhino Ark.

## ABERDARE TRUST BEING OPERATIONALIZED



Aberdare Trust Logo

The second meeting of the Trustees of the Aberdare Trust was convened on 22 March 2016. The meeting main focus was on (a) the finalization of the Job Description and Vacancy Advert for the CEO position; (b) the review of a transition plan from the current fence maintenance arrangements to the Aberdare Trust; (c) the adoption of the Aberdare Trust logo; and (d) the opening of a bank account.

Rhino Ark signed a lease agreement with KWS that will enable the

relocation the Rhino Ark Nyeri Office to KWS King'ong'o Station. A plan for four office spaces (two for Rhino Ark and two for the Aberdare Trust) was prepared and submitted to KWS for approval. The plan is currently being reviewed. The benefits of the relocation of are:

- a) Better visibility and accessibility. The KWS Station is located on the main road between Nyeri and Kiganjo;
- b) Better security. Rhino Ark Nyeri office was broken into in early 2013. During the robbery, Rhino Ark lost equipment, including a GPS and a digital camera;
- c) Better coordination with KWS. The Station provides services to both Aberdare and Mt. Kenya. It hosts several units with which Rhino Ark collaborates: Research (Bongo, wildlife corridors), Radio Communication (maintenance of the radios located around the fence), GIS (collection of spatial data);
- d) No rent. This will enable Rhino Ark to save over KES 300,000 yearly that will be invested in conservation activities.

# SCHOOL OF HOPE (SOH) PROJECT

Rhino Ark in partnership with ChallengeAid, a UK based Charitable Trust, has successfully established two community libraries dubbed 'School of Hope (SOH)' at Bondeni and Njogu-ini primary schools. The concept of SOH is to provide a facility where learners can converge after the normal school hours to do private studies and do homework/school assignments. The youthful learners are also engage in music, drama and sport activities. Life skills are also taught in these community facilities.

Fifty eight (58) and forty three (43) have been enrolled in Bondeni and Njogu-ini SOH respectively.

In the two SOH, the following have been achieved:

- a) Renovation of classrooms and provision of electricity;
- b) Provision of furniture (desks, chairs, book shelves);
- c) Provision of textbooks and other reference materials;
- d) Extra-curriculum activities: cricket game has been introduced in these two rural area facilities. A volunteer coach is training participants; and,
- e) Support to girl child: sanitary towels are provided to girls attending SOH Bondeni and Njogu-ini. The head teacher, Bondeni Primary School, said that the provision of the sanitary towels will go a long way to help the girls not to miss classes during their menstrual periods



Iestyn Thomas, CEO and Founder of ChallengeAid, opens SOH Njogu-ini



SOH Bondeni before the renovation



SOH Bondeni equipped with desks and textbooks



SOH Bondeni pupils receives sanitary towels

# ABERDARE – MT. KENYA WILDLIFE CORRIDOR

## Local leaders' workshop conducted

A workshop with the members of the Committee on Environment and Water of the Nyeri County Assembly was held on 3rd February 2016 at the Mount Kenya Trust offices. The objectives of the workshop were to share with the Members of the County Assembly (MCA) experiences learned from other wildlife corridors, discuss the benefits of establishing the Aberdare – Mt. Kenya wildlife corridor and agree on the next steps. The MCAs expressed strong support for the corridor proposal.

## Aerial recce of the proposed corridors carried out with local leaders

A reconnaissance flight of the wildlife corridor between Mt. Kenya and Aberdares was conducted with the members of the Committee on Environment and Water of the Nyeri County Assembly on 4th February 2016. The flight was a follow-up to the wildlife corridor workshop held the previous day. The purpose of the flight was to build further the understanding of the proposed corridor and its feasibility. The flight was facilitated by Rhino Ark.

## Direct engagement with the land owners

Following the engagement with the local leaders, one-to-one meetings with land owners are now being held. The response by the MCAs is positive with all land owners met so far interested in the wildlife corridor proposal.



Mt. Kenya-Aberdare wildlife corridor workshop with the members of the County Assembly of Nyeri.



Aerial surveillance team



# SOUTH WESTERN MAU ECOSYSTEM

Over the last two years, Rhino Ark, through its Executive Director, has been advising the Netherlands-based IDH Sustainable Trade Initiative in the formulation and early implementation of their project “Initiative for Sustainable Landscape (ISLA)” aiming at conserving South Western Mau Forest Reserve and bringing sustainability in the broader South Western Mau landscape. ISLA was launched by H.E. Hon. Isaac Ruto, Governor of the County of Bomet, and H.E. Prof. Paul Chepkwony, Governor of the County of Kericho, on 30th June 2015.

South Western Mau Forest Reserve is the largest forest block in the Mau Forests Complex. It covers approx. 60,000 hectares. It is the second

forest block in the Mau where Rhino Ark is operating, after Eburu Forest Reserve.

In addition to providing advisory services, Rhino Ark is currently involved in the implementation of two components of ISLA:

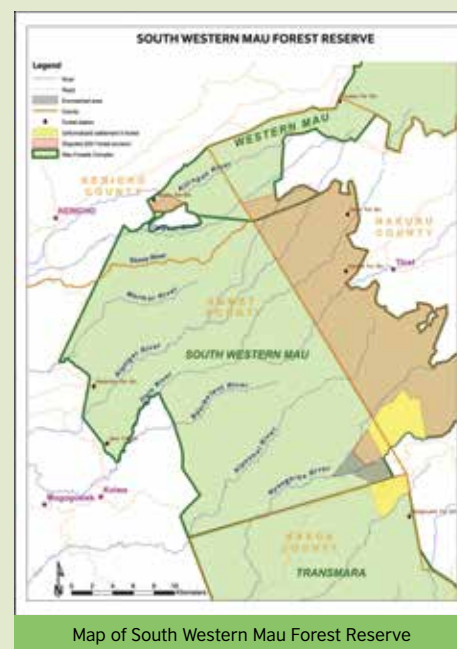
- (1) feasibility study of establishing a physical barrier along the north-eastern boundary of South Western Mau; and
- (2) quarterly surveillance flight above South Western Mau Forest Reserve and part of the adjacent forest block, namely Western Mau Forest Reserve

## FEASIBILITY STUDY FOR FENCING SOUTH WESTERN MAU KICKED OFF

Dr. Thomas Butynski and Dr. Yvonne de Jong, consultants of Rhino Ark, conducted the feasibility study of establishing a physical barrier along the north-eastern boundary of South Western Mau Forest Reserve. The purpose of such a physical barrier would be to protect forest-adjacent communities from marauding wildlife that are a threat to their life and livelihoods. The barrier would also help address illegal forest resource extraction by controlling the access to the forest through a number of gates.

The draft report of the feasibility study, funded by IDH/ISLA, was completed by 30th April 2016.

Dr. Butynski was the lead consultant who carried out a similar feasibility study for the Aberdare in 1999. That study provided the basis for the construction of the now completed 400 kilometres Aberdare Electric Fence which is recognized as a major success in addressing the twin challenges of marauding wildlife and illegal forest resource extraction affecting many mountain forests.



## SECOND SURVEILLANCE FLIGHT ABOVE SOUTH WESTERN MAU SUCCESSFULLY CONDUCTED



Team participating in the surveillance flight above South Western Mau on 25 February 2016

As part of IDH/ISLA project, Rhino Ark is coordinating quarterly surveillance flights above the 60,000 hectares of South Western Mau Forest Reserve and parts of Western Mau Forest Reserve. The second flight was conducted on 25 February 2016. Participants in the flight included the Bomet County Minister for Environment, KFS Ecosystem Conservator for Bomet County, KFS Ecosystem Conservator for Kericho County, KWS Warden for Bomet and Kericho counties, Rhino Ark Executive Director and Rhino Ark Fence and Community Manager.

The purpose of the flight was to detect illegal activities in the forest and assess the impacts of law enforcement operations conducted following the first flight carried out in November last year. Indeed, a series of operations have been mounted by KFS and KWS following the observations made last November. These operations led to the arrest of 14 persons involved in illegal charcoal production, destruction of many charcoal kilns and destruction of 10 illegal cattle enclosures.

The flight was made possible thanks to Finlays providing the aircraft and IDH's financial support.

# CHARGERS' CORNER

## EVENT ACCESS & SPECTATOR ACCOMODATION

The Rhino Charge ticketing portal: <https://rhino-charge.org/> is the OFFICIAL and ONLY website to use to book and pay for the following:

1. Entry Ticket- please note that entry tickets are not transferable or refundable
2. Vehicle Pass known as Landowner Access Fee (LAF) - please note that vehicle passes are not transferable or refundable.

All Vehicles entering the Rhino Charge venue are required to purchase LAF stickers at a rate of:

1. KES 10,000 per vehicle with less than 6 seats
2. KES 20,000 per vehicle with between 6 – 12 seats
3. KES 50,000 per vehicle with 13 or more seats

Additional LAF's can be purchased at the venue but will be 150% of the price stated above and cash will be accepted.

3. Accommodation in the spectator camp from accredited camp operators.

Which accommodation options are available for the 2016 Rhino Charge?

RHINO CHARGE 2016 (Total spaces)	Bunduz Budget	Bunduz Economy	Saruni/Tarpo Luxury
Sharing a tent (self-drive)	KES 15,500	KES 18,750	KES 36,000
Single in a tent (self-drive)	KES 17,500	KES 20,500	KES 44,000
Sharing a tent (incl. transport)	KES 22,750	KES 25,500	KES 52,200
Single in a tent (incl. transport)	KES 24,500	KES 28,500	KES 60,000
Self-camping (self-drive)	KES 7,750	KES 7,750	N/A

All options listed above are rates per person, full board (excluding self-camping option), for a 2 night package from 29 May – 31 May 2016.

The accommodation rates are payable as follows:

- 0 – 5 years = free of charge
- 6 – 11 years = pay 75% of adult price
- 12 years and above = pay full price

Services included for the self-camping option are toilet (1 per 5 people) and shower facilities (1 per 5 people), garbage collection and communal security. For more information on the full board accommodation packages, please download the camp operator's flyers (PDF) by clicking below:

1. Bunduz – Budget Option
2. Bunduz - Economy Option
3. Saruni/Tarpo – Luxury option

Any cancellations or refunds are done directly through the camp operator of your choice and yourself with the following refund policy applying to ALL accommodation bookings;

- 100% refund if booking cancelled before or on the 31st March 2016;
- 75% refund if booking cancelled on or after 1st April but before or on 15th April 2016;
- 50% refund if booking cancelled on or after 16th April but before or on 30th April 2016;
- 25% refund if booking cancelled on or after 1st May but before or on 15th May 2016;
- No refund if booking cancelled on or after 16th May 2016

Disclaimer: please note that the Rhino Charge does not assume any liability for timeliness, correctness, completeness or quality of the information provided by the accredited camp operators. Furthermore, the Rhino Charge is not responsible for the content of external websites of the accredited camp operators. The Rhino Charge is not responsible for the quality of the tents, the food quality, or other services provided by the accredited camp operator. Further, the Rhino Charge does not accept any liability for failure to provide the services contracted or any of them due to circumstances beyond our control.



## RHINO CHARGE 2016 MERCHANDISE

This year's merchandise will be on sale at the Rhino Charge venue. Kindly purchase your tshirts, caps, Rhino Charge DVDs and much more in support of Rhino Ark.



# AUTOXPRESS MAKES **KES 2.5 MILLION** CONTRIBUTION TO SUPPORT THE ACTIVITIES OF THE RHINO ARK CHARITABLE TRUST

AutoXpress has admired the great work that the Rhino Ark Charitable Trust has been doing since its inception in 1988 to support conservation in Kenya. While it has played a role over the years to support the activities of the Rhino Ark by supporting various teams participating in the Rhino Charge, AutoXpress is honoured and privileged to play a far more significant and direct role this year. Mr. Michael Turner, a director on the AutoXpress board and also a member of the board of trustees of the Rhino Ark Charitable Trust brought the two organizations together. The discussions culminated in a partnership whereby AutoXpress agreed to contribute the equivalent of KES 2.5 million in tyres over the next two years to support the Rhino Ark Charitable Trust to enable it to continue doing the wonderful work it has been doing in preserving our environment.

Like the Rhino Ark Charitable Trust, AutoXpress is a leader in its field of work. It is the largest auto parts distribution and vehicle servicing company in East Africa with 29 outlets across Kenya, Rwanda and Tanzania representing some of the best known global brands in the automotive sector ranging from Pirelli and Dunlop in the tyre sector and Bosch in the service parts sector.

AutoXpress has recently expanded the range of products and services that it offers to its customers by introducing car servicing and brakes replacement in addition to products and services it has traditionally offered like tyres, batteries, wheels, shock absorbers, coil springs, lubricants, car accessories, computerized vehicle diagnostics, wheel alignment and wheel balancing. Should your vehicle require additional attention, AutoXpress has launched its first bumper to bumper car service centre under the "Bosch Car Service" brand on Mombasa Road exactly opposite its existing AutoXpress Centre. The Bosch Car service is a complete one-stop service centre and is designed to look after everything that your car needs. AutoXpress plans to open another 10 service centres within the year to ensure that it is ever closer to you, its customer.

In keeping with its tradition of bringing innovation into the auto parts and vehicle servicing business, AutoXpress recently launched XtraSure, Kenya's first and only tyre damage guarantee. The XtraSure Tyre Damage Guarantee will protect you, the owner of the vehicle, from paying for any unwarranted repairs or unplanned replacement of tyres damaged by road

hazards. They include but are not limited to rocks, broken glass, nails, kerbs and potholes.

The good news is, AutoXpress has a solution for you! When you buy and fit your passenger or SUV tyres from any AutoXpress fitment centre countrywide, whatever happens to them, your fault or not, AutoXpress will fix or replace them. It will sort out anything from kerb damages, rips, punctures or glass cuts. You only pay for the tread you have used. It is free of charge for the first year. It can be extended for a second year at a cost of 3% of the purchase price of the tyres.

This guarantee comes with any tyre brand purchased from AutoXpress, provided that the vehicle that the tyres are fitted on, is used for private or personal use. The XtraSure Tyre Damage Guarantee provides you, our customer, with complete peace of mind when driving on bad roads and difficult terrain.

AutoXpress commends the great work the Rhino Ark Charitable Trust is doing and wishes all the participants and supporters the very best for the 2016 Rhino Charge. It looks forward to seeing many of you at its checkpoint at the gauntlet.



Kenya's 1st  
Tyre Damage Guarantee  
powered by:



**SLIT IT  
RIP IT  
~~~~~ WE'LL ~~~~~  
REPLACE IT**

When you buy your tyres from AutoXpress, whatever happens to them, your fault or not, we'll fix or replace them. Yes, we will sort out anything from kerb damage, rips, punctures or glass cuts. You only pay for the tread you've used. With a guarantee this good, why buy tyres from anywhere else?

\*Terms and conditions apply

Buy your tyres now  
☎ 0709 872 000  
🌐 [www.auto-xpress.com](http://www.auto-xpress.com)



# THE 2016 RAFFLE DONORS

OUR THANKS GO TO THE FOLLOWING DONORS WHO HAVE PLEDGED PRIZES FOR THE RAFFLE

## ADVENTURE & TRAVEL

AIRKENYA EXPRESS • ALPINE ADVENTURES LTD • CHARLIE CLAW'S • COASTAL AVIATION • FLY-SAX  
FLY540 • GLEN EDMUNDS PERFORMANCE DRIVING SCHOOL • H2O EXTREME SURF AND KITE CENTRE  
HELICOPTER CHARTER EA LTD • IOLAUS • LAIKIPIA WILDLIFE FORUM • SAFARILINK • SAVAGE WILDERNESS • SIMBA



## LODGES & HOMESTAYS

ANGAMA MARA • ATUA ENKOP AFRICA • BLUE BAY BEACH RESORT AND SPA • BULLOCH HOUSE • BUNSON TRAVEL  
CARL & JUDY CHAFFEE • COLIN & NICOLE CHURCH • DIANI BLUE • DRIFTWOOD BEACH CLUB  
ELEWANA COLLECTION • FAHARI PALACE • FAIRMONT MARA SAFARI CLUB • FAIRMONT MOUNT KENYA SAFARI CLUB  
FISHING LODGE (KWS) • FLAMBOYANT • GAMEWATCHERS SAFARIS • GROGAN'S CASTLE HOTEL  
HELEN FEATHER & ROSS FIELD • INTIMATE PLACES • KENYAWAYS BEACH HOTEL & RESTAURANT  
KICHECHE LAIKIPIA CAMP • KULALU CAMP • LAKE NAKURU LODGE • LANTANA • LEISURE LODGE RESORT  
LIONS BLUFF LODGE • NAIBOR • NGOBIT RIVER LODGE • OL PEJETA BUSH CAMP • OL PEJETA PELICAN HOUSE  
PHOENIX SAFARIS • RHINO ARK • SANCTUARY RETREATS • SARUNI • SAROVA HOTELS • SATAO ELERAI CAMP  
SIMBA LODGES • SOPA LODGES • SUNBIRD LODGE • SWEET WATERS SERENA • TIWANI COTTAGES  
THE SANDS AT CHALE ISLAND • TONY & SUSIE CHURCH • TREETOPS • WILDLIFE WORKS



## RESTAURANTS & HAMPERS

ALI BARBOUR'S CAVE RESTAURANT • AVOCADO DESIGN • BROWNS CHEESE • CAPE CHESTNUT • FARMERS CHOICE  
FORTY THIEVES • KENCHIC LTD • KENYA SWEETS LTD • LIME CATERING • NEED GELATO • OL PEJETA  
OSTERIA DEL CHIANTI • PRIME CUTS BUTCHERY AND BISTRO • PURE MOUNTAIN FARM OIL  
RAKA MILK PROCESSORS LTD • SIXTY THREE WINES AND SPIRITS • SLATER & WHITTAKER • THE COFFEE SHACK  
THE RIVER CAFÉ • THE SANDS AT NOMAD • THE TAMARIND GROUP



## LUXURY, LIFESTYLE & ACCESSORIES

4SHORE • AFRICAN LILY • ANSELM - KITENGELA HOT GLASS • BATA KENYA • BETTER GLOBE FORESTRY  
BOOKSTOP LTD • CAMA ENTERPRISES • CHLORIDE EXIDE • CHILLIMANGO CLOTHING • CINNABAR GREEN  
COOKSWELL JIKOS • COPYPOINT LTD • DECK DISTRIBUTORS • ECOZOOM • ERIC KIHU • FUJI FILM • GARMIN  
JOHARI GLASS • HARVEET SINGH • HEAT PRESS MEDIA • KAPOETA BY AMBICA • LA PALETTE  
LAIKIPIA WILDLIFE FORUM • LITTLE RED • LOCATION AFRICA FILMS LTD • MATBRONZE WILDLIFE ART  
MUTHAIGA MINI MARKET • NAWALIKA DESIGNS • PURE ENERGY EAST AFRICA LTD • RHINO ARK  
ROB'S MAGIC • SANDSTORM KENYA • SERENITY SPA • SUNNY DAZE • TARA DESIGNS LTD • TEEKU PATEL  
TERESA SAPIEHA • TEXT BOOK CENTRE • TOOLCRAFTS LTD • VILLAGE MARKET PHOTOSHOP • XPANDA



Thank you to the raffle committee for securing these prizes

Helen Feather, Valerie Gunputrav, Gillie Hutchinson, Belinda Levitan, Leah Levitan, Devina Meinzigen, Kate Mwangi, Henrietta Remnant, & Tracey White

# RIVERCROSS TRACKING MARKS 9 YEARS OF RHINO CHARGE GPS MONITORING



Safety during the Rhino Charge is a key feature especially given the kind of terrain that the vehicles operate in and it is therefore imperative we “have eyes” on all participants at any given time. In the previous Rhino Charge events the Rhino Charge officials have had a difficult time maintaining visual contact on all the participants at the same time. This therefore made it quite difficult to locate participants and evacuate them whenever a situation arose.

RiverCross Tracking provided a solution for this particular challenge using a state of the art Satellite based system. Since their inaugural participation in Namunyak in 2008, RiverCross has continued to provide safety monitoring at the Rhino Charge.

At each event Rivercross ensures that each participant’s vehicle is fitted with a GPS tracking device. The device reports on the real time location of the vehicles, routes used and distance

covered to complete the circuit. The system also reports on the guard posts that the participants have checked into and the ones that they are yet to check into during the race.

The information is then relayed on a real time basis to the RiverCross homegrown and customizable software-BlueTrax®. Spectators and other supporting team members are also given the opportunity to view their team members as they cut across the “wilderness” using the on the BlueTrax® platform.

In partnership with the Rhino Charge, RiverCross supports the activities of the Rhino Ark by supporting conservation efforts in the country which lead to saving our natural resources especially for generations to come.

With over 10,000 devices deployed throughout East and Central Africa, RiverCross continues to be a leader in the provision of innovative asset monitoring solutions.



## Kestrel Capital (East Africa) Limited

The leading independent investment bank in Kenya for local and foreign institutional and high net worth investors with a strong focus on market and company research.

- Stockbroking and Bond Trading
- Market and Company Research
- Public Offers and NSE Listings
- Corporate Finance Advisory
- Private Placements
- Commercial Paper and Debt Financing

**KESTREL CAPITAL**  
MEMBER OF NAIROBI SECURITIES EXCHANGE  
SINCE 1995

### Kestrel Capital (East Africa) Ltd

Orbit Place, 2nd Floor, Westlands Road  
P.O. Box 40005-00100  
Nairobi, Kenya

Phone: +254 (0)20 225 1758

Direct Line: +254 (0)20 222 2193

Personal Mobile: +254 (0)722 375380

Email: [darshanih@kestrelcapital.com](mailto:darshanih@kestrelcapital.com)

# HOG CHARGE 2016 RAISES **KES 3,669,574**

KES 3,669,574 was raised at the 18th annual Hog Charge cycling event. The event is organized to raise funds to go towards Mark Tilbury's team (Car 35) entry pledge for the Rhino Charge, and ultimately towards Rhino Ark's conservation projects.

On Sunday 24th January 2016, 99 teams battled it out at the event held at Sukari Ranch (Peponi School) in Ruiru. Children from over 10 schools participated in this mountain bike challenge and hundreds of supportive parents and friends attended.

Peponi House Team 13 (Blue Indians) was this year's highest cash sponsor. The team raised a remarkable KES 575,000. In second place was Team 75 (Mudpigs) from Kenton College, with KES 219,000. Team 18 (Holy Walkamolies) from Peponi House and The French School emerged third, raising KES 170,000.

Each team must raise a minimum of KES 24,000 in sponsorship to qualify.

Once again, Pembroke House emerged the best check-point sponsor.

Since its inception, the Hog Charge has raised over KES 39 million for Rhino Ark's conservation projects in Mt. Kenya, Aberdare and Mau Eburu.



## CASINO NIGHT FOR CAR 15



Car 15, Team Kifaru Kwanza raised over KES 300,000 when they partnered with the Pink Apple Casino, based in Westlands and held a Charity Casino Night at the Purdy Arms in Karen on the 5th March 2016.

This was the first of the team's fund raising events, whereby the Pink Apple Casino set up a full casino in the main bar of the Purdy Arms, with Poker, Blackjack, Roulette Tables and four slot machines.

The event started off with a bang, with the support of one of the team's sponsors for the night, Bacardi who provided a full bar serving welcome cocktails to the casino guests.

The MC for the night, Sean Cardovillis had the challenge of explaining that there were no cash pay-outs on the tables and players were playing for one of two winning opportunities. They could play for the main prize worth KES 500,000, the winner being the player with the highest chips or they could take their chances in the raffle by redeeming coupons or chips for raffle tickets throughout the night.



## CAR 49 - 6-A-SIDE FUNDRAISING HOCKEY TOURNAMENT



This year was the 3rd edition of Car 49's annual fundraising hockey tournament. A number of teams returned to have another go at winning one of the trophies on offer. Once again, in the spirit of inclusivity, each team was required to field two players who were either female, under the age of fourteen or over the age of 50. A number of youngsters played and there were even a couple of friendly children's games over the course of the day.

The tournament itself was hotly contested as ever. Regular entrants Langata Lions, Justice League and Banda Bandits all fell just short with a new entrant, Simba Union ultimately lifting the Main Cup. Double Trouble deservedly took home the Plate whilst Choma were awarded the wooden spoon after being defeated in a play-off against the host side.

The day was a resounding success and approximately KES 180,000/- was raised towards Car 49's sponsorship pledge for this year's Rhino Charge. The tournament is now established as an annual event and would love to have you involved. The team also hosts an annual football and netball tournament.

# WILD CHARGE EVENT FOR CAR 6

While most women prefer red roses and romantic gestures on Valentines day, this February a whole new breed of women chose to take charge and go WILD at the Aberdare Hills Golf Resort instead. The event, (THE WILD CHARGE!), guaranteed to get the ladies out of their high heels and dresses and into their trainers and cargo pants, this event brought out the spirit, strength, will and very often the sheer determination to succeed without taking no for an answer from our fair maidens.

Held on the 12th and 13th of February 2016 in what can only be described as magnificent settings in the heart of Naivasha, the Aberdare Hills Golf Resort provided the backdrop for fun, adventure and some very talented driving! The wild charge, the brainchild of Manee Choda is an event similar to the popularized Rhino Charge but for the Ladies only. This event is for and all about the Women!

Thirteen teams made up of five to six members per team competed for the coveted title during this weekend. And compete they did!

Charging through bush, wading through streams & maneuvering vehicles through tricky courses the women proved they were a real match to their men when it came to driving. Their passion, sense of adventure, ability to take calculated risks and sheer talent was simply contagious! The event took an International hue and drew women from afar as San Diego, Mexico and the UK to compete with our exceptionally talented Kenyan Ladies.

This event was a combination of Rhino Charge, Rally Raid and Quattro Charge style sections. The competitors needed to have good driving skills, knowledge of how to use a GPS and how to read tulip diagrams.

The Wild Charge proved yet again that women have come a long way. This event garnered both young and old and pushed them to their limits testing their endurance, challenging their skill set and ability to work together as a team in the most precarious circumstances – and they all came out on top, winners every single one of them, wild to the core, ready to charge! Men, you better watch out!

| <p>There were two classes Modified vehicles and Unmodified vehicles.</p> <p>The Modified category and Overall winners: 13 Shades of Grey (Jasmeer Choda).</p> <ul style="list-style-type: none"> <li>• Unmodified category winners and Third overall were Hatarious Chargers (Smita Mehta).</li> <li>• The other awards were Spirit of the Charge which went to Smooth Operators (Anita Ghai) and Best Placed Overseas Entry which went to The Horny Mexicans (Maria Thapar)</li> </ul> | OVERALL (COMBINATION OF UNMODIFIED & MODIFIED CLASS) |                     |       |          |
|-----------------------------------------------------------------------------------------------------------------------------------------------------------------------------------------------------------------------------------------------------------------------------------------------------------------------------------------------------------------------------------------------------------------------------------------------------------------------------------------|------------------------------------------------------|---------------------|-------|----------|
|                                                                                                                                                                                                                                                                                                                                                                                                                                                                                         | TEAM NAME                                            | VEHICLE CLASS       | TOTAL | POSITION |
|                                                                                                                                                                                                                                                                                                                                                                                                                                                                                         | 13 Shades of Grey / Jazz Choda / Car No.13           | MODIFIED (WINNER)   | 1178  | 1        |
|                                                                                                                                                                                                                                                                                                                                                                                                                                                                                         | Horny Mexicans / Maria / Car No.6                    | MODIFIED            | 1566  | 2        |
|                                                                                                                                                                                                                                                                                                                                                                                                                                                                                         | Hatarious Chargers / Smita Mehta / Car No.3          | UNMODIFIED (WINNER) | 1583  | 3        |
|                                                                                                                                                                                                                                                                                                                                                                                                                                                                                         | Panvir Bhurji / Car No.1                             | UNMODIFIED          | 2303  | 4        |
|                                                                                                                                                                                                                                                                                                                                                                                                                                                                                         | Off road Divas / Sejal Patel / Car No.11             | MODIFIED            | 2508  | 5        |
|                                                                                                                                                                                                                                                                                                                                                                                                                                                                                         | Team Toyota / Chantelle / Car No.15                  | UNMODIFIED          | 2818  | 6        |
|                                                                                                                                                                                                                                                                                                                                                                                                                                                                                         | Car No.9                                             | UNMODIFIED          | 3540  | 7        |
|                                                                                                                                                                                                                                                                                                                                                                                                                                                                                         | BRCK Chicks / Nivi / Car No.14                       | UNMODIFIED          | 3898  | 8        |
|                                                                                                                                                                                                                                                                                                                                                                                                                                                                                         | Team Toyota / Car No.16                              | UNMODIFIED          | 5068  | 9        |
|                                                                                                                                                                                                                                                                                                                                                                                                                                                                                         | Smooth Operators / Anita Ghai / Car No.7             | MODIFIED            | 5133  | 10       |





# RHINO CHARGE PRE-EVENT BRIEFING TAKES PLACE AT BRAEBURN



The 2016 Rhino Charge Pre-Event Briefing took place on 7th May at Braeburn School, on Gitanga Road, in Lavington.

Charge entrants were required to attend or have a representation of at least one member of their team. The event is a social as well as informational event and teams were encouraged to attend. Guard Post officers, and sponsors were also represented.

They were briefed on:

- An update on Rhino Ark activities by the Executive Director, Christian Lambrechts
- Registration of all persons accessing the Rhino Charge; this is to be done through the online portal
- Commencement point of route notes to venue; this will begin at Narok
- General rules and regulations; this included:
  - i. collection of litter
  - ii. speed limit of driving (40kph)
  - iii. noise pollution
  - iv. camping arrangements

The Briefing also provided an opportunity to:

- Collect the Medical Kit from the Medical Desk. Chargers, Officials and Sponsors were able to renew their membership with AMREF at the discounted rate (KES 1,000 per annum) as opposed to the normal individual rate of KES 2,500 per annum ;
- Submit any sponsorship collected to date, along with the mandatory minimum advance sponsorship required at this time, as per the RC 2016 Rules & Regulations;
- Collect the Rhino Charge competitor bag from the Sponsorship Desk and purchase a GPS antenna and a box to contain the GPS;
- Register with Rivercross Tracking Ltd (our results partners) Chargers are required to take their vehicles to their premises in order to get the device fitted at a suitable time before the Rhino Charge. An independent power supply is mandatory and Chargers will be required to provide this at the time of installation too;
- Submit as many Raffle ticket stubs as possible and return any books not required. Raffle ticket books will also be available for collection should you require more;
- Highlands Mineral Water Co. was well represented and took orders for bottled drinking water to be collected on arrival at the venue;
- The Iceman was also represented and took in advance orders.



# RHINO ARK NEWS

## PONTIFICAL BLESSING OF THREE WILDLIFE FENCING POLES

On 27th November 2015, Pope Francis blessed three wildlife fencing poles made from recycled plastic. The poles are means to bring harmony between human and nature, in particular forests and wildlife. This is in line with the Pope's encyclical letter "Laudato Si" which lays emphasis on conservation and protection of the earth "our common home".

The purpose of seeking a blessing for the recycled plastic poles is to revitalize mobilization and sensitization of the forest-adjacent communities towards the conservation of Kenya's montane forests and the electric fences surrounding them.

The three blessed wildlife fencing poles will be placed in three separate sites: Mt. Kenya, Aberdare and the Mau Forests Complex. Preparation of the Mt. Kenya site, near Gathiuru Forest Station, is well underway. A State commissioning of each site is envisaged. Commissioning ceremonies are expected to play a significant role of (i) appreciating the pontifical blessings, (ii) initiating partnership collaboration between the national and county governments, the Church and other non state actors in the mobilization resources towards conservation, and (iii) engaging the clergy in disseminating messages on the conservation of the environment in general and Kenya's water towers in particular.



Photo by: L'Osservatore Romano

## NEW TRUSTEE JOINS RHINO ARK BOARD



For many years, Peter Kimathi Kinyua has been involved in conservation in Kenya. He is an Honorary Warden of the Kenya Wildlife Service and a member of the Board of the Kenya Wildlife Service, where he is the Chairman of the Finance Committee. Peter is also an active participant of the Rhino Charge. Over the past 15 years, his team, Car 23, has raised over KES 23 million towards conservation. Last year, his team received an award for being the second highest sponsor.

Peter is a coffee trader with over twenty-five years of experience and a qualified coffee liquorer. He has served on various boards, including the Coffee Board of Kenya and the Kenya Coffee Traders Association. He previously worked at Lonray Inc. in New York Trading Coffee, and in the insurance sector in Kenya.

Peter was newly appointed as the Chairman of Kenya Forest Service effective 10th March, 2016.

Peter obtained a Bachelor of Arts and a Bachelor of Science degree from Salve Regina University in 1986.

**PATRONS:**

LORD ABERDARE DL.

DR. DAVID WESTERN

DR. SALLY KOSGEI

DR. DAME DAPHNE SHELDRICK

JONATHAN SCOTT

CHARLES NJONJO

**US TRUSTEES:**

SHEENA BLISS,

GEORGE GRIFFIN,

ANDREW FRITZ

**UK TRUSTEES:**

GUY TRITTON, SIR KIT KABERRY, JOHN BOWDEN,

NICHOLAS KUHLE, JOHN EDWARDS, PATRICK ORR

**KENYA TRUSTEES:**

ISAAC AWUONDO, JONNY HAVELOCK,

ROSE KIMOTHU, DR. PEREZ OLINDO,

DR. W.W. JORDAN, OBE, ALAN MCKITTRICK,

BRIAN HAWORTH, MICHAEL TURNER,

ISABELLA OCHOLA-WILSON

PETER KINYUA

# THANK YOU!

Rhino Ark wishes to thank the following people and companies who have provided services or specific donations in cash or kind to Rhino Ark.

■ **AutoXpress**

Donation of tyres to Rhino Ark's fleet of 18 vehicles - a total sum of KES 2.5m

■ **KWS**

RA Offices

■ **Gallagher**

Fence Monitoring System

■ **African Fund for Endangered Wildlife**

Support to the conservation of the bongos

■ **Finlays**

Support to the conservation of the bongos

■ **Rare Species Conservatory Foundation**

Support to the conservation of the bongos

■ **Upper Tana Natural Resources Management Project**

Support to Mt. Kenya Electric Fence

■ **Mr. Kelley**

Support to the conservation of the bongos

■ **ChallengeAid**

Education programme around the Aberdare Fence

■ **MPESA Foundation:**

Schools' tree nurseries

## Order your copy of:

- Environmental, social and economic assessment of the fencing of the Aberdare Conservation Area. Available for KES 3,000 only.
- Rhino Ark Profile.
- 2015 Spirit of the Charge film in DVD. Available at KES 1,000 only.
- 2016 Rhino Charge Calendar for KES 1,000 only.

Act now!...

help us to continue our work

**Rhino Ark Kenya Charitable Trust**

KWS Headquarters, Langata Road  
P.O. Box 181 Uhuru Gardens, 00517 Nairobi, Kenya  
Tel: +254 (0)20 2136010, +254 (0)20 2136011  
Mobiles: +254 (0)733-632460, +254 (0)724 604233  
Email: info@rhinoark.or.ke  
Website: www.rhinoark.org / www.rhinocharge.co.ke

**Rhino Ark (UK) Charity No. 1047083**

Mr. Guy Tritton, Chairman  
c/o Hogarth Chambers,  
5 New Square, London WC2A 3RJ  
Tel: +44 (207) 421 2833, Fax: +44 (207) 404 0505  
Email: guytriton@hogarthchambers.com, guytriton@virgin.net  
Website: www.rhinoark.org

Website Donations: justgiving.com/charity/rhinoark

**Rhino Ark (US)**

A registered US Charity with IRC 501 (c) 3 Status  
Ms. Sheena Bliss  
P.O. Box 46250 Madison, WI 53744-6250  
Tel: +1 608 4423 536, Fax: +1 608 4425 264  
Email: sheena@wildlifedefenseusa.org  
www.wildlifedefenseusa.org

Website Donations:  
Firstgiving.com/Rhino Ark Kenya Charitable Trust Inc.  
Banking Details: US Bank, Gamon Place, Madison WI 53719

**Please make cheques payable to:**



THE RHINO ARK KENYA CHARITABLE TRUST  
KWS Headquarters,  
P.O. Box 181 – 00517, Uhuru Gardens, Nairobi, Kenya  
Landlines: +254 (0) 20 213 6010 / 213 6011,  
Mobiles: +254 (0) 733 632 460, +254 (0) 724 604 233  
Email: info@rhinoark.or.ke  
websites: www.rhinoark.org / www.rhinocharge.co.ke

Your donations of **USD 200 or KES 20,000** will maintain **200 meters** of fence

## FRIENDS OF RHINO ARK

**ACT NOW AND HELP US TO CONTINUE OUR VITAL WORK**

I/We: .....

of.....

.....

**Please tick your selection and fill in where applicable:**

We wish to receive ARKive, the bi-annual newsletter, and enclose a cheque/Postal Order for KES 1,000 or US\$ 10.

We wish to make a donation in the form of cheque/Postal order for 2016 (KES/US\$).

We wish to complete a Standing Order / Deed of Covenant - please send an application form.



# CHECK OUT THE NEW CITIMAX 100+ IT'S THE **BUSINESS**

Designed and engineered by KVM in Thika, the new Citimax 100+ is the latest in our line of engineered bus bodies. With seating and standing space for 100+ passengers, this modern vehicle has an impressive capacity of up to eight *matatus*! Since its inception in 2003, the Bus Body Building Facility at KVM has grown from strength to strength producing the best quality bodies locally. We build minibuses as well as medium and large buses with carrying capacities ranging from 29-67 seats. All builds are fully bespoke and conform to KEBS requirements. We build and stock brand new buses for sale on chassis including MAN, Scania, Eicher, UD trucks, Hino, Tata, Mitsubishi, Isuzu, Hyundai and Daimler.

- Mini buses • Medium & large buses • Luxury buses
- Full customisation of entertainment systems, phone charging adaptors, reclining / adjustable seats and branding • Superior safety features
- Built for Africa • German and British Engineering • Watch what we do next!

Visit our sales office at CMC Nairobi or contact:

Kenya Vehicle Manufacturers Limited  
P. O. Box 1436, along Garissa Road, Thika 01000 Kenya  
Tel: +254 (20) 2343049 / 2357736 / 3540309 / 2406208-9  
Mobile: + 254 (733) 636091 / (733) 795988 / (722) 205168 / (714) 789422  
Fax: +254 (20) 2343070 Email: [kvm@kvm.co.ke](mailto:kvm@kvm.co.ke)  
[www.kvm.co.ke](http://www.kvm.co.ke)