

**SAVE THE WATERBERG RHINO**  
[WWW.WATERBERGRHINO.COM](http://WWW.WATERBERGRHINO.COM)



*Equipment & Security*

*Training & Support*

*Education & Community projects*

*Information & Communication*

## INTRODUCTION

# Save the Waterberg Rhino

*“Save the Waterberg Rhino was started in November 2012 with one mission; to help raise awareness and support the war against rhino poaching. Save the Waterberg Rhino enjoys a close working relationship with many recognised role players, their opinion and experience proving invaluable when identifying projects and allocating funds. Supporting Rhino owners, Private Reserves, South African National Parks and General security in the biosphere is a primary objective and as such, the majority of our resources are channelled in this direction.”*

# A Waterberg Biosphere Reserve Project

UNESCO Man and the Biosphere

Conservation

Sustainable development

Logistic support

*Shortly after the project was founded it was decided that STWR would officially become a project of the Waterberg Biosphere Reserve (WBR). The aims and objectives of STWR aligns with the aims and objectives of the WBR; endangered species conservation, awareness, education and social upliftment. In addition the project could fast-track its position as a Rhino Conservation Project through the use of the Non Profit and Public Beneficiary status of the WBR, so that the project could focus on fundraising and setting up the project and start protecting rhinos. This has also allowed for financial and capacity support to STWR from the WBR. As a recognised organisation that is monitored and evaluated both internationally and nationally the WBR also lends creditability to STWR in a time where many dishonest rhino charities have emerged.*



#### Postal Address

Waterberg Biosphere Reserve  
Save the Waterberg Rhino  
PO Box 518  
Vaalwater  
0530

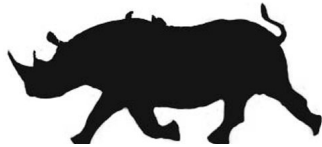
#### Organizational Information

Waterberg Biosphere Reserve  
Save the Waterberg Rhino Project  
Registration No: 2006/019965/08  
PBO No. 930031587  
Non Profit No. 074-684-NPO  
VAT No. 4440253799

## MISSION STATEMENT

"The protection and conservation of rhinos in the Waterberg."

## OUR AIMS



### 1. Fundraising

To fundraise in order to achieve the mission and all other objectives.

### 2. Security

To enhance general security in the Waterberg, whereby rhino security and security of communities are increased.

### 3. Awareness

To promote awareness locally and internationally pertaining to the rhino poaching crisis and the STWR efforts to assist with counteracting the onslaught in the Waterberg.

### 4. Social upliftment

To facilitate employment opportunities, through rhino security and tourism, and thereby enhancing sustainable livelihoods.

### 5. Training

To facilitate training that is in support of security, anti-poaching and rhino conservation.

### 6. Environmental education

To support environmental education opportunities that relate to rhino protection and conservation.





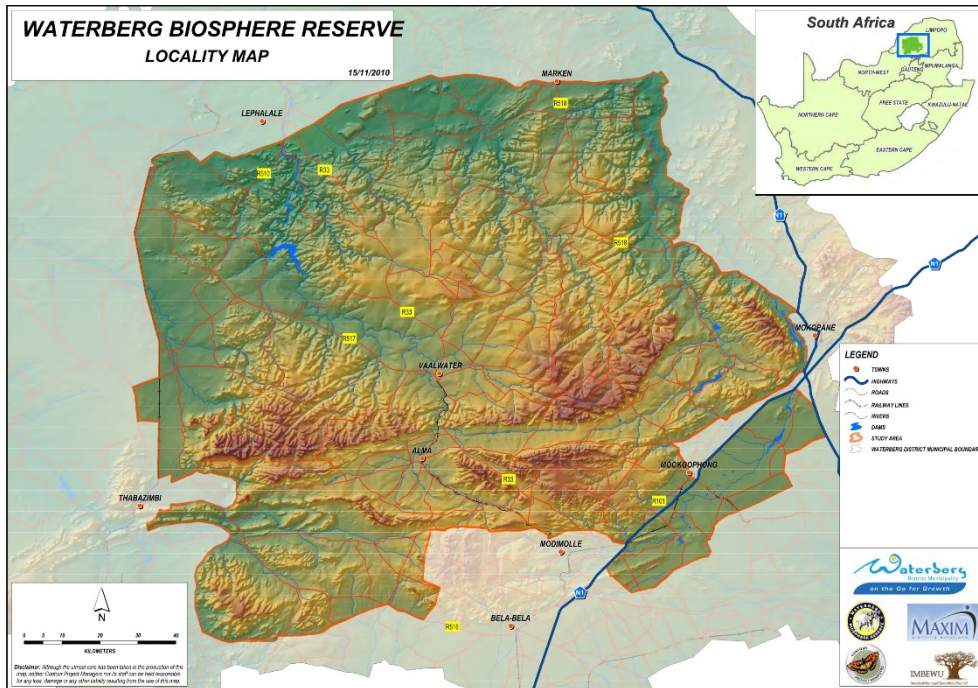
MAKING A REAL DIFFERENCE

## RHINO CONSERVATION DREAM

SAVE the WATERBERG RHINO Project is set within the contiguous Waterberg area, which is approximately 1.7 million hectares, within Limpopo Province. This geographical area, which is sparsely populated and has little infrastructure in regards to roads and transport links offers an opportunity of cost effective rhino protection advertising, security monitoring and centralised operational unit which is key to both deterring poachers coming to the area in the first place (other areas will be seen as easier targets) as well as rapid responses to poaching scenes which will further act as a deterrent, if there is a good chance the poacher could get caught.

The Waterberg habitat is suitable for both white and black rhino and historically it is an important place for the recovery of both species. It is therefore critical that rhinos remain within this area and not seen as a liability by private land owners who would rather sell their rhino than face the full costs of keeping them alive. We endeavour to help rhino owners keep rhino in the Waterberg.

# THE WATERBERG THE LAST FRONTIER



## OUR RHINO POPULATION

The Waterberg is home to the second largest concentration of rhino outside of the Kruger National Park and we support a herd of over 2000 rhino in the Waterberg. Both white and black rhino occurs in reserves across the Waterberg.

Our members spend in excess of R80 million a year on running their reserves and with nearly half of that being spent on rhino security and anti-poaching, the cost of securing these magnificent animals is astronomical.

Save the Waterberg Rhino is in the forefront of trying to save this last frontier for the rhino. With more than 10% of South Africa's rhino in the Waterberg and our national parks under serious attack by poachers, we believe that this population is vital to the survival of the species.

## ROLE PLAYERS AND STAKE HOLDERS

Save the Waterberg Rhino is registered with the Department of Environmental Affairs and was a key role player in setting up the National strategy on rhino NGO's.

We are the only NGO project registered with Department of environmental affairs in Limpopo fighting rhino poaching and the only one working with South African National Parks.

Supporting private and national reserves, STWR is channelling funds to where it makes a tangible difference in rhino protection and conservation.

### Rhino poaching statistics

South Africa	2011	2012	2013	2014	2015
KNP (SANParks)	252	425	606	827	29
MNP (SANParks)	6	3	3	0	0
MAP (SANParks)	0	0	0	1	0
Gauteng	9	1	8	5	0
Limpopo	74	59	114	110	12
Mpumalanga	31	28	92	83	2
North West	21	77	87	65	0
Eastern Cape	11	7	5	15	0
Free State	4	0	4	4	0
Kwa-Zulu Natal	34	66	85	99	6
Western Cape	6	2	0	1	0
Northern Cape	0	0	0	5	0
<b>Total</b>	<b>448</b>	<b>668</b>	<b>1004</b>	<b>1215</b>	<b>49</b>

### Rhino poaching arrests statistics

South Africa - Arrests	2015	2014	2013	2012	2011
KNP (SANParks)	9	174	133	73	82
MNP (SANParks)	0	0	0	0	0
MAP (SANParks)	0	1	0	0	0
Gauteng	0	21	10	26	16
Mpumalanga	4	45	34	66	73
Eastern Cape	0	2	0	0	2
Limpopo	0	60	70	34	34
North West	3	14	26	32	21
Free State	0	0	7	6	0
KwaZulu-Natal	1	68	63	20	4
Western Cape	0	1	0	0	0
Northern Cape	0	0	0	1	0
<b>Total</b>	<b>17</b>	<b>386</b>	<b>343</b>	<b>267</b>	<b>232</b>

RECOGNIZED COMMUNITY DRIVEN PROJECT  
THE PERFECT PARTNERS



*As a project of the Waterberg Biosphere Reserve all financial statements will be audited by the Biosphere's auditors and be available for members of Save the Waterberg Rhino. All funds raised will be accounted for and members and friends of Save the Waterberg Rhino will at all times be advised how funds are allocated to projects etc. The Waterberg Biosphere Reserve is a Section 21 company and – since 7 January 2010 – a registered Non-Profit Organisation (NPO nr 074-684) that works in conjunction with local and international partners.*

*We are also an official Stoprhinopoaching.com project and work closely with them to share information and pursue the aims and mission of Save the Waterberg Rhino to ensure the survival of rhino. [www.stoprhinopoaching.com](http://www.stoprhinopoaching.com)*

*Save the Waterberg Rhino was initiated by local community members, are driven and supported by the community and generous sponsors from business and kind hearted conservation minded individuals. We are not an animal activist group and channel funding into projects that make a real difference for the protection and conservation of rhinos in the Waterberg.*



As part of our information and awareness campaign we have a website and Facebook page to keep members and friends informed of the project, poaching incidents and statistics as well as the latest information received regarding poachers and crime in the area.

Please feel free to like us on Facebook or visit our website for current up to date information:



<http://www.facebook.com/SaveTheWaterbergRhino>

Visit our website: [www.waterbergrhino.com](http://www.waterbergrhino.com)

## WHAT HAVE WE DONE FUNDRAISING

Save the Waterberg Rhino is a registered NGO and PBO. We are dependant on funding and donations from the public and receive no government grants.

As a community driven project we have managed to get donations from local community and businesses to get the project off the ground. Nearly two years down the line we have managed to raise funds through a variety of projects.

We have raised funds through our website and social media, the sale of merchandise like our Save the Waterberg Rhino Bushstraps and t-shirts as well as the following projects.

- Black tie evening with fundraising auction in November 2013 with plans to host another in November 2015.
- 2013 UK fundraiser
- 2014 UK fundraiser hosted by patron of STWR, Mark Knopfler
- Donations received through our donation boxes placed at lodges and businesses in the Waterberg.
- Monthly supporters that join as friends of STWR or make donations after we do awareness talks at game reserves and lodges.
- Co-sponsorship partners
- Corporate donations
- Equipment donations

### *We have managed to procure the following:*

- Roadblock and response trailer
- High tech equipment like nightvision and gps
- 2 way Radios – dedicated rhino emergency channel
- High vis jackets for security groups for roadblocks with the South African Police Service.
- Binoculars for patrol groups
- Search lights for patrols
- Bulletproof jackets for anti-poaching – security units
- Surface to air radio for communicating with aerial patrol chopper

- K-9 Unit including rhino horn sniffer dog and dog handler to deploy in the Waterberg
- Vehicle for the K-9 unit
- Funding for strategic security planning for Waterberg area
- Funding to train 30 Rhino monitors in 2014
- Funding to train 40 Rhino monitors in 2014 – 2015
- We have sponsored Close Combat Training and Trauma first-aid courses
- Printing and distribution of awareness flyers, stickers, posters and banners

### *We are in the process of raising funds for the following projects;*

- Boom gates and guard huts to secure large areas and restrict vehicle traffic
- CCTV – to monitor all major roads with close circuit television and link this to an intelligent data analysis program.
- More equipment for anti-poaching units
- Aircraft to do aerial patrols and respond to threat situations
- Operational room with 24 hour monitoring and reporting
- Boom gates (decided within blocks)
- Community scouts and game guards (trained by Waterberg Biosphere Reserve)
- Education Programme
- Security signage for the area
- Rhino horn treatment
- Tracking devices for rhinos
- Binoculars
- Night vision
- Thermal vision
- Hi Tech solutions
- Bullet proof vests
- Crime scene equipment
- Uniforms and kit for scouts/SIG members
- Anti-poaching scouts for rhino protection
- Metal detector
- Camera traps
- Tracker dogs for follow-up reaction
- Vehicles for response teams
- Training for Anti-Poaching UNITS
- Management courses for rhino owners
- Information HUB for members
- Setup a Rhino and Crime Hotline
- Supporting the Clive Walker rhino museum.

***Should you or a corporate sponsor be able to assist with any of the specialized equipment, please contact us on :  
[info@waterbergrhino.com](mailto:info@waterbergrhino.com)***



## WHAT HAVE WE DONE SECURITY

Save the Waterberg Rhino strives to support local security groups and service providers with information, equipment, training and logistical support.

We have supported groups with equipment and training. Anti-poaching training and equipment like thermal and night vision units are very expensive and rangers and volunteers alike are in desperate need of kit, training and equipment.

Through the Waterberg Biosphere reserve we have trained and are in the process of training more rhino monitors to be deployed in the Waterberg.

We have through the EWT (Endangered Wildlife trust) procured the 5<sup>th</sup> only rhino horn sniffer dog in SA, and the vehicle for the K-9 response unit has been sponsored by STWR.

Vito, our sniffer dog is looking for a sponsor to cover his food. We are also looking for a sponsor for the dog handlers salary.



We have installed signage as a deterrent and awareness project on nearly 300km of roads.

We have sponsored close combat training and trauma first aid courses.

We have already supplied the following to Anti – poaching and rhino security groups.

- Camera traps
- Night vision
- Roadblock trailer and kit
- 2-way Radios
- Bulletproof jackets
- Crime scene equipment
- GPS
- Binoculars
- Torches and patrol lights
- Training
- Crime intelligence

Through STWR we have secured a one year fuel sponsor from TOTAL Vaalwater for ground teams doing patrols and roadblocks.

STWR have procured a roadblock response trailer to assist the SAPS and local security groups with their work. The trailer is fully kitted with generator, floodlights, roadblock signage and equipment to have maximum impact and give capacity to do the job.

Working with SAPS, this trailer has been deployed in the Waterberg and has made a huge impact on fighting rhino poaching and crime in general.

We aim to have CCTV cameras installed on all major routes in and out of the area to help monitor movement and criminal activity.

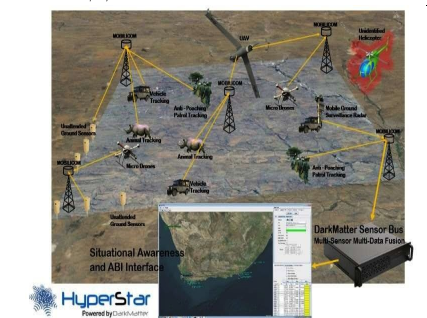
Phase 1 of the project aims to cover nearly 300km of roads, this coupled with intelligent data analysis will give early warning signals to anomalies triggered by the system.

An operational headquarters will be able set up to analyse and respond to any threat or suspicious activity in the area.

STWR has donated vital security equipment and will continue supporting all legitimate rhino anti-poaching projects.



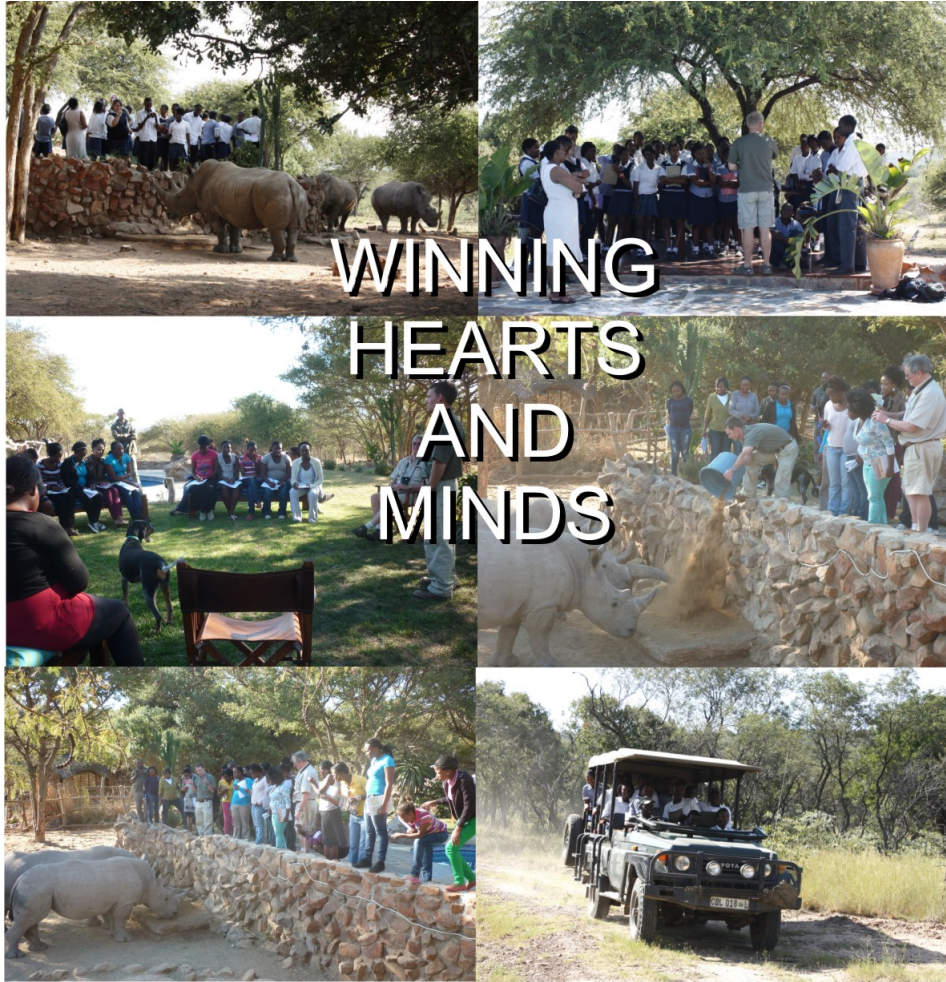
Resource Deployment Scenario



Rhino projects requiring funding are welcome to apply to STWR.







WINNING  
HEARTS  
AND  
MINDS



## GETTING THE WORD OUT AWARENESS

We have supported two world rhino days. Our volunteers were at all major road intersections in the Waterberg distributing literature and getting the word out.

We covered five towns and gave out huge numbers of brochures and bumper stickers.

We partnered with South African National Parks, rhino security providers, game reserves who all supplied volunteers to participate. This raised awareness showing that the Waterberg is truly united against rhino poaching.

Awareness is a never ending campaign that requires dedication and passion and we have both.

We visit local lodges that host international guests and try to give visitors an informative and realistic view of the rhino poaching crises.

We encourage them to return home with literature and posters to distribute internationally.

World renowned, rhino conservationist Clive Walker also joins and supports these talks, and is in the process of re-opening the Rhino Living Museum. STWR will support this museum and educational centre and aim to sponsor kids to visit this centre and learn about the importance of rhino conservation.

We are constantly getting the message out to the masses with our website and Facebook page, media, posters, pamphlets and keep donors and sponsors up to date with newsletters and e-mail campaigns.

## Social Upliftment

People and conservation

We have through training and short courses empowered local people to find employment in anti-poaching, conservation and tourism.

We encourage and support social upliftment projects that creates sustainable jobs and promotes conservation.

We want to employ a fulltime environmental educator to visit local schools in the Waterberg. To promote our campaign and educate kids regarding rhino conservation and protection.

Our members and supporters employ a few thousand people and continue to educate and improve lives and livelihoods.





**HORN TREATMENT SPONSORED BY STWR**



# TRAINING

## EMPOWERMENT & PROTECTION What have we done?

Having trained 30 anti-poaching rangers in 2013-2014 from the local community, we have just embarked on the second group of rhino monitors.

These projects are run through the Waterberg Biosphere and various stakeholders.

STWR has sponsored a close combat training course for local security interest groups as well as trauma first-aid courses for rangers and anti-poaching groups.

We provide a Rhino Hotline and educate rhino owners regarding rhino protection and standard operating procedures.

We are constantly attending courses and conferences regarding rhino conservation and protection.



# EDUCATION

## ENVIRONMENT & RHINO PROTECTION

Through our Biosphere interns, we have launched an environmental club in the local township to share our vision with the youth as they are our future conservationists.

We sponsor kids to visit local reserves and see rhinos in the wild, for most of them it is their visit to a reserve and their first encounter with a live rhino, for most this is a life changing experience.

Group by group we are enlisting more and more rhino warriors to help conserve these animals for future generations.

We do educational talks at lodges and game reserves, but would like to employ a full-time environmental educator to visit all the schools in the Waterberg and surround.

We envision a local educator that can speak to and excite kids about saving rhinos. Save the Waterberg Rhino aims to get a dedicated mini bus that is branded and fun to enable us to really get the message out to the masses.

*Winning the war against poaching, by winning the hearts and minds of the people.*



# STRUCTURE

## ENVIRONMENT AND RHINO PROTECTION

After the increase of poaching in the Waterberg area, community members got together and agreed to start the Save the Waterberg Rhino Project.

Recognizing the existing accredited role-players already making a huge difference, the need to make a direct tangible difference in the Waterberg area was our main aim.

Lodge owners, rhino owners, local businesses, relevant role-players and consultants all agreed that the project would need a permanent Project Coordinator to drive the project and keep the momentum.

Members agreed to pay a supporters fee to help cover the salaries of the project coordinator, admin and operations. This will ensure that funds raised go directly to the project and its aims and mission.



# THE KILLING CONTINUES THE BATTLE CONTINUES

Short description of the tasks done by the project coordinator and the admin team

- Communication between members and other relevant role-players.
- Information gathering and sharing, crime intelligence data analysis.
- Attending all relevant meetings regarding rhino and general security.
- Awareness: Membership development and data base maintenance.
- Website development and maintenance.
- Social media – Facebook page, printed media and newsletters.
- Marketing: To market the project to help raise awareness and support.
- Security: To liaise with national and provincial SAPS, security providers and community security interest groups to assist in coordinating their efforts and provide support.
- Fund raising: To raise funds to assist in reaching the project aims.
- Education: To give educational talks and presentations on the project and rhino conservation.
- General administration and logistics.

## STRUCTURE

### **Steering Committee Volunteers:**

Tess Baber: Founder

Kelly Abram: Biosphere Coordinator

Anton Walker: Conservation Advisor

Johan Taljard: South African National Parks– Marakele NP

Clive Walker: Ex-officio Advisor

### **Full Time Staff:**

Lychelle Swales: Fundraising and administration

## HOW CAN YOU HELP?

- Become a supporter
- Join as a friend of STWR  
Like us on Facebook
- Make a donation
- Sponsor equipment
- Become a strategic partner
- Help spread awareness about rhino poaching and our project

Should you be interested in joining or becoming a strategic partner, please e-mail us or visit our website for our online forms.

### **OUR BANKING DETAILS:**

**SA Donation**



Bank name: First National Bank (FNB)  
Account name: SAVE THE WATERBERG RHINO  
Account no: 62389265549  
Branch code: 258629  
Branch name: Vaalwater

### **International Donation**

Bank name: First National Bank (FNB)  
Account name: SAVE THE WATERBERG RHINO  
Account no: 62389265549  
Branch code: 260247  
Branch name: Modimolle  
Swift Code: FIRN ZA JJ XXX

## CONTACT INFORMATION

### ADDRESS:

WATERBERG BIOSPHERE RESERVE  
SAVE THE WATERBERG RHINO  
PO Box 518  
Vaalwater  
0530

### **Save the Waterberg Rhino**

Cell: +27 (0) 83 947 1203

### **Lychelle Swales | Fundraising**

Cell: +27 (0) 63 023 3026

### **Tessa Baber | Founder**

Cell: +27 (0) 83 681 8944

Website: [www.waterbergrhino.com](http://www.waterbergrhino.com)

Email: [info@waterbergrhino.com](mailto:info@waterbergrhino.com)

Email: [media@waterbergrhino.com](mailto:media@waterbergrhino.com)