



# 2014

**RHINO PROTECTION UNIT (RPU)  
ACTIVITIES & PERFORMANCE REPORT  
BUKIT BARISAN SELATAN, WAY KAMBAS,  
UJUNG KULON - NP  
4th QUARTER REPORT  
1 OKTOBER – 31 DECEMBER 2014**



**REPORTED BY:  
ARIEF RUBIANTO  
M.WALADI ISNAN**

**COMPILED BY:  
YUSEP HARDIANA**

**REVIEWED BY:  
WIDODO S. RAMONO**

**DATE OF VERIFICATION:**

**Januari, 2015**



## **PROJECT TITLE : PROTECTION PROGRAM OF YAYASAN BADAK INDONESIA**

**Reporting Period:** October - December 2014

### **Name and Address of Grantee:**

1. International Rhino Foundation (IRF)  
Executive Director, International Rhino Foundation  
138 Strasburg Reservoir Road  
Strasburg, VA 22657  
Tel/fax: 540-465-9595  
Email: [s.ellis@rhinos-irf.org](mailto:s.ellis@rhinos-irf.org)

2. **WWF - Indonesia**  
Graha Simatupang Building  
  
Tower 2 Unit C 7th Floor  
  
Jln Letjen TB Simatupang Kav 38  
  
Jakarta Selatan

### **Authorship:**

Reporting provided by Sumatran Protection Manager (Mr. Arief Rubianto) and Javan Protection Manager (Mr. M. Waladi Isnan).

Material and information gathered from field reports and associated documents.

### **Executive Summary:**

The decline of Sumatran and Javan rhino have been in process for a long periode of time. The Javan rhino for example was eliminated from Malaysia in the 1930's. Meanwhile, following the Sumatran rhino PHVA (1993) indicated that the decline of Sumatran rhino probably 50% during the last decades. The total population of Sumatran rhino in Indonesia during the previous decades was estimated 215 – 319 and at the present is estimated not more then 200 animals, it will be extinct for the next decade if there is no appropriate, bolt, and serious management. (Strategy and Action Plan for the Conservation of Rhinos in Indonesia 2007 – 2017, while SRCS, Singapore 2013 suggested not more than 100). Rhino decline in South East Asia is due to a combination of reduction in habitat and over exploitation of rhino (most recently by poachers after the horn). At this time, wildlife poaching pressure continues to be high in Indonesia, there is a strong need of this country to continue emphasize anti-poaching activities. In respond to this the rhino protection

program of Yayasan Badak Indonesia (YABI) has been activated to answer the need. Rhinoceros is subjected to poaching pressure both from hunters and from trappers, they use fire arms, wire snares, and other traps that aim to kill animals. The method employed in poaching prevention are primarily in forms of field patrols to search for traps and other signs of poaching attempt, to destroy these traps, and to collect evidence to identify and apprehend the suspects involved. While in support to the field patrol, intelligence activities is operated to assist in the apprehension of poachers and identify the routes of illegal trade of protected animal parts (horn, skin, hooves etc.).

The Indonesian Rhino Protection Program of YABI integrates partners of governmental and non-governmental namely Directorate General of Forest Protection and Nature Conservation of the Ministry of Forestry, International Rhino Foundation and World Wide Fund for Nature as well as local villagers . The program entails series of approaches that include: wild population protection by intensive patrolling of areas to detect traps and arrest intruders, more intensive and extensive surveys and monitor of the rhino population, and intelligence operations to assist in the apprehension of poachers, and identify of routes used for illegal trade, and establishment of rhino database system using the Geographic Information System (GIS) techniques, and to a limited scale conducting community development to some villages fringing the national parks.

The Indonesian Rhino Conservation Program (that was originated from GEF Project and that is now has merged into YABI) and this Rhino Protection Program of YABI fully understood that the program is very costly. But, it is important to bring an understanding that the operation of Rhino Protection Units (RPUs) backed-up by Intelligence and Law Enforcement Unit (ILEU) is the most effective measure in protection of rhinos in the wild. Therefore it is important in securing a simultaneously funding plan for sustainability of rhino conservation program.

## **Introduction**

The decline of both species of rhinoceros, Sumatran and Javan, has been in process for a long time. The population of Sumatran rhino have been reduced to 50% in the last decade and will be extinct for the next decade if there are no serious and appropriate management of rhino. Its decline in range and number in Sumatra is attributed chiefly to fragmentation of its habitat through indiscriminate forest clearance and to poaching, stimulated by the illegal trade in horns, hides and hooves, and other parts of rhino's body.

A population and Habitat Analysis conducted in November 1993 in conjunction with the IUCN SSC and its Conservation Breeding Specialist Group (CBSG) and the AsRSG revealed a significant decline in the numbers of Sumatran rhino in Indonesia. The estimates that emerged from the new data and more rigorous assessment was around 200 (215 – 319). Meanwhile, the previous estimate had been 420 – 875. The GEF project RPU YABI estimates that until June 1998 the presence the population of Sumatran rhino in Kerinci Seblat

National Park 27 – 32, Bukit Barisan Selatan National Park 40 - 50, and Way Kambas National Park 24 – 30. Meanwhile SRCS meeting in Singapore 2013 suggested that number of Sumatran rhino is not more than 100 animals.

Although the Javan rhino population in Ujung Kulon National Park seems to be holding at about 50 –60, yet the threat of poaching remains.. The loss of rhino has become a matter of global concern which also is for Indonesia. The lost of at least one rhino due to poaching in Ujung Kulon (1994), and the suspect has been identified but no prosecution has in progress at that time remains as an alarm to us to be always in alert . Although rhino poaching evidence and attempt was not found during this quarter, poaching of other wildlife such as the presence of mouse deer traps, bird traps, as well as poaching for marine resources (crabs, langusts, clams, etc.) and usage of poison in poaching fish were still occurring.

Saving the remaining rhino population needs further alternatives. There should be series of efforts to protect the remaining population by activating rhino patrol and strengthening its anti-poaching activities, until poacher activity and habitat destruction is reduced to the point of elimination.

The Protection Programs of YABI provide protection from poaching and habitat disturbance for viable nucleus populations of Sumatran and Javan Rhinos through the establishment and operation of Rhino Protection Units, and supporting management, coordination and supervisory structures. Formerly, YABI had been operating 17 Rhino Protection Units (RPU) until middle of 2009, while due to shortage of funding in this quarter, only 16 RPUs continued their operation in and surrounding areas of Bukit Barisan Selatan (7 RPUs), Way Kambas (5 RPUs) and Ujung Kulon National Parks(4 RPUs) .

## **Objectives**

The objective of the Program is to contribute to the long-term viable conservation and management of Indonesian rhino (the Javan rhino – *Rhinoceros sondaicus*, and the Sumatran rhino – *Dicerorhinus sumatrensis*) and their habitats in Java and Sumatra.

The Indonesian Rhino Protection Program of YABI is it self addressed to support the capabilities of the Directorate General of Protection and Nature Conservation with its associated wildlife agencies in arresting and reversing the decline of rhinoceros due to poacher activities and habitat disturbances toward the national and global goal of recovery of viable populations of rhino species in Indonesia.

## Output

1. Establishment and operate of at least 16 Rhino Protection Units (RPU) in Sumatra and Java.
2. Establishment and operate Intelligence and Law Enforcement Unit to support law enforcement process which is undertaken by RPU and Park authority or proceed to identify information of threats from ILEU's informants for further judicial process. .
3. Community facilitation for better livelihood and to reduce threats from surrounding community.

-----

## Progress

The Rhino Protection Program of YABI provides protection from poaching and habitat disturbance for viable nucleus populations of Sumatran and Javan Rhinos through the establishment and operation of Rhino Protection Units (RPUs), and supporting management, coordination and supervisory structures. The outcome of operations of 7 RPUs in Bukit Barisan Selatan National Park (BBS NP), 5 RPUs in Way Kambas National Park (WK NP) and 4 RPUs in Ujung Kulon National (UK NP) is reported as seen in Annex 1. (*RPUs Activities Report Periode October – December 2013.*), as per attached.

The achievements of the Protection Program for this period is described below in *Annex 1*.

Records on illegal killing of animal and other forest offences detected by both RPUs (BBS, WK and UK) and ILEU is shown in *Annex 2*. The field days per month of RPU's personnel is shown in Annex-1.

Intelligence and Law Enforcement Unit (ILEU) has been operating to identify the threats which come from surrounding people or outside of the Park; its operations also covers identifying possible community development facilitations for raising local's alternative income in order to reduce threats to the park and its rhinos. There are only 3 personnels in this unit that have to work in collaboration with informants, RPUs, Park Rangers and the Police, in the case that they have a confirmed case and that have to apprehend the suspect/s for further law enforcement efforts. Although ILEU's is based in BBS and surroundings, they are available to assist ILEU operations in both WK and UK NPs.

ILEU's findings of their activities as well as its activities together with RPU BBS findings, is reported in Annex-2,

## Conclusions and Recommendations

In this period, the average number of field days per month of every person RPU in all areas was lower than the Program required of 20 days/month.

During this period, RPU BBS has operated mostly to patrol along Park border, since the threat coming from human activities from surrounding area recently seem raising. There is a change in some key leaders in BBS that requires time to coordination. They only to achieved 12,65 field days per person per month as the result of their 28 patrol / survey (of their total 39 activities). The other activities were mostly involving their contribution in the multi stakeholder program which facilitated by BBS NP.

The number of working days less than 15 working days / person / month because they entered a long RPU personnel who become civil servants. Whereas if not combined, then the working day amounts to more than 17 days / person / month.

During their patrol along the Park border, RPU detected poaching activities and succeeded to detect deer poaching, illegal logging, bird poaching and some active encroachments.

This patrol/survey, which achieving 1.377 Km. A total of 28 cases of illegal activities were detected where 15 of those were illegal logging and encroachment, and no rhino poaching sign.



Figure-1. RPU BBSNP illegal logging and encroachment



Figure-2. RPU BBSNP Theft of birds and deer carcass evacuation

RPU WK has achieved 10,87 field-days per person per month as the result of their 30 patrol / survey (out of their total 30 activities) which achieving 1.335.70 Km patrol route, 7 location with signs of rhino were found and recorded, no direct sighting of the rhino.

A total 43 cases of illegal activities were detected, human activities for a very large were proven by of signs that left, by example (theft of birds, fish, encroachment, illegal logging, animal hunting deer, etc.)

The number of working days less than 15 working days / person / month because they entered a long RPU personnel who become civil servants. Whereas if not combined, then the working day amounts to more than 17 days / person / month.

During this period, the involvement of RPU of all areas were affected by the Park Rangers' activities that need to be supported which was resulted to a lower of field days of their patrol / survey. It should become a consideration for the next period arrangement with YABI's Regional Consultant (Head of National Park), who has the authority to synchronize the patrol between RPU and Park Rangers.

Team RPU attempt a fire extinguisher during the forest fires



Figure-3. RPUWKNP forest fires



RPU UK has achieved field-days 16.51 days per person per month as the result of their 10 patrol / survey as their total activities, which achieving 700.44 Km patrol route. 35 signs of rhinoceros that were found are: footprint, Wallow, feeding, rhino dung and other signs, and no direct meet me with rhino.

A total of 21 cases of illegal activities were detected. The major cases encountered were non mammals poaching (bird, fish/shrimps, Honey bee), in addition to the destruction of the fence netting of the JaRhiSCA southern region is still found. Discovered dead rhino in the form of bones, cause of death was by suspected disease because there was no sign or traces of poaching.



Figure-4. RPU-UKNP trap birds and destruction of netting fence JaRhiSCA southern region

Although RPU job is to actively maintain rhino security and no rhino trap could be found, but there are still many illegal activities suppress rhino protection efforts that we always worried.

RPU has found many rhino footprints in BBS, WK, UK in the year 2014 but could not be used to determine the number of rhino population in the area, the RPU can only know the distribution of rhino in a region.

In addition to the task Patrol / Survey, RPU also help the National Park to perform an operating activities under the joint command of the national park at any time if carried out, in order to maintain good relations with the national park. RPU always work in coordination with the Head of the National Park.





**YAYASAN BADAK INDONESIA - YABI**  
**Rhino Foundation of Indonesia – RFI**

**ANNEX 1**  
**QUARTERLY ACTIVITY**  
**AND PERFORMANCE REPORT**  
**01 October – 31 Desember 2014**  
**(Q4)**

**BUKIT BARISAN SELATAN**  
**NATIONAL PARK**

**Highlights :**

- Found 37 of rhino
- Found 28 cases of the disorder include: timber theft, encroachment of coffee plantations, rattan, resin, birds and deer
- Elephant skull with age of death of more than one year in the location Bamban sogol
- Training new members RPU In Sukaraja Atas Resort

## BASIC POPULATION PARAMETERS

Number of Footprints	Number of Locations with rhino signs					
	Footprints	Wallows	Feces	Feeding	Other Signs*	Direct Sighting
5	8	20	2	2	0	0

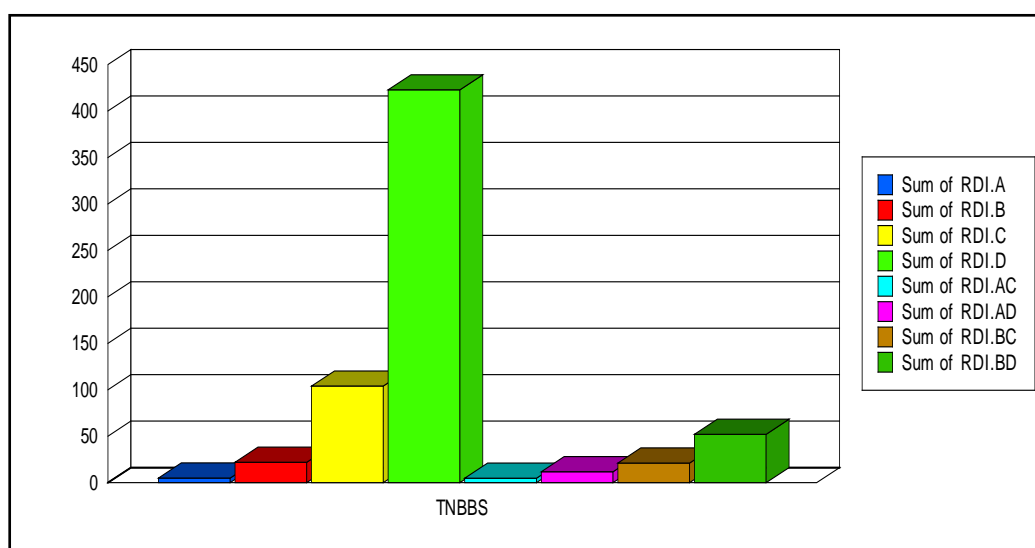
\* Include Urine, Scratches, Rubs.

During the 28 patrol / survey in this period, found signs of rhino as: footprint, Wallow, feed and rhino dung, no other signs and not face to face with a rhino.

## RHINO DENSITY INDICATORS

Rhino		RPU Field Presence		Density Indicators			
A	B	C	D	A/C	A/D	B/C	B/D
Number of print locations	Number of Rhino Signs*	Field Days**	Distance Walked** *	Rhino prints/ 100 days	Rhino prints/ 1000 km	Rhino signs/ 100 days	Rhino signs/ 1000 km
5	22	104	422.8	4.81	11.83	21.15	52.03

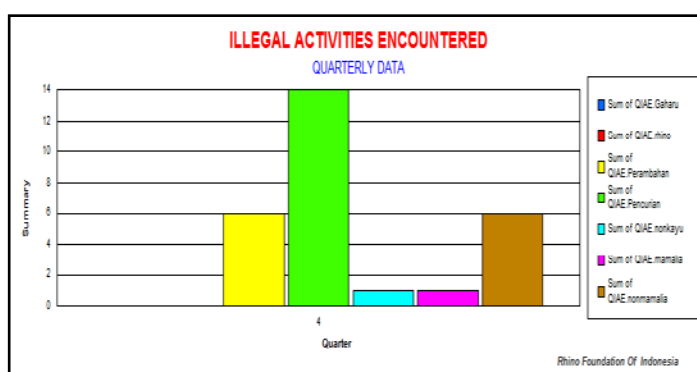
\* The total number of sign (excluding footprints) of rhino found. \*\* Total number of RPU group field days. (Footprints are not included, because the number provided in the table is the number of individual footprints and not the number of seprate tracks ).



## ILLEGAL ACTIVITIES ENCOUNTERED

Gaharu * Theft	Encroachment	Timber Theft	Forest Product Theft	Illegal Hunting		
				Rhino / Trap	Non Rhino (Mammals)	Other
0	6	14	1	0	1	6

\* Gaharu ( a component for incense) theft is listed separately, because it is a major threat in any forest in Indonesia



In BBS, during the surveys and patrols a total of 28 cases of illegal activities were detected. The major case encountered was timber theft, encroachment of coffee plantations, rattan, resin, birds and deer, No trap of rhino encountered

Recording quartal four cases presented in Annex - 2, which includes: date of the incident, the date of detection, type of offense, the scene, the evidence (wildlife, as well as other evidence)

## ENCOUNTERED ANIMALS

Location	Rhino	Elephant	Tiger	Tapir	Other	Offences
Mes RPU TNBBS, Bandar Lampung, Metro, Lampung Utara						
KM 50, Grogol, Ngaras, Blok 07, Blok 11 dsk		✓	✓		✓	
Pahmongan, Hulu Mahnai Balak, Hulu Mahnai Lunik, Kebudu dsk	✓	✓		✓	✓	✓
Panji wayang, Way ngambur,	✓	✓	✓	✓	✓	✓



Grogol, Hulu way ngaras dsk	✓	✓		✓	✓	✓
Kubu perahu, way menterang, hulu way krui, way tengkuluk, way krui kiri, Pal 07 dsk	✓		✓	✓	✓	
Talang pendowo, kubu gedung, way biha dsk		✓	✓	✓	✓	
Blok 10 suoh, lampung barat						
Sukaraja atas, Bengkuntat bidang PTN I semaka dsk						
Desa sukajaya, Desa Trijaya, Wilayah Resort Merpas, SPTN Wilayah IV					✓	✓
Bintuhan, Dusun Sidorejo Desa Merpas, Desa Sukajaya wilayah resort merpas, SPTN Wilayah Bintuhan					✓	✓
Kota Metro, Lampung						
Kota Metro, Lampung						
Kubu Perahu, Kali Tengah, Way Tenumbang, Hulu Mahnai Balak, Pahmongan dsk	✓	✓	✓	✓	✓	✓
Kebudu, Pegunungan Pius, Way Tenumbang, Kubu Gedung dsk	✓	✓	✓		✓	
Merpas, Sidomulyo, Muara Sahung, Talang Kinal, Talang Lampung, Simpang Lima, Air Mantai Hulu dsk					✓	✓
Blok 07, Talang Baterai Ngaras, Rhino Camp, Way Bamban, Way Pemerihan dsk	✓	✓		✓	✓	✓
Desa Labuhan Ratu X, Labuhan Ratu VII dan Desa						

Braja Yekti						
Merpas, Sidorejo, Pasar Jumat, Muara sahung dsk						
Buper, resort sukaraja atas dsk						
Tampang dsk						
Muara way pemerihan, muara way canguk, way penimpahan dsk	✓	✓				
Pemerihan, Cawang haro, Pegunungan Nonggalan, Way canguk dsk						
SP3, Mendati, Hulu way rilau, way tembulih, grogol dsk	✓	✓	✓	✓	✓	✓
Letok noong, mendati, sukabanjar, langsa, talang semendo sansapo dsk						
Umbul basir, Hulu way ngaras, umbul samino, talang asahan dsk		✓		✓	✓	
Kantor RPU Way Kambas, Pusat Konservasi Gajah						
Rhino Camp Pal 50, Talang Bamban, Pemerihan dsknya						
Pos dal RPU BBS						
Pos dal RPU BBS						
Rhino Camp Pal 50, anak way bamban dsk	✓	✓		✓	✓	
Pal 50, KM30, KM 26 dsk	✓	✓			✓	
Karang Berak, umbul gajah, umbul kapuk						
Bumi perkemahan sukaraja atas						

Bumi perkemahan sukaraja atas						
Balai kencana, Balik bukit, sekincau dsk						
Biha, Tenumbang dsk			✓		✓	
Pemerihan, pintau dsk						
Krui, Lima kunci, serdang, suoh dsk					✓	✓

#### DETAILS OF RHINO SIGN

Patrol Area	Footprint	Direct sighting	Wallow	Feeding	Dung	Other signs
Mes RPU TNBBS, Bandar Lampung, Metro, Lampung	0	0	0	0	0	0
KM 50, Grogol, Ngaras, Blok 07, Blok 11 dsk	0	0	0	0	0	0
Pahmongan, Hulu Mahnai Balak, Hulu Mahnai Lunik, Kebudu dsk	0	0	2	2	0	0
Panji wayang, Way ngambur, Camp cabe, hulu way ngambur, hulu way mendati, krengseng, way mendati dsk	0	0	3	0	0	0
Grogol, Hulu way ngaras dsk	0	0	1	0	0	0
Kubu perahu, way menterang, hulu way krui, way tengkuluk, way krui kiri, Pal 07 dsk	2	0	2	0	0	0
Talang pendowo, kubu gedung, way biha dsk	0	0	0	0	0	0
Blok 10 suoh, lampung barat	0	0	0	0	0	0
Sukaraja atas, Bengkuntat bidang PTN I semaka dsk	0	0	0	0	0	0



Desa sukajaya, Desa Trijaya, Wilayah Resort Merpas, SPTN Wilayah IV	0	0	0	0	0	0
Bintuhan, Dusun Sidorejo Desa Merpas, Desa Sukajaya wilayah resort merpas, SPTN Wilayah Bintuhan	0	0	0	0	0	0
Kota Metro, Lampung	0	0	0	0	0	0
Kota Metro, Lampung	0	0	0	0	0	0
Kubu Perahu, Kali Tengah, Way Tenumbang, Hulu Mahnai Balak, Pahmongan dsk	0	0	4	0	0	0
Kebudu, Pegunungan Pius, Way Tenumbang, Kubu Gedung dsk	0	0	2	0	0	0
Merpas, Sidomulyo, Muara Sahung, Talang Kinal, Talang Lampung, Simpang Lima, Air Mantai Hulu dsk	0	0	0	0	0	0
Blok 07, Talang Baterai Ngaras, Rhino Camp, Way Bamban, Way Pemerihan dsk	0	0	2	0	0	0
Desa Labuhan Ratu X, Labuhan Ratu VII dan Desa Braja Yekti	0	0	0	0	0	0
Merpas, Sidorejo, Pasar Jumat, Muara sahung dsk	0	0	0	0	0	0
Buper, resort sukaraja atas dsk	0	0	0	0	0	0
Tampang dsk	0	0	0	0	0	0
Muara way pemerihan, muara way canguk, way penimpahan dsk	0	0	1	0	0	0
Pemerihan, Cawang haro, Pegunungan Nonggalan,	0	0	0	0	0	0

Way canguk dsk						
SP3, Mendati, Hulu way rilau, way tembulih, grogol dsk	2	0	2	0	1	0
Letok noong, mendati, sukabanjar, langsa, talang semendo sansapo dsk	0	0	0	0	0	0
Umbul basir, Hulu way ngaras, umbul samino, talang asahan dsk	0	0	0	0	0	0
Kantor RPU Way Kambas, Pusat Konservasi Gajah	0	0	0	0	0	0
Rhino Camp Pal 50, Talang Bamban, Pemerihan dsknya	0	0	0	0	0	0
Pos dal RPU BBS	0	0	0	0	0	0
Pos dal RPU BBS	0	0	0	0	0	0
Rhino Camp Pal 50, anak way bamban dsk	4	0	1	0	5	0
Pal 50, KM30, KM 26 dsk	2	0	1	1	2	0
Karang Berak, umbul gajah, umbul kapuk	0	0	0	0	0	0
Bumi perkemahan sukaraja atas	0	0	0	0	0	0
Bumi perkemahan sukaraja atas	0	0	0	0	0	0
Balai kencana, Balik bukit, sekincau dsk	0	0	0	0	0	0
Biha, Tenumbang dsk	1	0	0	0	0	0
Pemerihan, pintau dsk	0	0	0	0	0	0
Krui, Lima kunci, serdang, suoh dsk	0	0	0	0	0	0

# PATROL DATA

Location	Activities	Start Date	End Date	Days	No. of Person	Length (Km)	Remark
Mes RPU TNBBS, Bandar Lampung, Metro, Lampung Utara	Other tasks	02 Okt	09 Okt	11	5	0	Can be entered in the trade network and see, documented evidence such as 1 (one) pair of ivory
KM 50, Grogol, Ngaras, Blok 07, Blok 11 dsk	Patroly/ Survey	02 Okt	11 Okt	10	1	250	There are still a lot of illegal activities and poaching in the region  There are a bunch of elephants that come out of the national park, amounting to approximately 10
Pahmongan, Hulu Mahnai Balak, Hulu Mahnai Lunik, Kebudu dsk	Patroly/ Survey	13 Okt	23 Okt	11	3	44.5	Still found signs of old where rhinos and illegal activities in the National Park area, especially the area Pahmongan



Panji wayang, Way ngambur, Camp cabe, hulu way ngambur, hulu way mendati, krengseng, way mendati dsk	Patroly/ Survey	13 Okt	24 Okt	12	5	40,7	Not finding any sign of rhino.  Many found illegal activity in the area.  On location encroachment condition is still preserved.  Footprint discovery tigers,
Grogol, Hulu way ngaras dsk	Patroly/ Survey	13 Okt	24 Okt	12	4	107	Still found the former bird theft.  Still found the existence of a group of elephants and rhinos and friction Wallow Wallow around
Kubu perahu, way menterang, hulu way krai	Patroly/ Survey	13 Okt	25 Okt	13	4	25,76	Still finding signs of rhino
Talang pendowo, kubu gedung, way biha dsk	Patroly/ Survey	15 Okt	25 Okt	11	3	0	Patrolling in the area of the Kubu Gedung dsk
Blok 10 suoh, lampung barat	Patroly/ Survey	16 Okt	23 Okt	8	4	0	Not found mining activities in the area of Bukit Barisan Selatan National Park, there is only 1 (one) incoming stakes, approximately

Sukaraja atas, Bengkunat bidang PTN I semaka dsk	Patroly/ Survey	27 Okt	30 Okt	4	5	0	Did not reveal any illegal activities in the region, especially around Km 50
Desa sukajaya, Desa Trijaya, Wilayah Resort Merpas, SPTN Wilayah IV	Patroly/ Survey	06 Okt	13 Okt	8	4	139	Extension activities carried out in the village of Trijaya District of Nasal and followed by a discussion,  Still no information hunting deer and antelope in aeral HPT Air Manula Village area Trijaya, suspected perpetrators were the military and police
Bintuhan, Dusun Sidorejo Desa Merpas, Desa Sukajaya wilayah resort merpas, SPTN Wilayah Bintuhan	Patroly/ Survey	15 Okt	24 Okt	10	2	152	The existence of illegal hunting activity traditional information such as sambar deer and antelope species with mode using the foot snare trap hole with rope / intermittent and there is also from the rope and use of firearms belonging to persons in the area of Pematang

							<p>Melintang Muara Dua dan Bukit Tenam.</p> <p>Still found illegal logging activities allegedly area Talang Muslim, Middle Island Resort Merpas Sidorejo with the discovery of the garden Keruing Timber Beams types Rubber Owned villagers Sukajaya in 2 point of approximately 14 blocks.</p>
Kota Metro, Lampung	Intelejen	29 Okt	31 Okt	3	2	0	Can be met by the seller of ivory pipe, immediately invited into the house to see the direct target of the ivory.
Kota Metro, Lampung	Intelejen	01 Nop	10 Nop	10	05	0,00	following the capture of the target and the target obtained evidence that three pieces of ivory pipe, 1 display / decoration of 1 piece of ivory intact.

Kubu Perahu, Kali Tengah, Way Tenumbang, Hulu Mahnai Balak, Pahmongan dsk	Patroly/ Survey	05 Nop	16 Nop	12	05	39,4	There are still signs of the old rhino wallow, elephants, tapirs and tigers.
Kebudu, Pegunungan Pius, Way Tenumbang, Kubu Gedung dsk	Patroly/ Survey	06 Nop	14 Nop	09	05	56,78	Not found illegal actions regarding forest crime. found no sign of the new rhino rhino is only found signs of the existence of the old as well as signs of the existence of animals elephants and tigers are new.
Merpas, Sidomulyo, Muara Sahung, Talang Kinal, Talang Lampung, Simpang Lima, Air Mantai Hulu dsk	Patroly/ Survey	06 Nop	17 Nop	12	05	42	Not found signs of rhino and many found illegall activities, poaching and encroachment.
Blok 07, Talang Baterai Ngaras, Rhino Camp, Way Bamban, Way Pemerihan dsk	Patroly/ Survey	07 Nop	15 Nop	09	05	34	Many animals found tread tapirs, elephant and rhino wallow long.  Still found in the area of human activities such as fishing and bird seekers.

Desa Labuhan Ratu X, Labuhan Ratu VII dan Desa Braja Yekti	Other tasks	12 Nop	17 Nop	06	02	0,00	Have been trained and understand the concept of ecotourism is done by lifting YAPEKA with local culture and gained some knowledge that can be applied in BBS.
Merpas, Sidorejo, Pasar Jumat, Muara sahung dsk	Patroly/ Survey	12 Nop	18 Nop	07	04	0,00	Found wood types kruing and destroyed. Not found signs of poaching of protected animals.
Buper, resort sukaraja atas dsk	Other tasks	17 Nop	29 Nop	13	04	0,00	Through these activities are expected where BBSNP as a world heritage site can be well socialized to the community.
Tampang dsk	Patroly/ Survey	20 Nop	27 Nop	08	04	0,00	From the results of the monitoring and tracking of information, conflict areas in a safe condition under control / conducive.
Muara way pemerihan, muara way canguk, way penimpahan dsk	Patroly/ Survey	21 Nop	25 Nop	05	03	13	Found signs of the existence of such a Wallow rhino and elephant dung findings

Pemerihan, Cawang haro, Pegunungan Nonggalan, Way canguk dsk	Patroly/ Survey	21 Nop	27 Nop	07	03	30	installation of cameras traf in lane eight rhino
SP3, Mendati, Hulu way rilau, way tembulih, grogol dsk	Patroly/ Survey	21 Nop	29 Nop	09	04	41,56	Still found no sign of a rhino with the discovery of the site, dirt, friction and Wallows and also the discovery of signs of other large animals such as tigers tread, tread elephants and elephant dung.
Letok noong, mendati, sukabanjar, langsa, talang semendo sansapo dsk	Patroly/ Survey	21 Nop	29 Nop	09	04	0,00	Convey information to the public about the area BBSNP
Umbul basir, Hulu way ngaras, umbul samino, talang asahan dsk	Patroly/ Survey	21 Nop	29 Nop	09	04	38,41	Still found signs of animals such as elephants, tapirs, and still found illegal activities in the area BBSNP
Kantor RPU Way Kambas, Pusat Konservasi Gajah	Other tasks	23 Nop	28 Nop	06	02	0,00	The trainees have learned the techniques of investigation and became an informant which has been practiced in PKG with illegal elephant semen sales target by



							traders around PKG, participants know the types of organs protected animals and traded illegally on the black market.
Rhino Camp Pal 50, Talang Bamban, Pemerihan dsknya	Other tasks	03 Des	07 Des	5	4	0,00	Has been the implementation of briefing materials, materials provided, among others; Basic report format RPU, Patrol, Navigation, photography and other techniques
Pos dal RPU BBS	Other tasks	03 Des	07 Des	5	9	0,00	Can see and understand that the duty of members of the RPU and can use the navigation tool.
Pos dal RPU BBS	Patroly/ Survey	04 Des	06 Des	3	4	0,00	Many found the damaged boundary markers and lost along the path Gutters Bamban
Rhino Camp Pal 50, anak way bamban dsk	Patroly/ Survey	04 Des	14 Des	11	1	0,00	Tear down the hut / camp in the area Sekincau (two huts) together local officials

Pal 50, KM30, KM 26 dsk	Other tasks	06 Des	23 Des	18	6	0,00	Has been the implementation of training activities RPU- YABI which was held at Talbot Top Sukaraja atas Resort.
Karang Berak, umbul gajah, umbul kapuk	Patroly/ Survey	07 Des	12 Des	6	4	8.1	Many found the footprint rhinoceros, tapir, elephants and rafflesia flower found still in the form of the knob.
Bumi perkemahan sukaraja atas	Patroly/ Survey	07 Des	12 Des	6	3	12	Just found a Wallow former long rhinoceros and elephant species.
Bumi perkemahan sukaraja atas	Other tasks	11 Des	23 Des	13	12	0,00	Be able to understand the material provided both theory and practice
Balai kencana, Balik bukit, sekincau dsk	Other tasks	12 Des	15 Des	4	2	0,00	agreement or Uspika anmtara local communities to maintain and preserve forests BBSNP
Biha, Tenumbang dsk	Patroly/ Survey	26 Des	30 Des	5	2	25	Obtained information that some people are often out of the area to look for fruit Suti (rattan fruit). Found tread wildlife

							tiger
Pemerihan, pintau dsk	Patroly/ Survey	26 Des	30 Des	5	6	78	Not obtained information about disturbances in the area BBSNP and loss of information Obtained boundary markers in HPT and HL.
Krui, Lima kunci, serdang, suoh dsk	Patroly/ Survey	26 Des	31 Des	6	5	200	Obtained information about hunting in Serdang area about 1 month ago, namely the hunters into the region by bringing a dog.

#### GENERAL PERFORMANCE PARAMETERS

Number of general activities	39
Number of Patrol and Surveys	28
Distance Walked (Kilometers)	1377.21
Distance Walked for Patrol and Survey	1377.21
Number of Field Days	1398
Number of Field Days for Patrol and Survey	889
Field Days per-person per-month	13.31

A total of 39 activities were carried out during this quarter (October-December) of 2014, among them 28 patrol / survey, which includes mileage 1.377.21 Km, the patrol / survey reached 889 days in the field with an average of 13.31 days per people per

month. Of patrol activities, they engage in cooperation with the National Parks combined operations for the expulsion of the encroachers from the region

The number of working days less than 15 working days / person / month because they entered a long RPU personnel who become civil servants. Whereas if not combined, then the working day amounts to more than 17 days / person / month.

### PROGRAM PERSONNEL

(Summary of Field Days Per-Person Per-Month 01 October – 31 December 2014)

Personnel	Days	Average	
		Field days / month	
Adi Putrawan	36	18.00	2 (Month)
Agung Setiono	71	23.67	3 (Month)
Agus Sulaeman	46	15.33	3 (Month)
Bahara	57	19.00	3 (Month)
Budiono	58	19.33	3 (Month)
Dedi Saputra	40	20.00	2 (Month)
Edi Mulato	42	21.00	2 (Month)
Gunalan	41	20.50	2 (Month)
Hadi Sucipto	20	10.00	2 (Month)
Hendra Wijaya	51	17.00	3 (Month)
Heriyanto RPU	49	24.50	2 (Month)
Heryanto	46	15.33	3 (Month)
Hifzon	44	22.00	2 (Month)
Jalisi	8	8.00	1 (Month)
Khoiri	41	20.50	2 (Month)
Madnurzen	11	11.00	1 (Month)
Maman Suherman	12	12.00	1 (Month)
Marsum	54	18.00	3 (Month)

Merli Aroc Hulu	12	12.00	1 (Month)
Mugiono	42	21.00	2 (Month)
Muzakkir	63	21.00	3 (Month)
Olih	33	11.00	3 (Month)
Redi Setiawan	44	22.00	2 (Month)
Romianto	69	23.00	3 (Month)
Samsurizal	8	8.00	1 (Month)
Saptono	42	14.00	3 (Month)
Sinyo Handoko	62	20.67	3 (Month)
Sudari	35	11.67	3 (Month)
Suharsono	49	24.50	2 (Month)
Syahroni	56	18.67	3 (Month)
Teguh Taryono	38	19.00	2 (Month)
Timbul TB	58	19.33	3 (Month)
Toho	31	10.33	3 (Month)
Uga Yogaswara	12	12.00	1 (Month)

Note :  : has become a civil servant and has been active in national park

Other personnels :

1.	Arief Rubianto	Manager Protection for Sumatra
2.	Rahman	Field Coordinator RPU
3.	Zen Afrial	Administrative and Finance staf of RPU BBS
4.	Heri Pasiman	Field Database RPU BBS
5.	Juni Effendi	Driver-1
6.	Ela Herawati	Cook-1
7.	Masitoh	Cook-2
8.	Hari Saputra	Office boy-1

# **WAY KAMBAS NATIONAL PARK**

**01 October – 30 November 2014**

**(Q4)**

## **Highlights:**

- 30 activities of patrol/surveys, which covering 1.335.70 Km and field-days 10.87 days per person per month
- 9 findings signs of rhino Video of rhino from camera trap
- 43 cases of illegal activities were encountered (Illegal logging, Forest fire, fishing,
- 3 location of fires



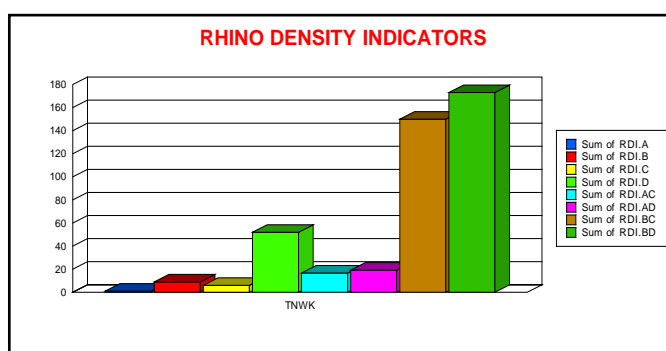
## BASIC POPULATION PARAMETERS

Number of Footprints	Number of Locations with rhino signs					
	Footprints	Wallows	Feces	Feeding	Other Signs*	Direct Sighting
1	1	0	6	8	10	0

\* Include Urine, Scratches, Rubs.

During the 30 patrol / survey in this period, found signs of rhino as: footprint, Wallow, feeding and rhino dung and not face to face with a rhino.

## RHINO DENSITY INDICATORS



Rhino		RPU Field Presence		Density Indicators			
A	B	C	D	A/C	A/D	B/C	B/D
Number of print locations	Number of Rhino Signs*	Field Days**	Distance Walked** *	Rhino prints/ 100 days	Rhino prints/ 1000 km	Rhino signs/ 100 days	Rhino signs/ 1000 km
1	26	27	226.5	3.7	4.42	96.3	11479

\* The total number of sign (excluding footprints) of rhino found. \*\* Total number of RPU group field days. (Footprints are not included, because the number provided in the table is the number of individual footprints and not the number of seprate tracks ).

### ILLEGAL ACTIVITIES ENCOUNTERED

Gaharu * Theft	Encroachment	Timber Theft	Forest Product Theft	Illegal Hunting		
				Rhino / Trap	Non Rhino (Mammals)	Other
0	12	2	1	0	1	27

\* Gaharu ( a component for incense) theft is listed separately, because it is a major threat in any forest in Indonesia

In Way Kambas NP, during the surveys and patrols a total of 43 cases of illegal activities were encountered. The major case encountered was encroachment.

Record of cases as per what is attached in Annex – 2, which includes : date of incidence, date of detection, type of offences, place of occurrence, evidence ( forest / wildlife produces recovered, Arms /other evidence, suspects, legal status and comments.

### ENCOUNTERED ANIMALS

Nama Daerah	Rhino	Elephant	Tiger	Tapir	Others	Offences
Rawa bunder dan sekitarnya	0	0	0	0	√	√
PLG dan Sekitarnya	0	0	0	0	√	√
Kuala penet dan sekitarnya	0	0	0	0	√	√
PLG dan Sekitarnya	0	√	0	√	√	√
Kuala penet dan sekitarnya	0	0	0	0	√	√
Rawa bunder dan sekitarnya	0	√	0	0	√	0
PLG dan Sekitarnya	0	0	0	0	0	0
Susukan Baru,	0	√	0	0	√	√

Mentru, Rasau						
PLG, Rawa Jambu, Saporu, dan sekitarnya	0	√	0	√	√	√
way Kanan, D1, Wako Benteng	0	0	0	√	√	0
Braja kencana, Braja luhur, karang anyar, sukorahayu	0	0	0	0	√	√
D1, Camp Sore, Wako Benteng	√	0	√	√	√	√
Gambas R1, Tulung Sula, Perambahan	0	0	0	0	√	√
Plang ijo dan sekitarnya	0	0	0	0	0	0
Margayu, srs dan sekitarnya	0	0	0	0	√	√
Margayu, dan sekitarnya	0	0	0	0	√	√
Gambas R1, Tulung Sula, Perambahan.	0	0	0	0	0	0
Margayu, dan sekitarnya.	0	0	0	0	√	√
D1, Camp Sore, Sentral Wako	√	√	√	0	√	0
D1, Camp Sore, Wako Benteng	√	0	√	0	√	0
D1, Camp Sore, Wako Benteng	√	√	√	0	√	0
D1, Camp Siang dan	0	√	0	0	√	√

sekitarnya						
BBS,dan sekitarnya	0	0	0	0	0	0
Rantau Jaya Udik RPTN Susukan Baru	0	√	0	0	√	√
Margayu, Braja Asri	0	0	0	0	0	0
SRS dan sekitarnya	0	0	0	0	√	√
Gambas R1, Tulung Sula, Perambahan	0	0	0	0	√	√
Margayu, dan sekitarnya.	0	0	0	0	0	0
Way Bungur dan sekitarnya	0	0	0	0	0	0
Rantau Jaya Udik RPTN Susukan Baru	0	0	0	0	0	0

#### DETAILS OF RHINO SIGN

Location	Footprint	Direct Sighting	Wallow	Feeding	Faeces	Others
Rawa bunder dan sekitarnya	0	0	0	0	0	0
PLG dan Sekitarnya	0	0	0	0	0	0
Kuala penet dan sekitarnya	0	0	0	0	0	0
PLG dan Sekitarnya	0	0	0	0	0	0
Kuala penet dan	0	0	0	0	0	0

sekitarnya						
Rawa bunder dan sekitarnya	0	0	0	0	0	0
PLG dan Sekitarnya	0	0	0	0	0	0
Susukan Baru, Mentrui, Rasau	0	0	0	0	0	0
PLG, Rawa Jambu, Saporu, dan sekitarnya	0	0	0	0	0	0
way Kanan, D1, Wako Benteng	0	0	0	0	0	0
Braja kencana, Braja luhur, karang anyar, sukorahayu	0	0	0	0	0	0
D1, Camp Sore, Wako Benteng	1	0	0	2	1	4
Gambas R1, Tulung Sula, Perambahan	0	0	0	0	0	0
Plang ijo dan sekitarnya	0	0	0	0	0	0
Margayu, srs dan sekitarnya	0	0	0	0	0	0
Margayu, dan sekitarnya	0	0	0	0	0	0
Gambas R1, Tulung Sula, Perambahan.	0	0	0	0	0	0
Margayu, dan sekitarnya.	0	0	0	0	0	0
D1, Camp Sore, Sentral Wako	2	0	0	4	3	3
D1, Camp Sore, Wako Benteng	1	0	0	0	3	5
D1, Camp Sore,	2	0	0	2	2	3

Wako Benteng						
D1, Camp Siang dan sekitarnya	1	0	0	0	0	5
BBS,dan sekitarnya	0	0	0	0	0	0
Rantau Jaya Udik RPTN Susukan Baru	0	0	0	0	1	0
Margayu, Braja Asri	0	0	0	0	0	0
SRS dan sekitarnya	0	0	0	0	0	1
Gambas R1, Tulung Sula, Perambahan	0	0	0	0	0	0
Margayu, dan sekitarnya.	0	0	0	0	0	0
Way Bungur dan sekitarnya	0	0	0	0	0	0
Rantau Jaya Udik RPTN Susukan Baru	0	0	0	0	0	0

#### PATROL DATA

Location	Activities	Start Date	End Date	Days	No.of person	Length (km)	Remark
PLG dan Sekitarnya	Patrol / Survey	01/10/2014	05/10/2014	20	4	34	area of forest fires PKG
Kuala penet dan sekitarnya	Patrol / Survey	04/10/2014	08/10/2014	15	3	8	signs of poaching
Rawa bunder dan sekitarnya	Patrol / Survey	13/10/2014	14/10/2014	6	3	0	Finding active track illegal actors, evacuate affected a



							bear trap.
PLG dan Sekitarnya	Patrol / Survey	13/10/2014	18/10/2014	108	18	30	Managed to catch 3 fish thieves actors, thwart traditional hunting, and record the presence of elephants, tapirs
Susukan Baru, Mentru, Rasau	Patrol / Survey	14/10/2014	18/10/2014	35	7	1475	Finding the perpetrators of illegal active paths, forest fires and illegal logging
Kuala penet dan sekitarnya	Patrol / Survey	15/10/2014	18/10/2014	20	5	8	Successfully detect illegal entry point that is often used by the perpetrators
PLG dan Sekitarnya	Patrol / Survey	19/10/2014	20/10/2014	28	14	143	This sudden Patrol activities performed do not get results
Rawa bunder dan sekitarnya	Convoy Elephant	19/10/2014	22/10/2014	8	2	5	Successfully led the elephants back into

							the region
PLG, Rawa Jambu, Saporo, dan sekitarnya	Patrol / Survey	26/10/2014	31/10/2014	120	20	105	still found snares wildlife, illegal logging, aloes and find signs of animals such as elephants, bears
way Kanan, D1, Wako Benteng	Patrol / Survey	03/11/2014	07/11/2014	25	5	16	found signs of the presence of wildlife, improve the well in camp supporters D1 sebagai patrol activities
Braja kencana, Braja luhur, karang anyar, sukorahayu	Patrol / Survey	04/11/2014	06/11/2014	30	10	30	prevent the poaching
Gambas R1, Tulung Sula, Perambahan	Patrol / Survey	10/11/2014	15/11/2014	30	5	0	Illegal active path

D1, Camp Sore, Wako Benteng	Patrol / Survey	10/11/2014	15/11/2014	60	10	52	find signs of the existence of tapirs, tigers, bears, rhinos, and finding traces of the illegal form.
Plang ijo dan sekitarnya	Other	13/11/2014	16/11/2014	20	5	20	can determine the village-based tourism development techniques, familiar methods of scouting and interactive eco-tourism.
Margayu, srs dan sekitarnya	Patrol / Survey	19/11/2014	21/11/2014	36	12	15	find stub street theft of birds around the SRS
Margayu, dan sekitarnya	Patrol / Survey	19/11/2014	21/11/2014	15	5	18	prevent the poaching
Gambas R1, Tulung Sula, Perambahan.	Patrol / Survey	24/11/2014	26/11/2014	30	10	20	verges on patrol in the area
Margayu, dan sek	Patrol / Survey	27/11/2014	29/11/2014	51	17	10	hunters stalking
D1, Camp Sore, Sentral Wako	Patrol / Surve	01/12/2014	07/12/2014	28	4	58	record signs of protected animals

	y						
D1, Camp Sore, Wako Benteng	Patrol / Survey	01/12/2014	07/12/2014	28	4	60	Not found Encroachment
D1, Camp Sore, Wako Benteng	Patrol / Survey	01/12/2014	07/12/2014	28	4	56,5	record signs of protected animals
D1, Camp Siang dan sekitarnya	Patrol / Survey	11/12/2014	11/12/2014	7	7	52	find active track the theft of birds, fish thieves and aloes
BBS,dan sekitarnya	Patrol / Survey	12/12/2014	19/12/2014	88	11	200	Training navigation tools and field surveys
Rantau Jaya Udik RPTN Susukan Baru	Patrol / Survey	15/12/2014	20/12/2014	42	7	15	found signs of rhino
Margayu, Braja Asri	Patrol / Survey	20/12/2014	21/12/2014	8	4	12,69	prevent perpetrators poaching
SRS dan sekitarnya	Patrol / Survey	22/12/2014	23/12/2014	30	15	35	prevent perpetrators poaching
Gambas R1, Tulung Sula, Perambahan	Patrol / Survey	25/12/2014	26/12/2014	10	5	56	hunters track
Margayu, dan sekitarnya.	Patrol / Survey	25/12/2014	27/12/2014	12	4	30	Monitoring

	y						
Way Bungur dan sekitarnya	Patrol / Survey	29/12/2014	31/12/2014	36	12	49	evacuation boat
Rantau Jaya Udik RPTN Susukan Baru	Patrol / Survey	31/12/2014	31/12/2014	4	4	30	gather information from the public about the hunters

#### GENERAL PERFORMANCE PARAMETERS

Number of general activities	30
Number of Patrol and Surveys	30
Distance Walked (Kilometers)	1.335.70
Distance Walked for Patrol and Survey (Km)	1.335.70
Number of Field Days	978
Number of Field Days for Patrol and Survey	978
Field Days per-person per-month	10.87

A total of 30 activities were conducted during this quarter (01 Oktober-30 December of the year and among of them were 30 activities of patrol/surveys, which covering 1.335.7Km and field-days 10.87 days per person per month. Of their patrol activities, they engage in cooperation with the National Park.

The number of working days less than 15 working days / person / month because they entered a long RPU personnel who become civil servants. Whereas if not combined, then the working day amounts to more than 17 days / person / month.

## PROGRAM PERSONNEL

(Summary of Field Days Per-Person Per-Month (01 Oktober – 30 December 2014))

Personnel	Days	Average	
		Field days / month	
Agus Riyadi	8	8,00	( 1 Month )
Amrodi	8	8,00	( 1 Month )
Anggi Gunawan	41	13,67	( 3 Month )
Arif Lukman Fauzun	43	14,33	( 3 Month )
Aris Hendriyanto	11	11,00	( 1 Month )
Balyan Irawadi Siregar	41	13,67	( 3 Month )
Bambang Meiyono	48	16,00	( 3 Month )
Boston Kaloko	8	8,00	( 1 Month )
Daryono	8	8,00	( 1 Month )
Dede Rahmat	34	11,33	( 3 Month )
Dwi Agus Kurniawan	50	16,67	( 3 Month )
Encang Sutarma	44	14,67	( 3 Month )
Fery Agus Bangun	46	15,33	( 3 Month )
Heri Setiyawan	46	15,33	( 3 Month )
Heri Wibowo	50	16,67	( 3 Month )
Joko	51	17,00	( 3 Month )
Joko Iswanto	13	13,00	( 1 Month )
Muhammad Sanusi	37	12,33	( 3 Month )
Muslimin	7	7,00	( 1 Month )
Nur Basuki	40	13,33	( 3 Month )
Nurhadi	6	6,00	( 1 Month )



Rosdi Hartono	8	8,00	( 1 Month )
Rustanto	38	12,67	( 3 Month )
Sugiono	41	13,67	( 3 Month )
Suhadi	46	15,33	( 3 Month )
Sujoko	52	17,33	( 3 Month )
Supardi	47	15,67	( 3 Month )
Supriyono	43	14,33	( 3 Month )
Totok Riyadi	14	14,00	( 1 Month )
Yudi Heri Pamungkas	49	16,33	( 3 Month )

Other personnels :

1.	Ujang Suryadi	Field Coordinator
2.	Sugondo	Administrative and Finance Officer
3.	Suyana	Driver
4.	Yahmin	Boat driver
5.	Suparmi	Cook

Note :  : has become a civil servant and has been active in national park

# UJUNG KULON NATIONAL PARK

## Highlights :

- 10 patrols on this period , there had been achieved 17.81 fielddays perperson per month.
- during the surveys and patrols a total of 21 cases of illegal activities were detected (bird trapping, illegal fishing, Honey bee)
- Team RPUUK find dead rhino blocked Citengah, no former poaching for rhino dies while allegedly due to illness.

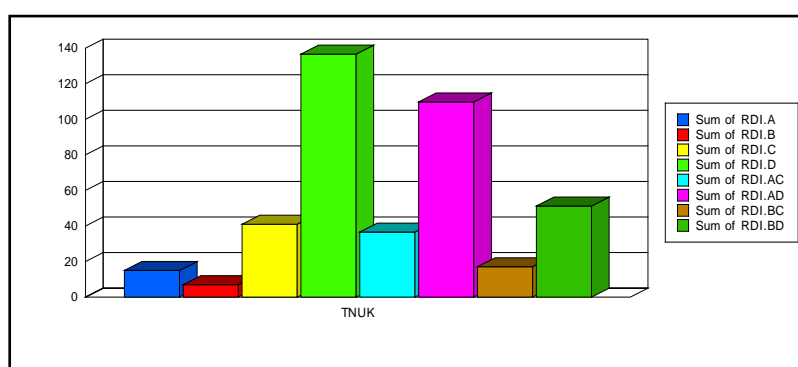
### BASIC POPULATION PARAMETERS

No. Of Case Footprint Encountered	Wallow	Feces	Food	Other Signs	Direct Sighting
15	1	2	15	2	0

\* Include Urine, Scratches, Rub

Over 10 patrol / survey in this period, 35 found signs of rhinoceros are: footprint, Wallow, feeding, rhino dung and other signs and do not meet directly with rhino.

### RHINO DENSITY INDICATORS



Rhino		RPU Field Presence		Density Indicators			
A	B*	C	D	A/C	A/D	B/C	B/D
Number of print locations	Number of Rhino Signs*	Field Days**	Distance Walked (km)	Rhino prints/ 100 days	Rhino prints/ 1000 km	Rhino signs/ 100 days	Rhino signs/ 1000 km
15	7	41	136.65	36.59	109.77	17.07	51.23

(B\*) The total number of sign (excluding footprints) of rhino found. \*\* Total number of RPU group field days during surveys only (excluding other activities). \*\*\* Total number of range in kilometer covered by RPU group during surveys activity.

### ILLEGAL ACTIVITIES ENCOUNTERED

Encroachment	Timber Theft	Forest Product Theft	Illegal Hunting		
			Rhino / Trap	Non Rhino (Mammals)	Other
0	0	0	0	0	21

This period in UK, during the surveys and patrols a total of 21 cases of illegal activities were detected. The major case encountered were Non mammals hunting (bird, fish/shrimps). No trap of rhino encountered.

### ENCOUNTERED ANIMALS

Location	Rhion	Banteng	Tiger	Other	Offences
Legon Pakis, Resort Cegog, Ciguha, Ermokla, Cibarengkok, Cepak bungur, Pesawahan Cangketek, Ciguha barat	√	0	0	√	√
Handeleum, Cikeuyeup, Cigenter, Gardu buruk, transek 8, Transek 9, balagadigi	√	√	0	√	0
P.Peucang, Sanghiyang sirah, Nyawaan, Nyiur, Lg Waru, Jamang, Citelang	0	0	0	√	0
Cigorondong, Ds. Ranca pinang, Ermokla	0	0	0	√	√
Legon Wru, Cikarang Citengah, Jalur Transek 10, Gardu buruk, Cigenter, Handeleum	√	0	0	√	√
Cidaon, Cukang Galih, Cibungur, Cisereheun, Sang hiyangsirah, Gn. Kabuyutan, Bidur, Ciramea, Cibom, Cikembang	√	0	0	√	√

Cilintang, Karang ranjang, Seuseupan, Laban, Pangukusan, Cibandawoh	√	0	0	√	√
---	---	---	---	---	---

#### DETAILS OF RHINO SIGN

Location	Footprint	direct sightings	Wallow	Food	Feces	Other Sign
Legon Pakis, Resort Cegog, Ciguha, Ermokla, Cibarengkok, Cepak bungur, Pesawahan Cangketek, Ciguha barat	1	0	0	0	0	0
Handeleum, Cikeuyeup, Cigenter, Gardu buruk, transek 8, Transek 9, balagadigi	3	0	0	9	2	0
P. Peucang, Sanghiyang sirah, Nyawaan, Nyiur, Lg Waru, Jamang, Citelang	0	0	0	0	0	0
Cigorondong, Ds. Ranca pinang, Ermokla	0	0	0	0	0	0
Legon Wru, Cikarang Citengah, Jalur Transek 10, Gardu buruk, Cigenter, Handeleum	5	0	1	6	0	2
Cidaon, Cukang Galih, Cibungur, Cisereheun, Sang hiyangsirah, Gn. Kabuyutan, Bidur, Ciramea, Cibom, Cikembang	4	0	0	0	0	0
Cilintang, Karang ranjang, Seuseupan, Laban, Pangukusan, Cibandawoh	2	0	0	0	0	0

### PATROL DATA

Location	Acti-vities	Start Date	End Date	Days	No Of Person	Length (Km)	Remark
Legon Pakis,Resort Cegog, Ciguha, Ermokla, Cibarengkok, Cepak bungur, Pesawahan Cangketek, Ciguha barat	patroli /survey	6	05-10-14	25-10-14	21	121.68	Found rhino footprint as well as interference in the region
Handeleum, Cikeuyeup, Cigenter, Gardu buruk, transek 8, Transek 9, balagadigi	patroli /survey	4	05-10-14	25-10-14	21	90.25	found Footprint, feeding, feces
P.Peucang, Sanghiyang sirah, Nyawaan, Nyiur, Lg Waru, Jamang, Citelang	patroli /survey	4	05-10-14	25-10-14	21	97	found no signs of rhino
Cigorondong, Ds. Ranca pinang, Ermokla	patroli /survey	4	06-11-14	25-11-14	20	75.59	Fence net Theft Found JaRhISCA
Legon Wru, Cikarang Citengah, Jalur Transek 10, Gardu buruk, Cigenter,	patroli /survey	4	06-11-14	25-11-14	20	46.4	Found Tread, feed, manure, urine, Wallows and bones Rhinos once evacuation together with Employees BTNUK

Handeleum							and still found disturbances in the regio
Cidaon, Cukang Galih, Cibungur, Cisereheun, Sang hiyangsirah, Gn. Kabuyutan, Bidur, Ciramea, Cibom, Cikembang	patroli /surve y	4	06- 11- 14	25- 11-14	20	31.7	found rhino footprint, dirt and disorder in the region
Cilintang, Karang ranjang, Seuseupan, Laban, Pangukusan, Cibandawoh	patroli /surve y	4	06- 11- 14	25- 11-14	20	100.84	found rhino footprint, dirt and disorder in the region
Tamanjaya,Lg . Pakis,Tamanja ya Girang, Cimenteng, Paniis	patroli /surve y	4	05- 12- 14	23- 12-14	19	45.65	obtain accurate information about the plan of action and terror the demonstrators via sms / phone
Tamanjajaya Girang, Lg Pakis, Paniis, Cimenteng	patroli /surve y	4	05- 12- 14	23- 12-14	19	45.65	obtain accurate information about the plan of action and terror the demonstrators via sms / phone
Tamanjaya girang, Lg Pakis, Paniis,	patroli /surve y	4	05- 12- 14	23- 12-14	19	45.65	obtain accurate information about the plan of action and terror the

Cimenteng							demonstrators via sms / phone
Tamanjaya girang, Lg Pakis, Paniis, Cimenteng	patroli /survey	4	05-12-14	23-12-14	19	45.65	obtain accurate information about the plan of action and terror the demonstrators via sms / phone

### GENERAL PERFORMANCE PARAMETERS

Number of general activities	10
Number of Patrol and Surveys	10
Distance Walked (Kilometers)	700.44
Distance Walked for Patrol and Survey (Km)	700.44
Number of Field Days	200
Number of Field Days for Patrol and Survey	200
Field Days per-person per-month	16.51

A total of 10 activities were carried out during this quarter (October-December) of 2014, among them 10 patrol / survey, which includes mileage 700,44 Km, the patrol / survey reached 200 days in the field with an average of 16.51 days per people per month. Of patrol activities, they engage in cooperation with the National Parks combined operations for the expulsion of the encroachers from the region



## PROGRAM PERSONNEL

*Summary of Field Days Per-Person Per-Month 01 October – 31 December 2014*

Personnel	Days	Average Field / month
Acep Supriatna	60	20.00 ( 3 Month )
Andri Duriat	60	20.00 ( 3 Month )
Edi	41	20.50 ( 3 Month )
Eli Yuswanto	41	20.50 ( 3 Month )
Endin	60	20.00 ( 3 Month )
Hadimi	41	20.50 ( 3 Month )
Haerudin	21	21.00 ( 1 Month )
Jajat Sudrajat	60	20.00 ( 3 Month )
Muhamad. Toha**	39	19.50 ( 2 Month )
Mulyani	60	20.00 ( 3 Month )
Samaya	39	19.50 ( 2 Month )
Sorhim	60	20.00 ( 3 Month )
Sukardiman	60	20.00 ( 3 Month )
Sunardi	60	20.00 ( 3 Month )
Tisno	60	20.00 ( 3 Month )
Usep Suhendar	39	19.50 ( 2 Month )
Yadi Suryana	41	20.50 ( 3 Month )

**OTHER PERSONNELS :**

Dendin Martin	Field Coordinator
Yusep Hardiana	Administrative/Finance Officer/ Database Officer
Olis	Boat Driver
Samaun	Staff Boat
Saefullah	Cook
Haerudin **	RPU members

**Note :** \*\* 2 months are in basecamp to replace temporary office boy new position during a training field

## ANNEX-2 : OFFENSES OR ILLEGAL ACTIVITIES ENCOUNTERED DURING Q4 2014

(1 OCTOBER – 31 DECEMBER 2014)

### 1. OFFENSES IN BUKIT BARISAN SELATAN NP

Date	<b>Remarks</b> <ul style="list-style-type: none"> <li>Type of offences</li> <li>Forest/WL produce recovered</li> <li>Arm / amunition recovered</li> <li>People arrested</li> </ul>	Age	Location	Action Taken
01-10-14	Evidence wood types keruing hidden near the village cemetery Sukajaya	< 4 day	Kebun kopi	Evidence secured to Mapolres
01-10-14	Stump felling timber types keruing, meranti	< 1 tahun	Talang Bolot	Documented
01-10-14	Stumps are approximately 25 pieces of old and new findings age 1 week to 6 months. average diameter of 50 s.d 100 cm	< 6 month	Talang muslim, Sidorejo, Merpas	Evidence on the nails and in the documentation
01-10-14	Stumps were 17 fruit spread, diameter 70 to 100 cm	< 6 month	Talang muslim, Merpas	Evidence in spikes and documented
01-10-14	Number of poles 4 pieces scattered and diameter of 70 to 100 cm	< 6 month	Talang muslim, Merpas	
01-10-14	Evidence secured to the Region IV Office SPTN	< 6 month	Talang muslim, Merpas	Documented

01-10-14	2 pieces of illegal logging camp perpetrators destroyed the size of 2x3 meters and 1 bar chainsaw secured	< 1 month	Talang muslim, Merpas	destroyed and documented
08-10-14	Rapporteur Sumari villagers Trijaya, and regular hunting activities at least 2 times in 1 month actors alternately	< 1 day	Desa Trijaya Kecamatan Nasal	Documented
08-10-14	illegallogaing allegedly entered SPTN merpas region, members of the police involved and villagers Trijaya contribute as manol and motorcycle taxis. Rapporteur Galigi	< 1 day	Desa Trijaya Kecamatan Nasal	recorded and documented
16-10-14	Meet 6 fish finder	< 1 day	way ngambur	Be warned and given a referral
17-10-14	met 3 people search Bird	< 1 day	way ngambur	Examined and expelled
17-10-14	5 Kg pieces of rattan	< 1 day	way ngambur	Destroyed
17-10-14	Camp former bird theft		Hulu way ngaras	Destroyed
18-10-14	plantation resin is taken care of and taken the results	< 4 day	Pahmongan	reported to the local Resort
18-10-14	21 logs log types kruing with a length of 2m	< 1 week	Desa sukajaya, kec.nasal	safekeeping
19-10-14	107 logs types kruing	< 1 week	Desa sukajaya,	safekeeping

	with a length of 4m		kec.nasal	
20-10-14	51 logs log types kruing with a length of 4m	< 1 week	Desa sukajaya, kec.nasal	safekeeping
20-10-14	Perburuan / Hunt	< 1 month	way telemak	Destroyed and Documented
21-10-14	CBS foreman perpetrators allegedly using weapons belonging to the army / police in the HPT. information from informants Daya Causeway Crossing	< 1 day	Pematang melintang	Documented
09-11-14	62 pieces of wood beams cans	< 4 day	Sidomulyo Merpas	Destroyed
09-11-14	22 pieces of wood beams cans	< 4 day	Sidomulyo Merpas	Destroyed
09-11-14	12 pieces of wood beams cans	< 4 day	Sidomulyo Merpas	Destroyed
09-11-14	1 unit of the motor vehicle into the area	< 1 day		be confiscated
11-11-14	encroachment of coffee plantations, the area / land 5 acres	0 day	Talang Lampung	Given direction and told to go home
11-11-14	Camp capacity 7 former thieves birds	< 1 month	Anak way bamban	Destroyed
12-11-14	Encroachment coffee plantation land area of 2 hectares	0 day	Talang kinal	Given direction and told to go home
12-11-14	1 unit senso machine / wood saws	0 day	Talang kinal	be confiscated

12-11-14	camp with a capacity of 5 people suspected thieves former bird	< 6 month	way tenumbang	Destroyed
13-11-14	Encroachment of coffee plantations, 6 acres of land area		Talang kinal	Given direction and told to go home
13-11-14	1 snare deer and birds	< 1 week	Talang kinal	Destroyed
14-11-14	Bird	< 1 week	Pahmongan	Destroyed
26-11-14	Bird	< 1 month	way tembulih	Destroyed
29-12-14	Evacuate the deer carcass was buried	< 4 day	Pungkalan	buried and documented

## 2. OFFENSES IN WAY KAMBAS NP

Date	Remarks :  <ul style="list-style-type: none"> <li>• Type of offense</li> <li>• Forest / WL produce recovered</li> <li>• Arm / Amunition recovered</li> <li>• People arrested</li> </ul>	Age	Location	Action Taken  Legal status / comments
02/10/2014	illegal logging	< 1 month	Resord Kuwala Penet	recorded
02/10/2014	forest fires	< 1 week	Resord Kuwala Penet	recorded
03/10/2014	Bike trail estimated 3 units	< 1 day	Resord Kuwala Penet	recorded
03/10/2014	forest fires 29 ha	< 1 week	Resord Margayu	Documented
06/10/2014	human activities are suspected thief grass	< 1 day	Resord Kuwala Penet	recorded
06/10/2014	2 thieves grass	0 day	Resord Kuwala Penet	Recorded and given a referral
13/10/2014	release of the bears that entangled	< 1 day	Resord Rawa bunder	evacuation of the bears.
14/10/2014	Hearing gunshots	0 day	Resord Margayu	monitoring
15/10/2014	Access illegal lane	< 1 week	Resord Margayu	recorded
15/10/2014	Motorcycle trail	< 1 day	Resord Margayu	recorded

15/10/2014	40 buffaloes grazing wild	0 day	Resord Totoprojo	recorded
16/10/2014	Access illegal lane	< 4 day	Resord Margayu	recorded
16/10/2014	4 fish theft	0 day	Resord Margayu	Recorded and given a referral
16/10/2014	12 four fish theft	0 day	Resord Margayu	Recorded and given a referral
16/10/2014	fish theft	0 day	Resord Margayu	recorded
16/10/2014	forest fires 10 hectare	< 1 day	Resord Totoprojo	recorded
17/10/2014	Access illegal lane	< 4 day	Resord Totoprojo	recorded
17/10/2014	Bike trail estimated 3 units	< 4 day	Resord Totoprojo	recorded
18/10/2014	forest fires 5 hectare	< 1 day	Resord Totoprojo	recorded
26/10/2014	timber theft types plangas	< 1 month	Resord Margayu	recorded
26/10/2014	forest fires	< 1 month	Resord Margayu	recorded
26/10/2014	meshes deer	< 1 month	Resord Margayu	destroyed
27/10/2014	meshes deer	< 1 month	Resord Margayu	destroyed
27/10/2014	meshes deer	< 1 week	Resord Margayu	destroyed
28/10/2014	forest fires	0 day	Resord Margayu	be quenched
13/11/2014	Access illegal lane	< 1 day	Resord Sekapuk	recorded



19/11/2014	conduct reconnaissance against the perpetrators of illegal activities	0 day	Resord Margayu	monitored
19/11/2014	heard gunshots	0 day	Resord Margayu	monitored
21/11/2014	meshes deer	< 1 month	Resord Margayu	destroyed
24/11/2014	bridge those involved in illegal	< 1 week	Resord Susukan baru	recorded
24/11/2014	hunt	< 4 day	Resord Kuwala Penet	recorded
25/11/2014	bridge those involved in illegal	< 1 month	Resord Rantau Jaya	recorded
25/11/2014	Access illegal lane	< 1 day	Resord Kuwala Penet	active line
26/11/2014	animal snares	< 1 month	Resord Rantau Jaya	destroyed
26/11/2014	Access illegal lane	< 1 week	Resord Kuwala Penet	active line
27/11/2014	the perpetrators of illegal logging activities	0 day	Resord Margayu	recorded
27/11/2014	intelligence	0 day	Resord Margayu	recorded
03/12/2014	bird theft	< 1 bulan	Resord Sekapuk	Documented
03/12/2014	illegal logging	< 4 hari	Resord Sekapuk	Documented
03/12/2014	the invention of plastic waste	< 1 bulan	Resord Sekapuk	Documented
03/12/2014	animal hunting deer	< 1 bulan	Resord Sekapuk	Documented

03/12/2014	animal hunting deer	0 hari	Resord Sekapuk	Documented
04/12/2014	animal hunting deer	0 hari	Resord Sekapuk	Documented
04/12/2014	theft of birds and fish	0 hari	Resord Sekapuk	Documented
05/12/2014	Poaching	0 hari	Resord Sekapuk	Documented
19/12/2014	Fores fire 2 hectare	< 1 minggu	Resord Rantau Jaya	Documented
19/12/2014	former bicycle activity 3 pieces and footprint dog	< 1 hari	Resord Rantau Jaya	Documented
22/12/2014	camp thieves	< 1 bulan		Documented
22/12/2014	active track motorcycle in NP	< 4 hari	Resord Susukan baru	Documented
25/12/2014	active track motorcycle in NP	< 1 hari	Resord Susukan baru	Documented
25/12/2014	active track motorcycle in NP	< 4 hari	Resord Susukan baru	Documented
25/12/2014	animal hunting deer	< 4 hari	Resord Susukan baru	Documented

### 3. OFFENSES IN UJUNG KULON NP

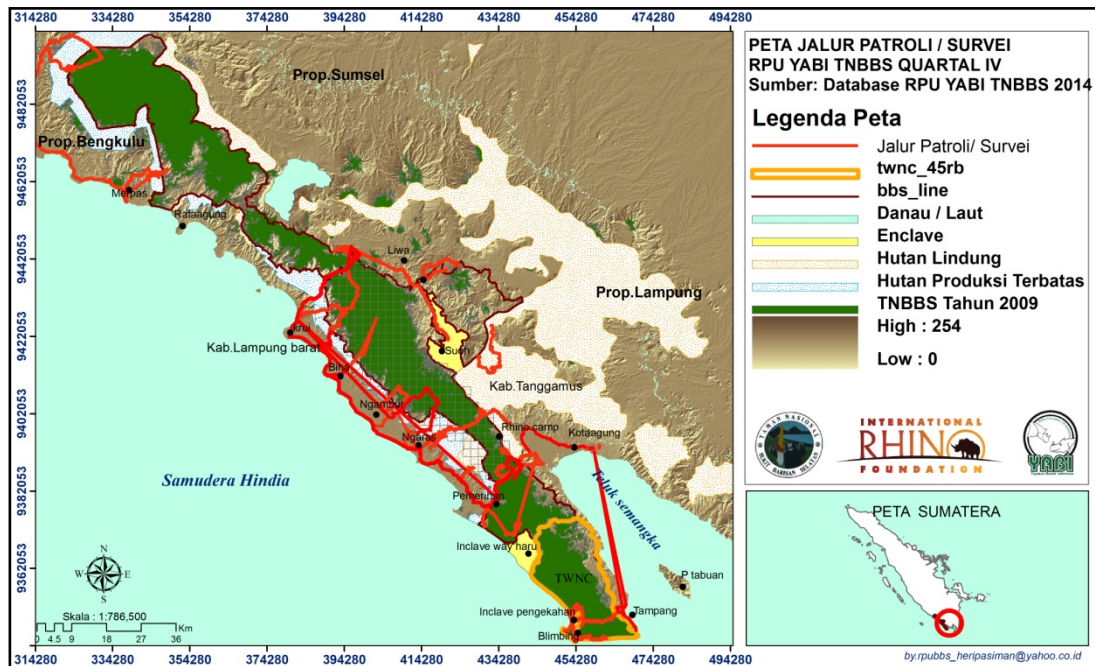
Date	Remarks <ul style="list-style-type: none"> <li>• Type of offense</li> <li>• Forest / WL produce recovered</li> <li>• Arm / Amunition recovered</li> <li>• People arrested</li> </ul>	Age	Location	Action Taken  Legal status / comments	address	evidence
15-10-14	Birds - 8 Pole former bird nets and Adhesives (Leugeut)	< 1 week	Blok cibareng kok	Destroyed	not found	Birds - 8 Pole former bird nets and Adhesives (Leugeut)
15-10-14	Honeybees theft by using a torch / flame	< 1 week	Blok ermokla	Destroyed	not found	2 bunches torch / ex-flame
02-11-14	Camp former thieves shrimp	< 1 week	Blok pangukusan	Destroyed	not found	hut / camp
09-11-14	Honeybee	< 4 day	Blok cikarang	Documented	not found	former fire
10-11-14	bird thieves	< 4 day	Blok cikarang	Destroyed	not found	net pole
11-11-14	bird thieves	< 1 month	Blok citelang	Destroyed	not found	net pole
12-11-14	bird thieves	< 1 month	Blok citengah	Destroyed	not found	bird cage
12-11-14	bird thieves	< 4 day	Blok citengah	Destroyed	not found	bird cage
12-11-14	Former theft honeybees	< 1 month	Blok citengah	Destroyed	not found	former fire
12-11-	bird thieves	< 1	Blok	Destroyed	not	hut / camp

14		month	citengah		found	
12-11-14	former deer theft	< 1 week	Blok cibunar	Documented	not found	Kancil
12-11-14	Former theft honeybees	< 1 week	Blok Karang ranjang	Destroyed	not found	hut / camp
14-11-14	theft shrimp	0 day	Blok tanjung sodong	Documented	3 people perpetrators came from the village Cegog	Documented
14-11-14	theft shrimp	< 1 week	Blok pangukusan	Destroyed	alleged perpetrators came from the village cegog	hut / camp
14-11-14	Katingting boat	0 day	Pangukusan	documented and expelled	alleged perpetrators came from the village cegog	Katingting boat
15-11-14	Destruction netting fence along the 7 boxes JaRhiSCA	< 1 week	Blok cirangsang	Documented	not found	Katingting boat
15-11-14	Theft netting fence JaRhiSCA	< 1 week	Blok cipunaga/Ermokla	Documented	alleged perpetrators came	Not found

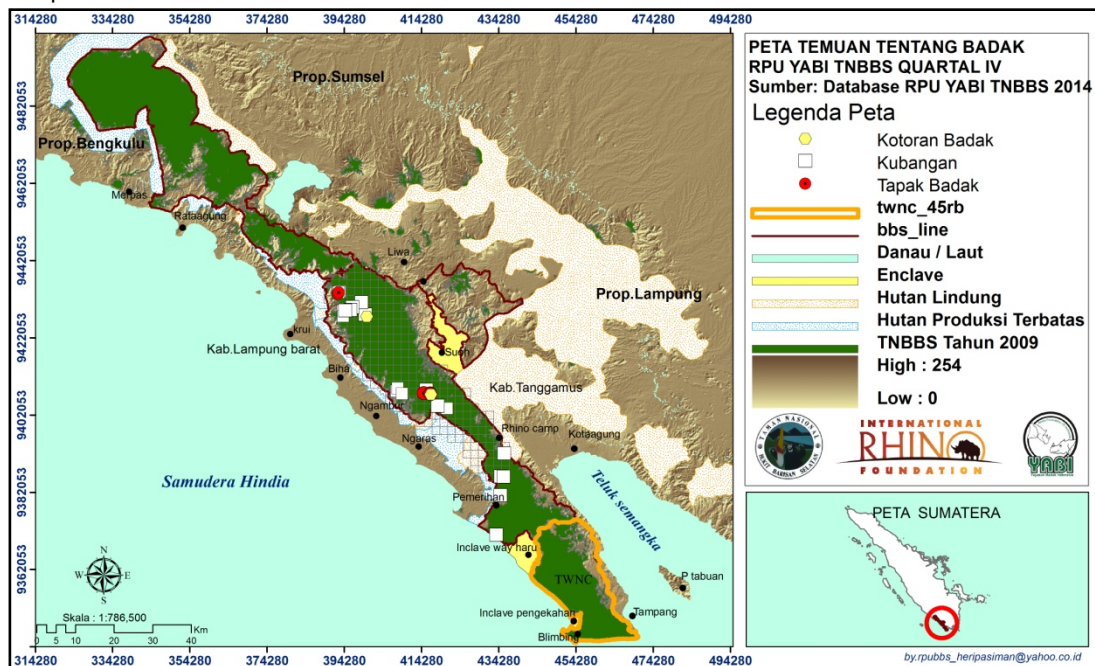
					from the village cegog	
15-11-14	theft shrimp	< 1 day	Blok pinang koling	Documented	4 people perpetrators came from the village Cegog	Not found
15-11-14	theft shrimp	< 1 day	Blok Bidur	Destroyed	alleged perpetrators came from the village rancecet	Hut/camp
16-11-14	theft shrimp	< 1 day	Blok ciramea	Destroyed	alleged perpetrators came from the village rancecet	Hut/camp

## ANNEX-3 : Maps of RPU's

### 1. Map of patrol route Q4 2014, in BBS NP

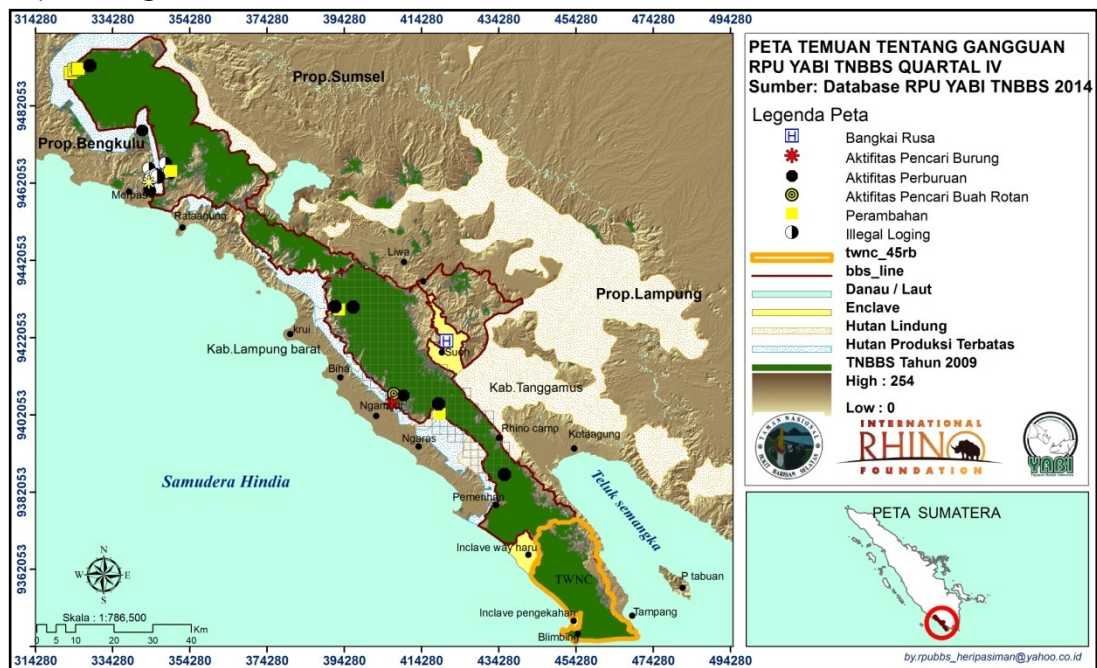


### 2. Map of rhino encountered Q4 2014, in BBS NP

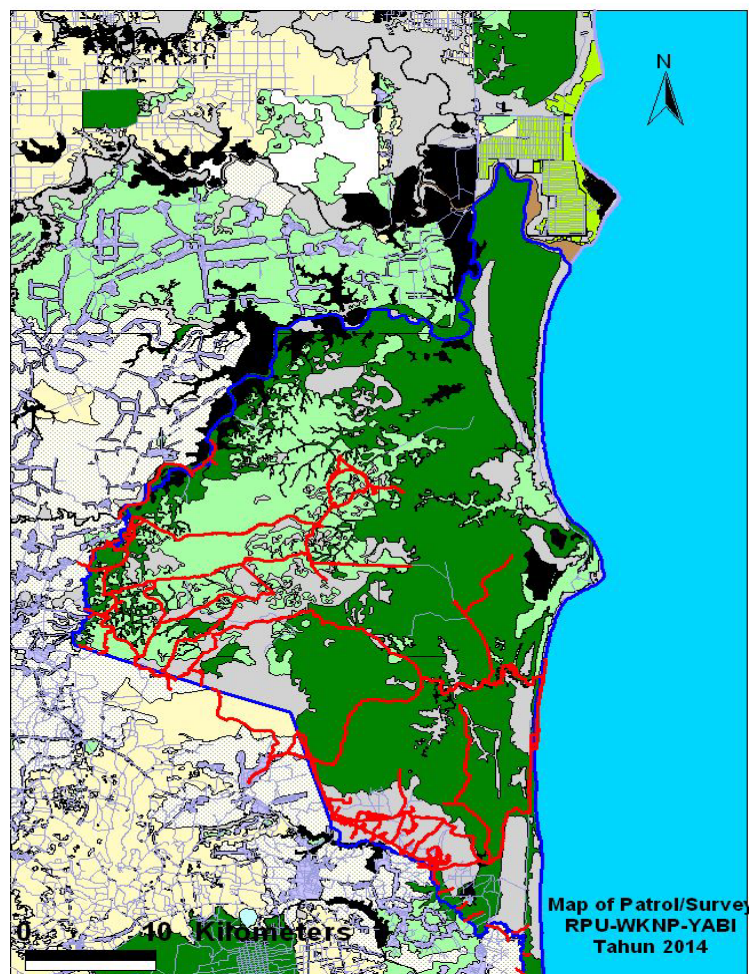




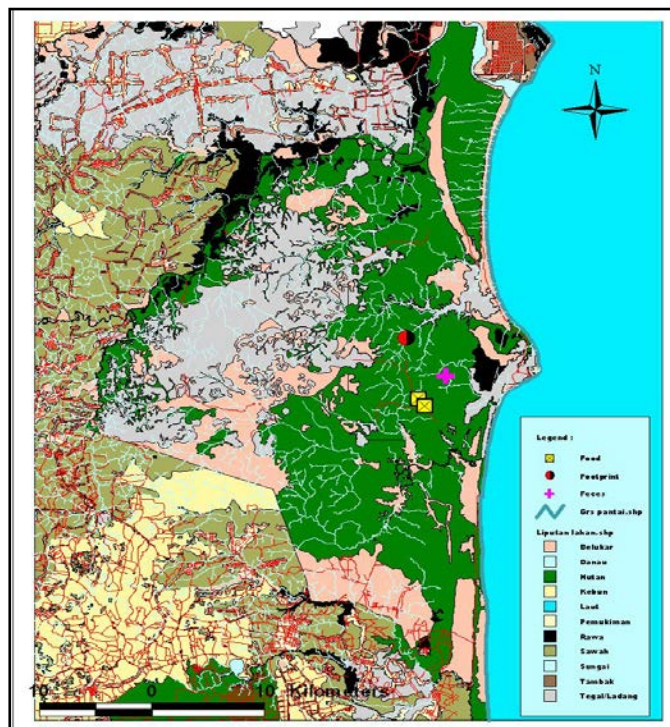
3. Map of Illegal Activities Encountered Q4 2014, in BBS NP



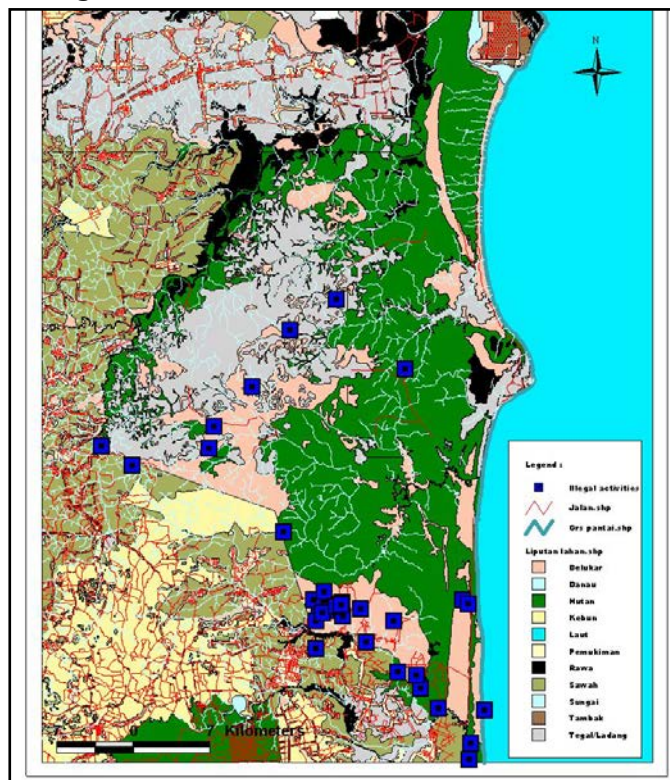
4. Map of Patrol and survey route Q4 2014, in WKNP



5. Map of rhino foot-print and other encountered Q4 2014, in WKNP.

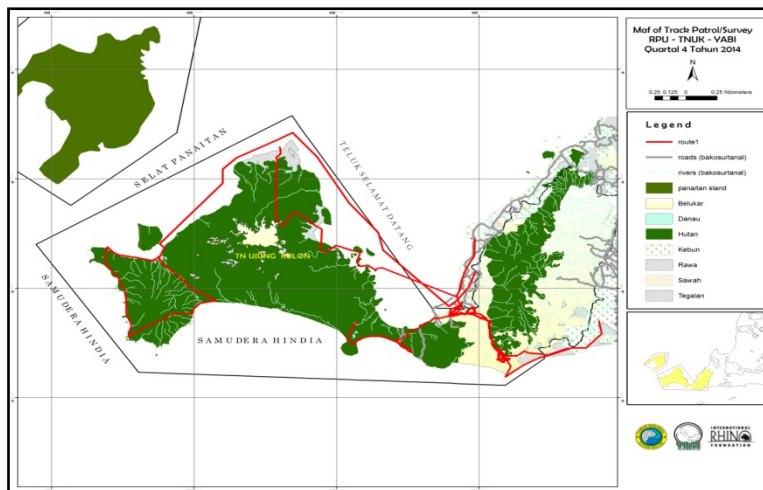


6. Map of Illegal activities encountered Q4 2014, in WKNP.

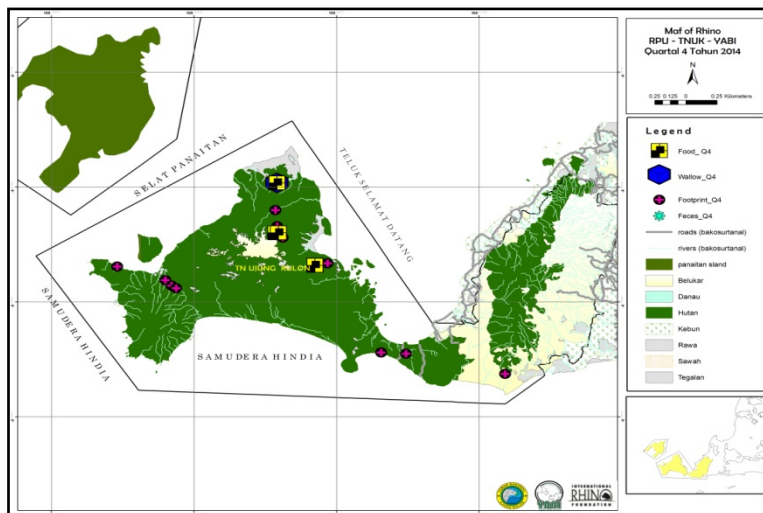




7. Map of Patrol and survey route Q4 2014, in UKNP



8. Map of rhino encountered Q4 2014, in UKNP



9. Map of Illegal activities encountered Q4 2014, in UKNP.

