

Table 9. Number of rhinos and births in Gorumara National Park, 2004 – 2014.

Year	# of rhinos	rhinos born
2006	27	3
2008	31	08
2010	35	05
2012	43	08
2014	50	07

Conclusions for West Bengal

While poaching to-date has been nominal in both Jaldapara and Gorumara National Parks, there can be no decrease in anti-poaching efforts and it remains a critical threat. It should be noted that when Kaziranga National Park is flooded, poachers tend to shift to West Bengal parks, which is a dangerous trend. In terms of population health, inbreeding depression may be an important factor for the rhinos in these parks. There is a need to determine how to limit or somehow control infighting among males that often leads to straying outside the parks (and subsequent rhino deaths). A number of options need to be explored, including building increased tolerance among local communities for straying rhinos and/or developing straying/rescue team to deal with straying/problem rhinos.

DUDHWA NATIONAL PARK – Vino Krishan Singh, I.F.S., Deputy Director, Dudhwa Tiger Reserve

Dudhwa National Park’s rhino program began in 1984, with two males and three females translocated from the outskirts of Pabitora Wildlife Sanctuary. These animals were joined by four females from Chitwan in 1985. The current rhino population in the park is 32: 10 males, 14 females, and 8 calves.

This globally important ecoregion is 68% woodland, 22% grassland, and 10% wetlands. The area includes Dudhwa National Park (660 sq. km., gazetted in 1977), Kishanpur Wildlife Sanctuary (203 sq. km.) and Katarniaghat Wildlife Division (550 sq. km.). Since 1987, Dudhwa has been one of the Project Tiger sites. Figure 32 shows a map of the park.

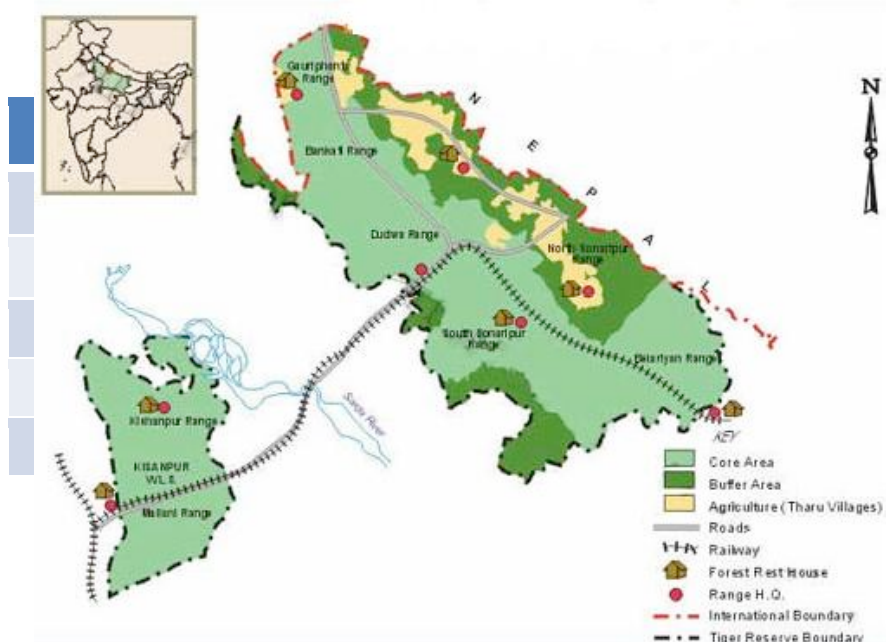


Figure 32. Map of Dudhwa National Park.

The rhinos are confined to a 27 sq. km. area within the park, surrounded by 24 km of five-strand solar-powered electric fence². There are two base stations, Salukapur and Base Camp, which house nine patrol teams with elephants.

Table 10. Known rhino population numbers in Dudhwa National Park 2005 – 2013.

Year	Male	Female	Calf	Total
2005	7	11	3	21
2007	7	11	5	23
2009	10	15	3	28
2011	9	15	6	30
2013	10	14	8	32

The known rhino population numbers from Dudhwa are shown in Table 10; known mortality is shown in Table 11. Of the known mortality, none of the deaths are attributable to poaching.

² Details of the rhino area location are not included here due to security concerns

Table 11. Known rhino mortality in Dudhwa National Park 2008 – 2013.

Year (from 2005 onwards)	# rhinos poached	# rhinos died naturally	# rhinos born
2008-09	0	0	3
2009-10	0	0	1
2010-11	0	0	3
2011-12	0	1	3
2012-13	0	4	4

Perceived threats to rhinos in Dudhwa include inbreeding, intra-specific conflict due to crowding, proximity to semi-porous international borders, and potential conflicts with humans if rhinos are released into open forest. The potential for poaching events also must be considered.

At the 1999 IUCN/SSC AsRSG meeting in Kaziranga National Park, it was recommended that there should be at least ten wild rhino populations in India with a minimum of 100 rhinos in each site. Feasibility studies have been carried out and the Bhadi area was recommended as a second site for rhinos in Dudhwa National Park. The area is 14 sq. km., and is comprised of 70% grassland and 30% woodland. The fencing for the area has been completed and the park is awaiting its new rhino population.

Park guards are using rhino-identification-based monitoring. Each guard has a guidebook with four photos of each rhino in the park; notes are entered on subsequent pages. SMART patrolling has been implemented to track where patrols are going. SMART results are posted in each office each month and patrols adjusted accordingly.

PLENARY DISCUSSION - THE MOST IMPORTANT ISSUES FACING THE REALIZATION OF IRV 2020

Workshop participants discussed the most important challenges facing the successful realization of IRV 2020. Each participant put his or her 'issues' on a large post-it note and in turn presented his or her ideas to the group. A smaller group then themed the issues, which fell under the following categories.