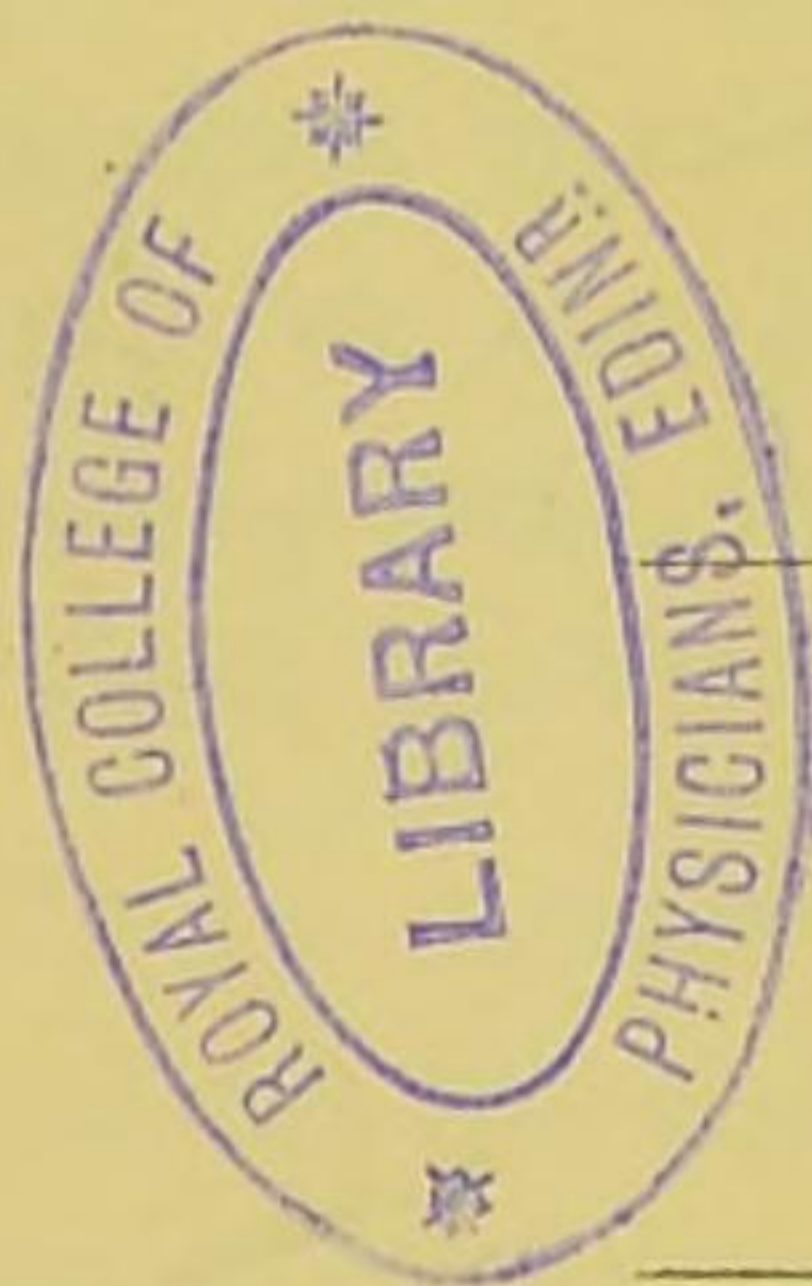


LIST  
OF  
THE VERTEBRATED ANIMALS  
NOW OR LATELY LIVING  
IN THE GARDENS  
OF THE  
ZOOLOGICAL SOCIETY  
OF LONDON.



---

EIGHTH EDITION.

1883.

---

PRINTED FOR THE SOCIETY,  
AND SOLD AT THEIR HOUSE IN HANOVER SQUARE.

LONDON:  
MESSRS. LONGMANS, GREEN, READER, AND DYER,  
PATERNOSTER ROW.

## PREFACE TO THE EIGHTH EDITION.

---

THE object of this List is to enable those interested in the living collection of the Zoological Society of London to ascertain what species of Vertebrated Animals have been represented in the Menagerie during the past twenty years. It is also of great use to enable the specimens exhibited from time to time to be labelled on a uniform system.

The first edition of the List was issued in 1862, and contained the names of all the animals that had been living in the Society's Gardens at any time during the previous year, with their habitats, and the dates and modes of their acquisition.

In the second edition, issued in 1863, the animals living in the Society's Gardens from the 1st of January to the end of May of that year were given in a similar form.

In the third edition, which was completed for press on the 1st of January, 1865, the names of all specimens received by the Society during 1864 were added to the List.

In the fourth and subsequent editions the names of all the vertebrated animals added to the Society's collection during the following years were inserted in their proper places.

In the present (eighth) edition of this Catalogue I have pursued exactly the same system, and have added the names

of all the animals that we have received up to the end of 1882, with the date and mode of acquisition of each specimen.

The result is a nearly complete catalogue of all the living Vertebrates received by the Society during the past twenty-two years. It is not, however, *quite* complete, as in the two first editions the references to some of the specimens which had been lost by death or departure were struck out. But commencing from January 1st, 1864, I believe that nearly every specimen received will be found to have been inserted in its proper place, although there may of course have been errors in the determination of the species.

For many years it has been my practice to bring before the scientific meetings of the Society short notices of the more important accessions to the Menagerie, with the object of calling attention to such as are of special interest. These notices are subsequently printed and published in the 'Proceedings' of the Scientific Meetings. Both our 'Proceedings' and 'Transactions' also contain frequent communications referring to specimens living, or that have previously lived, in the Society's Gardens. I thought that it would enhance the value of the List to add references to the 'Proceedings' and 'Transactions' in all these cases, so as to make a sort of index to numerous passages in our scientific publications that refer to specimens in the Society's collection.

When animals have been figured in our publications from specimens in the Gardens, a reference to the figure is likewise added.

The following Table gives the number of Species of each Class of Animals registered in the successive editions of this List, and thus to a certain extent indicates the progress of the Collection:—

	First Edition, 1862.	Second Edition, 1863.	Third Edition, 1865.	Fourth Edition, 1866.	Fifth Edition, 1872.	Sixth Edition, 1877.	Seventh Edition, 1879.	Eighth Edition, 1883.
Mammals ...	188	229	272	339	498	570	615	667
Birds .....	409	468	558	721	1044	1224	1329	1447
Reptiles .....	45	60	52	73	181	227	257	307
Batrachians .	17	24	23	25	35	39	41	48
Fishes.....	23	40	51	54	68	83	83	88
Total .....	682	821	956	1212	1826	2143	2325	2557

The woodcuts in this List have mostly already appeared in the Society's 'Proceedings.' Some of them, however, have been kindly lent to me for this work by the proprietors of 'Nature.'

P. L. S.

11 Hanover Square, W.,  
July 18th, 1883.

## LIST OF PREVIOUS EDITIONS.

---

1. List of Vertebrated Animals Living in the Gardens of the Zoological Society of London. 8vo. 1862. (pp. 100.)
2. List of Vertebrated Animals Living in the Gardens of the Zoological Society of London. (Second Edition.) 8vo 1863. (pp. 120.)
3. List of Vertebrated Animals Living in the Gardens of the Zoological Society of London. (Third Edition.) 8vo. 1865. (pp. 148.)
4. List of Vertebrated Animals Living in the Gardens of the Zoological Society of London. (Fourth Edition.) 8vo. 1866. (pp. 204.)
5. Revised List of the Vertebrated Animals now or lately Living in the Gardens of the Zoological Society of London. 8vo. 1872. (pp. 399)
- 5<sup>a</sup>. Revised List of the Vertebrated Animals now or lately Living in the Gardens of the Zoological Society of London.—Supplement, containing Additions received in 1872, 1873, and 1874. 8vo. 1875. (pp. 54.)
6. Revised List of the Vertebrated Animals now or lately Living in the Gardens of the Zoological Society of London. (Sixth Edition.) 8vo. 1877. (pp. 519.)
7. List of the Vertebrated Animals now or lately Living in the Gardens of the Zoological Society of London. (Seventh Edition.) 8vo. 1879. (pp. 579.)
- 7<sup>a</sup>. List of the Vertebrated Animals now or lately Living in the Gardens of the Zoological Society of London.—First Supplement, containing Additions received in 1879. 8vo. 1880. (pp. 71.)

427. *Elephas africanus*, Blum. African Elephant.  
*Hab.* Africa.

a. Male (*Jumbo*). Received in exchange from the Jardin des  
 Plantes, Paris, June 26, 1865. See P. Z. S. 1865, p. 510.

b. Female (*Alice*). Purchased, Sept. 9, 1865. See P. Z. S.  
 1865, p. 676.

c. Male (*Jingo*). Purchased, July 8, 1882.

## Order IX. UNGULATA.

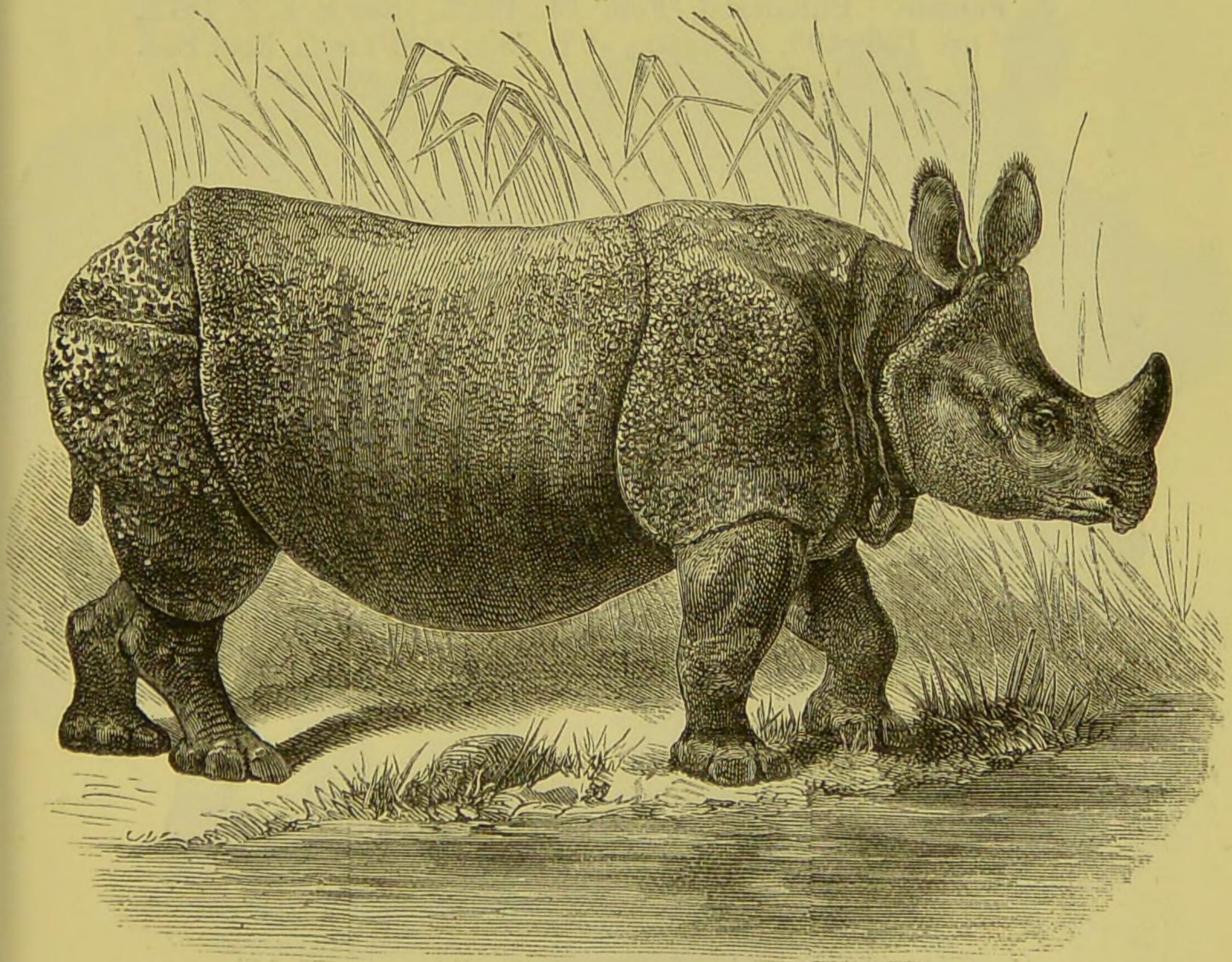
### Suborder I. PERISSODACTYLA.

#### Family RHINOCEROTIDÆ.

##### Genus RHINOCEROS.

428. *Rhinoceros unicornis*, Linn. Indian Rhinoceros. (Fig. 12.)  
*Hab.* India.

Fig. 12.



*Rhinoceros unicornis* ♂.

- a. Male. Purchased, Sept. 20, 1834. See P. Z. S. 1834, p. 41, and Trans. Zool. Soc. iv. p. 31. Died Sept. 19, 1849.
- b. Female. Purchased, July 17, 1850. Died Dec. 14, 1873. Cf. Garrod, P. Z. S. 1874, p. 2.
- c. Male. Presented by A. Grote, Esq., F.Z.S., July 25, 1864. See P. Z. S. 1864, p. 373, and Trans. Zool. Soc. ix. p. 645, pl. xcv.
- d. Female. Brought from Calcutta by the Society's collector, July 25, 1864. Sent in exchange to the Jardin des Plantes, June 20, 1865.

429. *Rhinoceros sondaicus*, Cuv. Javan Rhinoceros.

*Hab.* Java.

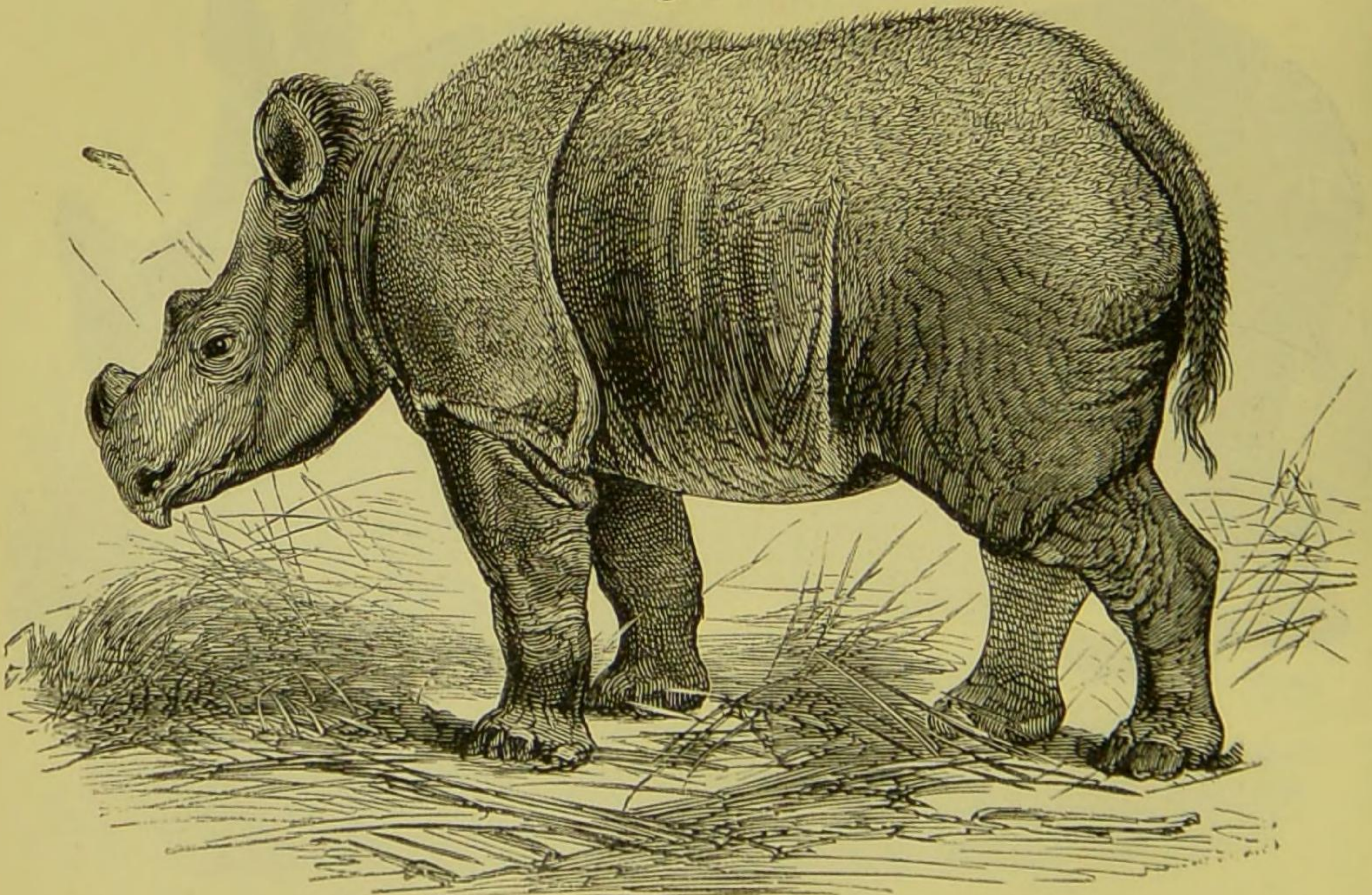
- a. Male. Purchased, March 7, 1874. See P. Z. S. 1874, p. 182, pl. xxviii., and Trans. Zool. Soc. ix. p. 649, pl. xcvi.

430. *Rhinoceros lasiotis*, Sclater. Hairy-eared Rhinoceros.  
(Fig. 13.)

*Hab.* Chittagong.

- a. Female. Purchased, Feb. 14, 1872. See P. Z. S. 1872, pp. 185, 493, pl. xxiii., et p. 790; and Trans. Zool. Soc. ix. p. 652, pl. xcvi.

Fig. 13.



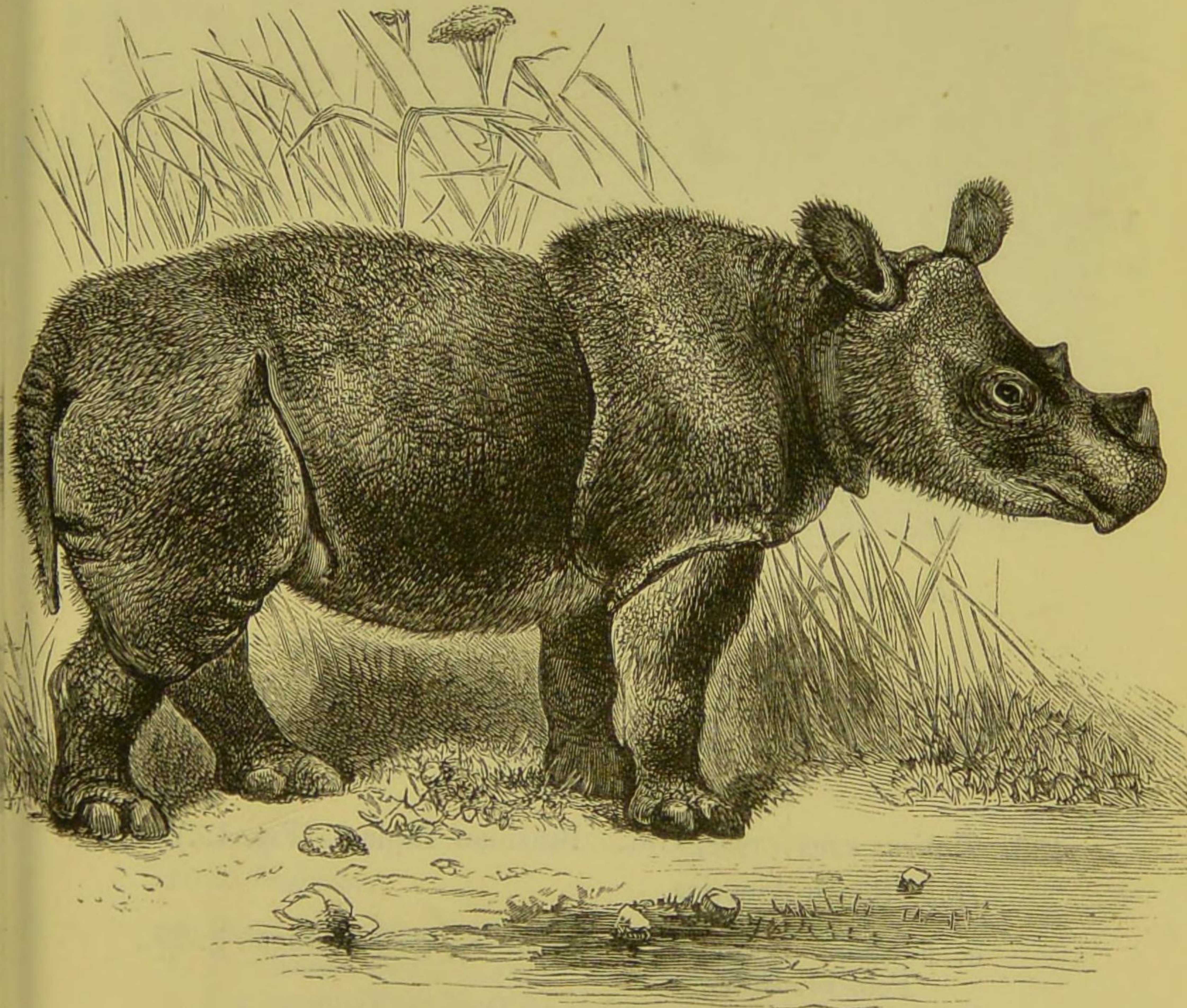
*Rhinoceros lasiotis*. ('Nature,' vol. v. p. 427.)

431. *Rhinoceros sumatrensis*, Cuvier. Sumatran Rhinoceros.  
(Fig. 14.)

*Hab.* Malacca.

- a.* Female. Purchased, Aug. 21, 1872. See P. Z. S. 1872, p. 790, pl. LXVII. Died Sept. 21, 1872. See Garrod, P. Z. S. 1873, p. 92.
- b.* Female. Deposited, July 14, 1875, and subsequently purchased. See P. Z. S. 1875, p. 528, and Trans. Zool. Soc. vol. ix. p. 650, pl. xcvi., and vol. x. p. 411.
- c.* Female. Deposited, Oct. 4, 1878. See P. Z. S. 1878, p. 790.
- d.* Male. Deposited, March 20, 1879. Died April 6, 1879. See P. Z. S. 1879, p. 308.

Fig. 14.



*Rhinoceros sumatrensis.* ('Nature,' vol. vi. p. 518.)

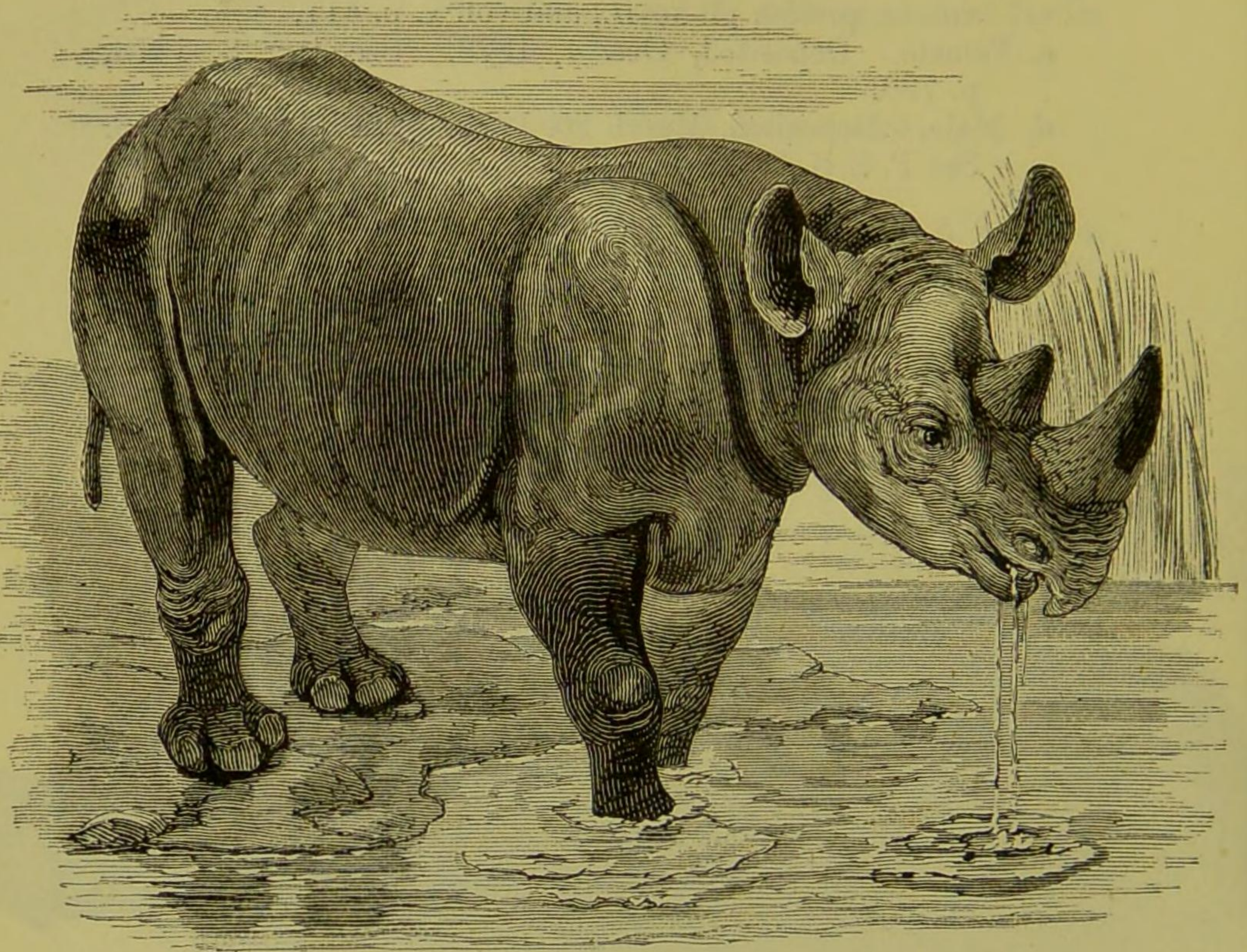


432. *Rhinoceros bicornis*, Linn. Two-horned Rhinoceros.  
(Fig. 15.)

*Hab.* Africa.

- a.* Purchased, Sept. 11, 1868. From Upper Nubia. See  
P. Z. S. 1868, p. 529, pl. xli., and Trans. Zool. Soc. ix.  
p. 655, pl. xcix.

Fig. 15.



*Rhinoceros bicornis* ♂. ('Nature,' vol. v. p. 427.)

### Family TAPIRIDÆ.

#### Genus TAPIRUS.

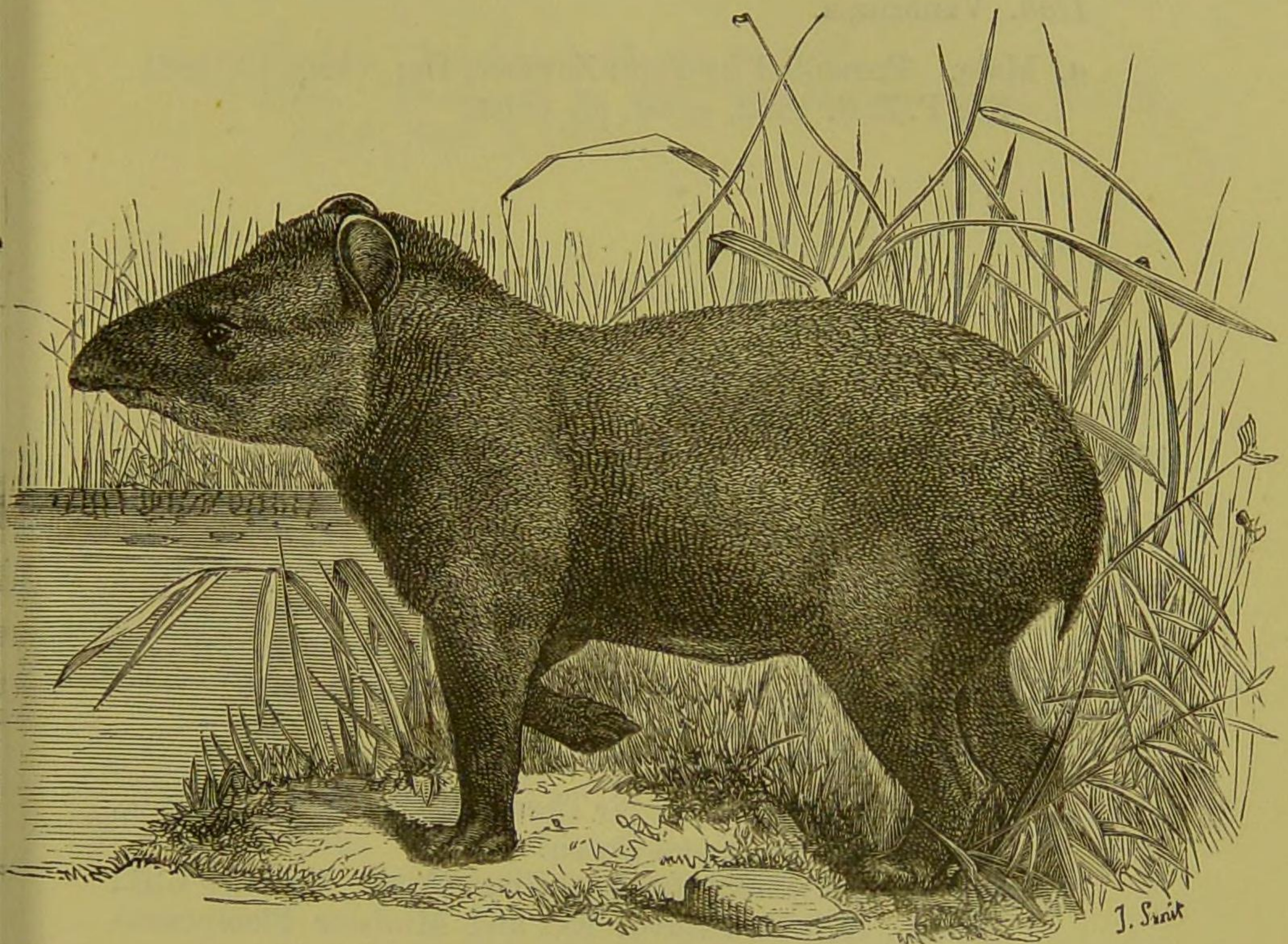
433. *Tapirus americanus*, Gm. Brazilian Tapir. (Fig. 15.)

*Hab.* South America.

- a.* Female. Presented by the late King of Portugal, F.Z.S.,  
Feb. 14, 1857.  
*b.* Male. Received in exchange, Dec. 11, 1860.  
*c.* Deposited, July 25, 1867.

- d.* Male; *e.* Female. Purchased, July 30, 1869. See P. Z. S. 1872, p. 636, pl. LII.  
*f.* Female. Purchased, Jan. 16, 1873. From Paraguay. See P. Z. S. 1873, p. 193.  
*g.* Female. Hybrid between female of this species and male *Tapirus roulini*. Born in the Menagerie, Feb. 12, 1882. See P. Z. S. 1882, p. 311.

Fig. 16.



*Tapirus americanus.* (P. Z. S. 1873, p. 194.)

434. *Tapirus roulini*, Fischer. Hairy Tapir.  
*Hab.* Columbia.

*a.* Male. Received in exchange, May 25, 1878. See P. Z. S. 1878, p. 631, pl. xxxix.

435. *Tapirus indicus*, Desm. Malayan Tapir.  
*Hab.* Malacca.

*a.* Purchased, March 17, 1840.  
*b.* Purchased, Dec. 24, 1850. Died, June 11, 1851.  
*c.* Purchased, May 20, 1851. Died, June 14, 1851.  
*d.* Purchased, July 8, 1882.

436. *Tapirus bairdi* (Gill). Baird's Tapir.  
*Hab.* Central America.  
*a.* Young male. Purchased, Aug. 15, 1871. See P. Z. S. 1871, p. 626, pl. L.  
*b.* Female. Purchased, April 13, 1872. From Corinto, Central America. See P. Z. S. 1872, p. 635, pl. LI.
437. *Tapirus dowii* (Gill). Dow's Tapir.  
*Hab.* Venezuela.  
*a.* Male. Presented by Fritz Zurcher, Esq., Aug. 13, 1881. See P. Z. S. 1882, p. 39, pl. XXIII.

## Family EQUIDÆ.

## Genus EQUUS.

438. *Equus tæniopus*, Heugl. African Wild Ass.  
*Hab.* Abyssinia.  
*a.* Purchased, Sept. 19, 1864. See P. Z. S. 1864, p. 374.  
*b.* Female. Purchased, May 26, 1881.
439. *Equus onager*, Pall. Asiatic Wild Ass, or Onager.  
*Hab.* South-western Asia.  
*a.* Female. Presented by Sir Thomas Erskine Perry, F.Z.S., May 5, 1849. From Cutch.  
*b.* Female. Presented by the Hon. C. A. Murray, C.B., F.Z.S., H.B.M.'s Envoy Ex. and Minister Plenipotentiary, March 11, 1859. From Persia.  
*c.* Presented by Capt. Henry Lowther Nutt, Dec. 23, 1873. From Cutch. See P. Z. S. 1874, p. 1.  
*d.* Hybrid between this species and *E. hemippus*, June 21, 1878.
440. *Equus hemippus*, Geoffr. St.-Hil. Hemippe.  
*Hab.* Syria.  
*a.* Female. Presented by the late W. Burkhardt Barker, Esq., Oct. 7, 1854.  
*b.* Male; *c.* Female. Received in exchange, May 8, 1868. See P. Z. S. 1868, p. 404.  
*d.* Male. Born in the Menagerie, May 12, 1869.  
*e.* Male. Deposited, April 28, 1871.