

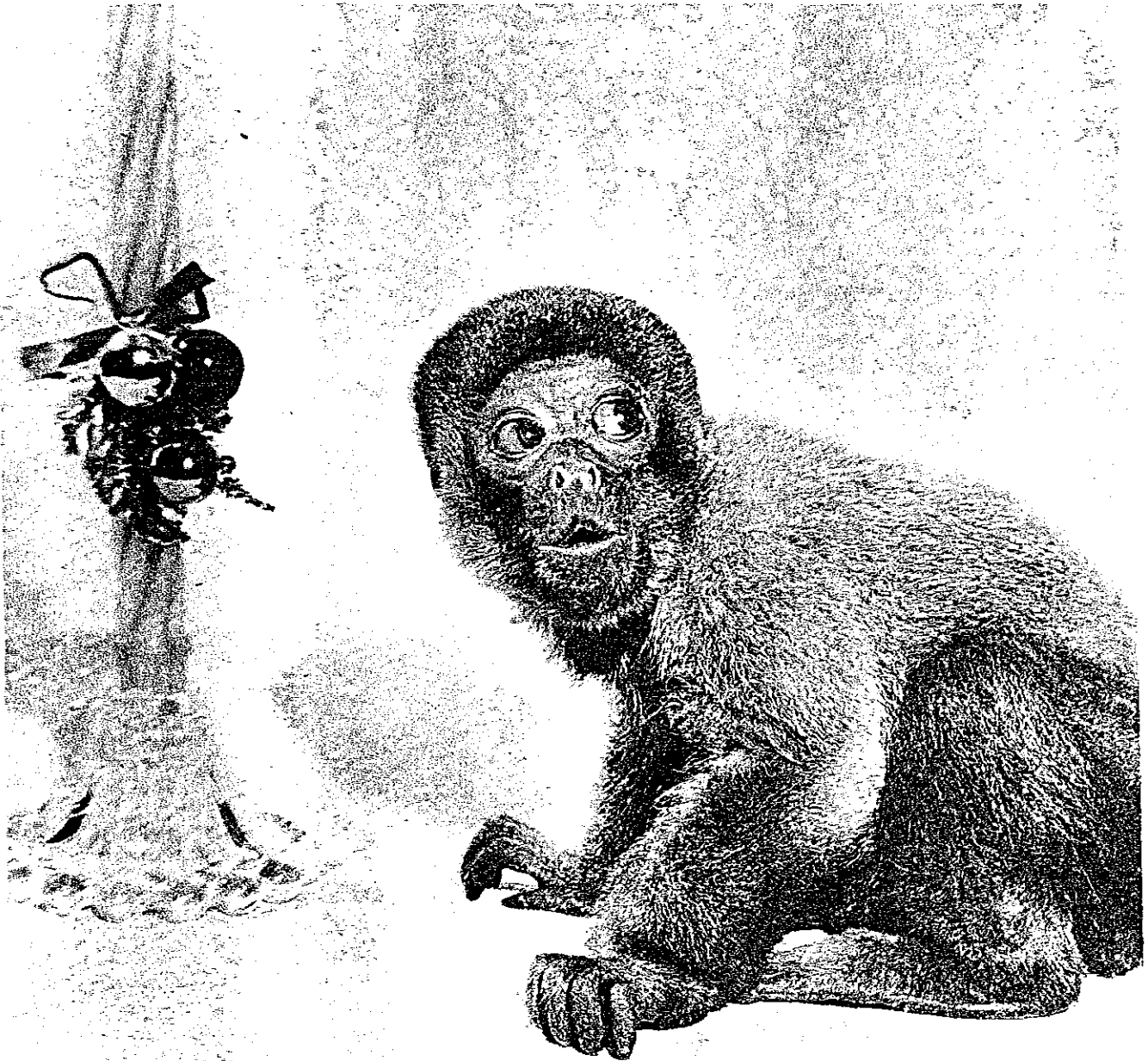


Milwaukee Zoo news

Volume 7

December, 1958

No. 2



Hello there. I'm Bobo, the woolly monkey, the new greeter at the Zoo. All the animals and birds and all the staff and the officers of the Zoological society asked me to wish all of you the Merriest of Christmases and the Happiest of New Years.

3rd Kangaroo Was "Bonus"

for Melbourne

The Washington park zoo expected two new kangaroos in October and got three.

The extra kangaroo was a "bonus" not only for the zoo but also for Melbourne, the zoo's only kangaroo, a male. The kangaroos were needed as companions for Melbourne and all three new ones are females. It is hoped that a romance will develop.

The animals came from Tom Rooney, director of the San Francisco Sport and Boat Show. Rooney said after the kangaroos' arrival that the extra one was a "surprise dividend." The kangaroos were acquired for the zoo by the Evinrude motors division of the Outboard Marine Corp. They are Matilda, age 2; Victoria, 1½, and Goldie, 4 months.

All the kangaroos-Melbourne, too, are descendants of Rooney's kangaroo, Sydney, a television performer. Melbourne was brought here April 10, 1957, when he was 1 year old.

The three females were flown from San Francisco to Midway airport in Chicago. Ray Callahan, Washington park head keeper, and Walter Gaulke, who cares for Melbourne, met the kangaroos with a truck and brought them here in a crate.

Two of the zoo's older residents have died within recent months. They were Harriet, the prolific matriarch of the moose herd, and Bomba, the towering male giraffe.

Harriet died of leukemia, according to blood tests made by veterinarians. It had been diagnosed a week before her death. She was about 7 years old and had been at the zoo since 1951. She and Christie were the beginnings of the zoo's famed herd of moose. Harriet had eight calves, five of which are living.

Bomba, who stood 15 feet tall, was 21 years old, considered an advanced age for a giraffe. Like previous giraffes at the park, he had had internal parasites for years, but appeared normal until he died. He probably died of a heart attack.

The A. O. Smith Corp., has donated \$15,000 for a herd of new giraffes. The purchase will be made when facilities are ready at the new zoo.



THIS IS THE EXTRA kangaroo that arrived at the zoo recently. It may someday be the bride of Melbourne. Goldie, a 3 month old female, was held by keeper Walter Gaulke, who cares for Melbourne. The zoo expected two female kangaroos and Goldie came as a surprise bonus.

Smith Re-elected Society Head at Meeting

Larry H. Smith was re-elected president of the zoological society at the society's annual meeting in October, held at the Memorial Center.

Other officers re-elected were C. P. Fox, first vice-president; Robert T. Foote, second vice-president, and Allen W. Williams, secretary-treasurer.

Also named to the board of directors were: Joseph Carpenter, Philip H. Dorr, Otto R. Kuehn, George D. La Budde, William A.

Lohse, Philip W. Orth, Jr., Frederick L. Ott, H. S. Peck, William R. Pollock, Jr., Herman T. Rediske, A. D. Robertson, Richard H. Teweles, Harold S. Vincent, Albert O. Vogel, George L. Waetjen, Frederick C. Winding and R. C. Zimmerman.

Howard W. Gregg, general manager of Parks, Milwaukee county park commission, reported on building progress at the 148 acre new zoo tract at W. Bluemound rd., and N. Barnekow ave. He said the zoo was 15% complete and would require two or three more years of work.

Gregg gave this rundown on specific building projects:

Monkey island winter quarters-20% complete.

Zoo Director on European Purchase Tour

Zoo Director George Speidel is on a six week trip through Europe for the Zoological Society of Milwaukee county to purchase animals for the new zoo. It already has resulted in the purchase of two rare Indian rhinoceroses.

Speidel, accompanied by his wife Mary, and their son George, Jr., 16, left Nov. 9. They are stopping at zoos in Rome, Munich, Stuttgart, Frankfurt, Cologne, Hanover, Hamburg, Copenhagen, Rotterdam, Amsterdam, Antwerp and Paris. They are expected to return about Dec. 22.

Larry H. Smith, zoological society president, said that the two new rhinos will be shipped here next spring. They cost \$15,000 each. They are a two year old male named Pindia, which weighs about 2,000 pounds and comes from the zoo in Basel, Switzerland, and a one year old female named Mohinija, which weighs about 900 pounds and is from the Whipsnade zoo near London, England.

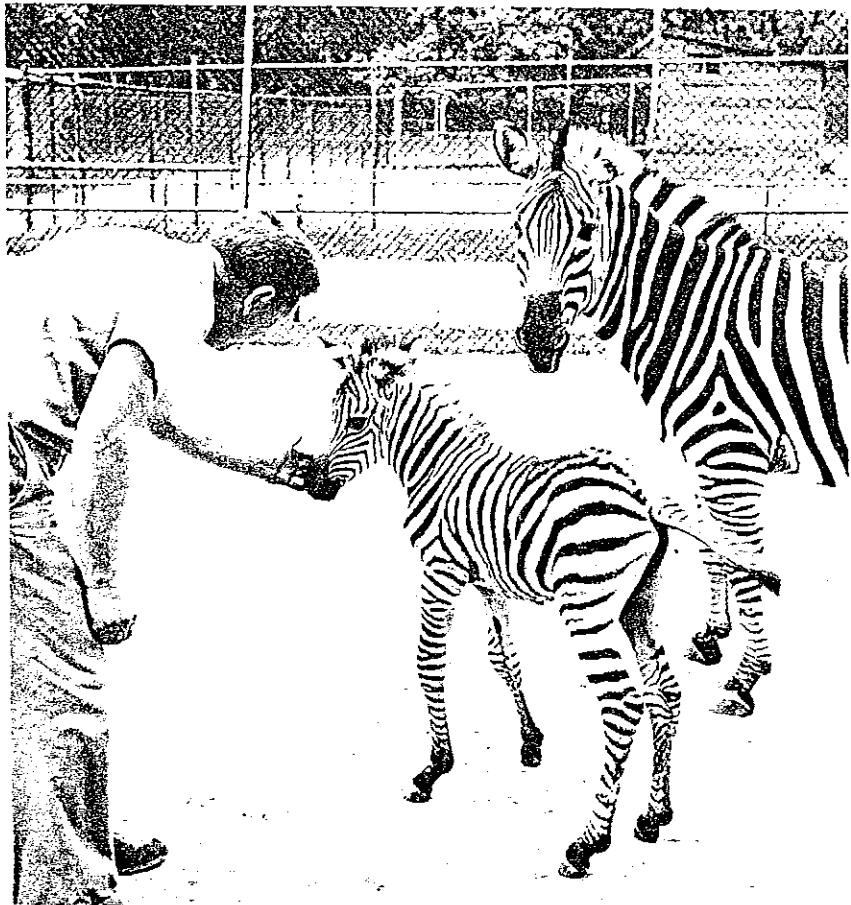
The rhinos will be transported to London and from there they will be taken by ship to Montreal, Que. At Montreal, the zoological society hopes to put the animals aboard the first Milwaukee bound ship through the St. Lawrence seaway.

Contributions totaling \$17,000 were earmarked for the Indian rhinos during the zoo drive two years ago. The difference will be made up from other society funds.

Speidel reported via transatlantic telephone that the animals were in very good shape. Rhinos at maturity weigh between 10,000 and 12,000 pounds. There are only five Indian rhinos at United States zoos-at Chicago, Philadelphia and St. Louis.

Zoo experts believe that there may be as few as 200 Indian rhinos still living in a wild state in Assam, in northeastern India.

When the rhinos arrive they will be temporarily housed at the antelope house at the Washington park zoo and then moved to the



STRIPES CONTINUE TO be in style at the zoo. A new zebra colt has raised the zoo's zebra population to five. The youngster above has been named Pepy by keeper Harold Borkenhagen. The colt is the daughter of Sepy (shown) and Sarge.

new zoo, when quarters are ready for them.

Mohinija and Pindia are the first Indian rhinos to be born in captivity.

letter to the family.

Contributions may be sent to the zoo office at 4500 W. Vliet st., Milwaukee, Wis.

New Members

New members of the Milwaukee County Zoological Society are William L. Dow, 4501 W. Greenfield ave., and Roy Gromme, 2842 N. 92nd st.

Members Reminded of Memorial Fund

The zoological society wishes to remind its members and the public of its memorial fund. Contributions given to the society as a memorial go into a special account to be used for the purchase of new zoo animals. The contributions are acknowledged by a

Milwaukee Zoo News

Published by the Zoological Society of Milwaukee County for the Washington Park Zoo which is under supervision of the Milwaukee County Park Commission

BOARD OF DIRECTORS OF ZOOLOGICAL SOCIETY

OFFICERS

Larry H. Smith President
Charles P. Fox 1st Vice President
Robert T. Foote 2nd Vice President
Allen W. Williams Secretary-Treasurer
George Speidel,
..... Director, Zoological Gardens

DIRECTORS

Joseph Carpenter, Phillip H. Dorr, Robert T. Foote, Charles P. Fox, Otto R. Kuehn, George D. La Budde, William A. Lohse, Philip W. Orth, Jr., Frederick L. Ott, H. S. Peck, William R. Pollock, Jr., Herman T. Rediske, A. D. Robertson, Larry H. Smith, Richard H. Teweles, Harold S. Vincent, Albert O. Vogel, George L. Waetjen, Allen W. Williams, Frederick C. Winding, R. C. Zimmerman

THE MILWAUKEE ZOO NEWS
Zoological Society of
Milwaukee County
4500 W. Vliet St.
Milwaukee 8, Wis.

Milwaukee Public Library
Acquisitions Division
814 W. Wisconsin Ave.
Milwaukee 5, Wis.

Non-Profit
U.S. Postage
PAID
Milwaukee, Wis.
Permit No. 4073

POSTMASTER: FORM 3547 REQUESTED

Zoo Railroad Thrills 20,000 in Brief Season

October 5, marked the opening day for the public of the first attraction at the new zoo, The Milwaukee County Zoo Scenic Railway & Transportation Co., --The Zoo line for short.

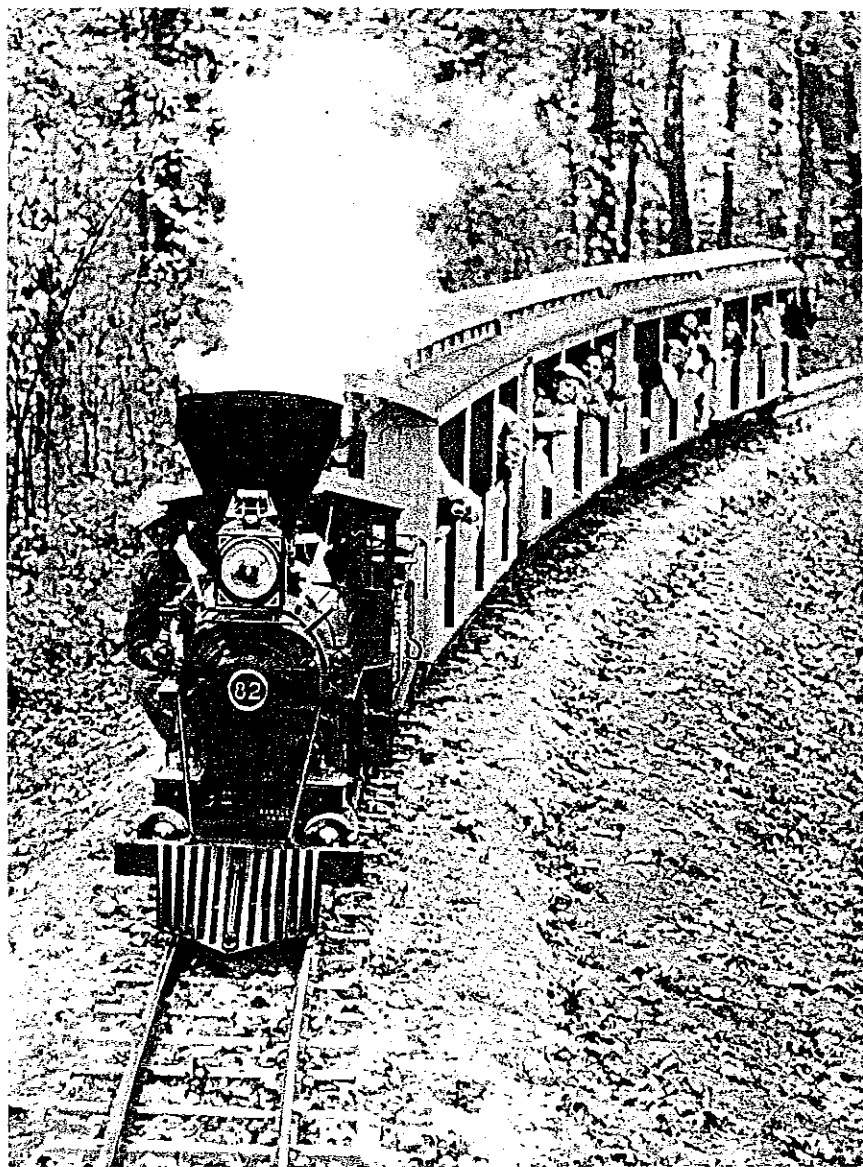
Between Oct. 5, and Nov. 23, when the Zoo line had to close down for the winter, a total of 20,247 persons rode on the miniature railroad. It was operated on weekends only when weather permitted, for a total of 10½ days.

A breakdown showed that 11,737 children and 8,510 adults were passengers. Children's tickets were 15 cents each and adults', 25 cents. Total revenue was \$3,888.05.

The \$51,000 train was the gift of The Journal Company, publisher of The Milwaukee Journal and operator of stations WTMJ and WTMJ-TV. It was given by The Journal Company on behalf of its employees. Profits from its operation will go for the betterment of the zoo.

The Zoo line has five coaches and diesel and steam locomotives. About one-fourth scale, it runs on a one and one-fourth mile line through the zoo woods, across a trestle, past a lake, the bear dens and other zoo areas under construction.

The public opening was preceded by a golden spike ceremony, marking the completion of the railroad. More than 100 persons who attended got to ride the train and participated in a "gandy dancers" lunch.



SMOKE PUFFED FROM the steam locomotive as children and adults got their first rides on the Zoo line. About one-fourth scale, the miniature train runs on a one and one-fourth mile route through the new zoo. It was a gift of The Journal Company.