

179. Further Notes on Ancient Human Artefacts Found near Harbin.

By Shigeyasu TOKUNAGA and Nobuo NAORA.

(Comm. by H. YABE, M.I.A., Dec. 12, 1933.)

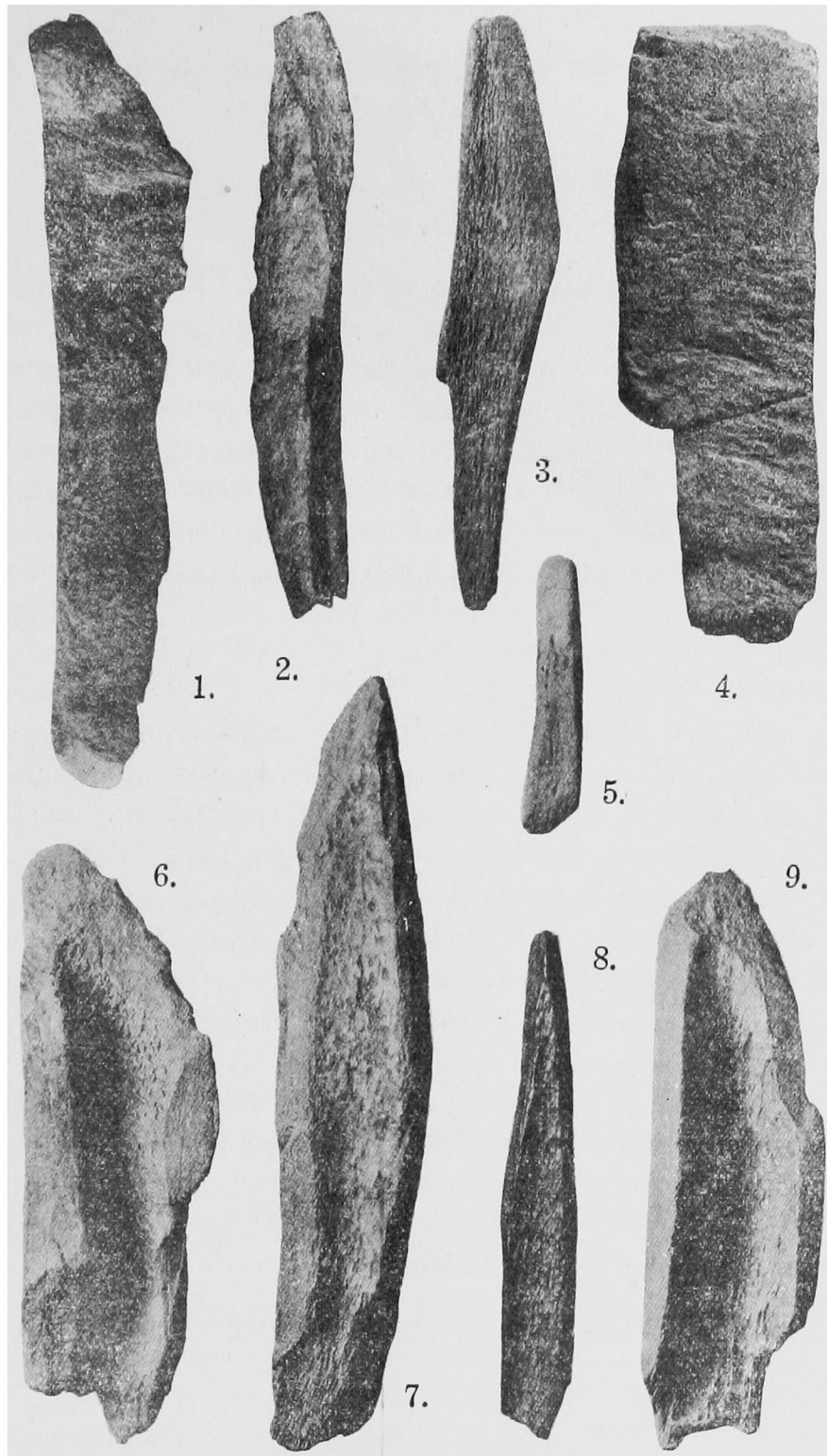
After the publication of our first paper "Fossil Mammals and Human Artefacts excavated near Harbin, Manchukuo,"¹⁾ we have received a lot of the findings from the excavated field near Harbin, and a further investigation of the materials has revealed many facts of particular interest. First of all, there are twenty bone implements, which give no room for doubting that they were manufactured and used by ancient man. They are of many sorts, being varied in shape as shown in the annexed figures; some remind us of cleaver (figs. 1-3), and the others look like spear head (figs. 6-9), chisel (fig. 5) and wedge (fig. 4). Besides, there are several pieces of bone bearing traces of partly drilled holes. Numerous crushed bones found at the spots of our excavation are believed by us to be remnants of ancient foodstuffs.

Findings of the utmost interest of our excavation are two specimens showing engraving thereon; it is, however, regrettable that the lines are partly so obscured as shown in figured one (fig. 10) that we cannot cipher what they really represent.

In addition, several fragments of charcoal dug out from beneath the stratum containing the articles cited above together with many animal remains may give a clue for solving the question considering ancient man used fire.

The provisional list of fossils found in association with the human artefacts given in our former report is now considerably enlarged, comprising 39 species of mammals and 4 species of plants as enumerated below, beside a piece of fish remain, bones of bird and an insect. Surveying these all, we have come to the conclusion that they may belong to the upper part of the Middle Pleistocene.

1) Proc. 9 (1933), 404-406.



Figs. 1-9. Bone Implements Found near Harbin. $\frac{1}{2}$

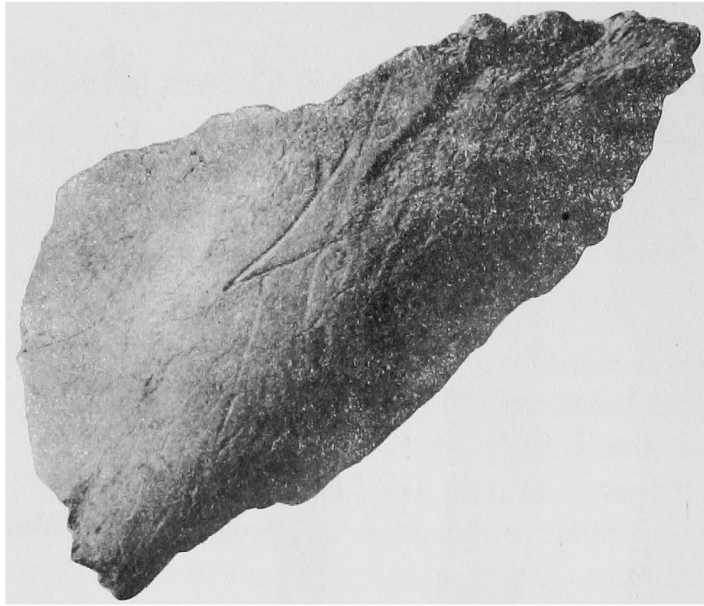


Fig. 10. Fragment of Engraved Bone Found near Harbin.

Mammals :

Canis lupus L., *C. sp. a*, *C. sp. b*, *C. sp. c*, *Hyaena ultima* Matsumoto, *Felis sp.*, ? *Pseudosciurus sp.*, ? *Tamias sp.*, *Arvicola sp.*, *Microtus sp. a*, *M. sp. b*, *Siphunens sp. a*, *S. sp. b*, *Ochotonoides cfr. complicidens* Boule et Teilhard, *Moschus sp.*, *Capreolus manchuricus* Nack., *C. sp.*, *Rusa sp.*, *Pseudaxis grayi* Zdansky, *Cervus (Euryceros) cfr. pachysteus* Young, *Cervus elaphus* L., *Cervus xanthopygus* A. M.-Edwards, ? *Rangifer tarandus* L., *Megaceros sp.*, *Cervus (Sika) nippon manchuricus* Swinhoe, *Palaeotragus sp.*, ? *Gazella prjewalskii* Buchner, *G. sp.*, *Sus cfr. lydekkeri* Zdansky, *Sus sp.*, *Rhinoceros tichorhinus* Cuv., *R. cfr. sinensis* Owen, *R. sp.*, *Bubalus sp.*, *Bos. primigenius* Boj., *Bison priscus*, *B. exguus* Matsumoto, *Equus hemionus* Pallas, *E. sp.*, *Elephas primigenius* Blum.

Plants :

Trapa natans L., *Betula alba* L., *Salix sp.*, *Juglans sp.*, *Hordeum sp.*