

LECTURES  
ON  
COMPARATIVE ANATOMY;

IN WHICH ARE EXPLAINED

THE PREPARATIONS  
IN  
THE HUNTERIAN COLLECTION.

ILLUSTRATED BY ENGRAVINGS.

TO WHICH IS SUBJOINED,

SYNOPSIS SYSTEMATIS REGNI ANIMALIS,

NUNC PRIMUM EX OVI MODIFICATIONIBUS PROPOSITI.

By SIR EVERARD HOME, BART.

V.P.R.S. F.S.A. F.L.S.

SERJEANT SURGEON TO THE KING; SURGEON TO THE ROYAL HOSPITAL, CHELSEA; SENIOR SURGEON TO ST. GEORGE'S HOSPITAL; HONORARY PROFESSOR TO THE ROYAL COLLEGE OF SURGEONS; TRUSTEE TO THE HUNTERIAN COLLECTION; PROPRIETOR OF THE ROYAL INSTITUTION; CORRESPONDING MEMBER OF THE ROYAL INSTITUTION OF FRANCE; MEMBER OF THE ROYAL SOCIETY IN GOTTINGEN; MEMBER OF THE PHYSICO-MEDICAL SOCIETY OF ERLANG; HONORARY MEMBER OF THE MEDICAL SOCIETY, PHILADELPHIA; HONORARY MEMBER OF THE ROYAL MEDICAL SOCIETY OF EDINBURGH; CORRESPONDING MEMBER OF THE MEDICAL SOCIETY, DUBLIN.

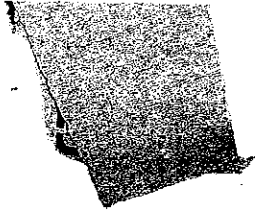
IN FOUR VOLUMES.

VOL. IV.

LONDON:

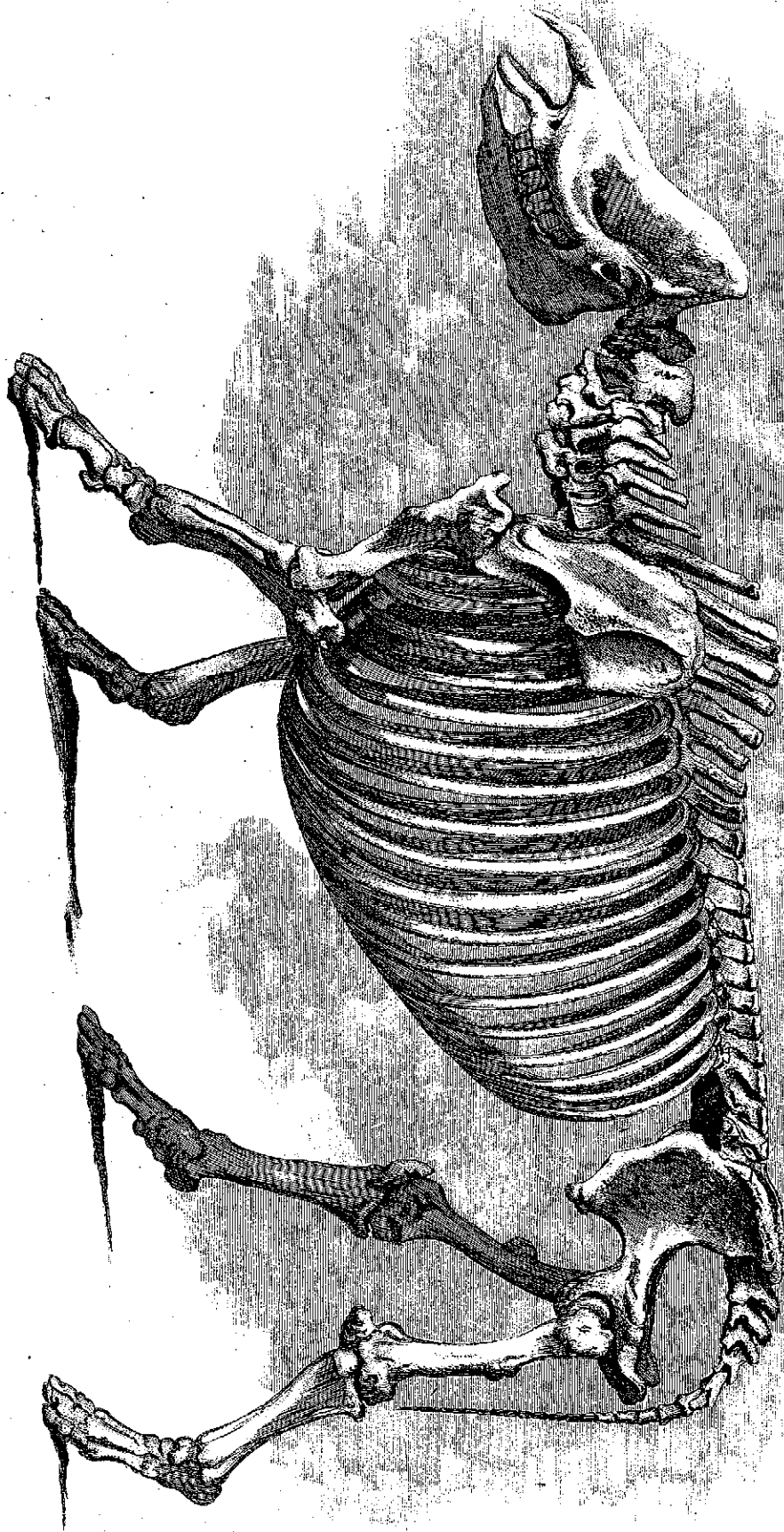
PRINTED FOR LONGMAN, HURST, REES, ORME, AND BROWN,  
PATERNOSTER-ROW.

1823.



The skeleton of the double-horned rhinoceros, from Sumatra ; in which the termination of the nasal bones is more prominent than in the species met with in India. On the scale of one inch to a foot.

TAB. LVII.



*R. Hills Esq. del.*

*J. B. Savin sc.*

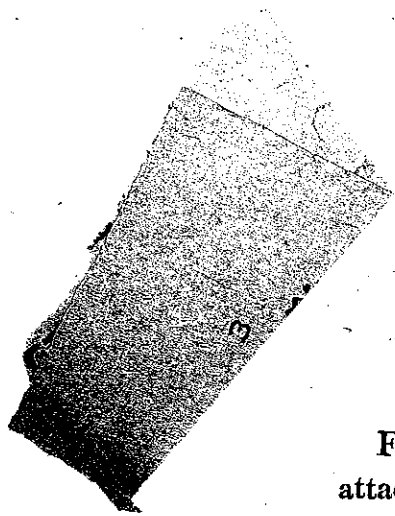


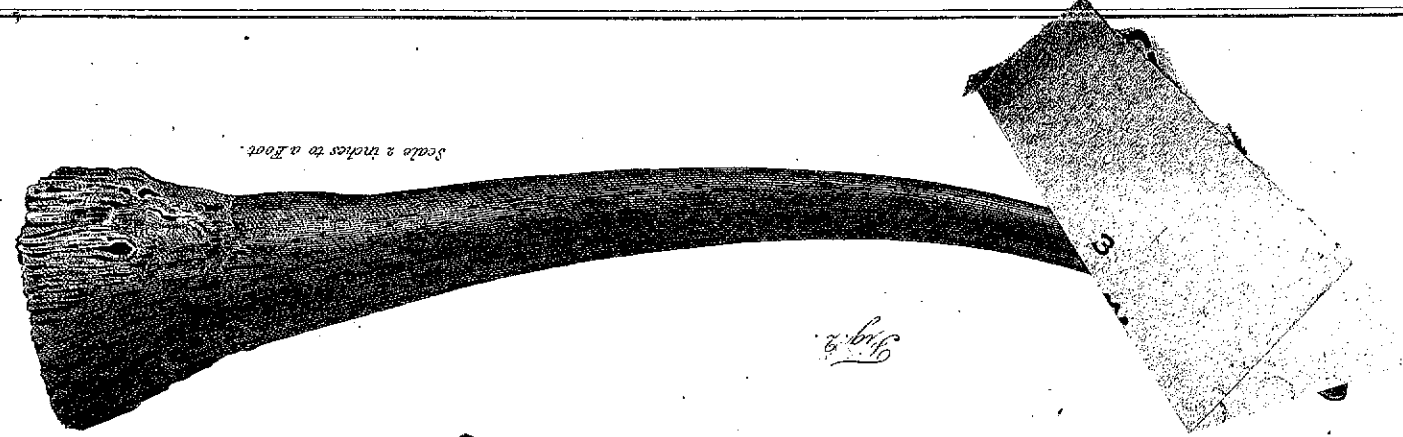
Fig. 1. Represents the horns of a new species of rhinoceros attached to the skull. Upon the scale of one inch and a half to a foot.

Fig. 2. A rhinoceros' horn preserved in the British Museum. Upon a scale of two inches to one foot.

Fig. 3. The horns of the double-horned rhinoceros of Africa, in situ; taken from the engraving in the sixth volume of the Supplement to Buffon, to show that it is a different species from that now brought to England by Mr. Campbell.

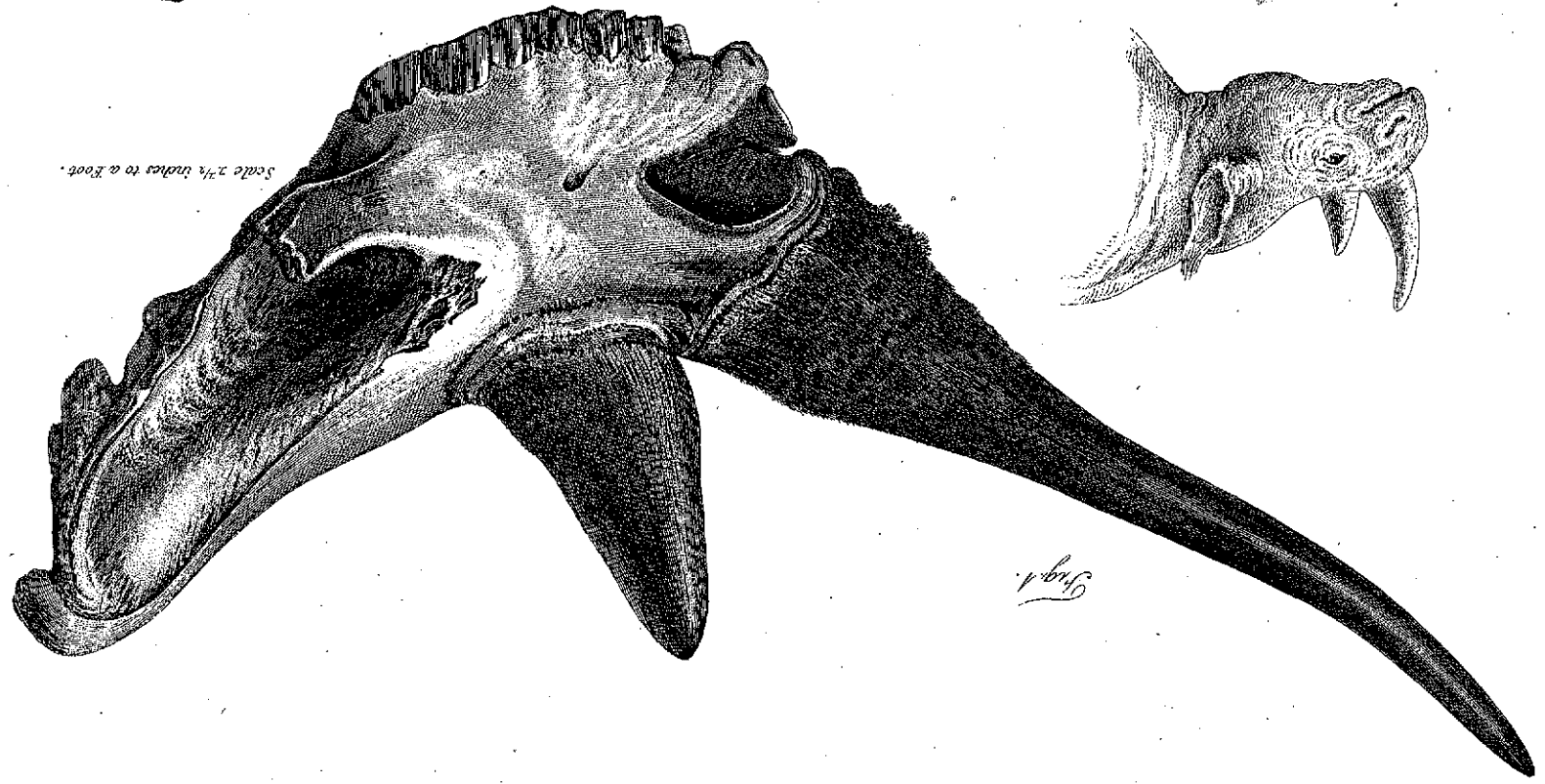
*Fig. 2.*

*Scale 2 inches to a Foot.*



*Fig. 2.*

*Scale 2 1/2 inches to a Foot.*



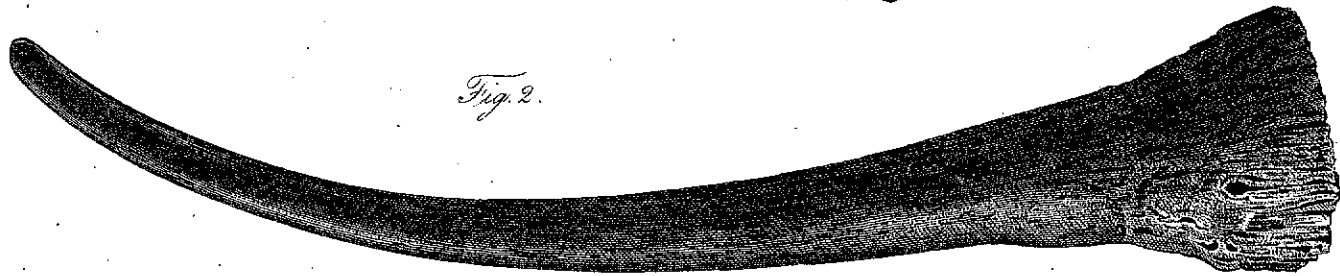
*Fig. 1.*

*Fig. 1.*



*Fig. 1.*

*Scale 2 1/2 inches to a Foot.*



*Fig. 2.*

*Scale 2 inches to a Foot.*

*A. Bourne sculp.*

*W. B. Light sculp.*

The representation of a cast of the fossil-cranium of a rhinoceros (the original is in the Collection in Paris), to show that the two scabrous surfaces upon which the horns have been placed correspond with those to which the horns of Mr. Campbell's skull are attached, giving them the same position and direction, and the upper surface of the cranium the same general outline, so as to entitle the skulls to be considered as of the same species.



Scale 3 inches to a Foot.

W. 36. Giff del.

J. Baine sc.