



**RHINO PROTECTION UNIT (RPU) ACTIVITIES & PERFORMANCE REPORT**  
**BUKIT BARISAN SELATAN - NP, WAY KAMBAS - NP & UJUNG KULON - NP**  
1<sup>ST</sup> QUARTER REPORT  
1 JANUARY - 31 MARCH 2012

REPORTED BY:  
M. WALADI ISNAN & M. SYAMSUDIN

COMPILED BY:  
YANKY AGUNG WAHYUDI

REVIEWED BY:  
WIDODO S. RAMONO

**RHINO PROTECTION UNIT (RPU)**



**PROJECT TITLE:**

**PROTECTION PROGRAM OF YAYASAN BADAQ INDONESIA**

**Reporting Period:** 1 January - 31 March 2011

**Name and Address of Grantee:**

1. International Rhino Foundation (IRF)  
Executive Director, International Rhino Foundation  
138 Strasburg Reservoir Road  
Strasburg, VA 22657  
Tel/fax: 540-465-9595  
Email: [s.ellis@rhinos-irf.org](mailto:s.ellis@rhinos-irf.org)
2. World Wide Fund Indonesia  
Graha Simatupang Building  
Tower 2 Unit C 7th Floor  
Jl. Letjen TB. Simatupang Kav. 38, Jakarta Selatan

**Authorship:**

Reporting provided by Protection Manager (Mr. M. Waladi Isnan). Material and information gathered from field report and associated document.

**Executive Summary:**

The decline of Sumatran and Javan rhino has been in process for a long time. The Javan rhino for example was eliminated from Malaysia in the 1930's. Meanwhile, following the Sumatran rhino PHVA (1993) indicated that the decline of Sumatran rhino probably 50% during the last decade. The total population of Sumatran rhino in Indonesia is estimated only 215 – 319 and will be extinct for the next decade if there are no appropriate and serious management. (Strategy and Action Plan for the Conservation of Rhinos in Indonesia 2007 – 2017). Rhino decline in South East Asia is due to a combination of reduction in habitat and over exploitation of rhino (most recently by poachers after the horn). At this time, poaching pressure continues to be high in Indonesia, hence there is a strong need of this country to emphasize anti-poaching activities. To this the rhino protection program of Yayasan Badak Indonesia (YABI) is activated to answer the need. Rhinoceros is subject to poaching pressure both from hunters and form trappers, they use wire snares and other traps that maims to kill animals. The method employed in poaching prevention are primarily in forms of field patrols to search for traps and other signs of poaching attempt, to destroy these traps, and to collect evidence to identify and apprehend the suspects involved. While in support to field patrol intelligence activities is operated to assist in the apprehension of poachers and identify the routes of illegal trade of protected animal parts (horn, skin, hooves etc.).

The Indonesian Rhino Protection Program of YABI integrates partners of governmental and non-governmental namely Directorate General of Forest Protection and Nature Conservation of the Ministry of Forestry, International Rhino Foundation and World Wide Fund for Nature as well as local villager . The program entails series of approach that includes wild population protection by intensive patrolling of areas to detect traps and arrest intruders, more intensive and extensive surveys, monitoring of the rhino population, and intelligence operations to assist in the apprehension of poachers and identify of routes used for the horn trade and establishment of rhino database system using the Geographic Information System (GIS) techniques.

The Indonesian Rhino Conservation Program (that was originated from GEF Project and that is now has merged into YABI) and this Rhino Protection Program of YABI fully understood that the program is very costly. But, it is important to bring an understanding that the operation of Rhino Protection Units (RPUs) backed-up by Intelligence and Law Enforcement Unit (ILEU) is the most effective measure in protection of rhinos in the wild. Therefore it is important to have developed a simultaneously funding plan for sustainability of rhino conservation program.

The Indonesian Rhino Conservation Program (that was originated from GEF Project and that since 2008 has merged into YABI) and this Rhino Protection Program of YABI fully understood that the program is very costly. But, it is important to bring an understanding the operation of Rhino Protection Units (RPUs) backed-up by Intelligence and Law Enforcement Unit (ILEU) is the most effective measure in protection of rhinos in the wild. Therefore it is important to develop a simultaneously funding plan for sustainability of rhino conservation program.

### **Introduction:**

The decline of both species of rhinoceros, Sumatran and Javan, has been in process for a long time. The population of Sumatran rhino has been reduced to 50% in the last decade and will be extinct for the next decade if there are no serious and appropriate management of rhino. Its decline in range and number in Sumatra is attributed chiefly to fragmentation of its habitat through indiscriminate forest clearance and to poaching, stimulated by the illegal trade in horns, skin and hooves, and other parts of rhino's body.

A Population and Habitat Analysis (PHVA) that was conducted in November 1993 in conjunction with the IUCN SSC and its Conservation Breeding Specialist Group (CBSG) and the AsRSG revealed a significant decline in the numbers of Sumatran rhino in Indonesia. The estimates that emerged from the new data and more rigorous assessment was around 200 (215 – 319). Meanwhile, the previous estimate had been 420 – 875. The GEF project RPU YABI estimated that until June 1998 the presence the population of Sumatran rhino in Kerinci Seblat National Park was 27 – 32, Bukit Barisan Selatan National Park was 40. - 50, and Way Kambas National Park was 24 – 30.

Although the Javan rhino population in Ujung Kulon National Park seems to be holding at about 50 –60, yet the threat of poaching still remains. The loss of rhino has become a matter

of global concern. In 1994, at least one rhino was poached in Ujung Kulon and a suspect has been identified but no prosecution has in progress at that time. Between the months of May and June 2010, there were 3 carcasses of Javan rhino had been evacuated from the field without any evidence of poaching. Also, during this quarter, another 1 carcass of young rhino had been evacuated without any evidence of poaching too. Although rhino poaching evidence and attempt was not found during this quarter, poaching of other wildlife such as small mammals, birds, fish are still occurring.

Saving the remaining rhino population needs further alternatives. There should be series of efforts to protect the remaining population by activating rhino patrol and strengthening its anti-poaching activities, until poacher activity and habitat destruction is reduced to the point of elimination. The other one which has just been implementing "**The Strategy and Action Plan for Conservation of Indonesian Rhinos 2007 - 2017**" by way of developing the Javan Rhino Study and Conservation Area (JaRhiSCA) in Ujung Kulon National Park, Banten, since last October 2010.

In this Quarter, assisted by Aaranyak Foundation, YABI has been continuing to undertake a rhino genetic survey by using DNA analysis from collected dung sample for both Sumatran rhino (in BBS) and Javan rhino (in UK). Under a permit that is granted to YABI collaboration with Eijkman Foundation, fecal genetic samples collected in BBS NP and UK NP were identified in Eijkman Institute.

The Protection Program of YABI has been providing protection from poaching and habitat disturbance for viable nucleus populations of Sumatran and Javan Rhinos through the establishment and operation of Rhino Protection Units, supporting management, coordination, and supervisory structures. Formerly, YABI had been operated 17 Rhino Protection Units (RPU) until middle of 2009, while due to shortage of funding in this quarter, only 16 RPU continued their operation in and surrounding areas of National Parks: Bukit Barisan Selatan (7 RPU), Way Kambas (5 RPU) and Ujung Kulon (4 RPU).

### **Objectives:**

The objective of the Program is to contribute to the long-term viable conservation and management of the Indonesian rhinos (Javan rhino – *Rhinoceros sondaicus*, and the Sumatran rhino – *Dicerorhinus sumatrensis*) and their habitats in Java and Sumatra.

The Indonesian Rhino Protection Program of YABI itself addressed to enhance the capabilities of the Directorate General of Protection and Nature Conservation and associated wildlife agencies to arrest and reverse the decline of rhinoceros due to poacher activity and habitat disturbance toward the national and global goal of recovery of viable populations of rhino species in Indonesia.



### Output:

1. Establishment and operate of at least 17 Rhino Protection Units (RPUs) in Sumatra and Java.
2. Establishment and operate Intelligence and Law Enforcement Unit to support law enforcement process which is undertaken by RPU and Park authority or proceed to identify information of threats from ILEU's informants for further judicial process.
3. Community facilitation for better livelihood and to reduce threats from surrounding community.

### Changes: -

Ir. Agus Priambudi MSc, The Head of Ujung Kulon National Park, has moved to his new duty as The Head of Gn. Halimun Salak National Park (West Java), substituted by DR. Ir. Moch. Haryono, MS. as the new Head of Ujung Kulon National Park, also as Regional Consultant of Rhino Protection Program of YABI.

### Progress:

The Rhino Protection Program of YABI provide protection from poaching and habitat disturbance for viable nucleus populations of Sumatran and Javan Rhinos through the establishment and operation of Rhino Protection Units (RPUs), and supporting management, coordination and supervisory structures. The outcome of operations of 7 RPUs in Bukit Barisan Selatan National Park (BBS NP), 5 RPUs in Way Kambas National Park (WK NP) and 4 RPUs in Ujung Kulon National Park (UK NP) is reported as seen in Annex 1. (*RPUs Activities Report Periode January - March 2012.*), as per attached.

During the implementation of this activities such as surveys and patrols the RPU/RMPU achieved numbers of surveys, distance of walked, and duration of time they consumed in every each of their activities. The Team also had found various cases of illegal activities / offenses in the National Parks, into which prosecution had been made through filing the



Picture - 1:  
Footprint of a rhino calf in bukit Barisan Selatan - NP.

cases and hand over the cases to local Police Stations.

In BBS, the RPU detected 6 snares for big mammals and inactivated them. When they were patrolling Way Mahmay area, the detected footprints of a female and a calf rhino ( February 2012).

RPU Way Kambas succeeded to take picture and videofilming when they was directly sighting a female and a young rhino, in February 2012.



Picture - 2:  
Young rhino, taken by RPU Way Kambas - NP on February.

When patrolling JRSCA area, the RPU detected the evidence that 2 rhinos have been residing in this area since last year (2010), whilst another 2 rhinos visited the area for couple of months and then back to the UK peninsula.

The achievements of the Protection Program for this period of *January – March 2012* is described below in *Annex 1*.

Records on illegal killings of animal and other forest offenses detected by both RPU (BBS, WK and UK) and ILEU is shown in *Annex 2*. Then the map which showing patrol route, the rhino foot-print distribution encountered and location of illegal activity are shown in *Annex-3*.

The field days per month of the RPU personnel's activities is shown in *Annex-1*.

Intelligence and Law Enforcement Unit (ILEU) has been operating to identify the threats which come from surrounding people or outside of the Park; its operations also covers identifying possible facilitations for raising local's alternative income in order to reduce threats to the park and its rhinos. There are only 3 personnels in this unit that have to work in collaboration with informants, RPU, Park Rangers and Police. In the case that they have a confirmed case and have to apprehend / arrest the suspect/s for further law enforcement efforts (judicial process) they have to coordinate with the RPU and the Police. ILEU's base is in BBS and surroundings, they also available to assist ILEU operation in both WK and UK NPs.

ILEU's findings of their activities, together with RPU BBS findings, is shown in *Annex-2*,

### **Conclusions and Recommendation:**

In this period, the average number of field days per month for every personnel of RPU were under the Program required of 20 days per month, showed as follow :

- ❖ RPU BBS achieved 18.91 from their 46 patrol / survey (out of total 62 activities).
- ❖ RPU WK achieved 15.00 from their 46 patrol / survey (out of 60 total activities).
- ❖ RPU UK achieved 15.33 from their 30 patrol / survey (out of 36 total activities).

The other activities of RPU BBS and WK, they were involved in collaborative operations of the Park to free the Park area from encroachments, specially in BBS, as well as elephant drive back into the Park.

In BBS, the RPU had arrested 3 suspects of illegal logging, also detected and inactivated 6 snares which mostly for small mammals.

In WK, the RPU arrested 5 suspects of illegal logging and 1 of bird trapping. They detected and inactivated 6 snares for deer and wildboar.

In UK, there was no illegal activities detected by the RPU in JRSCA area, and detected evidence that 2 rhinos from Peninsula visited the area for a couple weeks.

The Program had found many rhino footprints in this period but it can not be utilized to determine the number of rhino population. It still need to be analyzed with the sophisticated method

### **Highlight of this quarter report:**

- ❖ Tracks of one rhino calf found in Bukit Barisan Selatan - NP.
- ❖ RPU were able to photograph a female Sumatran rhino with her young in Way Kambas - NP.
- ❖ Two Javan rhinos became residence of JRSCA while 2 other rhinos visited the area.
- ❖ RPU assisted the Parks to free some areas of the Parks from encroachments.
- ❖ A few numbers of new traps were found and dismantled.
- ❖ Eight illegal logging were detected and send to judiciary process.
- ❖ No rhino poaching evidence were found but there were some other small animal poaching evidence.

# **YAYASAN BADAQ INDONESIA - YABI** **Rhino Foundation of Indonesia - RFI**



## **ANNEX-1:**

### **QUARTERLY ACTIVITY AND PERFORMANCE REPORT**

**1 JANUARY - 31 MARCH 2011  
(Q1)**



# RPU

## BUKIT BARISAN SELATAN

### NATIONAL PARK

#### Highlights

1. Detected footprint of female and calf rhino, Way Mahnay (Feb. 2012).
2. Detected footprint of a calf rhino and a wallow.
3. Inactivated 6 snares for big mammals.
4. Detected signs of tigers (female and juvenile), in Simpang Kelawar (Feb.2012).
5. Arrested 3 suspects of bird trapping, IN Pematang Bamban (17 March 2012).

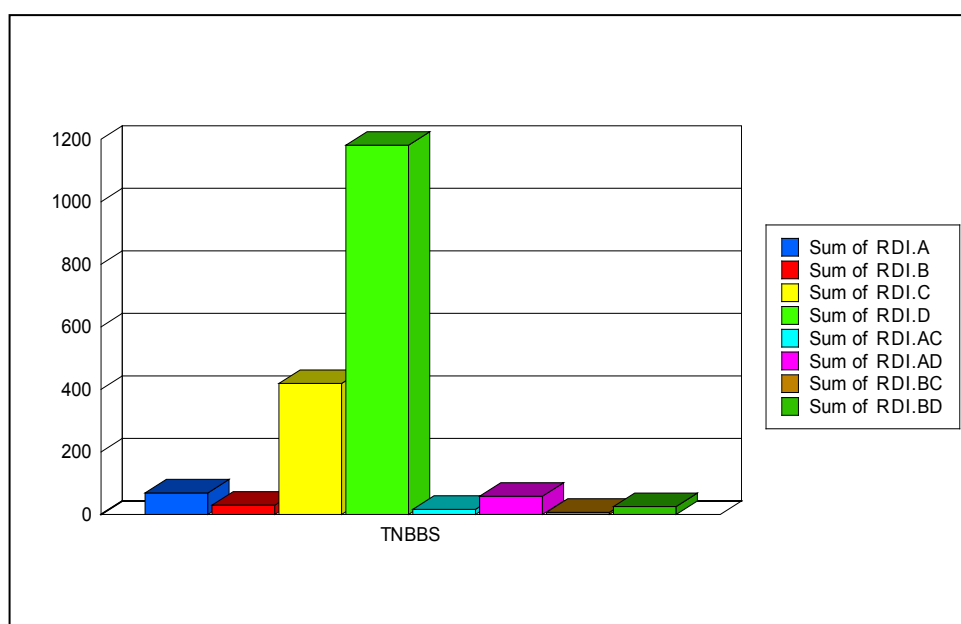
## BASIC POPULATION PARAMETERS

Number of Footprints	Number of Locations with rhino signs					
	Footprints	Wallows	Feces	Feeding	Other Signs*	Direct Sighting
66	69	22	5	2	1	0

\* Include Urine, Scratches, Rubbings, etc.

During the 46 /surveys in this period, 99 independent signs of rhino were encountered and no direct sighting

## RHINO DENSITY INDICATORS



Rhino		RPU Field Presence		Density Indicators			
A	B*	C	D	A/C	A/D	B/C	B/D
Number of print locations	Number of Rhino Signs*	Field Days**	Distance Walked***	Rhino prints/ 100 days	Rhino prints/ 1000 km	Rhino signs/ 100 days	Rhino signs/ 1000 km
<b>69</b>	<b>30</b>	<b>419</b>	<b>1.181,00</b>	<b>16,47</b>	<b>58,43</b>	<b>7,16</b>	<b>25,40</b>

(B\*) The total number of sign (excluding footprints) of rhino found. \*\* Total number of RPU group field days during surveys only (excluding other activities). \*\*\* Total number of range in kilometer covered by RPU group during surveys activity.

## ILLEGAL ACTIVITIES ENCOUNTERED

Gaharu * Theft	Encroachment	Timber Theft	Forest Product Theft	Illegal Hunting		
				Rhino / Trap	Non Rhino (Mammals)	Other
0	5	1	0	0	1	8

\* Gaharu ( a component for incense) theft is listed separately, because it is a major threat in any forest in Indonesia

In BBS, during the surveys and patrols a total of 15 cases of illegal activities were encountered. The major case encountered were encroachments (old encroachments), then followed by non mammals hunting . **No trap of rhino** encountered.

Record of cases as per what attached in **Annex – 2**, which included: date of incidence, date of detection, type of offences, place of occurrence, evidence (forest/wildlife produces recovered, Arms /other evidence, suspects, legal status and comments.

### ENCOUNTERED ANIMALS

Patrol Areas	Rhino	Elephant	Tiger	Tapir	Other	Offences
PN Tanggamus						
SP2, Ngambur pangkalan bundik, Hulu way telemak, dsk	✓	✓		✓		
Way pemerihan, Way canguk, dsk		✓	✓			
Siring huong, Hulu way ngambur, Hulu way marang, Hulu way biha, Kalibata, Suoh dsk	✓	✓				✓
KM 50, Hulu way bamban, KM 30, dsk		✓		✓	✓	✓
Kubu perahu, Hulu way menterang, Hulu way krui, Hulu way tengkuluk dsk	✓	✓	✓	✓		
Tugu ratu, Way tembulih, Hulu way rilau, Way mendati dsk	✓	✓		✓		✓
Way asahan, Talang simpang, Otok radang dsk		✓	✓	✓	✓	✓
Atar lintik, Pematang balak, Way						

tenong, Kekup Kec.lemong Kab.lam-bar						
Way asahan, hulu way lancuran, Way samang, Way nenok, Sugiwaras, Penengahan dsk		✓	✓	✓		
Bandar Lampung						
Bumi perkemahan sukaraja atas						
Mahnay lunik, Way mahnay tengah, Way tenumbang, Way mahnay balak dsk	✓	✓	✓	✓		
Pos dal RPU BBS						
Panji wayang, Way ngambur bundik, Way telemak dsk		✓				✓
Hulu way pemerihan, Km 24 s/d 28, Resort pemerihan dsk						
Tlg.Lima, Hulu way lubuk pring, Hulu way basohan, Hulu way biha, Kubu gedung dsk	✓	✓	✓	✓		
KM 30 s/d KM 24 dsk						
Bumbon, Hulu way lubuk pring, Way lubuk pring, Way tenumbang, Damar pak dsk Pematang langgar, Grogol dsk	✓ ✓	✓ ✓	✓	✓ ✓		✓
Sebarus, Kubu perahu, Landos dsk	✓	✓		✓		
Bumi jaya, Hantatai, Bt.penetoh, Bt.peninggawan, Hulu way lubuk pring, Hulu way biha dsk	✓	✓	✓	✓		✓
Mendati, Hulu way mendati, Siring bogang, Siring udang, Hulu way rilau, Krengseng dsk		✓	✓	✓		✓
Pos dal RPU BBS						
Jalan tembus Pal 50 - KM 18, pemerihan, talang metro, siring damar, SP3 mendati dsk						
Simpang kelawi dsk						

Talang kalianda, Ragam mufakat, Atar mayam, Talang tengah, Talang cemara, Merpas dsk						
Pos dal RPU BBS						
Pal 50, Pemerihan, Muara pemerihan dsk						
Pos dal RPU BBS						
Pos dal RPU BBS						
Pos dal RPU BBS						
Kubu perahu dsk						
Pos dal RPU BBS						
Pos dal RPU BBS						
Kubu Perahu, Tebah lior, Sebarus dsk						
Pemerihan dsk nya						
Panjiwayang, Way ngambur bundik dsknya		✓	✓	✓		✓
Panjiwayang, Way ngambur bundik dsknya		✓	✓	✓		
KM 24-26, Tlg baru bengkurat, Sangsado dsk nya						
Tenumbang, Tlg.kebudu dsk						
Pal 50, KM 30, Bamban dsknya		✓	✓	✓		
Way nipah, Pedamaran, Peninggaman, Way haru dsknya						
Soumil kec.semaka kab.tanggamus						
Pintau, Way bangkok, KM 13 dsknya						
Km 24, Hulu way bamban, Hulu way pemerihan, Way pemerihan dsk		✓	✓	✓		
Sukaraja atas, P 50, Pemerihan, Tl.bangkok, Ujung pandang, Tl.11, Tl.sidomulyo, Panjiwayang dsk						
Sukaraja atas dsk						
Peninggaman, Penyantun, Kota jawa-bengkunat, Pedamaran, Karang anyar, karang berak dsk						
Negri ratu, Tlg. batre, Simpang cikuya, Blok 7 ngaras, Hulu way ngaras, Campang kanan, Simpang balong, Tlg.11 dsk Pekon kota batu, Kec.kotaagung barat		✓		✓		✓



Sukaraja atas, Tlg.jhoni, Hulu way bamban, Way pemerihan dsk						
Tlg.Pagelaran, Tlg.Sarmain, Way pintau, Tlg.Timunan, Way bamban, Tlg.6, P 50 dsk	✓	✓	✓	✓		
Kali pete, Hulu way ngaras dsk		✓	✓	✓		
Krui, Kubu perahu, Bumbon, Suoh dsknya						
Pemerihan, Way haru, Blok 7 ngaras dsk nya						
Tlg. 5, Tlg.teg ah, Kali pasir dsk						
Kotaagung, Sukaraja atas, Bengkumat dsk						
Pos dal RPU BBS						
Pos dal RPU BBS						
Pal 50, Kuyung arang, Hulu way bamban, Kepimping, Km13 dsk		✓		✓		
Way haru dsknya						

#### DETAILS OF RHINO SIGN

Location	Footprint	Direct sighting	Wallow	Feeding	Faeces	Others
SP2, Ngambur pangkalan bundik, Hulu way telemak, dsk	16	0	0	0	0	0
Way pemerihan, Way canguk, dsk	0	0	0	0	0	0
Siring huong, Hulu way ngambur, Hulu way marang, Hulu way biha, Kalibata, Suoh dsk	1	0	6	0	2	0
KM 50, Hulu way bamban, KM 30, dsk	0	0	0	0	0	0
Kubu perahu, Hulu way menterang, Hulu way krui, Hulu way tengkuluk dsk	15	0	0	0	0	0
Tugu ratu, Way tembulih, Hulu way rilau, Way mendati dsk	9	0	2	0	0	0
Way asahan, Talang simpang, Otok radang dsk	0	0	0	0	0	0

Atar lintik, Pematang balak, Way tenong, Kekup Kec.lamong Kab.lam-bar	0	0	0	0	0	0
Way asahan, hulu way lancuran, Way samang, Way nenok, Sugiwaras, Penengahan dsk	0	0	0	0	0	0
Mahnay lunik, Way mahnay tengah, Way tenumbang, Way mahnay balak dsk	9	0	3	1	0	1
Panji wayang, Way ngambur bundik, Way telemak dsk	0	0	0	0	0	0
Hulu way pemerihan, Km 24 s/d 28, Resort pemerihan dsk	0	0	0	0	0	0
Tlg.Lima, Hulu way lubuk pring, Hulu way basohan, Hulu way biha, Kubu gedung dsk	0	0	0	0	1	0
KM 30 s/d KM 24 dsk	0	0	0	0	0	0
Bumbon, Hulu way lubuk pring, Way lubuk pring, Way tenumbang, Damar pak dsk	1	0	2	0	0	0
Pematang langgar, Grogol dsk	6	0	2	0	0	0
Sebarus, Kubu perahu, Landos dsk	4	0	3	1	1	0
Bumi jaya, Hantatai, Bt.penetoh, Bt.peninggawan, Hulu way lubuk pring, Hulu way biha dsk	5	0	3	0	1	0
Mendati, Hulu way mendati, Siring bogang, Siring udang, Hulu way rilau, Krengseng dsk	0	0	0	0	0	0
Jalan tembus Pal 50 - KM 18, pemerihan, talang metro, siring damar, SP3 mendati dsk	0	0	0	0	0	0
Simpang kelawi dsk	0	0	0	0	0	0
Talang kalianda, Ragam mufakat, Atar mayam, Talang tengah, Talang cemara, Merpas dsk	0	0	0	0	0	0

Pal 50, Pemerihan, Muara pemerihan dsk	0	0	0	0	0	0
Kubu Perahu, Tebah lior, Sebarus dsk	0	0	0	0	0	0
Pemerihan dsk nya	0	0	0	0	0	0
Panjiwayang, Way ngambur bundik dsknya	1	0	0	0	0	0
Panjiwayang, Way ngambur bundik dsknya	2	0	0	0	0	0
KM 24-26, Tlg baru bengkurat, Sangsado dsk nya	0	0	0	0	0	0
Tenumbang, Tlg.kebudu dsk	0	0	0	0	0	0
Pal 50, KM 30, Bamban dsknya	0	0	0	0	0	0
Way nipah, Pedamaran, Peninggaman, Way haru dsknya	0	0	0	0	0	0
Pintau, Way bangkok, KM 13 dsknya	0	0	0	0	0	0
Km 24, Hulu way bamban, Hulu way pemerihan, Way pemerihan dsk	0	0	0	0	0	0
Sukaraja atas, P 50, Pemerihan, Tl.bangkok, Ujung pandang, Tl.11, Tl.sidomulyo, Panjiwayang dsk	0	0	0	0	0	0
Sukaraja atas dsk	0	0	0	0	0	0
Peninggaman, Penyantun, Kota jawa-bengkurat, Pedamaran, Karang anyar, karang berak dsk	0	0	0	0	0	0
Nagri ratu, Tlg. batre, Simpang cikuya, Blok 7 ngaras, Hulu way ngaras, Campang kanan, Simpang balong, Tlg.11 dsk	0	0	0	0	0	0
Sukaraja atas, Tlg.jhoni, Hulu way bamban, Way pemerihan dsk	0	0	0	0	0	0
Tlg.Pagelaran, Tlg.Sarmain, Way pintau, Tlg.Timunan, Way bamban, Tlg.6, P 50 dsk	0	0	1	0	0	0

Kali pete, Hulu way ngaras dsk	0	0	0	0	0	0
Krui, Kubu perahu, Bumbon, Suoh dsknya	0	0	0	0	0	0
Pemerihan, Way haru, Blok 7 ngaras dsk nya	0	0	0	0	0	0
Tlg. 5, Tlg.tegah, Kali pasir dsk	0	0	0	0	0	0
Kotaagung, Sukaraja atas, Bengkuntat dsk	0	0	0	0	0	0
Pal 50, Kuyung arang, Hulu way bamban, Kepimping, Km13 dsk	0	0	0	0	0	0
Way haru dsknya	0	0	0	0	0	0

#### PATROL DATA

Location	Activities	Start Date	End Date	Days	No. of Person	Length (Km)	Remarks
PN Tanggamus	Law Enforcement	02 - Jan	04 - Jan	3	1	0,00	Judicial Court for a suspect.
SP2, Ngambur pangkalan bundik, Hulu way telemak, dsk	Patrol / Survey	07 - Jan	18 - Jan	12	2	78	No signs of rhino. No illegal activities. Collected 1 sample of rhino fecal/dung.
Way pemerihan, Way canguk, dsk	Patrol / Survey	07 - Jan	18 - Jan	12	4	18,5	Detected signs of elephant and tiger. No new signs of rhino.
Siring huong, Hulu way ngambur, Hulu way marang, Hulu way biha, Kalibata, Suoh dsk	Patrol / Survey	07 - Jan	19 - Jan	13	2	79,96	Detected old signs of rhino (footprint; food; faeces). Detected ilegal activities (bird trapping and fishing).
KM 50, Hulu way bamban, KM 30, dsk	Patrol / Survey	09 - Jan	18 - Jan	10	4	15,8	No rhino signs. Signs of elephant tapir and deer. Detected old signs of bird trapping.
Kubu perahu, Hulu way menterang, Hulu way krui, Hulu way tengkuluk dsk	Patrol / Survey	09 - Jan	19 - Jan	11	2	0,00	Detected new rhino footprint.
Tugu ratu, Way tembulih, Hulu way rilau, Way mendati dsk	Patrol / Survey	09 - Jan	19 - Jan	11	3	36,2	Detected signs of rhino (footprints; wallow). Inactivated 1 snare. Direct sighting of 1 elephant.
Way asahan, Talang simpang, Otok radang dsk	Patrol / Survey	10 - Jan	21 - Jan	12	2	32	No new rhino sign. Detected bird trapping and old sign of elephant poaching.

							Monitored encroached area of 1 month after driven.
Atar lintik, Pematang balak, Way tenong, Kekup Kec.lamong Kab.lam-bar	Patrol / Survey	10 - Jan	15 - Jan	6	1	0,00	No illegal activities in ex-encroachment area.
Way asahan, hulu way lancuran, Way samang, Way nenok, Sugiwaras, Penengahan dsk	Patrol / Survey	10 - Jan	20 - Jan	11	2	46,5	No rhino signs. Detected signs of elephant, tiger and tapir.
Bandar Lampung	Meeting and consultation	20 - Jan	22 - Jan	3	2	0,00	Attended by BBSNP and NGOs
Bumi perkemahan sukaraja atas	Awareness	22 - Jan	23 - Jan	2	1	0,00	For local boyscout.
Mahnay lunik, Way mahnay tengah, Way tenumbang, Way mahnay balak dsk	Patrol / Survey	22 - Jan	06 - Feb	14	2	44	Detected footprint of female and calf rhino. Detected footprint of tiger, elephant, tapir. Encountered bird trapping, release 2 birds.
Pos dal RPU BBS	Meeting	24 - Jan	26 - Jan	3	12	0,00	Developed Plan of year 2012.
Panji wayang, Way ngambur bundik, Way telemak dsk	Patrol / Survey	24 - Jan	04 - Feb	12	2	24,2	Detected footprints and dung of elephant. No illegal activity.
Hulu way pemerihan, Km 24 s/d 28, Resort pemerihan dsk	Patrol / Survey	24 - Jan	01 - Feb	9	3	81	No illegal activity. No rhino signs.
Tlg.Lima, Hulu way lubuk pring, Hulu way basohan, Hulu way biha, Kubu gedung dsk	Patrol / Survey	27 - Jan	06 - Feb	11	3	45	Collected fecal / dung sample of rhino. Detected footprint and dung of tiger, elephant and tapir.. Encountered 4 trespassers (fishing).
KM 30 s/d KM 24 dsk	Patrol / Survey	28 - Jan	03 - Feb	7	10	2	No illegal activity.
Bumbon, Hulu way lubuk pring, Way lubuk pring, Way tenumbang, Damar pak dsk	Patrol / Survey	27 - Jan	06 - Feb	11	2	67,61	Detected old footprint of rhino.
Pematang langgar, Grogol dsk	Patrol / Survey	07 - Jan	20 - Jan	14	2	82,04	Detected signs of tiger, elephant, tapir. Detected footprint of a calf rhino and a wallow.
Sebarus, Kubu perahu, Landos dsk	Patrol / Survey	24 - Jan	07 - Feb	15	3	65,98	Detected signs of rhino (footprints, tilted stem, wallow, faeces). Detected footprints of elephant, tiger and sunbear.



Bumi jaya, Hantatai, Bt.penetoh, Bt.peninggawan, Hulu way lubuk pring, Hulu way biha dsk	Patrol / Survey	24 - Jan	06 - Feb	15	3	28,3	Detected signs of rhino (footprints, wallow, faeces). Collected faecal sample.
Mendati, Hulu way mendati, Siring bogang, Siring udang, Hulu way rilau, Krengseng dsk	Patrol / Survey	24 - Jan	04 - Feb	12	3	38	Detected signs of trespassers.
Pos dal RPU BBS	Meeting	06 - Feb	16 - Feb	11	3	0,00	Well done
Jalan tembus Pal 50 - KM 18, pemerihan, talang metro, siring damar, SP3 mendati dsk	Patrol / Survey	07 - Feb	12 - Feb	6	4	82	No illegal activities.
Simpang kelawi dsk	Patrol / Survey	07 - Feb	10 - Feb	4	3	13	Checked an information on a tiger which killed a goat and a dog.
Talang kalianda, Ragam mufakat, Atar mayam, Talang tengah, Talang cemara, Merpas dsk	Patrol / Survey	08 - Feb	19 - Feb	12	4	0,00	No illegal activities. No new encroachment. Detected coffee plantation.
Pos dal RPU BBS	Meeting	09 - Feb	13 - Feb	5	4	0,00	Designated grids of surveys.
Pal 50, Pemerihan, Muara pemerihan dsk	Patrol / Survey	09 - Feb	18 - Feb	10	4	0,00	No illegal activities.
Pos dal RPU BBS	Meeting	11 - Feb	13 - Feb	3	3	0,00	Developed survey map
Pos dal RPU BBS	Meeting	13 - Feb	13 - Feb	1	4	0,00	Designated survey plan
Pos dal RPU BBS	Meeting	13 - Feb	13 - Feb	1	3	0,00	Designated survey plan
Kubu perahu dsk	Training	13 - Feb	19 - Feb	7	2	0,00	Provide training for other NGOs
Pos dal RPU BBS	Meeting	14 - Feb	18 - Feb	5	3	0,00	Developed 21 grids to be surveyed.
Kubu Perahu, Tebah lior, Sebarus dsk	Patrol / Survey	14 - Feb	19 - Feb	6	4	0,00	No illegal activities.
Pemerihan dsk nya	Patrol / Survey	14 - Feb	17 - Feb	4	3	19	No illegal activities
Panjiwayang, Way ngambur bundik dsknya	Patrol / Survey	20 - Feb	26 - Feb	7	4	12	Detected signs of rhino (footprint, wallow).
Panjiwayang, Way ngambur bundik dsknya	Patrol / Survey	20 - Feb	26 - Feb	7	4	12	Detected signs of rhino
KM 24-26, Tlg baru bengkumat, Sangsado dsk	Patrol / Survey	21 - Feb	26 - Feb	6	4	0,00	No illegal activities.

nya							
Tenumbang, Tlg.kebudu dsk	Patrol / Survey	22 - Feb	27 - Feb	6	4	7	Detected signs of tiger.
Pal 50, KM 30, Bamban dsknya	Patrol / Survey	23 - Feb	29 - Feb	7	4	16,5	Detected signs of tapir, tiger and elephant.
Way nipah, Pedamaran, Peninggaman, Way haru dsknya	Patrol / Survey	25 - Feb	29 - Feb	5	4	0,00	Detected old encroachment.
Soumil kec.semaka kab.tanggamus	Awareness	25 - Feb	26 - Feb	2	1	0,00	For boyscouts
Pintau, Way bangkok, KM 13 dsknya	Patrol / Survey	23 - Feb	29 - Feb	7	3	15	Detected signs of tigers (female and juvenile), feed on goat in village way bangkok .
Km 24, Hulu way bamban, Hulu way pemerihan, Way pemerihan dsk	Patrol / Survey	05 - Mar	14 - Mar	10	5	35,5	No rhino signs. Detected footprints of elephant, tiger and tapir.
Sukaraja atas, P 50, Pemerihan, Tl.bangkok, Ujung pandang, Tl.11, Tl.sidomulyo, Panjiwayang dsk	Patrol / Survey	05 - Mar	11 - Mar	7	4	0,00	Detected new signs of tigers. No illegal activities.
Sukaraja atas dsk	Patrol / Survey	05 - Mar	12 - Mar	8	3	0,00	No illegal activities.
Peninggaman, Penyantun, Kota jawa-bengkunat, Pedamaran, Karang anyar, karang berak dsk	Patrol / Survey	05 - Mar	14 - Mar	10	5	47	No illegal activities.
Nagri ratu, Tlg. batre, Sim-pang cikuya, Blok 7 ngaras, Hulu way ngaras, Campang kanan, Sim -pang balong, Tlg.11 dsk	Patrol / Survey	07 - Mar	18 - Mar		4	45	No new signs of rhino. Arrested 3 suspects of bird trapping.
Pekon kota batu, Kec.kotaagung barat	Meeting	16 - Mar	18 - Mar	3	2	0,00	Well done
Sukaraja atas, Tlg.jhoni, Hulu way bamban, Way pemerihan dsk	Kegiatan lain	20 - Mar	30 - Mar	11	4	0,00	No rhinofootprint. Detected trespassing. No poaching.
Tlg.Pagelaran, Tlg.Sarmain, Way pintau, Tlg.Timunan, Way bamban, Tlg.6, P 50 dsk	Patrol / Survey	21 - Mar	28 - Mar	8	4	23	No signs of rhino. No illegal activities.
Kali pete, Hulu way ngaras dsk	Patrol / Survey	21 - Mar	29 - Mar	9	4	15,1	No illegal activities No rhino signs.
Krui, Kubu perahu, Bumbon, Suoh dsknya	Patrol / Survey	24 - Mar	29 - Mar	6	4	0,00	Got info on tiger conflict, No illegal activities.

Pemerihan, Way haru, Blok 7 ngaras dsk nya	Patrol / Survey	26 - Mar	04 - Apr	8	3	0,00	No illegal activities.
Tlg. 5, Tlg.tegah, Kali pasir dsk	Patrol / Survey	21 - Mar	24 - Mar	4	3	0,00	No illegal activities
Kotaagung, Sukaraja atas, Bengkumat dsk	Patrol / Survey	12 - Mar	18 - Mar	7	3	0,00	No illegal activities
Pos dal RPU BBS	Meeting	05 - Mar	05 - Mar	1	3	0,00	Designated Survey / patrol on March 2012
Pos dal RPU BBS	Meeting	05 - Mar	06 - Mar	2	4	0,00	Prepared patrol organization.
Pal 50, Kuyung arang, Hulu way bamban, Kepimping, Km13 dsk	Patrol / Survey	19 - Mar	28 - Mar	10	4	55	Detected signs of elephant. Direct sighting of a group of elephant. No rhino signs.
Way haru dsknya	Patrol / Survey	28 - Mar	30 - Mar	3	3	0,00	No illegal activities.

### GENERAL PERFORMANCE PARAMETERS

Number of general activities	62
Number of Patrol and Surveys	46
Distance Walked (Kilometers)	1,181.69
Distance Walked for Patrol and Survey	1,181.69
Number of Field Days	476
Number of Field Days for Patrol and Survey	419
Field Days per-person per-month	18.91

A total of 52 activities were conducted during this quarter (January - March) of the year and among of them were 46 activities of patrol/surveys, which covering 1,181.69 Km and field-days 18,21 days per person per month. Out of their patrol activity, they involve in collaborative operation with The Park Administration to move encroachments and wildlife conflict resolution.

## PROGRAM PERSONNEL

(Summary of Field Days Per-Person Per-Month 1 January - 31 March 2012)

Personnel	Days	Average	
		Field days / month	
Agung S	60	20,00	3 (month)
Agus Sulaeman	56	18,67	3 (month)
Bahara	65	21,67	3 (month)
Budiono	58	19,33	3 (month)
Edy Rusmanto	28	14,00	2 (month)
Hendra Wijaya	57	19,00	3 (month)
Heryanto	57	19,00	3 (month)
Jalisi	48	16,00	3 (month)
Madnurzen	67	22,33	3 (month)
Maris Feriyadi	41	13,67	3 (month)
Marsum	58	19,33	3 (month)
Merli Aroc Hulu	60	20,00	3 (month)
Nang Jamadi	47	15,67	3 (month)
Olih	50	16,67	3 (month)
Rahman	76	25,33	3 (month)
Romianto	45	15,00	3 (month)
Samsurizal	57	19,00	3 (month)
Saptono	28	14,00	2 (month)
Sinyo Handoko	70	23,33	3 (month)
Sudari	60	20,00	3 (month)
Suharsono	61	20,33	3 (month)
Syahroni	64	21,33	3 (month)
Teguh Taryono	54	18,00	3 (month)
Timbul TB	60	20,00	3 (month)
Toho	60	20,00	3 (month)
Uga Yogaswara	72	24,00	3 (month)
Zen Afrial	45	15,00	3 (month)

### Other personnels :

1.	Titus Ramadhani	Field Coordinator
2.	Maman	Administrative and Finance staf of RPU BBS
3.	Nasarius S. Waja	Driver-1
4.	Suparmin	Driver-2
5.	Era Herawati	Cook-1
6.	Wawah	Cook-2
7.	Hari Saputra	Office boy-1
8.	Rubianto	Office boy-2

# RPU WAY KAMBAS NATIONAL PARK

## HIGHLIGHTS

1. Direct sighting and video filming a calf and a female rhinos (15 February 2012), when patrolling Camp Siang.
2. Arrested 3 suspects of illegal logging and 1 suspect of bird trapping, and the evidences, in Sungai Bayan.
3. Arrested 2 (of 4) suspects of illegal logging.
1. Inactivated 6 snares (for deer and wildpig), When patrolling Penanggungan. (24-27 Feb2012).



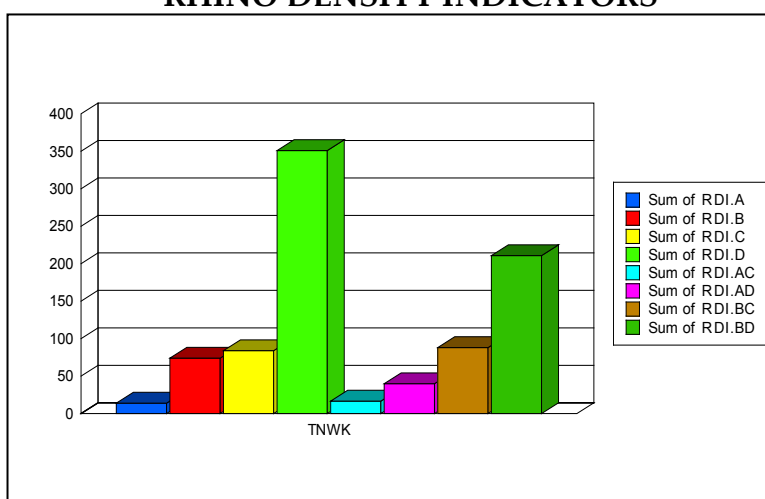
## BASIC POPULATION PARAMETERS

Number of Footprints	Number of Locations with rhino signs					
	Footprints	Wallows	Feces	Feeding	Other Signs*	Direct Sighting
67	10	10	46	12	53	3

\* Include Urine, Scratches, Rubbings, etc.

During the 17 patrols and surveys in this period, 131 independent signs of rhino were encountered and 3 direct sightings.

## RHINO DENSITY INDICATORS



Rhino		RPU Field Presence		Density Indicators			
A	B*	C	D	A/C	A/D	B/C	B/D
Number of print locations	Number of Rhino Signs*	Field Days**	Distance Walked***	Rhino prints/ 100 days	Rhino prints/ 1000 km	Rhino signs/ 100 days	Rhino signs/ 1000 km
14	74	84	351,00	16,67	39,89	88,10	210,83

(B\*) The total number of sign (excluding footprints) of rhino found. \*\* Total number of RPU group field days during surveys only (excluding other activities). \*\*\* Total number of range in kilometer covered by RPU group during surveys activity.

### ILLEGAL ACTIVITIES ENCOUNTERED

Gaharu * Theft	Encroachment	Timber Theft	Forest Product Theft	Illegal Hunting		
				Rhino / Trap	Non Rhino (Mammals)	Other
5	23	9	1	0	3	3

\* Gaharu ( a component for incense) theft is listed separately, because it is a major threat in any forest in Indonesia

In WK, during the surveys and patrols a total of 44 cases of illegal activity were detected. The major case encountered was old encroachment and then poaching of non mammals. **No trap for rhino** encountered.

Record of cases as per attached in **Annex-2**, which including: date of incidence, date of detection, type of offences, and place of occurrence, evidence (forest/wildlife produces recovered, Arms /other evidence), suspect, legal status and comments.

### ENCOUNTERED ANIMALS

Patrol Area	√ = encountered					
	Rhino	Elephant	Tiger	Tapi r	Other Mam- mal	Offences
1	2	3	4	5	6	7
Gambas RI, Kolam Darmaji						
Way Bungur dan sekitarnya						
Way Bungur dan sekitarnya						
Rantau Jaya Udik RPTN Susukan Baru						
Rawa Kerek, Kolam Darmaji dan sekitarnya		√				
RPTN Rawa Bunder, Margahayu, PLG						√
Gaya Baru, Rawa Betik, Cempaka Putih						
Sukaresmi, Kuala Penet						
Leter T, Kali Batin						
Way Bungur dan sekitarnya		√				
Camp C, Saporu, Braja Kencana		√	√			√
Camp D1, Tarzan, Cengok, Camp D2	√	√	√	√		
Camp D1, Tarzan, Cengok, Camp D2	√	√		√		
Camp D2, Cengok, Kali Biru atas, Camp D2	√	√				√
Plang Hijau, Rawa Kerek dan sekitarnya						
GNRHL RPTN Plang Hijau						

GNRHL RPTN Plang Hijau						
Susunan Baru, Tegal Yoso, Bungur						√
Rawa Kerek, Way Kanan atas	√			√		√
Camp D2, Rawa Badak, Jalur Jeruk	√		√	√		
Terobosan, Way Sekapok, Beruang, Camp D1	√	√		√		
Rawa Kerek dan sekitarnya						
Tegal Yoso dan sekitarnya		√				
Rawa Kerek, Way Kanan atas	√		√			√
Plang Hijau, PLG, Rawa Bunder, Gambas RI dan sekitarnya						√
Camp D1, Air Hitam, Gerbang Toll, Central Wako, D2	√	√	√	√		√
Plang Hijau, Desa Labuhan Ratu VI						
D1, Camp Siang dan sekitarnya	√		√			
Susunan Baru dan sekitarnya						
Gaya Baru, Rumbia						
Bungur, Rantau Jaya, Kertosono						√
Susunan Baru dan sekitarnya						
Suka Resmi RPTN Kuala Penet						
D2, Rawa Badak, Tanah Tinggi, D2	√		√	√		
D2, Way Kanan atas, Rawa Bunder	√		√	√		√
Cabang, Penanggungan, Bungur						√
Rawa Kerek dan sekitarnya						
Plang Hijau, Rawa Kerek, Darmaji, Gambas RI dan sekitarnya						
Tegal Yoso dan sekitarnya		√				
SRS, Camp C		√		√		√
Bungur dan sekitarnya						√
Plang Hijau, Margahayu, PLG dan sekitarnya						
Tegal Yoso dan sekitarnya						
Plang Hijau, Rawa Kerek dan sekitarnya						
Polres Lampung Timur						
Way Kanan, D2, Rawa Badak			√	√		
Kantor Balai TNWK						

Gambas RI, Way Serayu						√
Way Kanan, D1, Capangan, Kuala Kambas						
Tegal Yoso dan sekitarnya		√				
Plang Hijau, Margahayu dan sekitarnya						√
Cabang, Sungai Bayan						√
SRS, Rawa Kerek		√		√		
BPDAS Bandar Lampung						
BPDAS Bandar Lampung						
Desa Proyek, Desa Cempaka Putih						
Way Kanan, SRS dan sekitarnya			√	√		√
BPDAS Bandar Lampung						
Plang Hijau, Margahayu dan sekitarnya						√
Way Kanan, Kuala Kambas						

#### DETAILS OF RHINO SIGN

Patrol Area	Footprints	Direct Sighting	Wallow	Feeding	Dung	Other Signs
Camp C, Saporo, Braja Kencana	0	0	0	0	0	0
Camp D1, Tarzan, Cengok, Camp D2	0	0	1	0	7	4
Camp D1, Tarzan, Cengok, Camp D2	0	0	0	0	1	0
Camp D2, Cengok, Kali Biru atas, Camp D2	0	0	1	2	4	5
Rawa Kerek, Way Kanan atas	1	0	1	1	2	1
Camp D2, Rawa Badak, Jalur Jeruk	0	0	0	0	2	1
Terobosan, Way Sekapok, Beruang, Camp D1	3	0	2	1	7	6
Rawa Kerek, Way Kanan atas	0	0	0	0	2	0
Camp D1, Air Hitam, Gerbang Toll, Central Wako, D2	9	0	0	1	0	2
D1, Camp Siang dan sekitarnya	0	1	4	1	2	0
D2, Rawa Badak, Tanah Tinggi, D2	0	0	1	2	0	9
D2, Way Kanan atas, Rawa Bunder	1	0	0	0	0	0
Cabang, Penanggungan, Bungur	0	0	0	0	0	0
SRS, Camp C	0	0	0	0	0	0
Way Kanan, D2, Rawa Badak	0	0	0	0	0	0
SRS, Rawa Kerek	0	0	0	0	0	0
Way Kanan, SRS dan sekitarnya	0	0	0	0	0	0

Patrol Area	Footprints	Direct Sighting	Wallow	Feeding	Dung	Other Signs
Camp C, Saporu, Braja Kencana	0	0	0	0	0	0
Camp D1, Tarzan, Cengok, Camp D2	0	0	1	0	7	4
Camp D1, Tarzan, Cengok, Camp D2	0	0	0	0	1	0
Camp D2, Cengok, Kali Biru atas, Camp D2	0	0	1	2	4	5
Rawa Kerek, Way Kanan atas	1	0	1	1	2	1
Camp D2, Rawa Badak, Jalur Jeruk	0	0	0	0	2	1
Terobosan, Way Sekapok, Beruang, Camp D1	3	0	2	1	7	6
Rawa Kerek, Way Kanan atas	0	0	0	0	2	0
Camp D1, Air Hitam, Gerbang Toll, Central Wako, D2	9	0	0	1	0	2
D1, Camp Siang dan sekitarnya	0	1	4	1	2	0
D2, Rawa Badak, Tanah Tinggi, D2	0	0	1	2	0	9
D2, Way Kanan atas, Rawa Bunder	1	0	0	0	0	0
Cabang, Penanggungan, Bungur	0	0	0	0	0	0
SRS, Camp C	0	0	0	0	0	0
Way Kanan, D2, Rawa Badak	0	0	0	0	0	0
SRS, Rawa Kerek	0	0	0	0	0	0
Way Kanan, SRS dan sekitarnya	0	0	0	0	0	0

### PATROL DATA

Location	Activity	Start Date	End Date	Days	No of Person	Length (Km)	Remarks
1	2	3	4	5	6	7	8
Camp C, Saporu, Braja Kencana	Patrol /Survey	16 - Jan	20 - Jan	5	4	20,10	No rhino signs. No illegal activity.
GNRHL RPTN Plang Hijau	Patrol /Survey	4 - Jan	4 - Jan	1	5	5,00	No illegal activity.
GNRHL RPTN Plang Hijau	Patrol /Survey	5 - Jan	5 - Jan	1	4	0,00	No illegal activity.
Rawa Kerek, Way Kanan atas	Patrol /Survey	26 - Jan	30 - Jan	5	4	13,80	Signs of rhino. Signs of old fishing.
Rawa Kerek, Way Kanan atas	Patrol /Survey	8 - Feb	13 - Feb	6	5	22,00	Old sign of rhino. Old sign of illegal activity.
D2, Way Kanan atas, Rawa Bunder	Patrol /Survey	23 - Feb	27 - Feb	5	6	15,00	No rhino signs. Detected of illegal activity.

Plang Hijau, Rawa Kerek, Darmaji, Gambas RI dan sekitarnya	Patrol /Survey	17 - Feb	20 - Feb	3	6	0,00	Detected track of trespassers.
Plang Hijau, Rawa Kerek dan sekitarnya	Patrol /Survey	4 - Mar	5 - Mar	2	6	13,50	Detected active track of trespassers (using motor cycle).
Plang Hijau, Margahayu dan sekitarnya	Patrol /Survey	19 - Mar	20 - Mar	2	3	6,00	Detected evidence of illegal logging.
Rawa Kerek dan sekitarnya	Patrol /Survey	4 - Feb	5 - Feb	2	6	0,00	No illegal activity
Cabang, Sungai Bayan	Patrol /Survey	21 - Mar	23 - Mar	3	7	13,01	Arrested 3 suspects and its evidence.
BPDAS Bandar Lampung	Meeting	13 - Mar	14 - Mar	2	4	0,00	Done
Desa Proyek, Desa Cempaka Putih	Law Enforcement	24 - Mar	25 - Mar	2	4	0,00	Deliver letter to suspect's family
Gambas RI, Kolam Darmaji	Patrol /Survey	1 - Jan	2 - Jan	2	7	0,00	No illegal activity
Sukaresmi, Kuala Penet	Patrol /Survey	9 - Jan	10 - Jan	1	4	4,30	No illegal activity
Way Bungur dan sekitarnya	Patrol /Survey	14 - Jan	15 - Jan	2	4	1,80	Drove elephant to forest.
Camp D1, Tarzan, Cengok, Camp D2	Patrol /Survey	16 - Jan	20 - Jan	5	5	19,20	Detected signs of rhino, tiger and elephant. No illegal activity.
Susukan Baru, Tegal Yoso, Bungur	Patrol /Survey	24 - Jan	25 - Jan	2	4	0,00	No elephant attack
Camp D2, Rawa Badak, Jalur Jeruk	Patrol /Survey	27 - Jan	29 - Jan	3	4	14,00	Detected dung, and other sign of rhino. Detected signs of tapir and tiger.
Susukan Baru dan sekitarnya	Patrol /Survey	7 - Feb	7 - Feb	1	2	0,00	No illegal activity
Bungur, Rantau Jaya, Kertosono	Patrol /Survey	19 - Feb	21 - Feb	3	4	0,00	Detected evidence of gelam cutted trees (logs). No illegal activity.
Susukan Baru dan sekitarnya	Patrol /Survey	22 - Feb	23 - Feb	2	4	0,00	No illegal activity
Suka Resmi RPTN Kuala Penet	Patrol /Survey	8 - Feb	9 - Feb	2	2	0,00	Detected information about poachers.
Cabang, Penanggungan, Bungur	Patrol /Survey	24 - Feb	27 - Feb	4	4	40,00	Arrested 2 (of 4) suspects of illegal logging.

							Inactivated 6 snares.
Bungur dan sekitarnya	Patrol /Survey	2 - Mar	3 - Mar	2	4	0,00	Detected track of trespassers.
Polres Lampung Timur	Law Enforcement	5 - Mar	5 - Mar	1	3	0,00	Delivering information for judicial process.
Kantor Balai TNWK	Law Enforcement	12 - Mar	12 - Mar	1	3	0,00	Delivering information for judicial process.
BPDAS Bandar Lampung	Meeting / other activity	20 - Mar	20 - Mar	1	4	0,00	Done
BPDAS Bandar Lampung	Meeting / other activity	26 - Mar	28 - Mar	3	5	0,00	Done
Way Kanan, Kuala Kambas	Patrol /Survey	30 - Mar	31 - Mar	2	5	20,00	Checking abandoned ancroachment area.
Way Bungur dan sekitarnya	Patrol /Survey	3 - Jan	3 - Jan	1	4	0,00	Drove elephant to the forest.
Way Bungur dan sekitarnya	Community Outreach	4 - Jan	4 - Jan	1	3	0,00	Socialization on using non chemical substant.
Rantau Jaya Udik RPTN Susukan Baru	Patrol /Survey	5 - Jan	5 - Jan	1	2	0,00	Information on traditional poaching.
Rawa Kerek, Kolam Darmaji dan sekitarnya	Patrol /Survey	6 - Jan	9 - Jan	3	3	9,00	Detected track of trespassers. Detected signs of elepant group visited that area.
Gaya Baru, Rawa Betik, Cempaka Putih	Community Outreach	7 - Jan	9 - Jan	3	3	0,00	Socialization on using non chemical substant.
Leter T, Kali Batin	Patrol /Survey	9 - Jan	9 - Jan	1	3	6,00	Detected of active track for illegal fishing.
Camp D1, Tarzan, Cengok, Camp D2	Patrol /Survey	16 - Jan	20 - Jan	5	4	12,00	Detected signs of rhino, elephant, tapir and tiger.
Terobosan, Way Sekapok, Beruang, Camp D1	Patrol /Survey	25 - Jan	30 - Jan	6	6	35,50	Detected signs of rhino, elephant, tapir, tiger and sun bear. Collection of rhino dung samples.
Rawa Kerek dan sekitarnya	Patrol /Survey	1 - Feb	2 - Feb	2	4	7,00	No illegal activity
Tegal Yoso dan sekitarnya	Elephant attack	7 - Feb	8 - Feb	2	4	6,00	Drove elephant to the forest.
Camp D1, Air Hitam, Gerbang Toll, Central Wako, D2	Patrol /Survey	10 - Feb	15 - Feb	6	5	48,00	No illegal activity
Plang Hijau, Desa Labuhan Ratu VI	Community Outreach	12 - Feb	13 - Feb	2	3	0,00	Developed farmer group. Awareness program.
Gaya Baru, Rumbia	Community	8 - Feb	11 - Feb	4	2	0,00	Awareness program.

	Outreach						
Tegal Yoso dan sekitarnya	Elephant attack	17 - Feb	19 - Feb	3	4	0,00	Drove 25 elephants to the forest.
SRS, Camp C	Patrol /Survey	25 - Feb	1 - Mar	6	4	27,70	Detected signs of trespassers and wildlife.
Tegal Yoso dan sekitarnya	Elephant attack	4 - Mar	5 - Mar	2	4	14,00	Detected attacked plantation area by elephants.
Gambas RI, Way Serayu	Patrol /Survey	15 - Mar	17 - Mar	3	4	27,20	Detected active track of illegal activity. Detected 1 suspect of illegal alang-alang collection.
Tegal Yoso dan sekitarnya	Elephant attack	19 - Mar	20 - Mar	2	4	4,00	Drove elephant to the forest.
SRS, Rawa Kerek	Patrol /Survey	22 - Mar	26 - Mar	5	6	7,23	Detected signs of elephant and tapir.
RPTN Rawa Bunder, Margahayu, PLG	Patrol /Survey	6 - Jan	9 - Jan	4	8	28,00	Detected illegal grazing.
Camp D2, Cengok, Kali Biru atas, Camp D2	Patrol /Survey	16 - Jan	20 - Jan	5	4	23,50	Detected an old cabin for bird trapping. Detected signs of rhino, elephant and tiger.
Plang Hijau, Rawa Kerek dan sekitarnya	Patrol /Survey	22 - Jan	24 - Jan	2	4	32,00	No illegal activity.
Plang Hijau, PLG, Rawa Bunder, Gambas RI dan sekitarnya	Patrol /Survey	7 - Feb	11 - Feb	5	4	11,40	Detected active track of illegal activity.
D1, Camp Siang dan sekitarnya	Patrol /Survey	13 - Feb	16 - Feb	4	3	17,50	Direct sighting and v ideo filming a calf and a female rhinos.
D2, Rawa Badak, Tanah Tinggi, D2	Patrol /Survey	24 - Feb	29 - Feb	6	4	19,00	Signs of rhino, tiger and tapir. No illegal activity.
Plang Hijau, Margahayu, PLG dan sekitarnya	Patrol /Survey	4 - Mar	5 - Mar	2	4	7,50	Detected track of illegal grazing.
Way Kanan, D2, Rawa Badak	Patrol /Survey	7 - Mar	9 - Mar	3	20	4,50	Signs of tapir, tiger and sunbear.
Way Kanan, D1, Capangan, Kuala Kambas	Patrol /Survey	15 - Mar	18 - Mar	4	11	45,00	No illegal activity. Detected visit of fisherman to find water supply.
Way Kanan, SRS dan sekitarnya	Patrol /Survey	22 - Mar	26 - Mar	5	5	12,50	Signs of tiger. Detected old camp of



							bird trapping.,
Plang Hijau, Margahayu dan sekitarnya	Patrol /Survey	27 - Mar	29 - Mar	3	4	6,00	Detected 2 firewood collectors. Detected 2 suspect of fishing and 3 suspects of illegal grazing.

#### GENERAL PERFORMANCE PARAMETERS

Number of general activities	60
Number of Patrol and Surveys	46
Distance Walked (Kilometers)	618.24
Distance Walked for Patrol and Survey	594.24
Number of Field Days	181
Number of Field Days for Patrol and Survey	152
Field Days per-person per-month	15.00

A total of 60 activities were conducted during this quarter (January- March) of the year and among of them were 17 activities of patrol and surveys, which covering 351.53 km and field-days 14.72 days per person per month.

## PROGRAM PERSONNEL

(Summary of Field Days Per-Person Per-Month 1 JANUARY – 31 MARCH 2012)

Name of Personnel	Number of Field Days	Average Field Days/Month
Agus Riadi	22	7,33 (3 Month )
Amrodi	43	14,33 (3 Month )
Aris Hendriyanto	47	15,67 (3 Month )
Balyan Irawadi	51	17,00 (3 Month )
Bambang Meiyono	51	17,00 (3 Month )
Bonari	50	16,67 (3 Month )
Boston Kaloko	42	14,00 (3 Month )
Daryono	49	16,33 (3 Month )
Encang Sutarma	49	16,33 (3 Month )
Ferry Agus Bangun	51	17,00 (3 Month )
Joko Iswanto	42	14,00 (3 Month )
Muslimin	42	14,00 (3 Month )
Nur Basuki	36	12,00 (3 Month )
Nurhadi	36	12,00 (3 Month )
Sugondo	40	13,33 (3 Month )
Suhadi	14	14,00 (1 Month )
Sujoko	42	14,00 (3 Month )
Supriyono	52	17,33 (3 Month )
Totok Riyadi	46	15,33 (3 Month )
Yusuardi	48	16,00 (3 Month )

### Other personnels :

1.	Hartato	Field Coordinator
2.	Rosdi Hartono	Adinistrative and Finance Officer
3.	Suyana	Driver
4.	Yahmin	Boat driver
5.	Suparmi	Cook
6	Dede Rahmat	Office boy

# **RPU-UK UJUNG KULON NATIONAL PARK**

## **HIGHLIGHTS**

- 1. Detected 1 rhino carcass in an area between transect 8 and 9.**
- 2. Detected footprint of two rhino (23/24 and 24/25).**
- 3. Survey along the “border” of JRSCA, no illegal activities.**
- 4. Exchange of duty of The Head of National Park and staffs. Ir. Agus Priambudi MSc, moved to Gunung Halimun – Salak National Park (West Java) and replaced by DR. Ir. Moch. Haryono (The new Head of Ujung Kulon NP).**
- 5. Inactivated 1 snare for mouse deer.**

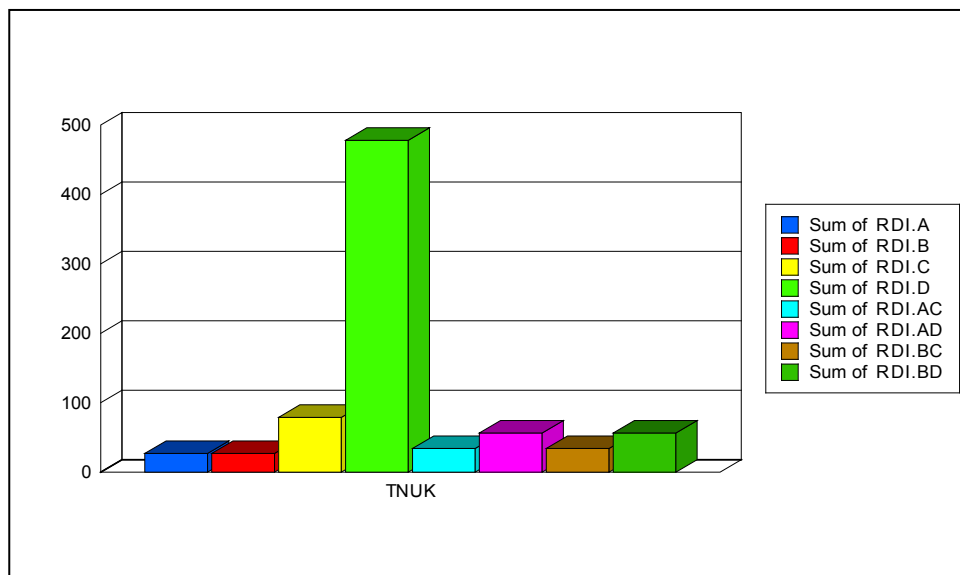
## BASIC POPULATION PARAMETERS

Number of Footprints	Number of Locations with rhino signs					
	Footprints	Wallows	Feces	Feeding	Other Signs*	Direct Sighting
27	54	9	6	11	1	0

\* Include Urine, Scratches, Rub

During the 30 Patrols/Surveys in this period, 81 independent signs of rhino were encountered, no direct sighting.

## RHINO DENSITY INDICATORS



Rhino		RPU Field Presence		Density Indicators			
A	B*	C	D	A/C	A/D	B/C	B/D
Number of print locations	Number of Rhino Signs*	Field Days**	Distance Walked***	Rhino prints/ 100 days	Rhino prints/ 1000 km	Rhino signs/ 100 days	Rhino signs/ 1000 km
27	27	79	478	34,18	56,49	54,18	56,46

(B\*) The total number of sign (excluding footprints) of rhino found. \*\* Total number of RPU group field days during surveys only (excluding other activities). \*\*\* Total number of range in kilometer covered by RPU group during surveys activity.

### ILLEGAL ACTIVITIES ENCOUNTERED

Encroachment	Timber Theft	Forest Product Theft	Illegal Hunting		
			Rhino / Trap	Non Rhino (Mammals)	Other
4	0	0	0	0	13

In UK, during the surveys and patrols a total of 17 cases of illegal activity were detected. The most cases encountered were poaching/trapping non big mammals as birds, fish. **No trap for rhino** encountered.

Record of cases as per attached in **Annex - 2**, which including: date of incidence, date of detection, type of offences, place of occurrence, evidence (forest/wildlife produces recovered).

### ENCOUNTERED ANIMALS

Patrol Area	√ = encountered			
	Rhino	Banteng (wild cattle)	Other Mammal	Offences
Tamanjaya, Handeuleum, Cihandeuleum, Cikabembem, Citelang, Cigenter, Balagadigi, Cikeuyeup, Legon Pakis	√	√	√	
Tamanjaya, Legon pakis, Soge, Gendir, Rorah Gede, Cilintang, Solokan Duyung, Cikokosan, Cihujan, Ciperepet	√	√	√	√
Tamanjaya, Citelang, Cangkok, tanjung tebing, Jamang		√	√	
Tamanjaya, Handeuleum, Citelang, Cikarang, Transek 9, Cangkok, Jamang, Legon Waru		√	√	
Tamanjaya,, legon pakis, rorah salman, Cilintang, Cihujan, KP peuteuy, Gendir, Cimahi, Cibandawoh	√			
Tamanjaya, Legon Pakis, Cilintang, CIsimping, Laban, Karang ranjang, Pamancatan, Pangorok, Sodong sero, Kalejetan, Cihujan	√	√	√	
Tamanjaya, Cigenter, Cikeuyeup, Gardu Bururk, Cidaon, Cukang galih, CIjengkol, Cibunar	√	√	√	
Tamanjaya, Karang ranjang, Bandawoh, Cikeusik, Cibunar, Cidaon	√	√	√	
Tamanjaya, Legon pakis, Kalejetan, Ermokla, Cegog, Sodong sero, Seuseupan, Solokan duyung, Cilintang, Kp. Peuteuy, Cipakis	√		√	√
Tamanjaya, Legon pakis, Kalejetan, Ermokla, Cegog, Sodong sero, Seuseupan, Solokan duyung, Cilintang, Kp. Peuteuy, Cipakis	√		√	

Patrol Area	√ = encountered			
	Rhino	Banteng (wild cattle)	Other Mammal	Offences
Tamanjaya, Legon pakis, Gendir, Cibatok, Kp. Peuteuy, Cilintang, Karang ranjang, Pangorok, Ciseuseupan, Cibanda - woh	√		√	√
Tamanjaya, Legon pakis, Pagar JARHISCA, Cibatok, Rorah Kawung Langkap, Karang ranjang, Pangukusan, Cibandawoh, Pangorok, Sodong sero	√	√	√	√

### DETAILS OF RHINO SIGN

Patrol Area	Footprints	Direct Sighting	Wallow	Feeding	Dung	Other Signs
Tamanjaya, Handeuleum, Cihandeuleum, Cikabembem, Citelang, Cigenter, Balagadigi, Cikeuyeup, Legon Pakis	1	0	0	1	0	0
Tamanjaya, Legon pakis, Soge, Gendir, Rorah Gede, Cilintang, Solokan Duyung, Cikokosan, Cihujan, Ciperepet	1	0	0	0	0	0
Tamanjaya,, legon pakis, rorah salman, Cilintang, Cihujan, KP peuteuy, Gendir, Cimahi, Cibandawoh	3	0	0	1	0	0
Tamanjaya, Legon Pakis, Cilintang, Cisimping, Laban, Karang ranjang, Pamancatan, Pangorok, Sodong sero, Kalejetan, Cihujan	3	0	5	5	4	1
Tamanjaya, Cigenter, Cikeuyeup, Gardu Bururk, Cidaon, Cukang galih, Cijengkol, Cibunar	5	0	1	1	0	0
Tamanjaya, Karang ranjang, Bandawoh, Cikeusik, Cibunar, Cidaon	4	0	3	3	1	0
Tamanjaya, Legon pakis, Kalejetan, Ermokla, Cego g, Sodong sero, Seuseupan, Solokan duyung, Cilintang, Kp. Peuteuy, Cipakis	3	0	0	0	0	0
Tamanjaya, Legon pakis, Kalejetan, Ermokla, Cego g, Sodong sero, Cilintang, Cipakis, Kp	3	0	0	0	0	0

peuteuy						
Tamanjaya, Legon pakis, Gendir, Cibatok, Kp. Peuteuy, Cilintang, Karangranjang, Pangorok, Ciseseupan, Cibandawoh	2	0	0	0	1	0
Tamanjaya, Legon pakis, Pagar JARHISCA, Cibatok, Rorah Kawung Langkap, Karangranjang, Pangukusan, Cibandawoh, Pangorok, Sodong sero	2	0	0	0	0	0

### PATROL DATA

Location	Activity	Start Date	End Date	Days	No of Person	Length (Km)	Remarks
Tamanjaya, Handeuleum, Cihandeuleum, Cikabembem, Citelang, Cigenter, Balagadigi, Cikeuyeup, Legon Pakis	Patrol / Survey	10 - Jan	18 - Jan	9	4	50,93	Detected rhino's footprints (24/23) and feeding. No illegal activities.
Tamanjaya,, legon pakis, rorah salman, Cilintang, Cihujan, KP peuteuy, Gendir, Cimahi, Cibandawoh	Patrol / Survey	13 - Feb	19 - Feb	7	4	58,52	Detected footprints of 2 rhinos ( 24/25 and 25/26) in Block Gendir. Detected rhino footprint in Block Karang Ranjang (23/24), and other signs (feeding, dung etc.).
Tamanjaya, Legon pakis, Kalejetan, Ermokla, Cegog, Sodong sero, Seuseupan, Solokanduyung, Cilintang, Kp. Peuteuy, Cipakis	Patrol / Survey	17 - Mar	21 - Mar	5	4	54,00	Detected of trespassing in Southern Beach. Inventoried exotic plant in Aermokla. Detected rhino foot -prints.
Tamanjaya, dsk.	Patrol / Survey	5 - Jan	10 - Jan	6	4	0,00	Preparation
Tamanjaya, legon pakis.	Patrol / Survey	19 - Jan	20 - Jan	2	4	0,00	No illegal activities.
tamanjaya, cikaung sabrang, gendir, cikaung kidul	Patrol / Survey	21 - Jan	22 - Jan	2	4	0,00	Trajectory of EWF of JRSCA,
Tamanjaya, dsk.	Patrol / Survey	5 - Jan	7 - Jan	3	4	0,00	Preparation for survey
cikawung, legon pakis, rorah salman	Patrol / Survey	8 - Feb	8 - Feb	1	4	10,00	Detected rhino foot- print in JRSCA area (24-25).
Legon pakis, karang ranjang, pangukusan, cibandawoh, laban	Patrol / Survey	20 - Feb	21 - Feb	2	4	35,00	Detected carcass of rhino in between transect 8 and 9. (detected possibly as young female rhino?).
Tamanjaya, dsk.	Patrol / Survey	5 - Mar	8 - Mar	4	4	0,00	Preparation for survey

Labuan, wira carita	Meeting	12 - Apr	12 - Apr	1	4	0,00	Replacement of Head of National Park. Wellcoming Dr. Haryono as the new Head of National Park.
Tamanjaya, Legon pakis, Soge, Gendir, Rorah Gede, Cilintang, Solokan Duyung, Cikokosan, Cihujan, Ciperepet	Patrol / Survey	10 - Jan	19 - Jan	10	4	43,36	JRSCA area : Detected rhino footprints (25/26). Detected honey collection, bird trapping and grazing.
Tamanjaya, Legon Pakis, Cilintang, CIsimping, Laban, Karang ranjang, Pamancatan, Pangorok, Sodong sero, Kalejetan, Cihujan	Patrol / Survey	10 - Feb	20 - Feb	11	4	70,25	Detected footprint of two rhino (23/24 and 24/25) in between Block Karang Ranjang – Kalejetan (along the Southern track).. And also feeding, wallow and dung.
Tamanjaya, Legon pakis, Kalejetan, Ermokla, C egog, Sodong sero, Cilintang, Cipakis, Kp peuteuy	Patrol / Survey	17 - Mar	21 - Mar	5	4	54,00	Detected footprints of two rhinos (25/24 and 26/25). Detected trespassing along the Southern track / beach.
Tamanjaya, dsk.	Patrol / Survey	5 - Jan	9 - Jan	5	4	0,00	No illegal activities
tamanjaya, cikaung sabrang, gendir, cikaung kidul	Patrol / Survey	20 - Jan	22 - Jan	3	4	0,00	Survey along the “border” of JRSCA, no illegal activities.
Tamanjaya, dsk.	Patrol / Survey	5 - Feb	7 - Feb	3	4	0,00	Preparation for survey
cikawung, legon pakis, rorah salman	Patrol / Survey	8 - Feb	8 - Feb	1	4	10,00	Detected rhino foot print in JRSCA area (24-25).
Tamanjaya, dsk.	Patrol / Survey	5 - Mar	8 - Mar	4	4	0,00	Preparation for survey
Labuan, wira carita	Meeting	12 - Apr	12 - Apr	1	4	0,00	Farewell and wellcoming the old and new Head of UKNP.
Tamanjaya, Citelang, Cangkok, tanjung tebing, Jamang	Patrol / Survey	10 - Jan	18 - Jan	9	4	35,60	No rhino signs. No illegal activities.
Tamanjaya, Cigen -ter, Cikeuyep, Gar- du Buruk, Cidaon, Cukang galih, Cljengkol, Cibunar	Patrol / Survey	10 - Feb	20 - Feb	11	4	31,00	Detected rhino signs (footprints, wallows, feeding). Detected illegal activity.
Tamanjaya, Legon pakis, Gendir, Cibatok, Kp. P euteuy, Cilintang, Karang ranjang, Pangorok, Ciseseupan, Ciba ndawoh	Patrol / Survey	17 - Mar	21 - Mar	5	4	40,27	Detected rhino footprints. Detected illegal activity.
tamanjaya, cikaung sabrang, gendir, cikaung kidul	Patrol / Survey	21 - Jan	22 - Jan	2	4	0,00	Along the JRSCA’s border
Tamanjaya, dsk.	Patrol / Survey	5 - Jan	9 - Jan	5	4	0,00	Decided a patrol plan and preparation of fieldwork.



Tamanjaya, dsk.	Patrol / Survey	5 - Feb	9 - Feb	5	4	0,00	Decided a patrol plan and preparation of fieldwork.
Tamanjaya, dsk.	Patrol / Survey	5 - Mar	8 - Mar	4	4	0,00	Decided a patrol plan and preparation of fieldwork.
Labuan, wira carita	Meeting	12 - Mar	12 - Mar	1	4	0,00	Farewell and well -coming the old and new Head of UKNP.
Tamanjaya, Handeu- leum, Citelang, Cika- rang, Transek 9, Cangkok, Jamang, Legon Waru	Patrol / Survey	10 - Jan	18 - Jan	9	4	25,20	No signs of rhino. No illegal activity.
Tamanjaya, Karang ranjang, Bandawoh, Cikeusik, Cibunar, Cidaon	Patrol / Survey	10 - Feb	20 - Feb	11	4	36,00	Detected signs of rhino (footprints, feeding, wallows, dung). Detected illegal activity.
Tamanjaya,Legon pakis,Pagar JARHISCA,Cibatok,Rorah Kawung Langkap,Karang ranjang,Pangukusan,Cibandawoh,Pangorok,Sodong sero	Patrol / Survey	17 - Mar	21 - Mar	5	4	40,27	Detected rhino footprints. Detected illegal activities along the Southern beach.
Tamanjaya, dsk.	Patrol / Survey	6 - Jan	9 - Jan	4	4	0,00	Decided a patrol plan and preparation of fieldwork.
tamanjaya, cikaung sabrang, gendir, cikaung kidul	Patrol / Survey	11 - Apr	11 - Apr	1	4	0,00	Along the JRSCA border or track of patrol road.
Tamanjaya, dsk.	Patrol / Survey	5 - Feb	9 - Feb	5	4	0,00	Decided a patrol plan and preparation of fieldwork.
Tamanjaya, dsk.	Patrol / Survey	5 - Apr	8 - Apr	4	4	0,00	Decided a patrol plan and preparation of fieldwork.
Labuan, wira carita	Meeting	12 - Mar	12 - Mar	1	4	0,00	Farewell and well -coming the old and new Head of UKNP.

### GENERAL PERFORMANCE PARAMETERS

Number of general activities	36
Number of Patrol and Surveys	30
Distance Walked (Kilometers)	594.4
Distance Walked for Patrol and Survey	594.4
Number of Field Days	184
Number of Field Days for Patrol and Survey	182
Field Days per-person per-month	15.33

A total of 36 activities were 30 patrols/surveys which have conducted during this quarter (January-March), covering 478.6 km and field-days of 15.33 days per person per month.

## PROGRAM PERSONNEL

(Summary of Field Days Per-Person Per-Month 1 January-31 March 2012)

Name of Personnel	Number of Field Days	Average Field Days/Month
Acep.S	45	15,00
Andri.duriat	54	18,00
Diding	54	18,00
Edi	45	15,00
Endin	48	16,00
Hadimi	45	15,00
Haerudin	54	18,00
IIn. Ruslani	37	12,33
JAJAT.S	48	16,00
Mulyani	48	16,00
Sorhim	37	12,33
SUNARDI	37	12,33
TISNO	54	18,00
Ujang.sukri	45	15,00
Yadi Suryana	37	12,33
Yusep.H	48	16,00

### Other personnels:

1.	Otong Sontani	Field Coordinator
2.	Agus Darmawan	Ass. FC for Administration and Finance
3.	M. Syamsudin	Ass FC for Database and technical report
4.	Samaun	Boat driver
5.	Elly	Ass. Boat driver /crew
6.	Odah	Cook
7.	Syaiful	Office boy

# YAYASAN BADAQ INDONESIA - YABI Rhino Foundation of Indonesia - RFI



## ANNEX- 2:

### QUARTERLY ACTIVITY AND PERFORMANCE REPORT

1 JANUARY - 31 MARCH 2012  
(Q1)

**ANNEX-2: OFFENSES OR ILLEGAL ACTIVITIES ENCOUNTERED DURING Q1 2012  
(January - March 2012)**

**1. OFFENSES IN BUKIT BARISAN SELATAN NP**

<b>Date</b>	<b>Remarks: Type of offense; Forest / WL produce recovered; Arm / Amunition recovered; People arrested</b>	<b>Age</b>	<b>Locations</b>	<b>Action Taken</b>
11 - Jan	Poaching; with evidences 6 snares for deer, wildpig and barking deer.	< 1 day	Umbul tugu ratu atas	Inactivated
12 - Jan	Logging; with evidences 1 cutted tree of 90 cm diameter, using chainsaw.	< 6 months	Hulu way tembulih	documented
14 - Jan	Bird trapping; with an old equipment.	< 1 year	Hulu way asahan, Talang simapang	documented
16 - Jan	Poaching with 2 active snares for mouse deer / napu.	< 1 month		Inactivated
16 - Jan	Poaching; an old camp and 1 elephant tooth.	?	Hulu way blambangan, Otok radang	documented
17 - Jan	An old encroachment of about > 4 ha	?	Pagelaran	Monitored
30 - Jan	Sign of bird trapping, by using net.	< 6 months	Bt.penetoh	documented
31 - Jan	Sign of poaching for mouse deer.	< 1 year	Bt.penetoh	documented
1 - Feb	Encroachment of about 5 ha,	< 1 month	Panama, Panjiwayang	documented
2 - Feb	Signs of bird trapping.	< 1 year	Hulu way ngambur	documented
23 - Feb	Plantation		Way ngambur bundik, Panjiwayang	documented
17 - Mar	Arrested 3 suspects of bird trapping, 2 nets.	< 4 days	Pematang bamban, ngaras	documented and inactivated the nets.
17 - Mar	An old camp of bird trapping	< 6 months	way ngaras	destroyed.

**2. OFFENSES IN WAY KAMBAS NP**

<b>Date</b>	<b>Remarks: Type of offense; Forest / WL produce recovered; Arm / Amunition recovered; People arrested</b>	<b>Age</b>	<b>Location</b>	<b>Action Taken</b>
19 - Feb	Detected 25 logs of gelam tree.	< 6 months	Kertosono RPTN Umbul Salam	documented
19 - Feb	Detected 40 logs of racuk tree.	< 1 months	Rantau jaya Ilir	documented
25 - Feb	Detected gelam logs of 10 cm diameter and 4 meter length.	< 6 months	Penanggungan	Documented and monitored
25 - Feb	Detected 20 gelam logs of 17 cm diameter and 4-6 meter length.	< 6 month/s	Penanggungan	Documented and monitored
25 - Feb	Detected 1 snare for deer / wildpig.	< 1 week	Penanggungan	Documented and inactivated
25 - Feb	Detected 3 snare for deer / wildpig.	< 1 month	Penanggungan RPTN	Documented and

			Umbul Salam	inactivated
26 - Feb	Arrested 2 (of 4) suspects illegal logging, with evidences : 1 hans saw, 1 long knife and ropes.	< 4 days	Penanggungan RPTN Umbul Salam	Documented and proceeded to the Police
26 - Feb	Detected 3 snares and other evidences.	< 1 week	Penanggungan	inactivated
20 - Mar	Detected 5 logs of racuk tree, of 10-15 cm diameter and 4 meter length.	< 1 month	Rawa Ketek RPTN Plang Hijau	Documented
20 - Mar	Tebangan kayu racuk 10 batang , diameter 10 cm dan panjang 4 meter	< 1 weeks	Proyek Pancasila RPTN Plang Hijau	Documented
23 - Mar	Arrested 2 (of 4) suspects, with 200 nibung logs of 12 m length.	< 4 days	Sungai Bayan RPTN Cabang	Arrested and proceed to the Investigating Officer.
23 - Mar	Arrested 1 suspect of illegal logging, with 100 logs of 12 m length evidence. meter	< 4 days	Sungai bayan RPTN Cabang	Arrested and proceed to the Investigating Officer. and the police.

### 3. OFFENSES IN UJUNG KULON NP

Date	Remarks: Type of offense; Forest / WL produce recovered; Arm / Amunition recovered; People arrested	Age	Location	Action Taken
15 - Jan	Signs of honey collection.	< 1 week	Blok Cikokosan	destroyed
15 - Jan	Signs of bird trapping.	< 1 week	Blok Cikokosan	inactivated
16 - Jan	Signs of honet collection with 1 camp.	< 1 week	Blok Cikokosan	destroyed
17 - Mar	Signs of illegal logging.	< 6 months	Blok Cibatok	documented
17 - Mar	Signs of illegal logging.	< 1 month	Blok Cibatok	documented
18 - Mar	Signs of illegal logging.	< 6 months	Blok Cibatok	documented
18 - Mar	Detected new encroachment	< 1 month	Blok Cikiruh	documented
19 - Mar	Detected signs of fishing.	< 4 days	Blok Pangukusan	inactivated
19 - Mar	Detected 1 camp of fishing.	< 1 month	Blok Pangukusan	destroyed
19 - Mar	Detected of evidences of fishing (molusc).	< 4 days	Blok Pertamina	documented
19 - Mar	Detected 1 camp of fishing.	< 6 months	blok seuseupan	destroyed
19 - Mar	Detected signs of fishing.	< 6 months	blok pangukusan	documented
19 - Mar	Detected signs of fishing.	< 1 week	Blok pangukusan	documented
19 - Mar	Detected signs of fishing.	< 1 month	Blok Pangukusan	documented
20 - Mar	Detected signs of fishing.	< 1 month	blok sodong sero	documented
20 - Mar	Detected 1 camp of fishing	< 6 months	blok pangorok	destroyed
20 - Mar	Detected 1 camp of fishing	< 1 month	blok seuseupan	destroyed
20 - Mar	Detected 1 snare for mouse deer.	< 1 month	Blok Seuseupan	inactivated
20 - Mar	Detected signs of fishing.	< 1 week	Blok Alor Bau	documented
21 - Mar	Detected 1 camp of fishing	< 1 month	Blok Alor jangkar	destroyed

# YAYASAN BADAQ INDONESIA - YABI Rhino Foundation of Indonesia - RFI



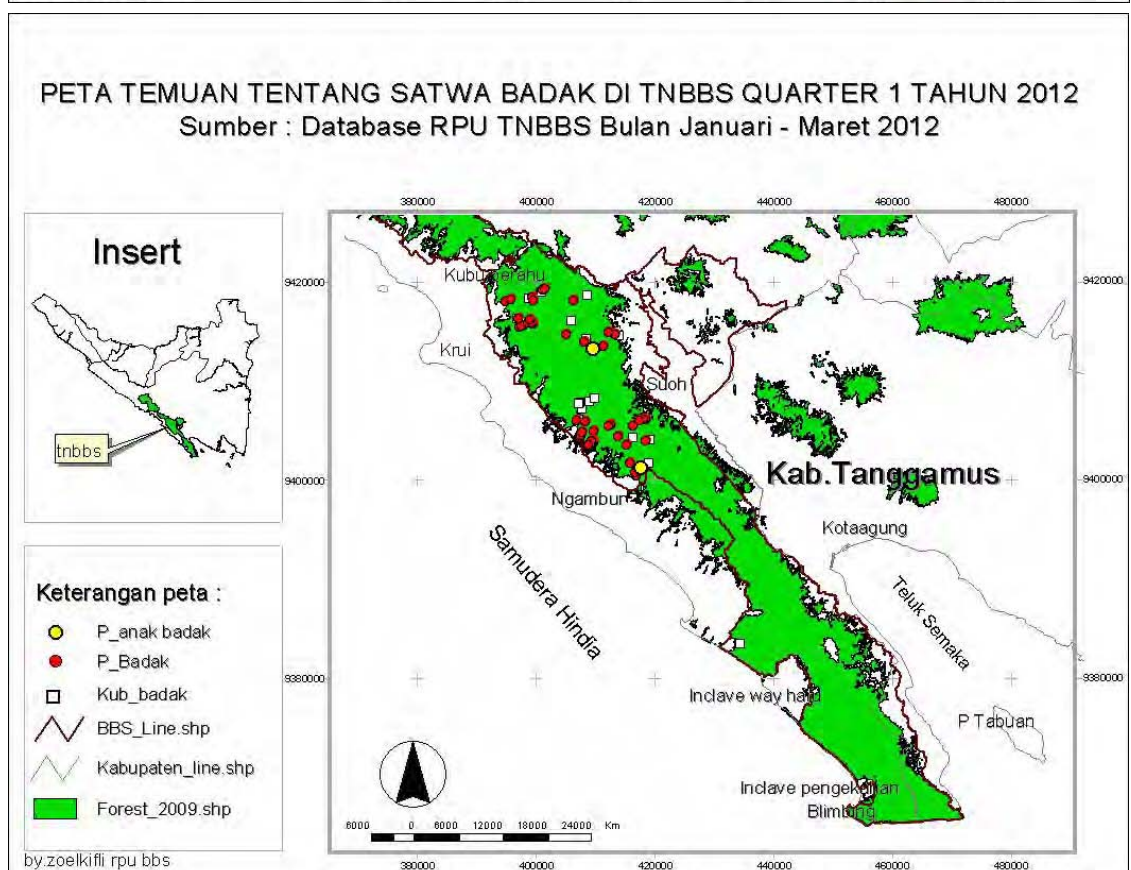
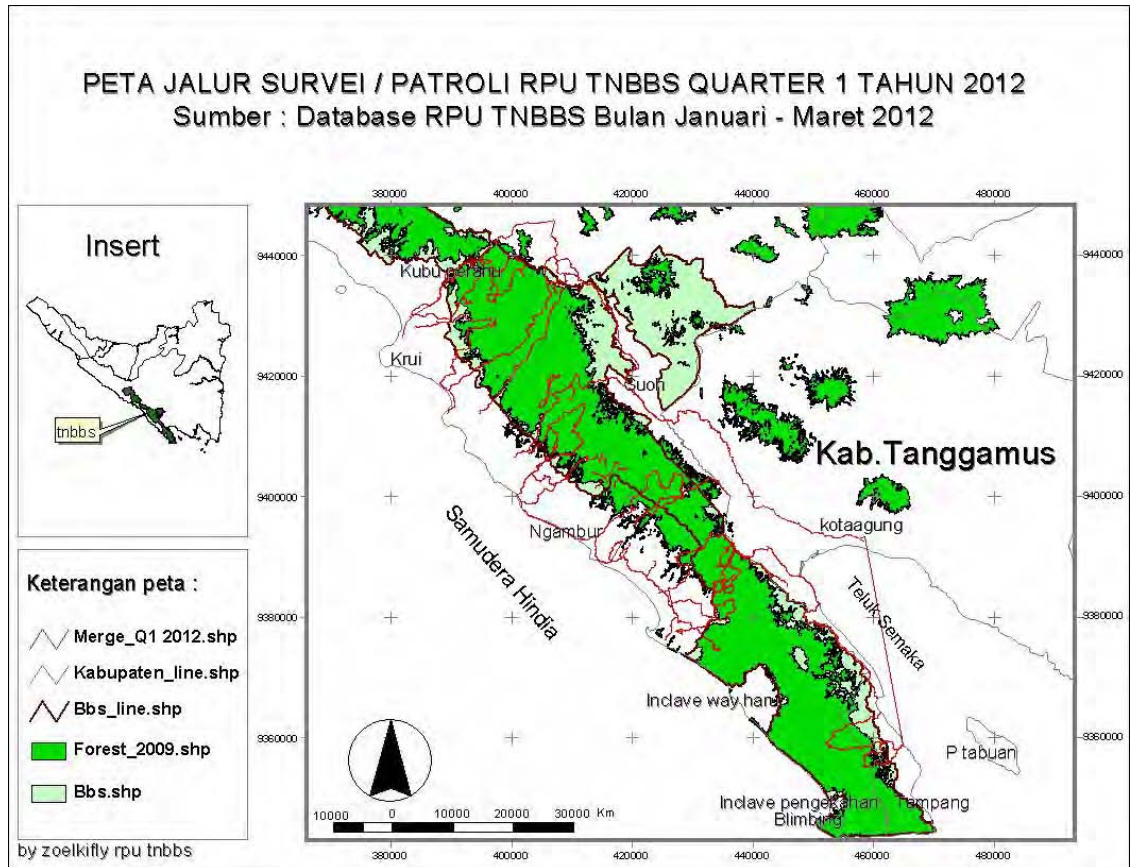
## ANNEX- 3:

### QUARTERLY ACTIVITY AND PERFORMANCE REPORT

1 JANUARY - 31 MARCH 2012  
(Q1)

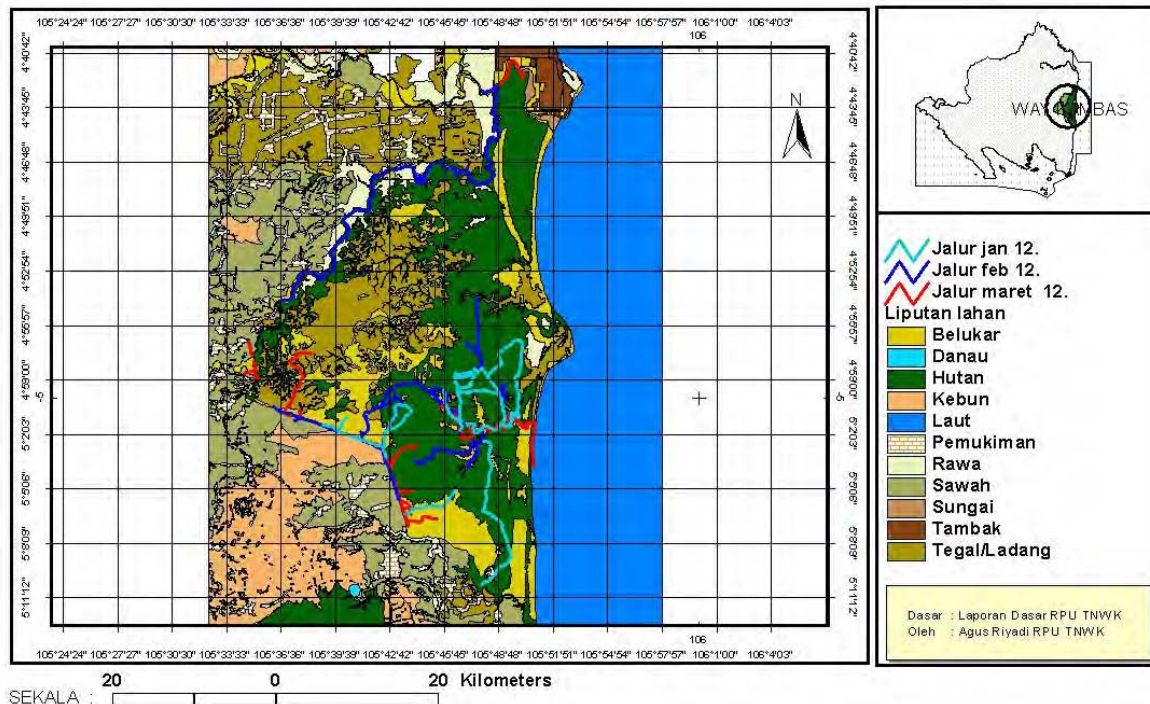
# ANNEX - 3: MAP OF RPU ACTIVITIES AND ACHIEVEMENT

## 1. Map of rhino foot-print encountered and Map of patrol route Q1 2012, in BBS NP

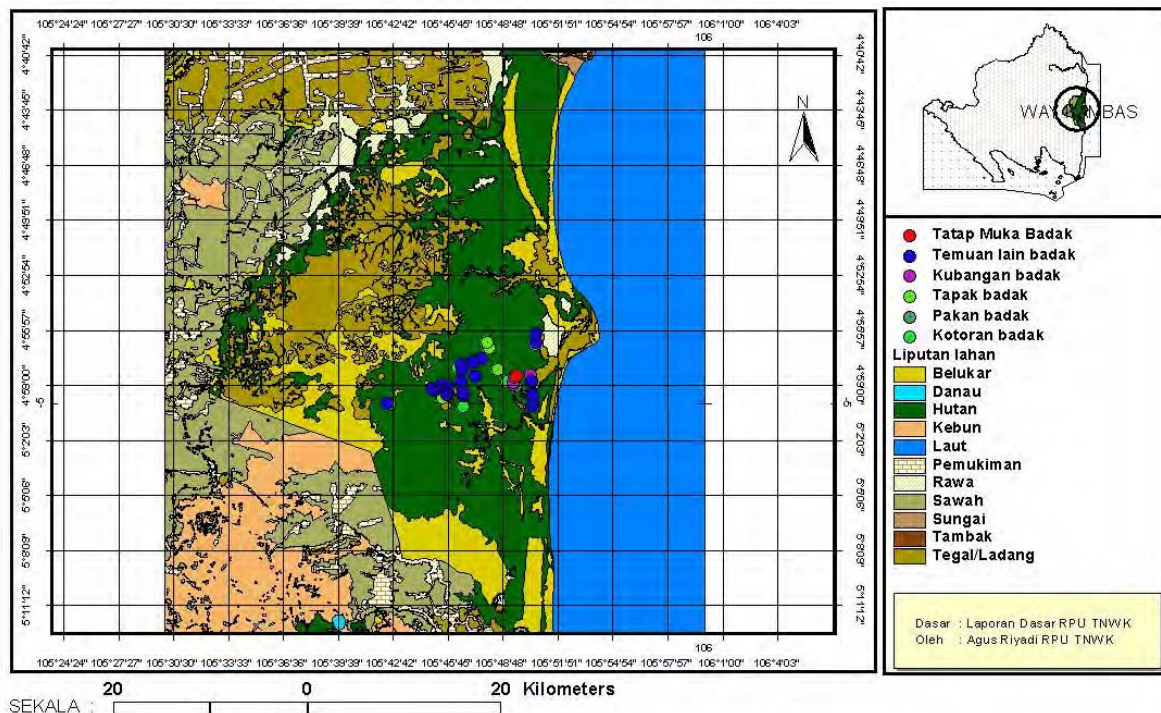




## 2. Map of Patrol route Q1 2012, in Way Kambas - NP

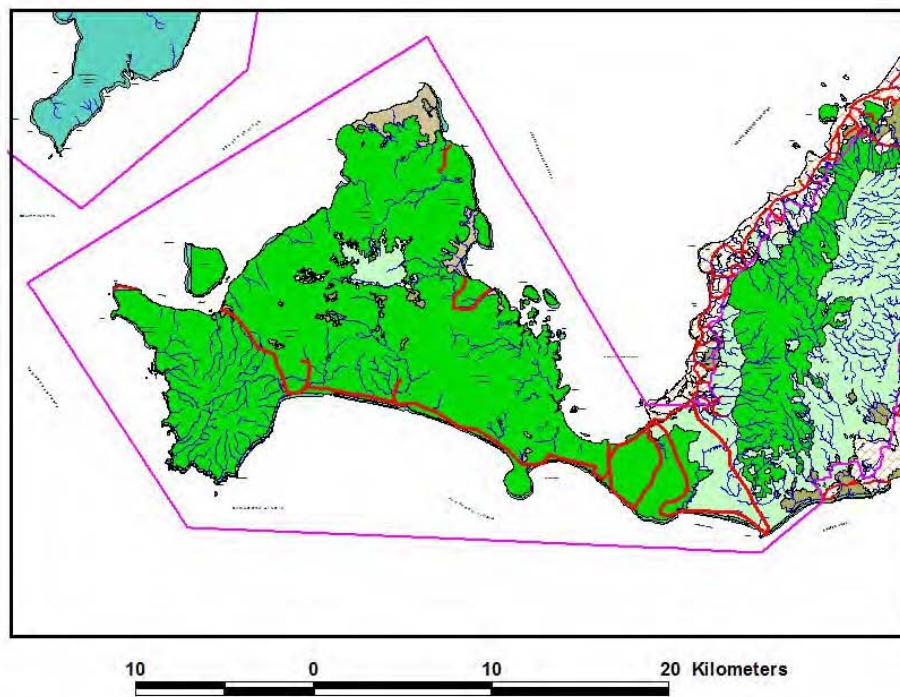


## 3. Map of rhino foot-print encountered Q1 2012, in Way Kambas - NP.





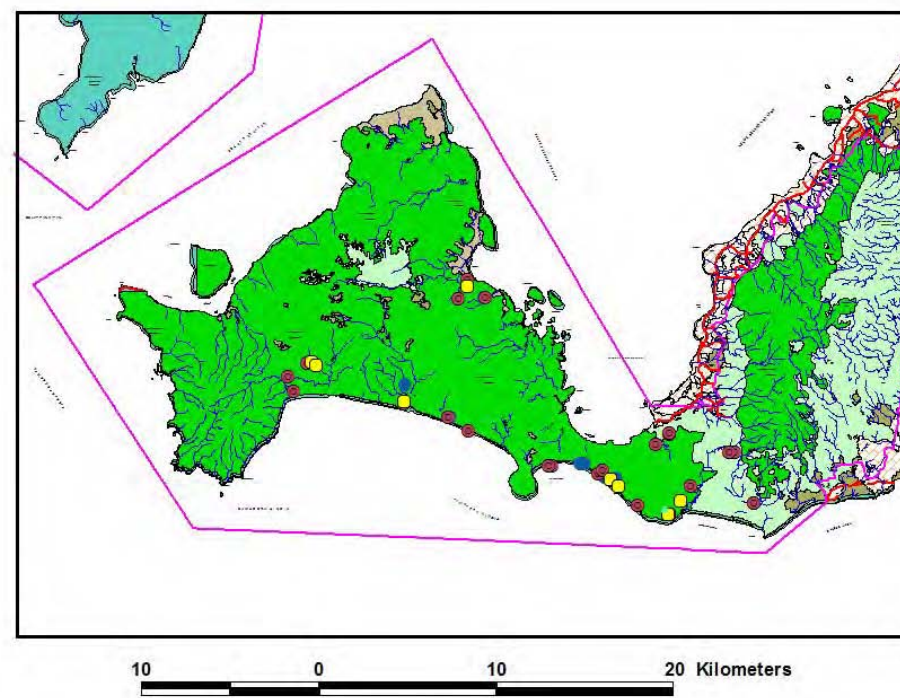
4. Map of patrol route of RPU Q1 2012, in Ujung Kulon - NP.



Map of patrol route  
Q1 2012  
RPU UK



5. Map of rhino foot-print and other sign of Javan rhino Q1 2012, in Ujung Kulon - NP



Map of Rhino footprint and othersign  
Q1 2012  
RPU UK

