



Pictures by: RPU Way Kambas - NP

**RHINO PROTECTION UNIT (RPU) ACTIVITIES & PERFORMANCE REPORT
BUKIT BARISAN SELATAN NP, WAY KAMBAS NP & UJUNG KULON NP
4TH QUARTER REPORT
1 OCTOBER - 31 DECEMBER 2011**

**PREPARED BY:
M. WALADI ISNAN & M. SYAMSUDIN**

**COMPILED BY:
YANKY AGUNG WAHYUDI**

**REVIEWED BY:
WIDODO S. RAMONO**

RHINO PROTECTION UNIT (RPU)



RPU's Patrol Units on Bukit Barisan Selatan - NP

PROJECT TITLE:

PROTECTION PROGRAM OF YAYASAN BADAQ INDONESIA

Reporting Period: October - December 2011

Name and Address of Grantee:

1. International Rhino Foundation (IRF)
Executive Director, International Rhino Foundation
138 Strasburg Reservoir Road
Strasburg, VA 22657
Tel/fax: 540-465-9595
Email: s.ellis@rhinos-irf.org
2. World Wide Fund for Nature
Kantor Taman A9, Unit A-1
Jl. Maga Kuningan, Jakarta 12950.
P.O.Box 5020 JKTM 12700
Phone: 021-5761070; Fax: 021-5761080

Authorship:

Reporting provided by Protection Manager (Mr. M. Waladi Isnan). Material and information gathered from field report and associated document.

Executive Summary:

The decline of Sumatran and Javan rhino has been in process for a long time. The Javan rhino for example was eliminated from Malaysia in the 1930's. Meanwhile, following the Sumatran rhino PHVA (1993) indicated that the decline of Sumatran rhino probably 50% during the last decade. The total population of Sumatran rhino in Indonesia is estimated only 215 – 319 and will be extinct for the next decade if there are no appropriate and serious management. (Strategy and Action Plan for the Conservation of Rhinos in Indonesia 2007 – 2017). Rhino decline in South East Asia is due to a combination of reduction in habitat and over exploitation of rhino (most recently by poachers after the horn). At this time, poaching pressure continues to be high in Indonesia, hence there is a strong need of this country to emphasize anti-poaching activities. To this the rhino protection program of Yayasan Badak Indonesia (YABI) is activated to answer the need. Rhinoceros is subject to poaching pressure both from hunters and form trappers, they use wire snares and other traps that maims to kill animals. The method employed in poaching prevention are primarily in forms of field patrols to search for traps and other signs of poaching attempt, to destroy these traps, and to collect evidence to identify and apprehend the suspects involved. While in support to field patrol intelligence activities is operated to assist in the apprehension of poachers and identify the routes of illegal trade of protected animal parts (horn, skin, hooves etc.).

The Indonesian Rhino Protection Program of YABI integrates partners of governmental and non-governmental namely Directorate General of Forest Protection and Nature Conservation of the Ministry of Forestry, International Rhino Foundation and World Wide Fund for Nature as well as local villager. The program entails series of approaches that included wild population protection by intensive patrolling of areas to detect traps and arrest intruders, more intensive and extensive surveys and monitoring of the rhino population and intelligence operations to assist in the apprehension of poachers and identify of routes used for the horn trade and establishment of rhino database system using the Geographic Information System (GIS) techniques.

The Indonesian Rhino Conservation Program (that was originated from GEF Project and that since 2008 has merged into YABI) and this Rhino Protection Program of YABI fully understood that the program is very costly. But, it is important to bring an understanding the operation of Rhino Protection Units (RPUs) backed-up by Intelligence and Law Enforcement Unit (ILEU) is the most effective measure in protection of rhinos in the wild. Therefore it is important to develop a simultaneously funding plan for sustainability of rhino conservation program.

Introduction:

The decline of both species of rhinoceros, Sumatran and Javan, has been in process for a long time. The population of Sumatran rhino has been reduced to 50% in the last decade and will be extinct for the next decade if there are no serious and appropriate management of rhino. Its decline in range and number in Sumatra is attributed chiefly to fragmentation of its habitat through indiscriminate forest clearance and to poaching, stimulated by the illegal trade in horns, skin and hooves, and other parts of rhino's body.

A population and Habitat Analysis conducted in November 1993 in conjunction with the IUCN SSC and its Conservation Breeding Specialist Group (CBSG) and the AsRSG revealed a significant decline in the numbers of Sumatran rhino in Indonesia. The estimates that emerged from the new data and more rigorous assessment was around 200 (215 - 319). Meanwhile, the previous estimate had been 420 - 875. The GEF project RPU YABI estimates that until June 1998 the presence the population of Sumatran rhino in Kerinci Seblat National Park 27 - 32, Bukit Barisan Selatan National Park 40 - 50, and Way Kambas National Park 24 - 30

Although the Javan rhino population in Ujung Kulon National Park seems to be holding at about 30 - 47 as reported by National Park Office in December 2011, yet the threat of poaching still remains. The loss of rhino has become a matter of global concern. In 1994, at least one rhino was poached in Ujung Kulon and a suspect has been identified but no prosecution has in progress at that time. Between May and June 2010, there were skeletal of 3 carcasses of Javan rhino had been evacuated from the field without any evidence of poaching or diseases. Although rhino poaching evidence and or attempt was not found

during this quarter, poaching of other wildlife such as small mammals, birds, fish were still occurring.

Saving the remaining rhino population needs further alternatives. There should be series of efforts to protect the remaining population by activating rhino patrol and strengthening its anti-poaching activities, until poacher activity and habitat.

destruction is reduced to the point of elimination. The other activity which has just been implemented following the "Strategy and Action Plan for Conservation of Indonesian Rhinos 2007 - 2017" is the follow up process in developing the Javan Rhino Study and Conservation Area (JaRhiSCA) in Ujung Kulon National Park, Banten. The project launched by Governor of Banten and Minister of Forestry on 21 June 2010 had gone through various discussion and public consultations and could only be started by July 2011. The fencing part of the JaRhiSCA has to be halted awaiting for a complete management plan while habitat management in forms of control of the arenga palms has been continued. The 4th quarter has been utilized mainly for discussion, dissemination and interpretation of the benefits of the project in order helping the Javan rhino to survive.

With the development of grid system and arenga palm control sample plots a distinct result has shown that 2 male rhinos stay in JRSCA during this whole quarter.

Following a collaboration between YABI and Eijkman Foundation then technical training by Eijkman for YABI staff in rhino genetic sample collection and provision of genetic marker by Aaranyak Foundation to Eijkman, YABI has initiated survey genetic in this Quarter. By using DNA analysis from collected dung, hair, or other part of the rhino sample out of both Sumatran rhino (in BBS and Way Kambas) and Javan rhino (in UK), It is expected that we could identify all rhino individuals, its sex distribution, and its genetic relatedness.

The Protection Program of YABI provide protection from poaching and habitat disturbance for viable nucleus populations of Sumatran and Javan Rhinos through the establishment and operation of Rhino Protection Units, and supporting management, coordination and supervisory structures. Formerly, YABI had been operated 17 Rhino Protection Units (RPUs) until middle of 2009, while due to shortage of funding in this quarter, only 16 RPUs continued their operation in and surrounding areas of Bukit Barisan Selatan (7 RPUs), Way Kambas (5 RPUs) and Ujung Kulon (4 RPUs) National Parks. Specifically for the Ujung Kulon site RPU has to better pay attention to the JRSCA since 2 rhinos are occupying while the fence has not been built yet.

Objectives:

The objective of the Program is to contribute to the long-term viable conservation and management of Indonesian rhinos (the Javan rhino - *Rhinoceros sondaicus*, and the Sumatran rhino - *Dicerorhinus sumatrensis*) and their habitats in Java and Sumatra.

The Indonesian Rhino Protection Program of YABI itself addressed to enhance the capabilities of the Directorate General of Protection and Nature Conservation and associated wildlife agencies to arrest and reverse the decline of rhinoceros due to poacher activity and habitat disturbance toward the national and global goal of recovery of viable populations of rhino species in Indonesia.

Output:

1. Establishment and operate of at least 17 Rhino Protection Units (RPUs) in Sumatra and Java.
2. Establishment and operate Intelligence and Law Enforcement Unit to support law enforcement process which is undertaken by RPU and Park authority or proceed to identify information of threats from ILEU's informants for further judicial process.
3. Community facilitation for better livelihood and to reduce threats from surrounding community.
4. Development of Assistant Manager Protection of Sumatra that is responsible for the protection and ILEU in both BBS and Way Kambas area.

Changes: -

Progress:

The Rhino Protection Program of YABI provide protection from poaching and habitat disturbance for viable nucleus populations of Sumatran and Javan Rhinos through the establishment and operation of Rhino Protection Units (RPUs), and supporting management, coordination and supervisory structures. The outcome of operations of 7 RPUs in Bukit Barisan Selatan National Park (BBS NP), 5 RPUs in Way Kambas National Park (WK NP) and 4 RPUs in Ujung Kulon National Park (UK NP) is reported as seen in Annex 1. (*RPUs Activities Report Periode October - December 2011.*), as per attached.

During the implementation of this activity such as surveys and patrols the RPU/RMPU achieved numbers of surveys, distance walked and duration of time they have consumed in every each of their activities. The Team also encountered many cases of illegal activities/offenses in the National Parks, into which prosecution had been made through filing the cases and hand over the cases to local Police Stations.

The achievements of the Protection Program for this period *October – December 2011* is described below in *Annex 1*.

Records on illegal killing of animals and other forest offenses detected by both RPUs (BBS, WK and UK) and ILEU is shown in *Annex 2*. Then the map which showing patrol route, the rhino foot-print distribution encountered and location of illegal activity are shown in *Annex-3*. It can be noted that illegal activities in Way Kambas especially poaching for large animals had started again but successfully notified and stopped by RPU with dismantling of 9 snares in the northern parts of the park.

The field days per month of RPU's personnel is shown in Annex-1.

Intelligence and Law Enforcement Unit (ILEU) has been operating to identify the threats which come from surrounding people or outside of the Park; its operations also covers identifying possible facilitations for raising local's alternative income in order to reduce threats to the park and its rhinos. There are only 3 personnels in this unit that have to work in collaboration with informants, RPUs, Park Rangers and Police, in the case that they have a confirmed case and have to apprehend/arrest the suspect/s for further law enforcement efforts (judicial process). Although ILEU's base operation is in BBS and surroundings, they also available to assist ILEU operation in both WK and UK NPs.

ILEU's findings of their activities, together with RPU BBS findings, is reported in Annex-2,

Conclusions and Recommendation:

In this period, the average number of field days per month of every person of RPU has lest the Program required of 20 days per month.

But RPU UK reached the highest (21.33).

RPU BBS has achieved 17.26 from their 18 patrols/surveys activities (out of their total 48 activities). The other activities they involved were in collaborative operation, especially to remove encroachments.

RPU WK achieved 16.98 as the result of only 11 of all their 79 activities were patrols/surveys. While their other activities were involvement socialization/awarness in surrounding villages adjacent to the Park.

In UK, achieved the highest field days per month of every person 21.33 from their 12 patrol.

There was a direct sighting of a rhino in BBS, detected footprint of a young rhino and the female, and also encountered 127 rhino signs. While detected 38 signs including a young rhino in WK and 88 signs in UK.

In BBS, RPU arrested 4 suspects of illegal logging for judicial proses. Detected and inactivated 18 snares which mostly for small mammals.

In WK, arrested illegal fishing (37), grazing (11), Inactivated 9 (Check!!!) snares 1 for large animal and others for deer and wildboar. They were also detecting 288 ha of after fire (burned) area, fish poisoning in Way Negara Batin River and 1 elephant raid/attacking to plantation.

In UK, 7 suspects of bird trapping and 3 encroachment activity within JRSCA area.

The Program had found many rhino footprints in this period but it cannot be utilized to determine the number of rhino population. It still needs to be analyzed with the sophisticated method.

YAYASAN BADAQ INDONESIA - YABI Rhino Foundation of Indonesia - RFI



ANNEX- 1:

QUARTERLY ACTIVITY AND PERFORMANCE REPORT

1 OCTOBER - 31 DECEMBER 2011
(Q4)

RPU-BBS BUKIT BARISAN SELATAN NATIONAL PARK

Millstones:

- 1. Direct sighting of 1 rhino.**
- 2. Detected foot-prints of a young rhino and the mother (29 of Nov. 2011).**
- 3. Training and collection of faeces/dung and urine samples for DNA analysis.**
- 4. Detected and inactivated 18 active snares for non rhino mammals.**
- 5. Collaborative Operation to remove encroachment (58 ha) and detected other encroachment 100 ha.**
- 6. Arested and accomplished the investigation of suspects on encroachment and illegal logging (4); then submitted to attorney.**

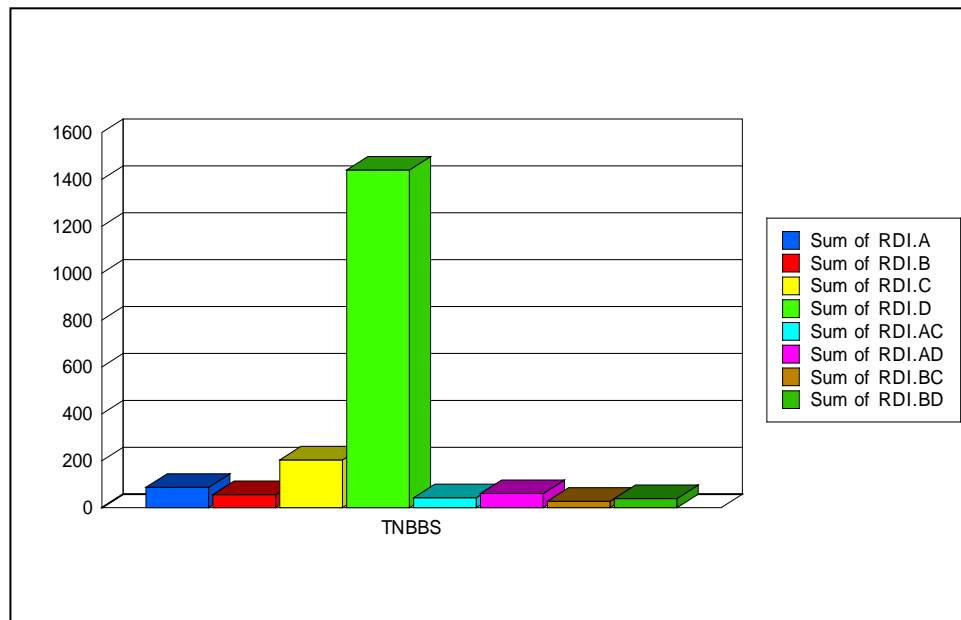
BASIC POPULATION PARAMETERS

Number of Footprints	Number of Locations with rhino signs					
	Footprints	Wallows	Feces	Feeding	Other Signs*	Direct Sighting
87	58	29	12	9	1	1

* Include Urine, Scratches, Rubbings, etc.

During the 18 patrols / surveys in this period, 127 independent signs of rhino were encountered and 1 direct sighting

RHINO DENSITY INDICATORS



Rhino		RPU Field Presence		Density Indicators			
A	B*	C	D	A/C	A/D	B/C	B/D
Number of print locations	Number of Rhino Signs*	Field Days**	Distance Walked***	Rhino prints/ 100 days	Rhino prints/ 1000 km	Rhino signs/ 100 days	Rhino signs/ 1000 km
87	56	204	1.440,00	42,65	60,42	27,45	38,89

(B*) The total number of sign (excluding footprints) of rhino found. ** Total number of RPU group field days during surveys only (excluding other activities). *** Total number of range in kilometer covered by RPU group during surveys activity.

ILLEGAL ACTIVITIES ENCOUNTERED

Gaharu * Theft	Encroachment	Timber Theft	Forest Product Theft	Illegal Hunting		
				Rhino / Trap	Non Rhino (Mammals)	Other
2	4	1	0	0	3	3

* Gaharu (a component for incense) theft is listed separately, because it is a major threat in any forest in Indonesia

In BBS, during the surveys and patrols a total of 13 cases of illegal activities were detected. The major case encountered were encroachments (old encroachments), then followed by non rhino hunting. **No trap of rhino** encountered.

Record of cases as per what attached in **Annex - 2**, which included: date of incidence, date of detection, type of offences, place of occurrence, evidence (forest/wildlife produces recovered, Arms/other evidence, suspects, legal status and comments.

ENCOUNTERED ANIMALS

Patrol Areas	Rhino	Elephant	Tiger	Tapir	Other	Offences
Buper sukaraja atas, Anak way pemerihan dsk						
Rata agung, Simpang kakaret dsk						
Bandar lampung, Kotaagung, Krui, Liwa dsk						
Penengahan dsk						v
Polsek Pringsewu						
Rata agung dsk						
Rata agung, Simpang kandis dsk						
Manula, Simpang clurut, Merpas dsk						
Rhino camp, Hulu way bamban, Kandang satwa, Jl. lintas sukaraja-bengkunat dsk		v		v		v
Rata agung dsk						
Dermaga 2 (pelabuhan kota agung)						
Way ngaras, Hulu way ngaras, hulu way tembulih dsk		✓		✓		
Km 50, Kuyung ngarang, Pemancingan, Way pemerihan, Tl.jhoni, Jl. lintas sukaraja-		✓		✓		✓

bengkunat dsk						
Kotaagung, Krui dsk						
Pemerihan, Km.18, Km.26 dsk						
KM 50, Peninggaman, Pemerihan, Mendati, Siring balak dsk						
Way ngambur, Pangkalan, Way ngambur gundik dsk						
Belimbing, Pengekahan, Muara way paya, Hulu way paya, Hulu way nenok, Hulu way cina, Pengekahan, Karang berak dsk	v			v		v
Blimbing, Pengekahan, Peg. Ramping, Sinar ogan, Limus dsk		v	V	v	v	vv
Sukaraja atas, Peninggaman, Giritotok, Pal 50, Tulung bamban, Talang enam dsk						
Penengahan, Sugiwaras, Way nenok dsk	v	v	V	v		v
Tampang muda, Cukuh pandan, Hulu way kesugihan, Hulu way menjukut, Muara way blambangan, Blimbing, Wat sekawat dsk		v	v	v	v	
Pos Dal RPU BBTNBB						
Kantor Bidang II Sukaraja Aatas						
Bandar lampung, Kotaagung, Krui, Liwa dsk						
Kubu Perahu, Hulu way krui, Way tangkulak, Hulu simpang kanan dsk	✓		✓	✓		✓
Pematang langgar, Way rilau, Way tembulih dsk	v	v	v	v		v
Suoh, Sukamarga, Hulu way tembulih, Way tembulih, Hulu way rilau, Way rilau, Mendati dsk		v	v	v		
SP 2, Ngambur, Hulu way ngambur, Hulu way mendati dsk	v	v	v	v		

Sugiwaras, Mekar jaya, Talang simpang, Suburahman, Umbul tasik dsk						
Tirom, Karang berak dsk						
Sebarus, Hulu way tenumbang, Hulu way anderlung, Hulu way menterang, Kubuperahu dsk	v	v	v	v		
Bombon, Hulu way anderlung, Hulu way lubuk pring, Way lubuk pring, Tenumbang dsk	v	v	v	v		
Pahmongan, Way mahnay balak, Way mahnay lunik, Way tenumbang, Tlg.kebudu dsk	v	v	✓	✓		
KM 65, KM 67, Lemong, Rataagung, Lampung barat						
Hulu way krui, Kubuperahu, dsk Siring huwong 3, Pematang papan dsk	✓	✓	✓	✓		
Suoh, Hantatai, Bt.penetoh, Hulu way biha, Hulu way ngambur, Hulu way lubuk pring dsk	✓	✓		✓		✓
Way asahan, Tl.Simpang, Suburahman, Karang berak dsk						
Pal 50, Pemerihan, Way mendati, Panjiwayang, Krui dsk						
Bumiyan, Tebahlior, Kali pasir, Kubu gedung dsk		✓	✓	✓		
Buper, Bumi perkemahan sukaraja atas						
Bandar lampung, Kotaagung dsk						
Peninggaman, Pemerihan dsk						

DETAILS OF RHINO SIGN

Patrol Area	Footprint	Direct sighting	Wallow	Feeding	Faeces	Others
Rhino camp, Hulu way bamban, Kandang satwa, Jl. lintas sukaraja-bengkunat dsk	0	0	0	0	0	0
Way ngaras, Hulu way ngaras, hulu way tembulih dsk	0	0	0	0	0	0
Km 50, Kuyung ngarang, Pemancingan, Way pemerihan, Tl.jhoni, Jl. lintas sukaraja-bengkunat dsk	0	0	0	0	0	0
Belimbing, Pengekahan, Muara way paya, Hulu way paya, Hulu way nenok, Hulu way cina, Pengekahan, Karang berak dsk	0	0	2	0	0	0
Blimbing, Pengekahan, Peg. Ramping, Sinar ogan, Limus dsk	0	0	0	0	0	0
Penengahan, Sugiwaras, Way nenok dsk	1	0	0	0	0	0
Tampang muda, Cukuh pandan, Hulu way kesugihan, Hulu way menjukut, Muara way blambangan, Blimbing, Wat sekawat dsk	0	0	0	0	0	0
Kubu Perahu, Hulu way krui, Way tangkulak, Hulu simpang kanan dsk	18	0	4	1	6	0
Pematang langgar, Way rilau, Way tembulih dsk	3	0	1	0	1	0
Suoh, Sukamarga, Hulu way tembulih, Way tembulih, Hulu way rilau, Way rilau, Mendati dsk	0	0	0	0	0	0
SP 2, Ngambur, Hulu way ngambur, Hulu way mendati dsk	11	0	6	1	1	0
Sebarus, Hulu way tenumbang, Hulu way anderlung, Hulu way menterang, Kubuperahu dsk	11	0	0	1	1	0
Bombon, Hulu way anderlung, Hulu way lubuk pring, Way lubuk pring, Tenumbang dsk	0	0	1	0	0	0
Pahmongan, Way mahnay balak, Way mahnay lunik, Way tenumbang, Tlg.kebudu dsk	25	1	4	3	3	1
Hulu way krui, Kubuperahu, dsk	4	0	3	0	0	0
Siring huwong 3, Pematang papan dsk	10	0	8	1	2	0
Suoh, Hantatai, Bt.penetoh, Hulu way biha, Hulu way ngambur, Hulu way lubuk pring dsk	4	0	0	2	2	0
Bumiyan, Tebahlior, Kali pasir, Kubu gedung dsk	0	0	0	0	0	0

PATROL DATA

Location	Activities	Start Date	End Date	Days	No. of Person	Length (Km)	Remarks
Buper sukaraja atas, Anak way pemerihan dsk	Awareness	1 - Oct	2 - Oct	2	2	0,00	Done
Penengahan dsk	Patrol	4 - Oct	5 - Oct	2	2	0,00	Detected 5 cutted tree.
Polsek Pringsewu	Law enforcement	5 - Oct	6 - Oct	2	1	0,00	Burned all evidences in Police office
Rata agung, Simpang kandis dsk	Collaborative Operation	6 - Oct	15 - Oct	10	1	0,00	Decroyed about 6 ha coffe plantation and cabins of encroachers.
Rata agung dsk	Collaborative Operation	6 - Oct	15 - Oct	10	1	0,00	Idebtified encroachers; Decroyed their cabins and plantation;
Manula, Simpang clurut, Merpas dsk	Collaborative Operation	7 - Oct	15 - Oct	9	2	0,00	Burned 44 cabins and Decroyed 9 ha og plantation inside the Parkcoffee, pepper, cacao).
Rhino camp, Hulu way bamban, Kandang satwa, Jl. lintas sukaraja-bengkunat dsk	Patrol/Survey	9 - Oct	16 - Oct	8	1	0,00	Detected 1 active snare for deer.
Pemerihan, Km.18, Km.26 dsk	Patrol	17 - Oct	25 - Oct	9	3	39	Detected signs of illegal activity / bird trapping in Km 26;
KM 50, Peninggaman, Pemerihan, Mendati, Siring balak dsk	Patrol	31 - Oct	5 - Nov	6	2	0,00	No trespasser
Pematang langgar, Way rilau, Way tembulih dsk	Patrol/Survey	26 - Nov	7 - Dec	12	2	38	Detected signs of rhino (and others) and took a faeces/dung sample .

Kubu Perahu, Hulu way krui, Way tangkulak, Hulu simpang kanan dsk	Patrol/Survey	26 - Nov	9 - Dec	14	2	64	Detected signs of rhino (new and old) and footprint of young rhino and the mother..
Suoh, Sukamarga, Hulu way tembulih, Way tembulih, Hulu way rilau, Way rilau, Mendati dsk	Patrol/Survey	26 - Nov	6 - Dec	11	2	55	Detected foot-prints of rhino, elephant, tiger and tapir.
Sebarus, Hulu way tenumbang, Hulu way anderlung, Hulu way menterang, Kubuperahu dsk	Patrol/Survey	16 - Dec	28 - Dec	13	2	56	Detected foot-prints of rhino, elephant, tiger.
Bombon, Hulu way anderlung, Hulu way lubuk pring, Way lubuk pring, Tenumbang dsk	Patrol/Survey	17 - Dec	27 - Dec	11	2	70	Detected signs of tiger, elephant and tapir. No sign of rhino.
Pahmongan, Way mahnay balak, Way mahnay lunik, Way tenumbang, Tlg.kebudu dsk	Patrol/Survey	18 - Dec	28 - Dec	11	2	36	Detected signs of rhino (foot-prints; faeces; food; wallow ; screech. Took faeces/dung samples.
Bandar lampung, Kotaagung, Krui, Liwa dsk	Law enforcement	3 - Oct	14 - Oct	12	1	0,00	Finalized investigation to suspect Mr. Irvan bin Karim, Muktar Edi bin Kiemas and others.
Kotaagung, Krui dsk	Kegiatan lain	16 - Oct	22 - Oct	7	1	0,00	Arrested a suspect; Investigation to the suspect and eyewitnesses.

Bandar lampung, Kotaagung, Krui, Liwa dsk	Law enforcement	1 - Nov	18 - Nov	18	1	0,00	Accomplished investigation to suspects of encroachment (Mr. Muktar cs) and illegal logging (Mr. Irvan) and the evidences; then submitted to attorney .
Way ngaras, Hulu way ngaras, hulu way tembulih dsk	Patrol/Survey	16 - Oct	25 - Oct	10	5	66	No rhino signs. Direct sighting of elephants. Foot-print of tapir.
Penengahan, Sugiwaras, Way nenok dsk	Patrol/Survey	9 - Nov	18 - Nov	10	4	435	Detected old foot-prints of rhino, elephant, tiger and tapir.
Kantor Bidang II Sukaraja Aatas	Training	20 - Nov	25 - Nov	6	3	0,00	Training on how to collect rhino faeces and urine sample for DNA analysis.
SP 2, Ngambur, Hulu way ngambur, Hulu way mendati dsk	Patrol/Survey	26 - Nov	7 - Dec	12	3	100	Detected rhino foot-prints , but unable to collect faeces sample, because of hard rain.
KM 65, KM 67, Lemong, Rataagung, Lampung barat	Collaborative Operation	18 - Dec	22 - Dec	5	3	0,00	Decroyed more than 18 ha coffee plantation (encroachment).
Tampang muda, Cukuh pandan, Hulu way kesugihan, Hulu way menjukut, Muara way blambangan, Blimbing, Wat sekawat dsk	Patrol/Survey	15 - Oct	26 - Oct	12	6	42	No signs of rhino.
Sukaraja atas, Peninggeman, Giritotok, Pal 50, Tulung bamban, Talang enam dsk	Patrol	8 - Nov	13 - Nov	6	5	21	Detected an old encroachment . Detected of wildlife (elephant) conflict.in Sukaraja and surrounding.
Pos Dal RPU BBTNBS	Training	16 - Nov	18 - Nov	3	4	0,00	Selected 10 of 29 members (local people) of genetic survey team.

Kantor Bidang II Sukaraja Aatas	Training	20 - Nov	25 - Nov	6	4	0,00	on genetic survey
Way ngambur, Pangkalan, Way ngambur gundik dsk	Survey	2 - Nov	4 - Nov	3	2	0,00	Survey on location for camera trap installation.
Belimbing, Pengekahan, Muara way paya, Hulu way paya, Hulu way nenok, Hulu way cina, Pengekahan, Karang berak dsk	Patrol/Survey	7 - Nov	19 - Nov	13	5	0,00	No rhino sign.
Kantor Bidang II Sukaraja Aatas	Training	20 - Nov	25 - Nov	6	4	0,00	on genetic survey
Tirom, Karang berak dsk	Elephant conflict	2 - Dec	15 - Dec	14	4		Drove the encroachment , ruined their cabins and plantations.
Hulu way krui, Kubuperahu, dsk	Patrol/Survey	21 - Dec	30 - Dec	10	2	27	No illegal activity. Detected signs of rhino.
Rata agung, Simpang kakaret dsk	Collaborative Operation	1 - Oct	7 - Oct	7	2	0,00	Ruined 68 cabins and about 19 ha plantation
Dermaga 2 (pelabuhan kota agung)	Law enforcement	15 - Oct	17 - Oct	3	3	0,00	Arrested 1 suspect of hunting, and the evidences : 1 deer head and 1 sea turtle taxidermic.
Km 50, Kuyung ngarang, Pemancingan, Way pemerihan, Tl.jhoni, Jl. lintas sukaraja-bengkunat dsk	Patrol/Survey	16 - Oct	24 - Oct	9	6	0,00	Detected 5 active snares for deer / wildpig;
Rata agung dsk	Collaborative Operation	14 - Oct	28 - Oct	15	2	0,00	Ruined 23 cabins of encroachment (4.5 ha coffee and 1.5 ha pepper).

Blimbing, Pengekahan, Peg. Ramping, Sinar ogan, Limus dsk	Patrol/Survey	7 - Nov	18 - Nov	12	6	225	Detected signs of elephant, tapir, deer and tiger.
Sugiwaras, Mekar jaya, Talang simpang, Suburahman, Umbul tasik dsk	Collaborative Operation	28 - Nov	15 - Dec	18	4	0,00	Ruined plantation (coffee, pepper, etc.).

GENERAL PERFORMANCE PARAMETERS

Number of general activities	48
Number of Patrol and Surveys	18
Distance Walked (Kilometers)	1.513,86
Distance Walked for Patrol and Survey	1.440,15
Number of Field Days	440
Number of Field Days for Patrol and Survey	204
Field Days per-person per-month	17,26

A total of 48 activities were conducted during this quarter (Oct - Dec) of the year and among of them were 18 activities of patrol/surveys, which covering 1,440.15 Km and field-days 17.26 days per person per month. Out of their patrol activity, they involve in collaborative operation with The Park Administration to move encroachments and wildlife conflict resolution.

PROGRAM PERSONNEL

(Summary of Field Days Per-Person Per-Month 1 October – 31 December 2011)

Personnel	Days	Average	
		Field days / month	
Agung S	60	20,00	3 (month)
Agus Sulaeman	41	13,67	3 (month)
Bahara	54	18,00	3 (month)
Budiono	57	19,00	3 (month)
Hendra Wijaya	29	9,67	3 (month)
Heryanto	43	14,33	3 (month)
Jalisi	50	16,67	3 (month)
Madnurzen	43	14,33	3 (month)
Maris Feriyadi	58	19,33	3 (month)
Marsum	48	16,00	3 (month)
Merli Aroc Hulu	55	18,33	3 (month)
Nang Jamadi	24	24,00	1 (month)
Olih	47	23,50	2 (month)
Rahman	43	21,50	2 (month)
Romianto	60	20,00	3 (month)
Samsurizal	55	18,33	3 (month)
Saptono	24	8,00	3 (month)
Sinyo Handoko	29	14,50	2 (month)
Sudari	51	25,50	2 (month)
Suharsono	48	16,00	3 (month)
Syahroni	38	12,67	3 (month)
Teguh Taryono	45	15,00	3 (month)
Timbul TB	58	19,33	3 (month)
Toho	38	12,67	3 (month)
Uga Yogaswara	47	15,67	3 (month)
Zen Afrial	66	22,00	3 (month)

Other personnels :

1.	Titus Ramadhani	Field Coordinator
2.	Maman	Administrative and Finance staf of RPU BBS
3.	Nasarius S. Waja	Driver-1
4.	Suparmin	Driver-2
5.	Era Herawati	Cook-1
6.	Wawah	Cook-2
7.	Hari Saputra	Office boy-1
8.	Rubianto	Office boy-2

RPU-WK WAY KAMBAS NATIONAL PARK

MILLSTONES:

1. Detected groups of trespassers, no evidence of success in their illegal activities encountered.
2. Detected poisoned 1 river (Negara Batin River).
3. Arrested suspects of illegal fishing (37), illegal poaching (1), illegal grazing (11) and wildlife trade (1).
4. Detected and inactivated 9 snares.
5. Drove elephants back to the forest.
6. Detected 288 ha after fire area.

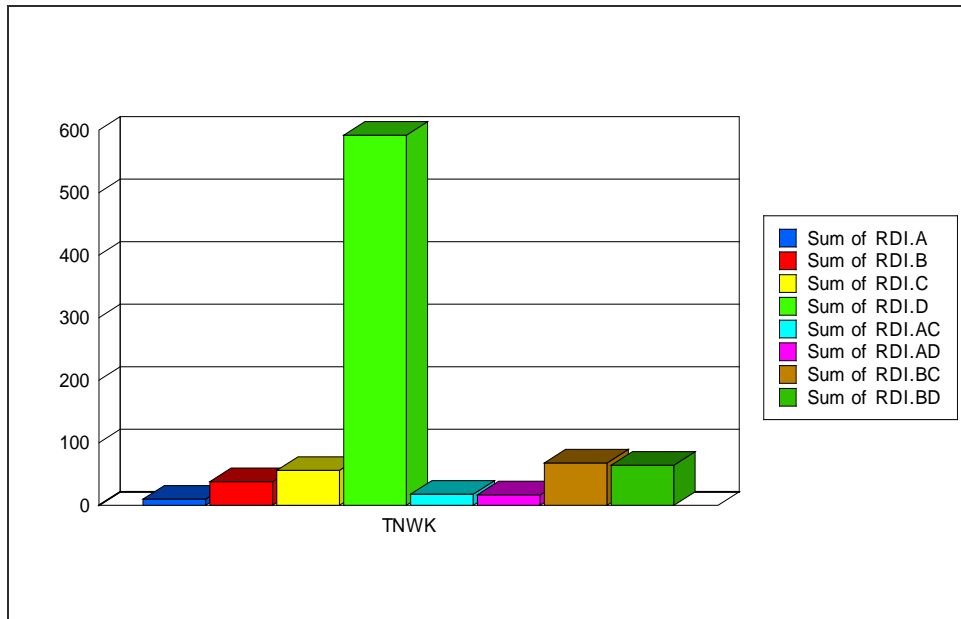
BASIC POPULATION PARAMETERS

Number of Footprints	Number of Locations with rhino signs					
	Footprints	Wallows	Feces	Feeding	Other Signs*	Direct Sighting
5	5	1	13	5	14	0

* Include Urine, Scratches, Rubs

During the 11 Patrols/Surveys in this period, 38 independent signs of rhino were encountered and no direct sighting.

RHINO DENSITY INDICATORS



Rhino		RPU Field Presence		Density Indicators			
A	B*	C	D	A/C	A/D	B/C	B/D
Number of print locations	Number of Rhino Signs*	Field Days**	Distance Walked***	Rhino prints/ 100 days	Rhino prints/ 1000 km	Rhino signs/ 100 days	Rhino signs/ 1000 km
10	38	56	592,00	17,86	16,89	67,86	64,19

(B*) The total number of sign (excluding footprints) of rhino found. ** Total number of RPU group field days during surveys only (excluding other activities). *** Total number of range in kilometer covered by RPU group during surveys activity.

ILLEGAL ACTIVITIES ENCOUNTERED

Gaharu * Theft	Encroachment	Timber Theft	Forest Product Theft	Illegal Hunting		
				Rhino / Trap	Non Rhino (Mammals)	Other
1	23	6	1	1	8	22

* Gaharu (a component for incense) theft is listed separately, because it is a major threat in any forest in Indonesia

In WK, during the surveys and patrols a total of 58 cases of illegal activity were detected. The major case encountered was old encroachment and then poaching of non mammals. **No trap for rhino** encountered.

Record of cases as per attached in **Annex - 2**, which including: date of incidence, date of detection, type of of offences, and place of occurrence, evidence (forest/wildlife produces recovered, Arms /other evidence), suspect, legal status and comments.

ENCOUNTERED ANIMALS

Patrol Area	√ = encountered					
	Rhino	Elephant	Tiger	Tapir	Other	Offences
1	2	3	4	5	6	7
Kramat manula, Simpang Lunik, Rata Agung TNBBS						
Rawa Kerek, Margahayu, Babakan Bambang						√
Susukan Baru, Bincung, Wako Atas	√					√
Gambas RI, Camp 5000, Central Wako, Gambas RI	√	√				√
Way Kanan, D1						
Posdal, Way Kanan, D1, Kuala Kambas						
gambas RI						√
Plang Hijau, Way Kanan						
Plang Hijau dan sekitarnya						
Braja Harjo Sari, Braja kencana						
Way Kanan, Camp C, Permata						√
Plang hijau, PLG, Kali batin						
Umbul ogan, areal PT NTF,						
Plang Hijau, Rawa Kerek, Rawa Bunder, Gambas RI						√
Plang hijau, PLG, Kali batin						
Pos Plang Hijau						
RPTN Bungur		√				
Gaya Baru, Raja Wali						
Tegal Yoso, Susukan Baru						
Gubug Umar, Darmaji, Rawa Kerek, PLG						√
Labuhan Ratu VI, Binjay						
Susukan Baru, Camp Dewi, Wako	√					√
RPTN Bungur						
SRS, Posdal						

Bungur, Gambas RI, Rawa Bunder, Plang Hijau	√					√
D2, Wako Benteng, Sentral Wako, Air Putih	√					√
Labuhan Ratu IX						
Posdal, SRS						
Rawa Bunder, Gambas RI						√
Deca Gaya Baru dan sekitarnya	√					√
Rantau Jaya Udik II						
Labuhan Ratu VI, Binjay						
Gubuk Umar, Later T PLG						√
Gaya Baru, Raja Wali						
PLG		√				
Way Kanan						
Susukan Baru, Wako Atas, Karaoke dan sekitarnya						
Bungur, Rasau, Cabang						√
Labuhan Ratu IX						
Braja Kencana, Braja Luhur						
SRS						
Rantau Jaya Udik II						
Braja Yekti						
Margahayu						
Tegal Yoso						
Toto Projo, Kec. Way Bungur						
Labuhan Ratu VI, Binjay						
Rawa Bunder, Rawa Kerek, Plang Hijau						
Labuhan Ratu VI, Binjay						
Gaya Baru, Raja Wali						
Tanjung Tirto, Toto Projo						
Braja Kencana, Karang anyar						
PLG						
Bungur, Gambas RI, Margahayu, Braja Yekti						
D2, Rawa Badak, Hulu Kali Biru, D2	√	√	√	√		
Plang Hijau dan sekitarnya						
Susukan Baru, Way Andi, Wako.						
Rawa Kerek, Margahayu						√
Gambas RI, Serayu, Andi, Karaoke, Tompul		√				√
Way Kanan, Kuala Kambas, Wako, Kuala Penet		√				√
Way Kanan, Kali Biru						
Rawa Bunder, Gambas RI		√				√
Rawa Bunder, Plang Hijau, Margahayu						
Labuhan Ratu VI, Margahayu						√
Labuhan Ratu VI, Umbul 8						
Rawa Bunder dan sekitarnya						
Labuhan Ratu VI, Binjay						
Susukan Baru, Gambas RI		√				√
PT NTF dan sekitarnya						

Gaya Baru, Rawa Betik, Rajawali						
Toto Projo, Kec. Way Bungur		√				
Cam C, Hulu Permata, Camp Mini		√		√		√
Plang Hijau dan sekitarnya						√
D2, Rawa Badak, Temon, Rawa Kerek		√	√	√		√
Plang hijau, PLG, Kali batin						√
Plang Hijau, Margahayu		√				
Tegal Yoso		√				
Plang Hijau, Margahayu						
gambas RI						√

DETAILS OF RHINO SIGN

Patrol Areas	Fottprint	Direct sighting	Wallow	Feeding	Faeces	Others
1	2	3	4	5	6	7
Susukan Baru, Bincung, Wako Atas	3	0	0	0	0	0
Gambas RI, Camp 5000, Central Wako, Gambas RI	0	0	0	0	2	5
Susukan Baru, Camp Dewi, Wako	0	0	0	0	1	0
D2, Wako Benteng, Sentral Wako, Rawa Badak, Air Putih	0	0	0	3	9	7
D2, Rawa Badak, Hulu Kali Biru, D2	2	0	1	2	1	1
Gambas RI, Serayu, Andi, Karaoke, Way Tulung Sula, Tompul	0	0	0	0	0	0
Way Kanan, Kuala Kambas, Wako, Kuala Penet	0	0	0	0	0	0
Rawa Bunder, Gambas RI	0	0	0	0	0	0
Cam C, Hulu Permata, Camp Mini	0	0	0	0	0	0
D2, Rawa Badak, Temon, Rawa Kerek	0	0	0	0	0	1
Plang hijau, PLG, Kali batin	0	0	0	0	0	0

PATROL DATA

Location	Activity	Start Date	End Date	Days	No of Person	Length (Km)	Remarks
1	2	3	4	5	6	7	8
Way Kanan, D1	Patrol	12 - Oct	14 - Oct	3	7	18,00	No illegal actviry
Braja Harjo Sari, Braja kencana	Patrol	18 - Oct	18 - Oct	1	4	3,50	No illegal actviry
Labuhan Ratu VI, Binjay	Patrol	28 - Oct	29 - Oct	2	7	9,80	No illegal actviry
Bungur, Gambas RI, Rawa Bunder, Plang Hijau	Patrol	28 - Oct	31 - Oct	4	6	11,00	Arrested suspects of illegal grazing and poaching
Labuhan Ratu IX	Patrol	30 - Oct	31 - Oct	2	5	0,00	Arrested 1 suspect of

							wildlife trader with evidence of 1 wildpig
Labuhan Ratu VI, Binjay	Patrol	7 - Nov	8 - Nov	2	7	8,60	No illegal activity
Braja Kencana, Braja Luhur	Socialization / Awareness	19 - Nov	20 - Nov	2	1	0,00	Well done
Margahayu	Socialization / Awareness	22 - Nov	24 - Nov	3	2	14,00	Well done
Braja Kencana, Karang anyar	Socialization / Awareness	23 - Nov	24 - Nov	2	2	0,00	Well done
Plang Hijau dan sekitarnya	Patrol	28 - Nov	29 - Nov	2	1	7,00	Information on illegal activity
Rawa Kerek, Margahayu	Patrol	4 - Dec	4 - Dec	1	4	3,00	Detected a snare
Labuhan Ratu VI, Umbul 8	Patrol	21 - Dec	21 - Dec	1	10	4,40	Information on illegal activity
PT NTF dan sekitarnya	Patrol	5 - Dec	5 - Dec	1	2	18,00	Information on illegal activity (poaching) in Rawa Bunder.
Plang Hijau dan sekitarnya	Patrol	15 - Dec	15 - Dec	1	4	16,00	Detected 3 trespassers.
D2, Rawa Badak, Temon, Rawa Kerek	Patrol/Survey	24 - Dec	29 - Dec	6	6	18,00	No rhino signs. No Illegal activity.
Susukan Baru, Bincung, Wako Atas	Patrol/Survey	6 - Oct	9 - Oct	4	8	80,00	Arrested suspect of illegal fishing. Detected rhino signs in this area which never found before for along time.
Posdal, Way Kanan, D1, Kuala Kambas	Guiding guest	12 - Oct	15 - Oct	4	4	49,50	Well done
Gubug Umar, Darmaji, Rawa Kerek, PLG	Patrol	25 - Oct	26 - Oct	2	2	29,00	Detected trespasser.
Posdal, SRS	Guiding guest	1 - Nov	2 - Nov	2	9	0,00	Well done
Gubuk Umar, Later T PLG	Patrol	7 - Nov	8 - Nov	2	2	50,00	Detected old trail of trespasser.
Bungur, Rasau, Cabang	Patrol	13 - Nov	17 - Nov	5	13	126,00	Detected signs of illegal activity.
Braja Yekti	Socialization / Awareness	22 - Nov	23 - Nov	2	2	40,00	Well done
Labuhan Ratu VI, Binjay	Socialization / Awareness	23 - Nov	24 - Nov	2	2	5,00	Well done
Tanjung Tirto, Toto Projo	Socialization / Awareness	22 - Nov	23 - Nov	2	2	0,00	Well done

Bungur, Gambas RI, Margahayu, Braja Yekti	Patrol	26 - Nov	30 - Nov	5	4	144,00	Detected old trail of trespassers.
Kramat manula, Simpang Lunik, Rata Agung TNBBS	Patrol	2 - Oct	8 - Oct	7	2	0,00	In BBS : Detected and ruined the cabins and plantation of encroachers.
Pos Plang Hijau	Patrol	10 - Oct	11 - Oct	2	2	0,00	No illegal activity.
RPTN Bungur	Penggiringan Gajah	10 - Oct	11 - Oct	2	1	0,00	Drove elephants back to the forest.
Tegal Yoso, Susukan Baru	Socialization	25 - Oct	25 - Oct	1	1	0,00	Well done
Susukan Baru, Camp Dewi, Wako	Patrol/Survey	22 - Oct	26 - Oct	5	7	92,80	No illegal activity
Rantau Jaya Udik II	Patrol	4 - Nov	6 - Nov	3	7	24,20	Detected a group of traditional poachers with 6 dogs, in adjacent to the Park area. No evidence.
PLG	Patrol	11 - Nov	11 - Nov	1	8	12,00	Detected no illegal activity, but active trail of trespassers.
Toto Projo, Kec. Way Bungur	Socialization / Awareness	19 - Nov	20 - Nov	2	1	0,00	Well done
Susukan Baru, Way Andi, Wako.	Patrol	27 - Nov	30 - Nov	4	7	78,60	No illegal activity.
Way Kanan, Kali Biru	Patrol	4 - Dec	4 - Dec	1	4	5,00	No illegal activity.
Rawa Bunder, Gambas RI	Patrol/Survey	7 - Dec	12 - Dec	6	8	18,90	Detected no illegal activity but able to detect signs of wildlife.
Labuhan Ratu VI, Margahayu	Patrol	16 - Dec	16 - Dec	1	5	8,20	No illegal activity. Detected active trail of trespasser.
Labuhan Ratu VI, Binjay	Patrol	18 - Dec	19 - Dec	2	7	0,00	Detected trespasser but no evidence.
Susukan Baru, Gambas RI	Patrol	24 - Dec	24 - Dec	1	3	4,00	Signs of plantation disturbance by elephant. No illegal activity.
Toto Projo, Kec. Way Bungur	Elephant conflict	22 - Dec	23 - Dec	2	4	0,00	Drove back elephants to the forest.
Plang hijau, PLG, Kali batin	Patrol/Survey	25 - Dec	28 - Dec	4	4	24,00	Detected signs of freshwater illegal fishing.
Gubuk Endi dan sekitarnya	Patrol	30 - Dec	31 - Dec	2	5	0,00	Detected 2 groups of trespassers with no evidence of illegal activity.

Rawa Kerek, Margahayu, Babakan Bambang	Patrol	5 - Oct	9 - Oct	5	8	101,00	Arrested a suspect of illegal fishing and ruined their equipments.
Gambas RI, Camp 5000, Central Wako, Gambas RI	Patrol/Survey	10 - Oct	13 - Oct	4	9	50,30	Arrested a suspect of illegal fishing. Detected signs of rhino and elephant.
gambas RI	Patrol	14 - Oct	14 - Oct	1	9	9,00	Detected of suspect of illegal grazing and firewood collection.
Plang Hijau, Way Kanan	Guiding guests	15 - Oct	15 - Oct	1	5	0,00	Direct sighting of 2 deers and 1 owl.
Plang Hijau, Rawa Kerek, Rawa Bunder, Gambas RI	Patrol	22 - Oct	22 - Oct	1	8	25,50	Arrested 6 suspect of illegal fising and 3 motorcycles.
Plang hijau, PLG, Kali batin	Patrol	8 - Oct	9 - Oct	2	2	46,00	No illegal activity
Gaya Baru, Raja Wali	Socialization / awareness	22 - Oct	24 - Oct	3	2	0,00	No illegal activity
RPTN Bungur	Socialization / awareness	18 - Oct	19 - Oct	2	2	0,00	Well done
Deca Gaya Baru dan sekitarnya	Socialization / awareness	4 - Nov	6 - Nov	3	2	0,00	Well done
Gaya Baru, Raja Wali	Patrol	8 - Nov	8 - Nov	1	2	0,00	Detected information on illegal activity.
Way Kanan	Awareness	12 - Nov	12 - Nov	1	2	0,00	Well done
Labuhan Ratu VI, Binjay	Patrol	21 - Nov	21 - Nov	1	5	0,00	No illegal activity
Gaya Baru, Raja Wali	Socialization / awareness	19 - Nov	20 - Nov	2	2	0,00	Well done
PLG	Socialization / awareness	24 - Nov	26 - Nov	3	3	0,00	Well done
Way Kanan, Kuala Kambas, Wako, Kuala Penet	Patrol/Survey	8 - Dec	12 - Dec	5	8	91,00	Detected of trespasser. Detected signs of elephant.
Gaya Baru, Rawa Betik, Rajawali, Seputih Surabaya	Socialization / awareness	15 - Dec	18 - Dec	4	2	0,00	Well done
Plang Hijau, Margahayu	Patrol	19 - Dec	20 - Dec	2	4	20,00	Drove elephant back to the forest.
Tegal Yoso	Patrol	21 - Dec	22 - Dec	2	4	6,00	Drove elephant back to the forest.
Rawa Kerek, Jambuan NTF	Patrol	23 - Dec	23 - Dec	1	4	2,00	Detected trail of trespasser.
Plang Hijau dan sekitarnya	Patrol	16 - Oct	16 - Oct	1	1	0,00	No illegal activity.

Way Kanan, Camp C, Permata	Patrol	19 - Oct	19 - Oct	1	3	27,50	No illegal activity. Detected of poisoning river Neg Batin.
Plang hijau, PLG, Kali batin	Patrol	19 - Oct	19 - Oct	1	7	32,80	No illegal activity. Detected signs of tiger.
Umbul ogan, areal PT NTF,	Patrol	20 - Oct	21 - Oct	2	12	5,80	No illegal activity.
SRS, Posdal	Meeting	23 - Oct	24 - Oct	2	2	0,00	Evaluation on habitat. Propose training to Ujung Kulon.
D2, Wako Benteng, Sentral Wako, Rawa Badak, Air Putih	Patrol/Survey	27 - Oct	1 - Nov	6	7	117,00	No poaching activity. Detected illegal fishing. Detected rhino signs.
Rawa Bunder, Gambas RI	Patrol	4 - Nov	5 - Nov	2	7	47,50	No illegal activity. Detected new active trail of trespasser.
Susukan Baru, Wako Atas, Karaoke dan sekitarnya	Patrol	13 - Nov	18 - Nov	6	6	128,00	Detected of illegal activity.
Labuhan Ratu IX	Socialization / awareness	19 - Nov	20 - Nov	2	1	0,00	Well done
SRS	Socialization	20 - Nov	20 - Nov	1	11	0,00	JAMSOSTEK
Rantau Jaya Udik II	Socialization / awareness	22 - Nov	23 - Nov	2	2	36,20	Well done
Tegal Yoso	Socialization / awareness	22 - Nov	23 - Nov	2	2	33,40	Well done
Rawa Bunder, Rawa Kerek, Plang Hijau	Patrol	4 - Nov	5 - Nov	2	2	16,00	No illegal activity.
D2, Rawa Badak, Hulu Kali Biru, D2	Patrol/Survey	27 - Nov	1 - Dec	5	7	28,00	Signs of rhino, elephant, tiger, bear and tapir.
Gambas RI, Serayu, Andi, Karaoke, Way Tulung Sula, Tompul	Patrol/Survey	7 - Dec	12 - Dec	6	4	48,50	Detected old trail of trespasser. Direct sighting of a group of elephant (10).
Rawa Bunder, Plang Hijau, Margahayu dan sekitarnya	Patrol	14 - Dec	17 - Dec	4	4	58,50	Detected old trail of trespasser
Rawa Bunder dan sekitarnya	Patrol	22 - Dec	22 - Dec	1	4	21,50	No illegal activity
Cam C, Hulu Permata, Camp Mini	Patrol/Survey	23 - Dec	27 - Dec	5	5	23,50	Detected of gaharu theft. Signs of elephant.

GENERAL PERFORMANCE PARAMETERS

Number of general activities	79
Number of Patrol and Surveys	11
Distance Walked (Kilometers)	1.897,5
Distance Walked for Patrol and Survey	592,0
Number of Field Days	204
Number of Field Days for Patrol and Survey	56
Field Days per-person per-month	16,98

A total of 79 activities were conducted during this quarter (October - December) of the year and among of them were 11 activities of patrol/surveys, which covering 592,0 km and field-days 16.98 days per person per month.

PROGRAM PERSONNEL

(Summary of Field Days Per-Person Per-Month 1 OCT - 31 DEC 2011)

Name of Personnel	Number of Field Days	Average Field Days/Month
Agus Riadi	33	11,00
Amrodi	52	17,33
Aris Hendriyanto	64	21,33
Balyan Irawadi	44	14,67
Bambang Meiyono	57	19,00
Bonari	63	21,00
Boston Kaloko	51	17,00
Daryono	48	16,00
Encang Sutarma	54	18,00
Ferry Agus Bangun	49	16,33
Joko Iswanto	50	16,67
Muslimin	55	18,33
Nur Basuki	55	18,33
Nurhadi	47	15,67
Sugondo	53	17,67
Suhadi	31	10,33
Sujoko	56	18,67
Supriyono	44	14,67
Totok Riyadi	54	18,00
Yusuwardi	59	19,67

Other personnels :

1.	Hartato	Field Coordinator
2.	Rosdi Hartono	Adinistrative and Finance Officer
3.	Suyana	Driver
4.	Yahmin	Boat driver
5.	Suparmi	Cook
6	Dede Rahmat	Office boy

RPU-UK UJUNG KULON NATIONAL PARK

Millstones:

1. Detected rhino signs in JRSCA area.
2. Illegal activity lower than previous Quarter, in the same time with the time of most villagers to work in sawah (paddy field) in the raining season.
3. Developed a corridor to monitor rhino movement in Peninsula.
4. Detected 7 suspects of bird trapping (1 in JRSCA area).
5. Detected 4 snares for mouse deer in JRSCA area.
6. Detected 3 suspects of encroachment in JRSCA area.

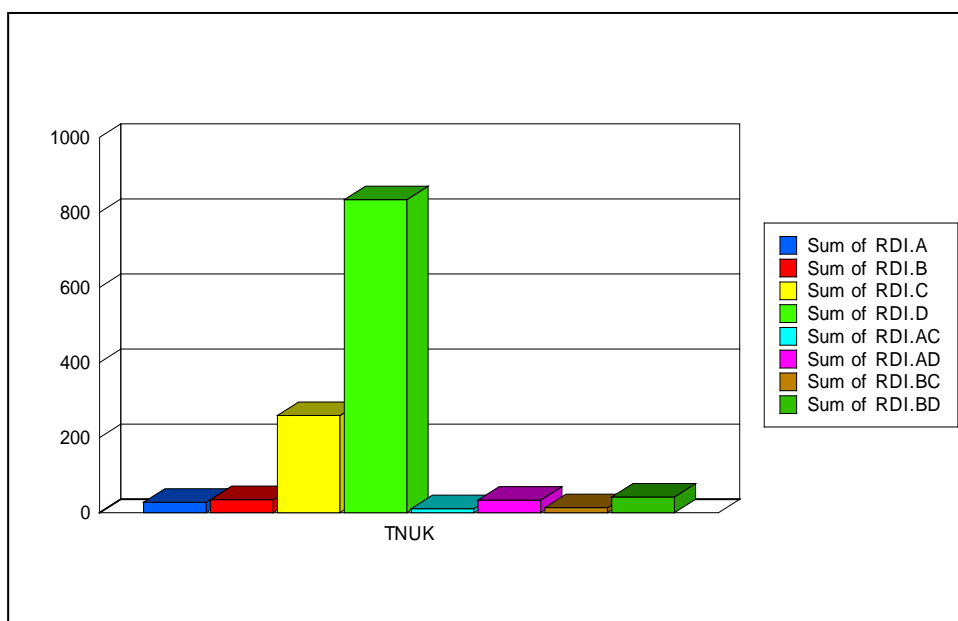
BASIC POPULATION PARAMETERS

Number of Footprints	Number of Locations with rhino signs					
	Footprints	Wallows	Feces	Feeding	Other Signs*	Direct Sighting
28	56	5	10	17	3	0

* Include Urine, Scratches, Rub

During the 12 Patrols/Surveys in this period, 91 independent signs of rhino were encountered, no direct sighting.

RHINO DENSITY INDICATORS



Rhino		RPU Field Presence		Density Indicators			
A	B*	C	D	A/C	A/D	B/C	B/D
Number of print locations	Number of Rhino Signs*	Field Days**	Distance Walked** *	Rhino prints/ 100 days	Rhino prints/ 1000 km	Rhino signs/ 100 days	Rhino signs/ 1000 km
28	35	259	834,00	10,81	33,57	13,51	41,97

(B*) The total number of sign (excluding footprints) of rhino found. ** Total number of RPU group field days during surveys only (excluding other activities). *** Total number of range in kilometer covered by RPU group during surveys activity.

ILLEGAL ACTIVITIES ENCOUNTERED

Encroachment	Timber Theft	Forest Product Theft	Illegal Hunting		
			Rhino / Trap	Non Rhino (Mammals)	Other
7	0	0	0	0	19

In UK, during the surveys and patrols a total of 26 cases of illegal activity were detected. The most cases encountered were poaching/ trapping non big mammals as birds, fish. **No trap for rhino** encountered.

Record of cases as per attached in **Annex - 2**, which including: date of incidence, date of detection, type of offences, place of occurrence, evidence (forest/wildlife produces recovered).

ENCOUNTERED ANIMALS

Patrol Area	√ = encountered			
	Rhino	Banteng (wild cattle)	Other Mammal	Offences
Tamanjaya,Lg Pakis,Soge,Gendir,Cikalejetan leutik,Rorah gede,Karang ranjang,Bandawoh,Cikeusik timur	√	√	√	√
Tamanjaya,Lg pakis,Cilintang,Karang ranjang, Pangukusan,Tj Pertamina,Pangapakan,Banda woh,Kp Sempur	√	√	√	√
Tamanjaya,Cidaon,Cibunar,Cit adahan,Citerjun	√	√	√	√
Tamanjaya,Lg pakis,Ermokla,Cegog,Ciguha,Cilintang,Cikokosan,Cihujan	√		√	√
Tamanjaya, Karang Ranjang, Pangukusan, Bandawoh, Laban, Cisimping, Cilintang	√			
Legon pakis, Cilintang, Handeuleum, Cikabembem, Citelang, Cangkok, Cikarang, Balagadigi, Pamageran, Citengah, Gendir	√			√
Tamanjaya, Legon pakis, Cikanyere, Gendir, Cilintang	√			√

Patrol Area	√ = encountered			
	Rhino	Banteng (wild cattle)	Other Mammal	Offences
Tamanjaya, Handeuleum, Cigenter, Legon pakis, Cikalejetan, Cilintang, Solokan Duyung, Cikanyere, Cihujan, Gendir, Ciperepet	√			√
Tamanjaya, Cihandeuleum, Cika bembem, Cikeyep, Cigenter, Balagadigi, Pamageran, Cikarang, Citelang, Legon Pakis	√	√	√	
Tamanjaya, Cihandeuleum, Cika bembem, Cikeyep, Cigenter, Balagadigi, Pamageran, Cikarang, Citelang, Legon Pakis	√	√	√	
Tamanjaya, Balagadigi, Pamageran, Cikabembem, Cihandeuleum, Cikarang, Cigenter, Citelang, Cangkok, Legon Pakis		√	√	
Tamanjaya, Legon pakis, Kalejetan, Ranca gebang, Ermokla, Cibangkonol, Gendir	√		√	√

DETAILS OF RHINO SIGN

Nama Daerah / Patrol Areas	Tapak	Kubangan	Pakan	Kotoran	Lain-Lain	Tatap Muka
Tamanjaya, Lg Pakis, Soge, Gendir, Cikalejetan leutik, Rorah gede, Karang ranjang, Bandawoh, Cikeusik timur	3	0	0	0	0	0
Tamanjaya, Lg pakis, Cilintang, Karang ranjang, Pangukusan, Tj Pertamina, Pangapakan, Bandawoh, Kp Sempur	3	0	0	0	0	0
Tamanjaya, Cidaon, Cibunar, Citadahan, Citerjun	1	0	0	0	0	0
Tamanjaya, Lg pakis, Ermokla, Cegog, Ciguha, Cilintang, Cikokosan, Cihujan	5	0	0	0	2	1
Tamanjaya, Karang Ranjang, Pangukusan, Bandawoh, Laban, Cisimping, Cilintang	2	0	0	0	0	0

Legon pakis, Cilintang, Handeuleum, Cikabembem, Citelang, Cangkok, Cikarang, Balagadigi, Pamageran, Citengah, Gendir	2	0	0	1	0	0
Tamanjaya, Legon pakis, Cikanyere, Gendir, Cilintang	1	0	0	3	2	0
Tamanjaya, Handeuleum, Cigenter, Legon pakis, Cikalejetan, Cilintang, Solokan Duyung, Cikanyere, Cihujan, Gendir, Ciperepet	4	0	1	5	3	0
Tamanjaya, Cihandeuleum, Cikabembeum, Cikeyep, Cigenter, Balagadigi, Pamageran, Cikarang, Citelang, Legon Pakis	0	0	2	0	0	0
Tamanjaya, Cihandeuleum, Cikabembeum, Cikeyep, Cigenter, Balagadigi, Pamageran, Cikarang, Citelang, Legon Pakis	0	0	2	0	0	0
Tamanjaya, Balagadigi, Pamageran, Cikabembeum, Cihandeuleum, Cikarang, Cigenter, Citelang, Cangkok, Legon Pakis	0	0	0	0	0	0
Tamanjaya, Legon pakis, Kalejetan, Ranca gebang, Ermokla, Cibangk onol, Gendir	6	0	0	6	2	2

PATROL DATA

Location	Activity	Start Date	End Date	Days	No. of Person	Length (Km)	Remarks
Tamanjaya,Lg Pakis,Soge,Gendir,Cika lejetan leutik,Rorah gede,Karang ranjang,Bandawoh,Cike usik timur	Patrol/Survey	5 - Oct	25 - Oct	21	4	85,42	Signs of rhino (foot-print and wallow). Detected of illegal activity.
Tamanjaya, Karang Ranjang, Pangukusan, Bandawoh, Laban, Cisimping, Cilintang	Patrol/Survey	5 - Nov	25 - Nov	21	4	66,78	Rhino signs as : foot-print, feeding, wallow. No illegal activity. Develop corridor to monitor rhino.
Tamanjaya,Cihandeuleum,Cikabembeum,Cike yep,Cigenter,Balagadigi,Pamageran,Cikarang, Citelang,Legon Pakis	Patrol/Survey	5 - Dec	25 - Dec	21	4	93,32	Detected wallow. No illegal activity.
Tamanjaya,Lg pakis,Cilintang,Karang ranjang, Pangukusan,Tj Pertamina,Pangapakan, Bandawoh,Kp Sempur	Patrol/Survey	5 - Oct	28 - Oct	24	4	69,52	Detected rhino signs : foot-print, feeding, urine. Detected illegal activity.
Legon pakis, Cilintang, Handeuleum, Cikabembem, Citelang, Cangkok, Cikarang, Balagadigi, Pamageran, Citengah, Gendir	Patrol/Survey	3 - Nov	25 - Nov	23	4	87,38	Rhino signs (foot-print, feeding).
Tamanjaya,Cihandeuleum,Cikabembeum,Cike yep,Cigenter,Balagadigi,Pamageran,Cikarang, Citelang,Legon Pakis	Patrol/Survey	5 - Dec	25 - Dec	21	4	93,32	No illegal activity. A time / season to work in their sawah.
Tamanjaya,Cidaon,Cibunar,Citadahan,Citerjun	Patrol/Survey	5 - Oct	25 - Oct	21	4	30,50	Detected foot-print, feeding, dung. Detected illegal activity.

Tamanjaya, Legon pakis, Cikanyere, Gendir, Cilintang	Patrol/Survey	5 - Nov	25 - Nov	21	4	14,45	Detected foot-print, feeding, dung. Detected illegal activity.
Tamanjaya, Balagadigi, Pamageran, Cikabembem, Cihandeuleum, Cikarang, Cigenter, Citelang, Cangkok, Legon Pakis	Patrol/Survey	5 - Dec	25 - Dec	21	4	91,41	No illegal activity. A time / season to work in their sawah.
Tamanjaya, Lg pakis, Ermokla, Cegog, Ciguha, Cilintang, Cikokosan, Cihujan	Patrol/Survey	5 - Oct	25 - Oct	21	4	78,60	Detected rhino signs : feeding, foot-print, wallow, dung. Detected illegal activity.
Tamanjaya, Handeuleum, Cigenter, Legon pakis, Cikalejetan, Cilintang, Solokan Duyung, Cikanyere, Cihujan, Gendir, Ciperepet	Patrol/Survey	3 - Nov	25 - Nov	23	4	90,87	Detected rhino signs : feeding, foot-print, wallow, dung, urine, etc
Tamanjaya, Legon pakis, Kalejetan, Ranca Gebang, Ermokla, Cibangkonol, Gendir	Patrol/Survey	5 - Dec	25 - Dec	21	4	33,17	Detected rhino signs : feeding, foot-print, wallow, dung, urine, etc No illegal activity.

GENERAL PERFORMANCE PARAMETERS

Number of general activities	12
Number of Patrol and Surveys	12
Distance Walked (Kilometers)	834,76
Distance Walked for Patrol and Survey	834,76
Number of Field Days	259
Number of Field Days for Patrol and Survey	259
Field Days per-person per-month	21,33

A total of 12 activities were patrols/surveys which have conducted during this quarter (October-December), covering 834.76 km and field-days of 21.33 days per person per month.

PROGRAM PERSONNEL

(Summary of Field Days Per-Person Per-Month 1 Oct – 31 Dec 2011)

Name of Personnel	Number of Field Days	Average Field Days/Month
Acep Supriatna	63	21,00 (3 Month)
Andri Duriat	65	21,67 (3 Months)
Diding	68	22,67 (3 Months)
Edi	68	22,67 (3 Months)
Endin	68	22,67 (3 Months)
Hadimi	63	21,00 (3 Months)
Haerudin	65	21,67 (3 Months)
Iin Ruslani	63	21,00 (3 Months)
Jajat Sudrajat	68	22,67 (3 Months)
Mulyani	63	21,00 (3 Months)
Sorhim	63	21,00 (3 Months)
Sunardi	65	21,67 (3 Months)
Tisno	65	21,67 (3 Months)
Ujang Sukri	63	21,00 (3 Months)
Yadi Suryana	63	21,00 (3 Months)
Yusep Herdiana	65	21,67 (3 Months)

Other personnels :

1.	Otong Sontani	Field Coordinator
2.	Agus Darmawan	Ass. FC for Administration and Finance
3.	M. Syamsudin	Ass FC for Database and technical report
4.	Samaun	Boat driver
5.	Elly	Ass. Boat driver /crew
6.	Odah	Cook
7.	Syaiful	Office boy

YAYASAN BADAQ INDONESIA - YABI **Rhino Foundation of Indonesia - RFI**

ANNEX- 2:

QUARTERLY ACTIVITY AND PERFORMANCE REPORT

1 OCTOBER - 31 DECEMBER 2011

(Q4)

**ANNEX-2: OFFENSES OR ILLEGAL ACTIVITIES ENCOUNTERED DURING Q4 2011
(October - December 2011)**

1. OFFENSES IN BUKIT BARISAN SELATAN NP

No.	Date	Remarks <ul style="list-style-type: none"> • Type of offense • Forest / WL produce recovered • Arm/Ammunition recovered • People arrested 	Age	Location	Action Taken Legal status/comments
1.	8 - Jan	Illegal logging with evidence 7 pcs timber (Meranti) , no suspect	< 1 year	Talang enam	Documented and recorded
2.	12 - Jan	1 Old camp for bird trapping	< 1 Month	Hulu way mahnai	Documented and destroyed
3.	13 - Jan	Sign of trespassing; 1 camp	< 6 Months	Hulu way rilau	Documented and destroyed
4.	14 - Jan	1 Camp for bird trapping,	< 6 Months	Hulu way rilau	Documented and destroyed
5.	15 - Jan	1 Camp bird trapping	< 6 Months	Hulu way rilau	Documented and destroyed
6.	15 - Jan	1 Old camp bird trapping	< 1 year	Krengseng, way rilau	Documented and destroyed
7.	25 - Jan	1 Camp for bird trapping	< 6 Months	Hulu way tenumbang	Inactivated
8.	27 - Jan	Feathers (bird part) of Kua (<i>Argusianus argus</i>)	< 1 day	km.24	Recorded
9.	29 - Jan	1 Camp for bird trapping (> 5 weeks)	< 1 year	Hulu way mahnai balak	Documented
10.	9 - Feb	Encroachment / opened forest	> 1 year	Bambu kuning	Documented
11.	10 - Feb	1 unit motorcycle evidence. No suspect	< 4 days	Km.32	Documented
12.	13 - Feb	Sign of bird trapping	< 6 Months		recorded
13.	15 - Feb	Illegal Logging; arrested suspects Mr. Sarmin bin Saeran and Mr. Sunarto bin Mahriah, Evidences : 1 unit chain saw, 2 pcs golok and 1 tool bag for chain saw	< 4 days	Talang bamban	Documented for judicial process
14.	15 - Feb	Arrested suspect of bird trapping, Mr. Hartoso, Agus and Radit , from pekon sidomulyo kec.semaka	< 4 days	Hulu way bamban	Documented for judicial process
15.	8 - Mar	1 camp for bird trapping	< 6 Month		Recorded and destroyed
16.	14 - Mar	1 old Camp	< 1 year	Hulu way mengengung	destroyed
17.	14 - Mar	Bird trapping. Traditional equipment.	< 6 Months	Hulu sindalapay, serdang	Documented
18.	14 - Mar	Signs of gaharu theft	< 1 year	hulu way mengengung serdang	Documented
19.	14 - Mar	2 camps of encroachment	< 1 year	Serdang, way mengaku	Documented
20.	15 - Mar	Encroachment		way mengengung, kubu perahu	Documented

21.	16 - Mar	Signs of bird trapping	< 1 week	Peg. liu	Documented
22.	21 - Mar	Arrested 2 suspects (Mr. Suryanto and Mr. Rustam) and its evidences (1 long knife; 1 hand saw; 1 axe) of illegal logging	< 1 day	Talang simpang, Tirom	Documented for judicial process
23.	28 - Mar	Sign of bird trapping	< 6 Months	Pematang kapur, Km.30	Documented
24.	29 - Mar	Signs of bird trapping (singing bird)	< 1 day	Tugu rafflesia, kuyung arang	Documented
25.	15 - Apr	Detected an old camp for fishing	< 1 yr	Bamban km.30	Documented
26.	27 - Apr	Old bone of 2 elephant		Anak way ngaras	Documented
27.	28 - Apr	Detected 1 snare	< 1 yr	Krengseng	inactivated
28.	28 - Apr	1 old camp of bird trapping	< 1 week	Anak way ngaras	Documented
29.	28 - Apr	An old camp of bird trapping	< 1 month	Anak way ngaras	Documented
30.	11 - Mei	Old encroachment about 2 ha		Trangging atas	Documented
31.	15 - Mei	Non timber forest product (damar) > 70 kg	< 4 daysi	Way bamban	Destroyed
32.	15 - Mei	Plantation		Way ngambur	Documented
33.	15 - Mei	Abandoned encroachment 1.5 ha.		Way ngambur	Documented
34.	22 - Mei	Encroachment : 31 families; > 75 ha		Umbl.kekuok, Gedau, Pss.utara	Recorded and reported
35.	22 - Mei	Encroachment : 37 families, >75 ha		Umbl.melebui, Gedau, Pss.utara	Recorded and reported
36.	23 - Mei	Encroachment : 58 families > 76 ha		Umbl.lioh, Gedau, Pss.utara	Recorded and reported
37.	24 - Mei	Coffee plantation > 3 ha,		Way ngambur	Recorded and reported
38.	24 - Mei	Coffee plantation > 1 ha		Way ngambur	Recorded and reported
39.	27 - Mei	Coffee plantation > 3 ha,		Way telemak	Recorded and reported
40.	27 - Mei	Coffee plantation > 8 ha,		Mendati	Recorded and reported
41.	31 - Mei	Detected bird trapping	< 1 yr	Hulu selapan, Hulu anak way ngaras	Documented
42.	24 - Jun	Detected camp of bird trapping fishing	< 6 Months	Way tenumbang	Documented
43.	24 - Jun	Detected a camp of fishing	< 1 month	Way tenumbang	Documented
44.	24 - Jun	Detected camp of bird trapping fishing	< 6 months	Way tenumbang	Documented
45.	13 - Jul	Detected camp of bird trapping	< 1 week	Way bamban tengah	Documented
46.	22 - Jul	Detected old elephant poaching	> 1 year	Way ngambur	Recorded and Documented
47.	28 - Jul	Detected signs of bird trapping	< 1 week	Bukit penetoh - suoh	Documented
48.	30 - Jul	1 snare for deer	< 1 month	way pemerihan	Inactivated
49.	11 - Aug	Detected 1 skul of deer.		Anak way mahnay lunik, negri ratu	Documented
50.	11 - Aug	Old camp for gaharu theft	< 1 day	Hulu way biha	Documented
51.	14 - Aug	camp for gaharu theft	< 1 month	Hulu way manhay lunik	Documented
52.	15 - Aug	Old encroachment : coffee	< 1 day	Mahnay tengah - pahmongan	Documented
53.	10 - Sep	Evidence of sawn timbers.	< 4 day	Sugiwaras	confiscated
54.	4 - Oct	5 signs of fallen trees	< 6 months	Penengahan	Documented
55.	12 - Oct	Signs of trespassers using 3 motorcycles.	< 1 months	Hulu pemerihan, Km 26	Documented
56.	15 - Oct	Detected 1 active snare	< 1 months	Kuyung ngarang	Inactivated

57.	17 - Oct	Detected 5 active snares.	< 1 months	Kuyung ngarang	Inactivated
58.	18 - Oct	Detected signs 4 old snare for deer.	< 6 months	Hulu pemerihan	Documented
59.	11 - Nov	Detected 100 ha encroachment.	< 1 years	Sugi waras	Cacao and and <i>padi gogo</i> (rice of dry land)
60.	12 - Nov	Detected old signs of bird trapping	< 1 weeks	GR 557.506	Documented
61.	13 - Nov	Detected 7 active snares for napu (small mammals).	< 1 years	Hulu way paya	Inactivated
62.	16 - Nov	Detected 1 active snare for tiger.	< 6 months	GR 618.518	Inactivated
63.	17 - Nov	Detected 15 ha of old encroachment.	> 4 yrs	Sugiwaras	Cacao plantation Documented
64.	27 - Nov	Detected 8 ha of old encroachment.		Siring balak	Coffee plantation. Documented
65.	29 - Nov	I old camp of bird trapping	< 6 months	Sugiwaras,	Ruined
66.	21 - Dec	Detected of 2 fallen trees of Gaharu.	< 1 year	Way mahnay balak	Documented
67.	26 - Dec	Detected 1 old cabin of gaharu theft.	< 1 year	Hulu way tenumbang	Documented

2. OFFENSES IN WAY KAMBAS NP

No.	Date	Remarks <ul style="list-style-type: none"> Type of offense Forest / WL produce recovered Arm / Amunition recovered People arrested 	Age	Location	Action Taken Legal status/ comments
1.	3 - Jan	Poaching; 2 snares for deer.	< 1 Month	Way Anda	inactivated
2.	6 - Jan	Fishing ; 12 suspects. 2 boats	< 4 days	Kali Biru RPTN Way Kanan	Documented and stopped the activity
3.	16 - Jan	Fishing; 6 suspects; 1 boat	< 4 days	Kali Biru RPTN Way Kanan	Documented and stopped the activity
4.	20 - Jan	Bird poaching; air-rifle	< 4 days	RPTN Rawa Bunder	Documented
5.	26 - Jan	Bird trapping; 1 old camp	< 1 year	Sekapok RPTN Kuala Kambas	documented
6.	4 - Feb	Sign of trespassing	< 1 year	RPTN Susukan Baru	documented
7.	4 - Feb	Sign of trespassing	< 1 year	RPTN Rawa Bunder	documented
8.	5 - Feb	Sign of trespassing	< 1 year	RPTN Susukan Baru	documented
9.	5 - Feb	Sign of trespassing	< 1 day	RPTN Susukan Baru	documented
10.	6 - Feb	Illegal grazing.; 13 suspects;	< 1 day	RPTN Kuala Penet	documented
11.	8 - 10 Feb	Poaching; 29 snares for deer and wild boar.	< 4 days	Along the border of RPTN Plang Hijau	Recorded and inactivated
12.	15 - Feb	Sign of trespassing ; 1 bridge	< 1 year	RPTN Plang Hijau	Destroyed
13.	15 - Feb	Sign of trespassing ; 1 bridge	< 1 Month	RPTN RawaBunder	Recorded
14.	15 - Feb	Poaching; snares for deer and wild boar.	< 6 Months	RPTN Rawa Bunder	Recorded and inactivated
15.	16 - Feb	Fishing; 4 suspects; 3 motor cycle; evidence 0.5 kg freshwater fish.	< 4 days	RPTN Rawa Bunder	Recorded and stopped the activity
16.	18 - Feb	Signs of fire; about 10 ha	< 6 Months	RPTN Rawa	documented

				Bunder	
17.	21 - Feb	Signs of fire ; about 5 ha	< 1 Month	RPTN Susukan Baru	Recorded and documented
18.	23 - Feb	Signs of poaching;	< 1 weeks	RPTN Susukan Baru	Recorded and to be surveillanced
19.	23 - Feb	Sign of fire of about 7 - 10 ha, for poaching	< 1 week	RPTN Susukan Baru	Recorded and documented
20.	3 - Mar	Signs of poaching.	< 4 days	Gambas RI	Recorded and to be surveillanced
21.	7 - Mar	Poaching; 4 suspects; with 3 dogs; 4 deers;	< 4 days	Gambas RI	Unsuccessfully to arrest
22.	24 - Mar	Sign of fire of about 25 Ha	< 6 Months	Jalur Babakan Bambang	Recorded and documented
23.	24 - Mar	Sign of illegal logging; 1 cutted tree of 20 cm diameter;	< 1 Month	Tegal Yoso	documented
24.	24 - Mar	Signs of trespassing.	< 4 days	Sido dadi, Kuala Penet	Recorded and to be surveillanced
25.	24 - Mar	Signs of trespassing	< 4 days	Karang sari PLG	Recorded
26.	24 - Mar	Signs of trespassing	< 1 Month	Babakan Bambang	Recorded
27.	25 - Mar	Signs of trespassing	< 1 week	Jalur jengkolan RPTN Susukan Baru	Recorded
28.	25 - Mar	Signs of trespassing	< 1 Month	Jalur Rawa Mento RPTN Susukan Baru	Recorded
29.	25 - Mar	Signs of trespassing	< 1 day	Jalur miskam RPTN Susukan Baru	Recorded
30.	26 - Mar	Arrested 1 suspect of illegal non forest wood collection (200 water lichens);	< 4 days	Jalur Permata SPTN Kuala Penet	Submitted for judicial process
31.	27 - Mar	Sign of fire of about 300 ha ; possibly for poaching.	< 1 week	Susukan Baru	Recorded and documented
32.	28 - Mar	Arrested 1 suspect of illegal logging; 1 chainsaw; knives; 65 pcs sawn timber.	< 4 day	Way Nibung RPTN Umbul Salam	Recorded and to be surveillanced
33.	8 - Apr	Detected old camp of bird trapping burung .	< 1 month	Way Kanan	Recorded and documented
34.	8 - Apr	After fire area	< 1 weeks	Gambas RI	Recorded and documented
35.	9 - Apr	Detected Gaharu tree stealing	< 6 months	RPTN Way Kanan	Recorded and documented
36.	19 - Apr	Detected a bridge of trespasser	< 6 months	Kolam darmaji, Rawa Bunder	Destroyed
37.	20 - Apr	Detected a bridge of trespasser	< 1 yr	Rawa Bunder	Destroyed
38.	20 - Apr	Detected an active snare for deer and wildboar	< 1 month	Rawa Bunder	Inactivated
39.	20 - Apr	Detected illegal activities	< 1 week	Gambas RI	documented
40.	26 - Apr	Detected illegal fishing	< 1 month	Plang Hijau	documented
41.	28 - Apr	suspects of illegal fishing .	< 4 days	Proyek pancasila RPTN Plang Hijau	documented
42.	9 - Mei	After fire area of about 10ha	< 1 month	RPTN Umbul salam	documented
43.	9 - Mei	Detected track of the illegal activity	< 1 month	Barat Ujung RPTN Umbul salam	documented
44.	9 - Mei	Identified a trail of trespassers	< 1 month	Jalur Rasau	documented
45.	9 - Mei	an old after fire area of 1 ha	< 6 month	Rasau	documented
46.	9 - Mei	Forest fire area of about 1ha	< 6 month	Rasau	documented
47.	10 - Mei	A snare for tiger	< 1 month	RPTN	Inactivated

				Penanggungan	
48.	10 - Mei	Signs of trespasser	< 4 days	RPTN Penanggungan	documented
49.	10 - Mei	After fire area of 10 - 15 ha	< 6 months	RPTN Penanggungan	documented
50.	10 - Mei	A snare for tiger	< 1 month	RPTN Penanggungan	Inactivated
51.	10 - Mei	After fire area of 20-25ha	< 6 months	Rptn Penanggungan	documented
52.	10 - Mei	After fire area of 10 ha	< 1 month	Wako	documented
53.	10 - Mei	A camp of trespasser	< 1 month	Jalur Dewi RPTN Penanggungan	documented
54.	10 - Mei	After fire area of 20-30 ha	< 1 week	RPTN Penanggungan	documented
55.	11 - Mei	After fire area of 3x4meter	< 6 months	Penanggungan	documented
56.	12 - Mei	A snare for tiger	< 1 month	RPTN Penanggungan	Inactivated
57.	12 - Mei	An old snare for big mammals	< 1 yr	RPTN Penanggungan	documented
58.	12 - Mei	After fire area of 10-20ha	< 1 month	RPTN Penanggungan	documented
59.	12 - Mei	After fire area of 25ha	< 1 month	RPTN Wako	documented
60.	12 - Mei	Track of buffalo to Wako direction	< 1 month	RPTN Wako	Documented
61.	12 - Mei	An old camp of illegal fishing	< 1 yr	Wako	Ruined
62.	12 - Mei	An old camp of bird trapping	< 1 week	RPTN Penanggungan	Documented
63.	13 - Mei	An old camp of bird trapping	< 1 week	Wako	Documented
64.	23 - Mei	After fire area of 4 ha	< 4 days	Susukan Baru	Documented
65.	23 - Mei	After fire area of 20ha	< 1 month	Susukan baru	Documented
66.	23 - Mei	2 suspects of illegal grazing	< 4 days	Susukan Baru	Documented
67.	27 - Mei	Track of trespasser	< 1 month	Penanggungan	Documented
68.	27 - Mei	After fire area of 4 ha	< 1 week	Penanggungan	Documented
69.	28 - Mei	Illegal logging (menggris trees)	< 6 months	Resort bungur	Documented
70.	28 - Mei	After fire area of 2-3 ha	< 1 week	RPTN Susukan Baru	Documented
71.	28 - Mei	After fire area of 100ha	< 1 month	RPTN Bungur	Documented
72.	28 - Mei	Track of trespasser	< 1 week	Penanggungan	Monitored
73.	28 - Mei	After fire area of 200ha	< 1 week	Penanggungan	Documented
74.	30 - Mei	After fire area of 1km persegi	< 6 months	RPTN Way Bungur	Documented
75.	31 - Mei	After fire area of 50ha	< 6 months	RPTN Bungur	Documented
76.	1 - Jun	8 Jerat biawak yang masih aktive	< 4 days	RPTN Bungur	Documented
77.	1 - Jun	After fire area	< 4 days	RPTN Susukan Baru	Documented
78.	10 - Jun	An old camp of bird trapping	< 1 week	SPTN Way Kanan	Documented
79.	20 - Jun	Illegal fising	< 4 days	Braja Kencana	Documented
80.	21 - Jun	A bridge of trespasser (4meter length)	< 1 yr	RPTN Rawa Bunder	Monitored
81.	21 - Jun	A bridge of trespasser (4meter length)	< 1 yr	RPTN Rawa Bunder	Documented
82.	21 - Jun	A bridge of trespasser (4meter length)	< 1 yr	RPTN Plang Hijau	Monitored
83.	28 - Jun	7 suspects of ikkegal fishing	< 4 days	Permata RPTN Way Kanan	Documented
84.	28 - Jun	Detected illegal fishing	< 1 month	Kali Biru RPTN	Documented

				Way Kanan	
85.	29 - Jun	Detected illegal fishing	< 1 month	Kali Biru RPTN Way Kanan	Documented
86.	29 - Jun	Detected 6 trespassers	< 4 days	Kali Biru RPTN Way Kanan	Documented
87.	12 - Jul	After fire area of 20 ha.	< 4 day	RPTN Susukan Baru	Documented
88.	12 - Jul	After fire area of 10ha	< 4 day	RPTN Susukan Baru	Documented
89.	12 - Jul	After fire area of 30ha	< 1 week	RPTN Susukan baru	Documented
90.	23 - Jul	Detected evidence of 10 m3 Gelam wood.	< 6 month	Sungai bayan RPTN Cabang	Documented
91.	24 - Jul	After fire area of 10 - 15 ha	< 1 week	RPTN Susukan Baru	After fire area
92.	24 - Jul	Illegal grazing of 50 cattles	< 4 day	RPTN Susukan Baru	After fire area
93.	25 - Jul	After fire area of 15 - 20 ha	< 4 day	SPTN Way Kanan	Documented
94.	25 - Jul	A snare for big mammals	< 1 month	RPTN Wako	Inactivated
95.	5 - Agust	Penggembalaan sapi dengan jumlah kurang lebih 30 ekor sapi	< 4 day	RPTN Susukan Baru	Documented
96.	5 - Agust	After fire area of 90ha di duga di gunakan sebagai lokasi pencarian rumput dan berburu	< 4 day	RPTN Susukan Baru	Documented
97.	5 - Agust	After fire area of 10 - 15 ha	< 4 day	RPTN Susukan Baru	Documented
98.	6 - Agust	After fire area of 5 - 10 ha,	< 4 day	RPTN Wako	Documented
99.	7 - Agust	Detected illegal fishing.	< 4 day	RPTN Wako	Unable arrested
100.	9 - Agust	Detected illegal fishing	< 6 month	Kali Biru RPTN Way Kanan	Inactivated
101.	13 - Agust	4 jerat rusa aktif	< 1 month	SPTN Plang Hijau	Inactivated
102.	19 - Agust	After fire area	< 4 day	RPTN Susukan baru	Documented
103.	8 - Sep	Suppressed after fire area of 10 - 15ha	< 4 day	PLG, SPTN III Kuala Penet	Suppressed
104.	9 - Sep	After fire area of 50 ha,	< 4 day	SPTN Bingur	Documented
105.	9 - Sep	1 suspect and 18 cattles	< 4 day	RPTN Susukan Baru	Documented
106.	13 - Sep	Kebakaran hutan dengan luas di perkirakan 100 ha	< 1 week	SPTN Way Kana	Documented
107.	17 - Sep	Detected fish poisoning in a river.	< 1 month	RPTN Bungur	Documented
108.	19 - Sep	After fire area of 20ha	< 4 day	RPTN Susukan Baru	Documented
109.	21 - Sep	After fire area of 10-15ha.	< 1 month	Gubug Asbes RPTN Rawa Bunder	Documented
110.	21 - Sep	Detected of mammals poaching.	< 4 day	Gubug Asbes RPTN Rawa Bunder	Documented
111.	23 - Sep	2 pcs of Gaharu wood.	< 1 year	Proyek Pancasila RPTN Plang Hijau	Documented
112.	23 - Sep	3 pcs of gaharu wood	< 1 year	Proyek Pancasila	Documented
113.	23 - Sep	Detected 4 snares for deer or wildpig.	< 6 month	Proyek pancasila RPTN Plang Hijau	Inactivated and Documented
114.	23 - Sep	Detected bird trapping ; 2 nets as	< 4 day	Proyek pancasila	Documented

		evidences.		RPTN Plang Hijau	
115.	24 - Sep	Detected signs of illegal fishing.	< 1 week	Wako atas RPTN Wako	Documented
116.	26 - Sep	Illegal grazing of buffalos	< 4 day	Sumpah RPTN Bungur	Documented
117.	7 - Oct	Detected about 10 ha after fired area .	< 4 days	Dewi, Wako atas	Documented
118.	7 - Oct	Arrested 4 suspect of fishing.	< 4 days	SPTN Plang Hijau , Pelaku Way Jepara	Documented
119.	7 - Oct	Arrested a suspect of illegal fishing; 35 kg evidence.	< 4 days	Babakan bambang, SPTN Plang Hijau	Investigated
120.	7 - Oct	Arrested a suspect of illegal fishing; 30 - 40 kg evidence.	< 4 days	Babakan Bambang SPTN Plang Hijau	Investigated
121.	7 - Oct	Detected 100 ha after fire area.	< 1 week	Mundu wako atas	Documented
122.	7 - Oct	Detected 150 ha after fire area.	< 1 week	Dewi, wako atas	Documented
123.	8 - Oct	Arrested 4 suspect of fishing by using electricity and net; evidence 100 kg fish.	< 4 days	Wako atas	Investigated
124.	8 - Oct	Arrested 6 suspect of fishing; evidences : 4 motorcycles and 10 kg fish.	< 4 days	Babakan Bambang SPTN Plang Hijau	Hand-overed/ Processed to Police office.
125.	8 - Oct	Arrested 2 suspects of fishing and evidence 4 kg of fish.	< 4 days	Babakan Bambang RPTN Plang Hijau	Hand-overed/ Processed to Police office.
126.	12 - Oct	Arrested 8 suspects of fishing and evidence : net and electric equipment. (using electricity)	< 4 days	Wako	Investigated
127.	14 - Oct	Arrested 1 suspect of illegal grazing.	< 4 days	RPTN Susukan Baru	Investigated
128.	14 - Oct	Arrested 3 suspects of firewood theft.	< 4 days	RPTN Susukan Baru	Investigated
129.	19 - Oct	Detected about 5-10 kg of poisoned fish in Negara Batin River.	< 1 weeks	Plang Hijau	Documented
130.	22 - Oct	Arrested 7 suspects of illegal grazing.	< 4 days	RPTN Toto Projo	Investigated
131.	22 - Oct	Illegal grazing of 29 buffalos.	< 4 days	RPTN Susukan Baru	Documented
132.	22 - Oct	Arrested 6 suspects of fishing ; evidence : 3 motor cycles and 2-3 kg fish.	< 4 days	RPTN Plang Hijau	Investigated and processed to Police office.
133.	24 - Oct	Detected 1 bullet as evidence of poaching (for elephant?).	< 1 years	RPTN Wako	documented
134.	25 - Oct	Detected 20 suspects of grazing.	< 4 days	Kolam Darmaji RPTN Rawa Bunder	Documented
135.	25 - Oct	Detected of buffalo dung.	< 4 days	RPTN Susukan Baru	Documented
136.	26 - Oct	Signs of trespassing, using bicycles.	< 4 days	Kali Batin	Monitored
137.	26 - Oct	Detected illegal grazing.	< 4 days	RPTN Susukan Baru	Di data
138.	30 - Oct	Detected 3 suspects of illegal grazing.	< 4 days	Karetan Susukan Baru	Di data dan di berikan pembinaan
139.	30 - Oct	Arrested I suspect of wildlife trader with evidence 1 wildpig.	< 1 days	Plang Hijau	Investigated by Park Aithority.
140.	30 - Oct	Arrested a suspect of fishing with evidence 10 kg fish.	< 1 days	RPTN Wako	Investigated

141.	31 - Oct	Detected 10 ha of after fire	< 6 months	Dataran tinggi RPTN Way Kanan	Documented
142.	5 - Nov	Detected signs of poaching	< 4 days	Gambas RI RPTN Rawa Bunder	Monitored
143.	5 - Nov	Detected 3 suspects of illegal grazing.	< 4 days	Gambas RI RPTN Susukan Baru	Investigated
144.	5 - Nov	Detected 2 suspect of traditional poaching, using 6 dogs.	< 4 days	Gambas RI, RPTN Susukan Baru	Surveillanced
145.	8 - Nov	Detected 2 suspect of poaching by using fire-arms.	< 4 days	Labuhan Ratu VI RPTN Plang Hijau	Surveillanced
146.	14 - Nov	Detected 3 suspects of illegal grazing.	< 4 days	SPTN Bungur	Investigated
147.	14 - Nov	Detected logs of gelam tree (no suspect)	< 6 months	SPTN Bungur	Documented
148.	14 - Nov	Detected 5-7 ha of after fire area.	< 1 months	SPTN Bungur	Documented
149.	14 - Nov	Detected 5-10 ha of after fire area.	< 6 months	SPTN Bungur	Documented
150.	14 - Nov	Detected 2 suspects of illegal grazing.	< 4 days	Rumbia RPTN Bungur	Documented
151.	14 - Nov	Detected 30-40 logs of Gelam, ready to be transported.	< 1 months	Rumbia SPTN Bungur	Documented
152.	14 - Nov	Detected 34 logs of Gelam, ready to be transported.	< 1 months	SPTN Bungur	Documented
153.	14 - Nov	Detected 50 logs of Gelam, ready to be transported.	< 6 months	SPTN Bungur	Documented
154.	15 - Nov	Detected 4 ha after fire area.	< 6 months	SPTN Bungur	Documented
155.	15 - Nov	Detected 30 cutted gelam trees.	< 6 months	SPTN Bungur	Documented
156.	15 - Nov	Detected evidence of illegal fishing (cabin, 22 nets, etc.) .	< 1 months	Sungai Rasau SPTN Bungur	Ruined and Documented
157.	16 - Nov	Detected 5 snares for monkey and 1 monkey evidence.	< 1 months	Rasau SPTN Bungur	Documented
158.	16 - Nov	Detected track of trespasser .	< 4 days	SPTN Bungur	Surveillanced
159.	16 - Nov	Detected 2 suspects of illegal logging (gelam tree) and 15 fallen trees evidence.	< 4 days	SPTN Bungur	Documented
160.	16 - Nov	Arrested 1 suspect of illegal fishing by using electric equipment .	< 4 days	SPTN Bungur (Rajawali)	Investigated
161.	4 - Des	Detected 4 active snares for deer and wild-pig.	< 1 weeks	Margahayu RPTN Plang Hijau	Inactivated
162.	8 - Des	Detected 1 old snare.	< 6 months	RPTN Rawa Bunder	Inactivated
163.	8 - Des	Detected 2- 4 ha after fire area.	< 4 days	RPTN Rawa Bunder	Documented
164.	8 - Des	Detected active trail of trespasser (illegal grazing).	< 1 months	RPTN Rawa Bunder	Documented
165.	8 - Des	Detected active trail of trespasser	< 4 days	RPTN Rawa Bunder	Documented
166.	8 - Des	Detected traditional poaching for deer, with 2 dogs.	< 4 days	RPTN Rawa Bunder	Documented
167.	8 - Des	Detected signs of poaching.	< 4 days	RPTN Rawa Bunder	Documented
168.	9 - Des	Detected a cabin of illegal fishing.	< 1 weeks	RPTN Rawa Bunder	Inactivated and documented
169.	9 - Des	Detected 4 nets for bird.	< 1 months	RPTN Susukan Baru	Documented
170.	9 - Des	Detected a fish trap.	< 4 days	RPTN Rawa Bunder	inactivated
171.	9 - Des	Detected track of trespasser, which using	< 1 weeks	RPTN Susukan	Documented

		motor cycle.		Baru	
172.	9 - Des	Detected track of trespasser	< 4 days	RPTN Rawa Bunder	Documented
173.	10 - Des	Signs of illegal fishing	< 6 months	Wako	Documented
174.	11 - Des	Detected new track of trespasser which using bicycle.	< 4 days	RPTN Susukan Baru	Surveillanced
175.	11 - Des	Arrested a suspect of illegal grazing.	< 4 days	Rantau Jaya Udik, RPTN Susukan Baru	Investigated
176.	12 - Des	Detected new track of trespasser which using bicycle	< 1 weeks	Gambas RI SPTN Susukan Baru	Investigated
177.	15 - Des	Detected 3 suspects of illegal fish.	< 4 days	RPTN Plang Hijau	Investigated
178.	16 - Des	Detected a bridge of trespasser.	< 1 days	Desa Margahayu	Surveillanced
179.	24 - Des	Signs of illegal grazing.	< 4 days	RPTN Rawa Bunder	Documented
180.	25 - Des	Arrested 4 suspects of illegal fishing.	< 4 days	Babakan Bambang	Investigated
181.	25 - Des	Detected 3 boats of illegal fishing with no suspects.		Babakan bambang	Ruined
182.	26 - Des	Detected evidence 6 fish traps.	< 6 months	Babakan Bambang	Ruined
183.	26 - Des	Detected evidence 2 fish traps.	< 6 months	Babakan Bambang	Ruined
184.	26 - Des	Detected an old cabin of Gaharu theft, no suspect.	< 6 months	Camp C	Ruined
185.	28 - Des	Detected 2 suspects of illegal grazing.	< 4 days	Plang Hijau	Investigated
186.	28 - Des	Detected 2 ha of after fire area.	< 1 months	Plang Hijau	Documented
187.	31 - Des	Detected 2 suspects of traditional poaching which using 11 dogs.	< 4 days	PT NTF	Investigated
188.	31 - Des	Detected 2 suspects of suspects of traditional poaching which using 3 dogs.	< 4 days	PT NTF	Documented

3. OFFENSES IN UJUNG KULON NP

No.	Date	Remarks <ul style="list-style-type: none"> Type of offense Forest / WL produce recovered Arm / Amunition recovered People arrested 	Age	Location	Action Taken Legal status/ comments
1.	12 - Feb	Fishing; 3 suspects.	< 4 day	pantai kalejetan	Stop the activity and destroyed evidence
2.	12 - Feb	Signs of fishing ; no suspects	< 6 Month	Seseupan	Inactivated
3.	12 - Feb	Signs of fishing ; no suspects	< 6 Month	Sodong sero	Inactivated
4.	12 - Feb	Signs of fishing ; no suspects	< 6 Month	Alor gede	Inactivated
5.	12 - Feb	Signs of fishing ; no suspects	< 1 day	Alor gede	inactivated
6.	12 - Feb	Signs of fishing ; no suspects	< 1 Month	Alor gede	Inactivated
7.	12 - Mar	Signs of bird trap. No suspect	< 6 Month	cilintang	inactivated
8.	22 - Mar	Signs of fishing (molusc) ; no suspects	< 6 Month	cibangkonol	Inactivated
9.	12 - Apr	Signs of illegal activities	< 1 Month	soge	Destroyed evidences

10.	17 - Apr	Illegal activity to collect marine biota	< 1 Month	alor jangkar	Destroyed evidences
11.	10 - Mei	Suspects of illegal activity from Kp.Sumur	< 4 days	Kp.Sumur	Took photo of suspects
12.	10 - Jul	Detected of bird trapping.	< 4 day		Inactivated the evidence
13.	12 - Jul	Detected of illegal activity	< 4 day		Inactivated
14.	12 - Jul	Detected of illegal activity	< 4 day		Inactivated
15.	12 - Jul	Bird trapping.	< 6 month	blok Cikarang	Inactivated
16.	13 - Jul	Honey collection. Lebah madu di blok Cikarang	< 6 month	blok Cikarang Pelaku	Ruined
17.	9 - Aug	Detected 2 trespassers	< 4 day	Kp Tamanjaya giran	Documented
18.	15 - Aug	Detected 6 trespassers	< 4 day	Kp Sidamukti Panimbang	Documented
19.	15 - Aug	Detected 3 trespassers	< 4 day	Kp Kiara gondok	Documented
20.	15 - Aug	Detected 7 trespassers in 2 boats	< 4 day	Kp Sidamukti	Documented
21.	15 - Aug	Detected 6 trespassers:	< 4 day	Kp Sidamukti	Documented
22.	15 - Aug	Detected 3 trespassers	< 4 day	Kiara gondok	Documented
23.	16 - Aug	Detected 3 trespassers	< 4 day	Kp Cikawung, Ciparay, Kiara gondok	Documented
24.	16 - Aug	Detected 2 trespassers: Juhdi, Eman	< 4 day	Kp Cikawung, Cibaliung	Interrogated
25.	16 - Aug	Detected 2 trespassers	< 4 day	Kp Cikawung	Interrogated
26.	16 - Aug	Detected 23 trespassers	< 4 day	Kp Cikawung, Ciparay, Kiara gondok	Interrogated
27.	7 Oct	Detected signs of illegal activity (bird trapping).	< 4 days	Kp paniis	Documented
28.	9 Oct	Detected suspect of illegal fishing.	< 4 days	pelaku berasal dari Kp cikawung	Investigated; ruined the equipment.
29.	9 Oct	Detected suspect of illegal fishing.	< 4 days	KP haseum cigorondong	Investigated; ruined the equipment.
30.	9 Oct	Detected suspect of illegal fishing.	< 4 days	Blok Cikarang	Investigated;
31.	9 Oct	Detected suspect of illegal fishing.		Blok Cimayang	Investigated;
32.	11 Oct	Detected mouse deer poaching , using snare	< 1 months	Blok Cirangsang (JRSCA area)	Inactivated snare
33.	12 Oct	Detected of bird trapping using net.	< 1 weeks	Blok Kp. Panis	Ruined the net
34.	15 Oct	Detected signs of illegal fishing; using 1 cabin	< 1 months	Blok Pangukusan	Documented and ruined the cabin.
35.	16 Oct	Detected signs of bird trappng. Using 1 cabin.	< 1 months	Blok Cilintang (JRSCA area)	Documented and ruined the cabin.
36.	16 Oct	Detected signs of honey collection.	< 6 months	Blok Cilintang (JRSCA area)	Documented
37.	17 Oct	Detected signs of honey collection.	< 1 week	Blok Cilintang (JRSCA area)	Documented
38.	17 Oct	Detected 3 snares for mouse deer.	< 1 week	Blok Cilintang (JRSCA area)	Inactivated
39.	17 Oct	Detected 1 bird trap.	< 1 week	Blok Cilintang (JRSCA area)	Inactivated
40.	17 Oct	Detected 1 bird trap.	< 1 week	Blok Cilintang	Inactivated

				(JRSCA area)	
41.	17 Oct	Detected 1 bird trap.	< 1 week	Blok Cilintang (JRSCA area)	Inactivated
42.	20 Oct	Detected signs of bird trapping	< 1 week	Blok Cilintang (JRSCA area)	Documented
43.	14 Nov	Detected encoachment .	< 1 week	Blok Citelang	Documented
44.	15 Nov	Detected 1 nets of bird poaching	< 1 week	Blok Ciperepet (JRSCA area)	Inactivated
45.	16 Nov	Detected 6 nets of bird poaching.	< 1 week	Blok Citelang	Inactivated
46.	18 Nov	Detected 2 suspects of encroachment.	< 4 days	Blok Cilanyere (JRSCA area)	Investigated;
47.	18 Nov	Detected 1 suspect of encroachment	< 4 days	Blok Gendir (JRSCA area)	Investigated;
48.	19 Nov	Detected illegal fishing, using 2 nets.	< 4 days	Blok Gendir	inactivated
49.	20 Nov	Detected 1 suspect of bird trapping.	< 1 day	Blok Gendir (JRSCA area)	Investigated;
50.	12 Dec	Detected 6 bird trapping.	< 1 week	Cimokla (JRSCA area)	Inactivated

YAYASAN BADAQ INDONESIA - YABI Rhino Foundation of Indonesia - RFI



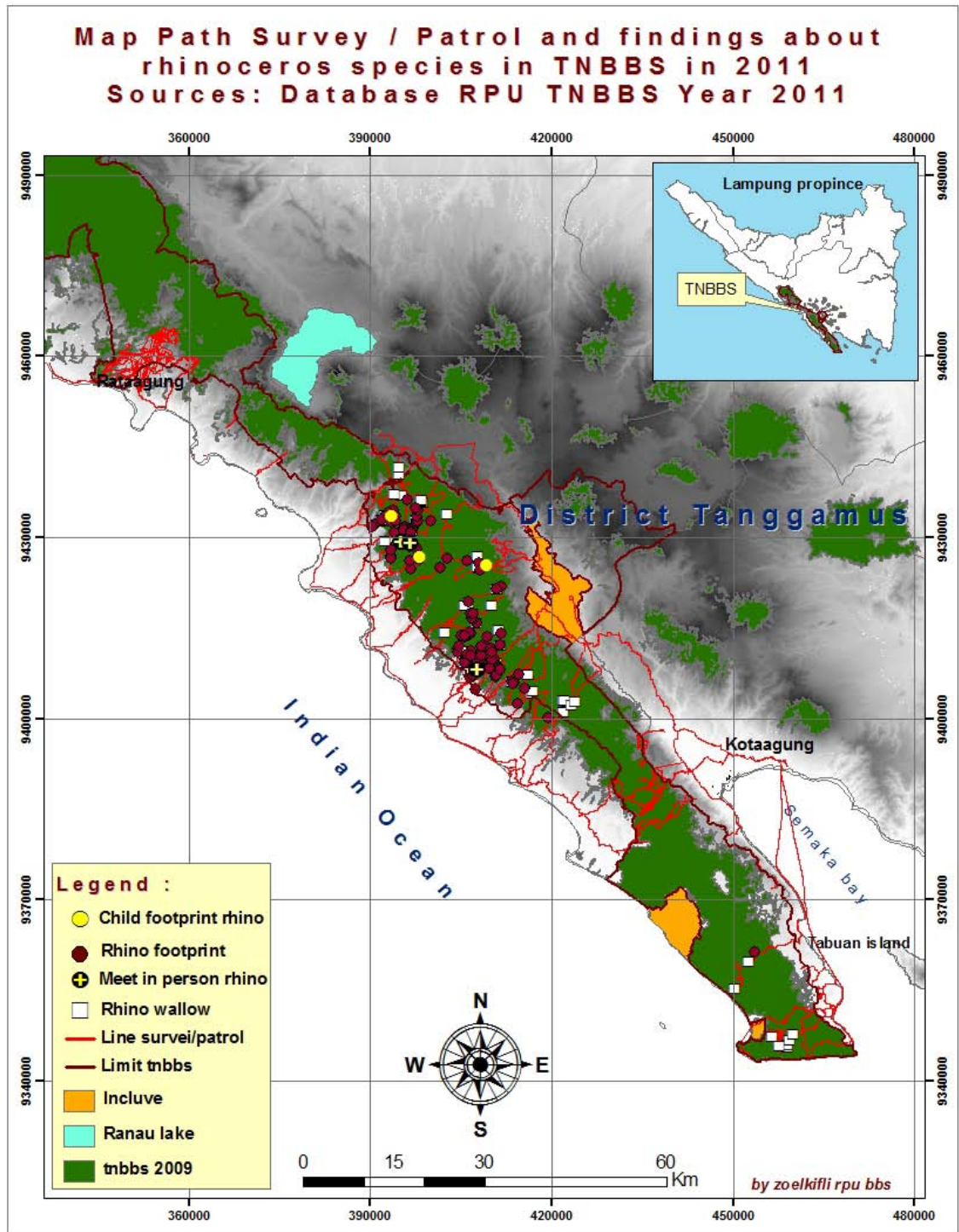
ANNEX- 3:

QUARTERLY ACTIVITY AND PERFORMANCE REPORT

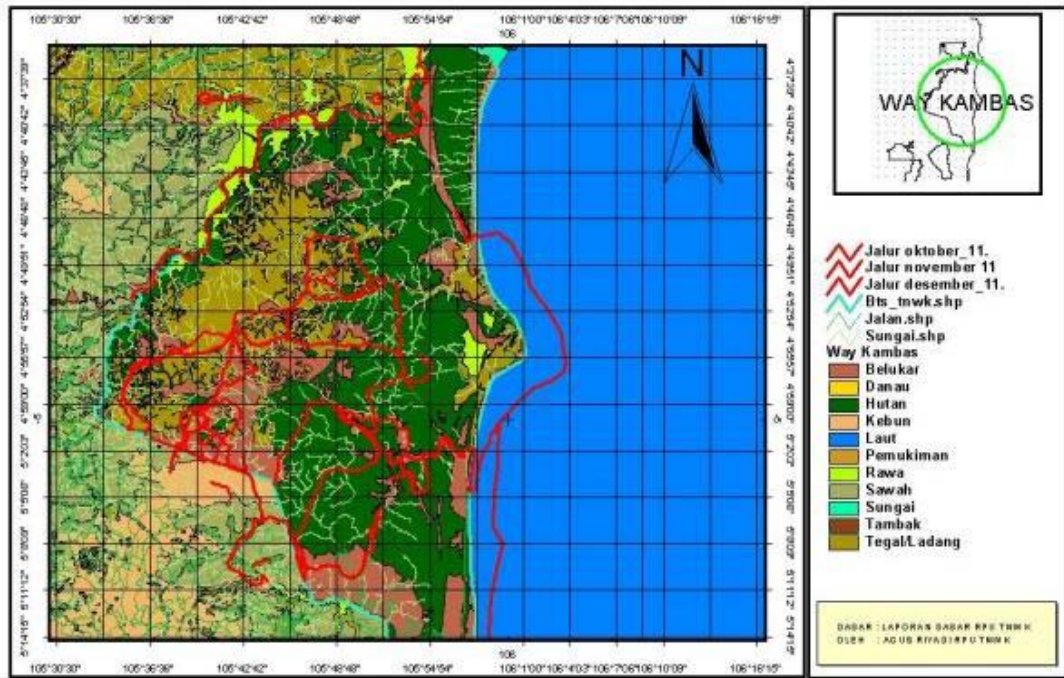
1 OCTOBER - 31 DECEMBER 2011
(Q4)

ANNEX - 3: MAP OF RPU ACTIVITIES AND ACHIEVEMENT

1. Map of rhino footprint encountered and Map of patrol route Q4 2011, in BBS NP

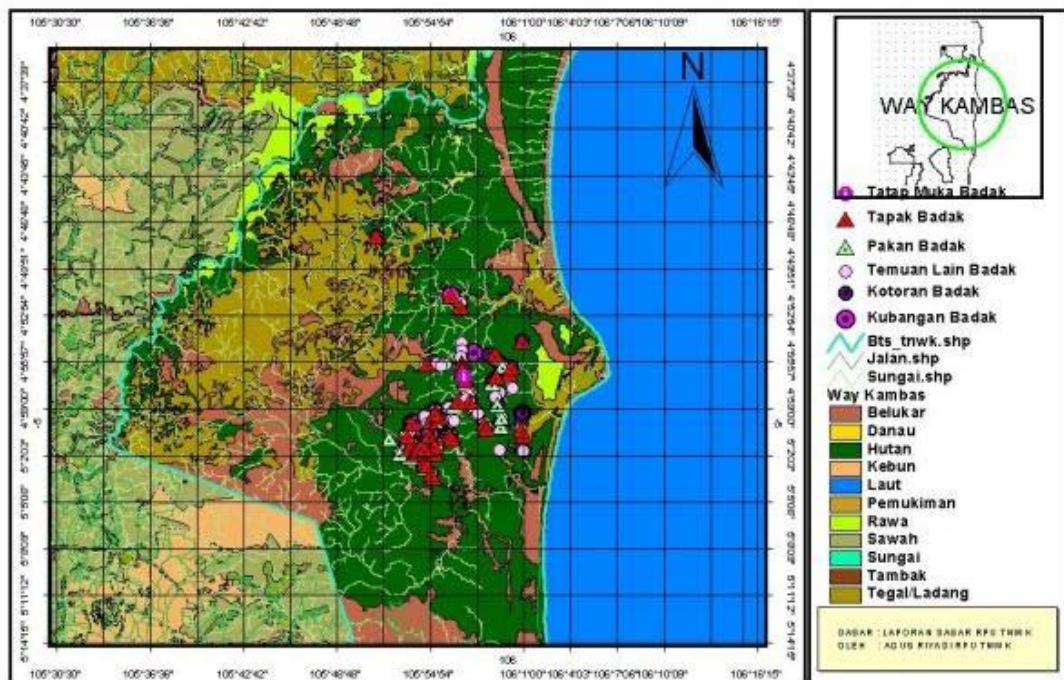


2. Map of Patrol route Q4 2011, in WKNP



SEKALA : 1:379493

3. Map of rhino foot-print encountered Q4 2011, in WKNP.



SEKALA : 1:328078

4. Map of patrol route, rhino foot-print and wallow encountered Q4 2011, in UKNP

