

AFRICA GEOGRAPHIC

<http://www.africageographic.com/magazines/africa-geographic/>

View or buy all the issues of this great African travel magazine



April 2012: All about rhinos

Special issue - rhinos & the poaching crisis

80 and counting...

That's the number of rhinos killed in South Africa in the first two months of 2012. We dedicate this entire issue to finding out about rhinos and their precious horn, establishing exactly what is driving the poaching onslaught and examining the pros and cons of suggested solutions.

features

All about rhinos

Find out what we know about Africa's rhino species – how many there are and where they live – and about their horns, the unique evolutionary attribute that arguably makes them the most controversial and written-about animals of our time.

A chequered past

Prior to colonial times, Africa's rhino population across all species is thought to have numbered in the hundreds of thousands, possibly over a million. From the 1800s to the present, our summary tells their story. Rhino numbers, however, remained guesswork until the 1960s – and even today there is an element of uncertainty that is compounded by secrecy for security reasons.



The crisis

Crisis? What crisis? After all, rhino numbers for both species in southern Africa are actually increasing. It sounds crazy given a poaching scenario that is seemingly so out of hand, but it is true. It doesn't mean that rhinos in the wild aren't in trouble though – they are. We unpick the inner workings of the poaching syndicates and look at what we know about the Vietnamese and Chinese consumers who are driving the demand.



The solutions

We know rhinos are in trouble. We know we want to save them. But how do we do this, in the face of such seemingly overwhelming odds? The proposed solutions are as hotly debated as they are numerous. Do we increase security and penalties, should we stop legal trophy hunting or focus our efforts on changing mindsets in Asia? We evaluate every one, including the hottest potato of them all: calls to legalise the trade in horn.

Find it here:

<http://www.africageographic.com/magazines/africa-geographic/>

Peter Borchert
Founder

We chose our engaging little model for the cover of this issue for two reasons: relief from the brutal images that inevitably accompany so many stories about rhinos these days, and as a message of encouragement: for as long as there are rhinos being born that will grow up in the wildest of possible circumstances, there is hope for the species. Our exhortation 'RUN BABY RUN' is, therefore, as much a call for our baby pachyderm to be the essence of what it is, as it is a call to run for its very life.



RHINO AID A-Z

TIM JACKSON

The rhino-poaching crisis has left you reeling. But what can you do to help? There are so many organisations claiming to work to further anti-poaching and conservation efforts that it's difficult to separate the good guys from the bad. **Rachel Lang, Jess Suter** and **Judy Beyer** have done their utmost to pick the ones you can trust.

HOTLINES

South Africa

SMS HOTLINE 32211

Anti-Poaching Intelligence Group Southern Africa (SMS only)

+27 (0)79 139 4527

Anti-Poaching Intelligence Group Southern Africa Tel. +27 (0)82 269 1364

Department of Environmental Affairs Hotline Tel. 0800 20 5005;

e-mail environment@tip-offs.com

EWT Poaching Hotline Tel. +27 (0)82 404 2128

Ezemvelo KZN Fraud and Unethical Practices (anonymous tip-offs) Freecall

0800 21 2126; unique e-mail kznwildlife@tip-offs.com

Nashua Wildlife Conflict Management Helpline Tel. +27 (0)82 802 6223

North West Parks Board Tel. +27 (0)14 555 1609/Steve Dell, tel. +27 (0)83 233 0571

Rhino Revolution Hotline Tel. +27 (0)82 385 9812

SANParks Crimeline Tel. +27 (0)82 908 3053; e-mail antipoaching@sanparks.org

SANParks Environmental Crime Investigation Tel. +27 (0)13 735 5109

SA Police Service

Crimeline Tel. 08600 10111

Hawks Rhino Hotline Colonel Johan Jooste, Endangered Species Section,

e-mail joostejohan@vodamail.co.za

Skukuza (Kruger Park only) Warrant Officer Coetzee, tel.+27 (0)79 891 5278

Namibia

SMS HOTLINE 55555

African Conservation Foundation (ACF) **V X**

How it works

The ACF is a registered UK charity working to protect Africa's endangered



UK reg. charity 1120705

wildlife and its habitat via an approach that tries to reconcile human development with biodiversity conservation. ACF supports rhino anti-poaching work in southern and East Africa.

Where your \$\$\$ go 100% of private donations and 94% of grants are directed into in-the-field conservation.

How you can support it Volunteer; donate online.

Contact E-mail info@africanconservation.org; www.africanconservation.org



African Conservation Trust (ACT) **C V X**

How it works

This South African non-profit trust works to conserve the environment through innovation, training and job creation. Funding is boosted with the annual SkyDive for Rhinos and, this year, the Put Foot Project rally. The 2012 goal is to raise R10-million.



SA NPO 030-243

Where your \$\$\$ go Funds support legitimate anti-poaching efforts and community initiatives. Donors specify how their money is to be used.

How you can support it Donate online; join the events.

Contact Tel. +27 (0)33 342 2844; e-mail funding@projectafrica.com; www.projectafrica.com



African Rhino Specialist Group, IUCN **X**

How it works

Founded by the IUCN, and a counterpart to the Asian Rhino Specialist Group, the African Rhino Specialist



Group's members comprise official rhino range-state representatives and supporters who focus on developing conservation strategies for the long-term maintenance of the various African rhino subspecies in the wild. The group's funds are managed by the Endangered Wildlife Trust.

Where your \$\$\$ go To expand rhino habitat and fight poaching.

How you can support it Donate via the EWT website.

Contact Via the websites www.ewt.org.za; www.iucn.org

African Wildlife Foundation (AWF) **CMSX**

How it works The US-based foundation has spent 50 years working to conserve the wildlife and wild spaces of Africa, and to empower the local people to protect the resources for themselves. AWF works across nine African Heartlands.



Where your \$\$\$ go AWF runs a wide range of successful projects by utilising private and individual donations. It has been awarded a four-star rating by the Charity Navigator for the past 10 years.

How you can support it Join AWF; adopt an animal or an acre of land; donate or leave a bequest online (select the programme you would like to support).

Contact E-mail africanwildlife@awf.org; www.awf.org



Asian Rhino Project **MVX**

How it works An Australian non-profit, volunteer organisation that raises awareness and support for the three Asian rhino species: the Sumatran, the Javan and the Indian. The project works in collaboration with the IUCN Asian Rhino Specialist Group, International Rhino Foundation, WWF and smaller range-state NGOs and boards.



Australia reg.

Where your \$\$\$ go The project receives funding for all administrative costs from a single donor. 100% of donations are committed to rhino conservation, e.g. habitat restoration.

How you can support it Donate or make a purchase online; make a bequest; adopt a rhino; volunteer.

Contact Tel. +61 (0)88 976 0952; e-mail kerry.crosbie@asianrhinos.org.au; www.asianrhinos.org.au



The David Sheldrick Wildlife Trust **CRX**

How it works Established in 1977 in memory of David Sheldrick MBE, a naturalist and founder warden of Tsavo East National Park in Kenya. Projects include raising and rehabilitating orphaned elephants and rhinos.



UK reg. charity 1103836

Where your \$\$\$ go The bulk of the donations are used to look after rhino and elephant orphans; the rest funds anti-poaching operations, mobile veterinary units, community outreach programmes and assistance for the Kenya Wildlife Service.

How you can support it Go online to donate funds or adopt an orphan.

Contact Tel. +254 (0)733 89 1996; e-mail rc-h@africaonline.co.ke



Afrika Force/Rhino Force **M**

How it works Afrika Force works to increase public awareness about environmental and conservation issues and to



raise funds for the Endangered Wildlife Trust's projects. Rhino Force, its partner, concentrates on selling bracelets to raise money.

Where your \$\$\$ go Income is directed into EWT's rhino fund and other projects.

How you can support it Buy a Rhino Force bracelet (outlets online).

Contact Joanne Lapin (Co-founder), tel. +27 (0)83 227 8888; e-mail lapin@icon.co.za; www.afrikaforce.org.za



Black Rhino Range Expansion Project (BRREP) **SX**

How it works A partnership between WWF, Ezemvelo KZN Wildlife and the Eastern Cape Tourism Agency, and supported by the Mazda Wildlife Fund. BRREP works to increase the numbers of black rhinos by facilitating partnerships between landowners to create larger areas for the animals. Offers security for source populations such as those in Hluhluwe-Imfolozi Park.



Where your \$\$\$ go Running the project.

How you can support it Donate via WWF and request that your donation supports BRREP.

Contact Tel. +27 (0)21 657 6600; e-mail psherriffs@wwf.org.za; www.wwf.org.za

Endangered Wildlife Trust (EWT) **CRSX**

How it works EWT's specialist teams are deployed throughout southern Africa to curb the trafficking of rhino and other animal products, improve security, conduct research, education and community initiatives and provide anti-poaching training.



SA NPO 015-502

Where your \$\$\$ go Income funds the projects.

How you can support it Become a member; donate online; become an EWT activist; buy a *Save Our Rhinos* CD (10% of each sale is donated to the trust); leave a bequest and purchase gifts online. A beneficiary of the MyPlanet programme.

Contact Tel. +27 (0)11 372 3600; e-mail nomondem@ewt.org.za; ewt.org.za; www.ewt.org.za



Anti-Poaching Intelligence Group Southern Africa **X**

How it works Established in 2001, this private non-profit group conducts investigations into wildlife crime, produces



PSIRA reg. 1601522

information and analysis and supports all wildlife enforcement efforts in southern Africa.

How you can support it Phone to report wildlife crime.

Contact Hotline (Kevin Bewick), tel. +27 (0)82 269 1364/SMS +27 (0)79 139 4527; e-mail antipoachingintelligence@gmail.com; www.antipoachingintelligencegroupsouthernafrica.wozaline.co.za/home

Bush Warriors **MV**

How it works A website and social media campaign to create global awareness about the plight of South Africa's wildlife and biodiversity, including rhinos. Daily features include news about a rhino aid organisation, a conservation message and a fresh image and video.



Where your \$\$\$ go Sponsors help to run and develop the campaign.

How you can support it Volunteers and interns are welcome.

Contact E-mail bushwarriors@gmail.com; www.bushwarriors.org



Forever Wild/Wilderness Foundation **CMSX**

How it works This Wilderness Foundation initiative was established to curb rhino poaching. The campaign aims to maintain populations of free-ranging rhinos within state and privately managed conservation areas, and encourages politicians and decision-makers to apply pressure globally to address the illegal trade in rhino horn.



SA NPO 009-437

Where your \$\$\$ go 10% of income furthers public awareness about poaching; 25% supports law-enforcement agencies; 50% facilitates rhino-security agencies; 15% helps rhino-security interest groups.

How you can support it Donate online.

Contact Andrew Muir (Director), tel. +27 (0)41 373 0293, e-mail info@sa.wild.org; www.wildernessfoundation.co.za

Game Rangers Association of Africa **X**

How it works Part of the Endangered Wildlife Trust and a member of Project Rhino KZN, the association (with partners SA Wildlife College and African Field Ranger Training Services and help provided by Liberty Wildlife Foundation in The Netherlands) trains field rangers, with a focus on developing anti-poaching skills and use of equipment.

Where your \$\$\$ go Training and equipment.

How you can support it Donate online.

Contact André Botha (Chairman), tel. +27 (0)11 372 3600, e-mail funding@projectafrica.com, andreb@ewt.org.za; general correspondence sec.gra@gmail.com; gameranger.co.za



NPO 010-572



Khama Rhino Sanctuary Trust **C S**

How it works

This community-based wildlife project, founded in Botswana in 1992 and named after then Lieutenant-General Ian Khama, was created to restore land, save and protect rhinos and help to benefit the Serowe community economically.

Where your \$\$\$ go Running costs of the sanctuary, education programmes, anti-poaching and community development.

How you can support it Visit the sanctuary; make a donation.

Contact Tel. +267 492 3416; e-mail krst@khamarhinosanctuary.org.bw; www.khamarhinosanctuary.com



Lowveld Rhino Trust **X**

How it works

Operating primarily in the south-east Lowveld of Zimbabwe, the trust works with the International Rhino Foundation, WWF and Save the Rhino International to increase the number and range of black and white rhinos in the country.

Where your \$\$\$ go Funds support veterinary care, biological management, information systems and anti-poaching measures.

How you can support it Donate via the websites www.rhinos-irf.org and www.savetherhino.org

Contact Via the website lowveldrhinotruster.org



The George Adamson Wildlife Preservation Trust **R X**

How it works The trust, started by the legendary George Adamson, works to conserve and manage Kora National Park and Mkomazi Game Reserve in Kenya, and to conserve the wild animals that roam there. The trust also runs a rhino sanctuary and breeding programme.

Where your \$\$\$ go Income provides the core funding of the trust.

How you can support it Donate online or become a friend of the trust.

Contact Tel. +44 (0)20 8343 4246; www.georgeadamson.org



Lewa Wildlife Conservancy **C X**

How it works A non-profit, privately run wildlife conservancy that grew from a smaller sanctuary created to protect northern Kenya's rhinos. Now, Lewa protects more than 12% of Kenya's black rhino population and some 14% of its white rhinos. The reserve collaborates with Ol Pejeta Conservancy to manage its wildlife.

Where your \$\$\$ go Management of endangered species, community conservation and development.

How you can support it Befriend Lewa; sponsor a rhino; check the wishlist and donate online.

Contact Tel. +254 (0)64 31405/(0)722 20 3562/3; e-mail info@lewa.org



Magquba Ntombela Foundation **X**

How it works

This non-profit organisation was founded by conservationist Ian Player in honour of his friend, ranger Magquba Ntombela.

Its legal team of intelligence-gathering and forensic experts supports Project Rhino KZN's anti-poaching efforts, thus helping both Ezemvelo KZN Wildlife and the South African Police Service to combat rhino poaching.

Where your \$\$\$ go Funds are used to purchase equipment and help finance the investigation team.

How you can support it Donate online.

Contact Tel. +27 (0)31 202 8700/(0)82 454 9441; e-mail funding@projectafrica.com/chris@vanheerdenlaw.co.za; www.mnf.org.za



SA NPO 000-315

International Rhino Foundation (IRF) **R X**

How it works

An NGO founded in response to the rhino-poaching crisis in Zimbabwe,

IRF operates specialist groups working in Africa and Asia, with the largest African programme conducted in partnership with the Lowveld Rhino Trust in that country.

Where your \$\$\$ go More than 85% of funds go directly into anti-poaching, monitoring, strategic relocations and veterinary care, although donors can request their contributions be used in Zimbabwe.

How you can support it Adopt a rhino, donate online or purchase equipment specified on the rangers' wishlist on the website.

Contact E-mail s.ellis@rhinos.org or via the website www.rhinos-irf.org



TIM JACKSON

Mazda Wildlife Fund **S X**

How it works A fund started by the Mazda motor company. It currently provides 30 vehicles to 29 NGO and NPO projects that cover aspects of conservation, research and environmental education.

Where your \$\$\$ go Mazda funds the provision and management of vehicles.

How you can support it By noticing the work that Mazda is doing. Watch the videos on the company's website.

Contact Tel. +27 (0)33 845 1359/1699; www.mazda.co.za



Mission Rhino **M R V X**

How it works A registered charity and trust dedicated to the preservation of rhinos in Africa. It also adopts orphaned rhinos and gets its rhino-protection message across via education and the media.



Where your \$\$\$ go Donations are used to provide food for the orphaned rhinos, to train anti-poaching squads and to help establish a rhino reserve.

How you can support it Donate online; leave a legacy; check the website for fundraising events; volunteers are required to help at events.

Contact Tel. +27 (0)11 691 9919; e-mail info@missionrhino.za.org; missionrhino.za.org; missionrhino.za.org



Nikela Rhino Rescue Project **M V X**

How it works This non-profit charity is operated solely by volunteers from around the world, promoting global awareness of the rhino crisis via its website and social media. Its Stop Rhino Poaching campaign works to counter illegal wildlife trafficking.



Where your \$\$\$ go 100% of donations are used to highlight awareness of the rhino crisis, support a rhino conservation documentary (yet to be aired) and contribute to anti-poaching ranger training.

How you can support it Donate online (donors can select a project to support); volunteer your services.

Contact E-mail nikela.info@gmail.com/wildlifemargrit@nikela.org; www.nikela.org



Pilanesberg Wildlife Trust **X**

How it works A non-profit organisation founded by personnel of the Pilanesberg National Park, North West Parks and Tourism Board, community leaders, businessmen and members of the public. The trust prioritises anti-poaching efforts to protect the park's rhinos.



Where your \$\$\$ go Donations are used to equip the anti-poaching units.

How you can support it Become a friend of the trust; donate online; make a bequest.

Contact Tel. +27 (0)14 555 5871/(0)14 555 1622; e-mail ajackson@nwptb.co.za/pilanesberg@nwptb.co.za; www.pilanesbergwildlifetrust.co.za

Moholoholo Wildlife Rehabilitation Centre **C R V X**

How it works A privately owned wildlife rehab centre in South Africa's Limpopo Province that breeds, rescues and rehabilitates wild animals, and educates people about biodiversity. Rhinos at the centre have been dehorned for their safety.



Where your \$\$\$ go Donations and income from bookings support the running of the centre.

How you can support it Donate online (you can choose where you'd like your money to go); check Facebook to see how to become a volunteer.

Contact Tel. +27 (0)84 511 3000; e-mail marisa@moholoholo.co.za; www.moholoholo.co.za



Ol Pejeta Conservancy **C V X**

How it works

This non-profit wildlife conservancy, the largest black rhino sanctuary in Kenya, supports endangered species, tourism and community-outreach programmes. Home to 87 black rhinos, the conservancy works in conjunction with neighbouring Lewa Wildlife Conservancy to manage the species.



Where your \$\$\$ go Income from wildlife tourism, livestock production and donors supports a community-outreach programme and sustains conservation initiatives beyond its boundaries.

How you can support it Donate online; open to volunteers.

Contact Tel. +254 (0)723 31 2673/(0)20 203 3244; e-mail info@olpejetaconservancy.org; www.olpejetaconservancy.org



Private Rhino Owners' Association of South Africa **R X**

How it works The association works with private landowners in South Africa who have either invested in or become custodians of rhinos to protect them.

Where your \$\$\$ go The group works with Lead SA's RAGE group, Stop Rhino Poaching and the Endangered Wildlife Trust to implement projects ranging from anti-poaching security to rhino orphanages. It also assists the South African Police Service's Hawks priority crime unit and SANParks.

How you can support it Donate to RAGE, Stop Rhino Poaching and EWT via their websites.

Contact Pelham Jones (Chairman), e-mail pelham@vibe.co.za; visit the associated organisations' websites.

MyPlanet **X**

How it works A partnership between the Endangered Wildlife Trust and a variety of commercial partners, the MyPlanet Rhino Fund enables South Africans to support rhino conservation and anti-poaching by swiping the MyPlanet card.



Where your \$\$\$ go The fund is administered by the EWT, which decides where the income would best be used. Projects include introducing sniffer dogs to detect illegal wildlife products and hosting a national rhino anti-poaching hotline (+27 (0)82 404 2128).

How you can support it Sign up for a MyPlanet card at any Woolworths store or online.

Contact Tel. +27 (0)21 469 4839; e-mail cs@myschool.co.za; www.myschool.co.za



Onderstepoort Veterinary Genetics Laboratory/RhODIS **S**

How it works

The Veterinary Genetics Laboratory (VGL) at the University of Pretoria conducts research that supports forensic investigations into rhino poaching. Its RhODIS database, an expanding index of the DNA of individual live and poached rhinos, provides a traceability system that helps to monitor animals and assists in the prosecution of rhino-related crimes.



Where your \$\$\$ go Research.

How you can support it Make a donation.

Contact Tel. +27 (0)12 529 8240; e-mail vgl@up.ac.za

Project Rhino KZN **M X**

How it works

An umbrella association formed by 15 conservation organisations to co-ordinate the elimination of rhino poaching and secure rhino populations in KZN. Endorsed by Ian Player.

Where your \$\$\$ go Funds are administered by the African Conservation Trust and are used to buy anti-poaching and other rhino-monitoring equipment, to upgrade skills and conduct education and awareness programmes.

How you can support it The website lists where funds and equipment are needed.

Contact Tel. +27 (0)33 342 2844 (African Conservation Trust); e-mail info@projectrhinokzn.org; www.projectrhinokzn.org



Protecting Animal Wildlife Conservation Trust (PAW) **S V X**

How it works

This non-profit organisation in north-east South Africa is run by a group of business executives and environmental scientists who mentor conservation and research projects such as habitat management and species protection. The trust also conducts conservation-related education.

How you can support it Donate via the website; volunteer.

Contact Via the website www.pawct.org



Rhino Fund Uganda **C R S X**

How it works

A registered NGO established in Uganda in 1997 with a single objective: to successfully re-introduce rhinos to the country. Through voluntary effort, to date it has seen six births in the sanctuary with three more expected this year.

Where your \$\$\$ go Rehabilitation, breeding and relocation of rhinos and other animals; community upliftment; conservation education.

How you can support it Donate online; become a member of the fund; adopt a rhino.

Contact Tel. +256 (0)77 271 3410; e-mail angie@rhinofund.org; www.rhinofund.org



Rhino Resource Center **M S**

How it works

The centre provides everything you need to know about rhinos, and a gallery of images can be found at this

archive edited by Kees Rookmaaker. There are thousands of references on rhinos in literature, most of which are available in full on the website. The centre is a small registered charity; the service is run by two part-time operators.

Where your \$\$\$ go Donations help to fund the work.

How you can support it Donate online; submit new research or images of rhinos.

Contact E-mail Kees Rookmaaker at rhinorr@gmail.com; www.rhinoreourcecenter.com



Protrack Anti-Poaching Unit **V X**

How it works The first wildlife anti-poaching unit in South Africa, Protrack trains candidates in conservation techniques, locating and removing signs of criminal activity such as snares, and using surveillance cameras.

Where your \$\$\$ go Training and purchasing and maintenance of equipment.

How you can support it Volunteer your services.

Contact Tel. +27 (0)15 793 2585; e-mail protrack@worldonline.co.za; www.protrackapu.co.za



Rhino Reality **M**

How it works

'Inform, involve and inspire' is the motto for this collaborative awareness campaign initiated by NGOs, the Wildlife ACT

Fund and WildAid, an international conservation media organisation. The focus is to end the demand for rhino horn via a well-researched multimedia campaign.

Where your \$\$\$ go Organising and managing filming and its related costs.

How you can support it Donate and sign the pledge online.

Contact Tel. +27 (0)82 888 8181; e-mail team@rhinoreality.org; www.rhinoreality.org



Rhino Revolution **M X**

How it works

This group of concerned citizens in Limpopo Province, South Africa, meets weekly to tackle the problem of rhino poaching via a seven-point agenda: dehorning

(as a possible solution), media, education, information, technology, reaction and funding.

Where your \$\$\$ go Donations fund the group's active involvement in measures to prevent rhino poaching in the Hoedspruit area.

How you can support it Donate online; an online store is under construction.

Contact Hotline +27 (0)82 385 9812; e-mail via website www.rhino-revolution.com



Rhino Action Group Effort (RAGE) **R X**

How it works A safe conduit for public contributions to rhino-related charities, RAGE assists with rhino reserve

security and communication, staff training, electronic equipment and investigations. Special projects include rhino orphanages, rescue and relocation. RAGE is a Lead SA initiative.

Where your \$\$\$ go RAGE is operated by a group of expert volunteers (ecologists, game-reserve owners, government members, etc.), who decide how best to use the money that is donated. All funds are accounted for.

How you can support it Donate online.

Contact E-mail info@rhinoactiongroup.org; samf@sanparks.co.za; www.rhinoactiongroup.org



Rhino Rescue Project **S X**

How it works A project founded at the Rhino and Lion Nature Reserve in Krugersdorp, South Africa, to provide a sustainable, cost-effective strategy to protect rhinos from poaching. The team tests the effects of treating rhino horn with poisons and dyes, and conducts research into microchips, tracking technology and DNA sampling and storage.

Where your \$\$\$ go All donations are currently spent on research.

How you can support it Primarily a service provider, the project's main source of income is the rhino owners who want their animals to receive treatment.

Contact Tel. +27 (0)82 210 5678; e-mail rhinorecueproject@gmail.com; www.rhinorecueproject.com



SANParks Honorary Rangers/ Unite Against Poaching **V X**

How it works An official SANParks volunteer initiative, the SANParks Honorary Rangers are a registered public benefit organisation established to fight threats to wildlife and to train game rangers. It administers funds raised for the purpose by Unite against Poaching, an initiative of Unitrans Volkswagen and Audi that donates to the organisation a portion of each vehicle sale.

Where your \$\$\$ go To purchase survival equipment and to train rangers in the Kruger National Park.

How you can support it Donate online; a MyPlanet beneficiary.

Contact Tel. +27 (0)11 795 5000; www.sanparks.org/www.uniteagainstopoaching.co.za



SanWild R V X

How it works

SanWild is a non-profit rescue and rehabilitation centre for wild animals, which, once healed, are released into the SanWild Wildlife Sanctuary. The wildlife may never be sold, traded or hunted.

Where your \$\$\$ go Funds are used to rescue injured and orphaned animals, for veterinary care and animal rehabilitation.

How you can support it Donate online; select the project you'd like to support; book a holiday at one of SanWild's two camps; volunteer your services.

Contact Tel. +27 (0)15 383 9958/(0)83 310 3882/(0)83 459 4913; e-mail louise@sanwild.org; www.sanwild.org/



Saving Private Rhino M X

How it works

The initiative, established by the owner of Aquila Private Nature Reserve in the Western Cape, campaigns to raise awareness of and gain support for the fight to save rhinos via the media.

Where your \$\$\$ go Funds are used to train anti-poaching personnel, buy anti-poaching equipment, and for vet fees.

How you can support it Donate online (there is a list of requirements to guide you); buy a T-shirt; offer your services.

Contact Tel. +27 (0)21 430 7260; e-mail media@savingprivaterhino.org; www.savingprivaterhino.org/ www.aquilasafari.com



SOS Rhino M R S X

How it works

Dedicated to preserving the five rhino species in their natural habitats, the Malaysia-based non-profit SOS Rhino is affiliated with professional organisations such as the IUCN Rhino Specialist Group and WWF. The programmes combine research, education, marketing and advocacy.

Where your \$\$\$ go To develop and support conservation programmes, to foster education and to exchange resources with professional governmental and non-governmental organisations.

How you can support it Donate online; adopt a rhino; buy a T-shirt.

Contact E-mail info@sosrhino.org; www.sosrhino.com



Save the Rhino International C M S X

How it works This established UK-registered charity supports 15 on-going rhino conservation programmes by funding a range of activities in collaboration with other conservation partners.

Where your \$\$\$ go 70% of donations support rhino monitoring and anti-poaching patrols, 20% goes to community conservation and environmental education; the remainder is invested in rhino management and research.

How you can support it Donate or buy merchandise online; support various fundraising events.

Contact Tel. +44 (0)20 7357 7474; e-mail Cathy Dean (Director) cathy@savetherhino.org or laura@savetherhino.org; www.savetherhino.org



UK reg. charity 1035072

Saving Rhinos M

How it works This US limited-liability company publishes news about the illegal trade in rhino horn and global rhino conservation issues.

Where your \$\$\$ go Saving Rhinos does not accept donations – online sales of T-shirts with English, Chinese and Vietnamese anti-rhino-poaching slogans are used to fund its work, with a portion going to The Partnership for Rhino Conservation in Nepal.

How you can support it Buy a T-shirt.

Contact E-mail info@savingrhinos.org; www.savingrhinos.com



South African National Parks (SANParks) S X

How it works SANParks manages 20 parks that represent the indigenous fauna, flora, landscapes and associated cultural heritage of the country. The organisation and its SANParks Honorary Rangers work to counter rhino poaching, gather intelligence and fight wildlife crime.

Where your \$\$\$ go Income supports the parks, runs scientific and veterinary departments and helps community-outreach programmes.

How you can support it Use the facilities; income is derived from entrance, lodge and trail fees.

Contact Tel. +27 (0)12 426 5000; e-mail via the website www.sanparks.org



Save the Rhino Trust – Namibia C X

How it works

A registered charity formed in 1982 to protect Namibia's rhino population.

Working closely

with Namibia's Ministry of Environment and Tourism, the trust focuses on enhancing rhino security for the Kunene and Erongo populations, patrolling and research, as well as providing benefits for the community and rallying community involvement. Supported by the Tusk Trust.

Where your \$\$\$ go Patrols, monitoring, vehicles and anti-poaching equipment.

How you can support it Adopt a rhino.

Contact Tel. +264 (0)64 40 3829/(0)67 69 7014; e-mail srt@rhino-trust.org.na; www.savetherhinotrust.org



Namibia W.O. 53

Sebakwe Black Rhino Trust C M X

How it works

A UK-registered charitable trust, Sebakwe focuses on protecting a small breeding group of black rhinos in the midlands

region of Zimbabwe. Managed by volunteer trustees, the initiative also supports local communities at the Sebakwe Conservation and Education Centre.

Where your \$\$\$ go 95% of income feeds projects such as the education centre, the rhino-adoption programme, fencing and guards.

How you can support it Become a member; donate online; adopt a rhino; leave a bequest.

Contact Tel. +44 (0)1993 83 0278; e-mail johngrippervet@compuserve.com or via the website www.blackrhino.org



South African Veterinary Foundation (SAVF) M R S

How it works SAVF is a long-standing non-profit company that raises money to promote a greater understanding of animals by means of research and informing the public. The foundation set up the Rhino Conservation Trust to focus on these animals.

Where your \$\$\$ go Donations support the treatment and care of injured rhinos, as well as post-mortem and sampling techniques to develop further knowledge of rhinos.

How you can support it Make a donation; set up a monthly debit order; cede an endowment or insurance policy; leave a bequest.

Contact Tel. +27 (0)12 346 1150/1; e-mail savf@sava.co.za; www.savf.org.za



Space for Elephants Foundation (SEF) **C S V X**

How it works SEF forms part of the Thanda/Space for Elephants Foundation Research Centre, which aims to gain knowledge about the needs of wildlife and local

communities to allow the development of management strategies using scientific research. Its projects include protecting and managing rhinos.

Where your \$\$\$ go Funds support the centre's projects.

How you can support it Donate (the website shows where help is needed); volunteer your services.

Contact Digs Pascoe (CEO), tel. +27 (0)82 926 2571/ (0)35 474 5181, e-mail funding@projectafrica.com; www.space4elephants.org/www.thanda.com



Thanda Foundation **C S X**

How it works A founder member of Project Rhino KZN, Thanda is part of the Thanda/Space for Elephants Foundation Research

Centre, which works to protect rhinos and educate communities about the value of the animals and the need to protect the province's wildlife legacy.

Where your \$\$\$ go The foundation acts as a conduit for funds raised for upliftment and conservation research initiatives.

How you can support it Thanda fundraises in conjunction with government and private organisations.

Contact Dulcie Oliver (Assistant General Manager), tel. +27 (0)86 184 2632; e-mail funding@projectafrica.com; www.thanda.com



Warriors for African Rhino (WAR) **M**

How it works An emergency coalition of civic voices comprising NGOs and voluntary associations whose memberships number 70 000-plus active and committed individuals

(almost 40 000 of them are South African citizens).

Where your \$\$\$ go WAR is primarily an umbrella organisation for South African civic voices.

How you can support it Together, the alliance represents the largest grouping of South Africans determined to counter the escalating scourge of rhino poaching.

Contact Charles Webster (Chairman), tel. +27 (0)82 331 7271; e-mail rhinowarriors@gmail.com; www.warriorsforafricanrhino.org



Stop Rhino Poaching **M S X**

How it works

A web-based platform dedicated to raising awareness about rhino poaching. It

provides accurate, up-to-date information, facilitates group rhino projects and provides a means to report suspicious activity. 'Rhino dogs' are being trained to locate poachers, protect handlers and sniff out ammunition and rhino horn.

Where your \$\$\$ go Income funds advanced field-ranger training, purchases equipment for anti-poaching personnel and conducts investigations.

How you can support it Become a member; purchase merchandise; sponsor a rhino dog.

Contact Tel. +27 (0)82 557 7615; e-mail elise@stoprhinopoaching.com; www.stoprhinopoaching.com



TRAFFIC **M S X**

How it works

TRAFFIC is a long-standing, UK-registered charity established

by a committee made up of members from partner organisations WWF and IUCN. This global network monitors wildlife trade to make sure it does not affect the conservation of natural ecosystems.

Where your \$\$\$ go Donations support research and the monitoring process.

How you can support it Become a friend of the organisation; donate online.

Contact Richard Thomas (Communications Officer) tel. +44 (0)1223 27 9068/(0)752 664 6216; e-mail richard.thomas@traffic.org; www.traffic.org



Wilderness Action Group (WAG) **X**

How it works A voluntary NGO

founded in Scotland in 1983 to promote the interests of wilderness conservation throughout southern Africa. Comprising professional people representing a variety of disciplines, WAG promotes the concept of wilderness protection in an African context, developing management legislation, providing conservation training courses and advice, and publishing scientific material.

Where your \$\$\$ go Donations support WAG's work.

Contact Ilan Lax (Chairman), e-mail hallax@sai.co.za; Sheila Berry (Deputy Chair), e-mail sheila.bee@gmail.com; www.wilderness.org.za



Strategic Protection of Threatened Species (SPOTS) **M X**

How it works

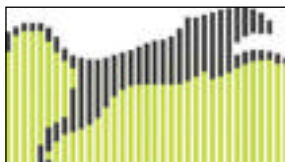
A registered organisation dedicated to identifying commercial and technical

opportunities for companies and institutions to add value to a variety of conservation projects.

Where your \$\$\$ go All funds are used to conserve wildlife or procure anti-poaching equipment, with 80% of income spent on rhinos.

How you can support it Donate online or by phone.

Contact Tel. +27 (0)83 443 5314/(0)84 703 1810/(0)82 412 4881; e-mail info@spots.org.za; www.spots.org.za



Tusk Trust **M V X**

How it works Tusk was established in 1990 in response to an urgent need to halt the decline in Africa's natural heritage and find a way to combine the interests of people and wildlife. It raises funds for a wide range of wildlife conservation projects, including elephants and black and white rhinos, across 17 countries in the continent. The Trust is a member of the Princes' Charities Forum.

Where your \$\$\$ go 80% of net funds support its work.

How you can support it Donate and visit the shop online; volunteer.

Contact +44 (0)17 4783 1005; e-mail info@tusk.org; www.tusk.org



Wilderness Wildlife Trust (Botswana Rhino Reintroduction Project/Liwonde Black Rhino Project) **S X**

How it works The trust is a collaborative effort by Wilderness Safaris, Wilderness Trust, the governments of Botswana and Malawi and

part-time volunteers in the community. Its projects were developed to create sustainable rhino populations in Botswana's Moremi Game Reserve and Malawi's Liwonde National Park, where rhinos became extinct in the 1980s.

Where your \$\$\$ go 70% supports reintroduction operations; 30% goes to security and monitoring.

How you can support them Donate online to Wilderness Wildlife Trust.

Contact E-mail info@wildernesstrust.com; www.wildernesstrust.com



Wildlands Conservation Trust **C X**

How it works This non-profit member of Project Rhino KZN works to restore ecosystems that underwrite the welfare of local communities. In a bid to preserve the province's rhino populations, Wildlands, working with Wildlife ACT, has implemented a GPS rhino-monitoring system in Somkhanda Game Reserve and an aerial monitoring programme.



SA NPO 004-949

Where your \$\$\$ go To support the trust's rhino and other wildlife initiatives.

How you can support it Donate online; adopt a rhino; check the website for details about fundraising events.

Contact Kevin McCann (Strategic Manager), tel. +27 (0)33 343 6380; e-mail kevin@wildlands.co.za / info@wildlands.co.za / funding@projectafrica.com; www.wildlands.co.za



World Wide Fund for Nature South Africa (WWF-SA) **C M S X**

How it works Linked to the WWF global network, this non-profit organisation addresses all aspects of rhino management and security in South Africa.



SA NPO 003-226

Where your \$\$\$ go Income is used

to improve forensic investigations into rhino crime scenes, to train rangers, to fund a white rhino DNA database and to provide a monitoring system for reserves. WWF also tackles the Asian demand for rhino horn.

How you can support it Donate online; buy re-usable rhino shopping bags at Woolworths; promote World Rhino Day on 22 September.

Contact Tel. +27 (0)21 657 6600/(0)11 447 1213; e-mail info@wwf.org.za; www.wwf.org.za



Wildlife ACT Fund **M V X**

How it works This group of experienced conservationists works in South Africa to save endangered and threatened species, primarily the black rhino (via the Rhino Reality project, which focuses on media campaigns to raise awareness) and the African wild dog.



Where your \$\$\$ go To buy equipment for the management and security of the animals, support local communities and further its custodial projects. A MyPlanet beneficiary.

How you can support it Donate online; spread awareness online; volunteer.

Contact Via the website wildlifeactfund.org



Working Wild **M R** NPO 015-502

How it works The initiative, which began life as the Wildcare Africa Trust, is run by Karen Trendler, a wildlife conservationist specialising in wildlife rescue, rehabilitation, crisis management, welfare and ethics. Her centre rescues and cares for rhino calves orphaned by poaching, along with other animals.

Where your \$\$\$ go Sales of the book *Wildcare*, about Trendler and her journey, by Mike Cadman help support the project.

How you can support it Donate; buy the book.

Contact Tel. +27 (0)72 969 4499; e-mail karajay@global.co.za; workingwild-karent.blogspot.com



SPEAK YOUR MIND

No cash to spare but want to have your say anyway? There are 250-plus rhino forums and charities on Facebook, many of which offer a platform for your views. We've listed a few of the most 'liked'. Many of the organisations in the main directory have Facebook and other online platforms as well. Online discussion may even persuade you to adopt a rhino, pledge a donation or volunteer your time!

All in for Rhino www.facebook.com/Africa.Geographic#!/AllinforRhino The group reveals the day-to-day struggles of anti-poaching units.

Battle against Rhino Poaching www.facebook.com/Africa.Geographic#!/pages/Battle-against-Rhino-poaching/116472038376474 A community site dedicated to helping people decide where best to donate money and to inform them about the perils of publishing pictures that show where rhinos live.

Friends of the Rhino www.facebook.com/FriendOfTheRhino Learn about the five surviving rhino species and why they are disappearing, and share info, news, research findings and conservation successes.

Outraged SA Citizens against Poaching www.facebook.com/Africa.Geographic#!/groups/OSCAP The group has formed an alliance with the Rhino Rescue Project to keep followers updated about the poaching crisis and what's being done by business and wildlife leaders to remedy it.

Protect the Rhino www.facebook.com/groups/36954076669/ A group dedicated to raising awareness about rhinos and other endangered wildlife.

Rights for Rhinos www.facebook.com/groups/36954076669#!/pages/Rights-for-Rhinos/192366490807550. This platform highlights the plight of Africa's rhinos.

An Ugly Truth www.facebook.com/groups/36954076669#!/pages/An-Ugly-Truth/158249270934211 Read about the everyday struggles of anti-poaching units.

NOTE While every effort has been taken to check that the organisations listed are honourable in their dealings, *Africa Geographic* is not responsible for events that occur once readers become involved with any of them. Constraints of space have led to some omissions.

Wildlife and Environment Society of South Africa (WESSA) **X**

How it works This national initiative is tackling the rhino-poaching crisis by supporting an increase in the number and quality of field rangers, assisting in the building of the rhino DNA database, gathering wildlife crime information, running education programmes and raising awareness. WESSA is a founder member of Project Rhino KZN.



SA NPO 000-716

Where your \$\$\$ go Funds are used to implement the programmes.

How you can support it Join the society; donate online or by SMSing 'Rhino' to 40706.

Contact Tel. +27 (0)33 330 3931; e-mail wessamembers@wessa.co.za; www.wessa.org.za



Zululand Wildlife Security Initiative **X**

How it works

The initiative, a member of Project Rhino KZN, is home to the Rhino Poaching Response Team, which trains rangers and shares information and resources across the Zululand reserves to combat rhino poaching. Phinda Game Reserve is a key driver of the initiative.



Where your \$\$\$ go To support the team and purchase anti-poaching equipment. Funds are distributed via the African Conservation Trust.

How you can support it Donate online.

Contact Tel. +27 (0)82 803 1026; e-mail dylan@zululandrhinoreserve.co.za / funding@projectafrica.com; www.projectafrica.com

AFRICA GEOGRAPHIC SPECIAL PLACES

TO ADVERTISE HERE, CONTACT
adsales@africageographic.com



NAIBOR CAMP

WESTERN CAPE, SOUTH AFRICA



Bartholomeus Klip Farmhouse

A Victorian farmhouse on a working farm close to Cape Town and the famous winelands, with a spectacular mountain backdrop and a fynbos nature reserve. Exceptional food and service.

Tel. +27 (0)82 529 8539

E-mail info@bartholomeusklip.com

www.bartholomeusklip.com



MADIKWE GAME RESERVE, SOUTH AFRICA



Etali Safari Lodge

Etali's accommodation comprises eight thatched, double luxury suites, each with its own en-suite bathroom. The suites each have a private deck with a spectacular view of the surrounding bush, and are also fitted with a private heated whirlpool.

Tel. +27 (0)12 346 0124

E-mail info@etalisafari.co.za

www.etalisafari.co.za

MADIKWE GAME RESERVE, SOUTH AFRICA



The Bush House

An intimate lodge that is a home away from home. Enjoy a relaxing, welcoming atmosphere that invites you to kick off your shoes. Set in the malaria-free Madikwe Game Reserve, this lodge is home to the Big Five and abundant birdlife.

Tel. +27 (0)76 694 0505

E-mail camp@bushhouse.co.za

www.bushhouse.co.za

WELGEVONDEN GAME RESERVE, SA



Nedile Lodge

Malaria-free Welgevonden Game Reserve is home to the Big Five and rare species such as the aardvark, pangolin, African wild dog and giant plated lizard. Nedile Lodge offers five-star accommodation for the safari connoisseur.

Tel. +27 (0)82 854 8841

E-mail info@nedile.co.za

www.nedile.co.za

WATERBERG, SOUTH AFRICA



Makweti Safari Lodge

Privately owned and a member of the prestigious Chaîne des Rôtisseurs, Makweti is a luxury lodge offering an authentic bush experience. This is a prime malaria-free destination in the Waterberg Biosphere – a World Heritage Site.

Tel. +27 (0)11 837 6776

E-mail makweti@global.co.za

www.makweti.com

SABI SAND RESERVE, SOUTH AFRICA



Djuma Game Reserve

Enjoy five-star luxury self-catering (a resident chef is available) and the freedom to plan your personal schedule and to savour the bush at your own pace. It's like owning your own game farm without the hassle.

Tel. +27 (0)13 735 5118

E-mail reservations@djuma.com

www.djuma.co.za



KRUGER NATIONAL PARK, SOUTH AFRICA



Rhino Walking Safaris

Rhino Walking Safaris offers a unique combination of Big Five game drives and multi-day walking safaris in the Kruger National Park.

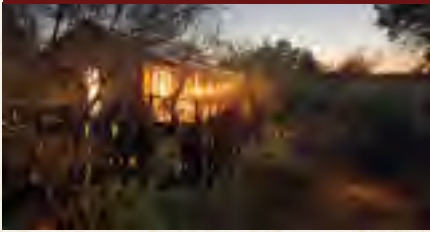
Choose to stay in a luxurious safari lodge or a tented camp, or spend the night under the stars.

Tel. +27 (0)11 467 1886

E-mail info@rws.co.za

www.isibindiafrica.co.za

LIMPOPO PROVINCE, SOUTH AFRICA



Kapama Buffalo Camp

Timeless tented safari style for only 20 guests, with en-suite rooms perched on platforms high above the riverbed and connected to each other by wooden walkways. A truly authentic African bush experience.

Tel. +27 (0)12 368 0600

E-mail res@kapama.com

www.kapama.com

BOTSWANA



Kwando Safaris

Six intimate camps in five diverse wildlife areas. Experience a 'Kwando' adventure from the desert to the delta and partake in a wide range of safari activities, from night drives to boating and nature walks. Open all year round.

Tel. +267 686 1449

E-mail info@kwando.co.bw

www.kwando.co.bw

MOREMI GAME RESERVE, BOTSWANA



Xakanaxa Camp

As one of Botswana's first photographic safari camps, this is one of the only safari destinations that provides an authentic year-round Okavango Delta land and water safari experience.

Tel. +27 (0)11 463 3999

E-mail info@moremi-safaris.com

www.xakanaxa-camp.com/www.moremi-safaris.com

SOUTH LUANGWA NATIONAL PARK, ZAMBIA



Kafunta River Lodge

Kafunta River Lodge is situated on the banks of the Luangwa River and offers accommodation of the highest standard in 10 luxury chalets. Daily game drives and night drives reveal the wildlife of this untamed African wilderness.

Tel. +260 (6) 24 6046

E-mail kafunta@luangwa.com

www.luangwa.com

LIVINGSTONE, ZAMBIA



Sanctuary Sussi & Chuma

This luxury lodge, just 10 kilometres upstream from the mighty Victoria Falls, features 12 treehouses with spectacular views across the Zambezi River and two private family houses on its banks.

Tel. +27 (0)11 438 4650

E-mail southernafrica@sanctuaryretreats.com

www.sanctuaryretreats.com

VICTORIA FALLS, ZAMBIA



Stanley Safari Lodge

The perfect gateway to the mighty Victoria Falls and an exclusive getaway in an African setting, Stanley Safari Lodge lies on a hill bordering the Mosi-Oa-Tunya National Park.

Tel. +27 (0)72 170 8879

Fax +1 206 350 0259

E-mail reservations@StanleySafaris.com

www.StanleySafaris.com

NIASSA RESERVE, MOZAMBIQUE



Lugenda Wilderness Camp

Niassa Reserve is twice the size of Kruger NP. With eight East Africa-style luxury tents, Lugenda Wilderness Camp is a destination for the discerning few. Our guides will take you out by vehicle or on foot each day to explore this wild place.

Tel. +27 (0)11 658 0633

E-mail enquiries@raniresorts.com

www.raniresorts.com

SAADANI NATIONAL PARK, TANZANIA



Saadani Safari Lodge

This small, intimate lodge is set in the heart of Saadani National Park, a wilderness of bush, beach and river ecosystems. This is one of the few places where you can find four of the Big Five in close proximity to the Indian Ocean.

Tel. +255 (0)22 277 3294

E-mail info@saadanilodge.com

www.saadanilodge.com

CHYULU HILLS, KENYA



Campi ya Kanzi

A real, inspiring eco-lodge. Come to enjoy game drives and game walks with Maasai professional guides and trackers, looking across to Mount Kilimanjaro. Here, responsible ecotourism preserves the Maasai heritage.

Tel. +254 (0)20 600 5450

E-mail bookings@maasai.com

www.maasai.com

Our hand-picked collection of African destinations...

MASAI MARA AND LAIKIPIA, KENYA



Kicheche Camps

Kicheche Camps offer premium wilderness safaris in exclusive conservancies in the striking Masai Mara and Laikipia areas. The hosts and teams of guides at our four intimate camps offer guests a first-class experience.

Tel. +254 (0)20 249 3569/3512 or 240 5586

E-mail sales@kicheche.com

www.kicheche.com

MASAI MARA, KENYA



Naibor Camp

Hidden in a grove of riverine woodland, this luxury tented camp combines contemporary style and comfort in the heart of the world-famous Masai Mara, only 20 minutes away from the spectacular migration crossings.

Tel. +254 (0)20 251 3147

E-mail enquiries@naibor.com

www.naibor.com

MASAI MARA, KENYA



Mara Explorer

This uniquely luxurious riverside camp in the heart of the Masai Mara National Reserve offers personal safari guides, lavish open-plan tents and Kenya's wildest outdoor bathtubs.

For big cat fans, this is the place to be.

Tel. +254 (0)20 444 6651/7929

E-mail sales@heritagehotels.co.ke

www.heritage-eastafrika.com

MASAI MARA, KENYA



Porini Camps

Experience an authentic safari in Kenya at the award-winning Porini Camps in exclusive wildlife conservancies in Amboseli, Laikipia and the Mara. Let our expert guides ensure the authentic safari experience.

Tel. +254 (0)20 712 3129

E-mail info@porini.com

www.porini.com

LAIKIPIA, KENYA



Lemarti's Camp

One of the World's Best Tented Camps, Lemarti's nestles on the banks of the Ewaso Ng'iro River. The camp, run by Samburu tribesmen, provides a rich cultural and wildlife experience, with a chance to see African painted dogs.

Tel. +254 (0)73 363 8147

E-mail inquiries@lemartiscamp.com

www.lemartiscamp.com

NILE RIVER, UGANDA



Wildwaters Lodge

Relax on our stunning, private island between two thundering Nile waterfalls, or choose from a menu of exciting adventure options. Cruise on the original *African Queen*, raft, jet-boat or bungee jump.

Tel. +256 (0)312 23 7438/+256 (0)772 23 7400

E-mail info@wild-uganda.com

www.wild-uganda.com

Wellness Retreats

LIMPOPO PROVINCE, SOUTH AFRICA

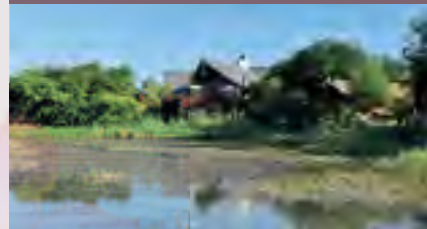


KAPAMA PRIVATE GAME RESERVE

One of South Africa's largest privately owned game reserves, Kapama is renowned for its superb game viewing. Three types of safari accommodation – Kapama River Lodge, Kapama Buffalo Camp and Kapama Karula – offer a distinctive safari experience. The new world-class wellness centre includes a well-equipped fitness room and two signature treatments for couples, namely the Marula Rasul Steam Treatment and Kapama Pinotage Bliss, combining a deep-body massage with an aromatic bathing experience in a detoxifying vine extract.

For bookings, contact: Kapama Private Game Reserve · Tel. +27 (0)12 368 0600/0861 Kapama · E-mail res@kapama.com · www.kapama.com

NORTH-WEST PROVINCE, SOUTH AFRICA



TAU GAME LODGE

Situated in the malaria-free Madikwe Game Reserve, Tau Lodge is accessible by scheduled flights or a four-hour drive from Johannesburg. Various species, including the Big Five, can be seen on game drives or at the waterhole at the lodge. Tau's five-star accommodation consists of 30 comfortable thatched chalets, all ensuring privacy, and each with its own wooden viewing deck. Revitalise and rejuvenate your body, mind and soul in the Spa Oasis, a calm sanctuary in uniquely African surroundings.

For bookings, contact: Tau Game Lodge Reservations · Tel. +27 (0)11 314 4350/49 Fax +27 (0)11 314 1162 · E-mail taugame@emweb.co.za · www.taugamelodge.co.za

Villas & Private Lodges

8 000 copies of *Africa Geographic* are distributed to hotels, lodges and island resorts throughout Africa. Advertise here to reach these guests: adsales@africageographic.com

GREATER KRUGER SURROUNDS, SOUTH AFRICA

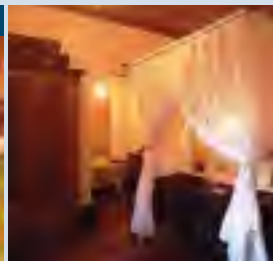


UMSISI HOUSE

Set amidst 60 hectares of pristine bush in the Jock of the Bushveld Conservancy, UmSisi House is strategically located between White River and the Numbi Gate entrance to the Kruger National Park (15 minutes away), and is the perfect base from which to explore the surrounding Lowveld. Panoramic views, beautiful gardens, abundant birdlife, walking trails, relaxing Jacuzzi, inviting swimming pool, library, TV room and Internet access. Booking service for local activities and Kruger safaris provided. Children of all ages welcome. TGCSA 5-Star Country House.

For bookings, contact: umSisi House • Tel. + 27 (0)13 750 1520/+ 27 (0)82 479 9700
E-mail amanda@umsisihouse.co.za • www.umsisihouse.co.za

WATERBERG, SOUTH AFRICA



HALKETT COUNTRY HOUSE

A romantic getaway with colonial charm, Halkett Country House is the perfect place to relax and unwind. This family-owned bushveld hideaway in the malaria-free Waterberg is an idyllic venue in which to rekindle friendships and lighten your spirit. Wine and dine in style in the 100-year-old farmhouse or savour starlit dinners and bush breakfasts. Enjoy hiking, horseriding, birding, tennis, sundowners, log fires or just lounging by the pool. Especially suited to small groups, this privately booked, fully-catered destination offers lifetime memories.

For bookings, contact: Halkett Country House • Tel. +27 (0)76 934 6856
E-mail info@halkett.co.za • www.halkett.co.za

WESTERN CAPE, SOUTH AFRICA



MOUNT RHODES WINE FARM

Located on Mount Rhodes Wine Farm on the edge of the Somerset West/Stellenbosch winelands is a magical villa that offers magnificent views of the False Bay coastline and the Helderberg mountain. You are just a 10-minute drive from the beach, golf courses, Helderberg Nature Reserve, horseriding facilities, shops and some of the best restaurants in South Africa, and it's all just 40 minutes from Cape Town. We offer everything you need for a mid-week break or a relaxing holiday. It's a true paradise.

For bookings, contact: Mount Rhodes Wine Farm
E-mail info@mountrhodes-manor.com • www.mountrhodes-manor.com

ADDO, SOUTH AFRICA



LONG HOPE VILLA AT RIVER BEND

Unique to the Addo Elephant National Park, this beautifully restored 1900s farmhouse offers luxury accommodation for up to six people and comes complete with a personal chef and a private guide. The interactive kitchen offers a wonderful experience as the chef prepares sumptuous meals, from five-course dinners to alfresco dining on hot summer evenings. An abundance of wildlife and over 400 bird species await discovery in this malaria-free region. A truly personal, exclusive safari experience ideal for small groups or families.

For bookings, contact: River Bend Lodge • Tel. +27 (0)42 233 8000 • Fax +27 (0)42 233 8028
E-mail reservations@riverbendlodge.co.za • www.riverbendlodge.co.za

The wellness industry is growing in leaps and bounds in Africa, and with good reason. Where else in the world could you receive an African mud pack while watching a herd of elephants stroll by?



ZAMBEZI RIVER, ZAMBIA



ROYAL ZAMBEZI LODGE

The Royal Zambezi Lodge is a five-star luxury destination located in an unparalleled position on the lower Zambezi River, with three kilometres of river frontage. Elephants wander along the river's edge as you watch from a plunge pool on your private deck. This is the perfect base for superlative game viewing and fishing, not to mention birdwatching, canoeing or simply relaxing. Guests are also invited to use the lodge's tranquil spa, making for a memorable African adventure. *World Luxury Hotel Awards Winner 2009 and 2010.*

For bookings, contact: Royal Zambezi Lodge • Tel. +260 979 48 6618
E-mail reservations1@royalzambezilodge.com • www.royalzambezilodge.com

NORTHERN BOTSWANA



SANCTUARY CHOBE CHILWERO LODGE & SPA

Deep in the heart of Botswana's wilderness lies Sanctuary Chobe Chilwero, one of the most enchanting places on earth, with breathtaking vistas and some of the most spectacular sunsets Mother Nature bestows. The lodge also boasts the only fully fledged spa on Botswana's safari circuit. The spa has been designed to blend clean, modern lines with authentic African influences that integrate with the natural surrounding landscape. It features an indoor spa bath, plunge pool, Vichy showers, hydrotherapy, relaxation area and private treatment rooms.

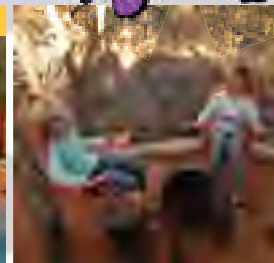
For bookings, contact: Sanctuary Retreats • Tel. +27 (0)11 438 4650 • Fax +27 (0)86 218 1482
E-mail southernafrica@sanctuaryretreats.com • www.sanctuaryretreats.com

Kids on safari



SANCTUARY CHICHELE PRESIDENTIAL LODGE

MADIKWE GAME RESERVE, SOUTH AFRICA



Tuningi Safari Lodge

This elegant, five-star lodge with its colonial African style is set in a tranquil valley in the magnificent malaria-free Madikwe Game Reserve in North West Province. Madikwe is home to the Big Five and is renowned for its successful African wild dog population. The daily game drives, with professional game rangers, are an exciting way to explore and experience the bush. Tuningi has been specifically designed for families and caters for children of all ages, with special programmes to introduce youngsters to the wild environment.

For bookings, contact: Tel. +27 (0)11 781 5384/(0)11 805 9995

E-mail reservations@tuningi.co.za/tuningilodge@emweb.co.za · www.tuningi.co.za

WESTERN CAPE, SOUTH AFRICA



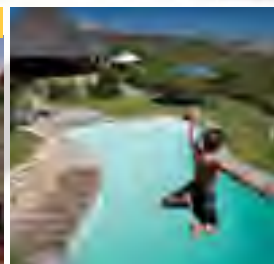
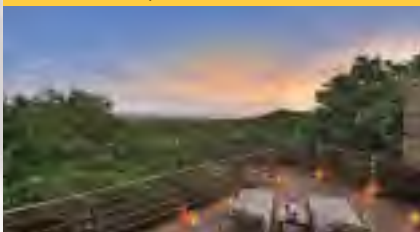
Aquila Private Game Reserve

The four-star, malaria-free Aquila Private Game Reserve is the ideal family getaway and is just under two hours from Cape Town. Visitors can drive among lions, rhinos, buffaloes and elephants, as well as abundant indigenous and re-introduced game. Enjoy even closer game viewing on horseback or quad-bike safaris while our experienced rangers ensure that your children have a little safari of their own, discovering the hidden gems of the Karoo. Real Africa, real close to Cape Town.

For bookings, contact: Aquila Private Game Reserve · Tel. +27 (0)861 737 3783

E-mail res@aquilasafari.com · www.aquilasafari.com

WESTERN CAPE, SOUTH AFRICA



Grootbos Private Nature Reserve

Exemplifying service excellence, this award-winning private nature reserve blends classic service with uncompromising luxury, excellent cuisine and fine wines, and incredible floral and marine life. The suites are welcoming, with cosy fireplaces and large exterior decks overlooking Walker Bay. Amble through the milkwood forests, let a trained guide show you the wonders of the plant and sea life or visit nearby Klipgat Cave. For the more adventurous, there are boat trips to view southern right whales or to dive with great white sharks.

For bookings, contact: Grootbos Private Nature Reserve · Tel. +27 (0)28 384 8000

E-mail reservations@grootbos.co.za · www.grootbos.com

EASTERN CAPE, SOUTH AFRICA



Umngazi River Bungalows & Spa

Situated on the magnificent Wild Coast, close to Port St Johns, is the award-winning family resort Umngazi River Bungalows & Spa. Umngazi is noted for its generous hospitality, the friendliness of the local Pondo people and as the quintessential escape from the hustle and bustle of faraway cities. Children are well catered for with daily activities that include dune boarding, mullet cruises, slippery slide and arts and crafts in the creative corner. We look forward to welcoming you to our little corner of paradise!

For bookings, contact: Umngazi · Tel. +27 (0)47 564 1115/6/8/9 · Cell +27 (0)82 321 5444

E-mail stay@umngazi.co.za · www.umngazi.co.za



SAMBURU NATIONAL RESERVE, KENYA



Samburu Intrepids

Perched on the banks of the Ewaso Ng'iro River in the wild heartlands of Samburu Reserve, Samburu Intrepids enjoys a unique perspective on one of Africa's most remote and untamed wildernesses. This luxurious tented lodge offers 30 modern tents with a private view over the riverbanks where herds of elephants, buffaloes and zebras come daily to drink. Samburu Intrepids has three family tents, so you are not far from the little ones. Our acclaimed Adventurers Club offers a uniquely educational safari for children of all ages.

For bookings, contact: Heritage Hotels · Tel. +254 (0)20 444 6651/7929

E-mail sales@heritagehotels.co.ke · www.heritage-eastafrika.com



Africa Geographic's travel clients cannot imagine visiting Africa without their children. These lodges in Africa go out of their way to offer a truly memorable and interactive experience in the wilderness.

MASAI MARA, KENYA



Mara Intrepids

Welcome to Mara Intrepids' Adventurers' Club – a unique holiday experience that combines a wild education with all the luxury and hospitality of East Africa's finest safari camp. Whether you visit with family, friends or classmates, we guarantee you the ultimate adventure. The lodge offers a variety of 'wild edutainment' activities and cultural experiences, and highly knowledgeable children's guides. Build your own Maasai homestead, quiver your own bow, catch and study butterflies and learn to make fire with sticks.

For bookings, contact: Heritage Hotels · Tel. +254 (0)20 444 6651/7929
E-mail sales@heritagehotels.co.ke · www.heritage-eastafrika.com

SOUTH LUANGWA NATIONAL PARK, ZAMBIA



Sanctuary Chichele Presidential Lodge

Located in the game-rich South Luangwa National Park, Sanctuary Chichele Presidential Lodge welcomes children of all ages. Our programme for younger visitors includes tracking and trails, making paper from elephant dung and exploring the interactive room. All the suites are decorated in an understated colonial style and the lodge also offers an interconnecting and two triple rooms – making it ideal for families. Private terraces are the perfect vantage point from which to watch the sun rise over the Luangwa Valley.

For bookings, contact Sanctuary Chichele · Tel. +27 (0)11 438 4650
E-mail southernafrica@sanctuaryretreats.com · www.sanctuaryretreats.com

Beaches & Islands



NORTH-EAST COAST, MADAGASCAR



Masoala Forest Lodge

Masoala's luxurious tented accommodation lies in a pristine paradise between a warm, coral-rich sea and a primary rainforest teeming with wildlife. Enjoy guided walks, snorkelling, whale watching, fishing, sea kayaking, clear forest streams and private beaches.

E-mail masoalaforestlodge@gmail.com
www.masoalaforestlodge.com

EASTERN CAPE, SOUTH AFRICA



Mbotyi River Lodge

A comfortable lodge in a setting famous for spectacular hikes, abundant birdlife and pristine Wild Coast beaches. 48 double rooms in thatched bungalows or wooden cabins offer sea, lagoon or forest views.

Tel. +27 (0)39 253 7200/1/+27 (0)82 674 1064
E-mail info@mbotyi.co.za
www.mbotyi.co.za

KWAZULU-NATAL, SOUTH AFRICA

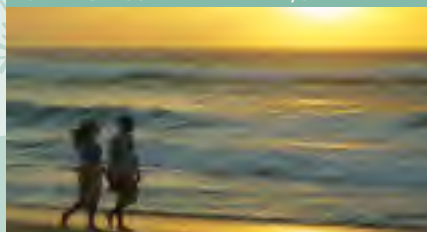


Thonga Beach Lodge

Thonga Beach Lodge – set on the pristine Maputaland coast – is a magical intimate lodge set amongst unspoilt beaches, protected snorkelling reefs, exclusive scuba diving sites, coastal forests and shimmering lakes.

Tel. +27 (0)35 474 1473
E-mail res@isibindi.co.za
www.isibindiafrica.co.za

ISIMANGALISO WETLAND PARK, SA

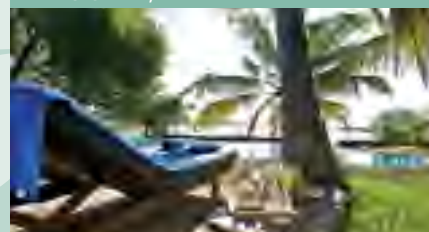


Rocktail Beach Camp

Set in Maputaland on 40 kilometres of pristine coastline, Rocktail offers private beaches, lush coastal forests and one of the best scuba-diving sites in the world on 15 exclusive reefs.

Tel. +27 (0)11 257 5111
E-mail info@wilderness-adventures.com
www.wilderness-adventures.com

LAMU ISLAND, KENYA



Kipungani Lamu


A secluded barefoot retreat on the ancient Arabian island of Lamu off north-eastern Kenya, Kipungani is regarded by many people as the most exotic, romantic coastal hideaway on the entire East African coast.

Tel. +254 (0)20 444 6651/7929
E-mail sales@heritagehotels.co.ke
www.heritage-eastafrika.com


Great African Experiences



SOUTH AFRICA




Marine Dynamics Shark cage diving




The ultimate shark cage diving experience with an on-board marine biologist to educate you about this amazing apex predator that you will meet up close and personal.


Tel. +27 (0)82 380 3405
dive@sharkwatchsa.com
www.sharkwatchsa.com



AFRICA TRAVEL




Indri Ultimate Mammal Voyages Wildlife Safaris



Contact us for the exclusive African tailor-made holiday of your dreams. We also offer worldwide guided wildlife tours.

Tel. +27 (0)21 783 4380
info@indritours.com
www.indritours.com

AFRICA TRAVEL




Jamila Safaris Gap year adventure travel

Our objective is to provide you with many travelling destinations in Africa. We offer adventure tours, gap year travel, African safaris and fly fishing!

Tel. +27 (0)83 356 4601
pandora.postnet@gmail.com
www.jamilasafaris.co.za

SERENGETI NP, TANZANIA



Wayo Africa Migration walking safaris

Walk with millions of migration animals in the Serengeti National Park and explore its remote wilderness with our experienced guides. Overnight in a small, stylish mobile camp.

Tel. +255 (0)78 420 3000
info@wayoafrika.com
www.wayoafrika.com

NAMIBIA




Tok Tokkie Trails

Get up close and personal with the Namib and join our exclusive walking trail in Namibia's stunning NamibRand Nature Reserve. This three-day/ two-night tour is leisurely, personal, fully catered and expertly guided.

Tel. +264 (0)61 264 521
toktokkie@toktokkietrails.com
www.toktokkietrails.com

NAMIBIA



Namibia Horse Safari Company Unique, unforgettable riding adventures

Experience great riding adventures through dramatic NAMIBIAN scenery. Explore the NAMIB DESERT • FISH RIVER CANYON • DAMARA ELEPHANT LAND • DESERT HORSE COUNTRY. Organised by Sarah Jane Gullick and Dr Telane Greyling.

info@namibiahorsesafari.com
www.namibiahorsesafari.com

FOR ALL ADVERTISING ENQUIRIES



Tel. +27 (0)21 762 2180
 Fax +27 (0)21 762 2246/086 541 6127 (South Africa only)
adsales@africageographic.com

PHOTOGRAPHIC AFRICA



A hand-picked collection of photographic destinations, specialist guides, workshops, courses and product suppliers in Africa.



SHENTON SAFARIS

GRANT ATKINSON PHOTOGRAPHIC SAFARIS



Grant Atkinson will be leading several photographic safaris to exciting wildlife destinations. The trips are for small groups only and are suited to photographers of all abilities. Grant will utilise his knowledge and anticipation of wildlife behaviour to maximise photographic opportunities. He will also assist members of the group with camera technique and processing workflows.

For detailed itineraries and departure dates, go to www.grantatkinson.com or e-mail atkinson.grant@gmail.com

SUZI ESZTERHAS TOURS



Join professional wildlife photographer Suzi Eszterhas for some of the world's best photo opportunities in wonderful locations. Comfortable, fun and educational, the tours are suitable for all levels of experience. Visit our website for more information.

Wildlife of Madagascar 29 Sept – 15 Oct 2012
Mountain Gorillas 19 – 28 Oct 2012
Wildlife of Costa Rica TBA Jan 2013
Wildlife of Brazil TBA Sept 2013

suzi@suzieszterhas.com
www.suzieszterhas.com

DAVID ROGERS WORKSHOPS



David Rogers leads small photographic groups into Africa's wild places.

Now taking bookings for:
 Lower Zambezi, Luangwa: April/July 2012
 Namibia: June 2012
 Zimbabwe: August 2012
 Mara Migration: September 2012
 South Luangwa, Predators: October 2012
 South Luangwa, Emerald: March 2013

+27 (0)82 784 3309
david@davidrogers.co.za
 Visit www.davidrogers.co.za for trip details, photo tips and FAQs.

FUN PHOTOGRAPHY WILD



Learn photography while on safari!

Photographic Safari Workshops in stunning locations!

+263 772 44 00 52 (Zimbabwe Cell)
chris@scottypography.net
www.funphotographywild.com



PICTURE AFRICA



Offering unique photographic courses and safaris that combine bush training with photography, tailor-made to suit all levels of experience. Our professional photographers and guides will help you to develop your knowledge and skills. Stay in our private reserves or in our tropical beach camp during our courses, or join us on one of our Amazing African safaris.

+27 (0)79 899 8879
info@picture-africa.com
www.picture-africa.com



SOUTH LUANGWA NATIONAL PARK, ZAMBIA



KAINGO CAMP – SHENTON SAFARIS

Situated in a part of the South Luangwa National Park exceptionally rich in wildlife, particularly big cats, Kaingo Camp and Mwamba Bush Camp offer unparalleled photographic opportunities. Outstanding guiding by vehicle, foot and in specialist photographic hides assures photographers a safari without equal.

'Shenton Safaris' network of photographic blinds are a tribute to Derek Shenton's ingenuity and to his superb knowledge of the wildlife of the Luangwa Valley.'

Frans Lanting, *National Geographic*

info@shentonsafaris.com or info@kaingo.com • www.shentonsafaris.com

LOWER ZAMBEZI, ZAMBIA



BAINES' RIVER CAMP

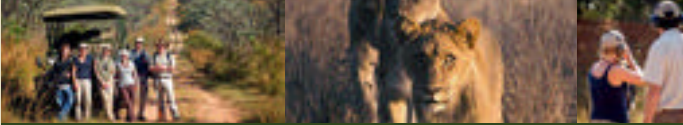
Overlooking the mighty Zambezi River and Mana Pools World Heritage Site, Baines' River Camp offers elephant workshops, fly-fishing clinics, birding weeks and photographic workshops. Explore 4 000 square kilometres of unfenced wilderness with us and learn how to get the best out of your camera gear under the professional guidance of David Rogers. With just eight double suites and a fully equipped studio, Baines provides the luxury base for a safari experience of a lifetime.

Tel. +27 (0)82 806 4074

info@bainesrivercamp.com • www.bainesrivercamp.com

GUIDE TRAINING & JOB PLACEMENTS

AFRICA NATURE TRAINING



The mission of our family-owned and run business is to provide unsurpassed quality in Field Guide and nature education – this we guarantee!

ANDREAS KARLSSON

Join us for the following professional and short courses:

- Nature Enthusiast Course: part-time, year-long, Johannesburg-based
- Correspondence Course: learn about southern African wildlife from anywhere in the world
- FGASA Level 1 course: for prospective Field Guides
- Introductory and Advanced Rifle Courses
- Birding Course
- Tracking Course
- African Ranger Experience
- Youth Nature Programmes

Tel. +27 (0)12 667 5440

info@africanaturetraining.co.za
www.africanaturetraining.co.za



ULOVANE ENVIRONMENTAL TRAINING



With over 15 years of experience, we know that our passion and commitment to the areas of flora, fauna, personal development, guest service excellence and hospitality set us apart!

Our courses range from a FGASA two-year Level 2 course to a 10-week FGASA Level 1 course, as well as specialised courses for existing FGASA Level 1 guides.

27 (0)83 295 3206
Candice@ulovane.co.za
www.ulovane.co.za



MOTSUMI BUSH COURSES



- 13-Week all inclusive Level 1/2 Nature Guide Course
- 6-Week Trails Guide/Rifle Handling/ Dangerous Animals Course
- 5-month L1, Trail Guide, L2/3 Theory, Advanced Birding, First Aid & 4x4 courses
- Specialist 10-day Bush Whisperer Safari for nature lovers who want to develop in-depth knowledge about the bush
- Tailor-made courses for all levels
- Assessments for all levels



Bennet de Klerk +27 (0)82 926 7830
motsumi@iafrica.com
www.motsumibush.com

Professional Nature, Marine, Trails Guide and Conservation Training

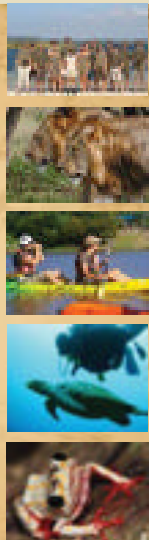


We are based in Northern KwaZulu Natal from where we explore the many Coastal, Marine and Terrestrial habitats that Zululand and the Elephant Coast has to offer. Nature Training has never been this exciting, this diverse, and filled with so much opportunity!

Our well structured academic and practical learning programmes take place in one of the most biologically diverse regions in Southern Africa and include:

- 3 Year Advanced Nature Guiding and Wildlife Conservation Programme (Includes Terrestrial and Marine Conservation)
- 1 Year Professional Nature Guide
- 10 Week FGASA Level 1 Nature or Marine and Coastal Guide

E-mail: info@bhejanenaturetraining.com
Phone: Christa 083 726 3826
Download our full Prospectus at
www.bhejanenaturetraining.com



ANTARES FIELD GUIDE TRAINING CENTRE



88-days FGASA level 1 course

Join us on Balule Nature Reserve and study to qualify as a professional field guide. A 88-day course gives you ample time to complete the curriculum and gain valuable practical experience prior to being assessed. Successful students can register as SITE guides for Kruger National Park and surrounding reserves.

27 (0)15 769 6006/
(0)83 286 8281
ian@antares.co.za
www.antares.co.za



LIMPOPO FIELD GUIDING ACADEMY



We offer professional field-guide training and development with the best trainers in the business. We will train you to get real qualifications.

We offer the FGASA-endorsed two-month level 1 programme with national qualification.

Linky +27 (0)72 625 4709
Office +27 (0)14 736 4757
info@limpopotraining.co.za
www.limpopotraining.co.za



BUSHWISE FIELD GUIDES

Join Bushwise on our One Year or Six Month Professional Field Guide Courses

One of THE most comprehensive FGASA Level 1 Field Guide Courses available, including a variety of other qualifications!

Make reference to this ad and benefit from amazing savings!

Landline: +27 (0)21 671 2980
info@gviworld.com | www.bushwise.co.za



FOR ALL ADVERTISING ENQUIRIES



adsales@africageographic.com
Tel. +27 (0)21 762 2180
Fax +27 (0)21 762 2246/
086 541 6127 (South Africa only)

BUSH BLINDS

Introducing a quick and easy Bird Watching / Photography / Game Viewing blind that erects and packs away in under a minute.



For other models go to:
www.sadetrade.co.za
Contact Shayne Call: +27825781588
Email: shayne@sadetrade.co.za
DEALER ENQUIRIES: WWW.COM



The ultimate pick me up! Talk to us, it's a truly uplifting experience.

GAME LODGE SERVICES & PRODUCTS

8 000 copies of *Africa Geographic* are distributed to hotels, lodges and island resorts throughout Africa. Advertise here to reach these guests: adsales@africageographic.com

FEDERAL AIR



As southern Africa's market leader in specialist Aviation, offering Shuttle, Scheduled and Charter services, we provide guests with exceptional, personalised service direct to Africa's premier game lodges as well as to any other destination in Africa or around the world. With our impressive fleet of over 40 aircraft, your choice of travel arrangements is limited only by your imagination. Every guest is a first-class passenger enjoying a host of personalised benefits, unmatched in the industry.

+27 (0)11 395 9000 • info@fedair.com • www.fedair.com



African tusk Clothing

Lodge and Hotel Uniforms

www.africantusk.co.za
info@africantusk.co.za
 1 +27 44 343 1071

eChef

Chefs Wear & Kitchen Garments

Suppliers of the Finest Products to the Hospitality Industry

LIVINGSTONES

BUY ONLINE

www.livingstonesupply.co.za
order@livingstonesupply.co.za
 +27 11 802 5800

Award winning architects
 Contemporary luxury lodge design & interior
 Sustainable green architecture

neo dimensions ARCHITECTS

Email: info@neodimensions.co.za Website: www.neodimensions.co.za

LULA CONCEPTS

Lula Concepts presents to the hospitality industry a *comprehensive turnkey solution* that includes design, product sourcing, supply, logistics, exportation, project management and installation. In addition, we manufacture our own linen and furniture locally. Lula, translated as 'easy', takes pride in supplying our clients with *quality products at competitive prices within the stipulated time frames.*

+27 (0)11 486 0393/3691
sales@lulaconcepts.co.za
www.lulaconcepts.co.za

Walter Stone Watches

Hand-manufactured to order

WSW.CO.ZA

WildNet Africa Properties

Specialists in offering Africa's finest wildlife properties since 1996

OFFERING YOU THE REAL AFRICA
 Game Farms
 Lodges 🐾🐾 Shares

We can offer you unique options in South Africa, Botswana, Mozambique and Zambia

Craig McKenzie +27 (0)82 800 0257
wildnet africa.com

FOR SALE

Botswana
 Tuli Block, traversing 10,000 hectares of prime game reserve.
 Shares for R3-million.

Mozambique
 Bordering the Kruger National Park. 36,000 hectares.
 Shares for private lodge sites R2-million.

South Africa
 Lowveld, full ownership within 24,000-hectare game reserve.
 R23-million.

Zambia
 Livingstone, private game farm. 1,000 hectares.
 US\$1.2-million.

Kiwinet

"The Suspended Four-Poster"

Created 16 years ago by Kiwinet, the distinctive design and quality revolutionised the mosquito net industry.

Tel: +27 28 341 0209 | info@kiwinet.co.za | www.kiwinet.co.za
 36 Daneel Street, STANFORD, 7210 | SOUTH AFRICA



RHINO ROAD MAP

It is easy to throw up one's hands and cry, 'This is awful, rhinos are doomed and there is nothing we can do!' Please don't. For as much as the cruelty and greed underlying the illegal trade in rhino horn is undeniable, there are many people around the world who are working so hard to ensure that rhinos have a future in the wild. And they are making a difference. No doubt the challenges that lie ahead are formidable, but if we tackle the problem areas, progress can be achieved.

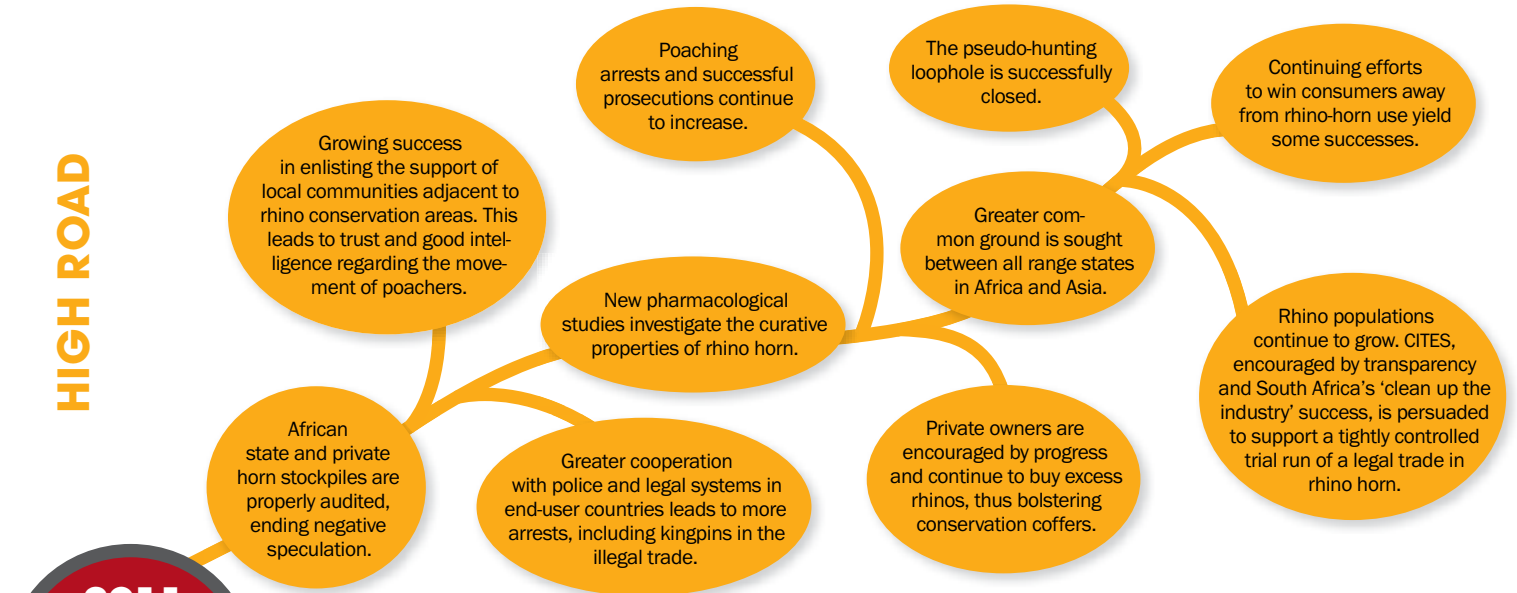
The scenarios illustrated here are not offered as sure-fire blueprints for disaster or success. Nor are the factors and variables exhaustive. The Low Road of a losing battle against poaching and the continuation of pseudo-hunting will almost certainly lead to an eventual decline in

rhino numbers. On the other hand, there are no silver bullets to ensure a High Road success. But, if a multifaceted approach combining effective policing and prosecution, international cooperation, consumer engagement strategies and possibly (if the pro-trade lobby can convince the Parties of CITES) even a carefully controlled trial to test the consequences of a legal trade can win out, then Africa may well continue to cite rhinos as one of the conservation success stories of modern times.

Hopefully this issue of *Africa Geographic* informs you as much as it has us, and will encourage each one of you to put your efforts behind following the long and winding path of the High Road - the Low Road is not an option.

AG

HIGH ROAD



LOW ROAD



FOR SALE

AFRICA'S FINEST WILDLIFE PROPERTIES

'THE ULTIMATE'
WILDLIFE PROPERTY
shares for sale

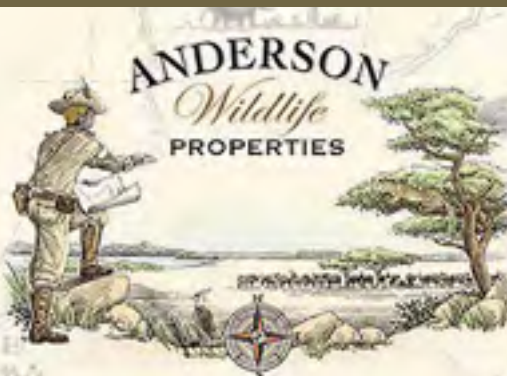


- 5 star private game lodge
- 38,000 hectares traversing, 500ha free-hold title land
- Perennial river site
- 5 luxurious en-suite chalets (10 beds)
- Main lodge- lounge/dining room/bar/tv room/kitchen/pool/deck/boma
- Fully managed big 5 game reserve
- App.1000m² under roof
- 2.5hrs from JHB
- Price POA



"Big 5" Wildlife Properties

Land & Luxury Safari Lodges within the Greater Kruger National Park - Timbavati, Klaserie, Sabi Sands, Umbabat, the Waterberg and Indian Ocean Islands.



Tel: +27 (11) 656 2041
Peter: +27 (82) 900 2024
Shaun: +27 (83) 257 1817
E-mail: peter@awpsa.co.za
E-mail: shaun@awpsa.co.za
www.andersonwildlifeproperties.co.za
Sandton, South Africa



SENSITIVE LODGE & CONCESSION OPPORTUNITIES ARE NOT LISTED OR ADVERTISED ON OUR SYSTEM. CONTACT US DIRECT FOR MORE INFORMATION.

Out of the Ordinary[®]



3 areas of expertise 1 out of the ordinary approach 1 name

At Investec our can-do approach in the areas of Specialist Banking, Wealth & Investment and Asset Management enables us to turn challenges into opportunity. Using entrepreneurial energy, we strive to meet your financial needs and deliver distinctive performance.

www.investec.com



Specialist Banking / Asset Management / Wealth & Investment

Australia Botswana Canada Hong Kong India Ireland Mauritius Namibia South Africa Switzerland Taiwan United Kingdom & Channel Islands United States

Investec Limited and its subsidiaries, including Investec Bank Limited - 1969/004763/06, registered credit providers and authorised financial service providers. Cape Town 021 416 1000 Durban 031 575 4000 Johannesburg 011 286 7000 Pretoria 012 427 8300