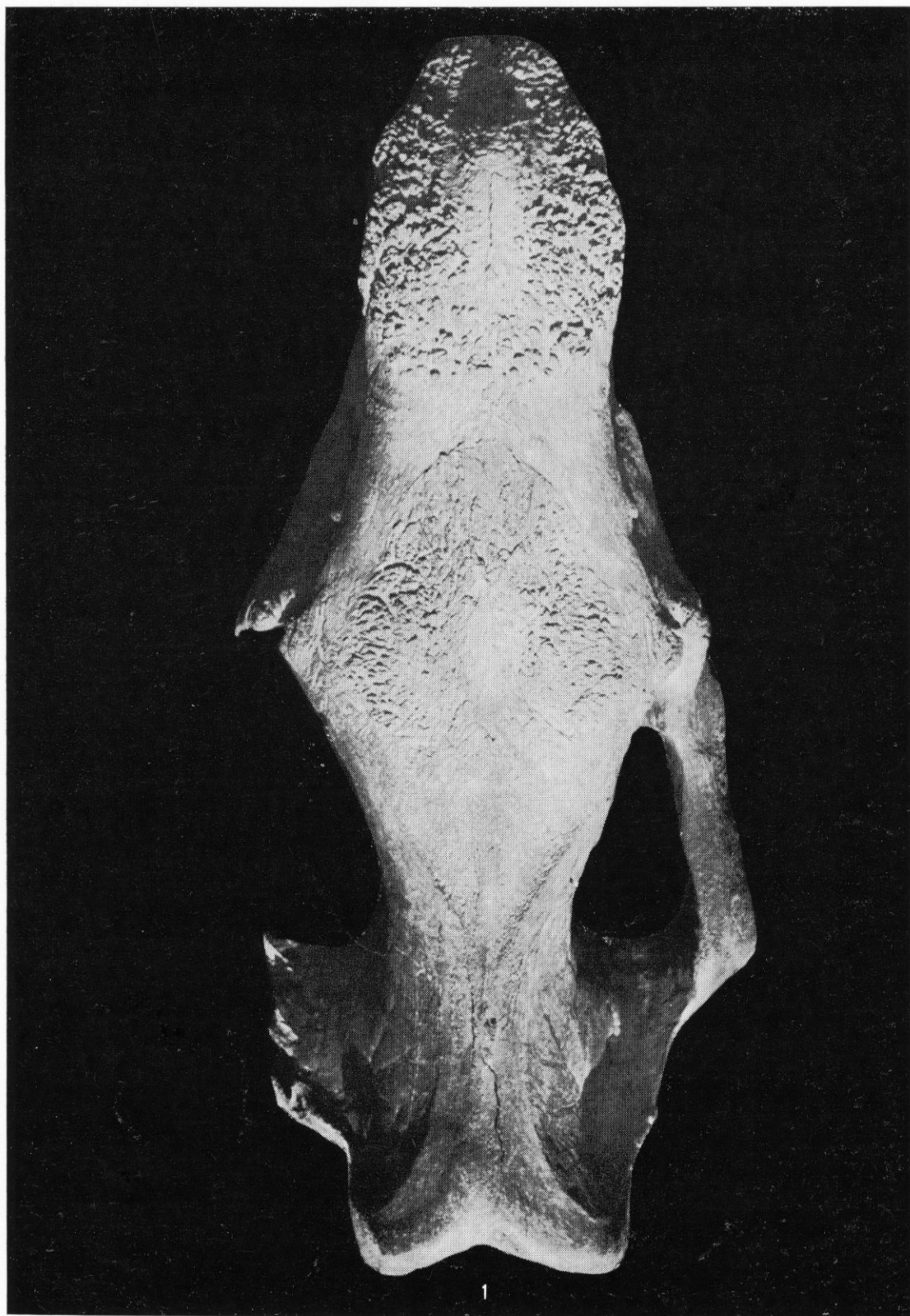


Pl. I

1 — Skull, dorsal view (diminished to ca 1/4)

Phot. by G. Jakubowski



M. BORSUK-BIAŁYNICKA, G. JAKUBOWSKI — The Skull of *Dicerorhinus mercki* (Jäger)

Pl. II

1 — Skull, lateral view (ca 1/4)

Phot. by G. Jakobowski

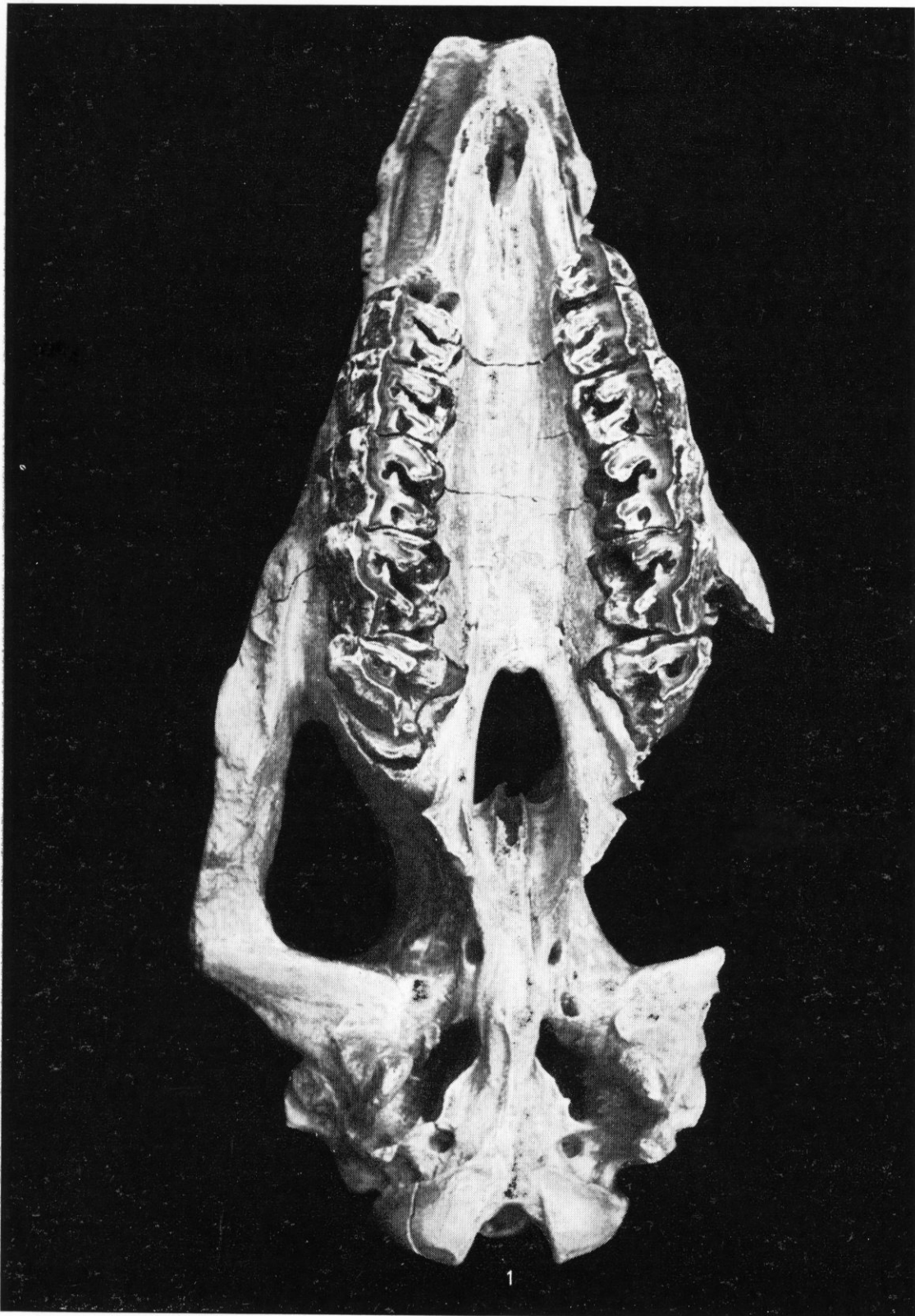


M. BORSUK-BIAŁYNICKA, G. JAKUBOWSKI — The Skull of *Dicerorhinus mercki* (Jäger)

Pl. III

1 — Skull, ventral view (ca 1/4)

Phot. by G. Jakubowski

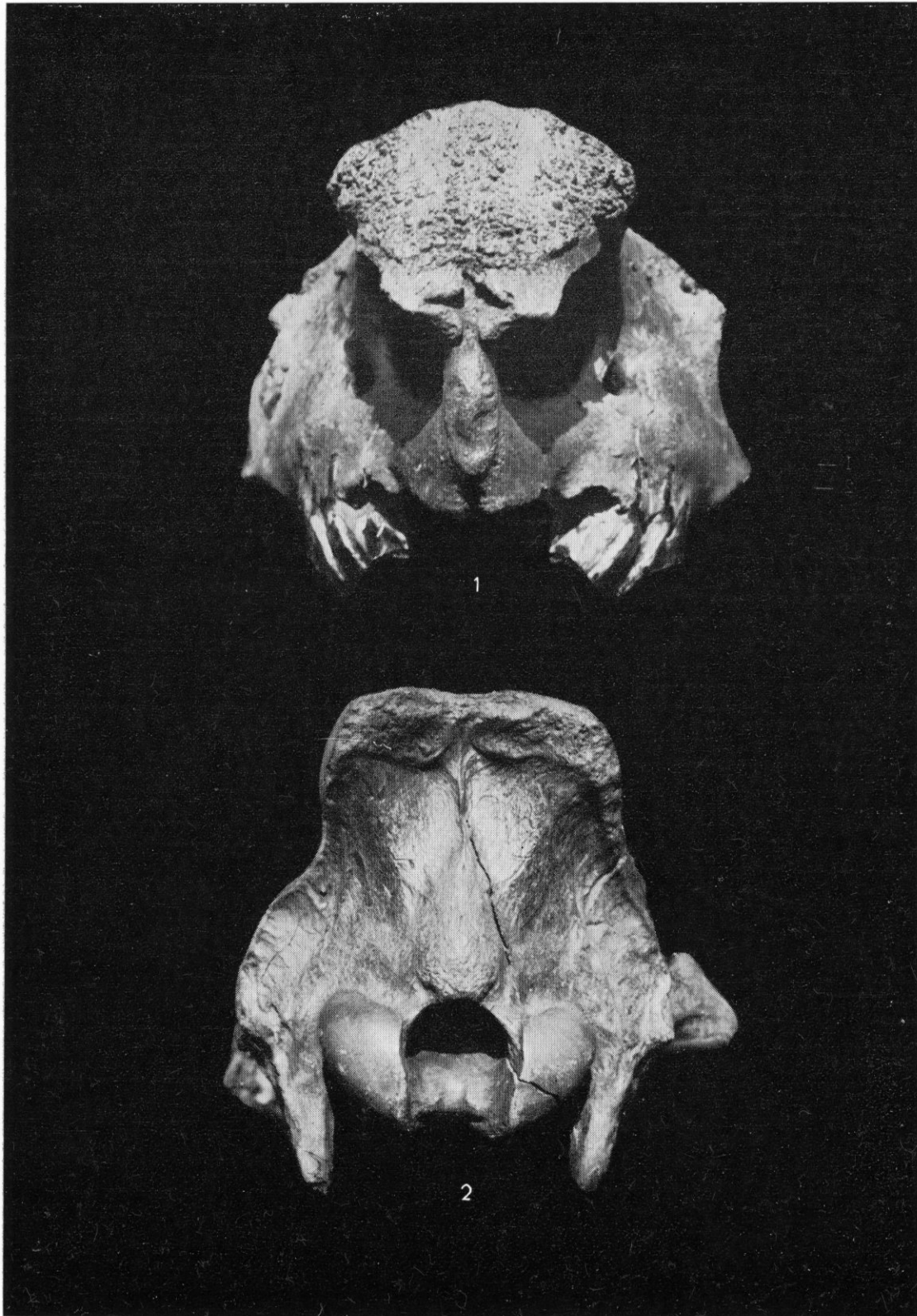


M. BORSUK-BIAŁYNICKA, G. JAKUBOWSKI — The Skull of *Dicerorhinus mercki* (Jäger)

Pl. IV

- 1 — Skull, anterior view (ca 1/4)
- 2 — Skull, posterior view (ca 1/4)

Phot. by G. Jakubowski

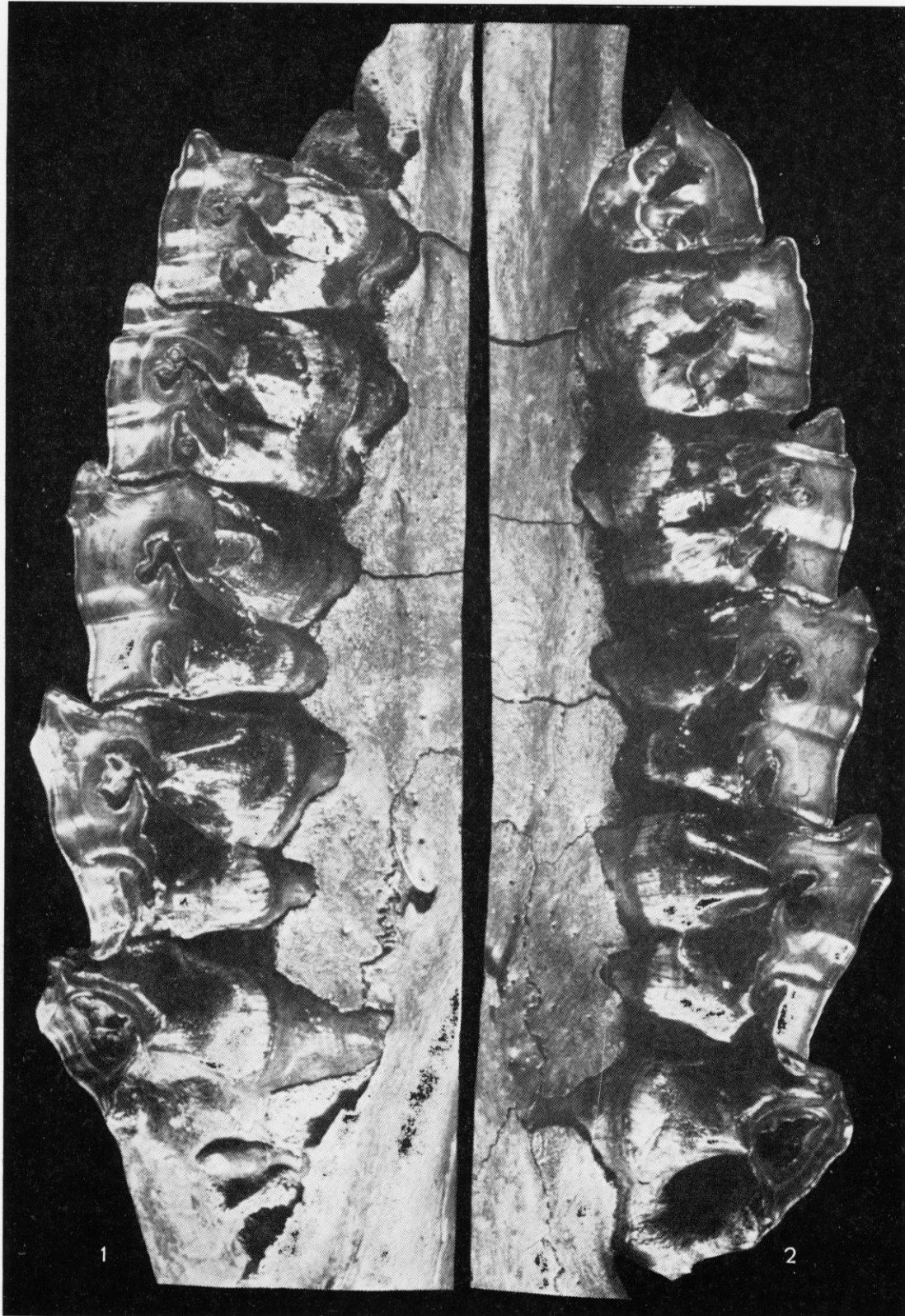


M. BORSUK-BIAŁYNICKA, G. JAKUBOWSKI — The Skull of *Dicerorhinus mercki* (Jäger)

Pl. V

- 1 — Teeth P³—M³ of the right jaw, seen from the wear surface (ca 1/2)
2 — Teeth P²—M³ of the left jaw, seen from the wear surface (ca 1/2)

Phot. by M. Malachowska-Kleiber



M. BORSUK-BIAŁYNICKA, G. JAKUBOWSKI — The Skull of *Dicerorhinus mercki* (Jäger)