

## Explanation of the Plates.

## Plate I.

*Hyæna ultima.*

- Fig. 1. Right upper  $P_1$ , inner view, nat. size.  
 Fig. 2. Ditto, outer view, nat. size.  
 Fig. 3. Ditto, lower view, nat. size.

*Stegodon sinensis.*

- Fig. 4. Left lower  $M_3$ , outer view, nat. size.  
 Fig. 5. Ditto, upper view, nat. size.

## Plate II.

*Stegodon orientalis.*

- Fig. 1. Left lower  $Mm_1$ , inner view, nat. size.  
 Fig. 2. Ditto, upper view, nat. size.  
 Fig. 3. Right upper  $M_2$ , inner view, nat. size.  
 Fig. 4. Ditto, lower view, nat. size.

## Plate III.

*Stegodon orientalis.*

- Fig. 1. Right upper  $M_3$ , inner view, nat. size.  
 Fig. 2. Ditto, lower view, nat. size.  
 Fig. 3. Right lower  $M_2$ , upper view,  $\times \frac{2}{3}$ .

## Plate IV.

*Stegodon orientalis.*

- Fig. 1. Right lower  $M_2$ , inner view,  $\times \frac{2}{3}$ .

*Stegodon ganesa.*

- Fig. 2. Left lower  $M_3$ , the original specimen of FALCONER & CAUTLEY's figs. 6 & 6-a, Pl. XXV-a, Fauna Antiqua Sivalensis; inner view,  $\times \frac{1}{2}$ .  
 Fig. 3. Ditto, upper view,  $\times \frac{1}{2}$ .

## Plate V.

*Aceratherium blanfordi* var. *hipparionum*.

- Fig. 1. Right ramus of mandible, which  $M_1$  and  $M_2$ ; outer view,  $\times \frac{2}{3}$ .  
 Fig. 2. Ditto, upper view,  $\times \frac{2}{3}$ .

*Rhinoceros plicidens.*

- Fig. 3. Left lower  $M_1$ , inner view, nat. size.  
Fig. 4. Ditto, upper view, nat. size.

*Rhinoceros sinensis.*

- Fig. 5. Left upper  $M_2$ , lower view, nat. size.  
Fig. 6. Posterior lobe of right lower  $M_1$ , upper view, nat. size.

Plate VI.

*Proboscelaphus watasei.*

- Fig. 1. Skull and mandible, viewed from left side,  $\times \frac{1}{2}$ .  
Fig. 2. Ditto, viewed from right side,  $\times \frac{1}{2}$ .  
Fig. 3. Skull, viewed from lower right side,  $\times \frac{1}{2}$ .

Plate VII.

*Proboscelaphus watasei.*

- Fig. 1. Right upper  $M_1$  and  $M_2$ , viewed from upper right side, to show the presence of three roots to each molar; nat. size.  
Fig. 2. Skull, upper view,  $\times \frac{2}{3}$ .  
Fig. 3. Right ramus of mandible, outer view,  $\times \frac{2}{3}$ .  
Fig. 4. Ditto, upper view,  $\times \frac{2}{3}$ .

*Proboscelaphus liodon.*

- Fig. 5. Right upper  $M_1$ , outer view, nat. size.  
Fig. 6. Ditto, inner view, nat. size.  
Fig. 7. Ditto, lower view, nat. size.  
Fig. 8. Right lower  $D_1$ , upper view, nat. size.

Plate VIII.

*Buffelus* sp. b.

- Fig. 1. Right ramus of mandible, upper view,  $\times \frac{2}{3}$ .  
Fig. 2. Ditto, inner view,  $\times \frac{2}{3}$ .  
Fig. 3. Ditto, outer view,  $\times \frac{2}{3}$ .  
Fig. 4. Right upper Molars, inner view, nat. size.  
Fig. 5. Ditto, lower view, nat. size.

Plate IX.

*Bibos geron.*

- Fig. 1. Left upper  $M_2$ , inner view, nat. size.

- Fig. 2. Ditto, outer view, nat. size.  
Fig. 3. Ditto, lower view, nat. size.

*Buffelus* sp. a.

- Fig. 4. Left ramus of mandible, with  $D_3$ ,  $D_4$  and anterior lobe of  $M_1$ ; inner view, nat. size.  
Fig. 5. Ditto, upper view, nat. size.

## Plate X.

*Bibos gcran.*

- Fig. 1. Left ramus of mandible, outer view,  $\times \frac{2}{3}$ .  
Fig. 2. Ditto, inner view,  $\times \frac{2}{3}$ .  
Fig. 3. Ditto, upper view,  $\times \frac{2}{3}$ .



5



Takura Photo.



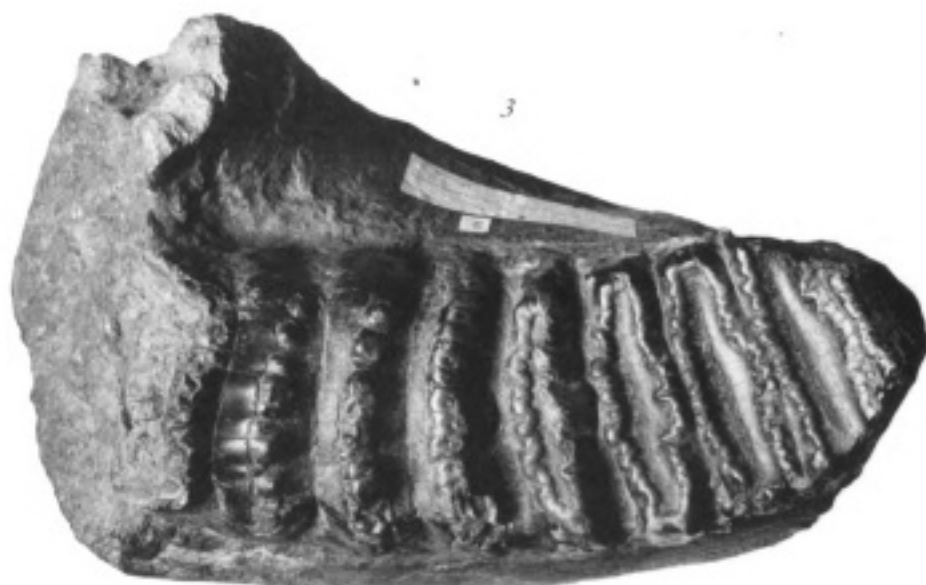
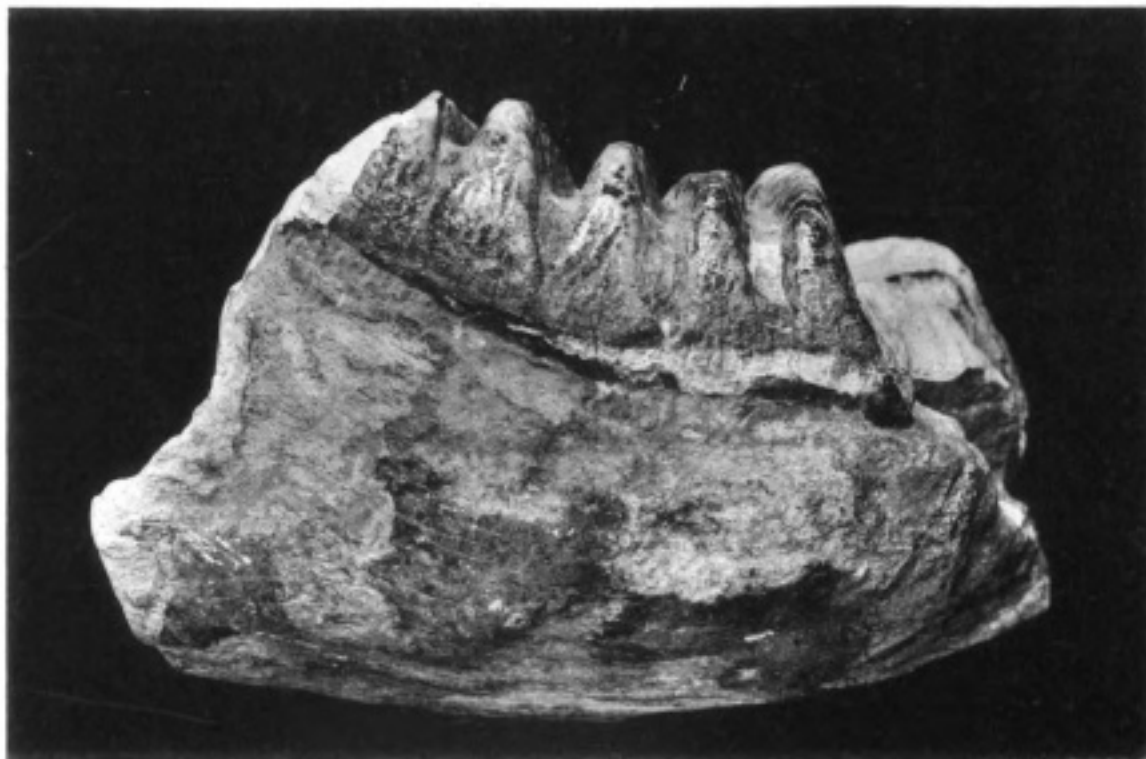


Takuma Photo.

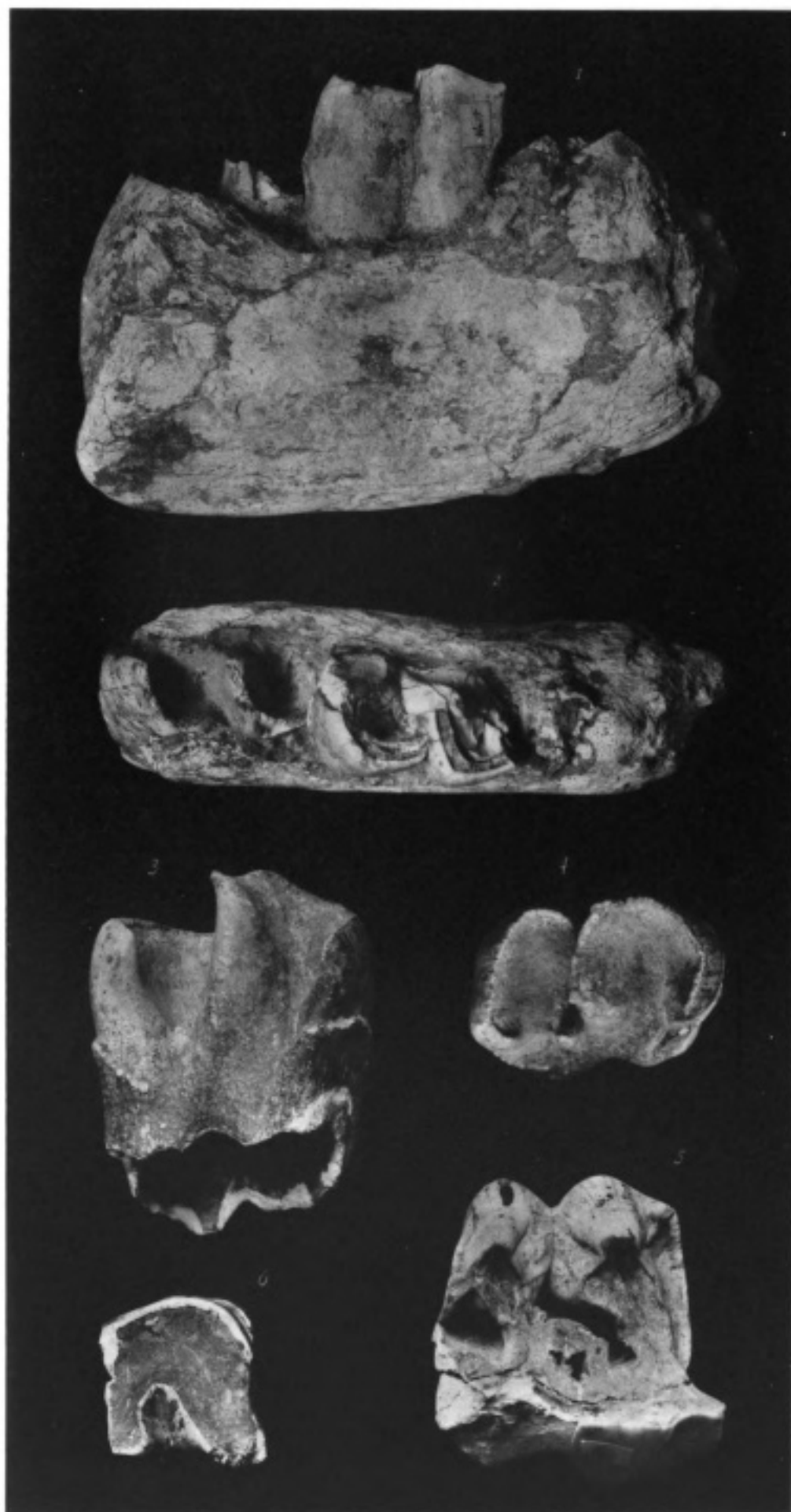


Tanaka Photo.





THOMAS PHOTO.

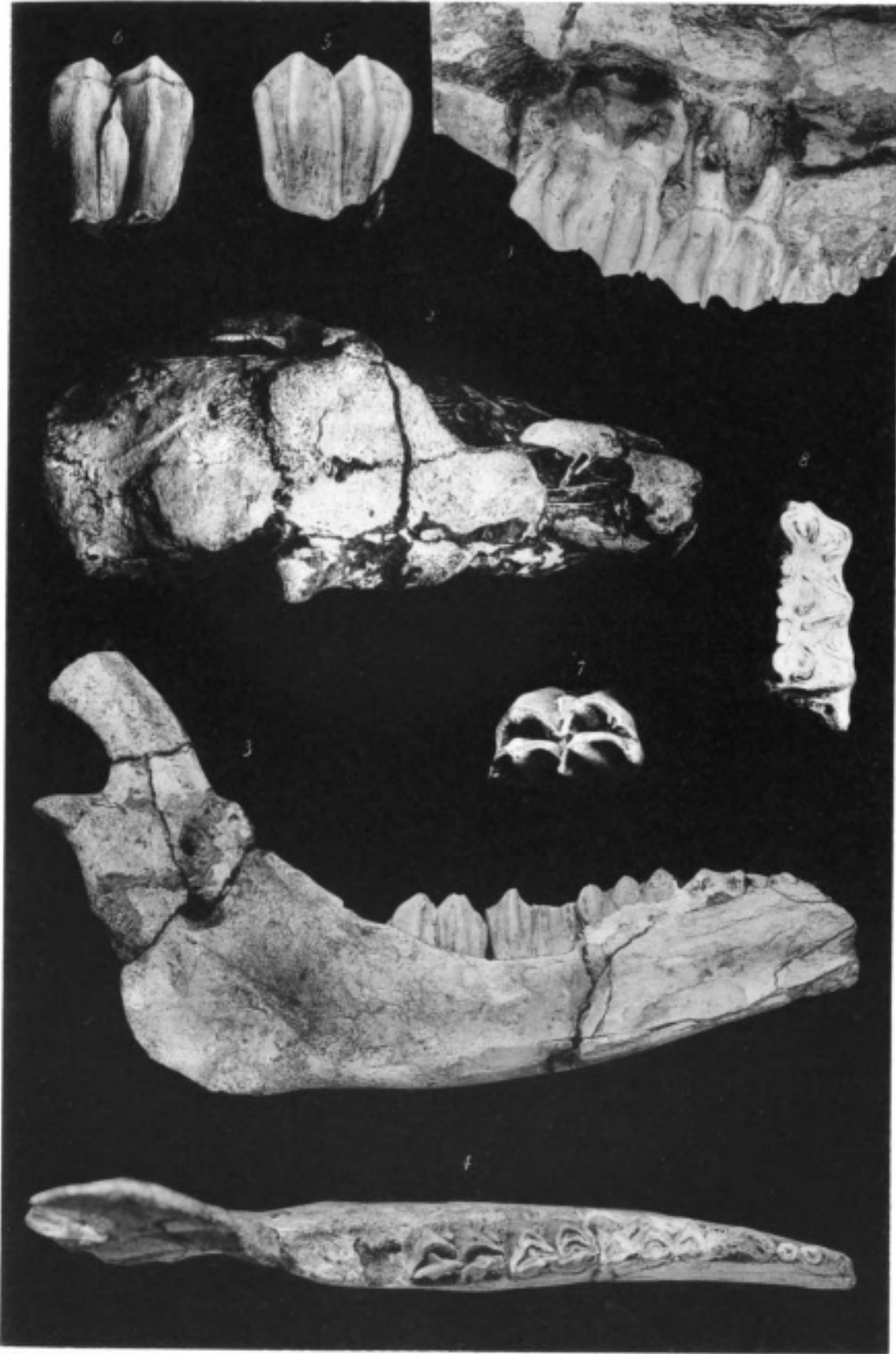


Taken Photo.

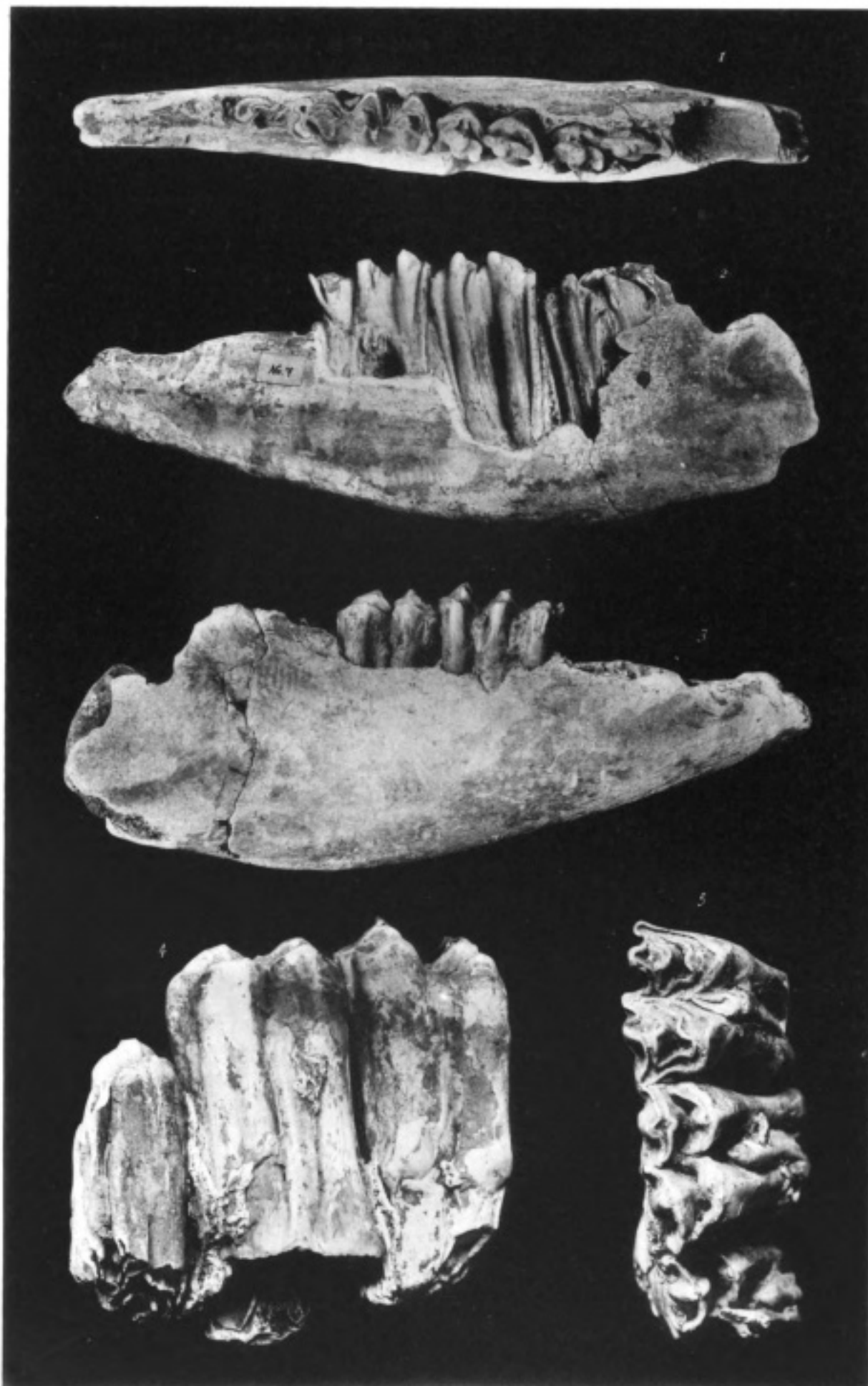




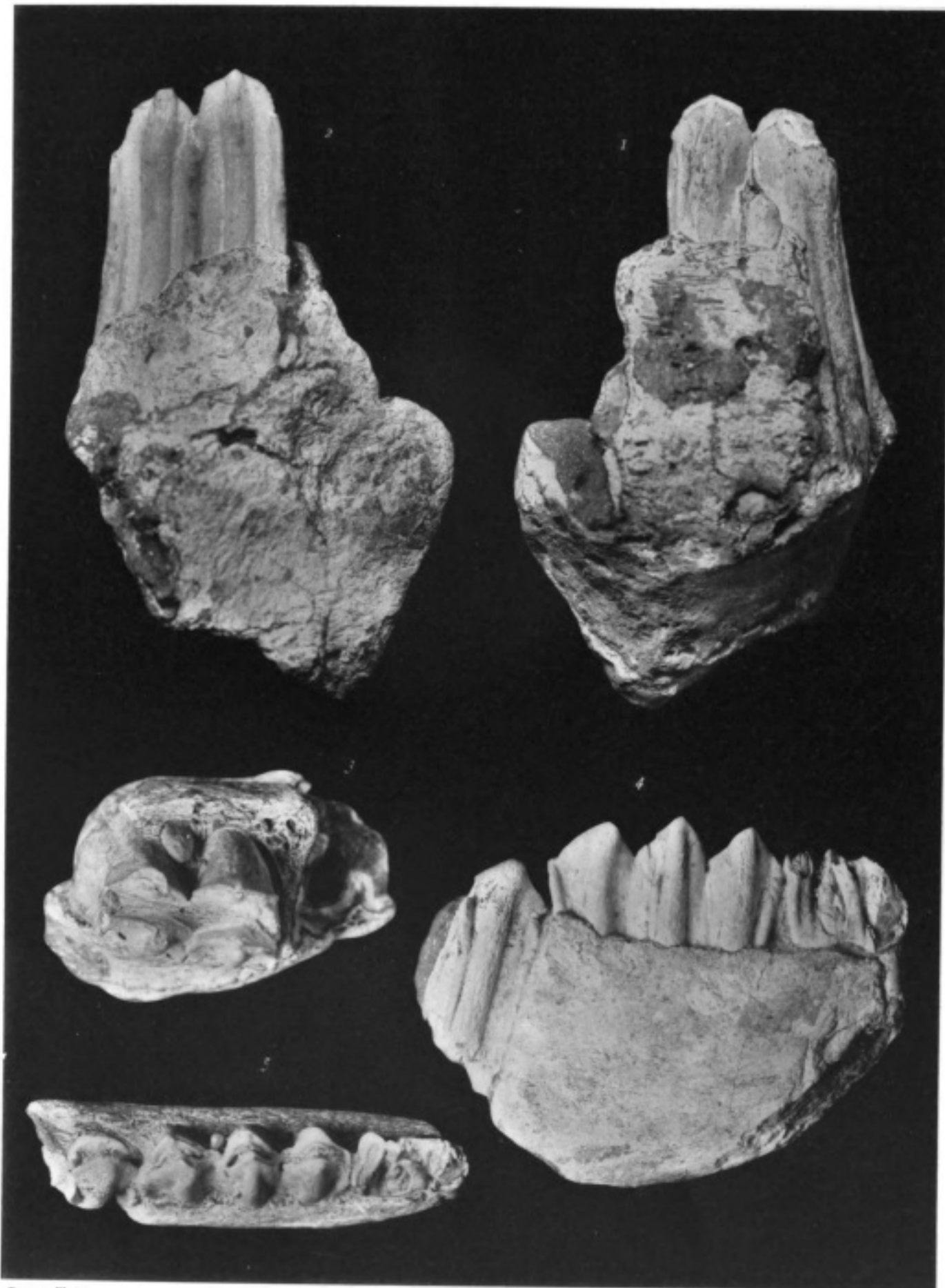
Tuzumi Photo.



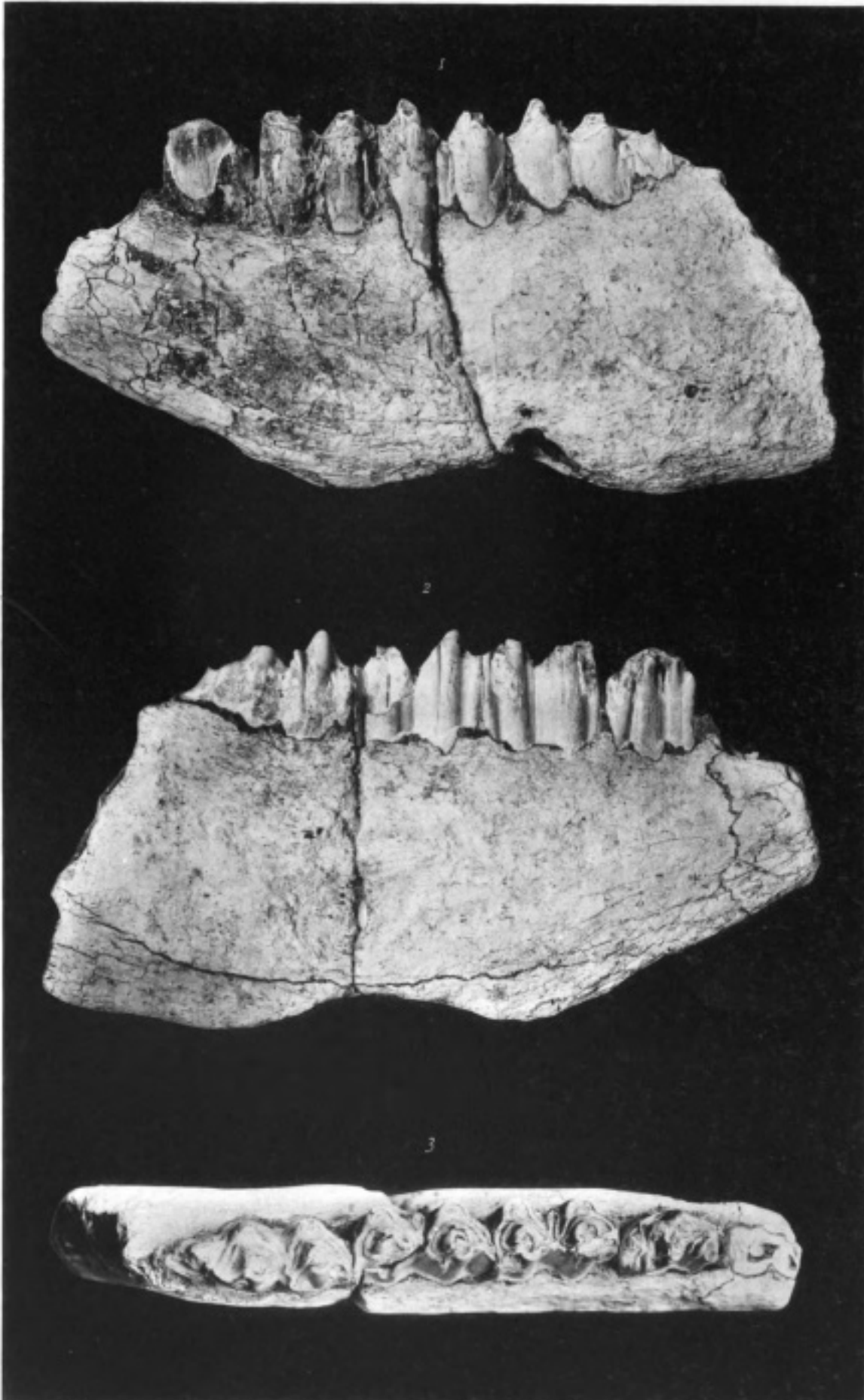
Truett Photo.



Tanaka Photo.



Tracery Photo.



Tanaka Photo.