

# RHINO GLOBAL CAPTIVE ACTION PLAN WORKSHOP

By Thomas J. Foose

A Global Captive Action Plan Workshop for Rhino will occur at the London Zoo 9-10 May 1992 immediately after the Sixth World Conference on Breeding Endangered Species on the Isle of Jersey.

The purpose of this Workshop is to provide strategic guidance for intensive management techniques to threatened taxa in these groups. As populations of many of these taxa are reduced and fragmented in the wild, more intensive management becomes necessary for their survival and recovery. This intensive management may include, but is not limited to, captive breeding.

Therefore, the Workshop will formulate recommendations about which taxa are in need of various kinds of intensive management attention both *ex situ* and *in situ* with which the captive community can realistically assist. The kinds of attention include:

(A) Population and Habitat Viability Assessment and Conservation Management Plan (PHVA/CMP) Workshops.

(B) Intensive (captive-type) protection and management in the wild.

(C) *In situ* and *ex situ* research where the captive community can reasonably assist, e.g. taxonomic clarification, some survey support.

(D) Captive propagation programs that sooner or later hopefully can be linked to interactions with wild populations.

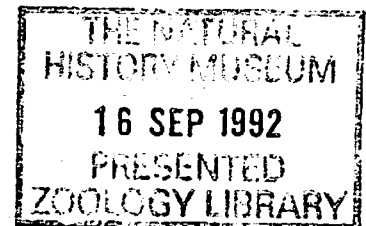
(E) Experimental re-introduction projects.

In terms of captive propagation, this Global Action Plan Workshop would include consideration of how the various Regional programs for rhino would interact and combine to form truly global efforts. An important aspect would be establishment of target population size goals (i.e. how many rhino to ultimately try to maintain) on a global basis and in each of the regions. These target population goals will be largely determined by demographic and genetic goals adopted for the program. The Workshop will also attempt to recommend responsibilities for captive programs might best be distributed among organized Regions of the global captive community. Finally, there will be an attempt to initiate integration of the Regional

Propagation Programs into Global Programs.

While the emphasis in Global Captive Action Plans is on *ex situ* activities, the Workshop will also consider how to more strategically develop and coordinate *in situ* conservation activities by zoos, especially financial support for field efforts. In particular, there will be an attempt (1) to identify where and how the captive community can assist with transfer of intensive management information and technology; and (2) to develop priorities for the limited financial support the captive community can provide for *in situ* conservation (e.g. adopt-a-protected-area programs).

Participants for the Workshop are all International and Regional Studbook Keepers and Species Coordinators for each of the rhino taxa, African and Asian. It is also considered important that representatives of the management authorities in major countries of origin of the various rhino be involved if possible. A number of field conservationists will be at the Jersey Conference and hopefully can attend the Global Captive Action Plan Workshop.



*Mohd Khan Bin Momin Khan, Director General for Wildlife and National Parks in Malaysia, reports the completion of their second rhino facility (pictured above), to which five Sumatran rhinos have been transferred successfully. Adjoining this facility is a ten square mile fenced portion of the Sq. Dusun Wildlife Reserve. Construction of a third Sumatran rhino facility is planned for this year.*