

PLATE VII.

- | | | | |
|---------|-------------------------------|---|----------|
| Fig. 1. | DICERATHERIUM SHAHBAZI, Pilg. | The left maxilla of a young individual, containing the last three milk molars. From the Gaj of Kumbhi, Bugti Hills. (Ind. Mus., No. C 298.) | Page 25. |
| „ 2. | „ „ „ „ | The left maxilla containing the last two molars. From the Gaj of Kumbhi, Bugti Hills. (Ind. Mus., No. C 297.) | Page 25. |
| „ 3. | „ „ „ „ | The same maxilla as Fig. 2, containing the last three premolars. From the Gaj of Kumbhi, Bugti Hills. (Ind. Mus., No. C 297 A.) | Page 25. |
| „ 4. | TELEOCERAS BLANFORDI, Lyd. | The 4th left upper premolar in a much worn condition, surface view. From the Gaj of the Bugti Hills. (Ind. Mus., No. C 311.) | Page 30. |
| „ 5. | „ „ „ „ | The 3rd premolar developed out of its alveolus in the maxilla of Fig. 6, surface view. (Ind. Mus., No. C 294.) | Page 30. |
| „ 6. | „ „ „ „ | The right maxilla of a young individual, containing the milk dentition surface view. From the Gaj of the Bugti Hills. (Ind. Mus., No. C 293.) | Page 30. |
| „ 7. | „ „ „ „ | The 4th right upper premolar wanting the posterior internal quarter, surface view. From the Gaj of the Bugti Hills. (Ind. Mus., No. C 295.) | Page 30. |

All figures natural size.

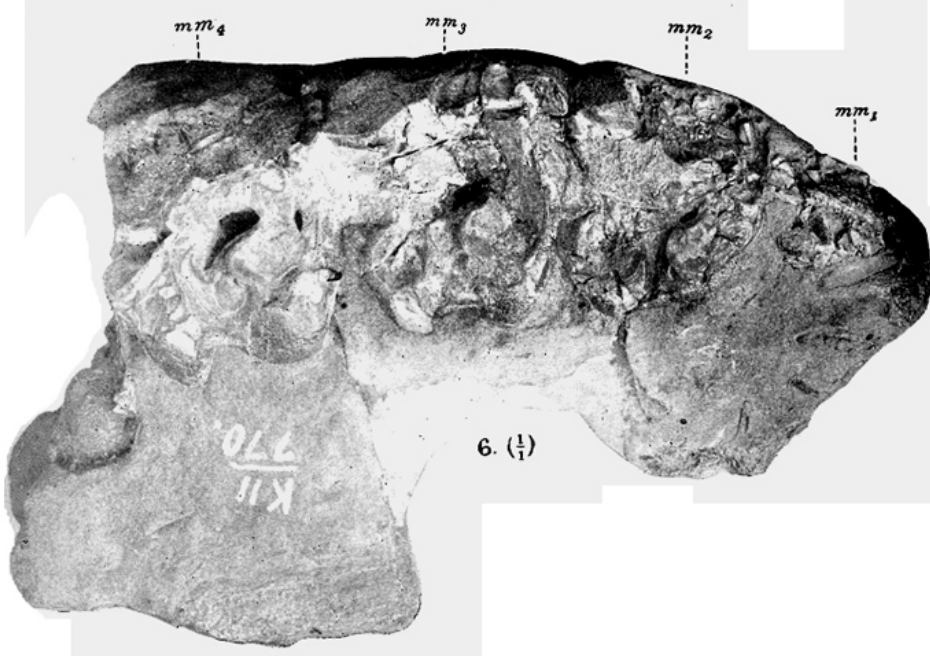
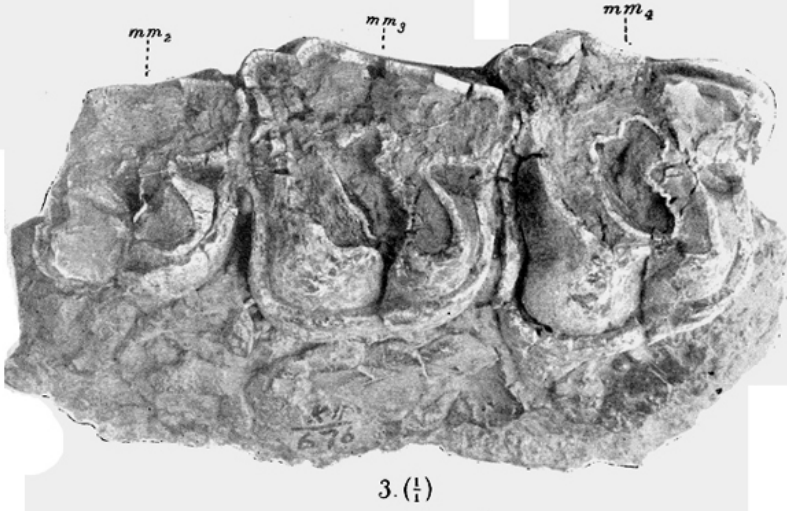
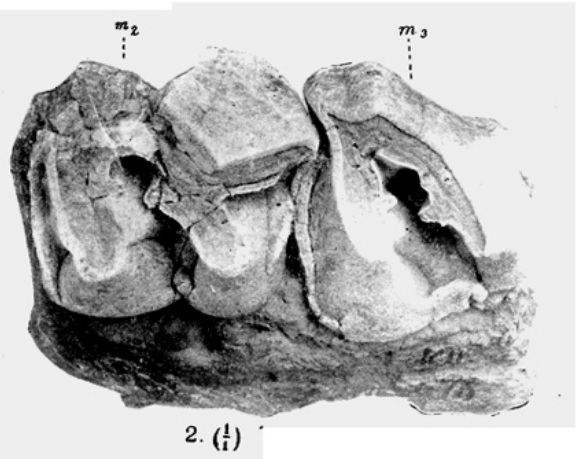
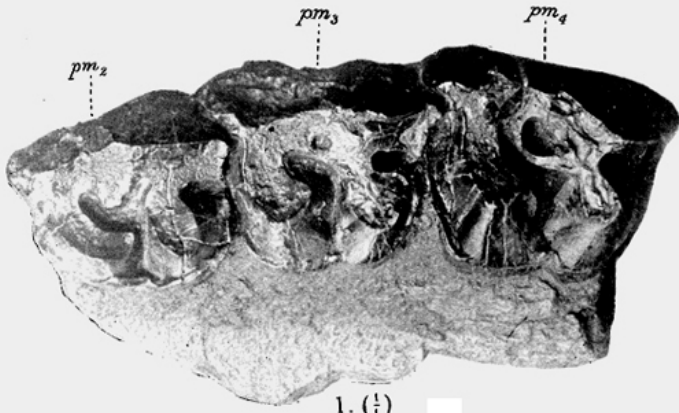


PLATE VIII.

- | | | | | | |
|---------|--------------|------------|-------|--|----------|
| Fig. 1. | ACERATHERIUM | BUGTIENSE, | Pilg. | 1st right upper molar, surface view. From the Gaj of the Bugti Hills. (Ind. Mus., No. C 278.) | Page 26. |
| ” 2. | ” | ” | ” | 2nd right upper molar of the same individual as Fig. 2, surface view. (Ind. Mus., No. C 280.) | Page 26. |
| ” 3. | ” | ” | ” | 3rd left upper molar, wanting the ectoloph, surface view. From the Gaj of Chur Lando, Bugti Hills. (Ind. Mus., No. C 283.) | Page 26. |
| ” 4. | ” | ” | ” | 3rd left upper molar, surface view. From the Gaj of Chur Lando, Bugti Hills. (Ind. Mus., No. C 182.) | Page 26. |
| ” 5. | ” | ” | ” | The last two left upper premolars surface view. From the Gaj of Chur Lando, Bugti Hills. (Ind. Mus., No. C 286.) | Page 27. |
| ” 6. | ” | ” | ” | The front three left upper premolars, surface view. From the Gaj of Chur Lando, Bugti Hills. (Ind. Mus., No. C 285.) | Page 27. |

All figures natural size.

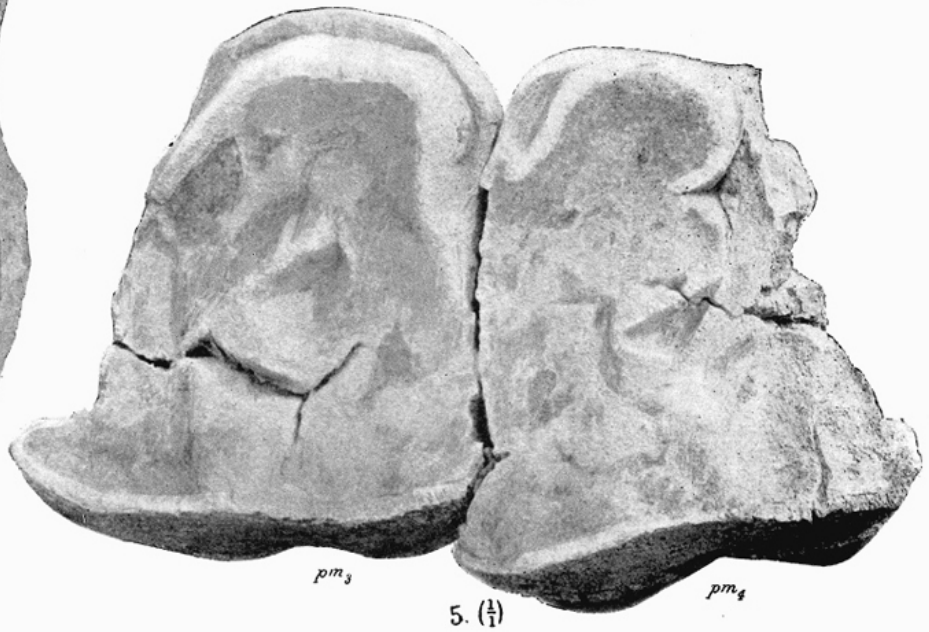
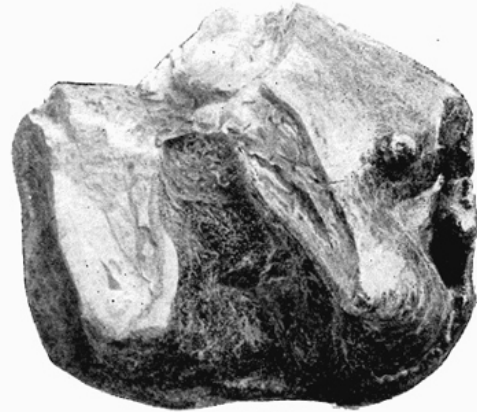
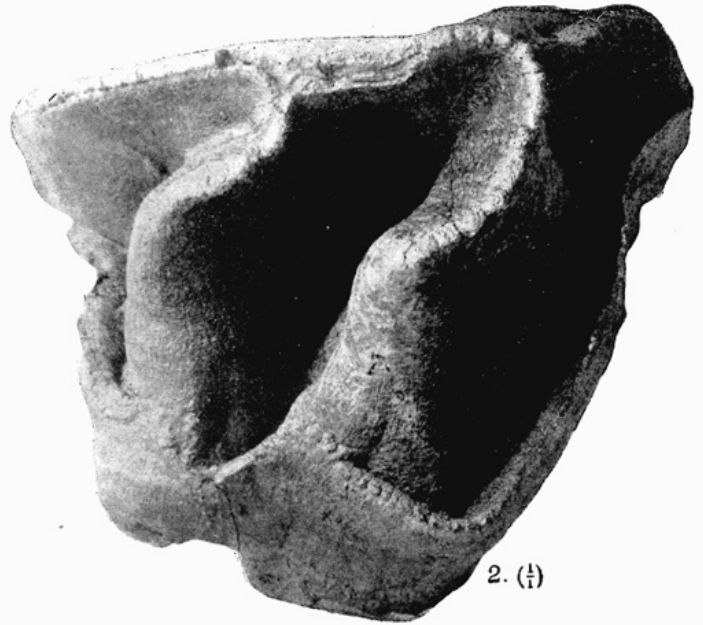
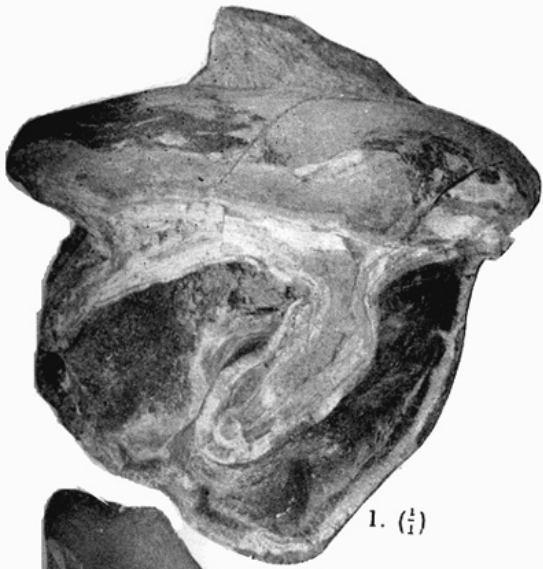
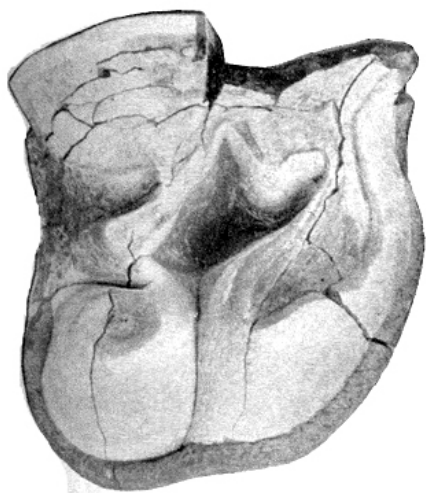


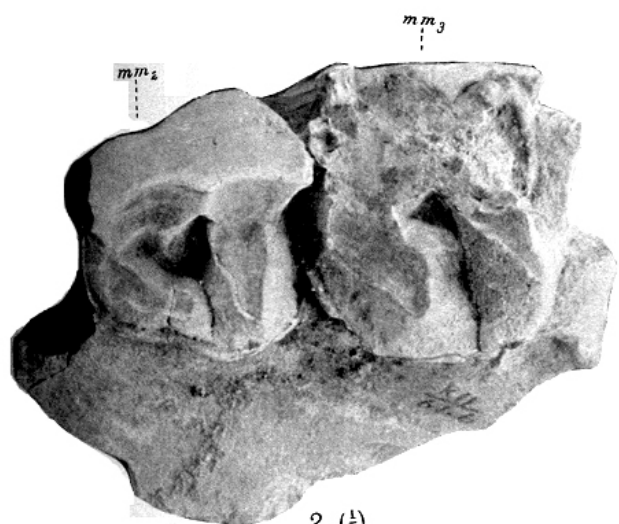
PLATE IX.

- | | | | |
|---------|-------------------------------|--|----------|
| Fig. 1. | ACERATHERIUM BUGTIENSE, Pilg. | The 3rd right upper premolar in an early stage of wear, surface view. From the Gaj of Chur Lando, Bugti Hills. (Ind. Mus., No. C 284.) | Page 27. |
| " 2. | " " " | The 2nd and 3rd left upper milk molars, surface view. From the Gaj of Chur Lando, Bugti Hills. (Ind. Mus., No. C 288.) | Page 27. |
| " 3. | " " " | The 3rd and 4th left upper milk molars, surface view. From the Gaj of Chur Lando, Bugti Hills. (Ind. Mus., No. C 287.) | Page 27. |
| " 4. | " " " | The left mandibular ramus containing the three molars, surface view. From the Gaj of Chur Lando, Bugti Hills. (Ind. Mus., No. C 289.) | Page 27. |
| " 5. | " " " | The 2nd left lower premolar from the mandible in fig. 4. (Ind. Mus., No. C 290.) | Page 27. |

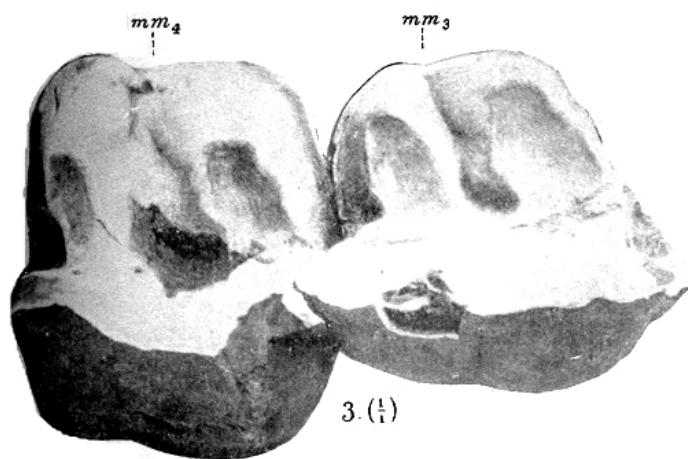
All figures natural size.



1. ($\frac{1}{2}$)



2. ($\frac{1}{2}$)



3. ($\frac{1}{2}$)



4. ($\frac{1}{2}$)



5. ($\frac{1}{2}$)

PLATE X.

Fig. 1, 1a. ACERATHERIUM BUGTIENSE, Pilg. The same left mandibular ramus figured in Plate IX Fig. 4. 1, internal view, $\frac{2}{3}$ natural size.
1a, external view, $\frac{2}{3}$ natural size. (Ind. Mus., No. C 289.) Page 26.

All figures natural size except where otherwise indicated.



PLATE XI.

- Fig. 1. ACERATHERIUM GAJENSE, Pilg. The left maxilla containing the 1st molar and the last two milk molars, surface view. From the Gaj of the Bugti Hills. (Ind. Mus., No. C 291.) Page 28.
- „ 2. „ „ „ The 3rd premolar developed out of its alveolus in the maxilla of fig. 1, surface view. (Ind. Mus., No. 291.) Page 28.
- „ 3. „ „ „ Last two left upper milk molars. From the Gaj of the Bugti Hills. (Ind. Mus., No. C 296.) Page 28.
- „ 4. TELEOCERAS FATEHJANGENSE, Pilg. The palate showing the molars and the last premolar, surface view. From the Gaj near Fatehjang. (Ind. Mus., No. C 312.) Page 32.

All figures natural size.

