

**Indonesian Rhino Conservation Program
Program Konservasi Badak Indonesia**

ANNUAL REPORT 2006



Editors:

Ir. M. Waladi Isnain - IRCP Program Manager

Dadan D. Subrata - IRCP Administrator and Database Supervisor

Dr. Nico J. van Strien - IRF SE Asia Coordinator

Cover: Sumatran rhino, Rosa, in SRS. (Courtesy of Cyril Ruoso and SRS Way Kambas).

TABLE OF CONTENTS

<i>EXECUTIVE SUMMARY</i>	2
<i>INTRODUCTION</i>	3
<i>PROGRESS REPORT 2005</i>	6
<i>RHINO STATUS AND DISTRIBUTION</i>	9
<i>ILLEGAL ACTIVITIES ENCOUNTERED</i>	16
<i>CONCLUSIONS</i>	21
<i>RECOMMENDATIONS</i>	23
<i>QUARTERLY DATA</i>	24 - 26
<i>PATROL DATA 2005</i>	28 - 52
<i>PROGRAM PERSONNEL</i> <i>PERSONNEL PERFORMANCE - 2006</i>	53 - 55
<i>PROGRAM PERSONNEL</i>	56

EXECUTIVE SUMMARY

The decline of the Sumatran and Javan rhino has been going on for a long time. The Javan rhino for example was eliminated from Malaysia in the 1930's, while the decline of Sumatran rhino was probably 50% during the last decade. The total world population of Sumatran rhino is estimated at about 300 and the species will become extinct in the next decade if there is no appropriate and serious protection and management.

The rhino's decline in South East Asia is due to a combination of reduction in habitat and overexploitation, mostly by poaching for the horn. Even now poaching pressure continues to be high in Indonesia, hence there is a need to emphasize anti-poaching activities in the Rhino Conservation Program in this country.

The rhino is subject to poaching pressure both from hunters with firearms and from trappers who use wire snares and other traps that maim and kill the animals. The decline in range and numbers in Sumatra is attributed chiefly to fragmentation of its habitat through indiscriminate forest clearance and to poaching, stimulated by the illegal trade in horns, hooves and other parts.

The **Indonesian Rhino Conservation Program (IRCP)** [*Program Konservasi Badak Indonesia (PKBI)*] integrates governmental and non-governmental partners: the Directorate General of Protection and Nature Conservation (PKA), Ministry of Forestry and Plantations, International Rhino Foundation (IRF), Asian Rhino Specialist Group (AsRSG) and Yayasan Mitra Rhino (YMR). The MoU signed in Jakarta on 14 January 1998. The IRCP is a continuation of the UNDP/GEF program "Conservation Strategy for Rhinoceros in South East Asia" that started in April 1995. The MOU renewed on 2 October 2003 in Jakarta for the next five years, and currently running till 31 December 2008.

The program entails a series of approaches that include: (a) wild population protection by intensive patrolling of areas to detect traps and arrest intruders; (b) more intensive surveys and monitoring of the rhino populations throughout the core rhino areas; (c) intelligence operations to assist in the apprehension of poachers and to identify the routes used for the horn trade; (d) establishment of a rhino database system using Geographic Information System (GIS) techniques.

The involvement of a large number of field personnel makes the IRCP program very costly. Therefore, it is important to develop a simultaneous plan for sustainable funding of the Rhino Conservation Program.

INTRODUCTION

Background

A Population and Habitat Analysis conducted in November 1993 in conjunction with the IUCN SSC Asian Rhino Specialist Group (AsRSG) and Conservation Breeding Specialist Group (CBSG) revealed a significant decline in the numbers of Sumatran rhino in Indonesia. The estimates that emerged from the new data and more rigorous assessment was 215 – 319. Meanwhile, the previous estimate had been 420 – 875. The GEF project estimated, based on the assessment of total range and a summation of estimated local rhino numbers, that until June 1998 the population of Sumatran rhino in Bukit Barisan Selatan National Park (TNBBS) 28 – 40, in Way Kambas National Park (TNWK) 15 – 24, and in Kerinci Seblat National Park (TNKS) was 27 – 32.

In the year of 2004, the IRCP estimated the number of Sumatran rhino in TNBBS was about 60 – 85, in TNWK 20 – 27, and at TNKS 2 – 3 in TNKS. Since February 2005, no rhino's sign have been encountered in areas where RPU's operated in Kerinci Seblat National Park, and the field operations have since been terminated.

Although the Javan rhino population in Ujung Kulon National Park seems to be holding at about 50 – 60, the threat of poaching remains. Since 1980, the number of javan rhinos in Ujung Kulon has not increased, despite rigorous protection and only few cases of rhino poaching being discovered since. The stagnation of the Javan rhino population has become a matter of global concern

Saving the remaining population needs further alternatives. There should be a series of efforts to protect the remaining population by activating rhino patrols and strengthening anti-poaching activities, until poacher activity is reduced to the point of elimination and habitat destruction has stopped. Furthermore, new populations need to be established throughout the historic range in suitable secure habitats where the rhinos have been exterminated. Semi natural reproduction in sanctuary style centers may be an essential tool to achieve rapid expansion of numbers, until the world population has grown till at least 2500.

Objectives, Outputs, Targets and Outcomes

Objectives :

The main objective of the cooperation between the Directorate General of Forest Protection and Nature Conservation, International Rhino Foundation, Yayasan Mitra Rhino, and Asian Rhino Specialist Group is to contribute to the long-term viable conservation and management of Indonesian rhinos (the Javan rhino – *Rhinoceros sondaicus*, and the Sumatran rhino – *Dicerorhinus sumatrensis*) and their habitats in Java and Sumatra through collaboration and coordination for planning, funding, administration and implementation of Rhino Conservation Programs.

The Indonesian Rhino Conservation Program aims:

1. To enhance the capabilities of the Directorate General of Forest Protection and Nature Conservation and associated wildlife agencies to arrest and reverse the decline of rhinos due to poacher activity and habitat disturbance toward the National and global goal of recovery of viable populations of rhino species in Indonesia.
2. To enhance bio-diversity conservation in Indonesia through technical training preparation, operational support, and strategy for long term funding plans.
3. Local community involvements as active participate in rhino conservation efforts.

Outputs:

4. Establishment and operation of at least 15 Rhino Protection Units (RPUs) in Sumatra and Java.
5. More involvement of local people through recruiting into RPU personnel.
6. More accurate and reliable information on rhino distribution and population in Java and Sumatra based on facts finding of signs of rhino such as footprint, dung, wallows direct sighting and other, as survey and patrol conducted.
7. More accurate and reliable information on illegal activities within the National Park such as illegal poaching, forest encroachment, field crops, illegal fishing, and others.
8. Other information linked to the rhino conservation program in the National Park.

Targets:

1. Units of RPUs operational in Sumatra and Java.
2. Distribution of key populations of Sumatran and Javan rhino in Java and Sumatra established.
3. Methods, networks and “modus operandi” of poaching and rhino horn trade identified.
4. Effective law enforcement for rhino poaching cases and forest destruction and rhino poachers routinely convicted in Indonesia
5. To provide a safe and secure habitat for rhinos and other wildlife, free from poaching and forest encroachment.

Outcomes:

1. Enhancing the capabilities of the Directorate General of Forest Protection and Nature Conservation and associated wildlife agencies to arrest and reverse the decline of rhinos due to poacher activity and habitat disturbance toward the national and global goal of recovery of viable populations of rhino species in Indonesia.
2. Poacher activity will be reduced to the point of elimination within areas covered by the units as measured by numbers of traps and poachers detected by patrols and the numbers of rhino known to be lost.
3. Improved information on rhino numbers and distribution.
4. Improved management of the national Parks by authorities.
5. Benefits and incentives for local communities by employing them in the RPUs.

PROGRESS REPORT 2006

Progress:

The IRCP operates 16 anti-poaching units in three rhino areas in Sumatra and Java, Indonesia. Eight units or teams operating in BBS, five units in Way Kambas, and three units in Ujung Kulon National Parks.

Each RPU consist of four persons and is primarily an anti-poaching team that intensively patrols rhino/tiger areas to destroy traps and snares as well as to interdict or apprehended poachers. Although the basic unit is four persons, combined teams with additional personnel from the Park or from the police or other government agencies are formed when required. Especially when operating against a gang of illegal loggers large groups is needed for security. For intelligence operations, often-smaller teams or individual assignments are required

The leader of each RPU is a PHKA ranger, who has the authority to carry firearms and arrest suspected poachers. RPU's may arrest suspects in the act of committing crime. They must then, and as soon as possible, hand them over to a civil investigator item (to be formally confiscated by the park or police) as evidence, and they must prepare a crime report for the civil investigator. Beyond this point they have no further rights, but will be called as witness if the case is brought to court.

The other members of the RPU, including the field coordinators and administrators, have been recruited from local communities in the vicinity of the rhino areas in which the RPU operates.

Patrols and surveys are the RPU primary function. Patrolling is to locate and apprehend illegal intruders, deactivate traps, and investigate crime scenes. Surveying is to find and locate sign of rhino, tiger and other endangered wildlife.

Patrolling is primarily conducted on foot but in Way Kambas and Ujung Kulon part of patrols are by boat. The patrols vary in length from a few hours to a week. During patrols in rhino areas, rhino signs observed also noted but the primary goal is law enforcement and protection of the area and it's wildlife.

Surveying is also conducted on foot. The primary aim is to record rhino sign, but other wildlife species are also recorded. The information gathered is used to identify rhino areas, attempt to identify individuals, and gather other information. After each survey and patrol the team leader makes a written report to the Head of the National Park and the program HQ in Bogor.

In BBS, since 2004 the IRCP establishes and still operates a special mobile Intelligence and Law Enforcement Unit (ILEU) to assist the RPUs and the National Park in the detection and apprehension of poachers and to assist the prosecution of suspects till the time that the case is filed with the courts.

Project deliverables are detailed records of patrol activities, including the number of surveys, the distance traveled for each survey/patrol (distance walked) and the duration of the time spent in the field (hours in the field). These data are used to assess the Personnel Performance as the number of field days per-person per-month. The target for the performance is at least 15 days per-person per-month on patrol for each RPU. (See *Figure 1. General Performance Parameters*).

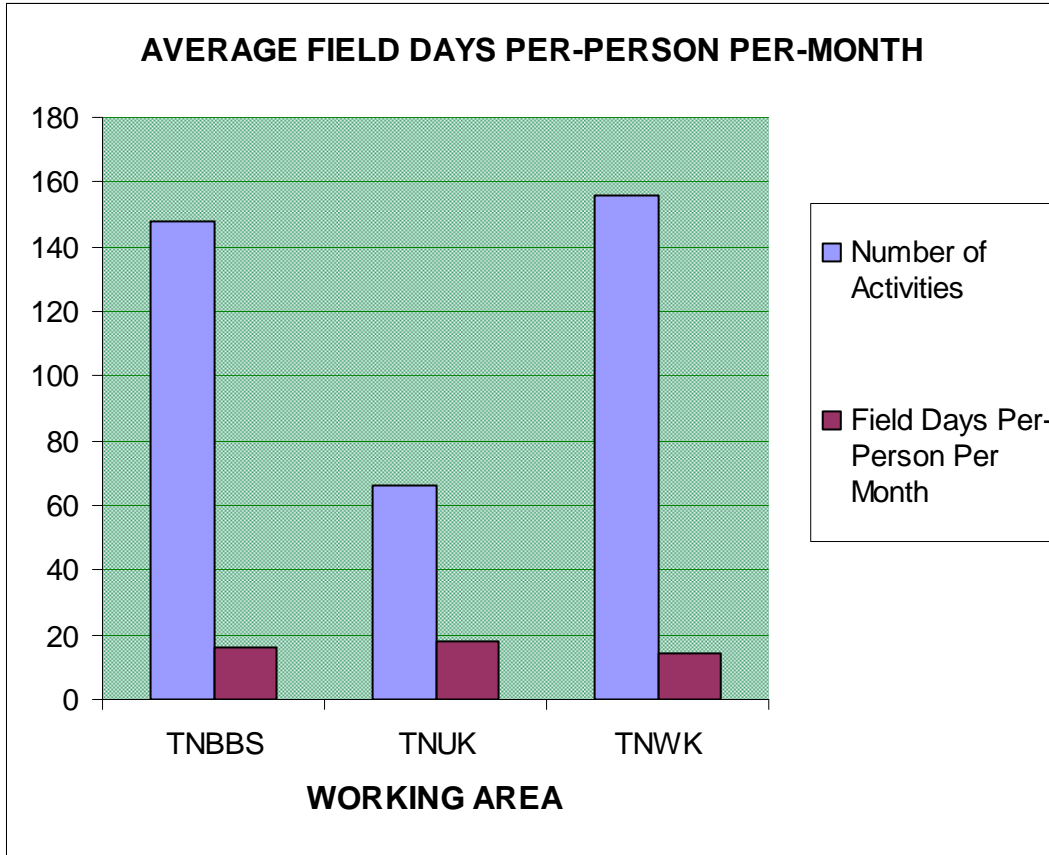


Figure 1 General Performance Parameter

Working Area	Number of activities	Number of Patrol/Survey	Number of Days	Distance walked (Km)	Field days per-person per-month
BBS	148	121	1.031,00	3,675.7	15.87
WK	156	88	458,00	2,756.69	14.07
UK	66	44	435,00	1,823.11	18.03
TOTAL all	370	253	1.924	8,255.5	Mean 15.99

In the year of 2006, Each RPU in BBS and Ujung Kulon performed better than the minimum target number of field days per-person per-month (15), while in Way Kambas they achieved slightly below the minimum target of field days.

Bukit Barisan Selatan National Park. A total of 121 surveys/patrols were conducted during the year, covering 3.675,7 km, consuming 1.031 team days (excluding other activities). The number of activities of the RPU was higher than in the previous year. However, the number of field days per-person per month of RPU personnel in this working area decreased (15.87), but slightly above the minimum target of field days per-person per-month. No rhino phenomena like “rosa’ discovered during the year. The teams patrolled twice for each month and number of days for each patrol is almost seven days.

The southern half of BBS is most intensively patrolled, as this is the core area for Sumatran Rhino and many of the disturbances and encroachments occur in this part of the Park. The northern half of BBS has only very few rhinos surviving. Therefore, the areas covered at least once a year to monitor the developments.

Way Kambas National Park. A total of 88 surveys/patrols were conducted during the year, covering 2,756.69 km, consuming 458 team days (excluding other activities). The number of field days per-person per-month has been below the target of 15 field days per-person per-month.

Many of the RPU activities in WK are short operations of less than a week, such as joint operations with NP to evict encroachers, intelligence, investigations on illegal trade and poaching, field patrols only for destroying traps intended for rhino and tiger, etc.

Ujung Kulon National Park. A total of 66 patrols/surveys has been conducted during the year, covering 1,823.11 Km’s length, consuming 435 team days (excluding other activities). Mostly the numbers of field days per-person per-month of the RPUs in Ujung Kulon are higher than the other areas, because of differences in the methods of calculation field days.

RHINO STATUS AND DISTRIBUTION

Outputs:

More accurate and reliable information on rhino distribution and population in Java and Sumatra based on facts finding of signs of rhino such as footprint, dung, wallows direct sighting and other, as survey and patrol conducted.

Progress:

Surveys and patrols are the RPU's primary function and are conducted on foot. The primary aim is to seek signs of rhino. The information gathered is used to identify all rhino areas, to identify individuals, and to gather information on the rhino's activities like feeding, wallowing, defecation, etc. Information on other large mammals is also collected during these surveys. At the end of each survey and patrol, the team leader makes a written report.

The type and number of location of rhino signs encountered is tabulated below.

Table 1. NUMBER OF RHINO SIGNS ENCOUNTERED IN 2006

Working Area	Number of locations of rhino signs had been encountered					
	Footprint	Wallow	Dung	Food	Other Signs	Direct Sighting
BBS	197	32	24	10	11	4
UK	190	31	23	13	1	2
WK	123	60	170	51	233	2

In BBS, during the 121 surveys/patrols in 2006, 278 independent sign of rhino were encountered including four sightings.

In Way Kambas, during the 88 surveys/patrols in 2006, 700 independent sign of rhino were encountered including two sightings.

In Ujung Kulon, during the 44 surveys/patrols in 2006, 260 independent sign of rhino were encountered including two sightings.

The **RHINO DENSITY INDICATORS** table attempts to provide crude indicators of rhino density by relating the number of locations where some rhino signs were encountered with the surveying effort. This is based on the assumption that the number of some signs of rhino encountered will be proportional to the effort (field days, distance walked, etc.) of the RPU in a certain area. The numbers in the column Density Indicator's - a rhino sign per unit of RPU activity - are therefore rough indicators of the relative densities of the rhino between the areas. See Table 2. *Rhino Density Indicator 2006.*

The Density Indicators for the Sumatran rhino in WK and BBS do not vary much between the areas, but those for Ujung Kulon are all much lower. This is most likely not an indication of a low Javan rhino density, but more likely caused by differences in the methods of calculation of field activities of the RMPUs.

Table 2. *RHINO DENSITY INDICATORS 2006.*

Working Area	Rhino		RPU Field Presence		Density Indicator			
	A	B*	C	D	A/C	A/D	B/C	B/D
	Number of Footprint	Number of Rhino signs*	Field Days**	Distance Walked	Rhinos/ 100 days	Rhinos/ 1000 km	Rhinos/ 100 days	Rhinos/ 1000 km
TNBBS	197	81	688	2532	17,01	46,21	7,41	20,14
TNWK	123	516	458	2756	26,86	44,63	112,66	187,23
<p><i>(B*) The total number of sign (excluding footprints) of rhino found. ** Total number of RPU group field days. (Footprints are not included, because the number provided in the tables is the number of individual footprints and not the number of separate tracks.)</i></p>								
Working Area	Rhino		RPU Field Presence		Density Indicator			
	A	B*	C	D	A/C	A/D	B/C	B/D
	Number of Footprint	Number of Rhino signs*	Field Days**	Distance Walked	Rhinos/ 100 days	Rhinos/ 1000 km	Rhinos/ 100 days	Rhinos/ 1000 km
TNUK	190	70	435	1823	43,68	104,22	16,09	38,40

Bukit Barisan Selatan National Park.

BBS is one of the highest priority areas for Sumatran megafauna in particular for the Sumatran Rhino, the Sumatran Tiger, and the Sumatran Elephant. Approximately 60 - 85 Rhinos, 40 - 50 Tigers, and about 500 Elephants inhabit BBS.

Historically, in Bukit Barisan Selatan National Park the rhino was distributed throughout the park. Rhino signs were found not just deep in the forest but also in disturbed forest and on the edges of coffee plantations.

Population of Sumatran rhino in BBS is producing based on discovery of small footprints of Sumatran rhino (FF = 15 - 18 and AA = 13 - 18) and direct sighting the RPU team to calf and mother of Sumatran rhino.

Field observation during 2006 and based on field report 2006, the RPUs estimated number of rhino in Bukit Barisan Selatan is about 66 - 76 individuals based on the size of the area where rhinos are found and an estimate of average density that is close to the accepted 'normal' density of one rhino per 1000 ha. Moreover, the RPUs estimated number of rhinos in every plotting area. See the table 3 and figure 2 below.

Tabel 3. Estimation of number and distribution of rhinos in BBSNP in 2006

Plotting Area	Estimated number of rhinos
Bumbon, Kubu Perahu, Krui	12 – 14 individual
Biha, Pegunungan Pius, Marang	9 – 11 individual
Mendati, Krengseng, Way Rilau	10 – 12 individual
Pemerihan, Bamban, KM. 50, Sukaraja Atas	12 – 19 individual
Penengahan, Menanga Kanan, Way Haru	8 – 10 individual
Tampang, Tanjung Mas, Belambangan	7 – 10 individual
TOTAL	66 – 76 individual

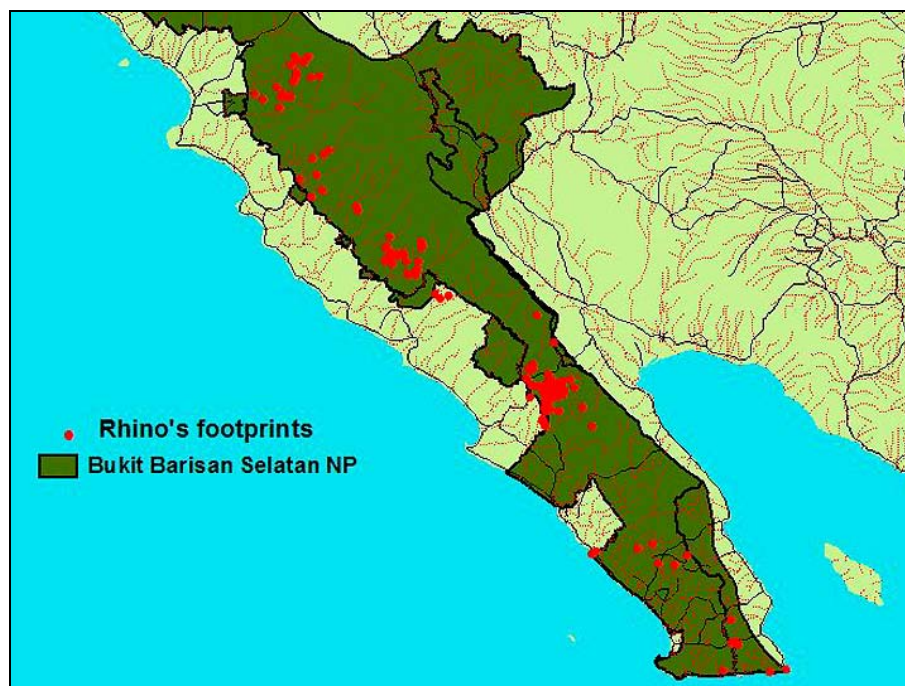


Figure 2 Rhino distribution in BBS 2006.

Rhino, Tiger, Elephant and Tapir distribution in the Park have considerable overlap although there are significant differences in distribution and abundance throughout the Park.

During field surveys in 2006, RPU's encountered 61 locations of tiger's' footprints, 106 locations of Tapir's footprints, and 44 locations of Elephant's footprints in BBS National Park. See figure 3 below.

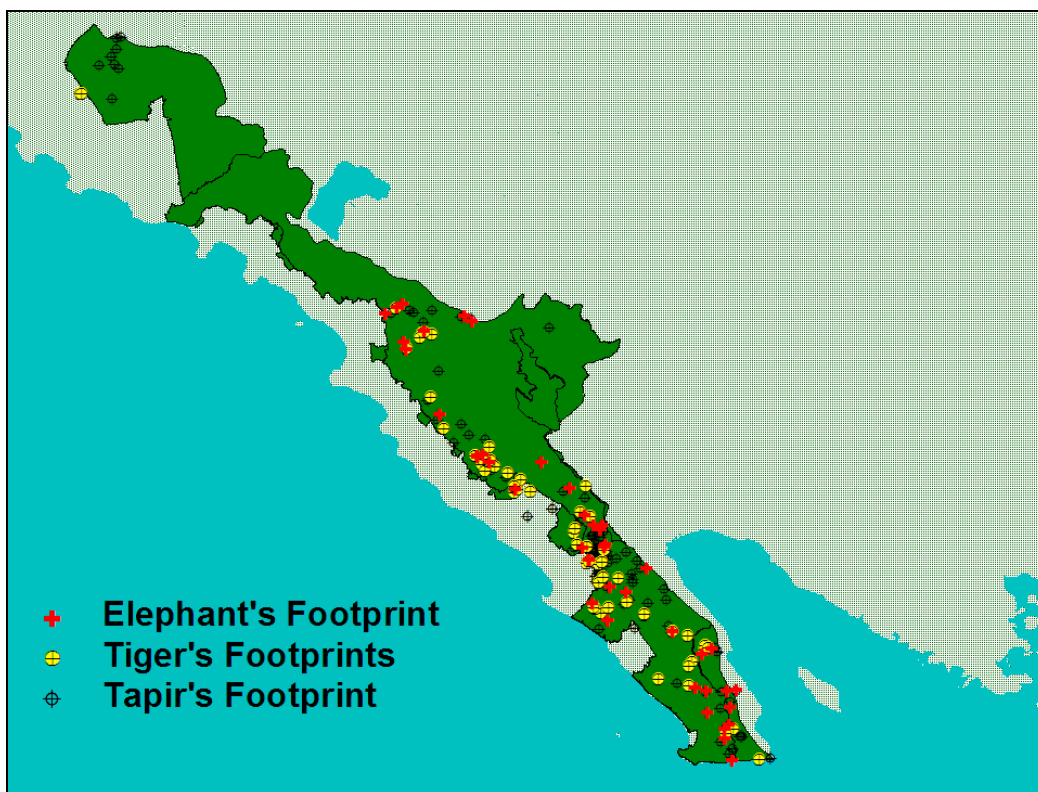


Figure 3. Distribution of Elephant, Tiger, and Tapir in BBS 2006.

Way Kambas National Park.

In Way Kambas, during the 107 times of surveys/patrols in 2005, 160 locations of rhino's footprints, 68 wallows, 170 dung, 43 foods, 276 other signs and one direct sighting, has been encountered.

Field observation during 1997 - 2004. The number of rhino in Way Kambas estimated 15 - 25. In 2005 and 2006, minimum 20 individuals were counted based on fact finding of rhino's signs.

Most of the footprints encountered within the Core Zone and a few in the Conservation Zone and Wilderness Zone of the Way Kambas National Park. See Figure 4 below.

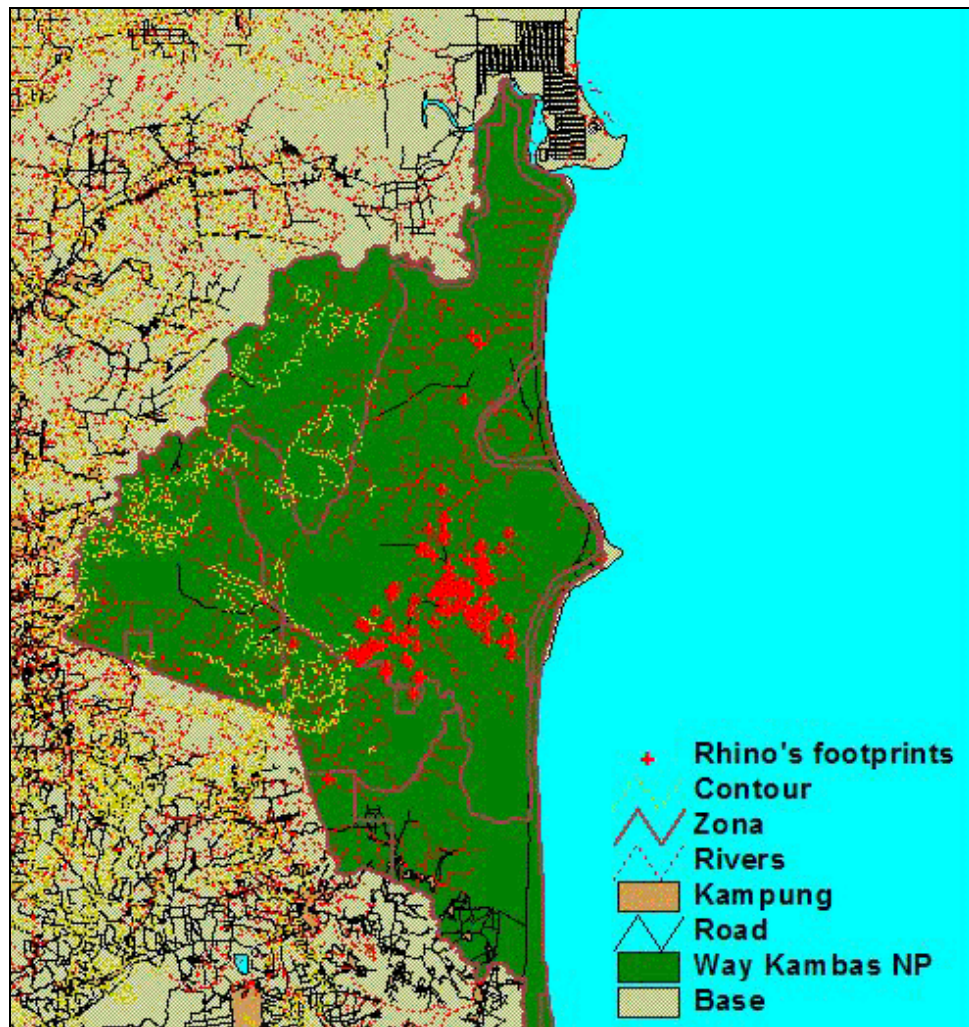


Figure 4. Rhino distribution in Way Kambas 2006.

Ujung Kulon National Park.

The National Park is famous for its population of Javan rhino, the only remaining population in Indonesia. During the patrols, a large number of rhino tracks, dung, food plants, and other sign were found in 2006.

Based on the data distribution in the rhino database the Javan rhino population is concentrated in three major areas; Cikeusik, Cibandawoh, and Cibunar. (*Ci = river*)

The population of Javan rhino in Ujung Kulon National Park is breeding. The WWF-Indonesia and Ujung Kulon NP staff provided evidence from the camera trap program of the birth of 4 calves in 2000 and 2001.

In September 2006, WWF Indonesia and Park staff claimed that they have found signs of four Javan rhino calves in Ujung Kulon. The first sign of calf was three days old of a small footprint (about 17 - 16 cm) along with a larger footprint presumably the mothers. The second sign was also another set of three days old mother and calf footprints, which was different in size to the first one and found in different area. The third sign was direct sighting of a female calf rhino and her mother by another team of survey but on the same day as the first and second signs was discovered. The fourth sign was found on the next day and in different area, in form of small footprint of Javan rhino.

In the same month, the RPU Ujung Kulon NP found five locations of footprints of javan rhino calf (size 18 - 17) and its mother. However, the distance of these locations were close to one another (not more than a half kilometer). A set of footprints found across the river Cigenter. Presumably, those signs came from the same individual.

In November 2006, the WWF-Indonesia's team and Ujung Kulon National Park authority got a camera trap picture of a baby Javan rhino. The picture shows a baby rhino standing just behind its mother.



Figure 5. A baby Javan rhino stands just behind its mother. Camera trap photograph.

© Photo credit – WWF Indonesia/Ujung Kulon National Park Authority

Since there has been no rhino poaching for several years and there is no other outside interferences that potentially could have disturbed the rhino and its habitat, the population should slowly expand, and not be stable as is indicated in the series of population estimates carried out over the last 25 years. The results of the population census indicate that the rhino has reached carrying capacity, but at a much lower level than 30 years ago. This is reason for concern, since a population of only 40-50 animals is in serious danger of becoming extinct even if there is no poaching.

Possible causes for this lack of growth include reduction of feeding opportunities through the increase of closed canopy forest, the invasive spreading of unpalatable palm species in the under story, and food competition with Banteng.

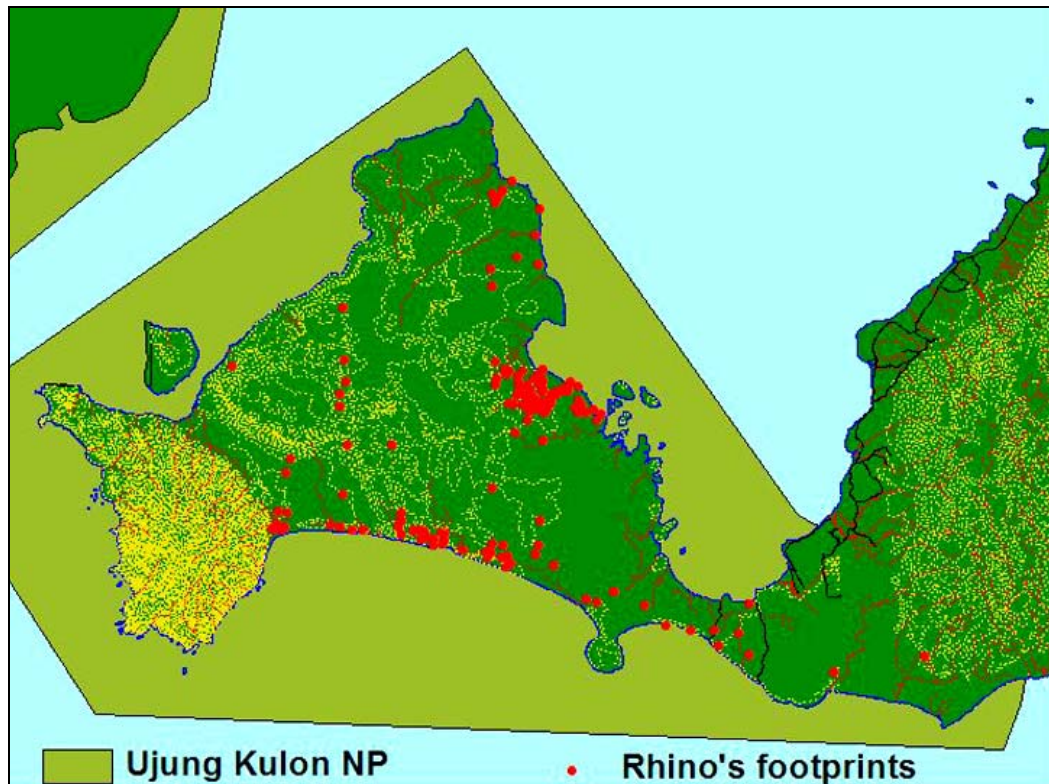


Figure 6. Javan rhino distribution in Ujung Kulon National Park 2006.

ILLEGAL ACTIVITIES ENCOUNTERED

Outputs:

More accurate and reliable information on illegal activities encountered within the National Park such as illegal poaching, forest encroachment, field crops, illegal fishing, and others.

Progress:

During the surveys and patrols many offences detected and numbered of people or suspects interdicted. The Number of offence detected is tabulated below.

Tabel 3. Illegal activities encountered in the park during 2006.

Working Area	Encroachment	Timber Theft	Rhino/Trap	Non Rhino (Mammals)	Other
TNBBS	21	7	0	12	6
TNWK	14	21	1	12	28
TNUK	3	0	0	0	1
Total All Areas	38	28	1	24	35

Bukit Barisan Selatan National Park.

In BBS, during the surveys and patrols 46 offences detected. *See the break down of cases above.*

Most cases detected were forest encroachment or forest conversions into land for agriculture. The forest is also mainly converted into coffee plantation and rice field. Although poaching is the immediate threat to the rhino, encroachment remains the biggest long-term threat to the park as rhino habitat. The rhino become more endangered by fragmentation of its habitat through indiscriminate forest clearance and forest conversion into agricultural land.

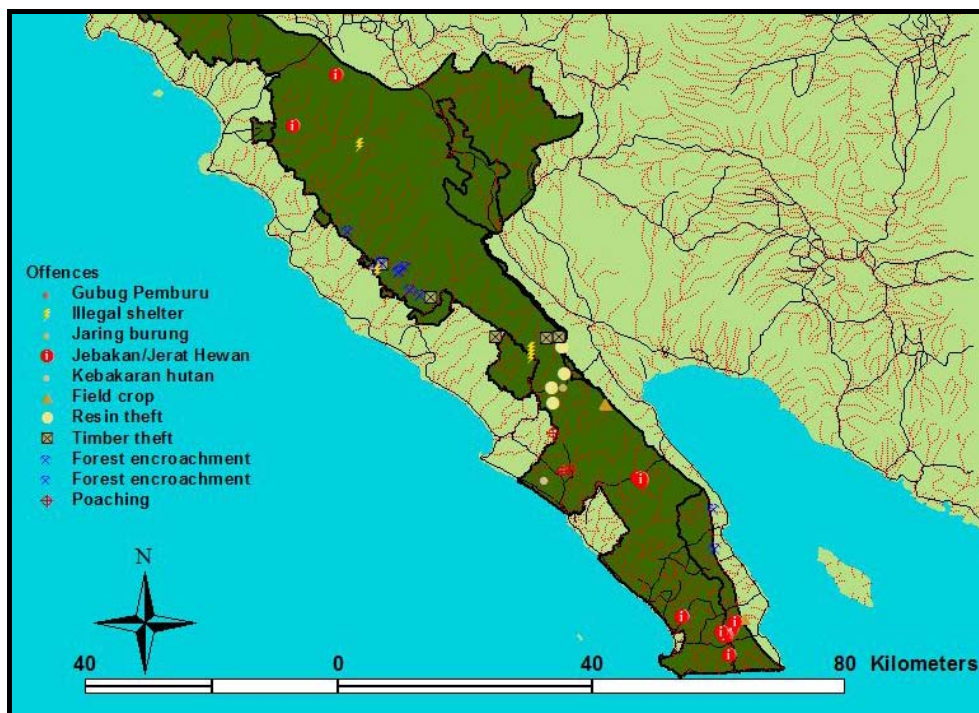


Figure 7. Offences detected in BBS NP 2006.

The number of cases detected decreased sharply than previous year. The RPU's in BBS have been very successful in preventing illegal logging in 2005. In May 2005, Forest Rangers of BBS and local police succeeded in arresting nine suspects of illegal logging along with the evidences, three trucks totally loaded with 472 pieces ($\pm 11,5 \text{ M}^3$) of processed wood. The loggers manipulated the document. Two of them, HERMAN BIN HAMID and SUROTO BIN SUJANGI, were convicted to eight months imprisonment.

During the year, no case of rhino poaching encountered. However, in several locations pit-trap for a large mammal, fitted with sharp wood lances, were discovered. Even if the traps were set for other species, they could kill or wound a rhino accidentally. Fortunately, no evidence of killed or wounded rhinos found. The traps spread around Bukit Peranduan Lumut, upper Air Nasal, A. Pondok Barja, upper Way Tenumbang, and Pematang Melintang.

An Intelligence and law enforcement operation succeeded in uncovering three cases of wildlife poaching. See table 4 below.

Date	Case/Suspects	Evidences	Verdict
January 16, 2006	Illegal trade/ Rusdi bin Mansyur (42 years old)	A piece of tiger skin, length 89 cm.	10 months imprison and 500.000 rupiahs fine (date April 4, 2006).
March 18, 2006	Illegal trade/ Pahri Bin Zaiti (36 years old)	2 pieces of tiger skin 4 cm x 7 cm, 6 small pieces of deer skin, and 1 deer horn.	10 months imprison and 250.000 rupiahs fine (July 13, 2006).
March 19, 2006	Illegal poaching (and trade)/ – Subani Bin Jani (41 years old)	– Binturong skin (1 pcs)	10 months imprison and 250.000 rupiahs fine (July 13, 2006). 18 months imprison and one million rupiahs fine (date July 13, 2006).
	– Taslim Bin Murhis (45 years old)	– Traditional gun/locok (1 pcs), – Deer horn (1 pcs), – Bear clawn (1 pcs), – Projectile, ammunition (inside a bottle).	

Tabel 4. Three cases of wildlife poaching or trading in BBS uncovered during 2006.



Figure 8. A Forest ranger of BBS National Park arrested Rusdi bin Masyur (42 years old), a wildlife trader along with tiger skin as evidence.

Way Kambas National Park.

In Way Kambas, during the surveys and patrols, the RPU detected 76 offences, almost 28% of cases were timber theft and 16% of cases were illegal poaching targeted on a deer or wild pig. Sometimes the teams could arrest the poachers, but in most cases, the team only could collect the evidence. RPU detected more than fifties traps targeting deer, wild pig, and only a few tigers. Identified areas where the RPU encountered many traps than any other place, such as Way Tidung, Sartam, and Perambahan. However, most cases were found in Way Kambas was illegal fishing and bird theft.

For many years, the RPU in Way Kambas have been very successful in preventing any poaching of rhinos, and so far, no poaching specifically targeting rhino has been recorded. However, In November 2006, the teams found a young rhino skeletons in a wallow. The rhino was killed by a single shot from above through the head while in a deep, trench like wallow. (See Figure 9 below).



Figure 9. The poachers killed rhino by shot at the head (see the hole on rhino skull above). The rhino were wallowing while the poachers came then killed him (right).

The RPU estimated that the killing of the rhino occurred about 3 weeks before the skeleton was found. This location was also visited by an RPU about two months before, and is one of the few places in Way Kambas where there is some fresh water in the dry season.

The killed rhino was still young (subadult) and the killers took the horn (must have been very small), the hooves, and probably also the skin. It appeared that other people took some of the bones before the RPU visited the location.

The Intelligence and Law Enforcement (ILEU) was dispatched from BBS to assist the RPU and the National Park with this case. After they have investigated the crime scene, they concluded that the killers were a group of 4 – 8 people that entered Way Kambas from the north (Rasau or Camp 5000). The killers left few traces, but the team concluded that the hunters were not professional rhino hunters that were actively targeting rhino. It appeared that it was a chance encounter of a group of hunters with a rhino, that did not notice the hunters or

could not get away quick enough from the deep wallow. The gun used was a 7.62 mm army rifle, probably an M-16.

Although the RPUs have been very successful in preventing any poaching of rhinos, they could have not been able to stop encroachment to the Park. Over the last two years, massive encroachment has occurred along the southern boundary of the park, by villagers falsely claiming traditional land rights. So far, the authorities have not responded to this infringement and if unchallenged it's likely that people will settle across the park borders in other places as well. So far the areas encroached, about 10% of the Park area, are not suitable for rhino, but the infringements are moving closer and closer to the rhino habitat. Furthermore the new settlements are points of departure for poachers and loggers that penetrate now far into the interior of the Park.

As can be seen on the map most cases of timber theft found close to the park boundary. See *figure 7 below*. The RPUs also found many forest fire cases in every zone of Way Kambas that frequently occurred in dry season.

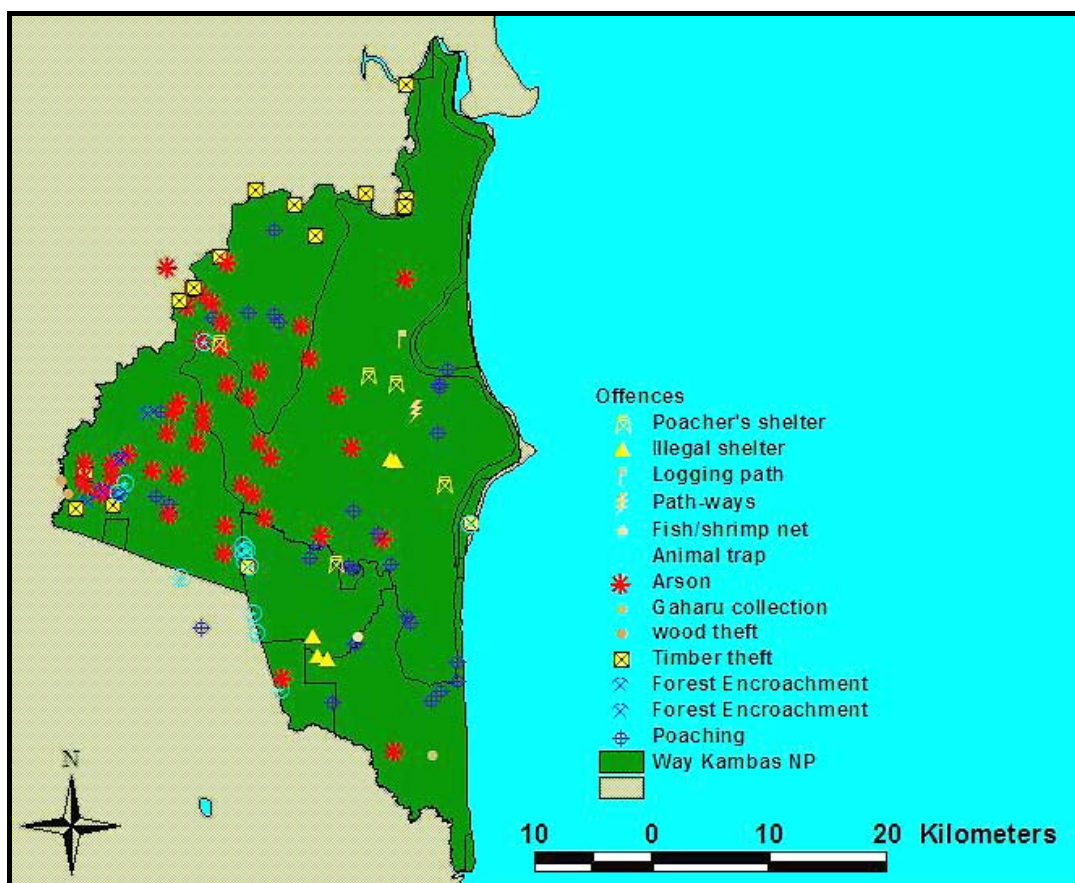


Figure 10. Offences detected in Way Kambas NP 2006.

Ujung Kulon National Park.

Since 1998 anti-poaching patrols (RPUs) have been operating in Ujung KUlOn under the Program Konservasi Badak Indonesia / Indonesian Rhino Conservation Program (PKBI / IRCP). Since the start of the RPU program no poaching has occurred, although the risk has steadily intensified. Even before the establishment of the RPUs, the detected cases of rhino poaching were rare.

Conclusions

Currently, there are six RPUs and two TPUs operating in Bukit Barisan Selatan, five RPUs in Way Kambas, and three RMPUs in Ujung Kulon National Park. These units play an important role in the monitoring of the populations of rhino, tiger, elephant, tapir and other endangered mammals in each park. The units also formed to counteract all forms of wildlife crime and habitat destruction, like illegal logging and encroachment.

The RPUs have been fully accepted as part of the Park management structure though administratively they are not under the direct supervision of the Park. Technically, they are responsible to the Head of the National Park through the Field Coordinator.

Cooperation with the National Parks and with the local authorities has been generally very good, and the RPU activities are accepted as a very valuable contribution toward the protection and management of the Parks. Joint operations with the Park Rangers have been conducted from time to time when the situation demands a larger number of people to participate in operations.

Bukit Barisan Selatan National Park in Sumatra, Indonesia, is one of the highest priority areas for the Sumatran Rhino, the Sumatran Tiger, the Sumatran Elephant and Tapir. These key wildlife populations are surviving in the wild as the RPUs has encountered their signs by patrol.

The Sumatran rhino population in BBS NP is viable at present but at risk of local extinction. Although poaching pressure on Sumatran rhino within the areas covered by the RPUs has reduced to the point of elimination since no trap or poacher detected by patrol, forest encroachment and timber theft, which was occupied 48% of all offences encountered, remains the biggest threat to the Park as rhino habitat. The rhino become more endangered by its habitat loss through indiscriminate forest clearance and forest conversion into agricultural land. Moreover, the park is not more than a few kilometers wide in most places hence, mainly in southern half of BBS, a few rhinos found in local villages or in the edge of locals' plantations that is too risky for rhino's life. Therefore, the southern half of BBS is most intensively patrolled by the RPU.

Way Kambas supports one of the larger populations of the Sumatran Rhino, with probably 15 - 25 individuals living mainly in the forested eastern side of the National Park as many of their signs encountered by patrol. The RPUs in Way Kambas have been very successful in preventing any poaching of rhinos, and so far, no poaching specifically targeting rhino has been recorded, though poaching for meat and sport is still occur in Way Kambas.

Access to large areas of the Park is comparatively easy, because of the open nature of large parts of the forest and because the existence of old logging roads, built in 60s. Therefore, over the last two years massive encroachment has occurred along the Southern boundary of the park, by villagers falsely claiming traditional land rights. So far the authorities have not responded to this infringement and if unchallenged it's likely that people will settle across the park borders in other places as well. To date, the areas encroached, about 10-15 % of the Park area, are not suitable for rhino, but the infringements are moving closer and closer to the rhino habitat. Furthermore the new settlements are points of departure for poachers and loggers that penetrate now far into the interior of the Park.

Intelligence and Law Enforcement that implemented since 2002 in Bukit Barisan Selatan and Way Kambas National Parks be appreciated successfully hence many illegal poachers, traders and people involved, taken to court to get the justice. RPUs also unable to identified the network and "modus operandi" of illegal poaching. Since then, illegal poaching case

decreased sharply, in fact no rhino poaching detected in this year, but still need to monitor and protect rhinos in Bukit Barisan Selatan and Way Kambas National Park.

Recommendations

The Sumatran rhinoceros remains a highly endangered species and will remain so in the immediate future. For an anti-poaching program to be effective, it must be ongoing. Any pause and relaxation in the program would lead to an undoing of the progress achieved as the poachers would follow the situation closely and move back to the areas currently protected. In a few months, the progress made in many years of work could be undone as it only took a few groups of skilled poachers to exterminate most rhinos in an area.

Although poaching is the immediate threat to the rhino, encroachment remains the biggest long-term threat to the park as rhino habitat. Therefore, there must be stop or halt area encroachment so that area is secure for use by rhinos again. Stop new roads, mining activities, over exploitation of the forest, etc. in the National park. In BBS, the encroachment inside the Park that occupied 30,000 families should be reversion.

The Activities of the RPUs have a significant impact on the conservation of natural landscape, because the RPUs not only prevent rhino poaching, but are also active in arresting and preventing habitat degradation through illegal logging, theft of forest products including wildlife, and illegal settlements. Therefore, RPUs should remain in place in Bukit Barisan Selatan and Way Kambas National Park on Sumatra and in Ujung Kulon national Park on Java.

The number of units should be gradually increased and deployed in an expanding area in order to enlarge secure habitats in the Parks, and allow rhinos and other wildlife to return to areas where they were exterminated in the past. The IRCP RPU program will remain critical for the continued survival of the Javan and Sumatran rhino throughout the implementation period of the Indonesian Rhino Conservation Strategy and Action Plan.

The Sumatran Rhino in Way Kambas are most vulnerable situation and continued presence of anti-poaching units is vital to discourage rhino poachers from near Kerinci or Barisan Selatan to try their luck in Way Kambas. The existing massive encroachment should be removed, and then the areas need to be reforested and turned into secure rhino habitat.

Establishment secondary habitat for Javan rhino after immediately identifying and securing habitat and future translocations. Additional habitat is not available locally and that Ujung Kulon NP will never have a population large enough to secure the long-term survival of the species. Gunung Halimun NP as a potential site for a second Javan rhino population.

QUARTERLY DATA

GENERAL PERFORMANCE PARAMETERS

FIRST QUARTER (1 January - 31 March 2006)

Working Area	Number of Activities	Distances walked (Km)	Number of Days	Field days per person
Bukit Barisan	37	1.566,50	323	17,14
Way Kambas NP	40	1.366,49	208	15,88
Ujung Kulon NP	15	799,67	158	18,80
Total	92	3732,66	689	<i>Average 17,27</i>

SECOND QUARTER (1 April - 30 June 2006)

Working Area	Number of Activities	Distances walked (Km)	Number of Days	Field days per person
Bukit Barisan Selatan NP	36	1.989,80	322	16,47
Way Kambas NP	34	1.046,85	179	14,87
Ujung Kulon NP	18	769,49	173	18,80
Total	88	3806,14	674	<i>Average 16,71</i>

THIRD QUARTER (1 July - 30 September 2006)

Working Area	Number of Activities	Distances walked (Km)	Number of Days	Field days per person
Bukit Barisan Selatan NP	34	1.225,20	283	14,54
Way Kambas NP	43	887,10	170	13,55
Ujung Kulon NP	19	652,72	178	18,75
Total	96	2765,02	631	<i>Average 15,61</i>

FOURTH QUARTER (1 October - 31 December 2006)

Working Area	Number of Activities	Distance walked (Km)	Number of Days	Field days per person
Bukit Barisan Selatan NP	36	1,588.9	331	15,31
Way Kambas NP	35	862,50	127	11,17
Ujung Kulon NP	14	431,89	139	16,00
Total	85	1304,98	597	<i>Average 14,16</i>

ILLEGAL ACTIVITIES ENCOUNTERED

FIRST QUARTER (1 January - 31 March 2006)

Working Area	Encroachment	Timber Theft	Illegal Hunting		
			Rhino / Trap	Non Rhino (Mammals)	Other
Bukit Barisan Selatan NP	4	5	0	4	3
Way Kambas NP	0	8	0	2	4
Ujung Kulon NP	0	0	0	0	0

SECOND QUARTER (1 April - 30 June 2006)

Working Area	Encroachment	Timber Theft	Illegal Hunting		
			Rhino / Trap	Non Rhino (Mammals)	Other
Bukit Barisan Selatan NP	9	1	0	6	0
Way Kambas NP	8	5	0	4	7
Ujung Kulon NP	3	0	0	0	0

THIRD QUARTER (1 July - 30 September 2006)

Working Area	Encroachment	Timber Theft	Illegal Hunting		
			Rhino / Trap	Non Rhino (Mammals)	Other
Bukit Barisan Selatan NP	1	0	0	0	1
Way Kambas NP	0	6	0	3	8
Ujung Kulon NP	0	0	0	0	0

FOURTH QUARTER (1 October - 31 December 2006)

Working Area	Encroachment	Timber Theft	Illegal Hunting		
			Rhino / Trap	Non Rhino (Mammals)	Other
Bukit Barisan Selatan NP	6	1	0	1	2
Way Kambas NP	6	2	1	3	9
Ujung Kulon NP	0	0	0	0	0

BASIC RHINO POPULATION PARAMETERS

(Number of locations of rhino signs encountered).

FIRST QUARTER (1 January - 31 March 2006)

Working Area	Footprint	Wallow	Feces	Food	Other signs*	Direct Sighting
Bukit Barisan Selatan NP	40	6	8	5	6	0
Way Kambas NP	18	18	43	11	33	0
Ujung Kulon NP	19	6	2	0	0	0
Total	77	30	53	16	39	0

SECOND QUARTER (1 April - 30 June 2006)

Working Area	Footprint	Wallow	Feces	Feces	Other signs*	Direct Sighting
Bukit Barisan Selatan NP	50	6	5	2	2	2
Way Kambas NP	39	23	57	15	62	1
Ujung Kulon NP	104	21	12	7	1	1
Total	193	50	74	24	65	4

THIRD QUARTER (1 July - 30 September 2006)

Working Area	Footprint	Wallow	Feces	Feces	Other signs*	Direct Sighting
Bukit Barisan Selatan NP	91	12	11	3	2	1
Way Kambas NP	50	16	40	21	71	0
Ujung Kulon NP	59	2	9	5	0	3
Total	200	30	60	29	73	4

FOURTH QUARTER (1 October - 31 December 2006)

Working Area	Footprint	Wallow	Faeces	Faeces	Other signs*	Direct Sighting
Bukit Barisan Selatan NP	20	8	0	0	1	1
Way Kambas NP	11	3	22	4	51	1
Ujung Kulon NP	11	3	22	4	51	1
Total	42	14	44	8	103	3

* Include urine, scratches, rubs,

PATROL DATA - 2006

BUKIT BARISAN SELATAN NP

Location	Activity	Start Date	End Date	Days	Length (Km)	Remarks
----------	----------	------------	----------	------	-------------	---------

Q1 (January - March)

Wonosobo, Kotaagung, Pringsewu, Talang Padang.	Intelligence	4 Jan	9 Jan	6	160,00	Investigation. Information is correct that Rusdi bin Masyur has and keep a tiger's skin.
Wonosobo, Kotaagung, Bengkunt, Talang Padang, Pagelaran.	Arrestment/ Investigation	14 Jan	27 Jan	14	190,00	Arrest a suspect, Rusdi bin Mansyur, along with the evidences.
Ujung Pandang, Inhutani, Hulu Way Pintau, Hulu Way Ngaras, Umbul Basir, Umbul Kali Pasir, Tulung Asahan.	Patrol/ Survey	16 Jan	25 Jan	10	26,30	No rhino sign.
Karang Berak, Gn. Malang, Way Sumpit, Menanga Kiri, Peg. Serumpun Batu.	Patrol/ Survey	4 Feb	12 Feb	9	24,50	No rhino sign. Found footprints of tiger, elephant, and tapir.
Pelita Jaya, Kubu Gedung, Hulu Way Pius, Hulu Way Biha, Way Marang, Trangging.	Patrol/ Survey	18 Feb	26 Feb	9	43,00	Signs of rhino, tiger, elephant and tapir.
Pal 50, Tulung Bamban, Hulu Way Bambang, Anak Way Bambang, KM 32.	Patrol/ Survey	2 Jan	9 Jan	8	34,00	No new rhino sign. Encountered resin theft.
Pal 50, Tulung Bamban, Hulu Way Bambang, Anak Way Bambang, Way Bambang Tengah, KM 30.	Patrol/ Survey	14 Jan	25 Jan	12	41,00	Rhino's signs. Encountered resin theft.
Pemerihan, Cawang Haro, anak Way Pemerihan, anak Way Canguk, Way Canguk tengah, Sumberejo.	Patrol/ Survey	3 Feb	11 Feb	9	32,00	No new rhino sign. No illegal poaching. Encountered bird theft and illegal fishing.
Kubu Perahu, Way Menterang, Hulu Way Tenumbang, Way Tenumbang Tengah, Way Mahnai Tengah, Way Krui, Sukaraja Krui.	Patrol/ Survey	17 Feb	26 Feb	10	41,00	Rhino's signs. Encountered bird theft.
Km 26, Hulu Way Pemerihan, Sukaraja Atas.	Patrol/ Survey	2 Jan	9 Jan	8	14,00	No rhino sign.
KM 30, Hulu Way Bambang, KM 24	Patrol/ Survey	17 Jan	26 Jan	10	16,00	Rhino's signs (old and new).

Location	Activity	Start Date	End Date	Days	Length (Km)	Remarks
Sukaraja Atas, Peninggeman, Hulu Way Pemerihan, Hulu Way Canguk, Peg. Cawang Haro.	Patrol/Survey	3 Feb	12 Feb	10	30,00	Rhino's signs and other wildlife. Encountered forest encroachment and illegal crops.
KM 26, Way Pemerihan, KM 18.	Patrol/Survey	4 Jan	9 Jan	6	12,00	Signs of rhino and tapir.
KM 13, Kali Timbulan, Hulu Way Pintau, Way Bambang, Talang Sembilan, Sidomulyo.	Patrol/Survey	17 Jan	26 Jan	10	22,00	Footprints of tapir, tiger and group of elephant.
Limus, Sinar Ogan, Way Blambangan, Hulu Way Sleman, Belimbing, Danau Menjuket, Cukuh Redak, Tampang Tua.	Patrol/Survey	4 Feb	13 Feb	10	44,00	No rhino sign. Only footprints of tiger and tapir. Encountered tiger's trap.
Kupang Hulu, Siring Huwong, Way Ngambur, Panji Wayang.	Patrol/Survey	18 Feb	27 Feb	10	26,00	Rhino's signs and tapir. Encountered forest encroachment and timber theft.
KM 29, Way Bambang, KM 24.	Patrol/Survey	2 Jan	9 Jan	8	20,10	Rhino's signs.
Krengseng, Way Mendati, Way Rilau, Peg. Pematang Langgar.	Patrol/Survey	16 Jan	25 Jan	10	35,00	Rhino's signs.
Pal 50, Kuyung Arang, Hulu Way Bambang, Hulu way Pintau, Tumpak, Srikaton.	Patrol/Survey	3 Feb	10 Feb	8	30,50	Rhino's footprints (infant rhino), also tapir and tiger.
Way Nipah, Purwosari, Kejadian, Way Bahima, Hulu Way Menanga Kiri, Kakabu.	Patrol/Survey	17 Feb	25 Feb	9	45,00	No rhino sign. Encountered trap that have killed a deer.
KM 21, Way Bambang, KM 30.	Patrol/Survey	4 Jan	8 Jan	5	20,00	Rhino's footprints in Way Bambang but immeasurable caused of hard rain.
Way Mendati, Kubu Kulit, Hulu Way Telmak, Hulu Way Ngambur Bundik.	Patrol/Survey	18 Jan	24 Jan	7	35,00	Footprints of rhino and tapir. Encountered timber theft (processed wood).
Tampang, Blambangan Huma, Peg. Ramping Muara Way Blambangan.	Patrol/Survey	18 Feb	25 Feb	8	45,00	Found elephant tracks in Ramping mountain. And also tapir. No animal trap encountered.
KM 24, KM 26, Anak Way Bambang, KM 29.	Patrol/Survey	4 Jan	11 Jan	8	12,00	Signs of rhino. Encountered resin theft.
Karang Berak, Umbul Gajah, Karang Anyar, Sinar Laut, Way Bahima, Way Kejadian, Hulu Way Kejadian,	Patrol/Survey	4 Feb	13 Feb	10	34,00	No rhino sign. Encountered 5 animal traps close to each other. Suspects run away caught red-handed

Location	Activity	Start Date	End Date	Days	Length (Km)	Remarks
Purwosari.						while trap setting.
KM 50, Talang Joni, Hulu Way Bambang, Bambang besar, KM 30.	Patrol/Survey	18 Feb	25 Feb	8	20,00	Footprints of rhino, tiger and elephant. No forest disturbance.
Camp Pelatihan Way Kanan, Lampung.	MIKE Training	9 Mar	14 Mar	6	0,00	-
Siging, Mulang Maya, Ngaras, Bengkunt.	Patrol Arrestment	16 Mar	25 Mar	10	250,00	Arrested 3 suspects of poaching in Siging, Pahri, Subani, dan Taslim.
Panji Wayang, Panama, Hulu Way Ngambur, Bundik, Hulu Way Telma, Kubu Kulit.	Patrol/Survey	16 Mar	23 Mar	8	30,60	No rhino sign. Encountered forest encroachment in Kubu Kulit for almost 3 hectares. Tiger dung.
Eks Inhutani, Hulu Way Ngaras, Peg. Basilila, Sidomulyo.	Patrol/Survey	3 Mar	12 Mar	10	28,00	No rhino sign. Footprints of tiger, tapir and elephant. Encountered processed wood.
Mendati, Way Rilau, Pematang Langgar.	Patrol/Survey	16 Mar	23 Mar	8	16,00	Rhino's signs.
Peninggeman, Hulu Way Pemerihan, Hulu Way Canguk, Way Canguk, Sumberejo.	Patrol/Survey	5 Mar	12 Mar	8	23,00	No rhino sign except prints of tapir, elephant and tiger.
Tampang, Kubu Sleman, Way Blambangan, Belimbing, Sleman, Menjukur.	Patrol	4 Mar	12 Mar	9	52,50	No illegal poaching.
Grogol, Hulu Way Ngaras, Blok VII.	Patrol/Survey	16 Mar	22 Mar	7	22,50	Signs of rhino and tiger. Encountered timber theft.
KM 13, Way Bangkok, Talang Pagelaran, Way Bambang, KM 21, KM 30.	Patrol/Survey	4 Mar	10 Mar	7	25,00	Rhino's signs.
KM 18, Anak Way Pemerihan, Way Pemerihan, Sukaraja Atas.	Patrol/Survey	4 Mar	12 Mar	9	24,50	Signs of rhino, tapir, tiger, and elephant. Encountered also rice fields, coffee and chocolate.
Way Nipah, Purwosari, Way Haru, Way Bebuta, Way Pemerihan, Way Heni.	Patrol/Survey	16 Mar	24 Mar	9	42,00	No rhino sign except tiger, tapir, and elephant.

Q2 (April - June)

Way Haru, Way Pintau, Siring Balak, Way Mendati, Kubu Gedung, Pugung Tampak.	Intelligence	4 Apr	12 Apr	9	200	Obtained information that tiger poaching still present.
Tampang, Kaugading, Pesanguan, Muara Dua, Giri Toto.	Intelligence	17 Apr	28 Apr	12	300	Arrest 2 suspects of wildlife trading in Muara Dua, Hartono Bin Yososuwarno and Kojot Bin Maslan.
Tampang, Sinar Ogan, Penganan, Kaugading, Tirom, Bandar Agung, Krui.	Intelligence	4 May	13 May	10	190	Defeated tiger poisoning by people of Siring Huong. Obtained information that someone of Kubu Gedung kept tiger's skin.
Peninggeman, Hulu Way Pemerihan, Way Pemerihan, Km 26.	Patrol/ Survey	5 May	10 May	6	21,00	Rhino's signs along the survey routes between Way Pemerihan to Km 26.
Kotaagung, Umbul Kuyung, Sukamarga, Hantatai, Suoh.	Intelligence	22 May	30 May	9	160	Obtained information that there is someone seeks "trenggiling" (scaly anteater) in Wonosobo and Kotaagung. Also informed that local people of Tegak Huong and Talang Sandara keep traditional gun ("senjata api locok") for hunting.
Mendati, Kubu Kulit, Hulu Way Mendati, Krengseng, Hulu Way Rilau, Ketapang.	Patrol/ Survey	5 Apr	14 Apr	10	27	Signs of rhino and other wildlife such as tiger and tapir.
Grogol, Hulu Way Ngaras, Hulu Way Tembulih.	Patrol/ Survey	19 Apr	26 Apr	8	29	No rhino sign except tapir, tiger and elephant.
Talang Pendowo, Hulu Way Biha, Hulu Way Marang Lunik, Trangging.	Patrol/ Survey	5 May	12 May	8	36	Signs of rhino, tapir, tiger, and elephant.
Bombon, Way Anderlung, Hulu Way Tenumbang, Hulu Way Mahnai, Way Krui.	Patrol/ Survey	18 May	26 May	9	58	No rhino sign. Signs of tapir, tiger, and elephant.
Tenumbang, Cawang Kiri, Damar Pak, Peg. Pius, Hulu Way Pius, Hulu W. Lubuk Pering, Hulu W. Ngambur, Hulu W. Biha, Simpang Kuda, Kubugedung, Talang Meranjat, Biha.	Patrol/ Survey	5 Apr	14 Apr	10	49	Signs of rhino (fresh footprints). No illegal poaching encountered.

Penyantun, Pg. Cempaka, Napaliuk, Way Babuta, Way Canguk, Sumberejo.	Patrol/ Survey	20 Apr	29 Apr	10	37	No rhino sign. Discovered signs of tapir, tiger, elephant, and other wildlife.
Suka Maju, Hulu Way Tenumbang, Hulu Way Krui, Way Meluang, Kubu Perahu.	Patrol/ Survey	5 May	12 May	8	17	Rhino's signs.
Mendati, Way Mendati, Krengseng, Hulu Way Rilau, Pematang Langgar.	Patrol/ Survey	18 May	26 May	9	17	Rhino's signs.
Penengahan, Way Campang Kanan, Hulu Way Paya, Hulu Way Nenok, Hulu Way Penipahan.	Patrol/ Survey	5 Apr	13 Apr	9	18	Signs of rhino, tapir, tiger, elephant and deer. Encountered elephant's skeletons older than a year.
Karang Berak, Way Menanga Kiri, Way Kejadian, Penyantun, Way Nipah.	Patrol/ Survey	19 Apr	27 Apr	9	28	No rhino sign except signs of tapir and tiger. Encountered trap for small animal.
Penengahan, Way Campang Kanan, Hulu Way Menanga Kanan, Menanga Kanan, Way haru, Sumberejo.	Patrol/ Survey	5 May	14 May	10	51	Signs of rhino, tiger, and elephant.
Sumberejo, Way Canguk, Way Haru, Way Menanga.	Patrol/ Survey	20 May	27 May	8	48	No new sign of rhino.
Pematang Langgar, Way Tembulih, Hulu Way Rilau, Krengseng, Way Mendati.	Patrol/ Survey	5 Apr	13 Apr	9	46	No illegal poaching, timber theft, nor forest encroachment. Signs of rhino.
Asahan, Way Asahan, Sinar Sumendo, Way Blambang Huma, Otok Radang, Pg. Jeruk, Hulu Way Penaga, Hulu Way Kawat, Pengekahan, Belimbing, Way Sleman, D. Menjukut, W. Sekawat, Tampang Tua.	Patrol/ Survey	4 May	13 May	10	51	No rhino sign. Signs of tapir and elephant. Encountered deer trap.
KM 28, Hulu Way Pemerihan, Way Pemerihan, KM 21.	Patrol/ Survey	20 May	29 May	10	39	Rhino's signs around the road.
Kubu Perahu, Hulu Way Tenumbang, Hulu Mahnai Balaik, Mandiri.	Patrol/ Survey	6 Apr	13 Apr	8	50	Signs of rhino, tapir, and tiger.
Pal 50, Hulu Way Bambang, Way Bambang besar, Talang Pagelaran.	Patrol/ Survey	19 Apr	26 Apr	8	40	No rhino sign. Elephant's footprints. No forest encroachment and timber theft.

KM 18, Pos Pemerihan, Way Pemerihan besar.	Patrol/ Survey	18 May	27 May	10	15	Rhino's signs.
Pal 50, Hulu Way Bambang, Km 24.	Patrol/ Survey	6 Jun	13 Jun	8	25,00	Rhino and other wildlife's signs.
Haur Gading, Sukamaju, Otok Radang, Way Asahan.	Patrol/ Survey	17 Jun	25 Jun	9	38,00	No rhino sign except tapir and elephant.
Kubu Perahu, Way Menterang, Hulu Way Krui, Hulu Way Tengkuluk, Way Gunung, Gunung Kemala.	Patrol/ Survey	8 Jun	17 Jun	10	24,00	No rhino sign except tapir, tiger, and elephant. Encountered forest encroachment and traces of bird theft.
Mendati, Way Mendati, Pegunungan Kuyung, Kubu Kulit, Hulu Way Telmak, Hulu Way Ngambur, Panama.	Patrol/ Survey	21 Jun	29 Jun	9	32,00	Rhino and other wildlife's signs such as tapir, tiger, and elephant. Encountered forest encroachment.
Tirom Kampung, Tig Simpang, Hulu Way Samang, Way Batu, Way Campang Kanan, Penengahan.	Patrol/ Survey	17 Jun	26 Jun	10	25,00	No rhino sign except tapir and elephant.
Talang Sukadi, Way Pintau, Way Bambang, Talang Sembilan, Sido Mulyo.	Patrol/ Survey	5 Jun	12 Jun	8	26,00	No rhino sign. Found footprints of tapir, tiger, and elephant. Direct sighting group of elephant. Encountered timber theft.
Limus, Way Blambangan, Danau Menjukut, Way Sekawat, Tampang.	Patrol/ Survey	19 Jun	27 Jun	9	29,00	Rhino's footprints. Encountered skull of tapir and elephant. Encountered also traces of animal trap.
Marang, Kupang Ulu, Way Ngambur Bunuk, Way Ngambur Pangkalan, Panama, Panji Wayang.	Patrol/ Survey	8 Jun	17 Jun	10	47,00	No rhino sign. No illegal poaching. Encountered new forest encroachment.
Sangsado, Talang Sebelas, talang Tujuh, Blok Lima, Hulu Way Ngaras, Way Saru Balak.	Patrol/ Survey	22 Jun	30 Jun	9	52,00	Rhino's signs. No illegal poaching, timber theft, forest encroachment.
KM 22, Way Bambang, Way Pemerihan.	Patrol/ Survey	4 Jun	11 Jun	8	76,00	Rhino's signs. Direct sighting a rhino.
Km 30, Km 22, Km 18, Way Pemerihan.	Patrol/ Survey	18 Jun	25 Jun	8	62,00	Rhino's footprints and wallow in KM 22 Way Pemerihan. Encountered a tapir trespassed local people's crops and trapped in unused toilet in Way Heni,

							Sumberejo.
Sukaraja Atas, Peninggeman, Way Pemerihan Besar, Hulu Way Pemerihan, KM 26.	Patrol/Survey	4 Jun	11 Jun	8	20,00		No rhino sign except tapir and tiger.
Q3 (July - September)							
Limus, Sinar ogan, Anak Way Belambangan, Duku Banyak, Way Belambangan Tampang, Tanjung Mas, Sukadamai.	Intelligence	20 Jul	27 Jul	8	90,00		Elephant and deer poaching still presence in Kec.Pematang Sawa and Kec. Semaka Kab. Tanggamus.
Tampang, Sinar Ogan, Pangenan, Tirom.	Intelligence	10 Aug	18 Aug	9	60,00		Encountered evidences and information of elephant poaching in Tanggamus, also deer poaching in Tampang.
Way Heni, Kubu Gedung	Intelligence	20 Aug	27 Aug	8	110,00		Still presence illegal activity in hunt and trade of ivory and tiger's skin around BBS.
Pemerihan, Way Heni, Siging, Bengkumat, Tenumbang, dsk.	Intelligence	06 Sep	14 Sep	9	180,00		Local people still kept ivory and tiger's skin in Bengkumat.
Tirom, Kaur Gading, Penganan, Sinar Ogan, Cukuh Pandan.	Intelligence	18 Sep	26 Sep	9	54,00		Informed that 2 elephant's ivory form Tampang has sold out on 19 September 2006. Informed also that some people of Sinar Ogan, Penganan, Tampang Tua, had and kept "senjata locok", it ever had been used to hunt deer and elephant.
Way Mendati, Krengseng, Hulu Way Ngambur.	Patrol/Survey	24 Aug	28 Aug	5	26,00		Signs of rhino. No illegal poaching.
Pal 50, Tulung Baman, Hulu Way Bambang, Kali Pasir, Way Bambang Tengah, km 24.	Patrol/Survey	11 Jul	18 Jul	8	33,00		Signs of rhino. Encountered forest product (resin) theft.
Limus, Sinar Ogan, Hulu Way Belambangan, Duku Banyak, Way Belambangan Tampang, Tanjung Mas, Sukadamai	Patrol/Survey	24 Jul	31 Jul	8	28,00		Signs of rhino. Encountered fish or other wildlife collection.

Bangun sari, Suka Damai, Tanjung Mas, Way Blambangan, Way Tinggal, Way Sleman, Blimbing, Bengkumat.	Patrol/ Survey	11 Aug	22 Aug	12	43,00	Signs of rhino in Way Blambangan.
KM 30, Hulu Way Bambang, KM 24	Patrol/ Survey	26 Aug	30 Aug	5	18,00	Signs of rhino (footprints and tracks). No illegal poaching nor forest disturbance.
Km 18, Way Pemerihan Tengah, Siwalana.	Patrol/ Survey	09 Sep	13 Sep	5	12,00	No rhino sign. No timber theft encountered.
Belimbing, Sinar Harapan, Pengekahan, Way Pengekahan, Way Kawat, Way Ru, Way Belimbing.	Patrol Arrestment	16 Sep	23 Sep	8	52,00	Arrest 7 suspects of forest encroachment, destroyed 13 illegal settlements in encroachment areas and chocolate and coffee plantations more than 1 hectare.
Way Pemerihan, Hulu Way Bambang, Km.22, Km. 21.	Patrol/ Survey	06 Jul	13 Jul	8	31,00	Signs of rhino around road of Sukaraja – Bengkumat
Km 22, 21, 18, Hulu Way Bamban, Way Pemerihan, Km 28.	Patrol/ Survey	20 Jul	27 Jul	8	28,00	Signs of rhino around road of Sukaraja – Bengkumat
Limus Peros, Hulu way blambangan, Blambangan muara, Way tinggal, Blimbing.	Patrol/ Survey	11 Aug	22 Aug	12	43,00	No rhino sign.
Pal 50, Hulu Way Bambang, KM. 29.	Patrol/ Survey	26 Aug	30 Aug	5	15,00	Signs of rhino (old and new).
SP 3, Mendati, Peg. Kuyung, Hulu Way Mendati, Krengseng, Hulu Way Rilau.	Patrol/ Survey	11 Sep	18 Sep	8	12,00	Direct sighting female and infant rhino. Encountered a new forest encroachment in Peg. Kuyung Hulu Way Mendati.
SP 3, Mendati, Peg. Kuyung, Hulu Way Mendati, Krengseng, Hulu Way Rilau.	Patrol/ Survey	26 Sep	30 Sep	5	12,00	Direct sighting rhino and its signs.
Kubu Perahu, Hulu Way Tenumbang, Hulu Way Mahnai, Hulu Way Krui.	Patrol/ Survey	10 Jul	18 Jul	9	28,00	Signs of rhino, tapir, and elephant.
Way Telemak, Way Ngambur, Way Mendati	Patrol/ Survey	20 Jul	25 Jul	6	18,00	Signs of rhino, tiger, and tapir.
Km 21, Way Bambang, Km 26.	Patrol/ Survey	26 Aug	30 Aug	5	8,00	Signs of sumatran rhino and tiger.
Km 26, Way Bambang, Km 22.	Patrol/ Survey	11 Sep	17 Sep	7	9,20	Signs of rhino.
KM 29, Hulu Way Bambang.	Patrol/ Survey	26 Sep	30 Sep	5	7,60	Signs of rhino, tapir, and other wildlife.

Peninggeman, Umbul Papak, Giri Toto, Muara Dua, Pesanguan, Purwosari, Penyantun, Pedamaran, Teluk Harapan, Kekabu.	Patrol	25 Aug	31 Aug	7	30,50	Encountered many new encroachment areas, especially in Muara Dua, Pesanguan, Penyantun, Purwosari, and Pedamaran.
Hulu Way Marang, Hulu Way Ngambur, Hulu Way Biha.	Patrol/ Survey	11 Sep	20 Sep	10	38,60	Signs of rhino in Way Biha (footprints and scratches).
KM 22, Way Bambang, Way Pemerihan.	Patrol/ Survey	13 Jul	20 Jul	8	60,00	No rhino sign.
Ds. Tumpak Bayur, Ds. Peninggeman, KM.22, s/d Km.18.	Patrol/ Survey	04 Aug	10 Aug	7	15,00	Meeting with local people of Tumpak Bayur and Peninggeman. Signs of rhino in KM 22.
Tampang, Belimbing.	Patrol	11 Aug	22 Aug	12	40,00	Signs of sumatran rhino and tiger.
Kupang Hulu	Patrol Arrestment	10 Jul	18 Jul	9	18,00	Arrest 3 suspects of forest encroachment.
Pematang Langgar, Way Tembulih, Hulu Way Rilau, Krengseng, Way Mendati.	Patrol/ Survey	21 Jul	27 Jul	7	28,00	Signs of sumatran rhino and tiger.
Tampang, Tanjung Mas, Duku Banyak, Way Belambangan, Pos Belambangan Muara, Pos Sekawat, Tampang Tua.	Patrol/ Survey	11 Aug	20 Aug	10	30,00	Signs of rhino, tapir, and deer.
Way Pemerihan, Way Canguk, Hulu Way Canguk, Hulu Way Pemerihan, Peninggeman, Bupper Lama.	Patrol/ Survey	25 Aug	01 Sep	8	26,50	No rhino sign. Except tiger and tapir.
Tampang, Bangun Sari, Sinar Ogan Kec. Pematang Sawa, Tanggamus.	Patrol/ Survey	11 Sep	15 Sep	5	0,80	No rhino sign.
Tampang Pasar, Tampang Muda, Sukadamai, Tanjung Mas, Way Blambangan.	Patrol/ Survey	25 Sep	02 Oct	8	20,00	No rhino sign.
Q4 (Ocotber - December)						
Pemerihan, Sumberrejo, Bengkumat, Krui dan sekitarnya.	Intelligence	01 Oct	10 Oct	10	120.00	Investigation on 7 suspects of forest encroachment. Evidence has extended to Liwa District Attorney in Krui.
Kotaagung, Tampang, Sinar Ogan, Penganan, Kaur Gading, Belimbing	Intelligence	13 Oct	21 Oct	9	120.00	Identified owner of "locok" and two men who often sewing timber in Sinar Ogan, TNWK.

Tampang, Karang Berak, Wonosobo, Umbul Kuyung, Suoh	Intelligence	03 Nov	11 Nov	9	95.00	Encountered forest encroachment in Sinar Laut - Karang anyar 45 hectares of areas, illegal logging in Suoh, and indications of illegal poaching of elephant and deer.
Pemerihan, Bengkunt, Pematang langgar, Panji Wayang, dsk.	Intelligence	15 Nov	23 Nov	9	100.00	Identified people who saved elephant tusk and pieces of tiger skin.
Way Haru, Sumberejo, Bengkunt, Tenumbang dsk.	Intelligence	07 Dec	14 Dec	8	95.00	There's 7 men in Way Haru presumed has keeping traditional gun ("locok") for deer poaching and 2 elephant tusk collectors.
Tampang, Kaugading, Sugiwaras, Penyantun, Peninggeman, Sukaraja dsk.	Intelligence	20 Dec	28 Dec	9	80.00	Encountered 2 corpses of deer in Belimbing area. Illegal logging in Muara dua, Sukaraja Atas, and Talang Sembilan areas.
Panji Wayang, Panama, Hulu Way Ngambur, Bundik, Hulu Way Telma, Kubu Kulit, Mendati dsk.	Patrol/ Survey	03 Nov	12 Nov	10	18.40	Old signs of rhino and elephant. Data collection of encroachers in Panama, Panji Wayang and Kubu Kulit areas.
Mendati Jaya, Krengseng, Hulu Way Rilau, Pematang Langgar dsk.	Patrol/ Survey	05 Dec	13 Dec	9	34.50	Rhino signs (scraps, footprints).
Pemerihan, Hulu Way Pemerihan, Km. 26 dsk.	Patrol/ Survey	23 Dec	28 Dec	6	24.30	No rhino sign. Found prints of elephant and other wildlife.
Way Pemerihan, Siwalana dan sekitarnya.	Patrol	02 Oct	08 Oct	7	24.00	No illegal poaching. No illegal logging. Encroachment activity still going on but encroachers ran away when RPU team approached. No new forest encroachment.
Sumberejo, Way Pemerihan, Talang Rohmat, Leter U, Leter S, Sumbersari.	Patrol/ Survey	12 Oct	17 Oct	6	21.00	No illegal poaching and illegal logging encountered.
Sukaraja Atas, Peninggeman, Giri Totok, Muara dua, Pesangan, Tejomulyo, Penyantun, Purwosari, Way Nipah, dsk	Patrol/ Survey	05 Nov	12 Nov	8	40.00	No rhino sign. Encroachment activities still going on and this time encroachers are having harvest.

Karang Berak, Umbul Tasik, Umbul Kapuk, Umbul Gajah, Karang Anyar, Teluk Bayur, Sinar Laut, Sidodadi, Way Nipah, dsk.	Patrol/Survey	19 Nov	26 Nov	8	40.00	No rhino sign. Encountered forest encroachment. Encroacher begins to plant with rice.
Sadau, Talang Mabar, Bukit Pandan, Hulu Sambat kanan, Hulu Air Sambat Kiri, Bukit Serdang, Pegunungan Danau, Km 24, Kedataran dsk.	Patrol/Survey	06 Dec	16 Dec	11	62.00	No rhino sign. Encountered signs of deer poaching, fish theft and swallow's nest. Encountered also resin theft and forest encroachment.
Pal 50, Tulung bambang, Hulu way bambang, Talang enam, Talang tumpak, Sidomulyo dan sekitarnya	Patrol/Survey	23 Dec	28 Dec	6	35.00	No rhino sign. No illegal poaching. Encountered timber theft. Encroach activities in Talang Aman/ Talang Tumpak areas has decreased.
Panji Wayang, Hulu Way Telemek, Kubu kulit, way Mendati, SP II dan sekitarnya.	Patrol/Survey	09 Oct	17 Oct	9	15.00	Rhino signs. Encountered forest encroachment (old and new).
Pematang Langgar, Hulu Way Rilau, Km.13, Siring Balak dsk.	Patrol/Survey	20 Nov	27 Nov	8	20.00	Rhino signs. Encountered timber theft and forest encroachment.
Desa Sadau, Bukit Pandan, Hulu Air Tatap, Pegunungan Hulu Nyuruk, Air Sambat, Km.30.	Patrol/Survey	05 Dec	19 Dec	15	60.80	No rhino sign only old and non active wallows. Found footprints of tapir and tiger.
KM 26, Way Pemerihan, KM 18.	Patrol/Survey	09 Oct	16 Oct	8	12.40	Rhino signs and other wildlife.
KM 30, Hulu Way Bambang, KM 50.	Patrol/Survey	04 Nov	12 Nov	9	14.00	Rhino's scratches on a tree. Also tapir's footprints. Direct sighting of 7 elephants.
Km 24, way Bambang, Km.30, dsk.	Patrol/Survey	19 Nov	26 Nov	8	12.00	Rhino signs (footprints, wallow) and Tapir.
Km 22, Way Bambang, Km.21 dsk.	Patrol/Survey	05 Dec	13 Dec	9	11.50	Signs of rhino, tapir, and tiger.
Tampang, Way Blambangan, Belimbing, Danau Menjikut, Way Sekawat.	Patrol/Survey	22 Dec	27 Dec	6	26.00	No rhino sign. Found footprints of tapir and tiger. Direct sighting deer (3).
Panji Wayang, Panama, Way Ngambur.	Patrol/Survey	05 Oct	14 Oct	10	40.00	No rhino sign.
Kubu Perahu, Hulu Way Krui, Hulu Way Mahnai, Hulu Way Tenumbang, Gunung Kemala dsk.	Patrol/Survey	05 Nov	14 Nov	10	47.00	Rhino's signs (wallow and tree twist). Also signs of tapir, tiger, and elephant.
Lampung dan Kabupaten Kaur	Patrol/Survey	05 Dec	16 Dec	12	40.00	No rhino sign. Encountered traps

Bengkulu Selatan, perbatasan Propinsi Sumatera Selatan.						targeted to large mammal. No forest encroachment and illegal logging encountered.
Pematang Langgar, Hulu Way tembulih dsk.	Patrol/Survey	23 Dec	28 Dec	6	10.00	-
Blimbing, Pengekahan, Tampang	Patrol/Survey	03 Oct	16 Oct	14	80.00	Dry wallow in Way Blambangan. Found an elephant in Pengekahan areas.
Tampang, Hulu Way Blambangan.	Patrol/Survey	04 Nov	06 Nov	3	14.00	Encountered corpse of tapir around Pematang Rantas (Way Belambangan).
Belimbing, Pemekahan. dsk.	Patrol/Survey	17 Nov	29 Nov	13	78.00	No rhino sign except footprints of elephant and Siamang.
Tampang, Pengekahan, Belimbing.	Patrol/Survey	09 Dec	21 Dec	13	85.00	Footprints of tapir, tiger, and elephant. Direct sighting of siamang, wild buffalo, etc.
Sumberejo, Way pemerihan, Way canguk, Stasiun penelitian, Way haru	Patrol/Survey	08 Oct	21 Oct	14	15.00	No rhino sign.
Tampang, Blambangan Huma, Belambangan, Duku banyak, tanjung Mas.	Patrol/Survey	05 Nov	13 Nov	9	20.00	Rhino signs.
Karang Berak, Suburahman dsk.	Patrol/Survey	21 Nov	29 Nov	9	10.00	No rhino sign.
Simpang Sadau, Pulau Beringin, Palembang, bukit Pandan, Air Sambat Kanan, Km.24, Kedataran, Bengkulu.	Patrol/Survey	05 Dec	17 Dec	13	49.00	No rhino sign except tapir. Encountered traces of illegal poaching in Bukit Pandan.
Km 30, Jalan tembus Sanggi Bengkuntat, Way Bamban Kecil, Km.26, Patok 50.	Patrol/Survey	23 Dec	30 Dec	8	20.00	No rhino sign except footprints and dung of elephant.

Way Kambas NP

Location	Activity	Start Date	End Date	Days	Length (Km)	Remarks
Q1 (January - March)						
Dusun Umbul Ogan.	Patrol	21 Jan	21 Jan	1	7	Encountered illegal poaching with one death deer that has been shot as a evidence.
Way Kanan, D1, Wako Benteng, Rawa Akar,	Patrol/Survey	14 Jan	19 Jan	6	50	Rhino's signs. Encountered fresh tracks

Location	Activity	Start Date	End Date	Days	Length (Km)	Remarks
D1.						of bird theft.
Pos Way Kanan, Camp Mini, Jembat Seling, Saporo, PLG.	Patrol/Survey	27 Jan	1 Feb	6	36	No rhino sign except elephant, bear, and tapir. Tracks between Camp Mini - Jembat Seling in good condition, on the other hand, tracks in Saporo inactive by illegal fishing.
Way Kanan, Kuala Kambas, Pedamaran, PLG.	Patrol/Survey	7 Feb	11 Feb	5	51	No rhino sign. Survey routes submerged and full of water. No illegal activity encountered.
Way Kanan Atas dsk.	Patrol/Survey	16 Feb	21 Feb	6	20	Rhino's dung and wallow. No illegal activity encountered.
Way Kanan, Camp Mini, Jembat Seling, PLG.	Patrol/Survey	27 Feb	3 Mar	5	36	No rhino sign. Area is safe.
Bungur, Rasau, Cabang.	Patrol	5 Jan	9 Jan	5	12	Encountered wood log.
D1, Gerbang Tol, Sentral Wako.	Patrol/Survey	14 Jan	19 Jan	6	28	Rhino's signs.
D2, Way Kanan, Ogai Pegadungan.	Patrol	27 Jan	1 Feb	6	52	Encountered timber theft.
Bungur, Rasau, Bungur.	Patrol	6 Feb	11 Feb	6	87	Encountered timber theft/illegal logging.
D1, Sentral Wako, Air Hitam.	Patrol/Survey	17 Feb	22 Feb	6	37	No rhino sign discovered during this rain seasons. No illegal poaching.
D2, Way Kanan, Karaoke, Perambahan.	Patrol	26 Feb	3 Mar	6	27	Encountered an arson extend about 80 - 90 hectares (2 weeks old). Bird theft.
Way Kanan, D1, Camp Siang, Sekapok Atas, Rawa Lintah.	Patrol/Survey	5 Jan	9 Jan	5	28	Rhino's signs.
Way Kanan, Kuala Kambas, Wako, B. Ujung, Rasau.	Patrol/Survey	14 Jan	19 Jan	6	76	Signs of rhino and tapir.
Pos Way Kanan, Capang, Way Batu.	Patrol/Survey	27 Jan	1 Feb	6	49	No rhino sign. Area is safe.
Camp D1, Beruang Mati, Rawa Lintah.	Patrol/Survey	6 Feb	11 Feb	6	46	Rhino's signs. Area is safe.
Way Penet.	Patrol	1 Jan	2 Jan	2	5	Area is safe.
PLG, Rawa Jambu, Permata, Camp Mini.	Patrol/Survey	5 Jan	9 Jan	5	27	No rhino sign. Encountered ex illegal fishing.
Way Kanan, Kuala Kambas, Wako, Pinang Merah, Rasau, Cabang.	Patrol/Survey	14 Jan	19 Jan	6	103	Rhino's dung. Encountered wood log.

Location	Activity	Start Date	End Date	Days	Length (Km)	Remarks
Rawa Lintah, Sekapuk, Camp Siang, D1.	Patrol/Survey	16 Feb	21 Feb	6	39	No rhino sign. No illegal activity encountered.
Muara Jaya, Pasiran, Kubu Arang, Gambas RI.	Patrol	27 Feb	3 Mar	5	17	Encountered timber theft.
D2, D1, Tanah Merah, Kali Biru Atas, Srijoden, Pos D2.	Patrol/Survey	5 Jan	9 Jan	5	22	Rhino's signs. Area is safe.
Raja Basa - Umbul Ogan.	Firearm Search	23 Jan	24 Jan	2	2	Negative.
D2, D1, Air Hitam, Gerbang Tol, Camp 5000, Penggangan Mentru, Tegal Yoso.	Patrol/Survey	27 Jan	1 Feb	6	51	Rhino's signs in Camp Siang. Area is safe.
D2, Rawa Badak, Kali Biru Atas, Pos D1, D2.	Patrol/Survey	16 Feb	21 Feb	6	34	Rhino's signs.
SRS, Jalur Kodok, Pos Way Kanan, Portal, SRS.	Patrol/Survey	26 Feb	2 Mar	5	15	No rhino sign. Area is safe.

Q2 (April - June)

Pos Way Kanan, Rawa Lintah, Kemang, D1.	Patrol/Survey	07 Apr	12 Apr	6	50	Rhino's signs. Area is safe.
Way Kambas, Way Kapuk, Way Batu, Penet.	Patrol/Survey	05 May	12 May	8	48	No rhino sign. Footprints of tiger. Encountered illegal fishing.
Muara Jaya, Way Anda, W. Gading.	Patrol	19 May	25 May	7	36	No illegal activity encountered, only ex felled tree and fired areas.
Way Kanan, Capangan, Sekapuk, Kuala Kambas.	Patrol	03 Jun	08 Jun	6	69	Area is safe.
Resort Way Kanan	Patrol	10 Jun	15 Jun	6	80	Encountered 163 illegal camps, 60 places of salty fish processing which has accommodated 107 families (363 people). Killing 58 dogs.
Susukan Baru, Sartam, Rawa Andi, Way Sukadana.	Patrol/Survey	18 Jun	24 Jun	7	33	Encountered ex arson, animal bones that had been burned, and Ex timber theft and rattan extraction.
Perambahan, Sartam, Rawa Andi, Mataram, Bungur.	Patrol	13 Apr	18 Apr	6	30	Ex timber theft in Mataram. Encountered bird theft (suspects ran away).
Susukan Baru, Ular Kadut, Meranggi, Rantau Jaya.	Patrol	20 Apr	25 Apr	6	42	Encountered a camp that often used by poacher. Timber theft.

Way Kanan, Kuala Kambas, Pedamaran, Jemat Seling, PLG.	Patrol/Survey	20 May	25 May	6	49	Footprints (2) of tiger.
Way Kanan, Opu, Rasau.	Patrol/Survey	03 Jun	08 Jun	6	43	Signs of rhino and tiger. Ambushed illegal logging.
Posdal, Way Kanan, Rawa Bulus.	Patrol/Survey	14 Jun	18 Jun	5	21	Signs of rhino. Encountered several wallows around Way Kanan river.
Bungur, Rasau, Pinang Merah.	Patrol	22 Jun	25 Jun	4	58	Defeat an illegal poaching. Encountered 2 boats loaded by wood log.
Rawa Bunder, G. Abu, Way Kanan Atas.	Patrol/Survey	08 Apr	10 Apr	3	19	Rhino's signs around "Perambahan".
D2, Jl. Jorden, Tarsan, R. Badak, D2.	Patrol/Survey	21 Apr	25 Apr	5	30	Signs of rhino, tapir, and tiger. Patrol routes were Area is safe.
Posdal, Perbatasan TN.	Patrol	16 May	17 May	2	7	-
TNBBS = Seksi Konservasi Liwa, Lampung Barat.	Other	05 Jun	08 Jun	4	0	-
PLG, Kali Batin, Way Kanan.	Patrol/Survey	15 Jun	20 Jun	6	20	Old wallow (<6 months).
Bungur, Rasau, Cabang.	Patrol	22 Jun	24 Jun	3	73	Ambushed illegal logging.
D2, Way Kanan Atas, Perambahan.	Patrol/Survey	08 Apr	12 Apr	5	16	Footprints and scratches of tiger.
D2, Rawa Badak, Macan Loncat, Talang Aceh, C. Opu, C. Penanggungan, Bungur.	Patrol	04 May	10 May	7	72	Indications of human encroached the forests and burning area in 2 places. Found also tiger's signs.
Way Kanan, Rawa Badak, Wir.	Patrol/Survey	14 Jun	19 Jun	6	25	No rhino or tiger sign been found (it's rained). Area is safe.
Rawa Lintah, Sekapuk, Beruang, R. Kemang.	Patrol/Survey	21 Apr	25 Apr	5	38	Signs of rhino and tiger.
Camp D1, W. Wako, Rasau.	Patrol/Survey	03 Jun	08 Jun	6	34	Signs of rhino and tiger. Encountered traces of illegal logging.
Way Sukadana.	Patrol	13 Jun	14 Jun	2	2	No illegal activity (Area is safe).
Camp C, Sidodadi, Braja Yekti.	Patrol/Survey	15 Jun	18 Jun	4	16	No rhino sign. No illegal activity.
D2, Srijarden, Camp Tarzan, Camp Sore, D1.	Patrol/Survey	07 Apr	11 Apr	5	30	Fresh footprints of rhino (small size). Footprints of tiger and tapir. Area is safe.
Rawa Kerek, Kali Batin, Posdal.	Patrol	13 Apr	14 Apr	2	12	Arrest 2 suspects of fish theft. Encountered felled trees.
Posdal, Way Kanan Atas, Perambahan.	Patrol/Survey	21 Apr	26 Apr	6	22	Rhino's food and footprints of tiger.

Sartam, Rawa Andi, Camp. Opu, Mundu, Sumpah, Bincung, Ogay.	Patrol	04 May	11 May	8	57	Encountered point of arson and 2 small boats belong to local fisherman.
Pos Way Kanan, Kuala Kambas.	Patrol	13 May	15 May	3	37	Area is safe.
Camp D1, Camp 5000, Karaoke, RI Gambas.	Patrol/ Survey	19 May	25 May	7	48	Signs of rhino and tiger.
Way Kanan, Kuala Kambas	Patrol	29 May	30 May	2	44	-
Camp Mini, Jembat Seling, PLG.	Patrol/ Survey	03 Jun	07 Jun	5	27	Patrol route unachievable well.
D1, Air Hitam, Murai, Beruang Mati, L. Pecah, Rawa Lintah.	Patrol/ Survey	04 May	10 May	7	51	Signs of rhino. Encountered no illegal activity.
D2, Tarsan, Wako Benteng, Sekapuk, Kuala Kambas.	Patrol/ Survey	19 May	25 May	7	49	Signs of rhino and tiger.

Q3 (July - September)

Tugu Kuning, Rumbia.	Intelligence	5 Jul	6 Jul	2	0,00	-
Rumbia, Rantau Jaya.	Intelligence	5 Sep	5 Sep	1	0,00	Team got the information needed.
Pos Way Kanan, D2, Rawa Badak, Rawa Etek Ewer, Jembat Ireng, Gubuk Abu (Perambahan).	Patrol/ Survey	5 Jul	10 Jul	6	22,00	Scratches of tiger and tapir, and also tracks of group of elephant. Encountered arson and ex-arson.
D2, Rawa Badak.	Patrol/ Survey	23 Jul	24 Jul	2	10,40	Signs of rhino.
Bungur, Penanggungan, Nibung, Rajawali.	Patrol	8 Aug	12 Aug	5	107,00	Traces of timber theft and head of death wild pig as evidence of illegal poaching.
Way Kanan, Kuala Kambas, Pedamaran, PLG.	Patrol/ Survey	23 Aug	27 Aug	5	60,00	No rhino sign. Arrest 11 suspects of fish theft.
JICA, PLG.	Patrol	14 - Jul	14 - Jul	1	4,50	No trap encountered. Direct sighting a wild elephant.
D1, Wako Benteng, Kali Biru, D2.	Patrol/ Survey	23 Jul	25 Jul	3	14,00	Signs of rhino and other wildlife.
Toto Projo.	Intelligence	7 - Jul	8 - Jul	2	0,00	Defeat illegal logging.
Transpram II, Perambahan.	Intelligence	9 Jul	10 Jul	2	0,00	No illegal poaching.
Tugu Kuning, Rumbia.	Intelligence	11 Jul	12 Jul	2	0,00	Succeeded in arresting 2 suspects of illegal logging.
Tugu Kuning, Rumbia.	Intelligence	15 Jul	15 Jul	1	0,00	Suspect (target suspect) has gone out of the village.
Ds. Tanjung Tirto, Bungur, Lampung Timur.	Arrestment/ Investiga- tion	17 Jul	18 Jul	2	0,00	Arrest a suspect of illegal logging (the case in occurred in 2004).

Susukan Baru, Way Andi, Tidung.	Patrol	31 Jul	4 Aug	5	21,60	Ex- arson.
D1, Wako Benteng, D1.	Patrol/ Survey	10 Aug	15 Aug	6	26,60	Signs of rhino and other wildlife. No animal trap.
Cabang, Rasau, Way Bincung, Tutung.	Patrol	31 Aug	3 Sep	4	27,80	Defeat an effort to hunt and illegal fishing. Encountered "senjata api locok" as evidence of illegal poaching.
Camp D1, Sentral Wako, Way Bincung, Tutung.	Patrol/ Survey	11 Sep	17 Sep	7	35,50	Rhino's signs and other wildlife.
Way Kanan, Kalibiru, D2, Way Kanan.	Patrol/ Survey	20 - Sep	22 - Sep	3	5,60	Rhino's signs. Defeat fish theft.
Pos Way Kanan, D1, Beruang, Kali Biru.	Patrol/ Survey	14 Jul	19 Jul	6	37,20	A lot of rhino's signs.
D1, Camp Siang, Kemang, D1.	Patrol/ Survey	23 Jul	25 Jul	3	16,10	Rhino signs.
D2, Jl. Srijorden.	Patrol/ Survey	31 Jul	5 Aug	6	25,50	Found only wallow.
Camp D2, Way Bincung, Ogay.	Patrol/ Survey	8 - Aug	13 - Aug	6	51,70	Signs of rhino and other wildlife. Encountered ex arson and illegal poaching.
Muara Jaya, Gunung Krikil, Toto Projo	Patrol	22 Aug	26 Aug	5	18,20	Encountered traces of timber theft. Defeat group of local people to collect grass.
D2, Rawa Badak.	Patrol/ Survey	30 Aug	30 Aug	1	9,50	Signs of rhino and tapir.
D2, Rawa Badak.	Patrol/ Survey	30 Aug	30 Aug	1	9,50	Rhino's dung in D2, also Tapir's sign.
Binjai, Kali Batin, Plang Ijo.	Patrol/ Survey	1 Sep	5 Sep	5	12,10	Rhino's signs above bridge of Binjai.
Pos Way Kanan, D1, Camp Wako Benteng.	Patrol	20 Sep	23 Sep	4	32,30	Area is safe.
Muara Jaya, Pasiran, Way Andi, Meranggi.	Patrol	6 Jul	10 Jul	5	19,30	Encountered ex timber theft. Arrest suspect of fish theft.
D2, Canguk, Tarsan, Kemang, D2.	Patrol/ Survey	14 Jul	19 Jul	6	23,50	Rhino's signs.
Rasau Pos, Pinang Merah, Rasau Atas, Rasau Pos.	Patrol/ Survey	31 Jul	4 Aug	5	13,40	Signs of rhino, elephant, and tiger.
D1, Wako Benteng, Wako Kali, Wako Pes.	Patrol/ Survey	22 Aug	27 Aug	6	58,50	Rhino's sign. Arrest suspect of fish theft.
D1, Camp Sore, Kali Biru, D2.	Patrol/ Survey	1 Sep	6 Sep	6	17,60	Rhino's sign.
Tawon, Ulung-Ulung, Temon, Way Kanan Aats, Abu.	Patrol/ Survey	11 Sep	15 Sep	5	22,20	Rhino's sign. Encountered fish theft, deer trap, and arson.
Mini, Saporo, PLG.	Patrol/ Survey	6 Jul	9 Jul	4	27,50	Signs of elephant, tapir, and tiger. No illegal activity.

D2, Rawa Badak, Tanah Tinggi, Sirjoden, Pos D2.	Patrol/Survey	14 Jul	19 Jul	6	27,00	Rhino's sign.
D2, Jeruk, Sawa Badak.	Patrol/Survey	23 Jul	26 Jul	4	18,00	Signs of rhino and other wildlife.
D2, Rawa Badak, C. Rotan, Kali Biru Atas, Pos D2.	Patrol/Survey	10 Aug	15 Aug	6	23,00	Signs of rhino, elephant, tapir, and tiger.
Tanah Tinggi.	To Make Well	20 Aug	25 Aug	6	14,50	Succeeded in making a well and found good and consumable spring.
Jambuan, Alpa, Margahayu.	Patrol	18 Aug	19 Aug	2	14,50	-
Pos Way Kanan, Rawa Gajah, Ulung-Ulung, Simpang Tawon.	Patrol/Survey	2 Sep	7 Sep	6	15,00	Signs of rhino, elephant, tapir, and tiger.
Sartam, Kali Pasir, Tegal Yoso.	Patrol	11 Sep	14 Sep	4	12,00	Encountered location of trap setting and group of poachers.
Rawa Kerek, Plang Ijo.	Patrol	15 Sep	15 Sep	1	22,00	Encountered traps.
Perambahan, Rawa Kerek, JICA, Plang Ijo.	Patrol	19 Sep	20 Sep	2	12,00	Encountered animal traps, timber theft, and corpses (wild pig and deer)

Q4 (October - December)

Rumbia, Gaya Baru.	Collect Information	29 Nov	3 Dec	5	0.00	Gained information about poachers.
Way Kanan, Way Wako.	CSI (Crime Scene Investigation)	30 Nov	2 Dec	3	22.00	Rhino death caused it had been shot one month ago. Found also other rhino's signs.
Perambahan, Margahayu, PLG, GN.	Patrol	10 Oct	16 Oct	7	0.00	No illegal poaching.
PT. NTF.	Patrol	19 Oct	19 Oct	1	0.00	Poachers discontinue their poaching activity.
PLG, Jalur Leter T.	Patrol	20 Oct	20 Oct	1	0.00	Arrest 13 suspects of illegal fishing.
Rawa Bunder (Perambahan)	Elephant Evacuation	31 Oct	1 Nov	2	0.00	Elephant has evacuated to SRS but not survived.
Perambahan, Tegal Yoso.	Patrol	3 Nov	7 Nov	5	0.00	Area is safe.
Susukan Baru, Sartam, Serayu.	Patrol	8 Nov	10 Nov	3	22.00	Arrest 2 suspects of timber theft and 4 encroachers.
Way Kanan, Camp C, PLG, Susukan Baru.	Patrol	24 Nov	28 Nov	5	49.00	Encountered fish theft and animal trap (wires) targeted on wild pig and deer.
Camp D1, Wako, Camp D1.	Patrol/Survey	8 Dec	13 Dec	6	54.60	Rhino signs. Encountered signs of illegal poaching.
Pos Way Kanan, Kuala Kambas.	Patrol Air	12 Oct	16 Oct	5	52.60	No poacher trespassed the guard pos.
Camp D1, Camp Sore, Wako Benteng, Sentral	Patrol/Survey	3 Nov	7 Nov	5	49.70	Direct sighting rhino and other rhino's signs.

Wako.						Encountered spots fire in patrol route.
PLG, Karang Sari, Lapangan Kijang, PLG.	Fire Extinguishing	13 Nov	14 Nov	2	14.00	Fire was out.
Rantau Jaya.	Intelligence	17 Nov	17 Nov	1	0.00	-
Braja Yekti.	Intelligence	19 Nov	19 Nov	1	0.00	Gained information that some people of Braja Yekti were doing hunting in PLG areas.
GN, Camp Saporo, Braja Kencana.	Patrol	25 Nov	26 Nov	2	18.90	Encountered gaharu collection.
Susukan Baru, Serayu, Tegal Ombo.	Patrol	27 Nov	28 Nov	2	13.50	Encountered many cases of grass collection inside the park.
Tegal Ombo, Bungur	Intelligence	29 Nov	29 Nov	1	0.00	Gained information about timber theft and people who raised infant deer.
D2, Rawa Badak, Way Tulung Sula.	Patrol/ Survey	10 Dec	12 Dec	3	19.00	Signs of rhino, elephant, tiger. No illegal poaching.
Camp D1, Wako Benteng, Kuala Penet.	Patrol/ Survey	19 Dec	23 Dec	5	42.80	Rhino signs. Encountered and defeated poaching attempt.
Pos Way Kanan, Camp Sore, Camp Beruang Mati.	Patrol/ Survey	13 Nov	18 Nov	6	53.20	Rhino signs.
Pos Way Kanan, Ulung-Ulung, Rawa Gajah.	Patrol/ Survey	24 Nov	28 Nov	5	10.50	Prints of tapir, tiger, and group of elephants. Encountered illegal camps of fish theft.
Sartam, Rawa Andi, Sumpah, Tidung, Opu, Tegal Yoso.	Patrol	7 Dec	9 Dec	3	37.60	Identified tracks of illegal poaching.
Muara Jaya, Tegal Yoso, PLG.	Patrol	3 Nov	7 Nov	5	53.20	Arrest suspects of timber and fish theft.
D2, TKP Parmin, Panggangan, Kadut, Merangi.	Patrol/ Survey	13 Nov	16 Nov	4	30.80	Rhino's scratches in tracks D2 - Rawa Badak. Encountered arson and ex poaching.
Gambas R1, Karaoke, Mentru, Panggangan, TKP, C.5000, Gerbang Tol.	Patrol	7 Dec	9 Dec	3	49.00	-
Way Sukadana, Way Anda, Way Wako.	Patrol Motor	13 Dec	16 Dec	4	72.00	Area is safe.
Posdal, Gasbas R1, Perambahan.	Patrol	20 Dec	25 Dec	6	7.30	Inactivated animal's traps.
Sartam, TKP Parmin, Wako Atas, Rawa Anda, Tegal Yoso.	Patrol	10 Oct	14 Oct	5	72.00	Encountered forest fire, illegal poaching, and fish theft.
Plang Ijo, Bungur.	Patrol	3 Nov	7 Nov	5	24.50	Arrest 2 suspects of fish theft.

LT. PLG.	Fire Extinguishing	15 Nov	15 Nov	1	0.00	The fire was out.
Gambas R1, Gubug Arang (Perambahan).	Patrol	17 Nov	18 Nov	2	14.80	Encountered grass collection.
Pos Way Kanan, Pos D1, Wako Benteng, Wako Atas, Pos Wako.	Patrol/Survey	24 Nov	27 Nov	4	23.00	Signs of rhino, tapir, and elephant. Encountered rhino's skeleton (rhino was shot at the head).
Pos Way Kanan, Kuala Kambas, Pos Wako, Wako Atas, Macan Mati, Pos Wako.	Patrol/Survey	8 Dec	12 Dec	5	43.00	Signs of rhino, tiger, and elephant.
Simpang Tawon, Ulung-Ulung, Perambahan	Patrol/Survey	16 Nov	19 Nov	4	13.50	Signs of tapir, tiger, and elephant. Encountered fish theft.

Ujung Kulon NP

Location	Activity	Start Date	End Date	Days	Length (Km)	Remarks
Q1 (January - March)						
Blok Karang Ranjang.	Patrol	1 Jan	8 Jan	8	48	No illegal activity encountered.
Blok Kalejetan, Karang Ranjang.	Patrol/Survey	21 Jan	29 Jan	9	72	No rhino sign. Possibility rhino move to the west.
Blok Cilintang, Ciperepet, Ciramea, Cidaon, Cibunar.	Patrol	11 Feb	28 Feb	18	95	Area is safe.
Blok Cipakis Girang, Ciermokla, Kalejetan.	Patrol	6 Mar	16 Mar	11	60	No forest disturbance.
Handeuleum, Cigenter, Gardu Buruk, Kr. Ranjang.	Patrol/Survey	1 Jan	10 Jan	10	47	Rhino signs in Citerjun.
Kr. Ranjang, Kalejetan.	Patrol/Survey	20 Jan	30 Jan	11	43	Rhino signs.
Cipakis, Geundir, Cikaung Sabrang, Pamarakan.	Monitoring	2 Feb	9 Feb	8	39	No rhino sign.
Kr. Ranjang, Seuseupan, Pangorok, Bandawoh.	Patrol/Survey	11 Feb	19 Feb	9	72	Rhino's signs. Footprints from different individual.
Cikaung, Legon Pakis, Kr. Ranjang, Cibandawoh, Pangorok, Alor Gede, Kalejetan.	Patrol/Survey	1 Mar	17 Mar	17	89	Rhino's footprints (4 set) and wallows (2).
Citelang, Tj. Alang-Alang, Cangkok.	Patrol/Survey	1 Jan	10 Jan	10	22	Rhino's signs. Enable to identify rhino range in north side of the park.
Kr. Ranjang, Bandawoh, Kalejetan.	Patrol/Survey	20 Jan	30 Jan	11	67	Rhino signs.

Location	Activity	Start Date	End Date	Days	Length (Km)	Remarks
Cidaon, Citerjun, Cibom, Cibunar, Cikeusik, Bandawoh, Kr. Ranjang.	Patrol	1 Feb	10 Feb	10	61	Enabled to monitor disturbed areas.
Cigorondong, Blok Legon Pakis, Soge, Kp. Petey, Aermokla, Blok Kalejetan.	Patrol/ Survey	21 Feb	28 Feb	8	24	Rhino signs.
Cigorondong, Cikaung Sabrang, gendir, Kalejetan (Blok Ciheucit, DAS Cikalejetan).	Monitoring	5 Mar	15 Mar	11	36	Rhino's moving in the eastside of the park still concentrated around Block Aermokla.
Legon Pakis, Ciperepet (transek 4), Blok Pangorok, Laban, Kr. Ranjang.	Monitoring	25 Mar	31 Mar	7	25	Area is safe.

Q2 (April - June)

Pos Way Kanan, Rawa Lintah, Kemang, D1.	Patrol/ Survey	07 Apr	12 Apr	6	50	Rhino's signs. Area is safe.
Way Kambas, Way Kapuk, Way Batu, Penet.	Patrol/ Survey	05 May	12 May	8	48	No rhino sign. Footprints of tiger. Encountered illegal fishing.
Muara Jaya, Way Anda, W. Gading.	Patrol	19 May	25 May	7	36	No illegal activity encountered, only ex felled tree and fired areas.
Way Kanan, Capangan, Sekapuk, Kuala Kambas.	Patrol	03 Jun	08 Jun	6	69	Area is safe.
Resort Way Kanan	Patrol	10 Jun	15 Jun	6	80	Encountered 163 illegal camps, 60 places of salty fish processing which has accommodated 107 families (363 people). Killing 58 dogs.
Susukan Baru, Sartam, Rawa Andi, Way Sukadana.	Patrol/ Survey	18 Jun	24 Jun	7	33	Encountered ex arson, animal bones that had been burned, and Ex timber theft and rattan extraction.
Perambahan, Sartam, Rawa Andi, Mataram, Bungur.	Patrol	13 Apr	18 Apr	6	30	Ex timber theft in Mataram. Encountered bird theft (suspects ran away).
Susukan Baru, Ular Kadut, Meranggi, Rantau Jaya.	Patrol	20 Apr	25 Apr	6	42	Encountered a camp that often used by poacher. Timber theft.
Way Kanan, Kuala Kambas, Pedamaran, Jembat Seling, PLG.	Patrol/ Survey	20 May	25 May	6	49	Footprints (2) of tiger.
Way Kanan, Opu, Rasau.	Patrol/ Survey	03 Jun	08 Jun	6	43	Signs of rhino and tiger. Ambushed illegal logging.

Posdal, Way Kanan, Rawa Bulus.	Patrol/Survey	14 Jun	18 Jun	5	21	Signs of rhino. Encountered several wallows around Way Kanan river.
Bungur, Rasau, Pinang Merah.	Patrol	22 Jun	25 Jun	4	58	Defeat an illegal poaching. Encountered 2 boats loaded by wood log.
Rawa Bunder, G. Abu, Way Kanan Atas.	Patrol/Survey	08 Apr	10 Apr	3	19	Rhino's signs around "Perambahan".
D2, Jl. Jorden, Tarsan, R. Badak, D2.	Patrol/Survey	21 Apr	25 Apr	5	30	Signs of rhino, tapir, and tiger. Patrol routes were Area is safe.
Posdal, Perbatasan TN.	Patrol	16 May	17 May	2	7	-
TNBBS = Seksi Konservasi Liwa, Lampung Barat.	Other	05 Jun	08 Jun	4	0	-
PLG, Kali Batin, Way Kanan.	Patrol/Survey	15 Jun	20 Jun	6	20	Old wallow (<6 months).
Bungur, Rasau, Cabang.	Patrol	22 Jun	24 Jun	3	73	Ambushed illegal logging.
D2, Way Kanan Atas, Perambahan.	Patrol/Survey	08 Apr	12 Apr	5	16	Footprints and scratches of tiger.
D2, Rawa Badak, Macan Loncat, Talang Aceh, C. Opu, C. Penanggungan, Bungur.	Patrol	04 May	10 May	7	72	Indications of human encroached the forests and burning area in 2 places. Found also tiger's signs.
Way Kanan, Rawa Badak, Wir.	Patrol/Survey	14 Jun	19 Jun	6	25	No rhino or tiger sign been found (it's rained). Area is safe.
Rawa Lintah, Sekapuk, Beruang, R. Kemang.	Patrol/Survey	21 Apr	25 Apr	5	38	Signs of rhino and tiger.
Camp D1, W. Wako, Rasau.	Patrol/Survey	03 Jun	08 Jun	6	34	Signs of rhino and tiger. Encountered traces of illegal logging.
Way Sukadana.	Patrol	13 Jun	14 Jun	2	2	No illegal activity (Area is safe).
Camp C, Sidodadi, Braja Yekti.	Patrol/Survey	15 Jun	18 Jun	4	16	No rhino sign. No illegal activity.
D2, Srijarden, Camp Tarzan, Camp Sore, D1.	Patrol/Survey	07 Apr	11 Apr	5	30	Fresh footprints of rhino (small size). Footprints of tiger and tapir. Area is safe.
Rawa Kerek, Kali Batin, Posdal.	Patrol	13 Apr	14 Apr	2	12	Arrest 2 suspects of fish theft. Encountered felled trees.
Posdal, Way Kanan Atas, Perambahan.	Patrol/Survey	21 Apr	26 Apr	6	22	Rhino's food and footprints of tiger.
Sartam, Rawa Andi, Camp. Opu, Mundu, Sumpah, Bincung, Ogay.	Patrol	04 May	11 May	8	57	Encountered point of arson and 2 small boats belong to local fisherman.
Pos Way Kanan, Kuala Kambas.	Patrol	13 May	15 May	3	37	Area is safe.

Camp D1, Camp 5000, Karaoke, RI Gambas.	Patrol/ Survey	19 May	25 May	7	48	Signs of rhino and tiger.
Way Kanan, Kuala Kambas	Patrol	29 May	30 May	2	44	-
Camp Mini, Jembat Seling, PLG.	Patrol/ Survey	03 Jun	07 Jun	5	27	Patrol route unachievable well.
D1, Air Hitam, Murai, Beruang Mati, L. Pecah, Rawa Lintah.	Patrol/ Survey	04 May	10 May	7	51	Signs of rhino. Encountered no illegal activity.
D2, Tarsan, Wako Benteng, Sekapuk, Kuala Kambas.	Patrol/ Survey	19 May	25 May	7	49	Signs of rhino and tiger.

Q3 (July - September)

Blok Cigenter, Cibandawah, Kr. Ranjang.	Patrol/ Survey	2 Jul	10 Jul	9	52,00	Rhino's signs in Block Ciperepet – Karang Ranjang. No park disturbance.
Kr. Ranjang, Kalejetan.	Patrol/ Survey	23 Jul	30 Jul	8	40,00	No new sign of rhino. No forest disturbance.
Kr. Ranjang, Bandawah, Cikeusik Timur.	Patrol/ Survey	2 Aug	10 Aug	9	69,00	Two young rhino's footprints. Area is safe.
Pesisir Pantai Selatan Semenanjung, Blok Cibunar - Blok Cidaon.	Patrol/ Survey	21 Aug	29 Aug	9	54,00	New footprint in Block Cibunar. Area is safe.
Blok Cidaon, Cibunar, pesisir pantai Citelang, Cikarang, Pamageran.	Patrol/ Survey	1 Sep	9 Sep	9	48,00	Rhino's footprints presumed from different individual. No illegal activity encountered.
Kr. Ranjang, Pangukusan, Citelang.	Patrol/ Survey	21 Sep	30 Sep	10	30,00	Rhino's footprints. Area is safe.
Legon Pakis, Cipakis, Geundir, Kp. Salam, Cigenter.	Patrol/ Survey	1 Jul	10 Jul	10	28,00	Rhino's footprints. No arson.
Tj. Lame, Kr. Ranjang, Kalejetan, Cihujan, Geundir, Cipakis.	Patrol/ Survey	20 Jul	30 Jul	11	32,00	No rhino sign. No arson.
Aermokla, Cpakis, Gendir, Legon Pakis, Tanjung Lame.	Patrol	1 Aug	5 Aug	5	27,00	No arson.
Cikaung Sabrang, Cigenter, Pamageran, Cikarang.	Monitoring	6 Aug	18 Aug	13	39,00	Rhino's tracks.
Blok Cigenter, Pamageran, Cikarang, Cihandeuleum.	Patrol/ Survey	25 Aug	31 Aug	7	19,00	Rhino's footprints.
Handeuleum, Cikeuyeup, Cigenter, Gardu Buruk, Pamageran, Cikarang.	Patrol/ Survey	1 Sep	10 Sep	10	37,00	Direct sighting a rhino (teenage).
Cikaung Sabrang, Geundir, Buah Kaung, Soge, Aermokla.	Patrol	1 Jul	10 Jul	10	23,00	Area is safe.
Cikaung Sabrang, Blok Kalejetan, Hulu	Patrol	21 Jul	30 Jul	10	28,00	Area is safe.

Ciperepet, Kp. Petey, Geundir.						
Tj. Lame, P. Handeuleum, DAS Cigenter (Cigenter Atas, curug Cigenter - Muara Cigenter), Gardu Buruk.	Patrol/Survey	6 Aug	15 Aug	10	22,00	Rhino's signs. Rhino's footprints (female and teenage) in Block Leuwi Buled.
Sumur, Taman Jaya, P. handeuleum, Blok DAS Cigenter, Gardu Buruk Selatan.	Patrol/Survey	22 Aug	30 Aug	9	19,90	Enabled to monitor permanent tracks of rhino around Block Cigenter in dry season.
Sumur, Blok/DAS Cigenter, Cigenter, Transek 8, Cihandeuleum.	Patrol/Survey	1 Sep	10 Sep	10	36,62	Succeeded in monitoring rhino moving (female and teenage).
Handeuleum, Cikeuyeup, Cigenter, Gardu Buruk.	Patrol/Survey	22 Sep	30 Sep	9	29,00	No rhino sign.
Sumur, Blok/DAS Cigenter, Cihandeuleum, Blok Rawa Cikeuyeup.	Patrol/Survey	21 Sep	30 Sep	10	19,20	Rhino's sign.

Q4 (October - December)

Resort Karang Ranjang, Kalejetan.	Patrol	01 Oct	08 Oct	8	40	No forest disturbance.
Blok Cibandawoh, Pamanggangan Kecil.	Patrol	14 Oct	20 Oct	7	25	Arrest 4 suspects of crab theft.
Cigenter, Handeuleum.	Patrol	01 Nov	05 Nov	5	6	No forest disturbance.
Handeuleum, Cigenter, Muara Cikeuyeup, Cigenter (padang rumput).	Patrol/Survey	02 Dec	12 Dec	11	27	No rhino sign. Area is safe
Blok Cibom, Tanjung Layar, Ciramea, Blok Cidaon, Cijungkulon, Cibunar.	Patrol/Survey	21 Dec	28 Dec	8	40	No rhino sign. Area is safe
Handeuleum, Cikeuyeup, Cigenter, Gardu Buruk.	Patrol/Survey	01 Oct	10 Oct	10	37	Rhino's prints
Sumur, Tj. Lame, Laban, Karang Ranjang, Bandawoh.	Patrol	12 Oct	23 Oct	12	49	Arrest 4 suspects of crab theft.
Sumur, Tj. Lame, Cipakis, Cegog, Labuan, Handeuleum, Peucang, Cibom, T. Layar, Ciramea, Cibunar.	Patrol	01 Nov	20 Nov	20	32	Minimized animal and plant theft.
Sumur, Handeuleum, Cikeuyeup, Cigenter, Gardu Buruk.	Patrol/Survey	01 Dec	10 Dec	10	39	Rhino tracks in Block Handeuleum in dry season.
Sumur, Taman Jaya, Kr. Ranjang, Cidaon, Cibunar, Cikembang, Cibom, Ciramea.	Patrol/Survey	16 Dec	29 Dec	14	37	Rhino signs.

Cigenter, Balagadigi.	Patrol/ Survey	01 Oct	10 Oct	10	30	Direct sighting rhino.
Kr. Ranjang, Pangkusan, Bandawoh, Pamanggangan.	Patrol	12 Oct	22 Oct	11	20	Area is safe
Sumur, Tj. Lame, Blok Soge, Geundir, Cipakis, Curug Cikacang.	Patrol	03 Nov	04 Nov	2	5	-
Sumur, Taman Jaya, Kr. Ranjang, Transek 6, Handeuleum, Cibom, Tj. Layar, Ciramea.	Patrol	18 Dec	28 Dec	11	45	Area is safe.

PROGRAM PERSONNEL PERSONNEL PERFORMANCE - 2006

(Average Field Days / Month per-person)

Bukit Barisan Selatan NP

Name of Personnel	Number of Days	Average Field Days / Month
Afrizal SL*	139	15,44 (9 Months)
Agung S	166	15,09 (11 Months)
Agus Sulaeman	178	14,83 (12 Months)
Ayi*	140	15,56 (9 Months)
Bahara	193	16,08 (12 Months)
Budiono	172	14,33 (12 Months)
Didin Kamaludin	205	17,08 (12 Months)
Edi Rusmanto	201	16,75 (12 Months)
Hendra Wijaya	217	18,08 (12 Months)
Heryanto	190	15,83 (12 Months)
Jalisi	192	16,00 (12 Months)
Madnurzen	196	16,33 (12 Months)
Maman Suherman	192	16,00 (12 Months)
Marsum	210	17,50 (12 Months)
Merly Aroc Hulu	216	18,00 (12 Months)
Miskun	173	14,42 (12 Months)
Nang Jamadi*	140	15,56 (9 Months)
Olih*	134	14,89 (9 Months)
Rahman	203	16,92 (12 Months)
Romianto	183	15,25 (12 Months)
Sahroni	189	15,75 (12 Months)
Samsu Haryono	187	15,58 (12 Months)
Samsurizal	199	16,58 (12 Months)
Saptono	166	13,83 (12 Months)
Sudari	212	17,67 (12 Months)
Suharsono	197	16,42 (12 Months)
Suryadi	221	18,42 (12 Months)
Timbul TB	168	14,00 (12 Months)
Toho	197	16,42 (12 Months)
Uga Yogaswara	161	13,42 (12 Months)
Zen Afrial	169	15,36 (11 Months)
Zulkifli	174	14,50 (12 Months)

Note :

* Afrizal SL, Ayi, Nang Jamadi, and Olih assist the Sumatran Rhino Rescue Project (SRRP) April 2005 – March 2006.

Way Kambas NP

Name of Personnel	Number of Days	Average Field Days / Month
Agus Riadi	180	15,00 (12 Months)
Amrodi	159	13,25 (12 Months)
Aris H	179	14,92 (11 Months)
Balyan Irawadi	173	14,42 (12 Months)
Bambang Meiyono	167	13,92 (12 Months)
Bonari	173	14,42 (12 Months)
Boston Kaloko	168	15,27 (11 Months)
Daryono	178	14,83 (12 Months)
Encang Sutarna	195	16,25 (12 Months)
Ferry Agus Bangun	166	13,83 (12 Months)
Joko Iswanto	155	14,09 (11 Months)
Muslimin	178	14,83 (12 Months)
Nur Basuki	175	14,58 (12 Months)
Rosdi Hartono	178	14,83 (12 Months)
Sugondo	186	15,50 (12 Months)
Suhadi	180	15,00 (12 Months)
Sujoko	167	13,92 (12 Months)
Supriyono	151	12,58 (12 Months)
Totok Riyadi	174	15,82 (11 Months)
Yusuardi	183	15,25 (12 Months)

Ujung Kulon NP

Name of Personnel	Number of Days	Average Field Days / Month
Atib	172	14,33 (12 Months)
Dendin Martin	246	20,50 (12 Months)
Diding	213	17,75 (12 Months)
Haerudin	257	21,42 (12 Months)
M. Syamsudin*	58	14,50 (4 Months)
Mustary	190	15,83 (12 Months)
Muzakir	212	17,67 (12 Months)
Nana Suhana	240	20,00 (12 Months)
Sorhim	190	15,83 (12 Months)
Teguh Basuki	212	17,67 (12 Months)
Ujang Sukri*	105	21,00 (5 Months)
Untung Sunarko**	199	19,90 (10 Months)

Note :

* M. Syamsudin and Ujang Sukri appointed starting 1st August 2006.

** Untung Sunarko spent most of time for police investigation regarding an accident of timber theft shooting.

PROGRAM PERSONNEL 2006

Ir. Adi Susmianto, MSc.	Rhino Conservation Officer (RCO) – Indonesia
Dr. Nico van Strien, PhD	IRF/AsRSG Program Officer
Ir. Mega Haryanto, MSc.	Regional Consultant for Way Kambas NP.
Drs. Tamen R. Sitorus, MSc.	Regional Consultant for Bukit Barisan Selatan NP.
Ir. Puja Utama, MSc.	Regional Consultant for Ujung Kulon NP
Headquarter Offices (Bogor)	
Ir. M. Waladi Isnain	Program Manager
Dadan D. Subrata, DVM	Coordinator Adm. and Database Supervisor
Shanty Maullydianthi, SE, MM	Administrative and Financial Assist.
R. Dewi M. Utami, SE	Adm. and Financial Assist. For the CEPF Grant

FIELD PERSONNEL

TNBBS	TNWK	TNUK
Drs. Arief Rubianto (IC)	Andi Hari H, S.Hut(FC)	Uus Sudjasa, D. BsC.F (FC)
Suratman, S.Hut (FC))	Hartato (FA)	Andri Firmansyah (FA)
Titus Ramadhani, S.Hut (FA)	Suhadi (TL / FG)	Untung Sunarko (TL / FG)
Agus Sulaeman (TL / FG)	Sujoko (TL / FG)	Dendin Martin (TL / FG)
Didin Kamaludin (TL / FG)	Yusuwardi (TL / FG)	Mustary (TL / FG)
Heryanto (TL / FG)	Amrodi	Atib
Suharsono (TL / FG)	Agus Riadi	Diding
Samsu Haryono (TL / FG)	Agus Sulaeman	Sorhim
Saptono (TL / FG)	Balyan Irawadi	Teguh Basuki
Sudari (TL / FG)	Bambang Meiyono	Jazuli
Agung Setiono	Bonari	Lamri
Madnurzen	Boston Kaloko	Muzakir Watir
Maman Suherman	Daryono	M. Syamsudin
Rahman	Encang Sutarna	Nana Suhana
Suryadi	Ferriagus Bangun	Ujang Sukri
Zulkifli	Muslimin	
Afrizal SL	Nur Basuki	
Ayi	Joko Iswanto	
Bahara	Rosdi Hartono	
Budiono	Totok Riyadi	
Edy Rusmanto	Sujoko	
Hendra Wijaya	Sugondo	
Jalisi	Suyana (D - March 2005)	
Marsum	Yahmin (D)	
Miskun		
Merly Aroc Hulu		
Olih		
Timbul TB		
Toho Hutagalung		
Uga Yogaswara		
Ujang Suryadi (ILEU Adm.)		
Sahroni		
Samsurizal		
Zen Afrial		
Juni Effendy (D)		
S. Waja (D)		

IC = ILEU Coordinator, FC = Field Coordinator; FA = Field Administrator; TL = Team leader; FG = Forest Guard, D = Driver.