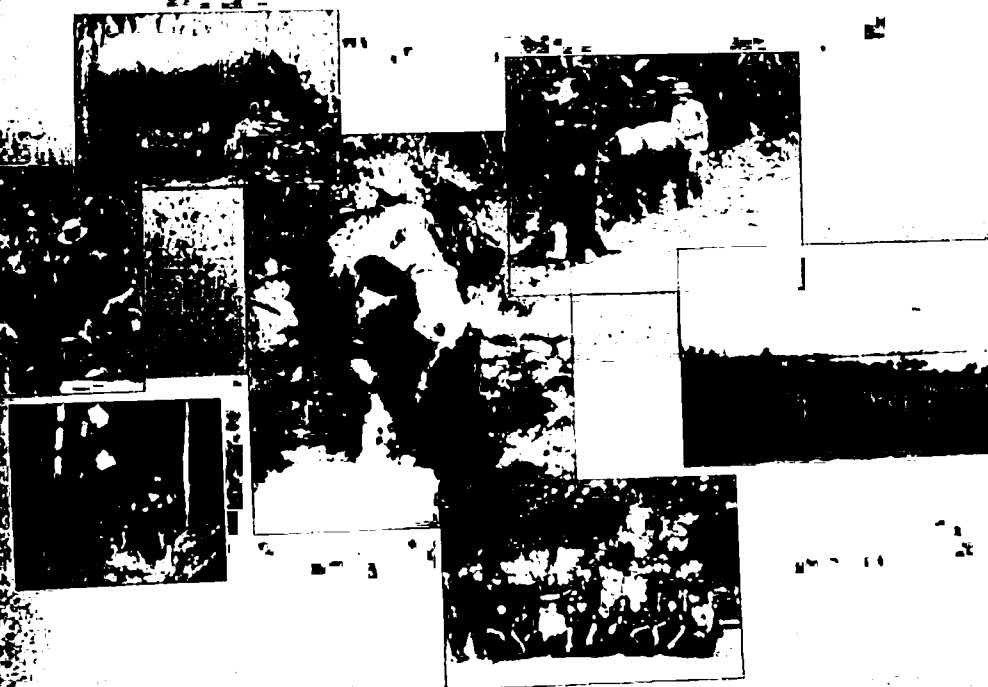


Indonesian Rhino Conservation Program – IRCP  
Program Konservasi Badak Indonesia – PKBI



# ANNUAL REPORT 2006



**Editors:**  
Ir. M. Waladi Isnain – IRCP Program Manager  
Dadan D. Subrata, DVM – IRCP Administrator and Database Supervisor  
Dr. Nico J. van Strien – IRF SE Asia Coordinator

2006, Bogor, Indonesia

# TABLE OF CONTENTS

<i>EXECUTIVE SUMMARY</i> .....	1
<i>INTRODUCTION</i> .....	2
<i>PROGRESS REPORT 2005</i> .....	5
<i>RHINO STATUS AND DISTRIBUTION</i> .....	10
<i>ILLEGAL ACTIVITIES ENCOUNTERED</i> .....	15
<i>CONCLUSIONS</i> .....	19
<i>RECOMMENDATIONS</i> .....	20
<i>QUARTERLY DATA</i> .....	21 - 24
<i>PATROL DATA 2005</i> .....	25 - 41
<i>PROGRAM PERSONNEL</i> <i>PERSONNEL PERFORMANCE - 2005</i> .....	42 - 44
<i>PROGRAM PERSONNEL</i> .....	45

## EXECUTIVE SUMMARY

The decline of the Sumatran and Javan rhino because of hunting and habitat destruction has centuries ago. The Javan rhino for example was eliminated from Malaysia in the 1930's, while the decline of Sumatran rhino was probably 50% per decade during the second half of the 20<sup>th</sup> century. The total world population of Sumatran rhino is estimated at about 300 and the species will become extinct in the next decade if there is no rigorous protection and management of all remaining populations.

The rhino's decline in South East Asia is due to a combination of reduction in habitat and overexploitation, mostly by poaching for the horn. Even now the threat of poaching continues to be high in Indonesia, hence there is a need to emphasize anti-poaching activities in the Rhino Conservation Program in this country.

The rhino is subject to poaching both from hunters with firearms and from trappers who use wire snares and other traps that maim and kill the animals. The past decline in range and numbers in Sumatra is attributed chiefly to fragmentation of its habitat through indiscriminate forest clearance and to poaching, stimulated by the illegal trade in horns, hooves and other parts.

The Indonesian Rhino Conservation Program (IRCP) [*Program Konservasi Badak Indonesia (PKBI)*] integrates governmental and non-governmental partners: the Directorate General of Forest Protection and Nature Conservation (PHKA), Ministry of Forestry of the Republic of Indonesia, International Rhino Foundation (IRF), Asian Rhino Specialist Group (AsRSG) and Yayasan Mitra Rhino (YMR). The IRCP is a continuation of the UNDP/GEF program "Conservation Strategy for Rhinoceros in South East Asia" that started in April 1995. The MoU for the IRCP was signed in Jakarta on 14 January 1998 and renewed on 2 October 2003 and currently running till 31 December 2008.

The program entails a series of approaches that include: (a) wild population protection by intensive patrolling of areas to detect traps and arrest intruders; (b) more intensive surveys and monitoring of the rhino populations throughout the core rhino areas; (c) intelligence operations to assist in the apprehension of poachers and to identify the routes used for the horn trade; (d) establishment of a rhino database system using Geographic Information System (GIS) techniques.

The involvement of a large number of field personnel makes the IRCP program very costly. Therefore, it is important to develop a simultaneous plan for sustainable long term funding of the Rhino Conservation Program.

# INTRODUCTION

## Background

A Population and Habitat Analysis conducted in November 1993 in conjunction with the IUCN SSC Asian Rhino Specialist Group (AsRSG) and Conservation Breeding Specialist Group (CBSG) revealed a significant decline in the numbers of Sumatran rhino in Indonesia. The estimates that emerged from the new data and more rigorous assessment was 215 – 319. Meanwhile, the previous estimate had been 420 – 875. The GEF project estimated, based on the assessment of total range and a summation of estimated local rhino numbers, the population of Sumatran rhino in Bukit Barisan Selatan National Park (TNBBS) in 1998 at 28 – 40, in Way Kambas National Park (TNWK) at 15 – 24, and in Kerinci Seblat National Park (TNKS) at 27 – 32.

In the year of 2004, the PKBI estimated the number of rhino in BBS National Park at 60 - 80, in Way Kambas at 20 - 27, and at 2 - 3 in TNKS. Since February 2005 no rhino's sign have been encountered in areas where RPUs operated in Kerinci Seblat National Park, and the field operations have since been terminated.

Although the Javan rhino population in Ujung Kulon National Park seems to be holding at about 40 - 50, the threat of poaching still remains. Since 1980 the number of javan rhinos in Ujung Kulon has not increased, despite rigorous protection and only few cases of rhino poaching being discovered since. The stagnation of the Javan rhino population has become a matter of global concern.

Saving the remaining population needs further alternatives. There should be a series of efforts to protect the remaining population by activating rhino patrols and strengthening anti-poaching activities, until poacher activity is reduced to the point of elimination and habitat destruction has stopped. Furthermore new populations need to be established throughout the historic range in suitable secure habitats where the rhinos have been exterminated. Semi-natural reproduction in sanctuary style centers may be an essential tool to achieve rapid expansion of numbers, till the world population has grown till at least 2500.

## Objectives, Outputs, Targets and Outcomes

### Objectives :

The main objective of the cooperation between the Directorate General of Forest Protection and Nature Conservation, International Rhino Foundation, Asian Rhino Specialist Group, Yayasan Mitra Rhino is to contribute to the long-term viable conservation and management of Indonesian rhinos (the Javan rhino – *Rhinoceros sondaicus*, and the Sumatran rhino – *Dicerorhinus sumatrensis*) and their habitats in Java and Sumatra through collaboration and coordination for planning, funding, administration and implementation of Rhino Conservation Programs.

The Indonesian Rhino Conservation Program aims:

1. To enhance the capabilities of the Directorate General of Forest Protection and Nature Conservation and associated wildlife agencies to arrest and reverse the decline of rhinos due to poacher activity and habitat disturbance toward the National and global goal of recovery of viable populations of rhino species in Indonesia.
2. To enhance bio-diversity conservation in Indonesia through technical training preparation, operational support, and a strategy for long term funding plans.
3. Local community involvements as active participate in rhino conservation efforts.

## **Outputs :**

The stated outputs of the IRCP are:

1. Establishment and operation of at least 15 Rhino Protection Units (RPUs) in Sumatra and Java.
2. More involvement of local people through recruiting into RPU personnel.
3. More accurate and reliable information on rhino distribution and population in Java and Sumatra based on facts finding of signs of rhino such as footprint, dung, wallows direct sighting and other, as survey and patrol conducted.
4. More accurate and reliable information on illegal activities within the National Park such as illegal poaching, forest encroachment, field crops, illegal fishing, and others.
5. Other information linked to the rhino conservation program in the National Park.

## **Targets :**

1. Units of RPUs fully operational and effective in Sumatra and Java.
2. Distribution of key populations of Sumatran and Javan rhino in Java and Sumatra established.
3. Methods, networks and "modus operandi" of poaching and rhino horn trade identified.
4. Effective law enforcement for rhino poaching cases and forest destruction and rhino poachers routinely convicted in Indonesia.
5. To provide a safe and secure habitat for rhinos and other wildlife, free from poaching and forest encroachment

## **Outcomes :**

1. Enhancing the capabilities of the Directorate General of Forest Protection and Nature Conservation and associated wildlife agencies to arrest and reverse the decline of rhinos due to poaching and habitat disturbance and destruction, toward the national and global goal of recovery of viable populations of all rhino species.
2. Poacher activity to be reduced to the point of elimination within areas covered by the RPUs as measured by numbers of traps and poachers detected by patrols and the numbers of rhino known to be lost.
3. Improved information on rhino numbers and distributions.
4. Improved management of the National Parks by the authorities.
5. Benefits and incentives for local communities by employing them in the RPUs.

# PROGRESS REPORT 2005

## Progress:

The IRCP operates 16 anti-poaching units in three rhino areas in Sumatra and Java, Indonesia. Eight units operate in BBS, six RPU and two Tiger Protection Units (TPUs). Rhinos and tigers distributions in the Park have considerable overlap although locally there are significant differences in distribution and abundance. The two TPUs operate in areas where there are tigers but few rhinos. However, high rhino density areas where the RPUs operate do also contain tigers so that all eight units are contributing to protection of both species. In Way Kambas, with the assistance of grants from the USFWS Rhino and Tiger Conservation Fund (RTCF), operate five RPUs, and 2 TPUs with support from the Sumatran Tiger Conservation Program till September 2005. Three RPUs operate in Ujung Kulon National Park.

Each RPU/TPU consist of four persons and is primarily an anti-poaching team that intensively patrols rhino/tiger areas to destroy traps and snares as well as to interdict or apprehended poachers. Although the basic unit is four persons, combined teams with additional personnel from the Park or from the police or other government agencies are formed when required. Especially when operating against a gang of illegal loggers a large groups is needed for security. For intelligence operations often smaller teams or individual assignments are required.

The leader of each RPU/TPU is a PHKA ranger, who has the authority to carry firearms and arrest suspected poachers. RPU's may arrest suspects in the act of committing crime. They must then, and as soon as possible, hand them over to a civil investigator including all items (to be formally confiscated by the park or police) as evidence, and they must prepare a crime report for the civil investigator. Beyond this point they have no further rights, but will be called as witness if the case is brought to court.

he other members of the RPU/TPU, including the field coordinators and administrators, have been recruited from local communities in the vicinity of the rhino areas in which the RPU operates.

Patrols and surveys are the RPU prime activities. Patrolling is to locate and apprehend illegal intruders, deactivate traps, and investigate crime scenes. Surveying is to find and locate sign of rhino, tiger and other endangered wildlife.

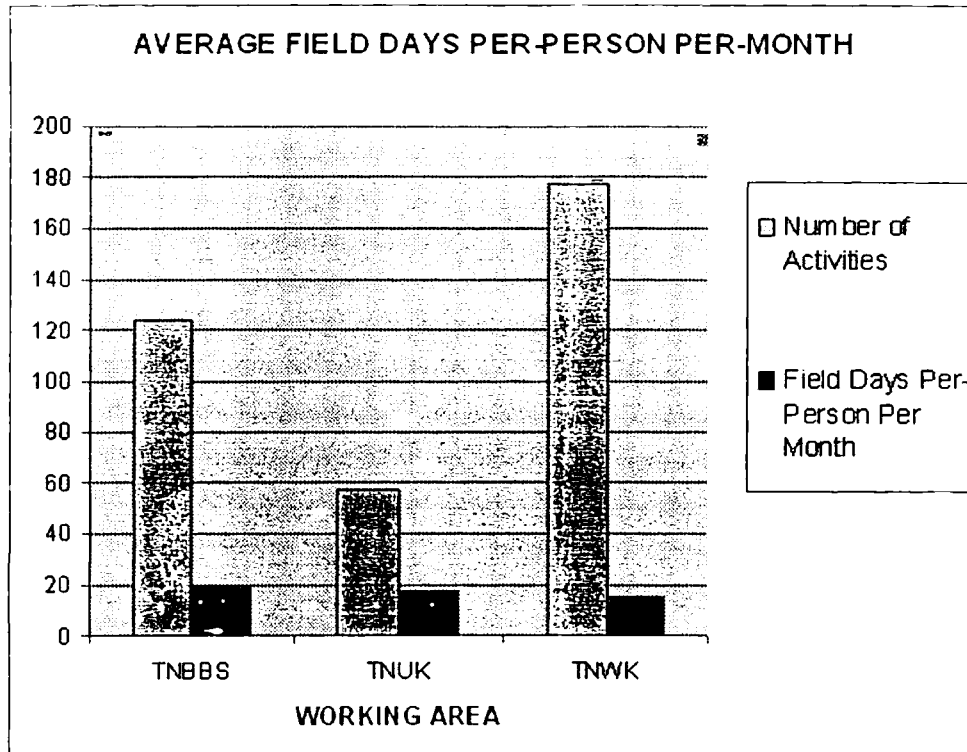
Patrolling is primarily conducted on foot but in Way Kambas and Ujung Kulon part of the patrols are by boat. The patrols vary in length from a few hours to a week. During patrols in rhino areas, rhino signs observed are also recorded but the primary goal is law enforcement and protection of the area and it's wildlife.

Surveying is also conducted on foot. The primary aim is to record rhino sign, but other wildlife species are also recorded. The information gathered is used to identify rhino areas, attempt to identify individuals, and gather other information. After each survey and patrol the team leader makes a written report to the Head of the National Park and the program HQ in Bogor..

In BBS, the IRCP in 2004 established and still operates a special mobile Intelligence and Law Enforcement Unit (ILEU) to assist the RPUs and the National Park in the detection and apprehension of poachers and to assist the prosecution of suspects till the time that the case is filed with the courts.

Project deliverables are the detailed records of patrol activities, including the number of surveys, the distance traveled for each survey/patrol (distance walked) and the duration of the time spent in the field (hours in the field). These data are used to assess the Personnel Performance as the number of field days per-person per-month. The target for the performance is at least 15 days per-person per-month on patrol for each RPU/TPU. (See *Figure 1. General Performance Parameters*).

Figure 1. GENERAL PERFORMANCE PARAMETERS

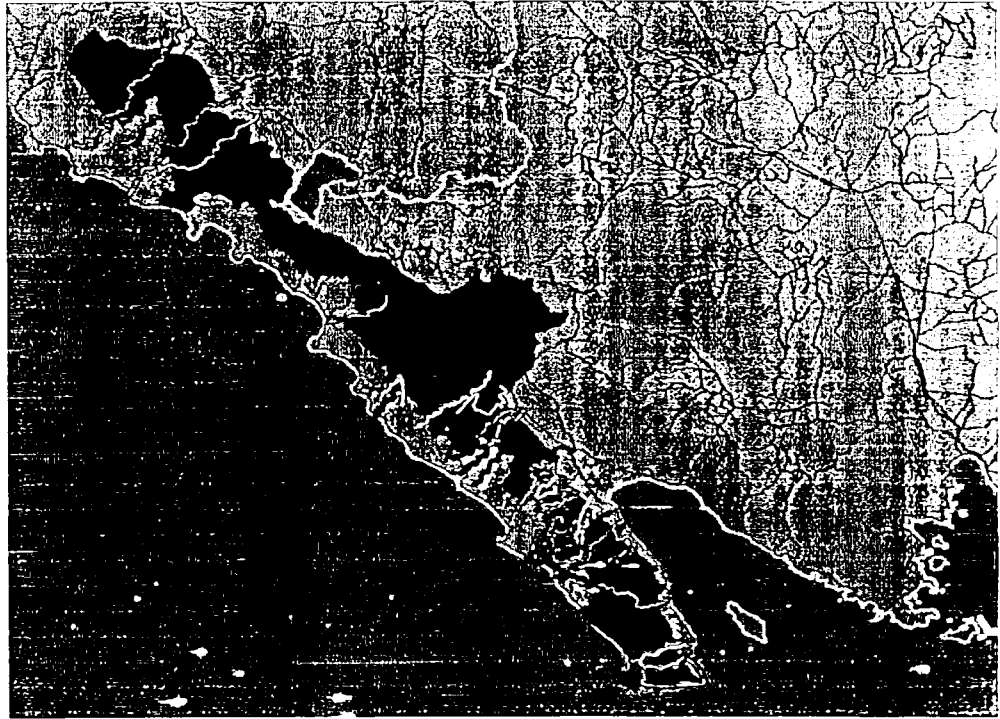


Working Area	Number of activities	Number of Patrol/Survey	Number of Days	Distance walked (Km)	Field days per-person per-month
BBS	124	73	700,00	2,497.64	20.04
WK	177	107	600,00	3,615.59	14.80
UK	57	40	422,00	1,880.30	18.27
TOTAL all areas	358	220	1.722	7,993.53	Mean 17.70

In the year 2005, Each RPU in BBS and in Ujung Kulon performed better than the minimum the target number of field days per-person per-month (15), while in Way Kambas they achieved slightly below the minimum target of field days.

**Bukit Barisan Selatan National Park.** A total of 73 surveys/patrols were conducted during the year, covering 2,497.64 km, and consuming 700 team days (excluding other activities). The number of activities of the RPU was lower than in the previous year. However, the number of field days per person per month of RPU personnel in this working area increased very significant (20,04). In this year, the RPU personnel was forced to focus on Rosa, the female rhino that had become habituated to human presence and moved more and more out of the forest, walking on the main road or visiting villages around BBS. The monitoring and guarding of Rosa involved almost two teams full time.

The southern half of BBS is most intensively patrolled, as this is the core area for the Sumatran Rhino and also many of the disturbances and encroachments occur in this part of the Park. The northern half of BBS has only very few rhinos left, and is less frequently patrolled. The whole BBS NP area is covered at least once a year to monitor the developments.

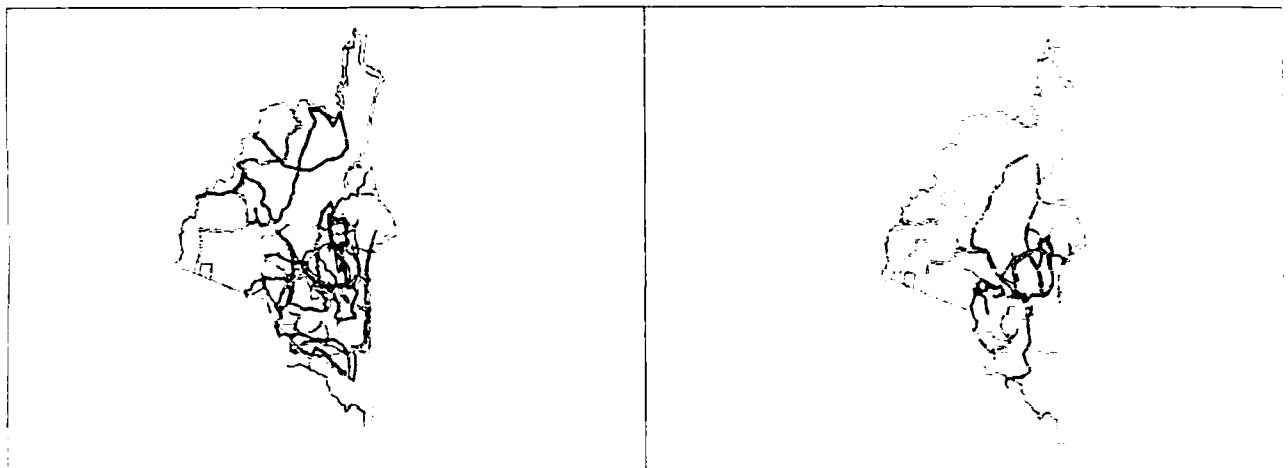


*Figure 2. Survey and Patrol Routes of RPUs in Bukit Barisan Selatan during 2005.*

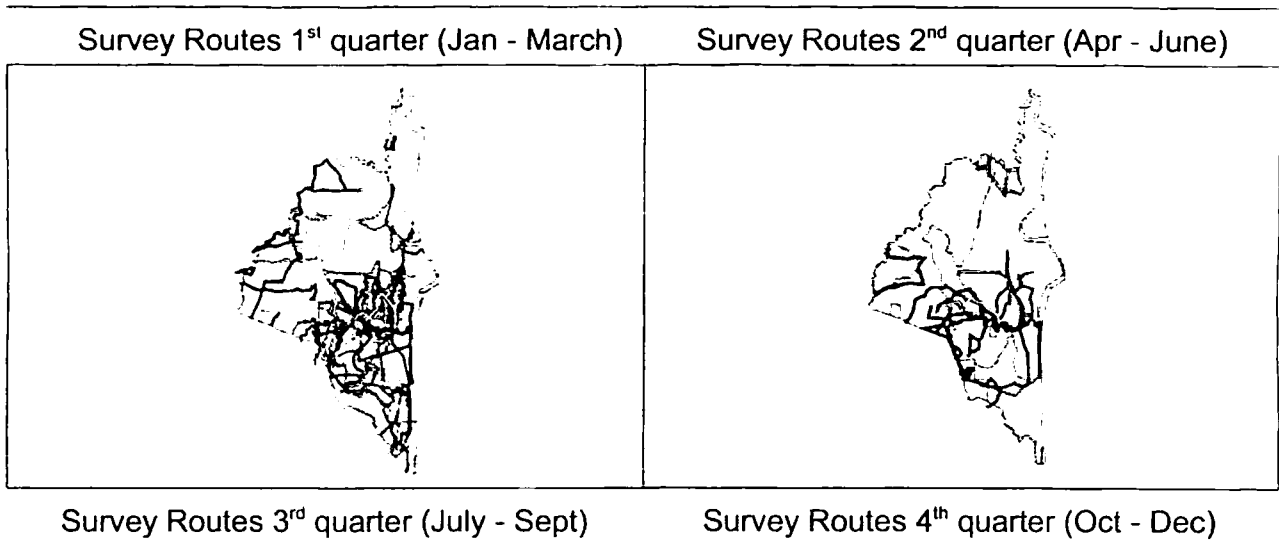
**Way Kambas National Park.** A total of 107 surveys/patrols were conducted during the year, covering 3,615.59 km, and consuming 600 team days (excluding other activities). The number of field days per-person per-month was slightly below the minimum target of 15 field days per-person per-month.

Many of the RPU activities in WKA are short operations of less than a week, such as joint operations with NP to evict encroachers, investigations on illegal trade and poaching, field patrols for destroying traps intended for rhino and tiger, etc. The RPUs participated in Expedition Way Kambas I with NP staff (a wildlife inventory program of the NP).

*Figure 3. Survey and Patrol Routes of RPUs in Way Kambas during 2005.*

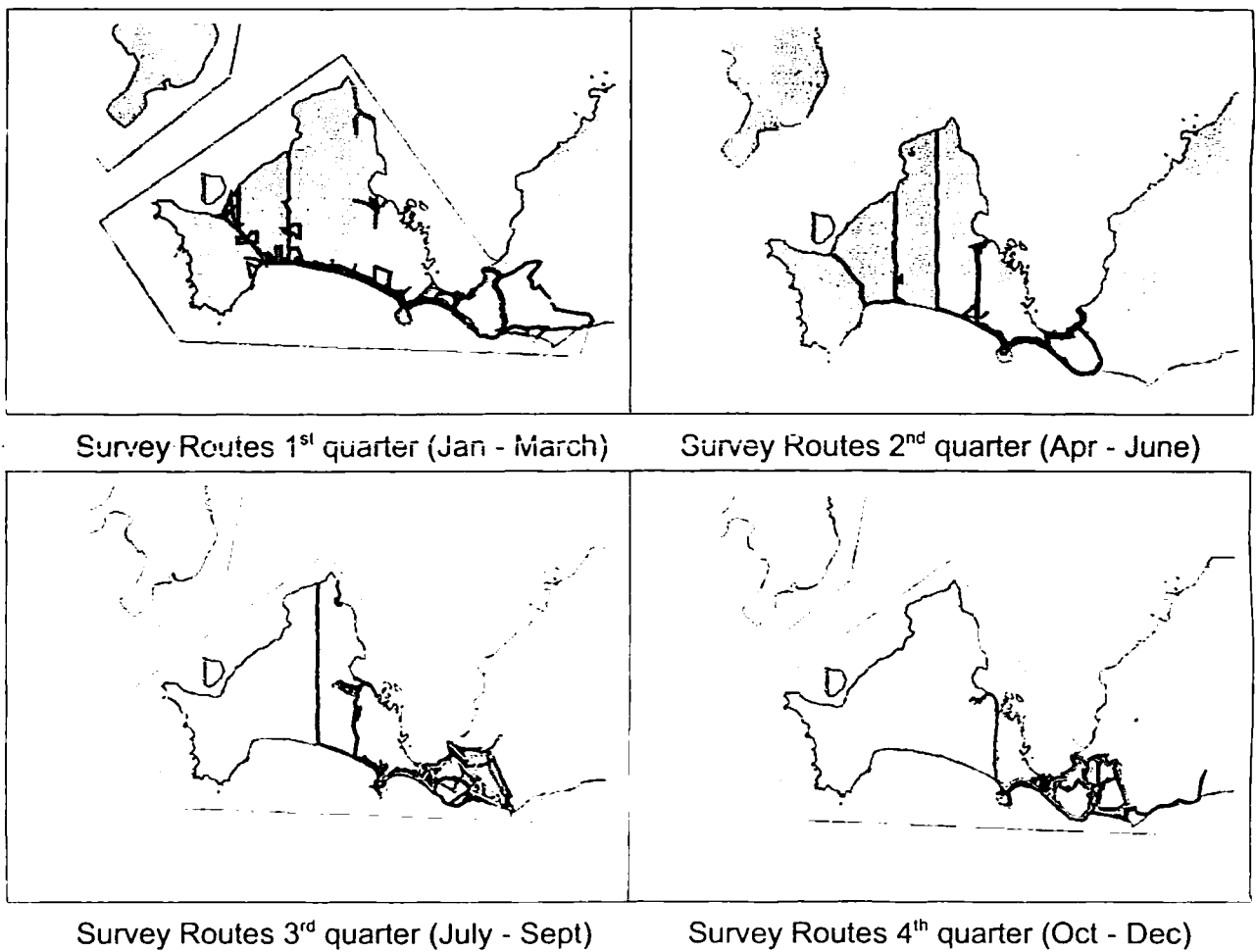






**Ujung Kulon National Park.** A total of 40 patrols/surveys were conducted during the year, covering 1.880,30 km, and consuming 422 team days (excluding other activities). Mostly the number of field days per-person per-month for the RPU's in Ujung Kulon are higher than in the other areas, because of differences in the methods of calculation field days.

*Figure 4. Survey and Patrol Routes of RPU's in Ujung Kulon during 2005.*



# RHINO STATUS AND DISTRIBUTION

## Outputs :

More accurate and reliable information on rhino distribution and population in Java and Sumatra based on facts finding of signs of rhino such as footprint, dung, wallows direct sighting and other, as survey and patrol conducted.

## Progress :

Surveys and patrols are the RPU's primary function and are conducted on foot. The primary aim is to seek signs of rhino. The information gathered is used to identify all rhino areas, to identify individuals, and to gather information on the rhino's activities like feeding, wallowing, defaecation, etc. Information on other large mammals is also collected during these surveys. At the end of each survey and patrol the team leader makes a written report.

The type and number of location of rhino signs encountered is tabulated below.

Table 1. NUMBER OF RHINO SIGN ENCOUNTERED IN 2005

Working Area	Number of locations with rhino signs					
	Footprint	Wallow	Dung	Food	Other Signs	Direct Sighting
BBS	68	34	13	8	13	3
WK	160	68	170	43	276	1
UK	140	38	19	31	7	1

Other signs include scratches, rubbings, tree twists, urine.

In BBS, during the 73 surveys/patrols in 2005, 139 independent sign of rhino were encountered including 3 sightings.

In Way Kambas, during 107 surveys/patrols in 2005, 718 independent sign of rhino were encountered including 1 sighting

In Ujung Kulon, during 140 surveys/patrols in 2005, 236 independent sign of rhino were encountered including 1 sighting.

The **RHINO DENSITY INDICATORS** table attempts to provide crude indicators of rhino density by relating the number of locations where some rhino signs were encountered with the surveying effort. This is based on the assumption that the number of some signs of rhino encountered will be proportional to the effort (field days, distance walked, etc.) of the RPUs in a certain area. The numbers in the column Density Indicator's - a rhino sign per unit of RPU activity - are therefore rough indicators of the relative densities of the rhino between the areas. See Table 2. *Rhino Density Indicator 2005*.

The Density Indicators for the Sumatran rhino in WK and BBS do not vary much between the areas, but those for Ujung Kulon are all much lower. This is most likely not an indication of a lower Javan

rhino density, but more likely caused by differences in the methods of calculation of field activities of the RPUs.

Table 2. RHINO DENSITY INDICATORS 2005

Working Area	Rhino		RPU Field Presence		Density Indicators			
	A Number of FootPrint	B* Number of Rhino Sign <sup>2</sup>	C Field Days <sup>**</sup>	D Distance Walked	A/C Rhinos/ 100 days	A/D Rhinos/ 1000 km	B/C Rhinos/ 100 days	B/D Rhinos/ 1000 km
TNBBS	68	71	700	2.497,00	9,71	27,23	10,14	28,43
TNWK	160	558	600	3.615,00	26,67	44,26	93,00	154,36

(B\*) The total number of sign (excluding footprints) of rhino found. \*\* Total number of RPU group field days.  
(Footprints are not included, because the number provided in the table is the number of individual footprints and not the number of separate tracks.)

Working Area	Rhino		RPU Field Presence		Density Indicators			
	A Number of FootPrint	B* Number of Rhino Sign <sup>2</sup>	C Field Days <sup>**</sup>	D Distance Walked	A/C Rhinos/ 100 days	A/D Rhinos/ 1000 km	B/C Rhinos/ 100 days	B/D Rhinos/ 1000 km
TNUK	140	96	422	1.880,00	33,18	74,47	22,75	51,06

## Bukit Barisan Selatan National Park.

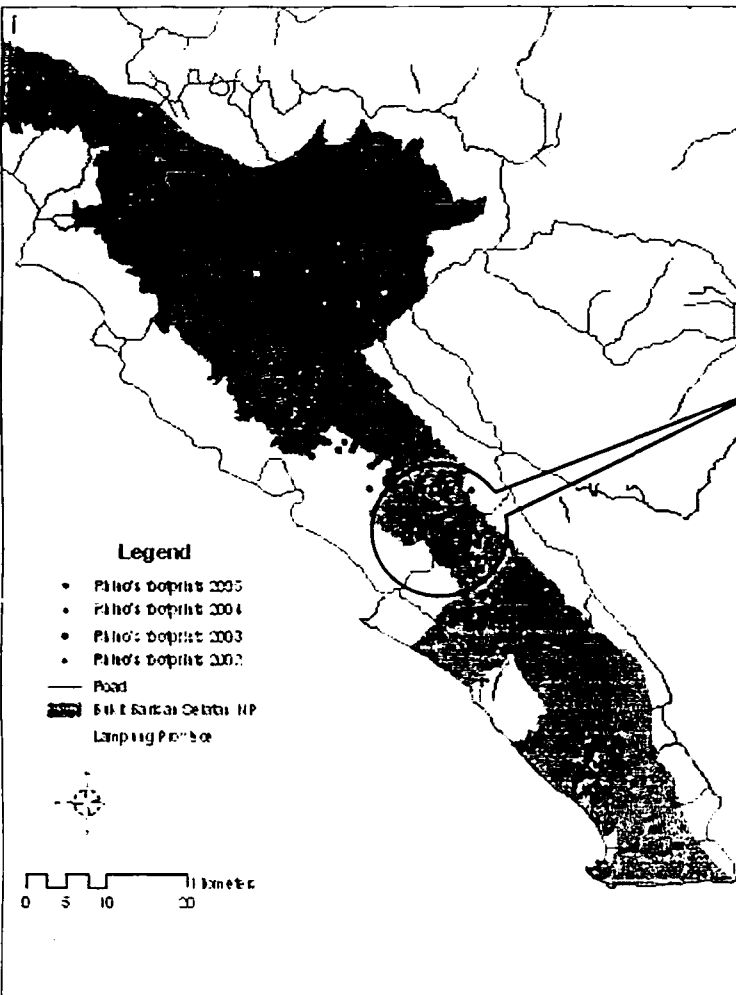
BBS is one of the highest priority areas for Sumatran megafauna in particular for the Sumatran Rhino, the Sumatran Tiger, and the Sumatran Elephant. Approximately 60 - 85 Rhinos, 40 - 50 Tigers, and about 500 Elephants inhabit BBS.

Historically, in Bukit Barisan Selatan National Park the rhino was distributed throughout the park. Rhino signs were found not just deep in the forest but also in disturbed forest and on the edges of coffee plantations.

Field observation during 1997 - 2004. The number of rhino in Bukit Barisan Selatan is estimated at 60 - 85 individuals based on the size of the area where rhinos are found and an estimate of average density that is close to the accepted 'normal' density of one rhino per 1000 Ha.

In BBS there were 40 sightings of rhino, including 16 sightings of adult females with a calf or adult males and females. There are indications of at least 11 rhinos being born in BBS during this period.

In 2005, just as in previous years, few rhino signs were found in the primary forest. At least two rhinos live around Way Mahnai and Way Tenumbang. Most were concentrated in secondary forest on the south side of the park, in a narrow area between Blimbing (the southeast point of Sumatra) and the road crossing the Park ("jalan tembus") between Krui and Liwa.



The highest densities of Sumatran rhinos are found around Way Ngambur, Way Tembuh, Way Rilau, Pematang Langgar, Way Ngaras, Way Pintau, Way Bambang, Way Canguk, Km 30, Km 32, Pal 50 and Pegunungan Cawang Haru.

### Rhinos around The Road ("Jalan Tembus") Sukaraja - Pemerihan

The Road from Sukaraja to Pemerihan, that crosses the national park in the southern part of the park for more than 30 kilometers length, is a main road that is carrying more and more traffic. The road is the main access route for the Tanggamus Regency. It is also a serious threat to the national park and its wildlife. Endangered large mammals such as rhinos, tigers, and elephants, often cross or walk on the road.

The RPU estimate that during 1998 - 2004 more than 15 rhinos, including at least 5 calves, lived in the area adjacent to the road.

Figure 5. Rhino distribution in BBS 2002 - 2005 and dense population around Sukaraja - Pemerihan.

The Rhino, Tiger, Elephant and Tapir distributions in the Park have considerable overlap although there are

significant differences in distribution and abundance throughout the Park.

During field surveys in 2005, RPU's encountered 60 locations with tiger footprints, 60 locations with Tapir footprints, and 27 locations with Elephant footprints in BBS National Park. (See Figure 6 below).

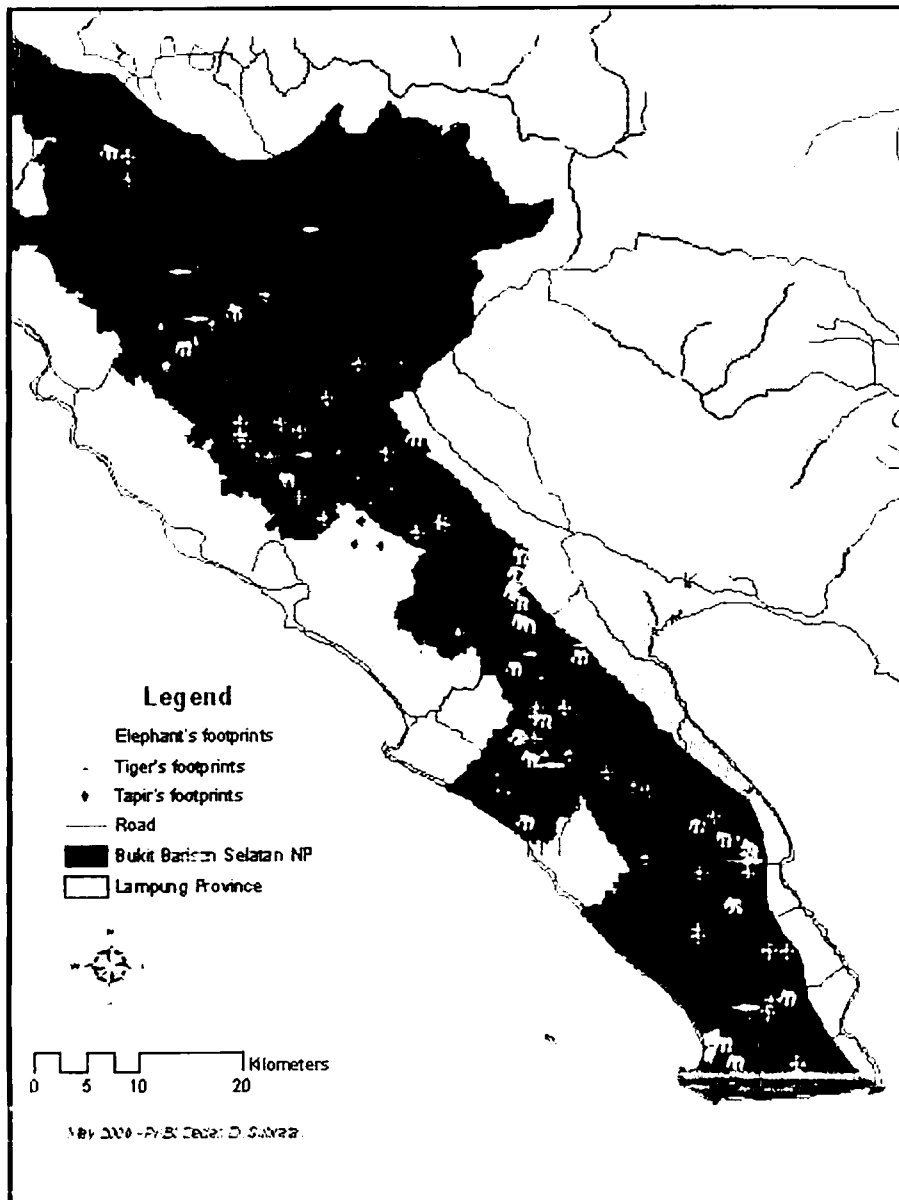
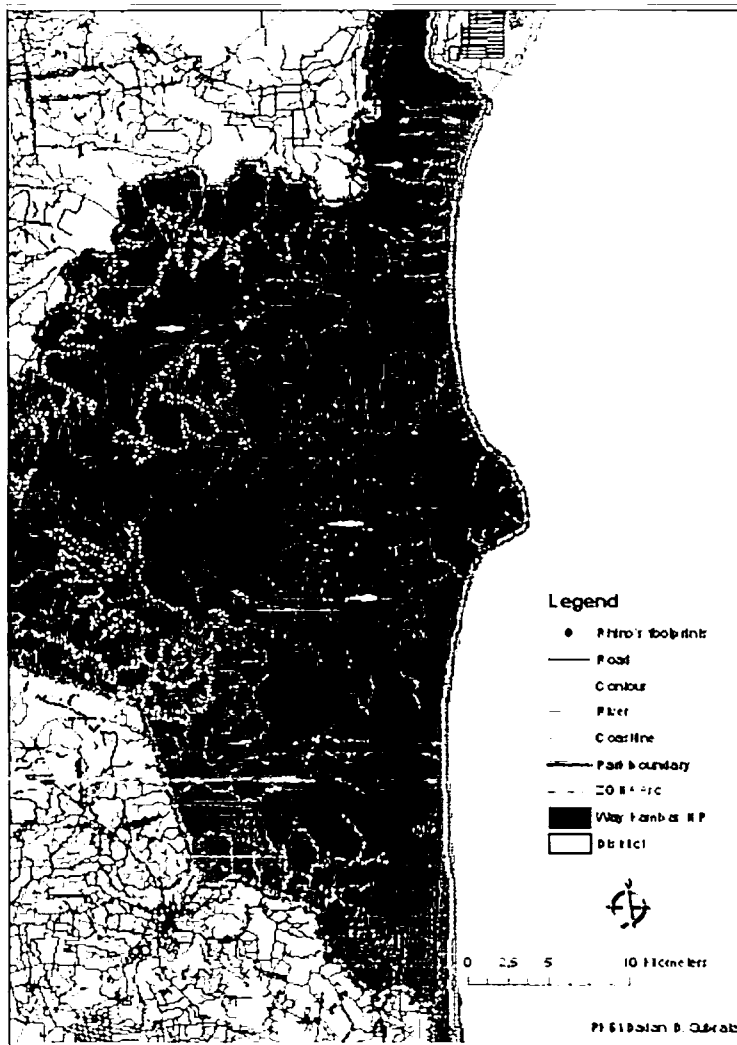


Figure 6. Elephant, Tiger, and Tapir's Footprints discovered in BBS during 2005

## Way Kambas National Park.

In Way Kambas, most of the rhino sign were encountered within the Core Zone and a few in the Conservation Zone and Wilderness Zone of the Way Kambas National Park. See *Figure 7*.

Field observation during 1997 - 2004. The number of rhino in Way Kambas is estimated at 15 - 25. In 2005, a minimum 20 individuals were counted based on a simultaneous survey of the whole Park.



*Figure 7. Footprints of rhino encountered in Way Kambas during 2005.*

## Ujung Kulon National Park.

The National Park is famous for its population of Javan rhino, the only remaining population in Indonesia, and the only viable population in the world. During the patrols a large number of rhino tracks, dung, food plants, and other sign were found in 2005.

Based on the distribution data plotted from the rhino database the Javan rhino population is concentrated in three major areas; Cikeusik, Cibandawoh, and Cibunar. (*Ci = river*)

Since there has been no rhino poaching for several years and there is no other outside interferences that potentially could have disturbed the rhino and its habitat, the population should slowly expand, and not be stable as is indicated in the series of population estimates carried out over the last 25 years. The results of the population census indicate that the rhino has reached carrying capacity, but at a much lower level than 30 years ago. This is reason for concern, since a population of only 40-50 animals is in serious danger of becoming extinct even if there is no poaching.

Possible causes for this lack of growth in the Javan Rhino population include reduction of feeding opportunities through the increase of closed canopy forest, the invasive spreading of unpalatable palm species in the under story, and food competition with Banteng.

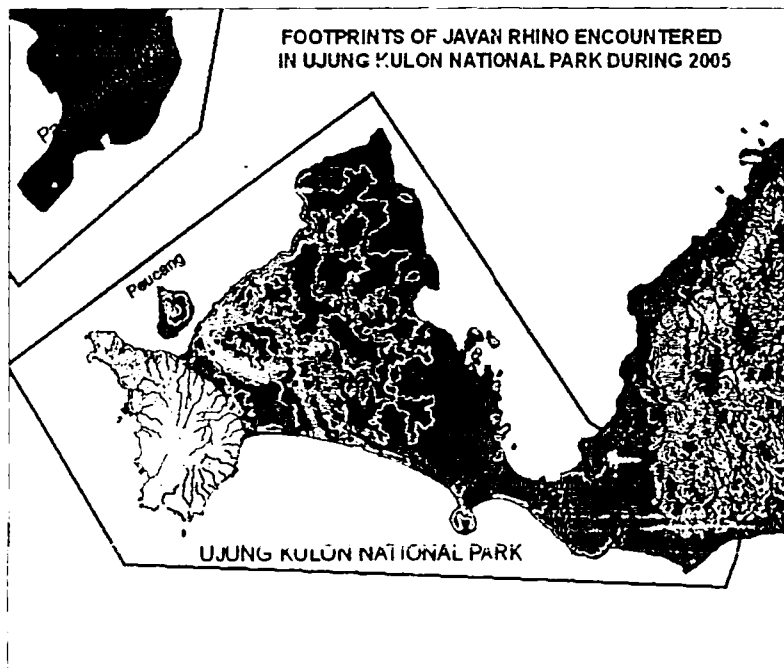


Figure 8. Footprints of Javan rhino encountered in UK during 2005.

## ILLEGAL ACTIVITIES ENCOUNTERED

### Outputs :

More accurate and reliable information on illegal activities encountered within the National Park such as illegal poaching, forest encroachment, field crops, illegal fishing, and others.

### Progress :

During the surveys and patrols many offences were detected and many persons or suspects were interdicted. The number of offences detected are tabulated below.



Table 3. Illegal activities encountered in the park during 2005.

Working Area	Encroachment	Timber Theft	Rhino/Trap	Non Rhino (Mammals)	Other
TNBBS	30	39	0	9	4
TNWK	0	30	0	17	11
TNUK	0	0	0	0	2
Total All Areas	30	69	0	26	17

### Bukit Barisan Selatan National Park.

In BBS, during the surveys and patrols a total of 142 cases of illegal activity were detected. (See the break down of cases above.)

27,5% of the cases concerned timber theft, and 21% of the cases were encroachment or forest conversions into land for agriculture. The forest is mainly converted into coffee plantation and rice field. Although poaching is the most immediate threat to the rhino, encroachment remains the biggest long-term threat to the park as rhino habitat. The rhino become more endangered by



fragmentation of its habitat through indiscriminate forest clearance and forest conversion into agricultural land.

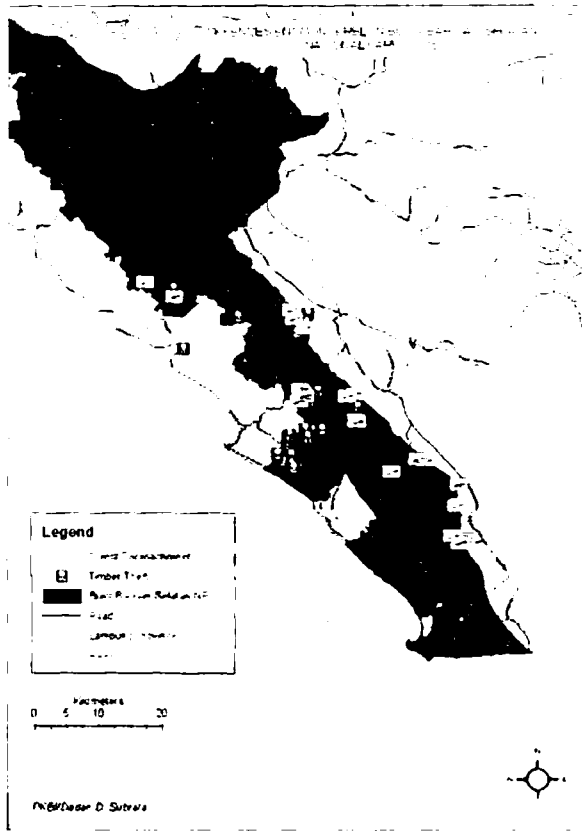


Figure 9. Offences detected in BBS 2005.

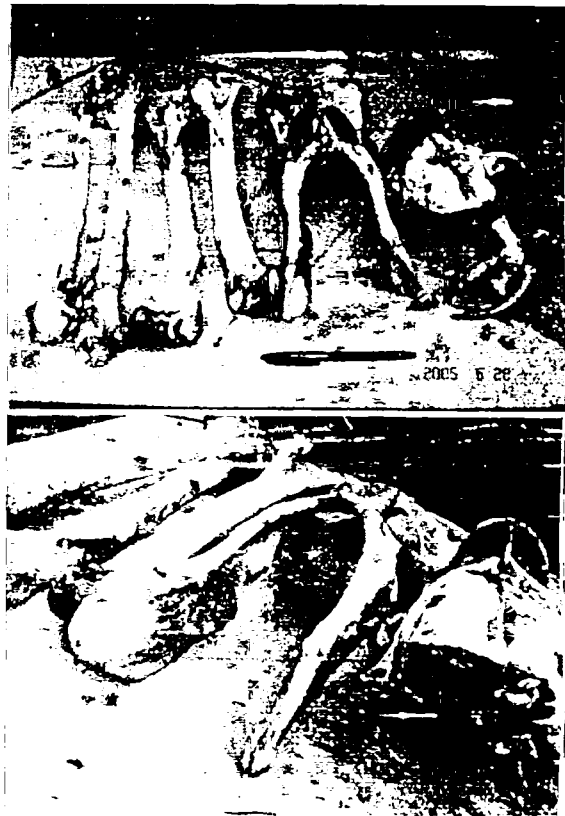
An intelligence operation and law enforcement operation succeeded in uncovering a case of tiger poaching. In June 2005, Forest Rangers of the Provincial Balai PHKA, local police and RPUs have arrested SATTU BIN AMAN and ZUBAIRI BIN DAMROH for tiger poaching. The team confiscated a skull, cervix bone and leg bones of a tiger as evidence (see the picture on the right). Unfortunately in court, the suspects were released. The prosecuting attorney has since appealed to the supreme court to review the case. This will take a long time.



Sattu bin Aman and Zubairi bin Damroh, suspects of tiger poaching in BBS.

In May 2005, Forest Rangers of BBS and local police succeeded in arresting nine suspects of illegal logging along with the evidence; three trucks loaded with 472 pieces ( $\pm 11,5 M^3$ ) of processed wood. The loggers falsified the documents. Two of them, HERMAN BIN HAMID and SUROTO BIN SUJANGI, were convicted to eight months imprisonment, but for the others the cases are still being prosecuted.

During the year, no cases of rhino poaching were encountered. However, in several locations pit-trap for large mammals, fitted with sharp wood lances, were discovered. Even if the traps were set for other species they could kill or wound a rhino accidentally. Fortunately no evidence of killed or wounded rhinos were found. The traps were located around Bukit Peranduan Lumut, upper Air Nasal, A. Pondok Barja, upper Way Tenumbang, and Pematang Melintang.



### Way Kambas National Park.

In Way Kambas, during the surveys and patrols 58 illegal activities were detected, almost 52% of these cases were timber theft and 29% of the cases were for poaching targeting deer or wild pig. The teams detected 15 traps targeting deer, wild pig, and only a few for tigers. Sometimes the teams could arrest the poachers, but in most cases only evidence could be collected.

As can be seen on the map most timber theft cases encountered were close to the park boundary.

The RPUs in Way Kambas have been very successful in preventing any poaching of rhinos, and so far no poaching specifically targeting rhino has been recorded, though poaching for meat and sport is still occurring in Way Kambas. Poaching targeting other large mammals is a serious danger for the rhinos as they could be killed or wounded accidentally.

Although the RPUs have been very successful in preventing any poaching of rhinos, they are not equipped to stop encroachment into the Park. Over the last two years massive encroachment has occurred along the southern boundary of the park, by villagers falsely claiming traditional land rights. So far the authorities have not responded to this infringement and if unchallenged it's likely that people will settle across the park borders in other places as well. So far the areas encroached, about 10% of the Park area, are not suitable for rhino, but the infringements are moving closer and closer to the rhino habitat. Furthermore the new settlements are points of departure for poachers and loggers that penetrate now far into the interior of the Park.

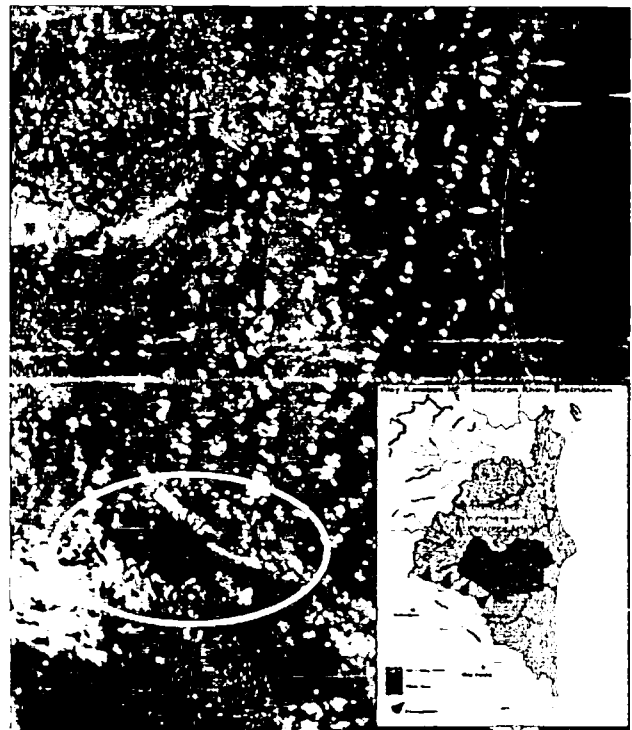
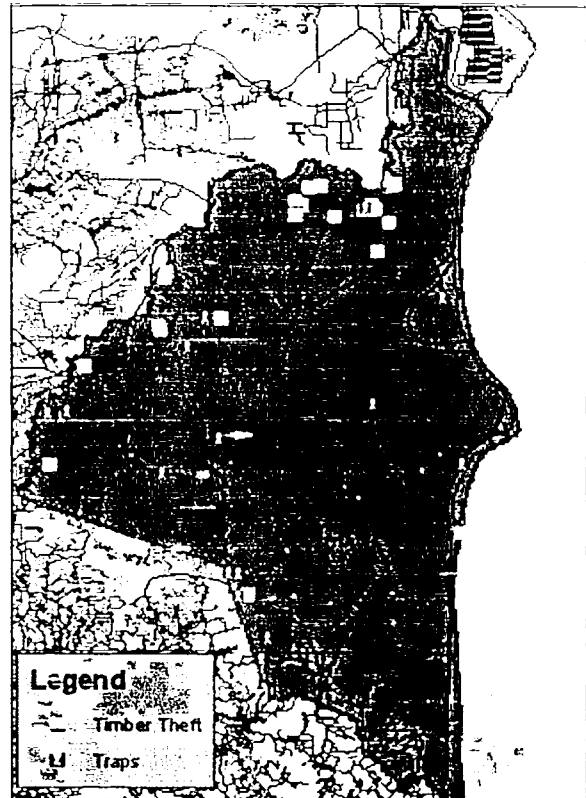


Figure 10. Illegal activities encountered in WK during 2005 (above) and Google Map 2006 showing current vegetation and encroachment in Way Kambas NP (bottom).

## **Ujung Kulon National Park.**

There has been no rhino poaching during 2005, and has been the case for several years now and there is limited other outside interferences in the Park. Illegal activities discovered are minor and include illegal fishing by local people.

## Conclusions

Currently, there are six RPUs and two TPUs operating in Bukit Barisan Selatan, five RPUs in Way Kambas, and three RPUs in Ujung Kulon National Park. These units play an important role in the monitoring of the populations of Sumatran and Javan rhino, tiger, elephant, tapir and other endangered mammals in each park. The units not only prevent poaching, but also counteract all forms of wildlife crime and habitat destruction, like illegal logging and encroachment.

The RPUs have been fully accepted as part of the Park management structure though administratively and financially they are not under the direct supervision of the Park. Technically they are responsible to the Head of the National Park through the Field Coordinator.

Cooperation with the National Parks and with the local authorities has been generally very good, and the RPU activities are accepted as a very valuable contribution toward the protection and management of the Parks. Joint operations with the Park Rangers have been conducted from time to time when the situation demands a larger number of people to participate in operations.

Bukit Barisan Selatan National Park in Sumatra, Indonesia, is one of the highest priority areas for the Sumatran Rhino, the Sumatran Tiger, the Sumatran Elephant and Tapir. These key wildlife populations are surviving in the wild thanks to the work of the RPUs for almost a full decade now.

The Sumatran rhino population in BBS NP is viable at present, and is probably the largest population surviving. Although poaching pressure on Sumatran rhino within the areas covered by the RPUs has reduced to the point of elimination since no trap or poachers were detected, forest encroachment and timber theft (48% of all illegal activities encountered), remains the biggest threat to the Park as rhino habitat.

The rhino will become more endangered by loss of habitat through indiscriminate forest clearance and forest conversion into agricultural land. Moreover, the park is not more than a few kilometers wide in most places hence, mainly in southern half of BBS, most rhinos are found dangerously close to local villages or on the edge of plantations. Therefore, the southern half of BBS is most intensively patrolled by the RPU.

Way Kambas supports one of the larger populations of the Sumatran Rhino, with probably 15 - 25 individuals living mainly in the forested eastern side of the National Park where most of their signs were encountered. The RPUs in Way Kambas have been very successful in preventing any poaching of rhinos, and so far no poaching specifically targeting rhino has been recorded, though poaching for meat and sport is still occur in Way Kambas.

Access to large areas of the Park is comparatively easy, because of the open nature of large parts of the forest and because the existence of old logging roads, built in 60s. Therefore, over recent years massive encroachment has occurred along the Southern boundary of the park and illegal loggers penetrate now far into the interior of the Park.

The special Intelligence and Law Enforcement Unit that initiated in 2002 in Bukit Barisan Selatan and Way Kambas National Parks has been successful and many poachers, traders and other people involved, were taken to court. RPUs have also been able to identify the network and "modus operandi" of poaching and wildlife trade. Since the start of the IRCP program, poaching has decreased sharply, and no rhino poaching was detected in 2005, but the threats of poaching is still very real and the need to monitor and protect rhinos in all rhino areas is as urgent as it was a decade ago.

## **Recommendations**

The Sumatran rhinoceros remains a highly endangered species and will remain so in the immediate future. For an anti-poaching program to be effective it must be ongoing. Any pause and relaxation in the program would lead to an undoing of the progress achieved as the poachers would follow the situation closely and move back to the areas currently protected. In a few months the progress made in many years of work could be undone as it only takes a few groups of skilled poachers to exterminate most rhinos in an area.

Although poaching is the most immediate threat to the rhino, encroachment remains the biggest long-term threat to the park as rhino habitat. Therefore, encroachment must be halted and reversed, so that the whole conservation area is secure and can be used by rhinos again. New roads, mining activities, over exploitation of the forest, etc. in the National park must be stopped. In BBS, the encroachment inside the Park that concerns a large number of people (estimated to be 30,000 families) should be reversed, and all illegal settlements removed.

The Activities of the RPUs have a significant impact on the conservation of natural landscape, because the RPUs not only prevent rhino poaching, but are also active in arresting and preventing habitat degradation through illegal logging, theft of forest products including wildlife, and illegal settlements. Therefore, RPUs should remain in place in Bukit Barisan Selatan and Way Kambas National Parks on Sumatra and in Ujung Kulon National Park on Java.

The number of units should be gradually increased and deployed in an expanding area in order to enlarge secure habitats in the Parks, and allow rhinos and other wildlife to return to areas where they were exterminated in the past. The IPCP RPU program will remain critical for the continued survival of the Javan and Sumatran Rhinos throughout the implementation period of the Indonesian Rhino Conservation Strategy and Action Plan.

The Sumatran Rhino in Way Kambas are most vulnerable and continued presence of anti-poaching units is vital to discourage rhino poachers from other areas to try their luck in Way Kambas. The existing massive encroachment should be removed, then the areas need to be reforested and turned into secure rhino habitat.

# **QUARTERLY DATA**

## GENERAL PERFORMANCE PARAMETERS

### FIRST QUARTER

(1 January - 31 March 2005)

Working Area	Number of Activities	Distances walked (Km)	Number of Days	Field days per person
Bukit Barisan Selatan NP	34	801,90	362	20,20
Way Kambas NP	50	2.075,14	260	16,45
Ujung Kulon NP	15	878,04	175	23,68
<b>Total</b>	<b>99</b>	<b>3.755,08</b>	<b>797</b>	<i>Average 20,11</i>

### SECOND QUARTER

(1 April - 30 June 2005)

Working Area	Number of Activities	Distances walked (Km)	Number of Days	Field days per person
Bukit Barisan Selatan NP	33	1.047,50	345	19,80
Way Kambas NP	35	1.285,70	183	11,87
Ujung Kulon NP	10	287,30	137	15,47
<b>Total</b>	<b>78</b>	<b>2.620,5</b>	<b>665</b>	<i>Average 15,71</i>

### THIRD QUARTER

(1 July - 30 September 2005)

Working Area	Number of Activities	Distances walked (Km)	Number of Days	Field days per person
Bukit Barisan Selatan NP	33	1.753,50	366	21,25
Way Kambas NP	65	1.678,44	301	14,48
Ujung Kulon NP	17	783,46	171	19,24
<b>Total</b>	<b>115</b>	<b>4.215,4</b>	<b>838</b>	<i>Average 18,32</i>

### FOURTH QUARTER

(1 October - 31 December 2005)

Working Area	Number of Activities	Distance walked (Km)	Number of Days	Field days per person
Bukit Barisan Selatan NP	24	962,74	308	18,10
Way Kambas NP	27	751,80	161	16,51
Ujung Kulon NP	15	623,49	170	19,00
<b>Total</b>	<b>66</b>	<b>2.3380,03</b>	<b>639</b>	<i>Average 17,87</i>

## ILLEGAL ACTIVITIES ENCOUNTERED

FIRST QUARTER

(1 January - 31 March 2005)

Working Area	Gaharu* Theft	Encroachment & theft	Illegal Hunting	
			Rhino/Trap	Non Rhino
Bukit Barisan Selatan NP	0	26	0	0
Way Kambas NP	0	10	0	5
Ujung Kulon NP	0	0	0	0

SECOND QUARTER

(1 April - 30 June 2005)

Working Area	Gaharu* Theft	Encroachment & theft	Illegal Hunting	
			Rhino/Trap	Non Rhino
Bukit Barisan Selatan NP	0	17	0	2
Way Kambas NP	0	8	0	1
Ujung Kulon NP	0	0	0	0

THIRD QUARTER

(1 July - 30 September 2005)

Working Area	Gaharu* Theft	Encroachment & theft	Illegal Hunting	
			Rhino/Trap	Non Rhino
Bukit Barisan Selatan NP	0	12	0	0
Way Kambas NP	0	6	0	5
Ujung Kulon NP	0	0	0	0

FOURTH QUARTER

(1 October - 31 December 2005)

Working Area	Gaharu* Theft	Encroachment & theft	Illegal Hunting	
			Rhino/Trap	Non Rhino
Bukit Barisan Selatan NP	0	14	0	7
Way Kambas NP	0	6	0	6
Ujung Kulon NP	0	0	0	0

\* Gaharu (a component for incense) theft is listed separately, because it is a major threat in any forest in Indonesia



## BASIC RHINO POPULATION PARAMETERS

(Number of locations of rhino signs encountered).

### FIRST QUARTER

(1 January - 31 March 2005)

Working Area	Footprint	Wallow	Feces	Other signs*	Direct Sighting
Bukit Barisan Selatan NP	24	13	2	1	0
Way Kambas NP	23	14	53	76	0
Ujung Kulon NP	44	21	7	2	1
<b>Total</b>	<b>91</b>	<b>48</b>	<b>62</b>	<b>79</b>	<b>1</b>

### SECOND QUARTER

(1 April - 30 June 2005)

Working Area	Footprint	Wallow	Feces	Other signs*	Direct Sighting
Bukit Barisan Selatan NP	19	5	6	5	3
Way Kambas NP	42	11	34	65	1
Ujung Kulon NP	9	6	1	0	0
<b>Total</b>	<b>70</b>	<b>22</b>	<b>41</b>	<b>70</b>	<b>4</b>

### THIRD QUARTER

(1 July - 30 September 2005)

Working Area	Footprint	Wallow	Feces	Other signs*	Direct Sighting
Bukit Barisan Selatan NP	21	7	3	4	0
Way Kambas NP	71	35	50	85	0
Ujung Kulon NP	35	5	4	0	0
<b>Total</b>	<b>127</b>	<b>47</b>	<b>57</b>	<b>89</b>	<b>0</b>

### FOURTH QUARTER

(1 October - 31 December 2005)

Working Area	Footprint	Wallow	Faeces	Other signs*	Direct Sighting
Bukit Barisan Selatan NP	4	9	2	3	0
Way Kambas NP	24	8	33	50	0
Ujung Kulon NP	52	6	7	5	0
<b>Total</b>	<b>80</b>	<b>23</b>	<b>42</b>	<b>58</b>	<b>0</b>

\* Include urine, scratches, rubs.

## PATROL DATA - 2005

Location	Activity	Start Date	End Date	Days	Length (Km)	Remarks
<b>BUKIT BARISAN SELATAN NP Q1 (January - March)</b>						
B. 50, Talang Imam, Talang Enam, Talang Sembilan,	Patrol	6 Jan	14 Jan	9	19	Encountered illegal crops and felled trees ex timber theft.
Pemerihan, Sumberrejo, Way Canguk.	Patrol	22 Jan	30 Jan	9	21	Encountered illegal crops and felled trees ex timber theft.
Pemerihan, Cawang Haro, Way Canguk, Sumberrejo.	Patrol	6 Feb	16 Feb	11	23	Encountered 4-unit of chain saw and 7,14 M3 of wood kruing in Siwalawa. 9 suspects escaped.
Pemerihan, Way Canguk, Cawang Haro, Sumberrejo.	Patrol	17 Feb	28 Feb	12	21	Encountered processed wood 4,24 M3 in Way Canguk. Footprints of a tiger in Pemerihan.
Pemerihan, Sumberrejo, Way Canguk.	Patrol	6 Mar	14 Mar	9	25	Felled trees ex timber theft.
Talang Asahan, Umbul Basir, Talang Sembilan, Sidomulyo.	Patrol	21 Mar	27 Mar	7	27	Encountered illegal crops almost 25 hectares in Umbul Basir and Talang Sembilan also 14 felled trees.
Pematang Langgar, Hulu Way Rilau, Peg. Bawang Ucun, Hulu Way Mendati.	Patrol/ Survey	9 Jan	17 Jan	9	36	New rhino signs. No illegal poaching.
Pemerihan, Cawang haro, Way Canguk.	Patrol/ Survey	23 Jan	30 Jan	8	31	No new rhino sign.
Talang Pendowo, Hulu Way Biha, Hulu Way Marang Lunik.	Patrol/ Survey	9 Mar	17 Mar	9	34	Signs of rhino: footprints, urine and scratches.
Way Mendati, Krengseng, Hulu Way Ngambur.	Patrol/ Survey	21 Mar	29 Mar	9	41	No rhino sign, only footprints of a tiger.
KM 32, KM 30, Anak Way Bambang, KM 26, KM 21.	Patrol/ Survey	7 Jan	15 Jan	9	31	Signs of rhino. No forest disturbance.
Pal 50, Tulung Bamban, Hulu Way Bambang, Anak Way	Patrol/ Survey	22 Jan	30 Jan	9	26	Rhino's signs. No forest disturbance.
Pal 50, Tulung Bamban, Hulu Way Bambang, Anak Way Bambang, KM. 30.	Patrol/ Survey	7 Feb	15 Feb	9	31	Rhino's signs. No forest disturbance.
KM 18, Anak Way Pemerihan, Pemerihan besar.	Patrol/ Survey	20 Feb	28 Feb	9	27	No rhino sign. Encountered timber theft.
Pal 50, Tulung Bamban, Hulu Way Bambang, Talang Enam, Talang Sembilan, Sidomulyo.	Patrol/ Survey	22 Mar	30 Mar	9	27	No new rhino sign. Encountered timber theft and forest encroachment.
KM 32, KM 21, KM 50, Hulu Way Pemerihan, Hulu Way Bambang	Patrol and Monitoring	1 Jan	31 Jan	31	0	-
KM 32.	Patrol and Monitoring	1 Feb	28 Feb	28	0	No forest disturbance (Area is safe).
KM 32, KM 50.	Survey, Patrol, Monitoring	1 Mar	31 Mar	31	0	Signs of rhino (Rosa): footprints, dung, wallows, scratches, and urine. Local people informed that had seen two rhino, male and female. Direct sighting Tarsius. No illegal activity.
Penengahan, Way Campang Kanan, Way Kalawi, Way Paya, Way Nenok, Way Menanga Kanan.	Patrol/ Survey	7 Jan	16 Jan	10	36	Signs of rhino, tapir, and tiger.
KM 26, Way Bambang, KM 30.	Patrol/ Survey	23 Jan	28 Jan	6	16	Direct sighting a male adult elephant. Footprints of rhino.
Karang Berak, Peg. Serumpun Batu, Way Menanga Kiri	Patrol/ Survey	8 Feb	17 Feb	10	16	Signs of tapir, tiger and elephant.
Km 21, Way Bambang, Km 29	Patrol/ Survey	22 Feb	28 Feb	7	12	Wallows of rhino.

Location	Activity	Start Date	End Date	Days	Length (Km)	Remarks
Guring, Penyantun, Way Kreng-seng, Way Kuyung, Way Batur.	Patrol/Survey	10 Mar	16 Mar	7	36	Signs of tiger and tapir.
Way Nipah, Penyantun, Way Kejadian.	Patrol/Survey	24 Mar	30 Mar	7	34	No rhino sign, only tiger and tapir.
Pemerihan.	Other	3 Jan	6 Jan	4	0	-
Talang Sebelas, Blok Tujuh, Umbul Basir, Umbul Del	Patrol/Survey	7 Jan	16 Jan	10	47	No rhino sign. Encountered timber theft.
Pemerihan, Cawang Haro, Way Canguk, Sumberrejo.	Patrol	6 Feb	16 Feb	11	25	Secure 4 units of chainsaw in Siwalawa, Sumberrejo. Suspects got escaped.
Pemerihan, Way Canguk, Siwalana, Sumberrejo.	Patrol	17 Feb	28 Feb	12	27	Encountered processed wood before transported.
Sidomulyo, Talang Sembilan, Hulu Way Bambang, Talang Asahan.	Patrol and Monitoring	7 Jan	15 Jan	9	25	Footprints of elephant, tapir, primate. Encountered forest encroachment in Talang Sembilan (small of them still nursery by the owner). Timber theft in small scale in form of processed wood encountered also.
Karang Berak, Hulu Way Kejadian.	Patrol/Survey	23 Jan	31 Jan	9	15	Signs of tiger, tapir, elephant, deer, etc.
Kubu Perahu, Hulu Way Krui, Mahnai Balak, Sukanegara.	Patrol/Survey	22 Jan	30 Jan	9	25	No rhino sign.
Way Asahan, Hulu Way Lancuran.	Patrol/Survey	7 Feb	14 Feb	8	16	No rhino sign.
Tampang Tua, Way Blambang-an, Pg. Ramping, Way Blambang Huma.	Patrol/Survey	9 Mar	16 Mar	8	27	Signs of rhino, tiger and groups of elephants. No illegal poaching encountered.
Way Nipah, Purwosari, Way Kejadian.	Patrol/Survey	23 Mar	30 Mar	8	26	No rhino sign, only tiger and tapir.

#### BUKIT BARISAN SELATAN NP Q2 (April - June)

TNWK = D2, Rawo Badak, Macan Loncat, C. Aceh, C. Opu, C. Penanggungan, Bungur.	"Refreshment Program"	4 May	10 May	7	0,00	Encountered signs of forest intruders. Signs of tiger. "Refreshment Programme" RPU TNBBS in Way Kambas.
TNWK = D1, Air Hitam, Murai, Beruang Mati, L. Pecah, Rawa Lintah.	"Refreshment Program"	4 May	10 May	7	0,00	Signs of rhino. No illegal activity. "Refreshment Programme" RPU TNBBS in Way Kambas.
TNWK = Sartam, Rw. Andi, C. Opu, Mundu, Sumpah, Bincung, Ogay.	"Refreshment Program"	4 May	11 May	8	0,00	Encountered spot of forest fire. "Refreshment Programme" RPU TNBBS in Way Kambas.
TNWK = Pos Way Kanan, Kuala Kambas.	"Refreshment Program"	13 May	15 May	3	0,00	"Refreshment Programme" RPU TNBBS in Way Kambas.
TNWK = Camp D1, Camp 5000, Karaoke, R1 Gambas.	"Refreshment Program"	19 May	25 May	7	0,00	"Refreshment Programme" RPU TNBBS in Way Kambas.
TNWK = Pos Way Kanan, Kuala Kambas.	"Refreshment Program"	29 May	30 May	2	0,00	"Refreshment Programme" RPU TNBBS in Way Kambas.
TNUK = Blok Cigenter, Wil. Transek 8 (utara selatan), Cibunar, Transek 13, Cidaon, P. Peucang.	"Refreshment Program"	11 Apr	29 Apr	19	0,00	Signs of rhino (footprints 3 sets). "Refreshment Programme" in Ujung Kulon NP.
TNUK.	"Refreshment Program"	16 May	31 May	16	0,00	"Refreshment Programme" RPU TNBBS in Ujung Kulon.
Penengahan, Sugiwaras, Way Petar, Way Napal, Sinar Jaya.	Patrol	8 Apr	16 Apr	9	24,00	Encountered illegal crops for almost 56 hectares in Sugiwaras.
Pemerihan, Cawang Haro, Way	Patrol	20	28	9	23,00	Encountered 21 felled trees traces of

Location	Activity	Start Date	End Date	Days	Length (Km)	Remarks
Canguk, Sumberrejo.		Apr	Apr			timber theft in Pemerihan, Way Canguk.
Pemerihan, Sumberrejo, Way Canguk.	Patrol	1 May	6 May	6	20,00	Arrest 2 suspects of timber theft.
Sukaraja, B. 50, KM. 26, Jl. Lintas Bengkunt.	Patrol	8 May	16 May	9	18,00	Arrest 9 suspects of timber theft and 3 trucks contains wood in Kotaagung.
Sukaraja, Tulung Asahan, Umbul Lapan, Wonosobo, Belu, Kotaagung.	Patrol	8 Jun	16 Jun	9	25,00	Arrest 2 suspects of tiger poaching, Zubairi and Sattu, in Pekon Belu Kec. Kotaagung, Tanggamus.
Karang Berak, Penengahan, Sugiwaras.	Patrol	20 Jun	28 Jun	9	25,00	Encountered illegal crops for almost 35 hectares in Section B and Way Petar.
Panama, Way Ngambur, Hulu Way Ngambur, Hulu Way Telma.	Patrol/ Survey	10 Apr	18 Apr	9	35,50	No rhino sign. Signs of tiger and tapir.
KM 30, Hulu Way Bambang, KM 50.	Patrol/ Survey	19 May	26 May	8	21,00	Signs of rhino. No illegal activity. Direct sighting "Rosa".
Way Pemerihan, Cawang Haro, Way Canguk, Way Rili, Sumberrejo	Patrol/ Survey	5 Apr	13 Apr	9	29,00	No rhino sign. No illegal poaching. Timber theft around river of Way Pemerihan.
Sukaraja Atas, Pal 50, KM. 26.	Patrol	5 May	14 May	10	102,00	taken red handed a timber theft using truck vehicles, Fuso Mitsubishi 190 PS and 2 trucks Toyota Dyna.
Sukaraja Atas, Bumi Perkemahan, Peninggeman, Hulu Way Canguk, Way Pemerihan.	Patrol/ Survey	21 May	29 May	9	36,00	No rhino sign. No illegal poaching. Encountered forest encroachment in Peninggeman and Pemerihan.
Kubu Perahu, Way Menterang, Hulu Way Krui, Hulu Way Tenumbang, Hulu Way Mahnai Balak, Krui.	Patrol/ Survey	20 Jun	29 Jun	10	47,00	Signs of rhino. Encountered mammal's trap setting. Arrest 3 suspects of illegal fishing.
Km 32, KM 50, Hulu Way Bambang, Hulu Way Pemerihan.	Survey, Patrol, Monitoring	1 Apr	30 Apr	30	0,00	No illegal activity around KM 32.
Pal 50, KM 32, Talang Iman, talang Sidomulyo.	Patrol/ Survey	19 May	26 May	8	23,00	Direct sighting a female rhino "Rosa".
KM 50, KM 32, KM 21, Way Bambang, Way Pemerihan.	Survey, Patrol, Monitoring	1 May	31 May	31	150,00	"Rosa" still around in KM 50. No illegal activity encountered.
KM 50, KM 26, Hulu Way Bambang, Hulu Way Pemerihan, Umbul Delapan, Kali Kumbang.	Survey, Patrol, Monitoring	1 Jun	30 Jun	30	230,00	No illegal activity. Discovered other large mammal, elephants.
Km 21, Way Bambang, Km 29	Patrol/ Survey	6 Apr	9 Apr	4	12,00	No rhino sign.
Dusun Sugiwaras, Pekon Tirom Kec. Pematang Sawa, Tanggamus.	Patrol	11 Apr	14 Apr	4	12,00	-
KM 24, Way Bambang, KM 50.	Patrol/ Survey	21 Apr	30 Apr	10	22,00	Direct sighting a male rhino and a male elephant, also other signs of rhino.
Way Pemerihan, Way Canguk, Muara Way Pemerihan.	Patrol/ Survey	21 Jun	29 Jun	9	16,00	Rhino's footprints. Encountered timber theft and 4 set of animal traps made of nylon string.
Pal 50, KM 30, Way Bambang, KM 24.	Patrol/ Survey	20 Jun	29 Jun	10	26,00	Signs of rhino (infant and adult rhino). No signs of illegal poaching encountered.
Talang Asahan, Kali Kumbang, Peg. Basilila, Hulu Way Bambang, KM 50.	Survey, Patrol, Monitoring	12 Apr	19 Apr	8	57,00	The female rhino, "Rosa", that trespassed field crops in Kali Kumbang, has already move back to the forest. No illegal activity encountered.
Km 21, Way Bambang, Km 29	Patrol/ Survey	21 Jun	28 Jun	8	21,00	Signs of rhino.
Talang Sebelas, Hulu Way Saru	Patrol/	21	30	10	48,00	Signs of rhino.

Location	Activity	Start Date	End Date	Days	Length (Km)	Remarks
Balak, Hulu Way Ngaras, Hulu Way Pintau, Umbul Basir, Umbul Kali Pasir.	Survey	Apr	Apr			
Limus, Tampang, Way Blambangan.	Patrol/Survey	22 Jun	29 Jun	8	25,00	No rhino sign.

### BUKIT BARISAN SELATAN NP Q3 (July - September)

B. 50, Talang Imam, Talang Enam, Talang Sembilan, Talang Tumpak, Kalipasir.	Patrol	14 Jul	20 Jul	7	40,00	Signs of rhino. Encountered illegal field almost 22 hectares.
B. 50, Jl. Tembus Bengkumat, Tl. Joni, Sukaraja Atas.	Patrol and Monitoring	22 Jul	4 Aug	14	26,00	Couldn't find Rosa around monitoring areas.
B. 50.	Patrol and Monitoring	6 Aug	14 Aug	9	21,00	Couldn't find Rosa but other mammals.
B. 50, Talang Joni, Kuyung Arang, Jl. Tembus Bengkumat.	Patrol and Monitoring	22 Aug	29 Aug	8	20,00	Prints of "Rosa" in Patok 50.
B. 50, Talang Joni, Kanandg Satwa, KM 34, KM 21.	Patrol	8 Sep	16 Sep	9	21,00	-
B. 50, Jl. Tembus Bengkumat, Tl. Joni, Kanandg Satwa.	Patrol	22 Sep	30 Sep	9	28,00	Found Siamang, Rangkong bird, Kuau. Also 2 flower of Rafflesia swell in Camp 50.
Karang Berak, Umbul Kapuk, Way Balak, Leter S, Serumpun Batu, Way Menanga Kiri, Way Bahima, Way Kejadian, Sinar Laut	Patrol/Survey	6 Jul	15 Jul	10	37,00	No new rhino sign. Forest encroachment decreased in Karang Berak.
Ngaras, Bumiratu, Way Ngaras, Anak Way Ngaras, Hulu Way Ngaras, Pegunungan Basalila, Umb. Kuyung, Tulung Asahan.	Patrol/Survey	7 Aug	16 Aug	10	49,00	Signs of rhino. Probably there are two rhinos lived around the edge of field crops in Way Ngaras.
KM 30, Hulu Way Bambang Tengah, Hulu Way Bambang, Tulung Bamban, Pal 50.	Survey, Patrol, Monitoring	25 Aug	2 Sep	9	79,00	No new rhino sign along the tracks of KM 30 Hulu Way Bambang. No illegal poaching. Found Rosa and drive away around camp Pal 50.
Sukaraja Atas, Peninggeman, Giri Totok, Margomulyo, Hulu Way Canguk, Way Babuta, Way Penimpahan, Way Pemerihan.	Patrol/Survey	6 Sep	14 Sep	9	56,00	Signs of rhino (prints). Encountered forest encroachment followed by illegal logging. No illegal poaching.
Pal 50, Tulung Bamban, Hulu Way Bambang, Way Bambang Tengah, Talang Pagelaran, Simpang Kepimping, KM 13.	Patrol/Survey	20 Sep	29 Sep	10	37,00	Old rhino signs. Encountered timber and resin theft.
KM 50, KM 30, talang Asahan, Kali Kumbang, Umbul Sero, Basilila, Umbul Basir, T. Bahren.	Driving Rosa	1 Jul	31 Jul	31	384,00	Rosa found in Kali Kumbang and drive away into KM 50. No illegal activity.
KM 50, Talang Asahan, Tugu ratu, Tl. Kalianda, Kali Kumbang, Umbul Basir.	Driving Rosa	1 Aug	31 Aug	31	116,00	Rosa found in Talang Kalianda and drive away back to KM 50.
Peninggeman, Way Canguk, Muara Way Pemerihan.	Patrol/Survey	6 Sep	13 Sep	8	24,00	No rhino sign. Footprints of tiger and tapir. Encountered forest encroachment.
Penengahan, Way Campang Kanan, Way Nenok, Way Paya.	Patrol/Survey	8 Jul	17 Jul	10	18,00	Signs of rhino, tapir and tiger.
Ringin Sari (Suoh), Hulu Way Mendati, Way Ngambur Bunuk, Panji Wayang.	Patrol/Survey	27 Jul	5 Aug	10	22,00	Signs of rhino, tiger and tapir.
Talang Asahan, Talang Samino, Talang Basir, Talang Babi, Talang Puncak, Talang Imam, Patok 50.	Driving Rosa	16 Aug	22 Aug	7	24,00	Direct sighting 7 elephants (adult and infant). Direct sighting 5 adult elephants.
Sukamarga, Way Tenumbang, Hulu Way Mahnai Balak, Banjar	Patrol/Survey	21 Sep	30 Sep	10	36,00	Signs of rhino, tiger and tapir.

Location	Activity	Start Date	End Date	Days	Length (Km)	Remarks
Agung.						
Tirom (Pematang Sawah). Way Kawat, Pemekahan, Belimbing.	Patrol/ Survey	7 Jul	17 Jul	11	37,00	Signs of rhino such as footprints, wallow and rub down.
Tugu Ratu Suoh, Bt. Bawang Ujung, Hulu Way Tembulih, Hulu Way Rilau, Krengseng, Hulu Way Mendati.	Patrol/ Survey	27 Jul	5 Aug	10	52,00	Signs of rhino.
Peninggeman, hulu Way Pemerihan, Way Canguk, Peg. Cawang Haro.	Patrol/ Survey	26 Aug	1 Sep	7	22,00	Signs of rhino and other large mammals.
Bumbon, Way Anderlung, Way Lubuk Pring, Way Tenumbang, Way Mahnai Lurik.	Patrol/ Survey	19 Sep	2 Oct	14	59,00	No rhino sign.
Way Nipah, Way Haru.	Patrol/ Survey	9 Jul	16 Jul	8	57,00	No rhino sign.
Batu Tampah, Langsa.	Patrol/ Survey	27 Jul	4 Aug	9	60,00	Found Rosa in Talang Rahmad (Hulu Way Tembulih).
Bumbon, Way Tenumbang, Damar Pak, Suka Banjar.	Patrol/ Survey	10 Aug	19 Aug	10	64,00	No rhino sign. A lot of signs of elephant, tiger and tapir.
Limus, Gn. Kukusan, Hulu Way Blambangan.	Patrol/ Survey	24 Aug	29 Aug	6	15,00	No rhino sign.
Umbul Kali Kumbang, Basalila Arah Patok 50.	Driving Rosa	6 Jul	13 Jul	8	29,00	Rosa drive away into Patok 50 area.
Marang, Tl. Pendowo, Hulu Way Biha, Hulu Way Marang Lunik, Hulu Ngambur, Hantatai, Sukamarga (Suoh Lamban).	Patrol/ Survey	10 Aug	19 Aug	10	47,50	No rhino sign. No illegal poaching but still present human activity around the park (resin theft, bird catching and gaharu collection).
Tampang, Way Blambangan, Way Sleman, Belimbing, Way Tinggal, Menjuket, Way Sekawat.	Patrol/ Survey	25 Aug	31 Aug	7	50,00	No rhino sign. No illegal poaching and forest product theft.
KM 50, Basilila, Kali Kumbang, Tirta Luhur, Pungkalan.	Patrol and Monitoring	1 Sep	30 Sep	30	136,00	Monitoring on Rosa
KM 50, KM 29, Km 24.	Field introduction to TPU WWF Tesso Nilo	4 Sep	12 Sep	9	6,00	Found fresh prints of rhino along KM 29 KM 24.
Belimbing, Pemekahan, Way Blambangan, Muara Way Blambangan.	Patrol/ Survey	21 Sep	29 Sep	9	62,00	Sign of rhino in Hulu Way Sleman.
Kandang Satwa, Hulu Way Pemerihan, Pemerihan besar.	Patrol/ Survey	22 Sep	28 Sep	7	19,00	Signs of rhino.

#### BUKIT BARISAN SELATAN NP Q4 (October - December)

Siring Balak, Pematang Langgar, Way Rilau, Way Mendati.	Patrol/ Survey	20 Oct	28 Oct	9	23	Encountered timber theft (processes wood) in Pematang Langgar. Signs of rhino in Hulu Way Rilau.
Penyandingan, KM 20, Air Sambat Kanan, Air Nasal Kiri, Air Pondok Barja, Bt. P. Lumut, A Far Lebar, Pagar Agung.	Patrol/ Survey	12 Nov	29 Nov	18	50	Rhino's wallow. Encountered a hole (animal trap), and field crop in KM 20.
Penengahan, Sugiwaras, Hulu Way Menanga Kanan, Menanga	Patrol/ Survey	10 Dec	25 Dec	16	50	No rhino sign. Only prints of tiger, elephant, and tapir.

Location	Activity	Start Date	End Date	Days	Length (Km)	Remarks
Kiri, Siring Gading, Way Haru. Way Pemerihan, Sumberejo, Temu Putih, Ujung Pandang, Siging.	Patrol	10 Oct	19 Oct	10	74	Untill 19 Oct. 2005 total of timber or processed wood secured over 189,5 M3 in various size and type, vehicles: 1 truck FUSO and 2 truck Diesel, 1 motorcycle and 2 chain saw.
Pal 50, KM 28, KM 24, jalan Tembus Sanggi Bengkumat, Temu Putih, Way Bambang, Way Pintau, Way Ngaras, TI. Pendawa.	Patrol/ Survey	22 Oct	2 Nov	12	40	No rhino sign. Encountered rattan theft by local people.
Kedataran, Penyandingan, KM 7, KM 18, Linau, Tanjung Aur, Bt. Kumbanng, anak Air Sambat Kanan, Hulu Air Nasal, Air Pondok Barja, Datar Lebar, Pagar Agung, Gn. Batu.	Patrol/ Survey	14 Nov	29 Nov	16	74	No rhino sign but other wildlife such as tapir and elephant. Encountered illegal poaching in form of hole trap for deer or wild pig.
Way Nipah, Penyantun, Sidodadi, Pedamaran, Sukamaju, Hulu Way Kejadian, Way Kejadian, W. Siring Gading, Peg. cempaka, Way Babuta, Way Canguk, Way Pemerihan, Sumberejo.	Patrol/ Survey	9 Dec	18 Dec	10	65	No rhino sign. Encountered new forest clearance, and remnant of illegal gold mining activity in Hulu Way Kejadian.
Suoh, Pungalan, Kali Kumbang, Peg. Basilica, Talang Babi, KM 50, KM 34.	Rosa's Driving	1 Oct	31 Oct	31	147	Rosa driven away from Suoh to KM 50 and then KM 34.
KM 34.	Penjagaan Kandang Rosa	1 Nov	26 Nov	26	0	-
KM 21, Way Bambang, KM 30.	Patrol/ Survey	10 Oct	17 Oct	8	12	Signs of rhino.
Terangging, Hulu Way Morang, Way Biha.	Patrol /Survey	22 Oct	28 Oct	7	18	No rhino sign. Found only prints of tapir.
Pematang Jiring, Air Nasal, Pematang Melintang, Bt. Napalan, Peg. Bengkulu, Air Semaya, Sinar Marga.	Patrol/ Survey	14 Nov	29 Nov	16	46	Prints and dung of tapir.
Way Betung (Muara Dua), Hulu Way Canguk, Way Canguk, Muara Way Pemerihan, Bambu Kuning.	Patrol/ Survey	9 Dec	16 Dec	8	28	No rhino sign. Footprints of tapir and tiger. An old and not active rhino wallow.
KM 30, Hulu Way Bambang, KM 24	Patrol/ Survey	8 Oct	15 Oct	8	30	Rhino's footprints (new). No illegal poaching.
Pemerihan, Siging Bengkumat, Way Ngaras.	Patrol	20 Oct	28 Oct	9	0	Encountered processed wood. The evidences secured in Military District (Kodim) of West Lampung.
Merpas (Bengkulu Selatan), Trankole, Air Ajim, Air Muslim, Dusun Lama, Air Manula, hulu Air Manula, Pulau Duku, Teluk Agung (Sumsel).	Patrol/ Survey	12 Nov	29 Nov	18	50	No rhino sign. Encountered forest encroachment along the track. No illegal poaching.
Limus, Sinar Ogan, Hulu Way Blambangan, way Kewat, Peg. Ramping, Tanjung Mas, Kubu Slerman.	Patrol/ Survey	6 Dec	22 Dec	17	40	No rhino sign. No illegal poaching.
KM 24, Hulu Way Bambang, KM 29.	Patrol/ Survey	10 Oct	17 Oct	8	20	Signs of rhino. Encountered ex damar (resin) theft.
KM 30, Way Bambang tengah, Way Bambang besar.	Patrol/ Survey	21 Oct	28 Oct	8	25	Signs of rhino.

<i>Location</i>	<i>Activity</i>	<i>Start Date</i>	<i>End Date</i>	<i>Days</i>	<i>Length (Km)</i>	<i>Remarks</i>
Tampang, Kubu Liman, Muara Way Sleman, Blambangan, Menjukul, Sekawat.	Patrol/Survey	10 Dec	17 Dec	8	41	Rhino's wallows (2) and footprints of elephant and other wildlife.
KM 50, KM 34.	Penjagaan Kandang Rosa	8 Oct	15 Oct	8	18	-
Grogol, Way Ngaras Kiri, Way Ngaras Kanan, Mulang Maya.	Patrol/Survey	21 Oct	27 Oct	7	22	No rhino sign. Found only tiger's print.
Pasar Jumat, Hulu Air Manula, Bt. Bulat, Bt. Jabut, Hulu Air Semaya kiri, Peg. Bengkulu.	Patrol/Survey	13 Nov	27 Nov	15	41	No rhino sign. Encountered forest product theft.
Karang Berak, Way Menanga Kiri, Way Bahima, Way Kejadian, Way Sringgading, Way Rumbai, Way Haru, Way Babuta, Way Canguk, Way Pemerihan.	Patrol/Survey	9 Dec	23 Dec	15	50	No rhino sign except an old and not active rhino wallow. Encountered bird theft.



Location	Activity	Start Date	End Date	Days	Length (Km)	Remarks
<b>WAY KAMBAS NP</b>						
<b>Q1 (January - March)</b>						
D2, way Tulung Sula, R1.	Patrol/ Survey	5 Feb	10 Feb	6	32	Signs of rhino, tiger and other wildlife. Area is safe.
Way Kanan, Kuala Kambas	Patrol	12 Feb	13 Feb	2	25	Area is safe.
Posdal, Way Batin, Rawa Dacul, C. Temon, Rawa Badak, Pos Way Kanan.	Patrol/ Survey	15 Feb	20 Feb	6	21	Signs of rhino and tiger.
Bungur, Way Pegadungan, Rasau.	Patrol/ Survey	5 Jan	10 Jan	6	69	Arrest 3 suspects of illegal logging and the evidences.
Way Kanan, Pos Wako, Rasau, Cabang	Patrol/ Survey	16 Jan	20 Jan	5	87	Tiger's footprint. Arrest suspect of bird theft and timber theft.
Way Kanan, Capangan, Pedamaran, PLG.	Patrol/ Survey	26 Jan	31 Jan	6	60	Signs of rhino. Area is safe.
Bungur, Ogai, Way Bincung, Way Tidung, Bungur.	Patrol/ Survey	6 Feb	11 Feb	6	57	-
Way Kanan, Kuala Kambas, Pedamaran, Camp C, PLG.	Patrol/ Survey	17 Feb	22 Feb	6	49	Signs of rhino between Pedamaran and Jembat Seling. Area is safe.
Way Kanan, Kuala Kambas, Wako, Cabang, Way Rasau, Bungur.	Patrol	26 Feb	3 Mar	6	244	Arrest 2 suspects of illegal logging.
Pesanggrahan, Kali Batin, Abu.	Patrol/ Survey	5 Mar	11 Mar	7	45	Signs of rhino and tiger. Encountered illegal logging activity around Kalibatin.
Pos Way Kanan, D1, Camp Murai, Wako Benteng, D1.	Patrol/ Survey	15 Mar	20 Mar	6	50	Signs of rhino and tiger. Area is safe.
Pos Way Kanan, D2, Rawa Lado, Pos Way Kanan.	Other	23 Mar	23 Mar	1	18	Tiger's footprints and scratch.
Way Kanan, Rawa Badak, Purbolinggo, Perambahan	Patrol/ Survey	28 Mar	1 Apr	5	24	Rhino's food and scratch also tiger's footprint.
Way Gading, Way Tidung, Way Bincung, Way Ogar.	Patrol/ Survey	27 Jan	1 Feb	6	24	No illegal activity.
Way Tulung Sula, Way Tidung.	Patrol	6 Feb	11 Feb	6	43	Destroyed a few timber log.
Karangsari, Way Kambas, Lapangan Kijang.	Patrol/ Survey	17 Feb	20 Feb	4	30	No signs of rhino except tiger. No illegal poaching.
Karangsari.	Patrol	21 Feb	22 Feb	2	8	No illegal poaching.
Jl. Jagaweng, Way Batin, Way Kanan.	Patrol/ Survey	9 Mar	13 Mar	5	20	Tiger's food. Area is safe.
Way Kanan, Camp Mini, Jembat Seling, PLG.	Patrol/ Survey	4 Jan	9 Jan	6	39	Signs of rhino and tiger.
Way Kanan, Camp D1, Gerbang Tol, D2.	Patrol/ Survey	14 Jan	19 Jan	6	26	Signs of rhino and tiger. Area is safe.
Camp C, PLG.	Patrol/ Survey	24 Jan	28 Jan	5	27	Signs of tiger and other wildlife.
Posdal, Tulung Sula, Perambahan.	Patrol/ Survey	30 Jan	30 Jan	1	7	Encountered animal trap.
D2, Srijarden, Jalur Jeruk, Camp Tarzan, Camp Sore, Tanah Merah, D1.	Patrol/ Survey	25 Feb	2 Mar	6	20	Signs of rhino and tiger. Area is safe.
D2, Rawa Badak, Air Hitam, D1.	Patrol/ Survey	8 Mar	13 Mar	6	39	Signs of rhino and tiger.
D1, Air Hitam, Barki, Sentral Wako, D1.	Patrol/ Survey	17 Mar	21 Mar	5	33	Signs of rhino and tiger.
Camp C, Jembat Seling, Wara Jambu, PLG.	Patrol/ Survey	29 Mar	3 Apr	6	23	Signs of rhino and tiger in ex logging tracks.
Bungur, Penanggungan, Bincung, Ogay, Rantau Panjang, Bungur.	Patrol	4 Jan	9 Jan	6	52	Timber theft.
Rawa Bulus, Way Kanan Atas,	Patrol	14	19	6	21	Signs of rhino. Area is safe.

Location	Activity	Start Date	End Date	Days	Length (Km)	Remarks
Perambahan, Abu.	Survey	Jan	Jan			
D2, Kalibiru, Kalibiru atas, Sirjoden, Rawa Badak, D2.	Patrol/ Survey	25 Jan	30 Jan	6	28	Signs of rhino, tiger, elephant, and deer.
Way Kanan, Kuala Kambas, Wako, Rasau.	Patrol/ Survey	5 Feb	9 Feb	5	75	No sign of rhino except tiger and tapir. Arrest suspect of forest encroachment.
R1, TKP Parmin, D2.	Patrol/ Survey	15 Feb	20 Feb	6	30	Signs of rhino and tiger (fresh). Encountered traces of illegal poaching.
Rasau, Pinang Merah, Camp Dewi, Way Bincung, Way Ogai.	Patrol/ Survey	16 Feb	21 Feb	6	32	No rhino sign. To frustrated a group of illegal poaching.
Capangan, Kikuk, Sekopang.	Patrol/ Survey	18 Mar	21 Mar	4	60	No rhino sign.
Posdal, Susukan Baru, Sartam.	Patrol	28 Mar	28 Mar	1	49	Enabled to anticipated illegal logging and poaching activity in the area.
Posdal, SRS, Kalibatin, Way Menara.	Patrol	30 Mar	4 Apr	6	22	Encountered ex bird theft and timber theft.
Way Tulung Sula, Way Kanan.	Patrol/ Survey	7 Mar	12 Mar	6	29	No rhino sign except tiger.
Pos Way Kanan, Kambas Kecil, Jembat Seling, Camp C, Pos Way Kanan.	Patrol/ Survey	17 Mar	22 Mar	6	28	No sign of rhino nor tiger. Area is safe.
PLG, Rawa Jambu, Jembat Seling, Saporu, Braja Luhur.	Patrol/ Survey	388 02	1 Apr	6	50	Signs of rhino. Area is safe.
Way Kanan, Macan Lompat, Karaoke, Perambahan.	Patrol/ Survey	14 Jan	18 Jan	5	25	Signs of tiger. No new rhino concentration area. Arrest one suspect of traditional hunting.
Rawa Lintah, Beruang Mati, Lampu Pecah, D1 Way Kanan.	Patrol/ Survey	25 Jan	30 Jan	6	39	Signs of rhino and tiger. No illegal activity (Area is safe).
Way Kanan, Kuala Kambas, Wako, Sukat, D1.	Patrol/ Survey	5 Feb	10 Feb	6	83	Signs of rhino and tiger.
Way Kanan, D1, Camp Sore, Kikuk, Kuala Kambas.	Patrol/ Survey	16 Feb	21 Feb	6	78	Signs of rhino and tiger. No illegal activity.
Rawa Lintah, Beruang Mati, Air Hitam, D1, Way Kanan.	Patrol/ Survey	25 Feb	2 Mar	6	47	Signs of rhino. No illegal poaching (trap setting).
Posdal, Way Batin, Saporu, PLG.	Patrol/ Survey	8 Mar	13 Mar	6	36	Signs of rhino, tiger and other wildlife. Area is safe.
Way Kanan, Kuala Kambas, Wako.	Patrol	18 Mar	19 Mar	2	79	Patrolling failed because the boat has broken.
Perambahan, Way Kanan Atas, Perambahan.	Patrol	20 Mar	23 Mar	4	14	No sign of rhino and tiger.
Way Kanan, Kuala Kambas, Wako.	Patrol/ Survey	28 Mar	2 Apr	6	14	Enabled to monitored other wildlife.
D1, Kemang, Beruang, Murai, Camp Sore, D1.	Patrol/ Survey	5 Jan	10 Jan	6	32	Signs of rhino and tiger. Area is safe.
Piang ijo, Jalur 12, PLG, Piang Ijo.	Patrol/ Survey	14 Jan	19 Jan	6	20	Rhino's wallow.
Posdal, Way Batin, Perambahan, Daerah Abu.	Patrol/ Survey	5 Feb	9 Feb	5	16	Rhino's food. Area is safe.

### WAY KAMBAS NP

### Q2 (April - June)

Pos Way Kanan, Rawa Lintah, Kemang, D1.	Patrol/ Survey	7 Apr	12 Apr	6	50	Signs of rhino. Area is safe.
Way Kambas, Way Kapuk, Way Batu, Penet.	Patrol/ Survey	5 May	12 May	8	48	No rhino sign. Prints of tiger. Encountered fish theft.
Muara Jaya, Way Anda, W. Gading.	Patrol	19 May	25 May	7	36	Encountered no illegal activity except remnant of timber theft and burned areas.
Way Kanan, Capangan, Sekapuk, Kuala Kambas.	Patrol	3 Jun	8 Jun	6	69	Area is safe
Resort Way Kanan	Patrol	10 Jun	15 Jun	6	80	Encountered 163 illegal camps, 60 plates of salted fish of 107 families and 363 people lived in. Execution 58 hunting

Location	Activity	Start Date	End Date	Days	Length (Km)	Remarks
						dogs.
Susukan Baru, Sartam, Rawa Andi, Way Sukadana.	Patrol/Survey	18 Jun	24 Jun	7	33	Encountered forest fire. Encountered burned animal bones. Encountered also rattan and timber theft.
Perambahan, Sartam, Rawa Andi, Mataram, Bungur.	Patrol	13 Apr	18 Apr	6	30	Encountered residue of timber theft in Mataram. Ambush bird catching (suspect escaped).
Susukan Baru, Ular Kadut, Meranggi, Rantau Jaya.	Patrol	20 Apr	25 Apr	6	42	Encountered illegal camp of poacher. Timber theft.
Way Kanan, Kuala Kambas, Pedamaran, Jembatan Seling, PLG.	Patrol/Survey	20 May	25 May	6	49	Tiger's prints.
Way Kanan, Opu, Rasau.	Patrol/Survey	3 Jun	8 Jun	6	43	Signs of rhino and tiger. Ambush the suspects of illegal logging.
Posdal, Way Kanan, Rawa Bulus.	Patrol/Survey	14 Jun	18 Jun	5	21	Signs of rhino and some active wallows of rhino around the river of Way Kanan.
Bungur, Rasau, Pinang Merah.	Patrol	22 Jun	25 Jun	4	58	Blew up illegal poaching. Identification on 2 boats loaded by timber log.
Rawa Bunder, G. Abu, Way Kanan Atas.	Patrol/Survey	8 Apr	10 Apr	3	19	Signs of rhino around Perambahan.
D2, Jl. Jorden, Tarsan, R. Badak, D2.	Patrol/Survey	21 Apr	25 Apr	5	30	Signs of rhino, tiger, and tapir. No illegal activity encountered.
Posdal, Perbatasan TN.	Patrol	16 May	17 May	2	7	-
TNBBS = Seksi Konservasi Liwa, Lampung Barat.	Lain-Lain	5 Jun	8 Jun	4	0	-
PLG, Kali Batin, Way Kanan.	Patrol/Survey	15 Jun	20 Jun	6	20	Old rhino wallow (<6 months).
Bungur, Rasau, Cabang.	Patrol	22 Jun	24 Jun	3	73	Ambush suspects of illegal logging.
D2, Way Kanan Atas, Perambahan.	Patrol/Survey	8 Apr	12 Apr	5	16	Prints and scratches of tiger.
D2, Rawa Badak, Macan Loncat, Talang Aceh, C. Opu, C. Penanggungan, Bungur.	Patrol	4 May	10 May	7	72	Encountered signs of human activity (forest intruders) and burned out the forest in two different locations. Signs of tiger.
Way Kanan, Rawa Badak, Wir.	Patrol/Survey	14 Jun	19 Jun	6	25	No sign of rhino nor tiger since it's rained. Area is safe.
Rawa Lintah, Sekapuk, Beruang, R. Kemang.	Patrol/Survey	21 Apr	25 Apr	5	38	Signs of rhino and tiger.
Camp D1, W. Wako, Rasau.	Patrol/Survey	3 Jun	8 Jun	6	34	Signs of rhino and tiger. Encountered residue of timber theft
Way Sukadana.	Patrol	13 Jun	14 Jun	2	2	No illegal activity (Area is safe).
Camp C, Sidodadi, Braja Yekti.	Patrol/Survey	15 Jun	18 Jun	4	16	No rhino sign. No illegal activity.
D2, Srijarden, Camp Tarzan, Camp Sore, D1.	Patrol/Survey	7 Apr	11 Apr	5	30	A new fresh rhino's footprints (small size). Also prints of tiger and tapir. The tracks Area is safe.
Rawa Kerek, Kali Batin, Posdal.	Patrol	13 Apr	14 Apr	2	12	Arrest 2 suspects of fish theft. Encountered ex-timber theft.
Posdal, Way Kanan Atas, Perambahan.	Patrol/Survey	21 Apr	26 Apr	6	22	Rhino's food and prints of tiger.
Sartam, Rawa Andi, Camp. Opu, Mundu, Sumpah, Bincung, Ogay.	Patrol	4 May	11 May	8	57	Encountered points of arson (forest fire) and 2 small boat of fish theft (illegal fishing).
Pos Way Kanan, Kuala Kambas.	Patrol	13 May	15 May	3	37	Area is safe
Camp D1, Camp 5000, Karaoke, RI Gambah.	Patrol/Survey	19 May	25 May	7	48	Signs of rhino and tiger.

Location	Activity	Start Date	End Date	Days	Length (Km)	Remarks
Way Kanan, Kuala Kambas	Patrol	29 May	30 May	2	44	-
Camp Mini, Jembat Seling, PLG.	Patrol/ Survey	3 Jun	7 Jun	5	27	No rhino sign.
D1, Air Hitam, Murai, Beruang Mati, L. Pecah, Rawa Lintah.	Patrol/ Survey	4 May	10 May	7	51	Signs of rhino. No illegal activity encountered.
D2, Tarsan, Wako Benteng, Sekapuk, Kuala Kambas.	Patrol/ Survey	19 May	25 May	7	49	Signs of rhino and tiger.
<b>WAY KAMBAS NP Q3 (July - September)</b>						
Perambahan.	Patrol	15 Jul	16 Jul	2	5,50	Find location where an elephant death in Perambahan. The elephant death because of sick.
Plang Ijo, PLG.	Other	19 Jul	20 Jul	2	0,00	-
SRS, Camp C, Pos Way Kanan.	Expedition WK I	22 Aug	24 Aug	3	21,00	Signs of rhino (old)
D2, Rawa Badak, Way Gorong, D1.	Expedition WK I	22 Aug	25 Aug	4	28,00	Signs of rhino and tiger. Area is safe
D2, Rawa Badak, Macan Loncat, C. 5000, C. Sore, D1.	Expedition WK I	22 Aug	25 Aug	4	31,70	Signs of rhino. No illegal activity.
Rawa Lintah, Kuala Kambas.	Expedition WK I	22 Aug	25 Aug	4	43,60	Encode vegetation.
Penet, Botol, Way Penet.	Expedition WK I	22 Aug	25 Aug	4	18,40	No sign of rhino nor tiger.
Susukan Baru.	Expedition WK I	22 Aug	25 Aug	4	7,00	None.
Keramat, Cabang.	Expedition WK I	22 Aug	25 Aug	4	7,00	No rhino sign nor tiger. Encountered tracks of illegal logging.
Capangan, Kambas Kecil, D1.	Expedition WK I	22 Aug	25 Aug	4	14,00	No sign of rhino nor tiger. Arrest suspect of bird catching.
Bungur, Ogay, Rajawali, Bungur.	Expedition WK I	22 Aug	25 Aug	4	65,00	No sign of rhino nor tiger.
Tegal Yoso, Cabang Sartam, Karoke.	Expedition WK I	22 Aug	25 Aug	4	20,00	Encountered ex arson along the transect.
Bungur, Mundu, Tidung, Bungur.	Expedition WK I	22 Aug	26 Aug	5	25,00	Signs of elephant. Encountered remnant of forest fired and timber theft.
Pos Penen, Pedamaran, PLG.	Expedition WK I	22 Aug	26 Aug	5	35,00	Prints of tapir and tiger. Encountered timber theft.
Perambahan, Kali Batir. Atas, SRS.	Expedition WK I	22 Aug	25 Aug	4	6,00	Prints of elephant, tapir, etc. Encode vegetation.
JICA, Babakan Bambang, Kali Batir.	Expedition WK I	22 Aug	26 Aug	5	15,50	Rhino's dung.
Wako, Sekopong, Sekapuk, Capangan.	Expedition WK I	22 Aug	26 Aug	5	16,80	Tiger's scratches.
Wako Gubug, Wako Benteng, D1.	Expedition WK I	22 Aug	26 Aug	5	21,50	No sign of rhino nor tiger.
Pos Wako, Rasau.	Expedition WK I	22 Aug	27 Aug	6	29,70	Rhino's dung and tiger's scratches.
Way Binjai, JICA.	Patrol	30 Aug	30 Aug	1	6,00	Encountered animal traps (about a week set up).
Way Penet.	Expedition WK I	22 Aug	24 Aug	3	15,60	-
Plangkawati, Braja Asri, Silir Agung, Lab. Ratu, Proyek Pancasila.	Evacuatio n Ratu	20 Sep	20 Sep	1	34,40	Succeed to evacuate "Ratu" into SRS in Area is safe.
Way Kanan, Camp D1, Kali Biru Atas, Way Kanan.	Patrol/ Survey	1 Jul	5 Jul	5	32,50	Signs of rhino such as footprints, wallow and scratches. Also tiger's prints and scratches. No illegal activity (Area is safe).
Susukan Baru, Rawa Andi. Ular	Patrol	31 Jul	5 Aug	6	42,00	Arrest a suspect of illegal poaching and

Location	Activity	Start Date	End Date	Days	Length (Km)	Remarks
Kadut, Tidung, Lais.		Aug	Sep			forest fire.
Way Kanan, Kuala Kambas, Wako, Rasau.	Patrol/Survey	22 Sep	27 Sep	6	16,00	Tiger's scratches. Encountered timber theft used chains aw.
Posdal, Rawa Kerek, JICA.	Patrol	30 Sep	2 Oct	3	20,00	Encountered 71 animal traps.
Susukan Baru, Sartam, Rawa Andi, Meranggi.	Patrol	1 Jul	7 Jul	7	32,00	Signs of group of elephant. Encountered arson.
Pos Way Kanan, Camp C, Kepala Kerbau, Saporu, PLG.	Patrol/Survey	12 Jul	16 Jul	5	32,20	No rhino sign except tapir.
Tegal Yoso.	Patrol	1 Aug	1 Aug	1	2,10	Arrest suspects of illegal logging.
Toto Projo, Rantau Jaya.	Patrol	2 Aug	6 Aug	5	14,10	Encountered timber theft around Tanjung Tirtu. Destroy more or less 10 tiger traps.
D2, R. Sumpah, Camp.Nanas, Rantau Panjang.	Patrol/Survey	10 Aug	14 Aug	5	51,20	Signs of rhino and tiger. Arrest 3 suspects of timber theft and secure the evidences.
Rantau, Panjang.	Other	19 Aug	20 Aug	2	16,00	-
Way Kanan, Kuala Kambas, Pedamaran, Karang Anyar.	Patrol/Survey	10 Sep	14 Sep	5	59,00	Rhino's footprints (old and new) between Pedamaran and Jembat Seling. Defeat illegal fishing.
Resort Plang Ijo.	Patrol	28 Sep	30 Sep	3	35,00	Forest encroachment.
Posdal, SRS, Way Kanan.	Patrol	4 Jul	7 Jul	4	12,24	Area is safe.
Posdal, Way Batin, Rawa Badak, Rawa Gajah.	Patrol/Survey	12 Jul	16 Jul	5	18,50	Signs of rhino.
PLG, Rawa Jambu, GnRH, PLG.	Patrol/Survey	2 Aug	6 Aug	5	27,00	Signs of rhino and tiger.
Saporu, Jembat Seling, Leter L.	Patrol/Survey	11 Aug	15 Aug	5	27,00	No rhino sign. Defeat illegal fishing use electric sock (3 people). Found tapir.
PLG, Rawa Jambu, Kali Batin, Posdal.	Patrol/Survey	1 Sep	6 Sep	6	40,00	No rhino sign. Prints of tiger. Encountered illegal fishing in Kali Batin.
PLG, Gn. Saporu, Karang Anyar.	Patrol	22 Sep	27 Sep	6	35,50	Area is safe.
D1, Kemang, Tarsan, D1.	Patrol/Survey	1 Aug	6 Aug	6	24,60	Signs of rhino and tiger.
Jalur Jagawana, Way Kanan Atas, Perambahan.	Patrol/Survey	11 Aug	15 Aug	5	15,00	Signs of rhino.
D1, Kemang, Kali Biru, D2.	Patrol/Survey	2 Sep	7 Sep	6	26,30	Signs of rhino and tiger.
Way Kanan, D1.	Patrol	12 Sep	13 Sep	2	18,50	-
Way Kanan, Kuala Kambas, Wako, D1.	Patrol/Survey	22 Sep	25 Sep	4	66,30	Signs of rhino in Wako.
Jalur BW, Temon, Way Kanan Atas, Jl. Karaoke, Rawa Badak, D2, Pos Way Kanan.	Patrol/Survey	3 Jul	7 Jul	5	22,00	Signs of rhino and tiger. Area is safe
D2, D1, Air Hitam, Jelutung Kembar, Sirjoden, D2.	Patrol/Survey	12 Jul	17 Jul	6	32,00	Signs of rhino and tiger. Area is safe
Way Kambas, Seling.	Patrol/Survey	21 Jul	25 Jul	5	23,30	No sign of rhino nor tiger. Area is safe
D2, Air Putih, Way Areng, D2.	Patrol/Survey	2 Aug	7 Aug	6	27,30	Signs of rhino and tiger. No illegal activity.
Camp D1, Camp Sore, Way Areng, Camp D2.	Patrol/Survey	10 Aug	13 Aug	4	16,00	Signs of rhino and tiger. Area is safe
Camp D1, Air Hitam, Way Arang.	Patrol/Survey	2 Sep	7 Sep	6	21,50	Found rhino's footprints that sizes different with former prints.
D2, Rawa Badak, Gerbang Tol, Air Hitam, Camp Siang, D1, D2.	Patrol/Survey	12 Sep	17 Sep	6	35,00	Signs of rhino and tiger. Area is safe

Location	Activity	Start Date	End Date	Days	Length (Km)	Remarks
Way Kanan, Way Arang, Camp Sore, Camp D1.	Patrol/Survey	22 Sep	27 Sep	6	23,00	Rhino's signs around the edge of Way Arang river. Arrest 6 suspects of illegal fishing.
Kambas Kecil, Wako Benteng, Camp D1.	Patrol/Survey	1 Jul	7 Jul	7	26,50	Signs of rhino and tiger.
Jalur 12, SRS.	Patrol/Survey	10 Jul	15 Jul	6	18,50	No new sign of rhino.
Camp D2, Rawa Badak, Perambahan.	Patrol/Survey	20 Jul	25 Jul	6	24,50	Signs of rhino and tiger. No illegal activity.
Way Kanan, Way Kambas Kecil, D1.	Patrol/Survey	2 Aug	6 Aug	5	13,50	Signs of rhino and tiger. The areas still quite Area is safe.
Way Kanan, D1, Way Kambas kecil.	Patrol/Survey	10 Aug	15 Aug	6	21,20	Signs of rhino and tiger.
Posdal, Kali Batin, Way Kanan, Perambahan.	Patrol/Survey	11 Sep	17 Sep	7	39,00	Signs of rhino. Encountered illegal fishing (fish theft).
D1, Kambas Kecil, Beruang Mati, Air Hitam, Kalibiru, D2.	Patrol/Survey	13 Jul	19 Jul	7	41,00	Signs of rhino and tiger.
D2, Macan Loncat, Way Kanan Atas, Kalibatin, Posdal.	Patrol/Survey	31 Jul	5 Aug	6	33,30	Signs of rhino. Area is safe.
D1, Kambas Kecil, Way Sekapuk, Camp D1.	Patrol/Survey	1 Sep	6 Sep	6	25,40	Signs of rhino and tiger.
Kambas Kecil, Way Sekapuk Atas, Camp D1.	Patrol/Survey	10 Sep	14 Sep	5	21,00	Signs of rhino and tiger. Also prints of infant rhino.
Proyek Pancasila, Labuan Ratu, Plangkawati, Braja Asri, Silir Agung, Kelahang.	Evacuation Ratu	21 Sep	21 Sep	1	34,40	Able to collect Ratu's footprints.
Plangkawati, Margayu, JICA, SRS.	Evacuation Ratu	22 Sep	26 Sep	5	50,30	Investigation reported that "Ratu" came out of the forest for disturbing by people fishing around the rhino habitat.

#### WAY KAMBAS NP

#### Q4 (October - December)

Posdal, Binjai, Margayu, PLG, Perambahan.	Patrol	7 Oct	1 Nov	26	0,00	To defeat illegal poaching. Destroy animal traps set on side of forest. Secure an air rifle.
Way Kanan, Kuala Kambas, Pedamaran, Jembatan Seling, PLG.	Patrol/Survey	19 Nov	23 Nov	5	48,50	Rhino's signs in Jembatan Seling. Encountered illegal fishing in Pedamaran.
D2, Rawa Badak, Karaoke, Tompul, Perambahan.	Patrol/Survey	8 Dec	13 Dec	6	32,00	Rhino's signs. Area is safe.
Plang Ijo, PLG.	Patrol	1 Oct	2 Oct	2	12,00	Encountered 5 animal traps.
Plang Ijo, Perambahan.	Patrol	3 Oct	4 Oct	2	30,00	Area is safe.
Perambahan.	Patrol	7 Oct	12 Oct	6	50,00	To defeat illegal poaching activity.
Pos Way Kanan, Rawa Lintah, Sekapok, Beruang.	Patrol/Survey	19 Nov	23 Nov	5	49,20	Rhino's signs.
Way Kanan, Perambahan.	Patrol/Survey	19 Nov	24 Nov	6	27,50	Rhino's signs.
Way Bungur, Way Nibung, Rasau.	Patrol	29 Nov	2 Dec	4	10,00	Arrest 4 suspects of illegal logging.
Tegal Yoso, Way Anda, Bungur.	Patrol	27 Dec	1 Jan	6	20,00	Encountered a shell of bullet type LA.
Plang Ijo, PLG.	Patrol	1 Oct	2 Oct	2	6,00	Area is safe.
Posdal, Binjai, Margayu, PLG, Perambahan.	Patrol	24 Oct	1 Nov	9	0,00	-
Tegal Yoso, Rawa Andi, Meranggi, Bungur.	Patrol	28 Nov	3 Dec	6	24,40	Sings of forest intruder.
Camp Mini, Jembatan Seling, PLG.	Patrol/Survey	8 Dec	13 Dec	6	29,80	No rhino signs just old and inactive wallow. Encountered a bicycle of

Location	Activity	Start Date	End Date	Days	Length (Km)	Remarks
						fisherman.
Way Kanan, Wako, Rasau, Cabang.	Patrol/Survey	17 Dec	22 Dec	6	26,20	Rhino's signs. Encountered wood log as much as 5 m3.
G. Hasan, Temon, Rawa Badak, D2.	Patrol/Survey	27 Dec	31 Dec	5	23,60	No rhino sign. A lot of elephant activities.
Kali Batin sekitar SRS, Posdal.	Patrol/Survey	7 Oct	11 Oct	5	27,00	Tiger's prints. Encountered river of Negara Batin has been poisoned.
Way Kanan, Way Batu, Sekapuk, Kuala Kambas.	Patrol	17 Oct	22 Oct	6	60,30	Area is safe.
D1, Air Hitam, Wako, D1.	Patrol/Survey	19 Nov	24 Nov	6	46,00	Rhino's signs. Area is safe.
D1, Gerbang Tol, Rawa Badak, D2.	Patrol/Survey	8 Dec	13 Dec	6	37,30	Rhino's signs. No illegal poaching.
Bungur, Penanggungan, Rasau, Cabang.	Patrol/Survey	17 Dec	22 Dec	6	57,50	Rhino's dung. Encountered timber theft and illegal fishing.
PLG, Rawa Jambu, Braja Yekti.	Patrol	27 Dec	30 Dec	4	12,50	Area is safe.
D2, C. Badak, Way Kanan.	Patrol/Survey	7 Oct	11 Oct	5	17,00	Signs of rhino and tiger. No illegal poaching.
Posdal, Way Tulung Sula, Posdal	Patrol/Survey	17 Oct	21 Oct	5	22,00	No rhino sign. No illegal poaching.
D1, Gerbang Tol, Srijoden, D2.	Patrol/Survey	20 Nov	24 Nov	5	26,50	Rhino's signs. Area is safe.
Gubuk Hasan, Camp Drajat, Macan Loncat, Rawa Badak, Pos D2.	Patrol/Survey	17 Dec	21 Dec	5	20,00	Rhino's signs. Encountered ex forest fire and other illegal activity.
D1, Wako Benteng, Sentral Wako, D2	Patrol/Survey	7 Oct	12 Oct	6	36,50	Signs of rhino and tiger. Encountered 7 tiger traps.

Location	Activity	Start Date	End Date	Days	Length (Km)	Remarks
<b>UJUNG KULON NP Q1 (January - March)</b>						
Transek 3, 4, 5, 6 Resort Kalejetan Kr. Ranjang.	Patrol/Survey	11 Jan	18 Jan	8	56	Rhino's footprints in the direction of west Ermokla areas. No forest disturbance.
Blok Citelang, Jamang.	Patrol/Survey	23 Jan	30 Jan	8	42	Footprints and wallows of rhino. Area is safe.
Blok Cibandawoh, Cikeusik, Resort Kr. Ranjang.	Patrol/Survey	12 Feb	19 Feb	8	50	Rhino's footprints (5 set). Encountered 2 group of local fisherman.
Blok Cijungkulon, Cidaon, Cikuya, Cikembang, Cibom	Patrol/Survey	21 Feb	3 Mar	11	48	Rhino's footprints. No forest disturbance.
Blok Cidaon, Resort Peucang, Blok Ermokla, Resort	Patrol/Survey	1 Mar	3 Mar	3	0	-
Blok Cidaon, Resort Peucang, Blok Ermokla, Resort	Patrol/Survey	16 Mar	29 Mar	14	96	Rhino's footprint (1 set). Area is safe.
Tj. Lame, Cikaung, Cipakis, Cegog, Erjeruk, Handoy	Patrol	1 Jan	20 Jan	20	76	Area is safe
Tj. Lame, Cikaung, Sempur, Geundir, Cipakis, Cegog	Patrol	1 Feb	21 Feb	21	96	Traditional gun ('locok') used by the owner to secure their property.
Tj. Lame, P. Peucang, Blok Cidaon, Cikembang, Cibunar	Patrol/Survey	27 Feb	19 Mar	21	113	Rhino monitored approached rivers (DAS).
Kr. Ranjang, Bandawoh, Cikeusik, Citadahan, Cibunar	Patrol/Survey	1 Jan	10 Jan	10	66	Rhino's signs.
Kr. Ranjang, Bandawoh, Cikeusik, Citadahan.	Patrol	20 Jan	30 Jan	11	59	Area is safe
Tj. Lame, Kalejetan, Kr. Ranjang, Bandawoh, Cilkeusik	Patrol	1 Feb	10 Feb	10	45	-
Blok Cigenter.	Patrol/Survey	21 Feb	1 Mar	9	29	Rhino's footprints. Indirect sighting adult male Javan rhino.
Kr. Ranjang, Bandawoh, Transek 8.	Patrol/Survey	1 Mar	10 Mar	10	47	-
Cimayang, Citadahan, Cikeusik, Bandawoh, Kr. Ranjang.	Patrol/Survey	20 Mar	30 Mar	11	54	Enable to monitor rhino concentration areas.
<b>UJUNG KULON NP Q2 (April - June)</b>						
Blok Ciermokla, Kalejetan, Blok Cigenter, Transek 8 (utara selatan), Cibunar, Transek 13, Cidaon, P. Peucang	Patrol/Survey	11 Apr	29 Apr	19	70,00	Fresh footprints (3 sets) and wallow. Area is safe.
TNBBS = Wilayah Kerja RPU BTNBBS Lampung.	"Refreshment Program"	16 May	31 May	16	0,00	-
Resort Karang Ranjang, Kalejetan.	Patrol/Survey	1 Jun	19 Jun	19	45,00	Rhino's footprints in Ciheucit Kalejetan. Tracks were saved.
Tj. Lame, Wilayah II Handeuleum, Handeuleum, Cigenter, Cikeuyeup.	Patrol	1 Apr	20 Apr	20	46,00	To reduce park disturbing. Vcgetation inventory rhino's food in Blok Handeuleum.
TNBBS = Kotaagung, Camp 50, 32, 30, 26, Blok Pemerihan.	"Refreshment Program"	3 May	15 May	13	0,00	-
Tj. Lame, P. Handeuleum, Blok Cigenter, Gardu Buruk, Transek 8, Cibandawoh, Kr. Ranjang.	Patrol	11 Jun	30 Jun	20	45,00	Area is safe.
TNWK = Rawa Lintah, Blok Beruang, Gorong II, Blok D1.	"Refreshment Program"	21 Apr	25 Apr	5	0,00	Known rhino concentration areas.
Cigenter, Citengah, Bandawoh, Pangukusan, Kr. Ranjang, Kalejetan.	Patrol/Survey	4 May	8 May	5	28,50	Signs of rhino. Enabled monitoring rhino habitat.
Legon Waru, Cikeusik, Kr. Ranjang.	Patrol/Survey	1 Jun	10 Jun	10	32,80	Signs of rhino. Enabled monitoring rhino habitat.



Location	Activity	Start Date	End Date	Days	Length (Km)	Remarks
Cimayang, Citadahan, Cibunar, Cidaon.	Patrol/Survey	20 Jun	30 Jun	11	20.00	Signs of rhino (footprints and wallows). Enabled to secure the rhino habitat.

### UJUNG KULON NP

### Q3 (July - September)

Kr. Ranjang, Pangukusan, Bandawoh.	Patrol/Survey	21 Jul	30 Jul	10	86	No rhino signs. Area is safe.
DAS Cikalejetan, Blok Ciheucit, Blok Pangorok, Blok Ciperepet.	Patrol/Survey	1 Aug	9 Aug	9	70	New rhino footprints in Block Ciperepet. Encountered an illegal camp (empty).
Blok Cipakis, Ciermokla Timur, Ciermokla Barat, Cikanyere, Curug Cikacang.	Patrol	18 Aug	27 Aug	10	75	No forest disturbance.
DAS Ciperepet Gejang, DAS Cilintang Atas, Pangorok, Bandawoh, Pantai Selatan.	Patrol/Survey	2 Sep	10 Sep	9	60	Rhino's footprints in Block Hulu Ciperepet.
Handeuleum, Karang Ranjang.	Patrol	21 Sep	30 Sep	10	70	No illegal activity.
Tj. Lame, P. Handeuleum, S. Cigenter, Curug Cigenter, Kalejetan, Ciperepet, Cilintang, Karang Ranjang.	Patrol/Survey	1 Jul	10 Jul	10	36	Rhino signs.
Tj. Lame, P. Handeuleum, S. Cigenter, Curug Cigenter, Cigenter Atas, P. Peucang, Muara Cikuya dan Cidaon.	Patrol	21 Jul	30 Jul	10	15	Rhino's movement in Block Cigenter indicated that there was no alteration of rhino's tracks.
Tj. Lame, Ciperepet, Kr. Ranjang (Pangorok, Laban, Cisimping).	Patrol/Survey	1 Aug	10 Aug	10	22	In month of July and mid-August, rhinos moving around areas of Ciperepet, Cisimping, Cilintang and Block Kalejetan (Ciheucit).
Tj. Lame, Kr. Ranjang, Pangorok, Laban, Blok Cisimping.	Patrol/Survey	21 Aug	30 Aug	10	28	Rhino's movement still around of survey route of Block Kalejetan.
Tj. Lame, Handeuleum, Cigenter, Gardu Buruk, Cikeuyeup, Curug Cigenter.	Patrol/Survey	1 Sep	10 Sep	10	49	Rhino signs. Enable to decrease illegal poaching, forest destruction and illegal fishing.
Tj. Lame, Kalejetan, Aermokla, Cikarang, Ciheucit.	Patrol/Survey	21 Sep	30 Sep	10	40	Rhino signs.
Kr. Ranjang, Pangorok, Ciperepet, Kalejetan, Pangukusan.	Patrol/Survey	1 Jul	10 Jul	10	38	Rhino signs. Enable to monitor rhino range.
Kalejetan, Aermokla, Cegog, Gendir, Cihujan, Cikarang.	Patrol/Survey	20 Jul	30 Jul	11	26	Rhino signs. Enable to monitor rhino range.
Cigenter, Bandawoh, Kr. Ranjang, Tj. Alang-Alang.	Patrol/Survey	1 Aug	10 Aug	10	36	Rhino signs. Enable to monitor rhino range.
Legon Waru, Transek X, Cikeusik Timur, Bandawoh, Kr. Ranjang.	Patrol/Survey	20 Aug	30 Aug	11	42	Rhino signs.
Cilintang, Kr. Ranjang, Bandawoh.	Patrol/Survey	1 Sep	10 Sep	10	35	Rhino signs.
Kr. Ranjang, Cilintang, Ciperepet, Geundir, Kelejetan, Aermokla, Ranca Gebang.	Patrol/Survey	20 Sep	30 Sep	11	56	Rhino signs.

### UJUNG KULON NP

### Q4 (October - December)

Resort Karang Ranjang, Kalejetan.	Patrol	1 Oct	9 Oct	9	54	Area is safe. Major offence is illegal fishing for self consumption.
Resort Karang Ranjang, Kalejetan.	Patrol	20 Oct	30 Oct	11	70.00	No forest disturbance.
Blok Ciermokla, Kalejetan Timur, Resort Kalejetan.	Patrol/Survey	15 Nov	29 Nov	15	60.00	Rhino's fresh footprints in Block Cikanyere Kalejetan Timur. Area is safe.
Transek 14, Blok Cijengkol, Cinogar Barat.	Patrol/Survey	1 Dec	5 Dec	5	15.00	No rhino sign.
Kr. Ranjang, Pangorok, Seuseupan, Cilintang, Ciperepet.	Patrol/Survey	25 Dec	31 Dec	7	42.00	Rhino's footprints in Block Legon Kiara and moving to east perhaps Hulu Cipere-

Location	Activity	Start Date	End Date	Days	Length (Km)	Remarks
Tj. Lame, Handeuleum (DAS Cigenter, Gardu Buruk, Cikeuyeup).	Patrol	1 Oct	10 Oct	10	16	pet. Area is safe.
Tj. Lame, Cibandawoh, Pangukusan, Tereleng, Laban, DAS Cisimping & Lubuk, Pangorok (Trans 4), Seuseupan.	Patrol/ Survey	21 Oct	30 Oct	10	43,00	Rhino's signs.
Tj. Lame, Kr. Ranjang, Tereleng, Kalejetan, Seuseupan, P. Peucang, Cibom, Ciramea, Tj. Layar, Laban.	Patrol/ Survey	11 Nov	30 Nov	20	74,00	Rhinos moving in Block Sodong Sero and tracks of Kalejetan Legon Pakis. No illegal poaching encountered.
Tj. Lame, Kr. Ranjang, Cikeusik Timur, Transek IX (selatan utara), Citeulang.	Patrol/ Survey	1 Dec	10 Dec	10	32,50	Rhino signs.
Tj. Lame, Kr. Ranjang, Cikeusik Timur, Transek IX (selatan utara), Citeulang.	Patrol	21 Dec	30 Dec	10	35,00	Rhinos still moving in their range around Kr. Ranjang Kalejetan.
Kr. Ranjang, Bandawoh, Cikeuyeup, Ciperepet, Cicanolong, Kalejetan, Geundir.	Patrol/ Survey	1 Oct	10 Oct	10	48,00	Rhino's signs. Enabled to monitor anxious areas of offence.
Cibayoni, Dadali, Cisantri, Cibadak, Banjaran, Ciakar, Waduk, Cegog, Aermokla, Cipakis.	Patrol	20 Oct	30 Oct	11	23,99	Provide elucidation to villages around the park.
Cipakis, Aermokla, Kalejetan, Kr. Ranjang, Balagadigi.	Patrol	10 Nov	30 Nov	21	70,00	Enabled to monitor anxious areas of offence.
Cihujan, Cipakis, Cimahi, Citadahan, Hulu Citadahan, Cimayang.	Patrol/ Survey	1 Dec	10 Dec	10	25,00	Rhino signs.
Cipakis, Cihujan, Kr. Ranjang, Hulu Ciperepet, Cilintang, Kalejetan.	Patrol/ Survey	20 Dec	30 Dec	11	15	Rhino's signs. Enabled to monitor rhino home range.

## PROGRAM PERSONNEL

**PERSONNEL PERFORMANCE - 2005**

(Average Field Days / Month per-person)

<b>Bukit Barisan Selatan NP</b>		
Name of Personnel	Number of Days	Average Field Days / Month
Afrizal SL*	68	17 (4 Months)
Agung S**	330	30 (11 Months)
Agus Sulaeman	226	18,83 (12 Months)
Ayi*	68	17 (4 Months)
Bahara	225	18,75 (12 Months)
Budiono	203	16,92 (12 Months)
Didin Kamaludin	338	28,17 (12 Months)
Edi Rusmanto	203	16,92 (12 Months)
Hendra Wijaya	265	22,08 (12 Months)
Heryanto	289	24,08 (12 Months)
Jalisi	191	15,92 (12 Months)
Juni Effendi***	110	22,00 (5 Months)
Madnurzen	223	18,58 (12 Months)
Maman Suherman	226	18,83 (12 Months)
Marsum	203	16,92 (12 Months)
Merly Aroc Hulu	256	21,33 (12 Months)
Miskun	217	18,08 (12 Months)
Nang Jamadi*	120	30,00 (4 Months)
Olih*	68	17,00 (4 Months)
Rahman	171	14,25 (12 Months)
Romianto	300	25,00 (12 Months)
Samsu haryono	212	17,67 (12 Months)
Samsurizal	228	19,00 (12 Months)
Saptono	199	16,58 (12 Months)
Sudari	192	16,00 (12 Months)
Suharsono	242	20,17 (12 Months)
Suryadi	244	20,33 (12 Months)
Timbul TB	238	19,83 (12 Months)
Toho	248	20,67 (12 Months)
Uya Yogaswara	193	16,08 (12 Months)
Zen Afrial**	330	30 (11 Months)
Zulkifli	206	17,17 (12 Months)

**Note :**

\* Afrizal SL, Ayi, Nang Jamadi, Olih, Suparmin (Driver), and Drs. Arief Rubianto (ILEU) Coordinator, temporarily transferred to Kerinci Seblat to assist the Sumatran Rhino Rescue Project (SRRP) commencing April 2005.

\*\* Agung Setiono and Zen Afrial temporarily transferred to SRS Way Kambas commencing December 2005 in order to assist SRS Staff in handling the Sumatran Rhino "ROSSA"

\*\*\* Juni Effendy become RPU Driver in BBS commencing June 2005.

**Way Kambas NP**

Name of Personnel	Number of Days	Average Field Days / Month
Adly*	110	11 (10 Months)
Agus Riadi	216	18 (12 Months)
Agus Sunarko**	39	13 (3 Months)
Ali Mashuri*	143	13 (11 Months)
Amrodi	184	15.33 (12 Months)
Aris H	172	15.64 (11 Months)
Balyan Irawadi	156	13 (12 Months)
Bambang Meiyono	167	13.92 (12 Months)
Bambang Subianto*	131	13.1 (10 Months)
Bonari	173	14.42 (12 Months)
Boston Kaloko	189	15.75 (12 Months)
Daryono	185	15.42 (12 Months)
Encang Sutarna	176	14.67 (12 Months)
Ferry Agus Bangun	165	13.75 (12 Months)
Gunanto***	35	17.5 (2 Months)
Joko Iswanto	185	15.42 (12 Months)
Muslimin	187	15.58 (12 Months)
Nur Basuki	172	14.33 (12 Months)
Nurallim*	167	16.7 (10 Months)
Nurhadi*	165	16.5 (10 Months)
Rosdi Hartono	156	13 (12 Months)
Rustanto*	169	16.9 (10 Months)
Sugondo	183	15.25 (12 Months)
Suhadi	197	16.42 (12 Months)
Sujoko	163	13.58 (12 Months)
Supriyono	150	12.5 (12 Months)
Totok Riyadi	178	14.83 (12 Months)
Yuswardi	190	15.83 (12 Months)

Note :

\* Adly, Ali Mashuri, Bambang Subianto, Nurallim, Nurhadi and Rustanto member of Tiger Protection Units (TPUs) BTNBS, contract discontinued commencing November 2005 (the Tiger Program has stopped in BRS).  
 \*\* Agus Sunarko resigned on April 2005.  
 \*\*\* Gunanto resigned on March 2005.

## Ujung Kulon NP

Name of Personnel	Number of Days	Average Field Days / Month
Apud Saepudin*	129	18.43 (7 Months)
Atib	177	14.75 (12 Months)
Dendin Martin	237	19.75 (12 Months)
Diding***	126	21 (6 Months)
Haerudin	237	19.75 (12 Months)
Lamri**	31	15.5 (2 Months)
Mustary	197	16.42 (12 Months)
Muzakir	217	18.08 (12 Months)
Nana Suhana	253	21.08 (12 Months)
Sorhim	200	16.67 (12 Months)
Teguh Basuki	227	18.92 (12 Months)
Untung Sunarko	227	18.92 (12 Months)

Note :

\* Apud Saepudin resigned on September 2005 (promoted to be staff of Balai/PNS).  
 \*\* Lamry passed away on March 2005.  
 \*\*\* Diding starting June 2005.

## PROGRAM PERSONNEL 2005

Ir. Adi Susmianto, MSc.	Rhino Conservation Officer (RCO) – Indonesia
Dr. Nico van Strien, PhD	IRF/AsRSG Program Officer
Ir. Mega Haryanto, MSc.	Regional Consultant for Way Kambas NP.
Drs. Tamen R. Sitorus, MSc.	Regional Consultant for Bukit Barisan Selatan NP.
Ir. Puja Utama, MSc.	Regional Consultant for Ujung Kulon NP. ( <i>Start commencing October 2005</i> )
<b>Headquarter Offices (Bogor)</b>	
Ir. M. Waladi Isnan	Program Manager
Dadan D. Subrata, DVM	Coordinator Adm. and Database Supervisor
Shanty Mullydianthi, SE, MM	Administrative and Financial Assist.
R. Dewi M. Utami, SE	Adm. and Financial Assist. For the CEPF Grant

### FIELD PERSONNEL

TNBBS	TNWK	TNUK
Drs. Arief Rubianto (IC)	Andi Hari H, S.Hut(FC)	Uus Sudjasa, D. BsC.F (FC)
Suratman, S.Hut (FC))	Hartato (FA)	Andri Firmansyah (FA)
Titus Ramadhani, S.Hut (FA)	Suhadi (TL / FG)	Untung Sunarko (TL / FG)
Agus Sulaeman (TL / FG)	Sujoko (TL / FG)	Dendin Martin (TL / FG)
Didin Kamaludin (TL / FG)	Yuswardi (TL / FG)	Mustary (TL / FG)
Heryanto (TL / FG)	Amrodi	Apud Saepudin
Suharsono (TL / FG)	Ali Mashuri	Atib
Samsu Haryono (TL / FG)	Agus Riadi	Diding
Rustanto (TL / FG)	Agus Sulaeman	Sorhim
Saptono (TL / FG)	Balyan Irawadi	Teguh Basuki
Sudari (TL / FG)	Bambang Subianto	Hutbi Wirawan
Agung Setiono	Bambang Meiyono	Jazuli
Madnurzen	Bonari	Lamri
Maman Suherman	Boston Kaloko	Muzakir Watir
Rahman	Daryono	Nana Suhana
Suryadi	Encang Sutarna	
Zulkifli	Ferriagus Bangun	
Afrizal SL	Muslimin	
Ayi	Nur Basuki	
Bahara	Nuraiim	
Budiono	Nurhadi	
Edy Rusmanto	Gunanto	
Hendra Wijaya	Junaidi	
Jalisi	Joko Iswanto	
Marsum	Rosdi Hartono	
Miskun	Totok Riyadi	
Merly Aroc Hulu	Sujoko	
Olih	Sugondo	
Timbul TB	Suyana (D - <i>March 2005</i> )	
Toho Hutagalung	Yahmin (D)	
Uga Yogaswara		
Ujang Suryadi (ILEU Adm.)		
Sahroni		
Samsurizal		
Zen Afrial		
Juni Effendy (D)		
S. Waja (D)		

IC = ILEU Coordinator, FC = Field Coordinator; FA = Field Administrator; TL = Team leader; FG = Forest Guard, D = Driver.