

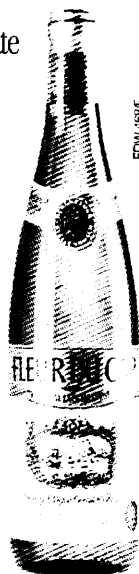
International Honours For Cape White Wine

ATHENS – GREECE, JULY 1988: At the 26th Monde Selection held in Athens, Fleur du Cap Special Late Harvest captured the major award – the Gold Medal with Palm Leaves for the highest points scored.

LONDON – ENGLAND, JULY 1988: In the 19th International Wine & Spirit Competition (Club Oenologique) Fleur du Cap Special Late Harvest took top honours – the Gold Award.

LONDON – CLUB OENOLOGIQUE, JULY 1988: As well as winning the Gold Award, Fleur du Cap Special Late Harvest won the Cape Wine Academy Trophy – the reward for The Best South African White Wine in the 1988 competition.

*Since entering Monde Selection for the first time in 1975, Fleur du Cap Special Late Harvest has won 13 consecutive Gold Medals.



FLEUR DU CAP



PRIDE OF THE CAPE NOBLE WINES

FLEUR DU CAP WINES ARE
AVAILABLE INTERNATIONALLY.

Northern white rhino a rarity

The white rhino, *Ceratotherium simum*, has become a rarity outside South Africa. The northern subspecies of this rhino, *Ceratotherium simum cottoni*, is regarded as one of the most endangered mammals in the world today. It is a cousin of *Ceratotherium simum simum*, the white rhino found in South Africa.

In 1980 only about 820 individuals of *C. s. cottoni* were left in Zaïre, the Central African Republic and the Sudan. Today, nine years later, all that is left is a single free-living population of 17 animals in the Garamba National Park in Zaïre, and another 12 in zoos outside Africa. Ten of the latter are in the Dvur Kralone Zoo in Czechoslovakia, and the other two in zoos in London and Khartoum. Attempts to get the rhinos in Dvur Kralone to breed have met with no success so far.

In an effort to facilitate the breeding

programme, a bull and two cows were translocated to San Diego Zoo (USA), where the southern subspecies of the white rhino were bred successfully. The bull presently in Khartoum will also be taken to San Diego in the near future.

Although there is little visible difference between the northern and southern subspecies, indications are that their DNA composition differs, a differentiation which probably developed over the past two million years.

The southern subspecies, too, almost disappeared from the face of the earth during the previous century, and if it had not been for the sustained efforts of the Natal Parks Board and later the National Parks Board as well, it would have been extinct by now.

Can *C. s. cottoni* still be saved? Only time will tell.

– Dr. G. de Graaff

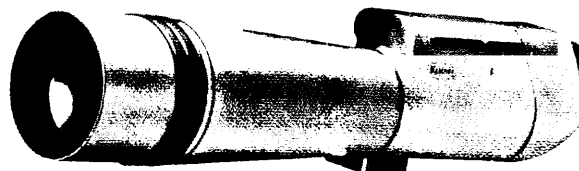
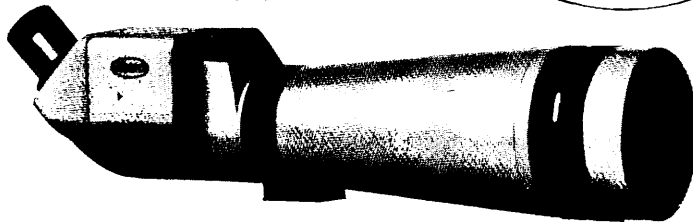
KOWA

YELLAND

Spotting Scopes

- SLR camera adaptability
- Rubber eyecup for comfort
- 20X to 60X zoom eyepieces

Kowa



A SUPERB IMAGE

FULL RANGE OF MODELS AVAILABLE

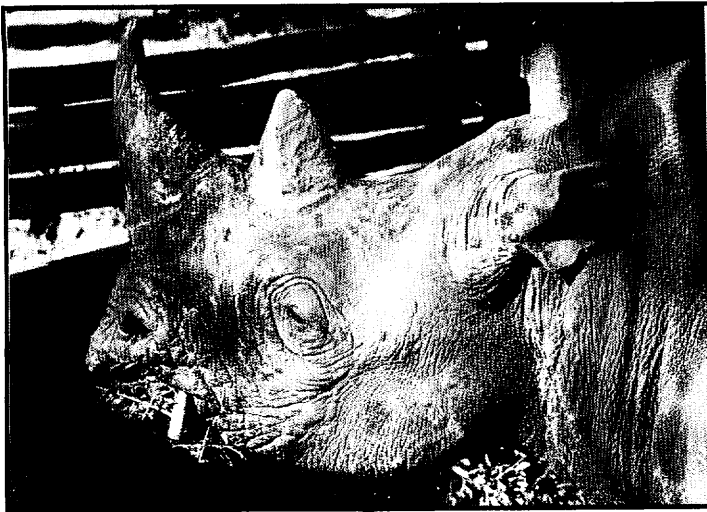
**YELLAND DRAWING OFFICE &
SURVEY CENTRE (PTY) LTD.**



JOHANNESBURG
TEL. (011) 805-3072

DURBAN
TEL. (031) 301-5337

CAPE TOWN
TEL. (021) 51-3963



Daar is 'n kenmerkende verskil tussen die snoete van 'n wit- en swartrenoster. Let op die spits bek van die swartrenoster (bo), Diceros bicornis, teenoor die breë bek van die witrenoster (regs). • There is an obvious difference between the muzzles of a white and black rhino. Note the peaky mouth of the black rhino (top), Diceros bicornis. The white rhino has a broad mouth and is also called the broad-lipped rhino.



White rhino. • Witrenoster.

FOR THE GAMEPARKS ...

7x35 WW
8x25
8x30
7x50

Day and
Nightglass

8x56
10x50
15x80



6x30
Well suited to use in poor
light conditions

... it must be a binocular from **STEINER** 
WEST GERMANY

anything else is only a compromise.

Sharp without focusing

No more struggling with complicated focusing devices.

No more frustration from missing the Bird.

once in focus, always in focus.

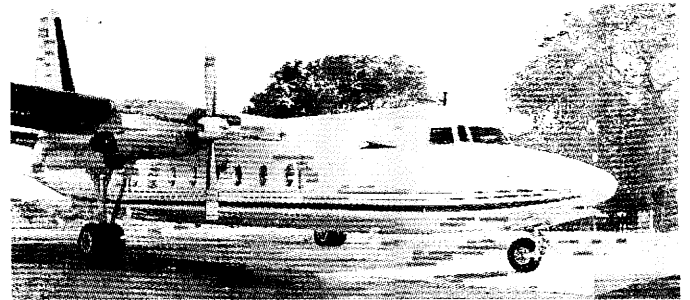
For a technical demonstration of the biggest selection of STEINER-Game viewing and Bird watching Binoculars in the Southern Hemisphere, visit our showroom.

There's one just right for you.

TEL: (011) 642-1180 SA AGENT **COMOPTIC**
1ST FLOOR, SWISS PARK BUILDING, 10 QUEENS ROAD, PARKTOWN, 2193

7:89

COMAIR—THE GREAT SOUTH AFRICAN SAFARI



We save you time and money with our special fly-in-Safari service! Fly into the dramatic wildlands of the African bush, with its big game, birds, space and tranquility. Take time to explore and discover the truly exciting heartbeat of Africa. Enjoy a meal under the stars, in a boma around the camp fire. Comair flies daily to Skukuza in the Kruger National Park in pressurised 44-seater, F27 aircraft, with full in-flight cabin service.

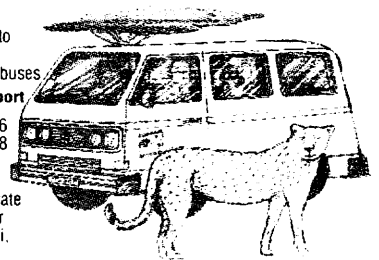
OUR FLY-IN-SAFARI PACKAGES INCLUDE:

- Fruit and wine in rooms on arrival
- Fully qualified licensed Safari leader to accompany you.
- Game drives in luxury 6 seater Microbuses

Daily departures from Jan Smuts Airport

Cost: CCC1 — 2 days 1 night — R556
CCC2 — 3 days 2 nights — R688
Price based on per person sharing

We also arrange packages to the private game reserves adjacent to the Kruger Park, Zululand, Margate and Manzini, Swaziland.



COMAIR
"Our Friendship Grows"

P.O. Box 7015, Bonaero Park, 1622
South Africa Tel: (011) 973-2911
Telex: 7-46738/7-41317
Fax: (011) 973-3913

Ceratotherium simum simum, die witrenoster wat in Suid-Afrika voorkom. • *Ceratotherium simum simum*, the white rhino that is found in South Africa.

5251.

Min oor van noordelike witrenoster

Dr. G. de Graaff



Die witrenoster, *Ceratotherium simum*, is vandag 'n rariteit buite ons landsgrense.

Daarom word *Ceratotherium simum cottoni*, die noordelike subspesie van hierdie renoster, vandag as een van die mees bedreigde soogdiere ter wêreld beskou.

Hy is die nefie van *Ceratotherium simum simum*, die witrenoster wat in Suid-Afrika voorkom.

In 1980 was daar gesamentlik slegs sowat 820 individue van *C. s. cottoni* in Soedan, Zaïre en die Sentraal-Afrikaanse Republiek oor. Uganda kon met slegs een van dié diere spog.

Vandag, nege jaar later, bestaan daar nog net een enkele natuurlike bevolking van 17 diere in die Garamba Nasionale Park in Zaïre.

Daar is darem nog 'n verdere 12 van dié renosters in diere-tuine buite Afrika. Tien daarvan is in die Dvur Kralone-dieretuin in Tsjeggo-Slowakye. Die oorblywende twee is alleenloperbulle wat in diere-tuine in onderskeidelik Londen en Khartoem voorkom.

Pogings word tans aangewend om die trop in Dvur Kralone te laat teel, maar dit gaan maar bedroef.

As gevolg hiervan is 'n bul en twee koeie na die diere-tuin van San Diego (VSA) oorgeplaas in 'n poging om hulle te laat teel.

Laasgenoemde instansie het reeds groot sukses behaal met die aanteel van die suidelike subspesie.

Die bul in Khartoem sal ook in die nabye toekoms met die hulp van die IUCN se Captive Breeding Specialist Group na San Diego geneem word.

Hoewel die noordelike en suidelike subspesies nie op die oog af van mekaar verskil nie, is hulle geografies van mekaar geskei en is daar aanduidings van verskille in hul DNS-samestelling.

Dié verdeling van hul oorspronklik gemeenskaplike genotipe het blykbaar oor die afgelope twee miljoen jaar plaasgevind.

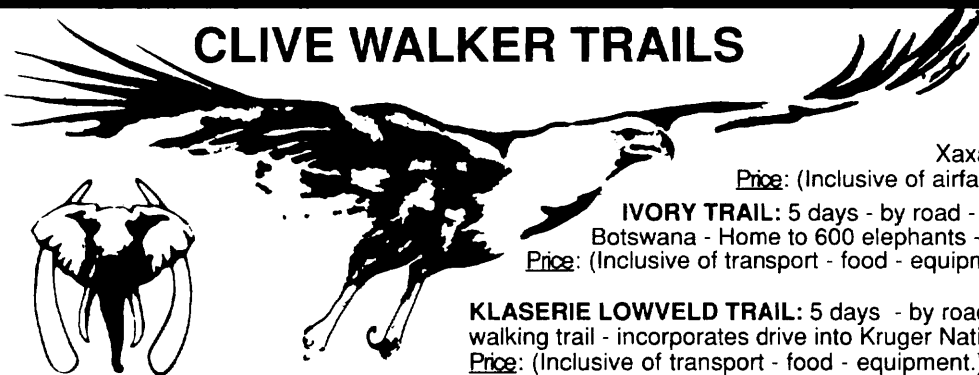
Die suidelike subspesie is gedurende die vorige eeu ook byna deur die mens van die aardbol verwyder en dit was slegs die doelgerigte natuurbewaringsaksies van die Natalse Parkeraad en later ook dié van die Nasionale Parkeraad wat hul voortbestaan verseker het.

Hierdie aksies het hul getalle in nasionale parke en reservate tot 3 500 laat styg. Daar is tans ook sowat 500 van dié diere in diere-tuine.

Die vraag is nou of *C. s. cottoni* werklik 'n toekoms het. Op papier lyk die antwoord na 'n moontlik eenparige "ja", maar wat van in die praktyk?

Dit sal net die tyd ons leer.

CLIVE WALKER TRAILS



FISH EAGLE TRAIL:

Seasonal-by air-
3 nights camping under the stars - exploring the Okavango by dugout - 1 to 3 nights Savuti/Xaxanaka under canvas - game viewing.

Price: (Inclusive of airfare - food - equipment)

IVORY TRAIL: 5 days - by road - Mashatu Game Reserve - Tuli Block Botswana - Home to 600 elephants - steeped in history. TENTED CAMP.

Price: (Inclusive of transport - food - equipment)

KLASERIE LOWVELD TRAIL: 5 days - by road - Eastern Transvaal - outstanding walking trail - incorporates drive into Kruger National Park. TENTED CAMP

Price: (Inclusive of transport - food - equipment.)

A CLIVE WALKER TRAIL IS LIKE INDELIBLE INK...ONCE EXPERIENCED NEVER ERASED

Under the auspices of Educational Wildlife Expeditions (Incorporated Association not for gain) (Reg. No: 76/00012/08)

P.O. Box 645, Bedfordview 2008. Tel: (011) 53-1814