



Care for the Wild Times

WINTER 2008



US LISTS POLAR BEARS AS THREATENED

Nanuk, a female polar bear, is part of a study into the population ecology of polar bears in relation to environmental change. Ongoing since the 1980s, this research in Canada's Western Hudson Bay provides one of the most complete long-term data sets for any Arctic species. CWI's support for this internationally important conservation research through its Polar Bear Adoption scheme puts us on the forefront of the fight for the polar bear's survival.

"In May 2006, the World Conservation Union (IUCN) listed the polar bear as Vulnerable in its Red List of Threatened Species," says Dr Nick Lunn, who heads the Canadian team of polar bear scientists. "In May this year, the US Fish and Wildlife Service listed the polar bear as Threatened throughout its range under the US Endangered Species Act (ESA). In both actions our research, which is supported by CWI, figured prominently in the decision process. Our work demonstrates a clear link between the earlier break-up of sea ice due to climate change and decline in

condition, survival of cubs, juveniles, and old bears, and the overall size of the population. Thanks to CWI and its donors!"

This is a massive step forward and shows just what your support for our adoption has achieved. The information submitted by Nick Lunn's team and others shows that two-thirds of polar bears - about 16,000 - could be gone by 2050. Summer sea ice has now shrunk to a record low of about 1.65 million square miles, nearly 40% less than the 20 year average. Most climate modellers predict a continued downward spiral, with an Arctic Ocean that may be ice-free during summer by 2030. Polar bears need sea ice to hunt. Less sea ice means more bears will starve or drown trying to reach their prey, as well as mating and denning areas. The fallout is brutal. Aerial surveys between 1987 and 2003 found only 12 of 315 bears in open water. A more recent survey spotted 51 bears swimming in open water, as well as four dead animals. The US Geological Survey's senior polar bear scientist, Steven Amstrup said, "We have some observations of bears swimming into shore when the sea ice was not visible on the horizon. In some of these cases, the bears arrive so spent that they literally don't move for a couple of days after hitting shore."

Polar bears are now the first mammal to be listed as threatened under the ESA as a result of global warming. The US will now ►



Barbara's Bit

Dear Care for the Wild supporter,

When I was a young biologist, the thought that animals experience emotions such as joy, fear, jealousy, anger and loneliness was considered a cardinal sin by many of my colleagues. Labelled as anthropomorphism, it was said to skew research results and make you a fool. At last the tables are beginning to turn.

Research into animal cognition, emotions, suffering, and mental states is gaining momentum all the time and with it grows our awareness about how animals experience the world. Scientists no longer question whether an animal's mental state affects its physical health - just as it does in humans. The thing is though, that 'awareness' about these issues is largely restricted to a select circle of experts. The public, decision makers and officials lag decades behind in appreciating the complexities of animal minds, and animals pay a heavy price for this knowledge gap. This is because where there are emotions, there is the potential for emotional abuse and suffering. Much of this of course is common sense, as anyone who has had a cat or a dog will attest.

A long time ago the Greek writer Aesop said that no act of kindness, however small, is ever wasted. Care for the Wild brings together likeminded people who are committed to changing the lot of neglected and ill-treated wild animals around the world. Our magazine once again highlights what we were able to achieve for them in the past four months - with your help. This issue covers two of our latest investigations. Following up on Tesco's in China, we uncovered that the supermarket still dismembers turtles and frogs alive. We also brought to light atrocious abuse and illegal tiger trafficking at one of Thailand's premier tourist destinations. Then there is news about our work for African elephants, endangered Indian rhinos, and a major step forward for the world's rarest dolphin. With everyone tightening their belts in the current economic climate, CWI is good value for money and - with your support - gets the job done. Thank you!

Warm regards,

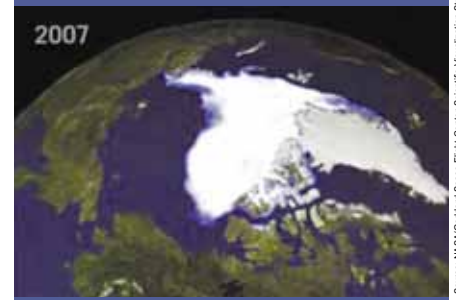
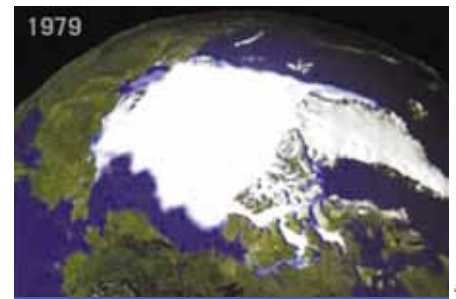
Dr Barbara Maas,
Chief Executive

have to protect some bear habitat, including areas females use as dens. It will also have to set up programmes to minimize the number of bears shot. But instead of protecting polar bear habitat from threats such as oil and gas development, the Bush administration simultaneously made it clear that it will not provide extra protection against these activities. The listing decision also includes a "special rule" to circumvent limitations on greenhouse gas emissions to protect polar bears, which is farcical. At the same time, Alaska's Governor Sarah Palin, now Republican running mate in the US presidential elections, filed a lawsuit against the US government to overturn the polar bear listing. Eighty-five percent of Alaska's economy is

reliant on oil and gas revenue and Governor Palin, whose husband works for BP, considers the ESA listing of polar bears "unwarranted".

US trophy hunters also strongly oppose the listing, as it blocks the import of polar bear trophies to the US. Within days, the world's largest trophy hunting body, the Safari Club International, sued the US government. Hunting polar bears is illegal in the US and elsewhere, except Canada, and hunters will pay up to US\$40,000.

Thank you from all of us for helping to get this far and please keep supporting us, so we can continue to fight for Nanuk, her cub and the rest of the world's polar bears.



Arctic sea ice cover 21st September 1979 (top) and 14th September 2007 (bottom)

Source: NASA/Goddard Space Flight Center, Scientific Visualization Studio



NANUK OF THE ARCTIC

Nick Lunn and his team first saw Nanuk in 1998 when she was eight months old. Since then they have seen her another eight times. On 13 September 2006 they spotted her and her young cub in the maternity denning area of Wapusk National Park. Since then Nick and his research colleagues have remotely followed her movements using a satellite collar. This is how they know that Nanuk and her cub ventured out onto the newly forming sea ice, where they stayed hunting seals until the sea ice break up forced them ashore in mid July. On 22 September 2007, Nick spotted Nanuk and her cub from the air. In the course of 375 days, she and her cub had travelled at least 2,316 km.

Nanuk is providing vital information on how polar bears use the sea ice, what areas are important, how far bears have to travel to return to land each summer, and the energy they need to do so. This information is crucial to make a case for the animals' protection.



Registered Charity
No. 288802



Printed on
recycled paper

Care for the Wild International
The Granary, Tickfold Farm,
Kingsfold, West Sussex RH12 3SE
Tel: (01306) 627900 Fax: (01306) 627901
E-mail: info@careforthewild.com
www.careforthewild.com

Dr Barbara Maas: Chief Executive Officer
Matthew Hall: Computer Administrator
Steve Hilling: Graphic Designer
Tarnya Knight: Administrative Assistant
Lucie Evans: Programme Officer
Claire Palmer: Programme Officer
Justine Pascoe: Programme Officer
Kaye Reeves: Computer Administrator
Kim Welton: Cashier
Contract IT support: Andy Reynolds

Overseas offices in Germany, India
Kenya and Thailand



© Petr Masak/Dreamstime.com

Rhino comeback in Nepal

Greater one-horned or Indian rhinos live mainly in northern India and Nepal. They differ from their African cousins not just by carrying a single horn, they also have the wrinkliest skin of all five rhino species, which is segmented into plates and gives them the appearance of prehistoric beasts in medieval armour. Hulking big creatures that they are, it's hard to believe that Indian rhinos are extremely good swimmers. Even more surprising is the fact that they can jump and move at 30 miles an hour during a charge.

Their dextrous upper lip acts like a hand to grab leaves, fruit and twigs, but can be folded away when eating grass. The eyesight of all rhinos is very poor, particularly when it comes to detecting stationary or slow moving objects. This weakness leaves them vulnerable to poachers. Nepal's Royal Chitwan National Park is home to the world's second largest population of these ancient beauties. But rhinos have had mixed fortunes here. In one of the most successful conservation efforts, numbers surged from less than 100 to over 600 animals between 1970 and 2000. But things changed, and many rhinos were killed by poachers during Maoist rebellion, which finally ended in 2006. Abandoned guard posts left the country's wildlife unprotected. Coupled with a lack of resources, this led to a huge killing spree, in which at least 104 rhinos lost their lives. Even babies were not spared in this brutal assault.

Rhino horn is still prized as an ingredient for traditional Asian medicines and as ornamental dagger handles in Yemen. CWI's latest research in this Arab state revealed that while Southern Yemenis have moved away from buying rhino horn

daggers, the government has done nothing to curb this lethal demand in the country's north.

Rhino horn prices have risen sharply in Yemen and China, where the horn is used in traditional medicines. This ups the ante and we have therefore stepped up our efforts to protect Chitwan's rhinos against poachers by monitoring the movements of both rhinos and poachers in park buffer zones, maintaining informer networks and creating awareness of the animals' plight amongst local communities. Just last week this work paid off again, when we were able to facilitate the arrest of traders with the skins of two endangered red pandas. Nepal is both a source country and an international transit point for illegal wildlife trafficking. Habitat degradation is pushing rhinos to leave the safety of the park, where criminal gangs run poaching and illegal trade rackets. Once an animal is killed, its parts are easily moved into China through obscure mountain trails. CWI's conservation partner in Nepal, Prasanna Yonzon, says "Our job is difficult, life threatening at times - I get anonymous phone calls at odd hours - but this comes with the territory. Somebody has to monitor this trade and we do it 24/7."

Thirty-one rhino poachers have been arrested in Chitwan since November 2007. They include the ringleaders responsible for the majority of rhino deaths. We are therefore thrilled to report that rhino numbers in Chitwan are once again on the rise, with an increase from 372 to 408 animals in the past three years. Improved counting techniques rather than population growth may be partially responsible - only time will tell. But one thing is for certain - the future of Chitwan's rhinos now looks a lot rosier.

THE INDIAN RHINOCEROS

DIET: Herbivore

LIFESPAN IN THE WILD: 40 years

SIZE: Length, 12.5 ft (3.8 m), shoulder height up to 6 ft (1.8 m)

WEIGHT: 4,400 lbs (2,000 kg)

CONSERVATION STATUS: Endangered

WORLD POPULATION: 2,000



© Alex Mowbray/Dreamstime.com



The horn of an Indian rhino, confiscated by CWI's team. Each gram is worth more than the equivalent in gold.

New Zealand's Fishing Industry is out for the Kill



Native only to New Zealand, Maui's and Hector's dolphins are the rarest dolphins on earth. Recent announcements to extend fishing no-go areas and improve controls are significant steps forward, but New Zealand's fishing industry wants to challenge these measures in court.

Gill netting and trawling have pushed Hector's and Maui's dolphins to the brink of extinction. Since the introduction of nylon filament nets in the 1970s, Hector's dolphin numbers have plummeted from 29,000 to less than 8,000. The species can not sustain more than ten deaths a year, but at least 110-150 animals die in commercial gillnets alone. The situation for Maui's, a subspecies of Hector's, is even worse. Ninety percent are already lost, and a mere 111 animals survive. Maui's dolphins will become extinct if more than one animal is killed every 5-7 years. But at least 12 animals have died over the past 7 years. Females reach breeding age at 7-9 years old and only have a single calf every 2-4 years, so recovery will be painfully slow.

Commercial fishing fleets strip-mine the oceans to the point where most fish stocks have become overexploited. In the mighty fishing lobby's ruthless, high-tech scramble for every last fish, Hector's and Maui's dolphins are simply an annoying obstacle, which they will fight to the death.

Last autumn, the New Zealand government announced a review of its Hector's and Maui's protection measures. Since then CWI has done everything possible to raise awareness about the dolphins' desperate situation amongst policy makers and the public. As part of this initiative we presented prime minister Helen Clark with a letter signed by 214 international environmental and animal protection groups from 71 countries, urging her to fully protect Hector's and Maui's

dolphins against fisheries bycatch. On 14th May we laid a wreath on the steps of the New Zealand parliament. It was decorated with 111 paper Maui's dolphins, one for each surviving individual. Local conservation groups, parliamentarians and members of the public joined us in this ceremony. Together we held up a gillnet with an entangled dolphin model as a reminder of their deadly impact.



CWI presents a wreath to the New Zealand Parliament on behalf of the last 111 Maui's dolphins

The world's largest professional bodies of marine mammal experts, the International Union for the IUCN's Cetacean Specialist Group and the Society of Marine Mammalogy (SMM) both called for the strongest possible measures to ensure the survival of these endangered dolphins. Together they represent more than 2,000

scientists from 60 countries, dedicated to the understanding and conservation of marine mammals. SMM President Dr John Reynolds told New Zealand that current measures are inadequate and that management action does not need to wait for further research. "The scientific evidence is very clear. The primary threat to both sub-species is bycatch in commercial and recreational gill net fisheries and trawl fisheries," Dr Reynolds said.

When the government finally announced new measures to better protect these species this summer, the fishing industry went into dramatic hyperbole. The new regulations range from the creation of new marine sanctuaries to controlling how, where and when nets can be set. Although they are already a compromise between what is needed and what the government is prepared to risk, the fishing industry launched an aggressive and ridiculous misinformation campaign, denying that dolphin populations are declining, that net entanglement is the main threat, and that the species is endangered. Claiming the new fishing restrictions will cost it more than NZ\$80,000, the fishing industry now wants to contest the new laws in court. Claiming the science is wrong, the rules won't work and everyone will go out of business is a typical industry bully response. Commercial interests clearly far outweigh scientific proof as far as the NZ Seafood Industry Council is concerned.

HARD TO SWALLOW

Tesco's Animal Abuse in China

A campaign update by Dr Barbara Maas



The world's leading veterinary, scientific and chelonian experts have joined CWI's campaign to stop selling live turtles and frogs for food in China. Now, CWI's latest investigation provides disturbing evidence that Tesco skins and dismembers animals alive.

Live turtles are mostly displayed tied up in plastic nets on top of thick layers of ice, which is painful for these sub-tropical species. Tesco only just decided to stop this practice, which is another step in the right direction. Tesco also agreed to remove hardshell turtles from sale because it is impossible to access the animals' head for decapitation without breaking the shell. Tesco also added crushing the skull to decapitation as a slaughter method to reduce time to death. But when CWI visited 32 Chinese Tesco stores this spring, we discovered that Tesco employees still kill turtles solely by decapitation or evisceration. We also found scores of disembowelled turtles with intact heads on display.

"Decapitation may sever the head from the body," says Annie Lancaster, Director of Tortoise Aid in the US, "but reptiles are capable of surviving prolonged periods of anoxia (absence of oxygen from the brain) for an HOUR (or more) after decapitation." Turtles killed this way experience awareness and severe pain. According to reptile experts Dr. Richard Gibson, decapitation "is only marginally better than the live disembowelment and butchery going on in the live food markets."

CWI witnessed Tesco staff starting to cut off a turtle's head. As the animal withdrew into its shell, staff cut it along the edge, but the turtle managed to break loose. Once re-caught, staff sliced the still living animal in half, separating the upper and lower part of its shell. In another

incident, Tesco staff opened up a turtle's abdomen from tail to neck with a pair of scissors. The turtle struggled, but Tesco staff added a transverse incision and pulled out its entrails. CWI also saw staff killing two bullfrogs by cutting off their heads with a cleaver. But although the decapitation of one frog was incomplete and the animal struggled, Tesco staff stripped off its skin. In response to these findings, Tesco says it is commencing a "programme of staff retraining".

But of course Tesco also can't control the behaviour of customers who wish to slaughter turtles at home. Common methods include live dismemberment, evisceration or boiling the animals alive. Tesco says it addresses this by developing "a public awareness campaign to help consumers understand animal welfare and to provide advice on the best treatment of live turtles and frogs where customers choose to take them home." CWI believes that the best treatment of live turtles and frogs is to leave them alone. Besides, China still has no animal welfare laws, and despite specific training, Tesco staff ignored even their employer's instructions with regard to slaughter. Clearly, this cannot be addressed by adding a leaflet into the shopping bag.

FUELLING EXTINCTION

Human consumption is driving turtles to extinction. Tesco argues its turtles are farmed, but turtle farming too is harmful. Moreover, according to its staff, Tesco also sources wild turtles. Dr. Shi Haitao from the Chinese Academy of Sciences explains that "In the long term, turtle farms serve no function beyond generating profit for a few entrepreneurs. Wild-caught turtles also fetch significantly higher prices, and no amount of captive breeding will decrease the desire for wild turtles." "The growth of turtle farms, the regional and international trade and now, the availability of these non-domesticated animals in large supermarket franchises, is having a catastrophic effect on the remaining fragile

wild populations of many species," adds reptile expert Dr Kevin Buley. "The cruellest aspect of turtle sales by companies such as Tesco is the extinction of populations and species worldwide," says Prof. Harvey Lillywhite.

WHERE THERE IS NO WILL, THERE IS NO WAY

CWI provided Tesco with research and expert opinions detailing the overwhelming welfare and conservation impact of its activities. Together with 27 leading experts, CWI also wrote to Tesco CEO Sir Terence Leahy, urging him to stop these sales, because they are cruel and devastate wild populations. CWI also raised the issue again at the company's 2008 Annual General Meeting.

Turtles butchered and sold alive by Tesco suffer profoundly. The 12 months have shown that Tesco has failed to enforce even the most rudimentary improvements to the welfare of the turtles it sells. But undeterred by science and its own policies, Tesco insists on maintaining an irresponsible and unreasonable position. No amount of denial, corporate spin and excuses will change that.

Thank you for your continued support with this important issue. Our campaign is gaining momentum and new supporters every day, and we hope that you will be with us for the long haul, because we can't solve this without you.

EVERY LITTLE HELPS!

Please keep your letters, e-mails and phone calls to Tesco coming, don't shop or take out financial services with Tesco and tell all your friends and family to do the same.

Sir Terence Leahy, CEO Tesco
Tesco House, PO Box 44,
Delamere Road, Cheshunt, Herts, EN8 9SL

Email: terry.leahy@tesco.com

Tel: (01992) 646790 or (0845) 6004411

They need your help!

Make a very personal connection with a wild animal in need, become part of its story and make a difference to its life with CWI's wildlife adoptions. There are 12 different animals to choose from, including bears, big cats, elephants and primates. Find out more about some of the extraordinary individuals in our care.

WARM TO A POLAR BEAR



PROTECT NANUK FOR £24.95

YOUR ADOPTION INCLUDES:

12 month adoption of Nanuk, a cuddly polar bear toy, a personalised certificate with a picture of Nanuk, information about polar bears and CWI's work, a window sticker and animal updates twice a year.

Nanuk is a ten year old polar bear mother and has managed to keep her cub alive for a second winter. Scientists have been following Nanuk on her Arctic journey since she herself was a cub.*

NANUK LIKES:

Seals for dinner, short summers, lots of sea ice, cuddling her cub.

NANUK DISLIKES:

Hunters, polar bear jail, aggressive males, global warming.

HOW YOUR ADOPTION WILL HELP:

Nanuk is providing vital information on how polar bears use the sea ice and how the species is struggling to cope with a warming Arctic. This information is vital to secure policies for the bears' protection.

*Please note that once Nanuk's satellite collar has been removed, we will feature a new bear as part of our adoption.

ROOT FOR THESE BADGERS



CARE FOR TESS & BEAR
FOR £24.95

YOUR ADOPTION INCLUDES:

12 month adoption, a brilliant DVD about badgers in the wild which includes footage from Secret World, a personalised certificate with a picture of Tess & Bear, information about badgers and CWI's work, a window sticker and animal updates twice a year.

Tess & Bear are British badgers who both had unlucky starts in life. Tess has a liver shunt meaning unfiltered blood enters her heart leaving her weak, whereas Bear was hit by a car in Cumbria. At the sanctuary where they now live they receive the very best veterinary and daily care.

TESS & BEAR LIKE:

Peanut butter sandwiches and worms, apples, grapes, a good scratch, Aunty Pauline from the sanctuary.

TESS & BEAR DISLIKE:

Bad science that blames them for the TB in cattle, Sir David King, running out of peanuts.

HOW YOUR ADOPTION WILL HELP:

Tess and Bear can't fend for themselves in the wild and so need to be looked after and fed for the rest of their lives. Secret World Wildlife Rescue in Somerset is the ideal place for the job. It also returns more rescued badgers to the wild than anybody else. A staggering 40 badgers last year alone - thanks to CWI adoptions.

HANG OUT WITH AN ORANGI-UTAN

Violet, a young orang-utan orphan, had been chained to a filthy chicken coop in a village in Indonesian Borneo. She was weak, severely ill, motherless and close to death when she was rescued and will depend on human care until she is old enough to return to the forest.

VIOLET LIKES:

Mangoes, scaling trees, big hugs, more mangoes.

VIOLET DISLIKES:

Bananas, palm oil plantations, not being the centre of attention.

HOW YOUR ADOPTION WILL HELP:

Violet is cared for at the Orangutan Foundation's rescue centre, which looks after her, teaches her everything she needs to know about being a wild orang-utan again, and will eventually return her to the forest where she belongs. Wild orangutans are acutely endangered and each individual that returns to the wild is a triumph.



LOOK AFTER VIOLET
FOR £24.95

YOUR ADOPTION INCLUDES:

12 month adoption of Violet, a cuddly orang-utan toy, a personalised certificate with a picture of Violet, information about orang-utans and CWI's work, a window sticker and animal updates twice a year.

LET THIS TIGER MELT YOUR HEART

Meow was orphaned as a cub and ended up in chains at a petrol station in Bangkok as the owner's mascot. Neglected, poorly treated and forced to live in the most unsuitable environment between bustling cars, Meow was close to death by the time he was rescued.

MEOW LIKES:

Edwin, who rescued him, a cool bath, playing with his toys, being fed by hand.

MEOW DISLIKES:

Cars, shouting, chains.

HOW YOUR ADOPTION WILL HELP:

Because Meow wasn't fed properly as a cub, his hind legs are weak. He can therefore never return to the wild. Still a young tiger, he depends on humans to care for him for the rest of his life. Your adoption will pay for his food and any medicine he may need.



ADOPT MEOW FOR £24.95

YOUR ADOPTION INCLUDES:

12 month adoption of Meow, a cuddly tiger toy, a personalised certificate with a picture of Meow, information about tigers and CWI's work, a window sticker and animal updates twice a year.

ANIMAL ADOPTION FORM

Yes, I would like to adopt:

- NANUK
 TESS & BEAR
 VIOLET
 MEOW

Please deliver the gift pack to:

The foster parent The person making payment

Please complete and return this coupon to:

Care for the Wild International, The Granary,
 Tickfold Farm, Kingsfold, West Sussex RH12 3SE

Name and address of person making payment

(If for a child please tick here)

Mr/Mrs/Miss/Ms _____

Postcode _____

Name and address of foster parent

(Block capitals please)

Mr/Mrs/Miss/Ms _____

Postcode _____

I enclose a cheque/p.o. (Payable to 'Care for the Wild International') or debit my credit card

Card No. _____ / _____ / _____ Expiry date _____

Issue no. _____ Security code _____ Cardholders signature _____ TOTAL £ _____

GIFT AID: I am a UK tax payer and would like to Gift Aid all donations made to CWI over the last six years and all donations in the future until I notify you otherwise. To qualify for Gift Aid, what you pay in income tax or capital gains tax must at least equal the amount the charity will claim in the tax year.

Illegal Trade & Cruelty at the Tiger Temple



The tiger is the world's biggest cat and one of the most powerful predators on earth. Tigers capture the imagination and few would pass up the opportunity to get up close and personal with these stunningly beautiful cats. CWI's latest investigation reveals the ugly side of our fascination with tigers at one of Thailand's premier tourist destinations.

The Tiger Temple in Kanchanaburi has cashed in on the allure of tigers for years. Some 300 tourists visit the facility each day. Boosted by the worldwide broadcast of two documentaries on Animal Planet, numbers reach almost 900 on busy days. But the up close and personal experience the Temple offers turns out to be a great deal too close for comfort. Following a two year investigation, CWI published a damning report that revealed disturbing evidence of animal abuse and illegal tiger trafficking.

A CRUEL SHOW

Approximately 15 tigers live at the Temple at any one time. Poor housing, husbandry and cruel handling are systemic throughout the facility. Far from being allowed to roam free, tigers are confined for 20 hours a day away from public view in small, barren concrete cages that fall well short of minimum requirements. Staff routinely beat adults and cubs with poles and rods. As a result, the tigers suffer a catalogue of behavioural and physical problems, including lameness, skeletal deformities and stereotypic behaviour, such as pacing and self-mutilation. These complaints are further exacerbated by malnutrition and poor veterinary care.

Interacting closely with tigers is the chief attraction that draws the crowds. Each day between 1pm and 4pm about ten tigers are chained up in the Temple's 'Tiger Canyon', where paying visitors, including young children, can touch, sit or lie on the animals' front or back. For a further fee staff will take a photograph. The tigers are propped up with large concrete bowls to oblige them to adopt and maintain appealing poses. Tigers are also brutally yanked into position by their tail and sometimes punched, kicked or beaten to make them compliant. Temple staff tower over the animals to control them and even squirt urine into the tigers' faces. In the wild, tigers use urine as a territorial and aggressive signal. At close quarters this is extremely intimidating.

ILLEGAL TRADE

Our second concern relates to illegal breeding at the Temple, which claims to breed tigers for conservation. Although it doesn't have a license, at least ten cubs have been born there. With no information about the tigers' subspecies, most if not all offspring are likely to be hybrids. For this reason alone the Temple's tigers are unsuitable for inclusion in recognised conservation breeding programmes. Circumstances in which the release of captive-bred tigers to the wild can contribute to tiger conservation are virtually non-existent. Moreover, the release of tigers that are used to humans is dangerous and potentially fatal for the tigers, humans and livestock.

The Temple claims to have rescued its initial tigers, but a Thai wildlife trader told CWI that he sold them to the Temple. CWI also obtained evidence that the Temple is involved in the clandestine exchange of tigers with a tiger farm in Laos. It is mostly

older animals that were sent to Laos in exchange for young cubs and no one knows what happens to them there. Some of the new arrivals are given the same names as tigers that had been exported to obscure the fact that tigers are being moved and to create the impression that the Temple provides life-long care. These actions contravene both local and international laws under CITES (Convention on International Trade in Endangered Species).

CWI's report also raises grave concerns about visitor safety. Cases of fatal attacks on humans by 'trained' and apparently mild-mannered captive wild cats abound. The Temple explicitly renounces any responsibility for injuries and asks visitors to sign a disclaimer at the entrance. However, Temple staff fail to prevent contact even when the tigers are aggressive. When asked why tourists don't get bitten, the Abbot replied: "They want to bite. One day they will bite." His prediction came true in September and he is currently in hospital.

RESULTS SO FAR

CWI has appealed to Thailand's Department of National Parks to confiscate the tigers and transfer them to a sanctuary, where they can be cared for appropriately. We have identified a suitable facility in Thailand and are offering our full support.

In response to our report, Animal Planet immediately withdrew both of its programmes on the Temple from its networks. "We oppose such horrific action against animals, especially any endangered species," says the Managing Director of Animal Planet Europe, Philip Luff, "and wish to ensure that our viewers are not misled into believing the temple remains a haven for the tigers." CWI is also contacting travel companies who send clients to the Tiger Temple. Many have already taken the Temple off their books. With Thai authorities dragging their heels, this should go a long way towards drying up the tide of visitors to the Temple.

We do not need more captive tigers, but more tigers in the wild. Tigers can be saved most effectively by protecting their habitat and prey through uncompromising law enforcement and by eradicating demand for their capture and body parts. Tigers will not survive another decade of losses like the last. With so few of these animals left, we must act decisively to eliminate all threats to wild tigers. This includes bringing an end to tiger trade.



To read the full report or factsheet please visit: www.careforthewild.com, contact claire@careforthewild.com or 01306 627912



Children are actively encouraged to sit and lie on the tigers during photo sessions



Tiger Temple staff posing for a photograph



Two Tiger Temple staff manhandle a tiger, pulling the animal by its tail



IN MEMORY OF A GREAT TIGER

Phet, our beautiful, beloved tigress has passed away.

Less than a week old, Phet had already been bought and re-sold four times by illegal wildlife traders in Laos. Weak, sick, malnourished, dehydrated and orphaned, Phet survived against the odds thanks to the dedicated rescue team, which cared for her around the clock. That was eight years ago.

CWI built Phet a new home where she could grow up safely. Thanks to Phet's foster parents, who cherished her with us from afar, Phet grew into a magnificent tigress, who charmed everyone with her playful, friendly nature. Phet also developed a deep bond with her keeper, Somthone. The two were inseparable, with Phet often playing hide and seek or running around her enclosure's perimeter chasing him. She remained friendly throughout her life and has never been aggressive to anyone, despite the horrific treatment she had suffered as a cub.

This summer, tragedy struck Phet's life a second time. She fell ill and despite the best treatment and consultations with international wildlife veterinarians and tiger experts her condition failed to improve. Phet finally lost her battle for life on 20th May.

Somthone was an ever present source of comfort to Phet throughout her illness, right until the moment she passed away. Guna Subramaniam, CWI's South East Asian Director says, "Phet was a truly remarkable animal, and her story will live on with the hearts of the many people whose lives she touched."

Looking after Phet was a great privilege, but Phet was also a symbol of our ongoing fight against the cruelty and injustice of illegal wildlife trade. Thanks to her foster parents, this tiny, helpless cub - no larger than a cat - found sanctuary in every sense of the word. We miss her.

CITES Sells Out on Elephants

African elephants are once again caught in the crossfire of greed and political expediency. Ever since the CITES (Convention on International Trade in Endangered Species) ban on international ivory trade came into effect in 1989, it has been under constant attack. Southern African countries who wished to cash in, and the two main ivory consuming nations China and Japan, were stubbornly opposed to the ban even though more than half of Africa's 1.3 million elephants were slaughtered in a single decade in the hunt for 'white gold'. Today there are less than 470,000.

With more than 100 tonnes of stockpiled ivory up for grabs, China's bid to become an official trading partner for 'controlled' ivory trade was narrowly defeated at last year's CITES meeting. Evidence of Chinese involvement in illegal ivory trafficking abounds; much of it collated by Care for the Wild. It is therefore all the more inexplicable that CITES overturned this decision in an intercessional meeting this July. The UK was one of the nine countries which supported China.

Just three countries (Kenya, Ghana and Australia) were opposed. Bizarrely, a growing number of seizures was construed as a sign of effective enforcement, a line of reasoning unthinkable in relation to drug trafficking. This is a heavy blow for elephants who are once again slaughtered at a pace unseen since the 1989 ban. We now fear an even bigger wave of killings. CWI went undercover again to expose the United States as one of the world's leading ivory markets, fuelled by illegal Chinese imports. This summer, we uncovered a rising demand for ivory in Ethiopia through Chinese workers, which puts pressure on the country's few surviving elephants and led to an influx of smuggled tusks from neighbouring countries such as Kenya. Sudanese militias and rebel groups in Congo have also begun to use ivory as a source of income. The slaughter of elephants is now also funding the slaughter of humans. Africa's elephants are once again under attack and in dire need of our protection.



THANK YOU FUNDRAISERS!

We would like to say a huge thank you to our amazing marathon runners who took to the streets of London on a wet April day and raised an incredible £15,800 - this is the second year that our running stars have managed to raise over £15,000. Our deepest thanks go to Julia Bertram, Rachel Martin, Alistair Francis, Philip Bland, Roisin Wood, Bernard Pretorius, Sam Grazebrook, Caroline Wong, Jo Snoxell, David Elsom, Sarah Buddle and Robert Pearce - we are so grateful for your hard work and dedication in running the 26.2 miles on what was a horrible wet April day!

CAKE CRAZY!



A huge thank you from us all goes to Hannah Wainwright who raised a whopping £110 by organising a cake stall at her school. Hannah's money will go to help our newest Tiger orphan Meow. We would like to also thank all the staff and pupils at Hannah's school for taking part and buying Hannah's cakes!

If you feel inspired by Hannah's efforts why not have a go yourself? See the back pages of this edition of CWI Times for more fundraising ideas!

THE LONDON MARATHON 2009

Are you looking to run the London Marathon for a good cause in 2009? Are you worried you may have missed the registration deadline? Well don't despair because we have several 'Golden Bond' places so that you can run the 26 miles in aid of CWI!

If you have been lucky enough to secure a place through the ballot then why not raise funds for the animals while running the 26 miles? We will provide you with all the support you need to raise funds so that we can beat this year's incredible total! If you are interested in raising funds for us, want to know more about our Golden Bond places or simply want to support our 2009 runners please contact Ewen on 01306 627900 or email ewen@careforthewild.com.

NEW - BUPA 10,000

Do you fancy running to help the animals but think that 26 miles is a bit too far? Would you like to run in the footsteps of Olympians? Well now you can because we have managed to secure 15 places for the new BUPA 10k run. The event takes place in London in May 2009 and is run over the course that will be used in the 2012 London Olympics. If you would like more information please contact Ewen on 01306 627900 or email ewen@careforthewild.com.

CHALLENGE EVENT CHAMPION

We would like to say a massive thank you to Jim Lee, our very first Challenge Event Champion. This year Jim trekked to the base camp of Mount Everest and raised over £1,900 for CWI. Jim told us that during his trip he had to overcome "all the varied Himalayan weather conditions, from heavy rain and strong winds to snow storms...the weather had its final say in Katmandu when we were treated to an incredible electrical storm!". Jim, we all salute your tenacity and dedication to helping animals in need! If you are interested in taking part in a challenge event like Jim, please contact Ewen.

COLLECTING TO SAVE THE ANIMALS

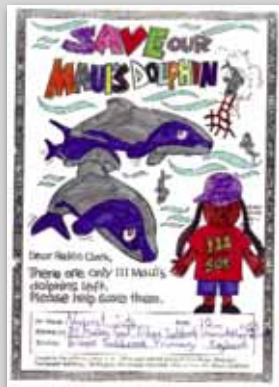
We have a number of people who have raised funds for the animals in the past year using our Care for the Wild collection boxes. Unfortunately we can't thank everyone but we would like to mention Brenda Heppell, Alfred Morley, David Canell, Gail Woolfenden and Jane Peed who have all put in a lot of time and effort to carry out street fundraising or collections at their place of work - your efforts not only help us to raise much needed funds, they also help promote CWI's name and cause to a wider audience.

If you are interested in raising funds using one of our collection boxes, please contact Ewen on 01306 627900 or email ewen@careforthewild.com.

COLOURING TO SAVE THE MAUI'S

Navpreet Juty felt so concerned about the plight of Maui's Dolphins in New Zealand that she decided to do something special to help them. Navpreet organised a colouring competition at school and raised £30 to help the dolphins

- a fantastic effort! We would like to thank Navpreet, her family and all the staff and children at Bishops Tachbrook C.E. Primary School for caring so much about these highly endangered animals.



CONGRATULATIONS RAFFLE WINNERS

Thanks to everyone who bought and sold tickets for CWI's Thai Wildlife Rescue raffle, the proceeds of which will help us to keep our mobile veterinary clinic going in Thailand. Congratulations to the winner of the top prize of £2,000, Miss M Shorey from Stratford Upon Avon. Details of all of the other prize winners are listed on our website.

Our Christmas raffle will be coming out very soon, please sell those tickets and help give the animals a happier Christmas and hope in the New Year. And don't forget by buying tickets you are not only helping animals but you could also win a superb first prize of £2,000 or a second prize of £500.

We would like to send our heartfelt thanks to all those individuals, companies, schools and colleges who have helped us financially or donated their time, enthusiasm, passion and expertise for us to succeed in our vital work. Without you we couldn't do it! To fit all of you in would fill this magazine, but here is a selection:

Everyone at CWI would like to thank the Dalai Lama and his Offices; Tsering Dorje; Tsering Yankey; Ashok Wangdy; Tanzania National Parks.; Paul Hodgson-Hutton; Adrian Hilliard at Hunkydory Productions; Jo Hastie; Ashok Kumar; Anna Nekaris; Ulrike Steicher; Esmond Martin; Daniel Stiles; Peter Jeffrey; Steve Dawson; Justin Hando; Rudi van Aarde; Pasang Lhamu Bhutia; Gail McGuffie; Prasanna Yonzon; Gregory Rasmussen; Catharine Muir; Padmini Rathore; Pei-Feng Su; Betsy Dribben; Sandy Greener; Julie Rhodes; David Courtenay; Louise Murray; Kioko Mwitiki; Brian Styles; Nick Marx; Nick Tregenza; Lesley Pyke; Christine Wolf; Chris Wold, Pro Wildlife, Folly Wildlife Rescue; Arthur's Lodge Vets; Trevor and Sandra at the Fox Project; Liz, Toby and Jane at Animaline; Ian McFarlane; Saskia Heath and TC Communications; Colourwise Ltd; KAT UK; Fastsigns Ltd; The Printed Word; Arun Stationers; Tuskers Collectors Club; Sovereign Flying Florist; Thom Merkus of Gallagher Security; Solus Marketing, The Tortoise Trust, Jim Lee, Mary Rice; Judy Mills, James Parham; Peter Paul van Dike; Paul Davis, Kevin Buley; Angelo Lambiris, the Inside Living team; Andrew Rowan; Liz Slooten; Steve Dawson; Mike Donaghue; Kevin Lockwell; Russel Crowther; Martin Loibooki; Michael Vikes; John Wedderburn; Chris Morris and Wayte Bros Ltd; Victor Savitsky of Russian Input -Engineering Documentation Solutions.

We would also like to thank all our overseas representatives and adoption project partners: Daphne Sheldrick and The David Sheldrick Wildlife Trust; Kevin Robinson and the CRRU; Nick Lunn and Ian Stirling of Environment Canada; Secret World Wildlife Rescue; The Orangutan Foundation; Sweetwater Chimpanzee Rescue Centre; Phnom Tamao Rescue Centre; NABU; Grappa Bars, the Cambodian WPO; CRCWA; ARCTUROS. Finally, the whole CWI team, on behalf of the thousands of animals we have helped again this year, would like to say THANK YOU to all our supporters and animal foster parents. If it wasn't for you, there would be no Care for the Wild and none of this work would have been done!

Care for the Wild International GET INVOLVED!

Care for the Wild International depends entirely on donations from our supporters. There are many ways that we can help you to raise funds for our wildlife work, but you can also let your creativity run wild! You may be surprised at how effective even simple ideas can be. No matter how old you are, you can encourage other people to support wild animals in trouble by offering something in return. The opportunities are endless, and you can have fun at the same time! Here are just some examples to inspire your imagination....

IDEAS WE CAN HELP YOU WITH...



CHALLENGE EVENTS

You can help animals whilst having the time of your life!

Why not join fundraisers like Jim Lee (shown in picture) and take part in a challenge event. Jim took a 10 day

trip to Everest and raised almost £2000 for the animals! In addition to making the world's highest mountain the high point of your year you can also choose from a range of amazing adventures including an amazing hike up Kilimanjaro.

Check out our other events and raise funds whilst having a fantastic experience that you will never forget.

STREET COLLECTIONS & COLLECTION BOXES

Get your local shop or your place of work to display a CWI collection box. Contact us and we will send you as many as you need. If you are really dedicated and are prepared to spend an afternoon collecting on the streets, we will arrange your permits and provide you with everything you need!



SPONSORED EVENTS

Run the London Marathon, the Great North Run or simply run around the block and raise funds for animals! This year, 12 dedicated animal lovers ran the 26 miles for CWI on April 13th! If running is not your thing you could organise a bike, swim, or aerobics event.

STOP PRESS - We have 15 places for the 2009 BUPA London 10,000 which takes the course that the Olympians will run in 2012! For more information contact Ewen.

PAYROLL GIVING

Did you know that you and your colleagues can donate through your monthly paycheck? You control how much you would like to give each month, and best of all payroll giving donations are deducted before tax. Therefore each £1 you give will only cost you 78p! If you are a higher rate tax payer it will cost you just 60p!

IDEAS FOR THOSE CREATIVE THINKING FUNDRAISERS...

GET SELLING

Rid yourself of that unwanted clutter or sell on your own handiwork in a car boot or garage sale. Hire yourself and your friends out as helpers for a day in your very own slave auction.

GET CELEBRATING

Celebrate with your friends and family and help animals at the same time. Host a wildlife coffee morning, wine tasting evening, dinner, themed or fancy dress party and charge everyone an entrance fee.

GET ARTY OR GREEN FINGERED

Produce a wild work of art or a photograph to sell to your friends or family!

Host an open house painting exhibition with local artists and charge for entry and refreshments. If music is more your thing, host a music or singing recital and charge a small fee from your audience. Open your garden to visitors for an afternoon and charge a small entrance fee. You could even offer tea and biscuits!

GET SPORTY

Ask your local sports club to hold a charity match for paying spectators. You could also get work colleagues from different departments to 'take it outside' in a football, rugby, golf or tennis match.



Best of luck and don't forget to let us know how you get on and send us a picture! If you are worried about whether you need any permits or would like more fundraising ideas, please contact Ewen on 01306 627900 or e-mail ewen@careforthewild.com

Please send me details about: Challenge Events

Please contact me about: Street Collections and collection boxes
 Other fundraising ideas

I would like to make a donation to help CWI's work:

I enclose a cheque (Payable to **Care for the Wild International**) or debit my credit card

Visa/Amex/MCard/Maestro No. _____ / _____ / _____ Exp. Date _____

Issue no. _____ Security code* _____ Signature _____ Total £ _____

* Last 3 digits by signature on back of card

GIFT AID: I am a UK tax payer and would like to Gift Aid all donations made to CWI over the last six years and all donations in the future until I notify you otherwise. To qualify for Gift Aid, what you pay in income tax or capital gains tax must at least equal the amount the charity will claim in the tax year.

(BLOCK CAPITALS PLEASE)

Mr/Mrs/Miss/Ms _____

Postcode _____

Please return this coupon to:
Care for the Wild International,
The Granary, Tickfold Farm,
Kingsfold, West Sussex, RH12 3SE

