

## FOSSIL MAMMALS FROM THE NEOGENE STRATA IN THE SINDA BASIN, EASTERN ZAIRE

Kinya YASUI  
*Department of Anatomy I, Dokkyo University School of Medicine*  
Yutaka KUNIMATSU  
*Laboratory of Physical Anthropology, Kyoto University*  
Naoyuki KUGA  
*Laboratory of Paleontology, Kyoto University*  
Baluku BAJOPE  
*Department of Biology, Centre de Recherche en Sciences Naturelles*  
Hidemi ISHIDA  
*Laboratory of Physical Anthropology, Kyoto University*

**ABSTRACT** Since 1989, a geological and paleontological expedition has been carried out in the Zairean part of the Western Rift Valley. During two field seasons, more than 600 fossil remains were collected in the Sinda basin, Gaty, Haut-Zaire, mainly as surface finds. This fossil collection contains 52 mammalian fossils which comprise the following taxa; ?*Agriotherium*, four proboscidean groups such as *Prodeinotherium*, ?*Anancus*, *Mammuthus subplanifrons* and *Stegodon kaisensis*, two Rhinocerotidae, i.e., ?*Aceratherium* and *Brachypotherium*, ?*Sivatherium*, *Hippopotamus*, and a bovid. The Sinda fauna is composed of both Miocene and Pliocene mammals and suggest that the strata including the fossils are of late Miocene to early Pliocene in age. This fauna resembles that from the Nkondo formation which is located in the Ugandan side of the Western Rift Valley. The composition of the fauna from the Sinda area may indicate a different paleoenvironment (probably more humid) in this area from that in contemporary East Africa.

**RESUME** Depuis 1989, une expédition géologique et paléontologique est réalisée dans la partie zaïroise de la branche occidentale du Rift. Durant deux saisons, plus de 600 restes fossiles ont été collectés dans le bassin de Sinda, Gaty, haut-zaïre, principalement comme découvertes de surface. Cette collection fossile contient 52 mammifères fossiles qui comprennent les taxa suivant; ?*Agriotherium*, quatre groupes proboscidean tels que *Prodeinotherium*, ?*Anancus*, *Mammuthus subplanifrons* et *Stegodon kaisensis*, deux Rhinocerotidae par exemple, ?*Aceratherium* et *Brachypotherium*, ?*Sivatherium*, *Hippopotamus*, et un bovidé. La faune de Sinda est composée des mammifères du miocène et du pliocène et suggère que le strate inclus les fossiles sont de l'âge du miocène supérieur au début pliocène. Cette faune ressemble celle de Nkondo formation qui est située dans la partie ougandaise du Rift Occidental. La composition de la faune de l'aire de Sinda devra indiqué un paléoenvironnement différent (probablement plus humide) dans cette aire de celui en l'est-aficain contemporain.

**Key Words:** Fossil mammals; Neogene; Western Rift Valley; Paleoenvironment; Eastern Zaire.

## INTRODUCTION

Paleontological studies of the Western Rift Valley have been overshadowed by the dramatic discoveries of hominid and hominoid fossils from the Eastern Rift. However, the Western Rift is an ideal region for studying human evolution, assuming that the Mio-Pliocene hominoids evolved under the influence of the prosperity of the forest where they lived.

Historically, several fossil deposits have been known on both escarpments of the Western Rift. In the Ugandan part, the first report of fossils from the eastern coast of Lake Mobutu (= L. Albert) was made by Hopwood (1926), which followed the studies of Hopwood (1939) and Cooke and Coryndon (1970). Recently, Pickford et al. (1988, 1989, 1990) have reinvestigated this area. According to them, the problems of the localities and biostratigraphic context in the old works have been resolved. The "Kaiso formation", which was originally considered to be of Plio-Pleistocene age, seems to contain upper Miocene sediments (Pickford et al., 1988). It is also suggested that the mammalian fauna from the "Kaiso formation" include animals that preferred a humid environment.

In the Zairean part, on the other hand, Fuchs (1934) identified the fossil beds along the northern shore of Lake Rutanzige (= L. Edward) for the first time. Thereafter, Lepersonne (1949) and Hopwood and Lepersonne (1953) found several outcrops of Miocene fossil beds along the upper reach of the Semliki River. Hooijer (1963) described the Miocene fossil mammals collected so far from the former Belgian Congo, mostly from the Western Rift. Since 1982, Boaz and his colleagues have made an expedition to the basin of the Semliki River (Boaz, 1990). They successfully obtained many specimens in the upper Semliki region. Based on many fossil woods, they pointed out the existence of a dense forest in the upper Pliocene. The Zairean Plio-Pleistocene fossil beds have been previously regarded as the "Kaiso formation". However, de Heinzelin and Verniers (1987) renamed them the Lusso Beds because of the paucity of positive evidence indicating the similarity between the Ugandan and Zairean Plio-Pleistocene sediments.

Despite the recent investigations on the Plio-Pleistocene, Miocene sediments in Zaire have never been reinvestigated since Hooijer's study (1963). In 1982 and 1985, Boaz's team searched for fossil bed outcrops in the Sinda-Mohari area but failed to establish a site (Boaz, 1990).

We made two field surveys in the Sinda-Mohari area, Haut-Zaire during 1989 to 1990 and found many fossiliferous localities. This area was surveyed by Lepersonne in 1949 and by de Heinzelin in 1954, '57, and '60, and the collected fossil mammals were studied by Hooijer (1963). He considered the mammalian fauna from the Sinda-Mohari area as lower Miocene in age.

The majority of the fossil remains in our expedition were collected as surface finds. Most of them were fishes and aquatic reptiles. Mammalian remains were quite small in number (52 of 579 registered fossils). Since most of the fossils were fragmentary, identifiable specimens were restricted to a small portion of the collection. In the present report we describe the mammalian specimens from the Sinda basin and discuss the geological age of this fauna and the paleoenvironment in this area.

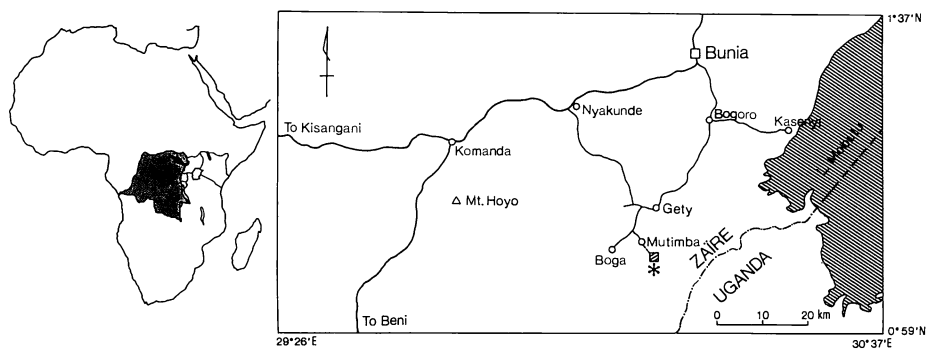


Fig. 1. Location of the surveyed area (hatched square).

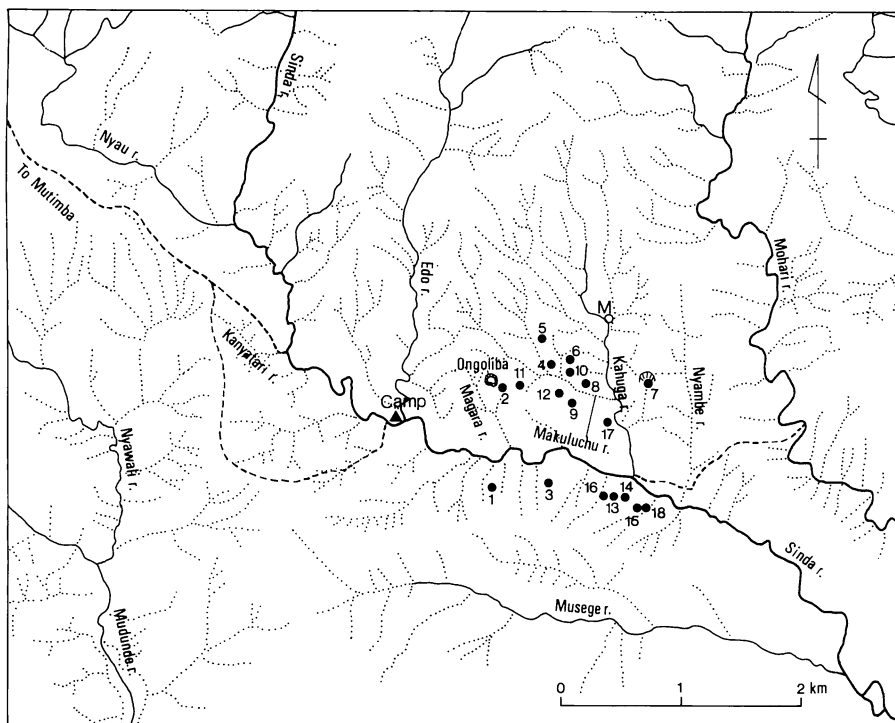


Fig. 2. Map of fossiliferous localities in the Sinda area. "M" denotes the molluscan site.

**Table 1.** Distribution of the fossil mammals from the Sinda area.

site taxon	1	2	3	4	5	7	8	9	10	11	12	13	14	15	17	18
<i>?Agriotherium</i> sp.																×
<i>Prodeinotherium</i> sp.													×	×		
<i>Anancus</i> sp.												×		×		
<i>Mammuthus subplanifrons</i>													×			
<i>Stegodon kaisensis</i>													×			
unidentified Proboscidea			×			×					×		×	×		
<i>?Aceratherium</i> sp.											×					
<i>Brachyotherium</i> sp.			×													
unidentified Rhinocerotidae	×												×			
<i>Hippopotamus</i> cf. <i>imagunculus</i>	×															
<i>?Sivatherium</i> sp.											×					
Bovidae							×									
unidentified mammals	×			×	×			×		×	×		×	×		×

## LOCALITIES

Surveys were carried out in the basins of the Sinda and Mohari Rivers which are located on the western escarpment of the Western Rift Valley, ca. 70 km south-south-east of Bunia, Haut-Zaire (Fig. 1). Eighteen vertebrate fossiliferous sites were established on both banks of the Sinda River (Fig. 2), while no exposed fossil beds were found in the basin of the Mohari River. These localities almost correspond to those of de Heinzelin (Hooijer, 1963). The fossil compositions of mammals at each locality are shown in Table 1. The fossil remains seemed to occur in the upper, middle, and the upper part of the lower members of the Sinda Beds (Makinouchi et al., this volume).

## SYSTEMATICS

**Class** Mammalia  
**Order** Carnivora  
**Family** Ursidae Gray, 1825  
**Genus** *?Agriotherium* Hendey, 1972

Material: SN-228

Locality and horizon: site-15, upper member of the Sinda Beds

**Description.** This tooth fragment has been identified as a carnivora upper molar (Plate 4, Fig. 17). This is not worn but has been eroded, so that the detailed characteristics of the crown are not observable. The enamel thickness on the occlusal surface is 0.6 mm. Despite the insufficient diagnostic characters, we tentatively allocate it to *Agriotherium* by comparison with the materials of the National Museum of Natural History, Paris.

**Order** Proboscidea  
**Family** Deinotheriidae Bonaparte, 1845  
**Genus** *Prodeinotherium* Ehik, 1930  
*Prodeinotherium* sp.

Materials: SN-273, 500

Localities and horizon: site-14, 15, upper member of the Sinda Beds

**Description.** An isolated right upper third premolar (SN-500) (Plate 1, Fig. 3a,b) and a right lower second molar fragment (SN-273) (Plate 1, Fig. 4a,b) are identified as this taxon. In the occlusal aspect of the former, paracone and metacone are continuous with each other, while protocone and hypocone are delimited by a deep and sharp sulcus. The buccal two cusps and protocone have been worn, exposing the dentine core. Enamel thickness measured on the worn surface is ca. 3 mm. From the paracone, a well-developed parastyle runs mesiolingually, coming into contact with the cingulum of the mesiolingual margin of the tooth which reaches the distal margin of the protocone. Likewise, a well-developed short metastyle from the metacone runs distally and connects with the weak cingulum of the distal margin. Mesostyle is not present. The mesial surface of the tooth is somewhat angulated, while the distal surface is rather flattened. Mesiodistal and buccolingual lengths are 48 mm and 44 mm, respectively, and their ratio is 1.09. This upper premolar is small compared with that of *Prodeinotherium* and *Deinotherium* reported so far. The length/width ratio is almost at the midpoint between those of *Prodeinotherium* (1.04) and *Deinotherium* (1.15) (Harris, 1978).

The lower second molar is preserved in the hypolophid and posterior cingulum, showing the prominent hypoconid and the broken apex of the entoconid. From the hypolophid, weak mesiobuccal and mesiolingual ridges extend mesially. The posterior cingulum is almost straight, measuring 10.2 mm in thickness and 33 mm in buccolingual width. On the distal surface of the hypolophid, a flat wear facet is observed. This facet does not reach the dentine. The enamel thickness at the broken edge of the median valley is 2 mm. The crown height at the tip of the hypoconid is 33 mm and the width of the hypolophid is 50.7 mm. The width of this molar is rather small compared with the smallest width (63 mm) of *Deinotherium* and falls within the range of *Prodeinotherium* dimension (48-59 mm) (Harris, 1973). Since the morphology of these teeth is not contradictory to that of *Prodeinotherium*, we allocate them to this taxon according to Harris (1973).

**Family** Gomphotheriidae Hay, 1922  
**Genus** ?*Anancus* Aymard, 1885

Materials: SN-262, 501

Localities and horizon: site-13, 15, upper member of the Sinda Beds

**Description.** A molar fragment (SN-262) (Plate 2, Fig. 5a,b) and a fragmentary

bunodontic cusp (SN-501) (Plate 2, Fig. 6) belong to this taxon. The molar fragment preserves the marginal cones at a corner showing incompletely a trifoliated wear figure. A preserved groove between the cones is invested in cementum, at which the cingulum is well developed basally. The enamel on the worn surface is 5.8 mm thick. SN-501 is not worn and the enamel is 8 mm thick at the apex. On the enamel surface of these tooth fragments, fine horizontal striates are observed.

Gomphotheriidae comprise many genera. The present materials are insufficient to obtain diagnostic features for identification at generic level. However, *Anancus* seems to be closest to these specimens because of the round and bunodontic shape of the cusps and the presence of cement in the groove between cones.

**Family** Stegodontidae Osborn, 1918  
**Genus** *Stegodon* Falconer, 1857  
*Stegodon kaisensis* Hopwood, 1939

Material: SN-256

Locality and horizon: site-14, upper member of the Sinda Beds

**Description.** This specimen is a small piece of a molar (Plate 2, Fig. 7). It is characterized by a brachyodontic lophodont and a wrinkle pattern on the enamel surface. The thickness of the enamel is 4.5 mm. These characteristics indicate that this specimen belongs to *S. kaisensis*. This species was originally reported from Kaiso, Uganda, on the opposite side of the Western Rift (Hopwood, 1939).

**Family** Elephantidae Gray, 1821  
**Genus** *Mammuthus* Burnett, 1830  
*Mammuthus subplanifrons* Osborn, 1928

Materials: SN-247, 282

Locality and horizon: site-14, upper member of the Sinda Beds

**Description.** SN-247 is a fragment of a half ridge with a posterior isolated column (Plate 2, Fig. 8a,b). A cone-pair tightly converges at the summit. The crown height is 47 mm and the basal width of the ridge is 25.7 mm. The broken medial surface indicates the absence of a median cleft. On the distal surface of the lateral cone, three vertical ridges are observed. The enamel is rather thick. SN-282 is a cone fragment whose shape resembles that of SN-247. These specimens show advanced characters compared with the cheek teeth of gomphotheres. The cone shape of these specimens is similar to that of *Stegotrabelodon* and *Mammuthus subplanifrons*. However, the absence of the median cleft indicates a closer affinity to the latter taxon.

### Unidentified Proboscidea

Materials: SN-118, 121, 226, 232, 248, 255, 257, 274, 275, 286, 310, 330A, B, C

Localities and Horizons: site-7, middle member, site-12, upper part of lower member, site-14, 15, upper member of the Sinda Beds

**Description.** SN-330A,B,C consist of three pieces of enamel fragments and an apical tip probably originating from a tusk (Plate 4, Fig. 13). The enamel is thick, and in the vicinity of the tip several grooves on the enamel emboss ridges which extend axially. The enamel has been worn at the tip. This specimen seems likely a deciduous incisor.

The other specimens are small fragments of enamel or teeth. Although they seem to be composed of several taxa, further identification is impossible because of the lack of diagnostic characters.

**Order** Perissodactyla  
**Family** Rhinocerotidae Owen, 1845  
**Genus** *Brachypotherium* Roger, 1904  
*Brachypotherium* sp.

Material: SN-313

Locality and horizon: site-3, middle member of the Sinda Beds

**Description.** A left talus, which preserves the medial half of the trochlea, posterior calcaneal, scaphoidal, and a part of the cuboidal facets, has been identified as this taxon (Plate 3, Fig. 12a, b). The anteroposterior diameter at the medial margin of the trochlea is 59 mm, and the maximum height of the medial half is 62 mm. The scaphoidal facet is concaved and measures 50 mm in width and 40 mm in height. Extrapolations of these measurements agree with those of *Brachypotherium* (Hooijer, 1963).

### Unidentified Rhinocerotidae

Materials: SN-284, 300, 557

Localities and horizons: site-1, middle member, site-12, upper part of lower member, and site-14, upper member of the Sinda Beds

**Description.** Among these specimens, only SN-300 retains diagnostic features (Plate 3, Fig. 9a,b). It is a paracone portion of a left upper cheek tooth. The occlusal surface is worn and the crown height is 47 mm. The paracone style is well-developed. It becomes weakened and disappears basally. The ectoloph apparently extends straight. Enamel thickness on the occlusal surface is 2.6 mm. On the enamel surface, weak horizontal striates are observed. It is difficult to identify this specimen with certainty. However, its hypsodontic character and the markedly constricted paracone may indicate close affinity to *Aceratherium* (Hooijer, 1963, 1978).

The other enamel and tooth fragments show rhinoceros characters. The enamel

thickness is 1.8 mm in SN-284 (Plate 3, Fig. 10) and 2.5 mm in SN-557. The badly broken state of these specimens defies further identification.

**Order** Artiodactyla  
**Family** Hippopotamidae Gray, 1821  
**Genus** *Hippopotamus* Linnaeus, 1758  
*Hippopotamus* cf. *imagunculus* Hopwood, 1939

Material: SN-087

Locality and horizon: site-1, middle member of the Sinda Beds

**Description.** A lower canine fragment is tentatively identified as *Hippopotamus imagunculus* (Plate 4, Fig. 14a,b). There are many axial striates on the enamel surface. Enamel thickness is less than 1 mm. The sectional outline shows a semicircular shape whose mesiodistal diameter is 17.5 mm. This diameter is quite small, compared with that of other hippopotamids from East Africa stored at the National Museum of Kenya. This specimen seems likely to be a part of the slender tip of the right lower canine and seems to come from a small hippopotamid species such as *H. imagunculus*. This species has been reported from the Ugandan part of the Western Rift Valley (Cooke & Coryndon, 1970; Pickford, 1990).

**Family** Giraffidae Gray, 1821  
**Genus** ?*Sivatherium* Falconer et Cautley, 1832

Material: SN-302

Locality and horizon: site-12, upper part of lower member of the Sinda Beds

**Description.** An unworn buccal enamel fragment of an upper cheek tooth is tentatively identified as this taxon (Plate 4, Fig. 16). The buccal style is well developed, and the crown height is 41 mm.

**Family** Bovidae Gray, 1821  
Gen. et sp. indet.

Material: SN-522

Locality and horizon: site-8, upper part of lower member of the Sinda Beds

**Description.** A right upper first or second molar is identified as this taxon (Plate 4, Fig. 15a,b,c). This molar is brachyodontic and the lingual surface of the crown is strongly slanted. Both mesiodistal and buccolingual lengths are 18 mm. The distal half is rather compressed buccolingually (15 mm) compared with the mesial one (18 mm). The occlusal surface has been worn, exposing the dentine core. The parastyle and mesostyle are well developed, while the metastyle is moderately developed. Between the protocone



and metaconule, a small intact tubercle is seen. The outline of the central cavities is simple. Although this tooth is one of the well-preserved materials in our collection, it is difficult to identify further.

Unidentified Mammalia

Material: SN-276

Locality and horizon: site-14, upper member of the Sinda Beds

**Description.** A hip bone fragment preserving the acetabulum and the basal part of the ilium is undetermined (Plate 3, Fig. 11). The diameter of the acetabulum is ca. 37 mm. There is a large foramen at the bottom of the acetabulum. The lunar surface is not developed.

DISCUSSION

Most of the fossil remains from the Sinda basin are fishes and aquatic reptiles. Fossil mammals are quite rare and fragmentary. Badly broken fossils are also seen in Hooijer's report of the Sinda-Mohari areas (1963). The fossils from the Sinda basin and adjacent area seem to be preserved worse than those from the Ugandan side of the Western Rift Valley (Senut & Pickford, 1988). It has been said that the activation of rift valley results in the asymmetric uplift of the shoulders on both sides in general (Pickford, 1986). In fact, the Monts Bleus on the Zairean side is more than 600 m higher than the Itwara Hills on the Ugandan side around Lake Mobutu. The broken fossils from the Sinda basin may indicate that they were brought through steeper streams into large rivers or lake(s).

Among the fossil mammals from the Sinda basin, four proboscideans have been

	MIOCENE			PLIOCENE	PLEISTOCENE
	early	middle	late		
<i>?Agriotherium</i>			.....		
<i>Prodeinotherium</i>				_____	
<i>Anancus</i>				_____	
<i>Mammuthus subplanifrons</i>					
<i>Stegodon kaisensis</i>			.....	_____	
<i>?Aceratherium</i>	_____				
<i>Brachypotherium</i>				_____	
<i>Hippopotamus</i>					_____
<i>?Sivatherium</i>					_____
Bovidae	.....				

Fig. 18. Chronological distribution of the Sinda fossil mammals.

identified with certainty. They are Mio-Pliocene animals consisted of small-sized *Prodeinotherium*, *Anancus*, *Stegodon kaisensis*, and *Mammuthus subplanifrons* (Fig. 18). In the small collection of mammals, the existence of the four proboscideans suggests the diversity of this animal in this area (Pickford et al., 1988). The deinotherian teeth from the Sinda basin are characterized by their small size and fall within the range of *Prodeinotherium*, comparable to the small-sized *Prodeinotherium* from East African lower Miocene deposits (MacInnes, 1942). Hooijer (1963) reported a second upper molar fragment of *Prodeinotherium* (he identified it as *Deinotherium* (= *Prodeinotherium*) *hobleyi*) from the almost identical locality in the Sinda basin and also noted its small size. African *Prodeinotherium* have been reported from many localities, and they show a tendency to increase in size through time (Harris, 1987). It is unlikely, however, that the existence of the small-sized *Prodeinotherium* means that the Sinda deposits are contemporary to those of East Africa, because other associated proboscideans show advanced characters and are not of early to middle Miocene animals. Rather, the existence of the small-sized *Prodeinotherium* may suggest that this animal was living in a different paleoenvironment from that in East Africa.

The fossils other than Proboscidea have been tentatively identified as a small-sized *Hippopotamus* (probably *H. imagunculus*), two Miocene Rhinocerotidae, *Brachypotherium* and *Aceratherium*, a Giraffidae (?*Sivatherium*), and a Bovidae. These mammals belong to the late Miocene-Pliocene fauna as well (Fig. 18). Hooijer (1963) gave lower Miocene age to the Sinda-Mohari fauna. However, a biostratigraphic comparison with well-studied East African faunas could reject this possibility. Hipparion is one of the key fossils of late Miocene to Pliocene age in Africa. We have not yet obtained a fossil of this animal so far, while Senut and Pickford (1988) have found the fossils on the Ugandan side of the Western Rift. It is not clear whether lack of hipparion fossils in our collection indicates the absence of this animal in the Zairean part of the Western Rift or is simply a chance result.

A deposit contemporary to the Sinda basin has been reported from the Nkondo area on the Ugandan side of the Western Rift (Pickford et al., 1988). Regarding the composition of the fauna and paleobotanical evidence, Pickford (1990) speculates that the late Mio-Pliocene environment in the Western Rift was rather humid (tropical rain forest to tropical seasonal forest-savanna mosaic) compared with that of East African contemporary. The mammalian fauna from the Sinda basin consist of the animals that lived in the environments ranging from the tropical rain forest to tropical seasonal forest-savanna mosaic (Pickford, 1990), except for Giraffidae. This presents the further evidence that the environment of the Western Rift in late Miocene to Pliocene was humid.

The Sinda basin and the adjacent areas in Zaire present us an opportunity to investigate rare fossil sites which contain animals that lived in a humid environment. Furthermore, their geological age is late Miocene to Pliocene, which is the most important age for studying the evolution of hominoids and hominids.

**ACKNOWLEDGMENTS** We are grateful to Dr. Z. Ndontoni, the General Director of Centre de Recherche en Sciences Naturelles, Fathers S. St-Arneault and T. Corvet of Gety Catholic Church, and many villagers at Mutimba for much help during the field

research, and to Drs. T. Makinouchi, M. Pickford, H. Nakaya, H. Saegusa, and M. Watabe for their invaluable advice. This research was supported by the International Scientific Research Program (#63041082) from the Japanese Ministry of Education, Science and Culture.

## REFERENCES

- Boaz, N. T. 1990. The Semliki research expedition: history of investigation, results, & background to interpretation. In (N. T. Boaz, ed.) *Evolution of environments and Hominidae in the African Rift Valley*, pp.3–14, Virginia Museum Natural History Memoir No. 1, Martinsville.
- Cooke, H. B. S. & S. C. Coryndon 1970. Pleistocene mammals from the Kaiso Formation and other related deposits in Uganda. In (L. S. B. Leakey & R. J. G. Savage, eds.) *Fossil vertebrates of Africa*, 2, pp.107–224, Academic Press, London.
- de Heinzelin, J. & J. Verniers 1987. Premiers résultats du Semliki Research Project (Parc National de Virunga, Zaïre). 1. Haute Semliki: revision stratigraphique en cours. *Rapports Annuels pour l'Années (1985–1986) de la Section de Géologie, de Minéralogie et de Paléontologie de Musée Royal de l'Afrique Centrale*, pp.141–144.
- Fushs, V. E. 1934. The geological work of the Cambridge expedition to the East African lakes, 1930–1931. *Geological Magazine*, 71: 97–112; 72: 145–166.
- Harris, J. M. 1973. *Prodeinotherium* from Gebel Zelten, Libya. *Bulletin of the British Museum (Natural History), Geology*, 23: 282–348.
- 1978. Deinotherioidea and Barytherioidea. In (V. J. Maglio & H. B. S. Cooke, eds.) *Evolution of African Mammals*, pp.315–332, Harvard University Press, Cambridge, London.
- Hooijer, D. A. 1963. Miocene mammalia of Congo. *Musée Royal de l'Afrique Centrale, Annales Serie In-8, (Sciences Géologiques)*, No. 46, pp.1–77.
- 1978. Rhinocerotidae. In (V. J. Maglio & H. B. S. Cooke, eds.) *Evolution of African Mammals*, pp.371–378, Harvard University Press, Cambridge, London.
- Hopwood, A. T. 1926. Fossil Mammalia. In (E. J. Wayland, ed.) *The geology and paleontology of the Kaiso Bone Beds*, pp.13–36, Occasional Paper on Geological Survey in Uganda 2.
- 1939 The mammalian fossils. In (T. P. O'Brien, ed.) *The prehistory of Uganda protectorate*, pp.308–316, Cambridge University Press, Cambridge.
- Hopwood, A. T. & J. Lepersonne 1953. Présence de formations d'âge miocène inférieur dans le fossé tectonique du Lac Albert et de la Basse Semliki (Congo belge). *Annales de la Société Géologique de Belgique*, 77: B83–113.
- Lepersonne, J. 1949. Le fossé tectonique Lac Albert—Semliki—Lac Edouard. Résumé des observations géologiques effectuées en 1938–1939–1940. *Annales de la Société Géologique de Belgique*, 77: M1–92.
- MacInnes, D. G. 1942. Miocene and post-Miocene Proboscidea from East Africa. *Transactions of the Zoological Society of London*, 25: 33–106.
- Makinouchi, T., S. Ishida, Y. Sawada, N. Kuga, S. Kimura, Y. Orihashi, B. Bajope, M.

- Yemba, & H. Ishida 1992. Geology of the Sinda-Mohari region, Haut-Zaïre Province, eastern Zaïre. *African Study Monographs*, Supplementary Issue, 17: 3–18.
- Pickford, M. 1986. Sedimentation and fossil preservation in the Nyanza Rift System, Kenya. In (L. Frostick et al., eds.) *Sedimentation in the African Rifts*, pp.345–362, Geological Society of London Special Publication 25.
- 1990. Uplift of the roof of Africa and its bearing on the evolution of mankind. *Human Evolution*, 5: 1–20.
- , B. Senut, I. Ssemmanda, D. Elepu, & P. Obwona 1988. Premiers résultats de la mission de l'Uganda Palaeontology Expedition à Nkondo (pliocène du bassin du lac Albert, Ouganda). *C. R. Académie des Sciences (Serie II) Paris*, 306: 315–320.
- , ———, H. Roche, P. Mein, G. Ndaati, P. Obwona, & J. Tuhumwire 1989. Uganda Palaeontology Expedition: résultats de la deuxième mission (1987) dans la région de Kiseni-Nyabusosi (bassin du lac Albert, Ouganda). *C. R. Académie des Sciences (Serie II) Paris*, 308: 1751–1758.
- , ———, J.-J. Tiercelin, R. Kasande, & P. Obwona 1990. Résultats de la troisième mission (1988) de l'Uganda Palaeontology Expedition: région de Nkondo-Sebugoro et de Hohwa (bassin du lac Albert, Ouganda). *C. R. Académie des Sciences (Serie. II) Paris*, 311: 737–744.
- Senut, B. & M. Pickford 1988. *Uganda Palaeontology Expedition Rift occidental, 1988*, pp.1–30.

——— Received *December 20, 1991*

Authors' Names and Addresses: Kinya YASUI, *Section of Anatomy, Institute of Stomatognathic Science, Department of Dentistry, Tokyo Medical & Dental University, 1–5–45, Yushima, Bunkyo-ku, Tokyo 113, Japan\**; Yutaka KUNIMATSU, *Laboratory of Physical Anthropology, Kyoto University, Kitashirakawa-oiwake-cho, Sakyo-ku, Kyoto 606, Japan*; Naoyuki KUGA, *Laboratory of Paleontology, Kyoto University, Kitashirakawa-oiwake-cho, Sakyo-ku, Kyoto 606, Japan*; Baluku BAJOPE, *Département de Biologie, Centre de Recherche en Sciences Naturelles, Lwiro, Bukavu, Kivu, Zaïre*; Hidemi ISHIDA, *Laboratory of Physical Anthropology, Kyoto University, Kitashirakawa-oiwake-cho, Sakyo-ku, Kyoto 606, Japan*.

\*Correspondence and reprint address



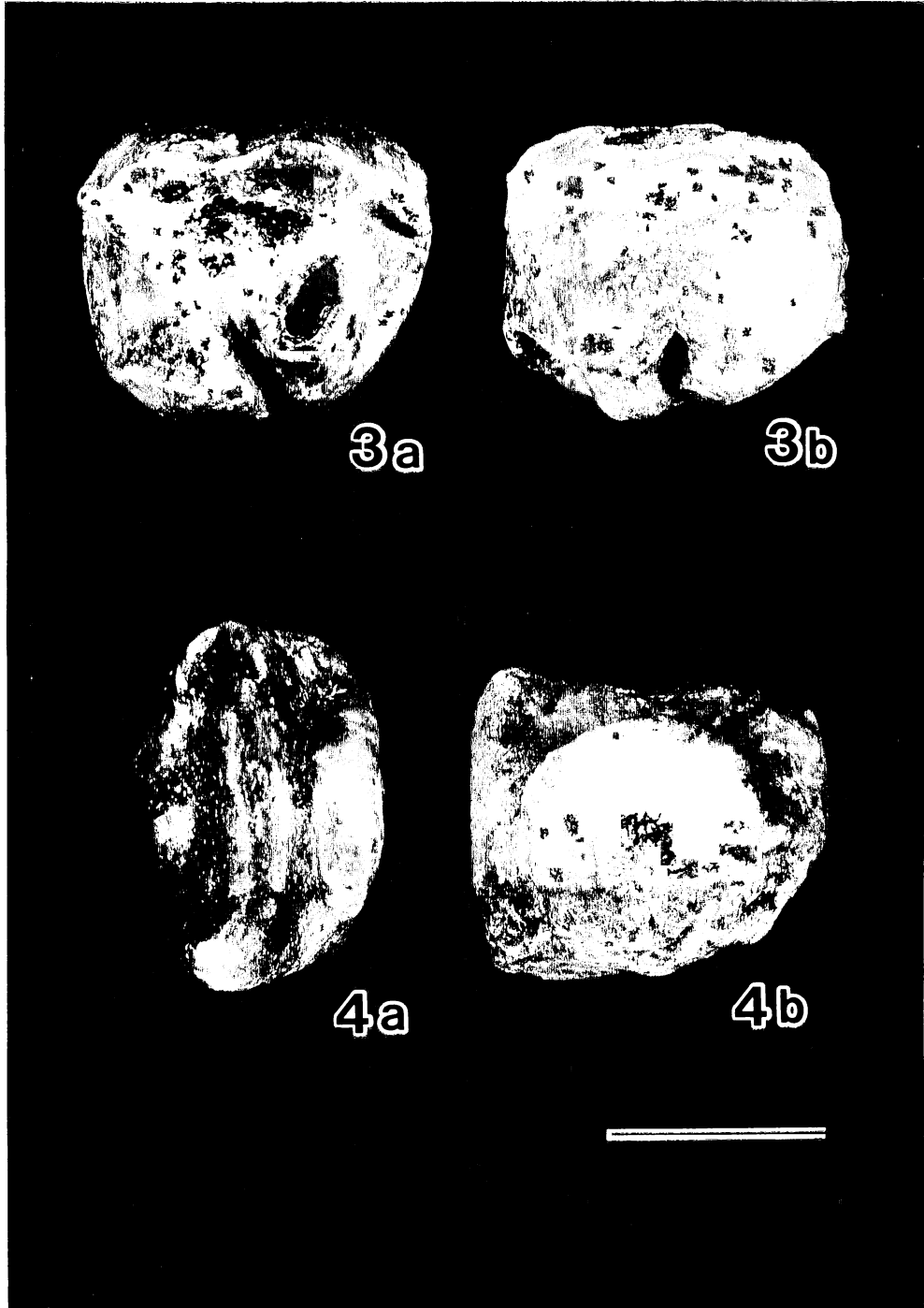
## Explanation of Plate 1.

*Prodeinotherium* sp. (scale bar 3 cm)

**Fig. 3a,b.** Occlusal (a) and buccal (b) views of the right upper third premolar (SN-500).

**Fig. 4a,b.** Occlusal (a) and distal (b) views of the distal half of the right lower second molar (SN-273).

Plate 1



## Explanation of Plate 2.

*Anancus* sp. (scale bar 3 cm)

**Fig. 5a,b.** Occlusal (a) and lateral (b) views of a molar fragment (SN-262).

**Fig. 6.** Lateral view of a cone fragment (SN-501).

*Stegodon kaisensis* (scale bar 3 cm)

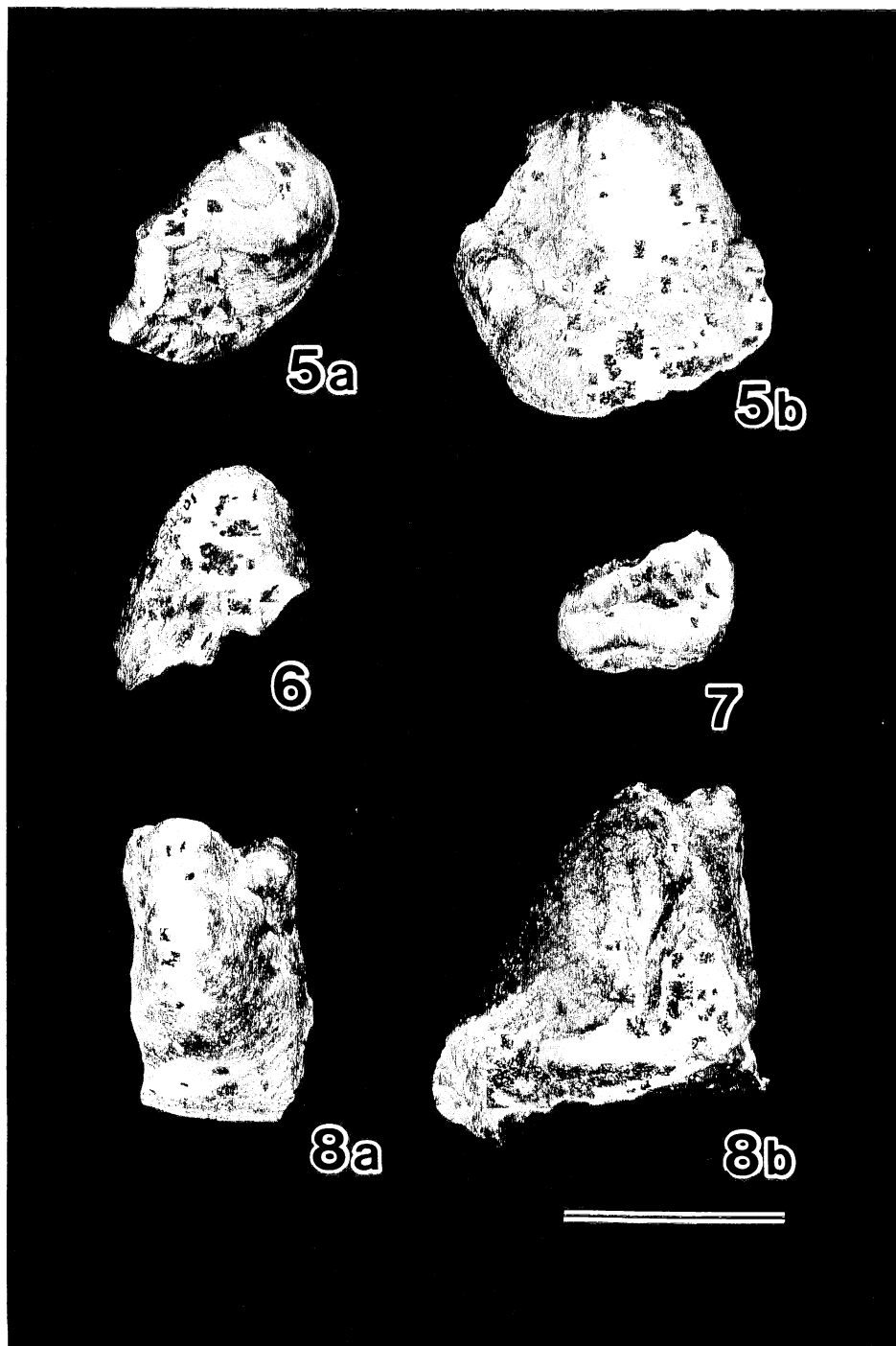
**Fig. 7.** Occlusal view of a molar fragment (N-256).

*Mammuthus subplanifrons* (scale bar 3 cm)

**Fig. 8a,b.** Occlusal (a) and distal (b) views of a half ridge of a molar (SN-247).



Plate 2



## Explanation of Plate 3.

*?Aceratherium* sp. (scale bar 3 cm)

**Fig. 9a,b.** Buccal (a) and occlusal (b) views of a paracone part of an upper cheek tooth (SN-300).

Unidentified Rhinocerotidae (scale bar 3 cm)

**Fig. 10.** Lateral view of a cheek tooth fragment (SN-284).

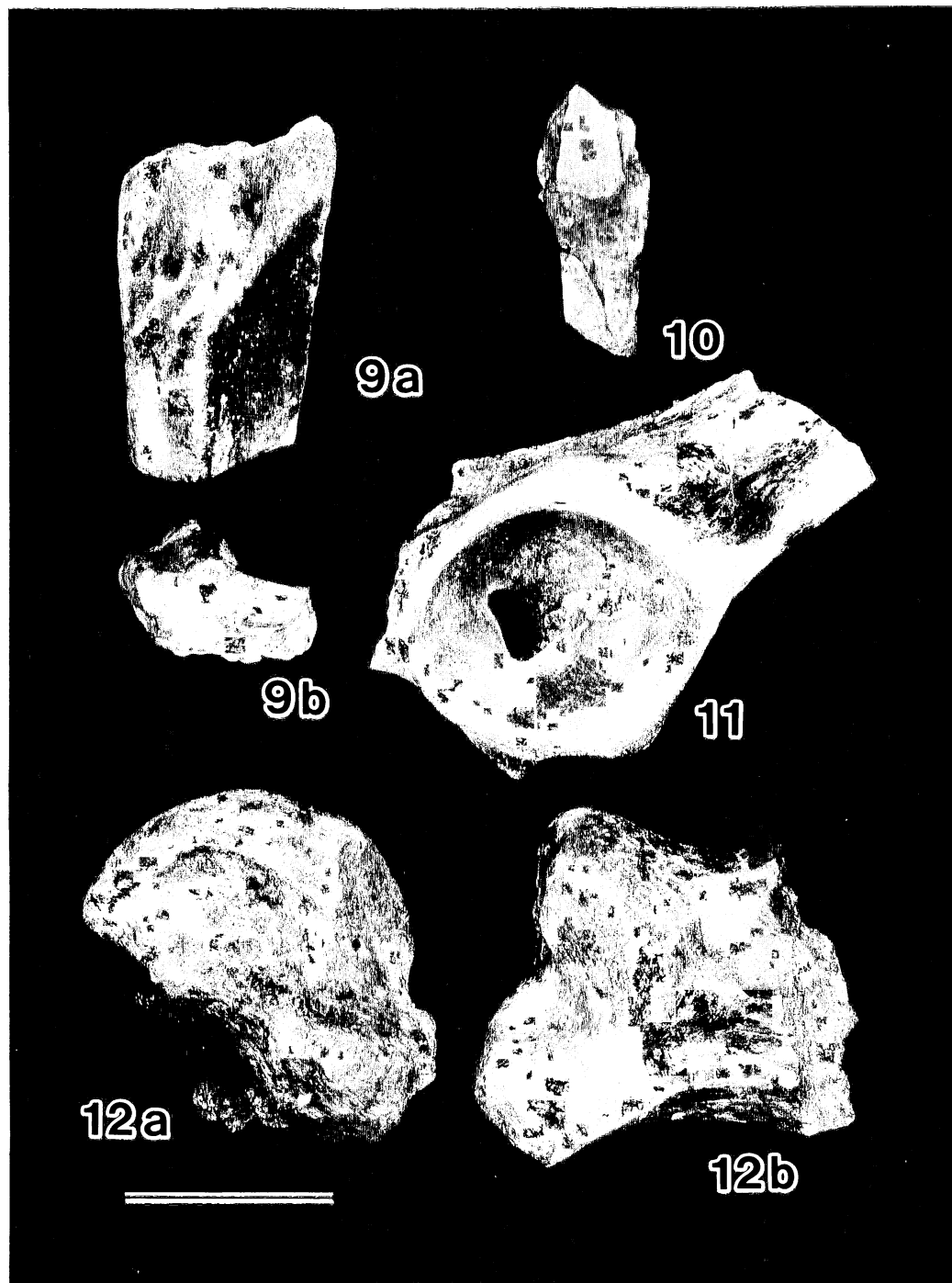
Unidentified Mammalia (scale bar 3 cm)

**Fig. 11.** A coxal fragment preserving the acetabulum and a part of the ilium (SN-276).

*Brachypotherium* sp. (scale bar 2.4 cm)

**Fig. 12a,b.** Medial (a) and anterior (b) views of the left talus (SN-313).

Plate 3



## Explanation of Plate 4.

*?Hippopotamus* sp. (scale bar 3 cm)

**Fig. 13.** Lateral view of probable lower incisor fragments (SN-330A, B, C)

*Hippopotamus* cf. *imagunculus* (scale bar 3 cm)

**Fig. 14a,b.** Sectional outline (a) and inferior view (b) of a lower canine fragment (SN-087).

Bovidae gen. et sp. indet. (scale bar 1.5 cm)

**Fig. 15a-c.** Buccal (a), occlusal (b), and mesial (c) views of the right upper first or second molar (SN-522).

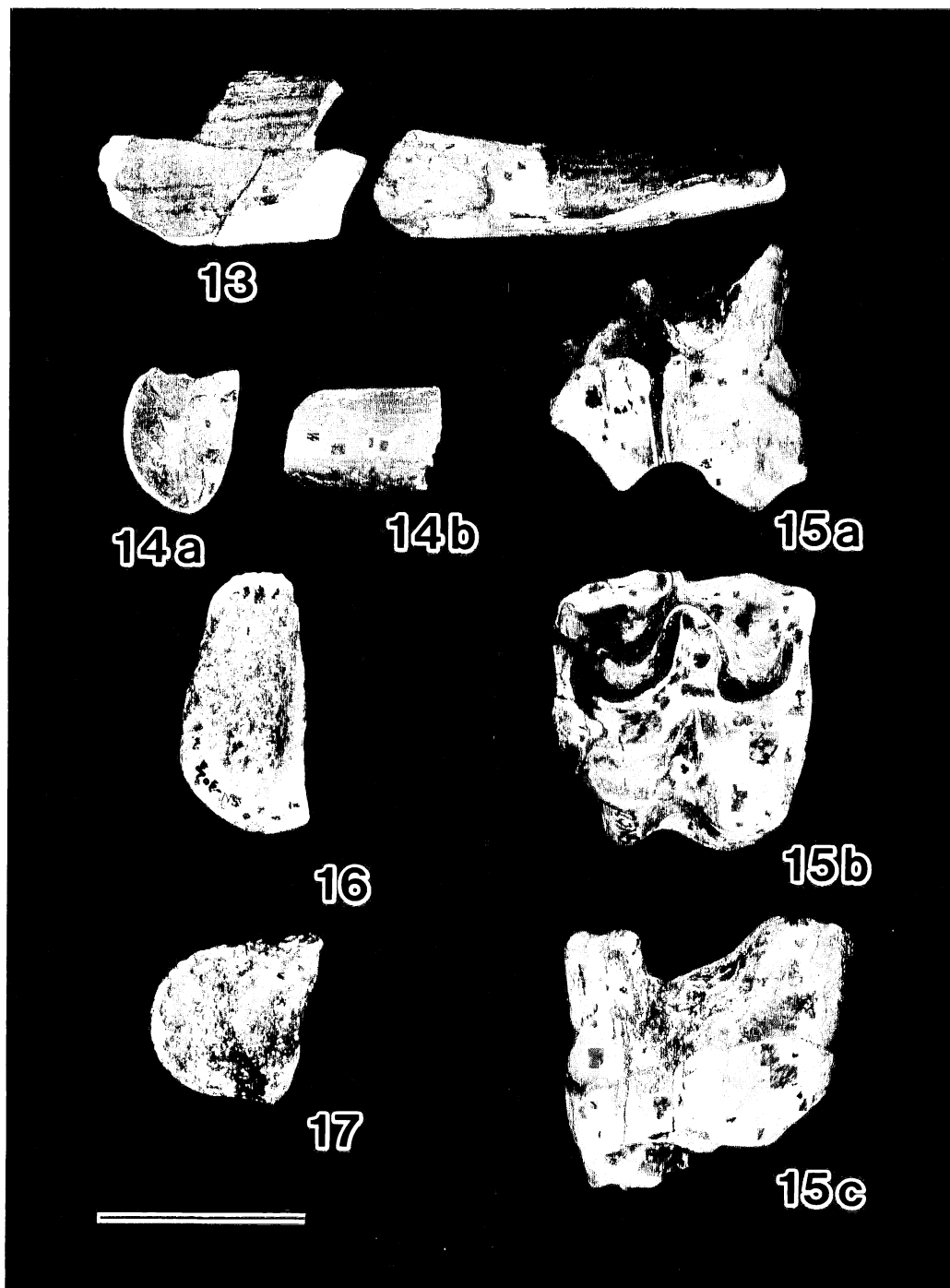
*?Sivatherium* sp. (scale bar 3 cm)

**Fig. 16.** Buccal view of an enamel fragment of an upper cheek tooth (SN-302).

*?Agriotherium* sp. (scale bar 1.5 cm)

**Fig. 17.** Occlusal view of a molar fragment (SN-228).

Plate 4



## AFRICAN STUDY MONOGRAPHS INFORMATION FOR CONTRIBUTORS

*African Study Monographs* is a multi-disciplinary journal which publishes academic articles in all fields of African studies. The journal will emphasize monographs, but brief communications are also published. Although this journal is primarily for original papers, review articles and book reviews are also published.

To minimize publication delays, authors should follow the instructions given below.

**Send** manuscripts (one original and another high-quality [photocopy preferable to carbon copy] to:

Editorial Board of *African Study Monographs*  
Center for African Area Studies, Kyoto University  
46 Shimoadachi-cho, Yoshida, Sakyo-ku, Kyoto 606, Japan.

**Any** manuscript or any part of a manuscript that has been published or submitted for publication elsewhere cannot be accepted for publication. Decision on acceptance of papers will be made as rapidly as possible. Papers that are not suitable to the journal (including those which do not follow the instructions given here) will be rejected (authors will be informed) without detailed review. Manuscripts received will not be returned.

**Type** all material double-spaced, on only one side of paper of A4 (21 × 30 cm) size. Do not use very thin paper. Leave 2.5 cm margins on all sides of each page. Do not hyphenate words at the right margin. Special typefaces (e.g., italic or sans serif) should not be used, and right-hand margins should not be justified. Wordprocessing output on dot matrix printers is acceptable only if it has the quality of the standard typewriter. Handwritten items (e.g., Greek letters) must be identified in the margin.

**An abstract**, no longer than 200 words, is to be provided.

**Key words** (about five words) should be listed immediately below the abstract.

**Avoid footnotes.** All notes, limited to the minimum necessary, are arranged in the form of end-of-text NOTES. They should be numbered and typed consecutively after the text.

**Tables** must each be typed double-spaced on separate sheets. Number tables consecutively with Arabic numerals (Table 1, Table 2, etc.), and provide a short title at the top of each table.

**All illustrations**—including all photographs, drawings, diagrams, and charts—should be numbered in one consecutive series of Arabic numerals (Fig. 1, Fig. 2, etc.). Each illustration should have a self-contained descriptive legend. These legends should be typed in sequence on a separate sheet of paper. Photographs should be supplied as glossy originals no smaller than the size they are to appear in the journal. Drawings should be prepared with India ink on tracing paper, Bristol board, or good quality white paper. For lettering, use a stencil set or preprinted letters such as Letraset. Never draw letters freehand. Use the International System of Units (SI) for measurements.

**Citations** of the literature in the text should be given by the author's surname with the year of publication:

... (Nishida & Kawanaka, 1972; Itani, 1980)  
Fossey (1979) pictured them ...

For more than two authors, use the first author's name plus "et al.":

Furuichi et al. (1982) set forth ...

When referring to pages (required for direct quotations), put them after a colon following the year:

Leech (1957: 119–120) stated that ...  
... (Pruit, 1960: 19).

**The references** at the end of the paper should list all works referred to in the text and only those, in alphabetical order by the author's surname. Do not abbreviate journal names. They should be represented in the manuscript (note: without indentation although indented in the final print) in the following forms:

Hoff, M.P., R.D. Nadler, & T.L. Maple 1981. The development of infant play in a captive group of lowland gorilla (*Gorilla gorilla gorilla*). *American Journal of Primatology*, 1: 65–72.

Lee, R.B. 1965. What hunters do for a living, or how to make out on scarce resources. In (R.B. Lee & I. DeVore, eds.) *Man the Hunter*, pp. 30–48, Aldine, Chicago.

Turnbull, C. 1965. *Wayward Servants: The Two Worlds of the African Pygmies*. Natural History Press, New York.

Uehara, S. 1981. The social unit of wild chimpanzees: A reconsideration based on the diachronic data accumulated at Kasoje in the Mahale Mountains, Tanzania (in Japanese). *Africa Kenkyu*, 20: 15–32.

Idrees, A.A. 1986. *Ganigan War 1881–2: The Kyadya Reaction to the Political and Economic Domination of Bida in the Middle Niger*. Paper presented at the 31st Annual Congress of the Historical Society of Nigeria, May 18–24, 1986, Ife, Nigeria.

Along with printed manuscripts, authors who prepare manuscripts with wordprocessors or personal computers are encouraged to submit the final edited version in the form of floppy disks. Also inform us of the type of wordprocessors, or the name and its version of the software (e.g. WordStar ver. 4) in the case of personal computers.

**Offprints** (30 copies) are provided free of charge. Additional copies may be purchased at a charge which is in proportion to the number of printed pages.